

OPS242 User Manual

OmniPreSense OPS242 short range radar sensor has an easy to use API to control the output of the sensor. Simple commands can be used to configure the operation and output information provided by the sensor. Default settings are noted below. Upon powering on the module, the default settings are used.

Installation Instructions

The OPS242 provides a complete radar module on a single board. The coverage area or field of view (FOV) for the OPS242 is 76° in the azimuth (horizontal) and elevation (vertical). Install the OPS242 facing the direction of the FOV to be covered.

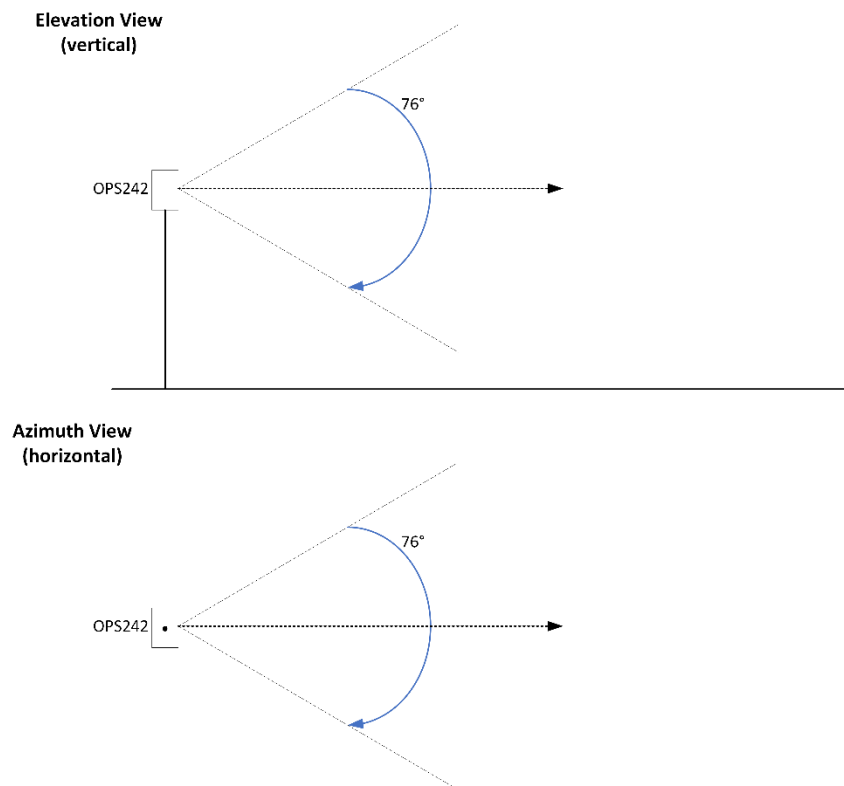


Figure 1. OPS242 Beamwidth

The OPS242 can generally be placed behind most any material (plastic, glass, wood, etc.) depending on thickness. Typical applications will use plastics such as ABS or PVC at 3 or 6mm thickness. Some materials will block the signal and the OPS242 should not be placed behind these. Examples of these are metal, concrete or brick.

Terminal Control

A simple Command Terminal can be used to control the sensor operation with the API commands. Examples of simple but very useful Command Terminals are [Tera Terminal](#) and [PuTTY](#). Both are free, open source terminal tools for the PC/Mac which can easily connect to a serial port and accept data over USB from the OminPreSense sensor.

To begin using the OmniPreSense module, first download Tera Terminal or PuTTY onto your PC/Mac. With the OmniPreSense sensor plugged into the USB port of your PC/Mac, start Tera Terminal or PuTTY. A configuration window such as in Figure 2 or Figure 3 will appear. TeraTerm can detect the active COM port (greyed out to right of Serial button if TCP/IP is selected). Select the Serial button and press OK. For PuTTY, you'll need to know which COM port is used, set its value, select the Serial button, and Open.

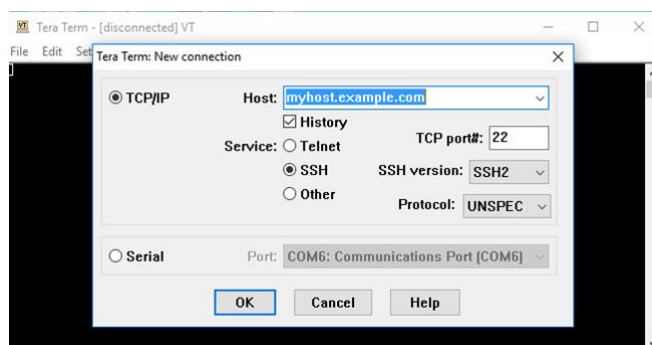


Figure 2. Tera Term Startup Menu

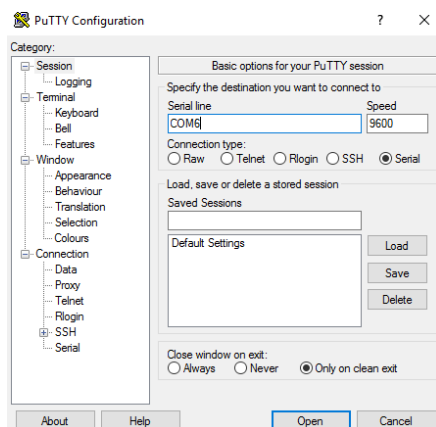


Figure 3. PuTTY Startup Menu

Once connected, the data reported by the sensor will start streaming to the terminal when an object in motion appears. The default settings are shown in Table 1. If there is no object moving in front of the module, no data is reported or streamed to the terminal. A simple wave of the hand will show data like that shown in Figure 4. Any of the API commands can now be executed to change the output data or query the configuration.



Figure 4. Streaming Data with Tera Term



Figure 5. Streaming Data with PuTTY

Default Settings

The default settings of the sensor are set to provide solid performance over a wide range of applications. Upon power-up the default settings are used, and operation begins. Future updates will allow the module to retain the settings of the sensor from the last operation. The default settings are listed in Table 1.

Table 1. Default Settings

| API Command | API Command | Default Value |
|---------------------------|-------------|---------------|
| Output Units | UM | m/s |
| Data Accuracy | F2 | 2 |
| Sample Rate | SX | 10,000 |
| Sample Buffer Size | S> | 1024 |
| Reported Speed Filter | R= <i>n</i> | Off |
| Reported Direction Filter | R | Off |
| Quash Noise | QQ | On |
| JSON Output | Oj | Off |
| LED Control | OL | On |
| Magnitude Report | Om | Off |
| Number Reports | On | 1 |
| Raw Data Output | Or | Off |
| Speed Report | OS | On |
| Time Report | Ot | Off |
| Module Power | PA | Active |

Operating Range

The maximum speed reported is determined by the Sampling Frequency. For slow moving objects, a sample rate of 5,000 (SV command) is perfectly fine. The default setting of 10,000 (SX command) provides a detectable speed of up to 31.1 m/s (69.5 mph) while 20,000 (S2 command) provides up to 62.2 m/s (139.1 mph). The accuracy of the reported speed increases as the sample frequency goes down. The range of values is summarized in Table 2.

Table 2. Maximum Operating Speeds

| Sample Frequency | API Command | Maximum Speed (m/s) | Maximum Speed (mph) | Accuracy* (m/s) | Accuracy* (mph) |
|------------------|-------------|---------------------|---------------------|-----------------|-----------------|
| 1,000 | SI | 3.1 | 7.0 | 0.006 | 0.014 |
| 5,000 | SV | 15.5 | 34.8 | 0.030 | 0.068 |
| 10,000 | SX | 31.1 | 69.5 | 0.061 | 0.136 |
| 20,000 | S2 | 62.2 | 139.1 | 0.121 | 0.272 |
| 50,000 | SL | 155.4 | 347.7 | 0.304 | 0.679 |
| 100,000 | SC | 310.8 | 695.4 | 0.608 | 1.358 |

* 1024 buffer size, 512 buffer size accuracy will be twice these values

API Commands

The following are the API commands supported by the OPS242-A. These commands can be sent by typing into the command terminal to change settings on the module or control its operation. The commands provided include simple queries to fetch information about the sensor and its settings or write commands which control or change the operation of the sensor.

Module Information – returns information about the sensor and its report setting.

| Command | Name | R/W | Value |
|---------|--------------------|------|---|
| ?? | Module Information | Read | {"Product":"OMPS242A"} {"Version":"1.2.0"} {"SamplingRate":10000, "resolution":0.0607} {"Clock":"20054"} {"PowerMode":"Continuous"} |

Sensor Part Number – returns sensor model number consisting of OmniPreSense ACPI vendor ID and part number.

| Command | Name | R/W | Value |
|---------|--------------------|------|------------------------|
| ?P | Sensor Part Number | Read | {"Product":"OMPS242A"} |

Firmware Version – returns current firmware version of the sensor. Firmware version consists of a major revision, minor revision, and patch revision in the form of xx.yy.zz.

| Command | Name | R/W | Value |
|---------|-------------------------|------|---------------------------|
| ?V | Firmware Version Number | Read | {"Version":"1.2.0"} |
| ?B | Firmware Build Number | Read | {"Build":"20180705_1500"} |

Speed Output Units – read or set the units for the velocity output. Units supported include m/s (default), cm/s, ft/s, km/hr, and miles per hour.

| Command | Name | R/W | Value |
|---------|------------------------|-------|------------------------|
| U? | Current Velocity Units | Read | {"Units":"m-per-sec"} |
| UC | Centimeters per second | Write | {"Units":"cm-per-sec"} |
| UF | Feet per second | Write | {"Units":"ft-per-sec"} |
| UK | Kilometers per hour | Write | {"Units":"km-per-hr"} |
| UM | Meters per second | Write | {"Units":"m-per-sec"} |
| US | Miles per hour | Write | {"Units":"mph"} |

Data Precision – set the number of digits for the data reported.

| Command | Name | R/W | Value |
|---------|----------------|-------|---|
| Fn | Decimal Places | Write | Set <i>n</i> to the number of decimal places to be reported. For example, setting to F2 will report 2 decimal places (ex. 10.35). F0 will provide the integer value only. Valid values of <i>n</i> are 0-5. |

Sampling Rate/Buffer Size – set these values to control the sample rate of the sensor. This setting influences the output data and the rate at which the data is reported. The buffer size influences the report rate and accuracy. A buffer size of 512 will have a report rate between 5-30Hz. The accuracy becomes worse by a factor of two with a 512-buffer size versus 1024 (Figure 6).

| Command | Name | R/W | Value |
|----------|---------------------|-------|--|
| SI | 1K samples/second | Write | |
| SV | 5K samples/second | Write | |
| SX or S1 | 10K samples/second | Write | |
| S2 | 20K samples/second | Write | |
| SL | 50K samples/second | Write | |
| SC | 100K samples/second | Write | |
| S> | 1024 buffer size | Write | 1024 samples are collected before processing |
| S< | 512 buffer size | Write | 512 samples are collected before processing |

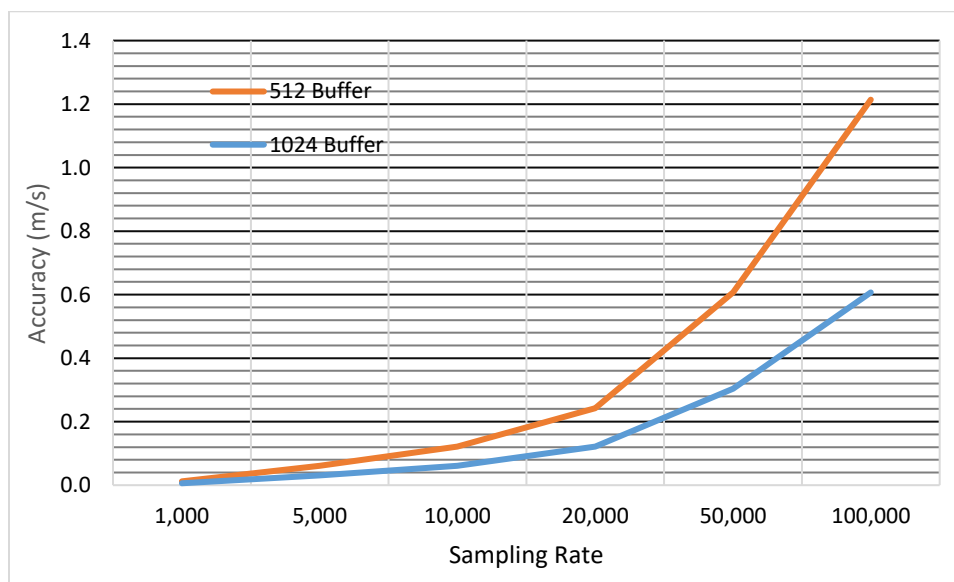


Figure 6. Buffer Size versus Accuracy

Reported Speed/Direction Filter – use these settings to set the minimum value or direction to report. Reported speed can be used to set the sensitivity level of detection. Any values below the number n will not be reported. This command requires a return (↵) after the number. Direction filter allows reporting only a single direction or both.

| Command | Name | R/W | Value |
|---------|-------------------------|-------|--|
| R> n | Reported Speed Filter | Write | n is any number upon which no detected speeds below that number will be reported |
| R+ | Inbound Only Direction | Write | Only reports inbound direction |
| R- | Outbound Only Direction | Write | Only reports outbound direction |
| R | Clear Direction Control | Write | Reports both directions |

Frequency Control – use this setting to set the desired transmit frequency. Set n to a positive or negative number between ± 4 to set the frequency. $T=0$ is the default setting for 24.125GHz. Each increment steps approximately 18MHz. The programming steps are limited to 24.089 through 24.161GHz operation. Depending on the spread between the current frequency and the newly set frequency, there may be a long settling time on the order of 5-10 seconds or longer based on the size of the jump in values. Writing ?F will provide the current transmitter output frequency.

| Command | Name | R/W | Value |
|---------|-------------------|-------|---|
| T= n | Frequency Setting | Write | $T=0$ is the default setting for 24.125GHz. $n = -2, -1, 0, 1, \text{ or } 2$ |
| ?F | Frequency Output | Read | ?F returns the output frequency of the transmitter in GHz. |

Data Output – set to control the data which is output.

| Command | Name | R/W | Value |
|---------|--------------------|-------|--|
| OF | FFT Output On | Write | Results from the FFT processing of each buffer will be sent. Each buffer is 1024 samples. Data is output with json output format. |
| Of | FFT Output Off | Write | Turns off FFT output. |
| OJ | json Mode On | Write | Turns on output to format data in json format. An example would output: {"speed":0.58, "direction":"inbound", "time":105, :tick":135} |
| Oj | json Mode Off | Write | Turns off json output mode. |
| OR | Raw ADC Output On | Write | I and Q output buffers from the ADC will be sent. Data will alternate between outputting the I buffer and then Q buffer. |
| Or | Raw ADC Output Off | Write | Turns off output of the I and Q buffers. |
| OL | LED Control | Write | Turn the LEDs on (OL) or off (Ol). Turning off the LED's can save approximately 10mA of current consumption. |
| On | Number Reports | Write | Define how many reports to provide. <i>n</i> is a number between 1 and 9. The number <i>n</i> holds for time, magnitude, and speed. |
| OM | Magnitude Report | Write | Turn on reporting of the magnitude associated with the speed. The magnitude is a measure of the size, distance, and reflectivity of the object detected. Type Om to turn magnitude off. When turned on, magnitude information comes before speed information. |
| OS | Speed Report | Write | Turn speed reporting on or off. Default operation speed is reported. Use Os to turn it off and OS to turn it back on. |
| OT | Time Report | Write | Turn the time report on. Time is reported as the seconds and milliseconds since the last reboot or power on. For example, 137.429, 3.6 is read as 137 seconds and 429 milliseconds with a speed of 3.6 m/s. If magnitude is turned on, the data is provided as time, magnitude, speed. |

Timing Report – set to control the reporting of the time. The time is measured in seconds/milliseconds from power on of the module. Use the OJ command to report the time in seconds and milliseconds along with the speed and direction information (or direction can be turned off). When the module is put in low power state, the clock will continue counting. If you wish for the module to provide “the real time”, then set it to “the Unix time” (see wikipedia.org/wiki/Unix_time).

| Command | Name | R/W | Value |
|---------|------------|-------|--|
| C? | Query Time | Read | Ex. {"Clock": "50"} reports 50 seconds since power on. |
| C=n | Set Time | Write | Reset the clock start time. For example, n = 10 will start the clock at 10 seconds and then continue counting. |

Module/Transmit Power – set to control the operating mode (PA, PI, PP) or the transmit power. The typical maximum transmit power is 9 dB. Reducing the transmit power does not reduce the overall power consumption of the module. Note that the detection range will decrease with decreased transmit power.

| Command | Name | R/W | Value |
|----------|-------------------------------------|-------|---|
| PA | Active Power Mode | Write | Normal operating mode. |
| PI | Idle Power Mode | Write | No activity, waits for Active Power command. The RF is powered down for further power savings. |
| PP | Single Shot Mode | Write | Use this mode to capture and process a single buffer of data. The module will stay in PP mode until either a PA or PI command is given. While in PP mode, the RF device is powered off to save power. |
| P7 or PN | Transmit Power Control or Min Power | Write | Transmit is set at -9 dB below max power. |
| P6 | Transmit Power Control | Write | Transmit is set at -6 dB below max power. |
| P5 | Transmit Power Control | Write | Transmit is set at -4 dB below max power. |
| P4 | Transmit Power Control | Write | Transmit is set at -2.5 dB below max power. |
| P3 or PD | Transmit Power Control or Mid Power | Write | Transmit is set at -1.4 dB below max power. PD has additional “overdrive” of 0.2 dB when utilized. |
| P2 | Transmit Power Control | Write | Transmit is set at -0.8 dB below max power. |
| P1 | Transmit Power Control | Write | Transmit is set at -0.4 dB below max power. |
| P0 or PX | Transmit Power Control or Max Power | Write | Transmit power is set at its maximum value with maximum range. PX has additional “overdrive” of 0.2 dB when utilized. |

Duty Cycle Control – set to control the duty cycle operation. The time set is the amount of time the module will sleep between transmit/receive pulses and processing. During the sleep time the orange LED will be on. For settings longer than 1 second, the RF will be powered off to save power. In this manner, lower power operation may be achieved.

| Command | Name | R/W | Value |
|----------|-------------------|-------|---|
| Z0 | Sleep 0 Second | Write | Use to set back to normal operation. |
| Z1 | Sleep 1 Second | Write | |
| ZV | Sleep 5 seconds | Write | |
| ZX or Z1 | Sleep 10 seconds | Write | |
| ZL | Sleep 50 seconds | Write | |
| ZC | Sleep 100 seconds | Write | |
| Z2 | Sleep 200 seconds | Write | |
| Z=n | Set Sleep Time | Write | Set the amount of time to sleep between data processing. Ex., n = 5 would set the module to sleep for 5 seconds (RF powered off) between a transmit/receive pulse and processing. |

Squelch Control – provides control over the sensitivity of the module to detect moving objects. Low numbers are most sensitive, high numbers are least sensitive.

| Command | Name | R/W | Value |
|---------|--------------------------|-------|--|
| QI | Squelch Control - 100 | Write | Highest sensitivity setting. |
| QV | Squelch Control - 500 | Write | |
| QX | Squelch Control – 1,000 | Write | |
| QL | Squelch Control – 5,000 | Write | |
| QC | Squelch Control – 10,000 | Write | |
| Qn | Squelch Control | Write | Set <i>n</i> to the desired squelch number x 1000. For example, setting to Q2 will set the value to 2000. Valid values of <i>n</i> are 0-9. 0 provides no squelch control and all data will be reported. |
| Q=n | Squelch Control | Write | <i>n</i> = any arbitrary number between 1 and 4 billion. |
| QQ | Quash On | Write | Quash filters out the lowest frequency components around DC. |
| Qq | Quash Off | Write | Turns quash off. |

Debug Modes – provides debug information about the module.

| Command | Name | R/W | Value |
|---------|------------|-------|---|
| DR/Dr | Red LED | Write | DR to turn on red LED, Dr to turn off. |
| DY/Dy | Yellow LED | Write | DY to turn on yellow LED, Dy to turn off. |

FCC 15B Statement

This equipment has been tested and found to comply with the limits for a Class B digital device, pursuant to part 15 of the FCC Rules. These limits are designed to provide reasonable protection against harmful interference in a residential installation. This equipment generates, uses and can radiate radio frequency energy and, if not installed and used in accordance with the instructions, may cause harmful interference to radio communications. However, there is no guarantee that interference will not occur in a particular installation. If this equipment does cause harmful interference to radio or television reception, which can be determined by turning the equipment off and on, the user is encouraged to try to correct the interference by one or more of the following measures:

- Reorient or relocate the receiving antenna.
- Increase the separation between the equipment and receiver.
- Connect the equipment into an outlet on a circuit different from that to which the receiver is connected.
- Consult the dealer or an experienced radio/TV technician for help.

FCC 15C Statement

This device complies with Part 15 of the FCC Rules. Operation is subject to the following two conditions: (1) this device may not cause interference, and (2) this device must accept any interference, including interference that may cause undesired operation of the device.

FCC RF Exposure Statement

This transmitter must be installed to provide a separation distance of at least 20cm from all persons and must not be co-located or operating in conjunction with any other antenna or transmitter. End-users must be provided with transmitter operation conditions for satisfying RF exposure compliance.

IC Statement (English and French):

This device complies with ISED Canada license-exempt RSS standard(s). Operation is subject to the following two conditions: (1) this device may not cause interference, and (2) this device must accept any interference, including interference that may cause undesired operation of the device.

Le présent appareil est conforme aux CNR d'ISED Canada applicables aux appareils radio exempts de licence. L'exploitation est autorisée aux deux conditions suivantes: (1) l'appareil ne doit pas produire de brouillage, et (2) l'utilisateur de l'appareil doit accepter tout brouillage radio électrique subi, même si le brouillage est susceptible d'en compromettre le fonctionnement.

Non-modification Statement

OmniPresense Corporation has not approved any changes or modifications to this device by the user. Any changes or modifications could void the user's authority to operate the equipment.

The final product containing the modular transmitter must be labeled with the following statement:

"Contains FCC ID: 2ALLL242A"

"Contains IC: 24107-08600250004"

Revision History

| Version | Date | Description |
|---------|-----------------|-----------------------------------|
| A | July 9, 2018 | Initial release. |
| B | August 10, 2018 | FCC language added. |
| C | August 27, 2018 | Correction to frequency channels. |