



中认信通
CHINA CERTIFICATION ICT CO., LTD (DONGGUAN)



SAR TEST REPORT

Applicant: Wuhan Tianyu Information Industry Co., Ltd.

Address: Huazhong University of Sci. & Tech., East Lake Dev. Zone, Wuhan
430223, Hubei, China

FCC ID: 2ALKI-S40

Product Name: Smart Mobile Terminal

Test Model: S40

Standard(s): 47 CFR Part 2(2.1093)

The above device has been tested and found compliant with the requirement of the relative standards by China Certification ICT Co., Ltd (Dongguan)

Report Number: CR230952608-SA

Date Of Issue: 2023-10-21

Reviewed By: Karl Gong

Karl Gong

Title: SAR Engineer
Test Laboratory: China Certification ICT Co., Ltd (Dongguan)
No. 113, Pingkang Road, Dalang Town, Dongguan,
Guangdong, China
Tel: +86-769-82016888

SAR TEST RESULTS SUMMARY

Operation Frequency Bands	Highest Reported 1g SAR(W/kg)		Highest Reported 10g SAR(W/kg)			
	Body-Supported (Gap 5mm)	Limits (W/kg)	Handheld (Gap 0mm)	Limits (W/kg)		
GSM 850	0.29	1.6	0.98	4.0		
PCS 1900	0.38		1.03			
WCDMA Band 2	0.22		2.37			
WCDMA Band 4	0.97		1.62			
WCDMA Band 5	0.18		0.66			
LTE Band 2	0.13		1.65			
LTE Band 4	0.08		0.87			
LTE Band 5	0.20		0.61			
LTE Band 7	0.32		1.73			
LTE Band 40 Lower	0.14		0.54			
LTE Band 40 Upper	0.10		0.52			
LTE Band 41&38	0.18		0.46			
WLAN 2.4G	0.05		0.12			
WLAN 5.2G	0.20		0.41			
WLAN 5.3G	0.18		0.38			
WLAN 5.6G	0.13		0.27			
WLAN 5.8G	0.14		0.31			
Maximum Simultaneous Transmission SAR						
Items	Body-Supported (Gap 5mm)		Limits (W/kg)		Handheld (Gap 0mm)	Limits (W/kg)
Sum SAR(W/kg)	1.21		1.6		2.78	4.0
SPLSR	N/A	N/A	N/A	0.04		
EUT Received Date:	2023/09/07					
Test Date:	2023/10/01-2023/10/07					
Test Result:	Pass					

Test Facility

The Test site used by China Certification ICT Co., Ltd (Dongguan) to collect test data is located on the No. 113, Pingkang Road, Dalang Town, Dongguan, Guangdong, China.

The lab has been recognized as the FCC accredited lab under the KDB 974614 D01 and is listed in the FCC Public Access Link (PAL) database, FCC Registration No. : 442868, the FCC Designation No. : CN1314.

The lab has been recognized by Innovation, Science and Economic Development Canada to test to Canadian radio equipment requirements, the CAB identifier: CN0123.

Declarations

China Certification ICT Co., Ltd (Dongguan) is not responsible for the authenticity of any test data provided by the applicant. Data included from the applicant that may affect test results are marked with a triangle symbol “▲”. Customer model name, addresses, names, trademarks etc. are not considered data.

Unless otherwise stated the results shown in this test report refer only to the sample(s) tested.

This report cannot be reproduced except in full, without prior written approval of the Company.

This report is valid only with a valid digital signature. The digital signature may be available only under the Adobe software above version 7.0.

This report may contain data that are not covered by the accreditation scope and shall be marked with an asterisk “★”.

CONTENTS

DOCUMENT REVISION HISTORY	6
1. GENERAL INFORMATION	7
1.1 PRODUCT DESCRIPTION FOR EQUIPMENT UNDER TEST (EUT)	7
1.2 TEST SPECIFICATION, METHODS AND PROCEDURES	8
1.3 SAR LIMITS	9
1.4 FACILITIES.....	10
2. SAR MEASUREMENT SYSTEM	11
3. EQUIPMENT LIST AND CALIBRATION	18
3.1 EQUIPMENTS LIST & CALIBRATION INFORMATION	18
4. SAR MEASUREMENT SYSTEM VERIFICATION	19
4.1 LIQUID VERIFICATION	19
4.2 SYSTEM ACCURACY VERIFICATION	26
4.3 SAR SYSTEM VALIDATION DATA.....	28
5. EUT TEST STRATEGY AND METHODOLOGY	37
5.1 TEST POSITIONS FOR BODY-WORN AND OTHER CONFIGURATIONS	37
5.2 TEST DISTANCE FOR SAR EVALUATION.....	37
5.3 SAR EVALUATION PROCEDURE	38
6. CONDUCTED OUTPUT POWER MEASUREMENT	39
6.1 TEST PROCEDURE.....	39
6.2 DESCRIPTION OF TEST CONFIGURATION.....	40
6.3 MAXIMUM TARGET OUTPUT POWER.....	46
6.4 TEST RESULTS:	48
7. STANDALONE SAR TEST EXCLUSION CONSIDERATIONS	69
7.1 ANTENNA DISTANCE TO EDGE	69
7.2 STANDALONE SAR TEST EXCLUSION CONSIDERATIONS.....	70
7.3 STANDALONE SAR ESTIMATION:	71
7.3 STANDALONE SAR TEST EXCLUSION CONSIDERATIONS:.....	72
7.5 SAR TEST EXCLUSION FOR THE EUT EDGE CONSIDERATIONS RESULT	73
SAR TEST EXCLUSION FOR THE EUT EDGE CONSIDERATIONS DETAIL:	73
8. SAR MEASUREMENT RESULTS	74
8.1 SAR TEST DATA	74

9. SAR Measurement Variability 94
10. SAR SIMULTANEOUS TRANSMISSION DESCRIPTION 95
11. SAR Plots 96
APPENDIX A MEASUREMENT UNCERTAINTY 97
APPENDIX B EUT TEST POSITION PHOTOS 99
APPENDIX C CALIBRATION CERTIFICATES 100

DOCUMENT REVISION HISTORY

Revision Number	Report Number	Description of Revision	Date of Revision
1	CR230952608-SA	Original Report	2023-10-21

1. GENERAL INFORMATION

1.1 Product Description for Equipment under Test (EUT)

Device Type:	Portable
Exposure Category:	Population / Uncontrolled
Antenna Type(s):	Internal Antenna
Body-Worn Accessories:	None
Operation modes:	GPRS/EDGE Data, WCDMA(R99 Data, HSUPA/HSDPA/HSPA+), FDD-LTE, TDD-LTE,WLAN, Bluetooth and NFC
Frequency Band:	GSM 850: 824-849 MHz(TX); 869-894 MHz(RX) PCS 1900: 1850-1910 MHz(TX); 1930-1990 MHz(RX) WCDMA Band 2: 1850-1910 MHz(TX); 1930-1990 MHz(RX) WCDMA Band 4: 1710-1755 MHz(TX); 2110-2155 MHz(RX) WCDMA Band 5: 824-849 MHz(TX); 869-894 MHz(RX) LTE Band 2: 1850-1910 MHz(TX); 1930-1990 MHz(RX) LTE Band 4: 1710-1755 MHz(TX) ; 2110-2155 MHz(RX) LTE Band 5: 824-849 MHz(TX); 869-894 MHz(RX) LTE Band 7: 2500-2570 MHz(TX); 2620-2690 MHz(RX) LTE Band 38: 2570-2620 MHz(TX/RX) LTE Band 40(Lower): 2505-2315 MHz(TX/RX) LTE Band 40(Upper): 2350-2360 MHz(TX/RX) LTE Band 41: 2535-2655 MHz(TX/RX) Wi-Fi 2.4G: 2412-2472 MHz WLAN 5.2G: 5150-5250 MHz WLAN 5.3G: 5250-5350 MHz WLAN 5.6G: 5470-5725MHz WLAN 5.8G: 5725-5850 MHz Bluetooth: 2402-2480MHz BLE_1M:2402-2480MHz BLE_2M:2404-2478MHz NFC: 13.56 MHZ
Conducted RF Power:	GSM 850: 32.02 dBm; PCS 1900: 29.03 dBm WCDMA Band 2: 22.81 dBm WCDMA Band 4: 23.10 dBm WCDMA Band 5: 23.39 dBm LTE Band 2: 21.99 dBm; LTE Band 4: 22.68 dBm LTE Band 5: 23.42 dBm; LTE Band 7: 22.12 dBm LTE Band 38: 22.70 dBm LTE Band 40 Lower: 22.79dBm LTE Band 40 Upper: 23.12dBm LTE Band 41: 22.82 dBm Wi-Fi 2.4G: 15.42 dBm Wi-Fi 5.2G: 9.99 dBm Wi-Fi 5.3G: 9.57 dBm Wi-Fi 5.6G: 12.12 dBm Wi-Fi 5.8G: 12.16 dBm Bluetooth: 5.78 dBm BLE: 7.44 dBm
Rated Input Voltage:	DC 7.4V from Rechargeable Battery
Serial Number:	2B0M-2
Normal Operation:	Handheld, Body Supported

1.2 Test Specification, Methods and Procedures

The tests documented in this report were performed in accordance with FCC 47 CFR § 2.1093, IEEE 1528-2013, the following FCC Published RF exposure KDB procedures:

KDB 447498 D01 General RF Exposure Guidance v06
KDB 865664 D01 SAR Measurement 100 MHz to 6 GHz v01r04
KDB 865664 D02 RF Exposure Reporting v01r02
KDB 941225 D01 3G SAR Procedures v03r01
KDB 941225 D05 SAR for LTE Devices v02r05
KDB 248227 D01 802 11 Wi-Fi SAR v02r02

TCB Workshop April 2019: RF Exposure Procedures

1.3 SAR Limits**FCC Limit**

EXPOSURE LIMITS	SAR (W/kg)	
	(General Population / Uncontrolled Exposure Environment)	(Occupational / Controlled Exposure Environment)
Spatial Average (averaged over the whole body)	0.08	0.4
Spatial Peak (averaged over any 1 g of tissue)	1.60	8.0
Spatial Peak (hands/wrists/feet/ankles averaged over 10 g)	4.0	20.0

Population/Uncontrolled Environments are defined as locations where there is the exposure of individual who have no knowledge or control of their exposure.

Occupational/Controlled Environments are defined as locations where there is exposure that may be incurred by people who are aware of the potential for exposure (i.e. as a result of employment or occupation).

General Population/Uncontrolled environments Spatial Peak limit 1.6W/kg for 1g Body SAR and limit 4.0W/kg for 10g Extremity SAR applied to the EUT.

1.4 FACILITIES

The Test site used by China Certification ICT Co., Ltd (Dongguan) to collect test data is located on the No. 113, Pingkang Road, Dalang Town, Dongguan, Guangdong, China.

The test sites and measurement facilities used to collect data are located at:

<input type="checkbox"/> SAR Lab 1	<input checked="" type="checkbox"/> SAR Lab 2
------------------------------------	---

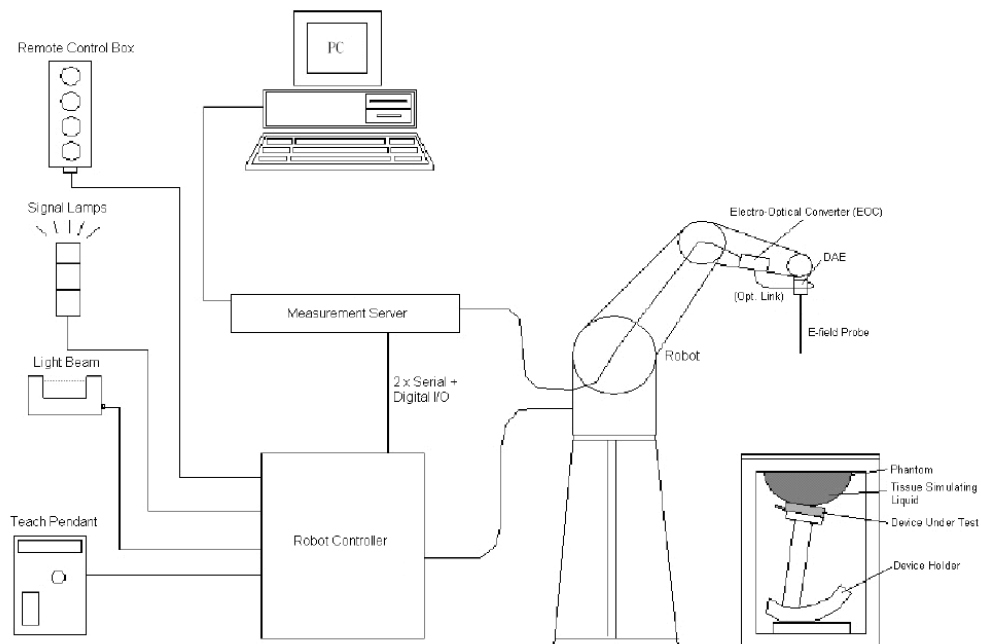
2. SAR MEASUREMENT SYSTEM

These measurements were performed with the automated near-field scanning system DASY5 from Schmid & Partner Engineering AG (SPEAG) which is the Fifth generation of the system shown in the figure hereinafter:



DASY5 System Description

The DASY5 system for performing compliance tests consists of the following items:



- A standard high precision 6-axis robot with controller, teach pendant and software. An arm extension for accommodating the data acquisition electronics (DAE).
- An isotropic field probe optimized and calibrated for the targeted measurement.
- A data acquisition electronics (DAE) which performs the signal application, signal multiplexing, AD-conversion, offset measurements, mechanical surface detection, collision detection, etc. The unit is battery powered with standard or rechargeable batteries. The signal is optically transmitted to the EOC.
- The Electro-optical converter (EOC) performs the conversion from optical to electrical signals for the digital communication to the DAE. To use optical surface detection, a special version of the EOC is required. The EOC signal is transmitted to the measurement server.
- The function of the measurement server is to perform the time critical tasks such as signal filtering, control of the robot operation and fast movement interrupts.
- The Light Beam used is for probe alignment. This improves the (absolute) accuracy of the probe positioning.
- A computer running Win7 professional operating system and the DASY52 software.
- Remote control and teach pendant as well as additional circuitry for robot safety such as warning lamps, etc.
- The phantom, the device holder and other accessories according to the targeted measurement.

DASY5 Measurement Server

The DASY5 measurement server is based on a PC/104 CPU board with a 400MHz Intel ULV Celeron, 128MB chip-disk and 128MB RAM. The necessary circuits for communication with the DAE4 (or DAE3) electronics box, as well as the 16 bit AD-converter system for optical detection and digital I/O interface are contained on the DASY5 I/O board, which is directly connected to the PC/104 bus of the CPU board.



The measurement server performs all real-time data evaluation of field measurements and surface detection, controls robot movements and handles safety operation. The PC operating system cannot interfere with these time critical processes. All connections are supervised by a watchdog, and disconnection of any of the cables to the measurement server will automatically disarm the robot and disable all program-controlled robot movements. Furthermore, the measurement server is equipped with an expansion port which is reserved for future applications. Please note that this expansion port does not have a standardized point out, and therefore only devices provided by SPEAG can be connected. Devices from any other supplier could seriously damage the measurement server.

Data Acquisition Electronics

The data acquisition electronics (DAE4) consist of a highly sensitive electrometer-grade preamplifier with auto-zeroing, a channel and gain-switching multiplexer, a fast 16 bit AD-converter and a command decoder with a control logic unit. Transmission to the measurement server is accomplished through an optical downlink for data and status information, as well as an optical uplink for commands and the clock.

The mechanical probe mounting device includes two different sensor systems for frontal and sideways probe contacts. They are used for mechanical surface detection and probe collision detection.

The input impedance of both the DAE4 as well as of the DAE3 box is 200M Ω ; the inputs are symmetrical and floating. Common mode rejection is above 80 dB.

EX3DV4 E-Field Probes

Frequency	10 MHz to > 6 GHz Linearity: ± 0.2 dB (30 MHz to 6 GHz)
Directivity	± 0.3 dB in TSL (rotation around probe axis) ± 0.5 dB in TSL (rotation normal to probe axis)
Dynamic Range	10 μ W/g to > 100 mW/g Linearity: ± 0.2 dB (noise: typically < 1 μ W/g)
Dimensions	Overall length: 337 mm (Tip: 20 mm) Tip diameter: 2.5 mm (Body: 12 mm) Typical distance from probe tip to dipole centers: 1 mm
Application	High precision dosimetric measurements in any exposure scenario (e.g., very strong gradient fields); the only probe that enables compliance testing for frequencies up to 6 GHz with precision of better 30%.
Compatibility	DASY3, DASY4, DASY52 SAR and higher, EASY4/MRI

Calibration Frequency Points for EX3DV4 E-Field Probes SN: 7522 Calibrated: 2023/5/29

Calibration Frequency Point(MHz)	Frequency Range(MHz)		Conversion Factor		
	From	To	X	Y	Z
750 Head	650	850	9.9	9.9	9.9
900 Head	850	1000	9.37	9.37	9.37
1750 Head	1650	1850	8.15	8.15	8.15
1900 Head	1850	2000	7.94	7.94	7.94
2300 Head	2200	2400	7.67	7.67	7.67
2450 Head	2400	2550	7.42	7.42	7.42
2600 Head	2550	2700	7.23	7.23	7.23
5250 Head	5140	5360	5.36	5.36	5.36
5500 Head	5390	5610	4.85	4.85	4.85
5750 Head	5640	5860	4.9	4.9	4.9

SAM Twin Phantom

The SAM twin phantom is a fiberglass shell phantom with 2mm shell thickness (except the ear region, where shell thickness increases to 6 mm). The phantom has three measurement areas:

- _ Left Head
- _ Right Head
- _ Flat phantom

The phantom table for the DASY systems based on the robots have the size of 100 x 50 x 85 cm (L x W x H). For easy dislocation these tables have fork lift cut outs at the bottom.

The bottom plate contains three pairs of bolts for locking the device holder. The device holder positions are adjusted to the standard measurement positions in the three sections. Only one device holder is necessary if two phantoms are used (e.g., for different liquids)



A white cover is provided to cover the phantom during off-periods to prevent water evaporation and changes in the liquid parameters. Free space scans of devices on top of this phantom cover are possible. Three reference marks are provided on the phantom counter. These reference marks are used to teach the absolute phantom position relative to the robot.

Robots

The DASY5 system uses the high precision industrial robot. The robot offers the same features important for our application:

- High precision (repeatability 0.02mm)
- High reliability (industrial design)
- Low maintenance costs (virtually maintenance free due to direct drive gears; no belt drives)
- Jerk-free straight movements (brushless synchrony motors; no stepper motors)
- Low ELF interference (motor control fields shielded via the closed metallic construction shields)

The above mentioned robots are controlled by the Staubli CS8c robot controllers. All information regarding the use and maintenance of the robot arm and the robot controller is contained on the CDs delivered along with the robot. Paper manuals are available upon request direct from Staubli.

SAR Scan Procedures

Step 1: Power Reference Measurement

The Power Reference Measurement and Power Drift Measurements are for monitoring the power drift of the device under test in the batch process. The minimum distance of probe sensors to surface determines the closest measurement point to phantom surface. The minimum distance of probe sensors to surface is 1.4 mm. This distance cannot be smaller than the distance of sensor calibration points to probe tip as defined in the probe properties.

Step 2: Area Scans

Area scans are defined prior to the measurement process being executed with a user defined variable spacing between each measurement point (integral) allowing low uncertainty measurements to be conducted. Scans defined for FCC applications utilize a 15mm 2 step integral, with 1.5mm interpolation used to locate the peak SAR area used for zoom scan assessments.

Where the system identifies multiple SAR peaks (which are within 25% of peak value) the system will provide the user with the option of assessing each peak location individually for zoom scan averaging.

Area Scan Parameters extracted from KDB 865664 D01 SAR Measurement 100 MHz to 6 GHz

	≤ 3 GHz	> 3 GHz
Maximum distance from closest measurement point (geometric center of probe sensors) to phantom surface	5 mm ± 1 mm	$\frac{1}{2} \cdot \delta \cdot \ln(2)$ mm ± 0.5 mm
Maximum probe angle from probe axis to phantom surface normal at the measurement location	30° ± 1°	20° ± 1°
Maximum area scan spatial resolution: Δx_{Area} , Δy_{Area}	≤ 2 GHz: ≤ 15 mm 2 – 3 GHz: ≤ 12 mm	3 – 4 GHz: ≤ 12 mm 4 – 6 GHz: ≤ 10 mm
	When the x or y dimension of the test device, in the measurement plane orientation, is smaller than the above, the measurement resolution must be ≤ the corresponding x or y dimension of the test device with at least one measurement point on the test device.	

Step 3: Zoom Scan (Cube Scan Averaging)

The averaging zoom scan volume utilized in the DASY5 software is in the shape of a cube and the side dimension of a 1 g or 10 g mass is dependent on the density of the liquid representing the simulated tissue. A density of 1000 kg/m³ is used to represent the head and body tissue density and not the phantom liquid density, in order to be consistent with the definition of the liquid dielectric properties, i.e. the side length of the 1g cube is 10mm, with the side length of the 10g cube is 21.5mm.

Zoom Scan Parameters extracted from KDB 865664 D01 SAR Measurement 100 MHz to 6 GHz

			≤ 3 GHz	> 3 GHz
Maximum zoom scan spatial resolution: Δx_{Zoom} , Δy_{Zoom}			≤ 2 GHz: ≤ 8 mm 2 – 3 GHz: ≤ 5 mm*	3 – 4 GHz: ≤ 5 mm* 4 – 6 GHz: ≤ 4 mm*
Maximum zoom scan spatial resolution, normal to phantom surface	uniform grid: $\Delta z_{Zoom}(n)$		≤ 5 mm	3 – 4 GHz: ≤ 4 mm 4 – 5 GHz: ≤ 3 mm 5 – 6 GHz: ≤ 2 mm
	graded grid	$\Delta z_{Zoom}(1)$: between 1 st two points closest to phantom surface	≤ 4 mm	3 – 4 GHz: ≤ 3 mm 4 – 5 GHz: ≤ 2.5 mm 5 – 6 GHz: ≤ 2 mm
		$\Delta z_{Zoom}(n>1)$: between subsequent points	≤ 1.5 · $\Delta z_{Zoom}(n-1)$ mm	
Minimum zoom scan volume	x, y, z	≥ 30 mm	3 – 4 GHz: ≥ 28 mm 4 – 5 GHz: ≥ 25 mm 5 – 6 GHz: ≥ 22 mm	
Note: δ is the penetration depth of a plane-wave at normal incidence to the tissue medium; see IEEE Std 1528-2013 for details. * When zoom scan is required and the <i>reported</i> SAR from the <i>area scan based 1-g SAR estimation</i> procedures of KDB Publication 447498 is ≤ 1.4 W/kg, ≤ 8 mm, ≤ 7 mm and ≤ 5 mm zoom scan resolution may be applied, respectively, for 2 GHz to 3 GHz, 3 GHz to 4 GHz and 4 GHz to 6 GHz.				

Step 4: Power Drift Measurement

The Power Drift Measurement measures the field at the same location as the most recent power reference measurement within the same procedure, and with the same settings. The Power Drift Measurement gives the field difference in dB from the reading conducted within the last Power Reference Measurement. This allows a user to monitor the power drift of the device under test within a batch process. The measurement procedure is the same as Step 1.

When the cube intersects with the surface of the phantom, it is oriented so that 3 vertices touch the surface of the shell or the center of a face is tangent to the surface. The face of the cube closest to the surface is modified in order to conform to the tangent surface.

The zoom scan integer steps can be user defined so as to reduce uncertainty, but normal practice for typical test applications (including FCC) utilize a physical step of 7 x 7 x 7 (5mmx5mmx5mm) providing a volume of 30 mm in the X & Y & Z axis.

Tissue Dielectric Parameters for Head and Body Phantoms

The head tissue dielectric parameters recommended by the IEC 62209-1:2016

Recommended Tissue Dielectric Parameters for Head liquid

Table A.3 – Dielectric properties of the head tissue-equivalent liquid

Frequency MHz	Relative permittivity ϵ_r	Conductivity (σ) S/m
300	45,3	0,87
450	43,5	0,87
<i>750</i>	<i>41,9</i>	<i>0,89</i>
835	41,5	0,90
900	41,5	0,97
1 450	40,5	1,20
<i>1 500</i>	<i>40,4</i>	<i>1,23</i>
<i>1 640</i>	<i>40,2</i>	<i>1,31</i>
<i>1 750</i>	<i>40,1</i>	<i>1,37</i>
1 800	40,0	1,40
1 900	40,0	1,40
2 000	40,0	1,40
<i>2 100</i>	<i>39,8</i>	<i>1,49</i>
<i>2 300</i>	<i>39,5</i>	<i>1,67</i>
2 450	39,2	1,80
<i>2 600</i>	<i>39,0</i>	<i>1,96</i>
3 000	38,5	2,40
<i>3 500</i>	<i>37,9</i>	<i>2,91</i>
<i>4 000</i>	<i>37,4</i>	<i>3,43</i>
<i>4 500</i>	<i>36,8</i>	<i>3,94</i>
<i>5 000</i>	<i>36,2</i>	<i>4,45</i>
<i>5 200</i>	<i>36,0</i>	<i>4,66</i>
<i>5 400</i>	<i>35,8</i>	<i>4,86</i>
<i>5 600</i>	<i>35,5</i>	<i>5,07</i>
<i>5 800</i>	<i>35,3</i>	<i>5,27</i>
6 000	35,1	5,48

NOTE For convenience, permittivity and conductivity values at those frequencies which are not part of the original data provided by Drossos et al. [33] or the extension to 5 800 MHz are provided (i.e. the values shown *in italics*). These values were linearly interpolated between the values in this table that are immediately above and below these values, except the values at 6 000 MHz that were linearly extrapolated from the values at 3 000 MHz and 5 800 MHz.

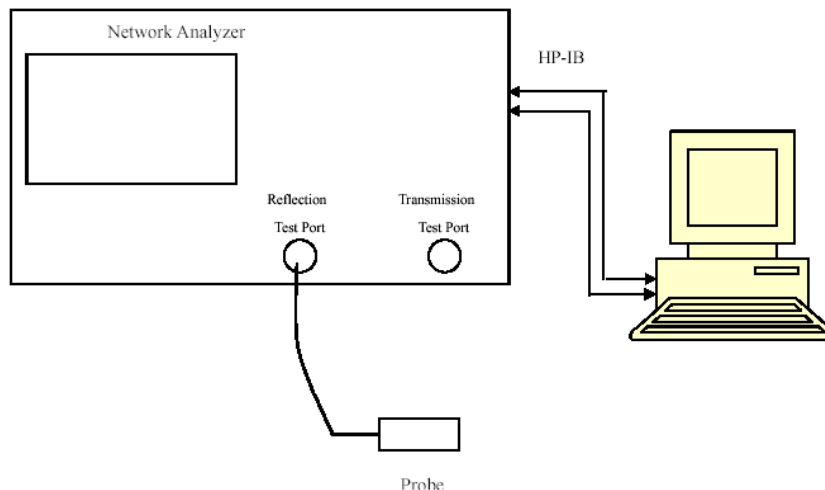
3. EQUIPMENT LIST AND CALIBRATION

3.1 Equipments List & Calibration Information

DASY5 Test Software	DASY52.8	N/A	NCR	NCR
DASY5 Measurement Server	DASY5 5.0.28	1123	NCR	NCR
Data Acquisition Electronics	DAE4	1354	2022/10/31	2023/10/30
E-Field Probe	EX3DV4	7522	2023/5/29	2024/5/28
Mounting Device	MD4HHTV5	BJPCTC0152	NCR	NCR
Twin SAM	Twin SAM V5.0	1470	NCR	NCR
Dipole, 750 MHz	D750V3	1230	2023/3/24	2026/3/23
Dipole, 1750 MHz	D1750V2	1200	2023/3/27	2026/3/26
Dipole, 1900 MHz	D1900V2	5d251	2023/3/27	2026/3/26
Dipole, 2300 MHz	D2300V2	1135	2023/3/27	2026/3/26
Dipole, 2450 MHz	D2450V2	1102	2023/3/27	2026/3/26
Dipole, 2600 MHz	D2600V2	1206	2023/3/27	2026/3/26
Dipole,5GHz	D5GHzV2	1246	2022/11/1	2025/10/31
Simulated Tissue Liquid Head(500-9500 MHz)	HBBL600-10000V6	220728-1	Each Time	/
Network Analyzer	8753B	2828A00170	2022/10/24	2023/10/23
Dielectric assessment kit	1319	SM DAK 040 CA	NCR	NCR
MXG Vector Signal Generator	N5182B	MY51350144	2023/3/31	2024/3/30
Power Meter	ML2495A	1106009	2023/8/4	2024/8/3
Pulse Power Sensor	MA2411A	10780	2023/8/4	2024/8/3
Power Amplifier	ZHL-5W-202-S+	416402204	NCR	NCR
Power Amplifier	ZVE-6W-83+	637202210	NCR	NCR
Directional Coupler	441493	520Z	NCR	NCR
Attenuator	20dB, 100W	LN749	NCR	NCR
Attenuator	6dB, 150W	2754	NCR	NCR
Universal Radio Communication Tester	CMU200	110 825	2023/3/31	2024/3/30
Wideband Radio Communication Tester	CMW500	149218	2023/3/31	2024/3/30
Spectrum Analyzer	FSV40	101943	2023/3/31	2024/3/30

4. SAR MEASUREMENT SYSTEM VERIFICATION

4.1 Liquid Verification



Liquid Verification Setup Block Diagram

Liquid Verification Results

Frequency (MHz)	Liquid Type	Liquid Parameter		Target Value		Delta(%)		Tolerance (%)
		ϵ_r	σ (S/m)	ϵ_r	σ (S/m)	$\Delta \epsilon_r$	$\Delta \sigma$	
700	Simulated Tissue Liquid Head	42.363	0.904	42.17	0.89	0.46	1.57	± 5
710	Simulated Tissue Liquid Head	42.331	0.900	42.11	0.89	0.52	1.12	± 5
720	Simulated Tissue Liquid Head	42.299	0.895	42.06	0.89	0.57	0.56	± 5
730	Simulated Tissue Liquid Head	42.266	0.891	42.01	0.89	0.61	0.11	± 5
740	Simulated Tissue Liquid Head	42.234	0.886	41.95	0.89	0.68	-0.45	± 5
750	Simulated Tissue Liquid Head	42.202	0.882	41.90	0.89	0.72	-0.90	± 5
760	Simulated Tissue Liquid Head	42.430	0.882	41.85	0.89	1.39	-0.90	± 5
770	Simulated Tissue Liquid Head	42.659	0.881	41.81	0.89	2.03	-1.01	± 5
780	Simulated Tissue Liquid Head	42.887	0.881	41.76	0.89	2.70	-1.01	± 5
790	Simulated Tissue Liquid Head	43.115	0.881	41.71	0.89	3.37	-1.01	± 5
800	Simulated Tissue Liquid Head	43.344	0.880	41.67	0.90	4.02	-2.22	± 5
810	Simulated Tissue Liquid Head	43.262	0.883	41.63	0.90	3.92	-1.89	± 5
820	Simulated Tissue Liquid Head	43.181	0.887	41.60	0.90	3.80	-1.44	± 5
830	Simulated Tissue Liquid Head	43.100	0.890	41.57	0.91	3.68	-2.20	± 5
840	Simulated Tissue Liquid Head	43.018	0.893	41.53	0.91	3.58	-1.87	± 5
850	Simulated Tissue Liquid Head	42.937	0.896	41.50	0.92	3.46	-2.61	± 5

*Liquid Verification above was performed on 2023/10/01.

Frequency (MHz)	Liquid Type	Liquid Parameter		Target Value		Delta(%)		Tolerance (%)
		ϵ_r	σ (S/m)	ϵ_r	σ (S/m)	$\Delta \epsilon_r$	$\Delta \sigma$	
1650	Simulated Tissue Liquid Head	41.148	1.295	40.19	1.32	2.38	-1.89	± 5
1660	Simulated Tissue Liquid Head	41.054	1.312	40.18	1.32	2.18	-0.61	± 5
1670	Simulated Tissue Liquid Head	40.959	1.328	40.17	1.33	1.96	-0.15	± 5
1680	Simulated Tissue Liquid Head	40.865	1.345	40.16	1.33	1.76	1.13	± 5
1690	Simulated Tissue Liquid Head	40.771	1.362	40.16	1.34	1.52	1.64	± 5
1700	Simulated Tissue Liquid Head	40.677	1.379	40.15	1.34	1.31	2.91	± 5
1710	Simulated Tissue Liquid Head	40.732	1.375	40.14	1.35	1.47	1.85	± 5
1720	Simulated Tissue Liquid Head	40.787	1.370	40.13	1.35	1.64	1.48	± 5
1730	Simulated Tissue Liquid Head	40.842	1.366	40.12	1.36	1.80	0.44	± 5
1740	Simulated Tissue Liquid Head	40.898	1.362	40.11	1.36	1.96	0.15	± 5
1750	Simulated Tissue Liquid Head	40.953	1.357	40.10	1.37	2.13	-0.95	± 5
1760	Simulated Tissue Liquid Head	41.035	1.377	40.08	1.38	2.38	-0.22	± 5
1770	Simulated Tissue Liquid Head	41.118	1.397	40.06	1.38	2.64	1.23	± 5
1780	Simulated Tissue Liquid Head	41.200	1.417	40.04	1.39	2.90	1.94	± 5
1790	Simulated Tissue Liquid Head	41.283	1.437	40.02	1.39	3.16	3.38	± 5
1800	Simulated Tissue Liquid Head	41.365	1.457	40.00	1.40	3.41	4.07	± 5
1810	Simulated Tissue Liquid Head	41.383	1.453	40.00	1.40	3.46	3.79	± 5
1820	Simulated Tissue Liquid Head	41.401	1.449	40.00	1.40	3.50	3.50	± 5
1830	Simulated Tissue Liquid Head	41.419	1.445	40.00	1.40	3.55	3.21	± 5
1840	Simulated Tissue Liquid Head	41.437	1.441	40.00	1.40	3.59	2.93	± 5
1850	Simulated Tissue Liquid Head	41.455	1.437	40.00	1.40	3.64	2.64	± 5

*Liquid Verification above was performed on 2023/10/03.

Frequency (MHz)	Liquid Type	Liquid Parameter		Target Value		Delta(%)		Tolerance (%)
		ϵ_r	O (S/m)	ϵ_r	O(S/m)	$\Delta \epsilon_r$	ΔO	
1850	Simulated Tissue Liquid Head	41.455	1.437	40.00	1.40	3.64	2.64	±5
1860	Simulated Tissue Liquid Head	41.452	1.417	40.00	1.40	3.63	1.21	±5
1870	Simulated Tissue Liquid Head	41.449	1.398	40.00	1.40	3.62	-0.14	±5
1880	Simulated Tissue Liquid Head	41.446	1.378	40.00	1.40	3.61	-1.57	±5
1890	Simulated Tissue Liquid Head	41.443	1.358	40.00	1.40	3.61	-3.00	±5
1900	Simulated Tissue Liquid Head	41.440	1.338	40.00	1.40	3.60	-4.43	±5
1910	Simulated Tissue Liquid Head	41.465	1.339	40.00	1.40	3.66	-4.36	±5
1920	Simulated Tissue Liquid Head	41.489	1.340	40.00	1.40	3.72	-4.29	±5
1930	Simulated Tissue Liquid Head	41.514	1.341	40.00	1.40	3.79	-4.21	±5
1940	Simulated Tissue Liquid Head	41.538	1.342	40.00	1.40	3.84	-4.14	±5
1950	Simulated Tissue Liquid Head	41.563	1.343	40.00	1.40	3.91	-4.07	±5
1960	Simulated Tissue Liquid Head	41.494	1.361	40.00	1.40	3.74	-2.79	±5
1970	Simulated Tissue Liquid Head	41.426	1.378	40.00	1.40	3.57	-1.57	±5
1980	Simulated Tissue Liquid Head	41.358	1.396	40.00	1.40	3.39	-0.29	±5
1990	Simulated Tissue Liquid Head	41.290	1.414	40.00	1.40	3.23	1.00	±5
2000	Simulated Tissue Liquid Head	41.221	1.432	40.00	1.40	3.05	2.29	±5

*Liquid Verification above was performed on 2023/10/04.

Frequency (MHz)	Liquid Type	Liquid Parameter		Target Value		Delta(%)		Tolerance (%)
		ϵ_r	σ (S/m)	ϵ_r	σ (S/m)	$\Delta \epsilon_r$	$\Delta \sigma$	
2300	Simulated Tissue Liquid Head	39.837	1.629	39.50	1.67	0.85	-2.46	± 5
2310	Simulated Tissue Liquid Head	39.769	1.637	39.48	1.68	0.73	-2.56	± 5
2320	Simulated Tissue Liquid Head	39.701	1.645	39.46	1.69	0.61	-2.66	± 5
2330	Simulated Tissue Liquid Head	39.633	1.652	39.44	1.70	0.49	-2.82	± 5
2340	Simulated Tissue Liquid Head	39.565	1.660	39.42	1.70	0.37	-2.35	± 5
2350	Simulated Tissue Liquid Head	39.498	1.667	39.40	1.71	0.25	-2.51	± 5
2360	Simulated Tissue Liquid Head	39.616	1.697	39.38	1.72	0.60	-1.34	± 5
2370	Simulated Tissue Liquid Head	39.734	1.727	39.36	1.73	0.95	-0.17	± 5
2380	Simulated Tissue Liquid Head	39.852	1.756	39.34	1.74	1.30	0.92	± 5
2390	Simulated Tissue Liquid Head	39.970	1.786	39.32	1.75	1.65	2.06	± 5
2400	Simulated Tissue Liquid Head	40.088	1.815	39.30	1.76	2.01	3.13	± 5

*Liquid Verification above was performed on 2023/10/05.

Frequency (MHz)	Liquid Type	Liquid Parameter		Target Value		Delta(%)		Tolerance (%)
		ϵ_r	σ (S/m)	ϵ_r	σ (S/m)	$\Delta \epsilon_r$	$\Delta \sigma$	
2400	Simulated Tissue Liquid Head	40.088	1.815	39.30	1.76	2.01	3.13	± 5
2410	Simulated Tissue Liquid Head	39.950	1.826	39.28	1.77	1.71	3.16	± 5
2420	Simulated Tissue Liquid Head	39.811	1.837	39.26	1.77	1.40	3.79	± 5
2430	Simulated Tissue Liquid Head	39.672	1.847	39.24	1.78	1.10	3.76	± 5
2440	Simulated Tissue Liquid Head	39.534	1.858	39.22	1.79	0.80	3.80	± 5
2450	Simulated Tissue Liquid Head	39.395	1.869	39.20	1.80	0.50	3.83	± 5
2460	Simulated Tissue Liquid Head	39.654	1.881	39.19	1.81	1.18	3.92	± 5
2470	Simulated Tissue Liquid Head	39.913	1.893	39.17	1.82	1.90	4.01	± 5
2480	Simulated Tissue Liquid Head	40.172	1.904	39.16	1.83	2.58	4.04	± 5
2490	Simulated Tissue Liquid Head	40.431	1.916	39.15	1.84	3.27	4.13	± 5
2500	Simulated Tissue Liquid Head	40.690	1.928	39.13	1.85	3.99	4.22	± 5
2510	Simulated Tissue Liquid Head	40.596	1.914	39.12	1.86	3.77	2.90	± 5
2520	Simulated Tissue Liquid Head	40.501	1.901	39.11	1.87	3.56	1.66	± 5
2530	Simulated Tissue Liquid Head	40.407	1.887	39.09	1.89	3.37	-0.16	± 5
2540	Simulated Tissue Liquid Head	40.312	1.873	39.08	1.90	3.15	-1.42	± 5
2550	Simulated Tissue Liquid Head	40.218	1.860	39.07	1.91	2.94	-2.62	± 5

*Liquid Verification above was performed on 2023/10/06.

Frequency (MHz)	Liquid Type	Liquid Parameter		Target Value		Delta(%)		Tolerance (%)
		ϵ_r	σ (S/m)	ϵ_r	σ (S/m)	$\Delta \epsilon_r$	$\Delta \sigma$	
2550	Simulated Tissue Liquid Head	40.218	1.860	39.07	1.91	2.94	-2.62	± 5
2560	Simulated Tissue Liquid Head	40.303	1.887	39.05	1.92	3.21	-1.72	± 5
2570	Simulated Tissue Liquid Head	40.388	1.914	39.04	1.93	3.45	-0.83	± 5
2580	Simulated Tissue Liquid Head	40.473	1.941	39.03	1.94	3.70	0.05	± 5
2590	Simulated Tissue Liquid Head	40.558	1.968	39.01	1.95	3.97	0.92	± 5
2600	Simulated Tissue Liquid Head	40.643	1.995	39.00	1.96	4.21	1.79	± 5
2610	Simulated Tissue Liquid Head	40.519	1.983	38.99	1.97	3.92	0.66	± 5
2620	Simulated Tissue Liquid Head	40.395	1.970	38.98	1.98	3.63	-0.51	± 5
2630	Simulated Tissue Liquid Head	40.271	1.957	38.96	1.99	3.36	-1.66	± 5
2640	Simulated Tissue Liquid Head	40.147	1.944	38.95	2.00	3.07	-2.80	± 5
2650	Simulated Tissue Liquid Head	40.023	1.931	38.94	2.02	2.78	-4.41	± 5
2660	Simulated Tissue Liquid Head	40.058	1.976	38.93	2.03	2.90	-2.66	± 5
2670	Simulated Tissue Liquid Head	40.094	2.021	38.91	2.04	3.04	-0.93	± 5
2680	Simulated Tissue Liquid Head	40.129	2.066	38.90	2.05	3.16	0.78	± 5
2690	Simulated Tissue Liquid Head	40.165	2.111	38.89	2.06	3.28	2.48	± 5
2700	Simulated Tissue Liquid Head	40.200	2.155	38.88	2.07	3.40	4.11	± 5

*Liquid Verification above was performed on 2023/10/06.

Frequency (MHz)	Liquid Type	Liquid Parameter		Target Value		Delta(%)		Tolerance (%)
		ϵ_r	σ (S/m)	ϵ_r	σ (S/m)	$\Delta \epsilon_r$	$\Delta \sigma$	
5150	Simulated Tissue Liquid Head	36.961	4.604	36.05	4.61	2.53	-0.13	± 5
5160	Simulated Tissue Liquid Head	37.036	4.652	36.04	4.62	2.76	0.69	± 5
5170	Simulated Tissue Liquid Head	37.110	4.700	36.03	4.63	3.00	1.51	± 5
5180	Simulated Tissue Liquid Head	37.185	4.748	36.02	4.64	3.23	2.33	± 5
5190	Simulated Tissue Liquid Head	37.260	4.795	36.01	4.65	3.47	3.12	± 5
5200	Simulated Tissue Liquid Head	37.335	4.843	36.00	4.66	3.71	3.93	± 5
5210	Simulated Tissue Liquid Head	37.380	4.795	35.99	4.67	3.86	2.68	± 5
5220	Simulated Tissue Liquid Head	37.426	4.747	35.98	4.68	4.02	1.43	± 5
5230	Simulated Tissue Liquid Head	37.472	4.699	35.97	4.69	4.18	0.19	± 5
5240	Simulated Tissue Liquid Head	37.517	4.651	35.96	4.70	4.33	-1.04	± 5
5250	Simulated Tissue Liquid Head	37.563	4.603	35.95	4.71	4.49	-2.27	± 5
5260	Simulated Tissue Liquid Head	37.290	4.620	35.94	4.72	3.76	-2.12	± 5
5270	Simulated Tissue Liquid Head	37.018	4.638	35.93	4.73	3.03	-1.95	± 5
5280	Simulated Tissue Liquid Head	36.745	4.656	35.92	4.74	2.30	-1.77	± 5
5290	Simulated Tissue Liquid Head	36.473	4.673	35.91	4.75	1.57	-1.62	± 5
5300	Simulated Tissue Liquid Head	36.200	4.691	35.90	4.76	0.84	-1.45	± 5
5310	Simulated Tissue Liquid Head	36.426	4.711	35.89	4.77	1.49	-1.24	± 5
5320	Simulated Tissue Liquid Head	36.652	4.731	35.88	4.78	2.15	-1.03	± 5

*Liquid Verification above was performed on 2023/10/07.

Frequency (MHz)	Liquid Type	Liquid Parameter		Target Value		Delta(%)		Tolerance (%)
		ϵ_r	σ (S/m)	ϵ_r	σ (S/m)	$\Delta \epsilon_r$	$\Delta \sigma$	
5500	Simulated Tissue Liquid Head	36.636	4.853	35.65	4.97	2.77	-2.35	±5
5510	Simulated Tissue Liquid Head	36.763	4.872	35.64	4.98	3.15	-2.17	±5
5520	Simulated Tissue Liquid Head	36.890	4.891	35.62	4.99	3.57	-1.98	±5
5530	Simulated Tissue Liquid Head	37.017	4.910	35.61	5.00	3.95	-1.80	±5
5540	Simulated Tissue Liquid Head	37.144	4.929	35.59	5.01	4.37	-1.62	±5
5550	Simulated Tissue Liquid Head	37.272	4.948	35.58	5.02	4.76	-1.43	±5
5560	Simulated Tissue Liquid Head	36.950	4.957	35.56	5.03	3.91	-1.45	±5
5570	Simulated Tissue Liquid Head	36.629	4.966	35.55	5.04	3.04	-1.47	±5
5580	Simulated Tissue Liquid Head	36.307	4.975	35.53	5.05	2.19	-1.49	±5
5590	Simulated Tissue Liquid Head	35.986	4.983	35.52	5.06	1.31	-1.52	±5
5600	Simulated Tissue Liquid Head	35.664	4.992	35.50	5.07	0.46	-1.54	±5
5610	Simulated Tissue Liquid Head	35.789	5.011	35.49	5.08	0.84	-1.36	±5
5620	Simulated Tissue Liquid Head	35.914	5.030	35.48	5.09	1.22	-1.18	±5
5630	Simulated Tissue Liquid Head	36.038	5.049	35.47	5.10	1.60	-1.00	±5
5640	Simulated Tissue Liquid Head	36.163	5.068	35.46	5.11	1.98	-0.82	±5
5650	Simulated Tissue Liquid Head	36.288	5.087	35.45	5.12	2.36	-0.64	±5
5660	Simulated Tissue Liquid Head	36.201	5.071	35.44	5.13	2.15	-1.15	±5
5670	Simulated Tissue Liquid Head	36.115	5.056	35.43	5.14	1.93	-1.63	±5
5680	Simulated Tissue Liquid Head	36.028	5.040	35.42	5.15	1.72	-2.14	±5
5690	Simulated Tissue Liquid Head	35.942	5.024	35.41	5.16	1.50	-2.64	±5
5700	Simulated Tissue Liquid Head	35.855	5.009	35.40	5.17	1.29	-3.11	±5
5710	Simulated Tissue Liquid Head	35.892	5.066	35.39	5.18	1.42	-2.20	±5
5720	Simulated Tissue Liquid Head	35.928	5.124	35.38	5.19	1.55	-1.27	±5

*Liquid Verification above was performed on 2023/10/07.

Frequency (MHz)	Liquid Type	Liquid Parameter		Target Value		Delta(%)		Tolerance (%)
		ϵ_r	σ (S/m)	ϵ_r	σ (S/m)	$\Delta \epsilon_r$	$\Delta \sigma$	
5740	Simulated Tissue Liquid Head	36.002	5.240	35.36	5.21	1.82	0.58	±5
5750	Simulated Tissue Liquid Head	36.039	5.298	35.35	5.22	1.95	1.49	±5
5760	Simulated Tissue Liquid Head	35.914	5.282	35.34	5.23	1.62	0.99	±5
5770	Simulated Tissue Liquid Head	35.790	5.265	35.33	5.24	1.30	0.48	±5
5780	Simulated Tissue Liquid Head	35.666	5.249	35.32	5.25	0.98	-0.02	±5
5790	Simulated Tissue Liquid Head	35.541	5.233	35.31	5.26	0.65	-0.51	±5
5800	Simulated Tissue Liquid Head	35.417	5.216	35.30	5.27	0.33	-1.02	±5
5810	Simulated Tissue Liquid Head	35.586	5.264	35.29	5.28	0.84	-0.30	±5
5820	Simulated Tissue Liquid Head	35.756	5.312	35.28	5.29	1.35	0.42	±5
5830	Simulated Tissue Liquid Head	35.925	5.360	35.27	5.30	1.86	1.13	±5
5840	Simulated Tissue Liquid Head	36.094	5.408	35.26	5.31	2.37	1.85	±5
5850	Simulated Tissue Liquid Head	36.263	5.456	35.25	5.32	2.87	2.56	±5

*Liquid Verification above was performed on 2023/10/07.

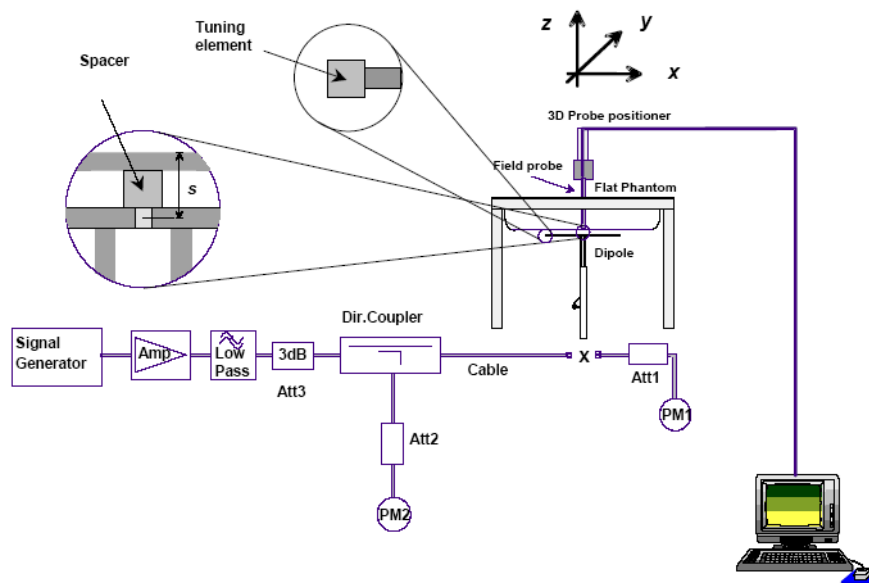
4.2 System Accuracy Verification

Prior to the assessment, the system validation kit was used to test whether the system was operating within its specifications of $\pm 10\%$. The validation results are tabulated below. And also the corresponding SAR plot is attached as well in the SAR plots files.

The spacing distances in the **System Verification Setup Block Diagram** is given by the following:

- $s = 15 \text{ mm} \pm 0,2 \text{ mm}$ for $300 \text{ MHz} \leq f \leq 1\,000 \text{ MHz}$;
- $s = 10 \text{ mm} \pm 0,2 \text{ mm}$ for $1\,000 \text{ MHz} < f \leq 3\,000 \text{ MHz}$;
- $s = 10 \text{ mm} \pm 0,2 \text{ mm}$ for $3\,000 \text{ MHz} < f \leq 6\,000 \text{ MHz}$.

System Verification Setup Block Diagram



System Accuracy Check Results

Date	Frequency Band	Liquid Type	Input Power (mW)	Measured SAR (W/kg)		Normalized to 1W (W/kg)	Target Value (W/kg)	Delta (%)	Tolerance (%)
2023/10/01	750 MHz	Simulated Tissue Liquid Head	100	1g	0.828	8.28	8.49	-2.47	±10
2023/10/01	750 MHz	Simulated Tissue Liquid Head	100	10g	0.526	5.26	5.54	-5.05	±10
2023/10/03	1750 MHz	Simulated Tissue Liquid Head	100	1g	3.71	37.1	35.8	3.63	±10
2023/10/03	1750 MHz	Simulated Tissue Liquid Head	100	10g	1.86	18.6	18.8	-1.06	±10
2023/10/04	1900 MHz	Simulated Tissue Liquid Head	100	1g	3.97	39.7	38.9	2.06	±10
2023/10/04	1900 MHz	Simulated Tissue Liquid Head	100	10g	2.21	22.1	20.3	8.87	±10
2023/10/05	2300 MHz	Simulated Tissue Liquid Head	100	1g	4.64	46.4	48.2	-3.73	±10
2023/10/05	2300 MHz	Simulated Tissue Liquid Head	100	10g	2.43	24.3	23.4	3.85	±10
2023/10/06	2450 MHz	Simulated Tissue Liquid Head	100	1g	4.72	47.2	50.9	-7.27	±10
2023/10/06	2450 MHz	Simulated Tissue Liquid Head	100	10g	2.58	25.8	24.1	7.05	±10
2023/10/06	2600 MHz	Simulated Tissue Liquid Head	100	1g	5.85	58.5	56	4.46	±10
2023/10/06	2600 MHz	Simulated Tissue Liquid Head	100	10g	2.61	26.1	25.3	3.16	±10
2023/10/07	5250 MHz	Simulated Tissue Liquid Head	100	1g	7.84	78.4	77.5	1.16	±10
2023/10/07	5250 MHz	Simulated Tissue Liquid Head	100	10g	2.37	23.7	22	7.73	±10
2023/10/07	5600 MHz	Simulated Tissue Liquid Head	100	1g	8.16	81.6	80.7	1.12	±10
2023/10/07	5600 MHz	Simulated Tissue Liquid Head	100	10g	2.42	24.2	22.8	6.14	±10
2023/10/07	5750 MHz	Simulated Tissue Liquid Head	100	1g	8.03	80.3	78.4	2.42	±10
2023/10/07	5750 MHz	Simulated Tissue Liquid Head	100	10g	2.32	23.2	22	5.46	±10

*The SAR values above are normalized to 1 Watt forward power.

4.3 SAR SYSTEM VALIDATION DATA

System Performance 750 MHz

DUT: D750V3; Type: 750 MHz; Serial: 1230

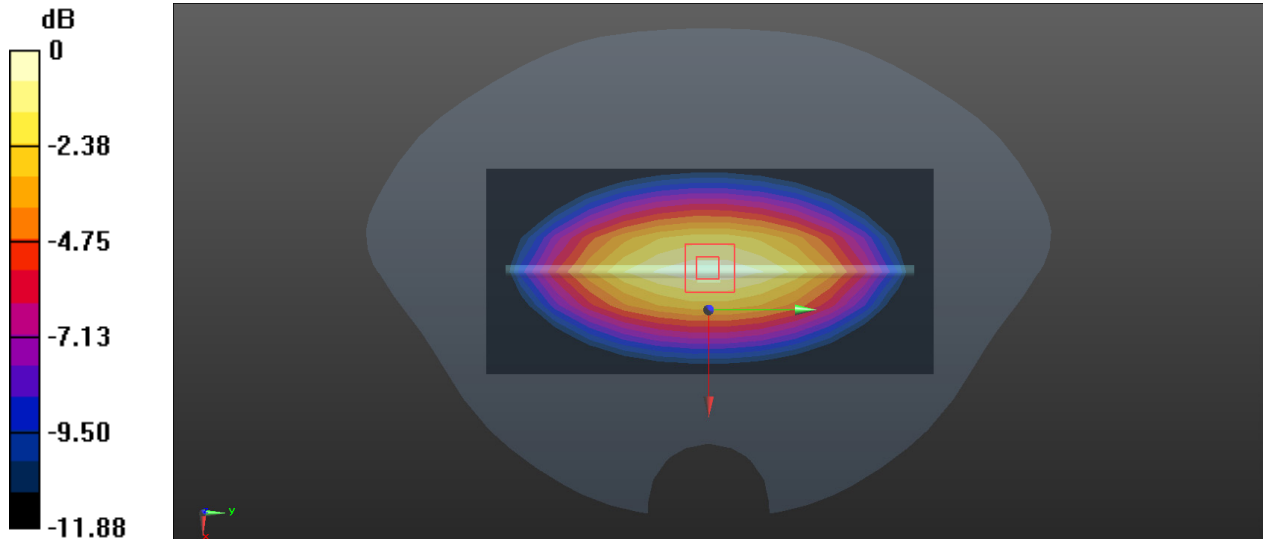
Communication System: CW; Frequency: 750 MHz; Duty Cycle: 1:1
Medium parameters used: $f = 750$ MHz; $\sigma = 0.882$ S/m; $\epsilon_r = 42.202$; $\rho = 1000$ kg/m³
Phantom section: Flat Section

DASY5 Configuration:

- Probe: EX3DV4 - SN7522; ConvF(9.9, 9.9, 9.9) @ 750 MHz;
- Sensor-Surface: 1.4mm (Mechanical Surface Detection)
- Electronics: DAE4 Sn1354; Calibrated: 2022/10/31
- Phantom: Twin SAM; Type: Twin SAM V5.0; Serial: TP:1470
- Measurement SW: DASY52, Version 52.10 (2); SEMCAD X Version 14.6.12 (7470)

Area Scan (7x14x1): Measurement grid: dx=15mm, dy=15mm
Maximum value of SAR (measured) = 1.16 W/kg

Zoom Scan (5x5x7)/Cube 0: Measurement grid: dx=8mm, dy=8mm, dz=5mm
Reference Value = 30.44 V/m; Power Drift = 0.11 dB
Peak SAR (extrapolated) = 1.21 W/kg
SAR(1 g) = 0.828 W/kg; SAR(10 g) = 0.526 W/kg
Maximum value of SAR (measured) = 1.13 W/kg



0 dB = 1.13 W/kg = 0.53 dBW/kg

System Performance 1750MHz**DUT: D1750V2; Type: 1750 MHz; Serial: 1200**

Communication System: CW; Frequency: 1750 MHz; Duty Cycle: 1:1

Medium parameters used: $f = 1750$ MHz; $\sigma = 1.357$ S/m; $\epsilon_r = 40.953$; $\rho = 1000$ kg/m³

Phantom section: Flat Section

DASY5 Configuration:

- Probe: EX3DV4 - SN7522; ConvF(8.15, 8.15, 8.15) @ 1750 MHz;
- Sensor-Surface: 1.4mm (Mechanical Surface Detection)
- Electronics: DAE4 Sn1354; Calibrated: 2022/10/31
- Phantom: Twin SAM; Type: Twin SAM V5.0; Serial: TP:1470
- Measurement SW: DASY52, Version 52.10 (2); SEMCAD X Version 14.6.12 (7470)

Area Scan (5x6x1): Measurement grid: dx=15mm, dy=15mm

Maximum value of SAR (measured) = 5.62 W/kg

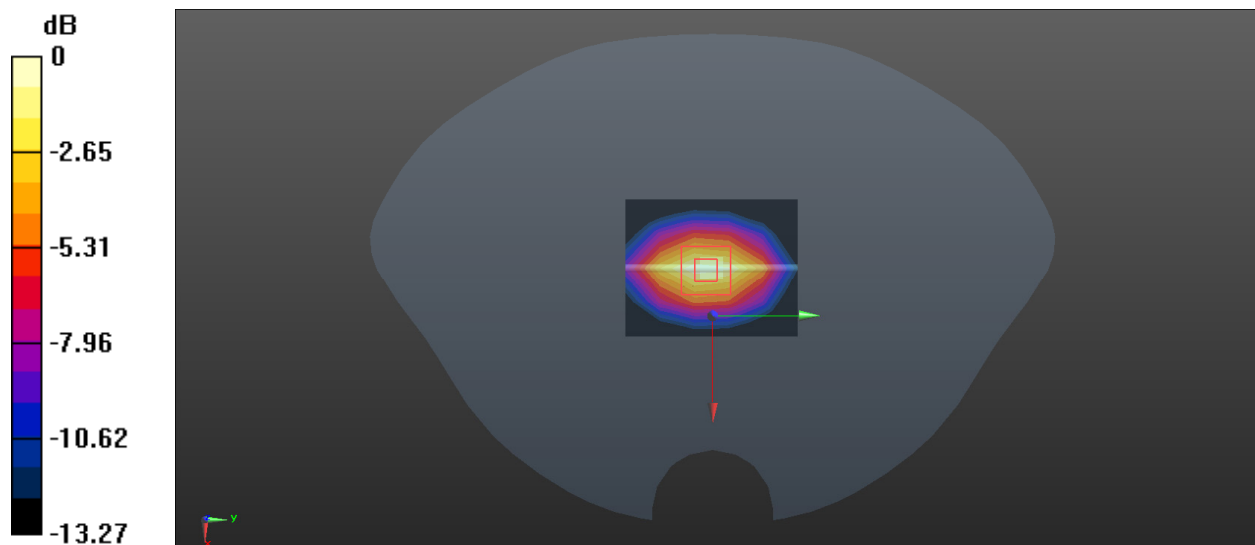
Zoom Scan (5x5x7)/Cube 0: Measurement grid: dx=8mm, dy=8mm, dz=5mm

Reference Value = 64.51 V/m; Power Drift = -0.07 dB

Peak SAR (extrapolated) = 7.14 W/kg

SAR(1 g) = 3.71 W/kg; SAR(10 g) = 1.86 W/kg

Maximum value of SAR (measured) = 5.73 W/kg



System Performance 1900MHz**DUT: D1900V2; Type: 1900 MHz; Serial: 5d251**

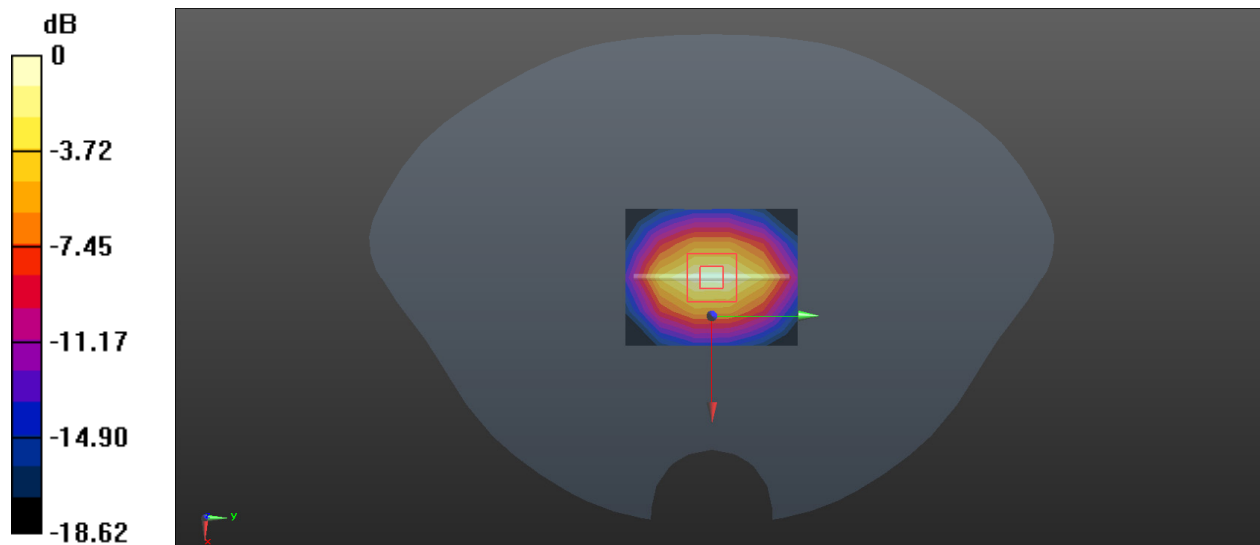
Communication System: CW; Frequency: 1900 MHz; Duty Cycle: 1:1
Medium parameters used: $f = 1900$ MHz; $\sigma = 1.338$ S/m; $\epsilon_r = 41.44$; $\rho = 1000$ kg/m³
Phantom section: Flat Section

DASY5 Configuration:

- Probe: EX3DV4 - SN7522; ConvF(7.94, 7.94, 7.94) @ 1900 MHz;
- Sensor-Surface: 1.4mm (Mechanical Surface Detection)
- Electronics: DAE4 Sn1354; Calibrated: 2022/10/31
- Phantom: Twin SAM; Type: Twin SAM V5.0; Serial: TP:1470
- Measurement SW: DASY52, Version 52.10 (2); SEMCAD X Version 14.6.12 (7470)

Area Scan (5x6x1): Measurement grid: dx=15mm, dy=15mm
Maximum value of SAR (measured) = 6.21 W/kg

Zoom Scan (5x5x7)/Cube 0: Measurement grid: dx=8mm, dy=8mm, dz=5mm
Reference Value = 63.45 V/m; Power Drift = -0.18 dB
Peak SAR (extrapolated) = 7.33 W/kg
SAR(1 g) = 3.97 W/kg; SAR(10 g) = 2.21 W/kg
Maximum value of SAR (measured) = 6.15 W/kg



0 dB = 6.15 W/kg = 7.89 dBW/kg

System Performance 2300MHz**DUT: D2300V2; Type: 2300 MHz; Serial: 1135**

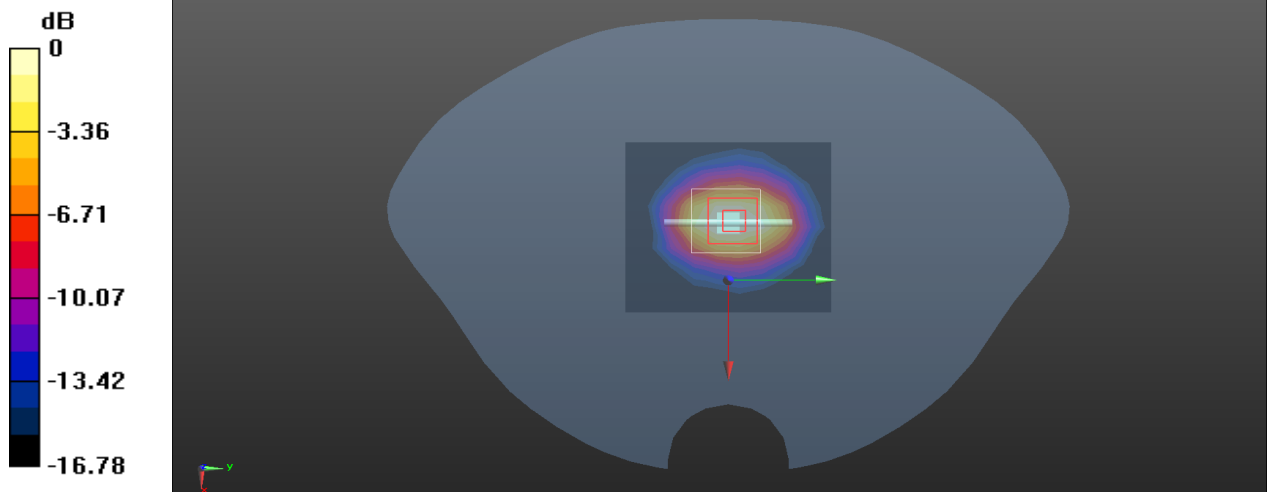
Communication System: CW; Frequency: 2300 MHz; Duty Cycle: 1:1
Medium parameters used: $f = 2300$ MHz; $\sigma = 1.629$ S/m; $\epsilon_r = 39.837$; $\rho = 1000$ kg/m³
Phantom section: Flat Section

DASY5 Configuration:

- Probe: EX3DV4 - SN7522; ConvF(7.67, 7.67, 7.67) @ 2300 MHz;
- Sensor-Surface: 1.4mm (Mechanical Surface Detection)
- Electronics: DAE4 Sn1354; Calibrated: 2022/10/31
- Phantom: Twin SAM; Type: Twin SAM V5.0; Serial: TP:1470
- Measurement SW: DASY52, Version 52.10 (2); SEMCAD X Version 14.6.12 (7470)

Area Scan (9x13x1): Measurement grid: dx=10 mm, dy=10 mm
Maximum value of SAR (measured) = 6.47 W/kg

Zoom Scan (7x7x7)/Cube 0: Measurement grid: dx=5mm, dy=5mm, dz=5mm
Reference Value = 46.66 V/m; Power Drift = 0.13 dB
Peak SAR (extrapolated) = 9.75 W/kg
SAR(1 g) = 4.64 W/kg; SAR(10 g) = 2.43 W/kg
Maximum value of SAR (measured) = 5.77 W/kg



System Performance 2450MHz**DUT: D2450V2; Type: 2450 MHz; Serial: 1102**

Communication System: CW; Frequency: 2450 MHz; Duty Cycle: 1:1

Medium parameters used: $f = 2450$ MHz; $\sigma = 1.869$ S/m; $\epsilon_r = 39.395$; $\rho = 1000$ kg/m³

Phantom section: Flat Section

DASY5 Configuration:

- Probe: EX3DV4 - SN7522; ConvF(7.42, 7.42, 7.42) @ 2450 MHz;
- Sensor-Surface: 1.4mm (Mechanical Surface Detection)
- Electronics: DAE4 Sn1354; Calibrated: 2022/10/31
- Phantom: Twin SAM; Type: Twin SAM V5.0; Serial: TP:1470
- Measurement SW: DASY52, Version 52.10 (2); SEMCAD X Version 14.6.12 (7470)

Area Scan (7x10x1): Measurement grid: dx=12mm, dy=12mm

Maximum value of SAR (measured) = 9.49 W/kg

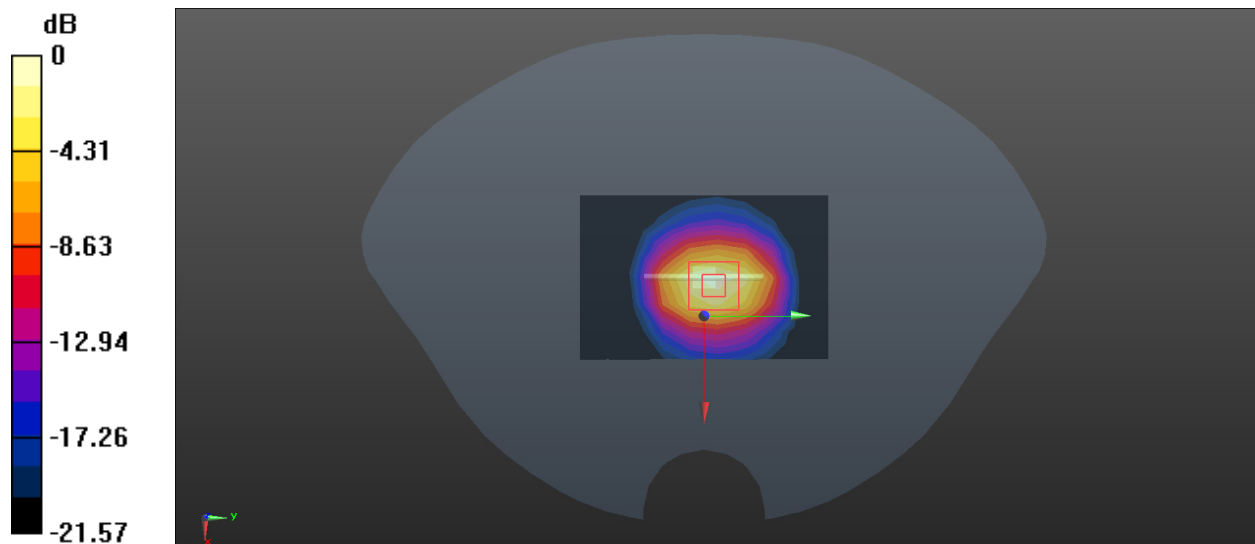
Zoom Scan (7x7x7)/Cube 0: Measurement grid: dx=5mm, dy=5mm, dz=5mm

Reference Value = 64.81 V/m; Power Drift = -0.09 dB

Peak SAR (extrapolated) = 10.4 W/kg

SAR(1 g) = 4.72 W/kg; SAR(10 g) = 2.58 W/kg

Maximum value of SAR (measured) = 8.63 W/kg



0 dB = 8.63 W/kg = 9.36 dBW/kg

System Performance 2600MHz**DUT: D2600V2; Type: 2600 MHz; Serial: 1206**

Communication System: CW; Frequency: 2600 MHz; Duty Cycle: 1:1

Medium parameters used: $f = 2600$ MHz; $\sigma = 1.995$ S/m; $\epsilon_r = 40.643$; $\rho = 1000$ kg/m³

Phantom section: Flat Section

DASY5 Configuration:

- Probe: EX3DV4 - SN7522; ConvF(7.23, 7.23, 7.23) @ 2600 MHz;
- Sensor-Surface: 1.4mm (Mechanical Surface Detection)
- Electronics: DAE4 Sn1354; Calibrated: 2022/10/31
- Phantom: Twin SAM; Type: Twin SAM V5.0; Serial: TP:1470
- Measurement SW: DASY52, Version 52.10 (2); SEMCAD X Version 14.6.12 (7470)

Area Scan (8x9x1): Measurement grid: dx=12mm, dy=12mm

Maximum value of SAR (measured) = 11.7 W/kg

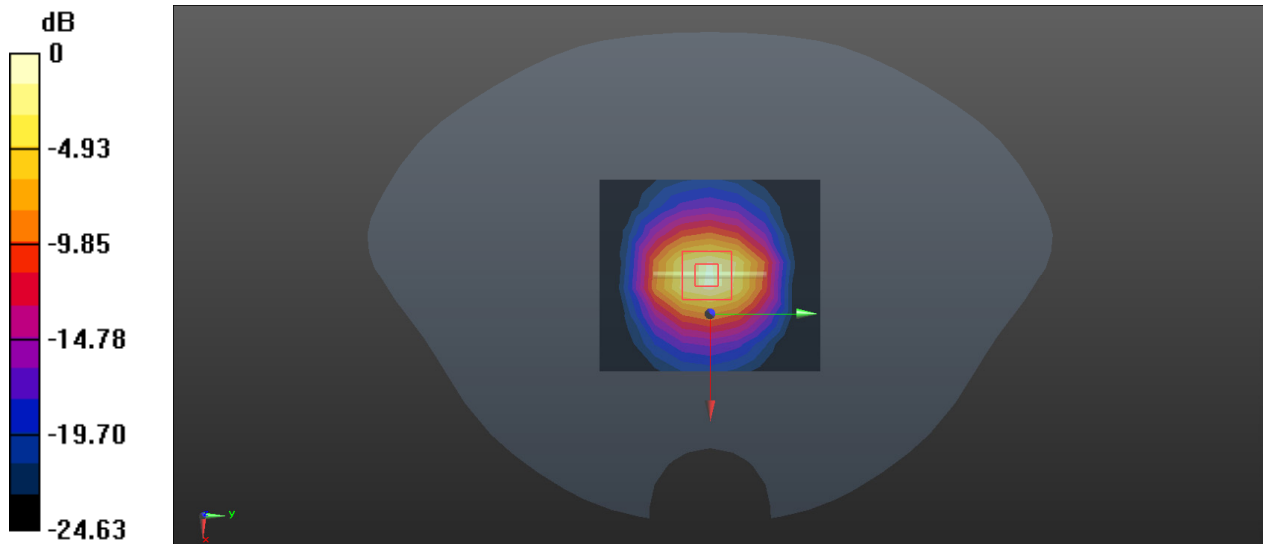
Zoom Scan (7x7x7)/Cube 0: Measurement grid: dx=5mm, dy=5mm, dz=5mm

Reference Value = 57.33 V/m; Power Drift = 0.19 dB

Peak SAR (extrapolated) = 12.1 W/kg

SAR(1 g) = 5.85 W/kg; SAR(10 g) = 2.61 W/kg

Maximum value of SAR (measured) = 9.78 W/kg



System Performance 5250 MHz**DUT: D5GHzV2; Type: 5250 MHz; Serial: 1246**

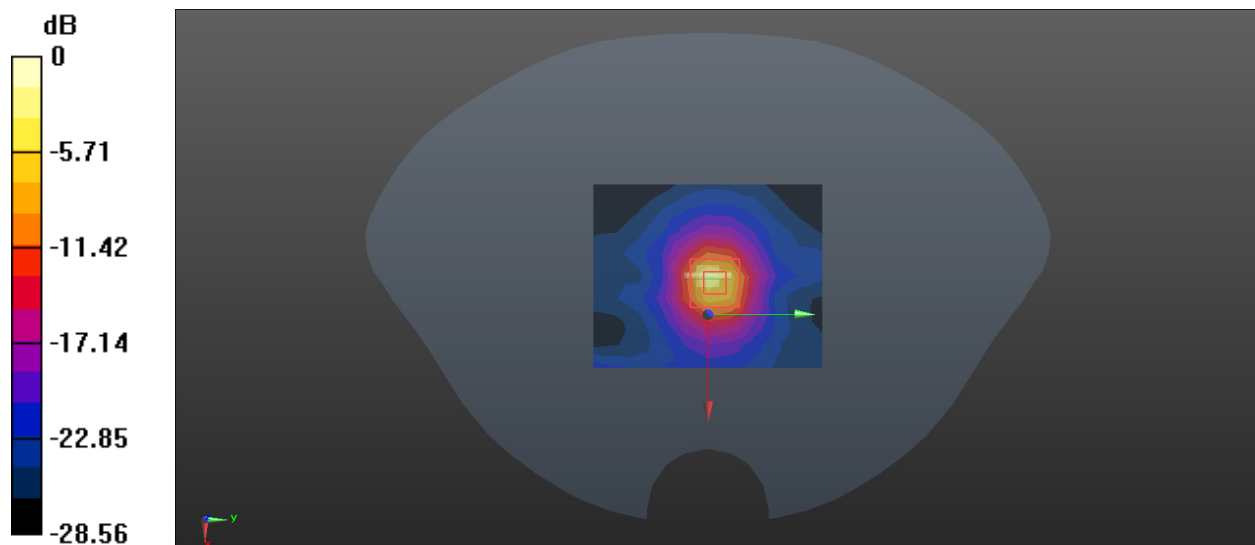
Communication System: CW; Frequency: 5250 MHz; Duty Cycle: 1:1
Medium parameters used: $f = 5250$ MHz; $\sigma = 4.603$ S/m; $\epsilon_r = 37.563$; $\rho = 1000$ kg/m³
Phantom section: Flat Section

DASY5 Configuration:

- Probe: EX3DV4 - SN7522; ConvF(5.36, 5.36, 5.36) @ 5250 MHz;
- Sensor-Surface: 1.4mm (Mechanical Surface Detection)
- Electronics: DAE4 Sn1354; Calibrated: 2022/10/31
- Phantom: Twin SAM; Type: Twin SAM V5.0; Serial: TP:1470
- Measurement SW: DASY52, Version 52.10 (2); SEMCAD X Version 14.6.12 (7470)

Area Scan (9x11x1): Measurement grid: dx=10mm, dy=10mm
Maximum value of SAR (measured) = 24.5 W/kg

Zoom Scan (7x7x16)/Cube 0: Measurement grid: dx=4mm, dy=4mm, dz=2mm
Reference Value = 48.53 V/m; Power Drift = -0.14 dB
Peak SAR (extrapolated) = 33.2 W/kg
SAR(1 g) = 7.84 W/kg; SAR(10 g) = 2.37 W/kg
Maximum value of SAR (measured) = 24.1 W/kg



System Performance 5600 MHz**DUT: D5GHzV2; Type: 5600 MHz; Serial: 1246**

Communication System: CW; Frequency: 5600 MHz; Duty Cycle: 1:1

Medium parameters used: $f = 5600$ MHz; $\sigma = 4.992$ S/m; $\epsilon_r = 35.664$; $\rho = 1000$ kg/m³

Phantom section: Flat Section

DASY5 Configuration:

- Probe: EX3DV4 - SN7522; ConvF(4.85, 4.85, 4.85) @ 5600 MHz;
- Sensor-Surface: 1.4mm (Mechanical Surface Detection)
- Electronics: DAE4 Sn1354; Calibrated: 2022/10/31
- Phantom: Twin SAM; Type: Twin SAM V5.0; Serial: TP:1470
- Measurement SW: DASY52, Version 52.10 (2); SEMCAD X Version 14.6.12 (7470)

Area Scan (8x8x1): Measurement grid: dx=10mm, dy=10mm

Maximum value of SAR (measured) = 25.4 W/kg

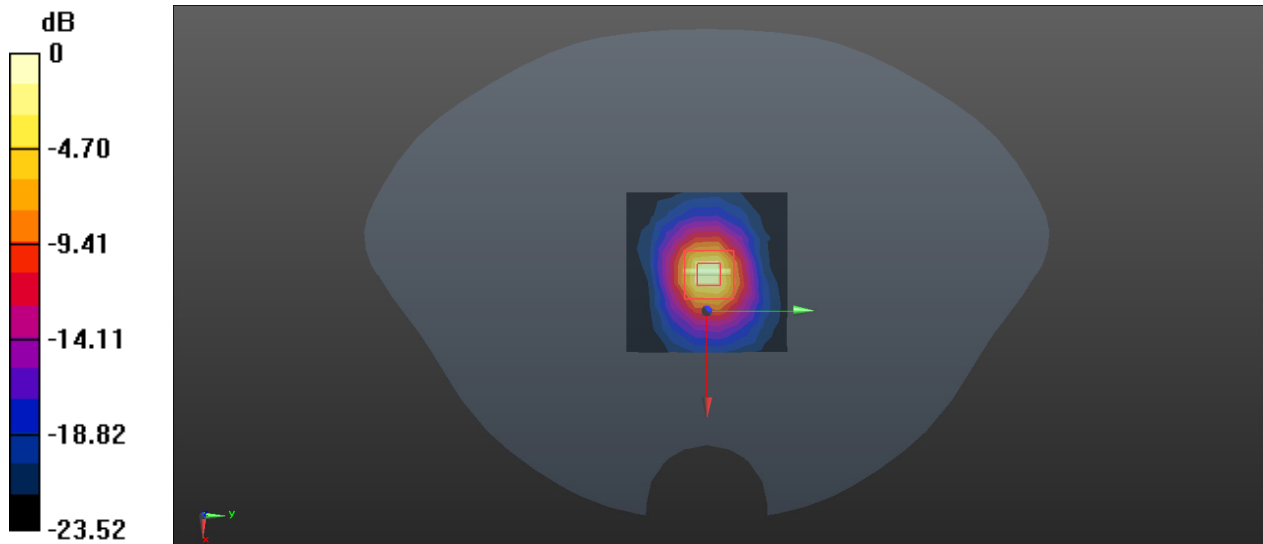
Zoom Scan (7x7x16)/Cube 0: Measurement grid: dx=4mm, dy=4mm, dz=2mm

Reference Value = 45.33 V/m; Power Drift = 0.16 dB

Peak SAR (extrapolated) = 33.5 W/kg

SAR(1 g) = 8.16 W/kg; SAR(10 g) = 2.42 W/kg

Maximum value of SAR (measured) = 23.9 W/kg



System Performance 5750 MHz**DUT: D5GHzV2; Type: 5750 MHz; Serial: 1246**

Communication System: CW; Frequency: 5750 MHz; Duty Cycle: 1:1

Medium parameters used: $f = 5750$ MHz; $\sigma = 5.298$ S/m; $\epsilon_r = 36.039$; $\rho = 1000$ kg/m³

Phantom section: Flat Section

DASY5 Configuration:

- Probe: EX3DV4 - SN7522; ConvF(4.9, 4.9, 4.9) @ 5750 MHz;
- Sensor-Surface: 1.4mm (Mechanical Surface Detection)
- Electronics: DAE4 Sn1354; Calibrated: 2022/10/31
- Phantom: Twin SAM; Type: Twin SAM V5.0; Serial: TP:1470
- Measurement SW: DASY52, Version 52.10 (2); SEMCAD X Version 14.6.12 (7470)

Area Scan (8x8x1): Measurement grid: dx=10mm, dy=10mm

Maximum value of SAR (measured) = 24.6 W/kg

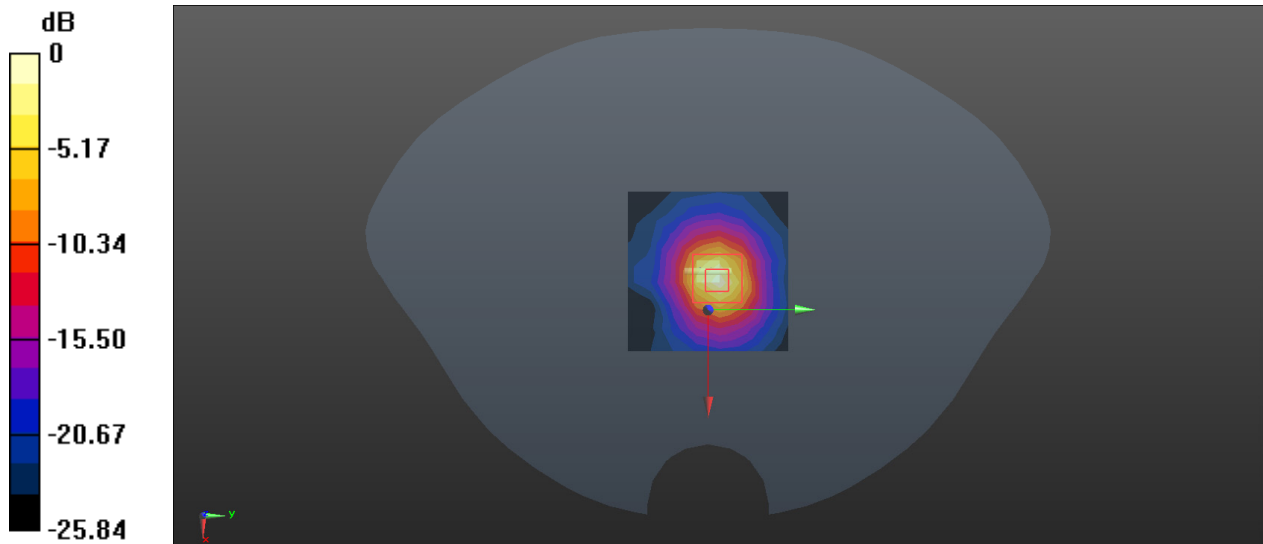
Zoom Scan (7x7x16)/Cube 0: Measurement grid: dx=4mm, dy=4mm, dz=2mm

Reference Value = 43.88 V/m; Power Drift = 0.04 dB

Peak SAR (extrapolated) = 32.3 W/kg

SAR(1 g) = 8.03 W/kg; SAR(10 g) = 2.32 W/kg

Maximum value of SAR (measured) = 24.2 W/kg



0 dB = 24.2 W/kg = 13.84 dBW/kg

5. EUT TEST STRATEGY AND METHODOLOGY

5.1 Test positions for body-worn and other configurations

Body-worn operating configurations should be tested with the belt-clips and holsters attached to the device and positioned against a flat phantom in normal use configurations. Devices with a headset output should be tested with a headset connected to the device. When multiple accessories that do not contain metallic components are supplied with the device, the device may be tested with only the accessory that dictates the closest spacing to the body. When multiple accessories that contain metallic components are supplied with the device, the device must be tested with each accessory that contains a unique metallic component. If multiple accessories share an identical metallic component (e.g., the same metallic belt-clip used with different holsters with no other metallic components), only the accessory that dictates the closest spacing to the body must be tested.

Body-worn accessories may not always be supplied or available as options for some devices that are intended to be authorized for body-worn use. A separation distance of 1.5 cm between the back of the device and a flat phantom is recommended for testing body-worn SAR compliance under such circumstances. Other separation distances may be used, but they should not exceed 2.5 cm. In these cases, the device may use body-worn accessories that provide a separation distance greater than that tested for the device provided however that the accessory contains no metallic components.

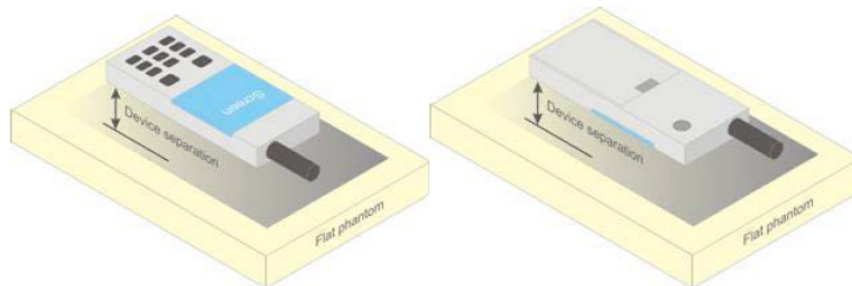


Figure 5 – Test positions for body-worn devices

5.2 Test Distance for SAR Evaluation

For Handheld mode(10g Extremity SAR) the EUT(Equipment Under Test) is set directly against the phantom, the test distance is 0mm;

For Body Supported mode(1g Body SAR) the EUT is set 5mm away from the phantom, the test distance is 5mm

5.3 SAR Evaluation Procedure

The evaluation was performed with the following procedure:

Step 1: Measurement of the SAR value at a fixed location above the ear point or central position was used as a reference value for assessing the power drop. The SAR at this point is measured at the start of the test and then again at the end of the testing.

Step 2: The SAR distribution at the exposed side of the head was measured at a distance of 4 mm from the inner surface of the shell. The area covered the entire dimension of the head or radiating structures of the EUT, the horizontal grid spacing was 15 mm x 15 mm, and the SAR distribution was determined by integrated grid of 1.5mm x 1.5mm. Based on these data, the area of the maximum absorption was determined by spline interpolation. The first Area Scan covers the entire dimension of the EUT to ensure that the hotspot was correctly identified.

Step 3: Around this point, a volume of 30 mm x 30 mm x 30 mm was assessed by measuring 7x 7 x 7 points. On the basis of this data set, the spatial peak SAR value was evaluated under the following procedure:

- 1) The data at the surface were extrapolated, since the center of the dipoles is 1.2 mm away from the tip of the probe and the distance between the surface and the lowest measuring point is 1.3 mm. The extrapolation was based on a least square algorithm. A polynomial of the fourth order was calculated through the points in z-axes. This polynomial was then used to evaluate the points between the surface and the probe tip.

- 2) The maximum interpolated value was searched with a straightforward algorithm. Around this maximum the SAR values averaged over the spatial volumes (1 g or 10 g) were computed by the 3D-Spline interpolation algorithm. The 3D-Spline is composed of three one dimensional splines with the "Not a knot"-condition (in x, y and z-directions). The volume was integrated with the trapezoidal-algorithm. One thousand points (10 x 10 x 10) were interpolated to calculate the averages.

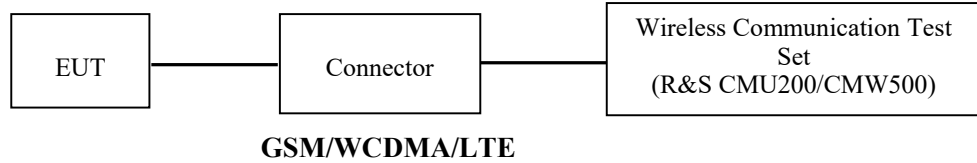
All neighboring volumes were evaluated until no neighboring volume with a higher average value was found.

Step 4: Re-measurement of the SAR value at the same location as in Step 1. If the value changed by more than 5%, the evaluation was repeated.

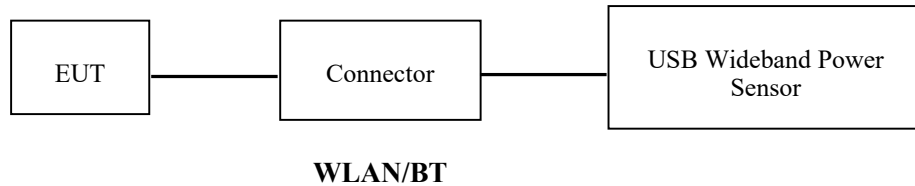
6. CONDUCTED OUTPUT POWER MEASUREMENT

6.1 Test Procedure

The RF output of the transmitter was connected to the input of the Wireless Communication Test Set through Connector.



The RF output of the transmitter was connected to the input port of the USB Wideband Power Sensor through Connector.



6.2 Description of Test Configuration

EUT Operation Condition:

EUT Operation Mode:	The system was configured for testing in each operation mode.
Equipment Modifications:	No
EUT Exercise Software:	No
The maximum power was configured per 3GPP Standard for each operation modes as below setting:	
GPRS/EGPRS	
Function: Menu select > GSM Mobile Station > GSM 850/1900	
Press Connection control to choose the different menus	
Press RESET > choose all the reset all settings	
Connection Press Signal Off to turn off the signal and change settings	
Network Support > GPRS or EGSM	
Main Service > Packet Data	
Service selection > Test Mode A – Auto Slot Config. off	
MS Signal Press Slot Config Bottom on the right twice to select and change the number of time slots and power setting	
<ul style="list-style-type: none"> > Slot configuration > Uplink/Gamma > 33 dBm for GPRS 850 > 30 dBm for GPRS 1900 > 27 dBm for EGPRS 850 > 26 dBm for EGPRS 1900 	
BS Signal Enter the same channel number for TCH channel (test channel) and BCCH channel	
Frequency Offset > + 0 Hz	
Mode > BCCH and TCH	
BCCH Level > -85 dBm (May need to adjust if link is not stable)	
BCCH Channel > choose desire test channel [Enter the same channel number for TCH channel (test channel) and BCCH channel]	
Channel Type > Off	
P0 > 4 dB	
Slot Config > Unchanged (if already set under MS signal)	
TCH > choose desired test channel	
Hopping > Off	
Main Timeslot > 3	
Network Coding Scheme > CS4 (GPRS) and MCS5 (EGPRS)	
Bit Stream > 2E9-1 PSR Bit Stream	
AF/RF Enter appropriate offsets for Ext. Att. Output and Ext. Att. Input	
Connection Press Signal on to turn on the signal and change settings	

WCDMA-Release 99

The following tests were conducted according to the test requirements outlines in section 5.2 of the 3GPP TS34.121-1 specification. The EUT has a nominal maximum output power of 24dBm (+1.7/-3.7).

WCDMA General Settings	Loopback Mode	Test Mode 1
	Rel99 RMC	12.2kbps RMC
	Power Control Algorithm	Algorithm2
	β_c / β_d	8/15

WCDMA HSDPA

The following tests were conducted according to the test requirements outlines in section 5.2 of the 3GPP TS34.121-1 specification.

	Mode	HSDPA	HSDPA	HSDPA	HSDPA
	Subset	1	2	3	4
WCDMA General Settings	Loopback Mode	Test Mode 1			
	Rel99 RMC	12.2kbps RMC			
	HSDPA FRC	H-Set1			
	Power Control Algorithm	Algorithm2			
	β_c	2/15	12/15	15/15	15/15
	β_d	1 /15	15/15	8/15	4/15
	β_d (SF)	64			
	β_c / β_d	2/15	12/15	15/8	15/4
	β_{hs}	4/15	24/15	30/15	30/15
	MPR(dB)	0	0	0.5	0.5
HSDPA Specific Settings	DACK	8			
	DNAK	8			
	DCQI	8			
	Ack-Nack repetition factor	3			
	CQI Feedback	4ms			
	CQI Repetition Factor	2			
	$A_{hs} = \beta_{hs} / \beta_c$	30/15			

WCDMA HSUPA

The following tests were conducted according to the test requirements outlines in section 5.2 of the 3GPP TS34.121-1 specification.

	Mode	HSUPA	HSUPA	HSUPA	HSUPA	HSUPA
	Subset	1	2		4	5
WCDMA General Settings	Loopback Mode	Test Mode 1				
	Rel99 RMC	12.2kbps RMC				
	HSDPA FRC	H-Set1				
	HSUPA Test	HSUPA Loopback				
	Power Control Algorithm	Algorithm2				
	β_c	11/15	6/15	15/15	2/15	15/15
	β_d	15/15	15/15	9/15	15/15	0
	β_{ec}	209/225	12/15	30 15	2/15	5/15
	β_c/β_d	11/15	6/15	15/9	2/15	-
	β_{hs}	22/15	12/15	30/15	4/15	5/15
	CM(dB)	1.0	3.0	2.0	3.0	1.0
MPR(dB)	0	2	1	2	0	
HSDPA Specific Settings	DACK	8				
	DNAK	8				
	DCQI	8				
	Ack-Nack repetition factor	3				
	CQI Feedback	4ms				
	CQI Repetition Factor	2				
	$A_{hs}=\beta_{hs}/\beta_c$	30/15				
HSUPA Specific Settings	DE-DPCCH	6	8	8	5	7
	DHARQ	0	0	0	0	0
	AG Index	20	12	15	17	21
	ETFCI	75	67	92	71	81
	Associated Max UL Data Rate k ps	242.1	174.9	482.8	205.8	308.9
	Reference E_FCI	E-TFCI 11 E E-TFCI PO 4 E-TFCI 67 E-TFCI PO 18 E-TFCI 71 E-TFCI PO23 E-TFCI 75 E-TFCI PO26 E-TFCI 81 E-TFCI PO 27	E-TFCI 11 E-TFCI PO4 E-TFCI 92 E-TFCI PO 18	E-TFCI 11 E-TFCI PO 4 E-TFCI 67 E-TFCI PO 18 E-TFCI 71 E-TFCI PO23 E-TFCI 75 E-TFCI PO26 E-TFCI 81 E-TFCI PO 27	E-TFCI 11 E E-TFCI PO 4 E-TFCI 67 E-TFCI PO 18 E-TFCI 71 E-TFCI PO23 E-TFCI 75 E-TFCI PO26 E-TFCI 81 E-TFCI PO 27	

HSPA+

The following tests were conducted according to the test requirements in Table C.11.1.4 of 3GPP TS 34.121-1

Sub-test	β_c (Note3)	β_d	β_{HS} (Note1)	β_{ec}	β_{ed} (2xSF2) (Note 4)	β_{ed} (2xSF4) (Note 4)	CM (dB) (Note 2)	MPR (dB) (Note 2)	AG Index (Note 4)	E-TFCI (Note 5)	E-TFCI (boost)
1	1	0	30/15	30/15	β_{ed1} : 30/15 β_{ed2} : 30/15	β_{ed3} : 24/15 β_{ed4} : 24/15	3.5	2.5	14	105	105

Note 1: Δ_{ACK} , Δ_{NACK} and $\Delta_{CQI} = 30/15$ with $\beta_{HS} = 30/15 * \beta_c$.

Note 2: CM = 3.5 and the MPR is based on the relative CM difference, MPR = MAX(CM-1,0).

Note 3: DPDCH is not configured, therefore the β_c is set to 1 and $\beta_d = 0$ by default.

Note 4: β_{ed} can not be set directly; it is set by Absolute Grant Value.

Note 5: All the sub-tests require the UE to transmit 2SF2+2SF4 16QAM EDCH and they apply for UE using E-DPDCH category 7. E-DCH TTI is set to 2ms TTI and E-DCH table index = 2. To support these E-DCH configurations DPDCH is not allocated. The UE is signalled to use the extrapolation algorithm.

DC-HSDPA

The following tests were conducted according to the test requirements in Table C.8.1.12 of 3GPP TS 34.121-1

Table C.8.1.12: Fixed Reference Channel H-Set 12

Parameter	Unit	Value
Nominal Avg. Inf. Bit Rate	kbps	60
Inter-TTI Distance	TTI's	1
Number of HARQ Processes	Processes	6
Information Bit Payload (N_{INF})	Bits	120
Number Code Blocks	Blocks	1
Binary Channel Bits Per TTI	Bits	960
Total Available SML's in UE	SML's	19200
Number of SML's per HARQ Proc.	SML's	3200
Coding Rate		0.15
Number of Physical Channel Codes	Codes	1
Modulation		QPSK
Note 1: The RMC is intended to be used for DC-HSDPA mode and both cells shall transmit with identical parameters as listed in the table.		
Note 2: Maximum number of transmission is limited to 1, i.e., retransmission is not allowed. The redundancy and constellation version 0 shall be used.		

LTE (FDD):

The following tests were conducted according to the test requirements in 3GPP TS36.101

The following tests were conducted according to the test requirements outlined in section 6.2 of the 3GPP TS36.101 specification.

UE Power Class: 3 (23 +/- 2dBm). The allowed Maximum Power Reduction (MPR) for the maximum output power due to higher order modulation and transmit bandwidth configuration (resource blocks) is specified in Table 6.2.3-1 of the 3GPP TS36.101.

Table 6.2.3-1: Maximum Power Reduction (MPR) for Power Class 3

Modulation	Channel bandwidth / Transmission bandwidth (RB)						MPR (dB)
	1.4 MHz	3.0 MHz	5 MHz	10 MHz	15 MHz	20 MHz	
QPSK	> 5	> 4	> 8	> 12	> 16	> 18	≤ 1
16 QAM	≤ 5	≤ 4	≤ 8	≤ 12	≤ 16	≤ 18	≤ 1
64 QAM	> 5	> 4	> 8	> 12	> 16	> 18	≤ 2

The allowed A-MPR values specified below in Table 6.2.4.-1 of 3GPP TS36.101 are in addition to the allowed MPR requirements. All the measurements below were performed with A-MPR disabled, by using Network Signalling Value of "NS_01".

Table 6.2.4-1: Additional Maximum Power Reduction (A-MPR)

Network Signalling value	Requirements (sub-clause)	E-UTRA Band	Channel bandwidth (MHz)	Resources Blocks (N_{RB})	A-MPR (dB)
NS_01	6.6.2.1.1	Table 5.5-1	1.4, 3, 5, 10, 15, 20	Table 5.6-1	NA
NS_03	6.6.2.2.1	2, 4, 10, 23, 25, 35, 36	3	>5	≤ 1
			5	>6	≤ 1
			10	>6	≤ 1
			15	>8	≤ 1
			20	>10	≤ 1
NS_04	6.6.2.2.2	41	5	>6	≤ 1
			10, 15, 20	See Table 6.2.4-4	
NS_05	6.6.3.3.1	1	10,15,20	≥ 50	≤ 1
NS_06	6.6.2.2.3	12, 13, 14, 17	1.4, 3, 5, 10	Table 5.6-1	n/a
NS_07	6.6.2.2.3	13	10	Table 6.2.4-2	Table 6.2.4-2
	6.6.3.3.2				
NS_08	6.6.3.3.3	19	10, 15	> 44	≤ 3
NS_09	6.6.3.3.4	21	10, 15	> 40	≤ 1
				> 55	≤ 2
NS_10		20	15, 20	Table 6.2.4-3	Table 6.2.4-3
NS_11	6.6.2.2.1	23 ¹	1.4, 3, 5, 10	Table 6.2.4-5	Table 6.2.4-5
..					
NS_32	-	-	-	-	-

Note 1: Applies to the lower block of Band 23, i.e. a carrier placed in the 2000-2010 MHz region.

TDD-LTE

P TS 36.211 section 4.2 for Type 2 Frame Structure and Table 4.2-2 for uplink-downlink configurations and Table 4.2-1 for Special subframe configurations.

Table 4.2-1: Configuration of special subframe (lengths of DwPTS/GP/UpPTS).

Special subframe configuration	Normal cyclic prefix in downlink				Extended cyclic prefix in downlink		
	DwPTS	UpPTS		DwPTS	UpPTS		
		Normal cyclic prefix in uplink	Extended cyclic prefix in uplink		Normal cyclic prefix in uplink	Extended cyclic prefix in uplink	
0	$6592 \cdot T_s$	$2192 \cdot T_s$	$2560 \cdot T_s$	$7680 \cdot T_s$	$2192 \cdot T_s$	$2560 \cdot T_s$	
1	$19760 \cdot T_s$			$20480 \cdot T_s$			
2	$21952 \cdot T_s$			$23040 \cdot T_s$			
3	$24144 \cdot T_s$			$25600 \cdot T_s$			
4	$26336 \cdot T_s$	$4384 \cdot T_s$	$5120 \cdot T_s$	$7680 \cdot T_s$	$4384 \cdot T_s$	$5120 \cdot T_s$	
5	$6592 \cdot T_s$			$20480 \cdot T_s$			
6	$19760 \cdot T_s$			$23040 \cdot T_s$			
7	$21952 \cdot T_s$			$12800 \cdot T_s$			
8	$24144 \cdot T_s$			-	-	-	
9	$13168 \cdot T_s$			-	-	-	

Table 4.2-2: Uplink-downlink configurations.

Uplink-downlink configuration	Downlink-to-Uplink Switch-point periodicity	Subframe number									
		0	1	2	3	4	5	6	7	8	9
0	5 ms	D	S	U	U	U	D	S	U	U	U
1	5 ms	D	S	U	U	D	D	S	U	U	D
2	5 ms	D	S	U	D	D	D	S	U	D	D
3	10 ms	D	S	U	U	U	D	D	D	D	D
4	10 ms	D	S	U	U	D	D	D	D	D	D
5	10 ms	D	S	U	D	D	D	D	D	D	D
6	5 ms	D	S	U	U	U	D	S	U	U	D

Calculated Duty Cycle

Uplink-Downlink Configuration	Downlink-to-Uplink Switch-point Periodicity	Subframe Number										Calculated Duty Cycle (%)
		0	1	2	3	4	5	6	7	8	9	
0	5 ms	D	S	U	U	U	D	S	U	U	U	63.33
1	5 ms	D	S	U	U	D	D	S	U	U	D	43.33
2	5 ms	D	S	U	D	D	D	S	U	D	D	23.33
3	10 ms	D	S	U	U	U	D	D	D	D	D	31.67
4	10 ms	D	S	U	U	D	D	D	D	D	D	21.67
5	10 ms	D	S	U	D	D	D	D	D	D	D	11.67
6	5 ms	D	S	U	U	U	D	S	U	U	D	53.33

We used configuration 0 for LTE Band 38&41 SAR test, that is 63.33%(1:1.58)for duty cycle.

6.3 Maximum Target Output Power

Max Target Power(dBm)			
Mode/Band	Channel		
	Low	Middle	High
GSM 850 GPRS 1 TX Slot	32.1	32.1	32.1
GSM 850 GPRS 2 TX Slot	31.4	31.4	31.4
GSM 850 GPRS 3 TX Slot	29.7	29.7	29.7
GSM 850 GPRS 4 TX Slot	28.5	28.5	28.5
GSM 850 EDGE 1 TX Slot	28.0	28.0	28.0
GSM 850 EDGE 2 TX Slot	26.6	26.6	26.6
GSM 850 EDGE 3 TX Slot	24.2	24.2	24.2
GSM 850 EDGE 4 TX Slot	23.0	23.0	23.0
GSM 1900 GPRS 1 TX Slot	29.1	28.5	28.0
GSM 1900 GPRS 2 TX Slot	28.3	27.6	27.0
GSM 1900 GPRS 3 TX Slot	26.3	25.5	25.0
GSM 1900 GPRS 4 TX Slot	25.2	24.5	24.0
GSM 1900 EDGE 1 TX Slot	25.5	25.5	25.5
GSM 1900 EDGE 2 TX Slot	24.5	24.5	24.5
GSM 1900 EDGE 3 TX Slot	22.1	22.1	22.1
GSM 1900 EDGE 4 TX Slot	21.0	21.0	21.0
WCDMA Band 2	23.0	23.0	23.0
HSDPA	20.5	20.5	20.5
HSUPA	20.2	20.2	20.2
HSPA+	20.2	20.2	20.2
WCDMA Band 4	23.2	23.2	23.2
HSDPA	20.8	20.8	20.8
HSUPA	20.8	20.8	20.8
HSPA+	20.8	20.8	20.8
WCDMA Band 5	23.5	23.5	23.5
HSDPA	21.0	21.0	21.0
HSUPA	20.3	20.3	20.3
HSPA+	20.3	20.3	20.3
LTE Band 2	22.1	22.1	22.1
LTE Band 4	22.7	22.7	22.7
LTE Band 5	23.5	23.5	23.5
LTE Band 7	22.3	22.3	22.3
LTE Band 40 Lower	23.0	23.0	23.0
LTE Band 40 Upper	23.2	23.2	23.2
LTE Band 38	23.0	23.0	23.0
LTE Band 41	23.0	23.0	23.0

Max Target Power(dBm)			
Mode/Band	Channel		
	Low	Middle	High
WLAN 2.4G(802.11b)	15.5	15.5	15.5
WLAN 2.4G(802.11g)	12.2	12.2	12.2
WLAN 2.4G(802.11n ht20)	12.0	12.0	12.0
WLAN 2.4G(802.11n ht40)	12.0	12.0	12.0
WLAN 5.2G(802.11a)	10.1	10.1	10.1
WLAN 5.2G(802.11ac vht20)	10.0	10.0	10.0
WLAN 5.2G(802.11ac vht40)	9.6	/	9.6
WLAN 5.2G(802.11ac vht80)	/	9.7	/
WLAN 5.3G(802.11a)	9.6	9.6	9.6
WLAN 5.3G(802.11ac vht20)	9.6	9.6	9.6
WLAN 5.3G(802.11ac vht40)	9.4	/	9.4
WLAN 5.3G(802.11ac vht80)	/	9.4	/
WLAN 5.6G(802.11a)	12.2	12.2	12.2
WLAN 5.6G(802.11ac vht20)	11.5	11.5	11.5
WLAN 5.6G(802.11ac vht40)	11.5	11.5	11.5
WLAN 5.6G(802.11ac vht80)	10.4	11.2	11.2
WLAN 5.8G(802.11a)	12.3	12.3	12.3
WLAN 5.8G(802.11ac vht20)	12.3	12.3	12.3
WLAN 5.8G(802.11ac vht40)	12.0	/	12.0
WLAN 5.8G(802.11ac vht80)	/	12.0	/
Bluetooth BDR/EDR	6.0	6.0	6.0
BLE 1M	7.0	7.5	5.6
BLE 2M	7.5	7.1	6.2

6.4 Test Results:**GPRS:**

Band	Channel No.	Frequency (MHz)	RF Output Power (dBm)			
			1 slot	2 slots	3 slots	4 slots
GSM 850	128	824.2	31.87	31.11	29.31	28.22
	190	836.6	32.01	31.32	29.55	28.47
	251	848.8	32.02	31.12	29.51	28.38
PCS 1900	512	1850.2	29.03	28.20	26.13	25.15
	661	1880	28.37	27.45	25.44	24.40
	810	1909.8	27.91	26.82	24.79	23.74

EDGE:

Band	Channel No.	Frequency (MHz)	RF Output Power (dBm)			
			1 slot	2 slots	3 slots	4 slots
GSM 850	128	824.2	27.47	26.25	23.67	22.39
	190	836.6	27.73	26.39	24.04	22.60
	251	848.8	27.83	26.48	24.09	22.87
PCS 1900	512	1850.2	25.22	24.09	21.84	20.53
	661	1880	25.51	24.23	22.01	20.67
	810	1909.8	25.43	24.04	21.75	20.68

For SAR, the time based average power is relevant, the difference in between depends on the duty cycle of the TDMA signal.

Number of Time slot	1	2	3	4
Duty Cycle	1:8	1:4	1:2.66	1:2
Time based Ave. power compared to slotted Ave. power	-9 dB	-6 dB	-4.25 dB	-3 dB
Crest Factor	8	4	2.66	2

The time based average power for GPRS

Band	Channel No.	Frequency (MHz)	Time based average Power (dBm)			
			1 slot	2 slot	3 slots	4 slots
GSM 850	128	824.2	22.87	25.11	25.06	25.22
	190	836.6	23.01	25.32	25.30	25.47
	251	848.8	23.02	25.12	25.26	25.38
PCS 1900	512	1850.2	20.03	22.20	21.88	22.15
	661	1880	19.37	21.45	21.19	21.40
	810	1909.8	18.91	20.82	20.54	20.74

The time based average power for EDGE

Band	Channel No.	Frequency (MHz)	Time based average Power (dBm)			
			1 slot	2 slot	3 slots	4 slots
GSM 850	128	824.2	18.47	20.25	19.42	19.39
	190	836.6	18.73	20.39	19.79	19.60
	251	848.8	18.83	20.48	19.84	19.87
PCS 1900	512	1850.2	16.22	18.09	17.59	17.53
	661	1880	16.51	18.23	17.76	17.67
	810	1909.8	16.43	18.04	17.50	17.68

Note:

1. Rohde & Schwarz Radio Communication Tester (CMU200) was used for the measurement of GSM peak and average output power for active timeslots.
2. For GPRS, 1, 2, 3 and 4 timeslots has been activated separately with power level 3(850 MHz band) and 3(1900 MHz band).
3. When the maximum output power and tune-up tolerance specified for production units in a secondary mode is $\leq \frac{1}{4}$ dB higher than the primary mode or when the highest *reported* SAR of the primary mode is scaled by the ratio of specified maximum output power and tune-up tolerance of secondary to primary mode and the adjusted SAR is ≤ 1.2 W/kg, SAR measurement is not required for the secondary mode.

WCDMA:
Results (12.2kbps RMC)

Band	Frequency (MHz)	RF Output Power (dBm)
WCDMA Band 2	1852.4	22.79
	1880	22.70
	1907.6	22.81
WCDMA Band 4	1712.4	23.10
	1732.6	23.08
	1752.6	22.97
WCDMA Band 5	826.4	23.30
	836.6	23.39
	846.6	23.32

Results (HSDPA)

Band	Frequency (MHz)	RF Output Power (dBm)			
		Subset 1	Subset 2	Subset 3	Subset 4
WCDMA Band 2	1852.4	20.06	20.10	20.11	20.15
	1880	19.93	19.90	20.06	20.10
	1907.6	20.27	20.25	20.25	20.42
WCDMA Band 4	1712.4	20.56	20.61	20.67	20.68
	1732.6	20.37	20.50	20.51	20.51
	1752.6	20.50	20.49	20.49	20.59
WCDMA Band 5	826.4	20.62	20.71	20.67	20.84
	836.6	20.51	20.56	20.70	20.84
	846.6	20.58	20.65	20.80	20.81

Results (HSUPA)

Band	Frequency (MHz)	RF Output Power (dBm)				
		Subset 1	Subset 2	Subset 3	Subset 4	Subset 5
WCDMA Band 2	1852.4	19.72	19.77	19.79	19.94	19.92
	1880	19.92	20.07	20.11	20.11	20.18
	1907.6	19.74	19.70	19.81	19.79	19.88
WCDMA Band 4	1712.4	20.45	20.43	20.55	20.50	20.68
	1732.6	20.16	20.15	20.31	20.24	20.33
	1752.6	20.21	20.20	20.15	20.33	20.23
WCDMA Band 5	826.4	19.66	19.86	19.84	19.87	19.94
	836.6	20.02	20.07	20.13	20.20	20.11
	846.6	19.70	19.81	19.88	19.99	20.02

Results (HSPA+)

Band	Frequency (MHz)	RF Output Power (dBm)
WCDMA Band 2	1852.4	19.92
	1880	20.18
	1907.6	20.08
WCDMA Band 4	1712.4	20.77
	1732.6	20.42
	1752.6	20.37
WCDMA Band 5	826.4	20.07
	836.6	20.27
	846.6	20.02

Note:

1. The default test configuration is to measure SAR with an established radio link between the EUT and a communication test set using a 12.2 kbps RMC (reference measurement Channel) Configured in Test Loop Model 1.
2. KDB 941225 D01-Body SAR is not required for HSDPA/HSUPA/HSPA+ when the maximum average output of each RF channel is less than ¼ dB higher than measured 12.2kbps RMC or the maximum SAR for 12.2kbps RMC is < 75% of SAR limit.

LTE Band 2:

Test Bandwidth	Test Modulation	Resource Block & RB offset	Target MPR	Meas MPR	Low Channel (dBm)	Middle Channel (dBm)	High Channel (dBm)
1.4M	QPSK	RB1#0	0	0	21.81	21.75	21.86
		RB1#3	0	0	21.97	21.97	21.90
		RB1#5	0	0	21.79	21.86	21.75
		RB3#0	1	1	21.90	21.99	21.89
		RB3#3	1	1	21.95	21.91	21.88
		RB6#0	1	1	20.95	20.93	20.90
	16-QAM	RB1#0	1	1	20.89	21.01	20.81
		RB1#3	1	1	20.94	21.11	20.98
		RB1#5	2	2	20.86	20.88	20.87
		RB3#0	2	2	21.06	20.81	21.01
		RB3#3	2	2	21.07	20.82	20.94
		RB6#0	2	2	19.93	20.03	19.83
3M	QPSK	RB1#0	0	0	21.87	21.92	21.74
		RB1#8	0	0	21.81	21.93	21.67
		RB1#14	0	0	21.95	21.79	21.71
		RB6#0	1	1	20.89	20.84	20.74
		RB6#9	1	1	20.74	20.74	20.69
		RB15#0	1	1	20.95	20.89	20.85
	16-QAM	RB1#0	1	1	21.11	20.89	21.31
		RB1#8	1	1	20.99	20.86	21.35
		RB1#14	1	1	21.07	20.83	21.23
		RB6#0	2	2	19.90	19.79	19.79
		RB6#9	2	2	19.80	19.74	19.84
		RB15#0	2	2	19.77	19.87	19.93
5M	QPSK	RB1#0	0	0	21.80	21.81	21.70
		RB1#13	0	0	21.95	21.79	21.86
		RB1#24	0	0	21.86	21.71	21.62
		RB15#0	1	1	20.91	20.92	20.90
		RB15#10	1	1	20.83	20.75	20.69
		RB25#0	1	1	20.81	20.87	20.76
	16-QAM	RB1#0	1	1	21.05	20.72	20.54
		RB1#13	1	1	21.23	20.87	20.67
		RB1#24	1	1	21.09	20.79	20.53
		RB15#0	2	2	19.81	19.89	19.86
		RB15#10	2	2	19.81	19.77	19.81
		RB25#0	2	2	19.85	19.85	19.73

Test Bandwidth	Test Modulation	Resource Block & RB offset	Target MPR	Meas MPR	Low Channel (dBm)	Middle Channel (dBm)	High Channel (dBm)
10M	QPSK	RB1#0	0	0	21.84	21.77	21.73
		RB1#25	0	0	21.93	21.99	21.85
		RB1#49	1	1	21.73	21.81	21.68
		RB25#0	1	1	20.89	20.83	20.98
		RB25#25	1	1	20.90	20.71	20.64
		RB50#0	1	1	20.87	20.86	20.84
	16-QAM	RB1#0	1	1	20.92	20.72	21.22
		RB1#25	1	1	21.10	20.91	21.19
		RB1#49	1	1	20.99	20.85	20.96
		RB25#0	2	2	19.98	19.97	19.99
		RB25#25	2	2	19.98	19.82	19.73
		RB50#0	2	2	19.84	19.89	19.71
15M	QPSK	RB1#0	0	0	21.67	21.82	21.48
		RB1#38	0	0	21.79	21.81	21.35
		RB1#74	1	1	21.87	21.38	21.20
		RB36#0	1	1	20.90	20.63	20.40
		RB36#39	1	1	20.94	20.63	20.23
		RB75#0	1	1	20.90	20.65	20.22
	16-QAM	RB1#0	1	1	21.30	20.67	20.71
		RB1#38	1	1	21.43	20.80	20.63
		RB1#74	2	2	21.22	20.50	20.57
		RB36#0	2	2	19.94	19.50	19.26
		RB36#39	2	2	19.89	19.33	19.13
		RB75#0	2	2	19.92	19.53	19.32
20M	QPSK	RB1#0	0	0	21.47	21.17	21.20
		RB1#50	0	0	21.80	21.51	21.39
		RB1#99	0	0	21.45	20.99	21.11
		RB50#0	1	1	20.81	20.42	20.21
		RB50#50	1	1	21.01	21.08	21.01
		RB100#0	1	1	20.88	20.32	20.30
	16-QAM	RB1#0	1	1	20.67	20.32	20.29
		RB1#50	1	1	21.22	20.80	20.58
		RB1#99	2	2	20.62	20.42	20.21
		RB50#0	2	2	19.76	19.34	19.26
		RB50#50	2	2	19.64	19.24	19.13
		RB100#0	2	2	19.60	19.46	19.26

LTE Band 4:

Test Bandwidth	Test Modulation	Resource Block & RB offset	Target MPR	Meas MPR	Low Channel (dBm)	Middle Channel (dBm)	High Channel (dBm)
1.4M	QPSK	RB1#0	0	0	21.22	21.16	21.24
		RB1#3	0	0	21.46	21.54	21.35
		RB1#5	0	0	21.20	21.22	21.21
		RB3#0	1	1	21.35	21.21	21.38
		RB3#3	1	1	21.42	21.30	21.39
		RB6#0	1	1	20.42	20.37	20.36
	16-QAM	RB1#0	1	1	20.44	20.28	20.31
		RB1#3	1	1	20.50	20.34	20.37
		RB1#5	1	1	20.42	20.21	20.23
		RB3#0	2	2	20.35	20.43	20.51
		RB3#3	2	2	20.41	20.26	20.55
		RB6#0	2	2	19.31	19.30	19.36
3M	QPSK	RB1#0	0	0	21.75	21.26	21.24
		RB1#8	0	0	21.64	21.29	21.23
		RB1#14	1	1	21.23	21.19	21.22
		RB6#0	1	1	20.27	20.34	20.21
		RB6#9	1	1	20.28	20.22	20.35
		RB15#0	1	1	20.33	20.31	20.18
	16-QAM	RB1#0	1	1	20.40	20.82	20.46
		RB1#8	1	1	20.44	20.62	20.46
		RB1#14	2	2	20.27	20.73	20.38
		RB6#0	2	2	19.30	19.28	19.33
		RB6#9	2	2	19.24	19.21	19.23
		RB15#0	2	2	19.40	19.26	19.28
5M	QPSK	RB1#0	0	0	21.54	21.13	21.09
		RB1#13	0	0	21.26	21.23	21.24
		RB1#24	1	1	21.25	21.08	21.09
		RB15#0	1	1	20.31	20.34	20.19
		RB15#10	1	1	20.32	20.29	20.29
		RB25#0	1	1	20.27	20.19	20.26
	16-QAM	RB1#0	1	1	20.53	20.29	19.97
		RB1#13	1	1	20.74	20.37	20.24
		RB1#24	1	1	20.62	20.15	20.08
		RB15#0	2	2	19.24	19.32	19.38
		RB15#10	2	2	19.29	19.28	19.37
		RB25#0	2	2	19.23	19.30	19.24

Test Bandwidth	Test Modulation	Resource Block & RB offset	Target MPR	Meas MPR	Low Channel (dBm)	Middle Channel (dBm)	High Channel (dBm)
10M	QPSK	RB1#0	0	0	21.33	21.24	21.15
		RB1#25	0	0	21.48	21.31	21.33
		RB1#49	0	0	21.19	21.06	21.22
		RB25#0	1	1	20.31	20.32	20.23
		RB25#25	1	1	20.33	20.20	20.39
		RB50#0	1	1	20.38	20.18	20.38
	16-QAM	RB1#0	1	1	20.26	20.91	20.30
		RB1#25	1	1	20.41	20.88	20.53
		RB1#49	2	2	20.34	20.78	20.38
		RB25#0	2	2	19.37	19.24	19.39
		RB25#25	2	2	19.43	19.34	19.43
15M	QPSK	RB1#0	0	0	21.24	21.18	21.19
		RB1#38	0	0	21.40	21.28	21.15
		RB1#74	1	1	21.16	21.20	21.26
		RB36#0	1	1	20.36	20.38	20.33
		RB36#39	1	1	20.45	20.24	20.34
		RB75#0	1	1	20.34	20.26	20.31
	16-QAM	RB1#0	1	1	20.18	20.53	20.31
		RB1#38	1	1	20.31	20.49	20.39
		RB1#74	2	2	20.20	20.28	20.33
		RB36#0	2	2	19.35	19.33	19.35
		RB36#39	2	2	19.30	19.34	20.51
RB75#0		2	2	19.35	19.21	20.48	
20M	QPSK	RB1#0	0	0	22.30	22.46	22.39
		RB1#50	0	0	22.67	22.62	22.68
		RB1#99	1	1	22.22	22.27	22.14
		RB50#0	1	1	21.52	21.90	21.76
		RB50#50	1	1	21.70	21.31	21.46
		RB100#0	1	1	21.70	21.41	21.54
	16-QAM	RB1#0	1	1	21.98	21.73	21.52
		RB1#50	1	1	22.36	22.00	21.81
		RB1#99	2	2	21.81	21.45	21.50
		RB50#0	2	2	20.59	20.51	20.69
		RB50#50	2	2	20.64	20.43	20.39
RB100#0		2	2	20.59	20.48	20.55	

LTE Band 5:

Test Bandwidth	Test Modulation	Resource Block & RB offset	Target MPR	Meas MPR	Low Channel (dBm)	Middle Channel (dBm)	High Channel (dBm)
1.4M	QPSK	RB1#0	0	0	22.74	22.71	22.76
		RB1#3	0	0	23.04	22.94	22.99
		RB1#5	0	0	22.72	22.74	22.84
		RB3#0	1	1	22.87	22.79	22.91
		RB3#3	1	1	22.99	22.92	22.81
		RB6#0	1	1	21.95	21.92	21.81
	16-QAM	RB1#0	1	1	21.76	21.76	21.94
		RB1#3	1	1	22.00	21.99	22.01
		RB1#5	2	2	21.89	21.76	21.86
		RB3#0	2	2	21.92	22.07	21.84
		RB3#3	2	2	21.81	22.00	21.90
		RB6#0	2	2	20.77	20.99	20.88
3M	QPSK	RB1#0	0	0	23.17	22.83	22.90
		RB1#8	0	0	22.92	22.76	22.79
		RB1#14	1	1	22.77	22.73	22.89
		RB6#0	1	1	21.84	21.76	21.87
		RB6#9	1	1	21.80	21.85	21.71
		RB15#0	1	1	21.78	21.82	21.88
	16-QAM	RB1#0	1	1	21.85	22.47	21.92
		RB1#8	1	1	21.82	22.29	21.92
		RB1#14	2	2	21.89	22.42	21.86
		RB6#0	2	2	20.82	20.85	20.89
		RB6#9	2	2	20.71	20.77	20.84
		RB15#0	2	2	20.76	20.88	20.82
5M	QPSK	RB1#0	0	0	23.24	22.82	22.72
		RB1#13	0	0	23.21	22.92	22.86
		RB1#24	0	0	23.02	22.82	22.64
		RB15#0	1	1	22.04	21.97	21.95
		RB15#10	1	1	21.93	21.77	21.73
		RB25#0	1	1	21.95	21.82	21.84
	16-QAM	RB1#0	1	1	21.80	21.61	21.98
		RB1#13	1	1	21.93	21.75	22.05
		RB1#24	1	1	21.85	21.76	22.05
		RB15#0	2	2	20.95	20.86	20.85
		RB15#10	2	2	20.78	20.88	20.70
		RB25#0	2	2	20.85	20.96	20.80

Test Bandwidth	Test Modulation	Resource Block & RB offset	Target MPR	Meas MPR	Low Channel (dBm)	Middle Channel (dBm)	High Channel (dBm)
10M	QPSK	RB1#0	0	0	23.37	22.93	22.94
		RB1#25	0	0	23.42	23.23	22.93
		RB1#49	1	1	23.25	22.85	22.72
		RB25#0	1	1	22.41	21.97	22.05
		RB25#25	1	1	22.37	22.25	21.79
		RB50#0	1	1	22.41	22.11	21.72
	16-QAM	RB1#0	1	1	22.20	22.47	22.05
		RB1#25	1	1	22.42	22.71	22.14
		RB1#49	2	2	22.06	22.39	21.87
		RB25#0	2	2	21.58	21.10	20.99
		RB25#25	2	2	21.45	21.05	20.80
		RB50#0	2	2	21.37	20.91	20.93

LTE Band 7:

Test Bandwidth	Test Modulation	Resource Block & RB offset	Target MPR	Meas MPR	Low Channel (dBm)	Middle Channel (dBm)	High Channel (dBm)
5M	QPSK	RB1#0	0	0	21.92	21.78	21.66
		RB1#13	0	0	22.02	21.82	21.73
		RB1#24	0	0	21.85	21.69	21.57
		RB15#0	1	1	21.11	20.92	20.85
		RB15#10	1	1	21.10	20.91	20.76
		RB25#0	1	1	20.96	20.92	20.69
	16-QAM	RB1#0	1	1	20.94	20.97	20.68
		RB1#13	1	1	21.03	21.19	20.93
		RB1#24	1	1	20.97	20.99	20.68
		RB15#0	2	2	20.04	19.89	19.92
		RB15#10	2	2	20.09	19.75	19.79
		RB25#0	2	2	20.10	19.86	19.85
10M	QPSK	RB1#0	0	0	22.10	21.81	21.79
		RB1#25	0	0	22.10	21.94	21.92
		RB1#49	0	0	21.98	21.89	21.79
		RB25#0	1	1	20.97	20.88	20.92
		RB25#25	1	1	20.94	20.77	20.88
		RB50#0	1	1	21.06	20.85	20.87
	16-QAM	RB1#0	1	1	21.09	21.48	20.91
		RB1#25	1	1	21.07	21.55	21.07
		RB1#49	1	1	20.94	21.29	20.85
		RB25#0	2	2	20.05	19.91	19.90
		RB25#25	2	2	20.16	19.85	19.92
		RB50#0	2	2	20.00	19.82	19.82
15M	QPSK	RB1#0	0	0	22.08	21.80	21.64
		RB1#38	0	0	22.12	21.83	21.69
		RB1#74	0	0	21.77	21.73	21.72
		RB36#0	1	1	21.03	20.86	20.74
		RB36#39	1	1	21.01	20.88	20.80
		RB75#0	1	1	21.07	20.89	20.79
	16-QAM	RB1#0	1	1	21.43	21.30	20.83
		RB1#38	1	1	21.46	21.33	20.83
		RB1#74	1	1	21.30	21.23	20.79
		RB36#0	2	2	19.91	19.86	19.70
		RB36#39	2	2	19.97	19.77	19.77
		RB75#0	2	2	19.99	19.92	19.76

Test Bandwidth	Test Modulation	Resource Block & RB offset	Target MPR	Meas MPR	Low Channel (dBm)	Middle Channel (dBm)	High Channel (dBm)
20M	QPSK	RB1#0	0	0	21.84	21.60	21.72
		RB1#50	0	0	22.09	22.06	22.02
		RB1#99	0	0	21.57	21.50	21.64
		RB50#0	1	1	21.10	21.13	20.82
		RB50#50	1	1	21.03	20.80	20.79
		RB100#0	1	1	21.03	20.94	20.78
	16-QAM	RB1#0	1	1	21.34	20.88	20.80
		RB1#50	1	1	21.61	21.20	21.01
		RB1#99	1	1	21.08	20.84	20.62
		RB50#0	2	2	20.05	19.85	19.78
		RB50#50	2	2	20.06	19.87	19.78
		RB100#0	2	2	20.10	20.01	19.81

LTE Band 38:

Test Bandwidth	Test Modulation	Resource Block & RB offset	Target MPR	Meas MPR	Low Channel (dBm)	Middle Channel (dBm)	High Channel (dBm)
5M	QPSK	RB1#0	0	0	21.73	21.73	21.81
		RB1#13	0	0	21.97	21.90	21.87
		RB1#24	1	1	21.73	21.73	21.80
		RB15#0	1	1	20.96	20.86	20.88
		RB15#10	1	1	20.81	20.88	20.86
		RB25#0	1	1	20.88	20.77	20.83
	16-QAM	RB1#0	1	1	20.83	20.78	21.10
		RB1#13	1	1	20.92	20.94	21.17
		RB1#24	1	1	20.74	20.81	21.05
		RB15#0	2	2	19.94	19.88	19.95
		RB15#10	2	2	19.84	19.80	20.00
		RB25#0	2	2	19.94	19.79	19.95
10M	QPSK	RB1#0	0	0	22.47	22.32	22.24
		RB1#25	0	0	22.68	22.58	22.70
		RB1#49	0	0	22.39	22.17	22.40
		RB25#0	1	1	21.50	21.15	21.39
		RB25#25	1	1	21.31	21.17	21.53
		RB50#0	1	1	21.36	21.13	21.50
	16-QAM	RB1#0	1	1	21.47	21.14	21.15
		RB1#25	1	1	21.71	21.40	21.57
		RB1#49	2	2	21.39	20.96	21.17
		RB25#0	2	2	20.48	19.93	20.37
		RB25#25	2	2	20.33	20.06	20.49
		RB50#0	2	2	20.35	20.05	20.49
15M	QPSK	RB1#0	0	0	22.34	22.24	22.12
		RB1#38	0	0	22.33	22.10	22.19
		RB1#74	1	1	22.23	21.84	22.23
		RB36#0	1	1	21.58	20.92	21.35
		RB36#39	1	1	21.46	21.01	21.53
		RB75#0	1	1	21.55	20.99	21.45
	16-QAM	RB1#0	1	1	21.41	21.10	21.39
		RB1#38	1	1	21.49	21.08	21.17
		RB1#74	2	2	21.42	21.06	21.30
		RB36#0	2	2	20.43	20.27	20.19
		RB36#39	2	2	20.31	20.41	20.50
		RB75#0	2	2	20.41	20.24	20.45

Test Bandwidth	Test Modulation	Resource Block & RB offset	Target MPR	Meas MPR	Low Channel (dBm)	Middle Channel (dBm)	High Channel (dBm)
20M	QPSK	RB1#0	0	0	22.37	22.25	21.86
		RB1#50	0	0	22.66	22.61	22.37
		RB1#99	1	1	22.10	22.05	22.13
		RB50#0	1	1	21.43	21.20	21.13
		RB50#50	1	1	21.38	21.24	21.52
		RB100#0	1	1	21.35	21.15	21.35
	16-QAM	RB1#0	1	1	21.54	20.75	20.65
		RB1#50	1	1	21.80	21.31	21.24
		RB1#99	2	2	21.31	21.13	21.15
		RB50#0	2	2	20.36	20.05	20.27
		RB50#50	2	2	20.27	20.21	20.58
		RB100#0	2	2	20.43	20.14	20.39

LTE Band 40 Lower:

Test Bandwidth	Test Modulation	Resource Block & RB offset	Target MPR	Meas MPR	Low Channel (dBm)	Middle Channel (dBm)	High Channel (dBm)
5M	QPSK	RB1#0	0	0	22.50	22.52	22.56
		RB1#13	0	0	22.60	22.63	22.60
		RB1#24	1	1	22.49	22.53	22.45
		RB15#0	1	1	21.60	21.62	21.51
		RB15#10	1	1	21.53	21.44	21.51
		RB25#0	1	1	21.61	21.42	21.56
	16-QAM	RB1#0	1	1	21.60	21.74	21.54
		RB1#13	1	1	21.71	21.89	21.59
		RB1#24	1	1	21.46	21.79	21.41
		RB15#0	2	2	20.53	20.60	20.54
		RB15#10	2	2	20.60	20.58	20.50
		RB25#0	2	2	20.56	20.59	20.59
10M	QPSK	RB1#0	0	0	/	22.58	/
		RB1#25	0	0	/	22.79	/
		RB1#49	0	0	/	22.72	/
		RB25#0	1	1	/	21.93	/
		RB25#25	1	1	/	21.72	/
		RB50#0	1	1	/	21.48	/
	16-QAM	RB1#0	1	1	/	21.73	/
		RB1#25	1	1	/	21.87	/
		RB1#49	2	2	/	21.74	/
		RB25#0	2	2	/	20.64	/
		RB25#25	2	2	/	20.55	/
		RB50#0	2	2	/	20.52	/

LTE Band 40 Upper:

Test Bandwidth	Test Modulation	Resource Block & RB offset	Target MPR	Meas MPR	Low Channel (dBm)	Middle Channel (dBm)	High Channel (dBm)
5M	QPSK	RB1#0	0	0	22.70	22.69	22.78
		RB1#13	0	0	22.87	22.97	22.93
		RB1#24	1	1	22.73	22.72	22.77
		RB15#0	1	1	21.76	21.86	21.79
		RB15#10	1	1	21.72	21.88	21.80
		RB25#0	1	1	21.89	21.90	21.75
	16-QAM	RB1#0	1	1	21.89	21.82	21.88
		RB1#13	1	1	22.13	21.93	22.03
		RB1#24	1	1	22.04	21.70	21.78
		RB15#0	2	2	20.84	20.75	20.82
		RB15#10	2	2	20.91	20.73	20.88
		RB25#0	2	2	20.87	20.91	20.88
10M	QPSK	RB1#0	0	0	/	22.81	/
		RB1#25	0	0	/	23.12	/
		RB1#49	0	0	/	22.90	/
		RB25#0	1	1	/	22.10	/
		RB25#25	1	1	/	22.57	/
		RB50#0	1	1	/	21.81	/
	16-QAM	RB1#0	1	1	/	21.75	/
		RB1#25	1	1	/	22.08	/
		RB1#49	2	2	/	21.79	/
		RB25#0	2	2	/	20.93	/
		RB25#25	2	2	/	21.03	/
		RB50#0	2	2	/	20.86	/

LTE Band 41:

Test Bandwidth	Test Modulation	Resource Block & RB offset	Target MPR	Meas MPR	Low Channel (dBm)	2570MHz (dBm)	Middle Channel (dBm)	High Channel (dBm)
5M	QPSK	RB1#0	0	0	22.37	22.32	22.36	22.50
		RB1#13	0	0	22.39	22.47	22.52	22.57
		RB1#24	1	1	22.37	22.31	22.38	22.49
		RB15#0	1	1	21.22	21.53	21.45	21.65
		RB15#10	1	1	21.37	21.49	21.42	21.48
		RB25#0	1	1	21.42	21.47	21.52	21.55
	16-QAM	RB1#0	1	1	21.33	21.67	21.65	21.35
		RB1#13	1	1	21.43	21.69	21.63	21.48
		RB1#24	1	1	21.39	21.72	21.67	21.31
		RB15#0	2	2	20.44	20.39	20.37	20.54
		RB15#10	2	2	20.51	20.61	20.55	20.39
		RB25#0	2	2	20.49	20.36	20.42	20.45
10M	QPSK	RB1#0	0	0	22.45	22.56	22.59	22.49
		RB1#25	0	0	22.81	22.82	22.79	22.79
		RB1#49	0	0	22.32	22.39	22.46	22.53
		RB25#0	1	1	21.24	21.51	21.51	21.50
		RB25#25	1	1	21.46	21.59	21.59	21.55
		RB50#0	1	1	21.32	21.50	21.47	21.65
	16-QAM	RB1#0	1	1	21.43	21.61	21.65	21.71
		RB1#25	1	1	21.70	21.80	21.79	21.89
		RB1#49	2	2	21.45	21.62	21.57	21.73
		RB25#0	2	2	20.31	20.53	20.51	20.55
		RB25#25	2	2	20.45	20.52	20.45	20.51
		RB50#0	2	2	20.49	20.51	20.55	20.49
15M	QPSK	RB1#0	0	0	22.35	22.39	22.40	22.43
		RB1#38	0	0	22.35	22.67	22.61	22.48
		RB1#74	1	1	22.22	22.40	22.45	22.44
		RB36#0	1	1	21.38	21.60	21.64	21.68
		RB36#39	1	1	21.45	21.55	21.47	21.50
		RB75#0	1	1	21.35	21.66	21.64	21.59
	16-QAM	RB1#0	1	1	21.32	21.59	21.61	21.70
		RB1#38	1	1	21.38	21.56	21.65	21.74
		RB1#74	2	2	21.12	21.67	21.60	21.67
		RB36#0	2	2	20.31	20.47	20.56	20.47
		RB36#39	2	2	20.42	20.54	20.58	20.53
		RB75#0	2	2	20.46	20.61	20.52	20.52

Test Bandwidth	Test Modulation	Resource Block & RB offset	Target MPR	Meas MPR	Low Channel (dBm)	2570MHz (dBm)	Middle Channel (dBm)	High Channel (dBm)
20M	QPSK	RB1#0	0	0	22.35	22.15	22.19	22.33
		RB1#50	0	0	22.78	22.66	22.67	22.68
		RB1#99	1	1	22.13	22.07	22.13	22.22
		RB50#0	1	1	21.18	21.48	21.49	21.55
		RB50#50	1	1	21.58	21.76	21.78	21.69
		RB100#0	1	1	21.39	21.36	21.42	21.47
	16-QAM	RB1#0	1	1	21.58	21.36	21.35	21.28
		RB1#50	1	1	22.00	21.80	21.79	21.76
		RB1#99	2	2	21.23	21.22	21.18	21.18
		RB50#0	2	2	20.24	20.39	20.36	20.64
		RB50#50	2	2	20.54	20.44	20.47	20.55
		RB100#0	2	2	20.24	20.45	20.44	20.56

Note:

- SAR for LTE band exposure configurations is measured according to the procedures of KDB 941225 D05 SAR for LTE Devices v02.
- The CMW500 Wideband Radio Communication tester is used for LTE output power measurements and SAR testing. Closed loop power control is used to keep the radio transmitters the max output power during the test.
- KDB941225D05v02- SAR for higher order modulation is required only when the highest maximum output power for the configuration in the higher order modulation is $> \frac{1}{2}$ dB higher than the same configuration in QPSK or when the reported SAR for the QPSK configuration is > 1.45 W/kg.

Wi-Fi 2.4G:

Mode	Channel frequency (MHz)	Data Rate	Duty cycle (%)	RF Output Power(dBm)
802.11b	2412	1Mbps	100	15.37
	2442			15.42
	2472			14.71
802.11g	2412	6Mbps	100	11.56
	2442			12.04
	2472			11.50
802.11n ht20	2412	MCS0	100	11.60
	2442			11.78
	2472			11.13
802.11n ht40	2422	MCS0	100	11.72
	2442			11.73
	2462			11.80

Wi-Fi 5.2G:

Mode	Channel frequency (MHz)	Data Rate	Duty cycle (%)	RF Output Power (dBm)
802.11a	5180	6Mbps	100	9.91
	5200			9.99
	5240			9.80
802.11ac vht20	5180	MCS0	100	9.97
	5200			9.63
	5240			9.51
802.11ac vht40	5190	MCS0	100	9.57
	5230			9.33
802.11ac vht80	5210	MCS0	100	9.61

Wi-Fi 5.3G:

Mode	Channel frequency (MHz)	Data Rate	Duty cycle (%)	RF Output Power (dBm)
802.11a	5260	6Mbps	100	9.57
	5280			9.56
	5320			9.47
802.11ac vht20	5260	MCS0	100	9.47
	5280			9.48
	5320			9.25
802.11ac vht40	5270	MCS0	100	9.26
	5310			9.34
802.11ac vht80	5290	MCS0	100	9.20

Wi-Fi 5.6G:

Mode	Channel frequency (MHz)	Data Rate	Duty cycle (%)	RF Output Power (dBm)
802.11a	5500	6Mbps	100	10.44
	5580			11.71
	5700			12.12
	5720			12.03
802.11ac vht20	5500	MCS0	100	9.84
	5580			11.08
	5700			11.41
	5720			11.20
802.11ac vht40	5510	MCS0	100	10.21
	5550			10.63
	5670			11.39
	5710			11.36
802.11ac vht80	5530	MCS0	100	10.36
	5610			11.13
	5690			11.05

Wi-Fi 5.8G:

Mode	Channel frequency (MHz)	Data Rate	Duty cycle (%)	RF Output Power (dBm)
802.11a	5745	6Mbps	100	12.05
	5785			11.92
	5825			11.45
802.11ac vht20	5745	MCS0	100	12.16
	5785			11.81
	5825			11.26
802.11ac vht40	5755	MCS0	100	11.83
	5795			11.59
802.11ac vht80	5775	MCS0	100	11.84

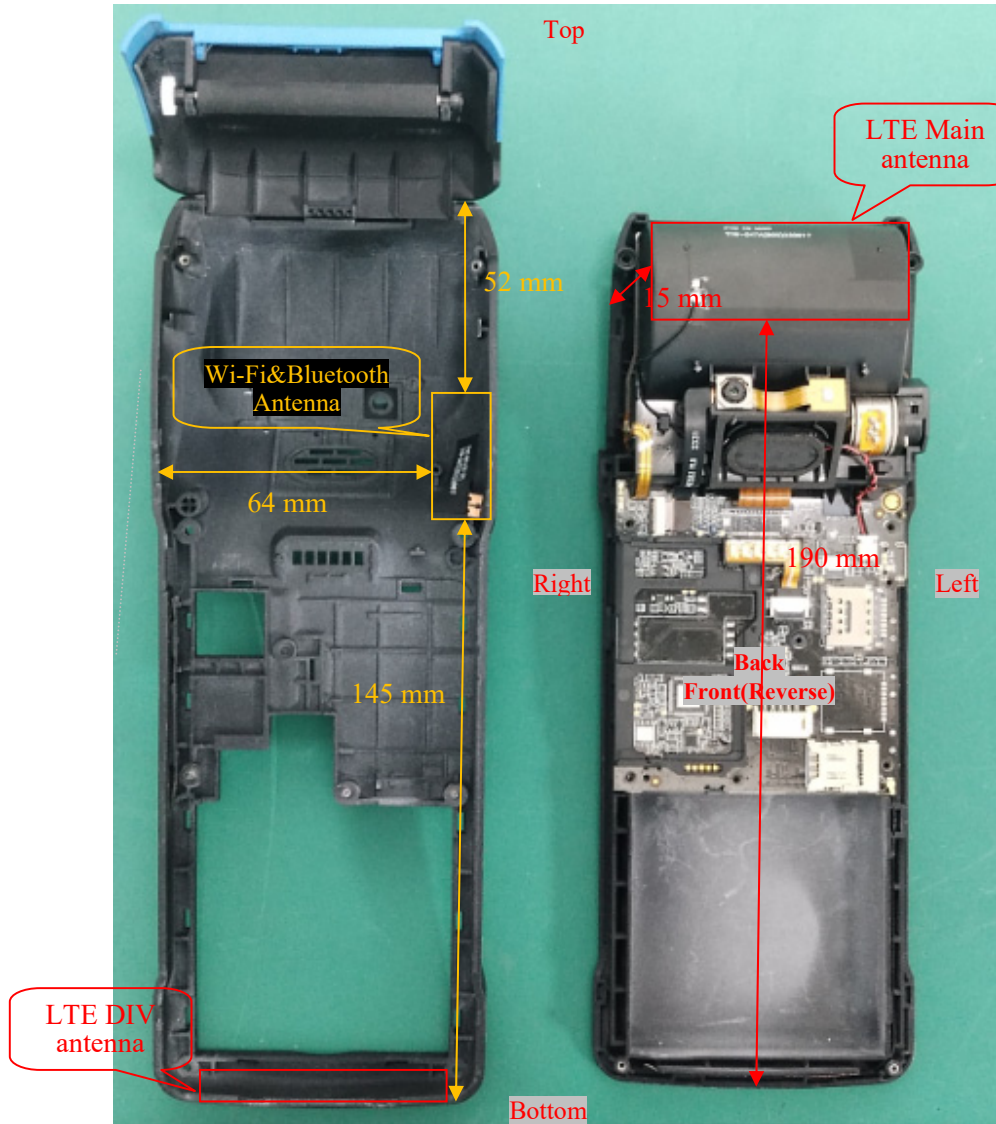
Bluetooth:

Mode	Channel frequency (MHz)	RF Output Power (dBm)
BDR(GFSK)	2402	4.93
	2441	5.78
	2480	4.11
EDR($\pi/4$ -DQPSK)	2402	4.00
	2441	5.00
	2480	3.35
EDR(8DPSK)	2402	4.00
	2441	4.92
	2480	3.37
BLE 1M	2402	6.68
	2440	7.43
	2480	5.52
BLE 2M	2404	7.44
	2440	7.02
	2478	6.15

Note: The duty cycle plots please refer to radio report.

7. STANDALONE SAR TEST EXCLUSION CONSIDERATIONS

Antennas Location:



Note: The LTE DIV antenna cannot transmit and is receiving only.

7.1 Antenna Distance To Edge

Antenna Distance To Edge(mm)						
Antenna	Front	Back	Left	Right	Top	Bottom
WWAN Antenna	15	< 5	<5	<5	<5	190
Wi-Fi & Bluetooth Antenna	<5	< 5	64	< 5	52	145

7.2 Standalone SAR test exclusion considerations

Mode	Frequency (MHz)	Output Power (dBm)	Output Power (mW)	Distance (mm)	Calculated value	Threshold (1-g)	SAR Test Exclusion
Wi-Fi 2.4G	2472	15.5	35.48	5	11.2	3	NO
Wi-Fi 5.2G	5240	10.1	10.23	5	4.7	3	NO
Wi-Fi 5.3G	5320	9.6	9.12	5	4.2	3	NO
Wi-Fi 5.6G	5720	12.2	16.60	5	7.9	3	NO
Wi-Fi 5.8G	5825	12.3	16.98	5	8.2	3	NO
Bluetooth	2478	7.5	5.62	5	1.8	3	YES

Handheld:

Mode	Frequency (MHz)	Output Power (dBm)	Output Power (mW)	Distance (mm)	Calculated value	Threshold (10-g)	SAR Test Exclusion
Wi-Fi 2.4G	2472	15.5	35.48	0	11.2	7.5	NO
Wi-Fi 5.2G	5240	10.1	10.23	0	4.7	7.5	YES
Wi-Fi 5.3G	5320	9.6	9.12	0	4.2	7.5	YES
Wi-Fi 5.6G	5720	12.2	16.60	0	7.9	7.5	NO
Wi-Fi 5.8G	5825	12.3	16.98	0	8.2	7.5	NO
Bluetooth	2478	7.5	5.62	0	1.8	7.5	YES

Note: The Bluetooth based peak power for calculation, and Wi-Fi based average power for calculation.

NOTE:

The 1-g and 10-g SAR test exclusion thresholds for 100 MHz to 6 GHz at test separation distances ≤ 50 mm are determined by:

$[(\text{max. power of channel, including tune-up tolerance, mW}) / (\text{min. test separation distance, mm})] \cdot$

$[\sqrt{f(\text{GHz})}] \leq 3.0$ for 1-g SAR and ≤ 7.5 for 10-g extremity SAR, where

1. $f(\text{GHz})$ is the RF channel transmit frequency in GHz.

2. Power and distance are rounded to the nearest mW and mm before calculation.

3. The result is rounded to one decimal place for comparison.

4. When the minimum test separation distance is < 5 mm, a distance of 5 mm is applied to determine SAR test Exclusion.

According to KDB 447498 D01 General RF Exposure Guidance v06, clause 4.3. General SAR test exclusion guidance:

c) For frequencies below 100 MHz, the following may be considered for SAR test exclusion (also illustrated in Appendix C):

1) For test separation distances > 50 mm and < 200 mm, the power threshold at the corresponding test separation distance at 100 MHz in step b) is multiplied by $[1 + \log(100/f(\text{MHz}))]$

2) For test separation distances ≤ 50 mm, the power threshold determined by the equation in c) 1) for 50 mm and 100 MHz is multiplied by $\frac{1}{2}$

3) SAR measurement procedures are not established below 100 MHz.

Measurement Result:

For NFC, the power of EUT: E Field@3m is 65.85dBuV/m = -29.35 dBm(0.0012mW)

Note: $E[\text{dB}\mu\text{V}/\text{m}] = \text{EIRP}[\text{dBm}] + 95.2$ for $d = 3 \text{ m}$.

SAR test exclusion threshold for NFC(13.56MHz) separation distance < 50mm

$$= [474 * (1 + \log(100/f_{\text{(MHz)}}))] / 2$$

$$= 443 \text{ mW}$$

$$> 0.0012 \text{ mW}$$

Conclusion:

The NFC SAR evaluation can be exempted.

7.3 Standalone SAR estimation:

Mode	Frequency (MHz)	Output Power (dBm)	Output Power (mW)	Distance (mm)	Estimated SAR (W/kg)
BT Body	2478	7.5	5.62	5	0.24(1g)
BT Handheld	2478	7.5	5.62	0	0.10(10g)

Note: The Bluetooth based peak power for calculation.

When standalone SAR test exclusion applies to an antenna that transmits simultaneously with other antennas, the standalone SAR must be estimated according to following to determine simultaneous transmission SAR test exclusion:

$$[(\text{max. power of channel, including tune-up tolerance, mW}) / (\text{min. test separation distance, mm})] \cdot [\sqrt{f(\text{GHz})} / x]$$

W/kg for test separation distances $\leq 50 \text{ mm}$;

where $x = 7.5$ for 1-g SAR, and $x = 18.75$ for 10-g SAR.

When the minimum test separation distance is < 5 mm, a distance of 5 mm is applied to determine SAR test Exclusion

7.3 Standalone SAR test exclusion considerations:**Handheld:**

Mode	Frequency (MHz)	Output Power (dBm)	Output Power (mW)	Test Exclusion Distance (mm)
GSM 850	848.8	25.5	354.81	43.6
PCS 1900	1909.8	22.3	169.82	31.3
WCDMA Band 2	1907.6	23.0	199.53	36.8
WCDMA Band 4	1752.6	23.2	208.93	36.9
WCDMA Band 5	846.6	23.5	223.87	27.5
LTE Band 2	1900	22.1	162.18	29.9
LTE Band 4	1745	22.7	186.21	32.8
LTE Band 5	844	23.5	223.87	27.5
LTE Band 7	2560	22.3	169.82	36.3
LTE Band 40 Lower	2310	23.0	199.53	40.5
LTE Band 40 Upper	2355	23.2	208.93	42.8
LTE Band 41&38	2645	23.0	199.53	43.4
WLAN 2.4G	2472	15.5	35.48	7.5
WLAN 5.2G	5240	10.1	10.23	<5
WLAN 5.3G	5320	9.6	9.12	<5
WLAN 5.6G	5720	12.2	16.59	5.3
WLAN 5.8G	5825	12.3	16.98	5.5

Note: The maximum time based average power is used for calculation.

7.5 SAR test exclusion for the EUT edge considerations Result

Handheld:

Mode	Front	Back	Left	Right	Top	Bottom
GSM 850	Required	Required	Required	Required	Required	Exclusion
PCS 1900	Required	Required	Required	Required	Required	Exclusion
WCDMA Band 2	Required	Required	Required	Required	Required	Exclusion
WCDMA Band 4	Required	Required	Required	Required	Required	Exclusion
WCDMA Band 5	Required	Required	Required	Required	Required	Exclusion
LTE Band 2	Required	Required	Required	Required	Required	Exclusion
LTE Band 4	Required	Required	Required	Required	Required	Exclusion
LTE Band 5	Required	Required	Required	Required	Required	Exclusion
LTE Band 7	Required	Required	Required	Required	Required	Exclusion
LTE Band 40 Lower	Required	Required	Required	Required	Required	Exclusion
LTE Band 40 Upper	Required	Required	Required	Required	Required	Exclusion
LTE Band 41&38	Required	Required	Required	Required	Required	Exclusion
WLAN 2.4G	Required	Required	Exclusion	Required	Exclusion	Exclusion
WLAN 5.2G	Required	Required	Exclusion	Required	Exclusion	Exclusion
WLAN 5.3G	Required	Required	Exclusion	Required	Exclusion	Exclusion
WLAN 5.6G	Required	Required	Exclusion	Required	Exclusion	Exclusion
WLAN 5.8G	Required	Required	Exclusion	Required	Exclusion	Exclusion

Note:

Required: The distance is less than **Test Exclusion Distance**, the SAR test is required.

Exclusion: The distance is large than **Test Exclusion Distance**, SAR test is not required.

SAR test exclusion for the EUT edge considerations detail:

Distance < 50mm (To Edges)

The 1-g and 10-g SAR test exclusion thresholds for 100 MHz to 6 GHz at test separation distances ≤ 50 mm are determined by:

$[(\text{max. power of channel, including tune-up tolerance, mW}) / (\text{min. test separation distance, mm})] \cdot [\sqrt{f(\text{GHz})}] \leq 3.0$
for 1-g SAR and ≤ 7.5 for 10-g extremity SAR, where

1.f(GHz) is the RF channel transmit frequency in GHz.

2.Power and distance are rounded to the nearest mW and mm before calculation.

3.The result is rounded to one decimal place for comparison.

4.When the minimum test separation distance is < 5 mm, a distance of 5 mm is applied to determine SAR test Exclusion.

Distance > 50mm (To Edges)

At 100 MHz to 6 GHz and for test separation distances > 50 mm, the SAR test exclusion threshold is determined according to the following:

a.[Power allowed at numeric threshold for 50 mm in step 1) + (test separation distance - 50 mm) · (f(MHz)/150)] mW, at 100 MHz to 1500 MHz

b.[Power allowed at numeric threshold for 50 mm in step 1) + (test separation distance - 50 mm) · 10] mW at > 1500 MHz and ≤ 6 GHz.

8. SAR MEASUREMENT RESULTS

This page summarizes the results of the performed dosimetric evaluation.

8.1 SAR Test Data

Environmental Conditions

Temperature:	22.9-24.1 °C	22.5-23.7 °C	22.1-23.6 °C	23.1-24.3 °C	22.2-23.9 °C	21.9-23.2 °C
Relative Humidity:	52 %	57 %	51 %	49 %	54 %	51 %
ATM Pressure:	100.5 kPa	100.6 kPa	100.4 kPa	100.3 kPa	100.3 kPa	100.4 kPa
Test Date:	2023/10/1	2023/10/3	2023/10/4	2023/10/5	2023/10/6	2023/10/7

Testing was performed by Wen Chen, Weidong Lu, Aixlee Li.

GSM 850:**Body Supported Mode**

EUT Position	Frequency (MHz)	Test Mode	Max. Meas. Power (dBm)	Max. Rated Power (dBm)	1g SAR (W/kg), Limit=1.6W/kg			
					Scaled Factor	Meas. SAR	Scaled SAR	Plot
Body Back (5mm)	824.2	GPRS	/	/	/	/	/	/
	836.6	GPRS	28.47	28.5	1.007	0.286	0.29	1#
	848.8	GPRS	/	/	/	/	/	/

Handheld Mode

EUT Position	Frequency (MHz)	Test Mode	Max. Meas. Power (dBm)	Max. Rated Power (dBm)	10g SAR (W/kg), Limit=4.0W/kg			
					Scaled Factor	Meas. SAR	Scaled SAR	Plot
Handheld Front (0mm)	824.2	GPRS	/	/	/	/	/	/
	836.6	GPRS	28.47	28.5	1.007	0.132	0.14	2#
	848.8	GPRS	/	/	/	/	/	/
Handheld Back (0mm)	824.2	GPRS	/	/	/	/	/	/
	836.6	GPRS	28.47	28.5	1.007	0.376	0.38	3#
	848.8	GPRS	/	/	/	/	/	/
Handheld Left (0mm)	824.2	GPRS	/	/	/	/	/	/
	836.6	GPRS	28.47	28.5	1.007	0.230	0.24	4#
	848.8	GPRS	/	/	/	/	/	/
Handheld Right (0mm)	824.2	GPRS	/	/	/	/	/	/
	836.6	GPRS	28.47	28.5	1.007	0.288	0.29	5#
	848.8	GPRS	/	/	/	/	/	/
Handheld Top (0mm)	824.2	GPRS	/	/	/	/	/	/
	836.6	GPRS	28.47	28.5	1.007	0.968	0.98	6#
	848.8	GPRS	/	/	/	/	/	/

Note:

1. When the SAR value is less than half of the limit, testing for other channels are optional.
2. The EUT transmit and receive through the same GSM antenna while testing SAR.
3. When SAR or MPE is not measured at the maximum power level allowed for production units, the results must be scaled to the maximum tune-up tolerance limit according to the power applied to the individual channels tested to determine compliance.
4. When the maximum output power variation across the required test channels is > 0.5 dB, instead of the middle channel, the highest output power channel must be used.
5. The Multi-slot Classes of EUT is Class 12 which has maximum 4 Downlink slots and 4 Uplink slots, the maximum active slots is 5, when perform the multiple slots scan, 1DL+4UL is the worst case.

PCS 1900:**Body Supported Mode**

EUT Position	Frequency (MHz)	Test Mode	Max. Meas. Power (dBm)	Max. Rated Power (dBm)	1g SAR (W/kg), Limit=1.6W/kg			
					Scaled Factor	Meas. SAR	Scaled SAR	Plot
Body Back (5mm)	1850.2	GPRS	28.20	28.3	1.023	0.364	0.38	7#
	1880	GPRS	/	/	/	/	/	/
	1909.8	GPRS	/	/	/	/	/	/

Handheld Mode

EUT Position	Frequency (MHz)	Test Mode	Max. Meas. Power (dBm)	Max. Rated Power (dBm)	10g SAR (W/kg), Limit=4.0W/kg			
					Scaled Factor	Meas. SAR	Scaled SAR	Plot
Handheld Front (0mm)	1850.2	GPRS	28.20	28.3	1.023	0.126	0.13	8#
	1880	GPRS	/	/	/	/	/	/
	1909.8	GPRS	/	/	/	/	/	/
Handheld Back (0mm)	1850.2	GPRS	28.20	28.3	1.023	0.481	0.50	9#
	1880	GPRS	/	/	/	/	/	/
	1909.8	GPRS	/	/	/	/	/	/
Handheld Left (0mm)	1850.2	GPRS	28.20	28.3	1.023	0.165	0.17	10#
	1880	GPRS	/	/	/	/	/	/
	1909.8	GPRS	/	/	/	/	/	/
Handheld Right (0mm)	1850.2	GPRS	28.20	28.3	1.023	0.118	0.13	11#
	1880	GPRS	/	/	/	/	/	/
	1909.8	GPRS	/	/	/	/	/	/
Handheld Top (0mm)	1850.2	GPRS	28.20	28.3	1.023	1.000	1.03	12#
	1880	GPRS	/	/	/	/	/	/
	1909.8	GPRS	/	/	/	/	/	/

Note:

1. When the SAR value is less than half of the limit, testing for other channels are optional.
2. The EUT transmit and receive through the same GSM antenna while testing SAR.
3. When SAR or MPE is not measured at the maximum power level allowed for production units, the results must be scaled to the maximum tune-up tolerance limit according to the power applied to the individual channels tested to determine compliance.
4. When the maximum output power variation across the required test channels is > 0.5 dB, instead of the middle channel, the highest output power channel must be used.
5. The Multi-slot Classes of EUT is Class 12 which has maximum 4 Downlink slots and 4 Uplink slots, the maximum active slots is 5, when perform the multiple slots scan, 3DL+2UL is the worst case.

WCDMA Band 2:**Body Supported Mode**

EUT Position	Frequency (MHz)	Test Mode	Max. Meas. Power (dBm)	Max. Rated Power (dBm)	1g SAR (W/kg), Limit=1.6W/kg			
					Scaled Factor	Meas. SAR	Scaled SAR	Plot
Body Back (5mm)	1852.4	RMC	/	/	/	/	/	/
	1880	RMC	22.70	23.0	1.072	0.199	0.22	13#
	1907.6	RMC	/	/	/	/	/	/

Handheld Mode

EUT Position	Frequency (MHz)	Test Mode	Max. Meas. Power (dBm)	Max. Rated Power (dBm)	10g SAR (W/kg), Limit=4.0W/kg			
					Scaled Factor	Meas. SAR	Scaled SAR	Plot
Handheld Front (0mm)	1852.4	RMC	/	/	/	/	/	/
	1880	RMC	22.70	23.0	1.072	0.217	0.24	14#
	1907.6	RMC	/	/	/	/	/	/
Handheld Back (0mm)	1852.4	RMC	/	/	/	/	/	/
	1880	RMC	22.70	23.0	1.072	0.131	0.15	15#
	1907.6	RMC	/	/	/	/	/	/
Handheld Left (0mm)	1852.4	RMC	/	/	/	/	/	/
	1880	RMC	22.70	23.0	1.072	0.451	0.49	16#
	1907.6	RMC	/	/	/	/	/	/
Handheld Right (0mm)	1852.4	RMC	/	/	/	/	/	/
	1880	RMC	22.70	23.0	1.072	0.493	0.53	17#
	1907.6	RMC	/	/	/	/	/	/
Handheld Top (0mm)	1852.4	RMC	22.79	23.0	1.050	1.840	1.94	18#
	1880	RMC	22.70	23.0	1.072	2.050	2.20	19#
	1907.6	RMC	22.81	23.0	1.045	2.260	2.37	20#

WCDMA Band 4:**Body Supported Mode**

EUT Position	Frequency (MHz)	Test Mode	Max. Meas. Power (dBm)	Max. Rated Power (dBm)	1g SAR (W/kg), Limit=1.6W/kg			
					Scaled Factor	Meas. SAR	Scaled SAR	Plot
Body Back (5mm)	1712.4	RMC	23.10	23.2	1.023	0.780	0.80	21#
	1732.6	RMC	23.08	23.2	1.028	0.940	0.97	22#
	1752.6	RMC	22.97	23.2	1.054	0.900	0.95	23#

Handheld Mode

EUT Position	Frequency (MHz)	Test Mode	Max. Meas. Power (dBm)	Max. Rated Power (dBm)	10g SAR (W/kg), Limit=4.0W/kg			
					Scaled Factor	Meas. SAR	Scaled SAR	Plot
Handheld Front (0mm)	1712.4	RMC	/	/	/	/	/	/
	1732.6	RMC	23.08	23.2	1.028	0.168	0.18	24#
	1752.6	RMC	/	/	/	/	/	/
Handheld Back (0mm)	1712.4	RMC	/	/	/	/	/	/
	1732.6	RMC	23.08	23.2	1.028	1.250	1.29	25#
	1752.6	RMC	/	/	/	/	/	/
Handheld Left (0mm)	1712.4	RMC	/	/	/	/	/	/
	1732.6	RMC	23.08	23.2	1.028	0.350	0.36	26#
	1752.6	RMC	/	/	/	/	/	/
Handheld Right (0mm)	1712.4	RMC	/	/	/	/	/	/
	1732.6	RMC	23.08	23.2	1.028	0.162	0.17	27#
	1752.6	RMC	/	/	/	/	/	/
Handheld Top (0mm)	1712.4	RMC	/	/	/	/	/	/
	1732.6	RMC	23.08	23.2	1.028	1.570	1.62	28#
	1752.6	RMC	/	/	/	/	/	/

WCDMA Band 5:**Body Supported Mode**

EUT Position	Frequency (MHz)	Test Mode	Max. Meas. Power (dBm)	Max. Rated Power (dBm)	1g SAR (W/kg), Limit=1.6W/kg			
					Scaled Factor	Meas. SAR	Scaled SAR	Plot
Body Back (5mm)	826.4	RMC	/	/	/	/	/	/
	836.6	RMC	23.39	23.5	1.026	0.166	0.18	29#
	846.6	RMC	/	/	/	/	/	/

Handheld Mode

EUT Position	Frequency (MHz)	Test Mode	Max. Meas. Power (dBm)	Max. Rated Power (dBm)	10g SAR (W/kg), Limit=4.0W/kg			
					Scaled Factor	Meas. SAR	Scaled SAR	Plot
Handheld Front (0mm)	826.4	RMC	/	/	/	/	/	/
	836.6	RMC	23.39	23.5	1.026	0.075	0.08	30#
	846.6	RMC	/	/	/	/	/	/
Handheld Back (0mm)	826.4	RMC	/	/	/	/	/	/
	836.6	RMC	23.39	23.5	1.026	0.164	0.17	31#
	846.6	RMC	/	/	/	/	/	/
Handheld Left (0mm)	826.4	RMC	/	/	/	/	/	/
	836.6	RMC	23.39	23.5	1.026	0.166	0.18	32#
	846.6	RMC	/	/	/	/	/	/
Handheld Right (0mm)	826.4	RMC	/	/	/	/	/	/
	836.6	RMC	23.39	23.5	1.026	0.211	0.22	33#
	846.6	RMC	/	/	/	/	/	/
Handheld Top (0mm)	826.4	RMC	/	/	/	/	/	/
	836.6	RMC	23.39	23.5	1.026	0.642	0.66	34#
	846.6	RMC	/	/	/	/	/	/

Note:

1. When the SAR value is less than half of the limit, testing for other channels are optional.
2. The EUT transmit and receive through the same antenna while testing SAR.
3. The default test configuration is to measure SAR with an established radio link between the EUT and a communication test set using a 12.2 kbps RMC (reference measurement Channel) Configured in Test Loop Model.
4. KDB 941225 D01-Body SAR is not required for HSDPA/HSUPA/DC-HSDPA/HSPA+ when the maximum average output of each RF channel is less than ¼ dB higher than measured 12.2kbps RMC or the maximum SAR for 12.2kbps RMC is < 75% of SAR limit.
5. When SAR or MPE is not measured at the maximum power level allowed for production units, the results must be scaled to the maximum tune-up tolerance limit according to the power applied to the individual channels tested to determine compliance.

LTE Band 2:**Body Supported Mode**

EUT Position	Frequency (MHz)	Bandwidth (MHz)	Test Mode	Max. Meas. Power (dBm)	Max. Rated Power (dBm)	1g SAR (W/kg), Limit=1.6W/kg			
						Scaled Factor	Meas. SAR	Scaled SAR	Plot
Body Back (5mm)	1860	20	1RB	/	/	/	/	/	/
	1880	20	1RB	21.51	22.1	1.146	0.108	0.13	35#
	1900	20	1RB	/	/	/	/	/	/
	1880	20	50%RB	21.08	22.1	1.265	0.097	0.13	36#

Handheld Mode

EUT Position	Frequency (MHz)	Bandwidth (MHz)	Test Mode	Max. Meas. Power (dBm)	Max. Rated Power (dBm)	10g SAR (W/kg), Limit=4.0W/kg			
						Scaled Factor	Meas. SAR	Scaled SAR	Plot
Handheld Front (0mm)	1860	20	1RB	/	/	/	/	/	/
	1880	20	1RB	21.51	22.1	1.146	0.181	0.21	37#
	1900	20	1RB	/	/	/	/	/	/
	1880	20	50%RB	21.08	22.1	1.265	0.150	0.19	38#
Handheld Back (0mm)	1860	20	1RB	/	/	/	/	/	/
	1880	20	1RB	21.51	22.1	1.146	0.096	0.11	39#
	1900	20	1RB	/	/	/	/	/	/
	1880	20	50%RB	21.08	22.1	1.265	0.082	0.11	40#
Handheld Left (0mm)	1860	20	1RB	/	/	/	/	/	/
	1880	20	1RB	21.51	22.1	1.146	0.325	0.38	41#
	1900	20	1RB	/	/	/	/	/	/
	1880	20	50%RB	21.08	22.1	1.265	0.282	0.36	42#
Handheld Right (0mm)	1860	20	1RB	/	/	/	/	/	/
	1880	20	1RB	21.51	22.1	1.146	0.341	0.40	43#
	1900	20	1RB	/	/	/	/	/	/
	1880	20	50%RB	21.08	22.1	1.265	0.292	0.37	44#
Handheld Top (0mm)	1860	20	1RB	/	/	/	/	/	/
	1880	20	1RB	21.51	22.1	1.146	1.440	1.65	45#
	1900	20	1RB	/	/	/	/	/	/
	1880	20	50%RB	21.08	22.1	1.265	1.230	1.56	46#

LTE Band 4:**Body Supported Mode**

EUT Position	Frequency (MHz)	Bandwidth (MHz)	Test Mode	Max. Meas. Power (dBm)	Max. Rated Power (dBm)	1g SAR (W/kg), Limit=1.6W/kg			
						Scaled Factor	Meas. SAR	Scaled SAR	Plot
Body Back (5mm)	1720	20	1RB	/	/	/	/	/	/
	1732.5	20	1RB	22.62	22.7	1.019	0.066	0.07	47#
	1745	20	1RB	/	/	/	/	/	/
	1732.5	20	50%RB	21.90	22.7	1.202	0.061	0.08	48#

Handheld Mode

EUT Position	Frequency (MHz)	Bandwidth (MHz)	Test Mode	Max. Meas. Power (dBm)	Max. Rated Power (dBm)	10g SAR (W/kg), Limit=4.0W/kg			
						Scaled Factor	Meas. SAR	Scaled SAR	Plot
Handheld Front (0mm)	1720	20	1RB	/	/	/	/	/	/
	1732.5	20	1RB	22.62	22.7	1.019	0.035	0.04	49#
	1745	20	1RB	/	/	/	/	/	/
	1732.5	20	50%RB	21.90	22.7	1.202	0.035	0.05	50#
Handheld Back (0mm)	1720	20	1RB	/	/	/	/	/	/
	1732.5	20	1RB	22.62	22.7	1.019	0.058	0.06	51#
	1745	20	1RB	/	/	/	/	/	/
	1732.5	20	50%RB	21.90	22.7	1.202	0.055	0.07	52#
Handheld Left (0mm)	1720	20	1RB	/	/	/	/	/	/
	1732.5	20	1RB	22.62	22.7	1.019	0.080	0.09	53#
	1745	20	1RB	/	/	/	/	/	/
	1732.5	20	50%RB	21.90	22.7	1.202	0.074	0.09	54#
Handheld Right (0mm)	1720	20	1RB	/	/	/	/	/	/
	1732.5	20	1RB	22.62	22.7	1.019	0.142	0.15	55#
	1745	20	1RB	/	/	/	/	/	/
	1732.5	20	50%RB	21.90	22.7	1.202	0.129	0.16	56#
Handheld Top (0mm)	1720	20	1RB	/	/	/	/	/	/
	1732.5	20	1RB	22.62	22.7	1.019	0.807	0.83	57#
	1745	20	1RB	/	/	/	/	/	/
	1732.5	20	50%RB	21.90	22.7	1.202	0.718	0.87	58#

LTE Band 5:**Body Supported Mode**

EUT Position	Frequency (MHz)	Bandwidth (MHz)	Test Mode	Max. Meas. Power (dBm)	Max. Rated Power (dBm)	1g SAR (W/kg), Limit=1.6W/kg			
						Scaled Factor	Meas. SAR	Scaled SAR	Plot
Body Back (5mm)	829	10	1RB	/	/	/	/	/	/
	836.5	10	1RB	23.23	23.5	1.064	0.173	0.19	59#
	844	10	1RB	/	/	/	/	/	/
	836.5	10	50%RB	22.25	23.5	1.334	0.143	0.20	60#

Handheld Mode

EUT Position	Frequency (MHz)	Bandwidth (MHz)	Test Mode	Max. Meas. Power (dBm)	Max. Rated Power (dBm)	10g SAR (W/kg), Limit=4.0W/kg			
						Scaled Factor	Meas. SAR	Scaled SAR	Plot
Handheld Front (0mm)	829	10	1RB	/	/	/	/	/	/
	836.5	10	1RB	23.23	23.5	1.064	0.074	0.08	61#
	844	10	1RB	/	/	/	/	/	/
	836.5	10	50%RB	22.25	23.5	1.334	0.056	0.08	62#
Handheld Back (0mm)	829	10	1RB	/	/	/	/	/	/
	836.5	10	1RB	23.23	23.5	1.064	0.148	0.16	63#
	844	10	1RB	/	/	/	/	/	/
	836.5	10	50%RB	22.25	23.5	1.334	0.119	0.16	64#
Handheld Left (0mm)	829	10	1RB	/	/	/	/	/	/
	836.5	10	1RB	23.23	23.5	1.064	0.132	0.15	65#
	844	10	1RB	/	/	/	/	/	/
	836.5	10	50%RB	22.25	23.5	1.334	0.113	0.16	66#
Handheld Right (0mm)	829	10	1RB	/	/	/	/	/	/
	836.5	10	1RB	23.23	23.5	1.064	0.161	0.18	67#
	844	10	1RB	/	/	/	/	/	/
	836.5	10	50%RB	22.25	23.5	1.334	0.141	0.19	68#
Handheld Top (0mm)	829	10	1RB	/	/	/	/	/	/
	836.5	10	1RB	23.23	23.5	1.064	0.561	0.60	69#
	844	10	1RB	/	/	/	/	/	/
	836.5	10	50%RB	22.25	23.5	1.334	0.454	0.61	70#

LTE Band 7:**Body Supported Mode**

EUT Position	Frequency (MHz)	Bandwidth (MHz)	Test Mode	Max. Meas. Power (dBm)	Max. Rated Power (dBm)	1g SAR (W/kg), Limit=1.6W/kg			
						Scaled Factor	Meas. SAR	Scaled SAR	Plot
Body Back (5mm)	2510	20	1RB	/	/	/	/	/	/
	2535	20	1RB	22.06	22.3	1.057	0.298	0.32	71#
	2560	20	1RB	/	/	/	/	/	/
	2535	20	50%RB	21.13	22.3	1.309	0.173	0.23	72#

Handheld Mode

EUT Position	Frequency (MHz)	Bandwidth (MHz)	Test Mode	Max. Meas. Power (dBm)	Max. Rated Power (dBm)	10g SAR (W/kg), Limit=4.0W/kg			
						Scaled Factor	Meas. SAR	Scaled SAR	Plot
Handheld Front (0mm)	2510	20	1RB	/	/	/	/	/	/
	2535	20	1RB	22.06	22.3	1.057	0.117	0.13	73#
	2560	20	1RB	/	/	/	/	/	/
	2535	20	50%RB	21.13	22.3	1.309	0.093	0.13	74#
Handheld Back (0mm)	2510	20	1RB	/	/	/	/	/	/
	2535	20	1RB	22.06	22.3	1.057	0.146	0.16	75#
	2560	20	1RB	/	/	/	/	/	/
	2535	20	50%RB	21.13	22.3	1.309	0.148	0.20	76#
Handheld Left (0mm)	2510	20	1RB	/	/	/	/	/	/
	2535	20	1RB	22.06	22.3	1.057	0.472	0.50	77#
	2560	20	1RB	/	/	/	/	/	/
	2535	20	50%RB	21.13	22.3	1.309	0.368	0.49	78#
Handheld Right (0mm)	2510	20	1RB	/	/	/	/	/	/
	2535	20	1RB	22.06	22.3	1.057	0.344	0.37	79#
	2560	20	1RB	/	/	/	/	/	/
	2535	20	50%RB	21.13	22.3	1.309	0.287	0.38	80#
Handheld Top (0mm)	2510	20	1RB	/	/	/	/	/	/
	2535	20	1RB	22.06	22.3	1.057	1.630	1.73	81#
	2560	20	1RB	/	/	/	/	/	/
	2535	20	50%RB	21.13	22.3	1.309	0.970	1.27	82#

LTE Band 40 Lower:**Body Supported Mode**

EUT Position	Frequency (MHz)	Bandwidth (MHz)	Test Mode	Max. Meas. Power (dBm)	Max. Rated Power (dBm)	1g SAR (W/kg), Limit=1.6W/kg			
						Scaled Factor	Meas. SAR	Scaled SAR	Plot
Body Back (5mm)	/	/	/	/	/	/	/	/	/
	2310	10	1RB	22.79	23.0	1.050	0.124	0.14	83#
	/	/	/	/	/	/	/	/	/
	2310	10	50%RB	21.93	23.0	1.279	0.094	0.13	84#

Handheld Mode

EUT Position	Frequency (MHz)	Bandwidth (MHz)	Test Mode	Max. Meas. Power (dBm)	Max. Rated Power (dBm)	10g SAR (W/kg), Limit=4.0W/kg			
						Scaled Factor	Meas. SAR	Scaled SAR	Plot
Handheld Front (0mm)	/	/	/	/	/	/	/	/	/
	2310	10	1RB	22.79	23.0	1.050	0.068	0.08	85#
	/	/	/	/	/	/	/	/	/
	2310	10	50%RB	21.93	23.0	1.279	0.047	0.07	86#
Handheld Back (0mm)	/	/	/	/	/	/	/	/	/
	2310	10	1RB	22.79	23.0	1.050	0.155	0.17	87#
	/	/	/	/	/	/	/	/	/
	2310	10	50%RB	21.93	23.0	1.279	0.120	0.16	88#
Handheld Left (0mm)	/	/	/	/	/	/	/	/	/
	2310	10	1RB	22.79	23.0	1.050	0.140	0.15	89#
	/	/	/	/	/	/	/	/	/
	2310	10	50%RB	21.93	23.0	1.279	0.108	0.14	90#
Handheld Right (0mm)	/	/	/	/	/	/	/	/	/
	2310	10	1RB	22.79	23.0	1.050	0.273	0.29	91#
	/	/	/	/	/	/	/	/	/
	2310	10	50%RB	21.93	23.0	1.279	0.198	0.26	92#
Handheld Top (0mm)	/	/	/	/	/	/	/	/	/
	2310	10	1RB	22.79	23.0	1.050	0.509	0.54	93#
	/	/	/	/	/	/	/	/	/
	2310	10	50%RB	21.93	23.0	1.279	0.387	0.50	94#

Note: We used duty cycle is 29.99% (1:3.33) for LTE Band 40 SAR test, that is from radio report.

LTE Band 40 Upper:**Body Supported Mode**

EUT Position	Frequency (MHz)	Bandwidth (MHz)	Test Mode	Max. Meas. Power (dBm)	Max. Rated Power (dBm)	1g SAR (W/kg), Limit=1.6W/kg			
						Scaled Factor	Meas. SAR	Scaled SAR	Plot
Body Back (5mm)	/	/	/	/	/	/	/	/	/
	2355	10	1RB	23.12	23.2	1.019	0.096	0.10	95#
	/	/	/	/	/	/	/	/	/
	2355	10	50%RB	22.57	23.2	1.156	0.081	0.10	96#

Handheld Mode

EUT Position	Frequency (MHz)	Bandwidth (MHz)	Test Mode	Max. Meas. Power (dBm)	Max. Rated Power (dBm)	10g SAR (W/kg), Limit=4.0W/kg			
						Scaled Factor	Meas. SAR	Scaled SAR	Plot
Handheld Front (0mm)	/	/	/	/	/	/	/	/	/
	2355	10	1RB	23.12	23.2	1.019	0.065	0.07	97#
	/	/	/	/	/	/	/	/	/
	2355	10	50%RB	22.57	23.2	1.156	0.051	0.06	98#
Handheld Back (0mm)	/	/	/	/	/	/	/	/	/
	2355	10	1RB	23.12	23.2	1.019	0.126	0.13	99#
	/	/	/	/	/	/	/	/	/
	2355	10	50%RB	22.57	23.2	1.156	0.098	0.12	100#
Handheld Left (0mm)	/	/	/	/	/	/	/	/	/
	2355	10	1RB	23.12	23.2	1.019	0.154	0.16	101#
	/	/	/	/	/	/	/	/	/
	2355	10	50%RB	22.57	23.2	1.156	0.121	0.14	102#
Handheld Right (0mm)	/	/	/	/	/	/	/	/	/
	2355	10	1RB	23.12	23.2	1.019	0.248	0.26	103#
	/	/	/	/	/	/	/	/	/
	2355	10	50%RB	22.57	23.2	1.156	0.212	0.25	104#
Handheld Top (0mm)	/	/	/	/	/	/	/	/	/
	2355	10	1RB	23.12	23.2	1.019	0.502	0.52	105#
	/	/	/	/	/	/	/	/	/
	2355	10	50%RB	22.57	23.2	1.156	0.396	0.46	106#

Note: We used duty cycle is 29.99% (1:3.33) for LTE Band 40 SAR test, that is from radio report.

LTE Band 41&38:**Body Supported Mode**

EUT Position	Frequency (MHz)	Bandwidth (MHz)	Test Mode	Max. Meas. Power (dBm)	Max. Rated Power (dBm)	1g SAR (W/kg), Limit=1.6W/kg			
						Scaled Factor	Meas. SAR	Scaled SAR	Plot
Body Back (5mm)	2545	20	1RB	/	/	/	/	/	/
	2570	20	1RB	/	/	/	/	/	/
	2595	20	1RB	22.67	23.0	1.079	0.159	0.18	107#
	2645	20	1RB	/	/	/	/	/	/
	2595	20	50%RB	21.78	23.0	1.324	0.130	0.18	108#

Handheld Mode

EUT Position	Frequency (MHz)	Bandwidth (MHz)	Test Mode	Max. Meas. Power (dBm)	Max. Rated Power (dBm)	10g SAR (W/kg), Limit=4.0W/kg			
						Scaled Factor	Meas. SAR	Scaled SAR	Plot
Handheld Front (0mm)	2545	20	1RB	/	/	/	/	/	/
	2570	20	1RB	/	/	/	/	/	/
	2595	20	1RB	22.67	23.0	1.079	0.055	0.06	109#
	2645	20	1RB	/	/	/	/	/	/
	2595	20	50%RB	21.78	23.0	1.324	0.043	0.06	110#
Handheld Back (0mm)	2545	20	1RB	/	/	/	/	/	/
	2570	20	1RB	/	/	/	/	/	/
	2595	20	1RB	22.67	23.0	1.079	0.158	0.18	111#
	2645	20	1RB	/	/	/	/	/	/
	2595	20	50%RB	21.78	23.0	1.324	0.092	0.13	112#
Handheld Left (0mm)	2545	20	1RB	/	/	/	/	/	/
	2570	20	1RB	/	/	/	/	/	/
	2595	20	1RB	22.67	23.0	1.079	0.103	0.12	113#
	2645	20	1RB	/	/	/	/	/	/
	2595	20	50%RB	21.78	23.0	1.324	0.074	0.10	114#
Handheld Right (0mm)	2545	20	1RB	/	/	/	/	/	/
	2570	20	1RB	/	/	/	/	/	/
	2595	20	1RB	22.67	23.0	1.079	0.073	0.08	115#
	2645	20	1RB	/	/	/	/	/	/
	2595	20	50%RB	21.78	23.0	1.324	0.065	0.09	116#
Handheld Top (0mm)	2545	20	1RB	/	/	/	/	/	/
	2570	20	1RB	/	/	/	/	/	/
	2595	20	1RB	22.67	23.0	1.079	0.422	0.46	117#
	2645	20	1RB	/	/	/	/	/	/
	2595	20	50%RB	21.78	23.0	1.324	0.337	0.45	118#

Note:

1. The E-UTRA Operating Band 38 is a subset of band 41, and they are same in modulation type and rated output power, therefore, they were considered as one frequency band during SAR measurement.

2. The frequency range of LTE Band 41 is 2535~2655MHz. Per KDB 447498 D01, according to the following formula Calculate N_c is 4.

KDB procedures, the following should be applied to determine the number of required test channels. The test channels should be evenly spread across the transmission frequency band of each wireless mode.¹⁴

$$N_c = \text{Round} \left\{ \left[100 \left(\frac{f_{\text{high}} - f_{\text{low}}}{f_c} \right) \right]^{0.5} \times (f_c / 100)^{0.2} \right\},$$

where

- N_c is the number of test channels, rounded to the nearest integer,
- f_{high} and f_{low} are the highest and lowest channel frequencies within the transmission band,
- f_c is the mid-band channel frequency,
- all frequencies are in MHz.

3. LTE Band 41 SAR tested were performed using Power Class 3

Note:

1. SAR for LTE band exposure configurations is measured according to the procedures of KDB 941225 D05 SAR for LTE Devices v02.
2. KDB941225D05- Start with the largest channel bandwidth and measure SAR for QPSK with 1 RB allocation, using the RB offset and required test channel combination with the highest maximum output power among RB offset the upper edge, middle and lower edge of each required test channel.
3. When the SAR value is less than half of the limit, testing for other channels are optional.
4. Worst case SAR for 50% RB allocation is selected to be tested.
5. KDB941225D05- For QPSK with 100% RB allocation, SAR is not required when the highest maximum output power for 100 % RB allocation is less than the highest maximum output power in 50% and 1 RB allocations and the highest reported SAR for 1 RB and 50% RB allocation are ≤ 0.8 W/kg.
6. KDB941225D05-For QPSK with 100% RB allocation, when the reported SAR measured for the Highest output power channel is < 1.45 W/kg, tests for the remaining required test channels are optional.
7. KDB941225D05- other channel bandwidths SAR test is required when the highest maximum output power of a configuration requiring testing in the smaller channel bandwidth is $> \frac{1}{2}$ dB higher than the equivalent channel configurations in the largest channel bandwidth configuration or the reported SAR of a configuration for the largest channel bandwidth is > 1.45 W/kg.
8. KDB941225D05-SAR for higher order modulation is required only when the highest maximum output power for the configuration in the higher order modulation is $> \frac{1}{2}$ dB higher than the same configuration in QPSK or when the reported SAR for the QPSK configuration is > 1.45 W/kg.

**Wi-Fi 2.4G:
Body Supported Mode**

EUT Position	Frequency (MHz)	Test Mode	Max. Meas. Power (dBm)	Max. Rated Power (dBm)	1g SAR (W/kg), Limit=1.6W/kg				
					Scaled Factor	Duty cycle Factor	Meas. SAR	Scaled SAR	Plot
Body Back (5mm)	2412	802.11b	/	/	/	/	/	/	/
	2442	802.11b	15.42	15.5	1.019	1.000	0.047	0.05	119#
	2472	802.11b	/	/	/	/	/	/	/

Handheld Mode

EUT Position	Frequency (MHz)	Test Mode	Max. Meas. Power (dBm)	Max. Rated Power (dBm)	10g SAR (W/kg), Limit=4.0W/kg				
					Scaled Factor	Duty cycle Factor	Meas. SAR	Scaled SAR	Plot
Handheld Front (0mm)	2412	802.11b	/	/	/	/	/	/	/
	2442	802.11b	15.42	15.5	1.019	1.000	0.015	0.02	120#
	2472	802.11b	/	/	/	/	/	/	/
Handheld Back (0mm)	2412	802.11b	/	/	/	/	/	/	/
	2442	802.11b	15.42	15.5	1.019	1.000	0.077	0.08	121#
	2472	802.11b	/	/	/	/	/	/	/
Handheld Right (0mm)	2412	802.11b	/	/	/	/	/	/	/
	2442	802.11b	15.42	15.5	1.019	1.000	0.113	0.12	122#
	2472	802.11b	/	/	/	/	/	/	/

Note:

1. When the SAR value is less than half of the limit, testing for other channels are optional.
2. When SAR or MPE is not measured at the maximum power level allowed for production units, the results must be scaled to the maximum tune-up tolerance limit according to the power applied to the individual channels tested to determine compliance.
3. KDB 248227 D01-SAR measurement is not required for 2.4 GHz OFDM(801.11g/n20/n40) when the highest reported SAR for DSSS(802.11b) is ≤ 1.2 W/kg, and the output power for DSSS is not less than that for OFDM.

**Wi-Fi 5.2G:
Body Supported Mode**

EUT Position	Frequency (MHz)	Test Mode	Max. Meas. Power (dBm)	Max. Rated Power (dBm)	1g SAR (W/kg), Limit=1.6W/kg				
					Scaled Factor	Duty cycle Factor	Meas. SAR	Scaled SAR	Plot
Body Back (5mm)	5180	802.11a	/	/	/	/	/	/	/
	5200	802.11a	9.99	10.1	1.026	1.000	0.187	0.20	123#
	5240	802.11a	/	/	/	/	/	/	/

Handheld Mode

EUT Position	Frequency (MHz)	Test Mode	Max. Meas. Power (dBm)	Max. Rated Power (dBm)	10g SAR (W/kg), Limit=4.0W/kg				
					Scaled Factor	Duty cycle Factor	Meas. SAR	Scaled SAR	Plot
Handheld Front (0mm)	5180	802.11a	/	/	/	/	/	/	/
	5200	802.11a	9.99	10.1	1.026	1.000	0.03	0.04	124#
	5240	802.11a	/	/	/	/	/	/	/
Handheld Back (0mm)	5180	802.11a	/	/	/	/	/	/	/
	5200	802.11a	9.99	10.1	1.026	1.000	0.140	0.15	125#
	5240	802.11a	/	/	/	/	/	/	/
Handheld Right (0mm)	5180	802.11a	/	/	/	/	/	/	/
	5200	802.11a	9.99	10.1	1.026	1.000	0.391	0.41	126#
	5240	802.11a	/	/	/	/	/	/	/

**Wi-Fi 5.3G:
Body Supported Mode**

EUT Position	Frequency (MHz)	Test Mode	Max. Meas. Power (dBm)	Max. Rated Power (dBm)	1g SAR (W/kg), Limit=1.6W/kg				
					Scaled Factor	Duty cycle Factor	Meas. SAR	Scaled SAR	Plot
Body Back (5mm)	5260	802.11a	/	/	/	/	/	/	/
	5280	802.11a	9.56	9.6	1.009	1.000	0.172	0.18	127#
	5320	802.11a	/	/	/	/	/	/	/

Handheld Mode

EUT Position	Frequency (MHz)	Test Mode	Max. Meas. Power (dBm)	Max. Rated Power (dBm)	10g SAR (W/kg), Limit=4.0W/kg				
					Scaled Factor	Duty cycle Factor	Meas. SAR	Scaled SAR	Plot
Handheld Front (0mm)	5260	802.11a	/	/	/	/	/	/	/
	5280	802.11a	9.56	9.6	1.009	1.000	0.029	0.03	128#
	5320	802.11a	/	/	/	/	/	/	/
Handheld Back (0mm)	5260	802.11a	/	/	/	/	/	/	/
	5280	802.11a	9.56	9.6	1.009	1.000	0.126	0.13	129#
	5320	802.11a	/	/	/	/	/	/	/
Handheld Right (0mm)	5260	802.11a	/	/	/	/	/	/	/
	5280	802.11a	9.56	9.6	1.009	1.000	0.373	0.38	130#
	5320	802.11a	/	/	/	/	/	/	/

**Wi-Fi 5.6G:
Body Supported Mode**

EUT Position	Frequency (MHz)	Test Mode	Max. Meas. Power (dBm)	Max. Rated Power (dBm)	1g SAR (W/kg), Limit=1.6W/kg				
					Scaled Factor	Duty cycle Factor	Meas. SAR	Scaled SAR	Plot
Body Back (5mm)	5500	802.11a	/	/	/	/	/	/	/
	5580	802.11a	/	/	/	/	/	/	/
	5700	802.11a	12.12	12.2	1.019	1.000	0.127	0.13	131#
	5720	802.11a	/	/	/	/	/	/	/

Handheld Mode

EUT Position	Frequency (MHz)	Test Mode	Max. Meas. Power (dBm)	Max. Rated Power (dBm)	10g SAR (W/kg), Limit=4.0W/kg				
					Scaled Factor	Duty cycle Factor	Meas. SAR	Scaled SAR	Plot
Handheld Front (0mm)	5500	802.11a	/	/	/	/	/	/	/
	5580	802.11a	/	/	/	/	/	/	/
	5700	802.11a	12.12	12.2	1.019	1.000	0.034	0.04	132#
	5720	802.11a	/	/	/	/	/	/	/
Handheld Back (0mm)	5500	802.11a	/	/	/	/	/	/	/
	5580	802.11a	/	/	/	/	/	/	/
	5700	802.11a	12.12	12.2	1.019	1.000	0.111	0.12	133#
	5720	802.11a	/	/	/	/	/	/	/
Handheld Right (0mm)	5500	802.11a	/	/	/	/	/	/	/
	5580	802.11a	/	/	/	/	/	/	/
	5700	802.11a	12.12	12.2	1.019	1.000	0.257	0.27	134#
	5720	802.11a	/	/	/	/	/	/	/

Wi-Fi 5.8G:**Body Supported Mode**

EUT Position	Frequency (MHz)	Test Mode	Max. Meas. Power (dBm)	Max. Rated Power (dBm)	1g SAR (W/kg), Limit=1.6W/kg				
					Scaled Factor	Duty cycle Factor	Meas. SAR	Scaled SAR	Plot
Body Back (5mm)	5745	802.11a	12.05	12.3	1.059	1.000	0.131	0.14	135#
	5785	802.11a	/	/	/	/	/	/	/
	5825	802.11a	/	/	/	/	/	/	/

Handheld Mode

EUT Position	Frequency (MHz)	Test Mode	Max. Meas. Power (dBm)	Max. Rated Power (dBm)	10g SAR (W/kg), Limit=4.0W/kg				
					Scaled Factor	Duty cycle Factor	Meas. SAR	Scaled SAR	Plot
Handheld Front (0mm)	5745	802.11a	12.05	12.3	1.059	1.000	0.018	0.02	136#
	5785	802.11a	/	/	/	/	/	/	/
	5825	802.11a	/	/	/	/	/	/	/
Handheld Back (0mm)	5745	802.11a	12.05	12.3	1.059	1.000	0.124	0.14	137#
	5785	802.11a	/	/	/	/	/	/	/
	5825	802.11a	/	/	/	/	/	/	/
Handheld Right (0mm)	5745	802.11a	12.05	12.3	1.059	1.000	0.292	0.31	138#
	5785	802.11a	/	/	/	/	/	/	/
	5825	802.11a	/	/	/	/	/	/	/

Note:

1. When the SAR value is less than half of the limit, testing for other channels are optional.
2. When SAR or MPE is not measured at the maximum power level allowed for production units, the results must be scaled to the maximum tune-up tolerance limit according to the power applied to the individual channels tested to determine compliance

9. SAR Measurement Variability

In accordance with published RF Exposure KDB procedure 865664 D01 SAR measurement 100 MHz to 6 GHz v01. These additional measurements are repeated after the completion of all measurements requiring the same head or body tissue-equivalent medium in a frequency band. The test device should be returned to ambient conditions (normal room temperature) with the battery fully charged before it is re-mounted on the device holder for the repeated measurement(s) to minimize any unexpected variations in the repeated results

- 1) Repeated measurement is not required when the original highest measured SAR is < 0.80 W/kg; steps 2) through 4) do not apply.
- 2) When the original highest measured SAR is ≥ 0.80 W/kg, repeat that measurement once.
- 3) Perform a second repeated measurement only if the ratio of largest to smallest SAR for the original and first repeated measurements is > 1.20 or when the original or repeated measurement is ≥ 1.45 W/kg (~ 10% from the 1-g SAR limit).
- 4) Perform a third repeated measurement only if the original, first or second repeated measurement is ≥ 1.5 W/kg and the ratio of largest to smallest SAR for the original, first and second repeated measurements is > 1.20 .

Note: The same procedures should be adapted for measurements according to extremity and occupational exposure limits by applying a factor of 2.5 for extremity exposure and a factor of 5 for occupational exposure to the corresponding SAR thresholds.

The Highest Measured SAR Configuration in Each Frequency Band

Body

SAR probe calibration point	Frequency Band	Freq.(MHz)	EUT Position	Meas. SAR (W/kg)		Largest to Smallest SAR Ratio
				Original	Repeated	
1750 MHz (1650-1850MHz)	WCDWA Band 4	1732.6	Body Back	0.940	0.928	1.01

Handheld

SAR probe calibration point	Frequency Band	Freq.(MHz)	EUT Position	Meas. SAR (W/kg)		Largest to Smallest SAR Ratio
				Original	Repeated	
1900 MHz (1850-2000MHz)	WCDWA Band 2	1907.6	Handheld Top	2.26	2.18	1.04

Note:

1. Second Repeated Measurement is not required since the ratio of the largest to smallest SAR for the original and first repeated measurement is not > 1.20 .
2. The measured SAR results **do not** have to be scaled to the maximum tune-up tolerance to determine if repeated measurements are required.
3. SAR measurement variability must be assessed for each frequency band, which is determined by the **SAR probe calibration point and tissue-equivalent medium** used for the device measurements.

10. SAR SIMULTANEOUS TRANSMISSION DESCRIPTION

Simultaneous Transmission:

Description of Simultaneous Transmit Capabilities		
Transmitter Combination	Simultaneous?	Hotspot?
WWAN(GSM/WCDMA/LTE) + Bluetooth	√	×
WWAN(GSM/WCDMA/LTE) + WLAN 2.4G/5G	√	×
WLAN + Bluetooth	×	×

Simultaneous SAR test exclusion considerations:

Body:

Mode(SAR1+SAR2)	Position	Reported SAR(W/kg)		Σ SAR < 1.6W/kg
		SAR1	SAR2	
WWAN + Bluetooth	Body Back	0.97	0.24	1.21
WWAN + WLAN 2.4G		0.97	0.05	1.02
WWAN + WLAN 5G		0.97	0.20	1.17

Conclusion:

Sum of SAR: Σ SAR \leq 1.6 W/kg therefore simultaneous transmission SAR with Volume Scans is **not required**.

Handheld:

Mode(SAR1+SAR2)	Position	Reported SAR(W/kg)		Σ SAR < 4.0W/kg
		SAR1	SAR2	
WWAN + Bluetooth	Handheld	2.37	0.10	2.47
WWAN + WLAN 2.4G		2.37	0.12	2.49
WWAN + WLAN 5G		2.37	0.41	2.78

Note:

For the EIRP of NFC is 0.0012mW, per KDB447498 D01 clause 4.3, the estimated SAR is so lower, so the NFC almost have no influence on the results of simultaneous transmission.

Conclusion:

Sum of SAR: Σ SAR \leq 4.0 W/kg for 10 g Extremity SAR, therefore simultaneous transmission SAR with Volume Scans is **not required**.

11. SAR Plots

Please Refer to the Attachment.

APPENDIX A MEASUREMENT UNCERTAINTY

The uncertainty budget has been determined for the measurement system and is given in the following Table.

Measurement uncertainty evaluation for IEEE1528-2013 SAR test

Source of uncertainty	Tolerance/ uncertainty ± %	Probability distribution	Divisor	ci (1 g)	ci (10 g)	Standard uncertainty ± %, (1 g)	Standard uncertainty ± %, (10 g)
Measurement system							
Probe calibration	6.55	N	1	1	1	6.3	6.3
Axial Isotropy	4.7	R	$\sqrt{3}$	1	1	2.7	2.7
Hemispherical Isotropy	9.6	R	$\sqrt{3}$	0	0	0.0	0.0
Boundary effect	1.0	R	$\sqrt{3}$	1	1	0.6	0.6
Linearity	4.7	R	$\sqrt{3}$	1	1	2.7	2.7
Detection limits	1.0	R	$\sqrt{3}$	1	1	0.6	0.6
Readout electronics	0.3	N	1	1	1	0.3	0.3
Response time	0.0	R	$\sqrt{3}$	1	1	0.0	0.0
Integration time	0.0	R	$\sqrt{3}$	1	1	0.0	0.0
RF ambient conditions – noise	1.0	R	$\sqrt{3}$	1	1	0.6	0.6
RF ambient conditions– reflections	1.0	R	$\sqrt{3}$	1	1	0.6	0.6
Probe positioner mech. Restrictions	0.8	R	$\sqrt{3}$	1	1	0.5	0.5
Probe positioning with respect to phantom shell	6.7	R	$\sqrt{3}$	1	1	3.9	3.9
Post-processing	2.0	R	$\sqrt{3}$	1	1	1.2	1.2
Test sample related							
Test sample positioning	2.8	N	1	1	1	2.8	2.8
Device holder uncertainty	6.3	N	1	1	1	6.3	6.3
Drift of output power	5.0	R	$\sqrt{3}$	1	1	2.9	2.9
Phantom and set-up							
Phantom uncertainty (shape and thickness tolerances)	4.0	R	$\sqrt{3}$	1	1	2.3	2.3
Liquid conductivity target)	5.0	R	$\sqrt{3}$	0.64	0.43	1.8	1.2
Liquid conductivity meas.)	2.5	N	1	0.64	0.43	1.6	1.1
Liquid permittivity target)	5.0	R	$\sqrt{3}$	0.6	0.49	1.7	1.4
Liquid permittivity meas.)	2.5	N	1	0.6	0.49	1.5	1.2
Combined standard uncertainty		RSS				12.2	12.0
Expanded uncertainty 95 % confidence interval)						24.1	23.7

Measurement uncertainty evaluation for IEC62209-1 SAR test

Source of uncertainty	Tolerance/uncertainty ± %	Probability distribution	Divisor	ci (1 g)	ci (10 g)	Standard uncertainty ± %, (1 g)	Standard uncertainty ± %, (10 g)
Measurement system							
Probe calibration	6.55	N	1	1	1	6.3	6.3
Axial Isotropy	4.7	R	$\sqrt{3}$	1	1	2.7	2.7
Hemispherical Isotropy	9.6	R	$\sqrt{3}$	0	0	0.0	0.0
Boundary effect	1.0	R	$\sqrt{3}$	1	1	0.6	0.6
Linearity	4.7	R	$\sqrt{3}$	1	1	2.7	2.7
Detection limits	1.0	R	$\sqrt{3}$	1	1	0.6	0.6
Readout electronics	0.3	N	1	1	1	0.3	0.3
Response time	0.0	R	$\sqrt{3}$	1	1	0.0	0.0
Integration time	0.0	R	$\sqrt{3}$	1	1	0.0	0.0
RF ambient conditions – noise	1.0	R	$\sqrt{3}$	1	1	0.6	0.6
Probe positioning with respect to phantom shell	6.7	R	$\sqrt{3}$	1	1	3.9	3.9
Probe positioner mech. Restrictions	0.8	R	$\sqrt{3}$	1	1	0.5	0.5
RF ambient conditions– reflections	1.0	R	$\sqrt{3}$	1	1	0.6	0.6
Post-processing	2.0	R	$\sqrt{3}$	1	1	1.2	1.2
Test sample related							
Test sample positioning	2.8	N	1	1	1	2.8	2.8
Device holder uncertainty	6.3	N	1	1	1	6.3	6.3
Drift of output power	5.0	R	$\sqrt{3}$	1	1	2.9	2.9
Phantom and set-up							
Phantom uncertainty (shape and thickness tolerances)	4.0	R	$\sqrt{3}$	1	1	2.3	2.3
Liquid conductivity target)	5.0	R	$\sqrt{3}$	0.64	0.43	1.8	1.2
Liquid conductivity meas.)	2.5	N	1	0.64	0.43	1.6	1.1
Liquid permittivity target)	5.0	R	$\sqrt{3}$	0.6	0.49	1.7	1.4
Liquid permittivity meas.)	2.5	N	1	0.6	0.49	1.5	1.2
Combined standard uncertainty		RSS				12.2	12.0
Expanded uncertainty 95 % confidence interval)						24.0	23.6

APPENDIX B EUT TEST POSITION PHOTOS

Please Refer to the Attachment.

APPENDIX C CALIBRATION CERTIFICATES

Please Refer to the Attachment.

******* END OF REPORT *******