



Applicable to CS20-1E project 4G antenna solution

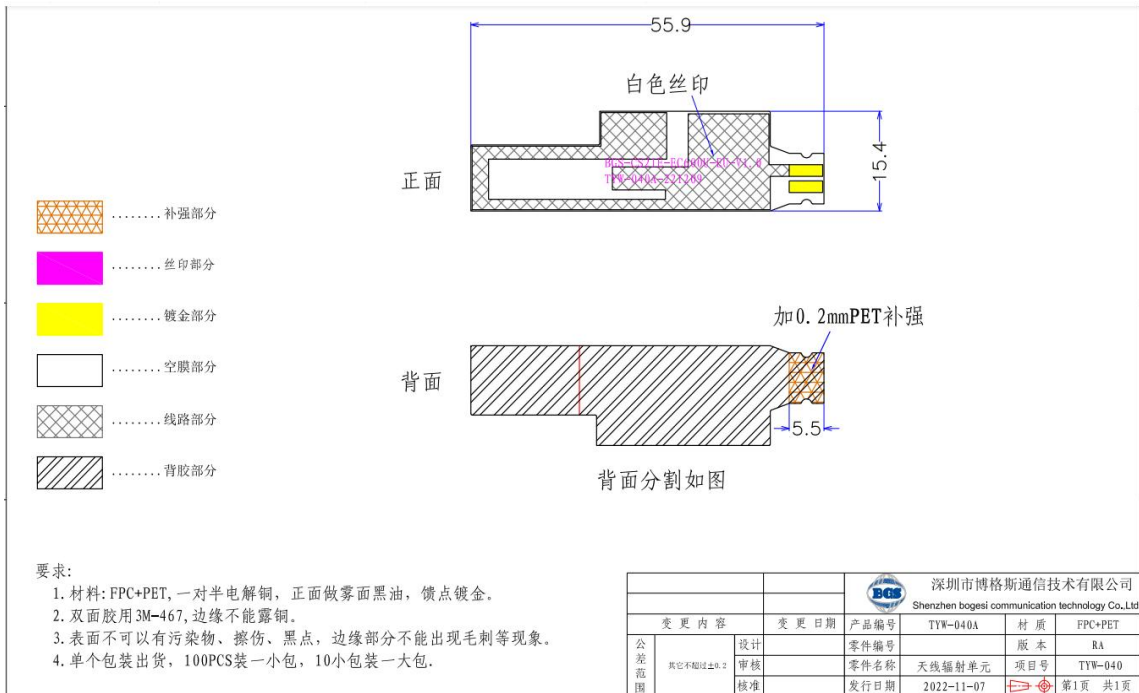
Electrical Specifications:

Frequency Band	4G	The Antenna Material	FPC
Nominal Impedance	50 Ω	Antenna Connection Mode	Touch
VSWR	≤ 5.0	Working Temperature	-40°C ~ +85°C
Peak Gain	700-960MHz: 1.06dBi	Keep The Temperature	+19°C ~ +23°C
	1700-2700MHz: 2.03dBi	Polarization	Linear Polarization

Test Conditions And Methods:

Test Instruments	Test Method	Test Result
7*4*3 microwave darkroom E5071B network analyzer comprehensive tester	1. Assemble the antenna to be tested on the prototype. 2. Put the prototype on the test fixture in a dark room, and conduct comprehensive test with it. Instrument/analyzer connection is established. 3. Test antenna passive data with test software.	Refer to the Test Report

Product drawings



Passive performance test parameters

Frequency (GHz)	0.7	0.96
VSWR	4.5	5.9
Frequency (GHz)	1.71	2.69
VSWR	1.62	3

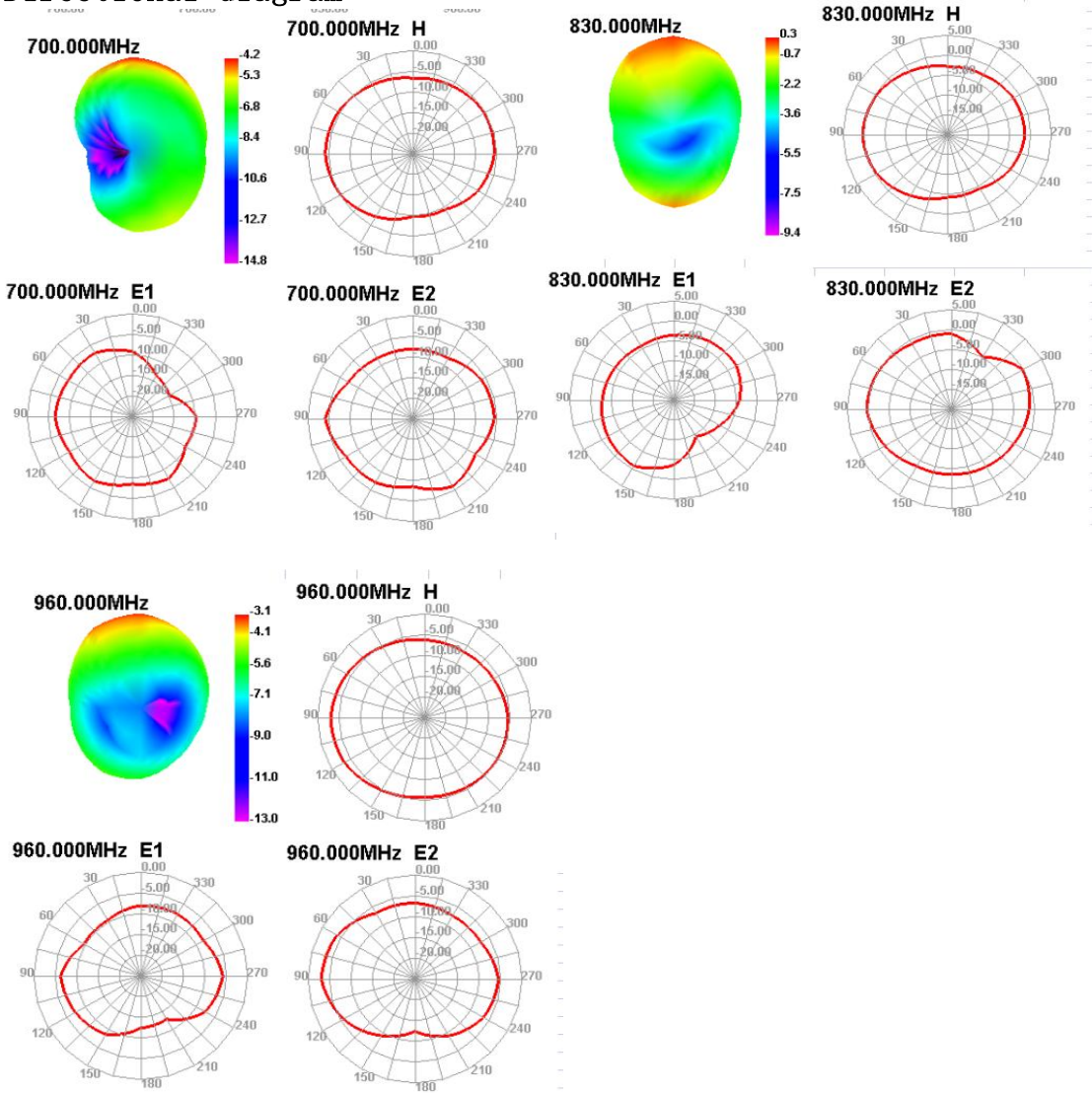


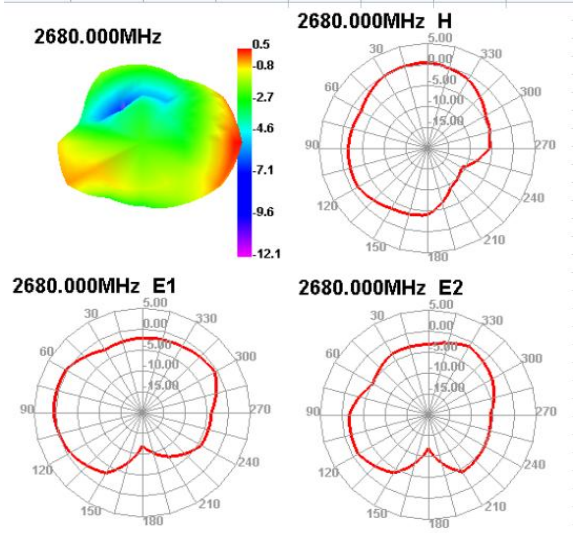
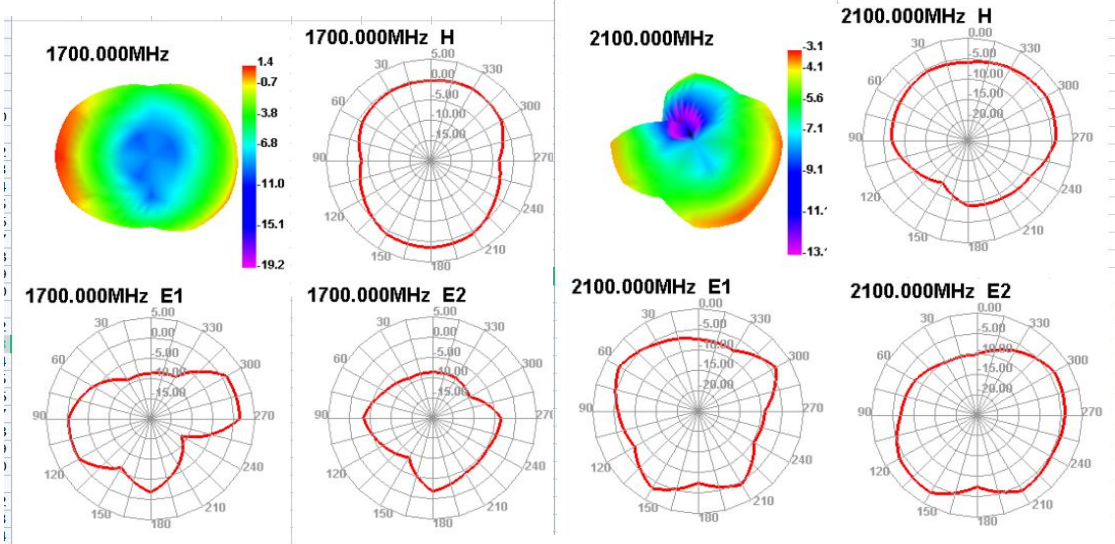
antenna passive data:

Freq (MHz)	Effi (%)	Gain (dBi)
700	21.05	-4.19
710	23.03	-2.87
720	25.29	-2.23
730	28.18	-1.14
740	27.87	-1.3
750	29.75	-0.46
760	31.66	-0.36
770	36.05	0.32
780	40.04	0.26
790	42.46	0.57
800	41.17	0.49
810	47.73	1.06
820	45.54	0.71
830	42.86	0.27
840	41.18	0.29
850	43.05	0.49
860	44.45	0.9
870	41.51	0.34
880	39.92	0.47
890	36.66	0.09
900	35.69	-0.36
910	38.58	-0.74
920	36.93	-0.95
930	34.18	-1.45
940	33.67	-1.89
950	31.19	-2.17
960	27.26	-3.12
1700	48.65	1.38
1720	48.01	1.24
1740	45.03	1.04
1760	43.81	1.22
1780	46.21	1.37
1800	44.25	0.36
1820	45.12	1.06
1840	46.23	1.32
1860	45.57	1.33
1880	43.83	1.36
1900	43.96	1.51
1920	44.85	1.52

1940	46.23	1.62
1960	46.89	1.74
1980	47.7	1.88
2000	47.97	2.03
2020	46.43	1.78
2040	42	0.2
2060	41.82	-1.04
2080	38.76	-2.33
2100	35.88	-3.1
2120	39.27	-2.46
2140	42.42	-1.81
2160	42.68	-1.1
2180	45.01	-0.06
2200	47.68	0.7
2220	49.37	1.24
2240	47.87	0.73
2260	46.04	0.3
2280	45.09	0.01
2300	43.29	-1.22
2320	45.71	-0.99
2340	44.04	-1.39
2360	38.25	-2.55
2380	41.95	-1.28
2400	42.79	-0.71
2420	45.28	-0.22
2440	45.76	-0.35
2460	44.08	-0.31
2480	46.16	0.57
2500	47.11	0.69
2520	45.26	0.19
2540	44.75	0.03
2560	46.64	0.07
2580	45.73	-0.04
2600	45.88	0.14
2620	44.63	-0.84
2640	48.7	-0.03
2660	53.69	0.6
2680	52.4	0.47
2700	56.16	0.93

Directional diagram





Test picture:

