

abingo

CERTIFICATE OF QUALITY

Product model: S8
 Product name: Sport bluetooth
 Execution standard number: QX4519.2017
 Inspection date: _____
 Inspection personnel: SS
 Inspection conclusion: Pass

How to distinguish between left and right

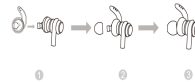


How do I choose the right size



*Wear a comfortable ear cap, depending on your ear size

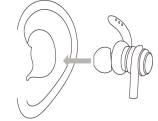
Equip your earplugs in the direction of the diagram



1 Choose the right ear hand and ear cup



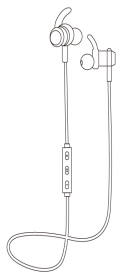
2 Put the headphones in the ear canal



3 Gently touch the ear sleeve to the cochlea



4 Rotate it to make it comfortable and reasonable



S8
Sport bluetooth
User Manual



Specifications

Bluetooth version:Bluetooth V4.2+EDR
 Support: A2DP v1.3/AVRCP v1.5/HFP v1.5
 Working distance:10M
 Working frequency:2.4-2.480GHZ
 Battery:3.7V/110mAh built-in rechargeable Li-on battery
 Charging voltage:DCSV
 Charging time:about 2 hours
 Working currency:≤20mA
 Standby currency: <2mA
 Working temperature:-10℃ to +50℃
 Play time:about 7 hours
 Talk time:about 7 hours
 Standby time:about 100 hours

Function Introduction

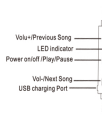
- 1.Power on:long press **||** for 2 seconds, voice prompts "Power on"
- 2.Power off:long press **||** for 2 seconds,voice prompts "Power off"
- 3.The headset can connect with 2 Bluetooth devices at the same time.

Pairing

- 1.Initial Pairing:Bluetooth headset will enter pairing mode automatically,voice prompts "ABINGOS8".Turn on Bluetooth function on device and select S2,no PIN code needed.Voice prompts "connected"when pairing successfully.
2. Re-Pairing:Long press **||** for about 2 seconds in power off mode,headset enter pairing mode when red and blue LED indicator lights flash quickly.
- 3.Bluetooth headset will pairing device which paired before automatically when power on.

Operating Guide

- Answer phone calls:Single press **||**
 Hang up phone calls:Single press **||**
 Re-dial last phone call:Double press **||**
 Play/Pause music:Single press **||**
 Volume +/-:Single press + / -
 Previous/Next song:Long press + / -



LED Indicator

- 1.Charging:Red light keeps on in charging mode,blue light on when fully charged.
- 2.Power on:Blue light flash for 1 time.
- 3.Pairing mode:Red and blue lights flashing alternately.
- 4.Paired mode:Blue light flash every 5 seconds.
- 5.Standby mode:Blue light flash every 10 seconds.
- 6.Play mode:Blue light flash every 10 seconds.
- 7.Power off:Red light keeps on for 1 seconds.

Notice

Please charge the Bluetooth headset when power prompts "Low Battery".

FCC Warning

Any Changes or modifications not expressly approved by the party responsible for compliance could void the user's authority to operate the equipment.
 This device complies with part 15 of the FCC Rules. Operation is subject to the following two conditions:
 (1) this device may not cause harmful interference, and
 (2) this device must accept any interference received, including interference that may cause undesired operation.
 This equipment has been tested and found to comply with the limits for a Class B digital device, pursuant to part 15 of the FCC Rules. These limits are designed to provide reasonable protection against harmful interference in a residential installation. This equipment generates, uses and can radiate radio frequency energy and, if not installed and used in accordance with the instructions, may cause harmful interference to radio communications. However, there is no guarantee that interference will not occur in a particular installation. If this equipment does cause harmful interference to radio or television reception, which can be determined by turning the equipment off and on, the user is encouraged to try to correct the interference by one or more of the following measures:
 —Reorient or relocate the receiving antenna.
 —Increase the separation between the equipment and receiver.
 —Connect the equipment into an outlet on a circuit different from that to which the receiver is connected.
 —Consult the dealer or an experienced radio/TV technician for help.
FCC Radiation Exposure Statement
 This equipment complies with FCC radiation exposure limits set forth for an uncontrolled environment.
 This transmitter must not be co-located or operating in conjunction with any other antenna or transmitter.