

P63L antenna test report

Antenna model: 6202

Manufacturer: Shenzhen cape deep communication technology co., LTD

Address: 2nd Floor, Building 1, Yulong Building, Longcheng Industrial Zone, No.440, Longguan Avenue, Longhua District, Shenzhen

Antenna test data

Frequency band	Channel	TRP	TIS	Frequency band	Channel	TRP	TIS
GSM 850	Low	25.2		WCDMA 1	Low	15.7	
	Mid	25.3			Mid	16.2	
	Hig	25.4	-103.1		Hig	16.8	-105
EGSM 900	Low	26.1		WCDMA 2	Low	16.1	
	Mid	26.3			Mid	16.2	
	Hig	26.4	-102.2		Hig	16.1	-104.8
DCS 1800	Low	24.2		WCDMA 4	Low	16.2	
	Mid	24.3			Mid	16.3	
	Hig	24.2	-102.1		Hig	16.1	-104.5
PCS 1900	Low	23.3		WCDMA 5	Low	17.2	
	Mid	23.2			Mid	17.1	
	Hig	23.2	-103.4		Hig	16.4	-105.1

Antenna test data

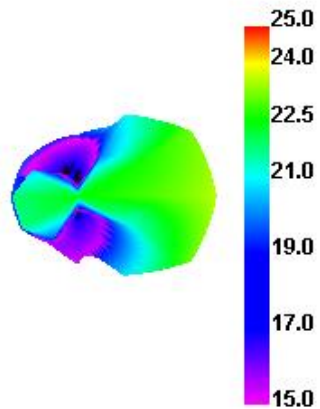
Frequency band2B	Channel	TRP	TIS	Frequency band	Channel	TRP	TIS
LTE B2	Low	16.1		LTE B71	Low	14.6	
	Mid	15.6			Mid	16.4	
	Hig	15.5	-92.1		Hig	16.1	-89.1
LTE B4	Low	16.2					
	Mid	15.4					
	Hig	15.7	-92				
LTE B12	Low	16.7					
	Mid	17.2					
	Hig	17.3	-89.3				
LTE B66	Low	15.8					
	Mid	15.6					
	Hig	15.5	-90.2				

Gain test data

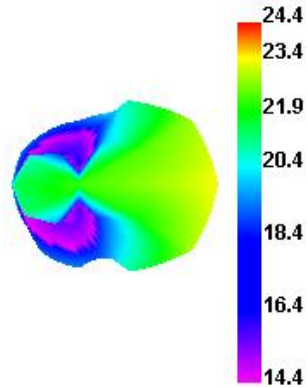
	GSM850	GSM900	DCS1800	PCS1900	W1	W2	W4	W5	LTE2
AVG Gain(dBi)	-1.53	-1.84	-2.02	-2.36	-2.07	-2.36	-2.11	-1.53	-2.36
	LTE4	LTE12	LTE66	LTE71	GPS	BT	WIFI2.4G	WIFI5G	
AVG Gain(dBi)	-2.11	-3.02	-2.11	-3.25	-1.54	-1.96	-1.96	0.23	

LTE2

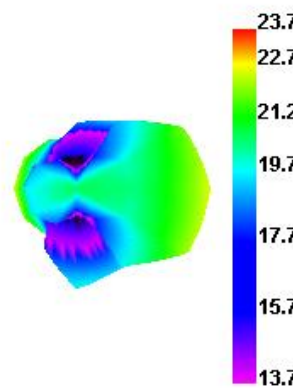
LTE2 18650 TRP



LTE2 18900 TRP

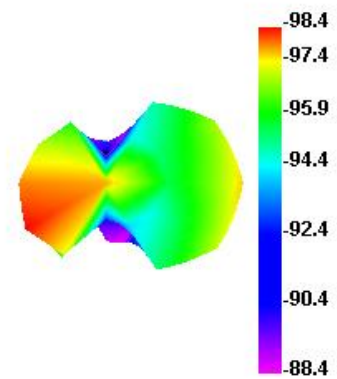


LTE2 19150 TRP



TIS

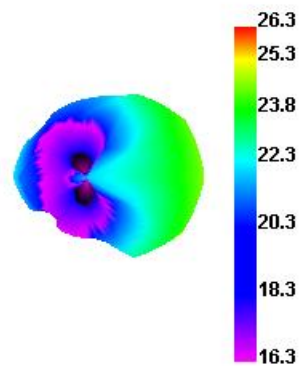
LTE2 1150 TIS



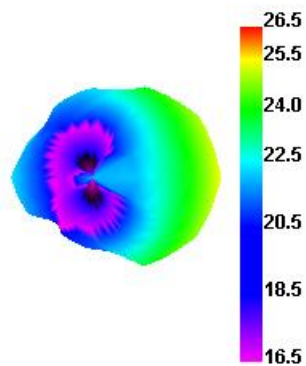
LTE4

TIS

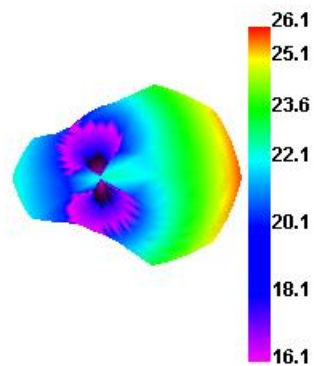
LTE4 20000 TRP



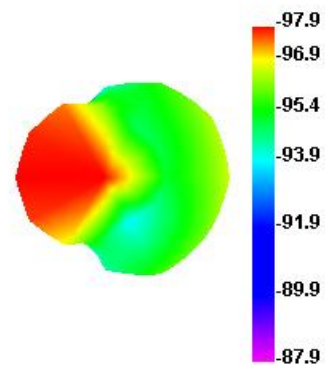
LTE4 20175 TRP



LTE4 20350 TRP



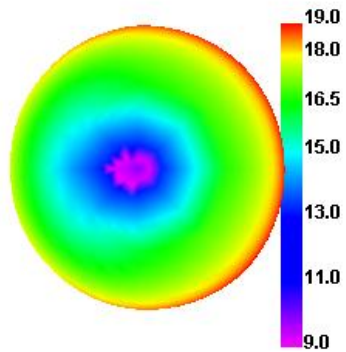
LTE4 2350 TIS



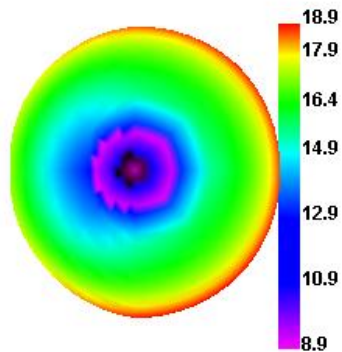
LTE12

TIS

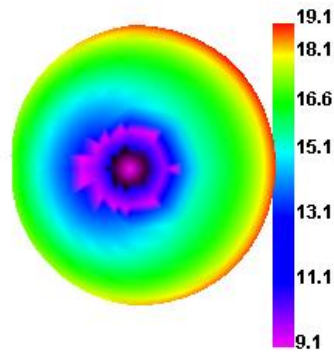
LTE12 23060 TRP



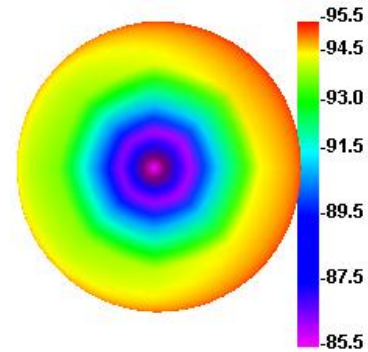
LTE12 23095 TRP



LTE12 23130 TRP



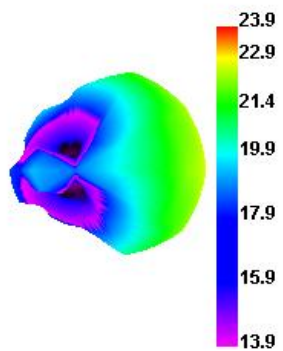
LTE12 5130 TIS



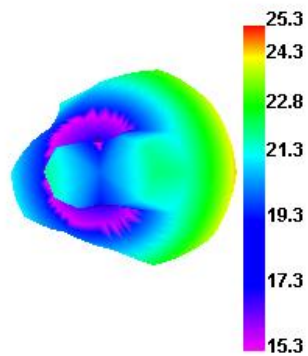
LTE66

TIS

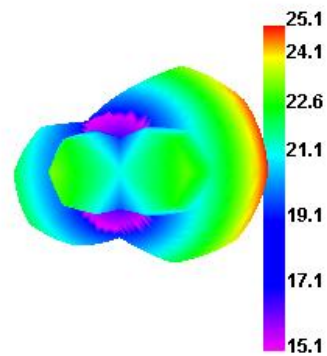
LTE66 132022 TRP



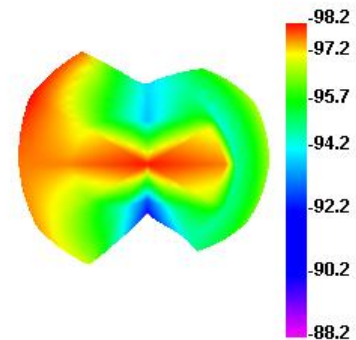
LTE66 132322 TRP



LTE66 132622 TRP



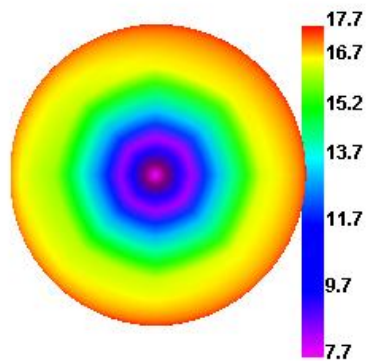
LTE66 67086 TIS



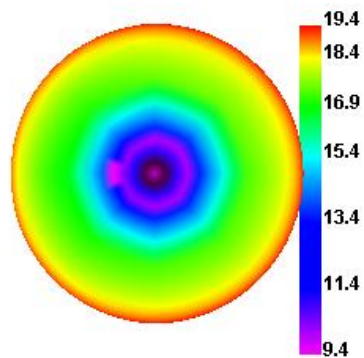
LTE71

TIS

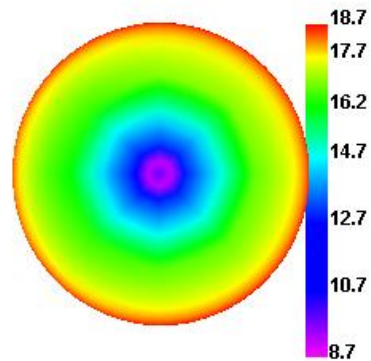
LTE71 133172 TRP



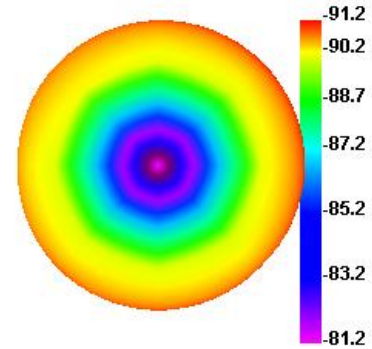
LTE71 133297 TRP



LTE71 133422 TRP



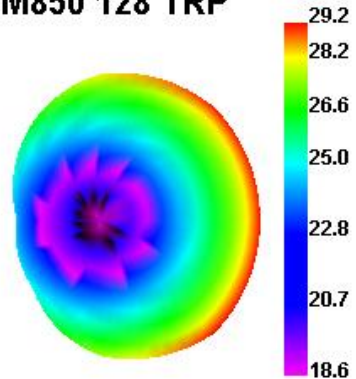
LTE71 68886 TIS



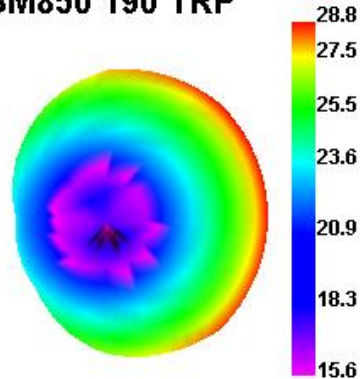
GSM850

TIS

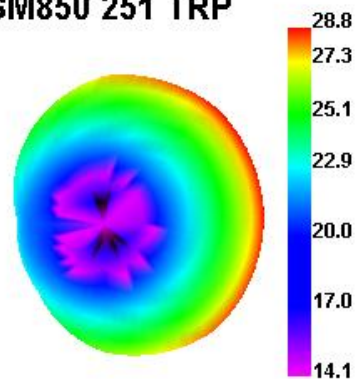
GSM850 128 TRP



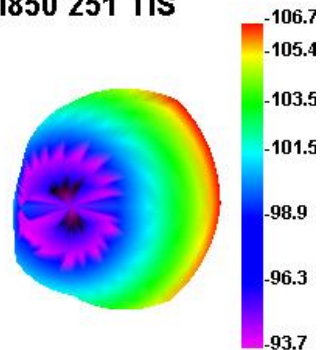
GSM850 190 TRP



GSM850 251 TRP



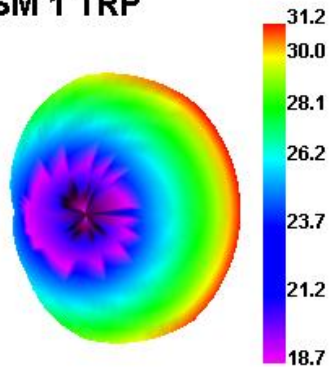
GSM850 251 TIS



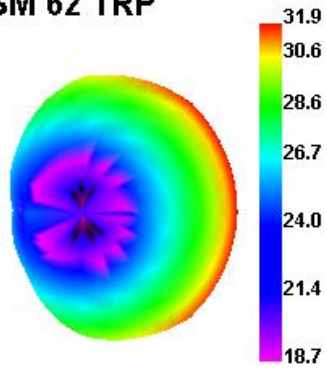
EGSM900

TIS

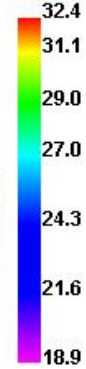
EGSM 1 TRP



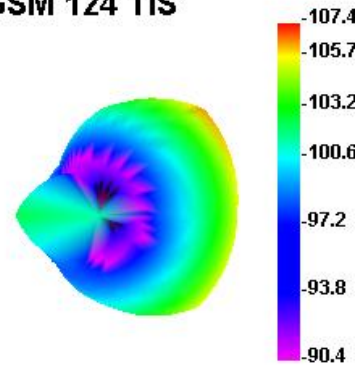
EGSM 62 TRP



EGSM 124 TRP



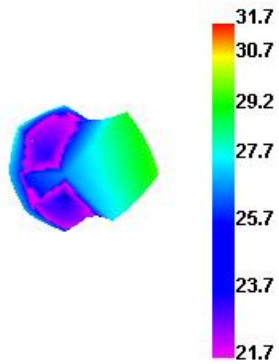
EGSM 124 TIS



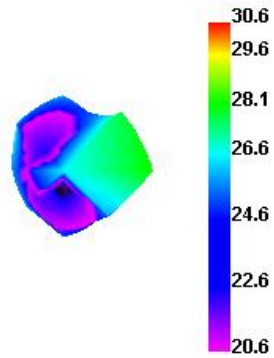
DCS1800

TIS

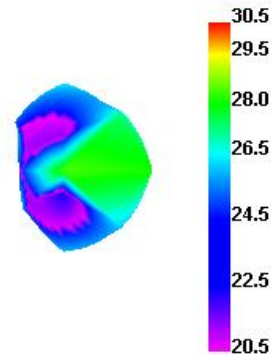
DCS 512 TRP



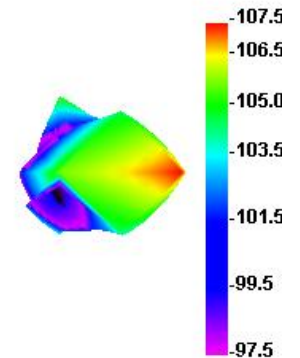
DCS 698 TRP



DCS 885 TRP



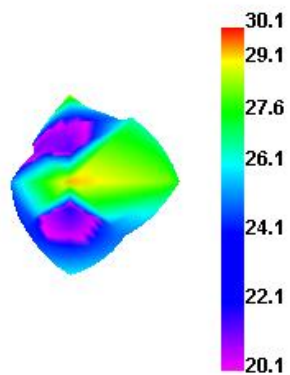
DCS 885 TIS



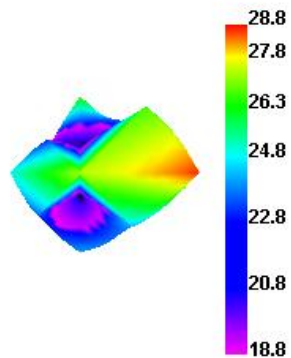
PCS1900

TIS

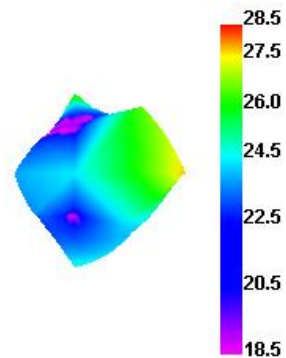
PCS 512 TRP



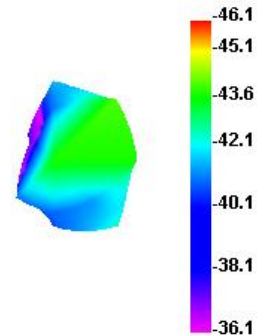
PCS 661 TRP



PCS 810 TRP



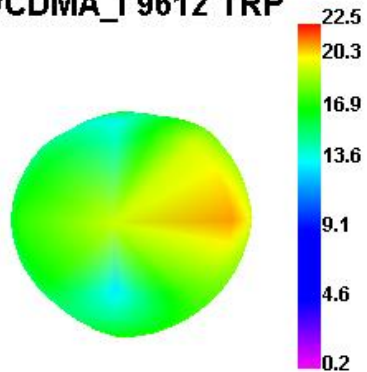
PCS 810 TIS



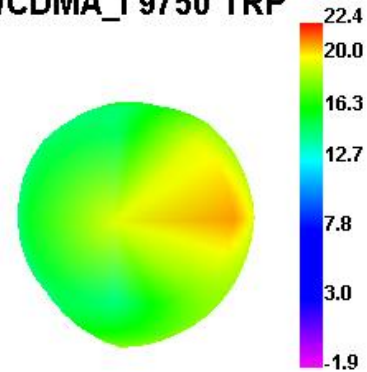
WCDMA1

TIS

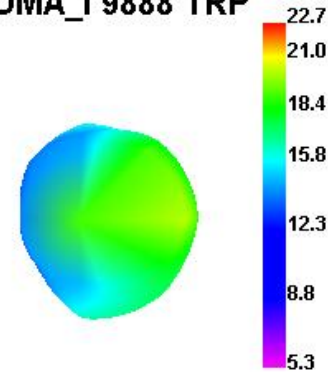
WCDMA_I 9612 TRP



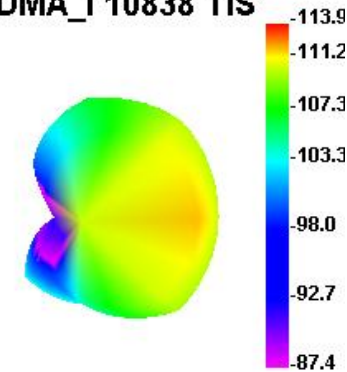
WCDMA_I 9750 TRP



WCDMA_I 9888 TRP



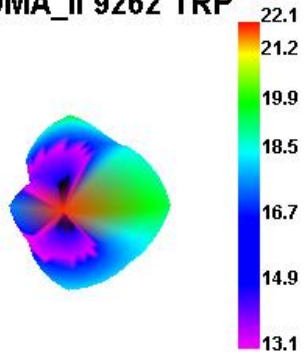
WCDMA_I 10838 TIS



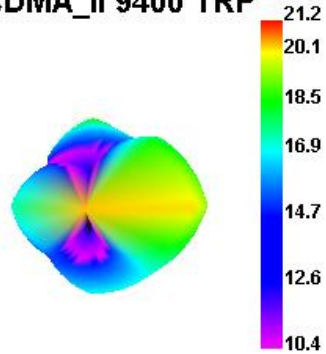
WCDMA2

TIS

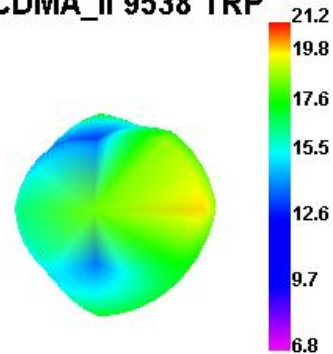
WCDMA_II 9262 TRP



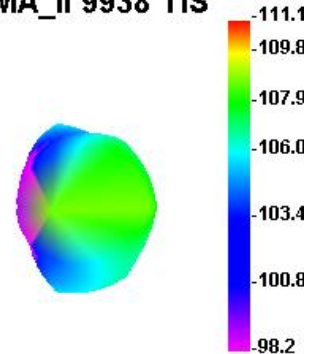
WCDMA_II 9400 TRP



WCDMA_II 9538 TRP



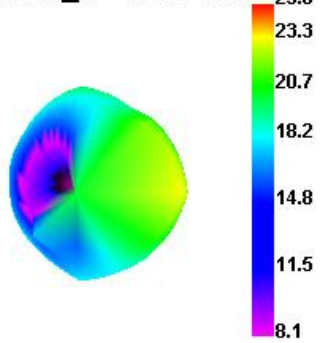
WCDMA_II 9938 TIS



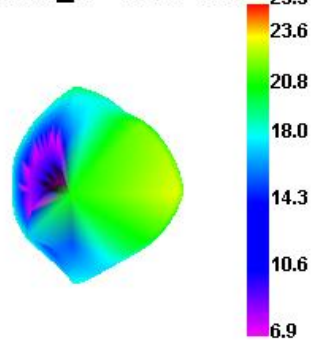
WCDMA4

TIS

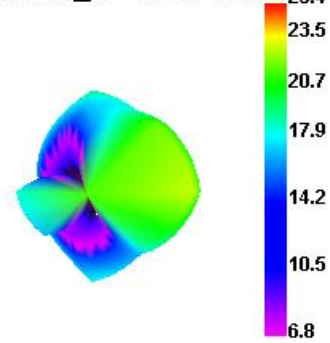
WCDMA_IV 1312 TRP



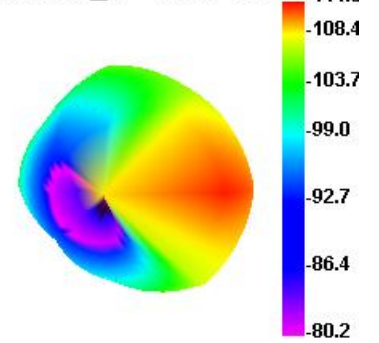
WCDMA_IV 1413 TRP



WCDMA_IV 1513 TRP

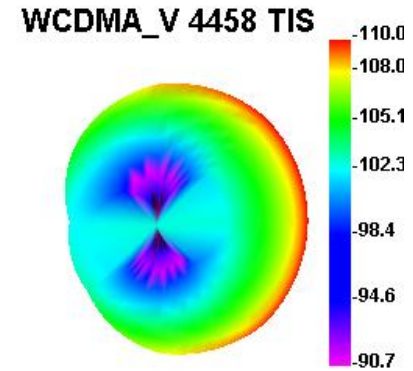
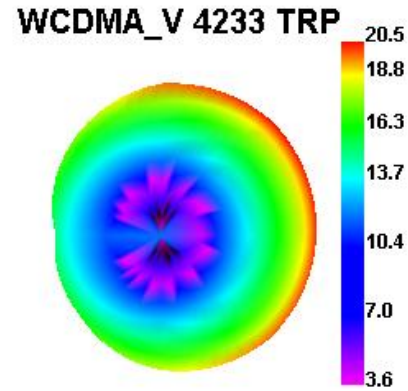
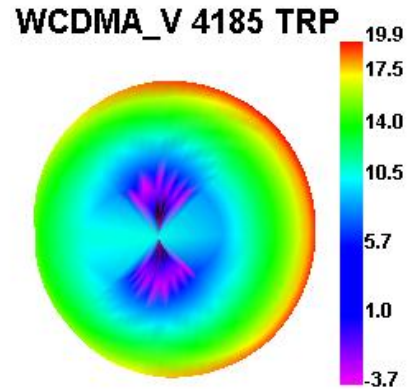
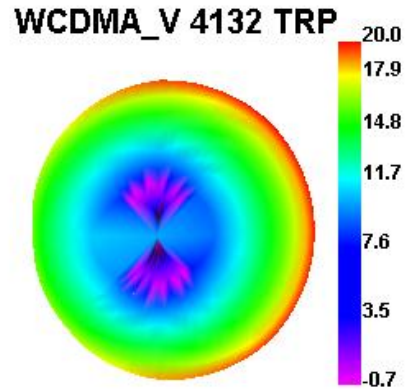


WCDMA_IV 1738 TIS

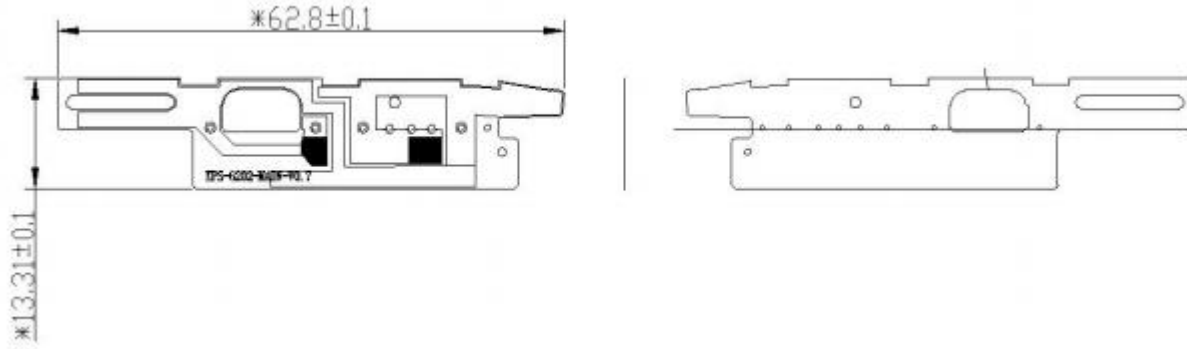


WCDMA5

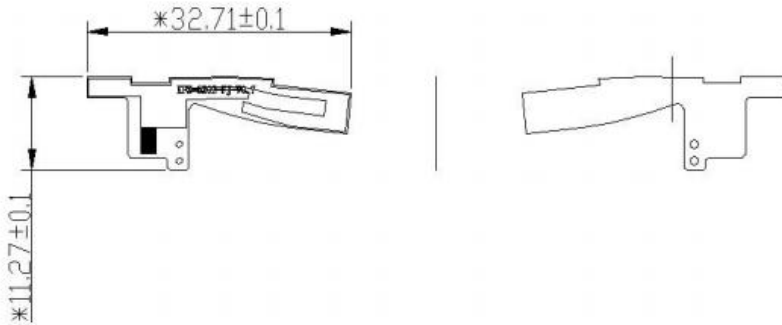
TIS



Main antenna:



LTE diversity antenna:



WIFI/BT/GPS antenna:

