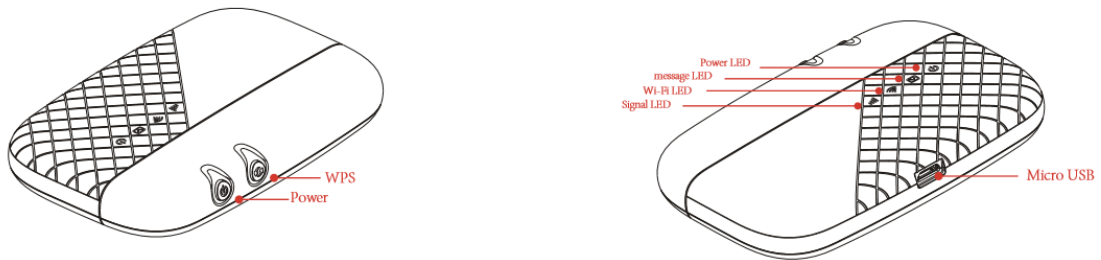


J600 User Manual

Interface



key	Illustrate
Power key	Long press over 5 seconds to power on and long press to power off
WPS	Press to active the WPS
Reset	The Reset button is on the opposite side of the machine. If you forget Administrator password or Wireless network key, you can press the Reset key to restore factory default settings.

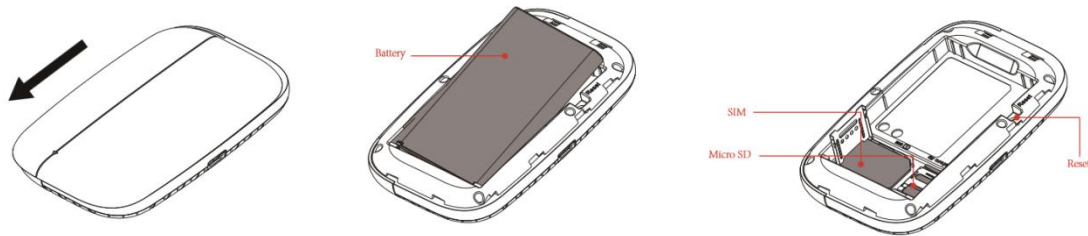
LED light color Indication

Indicator	Color	Working Status	
Power LED	Green	Solid:booting up the device	Blink: Turn on-0.5s Turn off-0.5s
	Amber	Blink:Charging	
	Blue	Solid:Battery High(100%-60%) or Charge Completed	
	Amber	Solid:Battery Middle(60%-15%)	
	Red	Solid: Battery too low nearly shutdown(<15%)	
SMS LED	Blue	Blink:NewSMS	
Signal LED	Blue	Solid: Register to LTE (not connect)	
		Blink: Connected to LTE network	
	Green	Solid: Register to 3G (not connect)	
		Blink: Connected to 3G network	

	Purple	Solid: Register to 2G (not connect)	
		Blink: Connected to 2G network	
	Red	Blink: No Service/Device Error	
WiFi LED	Blue	Solid: No Client	Blink: Turn on-0.2s Turn off-0.1s
		Slow Blink: Client is activated	
		Fast Blink: WPS is activated	

Installation

Follow the diagram to install the SIM card and SD card



Tips: Always switch the device off and disconnect the charger before removing the battery.

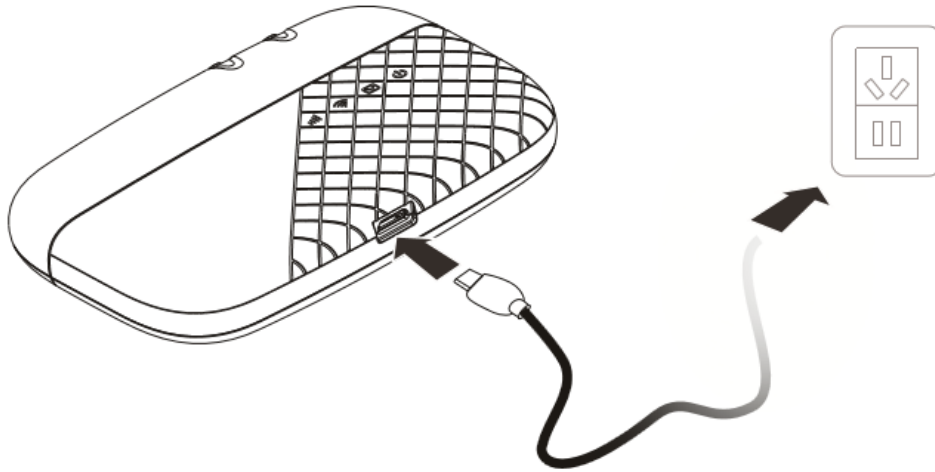
1. Remove the back cover and battery;
2. Insert the SIM card and SD card. Ensure that the contact area on the card is facing down and that the beveled corner on the card is facing the beveled corner on the holder.
3. Align the battery contacts with the battery compartment connectors, and insert the battery. Replace the back cover lastly.

Charge

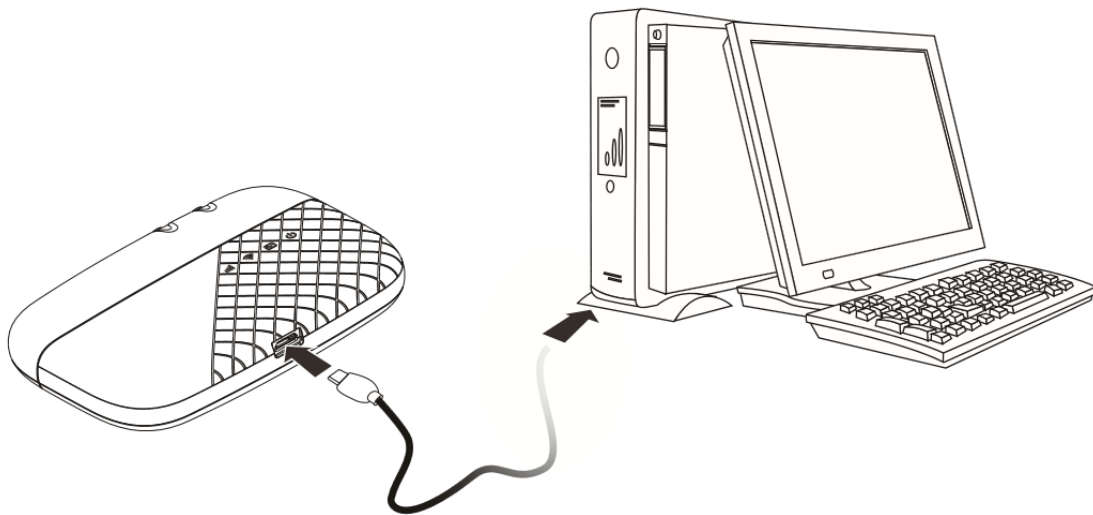
Your battery has been partially charged at the factory. If the device indicates a low charge, do the following:

1. Connect the charger to an outlet.
2. Connect the USB charger plug to your device's USB port.
3. When the device indicates a full charge, disconnect the charger from the device, then from the outlet.

One : Using charge adapter



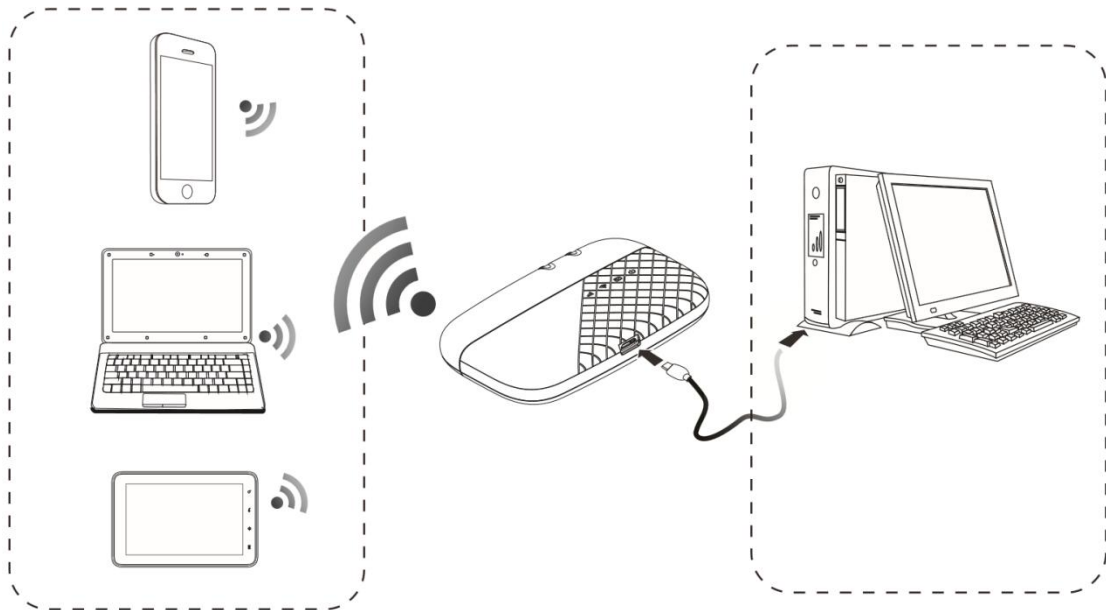
Two : Using USB port



J600 Usage

J600 support 4G/3G/2G networks. Insert the SIM card, Wi-Fi devices and the computer can access the Internet through J600, enjoy high-speed network services. Smart phones, tablet computers, game consoles and other Wi-Fi devices can be connected with the J600 Wi-Fi connection for Internet access. Computers & laptops etc. may be connected to the J600 via USB cable for Internet Access.

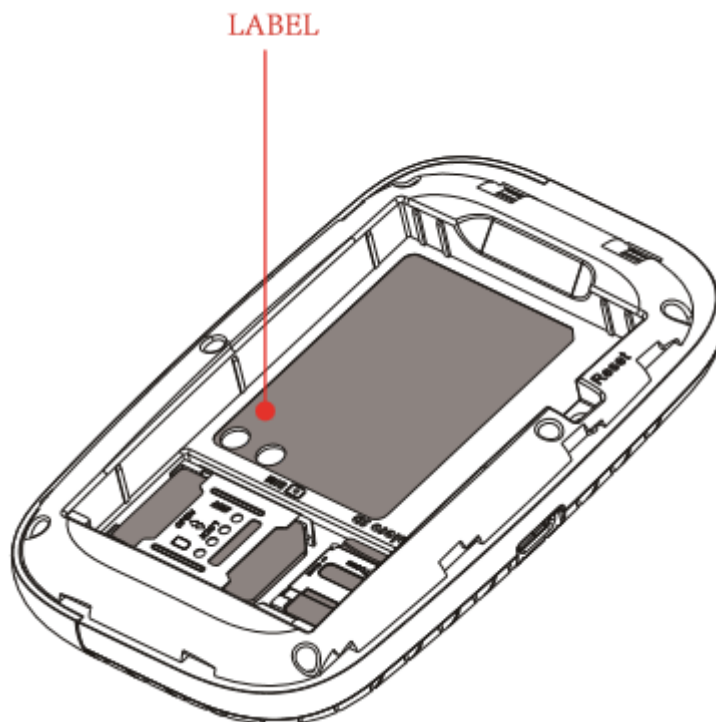
J600 connects computer for the first time via a USB connection, you need to follow the prompts to install the driver



Wi-Fi wireless Internet access

In order for a WiFi device to establish a connection with the J600 for the first time, you will need to select the J600 SSID (WiFi name) & enter the relevant WiFi password, which you may find in the following ways:

Method one: on the nameplate view the default SSID and Wi-Fi passwords

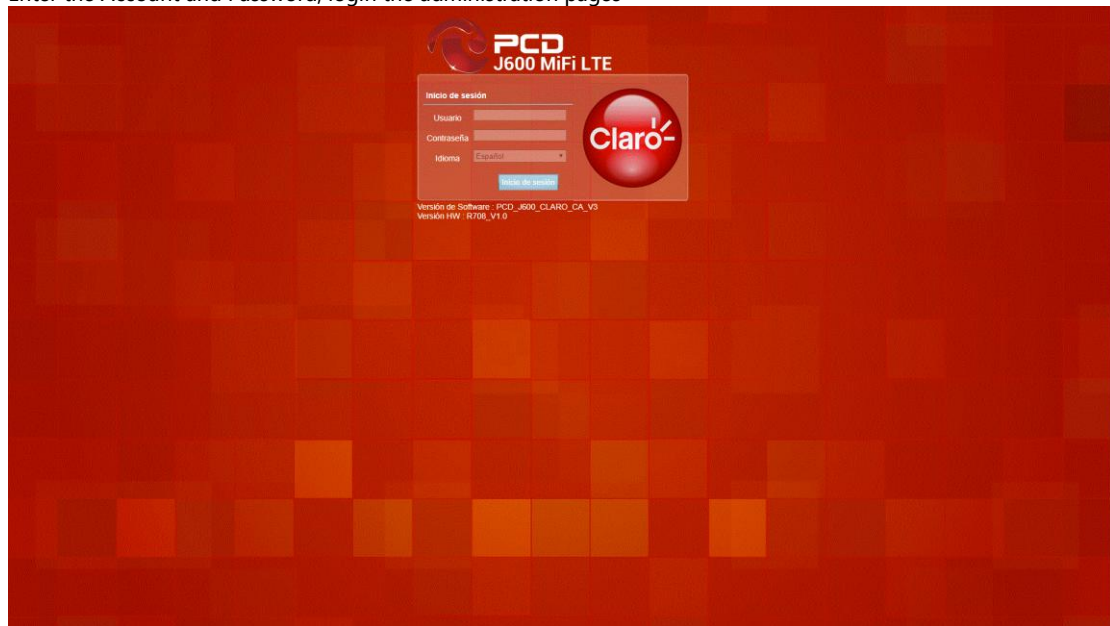


Method Two: Login management page view

1. Computer, open your browser, input <http://192.168.0.1> and enter.

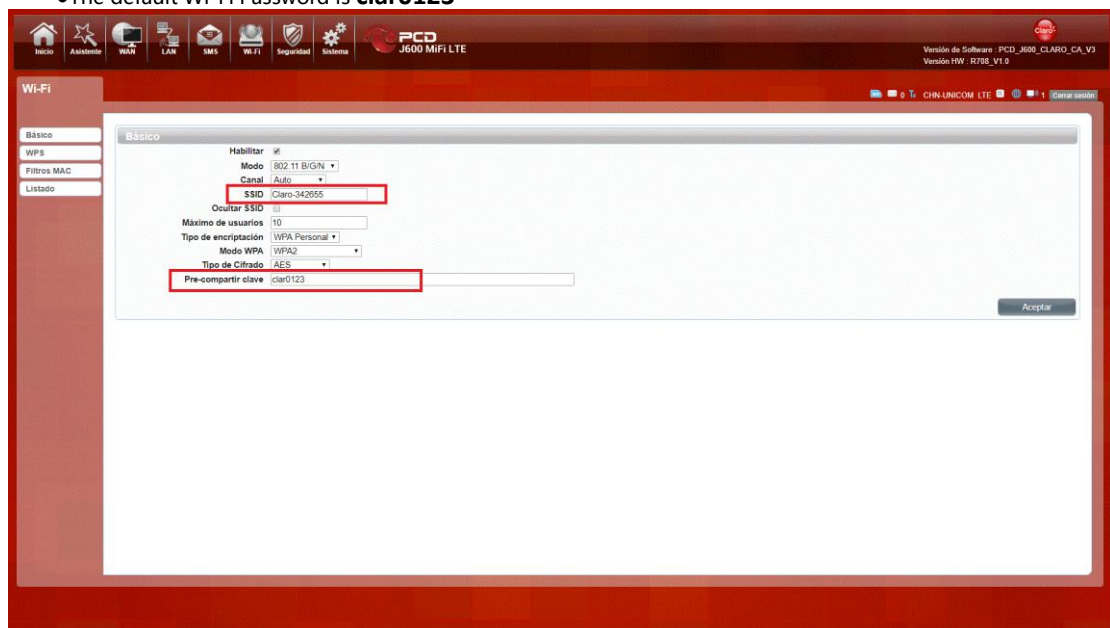
- The default Account is **admin**
- The default Password is **C1@r0**

Enter the Account and Password, login the administration pages



2. Enter the Wi-Fi menu, view the default SSID and Wi-Fi password

- The default SSID is **Claro-last 6 MAC address (ex:Claro-127FEB)**
- The default Wi-Fi Password is **clar0123**

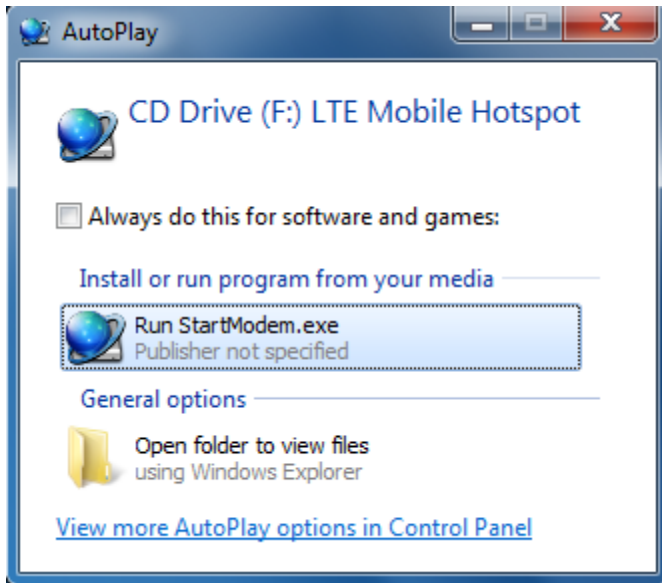
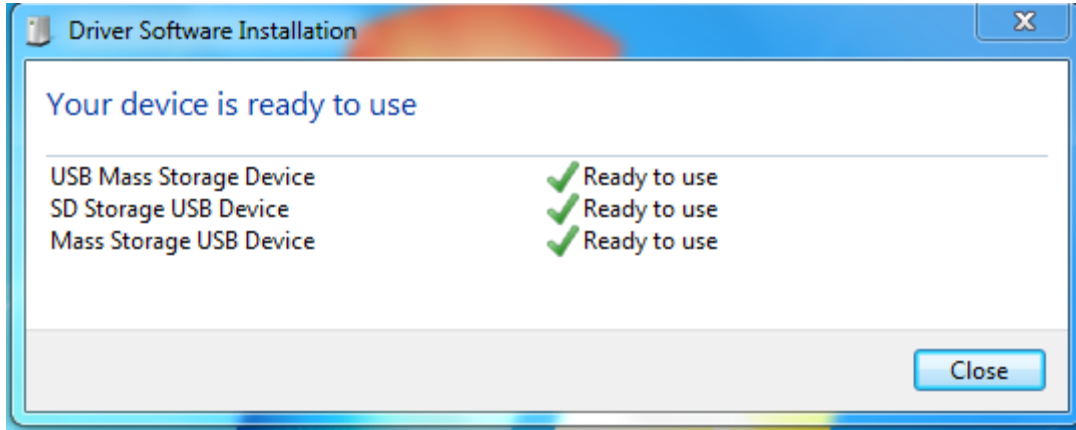
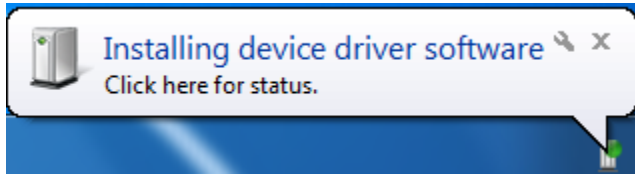



★Recommend that you start using J600 administration pages after setting a convenient landing memorizing SSID and a higher safety factor Wi-Fi passwords.

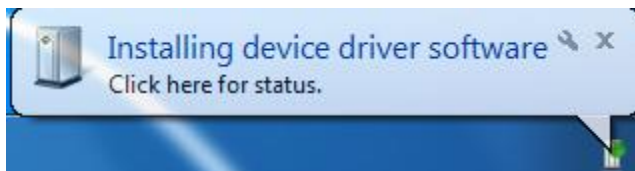
Install the driver and connecting the device

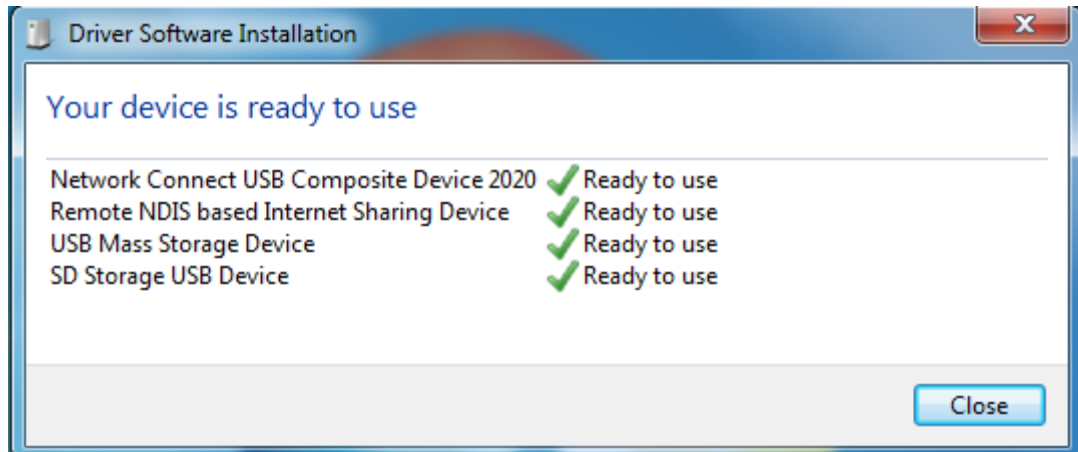
USB Connection:Windows 7 for example

1. Keep J600 powering on, Plug the device into your computer, it will show like the following pictures step by step.

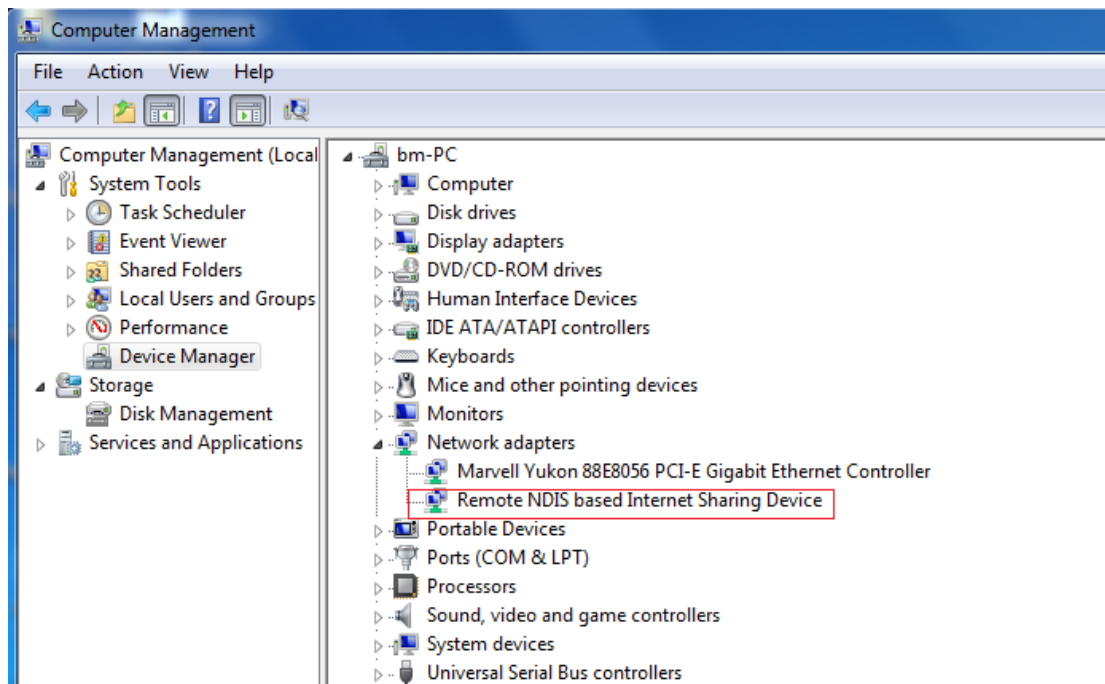


2. Double-click the  **Run StartModem.exe**, wait for the installation to complete.





3. Check the network card is installed correctly, like the following pictures.

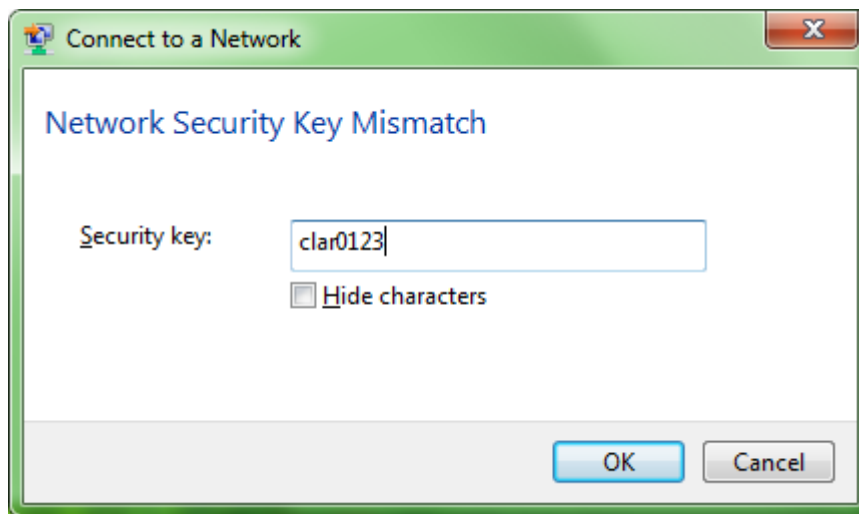


Establish Wi-Fi connection: you must ensure that the computer is equipped with a wireless network card. If the computer shows the presence of Wi-Fi connectivity, the wireless LAN is available. Otherwise, you need to check your wireless network card is working properly.

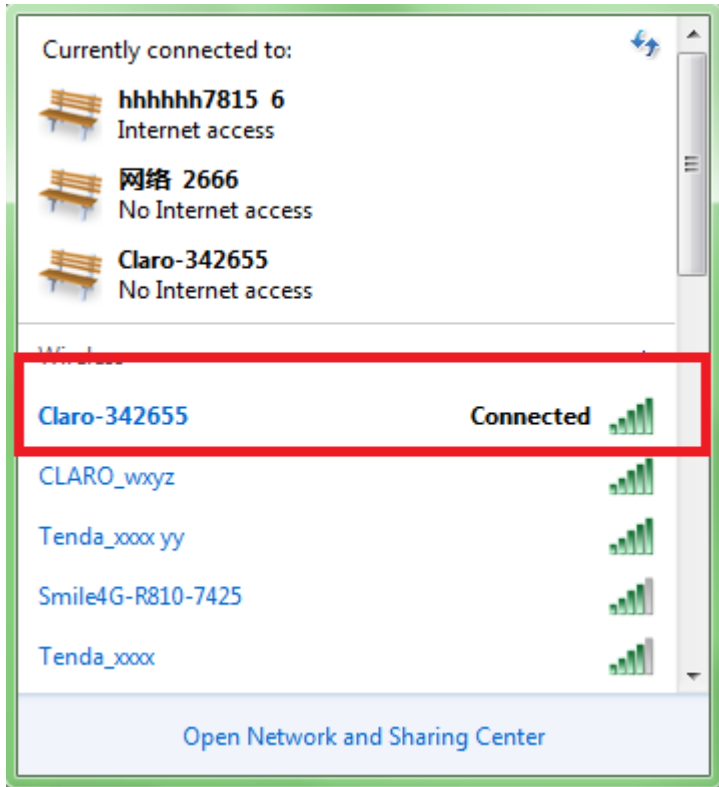
1. In the Wi-Fi list, select the SSID consistent with J600 Wi-Fi, click Connect



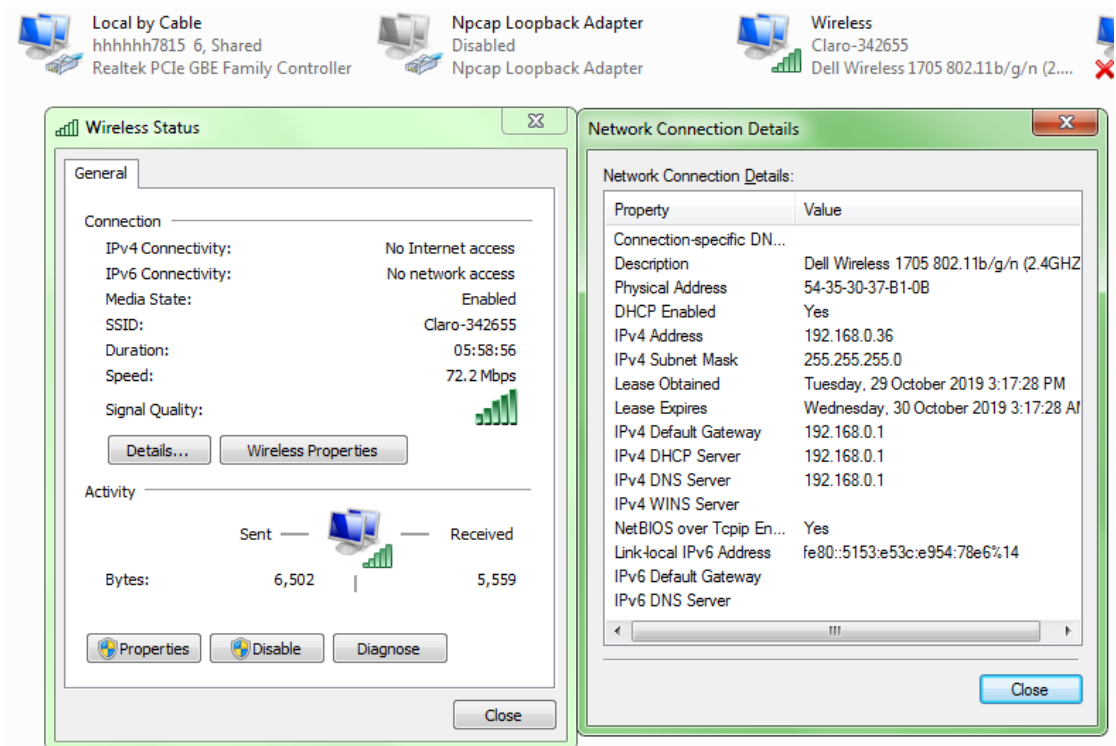
2. Enter the correct Wi-Fi password, click OK



3. Wait a moment, Wi-Fi connection is displayed next to the name, Wi-Fi connection is successful



4. Check the network card is installed correctly,like the following pictures



WebUI

● Home

The screenshot displays the 'Inicio' (Home) page of the PCD J600 MIFI LTE WebUI. The interface is organized into several sections:

- LAN:** Shows IP address (192.168.0.1), Subnet Mask (255.255.255.0), and User (1).
- IPV4 WAN:** Shows IP address (10.58.208.191), Primary DNS (112.65.104.255), Secondary DNS (210.22.84.3), and connection time (00:05:10).
- IPV6 WAN:** Shows IPv6 address (2408:0402:3e:3e11:c2e:b1c5:cd4c:e8b0), Primary DNS (2408.0000.0.0000.0), Secondary DNS (2408.0099.0.0099.0), and connection time (00:05:09).
- Traffic Statistics:** Shows TX and RX bytes for IPv4 (63580 TX, 141615 RX) and IPv6 (9260 TX, 12184 RX).
- Tipo de red LTE / WCDMA:** Displays SIM status (registered), signal level, LTE signal type, message status (0), and connection states for IPv4, IPv6, and Roaming (Sin Roaming).
- System:** Shows system uptime (00:06:37).

First part of the main display settings and network status information, such as IP address, SIM card status, type and quality of the network signal, whether it is roaming, with or without a new message, and traffic statistics, and system uptime, and so on.

● Wizard

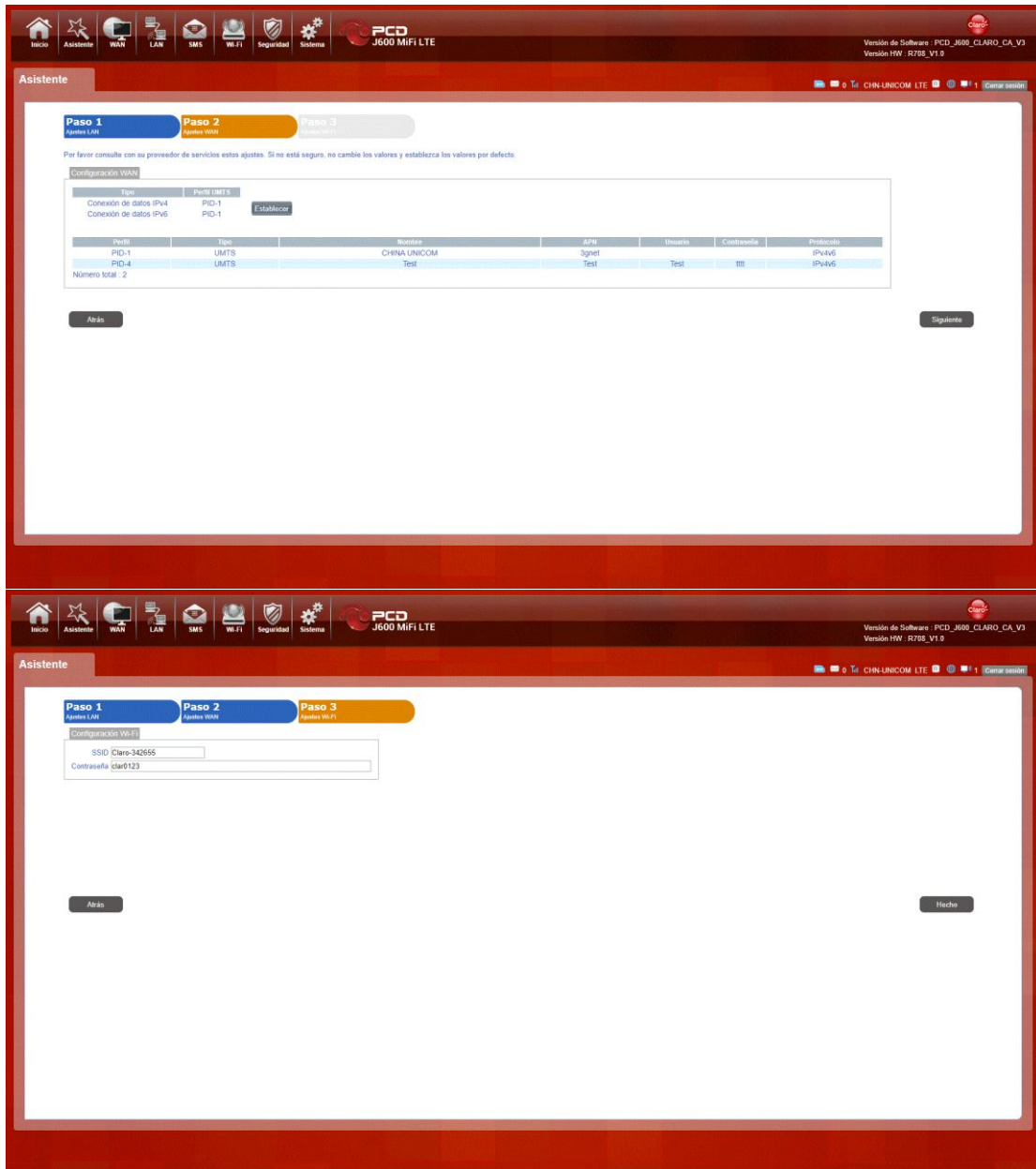
The screenshot displays the 'Asistente' (Wizard) page for configuring the LAN. It features a three-step process:

- Paso 1:** Configuración LAN (Current step).
- Paso 2:** Configuración WAN.
- Paso 3:** Configuración de seguridad.

The 'Configuración LAN' section includes input fields for:

- Dirección IP (192.168.0.1)
- Máscara IP Subnet (255.255.255.0)

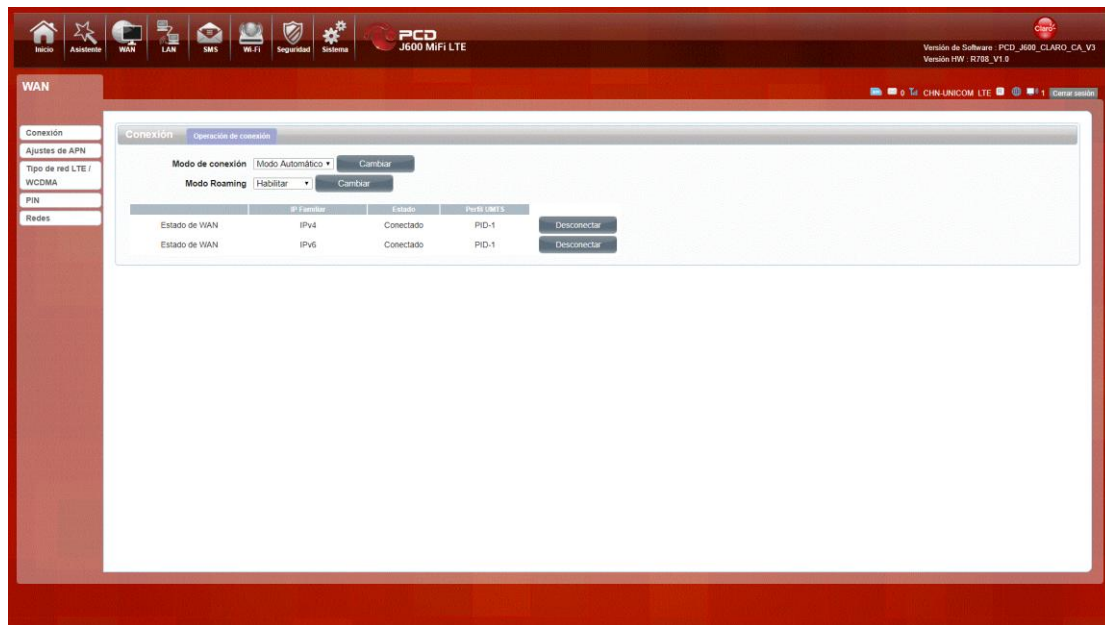
A 'Siguiente' (Next) button is located at the bottom right of the configuration area.



You can quickly change the lan configuration, set the apn , and change the SSID \ password through the wizard function.

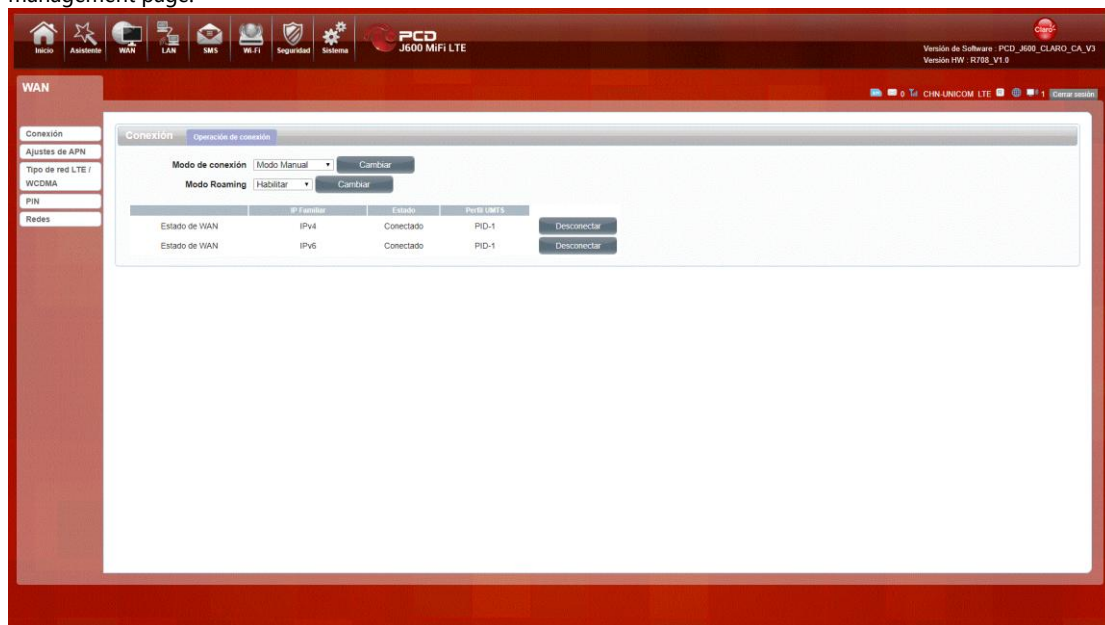
● WAN

1. Connection



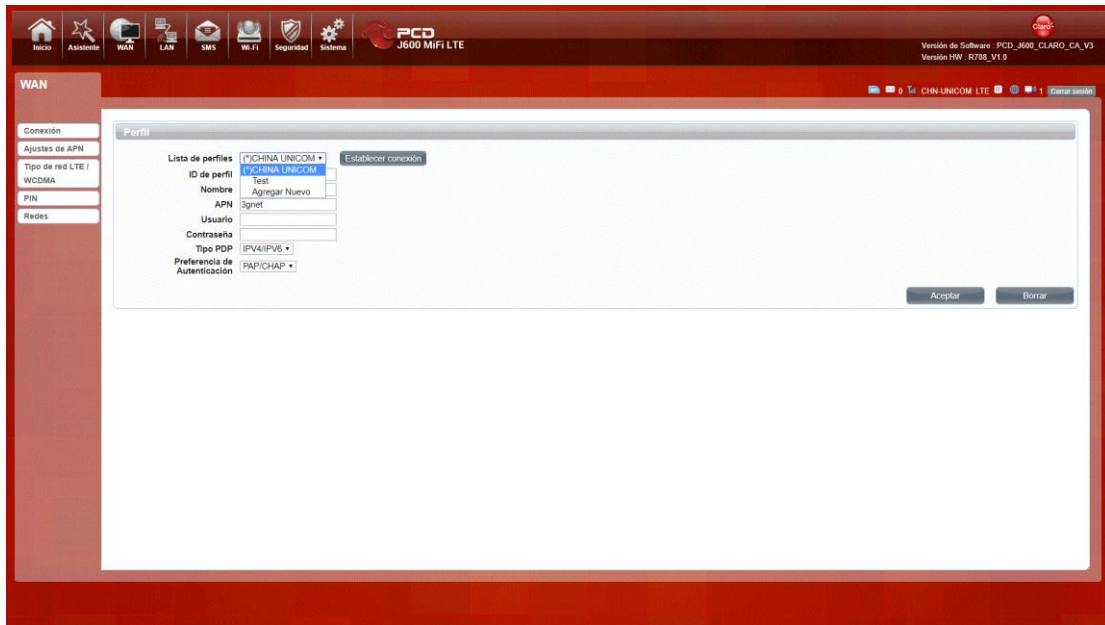
Dialing Mode:

Select the Auto Mode, after you turn on J600 without additional operations, the device will automatically connect to the network; select the Manual Mode, you need to manually connect to the network after opening the J600 management page.

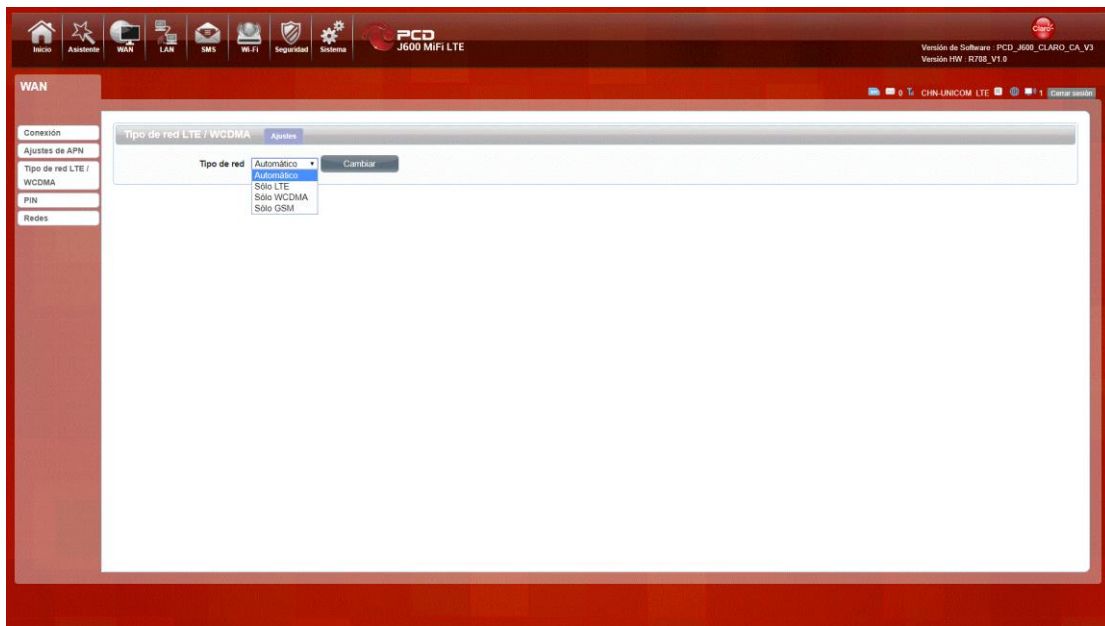


2. APN Setting

You can customize the network configuration or manually add the new APN and set default APN.

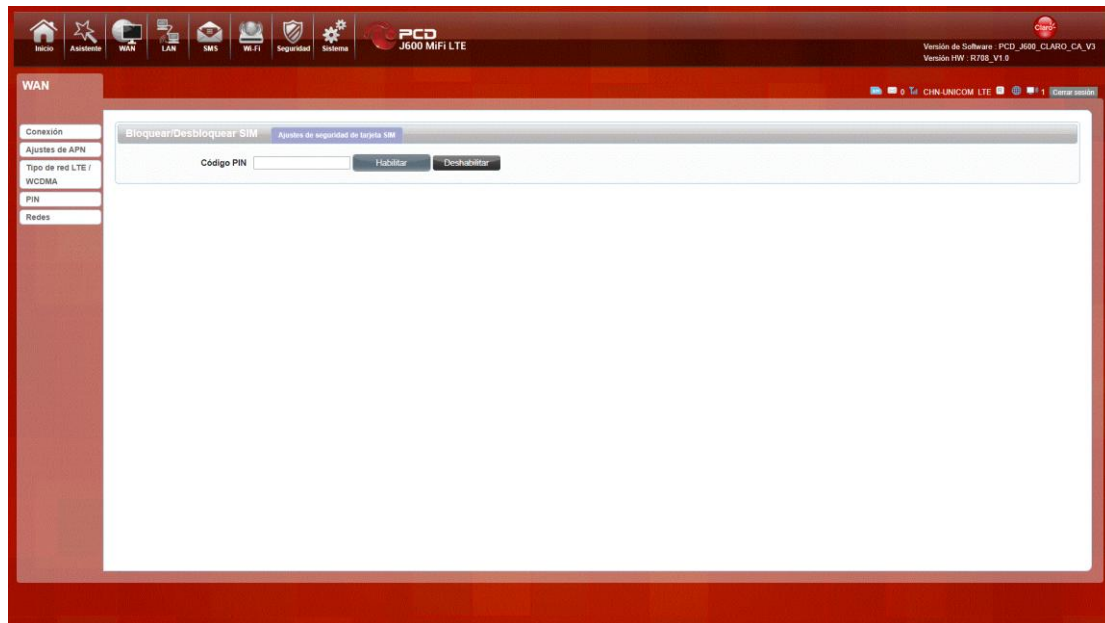


3. 4G/3G/2GModem



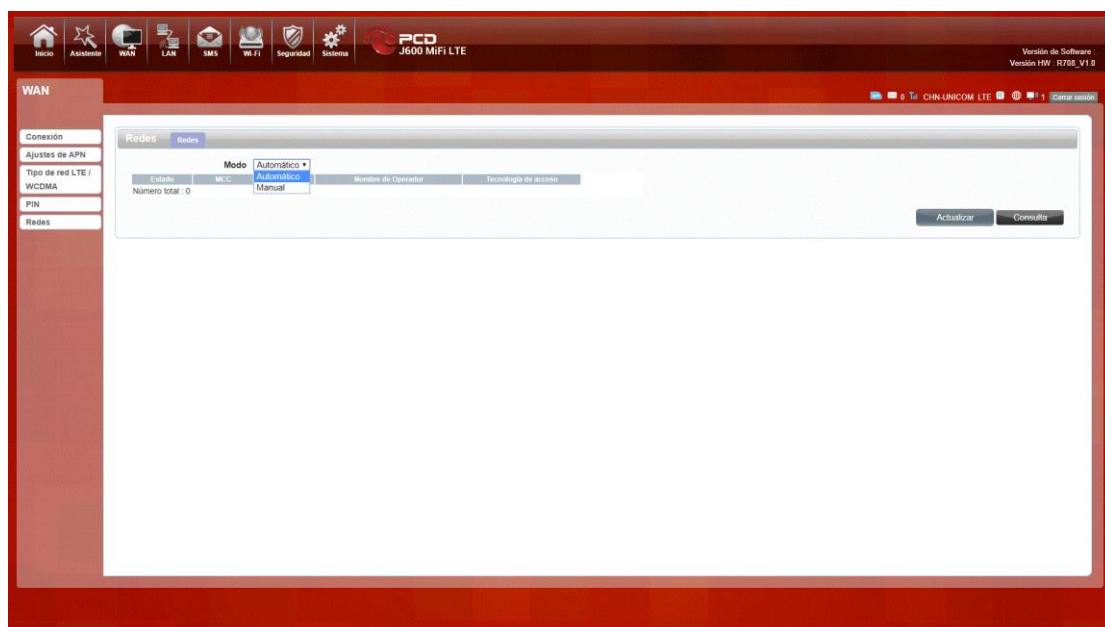
There are four types of networks can be choose: Auto is 4G/3G/2G, LTE Only is using only 4G, WCDMA Only is using only 3G,GSM Only is using only 2G.

4. PIN



Open your PIN, if you reboot the device, you need to login management page, and the page will prompt to enter the correct PIN code, you can use the SIM card. PIN / PUK code supplied with the SIM card provided by your carrier, please consult your carrier.

5. PLMN



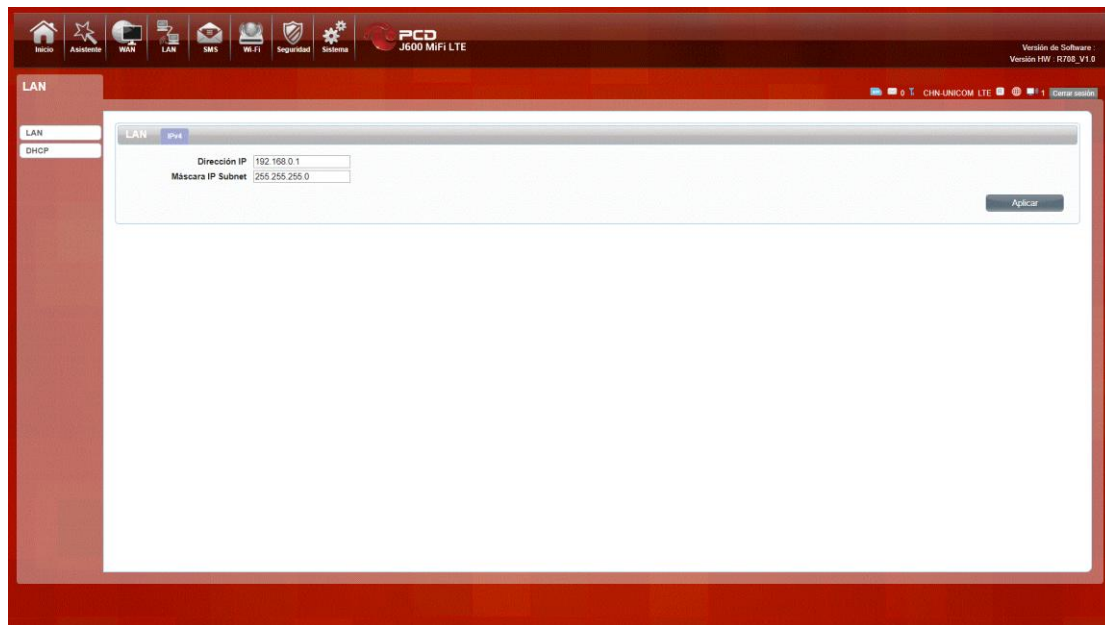
Into automatic and manual setting options

Automatic selection: Select this mode the device automatically selects the best network registration status

Manual setting: Select this mode before, if your device is in the state of dial-up Internet, disconnect the network, and then click the query, wait a moment, the device will search for all nearby networks, select a network, click to update, the device registers to the network that you selected.

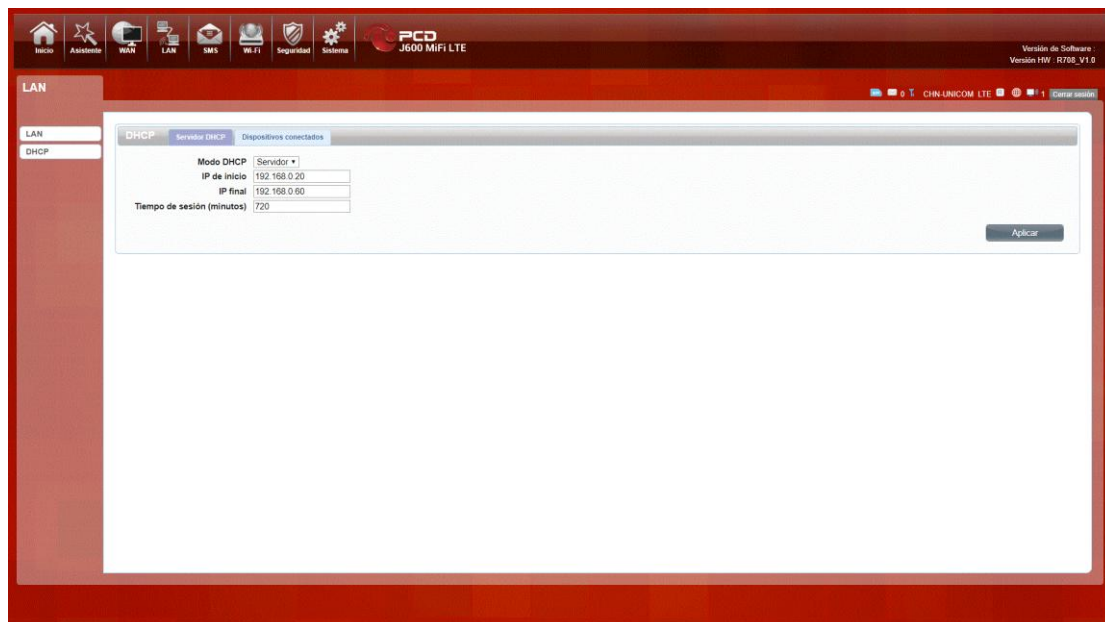
● LAN

1. LAN



We can change IP address in this page.

2. DHCP



DHCP Mode: Select the server mode, the device can be done using a DHCP server; choose None, which is off the server function.

Start / End IP address: Changing DHCP assigned IP and IP segments.

Lease Time: Each is assigned a time to use the IP

LeasedHosts: the J600 each wireless device list and USB device can view the Host name, MAC Address, IP Address, information about the Remaining Time.

PCO J600 MIFI LTE

Versión de Software: R700_V1.0
Versión HW: R700_V1.0

LAN

LAN

DHCP

DHCP

Server DHCP

Dispositivos conectados

#	Nombre del dispositivo	Dirección MAC	Dirección IP	Tiempo restante
1	MIS-ikomichougi	4c:49:e3:04:b4:20	192.168.0.49	11:57:25
2	DESKTOP-FUJSHQCF	4c:50:52:15:8c:c7	192.168.0.27	11:56:23

Número total: 2

Actualizar

SMS

When using SIM card to access network, you could also send text messages at the time. You can send, receive, reply, forward, and save test messages. You can send 10 text messages at the same time, SMS number intervals with a semicolon. Also you can setting the storage location of messages, and so on. We can operating the SMS in this page.

PCO J600 MIFI LTE

Versión de Software: R700_V1.0
Versión HW: R700_V1.0

SMS

Mensaje nuevo

Bandeja de entrada

Bandeja de salida

Borradores

Ajustes de SMS

Mensaje nuevo

Enviar SMS

Enviar a:

Mensajes:

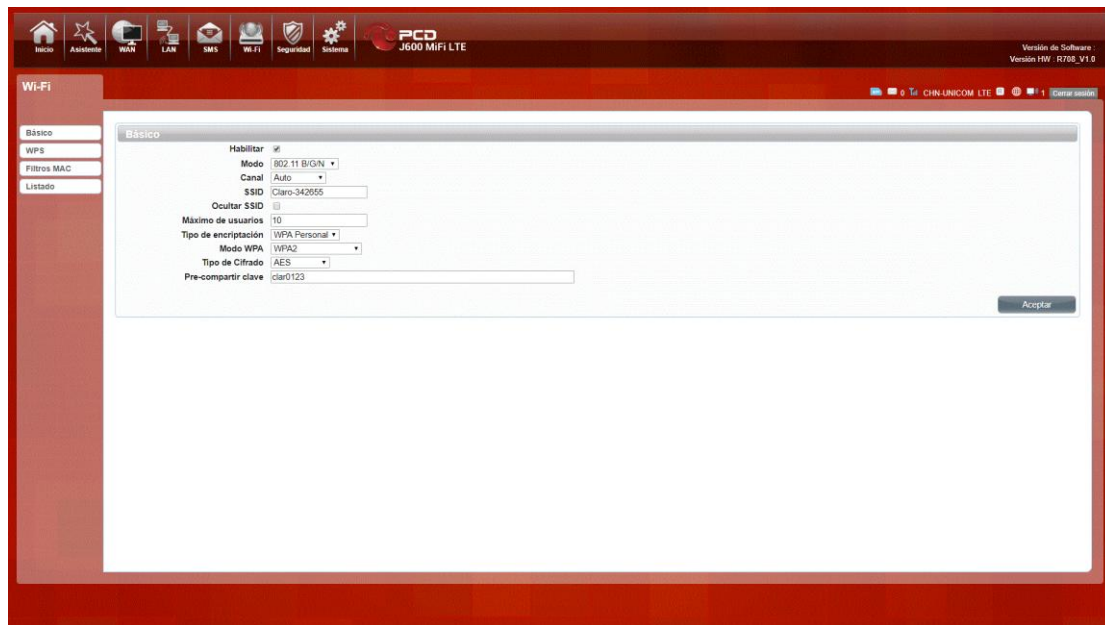
0160

Guardar

Enviar

● Wi-Fi

1. Basic

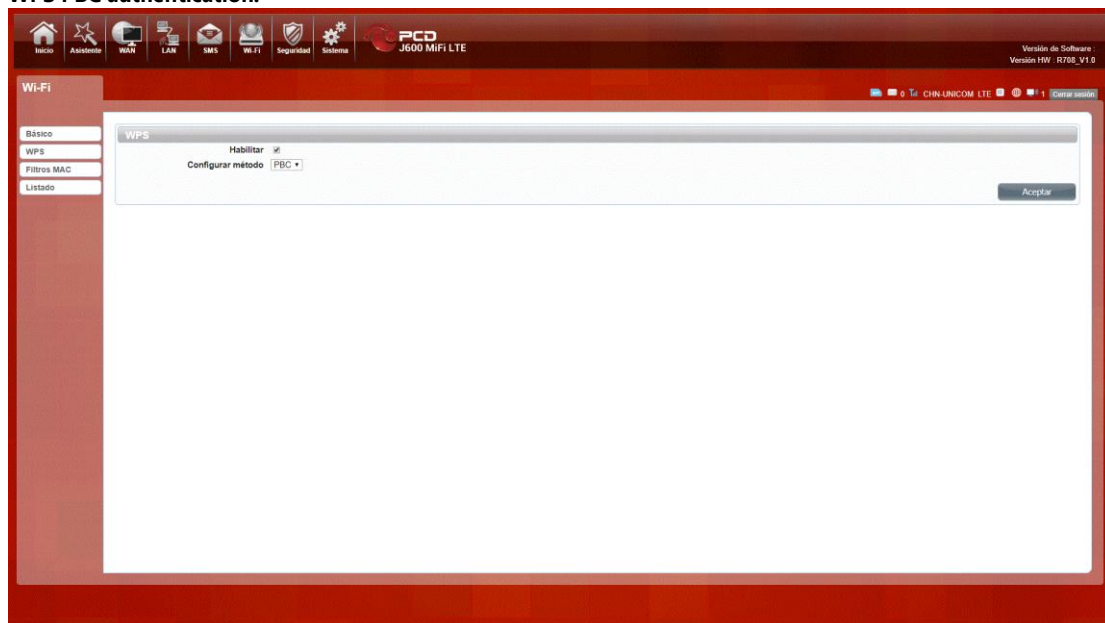


We can setting the wifi configuration in this page, like B/G/N mode, Channel, SSID,WIFI KEY and so on.

2. WPS

J600 supports two kinds of WPS authentication, PBC and PIN. Default is PBC authentication.

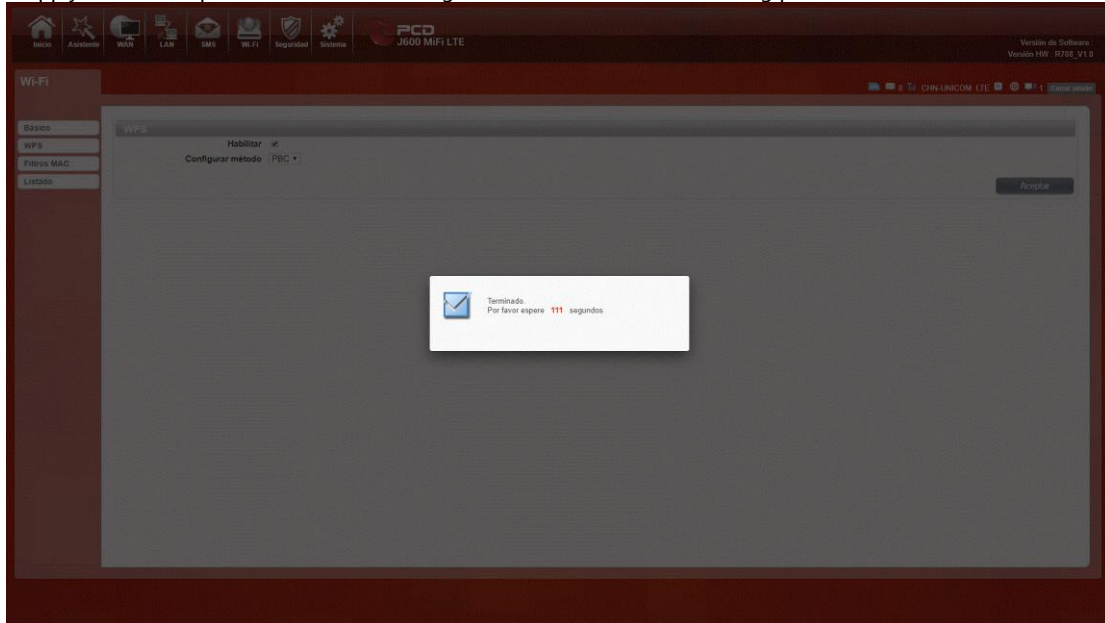
WPS PBC authentication:



If your WiFi Enabled ,device supports WPS (WiFi Protected Setup) and you have forgotten or do not wish to enter your password to connect to your J600, you may use the following available procedures for quick access to WiFi. Open the WPS:

WPS can be opened by two methods. The fist method is , Entering the management interface page, press the

“Apply “ button , open the WPS. It will lasting 120 seconds. Like the following picture.



Using WPS to connecting the J600 (Computer for example):

You can press the WPS button on the wireless card if your wireless card also supports WPS authentication. Waiting for a moment , It will be prompted to connect successfully.

Or

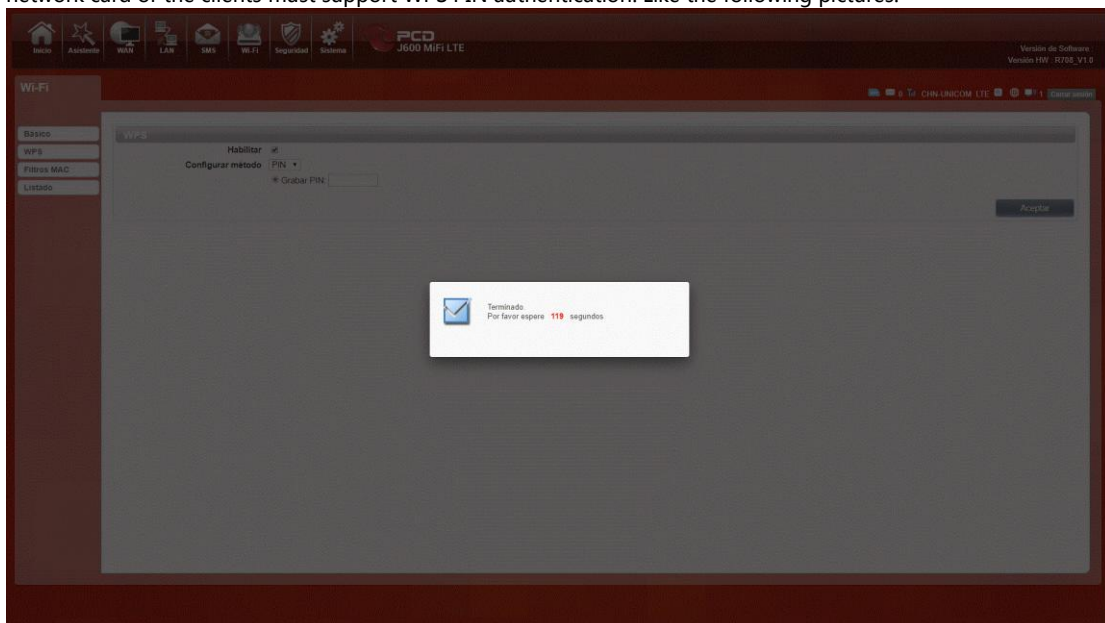
Select the SSID of the device and connect. then you can see connecting process.

The second method is, Select the SSID of the device and connect.

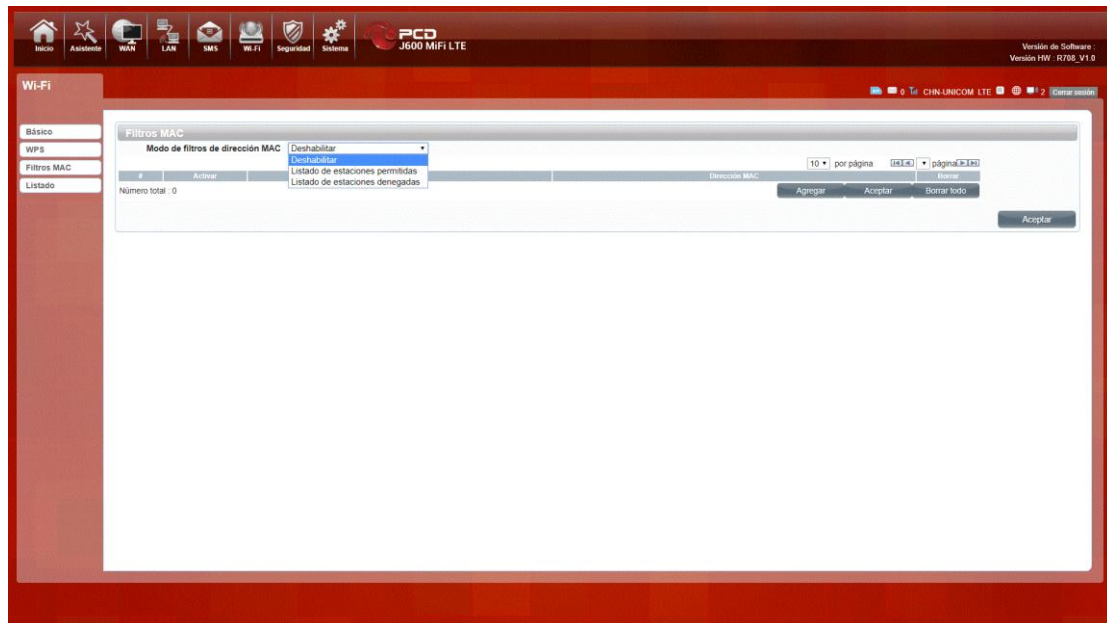
Press the WPS button on the J600, activate the WPS. It will lasting 120 seconds. then you can see connecting process.

WPS PIN authentication:

The connection to the J600 is achieved by inputting the relevant PIN key into the enrollee PIN text box, which you may find in the wireless network card. When you applied, It will lasting 120 seconds. The premise is that the wireless network card or the clients must support WPS PIN authentication. Like the following pictures.



3. MAC Filter

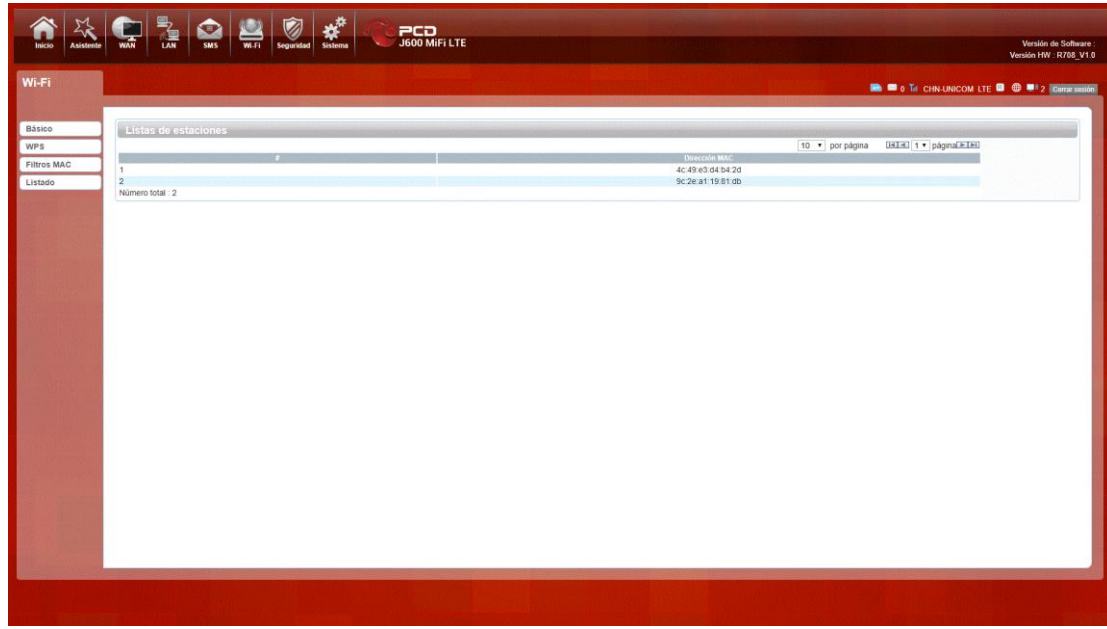


Deny list Stations: If you add the computers or wireless devices MAC address into the list, it can prohibiting the computers or wireless devices connect to the J600. The computes or wireless devices MAC address which are not in the list can able to connect to J600.

Allow list Stations: Opposite with Deny list Stations. It only allows the devices in the list to connect to the J600, other wireless devices are unable to connect to the J600

Disable: It means close the function of the MAC Address Filter.

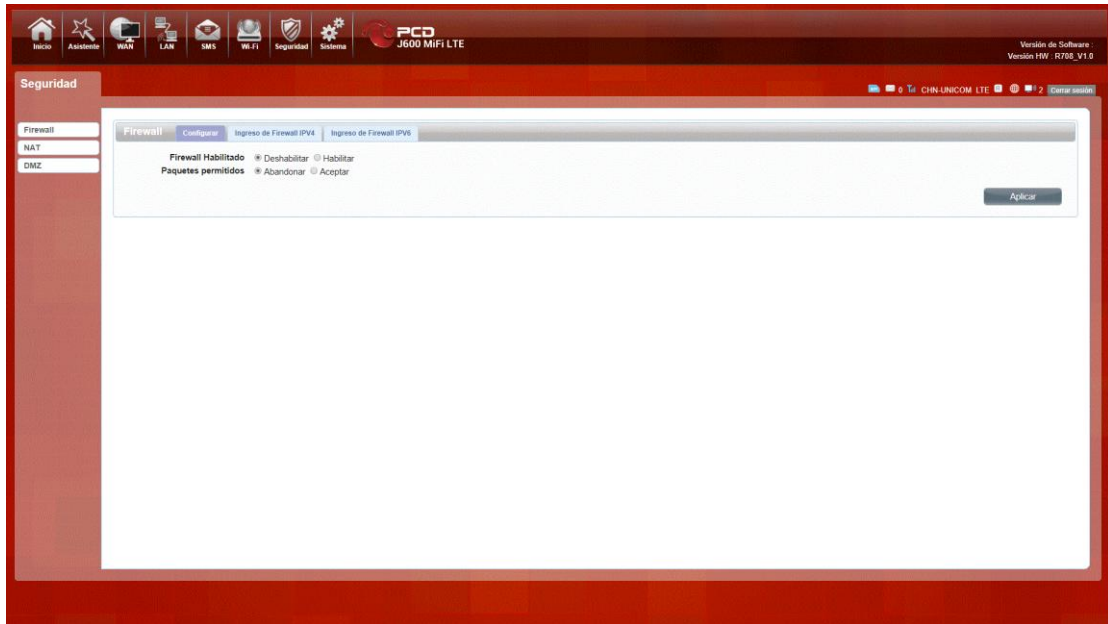
4. Station List



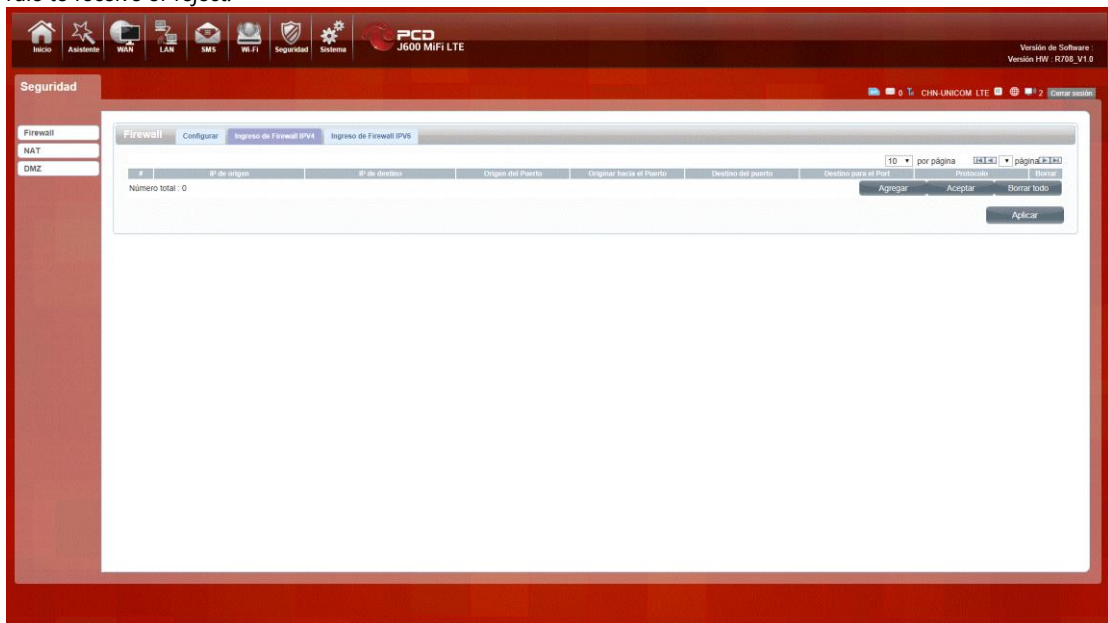
Show the information of wireless devices which are connected to the J600.

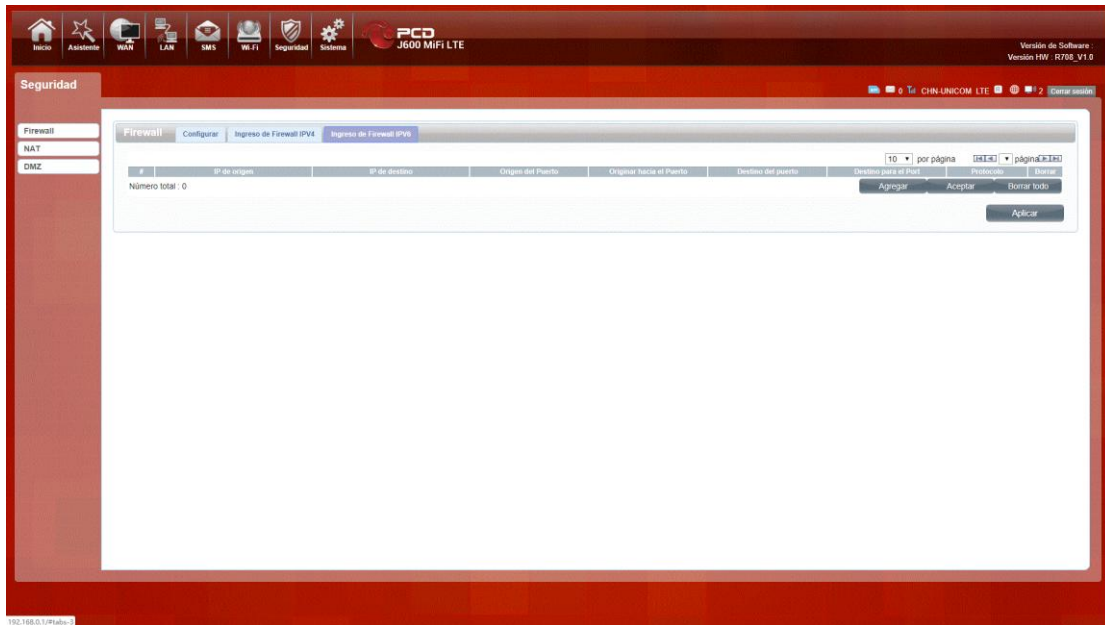
● Security

1. Firewall



Firewall configuration: You can Disable or Enable the Firewall function. Also you can setting the matching packets rule to receive or reject.

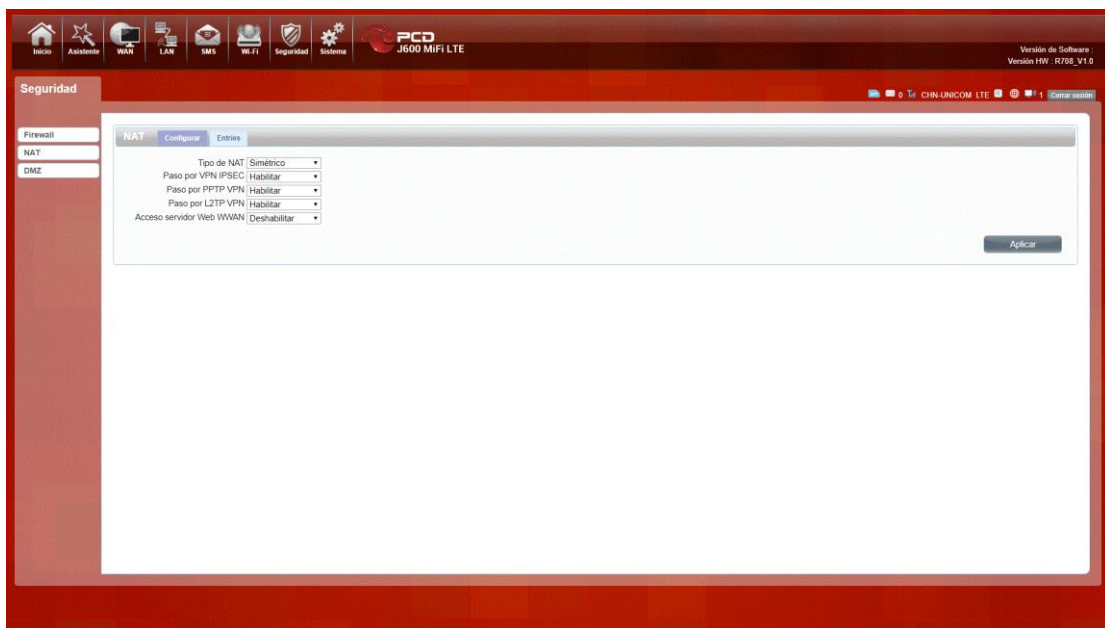


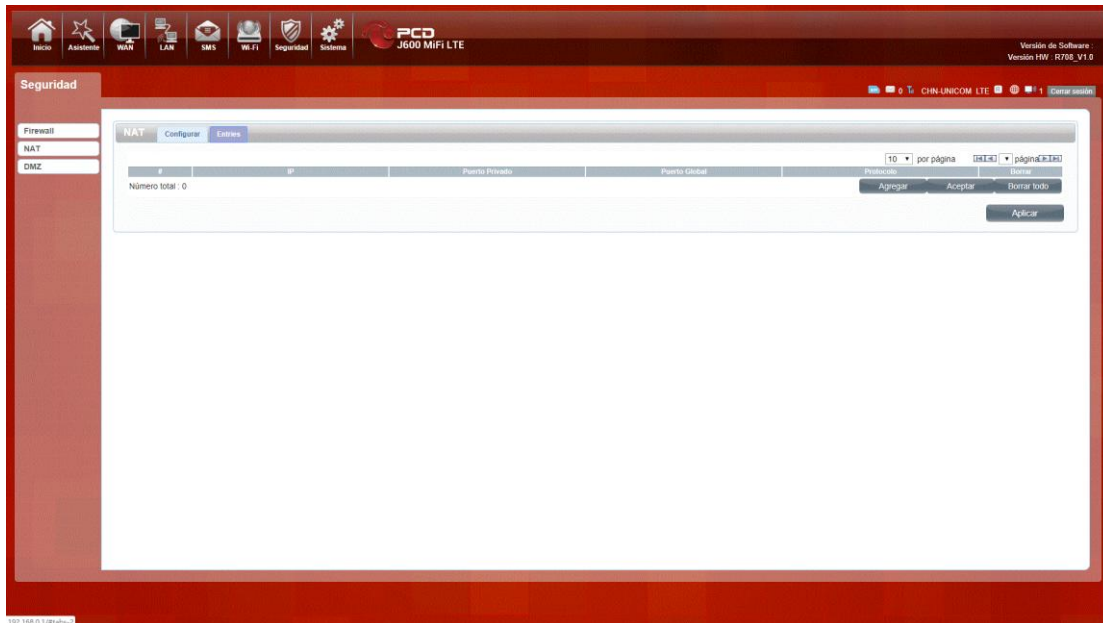


192.168.0.1/#tab=

You can add the rule in the list.

2. NAT

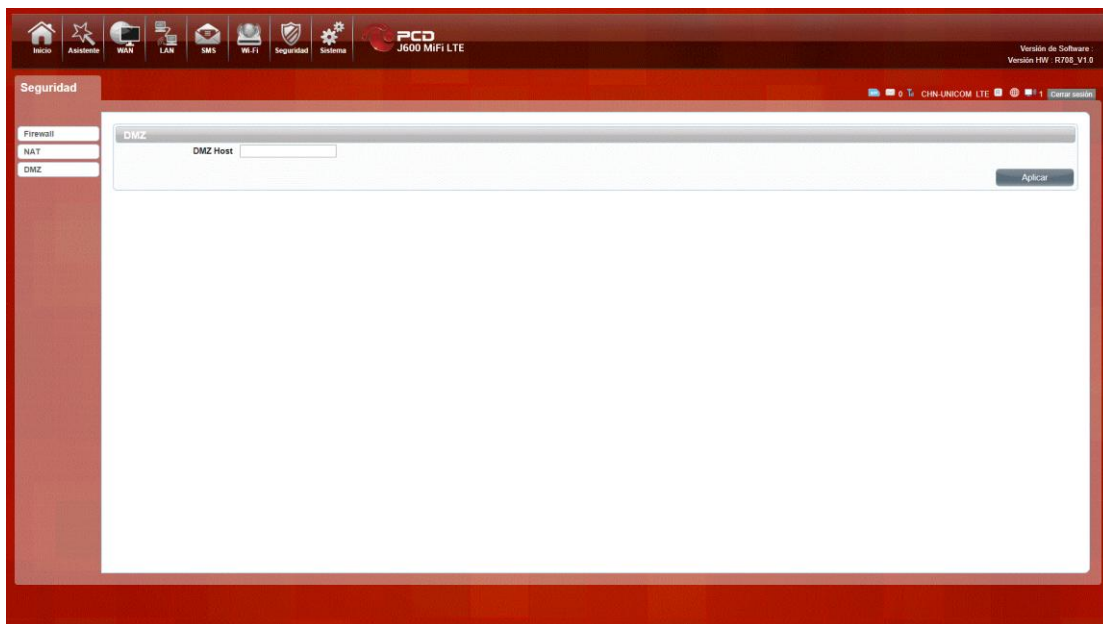




The J600 supports NAT/IPSEC VPN Pass Through/PPTP VPN Pass Through/L2TP VPN Pass Through/Webserver WWAN Access.

When some hosts inside the private network have already allocated the local IP address, that is, only the private address used in the private network, but now they want to communicate with the host on the Internet (no need to encrypt), we can use the NAT method.

3. DMZ



Receive all the data from external network interface forwarded to "DMZ IP address"

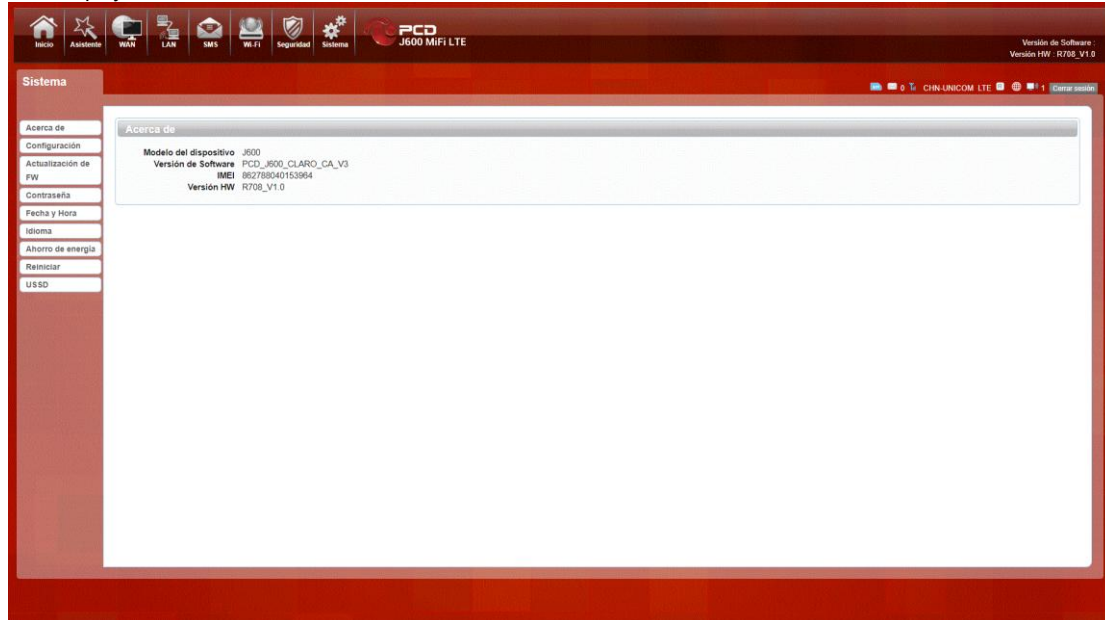
Enable DMZ: If an application has trouble working from behind the router, you can expose one computer to the Internet and run the application on that computer.

Note: Placing a computer in the DMZ may expose that computer to a variety of security risks. Use of this option is only recommended as a last resort.

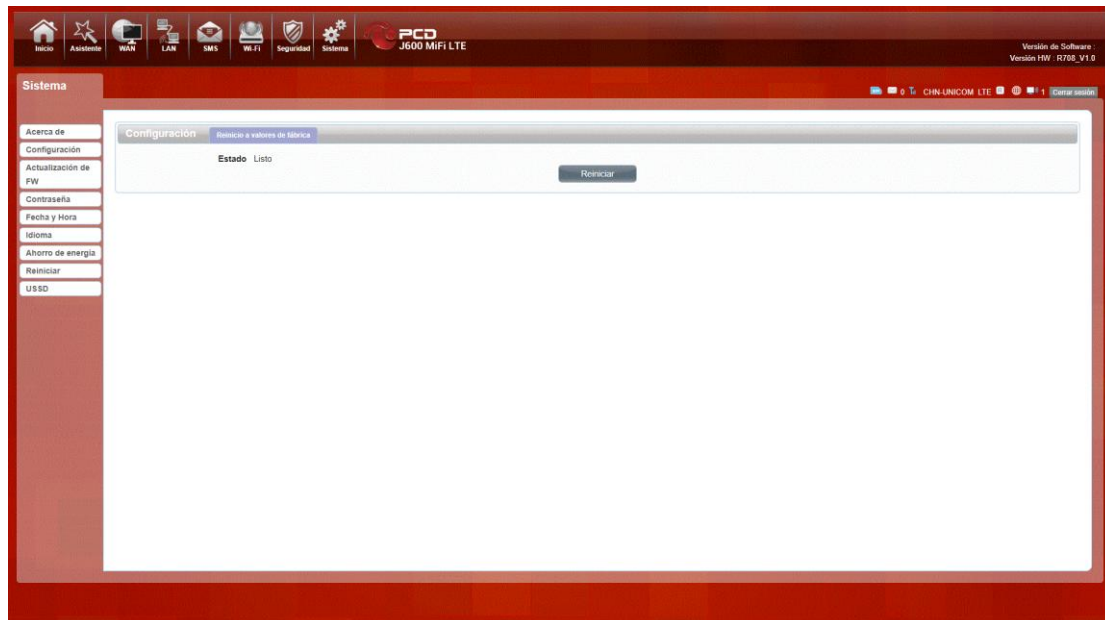
DMZ Address: Specify the IP address of the computer on the LAN that you want to have unrestricted Internet communication.

1. About

J600 displays some basic information, such as device name, firmware version, IMEI, baseband version.

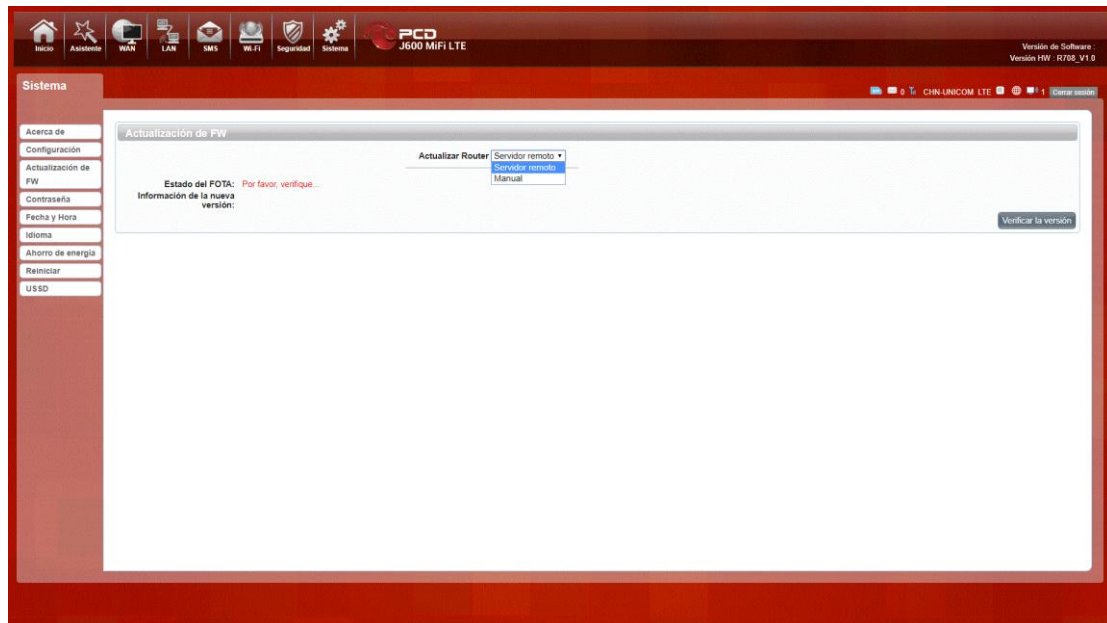


2. Configuration



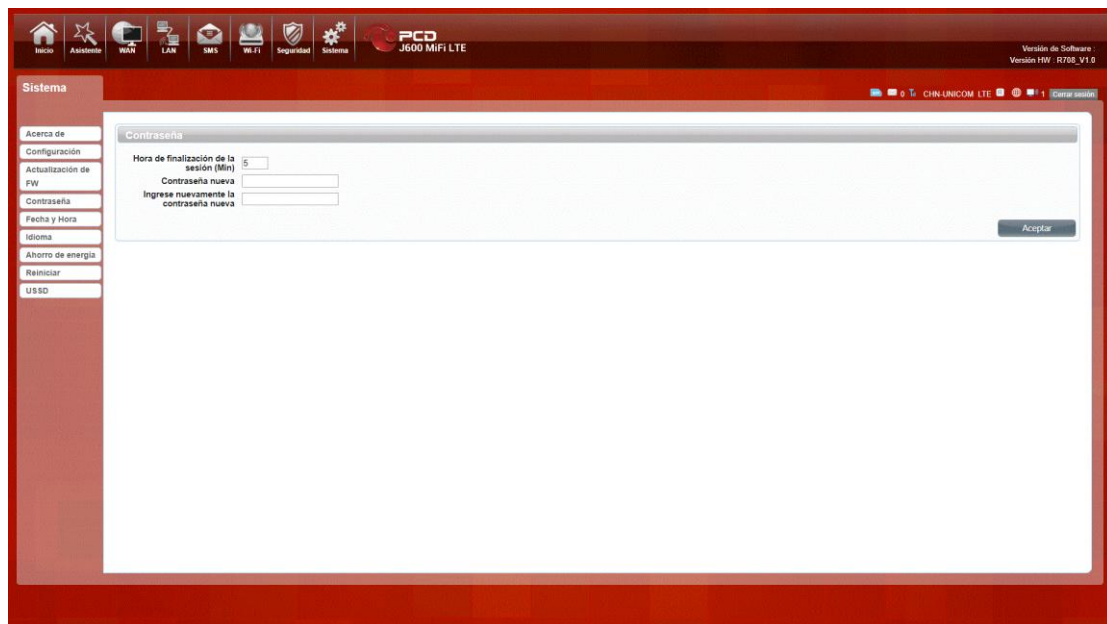
Restore the factory settings, All the personal configuration will be deleted, all configuration pages will be restored to the factory defaults.

3. Firmware Upgrade



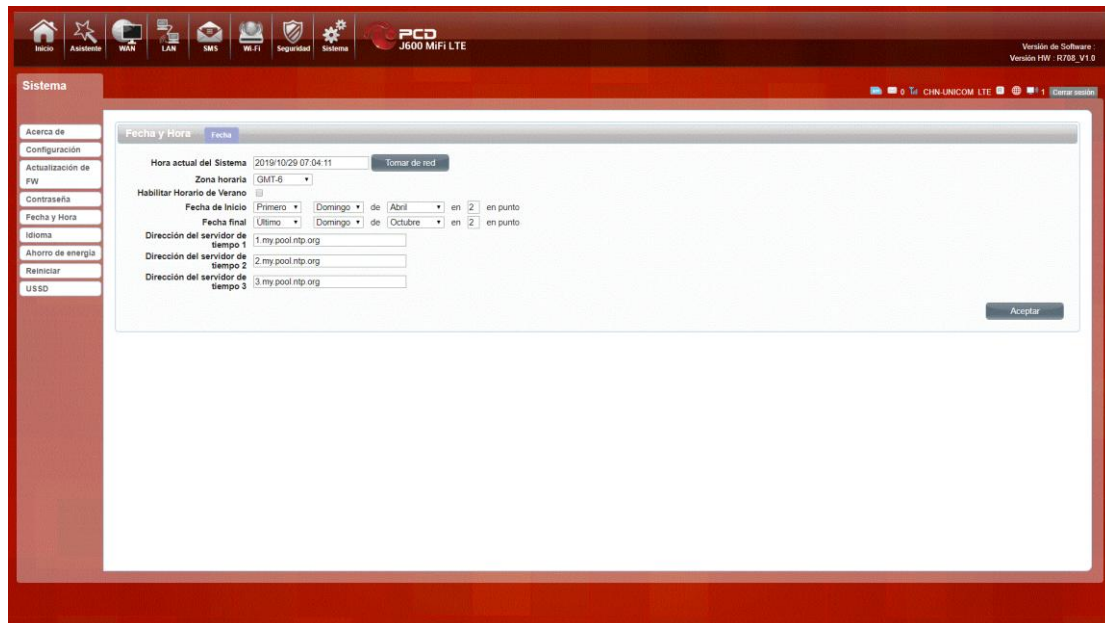
Select the file to update the software

4. Password



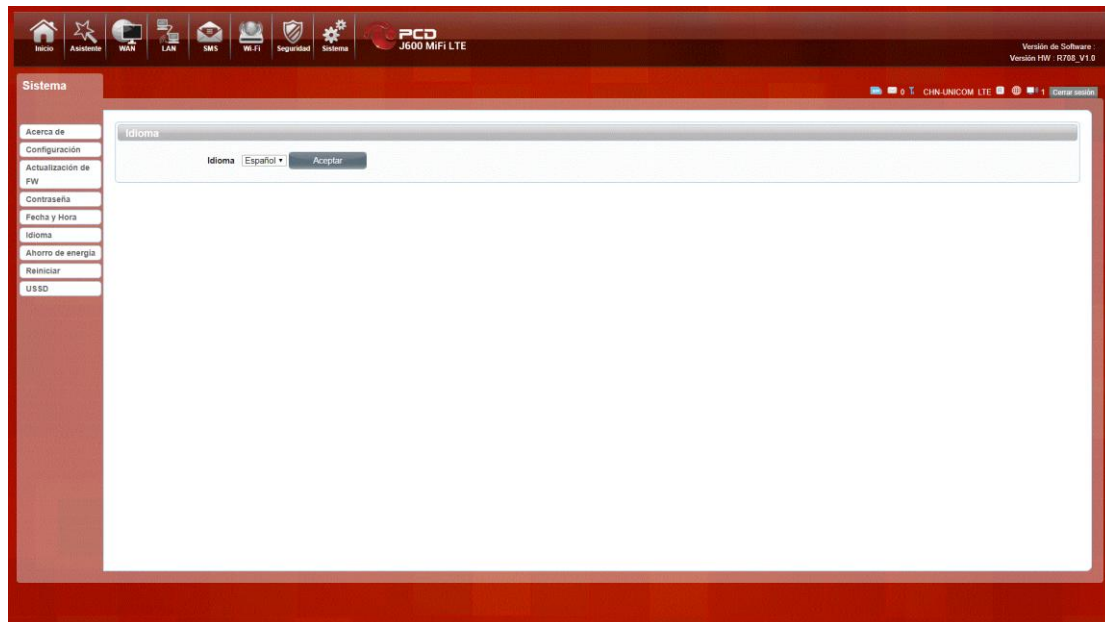
Modify the login password for administrator interface. Also you can setting the time to logout the UI automatically.

5. Date and Time



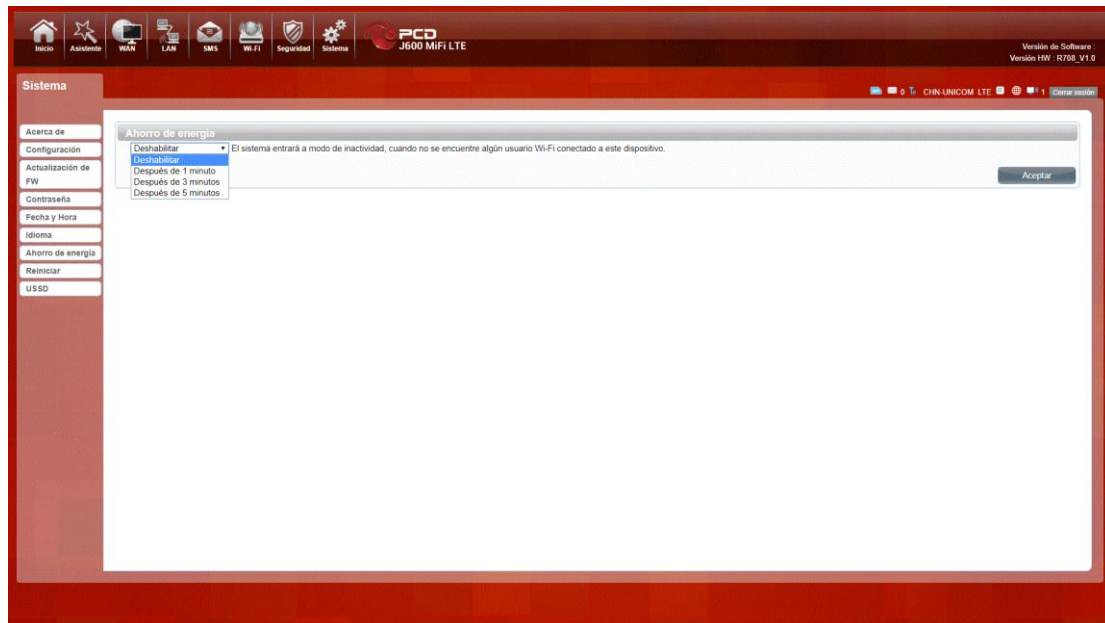
You can synchronize the time with the host , you can also select the time zone

6. Language



You can change the UI language in this page.

7. Power saving

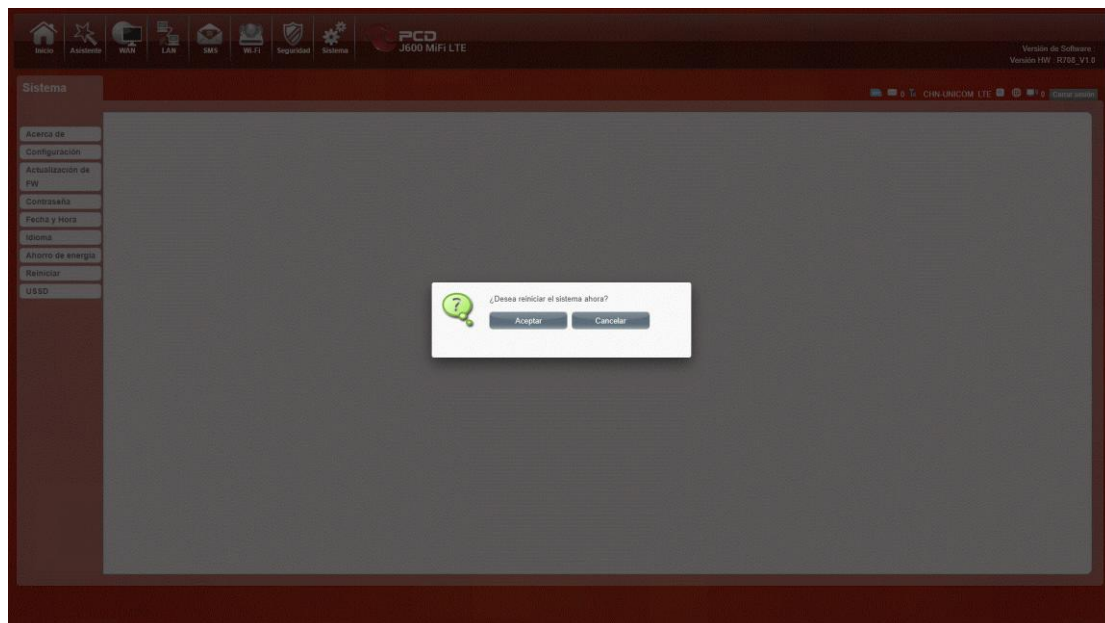


You can change the time of sleep mode or deep sleep mode. In this page you also can Disable the Power saving function.

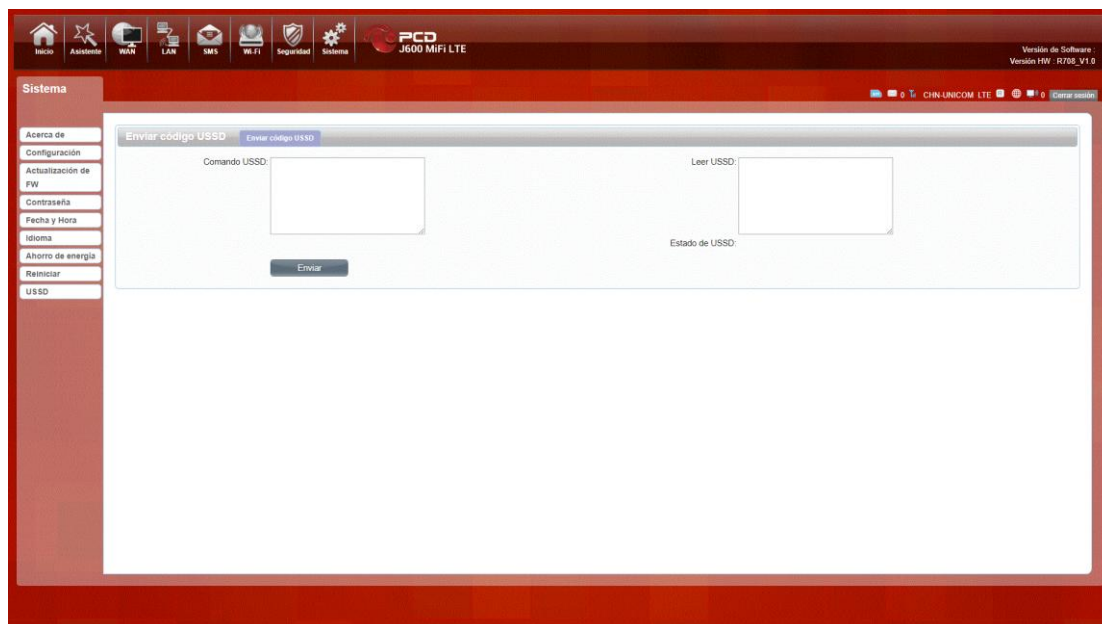
Sleep mode: System will enter into the sleep mode, when there is no Wi-Fi client connected to this device.

Deep sleep mode: System will enter into deep sleep mode, when there is no Internet access and no Wi-Fi client connected to this device.

8. Reboot



9. USSD



Safety Warning

Caution:RISK OF EXPLOSION IF BATTERY IS REPLACED BY AN INCORRECT TYPE.DISPOSE OF USED BATTERIES ACCORDING TO THE INSTRUCTIONS

NOTICE:

This device complies with Part 15 of the FCC Rules.

Operation is subject to the following two conditions:

- (1) this device may not cause harmful interference, and
- (2) this device must accept any interference received, including interference that may cause undesired operation.

NOTICE:

Changes or modifications made to this equipment not expressly approved by (PCD, LLC) may void the FCC authorization to operate this equipment.

NOTE:

This equipment has been tested and found to comply with the limits for a Class B digital device, pursuant to Part 15 of the FCC Rules. These limits are designed to provide reasonable protection against harmful interference in a residential installation. This equipment generates, uses and can radiate radio frequency energy and, if not installed and used in accordance with the instructions, may cause harmful interference to radio communications. However, there is no guarantee that interference will not occur in a particular installation. If this equipment does cause harmful interference to radio or television reception, which can be determined by turning the equipment off and on, the user is encouraged to try to correct the interference by one or more of the following measures:

- Reorient or relocate the receiving antenna.
- Increase the separation between the equipment and receiver.
- Connect the equipment into an outlet on a circuit different from that to which the receiver is connected.
- Consult the dealer or an experienced radio/TV technician for help.

SAR Information:

The SAR limit adopted by USA (FCC) is 1.6 Watts/kilogram (W/kg) averaged over one gram of tissue. Device types (**FCC ID: 2ALJJJ600**) has also been tested against this SAR limit. The highest SAR value reported under this standard during product certification for the body is **1.368** W/kg. This device was tested for typical body-worn operations with the back of the device kept 10 mm from the body. To maintain compliance with FCC RF exposure requirements, use accessories that maintain 10 mm separation distance between the user's body and the back of device. The use of belt clips, holsters and similar accessories should not contain metallic components in its assembly. The use of accessories that do not satisfy these requirements may not comply with FCC RF exposure requirements, and should be avoided.