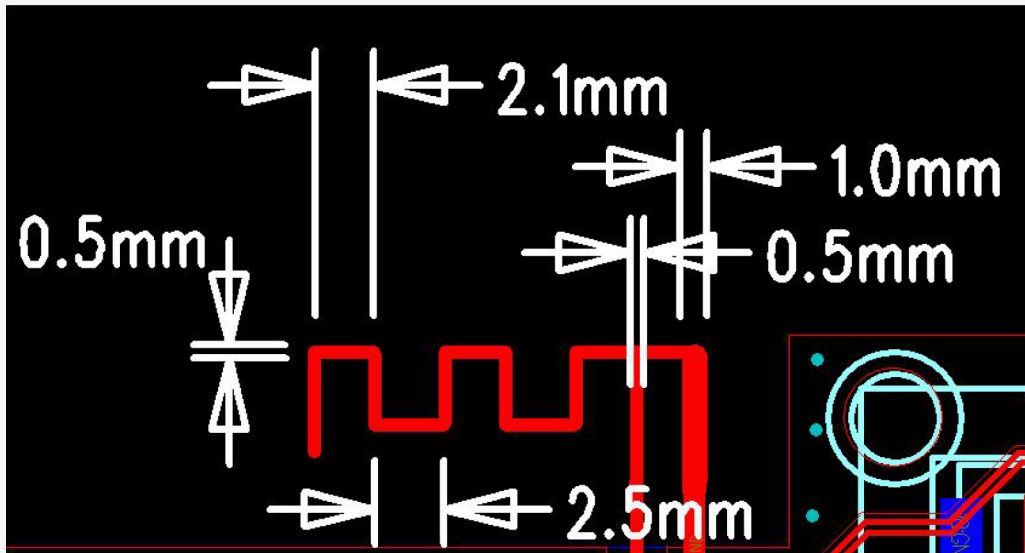


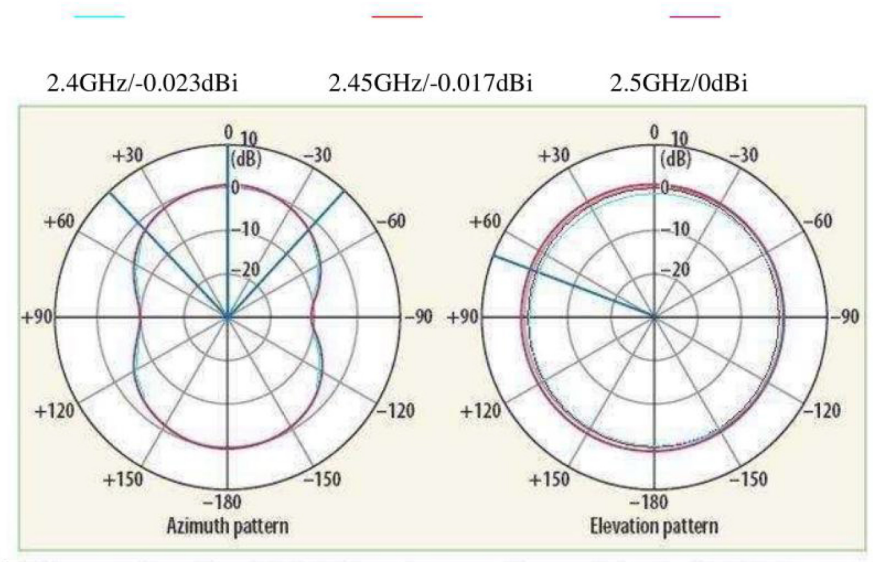
Specification: 2.4GHz, 0dBi max. L=34.3mm



RF Antenna Assembly

SPEC: 2.4~2.5GHz

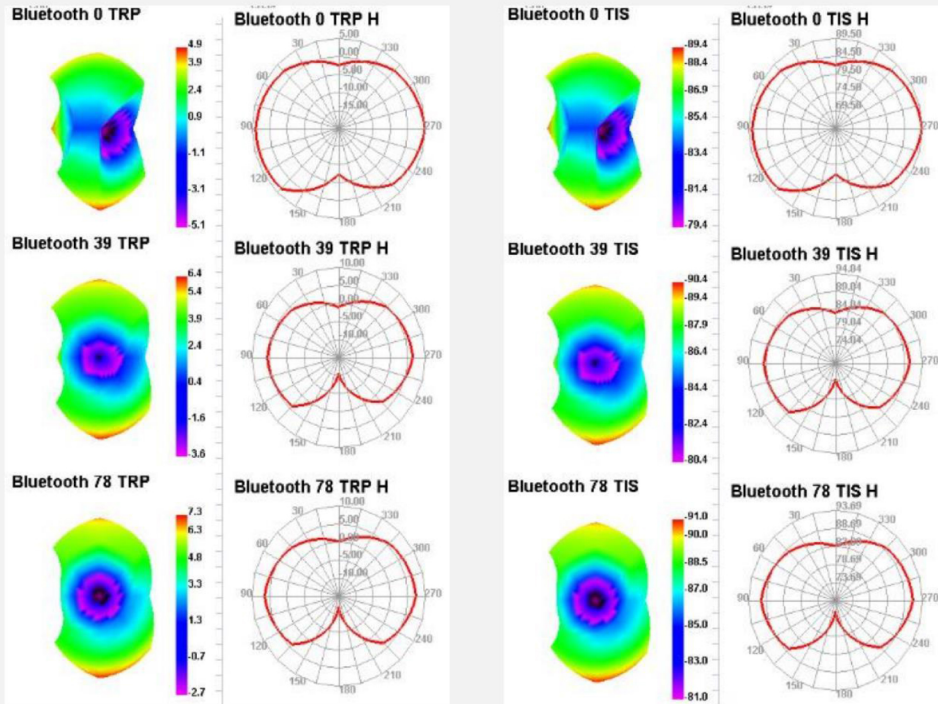
H Plane



Caution:

This is a PCB printed antenna, since metal will attenuate the signal of antenna, grounded and wiring on the bottom of the antenna PCB

## OTA ACTIVE 3D APPLE GRAPHICS



Type: Onboard PCB antenna

Model number: 2.4GHz, 0dBi max, L=34.3mm

Manufacturer: Shenzhen Jialide Technology Co. LTD