

13.56MHz RFID Antenna Description

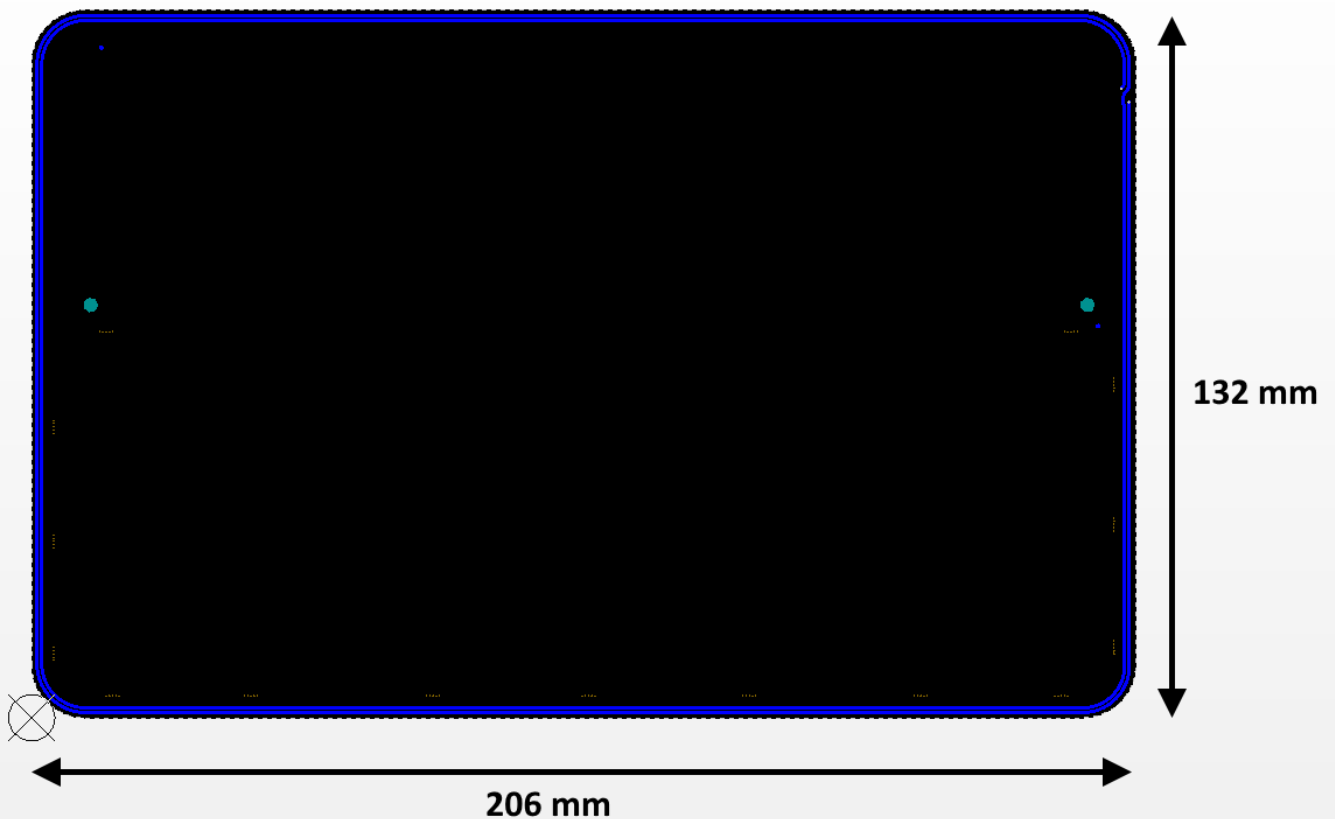
Antenna type	Integral, PCB track loop
Manufacturer	Eccel Technology Limited
Gain	N/A
Frequency of operation	13.553 - 13.567MHz 13.56MHz center frequency
Type of modulation	100% ASK
Channels, Bandwidth, Spacing	N/A

The RFID antenna was designed by Eccel Technology Limited. The antenna is an integrated part of the main electronics board and it's made from the PCB tracks.

This communication feature is implemented by magnetic induction in a very near field environment and antenna gain information is not required to be declared.

Dimensions are shown in the picture below.

Dimensions



Return Loss, SWR, Smith Chart

