



**BROWNING**  
Hunting Camera <sup>®</sup>

# CELL CAMERA INSTRUCTION MANUAL



Thank you for purchasing a Browning Trail Camera. Our trail cameras are constructed of the finest workmanship and materials available. As hunters ourselves, we have designed our products to help you get the most of your time in the field. We hope you enjoy scouting game for years to come with your new Browning Trail Camera. Our customer service team is here to help you with any questions you may have operating or setting up your new trail camera. Our representatives are available Monday through Friday from 9am to 5pm CST.



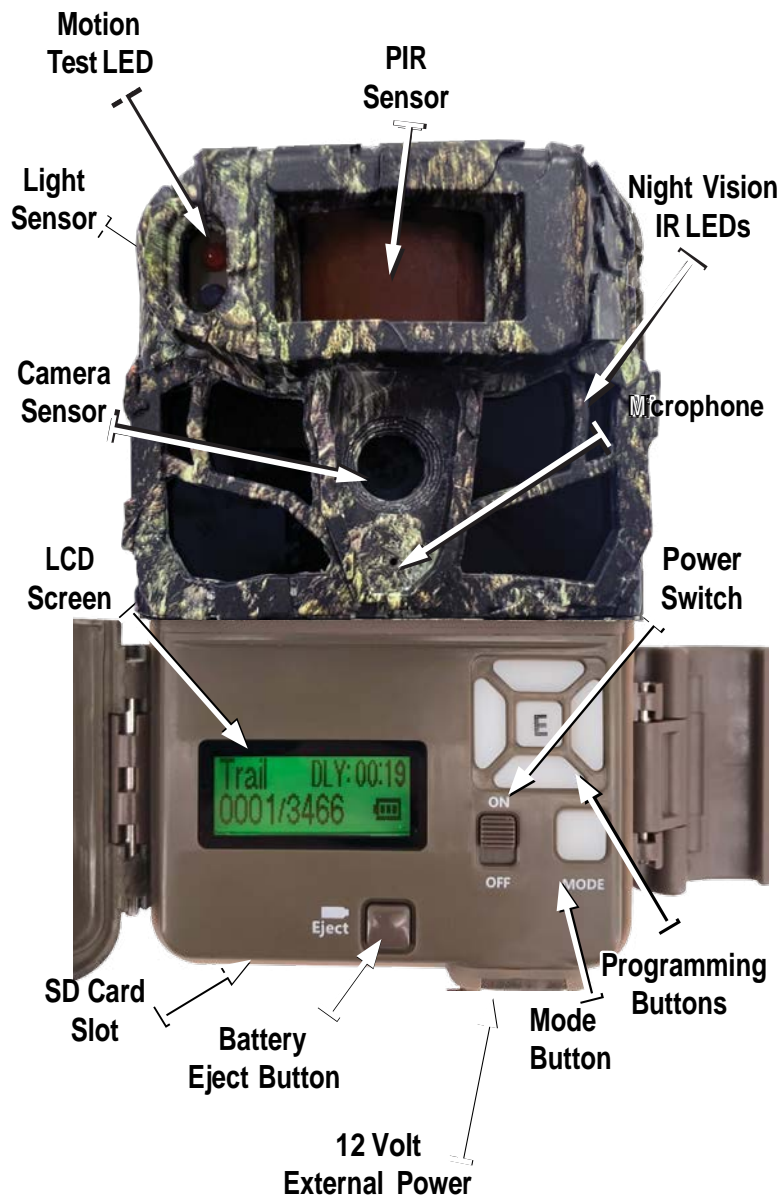
**Toll Free Customer Service: 1.888.618.4496**  
**Customer Service: info@browningtrailcams.com**

## CAMERA CONTENTS

Your 4G Browning Defender Vision camera includes pre installed SIM cards for ATT or Verizon activation, 6 ft. Tree Strap and an instruction manual .



## CAMERA DIAGRAM



## BATTERY & SD CARD INSTALLATION

You will need to provide and install a good quality card. The best brands of SD cards are Browning branded cards, Sandisk or Kingston branded cards. Your new camera will accept SD cards from 8GB-512GB.

Insert your SD card into the SD card slot in the camera.

Release the battery tray by pressing the Battery Eject button. The tray will eject about 1/2". With a slight pull, the battery tray will completely eject.

Install 8 AA Alkaline or Lithium batteries in the battery tray. Make sure you install the batteries with the correct polarity, following the markings on the battery tray. For optimal performance we recommend using Browning branded batteries, Energizer or Duracell. Slide the battery tray into the closed position.

## MOBILE APPS

Your Browning Defender Wireless camera will also work with a robust mobile app that is compatible with iOS and Android devices. Simply download the free Strike Force Wireless app from the App Store or Google Play. Your Strike Force wireless app allows you full control of all camera settings as well as the ability to view pictures and video clips\* uploaded by your cameras. \*If applicable



## STRIKE FORCE WIRELESS ACCOUNT SET UP

In order to start transmitting pictures from your Browning Defender Wireless camera, you will need to do a quick account set up. This can be done by installing the Strike Force Wireless App on your mobile device from either the Apple App Store, or Google Play. You can also set up an account on your laptop computer at

**[WWW.STRIKEFORCEWIRELESS.COM](http://WWW.STRIKEFORCEWIRELESS.COM)**

Simply follow the on screen menu to create a user account.

## CAMERA SETUP

Power on your Defender Vision camera. Press the MODE button. The camera setup menu will appear. Press the UP arrow key until the menu option "LTE Carrier" appears. Press the ENTER button. Use the UP or DOWN buttons to highlight either ATT or Verizon as your preferred cellular network. Press the ENTER button to confirm your selection.



A QR code will appear on the camera display screen. Open your Strike Force Wireless app on your mobile device. Simply choose the "ADD CAMERA" option in the App located as a '+' symbol in the upper right corner of the 'Cameras' screen. A QR code scanner will appear on your screen. Scan the QR code displayed on the camera screen with your mobile device.

Follow the on screen options for setting the data plan for your new camera.



# QUICK CELLULAR TEST

After you have installed batteries and an Empty SD card in your camera, set up an account at Strike Force Wireless, and finish your subscription plan details, its time to do a test transmission.

**STEP 1** - Power ON your camera, and take a test picture by pressing the ENTER button. The SD card meter on your camera will display the number of pictures taken.

**STEP 2** - On your camera navigate to the "LTE Test" option in the settings menu, and click on ENTER button to start the test.



Your camera will make connection with a cell tower and transmit the images to your Strike Force Wireless account. You can view the pictures on your laptop or mobile app. Your camera screen will display the cellular signal strength. If your camera registers the cell tower strength low, you may need to relocate the camera to an area with a stronger signal.

Upon a successful image transmission your images will appear in your image inbox within a couple of minutes. Remember to refresh your app (by swiping down on the screen) or refresh your computer screen to see the images.

When you set up your camera in the field, the camera will automatically connect to the Strike Force Wireless servers and connect to your account. The camera will update its settings and communication times with the ones set in the camera settings menu of your online account or mobile app.



# BASIC CAMERA SETUP AND OPERATION

## TURNING THE CAMERA ON

When the trail camera is powered ON, the display will light up and provide the following information. Camera mode: TRAIL as a default. This setting will take photos. The countdown delay, battery meter and number of pictures taken.

## ENTERING THE SETUP MENU

From the Home Screen press the Mode Button once to enter the cameras SETUP MENU.

## SCROLLING THROUGH THE SETTINGS

In the Setup Menu, the camera's Up and Down Arrow Buttons are used to scroll through the cameras available settings. If you use the Down Arrow Button you will scroll through the settings in the order they are outlined in the cameras instruction manual below.

## CHANGING A SETTING

To change a setting press the Enter Button; this unlocks the setting to allow for changes. Use the cameras Arrow Buttons to scroll through the options for that setting. Locate the new option and to select press the Enter Button; this locks the change in and returns the camera to the Setup Menu. Continue this process to make all changes. Once all changes have been completed press the Mode Button to return the camera to the Home Screen. From this point the camera can be left powered on to start performing or it can be powered off to be used later.

# CAMERA SETTINGS INFORMATION

**Date/Time:** The day, month, year and time can be set here.

## OPERATION MODE

**Trail Cam:** This setting will take still pictures of game in daylight and nighttime. This is the most widely used setting and works well for trails and feeding areas.

**Video:** This setting will take video clips of game in daytime and nighttime. Full HD video clips will be stored on the SD card for review. The camera will upload a picture from the video clip to your account. The entire video clip will not upload to your account.

## PHOTO QUALITY

**Options:** Low (2MP), Medium (4MP), High (8MP), Ultra (20MP)

## VIDEO QUALITY

High and Ultra are the options here, both video settings capture in 1920x1080 resolution @ 30 fps. The ULTRA setting has a lower compression rate than the HIGH setting.

## VIDEO LENGTH

**Options:** 5, 10, 20, 30 seconds, 1 and 2 minutes.

*Notes: To conserve battery power, your night videos are limited to a maximum time of 20 seconds regardless of the actual setting.*

## PHOTO DELAY

**Options:** 1, 5, 10, 20, 30 seconds, 1, 5, 10, 30 and 60 minutes.

The Photo Delay setting allows you to choose how much of a "timeout" there is between trigger events both with still pictures or videos.

## **MULTISHOT MODE OFF:**

**Off:** This is the default setting. The camera will only take 1 picture when triggered.

**Standard:** The options available are 2 – 8 shots in this mode. The shots will happen each trigger event in a burst 3 seconds apart.

**Rapid Fire:** The options available are 2 – 8 shots in this mode. The shots will happen each trigger event in a burst with only 0.3 seconds between each picture.

**TEMP UNIT** The temperature units can be displayed in Image Data Strip in either Fahrenheit or Celsius.

**CAMERA NAME** You can add a custom name for the camera. This option is limited to 10 characters.

**IMAGE DATA STRIP** Your trail camera has an information bar that is printed at the bottom of each photo or video taken. This bar shows: Temperature, Moon phase, Date, Time and Camera Name.

**MOTION TEST** This feature helps you aim the camera at your target area. With the motion test turned on, simply walk around in your target area. When your presence is detected, a red LED on the front of the camera will flash.

**MOTION DETECT** You have the option to set the Motion Detection distance. Options are 60ft. or 80ft.

**BATTERY TYPE** To achieve the most accurate battery level reading, the camera can be adjusted to monitor either Alkaline, Lithium or Rechargeable batteries.

**TRIGGER SPEED** Your camera can be configured to a custom trigger speed of Normal (0.7 seconds) or Fast (0.13 seconds). We recommend Normal for areas where game is moving slowly, such as feeding areas. The Fast setting is typically used for monitoring trails.

**DEFAULT SETTINGS** This selection returns your camera back to the factory options for each setting. (Cell carrier option will not reset)

**SMART IR VIDEO** Smart IR Video is a feature that will allow a daytime video clip to keep recording as long as the camera detects movement during filming. If the subject stands still in front of the camera and the camera does not detect movement, the camera will end the video clip. The maximum record time for a video clip using this feature is 5 minutes.

**SD MANAGEMENT** By turning this option on, the camera will erase the oldest pictures or videos on the SD card when it becomes full. This allows for the camera to continue taking pictures or videos if you can't get to the field to swap out the SD card.

**DELETE ALL** By selecting Delete All, every image on the SD card is erased permanently. This function also keeps the card formatted to the trail camera. We suggest using the Delete All function and reformat the SD card each time it is installed in the camera for use.

## **IR FLASHPOWER**

**LONG RANGE:** This option has a flash range of 100' and uses an invisible infrared flash.

**ECONOMY:** This is a great battery saving setting if you are in a heavily wooded environment, where flash distance is limited.

**LTE FEATURE** This setting allows you to turn the cellular function of the camera on or off. Leave the setting in the "LTE Enable" setting to enable cellular communication.

**LTE INFO** This menu option will display the LTE, ICCID and LTE FW version.

**LTE CARRIER** This menu item displays the cellular carrier for this device.

**NETWORK STATUS** This menu item displays the signal strength.

**SERVER STATUS** This menu item displays the subscription quota.

**LTE TEST** This feature will allow you to run a cellular test in the field. Simply Press the ENTER button, and your camera will make a cellular connection.

**LTE CARRIER** This menu will re display the QR code for activating the camera on the Strike Force Wireless app.

**ANTI THEFT** The Anti Theft system alerts you when your camera is experiencing unexpected movement in the field. If your camera detects it is being moved, it will automatically capture photos, and upload them with updated GPS coordinates to your Strike Force Wireless account. This feature can be enabled or disabled in your Strike Force Wireless app.

**ANTI THEFT SENSITIVITY** The sensitivity setting for the Anti Theft trigger can be set to LOW, MEDIUM or HIGH. Low sensitivity works for most situations.

**CAPTURE TIMER** This setting allows you to set a certain period of time for the camera to capture images. The default setting is 24 hour, continuous monitoring. You can set the START and STOP times as desired, if you want to skip a certain time period. The capture timer is most used in instances where a user may want to pause picture or video recording of events during the day, and only record night time activity.

**FIRMWARE UPGRADE** The Firmware Upgrade option allows you to upgrade your cameras firmware. If a firmware upgrade is available for your camera it will be posted on our website, along with detailed instructions for upgrading. [www.browningtrailcameras.com/customer-service](http://www.browningtrailcameras.com/customer-service)

## WARRANTY

Your Browning Trail Camera is covered by a limited warranty of one year from the date of purchase. We warrant that your camera will be free from defects in workmanship and materials when operated in normal use and conditions. This warranty will allow Browning Trail Cameras, at its discretion, to repair the product or replace with a new or refurbished unit.

### Warranty Limitations:

This warranty does not cover cameras that have been:

1. Neglected or Abused (including, but not limited to water damage caused by submersion, battery leakage or improper storage.)
2. Modifications or repairs by unauthorized agents.
3. Damaged cameras that have cracked or broken outer cases due to excessive impact, heat or mishandling.
4. Damages caused by wild animals.

## Warranty Service

In the event service is needed contact Browning Trail Camera's Customer Service at 888.618.4496. Our knowledgeable agents can help troubleshoot any issues and answer any questions. In the event your camera needs to be returned our agents will advise all instructions. You will also need your original receipt or proof of purchase for warranty service. You are responsible for the packaging and shipping cost of your cameras to our warranty facility.

## FCC INFORMATION

This device complies with Part 15 of the FCC Rules. Operation is subject to the following two conditions: (1) this device may not cause harmful interference, and (2) this device must accept any interference received, including interference that may cause undesired operation.

This equipment has been tested and found to comply with the limits for a Class B digital device, pursuant to part 15 of the FCC Rules. These limits are designed to provide reasonable protection against harmful interference in a residential installation. This equipment generates, uses and can radiate radio frequency energy and, if not installed and used in accordance with the instructions, may cause harmful interference to radio communications. However, there is no guarantee that interference will not occur in a particular installation. If this equipment does cause harmful interference to radio or television reception, which can be determined by turning the equipment off and on, the user is encouraged to try to correct the interference by one or more of the following measures:

- t Reorient or relocate the receiving antenna.
- t Increase the separation between the equipment and receiver.
- t Connect the equipment into an outlet on a circuit different from that to which the receiver is connected.
- t Consult the dealer or an experienced radio/TV technician for help.

FCC Radiation Exposure Statement: This equipment complies with FCC radiation exposure limits set forth for an uncontrolled environment. In order to avoid the possibility of exceeding the FCC radio frequency exposure limits, Human proximity to the antenna shall not be less than 20cm (8 inches) during normal operation.

***Any changes or modifications made to this device that are not expressly approved by Prometheus Group LLC may void the user's authority to operate the equipment.***



# MOBILE APP

Upon opening the mobile app you will be at the Main Page. On the Main Page the thumbnails from all cameras on your plan will be displayed and all of the apps functions can be accessed. Use the guide below to learn how to navigate the Strike Force Wireless app.

## SORTING AND FILTERING:

By using the Sorting Icon the thumbnails displayed on the Main Page can be sorted by Date, Time, Temperature, Pressure and Moon Phase.

*The default setting is Newest to Oldest.*

By using the Filter Icon the images on the Main Page can be filtered by camera and category.

## UPLOADING:

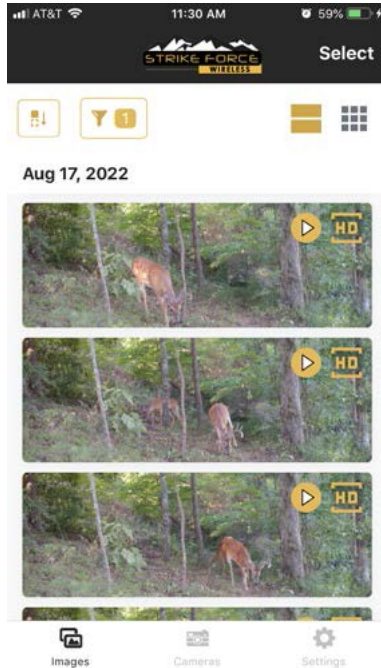
To upload the HD images for specific thumbnails press Select.

Once Select has been pressed a menu will appear at the bottom of the screen. You can select all of the thumbnails at once you would like to perform any of the following functions to:

**Tag:** By assigning a name to a thumbnail or image it can be categorized.

The categories can then be used to help filter on the Main Page.

**HD:** By requesting the full HD file you will be receiving the full HD quality images when the camera performs its next sync. NOTE: You must have subscribed to a data plan that includes HD image Uploads to use the HD upload feature.



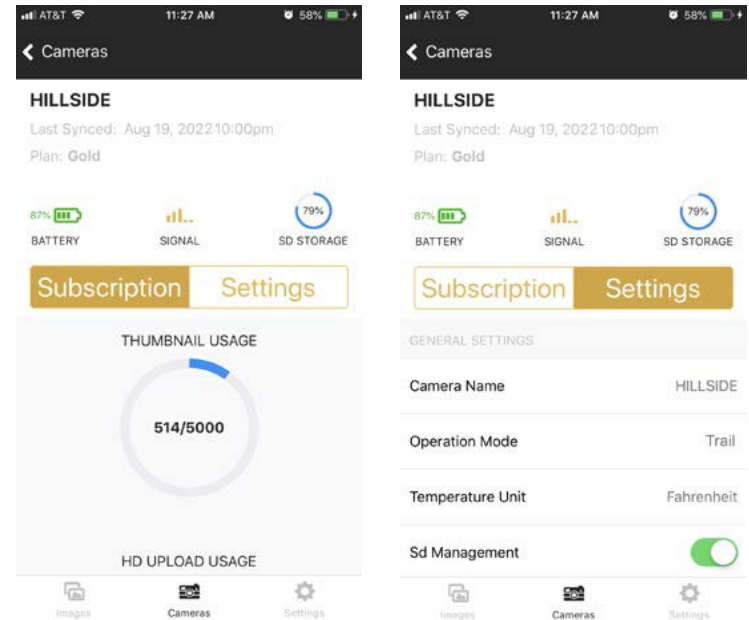
**Share:** Using the Share function allows you to share what your camera has captured.

**Delete:** Using the Delete function allows you to delete images, videos and thumbnails within the app.

*This does not delete the images and videos from the SD card in the camera.*

## PLAN USAGE AND CAMERA SETTINGS:

By selecting Cameras from the Main Page you will be taken to a page that shows each camera on your plan. Select a camera. Upon entering your Subscription information will be displayed such as the cameras battery level, signal strength and the SD card storage. The plan usage for the current period will also be listed.



When Settings is selected from this page you can view the cameras current settings as well as make changes.

*Any time settings are changed they will not go into effect until the cameras next scheduled sync time.*





**BROWNING**  
Hunting Camera <sup>®</sup>



**888.618.4496**

**WWW.BROWNINGTRAILCAMERAS.COM**

Manufactured and Distributed by  
Prometheus Group, LLC, Birmingham, AL

Browning Trademarks  
Licensed From Browning

