

Label Artwork and Location

Model:SF50

Label:

Product :cell phone signal booster
Model: SF50
Maximum Gain: Uplink:60 ± 2 dB
Downlink:60 ± 2 dB
Frequency Range(Band 13): Uplink:776-787MHZ
Downlink:746-757MHZ
Frequency Range(Band 12/17): Uplink:698-716MHZ
Downlink:728-746MHZ
Uplink:824-849MHZ
Frequency Range(Band 5): Downlink:869-894MHZ
Frequency Range(Band 4): Uplink:1710-1755MHZ
Downlink:2110-2155MHZ
Frequency Range(Band 2): Uplink:1850-1910MHZ
Downlink:1930-1990MHZ
FCC ID: 2ALGR-SF50

This is a CONSUMER device.

BEFORE USE you **MUST REGISTER THIS DEVICE** with your wireless provider and have your provider's. Most wireless providers consent to the use of signal boosters. Some providers may not consent to the use of this device on their network. If you are unsure, contact your provider.

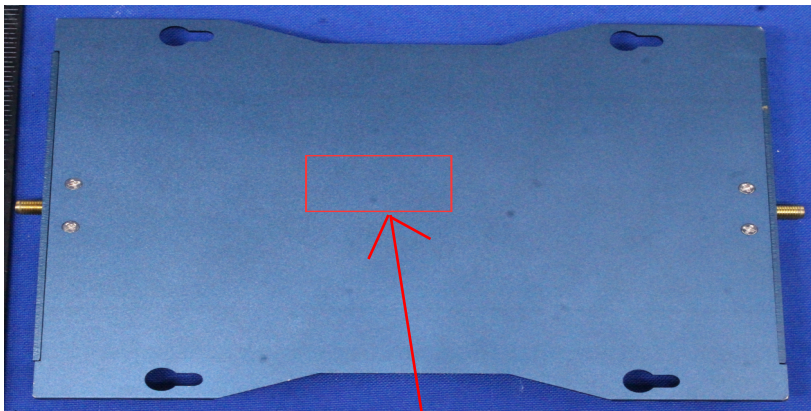
You **MUST** operate this device with approved antennas and cables as specified by the manufacturer. Antennas **MUST** be installed at least 20 cm(8 inches) from any person.

You **MUST** cease operating this device immediately if requested by the **FCC** or a licensed wireless service provider.

WARNING E911 location information may not be provided or may be inaccurate for calls served by using this device.

This device may be operated **ONLY** in a fixed location for in-building use.

Size:L*W=70*50mm



Location