

Test Setup Photos

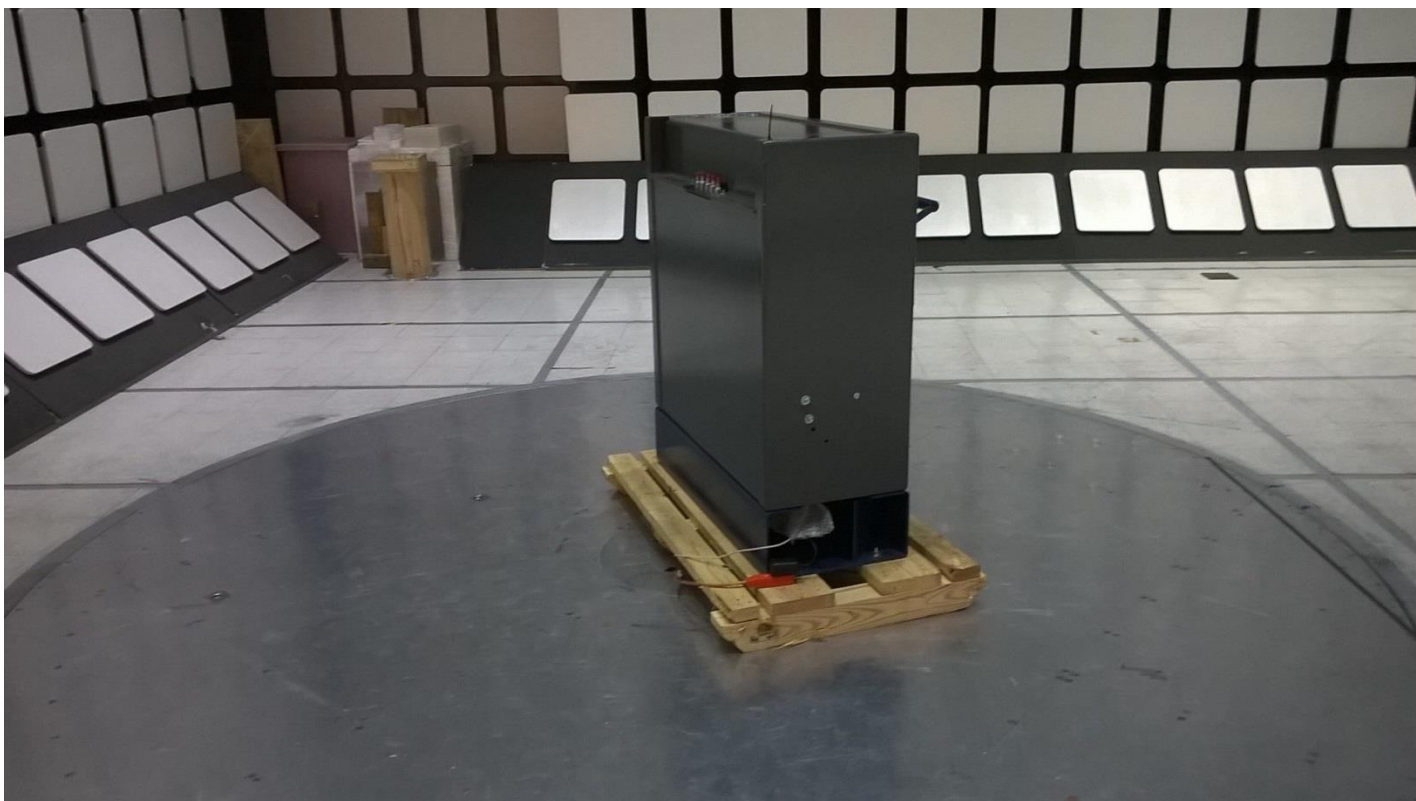


Figure 1 - Radiated Emissions Test Setup, 10MHz - 1GHz

Note: the EUT is intended to be installed into a larger enclosure. It was tested at a height of 13 cm, which is close to the height of a typical installation. See the cover page of the user's manual for an example.

Test Setup Photos



Figure 2 - Radiated Emissions Test Setup, 30MHz - 1GHz

Test Setup Photos



Figure 3 - Conducted Emissions Test Setup

Test Setup Photos



Figure 4 - Conducted Emissions Test Setup

Test Setup Photos

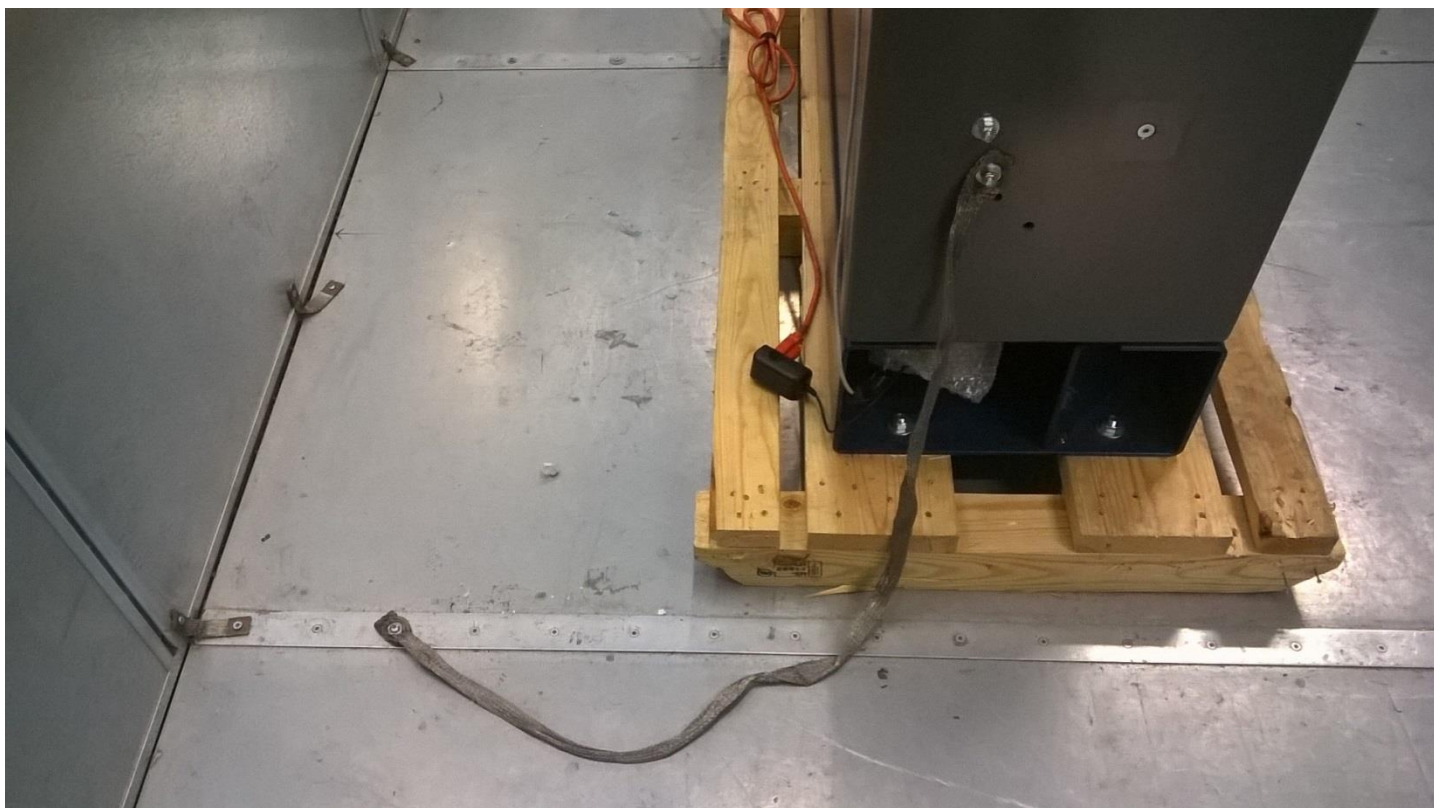


Figure 5 - Conducted Emissions Test Setup