

FCC ID: 2ALEPT0007871
IC ID: 22504-T0007871

EUT Internal Photo

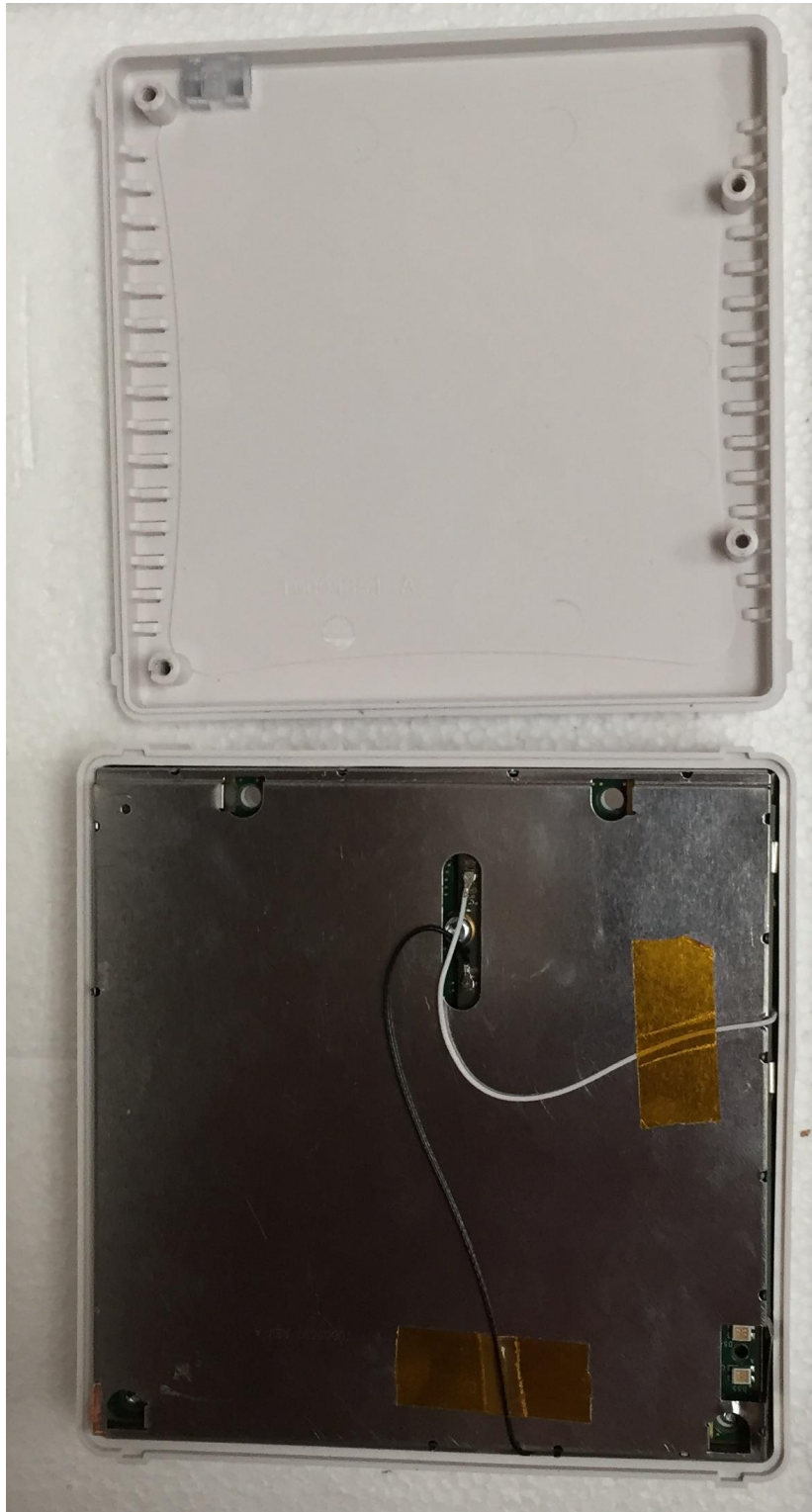
EUT Mechanical: top cover with out PCB



FCC ID: 2ALEPT0007871
IC ID: 22504-T0007871

EUT Internal Photo

EUT Mechanical: top cover off

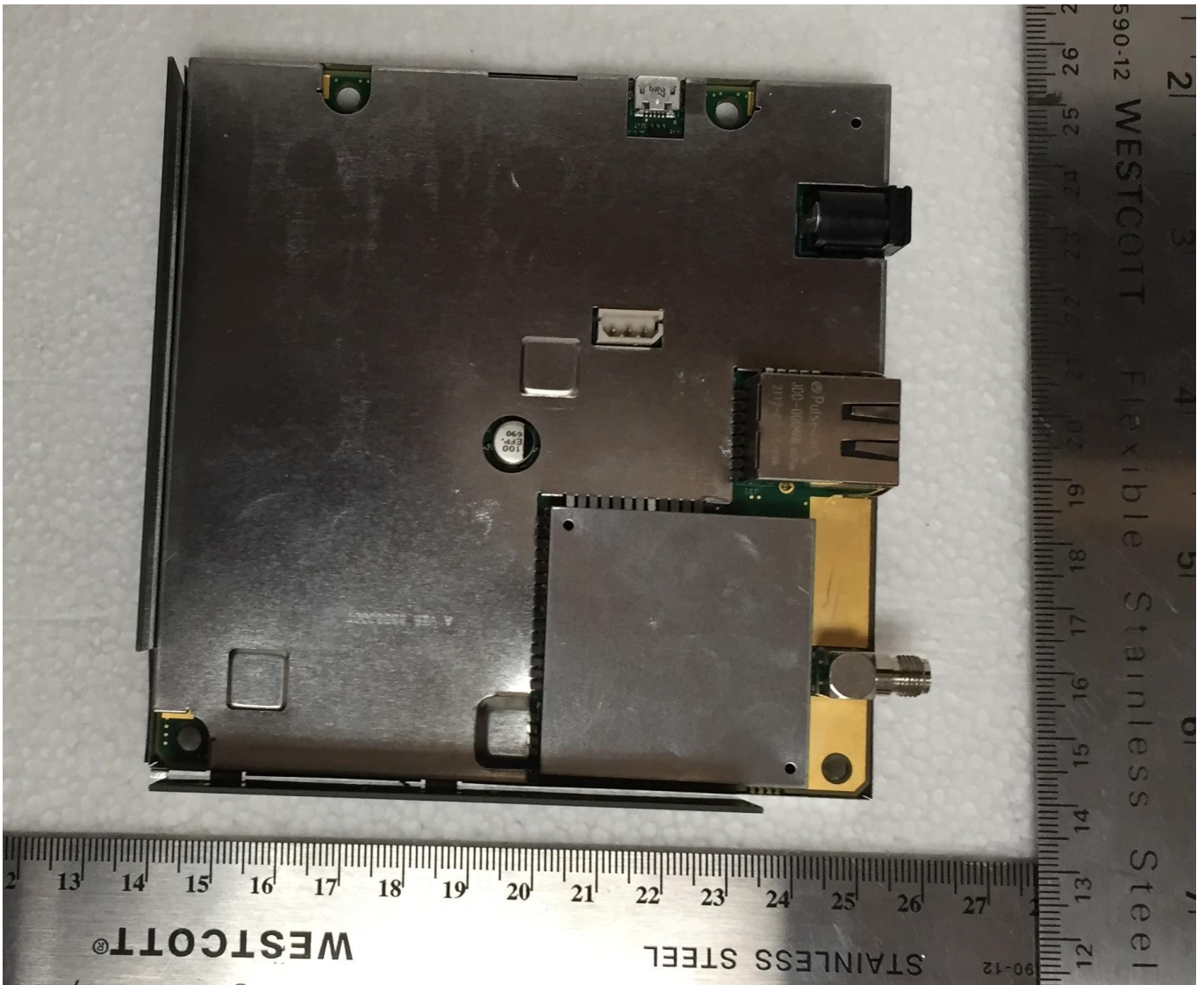


FCC ID: 2ALEPT0007871

IC ID: 22504-T0007871

EUT Internal Photo

EUT: PCBA Bottom view with shield

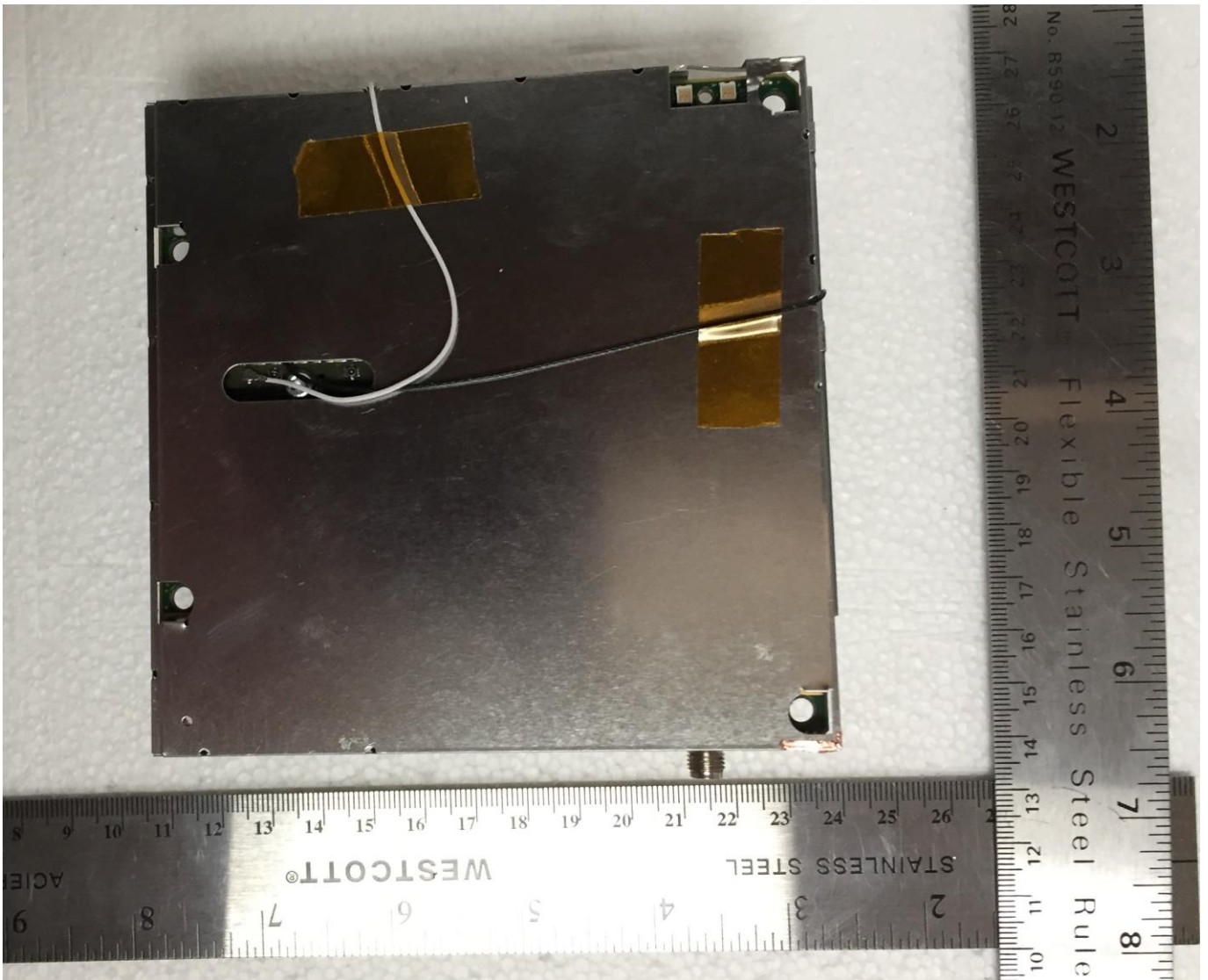


FCC ID: 2ALEPT0007871

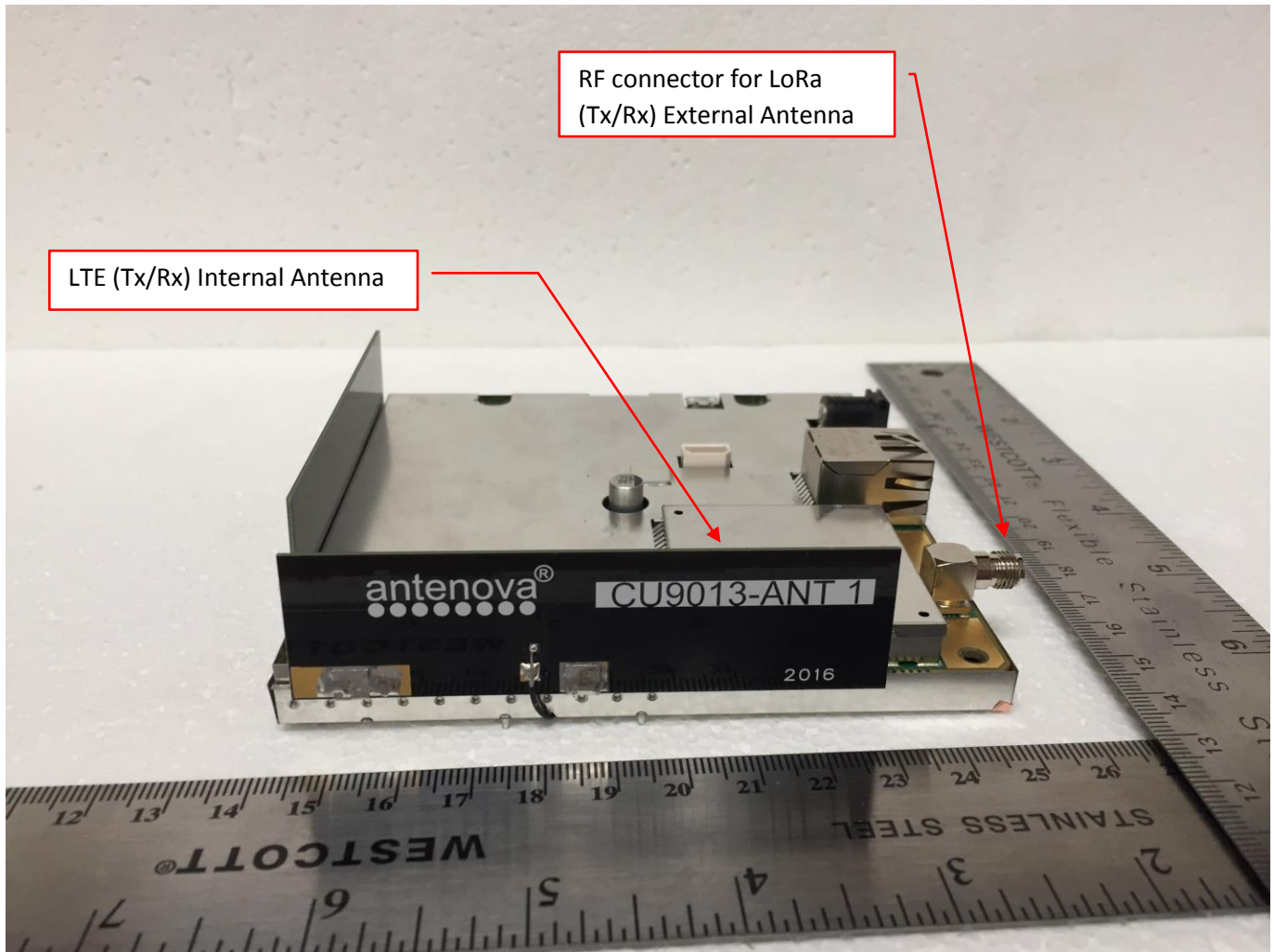
IC ID: 22504-T0007871

EUT Internal Photo

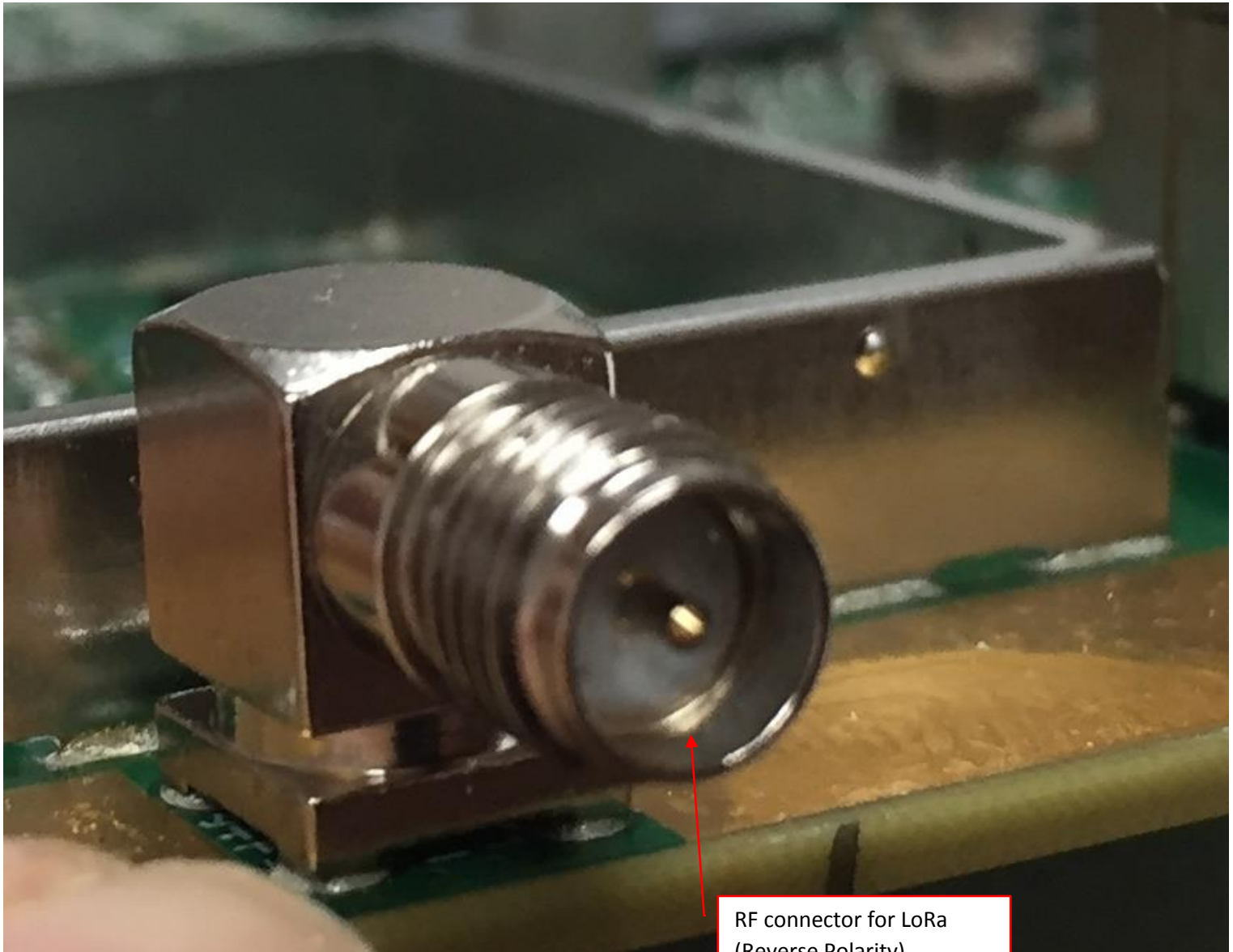
EUT: PCBA Top view with shield



EUT PCB: View with Antenna-1 View

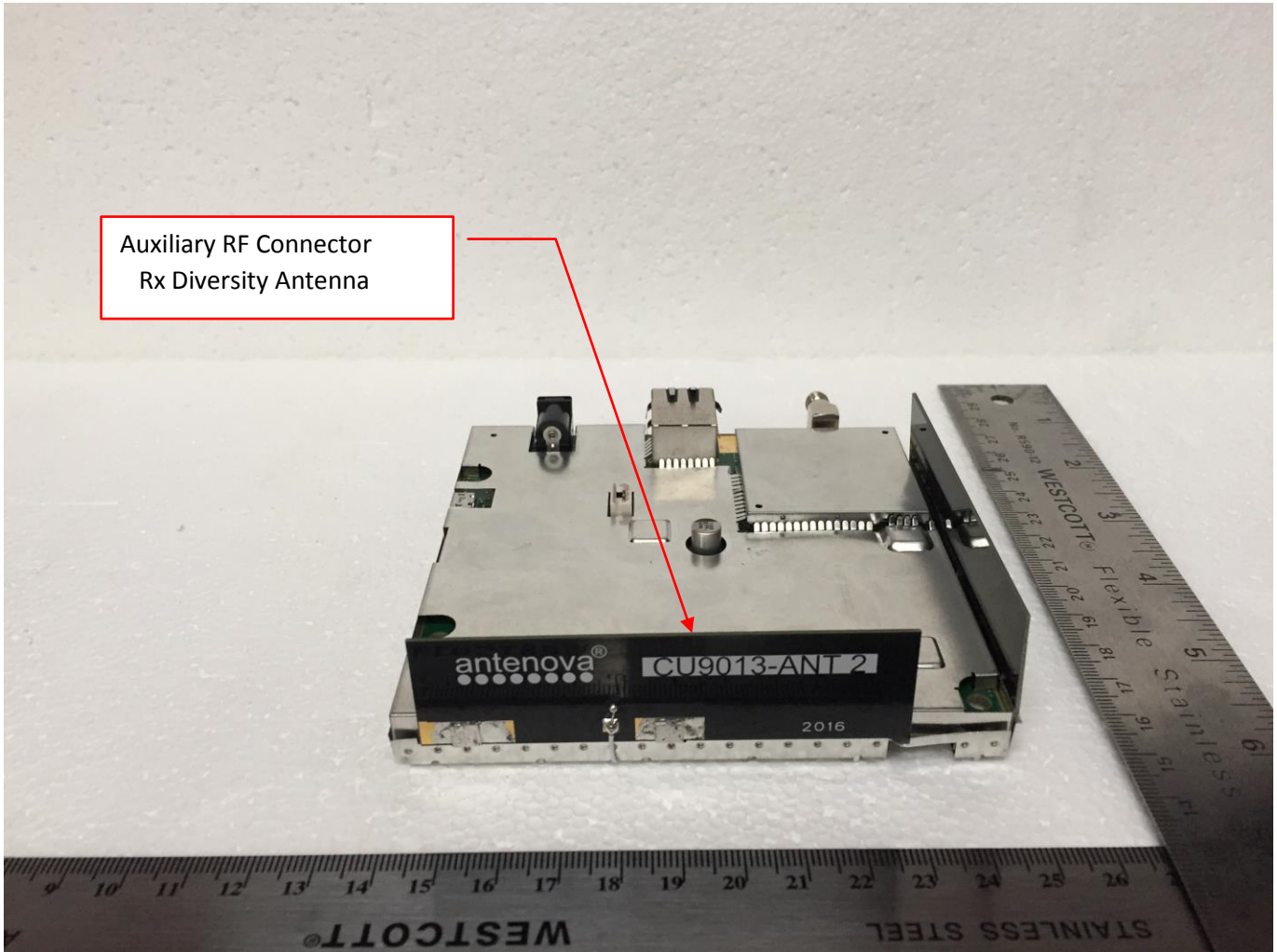


EUT PCB: RF connector for LoRa (Close View)



RF connector for LoRa
(Reverse Polarity)

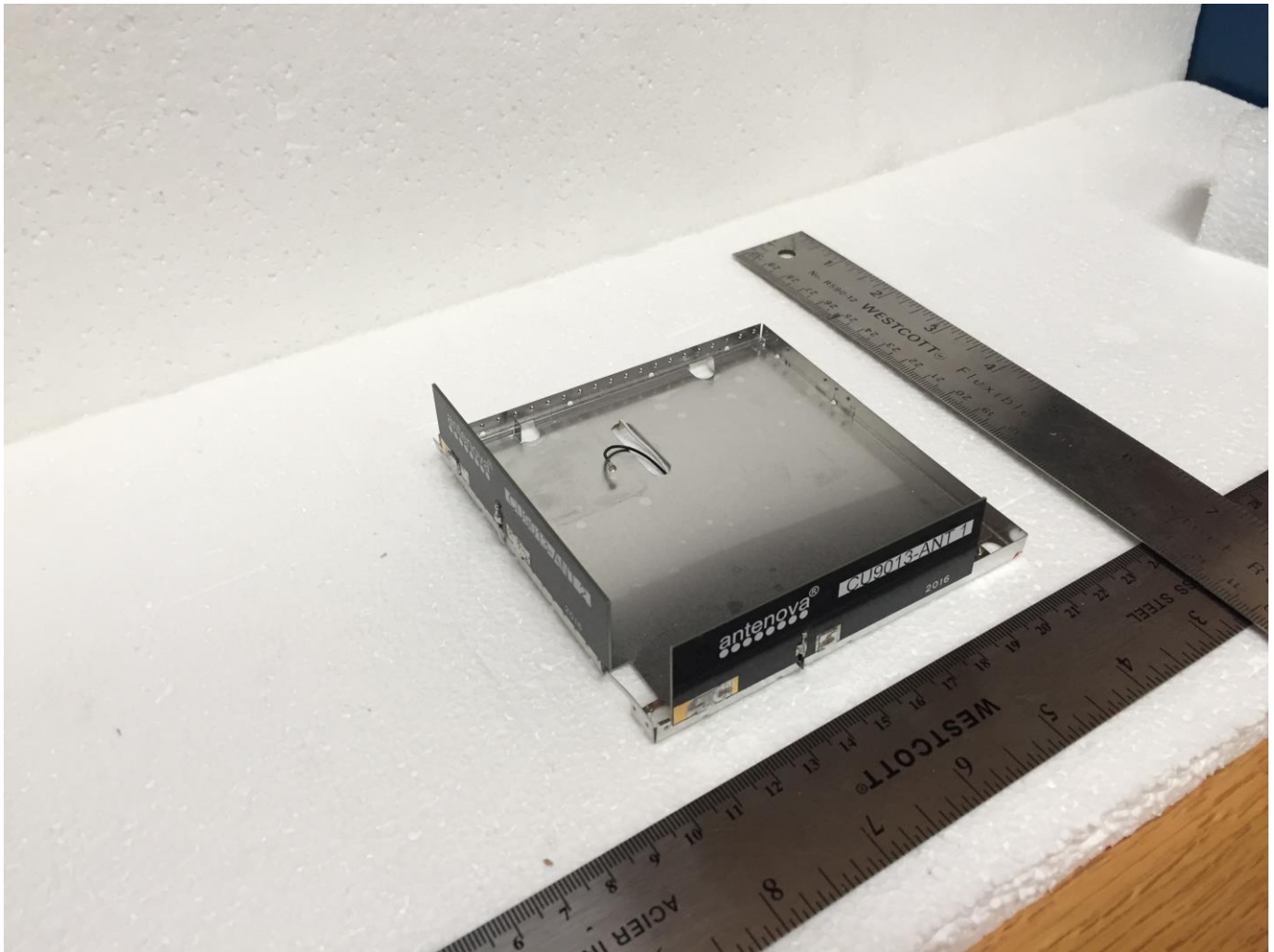
EUT PCB: View with Antenna-2 View



FCC ID: 2ALEPT0007871
IC ID: 22504-T0007871

EUT Internal Photo

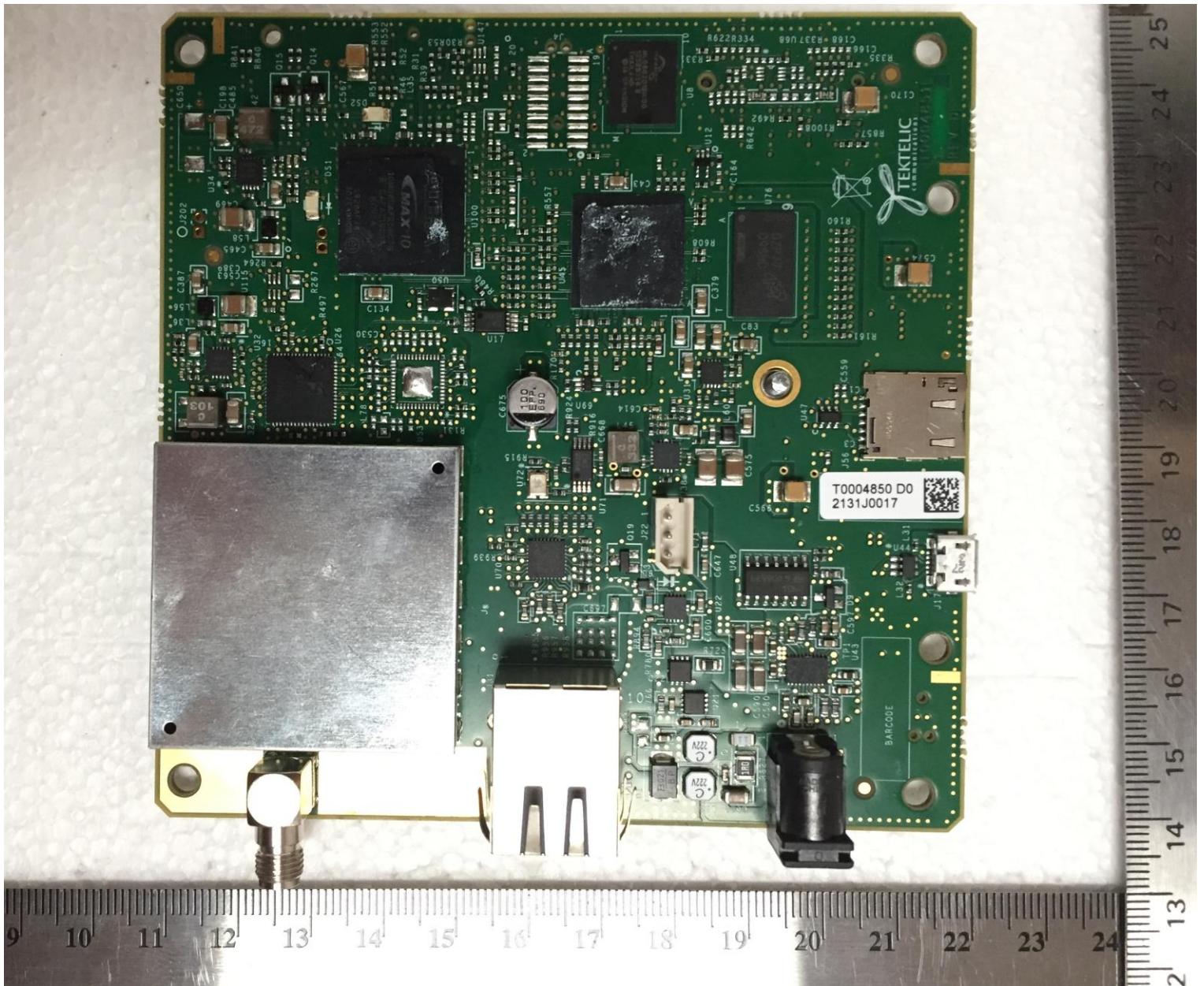
Antennas mounting view on Shield



FCC ID: 2ALEPT0007871
IC ID: 22504-T0007871

EUT Internal Photo

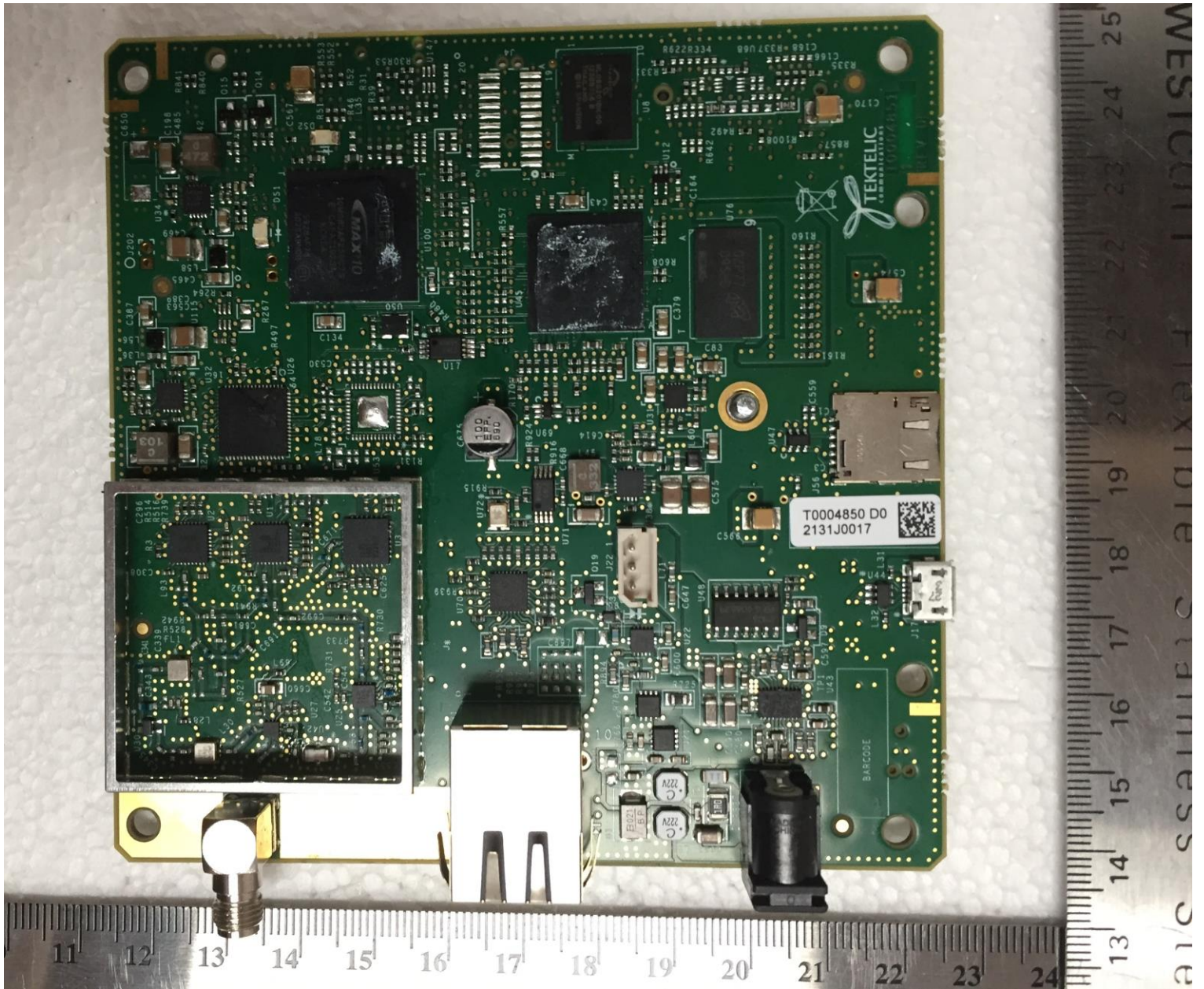
EUT: PCBA with LoRa Module (with Shield) Top view



FCC ID: 2ALEPT0007871
IC ID: 22504-T0007871

EUT Internal Photo

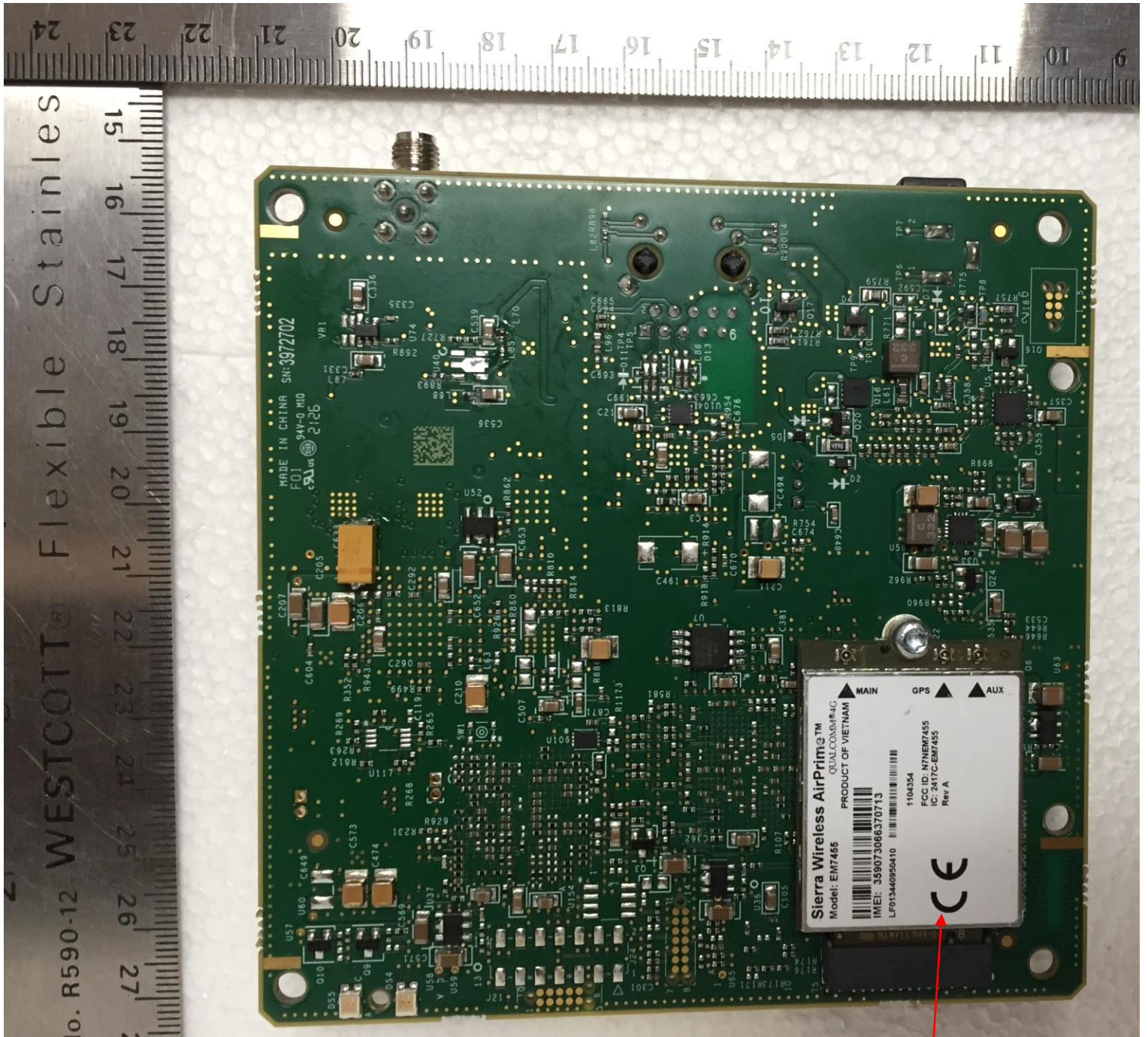
EUT: PCBA with LoRa Module (without Shield) Top view



FCC ID: 2ALEPT0007871
IC ID: 22504-T0007871

EUT Internal Photo

EUT: PCBA with GSM Module Bottom view



Sierra Wireless AirPrime™
QUALCOMM®
PRODUCT OF VIETNAM

Model: EM7455

1104354
FCC ID: N7NEM7455
IC: 2417C-EM7455
Rev. A

CE

Pre-Certified Module