

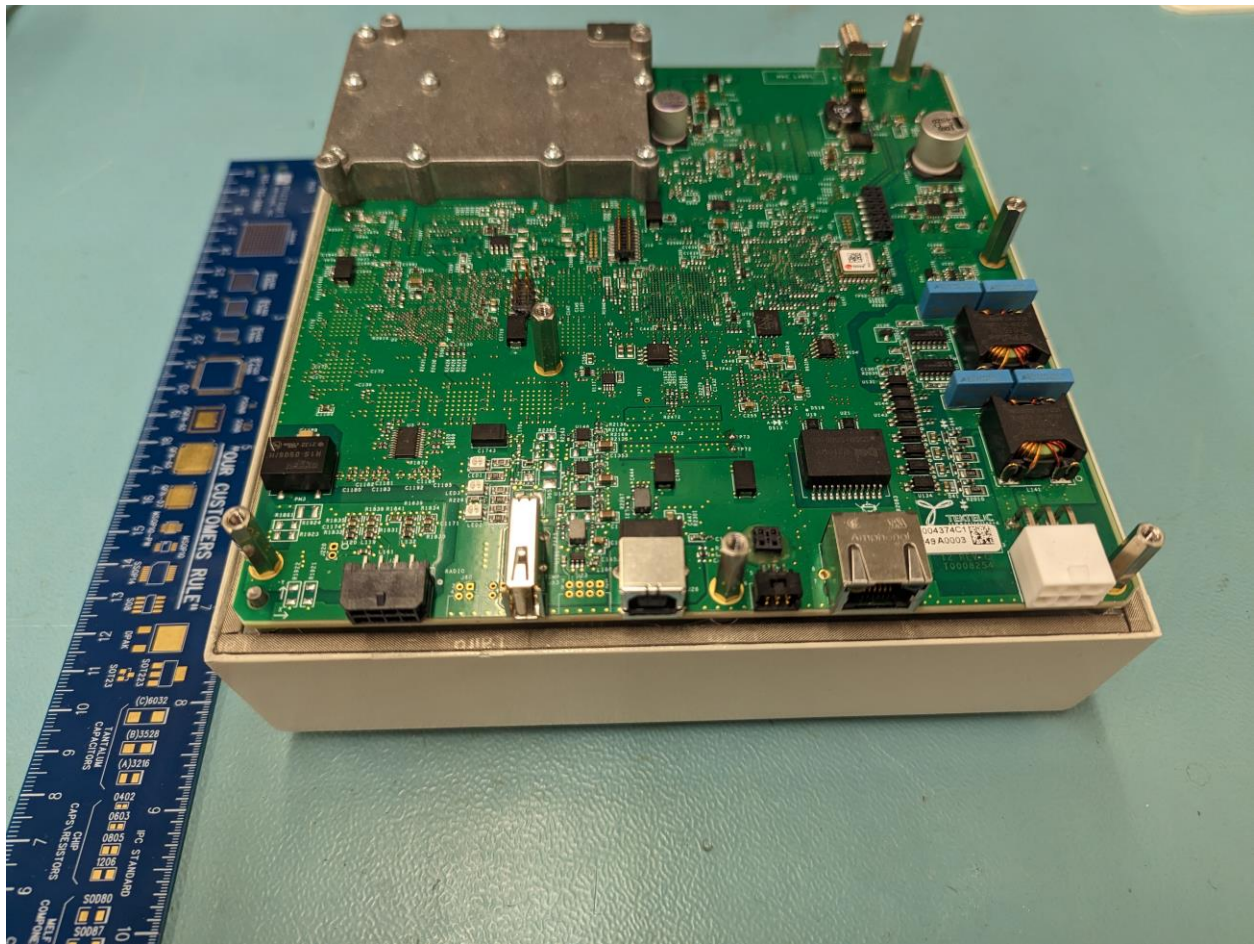
FCC ID: 2ALEPT0004438

IC: 22504-T0004438

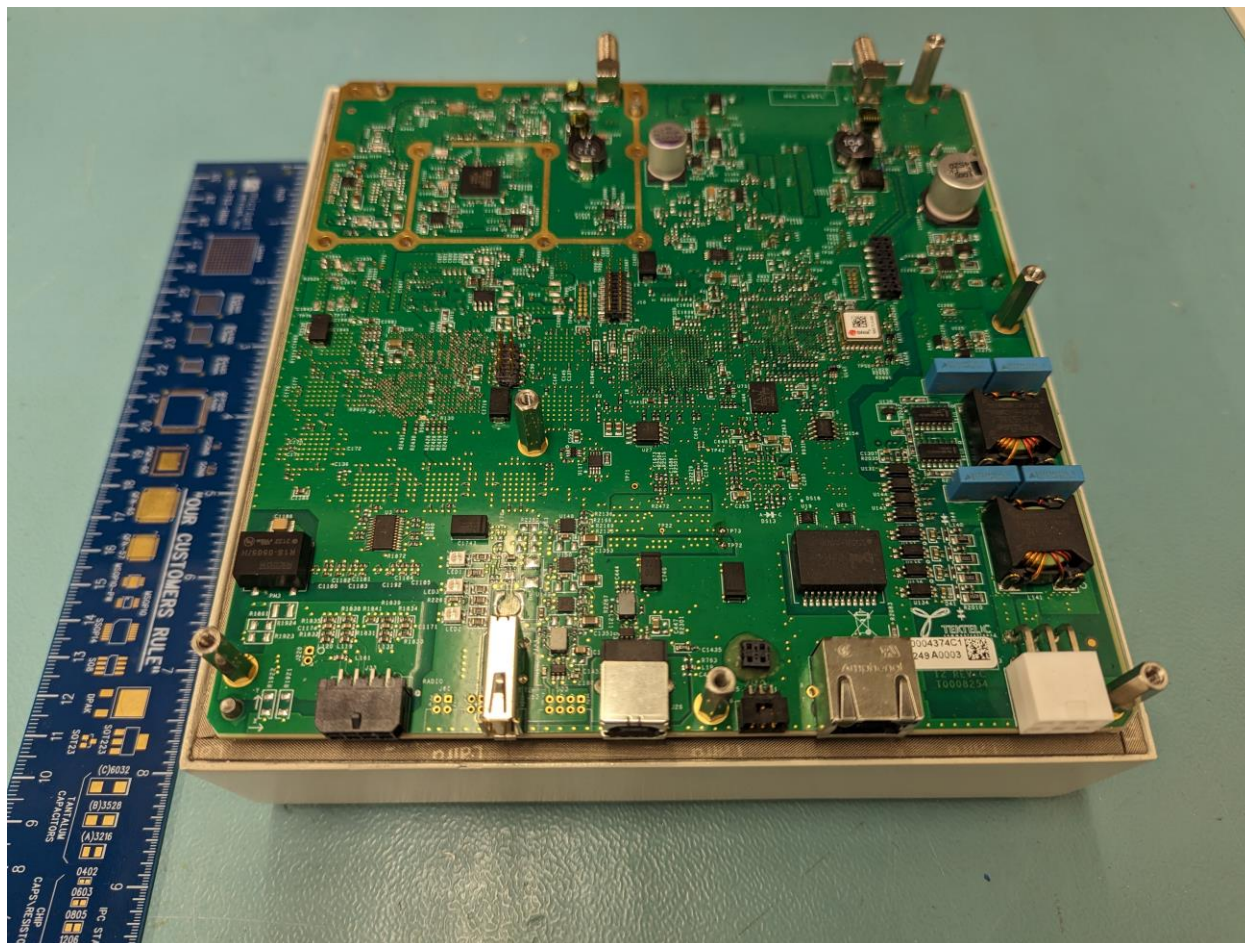
C2PC

PCBA Comparison

Enclosure View with Shield



Enclosure View without Shield



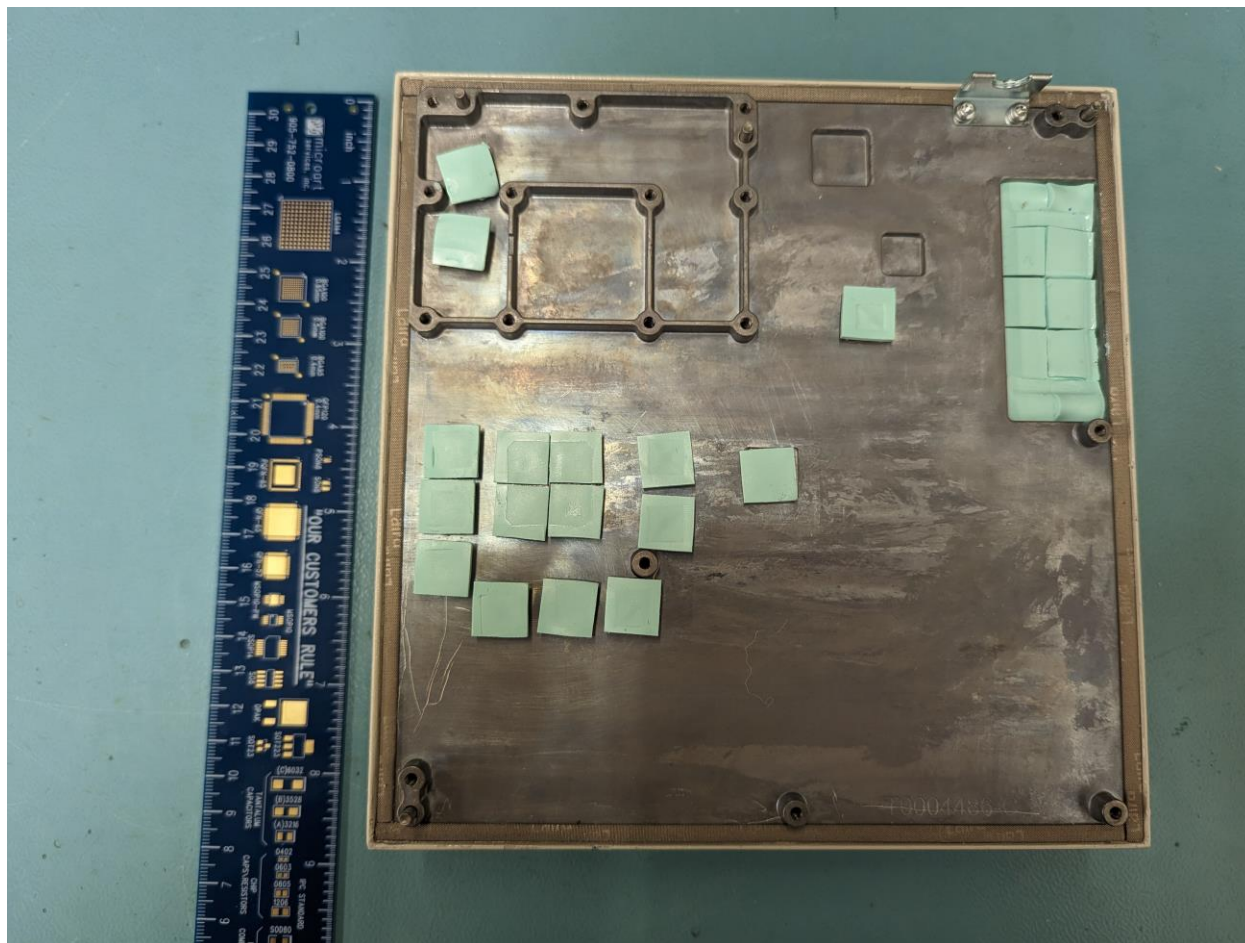
FCC ID: 2ALEPT0004438

IC: 22504-T0004438

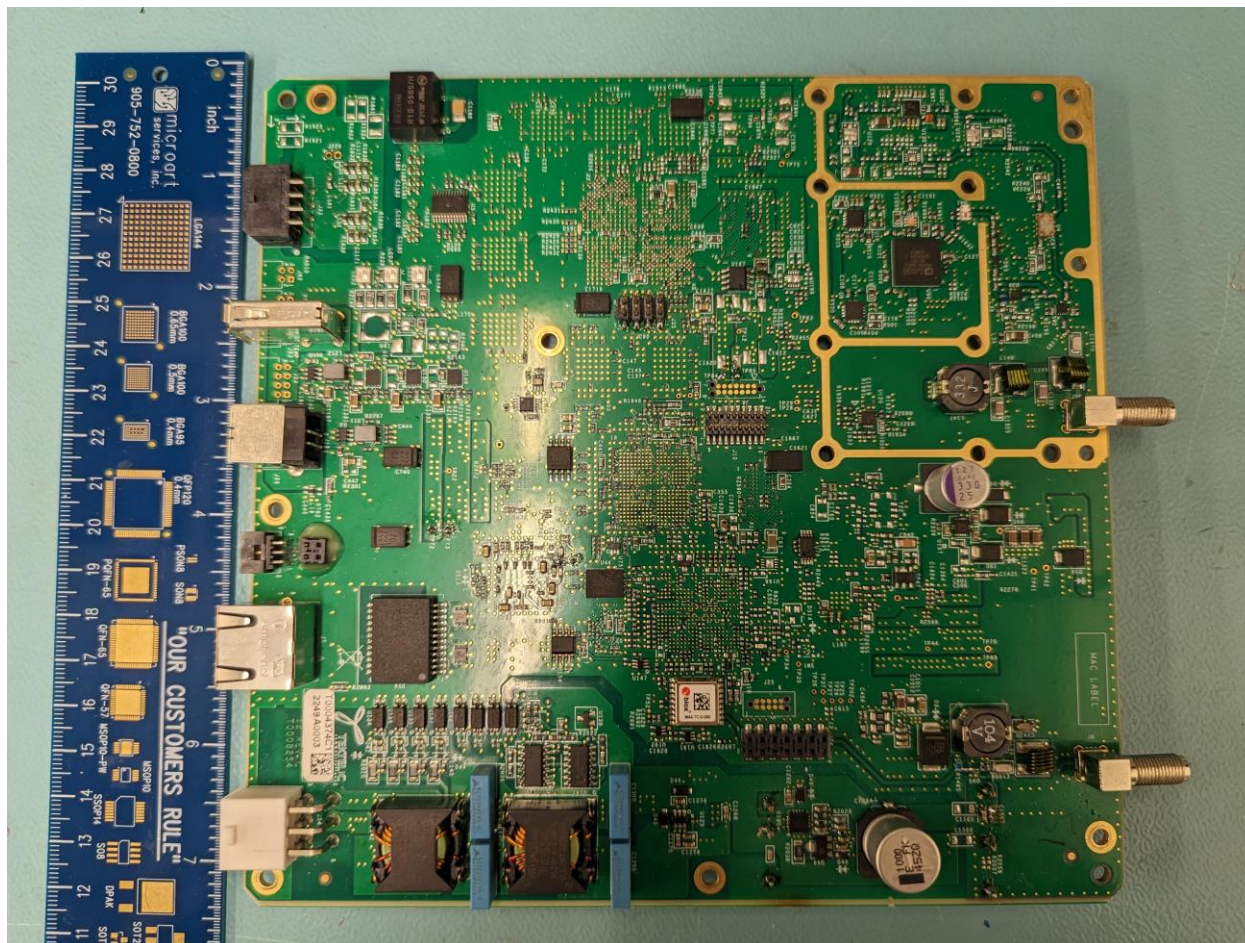
C2PC

PCBA Comparison

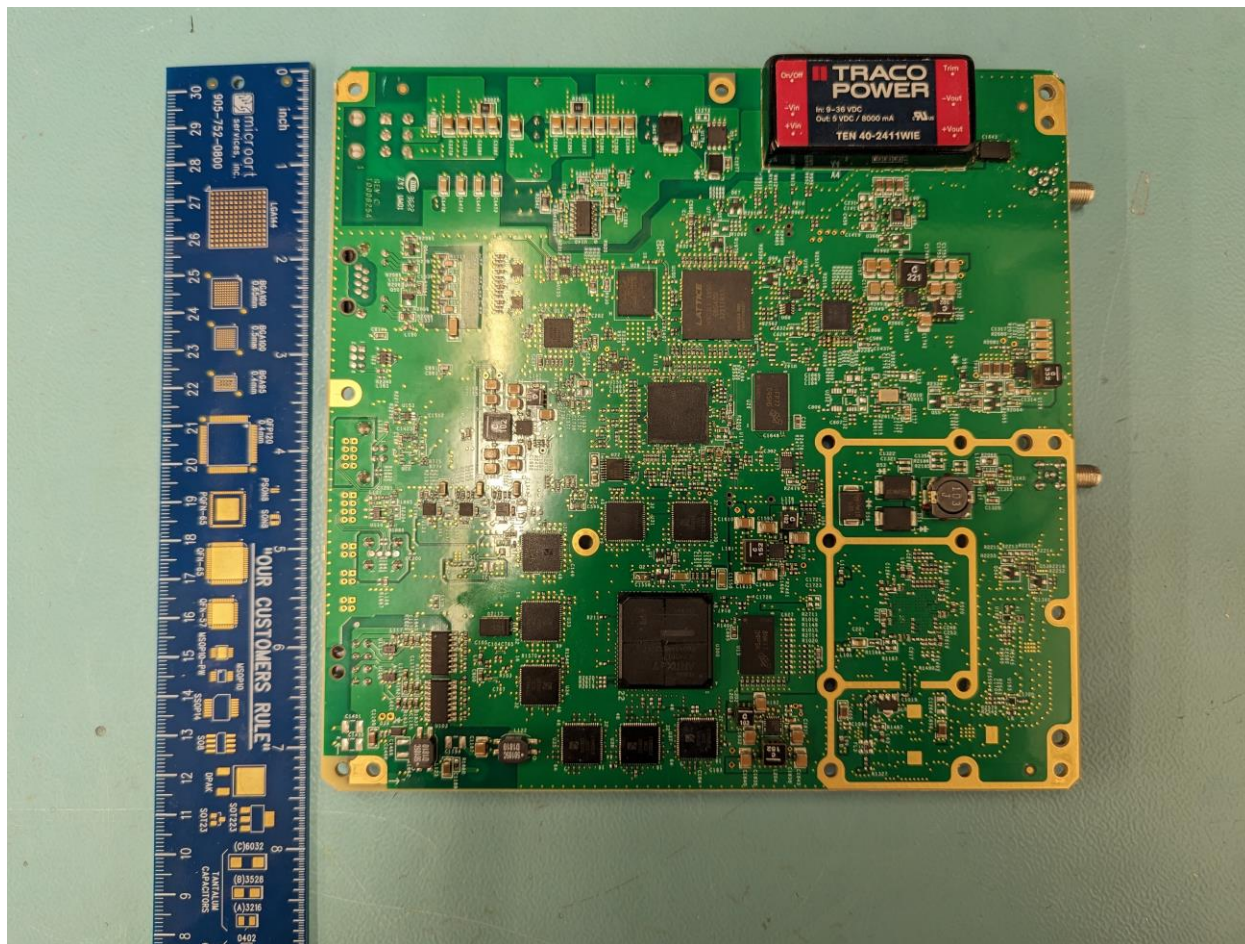
Enclosure inside View without PCB



PCB Top View



PCB Bottom View



Change List:

1. Clock generator – same functionality – same LVDS levels
2. Crystal oscillator replaced with MEMS-based oscillator
3. GPIO FPGA and FE-FPGA
4. Buck power converters – changed from TI to Maxim
5. RF LNA replaced with Qorvo from NXP.
6. VSWR detector changed to TI from MAX
7. SPDT switch changed from Skyworks to Qorvo.
8. Input power supplies are replaced with pin-to-pin compatible parts.

Legend – Similarities and Differences:

Different Part

Fixed Gateway Primary Side

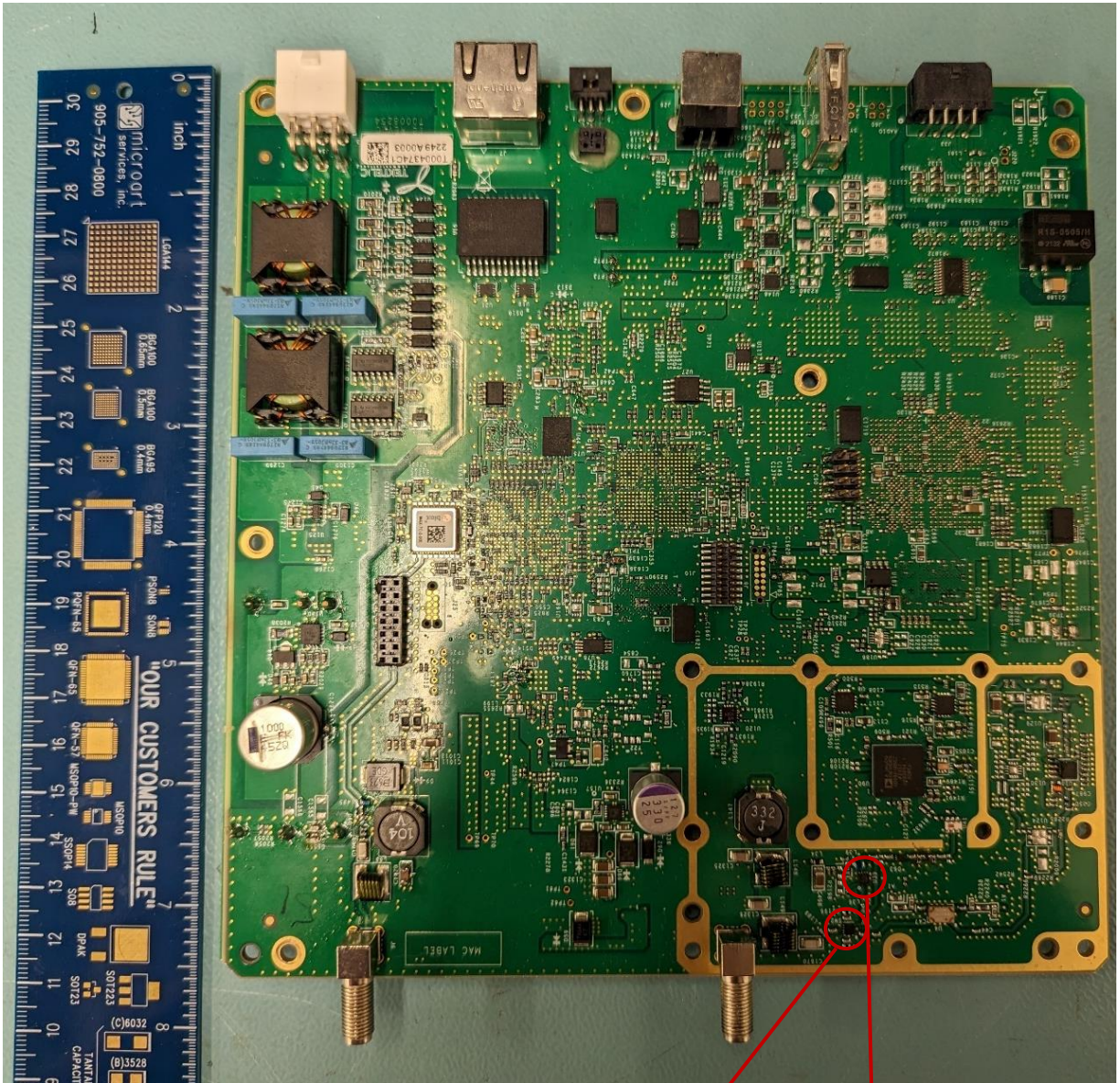


Figure 1 Gen 2 Fixed gateway primary side

RF SPDT switch
RFSW8000

LNA
Qorvo TQP3M9036

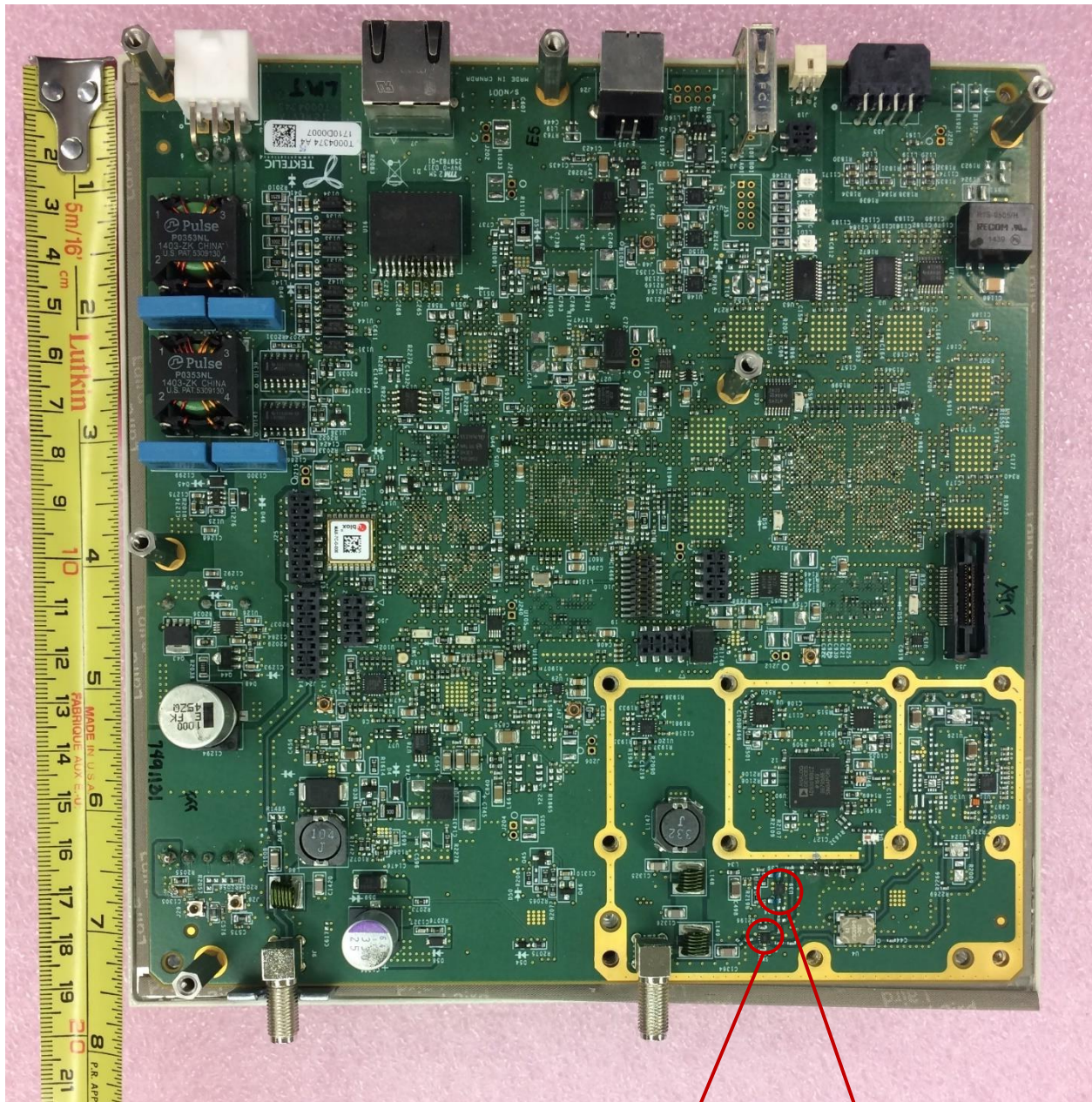
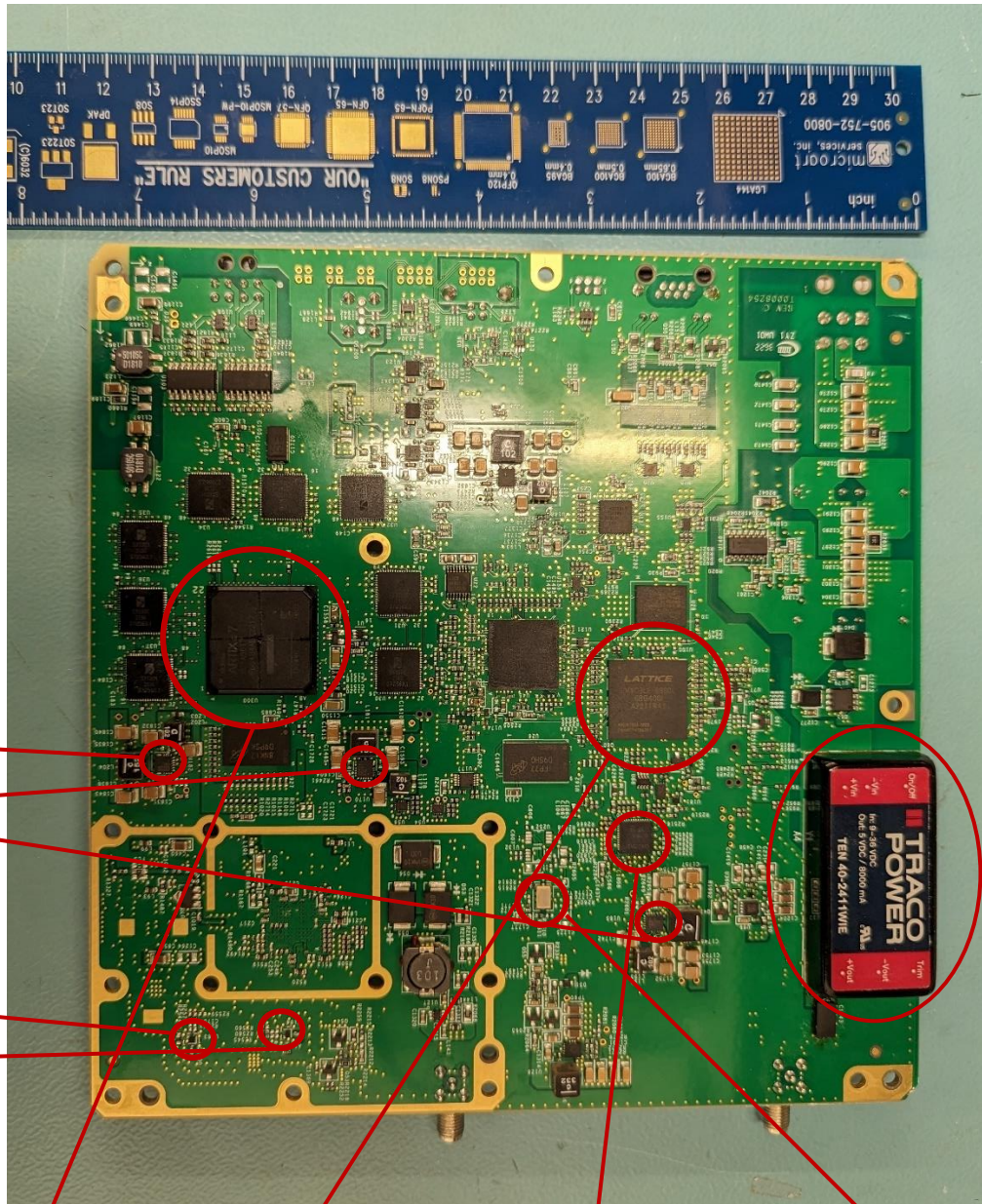


Figure 2 Gen 1 Fixed gateway primary side

RF SPDT switch
SKY13321

LNA
Avago MGA-633P8

Fixed Gateway Secondary Side



Buck power
convertor
MAX20408AFOC

Detector for
VSWR
LMH2100

Power
supply
Traco TEN
40-2411

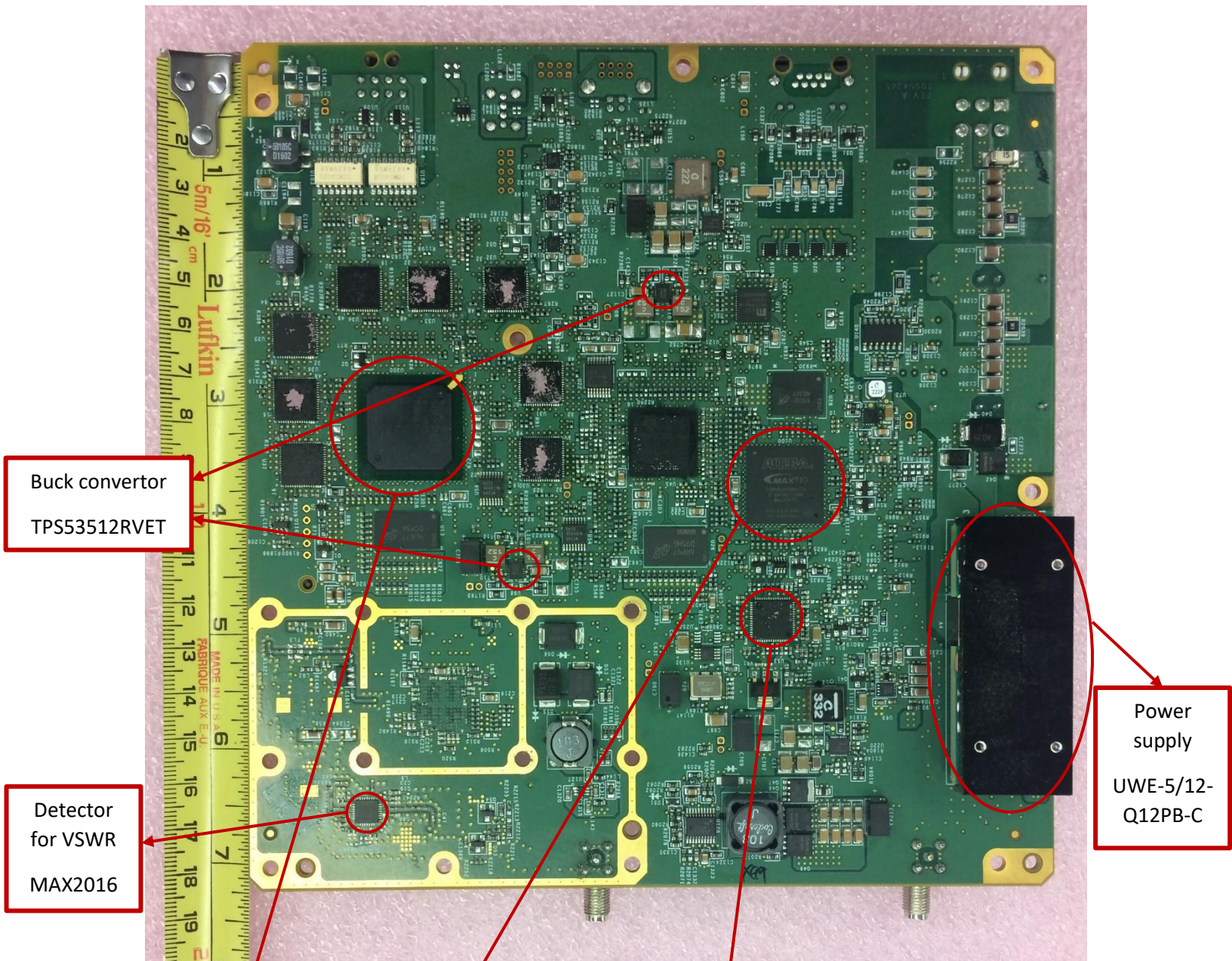
Figure 3 Gen 2 fixed gateway secondary side

FE FPGA
Artix-7

GPIO FPGA
Lattice MachXO3LF

Clock generator
TI CDCM6208

Crystal oscillator
SiT5156AI



Buck convertor
TPS53512RVET

Detector
for VSWR
MAX2016

Power
supply
UWE-5/12-
Q12PB-C

FE FPGA
Spartan 6

GPIO FPGA
Max10

Clock generator
SI5341A

Figure 4 Gen 1 fixed gateway secondary side