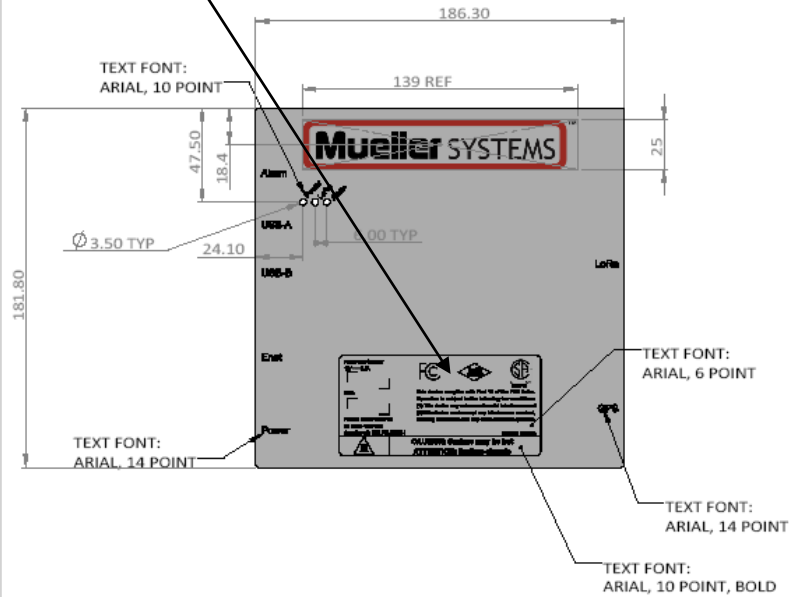


Label Location (dimension in mm)

This document contains proprietary information and may not be copied or reproduced without the express written permission of a duly authorized representative of TEKTELIC Communications Inc. Copyright © 2017 TEKTELIC Communications Inc. All Rights Reserved

REVISIONS		
REV.	DESCRIPTION	DATE
A		05-Feb-2017

- LOGO:
 1. SEE DOC. T0004551-MUELLER LOGO.eps FOR THE LOGO DETAILS.
 2. USE FIXED ASPECT RATIO TO SCALE THE LOGO TO SPECIFIED SIZE.
 3. PRINT THE LOGO IN 25MM HEIGHT AT LOCATION SPECIFIED.



NOTES:

- DRAWING DIMENSIONS ARE FOR REFERENCE AND INSPECTION ONLY. THE ASSOCIATED 3D CAD FILE IS THE PRIMARY DIMENSION REFERENCE.
- ALL DIMENSIONS IN MM (INCHES)
- UNLESS OTHERWISE SPECIFIED TOLERANCES ARE:
 DIMENSIONS: X ±0.5
 X.X ±0.25
 X.XX ±0.1
 X.XXX ±0.05
 HOLE DIAMETER: ±0.25
 ANGLES: ±0.5°
 FLATNESS: ±0.1 OVER 100MM
- MATERIAL: CLEAR POLYCARBONATE FILM, 0.25MM(0.010") THICK. ALL ARTWORK IS TO BE REVERSE SCREEN PRINTED AT A MINIMUM OF 1200 DPI
 TEXT AND LAYOUT AS SHOWN
 TEXT FONT: ARIAL, SIZE AS SHOWN
 TEXT AND SYMBOL COLOR: PANTONE BLACK
 LOGO: PANTONE BLACK WITH A RED BORDER-??PMS 186
 BACKGROUND COLOR: RAL 9002 (GREY-WHITE)
- BACK SIDE: PRESSURE SENSITIVE ADHESIVE, 3M 300LSE ACRYLIC ADHESIVE, 2.0 MIL THICK ON A 4.0 MIL 60 LB DENSIFIED KRAFT PAPER LINER. EQUIVALENT ALTERNATIVE MUST BE APPROVED BY TEKTELIC
- ALL MATERIALS, FINISHES AND MANUFACTURING PROCESSES SHALL BE COMPLIANT WITH EU DIRECTIVE 2011/65/EU (RoHS 2)
 THIS PRODUCT SHALL BE BUILT TO THE REQUIREMENTS LISTED IN TEKTELIC PRODUCT WORKMANSHIP STANDARD A0001043
-

PSA AT BACK SIDE ONLY



TITLE: LABEL, PEARL FIXED GW		
DWG NO. T0004551	REVISION A	SIZE A3
SCALE:1:2		SHEET 1 OF 2

FCC ID: 2ALEPT0004438
IC ID: 22504-T0004438

Label & Location

Label details (measurement in inches)

