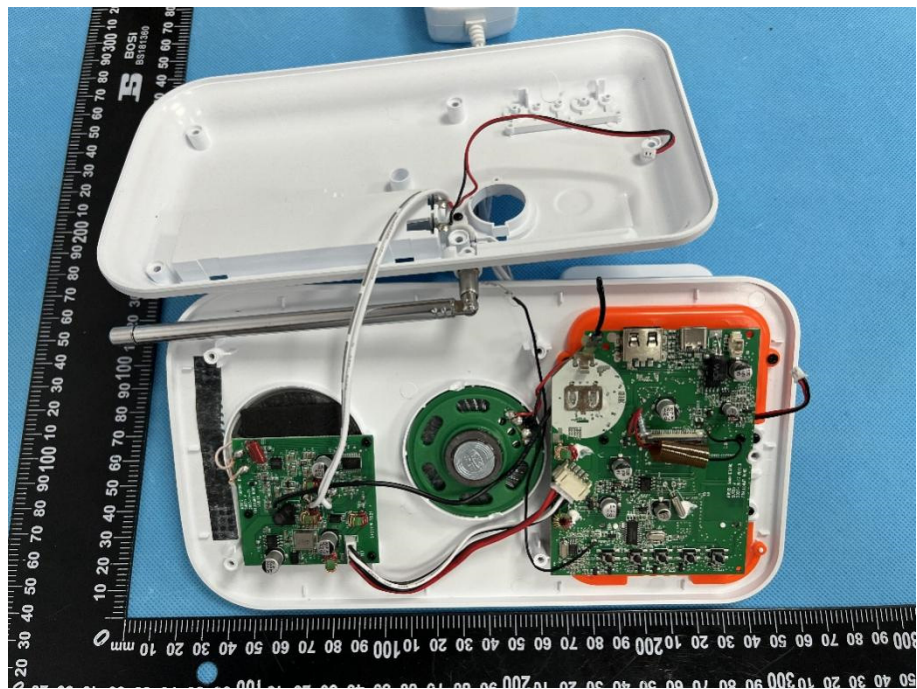


EXHIBIT 3 - EUT INTERNAL PHOTOGRAPHS

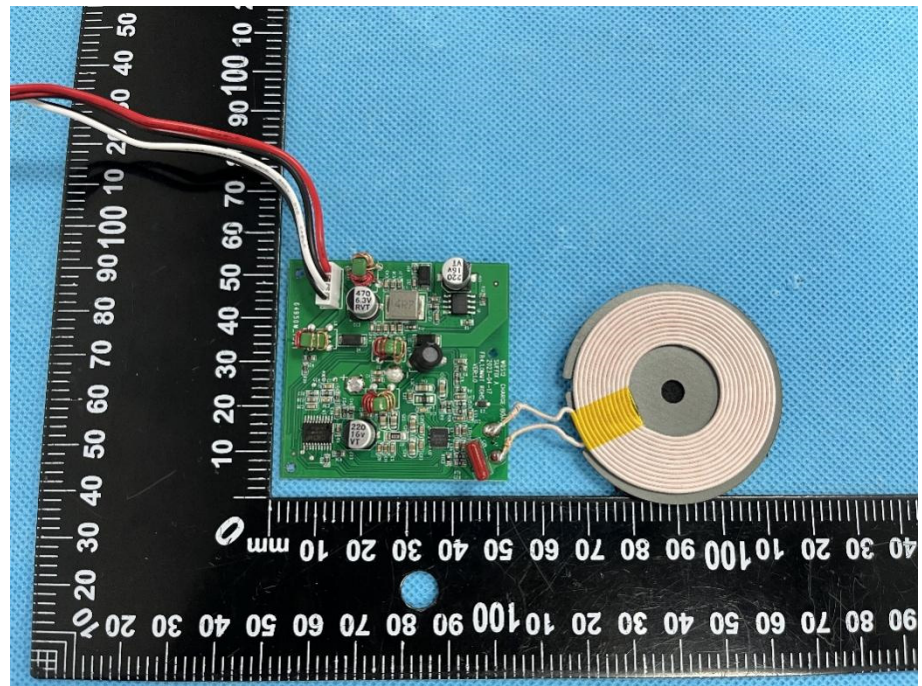
EUT Housing and Board View 1



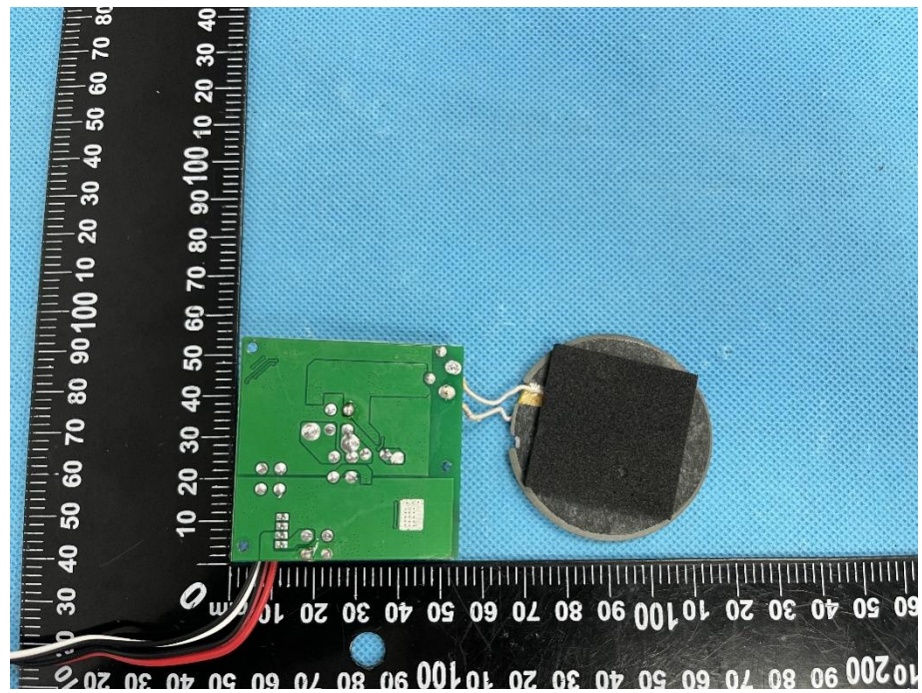
EUT Housing and Board View 2

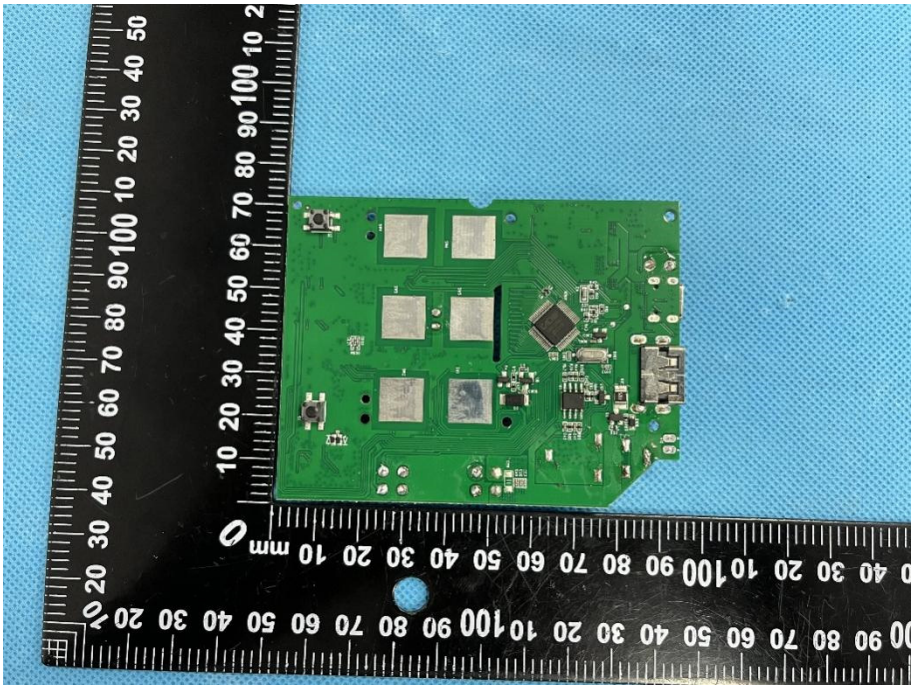
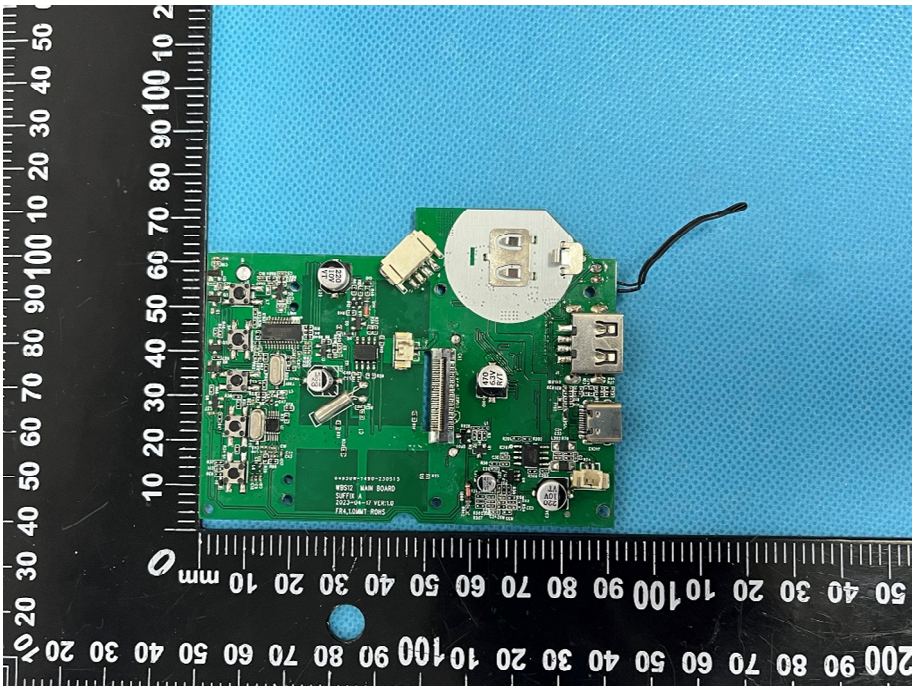


**Solder
Board-Component
View 1**



**Solder
Board-Component
View 2**



| | |
|-----------------------------------------------------|-------------------------------------------------------------------------------------------------------------------------------------------------------------------------------------------------------------------------------------------------------------------------------------------------------------------------------------------------------------------------------------------------------------------------------------------------------------------------------------------------------------------------------|
| <p>Solder Board-Component View 3</p> |  <p>A photograph of a green PCB component, labeled 'View 3'. The component is rectangular with several square components and a central chip. It is placed on a blue textured surface next to a black ruler with white markings. The ruler shows measurements in millimeters, with the component's length being approximately 100 mm and its width approximately 40 mm.</p> |
| <p>Solder Board-Component View 4</p> |  <p>A photograph of the same green PCB component, labeled 'View 4'. This view shows the underside of the component, revealing various components like capacitors, resistors, and a large circular component. It is placed on a blue textured surface next to a black ruler with white markings. The ruler shows measurements in millimeters, with the component's length being approximately 100 mm and its width approximately 40 mm.</p> |

Antenna View

