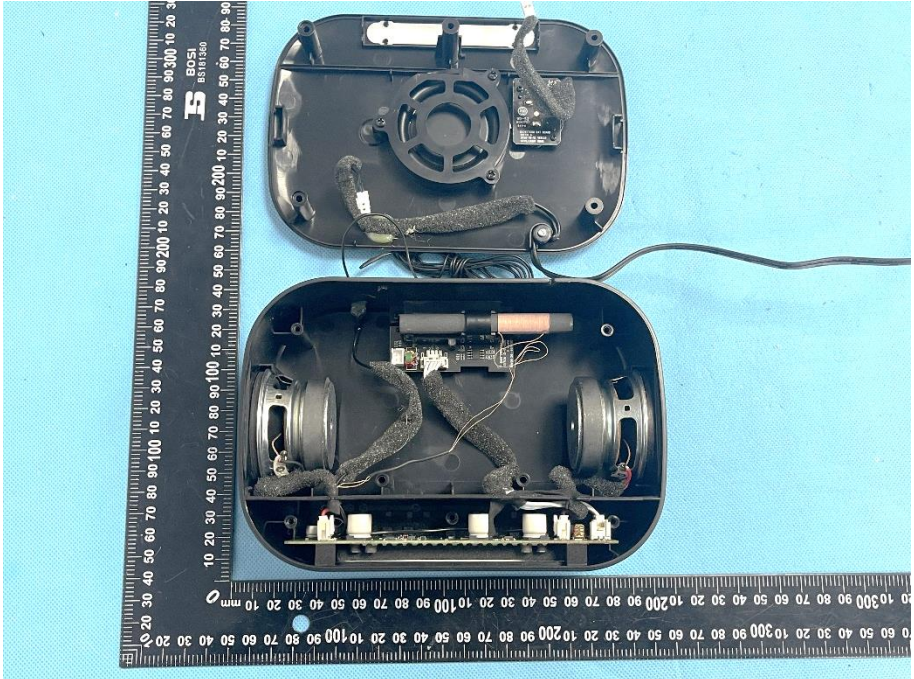
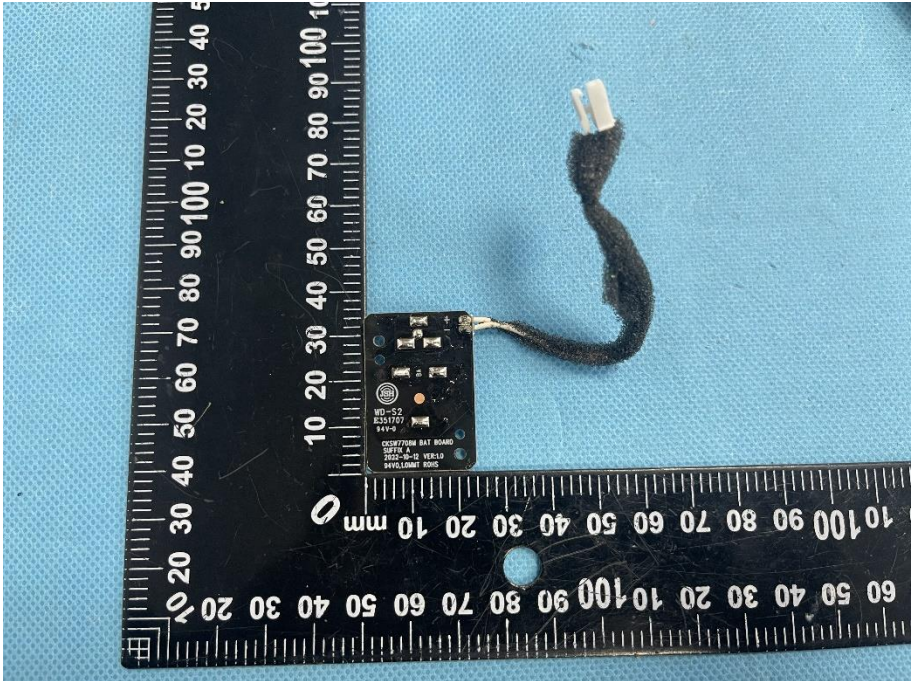
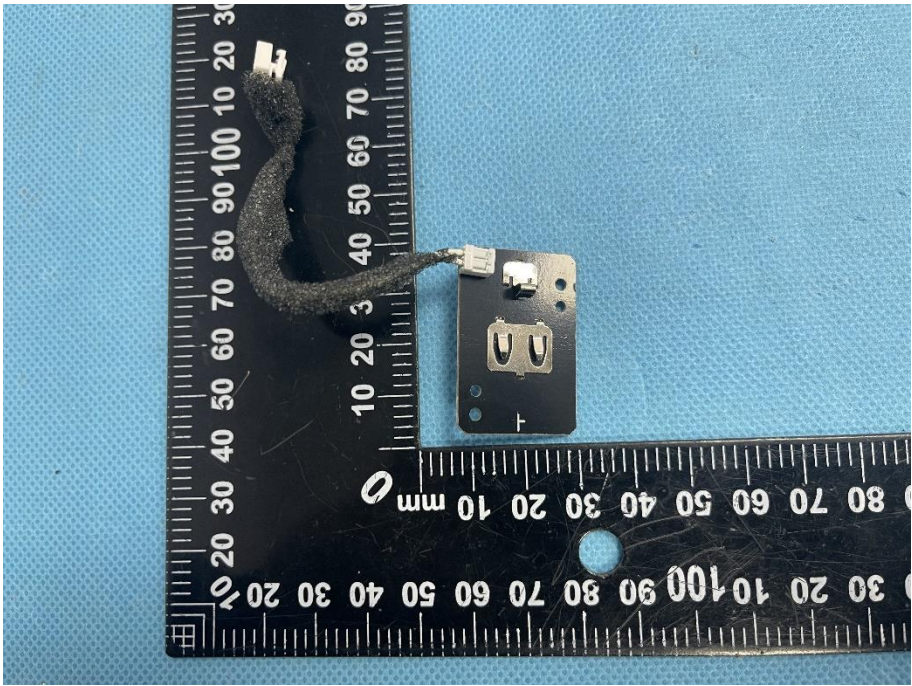
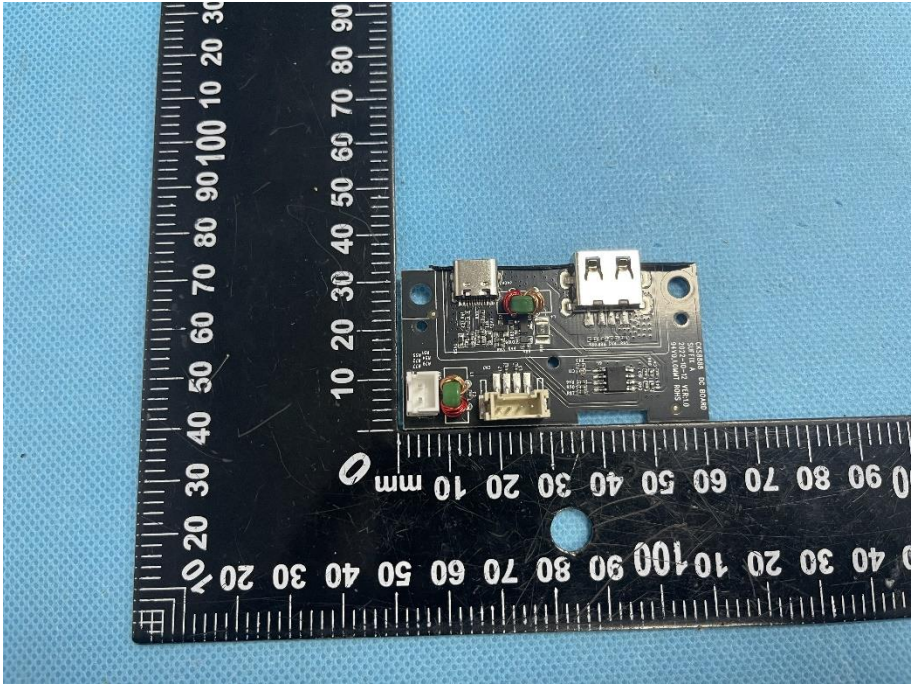
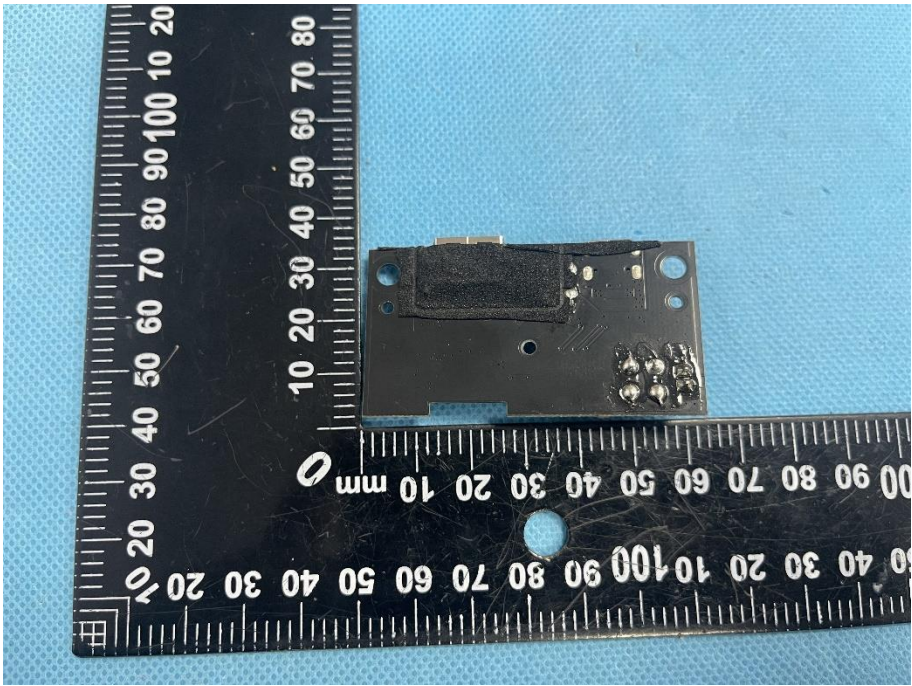
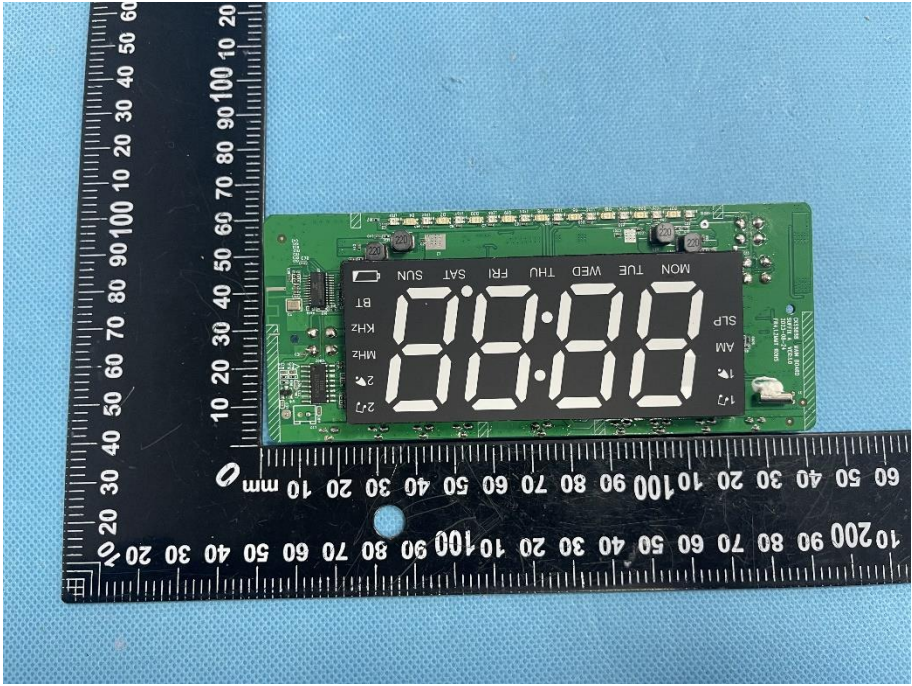


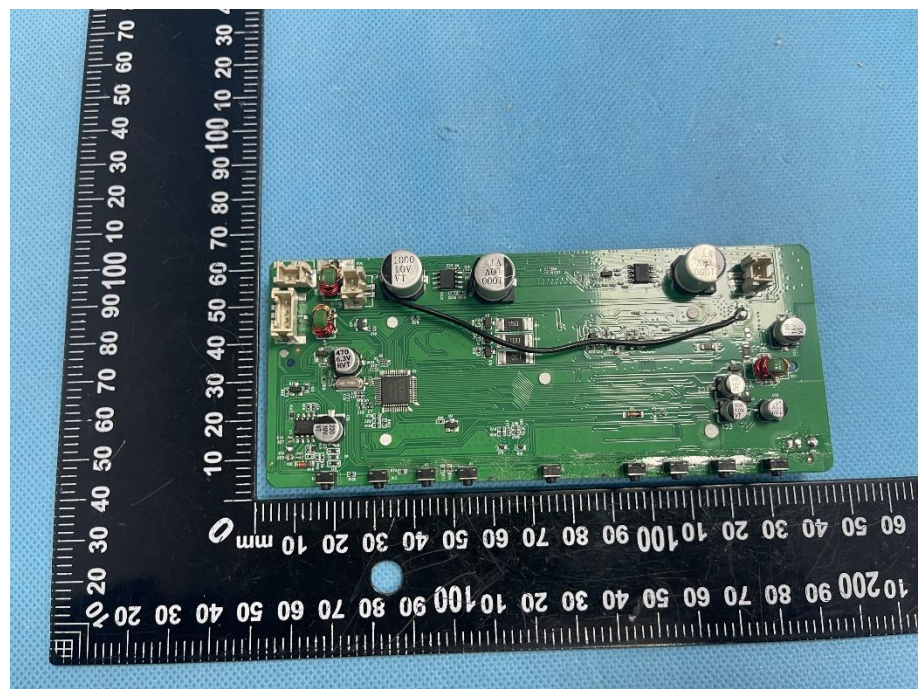
### EXHIBIT 3 - EUT INTERNAL PHOTOGRAPHS

<p><b>EUT Housing and Board View 1</b></p>	
<p><b>Solder Board-Component View 1</b></p>	

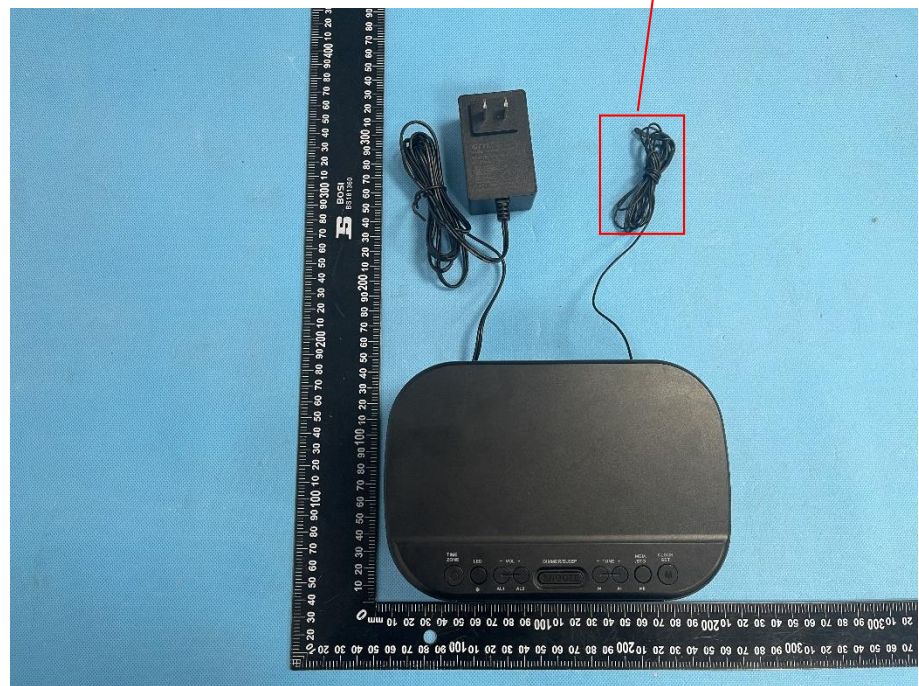
<p><b>Solder Board-Component View 2</b></p>	 <p>A photograph showing the back of a small black PCB component. A thick, dark, braided shielded cable is soldered to a connector on the board. The component is placed on a blue textured surface next to a black ruler with white markings for scale. The ruler shows centimeter and millimeter increments.</p>
<p><b>Solder Board-Component View 3</b></p>	 <p>A photograph showing the front of the same small black PCB component. It features a white multi-pin connector, a green component, and various surface-mount components. The component is placed on a blue textured surface next to a black ruler with white markings for scale. The ruler shows centimeter and millimeter increments.</p>

<p><b>Solder Board-Component View 4</b></p>	 <p>A photograph of a small, rectangular black solder board component. The component has several small components and solder joints on its surface. It is placed on a blue textured background next to a black ruler with white markings. The ruler shows measurements in millimeters, with the component's length being approximately 40 mm and its width approximately 15 mm.</p>
<p><b>Solder Board-Component View 5</b></p>	 <p>A photograph of a green printed circuit board (PCB) component with a digital display. The display shows "00:00" and "00:00" in white digits. Above the display, there are labels for days of the week: "MON TUE WED THU FRI SAT SUN". To the left of the display, there are labels for "SLP", "AM", "KHZ", "MHZ", and "2.7". The component is placed on a blue textured background next to a black ruler with white markings. The ruler shows measurements in millimeters, with the component's length being approximately 100 mm and its width approximately 25 mm.</p>

**Solder  
Board-Component  
View 6**



**Antenna View 1**



Antenna View 2

