

# 天线规格书

## Antenna specification

客户名称 Customer name 深圳市壹秘智能技术有限公司  
SHENZHEN EMEET TECHNOLOGY CO., LTD.

---

产品机型 Product Model G1-PRO

---

客户料号 Risuntek P/N: 401190000018

---

版本 Version: A0

---

零件名称 Prodcut Name: WIFI天线组件 Antenna assembly

---

产品描述 Description: WIFI天线+一代端子同轴线 Antenna + one generation terminal coaxial line

---

日期 Date: 2023/7/18

---

地址：深圳市龙岗区五和大道4006号酷石科创中心2楼211-212室

Address: Room 211-212, 2nd Floor, Coolstone Science and Technology Innovation Center, 4006 Wuhe Avenue, Longgang District, Shenzhen

Telephone: 0755-28700082

E-mail: cindy.zhang@honant.cn

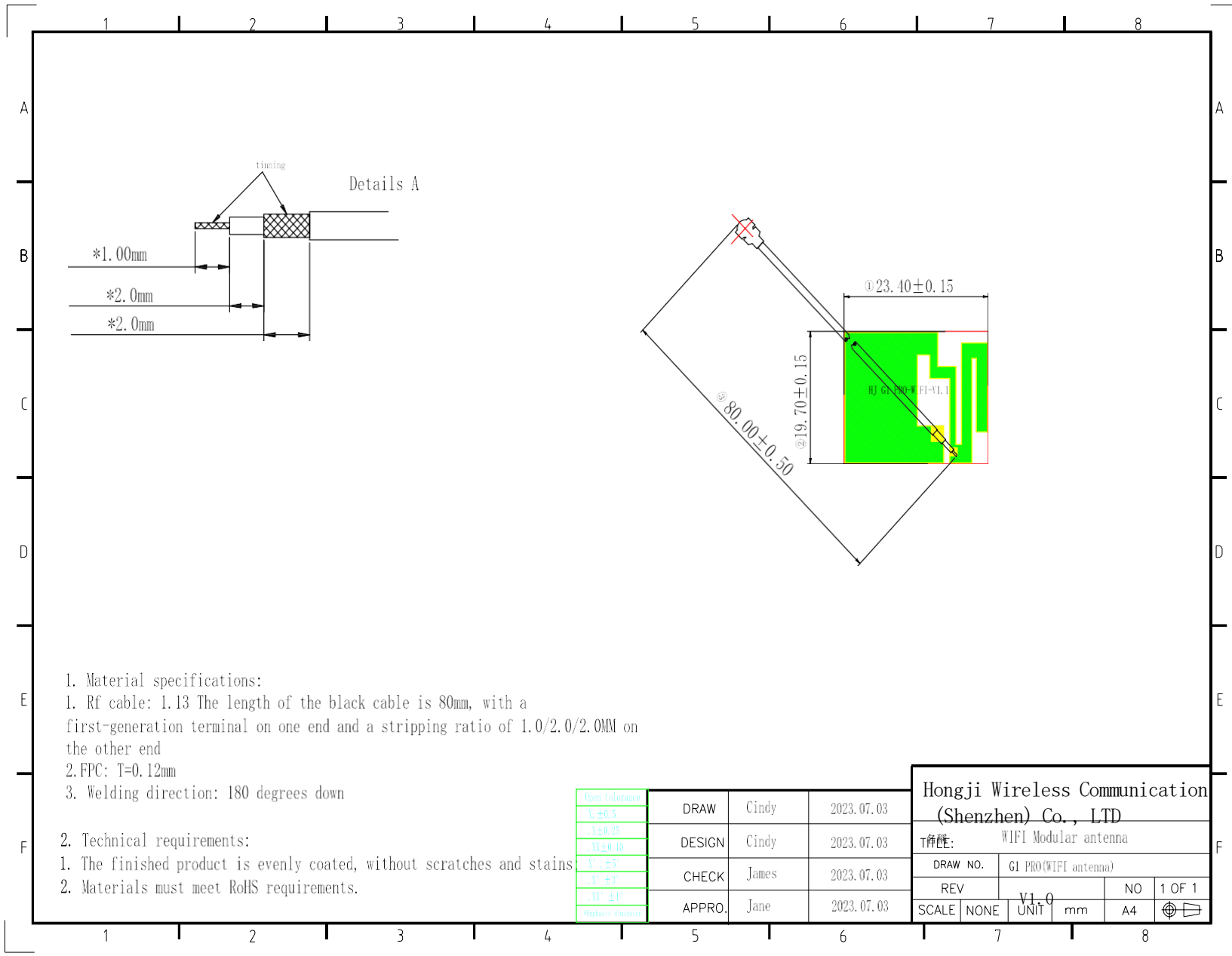
# 目 录 LIST

- 一、 履历表 Curruculum vitae
- 二、 产品图纸 Product drawings
- 三、 电气、机械性能说明  
Description of electrical and  
mechanical properties

一、制/修订变更履历表  
Prepare/revise and change resume

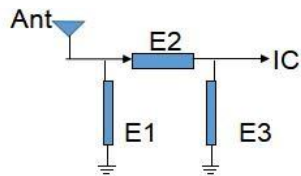
版本 version	修订页面 Revision page	变更时间 change time	变更人 Change of person	变更原因及内容 and content of change Reason	备注 Descr
A0	—	2023/5/30	Cindy	初版天线形式 First version of the antenna form	
A1					
A2					
A3					
A4					
A5					
A6					

## 二、产品图纸 Product drawing



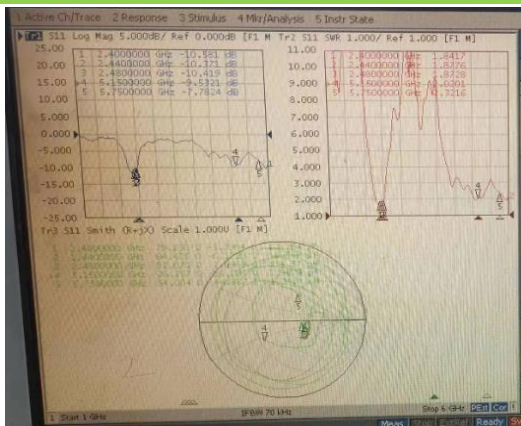
### 三、电气、机械性能说明 Description of electrical and mechanical properties

#### 1、匹配电路图 Matching circuit diagram



Element	Value
E1	N/A
E2	0Ω
E3	N/A

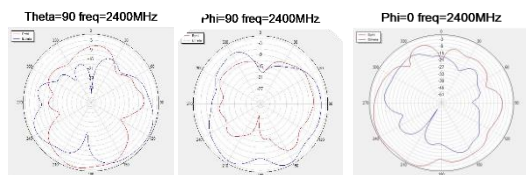
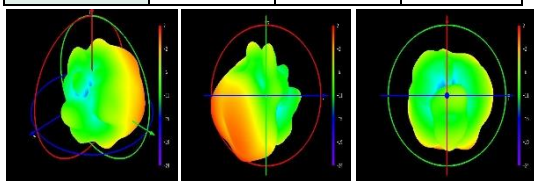
#### 2、S11



### 3、无源效率 Passive efficiency

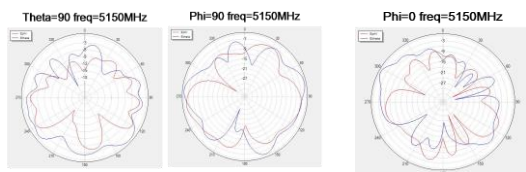
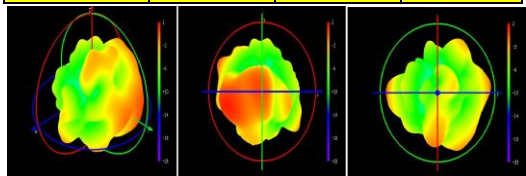
#### WIFI-2.4G

Freq[MHz]	Gain(dBi)	Efficiency(db)	Efficiency(%)
2400	1.88	-3	50.12
2410	1.92	-3.06	49.45
2420	2.02	-3.12	48.70
2430	2.04	-3.21	47.78
2440	2	-3.29	46.83
2450	1.91	-3.34	46.39
2460	1.83	-3.29	46.88
2470	1.76	-3.23	47.57
2480	1.8	-3.18	48.12
2490	1.89	-3.15	48.44
2500	1.96	-3.18	48.04



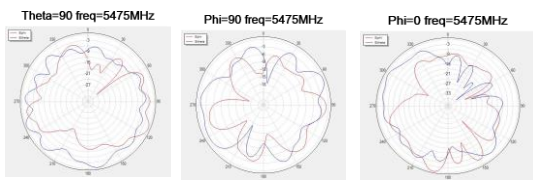
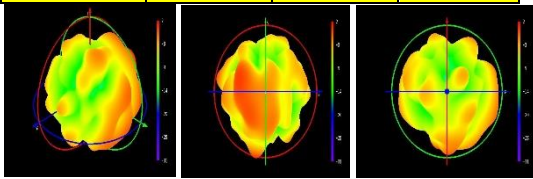
#### WIFI-5G (5150-5350MHz)

Freq[MHz]	Gain(dBi)	Efficiency(db)	Efficiency(%)
5150	1.57	-2.85	51.88
5170	1.45	-2.71	53.52
5190	1.59	-2.71	53.52
5210	1.62	-2.7	53.64
5230	1.64	-2.71	53.53
5250	1.60	-2.76	53.01
5270	1.50	-2.82	52.26
5290	1.42	-2.88	51.58
5310	1.33	-2.96	50.54
5330	1.34	-3.09	49.12
5350	1.27	-3.24	47.43
AVG	1.52	-2.79	52.61



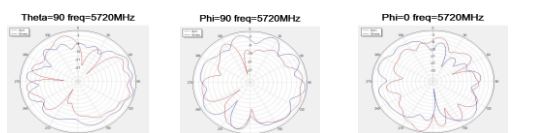
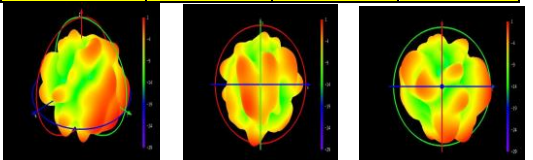
WIFI-5G (5475-5725MHz)

Freq[MHz]	Gain(dBi)	Efficiency(db)	Efficiency(%)
5475	1.19	-3.66	43.09
5500	0.76	-3.58	43.81
5525	0.95	-3.52	44.44
5550	1.06	-3.47	45.02
5575	1.40	-3.21	47.73
5600	1.35	-3.22	47.62
5625	1.31	-3.32	46.55
5650	1.08	-3.36	46.17
5675	0.82	-3.36	46.12
5700	0.52	-3.64	43.23
5725	0.45	-3.4	45.72
AVG	1.10	-3.41	45.62



WIFI-5G (5725-5850MHz)

Freq[MHz]	Gain(dBi)	Efficiency(db)	Efficiency(%)
5720.00	0.13	-3.81	41.64
5730.00	0.16	-3.71	42.58
5740.00	0.37	-3.71	42.57
5750.00	0.59	-3.68	42.90
5760.00	0.85	-3.63	43.31
5770.00	1.15	-3.57	43.94
5780.00	1.42	-3.5	44.67
5790.00	1.63	-3.38	45.97
5800.00	1.8	-3.23	47.48
5810.00	1.91	-3.15	48.45
5820.00	1.98	-3.08	49.21
5830.00	1.98	-2.98	50.34
5840.00	1.94	-2.96	50.61
5850.00	1.76	-2.85	51.85
AVG	1.26	-3.37	46.11



4、有源数据 Active data

Frequency Band	Channel	TRP (dBm)	TIS (dBm)
B	CH 1	15.98	-81.35
	CH 6	15.56	-82.07
	CH 13	16.07	-82.47
	Channel	TRP (dBm)	TIS (dBm)
G	CH 1	13.56	-69.34
	CH 6	14.77	-80.59
	CH 13	14.82	-68.77
	Channel	TRP (dBm)	TIS (dBm)
N	CH 1	12.64	-67.66
	CH 6	12.73	-68.05
	CH 13	12.68	-68.81
	Channel	TRP (dBm)	TIS (dBm)
A	CH 36	12.58	-74.26
	CH 165	13.46	-75.61
	Channel	TRP (dBm)	TIS (dBm)
AC	CH 36	12.42	-69.36
	CH 48	12.68	-69.77
	CH 64	12.53	-70.13
	CH 149	12.49	-69.58
	CH 157	12.88	-70.44
	CH 163	12.75	-70.51

5、天线装配位置 Antenna assembly position

