

FCC ID:2ALCN-A300

V1.0

IC:23496-EMTA300

Model No:eMeet Adapter A300

PMN:A300

## USB Dongle

QUICK START GUIDE

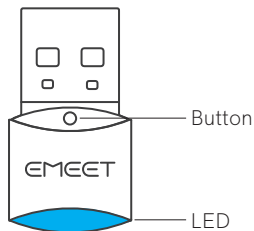
### Contact US

 [www.emmeet.ai](http://www.emmeet.ai)       [support@emmeet.ai](mailto:support@emmeet.ai)

US: + 1 8889595320      (EST 9:00am-5:00pm)

 JP: + 81 8008051955      (JST 10:00am-6:00pm)

CN: + 400 8338 051      (BJT 9:00am-5:30pm)



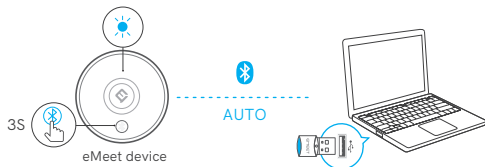
### eMeet Adapter A300

SHENZHEN EMEET TECHNOLOGY CO.,LTD.

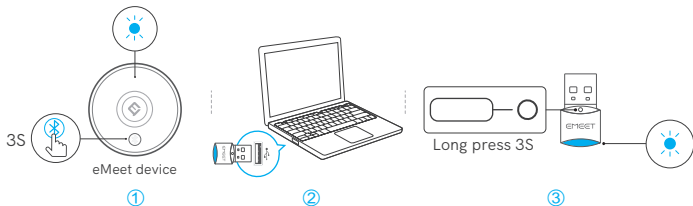
 QSG Download  
[www.emmeet.ai/support](http://www.emmeet.ai/support)

## 1. Pairing

### •Auto Pairing



### •Manual Pairing

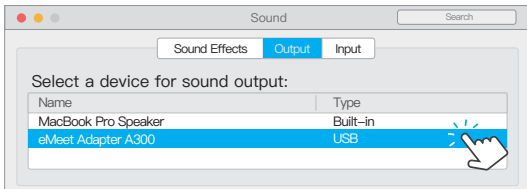


### •LED behaviour-USB Dongle

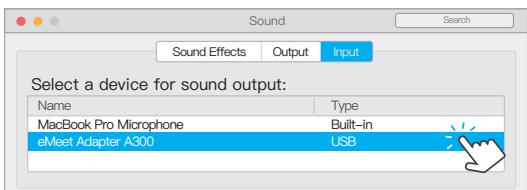
Pairing		Blinking blue LED	...	Connected		Solid blue LED
---------	---	-------------------	-----	-----------	---	----------------

## 2.PC Setting

### •Mac OS Setting

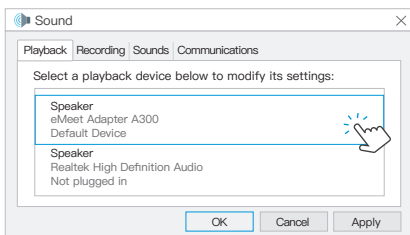


Output Setting

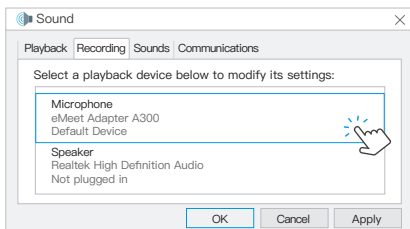


Input Setting

### • Windows Setting



Speaker Setting



Microphone Setting

The device has been evaluated to meet general RF exposure requirement, The device can be used in portable exposure condition without restriction.

This device complies with part 15 of the FCC rules. Operation is subject to the following two conditions:

- (1) this device may not cause harmful interference, and
- (2) this device must accept any interference received, including interference that may cause undesired operation.

NOTE: The manufacturer is not responsible for any radio or TV interference caused by unauthorized modifications or changes to this equipment. Such modifications or changes could void the user's authority to operate the equipment.

NOTE: This equipment has been tested and found to comply with the limits for a Class B digital device, pursuant to part 15 of the FCC Rules. These limits are designed to provide reasonable protection against harmful interference in a residential installation. This equipment generates uses and can radiate radio frequency energy and, if not installed and used in accordance with the instructions, may cause harmful interference to radio communications. However, there is no guarantee that interference will not occur in a particular installation. If this equipment does cause harmful interference to radio or television reception, which can be determined by turning the equipment off and on, the user is encouraged to try to correct the interference by one or more of the following measures:

- Reorient or relocate the receiving antenna.
- Increase the separation between the equipment and receiver.
- Connect the equipment into an outlet on a circuit different from that to which the receiver is connected.
- Consult the dealer or an experienced radio/TV technician for help.

Cet appareil est conforme avec Industrie Canada RSS exemptes de licence standard(s).

Son fonctionnement est soumis aux deux conditions suivantes:

- (1) cet appareil ne peut pas provoquer d'interférences, et
- (2) cet appareil doit accepter toute interférence, y compris celles pouvant causer un mauvais fonctionnement de l'appareil.

Cet appareil numérique de la classe B est conforme à la norme NMB-003 du Canada.

Le produit est conforme aux limites d'exposition pour les appareils portables RF pour les Etats-Unis et le Canada établies pour un environnement non contrôlé.

Le produit est sûr pour un fonctionnement tel que décrit dans ce manuel. La réduction aux expositions RF peut être augmentée si l'appareil peut être conservé aussi loin que possible du corps de l'utilisateur ou que le dispositif est réglé sur la puissance de sortie la plus faible si une telle fonction est disponible.