

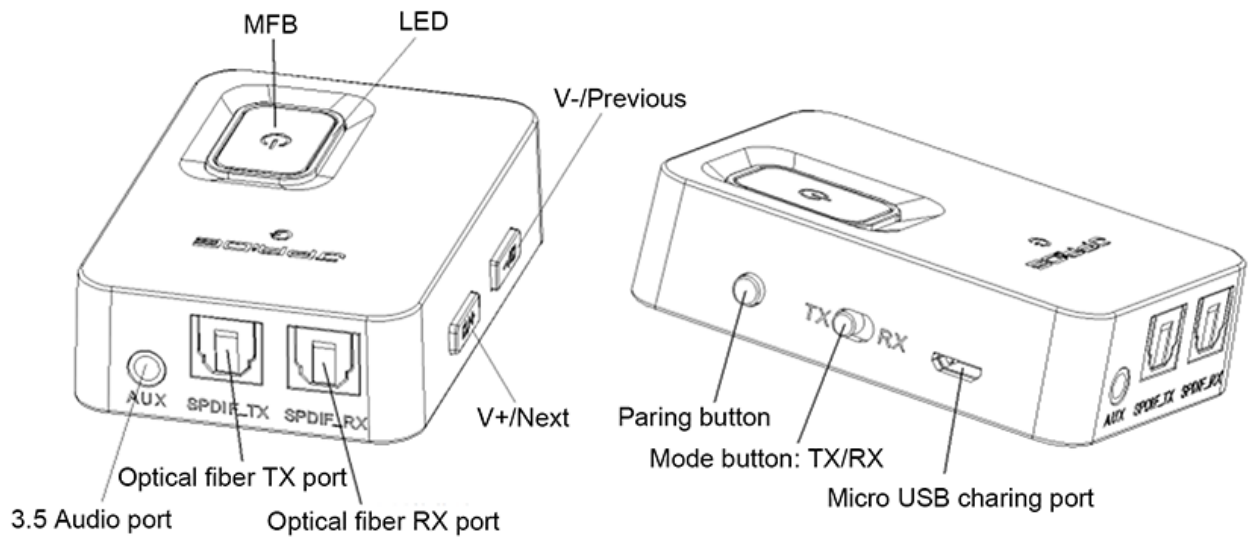
User manual

JPRiDE-JPT2

Contents

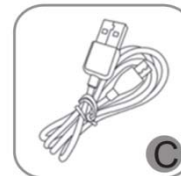
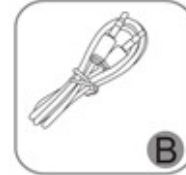
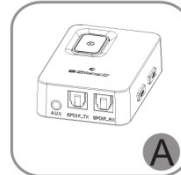
1. Product overview -----	1
2. Essential operation and function-----	2
3. TX transmitter usage -----	3
4. RX receiver usage-----	6
5. Charging-----	9
6. Indicator LED light-----	10
7. Product description-----	11
8. Notes and FAQ -----	12

1. Product overview



Packing list :

- A. JPT2 bluetooth adapter 1
- B. 3.5mm audio cable 1
- C. Micro USB charging cable 1
- D. Manual 1
- E. SPDIF cable 1



2. Essential operations and functions

button	function	operation
MFB	Power on (TX/RX)	In power off status, press MFB around 2 seconds, blue LED flashes twice, JPT2 is powered on. If JPT2 didn't connect with any device before, it will enter into pairing mode automatically after power on, with Blue and Red LED flashes alternately
	Power off (TX/RX)	In power on state, press MFB around 2 seconds, Red LED flashes twice (if release MFB immediately when Red LED lightens, Red LED may only flash once), JPT2 power off; Please re-power on the unit after power off the unit 3 seconds later since the voltage of the chipset may not disappear totally
	Play/Pause	RX In music playing, short press MFB to play/pause music
Pairing button (TX/RX)		In standby status or connected status, short press "Pairing button" (last for 0.2 second) enter into pairing mode, Blue and Red LED flashes alternately; In connected standby status, press "Pairing button" 3 seconds quit connected status, enter into pairing mode again
Volume up/ next song (RX)		long press "Volume up" button to switch next song, short press "Volume up" button to increase volume
volume down/ previous song		Long press "Volume down" button to switch previous song, Short press "Volume down" button to decrease volume
Mode SPDIF/AUX		Power on default setting SPDIF mode, when insert Φ 3.5mm audio cable, automatic switch to AUX mode; when pull out Φ 3.5mm audio cable switch to SPDIF mode In SPDIF mode, TX status put the optical fiber into SPDIF TX port, RX status put the optical fiber into SPDIF RX port
Status TX/RX		Switch between RX receiver/TX transmitter status Once switch the status, the pairing information for the former mode will be cleared up Please don't switch TX/RX mode within 3 seconds after powered off

3. TX transmitter usage

3.1 In TX status bluetooth pair and connect

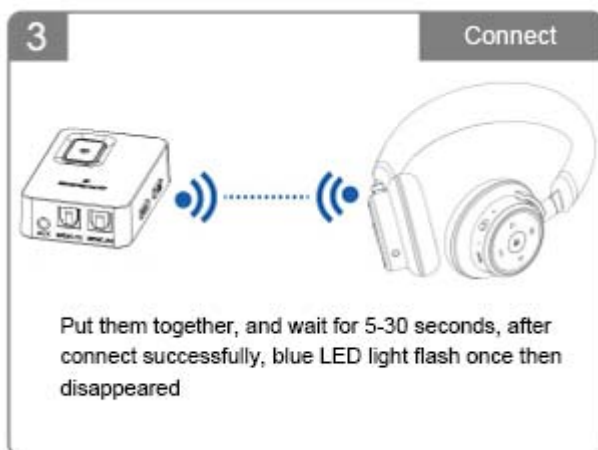
A . Power off status pull TX/RX button to TX side , long press MFB 2 seconds to power on , after blue LED flashes twice, JPT2 power on, when paring list is clear (JPT2 didn't connected with any devices before), power on then enter into pairing mode automatically, Blue and Red LED flashes alternately

B . Power on the unit and standby status, short press "Paring button" (last for 0.2 second) enter into pairing mode, Blue and Red LED flashes alternately

C . Put your devices (bluetooth headset、 speaker or receiver) power on and enter into paring mode , usually LED flash style is blue and red LED flashes alternately or blue LED flashes quickly

D . Put JPT2 with your device together and wait for 5-30 seconds , after connect successfully , blue LED flashes once then disappear

E . When you want to use in AUX mode, just insert the $\Phi 3.5\text{mm}$ audio cable then SPDIF mode automatically switch to AUX mode ; when you want to use in SPDIF mode, pull the $\Phi 3.5\text{mm}$ audio cable out then automatically switch to SPDIF mode

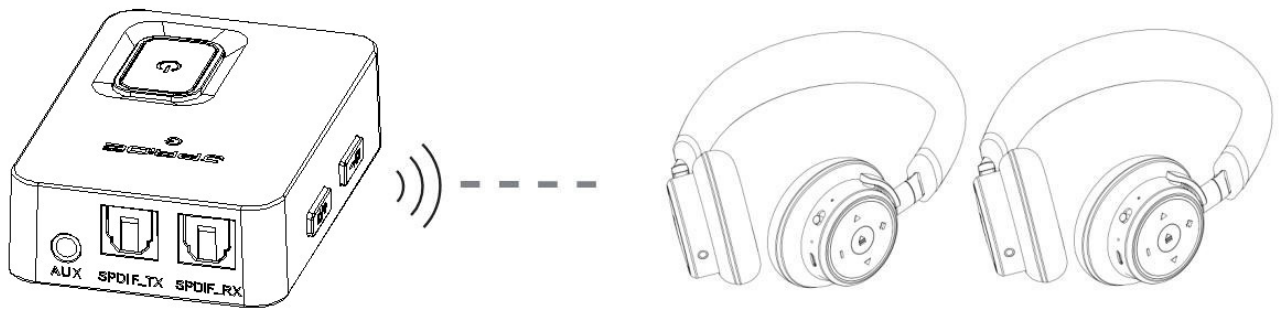


3.2 In TX status connect with two bluetooth devices simultaneously

A . Paired with the first device successfully, then short press the paring button , enter new paring mode , red and blue LED flash alternately.

B . Make the second device (bluetooth headset, speaker or receiver) to power on and enter into paring mode.

C . Put JPT2 together with the second device, wait for 5-30 seconds, after paired successfully, blue LED blink once then disappeared, that means JPT2 has connected with two bluetooth devices simultaneously



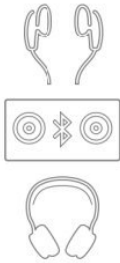
Notes :

*If JPT2 can't connect two devices, please power off then power on again

* When JPT2 is working as Bluetooth transmitter try to connect with two device simultaneously, perhaps can't compatible with all bluetooth devices in the market , some devices has no sound, discontinuous playing or can't connect

3.3 In TX status connect with TV

Connect JPT2 with your TV by 3.5mm audio cable or optical fiber, then It can hear the sound coming from TV in the device which connect with JPT2



Notes :

*If use fiber optic cable, please insert it into SPDIF TX port of JPT2

*If no sound in the Bluetooth device , please use a wired headset insert to the Φ 3.5mm audio port of TV , check if there is sound coming from the TV

*If you couldn't here sound of TV by the bluetooth device, please check the audio setting by remote control, usually TV can set optical fiber, Φ 3.5mm audio, one of the speakers in the TV make sounds, also can set them make sounds simultaneously

4. RX transmitter usage

4.1 In RX status bluetooth pair and connect

A . In power off status pull TX/RX button to RX side , then long press MFB 2 seconds, after blue LED flashes twice, JPT2 power on, when pairing list is clear (JPT2 didn't connect any devices before), power on and automatically enter into pairing mode

B . Power on the unit in standby status, short press“Pairing button” (last for 0.2 second) enter pairing mode, Blue and Red LED flashes alternately; in connected standby status, long press“pairing button” 3 seconds can force out connected status, enter into new pairing mode

C . Put JPT2 with your smart phone (laptop , tablet) together, open the smart phone's bluetooth function, and click search, click connect when JPT2 appeared

D . After connect successfully, blue indicator LED long lit, connect headset or speaker with JPT2 by audio cable or optical fiber, and play music in your smart phone (after playing music the blue indicator LED disappeared) then can listen to music came from smart phone

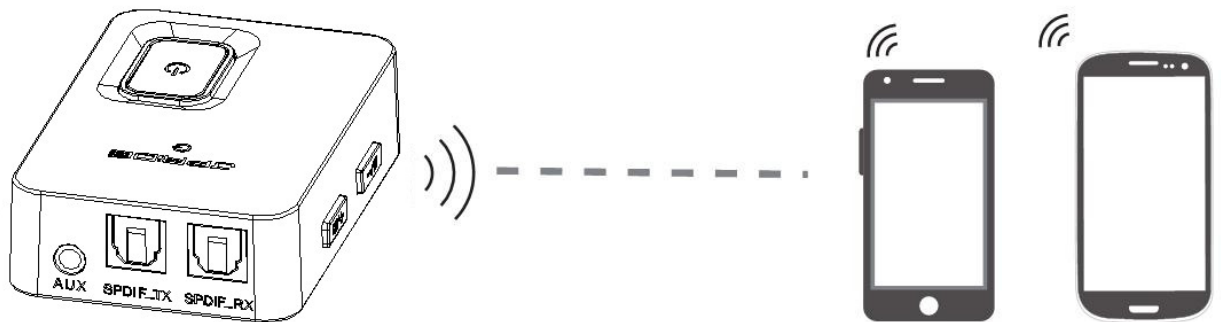
E . When you want to use in AUX mode, just insert the Φ 3.5mm audio cable then SPDIF mode automatically switch to AUX mode; when you want to use in SPDIF mode , pull the Φ 3.5mm audio cable out then automatic switch to SPDIF mode

4.2 In RX status connect with two bluetooth devices simultaneously

A . Paired with the first device successfully, then short press the pairing button , enter new pairing mode , red and blue LED flash alternately.

B . Make the second device (computer, tablet or cellphone) power on and turn on bluetooth function

C . Put JPT2 together with the second device, click the second device's bluetooth search, click connect when JPT2 appeared. After paired successfully, blue LED blink once then disappeared, that means JPT2 has connected with two bluetooth devices simultaneously



Note:

*JPT2 connected two bluetooth devices simultaneously, it only can play one cellphone's music, when you want to play another cellphone's music, you need to pause or close the former cellphone's music

4.3 In RX status connect with speaker

Connect JPT2 with your home speaker by Φ 3.5mm audio cable or optical fiber, then play music in the cellphone (tablet, computer) which has already connected with JPT2 by bluetooth, you can listen to music from the speaker

Notes :

*If use optical fiber, please insert it into SPDIF RX port of JPT2

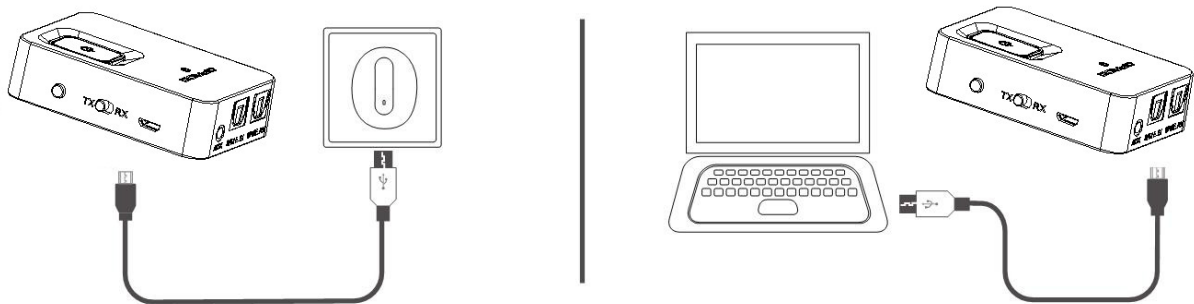
*If there is no sound from the speaker, please insert the audio cable into the cellphone's audio interface to play music, check if there is any problem with the speaker

5. Charging

When JPT2 low battery the red LED flashes, please charge for it immediately, charging time is about 2 hours. When the red LED disappeared, that means the battery is charged fully

Charging operation

Please insert the Micro head into the JPT2 charging port by Micro USB cable, USB head insert into the USB charger (car charger, travel charger, computer's USB etc.)



Notes:

*When JPT2 off work, please at least charge once in two month

*Press the MFB button meanwhile insert into charging cable, can reset to turn it off, when the product have problems you can operate like this to reset

6. Status indicator LED

Status	Indicator LED
Power on (TX/RX)	Blue LED flashes twice
Power off (TX/RX)	Red Led flashes twice
Paring status (TX/RX)	Blue and Red LED flashes alternately
Connected status (TX)	Blue LED blink once then disappeared
Connected standby status (RX)	Blue LED long lit
Connected working status(TX/RX)	All Led disappeared
1 to 2 working status (TX/RX)	All Led disappeared
1 to 2 standby status (RX)	Green LED blink once then disappeared, blue LED long lit
low battery status	Red LED flashes (charging or power off immediately can out of this status)
Charging	Red LED long lit
Charge fully	Red LED disappeared

7. Product specification

Bluetooth version	V4.1
Bluetooth chipset	CSR 8670
Connect distance	Class II , 10m
Bluetooth profile	A2DP、AVRCP
CODEC	RX : AAC、SBC TX : apt-X LL、apt-X 、SBC
Battery	400mAh/3.7V
Charging time	About 2 hours
Standby time	RX status : about 60 hours TX status standby time as the same as working time
Working time	SPDIF mode: about 14 hours AUX mode: about 17 hours
Working temperature	-10---55°C
Net weight	About 44 g
Dimension	70*50*18.8mm

8. Notes and FAQ

A . apt-X LL

apt-X LL is workable only in TX mode, and the bluetooth device which connected with JPT2 also support apt-X LL; if the device only support apt-X , it will automatically switch to apt-X code , otherwise both are SBC; when 1 with two automatically switch to SBC

B . Automatic power off

In RX mode, disconnect any device more than 10 minute or the battery voltage under 3.05V it will automatic power off; in TX mode battery voltage under 3.05V automatic power off

C . How to re-connect ? What can we do when it can' t re-connect ?

After JPT2 connect with bluetooth device successfully, hereafter it will re-connect with your device per power on, if can't re-connect, please pair again

D. How to clear up the paring list ?

Once switch the status, the pairing information for the former mode will be cleared up. So you only need to switch the status then power on, the paring list will be cleared up.

E. What is the paring password ?

If some devices connect with JPT2 need enter password, you can try to enter 0000 (four 0)

F. If there are some problems such as can't power on, connect failed, what can we do ?

You can try to reset it, press the MFB meanwhile insert charging cable to charge, then reset is OK, power on again can normal use.

G. What are the charging voltage and current ? What devices can charge for it ?

As long as the car charger, travel charger, computer USB and so on which their DC voltage is 5V, current exceed 500mA can charge for JPT2.

FCC Statement

This equipment has been tested and found to comply with the limits for a Class B digital device, pursuant to Part 15 of the FCC Rules. These limits are designed to provide reasonable protection against harmful interference in a residential installation. This equipment generates uses and can radiate radio frequency energy and, if not installed and used in accordance with the instructions, may cause harmful interference to radio communications. However, there is no guarantee that interference will not occur in a particular installation. If this equipment does cause harmful interference to radio or television reception, which can be determined by turning the equipment off and on, the user is encouraged to try to correct the interference by one or more of the following measures:

- Reorient or relocate the receiving antenna.
- Increase the separation between the equipment and receiver.
- Connect the equipment into an outlet on a circuit different from that to which the receiver is connected.
- Consult the dealer or an experienced radio/TV technician for help.

This device complies with part 15 of the FCC Rules. Operation is subject to the following two conditions:

(1) This device may not cause harmful interference, and (2) this device must accept any interference received, including interference that may cause undesired operation.

Changes or modifications not expressly approved by the party responsible for compliance could void the user's authority to operate the equipment.