



Shenzhen CTL Testing Technology Co., Ltd.
Tel: +86-755-89486194 E-mail: ctl@ctl-lab.com

TEST REPORT

Report Reference No.: CTL1612072101-SAR

Compiled by:
(position+printed name+signature)

Allen Wang
(File administrators)

Allen Wang

Tested by:
(position+printed name+signature)

Nice Nong
(Test Engineer)

Nice Nong

Approved by:
(position+printed name+signature)

Ivan Xie
(Manager)

Ivan Xie

Product Name.....: Mobile Phone

Model/Type reference: i50F

List Model(s).....: N/A

Trade Mark.....: FreshFun

FCC ID.....: 2ALCI-FRESHFUNI50F

Applicant's name: Ruio Communication Technology Co.,Ltd

Address of applicant: Room 2501, Broadegate Software Building, No,1003 Keyuan
Road, High-Tech Park, Nanshan District, Shenzhen, Guangdong,
China

Authorized Lab.....: Shenzhen CTL Testing Technology Co., Ltd.

Address.....: Floor 1-A, Baisha Technology Park, No.3011, Shahexi Road,
Nanshan District, Shenzhen, China 518055

Test specification

ANSI C95.1-1999

Standard.....: **47CFR §2.1093**

KDB 447498

TRF Originator: Shenzhen CTL Testing Technology Co., Ltd.

Master TRF: Dated 2011-01

Date of Receipt.....: Feb. 16, 2017

Date of Test Date.....: Feb. 20, 2017-Mar. 04, 2017

Data of Issue.....: Mar. 07, 2017

Result.....: Pass

Shenzhen CTL Testing Technology Co., Ltd. All rights reserved.

This publication may be reproduced in whole or in part for non-commercial purposes as long as the Shenzhen CTL Testing Technology Co., Ltd. is acknowledged as copyright owner and source of the material. Shenzhen CTL Testing Technology Co., Ltd. takes no responsibility for and will not assume liability for damages resulting from the reader's interpretation of the reproduced material due to its placement and context.

TEST REPORT

Test Report No. :	CTL1612072101-SAR	Mar. 07, 2017
		Date of issue

Equipment under Test : Mobile Phone

Model /Type : i50F

Listed Models : N/A

Applicant : **Ruio Communication Technology Co.,Ltd**

Address : Room 2501, Broadagate Software Building, No,1003
Keyuan Road, High-Tech Park, Nanshan District,
Shenzhen, Guangdong, China

Manufacturer : **Ruio Communication Technology Co.,Ltd**

Address : Room 2501, Broadagate Software Building, No,1003
Keyuan Road, High-Tech Park, Nanshan District,
Shenzhen, Guangdong, China

Test result	Pass *
--------------------	---------------

* In the configuration tested, the EUT complied with the standards specified page 5.

The test report merely corresponds to the test sample.

It is not permitted to copy extracts of these test result without the written permission of the test laboratory.

**** Modified History ****

Version	Description	Issued Data	Report No.	Remark
Version 1.0	Initial Test Report Release	2017-03-07	CTL1612072101-SAR	Tracy Qi



Table of Contents

Page

1	SUMMARY	5
1.1	TEST STANDARDS	5
1.2	SUMMARY SAR RESULTS	5
1.3	TEST FACILITY	7
1.3.1	Address of the test laboratory	7
1.3.2	Test Lab Facility	7
1.4	STATEMENT OF THE MEASUREMENT UNCERTAINTY	7
1.5	SYSTEM CHECK UNCERTAINTY	8
2	GENERAL INFORMATION	10
2.1	ENVIRONMENTAL CONDITIONS	10
2.2	GENERAL DESCRIPTION OF EUT	10
2.3	DESCRIPTION OF TEST MODES	11
2.4	EQUIPMENTS USED DURING THE TEST	12
2.5	SAR MEASUREMENTS SYSTEM	13
2.5.1	SAR Measurement Set-up	13
2.5.2	DASY4 E-field Probe System	14
2.5.3	Phantoms	15
2.5.4	Device Holder	15
2.5.5	Scanning Procedure	16
2.5.6	Data Storage and Evaluation	19
3	POSITION OF THE WIRELESS DEVICE IN RELATION TO THE PHANTOM	21
3.1	GENERAL CONSIDERATIONS	21
3.2	BODY-WORN DEVICE	22
4	MEASUREMENT PROCEDURES	23
4.1	CONDUCTED POWER MEASUREMENT	23
4.2	SAR MEASUREMENT	23
4.2.1	GSM Test Configuration	23
4.2.2	UMTS Test Configuration	23
4.2.3	LTE Test Configuration	25
4.2.4	WIFI Test Configuration	26
5	TISSUE SIMULATING LIQUID	30
5.1	THE COMPOSITION OF THE TISSUE SIMULATING LIQUID	30
5.2	TISSUE CALIBRATION RESULT	30
6	SYSTEM CHECK	31
7	TEST CONDITIONS AND RESULTS	33
7.1	CONDUCTED POWER RESULTS	33
7.2	SAR TEST RESULTS SUMMARY	41
7.2.1	General Remark	41
7.2.2	Transmit Antennas and SAR Measurement Position	43
7.2.3	Standalone SAR	44
7.2.4	Simultaneous SAR Evaluation	53
7.3	SYSTEM CHECK RESULTS	55
7.4	SAR TEST GRAPH RESULTS	67
8	CALIBRATION CERTIFICATE	85
8.1	PROBE CALIBRATION CERTIFICATE	85
8.2	D750V3 DIPOLE CALIBRATION CERTIFICATE	96
8.3	D835V2 DIPOLE CALIBRATION CERTIFICATE	105
8.4	D1750V2 DIPOLE CALIBRATION CERTIFICATE	113
8.5	D1900V2 DIPOLE CALIBRATION CERTIFICATE	121
8.6	D2450V2 DIPOLE CALIBRATION CERTIFICATE	130
8.7	D2600V2 DIPOLE CALIBRATION CERTIFICATE	139
8.8	DAE4 CALIBRATION CERTIFICATE	148
9	TEST SETUP PHOTOS	152
10	EXTERNAL AND INTERNAL PHOTOS OF THE EUT	156

1 SUMMARY

1.1 TEST STANDARDS

[IEEE Std C95.1, 1999](#): IEEE Standard for Safety Levels with Respect to Human Exposure to Radio Frequency Electromagnetic Fields, 3 KHz to 300 GHz. It specifies the maximum exposure limit of 1.6 W/kg as averaged over any 1 gram of tissue for portable devices being used within 20 cm of the user in the uncontrolled environment.

[IEEE Std 1528™-2003](#): IEEE Recommended Practice for Determining the Peak Spatial-Average Specific Absorption Rate (SAR) in the Human Head from Wireless Communications Devices: Measurement Techniques.

[FCC Part 2.1093 Radiofrequency Radiation Exposure Evaluation](#): Portable Devices

[KDB 447498 D01 Mobile Portable RF Exposure v6](#): Mobile and Portable Device RF Exposure Procedures and Equipment Authorization Policies

[KDB865664 D01 SAR measurement 100 MHz to 6 GHz v01r04](#): SAR Measurement Requirements for 100 MHz to 6 GHz

[KDB865664 D02 SAR Reporting v01r02](#): RF Exposure Compliance Reporting and Documentation Considerations

[KDB648474 D04 Handset SAR V01r03](#): SAR Evaluation Considerations for Wireless Handsets.

[KDB248227 D01 802.11 Wi-Fi SAR v02r01](#): SAR GUIDANCE FOR IEEE 802.11 (Wi-Fi) TRANSMITTERS

[KDB941225 D01 3G SAR Procedures v03r01](#): 3G SAR MEAUREMENT PROCEDURES

[KDB 941225 D06 Hotspot Mode v02r0](#): SAR EVALUATION PROCEDURES FOR PORTABLE DEVICES WITH WIRELESS ROUTER CAPABILITIES

[KDB941225 D05 SAR for LTE Devices v02r05](#): SAR Evaluation Considerations for LTE Devices

1.2 Summary SAR Results

The maximum results of Specific Absorption Rate (SAR) found during testing for EUT are as follows:

Head SAR Configuration

Mode	Test Position	Channel /Frequency(MHz)	(Report 1g SAR(W/Kg)
GSM 850	Left Cheek	190/836.6	0.131
GSM 1900	Right Cheek	661/1880	0.055
WCDMA Band II	Right Cheek	9400/1880	0.064
WCDMA Band V	Right Cheek	4183/836.6	0.098
LTE Band II	Right Cheek	18900/1880	0.053
LTE Band IV	Right Cheek	20175/1732.5	0.050
LTE Band VII	Right Cheek	20850/2510	0.039
LTE Band XII	Right Cheek	23780/707.5	0.409
WLAN2450	Right Cheek	6/2437	0.496

Body-Worn& Hotspot Mode Configuration

Mode	Test Position	Channel /Frequency(MHz)	(Report 1g SAR(W/Kg)
GSM 850	Rear Side	190/836.6	0.657
GSM 1900	Rear Side	661/1880	0.700
WCDMA Band II	Rear Side	9400/1880	0.740
WCDMA Band V	Rear Side	4183/836.6	0.245
LTE Band II	Rear Side	18900/1880	0.795
LTE Band IV	Rear Side	20175/1732.5	0.230
LTE Band VII	Rear Side	20850/2510	0.311
LTE Band XII	Rear Side	23780/707.5	0.763
WLAN2450	Rear Side	6/2437	0.039

Highest Simultaneous transmission SAR Summary

Exposure Position	Transmission Combination	Highest Simultaneous Maximum SAR(W/Kg)
Rear Side	LTE Band II+ WLAN	0.834

Note:

1. This device is compliance with Specific Absorption Rate (SAR) for general population/uncontrolled exposure limits (1.6W/Kg) specified in FCC 47 CFR part 2 (2.1093) and ANSI/IEEE C95.1, and had been tested in accordance with measurement methods and procedures specified in IEEE 1528-2003 and the relevant KDB files.

1.3 Test Facility

1.3.1 Address of the test laboratory

SHENZHEN YIDAJIETONG INFORMATION TECHNOLOGY CO., LTD

No.12 Building Shangsha, Innovation & Technology Park, Futian District, Shenzhen, P.R.China

1.3.2 Test Lab Facility

The test facility is recognized, certified, or accredited by the following organizations:

CNAS-Lab Code: 7547

SHENZHEN YIDA JIETONG INFORMATION TECHNOLOGY CO., LTD has been assessed and proved to be in compliance with CNAS-CL01 Accreditation Criteria for Testing and Calibration Laboratories (identical to ISO/IEC 17025: 2005 General Requirements) for the Competence of Testing and Calibration Laboratories, Date of Registration: Mar 17, 2015. Valid time is until Mar 17, 2018.

1.4 Statement of the measurement uncertainty

No.	Error Description	Type	Uncertainty Value	Probably Distribution	Div.	(Ci) 1g	(Ci) 10g	Std. Unc. (1g)	Std. Unc. (10g)	Degree of freedom
Measurement System										
1	Probe calibration	B	6.55%	N	1	1	1	6.55%	6.55%	∞
2	Axial isotropy	B	4.70%	R	$\sqrt{3}$	0.7	0.7	1.90%	1.90%	∞
3	Hemispherical isotropy	B	9.60%	R	$\sqrt{3}$	0.7	0.7	3.88%	3.88%	∞
4	Boundary Effects	B	1.00%	R	$\sqrt{3}$	1	1	0.58%	0.58%	∞
5	Probe Linearity	B	4.70%	R	$\sqrt{3}$	1	1	2.71%	2.71%	∞
6	Detection limit	B	1.00%	R	$\sqrt{3}$	1	1	0.58%	0.58%	∞
7	Readout Electronics	A	0.30%	N	1	1	1	0.30%	0.30%	∞
8	Response Time	B	0.00%	R	$\sqrt{3}$	1	1	0.00%	0.00%	∞
9	Integration Time	B	0.00%	R	$\sqrt{3}$	1	1	0.00%	0.00%	∞
10	RF ambient conditions-noise	B	1.00%	R	$\sqrt{3}$	1	1	0.58%	0.58%	∞
11	RF ambient conditions-reflection	B	1.00%	R	$\sqrt{3}$	1	1	0.58%	0.58%	∞
12	Probe positioned mech. restrictions	B	0.80%	R	$\sqrt{3}$	1	1	0.46%	0.46%	∞
13	Probe positioning with respect to phantom shell	B	6.70%	R	$\sqrt{3}$	1	1	3.87%	3.87%	∞
14	Max.SAR evaluation	B	2.00%	R	$\sqrt{3}$	1	1	1.15%	1.15%	∞
Test Sample Related										
15	Test sample positioning	A	1.86%	N	1	1	1	1.86%	1.86%	∞
16	Device holder uncertainty	A	1.70%	N	1	1	1	1.70%	1.70%	∞
17	Drift of output	B	5.00%	R	$\sqrt{3}$	1	1	2.89%	2.89%	∞

power										
Phantom and Set-up										
18	Phantom uncertainty	B	4.00%	R	$\sqrt{3}$	1	1	2.31%	2.31%	∞
19	Liquid conductivity (target)	B	5.00%	R	$\sqrt{3}$	0.64	0.4_3	1.85%	1.24%	∞
20	Liquid conductivity (meas.)	A	2.50%	N	1	0.64	0.4_3	1.60%	1.08%	∞
21	Liquid permittivity (target)	B	5.00%	R	$\sqrt{3}$	0.60	0.4_9	1.73%	1.41%	∞
22	Liquid permittivity (meas.)	A	2.50%	N	1	0.60	0.4_9	1.50%	1.23%	∞
Combined standard uncertainty	$u_c = \sqrt{\sum_{i=1}^{22} c_i^2 u_i^2}$		/	/	/	/	/	10.87%	10.63 %	∞
Expanded uncertainty (confidence interval of 95 %)	$u_e = 2u_c$		/	R	K=2	/	/	21.73%	21.27 %	∞

1.5 System Check Uncertainty

No.	Error Description	Type	Uncertainty Value	Probably Distribution	Div.	(Ci) 1g	(Ci) 10g	Std. Unc. (1g)	Std. Unc. (10g)	Degree of freedom
Measurement System										
1	Probe calibration	B	6.55%	N	1	1	1	6.55%	6.55%	∞
2	Axial isotropy	B	4.70%	R	$\sqrt{3}$	0.7	0.7	1.90%	1.90%	∞
3	Hemispherical isotropy	B	9.60%	R	$\sqrt{3}$	0.7	0.7	3.88%	3.88%	∞
4	Boundary Effects	B	1.00%	R	$\sqrt{3}$	1	1	0.58%	0.58%	∞
5	Probe Linearity	B	4.70%	R	$\sqrt{3}$	1	1	2.71%	2.71%	∞
6	Detection limit	B	1.00%	R	$\sqrt{3}$	1	1	0.58%	0.58%	∞
7	Readout Electronics	A	0.30%	N	1	1	1	0.30%	0.30%	∞
8	Response Time	B	0.00%	R	$\sqrt{3}$	1	1	0.00%	0.00%	∞
9	Integration Time	B	0.00%	R	$\sqrt{3}$	1	1	0.00%	0.00%	∞
10	RF ambient conditions-noise	B	1.00%	R	$\sqrt{3}$	1	1	0.58%	0.58%	∞
11	RF ambient conditions-reflection	B	1.00%	R	$\sqrt{3}$	1	1	0.58%	0.58%	∞
12	Probe positioned mech. restrictions	B	0.80%	R	$\sqrt{3}$	1	1	0.46%	0.46%	∞
13	Probe positioning with respect to phantom shell	B	6.70%	R	$\sqrt{3}$	1	1	3.87%	3.87%	∞

14	Max.SAR evaluation	B	2.00%	R	$\sqrt{3}$	1	1	1.15%	1.15%	∞
Dipole Related										
15	Dev. of experimental dipole	B	5.50%	R	$\sqrt{3}$	1	1	3.18%	3.18%	∞
16	Dipole Axis to Liquid Dist.	B	2.00%	R	$\sqrt{3}$	1	1	1.15%	1.15%	∞
17	Input power & SAR drift	B	3.40%	R	$\sqrt{3}$	1	1	1.96%	1.96%	∞
Phantom and Setup										
18	Phantom uncertainty	B	4.00%	R	$\sqrt{3}$	1	1	2.31%	2.31%	∞
19	SAR correction	B	1.90%	R	$\sqrt{3}$	1	$\frac{0.8}{4}$	1.10%	0.92%	
20	Liquid conductivity (meas.)	A	2.50%	N	1	$\frac{0.7}{8}$	$\frac{0.7}{1}$	1.95%	1.78%	∞
21	Liquid permittivity (meas.)	A	2.50%	N	1	$\frac{0.2}{6}$	$\frac{0.2}{6}$	0.65%	0.65%	∞
22	Temp. unc. - Conductivity	B	1.70%	R	$\sqrt{3}$	$\frac{0.7}{8}$	$\frac{0.7}{1}$	0.77%	0.70%	∞
23	Temp. unc. - Permittivity	B	0.30%	R	$\sqrt{3}$	$\frac{0.2}{3}$	$\frac{0.2}{6}$	0.04%	0.05%	∞
Combined standard uncertainty	$u_c = \sqrt{\sum_{i=1}^{23} c_i^2 u_i^2}$	/	/	/	/	/	/	10.65%	10.60%	∞
Expanded uncertainty (confidence interval of 95 %)	$u_e = 2u_c$	/	/	R	K=2	/	/	21.31%	21.20%	∞

2 GENERAL INFORMATION

2.1 Environmental conditions

During the measurement the environmental conditions were within the listed ranges:

Normal Temperature:	15°C -35°C
Relative Humidity	25% -55 %
Air Pressure	101 kPa

2.2 General Description of EUT

Product Name:	Mobile Phone
Model/Type reference:	i50F
Power supply:	DC 3.8V from battery
WIFI :	
Supported type:	802.11b/802.11g/802.11n(H20)/802.11n(H40)
Modulation:	802.11b: DSSS 802.11g/802.11n(H20)/802.11n(H40): OFDM
Operation frequency:	802.11b/802.11g/802.11n(H20): 2412MHz~2462MHz 802.11n(H40): 2422MHz~2452MHz
Channel number:	802.11b/802.11g/802.11n(H20): 11 802.11n(H40): 9
Channel separation:	5MHz
Antenna type:	FPC antenna
Antenna gain:	0dBi
Bluetooth:	
Supported type:	Version 4.0 for low Energy
Modulation:	GFSK
Operation frequency:	2402MHz to 2480MHz
Channel number:	40
Channel separation:	2 MHz
Antenna type:	FPC antenna
Antenna gain:	0dBi
Bluetooth :	
Version:	Supported BT3.0
Modulation:	GFSK, $\pi/4$ DQPSK, 8DPSK
Operation frequency:	2402MHz~2480MHz
Channel number:	79
Channel separation:	1MHz
Antenna type:	FPC antenna
Antenna gain:	0dBi

2G	
Operation Band:	GSM850, GSM900, DCS1800, PCS1900
Supported type:	GPRS, EGPRS
Power Class:	GSM850,GSM900:Power Class 4 DCS1800, PCS1900:Power Class 1
Modulation Type:	GMSK for GSM/GPRS/EGPRS, 8PSK for EGPRS downlink only
GSM Release Version	R99
GPRS Multisport Class	12
EGPRS Multislot Class	12
Antenna type:	PFC antenna
WCDMA	
Operation Band:	FDD Band II, FDD Band V
Power Class:	Power Class 3
Modulation Type:	QPSK for HSUPA/HSDPA
WCDMA Release Version:	R8
HSDPA Release Version:	Release 7, CAT14
HSUPA Release Version:	Release 6, CAT6
DC-HSUPA Release Version:	Not Supported
Antenna type:	PFC antenna
LTE	
Operation Band:	FDD-LTE: Band 2/4/7/12
Modulation Type:	QPSK, 16QAM
Release Version:	Release 9
Category:	Cat 4
Antenna Type:	FPC antenna

Note: For more detailed features description, please refer to the manufacturer's specifications or the User's Manual.

2.3 Description of Test Modes

The EUT battery must be fully charged and checked periodically during the test to ascertain uniform power the EUT has been tested under typical operating condition and The Transmitter was operated in the normal operating mode. The TX frequency was fixed which was for the purpose of the measurements.

2.4 Equipments Used during the Test

Test Equipment	Manufacturer	Type/Model	Serial Number	Calibration	
				Last Calibration	Calibration Interval
Data Acquisition Electronics DAEx	SPEAG	DAE4	1315	2016/07/26	1
E-field Probe	SPEAG	EX3DV4	3836	2016/07/07	1
System Validation Dipole D750V2	SPEAG	D750V3	1133	2015/01/05	3
System Validation Dipole D835V2	SPEAG	D835V2	4d069	2016/07/20	3
System Validation Dipole D1750V2	SPEAG	D1750V2	1021	2016/07/01	3
System Validation Dipole 1900V2	SPEAG	D1900V2	5d194	2015/01/07	3
System Validation Dipole 2450V2	SPEAG	D2450V2	955	2015/01/08	3
System Validation Dipole 2600V2	SPEAG	D2600V2	1058	2014/06/23	3
Network analyzer	Agilent	8753E	US37390562	2016/03/11	1
Wideband Communication Tester	R&S	CMW500	116581	2016/06/18	1
Dielectric Probe Kit	Agilent	85070E	US44020288	/	/
Dual Directional Coupler	Agilent	778D	50127	2016/06/18	1
Dual Directional Coupler	Agilent	772D	50348	2016/06/18	1
Attenuator	PE	PE7005-10	E048	2016/06/18	1
Attenuator	PE	PE7005-3	E049	2016/06/18	1
Attenuator	Woken	WK0602-X X	E050	2016/06/18	1
Power meter	Agilent	E4417A	GB41292254	2016/06/18	1
Power Meter	Agilent	E7356A	GB54762536	2016/06/18	1
Power sensor	Agilent	8481H	MY41095360	2016/06/18	1
Power Sensor	Agilent	E9327A	Us40441788	2016/06/18	1
Signal generator	IFR	2032	203002/100	2016/06/18	1
Amplifier	AR	75A250	302205	2016/06/18	1

Note:

Per KDB865664D01 requirements for dipole calibration, the test laboratory has adopted three year extended calibration interval. Each measured dipole is expected to evaluate with following criteria at least on annual interval.

- There is no physical damage on the dipole;
- System check with specific dipole is within 10% of calibrated values;
- The most recent return-loss results, measured at least annually, deviates by no more than 20% from the previous measurement;
- The most recent measurement of the real or imaginary parts of the impedance, measured at least annually is within 50 Ω from the previous measurement.

2.5 SAR Measurements System

2.5.1 SAR Measurement Set-up

The DASY4 system for performing compliance tests consists of the following items:

A standard high precision 6-axis robot (Stäubli RX family) with controller and software. An arm extension for accommodating the data acquisition electronics (DAE).

A dosimetric probe, i.e. an isotropic E-field probe optimized and calibrated for usage in tissue simulating liquid. The probe is equipped with an optical surface detector system.

A data acquisition electronic (DAE) which performs the signal amplification, signal multiplexing, AD-conversion, offset measurements, mechanical surface detection, collision detection, etc. The unit is battery powered with standard or rechargeable batteries. The signal is optically transmitted to the EOC.

A unit to operate the optical surface detector which is connected to the EOC.

The Electro-Optical Coupler (EOC) performs the conversion from the optical into a digital electric signal of the DAE. The EOC is connected to the DASY4 measurement server.

The DASY4 measurement server, which performs all real-time data evaluation for field measurements and surface detection, controls robot movements and handles safety operation. A computer operating Windows 2003.

DASY4 software and SEMCAD data evaluation software.

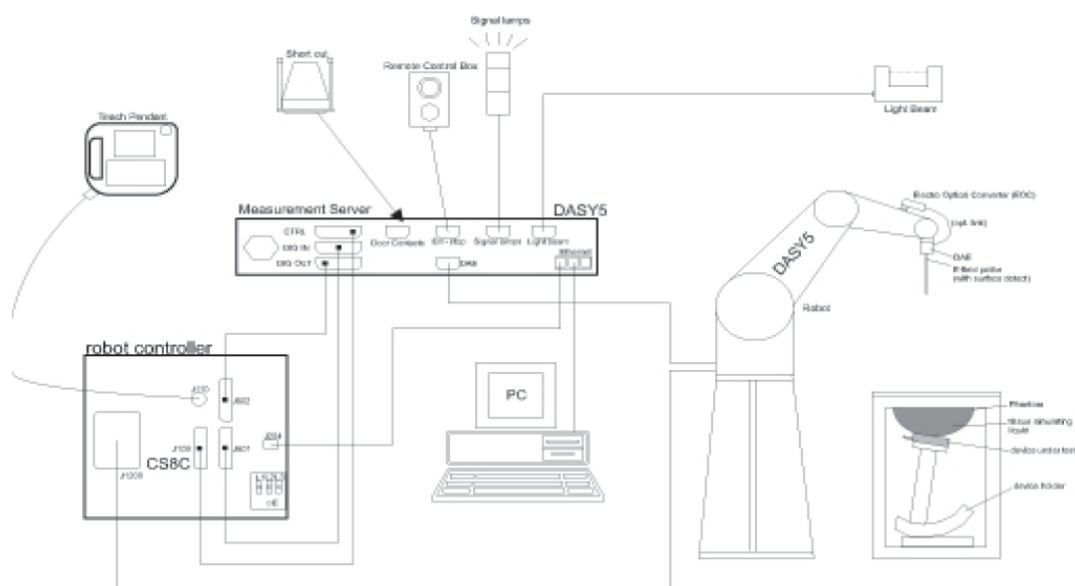
Remote control with teach panel and additional circuitry for robot safety such as warning lamps, etc.

The generic twin phantom enabling the testing of left-hand and right-hand usage.

The device holder for handheld Mobile Phones.

Tissue simulating liquid mixed according to the given recipes.

System validation dipoles allowing to validate the proper functioning of the system.



2.5.2 DASY4 E-field Probe System

The SAR measurements were conducted with the dosimetric probe ES3DV3 (manufactured by SPEAG), designed in the classical triangular configuration and optimized for dosimetric evaluation.

Probe Specification

Construction Symmetrical design with triangular core
Interleaved sensors
Built-in shielding against static charges
PEEK enclosure material (resistant to organic solvents, e.g., DGBE)

Calibration ISO/IEC 17025 calibration service available.

Frequency 10 MHz to 4 GHz;
Linearity: ± 0.2 dB (30 MHz to 4 GHz)

Directivity ± 0.2 dB in HSL (rotation around probe axis)
 ± 0.3 dB in tissue material (rotation normal to probe axis)

Dynamic Range 5 μ W/g to > 100 mW/g;
Linearity: ± 0.2 dB

Dimensions Overall length: 337 mm (Tip: 20 mm)
Tip diameter: 3.9 mm (Body: 12 mm)
Distance from probe tip to dipole centers: 2.0 mm

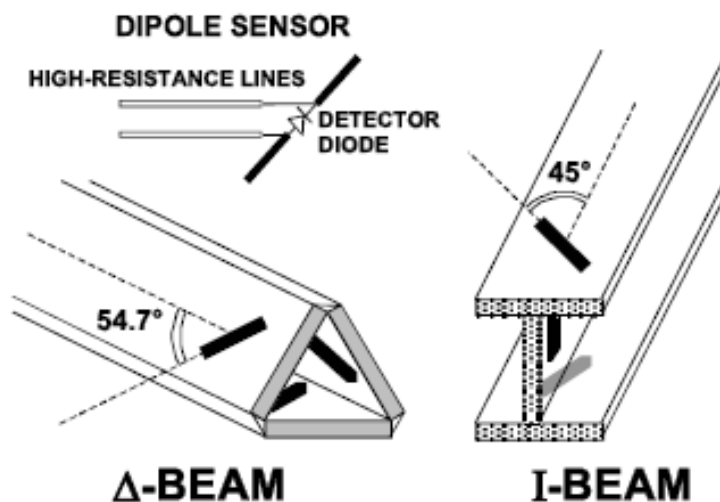
Application General dosimetry up to 4 GHz
Dosimetry in strong gradient fields
Compliance tests of Mobile Phones

Compatibility DASY3, DASY4, DASY52 SAR and higher,
EASY4/MRI

Isotropic E-Field Probe

The isotropic E-Field probe has been fully calibrated and assessed for isotropicity, and boundary effect within a controlled environment. Depending on the frequency for which the probe is calibrated the method utilized for calibration will change.

The E-Field probe utilizes a triangular sensor arrangement as detailed in the diagram below:



2.5.3 Phantoms

The phantom used for all tests i.e. for both system checks and device testing, was the twin-headed "SAM Phantom", manufactured by SPEAG. The SAM twin phantom is a fiberglass shell phantom with 2mm shell thickness (except the ear region, where shell thickness increases to 6mm).

System checking was performed using the flat section, whilst Head SAR tests used the left and right head profile sections. Body SAR testing also used the flat section between the head profiles.



SAM Twin Phantom

2.5.4 Device Holder

The device was placed in the device holder (illustrated below) that is supplied by SPEAG as an integral part of the DASY system.

The DASY device holder is designed to cope with the different positions given in the standard. It has two scales for device rotation (with respect to the body axis) and device inclination (with respect to the line between the ear reference points). The rotation centers for both scales is the ear reference point (ERP). Thus the device needs no repositioning when changing the angles.



Device holder supplied by SPEAG

2.5.5 Scanning Procedure

The DASY4 installation includes predefined files with recommended procedures for measurements and validation. They are read-only document files and destined as fully defined but unmeasured masks. All test positions (head or body-worn) are tested with the same configuration of test steps differing only in the grid definition for the different test positions.

The “reference” and “drift” measurements are located at the beginning and end of the batch process. They measure the field drift at one single point in the liquid over the complete procedure. The indicated drift is mainly the variation of the DUT’s output power and should vary max. $\pm 5\%$.

The “surface check” measurement tests the optical surface detection system of the DASY5 system by repeatedly detecting the surface with the optical and mechanical surface detector and comparing the results. The output gives the detecting heights of both systems, the difference between the two systems and the standard deviation of the detection repeatability. Air bubbles or refraction in the liquid due to separation of the sugar-water mixture gives poor repeatability (above $\pm 0.1\text{mm}$). To prevent wrong results tests are only executed when the liquid is free of air bubbles. The difference between the optical surface detection and the actual surface depends on the probe and is specified with each probe (It does not depend on the surface reflectivity or the probe angle to the surface within $\pm 30^\circ$.)

According to the test standard, the recommended procedure for assessing the peak spatial-average SAR value consists of the following steps:

- (a) Power reference measurement
- (b) Area scan
- (c) Zoom scan
- (d) Power drift measurement

Power Reference Measurement

The Power Reference Measurement and Power Drift Measurements are for monitoring the power drift of the device under test in the batch process. The minimum distance of probe sensors to surface determines the closest measurement point to phantom surface. This distance cannot be smaller than the distance of sensor calibration points to probe tip as defined in the probe properties.

Area Scan

The area scan is used as a fast scan in two dimensions to find the area of high field values, before doing a fine measurement around the hot spot. The sophisticated interpolation routines implemented in DASY software can find the maximum found in the scanned area, within a range of the global maximum. The range (in dB) is specified in the standards for compliance testing. For example, a 2 dB range is required in IEEE standard 1528 and IEC 62209 standards, whereby 3 dB is a requirement when compliance is assessed in accordance with the ARIB standard (Japan), if only one zoom scan follows the area scan, then only the absolute maximum will be taken as reference. For cases where multiple maximums are detected, the number of zoom scans has to be increased accordingly.

Area scan parameters extracted from FCC KDB 865664 D01 SAR measurement 100 MHz to 6 GHz.

	≤ 3 GHz	> 3 GHz
Maximum distance from closest measurement point (geometric center of probe sensors) to phantom surface	5 ± 1 mm	$\frac{1}{2} \cdot \delta \cdot \ln(2) \pm 0.5$ mm
Maximum probe angle from probe axis to phantom surface normal at the measurement location	$30^\circ \pm 1^\circ$	$20^\circ \pm 1^\circ$
Maximum area scan spatial resolution: $\Delta x_{\text{Area}}, \Delta y_{\text{Area}}$	≤ 2 GHz: ≤ 15 mm 2 – 3 GHz: ≤ 12 mm	3 – 4 GHz: ≤ 12 mm 4 – 6 GHz: ≤ 10 mm
	When the x or y dimension of the test device, in the measurement plane orientation, is smaller than the above, the measurement resolution must be \leq the corresponding x or y dimension of the test device with at least one measurement point on the test device.	

Zoom Scan

Zoom scans are used to assess the peak spatial SAR values within a cubic averaging volume containing 1 gram and 10 gram of simulated tissue. The zoom scan measures points (refer to table below) within a cube whose base faces are centered on the maxima found in a preceding area scan job within the same procedure. When the measurement is done, the zoom scan evaluates the averaged SAR for 1 gram and 10 gram and displays these values next to the job's label.

Zoom scan parameters extracted from FCC KDB 865664 D01 SAR measurement 100 MHz to 6 GHz.

Maximum zoom scan spatial resolution: $\Delta x_{\text{Zoom}}, \Delta y_{\text{Zoom}}$			$\leq 2 \text{ GHz}: \leq 8 \text{ mm}$ $2 - 3 \text{ GHz}: \leq 5 \text{ mm}^*$	$3 - 4 \text{ GHz}: \leq 5 \text{ mm}^*$ $4 - 6 \text{ GHz}: \leq 4 \text{ mm}^*$
Maximum zoom scan spatial resolution, normal to phantom surface	uniform grid: $\Delta z_{\text{Zoom}}(n)$		$\leq 5 \text{ mm}$	$3 - 4 \text{ GHz}: \leq 4 \text{ mm}$ $4 - 5 \text{ GHz}: \leq 3 \text{ mm}$ $5 - 6 \text{ GHz}: \leq 2 \text{ mm}$
	graded grid	$\Delta z_{\text{Zoom}}(1)$: between 1 st two points closest to phantom surface	$\leq 4 \text{ mm}$	$3 - 4 \text{ GHz}: \leq 3 \text{ mm}$ $4 - 5 \text{ GHz}: \leq 2.5 \text{ mm}$ $5 - 6 \text{ GHz}: \leq 2 \text{ mm}$
		$\Delta z_{\text{Zoom}}(n>1)$: between subsequent points	$\leq 1.5 \cdot \Delta z_{\text{Zoom}}(n-1)$	
Minimum zoom scan volume	x, y, z		$\geq 30 \text{ mm}$	$3 - 4 \text{ GHz}: \geq 28 \text{ mm}$ $4 - 5 \text{ GHz}: \geq 25 \text{ mm}$ $5 - 6 \text{ GHz}: \geq 22 \text{ mm}$
Note: δ is the penetration depth of a plane-wave at normal incidence to the tissue medium; see draft standard IEEE P1528-2011 for details.				
* When zoom scan is required and the <u>reported</u> SAR from the <i>area scan based 1-g SAR estimation</i> procedures of KDB 447498 is $\leq 1.4 \text{ W/kg}$, $\leq 8 \text{ mm}$, $\leq 7 \text{ mm}$ and $\leq 5 \text{ mm}$ zoom scan resolution may be applied, respectively, for 2 GHz to 3 GHz, 3 GHz to 4 GHz and 4 GHz to 6 GHz.				

Volume Scan Procedures

The volume scan is used to assess overlapping SAR distributions for antennas transmitting in different frequency bands. It is equivalent to an oversized zoom scan used in standalone measurements. The measurement volume will be used to enclose all the simultaneous transmitting antennas. For antennas transmitting simultaneously in different frequency bands, the volume scan is measured separately in each frequency band. In order to sum correctly to compute the 1g aggregate SAR, the EUT remain in the same test position for all measurements and all volume scan use the same spatial resolution and grid spacing. When all volume scan were completed, the software,

SEMCAD postprocessor can combine and subsequently superpose these measurement data to calculating the multiband SAR.

Power Drift Monitoring

All SAR testing is under the EUT install full charged battery and transmit maximum output power. In DASY measurement software, the power reference measurement and power drift measurement procedures are used for monitoring the power drift of EUT during SAR test. Both these procedures measure the field at a specified reference position before and after the SAR testing. The software will calculate the field difference in dB. If the power drifts more than 5%, the SAR will be retested.

Spatial Peak Detection

The procedure for spatial peak SAR evaluation has been implemented according to the test standard. It can be conducted for 1g and 10g, as well as for user-specific masses. The DASY software includes all numerical procedures necessary to evaluate the spatial peak SAR value.

The base for the evaluation is a "cube" measurement. The measured volume must include the 1g and 10g cubes with the highest averaged SAR values. For that purpose, the center of the measured volume is aligned to the interpolated peak SAR value of a previously performed area scan.

The entire evaluation of the spatial peak values is performed within the post-processing engine (SEMCAD). The system always gives the maximum values for the 1g and 10g cubes. The algorithm to find the cube with highest averaged SAR is divided into the following stages:

- (a) Extraction of the measured data (grid and values) from the Zoom Scan
- (b) Calculation of the SAR value at every measurement point based on all stored data (A/D values and measurement parameters)
- (c) Generation of a high-resolution mesh within the measured volume
- (d) Interpolation of all measured values from the measurement grid to the high-resolution grid
- (e) Extrapolation of the entire 3-D field distribution to the phantom surface over the distance from sensor to surface
- (f) Calculation of the averaged SAR within masses of 1g and 10g

2.5.6 Data Storage and Evaluation

Data Storage

The DASY4 software stores the acquired data from the data acquisition electronics as raw data (in microvolt readings from the probe sensors), together with all necessary software parameters for the data evaluation (probe calibration data, liquid parameters and device frequency and modulation data) in measurement files with the extension “.DA4”. The software evaluates the desired unit and format for output each time the data is visualized or exported. This allows verification of the complete software setup even after the measurement and allows correction of incorrect parameter settings. For example, if a measurement has been performed with a wrong crest factor parameter in the device setup, the parameter can be corrected afterwards and the data can be re-evaluated.

The measured data can be visualized or exported in different units or formats, depending on the selected probe type ([V/m], [A/m], [°C], [mW/g], [mW/cm²], [dBrel], etc.). Some of these units are not available in certain situations or show meaningless results, e.g., a SAR output in a lossless media will always be zero. Raw data can also be exported to perform the evaluation with other software packages.

Data Evaluation

The SEMCAD software automatically executes the following procedures to calculate the field units from the microvolt readings at the probe connector. The parameters used in the evaluation are stored in the configuration modules of the software:

Probe parameters:	- Sensitivity	Normi, ai0, ai1, ai2
	- Conversion factor	ConvFi
	- Diode compression point	Dcpi
Device parameters:	- Frequency	f
	- Crest factor	cf
Media parameters:	- Conductivity	σ
	- Density	ρ

These parameters must be set correctly in the software. They can be found in the component documents or they can be imported into the software from the configuration files issued for the DASY4 components. In the direct measuring mode of the multimeter option, the parameters of the actual system setup are used. In the scan visualization and export modes, the parameters stored in the corresponding document files are used.

The first step of the evaluation is a linearization of the filtered input signal to account for the compression characteristics of the detector diode. The compensation depends on the input signal, the diode type and the DC-transmission factor from the diode to the evaluation electronics. If the exciting field is pulsed, the crest factor of the signal must be known to correctly compensate for peak power. The formula for each channel can be given as:

$$V_i = U_i + U_i^2 \cdot \frac{cf}{dcp_i}$$

With	V_i = compensated signal of channel i	(i = x, y, z)
	U_i = input signal of channel i	(i = x, y, z)
	cf = crest factor of exciting field	(DASY parameter)
	dcp _i = diode compression point	(DASY parameter)

From the compensated input signals the primary field data for each channel can be evaluated:

$$E - \text{fieldprobes} : E_i = \sqrt{\frac{V_i}{\text{Norm}_i \cdot \text{ConvF}}}$$

$$H - \text{fieldprobes} : H_i = \sqrt{V_i} \cdot \frac{a_{i0} + a_{i1}f + a_{i2}f^2}{f}$$

With	V_i	= compensated signal of channel i	(i = x, y, z)
	Normi	= sensor sensitivity of channel i	(i = x, y, z)
		[mV/(V/m)²] for E-field Probes	
	ConvF	= sensitivity enhancement in solution	
	aij	= sensor sensitivity factors for H-field probes	

f	= carrier frequency [GHz]
E _i	= electric field strength of channel i in V/m
H _i	= magnetic field strength of channel i in A/m

The RSS value of the field components gives the total field strength (Hermitian magnitude):

$$E_{tot} = \sqrt{E_x^2 + E_y^2 + E_z^2}$$

The primary field data are used to calculate the derived field units.

$$SAR = E_{tot}^2 \cdot \frac{\sigma}{\rho \cdot 1'000}$$

with	SAR	= local specific absorption rate in mW/g
	E _{tot}	= total field strength in V/m
	σ	= conductivity in [mho/m] or [Siemens/m]
	ρ	= equivalent tissue density in g/cm ³

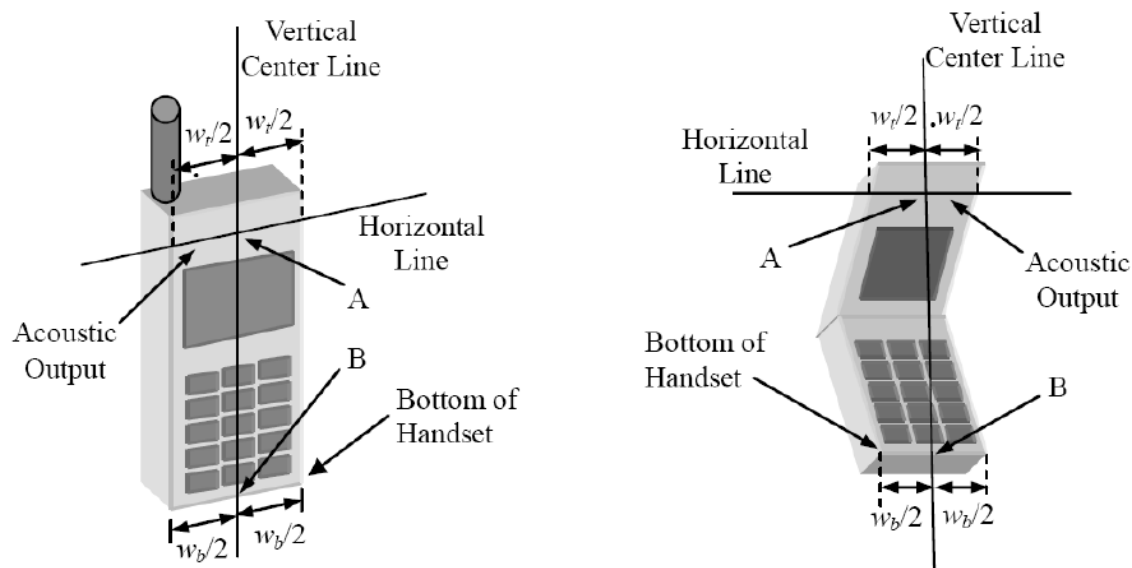
Note that the density is normally set to 1 (or 1.06), to account for actual brain density rather than the density of the simulation liquid.



3 Position of the wireless device in relation to the phantom

3.1 General considerations

This standard specifies two handset test positions against the head phantom – the “cheek” position and the “tilt” position.



W_t

W_b

A
level of the acoustic output

B
handset

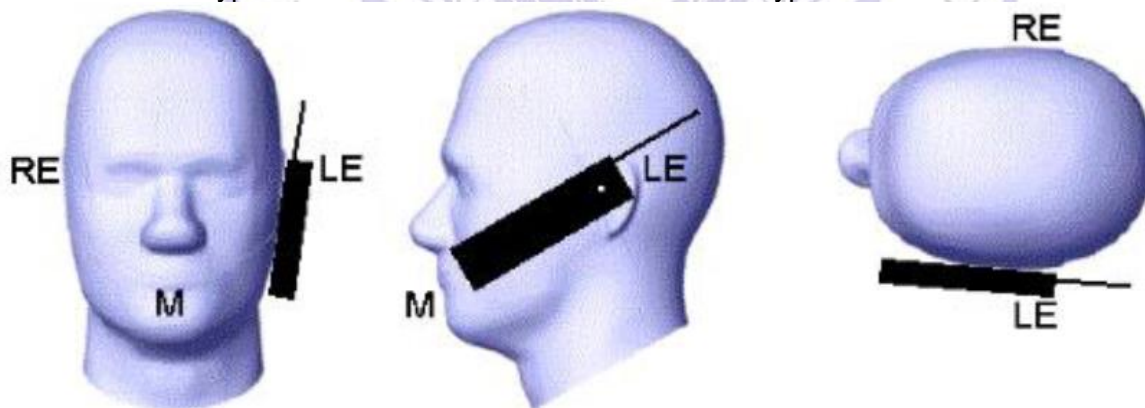
Width of the handset at the level of the acoustic

Width of the bottom of the handset

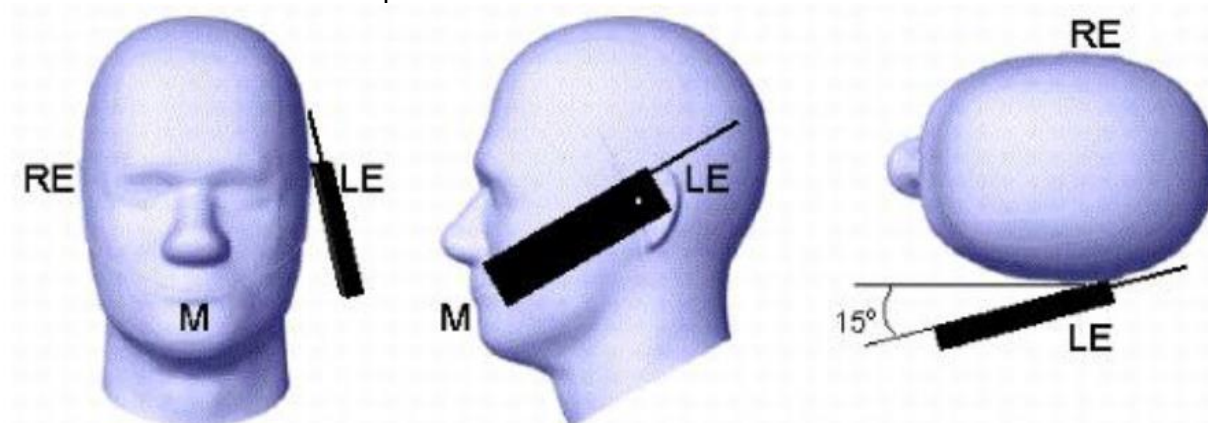
Midpoint of the width w_t of the handset at the

Midpoint of the width w_b of the bottom of the

Picture 1-a Typical “fixed” case handset Picture 1-b Typical “clam-shell” case handset



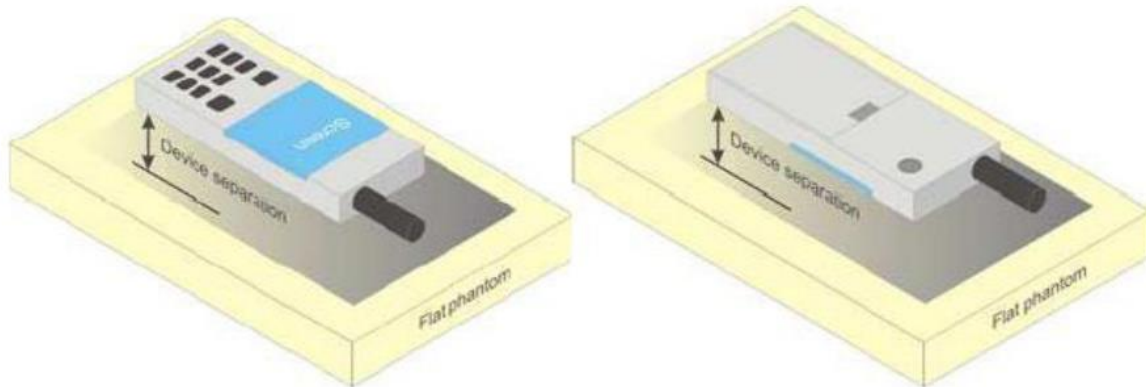
Picture 2 Cheek position of the wireless device on the left side of SAM



Picture 3 Tilt position of the wireless device on the left side of SAM

3.2 Body-worn device

A typical example of a body-worn device is a Mobile Phone, wireless enabled PDA or other battery operated wireless device with the ability to transmit while mounted on a person's body using a carry accessory approved by the wireless device manufacturer.



Picture 4 Test positions for body-worn devices



4 Measurement Procedures

The measurement procedures are as follows:

4.1 Conducted power measurement

- a) For WWAN power measurement, use base station simulator connection with RF cable, at maximum power in each supported wireless interface and frequency band.
- b) Read the WWAN RF power level from the base station simulator.
- c) For WLAN/BT power measurement, use engineering software to configure EUT WLAN/BT continuously Transmission, at maximum RF power in each supported wireless interface and frequency band.
- d) Connect EUT RF port through RF cable to the power meter, and measure WLAN/BT output power.

4.2 SAR measurement

4.2.1 GSM Test Configuration

SAR tests for GSM 850 and GSM 1900, a communication link is set up with a System Simulator (SS) by air link. The power level is set to “5” for GSM 850, set to “0” for GSM 1900. Since the GPRS class is 12 for this EUT, it has at most 4 timeslots in uplink and at most 4 timeslots in downlink, the maximum total timeslots is 5. The EGPRS class is 12 for this EUT, it has at most 4 timeslots in uplink and at most 4 timeslots in downlink, the maximum total timeslots is 5.

When SAR tests for EGPRS mode is necessary, GMSK modulation should be used to minimize SAR measurement error due to higher peak-to-average power (PAR) ratios inherent in 8-PSK.

According to specification 3GPP TS 51.010, the maximum power of the GSM can do the power reduction for the multi-slot. The allowed power reduction calculation method are shown in chapter 8.1 NOTES 1).

4.2.2 UMTS Test Configuration

3G SAR Test Reduction Procedure

In the following procedures, the mode tested for SAR is referred to as the primary mode. The equivalent modes considered for SAR test reduction are denoted as secondary modes. Both primary and secondary modes must be in the same frequency band. When the maximum output power and tune-up tolerance specified for production units in a secondary mode is $\leq 1/4$ dB higher than the primary mode or when the highest reported SAR of the primary mode is scaled by the ratio of specified maximum output power and tune-up tolerance of secondary to primary mode and the adjusted SAR is ≤ 1.2 W/kg, SAR measurement is not required for the secondary mode.³ This is referred to as the 3G SAR test reduction procedure in the following SAR test guidance, where the primary mode is identified in the applicable wireless mode test procedures and the secondary mode is wireless mode being considered for SAR test reduction by that procedure. When the 3G SAR test reduction procedure is not satisfied, it is identified as “otherwise” in the applicable procedures; SAR measurement is required for the secondary mode.

Output power Verification

Maximum output power is verified on the high, middle and low channels according to procedures described in section 5.2 of 3GPP TS 34.121, using the appropriate RMC or AMR with TPC (transmit power control) set to all “1’s” for WCDMA/HSDPA or by applying the required inner loop power control procedures to maintain maximum output power while HSUPA is active. Results for all applicable physical channel configurations (DPCCH, DPDCHn and spreading codes, HSDPA, HSPA) are required in the SAR report. All configurations that are not supported by the handset or cannot be measured due to technical or equipment limitations must be clearly identified.

Head SAR

SAR for next to the ear head exposure is measured using a 12.2 kbps RMC with TPC bits configured to all "1's". The 3G SAR test reduction procedure is applied to AMR configurations with 12.2 kbps RMC as the primary mode. Otherwise, SAR is measured for 12.2 kbps AMR in 3.4 kbps SRB (signaling radio bearer) using the highest reported SAR configuration in 12.2 kbps RMC for head exposure.

Body-Worn Accessory SAR

SAR for body-worn accessory configurations is measured using a 12.2 kbps RMC with TPC bits configured to all "1's". The 3G SAR test reduction procedure is applied to other spreading codes and multiple DPDCHn configurations supported by the handset with 12.2 kbps RMC as the primary mode. Otherwise, SAR is measured using an applicable RMC configuration with the corresponding spreading code or DPDCHn, for the highest reported body-worn accessory exposure SAR configuration in 12.2 kbps RMC. When more than 2 DPDCHn are supported by the handset, it may be necessary to configure additional DPDCHn using FTM (Factory Test Mode) or other chipset based test approaches with parameters similar to those used in 384 kbps and 768 kbps RMC.

Handsets with Release 5 HSDPA

The 3G SAR test reduction procedure is applied to HSDPA body-worn accessory configurations with 12.2 kbps RMC as the primary mode. Otherwise, SAR is measured for HSDPA using the HSDPA body SAR procedures in the "Release 5 HSDPA Data Devices" section of this document, for the highest reported SAR body-worn accessory exposure configuration in 12.2 kbps RMC. Handsets with both HSDPA and HSUPA are tested according to Release 6 HSPA test procedures.

HSDPA should be configured according to the UE category of a test device. The number of HSDSCH/ HS-PDSCHs, HARQ processes, minimum inter-TTI interval, transport block sizes and RV coding sequence are defined by the H-set. To maintain a consistent test configuration and stable transmission conditions, QPSK is used in the H-set for SAR testing. HS-DPCCH should be configured with a CQI feedback cycle of 4 ms with a CQI repetition factor of 2 to maintain a constant rate of active CQI slots. DPCCH and DPDCH gain factors (β_c , β_d), and HS-DPCCH power offset parameters (Δ_{ACK} , Δ_{NACK} , Δ_{CQI}) should be set according to values indicated in the Table below. The CQI value is determined by the UE category, transport block size, number of HS-PDSCHs and modulation used in the H-set.

Table 2: Subtests for UMTS Release 5 HSDPA

Sub-set	β_c	β_d	β_d (SF)	β_c/β_d	β_{hs} (note 1, note 2)	CM(dB) (note 3)	MPR(dB)
1	2/15	15/15	64	2/15	4/15	0.0	0.0
2	12/15 (note 4)	15/15 (note 4)	64	12/15 (note 4)	24/15	1.0	0.0
3	15/15	8/15	64	15/8	30/15	1.5	0.5
4	15/15	4/15	64	15/4	30/15	1.5	0.5
<p>Note1: Δ_{ACK}, Δ_{NACK} and Δ_{CQI} are 3 dB. $A_{hs} = \beta_{hs}/\beta_c = 30/15$ $\beta_{hs} = 30/15 * \beta_c$</p> <p>Note2: CM=1 for $\beta_c/\beta_d = 12/15$, $\beta_{hs}/\beta_c = 24/15$.</p> <p>Note3: For subtest 2 the β_c/β_d ratio of 12/15 for the TFC during the measurement period (TF1, TF0) is achieved by setting the signaled gain factors for the reference TFC (TFC1, TF1) to $\beta_c = 11/15$ and $\beta_d = 15/15$.</p>							

HSUPA Test Configuration

The 3G SAR test reduction procedure is applied to HSPA (HSUPA/HSDPA with RMC) body-worn accessory configurations with 12.2 kbps RMC as the primary mode. Otherwise, SAR is measured for HSPA using the HSPA body SAR procedures in the "Release 6 HSPA Data Devices" section of this document, for the highest reported body-worn accessory exposure SAR configuration in 12.2 kbps RMC. When VOIP is applicable for next to the ear head exposure in HSPA, the 3G SAR test reduction procedure is applied to HSPA with 12.2 kbps RMC as the primary mode; otherwise, the same HSPA configuration used for body-worn accessory measurements is tested for next to the ear head exposure.

Due to inner loop power control requirements in HSPA, a communication test set is required for output power and SAR tests. The 12.2 kbps RMC, FRC H-set 1 and E-DCH configurations for HSPA are configured according to the β values indicated in Table 2 and other applicable procedures described in the 'WCDMA Handset' and 'Release 5 HSDPA Data Devices' sections of this document

Table 3: Sub-Test 5 Setup for Release 6 HSUPA

Sub-set	β_c	β_d	β_d (SF)	β_c/β_d	$\beta_{hs}^{(1)}$	β_{ec}	β_{ed}	β_{ed} (SF)	β_{ed} (codes)	CM ⁽²⁾ (dB)	MPR (dB)	AG ⁽⁴⁾ Index	E-TFCI
1	11/15 ⁽³⁾	15/15 ⁽³⁾	64	11/15 ⁽³⁾	22/15	209/225	1039/225	4	1	1.0	0.0	20	75
2	6/15	15/15	64	6/15	12/15	12/15	94/75	4	1	3.0	2.0	12	67
3	15/15	9/15	64	15/9	30/15	30/15	$\beta_{ed1}:47/15$ $\beta_{ed2}:47/15$	4	2	2.0	1.0	15	92
4	2/15	15/15	64	2/15	4/15	2/15	56/75	4	1	3.0	2.0	17	71
5	15/15 ⁽⁴⁾	15/15 ⁽⁴⁾	64	15/15 ⁽⁴⁾	30/15	24/15	134/15	4	1	1.0	0.0	21	81

Note 1: Δ_{ACK} , Δ_{NACK} and $\Delta_{CQI} = 8 \Leftrightarrow A_{hs} = \beta_{hs}/\beta_c = 30/15 \Leftrightarrow \beta_{hs} = 30/15 * \beta_c$.

Note 2: CM = 1 for $\beta_c/\beta_d = 12/15$, $\beta_{hs}/\beta_c = 24/15$. For all other combinations of DPDCH, DPCCH, HS-DPCCH, E-DPDCH and E-DPCCH the MPR is based on the relative CM difference.

Note 3: For subtest 1 the β_c/β_d ratio of 11/15 for the TFC during the measurement period (TF1, TF0) is achieved by setting the signaled gain factors for the reference TFC (TF1, TF1) to $\beta_c = 10/15$ and $\beta_d = 15/15$.

Note 4: For subtest 5 the β_c/β_d ratio of 15/15 for the TFC during the measurement period (TF1, TF0) is achieved by setting the signaled gain factors for the reference TFC (TF1, TF1) to $\beta_c = 14/15$ and $\beta_d = 15/15$.

Note 5: Testing UE using E-DPDCH Physical Layer category 1 Sub-test 3 is not required according to TS 25.306 Figure 5.1g.

Note 6: β_{ed} can not be set directly; it is set by Absolute Grant Value.

4.2.3 LTE Test Configuration

QPSK with 1 RB allocation

Start with the largest channel bandwidth and measure SAR for QPSK with 1 RB allocation, using the RB offset and required test channel combination with the highest maximum output power among RB offsets at the upper edge, middle and lower edge of each required test channel. When the reported SAR is ≤ 0.8 W/kg, testing of the remaining RB offset configurations and required test channels is not required for 1 RB allocation; otherwise, SAR is required for the remaining required test channels and only for the RB offset configuration with the highest output power for that channel. When the reported SAR of a required test channel is > 1.45 W/kg, SAR is required for all three RB offset configurations for that required test channel.

QPSK with 50% RB allocation

The procedures required for 1 RB allocation in section 4.2.1 are applied to measure the SAR for QPSK with 50% RB allocation.

QPSK with 100% RB allocation

For QPSK with 100% RB allocation, SAR is not required when the highest maximum output power for 100 % RB allocation is less than the highest maximum output power in 50% and 1 RB allocations and the highest reported SAR for 1 RB and 50% RB allocation in sections 4.2.1 and 4.2.2 are ≤ 0.8 W/kg. Otherwise, SAR is measured for the highest output power channel; and if the reported SAR is > 1.45 W/kg, the remaining required test channels must also be tested.

Higher order modulations

For each modulation besides QPSK; e.g., 16-QAM, 64-QAM, apply the QPSK procedures in sections 4.2.1, 5.2.2 and 4.2.3 to determine the QAM configurations that may need SAR measurement. For each configuration identified as required for testing, SAR is required only when the highest maximum output power for the configuration in the higher order modulation is $> \frac{1}{2}$ dB higher than the same configuration in QPSK or when the reported SAR for the QPSK configuration is > 1.45 W/kg.

4.2.4 WIFI Test Configuration

The SAR measurement and test reduction procedures are structured according to either the DSSS or OFDM transmission mode configurations used in each standalone frequency band and aggregated band. For devices that operate in exposure configurations that require multiple test positions, additional SAR test reduction may be applied. The maximum output power specified for production units, including tune-up tolerance, are used to determine initial SAR test requirements for the 802.11 transmission modes in a frequency band. SAR is measured using the highest measured maximum output power channel for the initial test configuration. SAR measurement and test reduction for the remaining 802.11 modes and test channels are determined according to measured or specified maximum output power and reported SAR of the initial measurements. The general test reduction and SAR measurement approaches are summarized in the following:

1. The maximum output power specified for production units are determined for all applicable 802.11 transmission modes in each standalone and aggregated frequency band. Maximum output power is measured for the highest maximum output power configuration(s) in each frequency band according to the default power measurement procedures. Channels with measured maximum output power within $\frac{1}{4}$ dB are considered to have the same maximum output.
2. For OFDM transmission configurations in the 2.4 GHz and 5 GHz bands, an “initial test configuration” is first determined for each standalone and aggregated frequency band according to the maximum output power and tune-up tolerance specified for production units.
 - a. When the same maximum power is specified for multiple transmission modes in a frequency band, the largest channel bandwidth, lowest order modulation, lowest data rate and lowest order 802.11a/g/n/ac mode is used for SAR measurement, on the highest measured output power channel in the initial test configuration, for each frequency band.
 - b. SAR is measured for OFDM configurations using the initial test configuration procedures. Additional frequency band specific SAR test reduction may be considered for individual frequency bands
 - c. Depending on the reported SAR of the highest maximum output power channel tested in the initial test configuration, SAR test reduction may apply to subsequent highest output channels in the initial test configuration to reduce the number of SAR measurements.
3. The Initial test configuration does not apply to DSSS. The 2.4 GHz band SAR test requirements and 802.11b DSSS procedures are used to establish the transmission configurations required for SAR measurement.
4. An “initial test position” is applied to further reduce the number of SAR tests for devices operating in next to the ear, UMPC mini-tablet or hotspot mode exposure configurations that require multiple test positions.
 - a. SAR is measured for 802.11b according to the 2.4 GHz DSSS procedure using the exposure condition established by the initial test position.
 - b. SAR is measured for 2.4 GHz and 5 GHz OFDM configurations using the initial test configuration. 802.11b/g/n operating modes are tested independently according to the service requirements in each frequency band. 802.11b/g/n modes are tested on the maximum average output channel.
5. The Initial test position does not apply to devices that require a fixed exposure test position. SAR is measured in a fixed exposure test position for these devices in 802.11b according to the 2.4 GHz DSSS procedure or in 2.4 GHz and 5 GHz OFDM configurations using the initial test configuration procedures.
6. The “subsequent test configuration” procedures are applied to determine if additional SAR measurements are required for the remaining OFDM transmission modes that have not been tested in the initial test configuration. SAR test exclusion is determined according to reported SAR in the initial test configuration and maximum output power specified or measured for these other OFDM configurations.

2.4 GHz SAR Procedures

Separate SAR procedures are applied to DSSS and OFDM configurations in the 2.4 GHz band to simplify DSSS test requirements. For 802.11b DSSS SAR measurements, DSSS SAR procedure applies to fixed exposure test position and initial test position procedure applies to multiple exposure test positions. When SAR measurement is required for an OFDM configuration, the initial test configuration, subsequent test configuration and initial test position procedures are applied. The SAR test exclusion requirements for 802.11g/n OFDM configurations are described in section 5.2.2.

1. 802.11b DSSS SAR Test Requirements

SAR is measured for 2.4 GHz 802.11b DSSS using either a fixed test position or, when applicable, the initial test position procedure. SAR test reduction is determined according to the following:

- a. When the reported SAR of the highest measured maximum output power channel (section 3.1) for the exposure configuration is ≤ 0.8 W/kg, no further SAR testing is required for 802.11b DSSS in that exposure configuration.
- b. When the reported SAR is > 0.8 W/kg, SAR is required for that exposure configuration using the next highest measured output power channel. When any reported SAR is > 1.2 W/kg, SAR is required for the third channel; i.e., all channels require testing.

1. 2.4 GHz 802.11g/n OFDM SAR Test Exclusion Requirements

When SAR measurement is required for 2.4 GHz 802.11g/n OFDM configurations, the measurement and test reduction procedures for OFDM are applied (section 5.3). SAR is not required for the following 2.4 GHz OFDM conditions.

- a. When KDB Publication 447498 SAR test exclusion applies to the OFDM configuration
- b. When the highest reported SAR for DSSS is adjusted by the ratio of OFDM to DSSS specified maximum output power and the adjusted SAR is ≤ 1.2 W/kg.

2. SAR Test Requirements for OFDM Configurations

When SAR measurement is required for 802.11 a/g/n/ac OFDM configurations, each standalone and frequency aggregated band is considered separately for SAR test reduction. When the same transmitter and antenna(s) are used for U-NII-1 and U-NII-2A bands, additional SAR test reduction applies. When band gap channels between U-NII-2C band and 5.8 GHz U-NII-3 or §15.247 band are supported, the highest maximum output power transmission mode configuration and maximum output power channel across the bands must be used to determine SAR test reduction, according to the initial test configuration and subsequent test configuration requirements.²⁰ In applying the initial test configuration and subsequent test configuration procedures, the 802.11 transmission configuration with the highest specified maximum output power and the channel within a test configuration with the highest measured maximum output power should be clearly distinguished to apply the procedures.

3. OFDM Transmission Mode SAR Test Configuration and Channel Selection Requirements

The initial test configuration for 2.4 GHz and 5 GHz OFDM transmission modes is determined by the 802.11 configuration with the highest maximum output power specified for production units, including tune-up tolerance, in each standalone and aggregated frequency band. SAR for the initial test configuration is measured using the highest maximum output power channel determined by the default power measurement procedures (section 4). When multiple configurations in a frequency band have the same specified maximum output power, the initial test configuration is determined according to the following steps applied sequentially.

- a. The largest channel bandwidth configuration is selected among the multiple configurations with the same specified maximum output power.
- b. If multiple configurations have the same specified maximum output power and largest channel bandwidth, the lowest order modulation among the largest channel bandwidth configurations is selected.
- c. If multiple configurations have the same specified maximum output power, largest channel bandwidth and lowest order modulation, the lowest data rate configuration among these configurations is selected.
- d. When multiple transmission modes (802.11a/g/n/ac) have the same specified maximum output power, largest channel bandwidth, lowest order modulation and lowest data rate, the lowest order 802.11 mode is selected; i.e., 802.11a is chosen over 802.11n then 802.11ac or 802.11g is chosen over 802.11n.

After an initial test configuration is determined, if multiple test channels have the same measured maximum output power, the channel chosen for SAR measurement is determined according to the following. These channel selection procedures apply to both the initial test configuration and subsequent test configuration(s), with respect to the default power measurement procedures or additional power measurements required for further SAR test reduction. The same procedures also apply to subsequent highest output power channel(s) selection.

- a. Channels with measured maximum output power within $\frac{1}{4}$ dB of each other are considered to have the same maximum output.
- b. When there are multiple test channels with the same measured maximum output power, the channel closest to mid-band frequency is selected for SAR measurement.
- c. When there are multiple test channels with the same measured maximum output power and equal separation from mid-band frequency; for example, high and low channels or two mid-band channels, the higher frequency (number) channel is selected for SAR measurement.

4. Initial Test Configuration Procedures

An initial test configuration is determined for OFDM transmission modes according to the channel bandwidth, modulation and data rate combination(s) with the highest maximum output power specified for production units in each standalone and aggregated frequency band. SAR is measured using the highest measured maximum output power channel. For configurations with the same specified or measured maximum output power, additional transmission mode and test channel selection procedures are required (see section 5.3.2). SAR test reduction of subsequent highest output test channels is based on the reported SAR of the initial test configuration.

For next to the ear, hotspot mode and UMC mini-tablet exposure configurations where multiple test positions are required, the initial test position procedure is applied to minimize the number of test positions required for SAR measurement using the initial test configuration transmission mode.²³ For fixed exposure conditions that do not have multiple SAR test positions, SAR is measured in the transmission mode determined by the initial test configuration. When the reported SAR of the initial test configuration is > 0.8 W/kg, SAR measurement is required for the subsequent next highest measured output power channel(s) in the initial test configuration until the reported SAR is ≤ 1.2 W/kg or all required channels are tested.

5. Subsequent Test Configuration Procedures

SAR measurement requirements for the remaining 802.11 transmission mode configurations that have not been tested in the initial test configuration are determined separately for each standalone and aggregated frequency band, in each exposure condition, according to the maximum output power specified for production units. The initial test position procedure is applied to next to the ear, UMPC mini-tablet and hotspot mode configurations. When the same maximum output power is specified for multiple transmission modes, the procedures in section 5.3.2 are applied to determine the test configuration. Additional power measurements may be required to determine if SAR measurements are required for subsequent highest output power channels in a subsequent test configuration. The subsequent test configuration and SAR measurement procedures are described in the following.

- a. When SAR test exclusion provisions of KDB Publication 447498 are applicable and SAR measurement is not required for the initial test configuration, SAR is also not required for the next highest maximum output power transmission mode subsequent test configuration(s) in that frequency band or aggregated band and exposure configuration.
- b. When the highest reported SAR for the initial test configuration (when applicable, include subsequent highest output channels), according to the initial test position or fixed exposure position requirements, is adjusted by the ratio of the subsequent test configuration to initial test configuration specified maximum output power and the adjusted SAR is ≤ 1.2 W/kg, SAR is not required for that subsequent test configuration.
- c. The number of channels in the initial test configuration and subsequent test configuration can be different due to differences in channel bandwidth. When SAR measurement is required for a subsequent test configuration and the channel bandwidth is smaller than that in the initial test configuration, all channels in the subsequent test configuration that overlap with the larger bandwidth channel tested in the initial test configuration should be used to determine the highest maximum output power channel. This step requires additional power measurement to identify the

highest maximum output power channel in the subsequent test configuration to determine SAR test reduction.

- 1). SAR should first be measured for the channel with highest measured output power in the subsequent test configuration.
- 2). SAR for subsequent highest measured maximum output power channels in the subsequent test configuration is required only when the reported SAR of the preceding higher maximum output power channel(s) in the subsequent test configuration is $> 1.2 \text{ W/kg}$ or until all required channels are tested.
 - a) For channels with the same measured maximum output power, SAR should be measured using the channel closest to the center frequency of the larger channel bandwidth channel in the initial test configuration.

- d. SAR measurements for the remaining highest specified maximum output power OFDM transmission mode configurations that have not been tested in the initial test configuration (highest maximum output) or subsequent test configuration(s) (subsequent next highest maximum output power) is determined by applying the subsequent test configuration procedures in this section to the remaining configurations according to the following:

- 1) replace “subsequent test configuration” with “next subsequent test configuration” (i.e., subsequent next highest specified maximum output power configuration)
- 2) replace “initial test configuration” with “all tested higher output power configurations”



5 TISSUE SIMULATING LIQUID

For SAR measurement of the field distribution inside the phantom, the phantom must be filled with homogeneous tissue simulating liquid to a depth of at least 15cm. For head SAR testing the liquid height from the ear reference point (ERP) of the phantom to the liquid top surface is larger than 15cm. For body SAR testing, the liquid height from the center of the flat phantom to the liquid top surface is larger than 15cm. The nominal dielectric values of the tissue simulating liquids in the phantom and the tolerance of 5% are listed in 5.2

5.1 The composition of the tissue simulating liquid

Ingredient (% Weight)	835MHz		1900MHz		1750 MHz		2450MHz		2600MHz	
	Head	Body	Head	Body	Head	Body	Head	Body	Head	Body
Water	41.45	52.5	55.242	69.91	55.782	69.82	62.7	73.2	62.3	72.6
Salt	1.45	1.40	0.306	0.13	0.401	0.12	0.50	0.10	0.20	0.10
Sugar	56	45.0	0.00	0.00	0.00	0.00	0.00	0.00	0.00	0.00
Preventol	0.10	0.10	0.00	0.00	0.00	0.00	0.00	0.00	0.00	0.00
HEC	1.00	1.00	0.00	0.00	0.00	0.00	0.00	0.00	0.00	0.00
DGBE	0.00	0.00	44.452	29.96	43.817	30.06	36.8	26.7	37.5	27.3

5.2 Tissue Calibration Result

The dielectric parameters of the liquids were verified prior to the SAR evaluation using Agilent Dielectric Probe Kit and Agilent Network Analyzer 8753E.

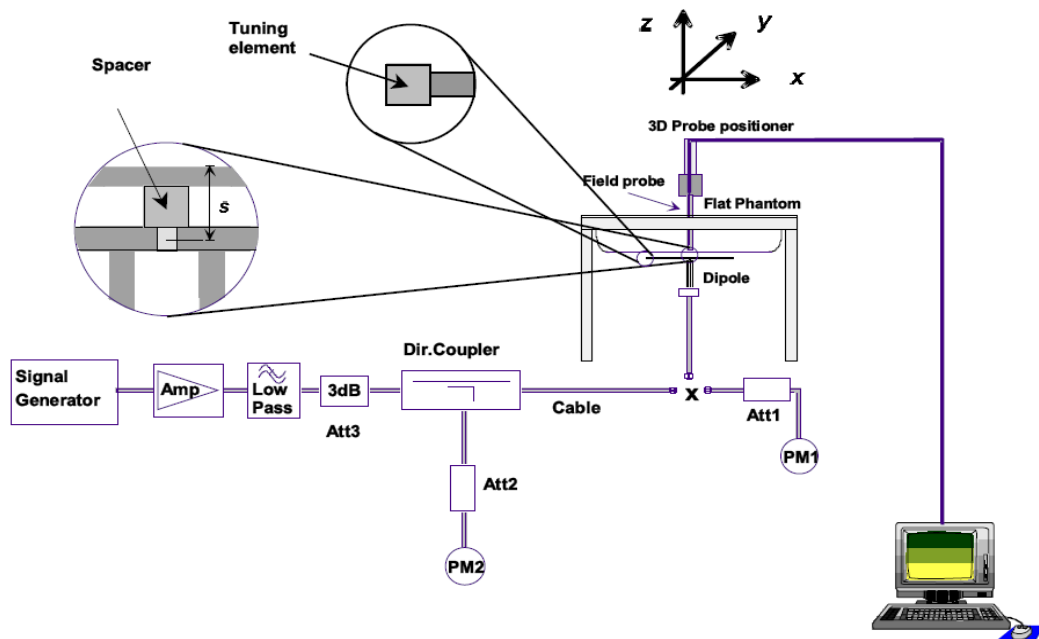
Tissue Type	Measured Frequency (MHz)	Target Tissue		Measured Tissue				Liquid Temp.	Test Data
		ϵ_r	σ	ϵ_r	Dev. ($\pm 5\%$)	σ	Dev. ($\pm 5\%$)		
750H	750	0.89	41.9	0.87	-2.25%	41.87	-0.07%	22.2	2/20/2017
835H	900	0.90	41.5	0.93	3.33%	42.32	1.98%	22.3	2/20/2017
1750H	1750	1.37	40.1	1.39	1.46%	39.84	-0.65%	22.8	2/21/2017
1900H	1900	1.40	40.0	1.35	-3.57%	40.15	0.37%	22.6	2/22/2017
2450H	2450	1.80	39.2	1.76	-2.22%	38.93	-0.69%	22.4	2/23/2017
2600H	2600	1.96	39.0	1.89	-3.57%	38.55	-1.15%	22.3	2/24/2017
750B	750	0.96	55.5	0.94	-2.08%	55.18	-0.58%	22.4	2/25/2017
835B	900	0.97	55.2	0.95	-2.06%	54.78	-0.76%	22.6	2/25/2017
1750B	1750	1.49	53.4	1.46	-2.01%	54.19	1.48%	22.4	2/27/2017
1900B	1900	1.52	53.3	1.55	1.97%	53.32	0.04%	22.6	2/28/2017
2450B	2450	1.95	52.7	1.95	0.00%	50.69	-3.81%	22.7	3/03/2017
2600B	2600	2.16	52.5	2.20	1.85%	51.41	-2.08%	22.5	3/04/2017

6 System Check

The purpose of the system check is to verify that the system operates within its specifications at the device test frequency. The system check is simple check of repeatability to make sure that the system works correctly at the time of the compliance test;

System check results have to be equal or near the values determined during dipole calibration with the relevant liquids and test system ($\pm 10\%$).

System check is performed regularly on all frequency bands where tests are performed with the DASY5 system.



The output power on dipole port must be calibrated to 24 dBm (250mW) before dipole is connected.



Photo of Dipole Setup

System Check in HeadTissue Simulating Liquid

Measurement is made at temperature 22.0 °C and relative humidity 55%.						Measurement Date
Verification results	Frequency (MHz)	Target value (W/kg)	Measured 250mW value (W/kg)	Normalized 1W value (W/kg)	Deviation	
	750	8.02	2.00	7.98	-0.50%	2/20/2017
	835	9.44	2.35	9.39	-0.53%	2/20/2017
	1750	36.90	8.97	35.88	-2.76%	2/21/2017
	1900	40.60	9.89	39.57	-2.54%	2/22/2017
	2450	52.40	13.05	52.18	-0.42%	2/23/2017
	2600	57.90	14.42	57.69	-0.36%	2/24/2017
Note : 1. The graph results see Chapter 7.3. 2. Target Values used derive from the calibration certificate						

System Check in Body Tissue Simulating Liquid

Measurement is made at temperature 22.0 °C and relative humidity 55%.						Measurement Date
Verification results	Frequency (MHz)	Target value (W/kg)	Measured 250mW value (W/kg)	Normalized 1W value (W/kg)	Deviation	
	750	8.46	2.10	8.39	-0.83%	2/25/2017
	835	9.69	2.39	9.57	-1.24%	2/25/2017
	1750	36.70	8.81	35.24	-3.98%	2/27/2017
	1900	40.10	9.97	39.89	-0.52%	2/28/2017
	2450	53.70	13.65	54.58	1.64%	3/03/2017
	2600	56.80	14.17	56.67	-0.23%	3/04/2017
Note : 1. The graph results see Chapter 7.3. 2. Target Values used derive from the calibration certificate						

7 TEST CONDITIONS AND RESULTS

7.1 Conducted Power Results

Max Conducted power measurement results and power drift from tune-up tolerance provide by manufacturer:

Conducted power measurement results (GSM850/1900)

Mode	Txslot	Burst Average Power (dBm)			Tune-up Limit (dBm)	Calculati on (dB)	Frame-Averaged Power (dBm)			Tune-up Limit (dBm)
		128	190	251			128	190	251	
GSM		32.89	32.92	32.78	33	-9.03	23.86	23.89	23.75	23.97
GPRS 850 (GMSK)	1 Txslot	32.70	32.71	32.64	33	-9.03	23.67	23.68	23.61	23.97
	2 Txslot	29.74	29.85	29.71	30	-6.02	23.72	23.83	23.69	23.98
	3 Txslot	27.47	27.50	27.58	28	-4.26	23.21	23.24	23.32	23.74
	4 Txslot	26.41	26.25	26.15	27	-3.01	23.40	23.24	23.14	23.99
EGPRS 850 (GMSK)	1 Txslot	32.69	32.72	32.60	33	-9.03	23.66	23.69	23.57	23.97
	2 Txslot	29.65	29.75	29.66	30	-6.02	23.63	23.73	23.64	23.98
	3 Txslot	27.25	27.48	27.63	28	-4.26	22.99	23.22	23.37	23.74
	4 Txslot	26.11	26.24	26.21	27	-3.01	23.10	23.23	23.20	23.99
Mode	Txslot	Burst Average Power (dBm)			Tune-up Limit (dBm)	Calculati on (dB)	Frame-Averaged Power (dBm)			Tune-up Limit (dBm)
		512	661	810			512	661	810	
GSM		29.71	29.80	29.85	30	-9.03	20.68	20.77	20.82	20.97
GPRS 1900 (GMSK)	1 Txslot	29.66	29.71	29.65	30	-9.03	20.63	20.68	20.62	20.97
	2 Txslot	27.88	27.92	27.85	28	-6.02	21.86	21.90	21.83	21.98
	3 Txslot	25.21	25.62	25.31	26	-4.26	20.95	21.36	21.05	21.74
	4 Txslot	24.22	24.41	24.36	25	-3.01	21.21	21.40	21.35	21.99
EGPRS 1900 (GMSK)	1 Txslot	29.55	29.68	29.64	30	-9.03	20.52	20.65	20.61	20.97
	2 Txslot	27.87	27.90	27.88	28	-6.02	21.85	21.88	21.86	21.98
	3 Txslot	25.24	25.27	25.40	26	-4.26	20.98	21.01	21.14	21.74
	4 Txslot	24.21	24.45	24.33	25	-3.01	21.20	21.44	21.32	21.99

NOTES:

1) Division Factors

To average the power, the division factor is as follows:

1TX-slot = 1 transmit time slot out of 8 time slots=> conducted power divided by (8/1) => -9.03dB

2TX-slots = 2 transmit time slots out of 8 time slots=> conducted power divided by (8/2) => -6.02dB

3TX-slots = 3 transmit time slots out of 8 time slots=> conducted power divided by (8/3) => -4.26dB

4TX-slots = 4 transmit time slots out of 8 time slots=> conducted power divided by (8/4) => -3.01dB

2) According to the conducted power as above, the GPRS/EGPRS measurements are performed with 2Txslots for GPRS/EGPRS 850 and GPRS/EGPRS 1900.

Conducted power measurement results (WCDMA Band II/V)

Item	Band	FDD Band II result (dBm)			Tune-up Limit (dBm)
		Test Channel			
	ARFCN	9262	9400	9538	
AMR	12.2kbps AMR	22.69	22.74	22.72	23
RMC	12.2kbps RMC	22.66	22.78	22.73	23
HSDPA	Sub - Test 1	22.26	22.63	22.45	23
	Sub - Test 2	21.41	21.10	21.53	22
	Sub - Test 3	21.25	21.41	21.32	22
	Sub - Test 4	20.55	20.65	20.78	21
HSUPA	Sub - Test 1	22.54	22.34	22.08	23
	Sub - Test 2	21.24	21.47	21.88	22
	Sub - Test 3	21.55	21.68	21.78	22
	Sub - Test 4	20.36	20.55	20.27	21
	Sub - Test 5	20.41	20.63	20.39	21

Item	Band	FDD Band V result (dBm)			Tune-up Limit (dBm)
		Test Channel			
	ARFCN	4132	4183	4233	
AMR	12.2kbps AMR	22.50	22.65	22.74	23
RMC	12.2kbps RMC	22.80	22.86	22.78	23
HSDPA	Sub - Test 1	22.12	22.74	22.35	23
	Sub - Test 2	21.32	21.36	21.15	22
	Sub - Test 3	21.16	21.19	21.13	22
	Sub - Test 4	21.18	21.17	21.15	21
HSUPA	Sub - Test 1	22.73	22.78	22.77	23
	Sub - Test 2	21.71	21.74	21.72	22
	Sub - Test 3	21.12	21.16	21.13	22
	Sub - Test 4	20.35	20.56	20.14	21
	Sub - Test 5	20.40	20.68	20.56	21

Conducted Power Measurement Results (LTE FDD Band 2)

LTE FDD Band 2				
TX Channel Bandwidth	Frequency (MHz)	RB Size/Offset	Average Power [dBm]	
			QPSK	16QAM
1.4 MHz	1850.7	1 RB low	23.18	22.28
		1 RB high	23.17	22.75
		50% RB mid	23.19	22.90
		100% RB	22.87	21.79
	1880.0	1 RB low	23.18	22.69
		1 RB high	23.03	22.47
		50% RB mid	22.84	21.69
		100% RB	22.75	21.05
	1909.3	1 RB low	23.11	22.50
		1 RB high	23.23	22.05
		50% RB mid	22.85	21.90
		100% RB	22.77	21.37
3 MHz	1851.5	1 RB low	23.15	22.69
		1 RB high	22.57	21.07
		50% RB mid	22.80	21.36
		100% RB	22.88	21.41
	1851.5	1 RB low	22.60	21.90
		1 RB high	22.52	21.80
		50% RB mid	22.58	21.01
		100% RB	23.18	22.74

	1908.5	1 RB low	22.62	21.81
		1 RB high	23.03	22.41
		50% RB mid	22.91	21.24
		100% RB	22.36	21.62
5 MHz	1852.5	1 RB low	22.21	21.59
		1 RB high	22.62	21.01
		50% RB mid	23.18	22.53
		100% RB	23.20	22.52
	1880.0	1 RB low	22.29	21.53
		1 RB high	22.23	21.71
		50% RB mid	22.13	21.23
		100% RB	22.59	21.89
	1907.5	1 RB low	23.19	22.03
		1 RB high	23.18	22.39
		50% RB mid	22.52	21.87
		100% RB	22.46	21.68
10 MHz	1855.0	1 RB low	22.62	21.96
		1 RB high	22.66	21.92
		50% RB mid	22.26	21.59
		100% RB	22.63	21.21
	1880.0	1 RB low	22.95	21.53
		1 RB high	22.45	21.86
		50% RB mid	22.75	21.92
		100% RB	22.22	21.59
	1905.0	1 RB low	23.15	22.62
		1 RB high	22.77	21.13
		50% RB mid	23.16	22.80
		100% RB	22.92	21.46
15 MHz	1857.5	1 RB low	23.18	22.94
		1 RB high	22.99	21.56
		50% RB mid	23.11	22.66
		100% RB	22.02	21.31
	1880.0	1 RB low	22.86	21.31
		1 RB high	22.50	21.85
		50% RB mid	22.80	21.21
		100% RB	22.92	21.18
	1902.5	1 RB low	22.51	21.96
		1 RB high	22.30	21.60
		50% RB mid	22.49	21.03
		100% RB	22.21	21.82
20 MHz	1860.0	1 RB low	23.15	22.04
		1 RB high	23.18	22.87
		50% RB mid	23.50	22.02
		100% RB	22.61	21.97
	1880.0	1 RB low	23.22	22.60
		1 RB high	23.16	22.08
		50% RB mid	23.17	22.19
		100% RB	22.97	21.61
	1900.0	1 RB low	23.21	22.52
		1 RB high	22.94	21.54
		50% RB mid	22.66	21.23
		100% RB	22.64	21.97

Conducted Power Measurement Results (LTE FDD Band 4)

LTE FDD Band 4				
TX Channel Bandwidth	Frequency (MHz)	RB Size/Offset	Average Power [dBm]	
			QPSK	16QAM
1.4 MHz	1710.7	1 RB low	22.41	22.37
		1 RB high	22.68	22.10
		50% RB mid	22.26	22.61
		100% RB	22.59	22.02
	1732.5	1 RB low	22.07	21.26
		1 RB high	22.48	22.30
		50% RB mid	22.67	22.39
		100% RB	22.38	21.73
	1754.3	1 RB low	22.72	21.12
		1 RB high	22.63	22.37
		50% RB mid	22.65	22.28
		100% RB	22.61	22.16
3 MHz	1711.5	1 RB low	22.65	21.23
		1 RB high	22.52	21.83
		50% RB mid	22.72	22.30
		100% RB	22.69	22.82
	1732.5	1 RB low	22.03	21.35
		1 RB high	22.25	22.72
		50% RB mid	22.69	22.25
		100% RB	22.43	22.33
	1753.5	1 RB low	22.40	21.88
		1 RB high	22.33	21.15
		50% RB mid	22.56	21.94
		100% RB	22.45	22.53
5 MHz	1712.5	1 RB low	22.55	22.10
		1 RB high	22.48	22.67
		50% RB mid	22.67	22.04
		100% RB	22.77	21.40
	1732.5	1 RB low	22.22	21.86
		1 RB high	22.68	21.20
		50% RB mid	22.82	21.12
		100% RB	22.18	21.63
	1752.5	1 RB low	22.21	22.51
		1 RB high	22.58	22.14
		50% RB mid	22.76	21.26
		100% RB	22.26	21.59
10 MHz	1715.0	1 RB low	22.48	22.68
		1 RB high	22.32	21.96
		50% RB mid	22.80	22.02
		100% RB	22.08	21.43
	1732.5	1 RB low	22.31	21.66
		1 RB high	22.67	22.00
		50% RB mid	22.45	22.52
		100% RB	22.36	22.57
	1750.0	1 RB low	22.01	22.44
		1 RB high	22.60	21.83
		50% RB mid	22.28	21.53
		100% RB	22.52	20.88
15 MHz	1717.5	1 RB low	22.71	22.08
		1 RB high	22.01	21.35
		50% RB mid	22.84	21.16
		100% RB	22.64	22.15
	1732.5	1 RB low	22.88	22.37
		1 RB high	22.47	21.67

20 MHz	1747.5	50% RB mid	22.68	20.92
		100% RB	22.38	21.86
		1 RB low	22.13	21.50
		1 RB high	22.08	21.29
		50% RB mid	22.40	22.51
		100% RB	22.87	22.21
	1720.0	1 RB low	22.33	21.66
		1 RB high	22.28	22.77
		50% RB mid	22.52	21.99
		100% RB	22.20	22.15
	1732.5	1 RB low	22.23	21.69
		1 RB high	22.73	21.95
		50% RB mid	22.45	21.49
		100% RB	22.58	21.93
	1745.0	1 RB low	22.17	21.51
		1 RB high	22.63	22.03
		50% RB mid	22.81	21.53
		100% RB	22.73	22.31

Conducted Power Measurement Results (LTE FDD Band 7)

LTE FDD Band 7				
TX Channel Bandwidth	Frequency (MHz)	RB Size/Offset	Average Power [dBm]	
			QPSK	16QAM
5 MHz	2502.5	1 RB low	22.36	22.13
		1 RB high	22.26	21.87
		50% RB mid	22.63	21.01
		100% RB	22.18	21.29
	2535	1 RB low	22.65	21.90
		1 RB high	22.33	21.75
		50% RB mid	22.44	22.05
		100% RB	22.52	21.67
	2567.5	1 RB low	22.49	22.21
		1 RB high	22.30	22.34
		50% RB mid	22.55	21.19
		100% RB	22.31	21.20
10 MHz	2505	1 RB low	22.20	21.09
		1 RB high	22.28	22.55
		50% RB mid	22.35	21.53
		100% RB	21.92	21.27
	2535	1 RB low	22.50	21.77
		1 RB high	22.45	21.04
		50% RB mid	22.64	22.14
		100% RB	22.34	22.50
	2565	1 RB low	22.21	22.49
		1 RB high	22.55	21.72
		50% RB mid	22.37	22.28
		100% RB	22.35	21.57
15 MHz	2507.5	1 RB low	22.34	21.75
		1 RB high	22.62	21.02
		50% RB mid	22.44	21.62
		100% RB	22.32	21.55
	2535	1 RB low	22.25	21.20
		1 RB high	22.18	21.99
		50% RB mid	22.11	22.36
		100% RB	22.02	21.39
	2562.5	1 RB low	22.14	22.33
		1 RB high	22.64	21.14

20 MHz	2510	50% RB mid	22.45	22.51
		100% RB	22.39	22.00
		1 RB low	22.58	22.66
		1 RB high	22.39	21.38
		50% RB mid	22.17	21.21
		100% RB	22.07	22.15
	2535	1 RB low	22.58	22.05
		1 RB high	22.31	22.22
		50% RB mid	22.43	22.06
		100% RB	22.16	22.46
	2560	1 RB low	22.12	22.20
		1 RB high	22.28	21.63
		50% RB mid	22.63	21.83
		100% RB	22.31	21.86

Conducted Power Measurement Results (LTE FDD Band 12)

LTE FDD Band 12				
TX Channel Bandwidth	RB Size/Offset	Frequency (MHz)	Average Power [dBm]	
			QPSK	16QAM
1.4 MHz	1 RB low	699.7	22.86	22.25
		707.5	22.74	21.12
		715.3	22.52	21.96
	1 RB high	699.7	22.01	21.48
		707.5	22.68	21.48
		715.3	22.14	21.67
	50% RB mid	699.7	22.02	21.28
		707.5	22.05	21.60
		715.3	22.78	22.81
	100% RB	699.7	22.53	22.01
		707.5	22.35	22.22
		715.3	22.63	22.52
3 MHz	1 RB low	700.5	22.75	21.91
		707.5	22.88	22.38
		714.5	22.31	22.83
	1 RB high	700.5	22.39	22.65
		707.5	22.39	21.98
		714.5	22.61	21.84
	50% RB mid	700.5	22.26	22.86
		707.5	22.69	21.98
		714.5	22.22	22.48
	100% RB	700.5	22.30	22.82
		707.5	22.14	21.75
		714.5	22.41	22.58
5 MHz	1 RB low	701.5	22.21	21.47
		707.5	22.72	22.37
		713.5	22.62	22.67
	1 RB high	701.5	22.16	22.76
		707.5	22.42	21.77
		713.5	22.56	21.84
	50% RB mid	701.5	22.63	21.54
		707.5	22.78	22.79
		713.5	21.99	21.55
	100% RB	701.5	22.59	22.97
		707.5	22.42	21.78
		713.5	22.21	22.70
10 MHz	1 RB low	704.0	22.49	21.89
		707.5	22.01	21.63
		711.0	22.73	22.20

Conducted Power Measurement Results (Bluetooth)

Mode	Channel	Frequency (MHz)	Conducted Peak Output Power	
			(dBm)	(mW)
GFSK	00	2402	5.335	3.416
	39	2441	5.214	3.322
	78	2480	4.941	3.120
$\pi/4$ DQPSK	00	2402	4.598	2.883
	39	2441	4.550	2.851
	78	2480	4.195	2.627
8DPSK	00	2402	4.682	2.939
	39	2441	4.656	2.921
	78	2480	4.327	2.708
BLE (GFSK)	00	2402	-1.314	0.739
	19	2440	-1.193	0.760
	39	2480	-1.732	0.671

Note:

Per KDB 447498 D01, the 1-g and 10-g SAR test exclusion thresholds for 100 MHz to 6 GHz at test separation distances ≤ 50 mm are determined by:

$[(\text{max. power of channel, including tune-up tolerance, mW}) / (\text{min. test separation distance, mm})] \cdot [\sqrt{f(\text{GHz})}] \leq 3$ for 1-g SAR and ≤ 7.5 for 10-g extremity SAR

- $f(\text{GHz})$ is the RF channel transmit frequency in GHz
- Power and distance are rounded to the nearest mW and mm before calculation
- The result is rounded to one decimal place for comparison

Test Frequency (MHz)	Minimum Separation Distance (mm)	Max. Output Power (dBm)	Output Power with tune up (dBm)	Output Power (mW)	calculated value	exclusion thresholds
2402.00	5	5.335	5.5	3.548	1.1	3

Note:

Per KDB 447498 D01, when the minimum test separation distance is < 5 mm, a distance of 5 mm is applied to determine SAR test exclusion. The test exclusion threshold is 1.1 which is ≤ 3 , SAR testing is not required.

7.2 SAR Test Results Summary

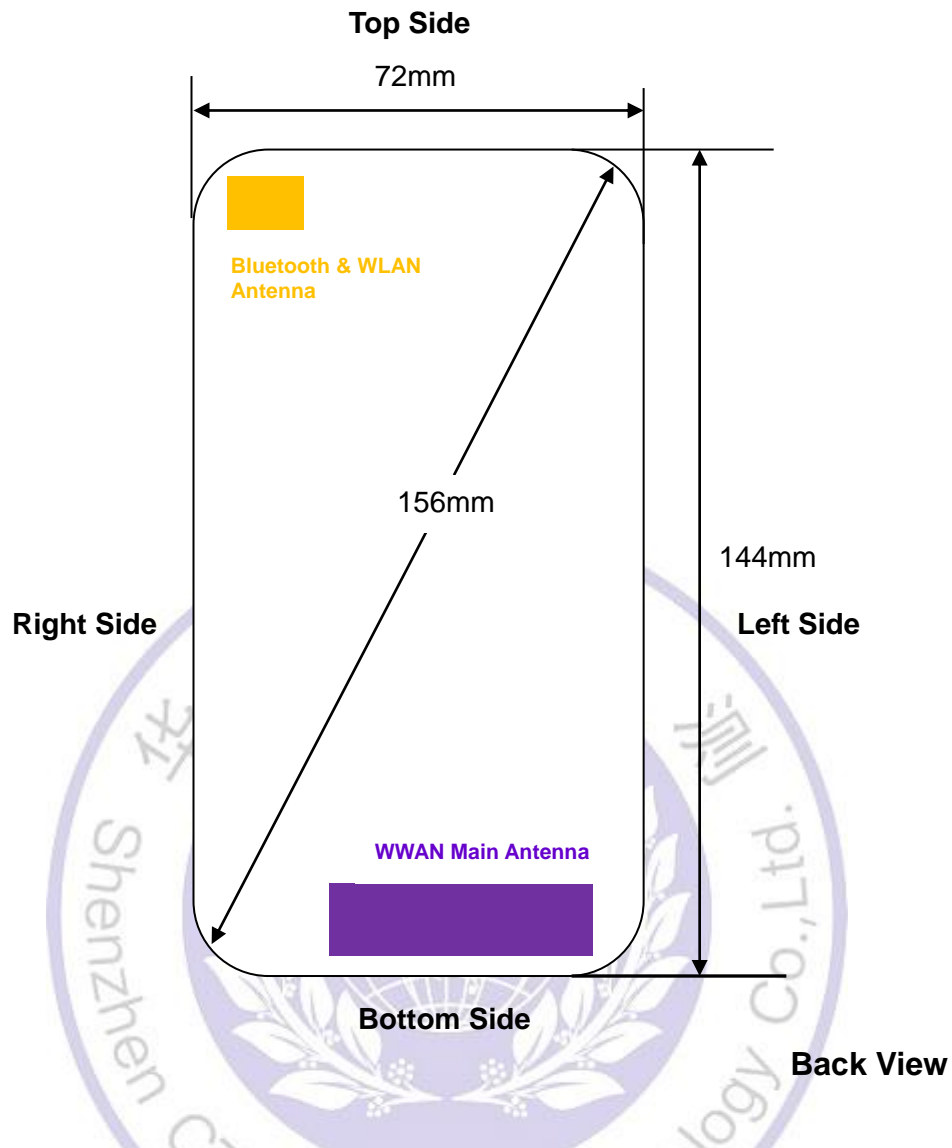
7.2.1 General Remark

1. The DUT is tested using CMW500 communications testers as controller unit to set test channels and maximum output power to the DUT, as well as for measuring the conducted peak power.
2. Test positions as described in the tables above are in accordance with the specified test standard.
3. Tests in body position were performed in that configuration, which generates the highest time based averaged output power (see conducted power results).
4. Tests in head position with GSM were performed in voice mode with 1 timeslot unless GPRS/EGPRS/DTM function allows parallel voice and data traffic on 2 or more timeslots.
5. UMTS was tested in RMC mode with 12.2 kbit/s and TPC bits set to 'all 1'.
6. WiFi was tested in 802.11b/g/n mode with 1 Mbit/s and 6 Mbit/s. According to KDB 248227 the SAR testing for 802.11g/n is not required since When the highest reported SAR for DSSS is adjusted by the ratio of OFDM to DSSS specified maximum output power and the adjusted SAR is ≤ 1.2 W/kg.
7. Required WiFi test channels were selected according to KDB 248227
8. According to FCC KDB pub 248227 D01, Channels with measured maximum output power within $\frac{1}{4}$ dB of each other are considered to have the same maximum output, When there are multiple test channels with the same measured maximum output power, the channel closest to mid-band frequency is selected for SAR measurement and when there are multiple test channels with the same measured maximum output power and equal separation from mid-band frequency; for example, high and low channels or two mid-band channels, the higher frequency (number) channel is selected for SAR measurement.
9. According to FCC KDB pub 941225 D06 this device has been tested with 10 mm distance to the phantom for operation in WiFi hot spot mode.
10. Per FCC KDB pub 941225 D06 the edges with antennas within 2.5 cm are required to be evaluated for SAR to cover WiFi hot spot function.
11. According to IEEE 1528 the SAR test shall be performed at middle channel. Testing of top and bottom channel is optional.
12. According to KDB 447498 D01 testing of other required channels within the operating mode of a frequency band is not required when the reported 1-g or 10-g SAR for the mid-band or highest output power channel is:
 - ≤ 0.8 W/kg or 2.0 W/kg, for 1-g or 10-g respectively, when the transmission band is ≤ 100 MHz
 - ≤ 0.6 W/kg or 1.5 W/kg, for 1-g or 10-g respectively, when the transmission band is between 100 MHz and 200 MHz
 - ≤ 0.4 W/kg or 1.0 W/kg, for 1-g or 10-g respectively, when the transmission band is ≥ 200 MHz
13. IEEE 1528-2003 require the middle channel to be tested first. This generally applies to wireless devices that are designed to operate in technologies with tight tolerances for maximum output power variations across channels in the band. When the maximum output power variation across the required test channels is $> \frac{1}{2}$ dB, instead of the middle channel, the highest output power channel must be used.
14. Per KDB648474 D04 require when the reported SAR for a body-worn accessory, measured without a headset connected to the handset, is < 1.2 W/kg.

15. Per KDB648474 D04 require when the separation distance required for body-worn accessory testing is larger than or equal to that tested for hotspot mode, using the same wireless mode test configuration for voice and data, such as UMTS, LTE and Wi-Fi, and for the same surface of the phone, the hotspot mode SAR data may be used to support body-worn accessory SAR compliance for that particular configuration (surface)
16. 10-g extremity SAR is required only for the surfaces and edges with hotspot mode 1-g SAR > 1.2 W/kg.
17. Per KDB648474 D04 require for phablet SAR test considerations , For smart phones with a display diagonal dimension > 15.0 cm or an overall diagonal dimension > 16.0 cm, When hotspot mode applies, 10-g extremity SAR is required only for the surfaces and edges with hotspot mode 1-g reported SAR > 1.2 W/kg.
18. 10-g extremity SAR is required only for the surfaces and edges with hotspot mode 1-g SAR > 1.2 W/kg.
19. Maximum Scaling SAR in order to calculate the Maximum SAR values to test under the standard Peak Power, Calculation method is as follows:
Maximum Scaling SAR = tested SAR (Max.) × [maximum turn-up power (mw)/ maximum measurement output power(mw)]



7.2.2 Transmit Antennas and SAR Measurement Position



Distance of The Antenna to the EUT surface and edge						
Antennas	Front	Back	Top Side	Bottom Side	Left Side	Right Side
BT&WLAN	/	/	/	>25mm	>25mm	/
WWAN	/	/	>25mm	/	/	/

Positions for SAR tests; Hotspot mode						
Antennas	Front	Back	Top Side	Bottom Side	Left Side	Right Side
BT&WLAN	Yes	Yes	Yes	No	No	Yes
WWAN	Yes	Yes	No	Yes	Yes	Yes

General Note: Referring to KDB 941225 D06 v02, SAR must be measured for all sides and surfaces with a transmitting antenna located with 25mm from that surface or edge.

7.2.3 Standalone SAR

SAR Values GSM 850

Test Position	Channel/ Frequency(MHz)	Test Mode	Duty Cycle	Maximum Allowed Power (dBm)	Conducted Power (dBm)	Drift ± 0.21 dB	Limit SAR _{1g} 1.6 W/kg			
						Drift (dB)	Measured SAR _{1g} (W/kg)	Scaling Factor	Reported SAR _{1g} (W/kg)	Graph Results
Test Position of Head										
Left/Cheek	190/836.6	Voice	1:1	33.00	32.92	-0.05	0.129	1.02	0.131	Figure 1
Left/Tilt	190/836.6	Voice	1:1	33.00	32.92	-0.04	0.074	1.02	0.075	N/A
Right/Cheek	190/836.6	Voice	1:1	33.00	32.92	-0.06	0.115	1.02	0.117	N/A
Right/Tilt	190/836.6	Voice	1:1	33.00	32.92	0.03	0.068	1.02	0.069	N/A
Test position of Body-worn accessory(Distance 10mm)										
Rear Side	190/836.6	2Txslots	1:4.15	23.98	23.83	-0.04	0.635	1.04	0.657	Figure.10
Front Side	190/836.6	2Txslots	1:4.15	23.98	23.83	0.05	0.511	1.04	0.529	N/A
Test position of Hotspot Mode (Distance 10mm)										
Rear Side	190/836.6	2Txslots	1:4.15	23.98	23.83	-0.04	0.635	1.04	0.657	N/A
Front Side	190/836.6	2Txslots	1:4.15	23.98	23.83	0.05	0.511	1.04	0.529	N/A
Left Edge	190/836.6	2Txslots	1:4.15	23.98	23.83	0.06	0.201	1.04	0.208	N/A
Right Edge	190/836.6	2Txslots	1:4.15	23.98	23.83	0.07	0.411	1.04	0.425	N/A
Top Edge	N/A	N/A	N/A	N/A	N/A	N/A	N/A	N/A	N/A	N/A
Bottom Edge	190/836.6	2Txslots	1:4.15	23.98	23.83	-0.02	0.524	1.04	0.542	N/A
Worst Case Position of Body with EGPRS(Distance 10mm)										
Rear Side	190/836.6	2Txslots	1:4.15	23.98	23.73	-0.07	0.594	1.06	0.629	N/A
Note: 1.The value with green color is the maximum SAR Value of each test band. 2. Per FCC KDB Publication 447498 D01, if the reported (scaled) SAR measured at the middle channel or highest output power channel for each test configuration is ≤ 0.8 W/kg then testing at the other channels is optional for such test configuration(s). 3. When multiple slots are used, SAR should be tested to account for the maximum source-based time-averaged output power. 4. Per FCC KDB Publication 648474 D04, SAR was evaluated without a headset connected to the device. Since the reported SAR was ≤ 1.2 W/kg, no additional SAR evaluations using a headset cable were required. 5. When the maximum output power and tune-up tolerance specified for production units in a secondary mode is $\leq \frac{1}{4}$ dB higher than the primary mode or when the highest reported SAR of the primary mode is scaled by the ratio of specified maximum output power and tune-up tolerance of secondary to primary mode and the adjusted SAR is ≤ 1.2 W/kg, SAR measurement is not required for the secondary mode										

SAR Values [GSM 1900]

Test Position	Channel/ Frequency(MHz)	Test Mode	Duty Cycle	Maximum Allowed Power (dBm)	Conducted Power (dBm)	Drift ± 0.21 dB	Limit SAR _{1g} 1.6 W/kg			
						Drift (dB)	Measured SAR _{1g} (W/kg)	Scaling Factor	Reported SAR _{1g} (W/kg)	Graph Results
Test Position of Head										
Left/Cheek	661/1880	Voice	1:1	30.00	29.80	-0.04	0.051	1.05	0.053	N/A
Left/Tilt	661/1880	Voice	1:1	30.00	29.80	-0.03	0.033	1.05	0.035	N/A
Right/Cheek	661/1880	Voice	1:1	30.00	29.80	0.05	0.053	1.05	0.055	Figure 2
Right/Tilt	661/1880	Voice	1:1	30.00	29.80	0.05	0.029	1.05	0.030	N/A
Test position of Body-worn accessory(Distance 10mm)										
Rear Side	661/1880	2Txslots	1:4.15	21.98	21.90	-0.07	0.687	1.02	0.700	Figure.11
Front Side	661/1880	2Txslots	1:4.15	21.98	21.90	0.05	0.450	1.02	0.458	N/A
Test position of Hotspot Mode (Distance 10mm)										
Rear Side	661/1880	2Txslots	1:4.15	21.98	21.90	-0.07	0.687	1.02	0.700	N/A
Front Side	661/1880	2Txslots	1:4.15	21.98	21.90	0.05	0.450	1.02	0.458	N/A
Left Edge	661/1880	2Txslots	1:4.15	21.98	21.90	0.08	0.458	1.02	0.467	N/A
Right Edge	661/1880	2Txslots	1:4.15	21.98	21.90	0.04	0.245	1.02	0.250	N/A
Top Edge	N/A	N/A	N/A	N/A	N/A	N/A	N/A	N/A	N/A	N/A
Bottom Edge	661/1880	2Txslots	1:4.15	21.98	21.90	-0.02	0.517	1.02	0.527	N/A
Worst Case Position of Body with EGPRS(Distance 10mm)										
Rear Side	661/1880	2Txslots	1:4.15	21.98	21.88	-0.05	0.667	1.02	0.683	N/A
Note: 1.The value with green color is the maximum SAR Value of each test band. 2. Per FCC KDB Publication 447498 D01, if the reported (scaled) SAR measured at the middle channel or highest output power channel for each test configuration is ≤ 0.8 W/kg then testing at the other channels is optional for such test configuration(s). 3. When multiple slots are used, SAR should be tested to account for the maximum source-based time-averaged output power. 4. Per FCC KDB Publication 648474 D04, SAR was evaluated without a headset connected to the device. Since the reported SAR was ≤ 1.2 W/kg, no additional SAR evaluations using a headset cable were required. 5. When the maximum output power and tune-up tolerance specified for production units in a secondary mode is $\leq \frac{1}{4}$ dB higher than the primary mode or when the highest reported SAR of the primary mode is scaled by the ratio of specified maximum output power and tune-up tolerance of secondary to primary mode and the adjusted SAR is ≤ 1.2 W/kg, SAR measurement is not required for the secondary mode										

SAR Values [WCDMA Band V]

Test Position	Channel/ Frequency (MHz)	Test Mode	Duty Cycle	Maximum Allowed Power (dBm)	Conducted Power (dBm)	Drift $\pm 0.21\text{dB}$	Limit SAR _{1g} 1.6 W/kg			
						Drift (dB)	Measured SAR _{1g} (W/kg)	Scaling Factor	Reported SAR _{1g} (W/kg)	Graph Results
Test Position of Head										
Left/Cheek	4183/836.6	RMC 12.2K	1:1	23.00	22.86	-0.06	0.089	1.03	0.092	N/A
Left/Tilt	4183/836.6	RMC 12.2K	1:1	23.00	22.86	-0.03	0.060	1.03	0.062	N/A
Right/Cheek	4183/836.6	RMC 12.2K	1:1	23.00	22.86	-0.05	0.095	1.03	0.098	Figure 3
Right/Tilt	4183/836.6	RMC 12.2K	1:1	23.00	22.86	0.05	0.062	1.03	0.064	N/A
Test position of Body-worn accessory(Distance 10mm)										
Rear Side	4183/836.6	RMC 12.2K	1:1	23.00	22.86	0.05	0.237	1.03	0.245	Figure.12
Front Side	4183/836.6	RMC 12.2K	1:1	23.00	22.86	-0.05	0.114	1.03	0.118	N/A
Test position of Hotspot Mode (Distance 10mm)										
Rear Side	4183/836.6	RMC 12.2K	1:1	23.00	22.86	0.05	0.237	1.03	0.245	N/A
Front Side	4183/836.6	RMC 12.2K	1:1	23.00	22.86	-0.05	0.114	1.03	0.118	N/A
Left Edge	4183/836.6	RMC 12.2K	1:1	23.00	22.86	0.11	0.194	1.03	0.200	N/A
Right Edge	4183/836.6	RMC 12.2K	1:1	23.00	22.86	0.05	0.098	1.03	0.101	N/A
Top Edge	N/A	N/A	N/A	N/A	N/A	N/A	N/A	N/A	N/A	N/A
Bottom Edge	4183/836.6	RMC 12.2K	1:1	23.00	22.86	-0.07	0.211	1.03	0.218	N/A

Note: 1.The value with green color is the maximum SAR Value of each test band.
2. Per FCC KDB Publication 447498 D01, if the reported (scaled) SAR measured at the middle channel or highest output power channel for each test configuration is ≤ 0.8 W/kg then testing at the other channels is optional for such test configuration(s).
3. When multiple slots are used, SAR should be tested to account for the maximum source-based time-averaged output power.
4. Per FCC KDB Publication 648474 D04, SAR was evaluated without a headset connected to the device. Since the reported SAR was ≤ 1.2 W/kg, no additional SAR evaluations using a headset cable were required.
5. When the maximum output power and tune-up tolerance specified for production units in a secondary mode is $\leq \frac{1}{4}$ dB higher than the primary mode or when the highest reported SAR of the primary mode is scaled by the ratio of specified maximum output power and tune-up tolerance of secondary to primary mode and the adjusted SAR is ≤ 1.2 W/kg, SAR measurement is not required for the secondary mode

SAR Values [WCDMA Band II]

Test Position	Channel/ Frequency (MHz)	Test Mode	Duty Cycle	Maximum Allowed Power (dBm)	Conducted Power (dBm)	Drift $\pm 0.21\text{dB}$	Limit SAR _{1g} 1.6 W/kg			
						Drift (dB)	Measured SAR _{1g} (W/kg)	Scaling Factor	Reported SAR _{1g} (W/kg)	Graph Results
Test Position of Head										
Left/Cheek	9400/1880	RMC 12.2K	1:1	23.00	22.78	-0.06	0.059	1.05	0.062	N/A
Left/Tilt	9400/1880	RMC 12.2K	1:1	23.00	22.78	-0.05	0.032	1.05	0.034	N/A
Right/Cheek	9400/1880	RMC 12.2K	1:1	23.00	22.78	-0.11	0.061	1.05	0.064	Figure 4
Right/Tilt	9400/1880	RMC 12.2K	1:1	23.00	22.78	0.03	0.037	1.05	0.039	N/A
Test position of Body-worn accessory(Distance 10mm)										
Rear Side	9400/1880	RMC 12.2K	1:1	23.00	22.78	-0.10	0.703	1.05	0.740	Figure.13
Front Side	9400/1880	RMC 12.2K	1:1	23.00	22.78	0.08	0.585	1.05	0.615	N/A
Test position of Hotspot Mode (Distance 10mm)										
Rear Side	9400/1880	RMC 12.2K	1:1	23.00	22.78	-0.10	0.703	1.05	0.740	N/A
Front Side	9400/1880	RMC 12.2K	1:1	23.00	22.78	0.08	0.585	1.05	0.615	N/A
Left Edge	9400/1880	RMC 12.2K	1:1	23.00	22.78	0.05	0.554	1.05	0.583	N/A
Right Edge	9400/1880	RMC 12.2K	1:1	23.00	22.78	0.05	0.365	1.05	0.384	N/A
Top Edge	N/A	N/A	N/A	N/A	N/A	N/A		1.05		N/A
Bottom Edge	9400/1880	RMC 12.2K	1:1	23.00	22.78	-0.08	0.578	1.05	0.608	N/A

Note: 1. The value with green color is the maximum SAR Value of each test band.
2. Per FCC KDB Publication 447498 D01, if the reported (scaled) SAR measured at the middle channel or highest output power channel for each test configuration is ≤ 0.8 W/kg then testing at the other channels is optional for such test configuration(s).
3. When multiple slots are used, SAR should be tested to account for the maximum source-based time-averaged output power.
4. Per FCC KDB Publication 648474 D04, SAR was evaluated without a headset connected to the device. Since the reported SAR was ≤ 1.2 W/kg, no additional SAR evaluations using a headset cable were required.
5. When the maximum output power and tune-up tolerance specified for production units in a secondary mode is $\leq \frac{1}{4}$ dB higher than the primary mode or when the highest reported SAR of the primary mode is scaled by the ratio of specified maximum output power and tune-up tolerance of secondary to primary mode and the adjusted SAR is ≤ 1.2 W/kg, SAR measurement is not required for the secondary mode.

SAR Values [LTE Band II]

Test Position	Channel/ Frequency (MHz)	Test Mode	Duty Cycle	Maximum Allowed Power (dBm)	Conducted Power (dBm)	Drift $\pm 0.21\text{dB}$	Limit SAR _{1g} 1.6 W/kg			
						Drift (dB)	Measured SAR _{1g} (W/kg)	Scaling Factor	Reported SAR _{1g} (W/kg)	Graph Results
Test Position of Head										
Left/Cheek	18900/1880	1RB	1:1	24.00	23.22	-0.10	0.041	1.20	0.049	N/A
Left/Tilt	18900/1880	1RB	1:1	24.00	23.22	-0.08	0.025	1.20	0.030	N/A
Right/Cheek	18900/1880	1RB	1:1	24.00	23.22	-0.12	0.044	1.20	0.053	Figure 5
Right/Tilt	18900/1880	1RB	1:1	24.00	23.22	0.05	0.029	1.20	0.035	N/A
Left/Cheek	18700/1860	50%RB	1:1	24.00	23.50	-0.07	0.039	1.12	0.044	N/A
Left/Tilt	18700/1860	50%RB	1:1	24.00	23.50	0.05	0.030	1.12	0.034	N/A
Right/Cheek	18700/1860	50%RB	1:1	24.00	23.50	0.03	0.042	1.12	0.047	N/A
Right/Tilt	18700/1860	50%RB	1:1	24.00	23.50	0.11	0.028	1.12	0.031	N/A
Test position of Body-worn accessory(Distance 10mm)										
Rear Side	18900/1880	1RB	1:1	24.00	23.22	-0.10	0.664	1.20	0.795	Figure.14
Front Side	18900/1880	1RB	1:1	24.00	23.22	-0.08	0.487	1.20	0.583	N/A
Rear Side	18700/1860	50%RB	1:1	24.00	23.50	0.05	0.659	1.12	0.739	N/A
Front Side	18700/1860	50%RB	1:1	24.00	23.50	0.03	0.501	1.12	0.562	N/A
Test position of Hotspot Mode (Distance 10mm)										
Rear Side	18900/1880	1RB	1:1	24.00	23.22	-0.10	0.664	1.20	0.795	N/A
Front Side	18900/1880	1RB	1:1	24.00	23.22	-0.08	0.487	1.20	0.583	N/A
Left Edge	18900/1880	1RB	1:1	24.00	23.22	-0.15	0.514	1.20	0.615	N/A
Right Edge	18900/1880	1RB	1:1	24.00	23.22	0.11	0.326	1.20	0.390	N/A
Top Edge	18900/1880	1RB	N/A	N/A	N/A	N/A	N/A	N/A	N/A	N/A
Bottom Edge	18900/1880	1RB	1:1	24.00	23.22	-0.08	0.557	1.20	0.667	N/A
Rear Side	18700/1860	50%RB	1:1	24.00	23.50	0.05	0.659	1.12	0.739	N/A
Front Side	18700/1860	50%RB	1:1	24.00	23.50	0.03	0.501	1.12	0.562	N/A
Left Edge	18700/1860	50%RB	1:1	24.00	23.50	0.05	0.522	1.12	0.586	N/A
Right Edge	18700/1860	50%RB	1:1	24.00	23.50	0.08	0.336	1.12	0.377	N/A
Top Edge	18700/1860	50%RB	N/A	N/A	N/A	N/A	N/A	N/A	N/A	N/A
Bottom Edge	18700/1860	50%RB	1:1	24.00	23.50	-0.04	0.558	1.12	0.626	N/A
Note: 1.The value with green color is the maximum SAR Value of each test band. 2. Per FCC KDB Publication 447498 D01, if the reported (scaled) SAR measured at the middle channel or highest output power channel for each test configuration is ≤ 0.8 W/kg then testing at the other channels is optional for such test configuration(s). 3. When multiple slots are used, SAR should be tested to account for the maximum source-based time-averaged output power. 4. Per FCC KDB Publication 648474 D04, SAR was evaluated without a headset connected to the device. Since the reported SAR was ≤ 1.2 W/kg, no additional SAR evaluations using a headset cable were required. 5. When the maximum output power and tune-up tolerance specified for production units in a secondary mode is $\leq \frac{1}{4}$ dB higher than the primary mode or when the highest reported SAR of the primary mode is scaled by the ratio of specified maximum output power and tune-up tolerance of secondary to primary mode and the adjusted SAR is ≤ 1.2 W/kg, SAR measurement is not required for the secondary mode										

SAR Values [LTE Band VII]

Test Position	Channel/ Frequency (MHz)	Test Mode	Duty Cycle	Maximum Allowed Power (dBm)	Conducted Power (dBm)	Drift $\pm 0.21\text{dB}$	Limit SAR _{1g} 1.6 W/kg			
						Drift (dB)	Measured SAR _{1g} (W/kg)	Scaling Factor	Reported SAR _{1g} (W/kg)	Graph Results
Test Position of Head										
Left/Cheek	20850/2510	1RB	1:1	24.00	22.58	-0.08	0.024	1.39	0.033	N/A
Left/Tilt	20850/2510	1RB	1:1	24.00	22.58	-0.02	0.011	1.39	0.015	N/A
Right/Cheek	20850/2510	1RB	1:1	24.00	22.58	-0.07	0.028	1.39	0.039	Figure 7
Right/Tilt	20850/2510	1RB	1:1	24.00	22.58	0.11	0.015	1.39	0.021	N/A
Left/Cheek	21350/2560	50%RB	1:1	24.00	22.63	0.08	0.026	1.37	0.036	N/A
Left/Tilt	21350/2560	50%RB	1:1	24.00	22.63	-0.01	0.015	1.37	0.021	N/A
Right/Cheek	21350/2560	50%RB	1:1	24.00	22.63	-0.16	0.025	1.37	0.034	N/A
Right/Tilt	21350/2560	50%RB	1:1	24.00	22.63	-0.36	0.019	1.37	0.026	N/A
Test position of Body-worn accessory(Distance 10mm)										
Rear Side	20850/2510	1RB	1:1	24.00	22.58	-0.10	0.224	1.39	0.311	Figure.16
Front Side	20850/2510	1RB	1:1	24.00	22.58	-0.15	0.187	1.39	0.259	N/A
Rear Side	21350/2560	50%RB	1:1	24.00	22.63	0.04	0.211	1.37	0.289	N/A
Front Side	21350/2560	50%RB	1:1	24.00	22.63	0.08	0.191	1.37	0.262	N/A
Test position of Hotspot Mode (Distance 10mm)										
Rear Side	20850/2510	1RB	1:1	24.00	22.58	-0.10	0.224	1.39	0.311	N/A
Front Side	20850/2510	1RB	1:1	24.00	22.58	-0.15	0.187	1.39	0.259	N/A
Left Edge	20850/2510	1RB	1:1	24.00	22.58	-0.05	0.202	1.39	0.280	N/A
Right Edge	20850/2510	1RB	1:1	24.00	22.58	-0.10	0.112	1.39	0.155	N/A
Top Edge	20850/2510	1RB	N/A	N/A	N/A	N/A	N/A	N/A	N/A	N/A
Bottom Edge	20850/2510	1RB	1:1	24.00	22.58	-0.11	0.189	1.39	0.262	N/A
Rear Side	21350/2560	50%RB	1:1	24.00	22.63	0.04	0.211	1.37	0.289	N/A
Front Side	21350/2560	50%RB	1:1	24.00	22.63	0.08	0.191	1.37	0.262	N/A
Left Edge	21350/2560	50%RB	1:1	24.00	22.63	0.03	0.199	1.37	0.273	N/A
Right Edge	21350/2560	50%RB	1:1	24.00	22.63	0.05	0.108	1.37	0.148	N/A
Top Edge	21350/2560	50%RB	N/A	N/A	N/A	N/A	N/A	N/A	N/A	N/A
Bottom Edge	21350/2560	50%RB	1:1	24.00	22.63	-0.04	0.195	1.37	0.267	N/A

Note: 1.The value with green color is the maximum SAR Value of each test band.
2. Per FCC KDB Publication 447498 D01, if the reported (scaled) SAR measured at the middle channel or highest output power channel for each test configuration is ≤ 0.8 W/kg then testing at the other channels is optional for such test configuration(s).
3. When multiple slots are used, SAR should be tested to account for the maximum source-based time-averaged output power.
4. Per FCC KDB Publication 648474 D04, SAR was evaluated without a headset connected to the device. Since the reported SAR was ≤ 1.2 W/kg, no additional SAR evaluations using a headset cable were required.
5. When the maximum output power and tune-up tolerance specified for production units in a secondary mode is $\leq \frac{1}{4}$ dB higher than the primary mode or when the highest reported SAR of the primary mode is scaled by the ratio of specified maximum output power and tune-up tolerance of secondary to primary mode and the adjusted SAR is ≤ 1.2 W/kg, SAR measurement is not required for the secondary mode

SAR Values [LTE Band XII]

Test Position	Channel/ Frequency (MHz)	Test Mode	Duty Cycle	Maximum Allowed Power (dBm)	Conducted Power (dBm)	Drift ± 0.21dB	Limit SAR _{1g} 1.6 W/kg			
						Drift (dB)	Measured SAR _{1g} (W/kg)	Scaling Factor	Reported SAR _{1g} (W/kg)	Graph Results
Test Position of Head										
Left/Cheek	23780/707.5	1RB	1:1	24.00	22.91	-0.11	0.311	1.29	0.400	N/A
Left/Tilt	23780/707.5	1RB	1:1	24.00	22.91	-0.05	0.198	1.29	0.254	N/A
Right/Cheek	23780/707.5	1RB	1:1	24.00	22.91	-0.07	0.318	1.29	0.409	Figure 8
Right/Tilt	23780/707.5	1RB	1:1	24.00	22.91	0.07	0.187	1.29	0.240	N/A
Left/Cheek	23800/711	50%RB	1:1	24.00	22.87	-0.05	0.309	1.30	0.401	N/A
Left/Tilt	23800/711	50%RB	1:1	24.00	22.87	0.05	0.174	1.30	0.226	N/A
Right/Cheek	23800/711	50%RB	1:1	24.00	22.87	0.03	0.311	1.30	0.403	N/A
Right/Tilt	23800/711	50%RB	1:1	24.00	22.87	-0.02	0.179	1.30	0.232	N/A
Test position of Body-worn accessory(Distance 10mm)										
Rear Side	23780/707.5	1RB	1:1	24.00	22.91	-0.10	0.594	1.29	0.763	Figure.17
Front Side	23780/707.5	1RB	1:1	24.00	22.91	-0.09	0.378	1.29	0.486	N/A
Rear Side	23800/711	50%RB	1:1	24.00	22.87	0.05	0.565	1.30	0.733	N/A
Front Side	23800/711	50%RB	1:1	24.00	22.87	0.07	0.341	1.30	0.442	N/A
Test position of Hotspot Mode (Distance 10mm)										
Rear Side	23780/707.5	1RB	1:1	24.00	22.91	-0.10	0.594	1.29	0.763	N/A
Front Side	23780/707.5	1RB	1:1	24.00	22.91	-0.09	0.378	1.29	0.486	N/A
Left Edge	23780/707.5	1RB	1:1	24.00	22.91	-0.01	0.445	1.29	0.572	N/A
Right Edge	23780/707.5	1RB	1:1	24.00	22.91	-0.15	0.269	1.29	0.346	N/A
Top Edge	23780/707.5	1RB	N/A	N/A	N/A	N/A	N/A	N/A	N/A	N/A
Bottom Edge	23780/707.5	1RB	1:1	24.00	22.91	0.08	0.502	1.29	0.645	N/A
Rear Side	23800/711	50%RB	1:1	24.00	22.87	0.05	0.565	1.30	0.733	N/A
Front Side	23800/711	50%RB	1:1	24.00	22.87	0.07	0.341	1.30	0.442	N/A
Left Edge	23800/711	50%RB	1:1	24.00	22.87	-0.05	0.451	1.30	0.585	N/A
Right Edge	23800/711	50%RB	1:1	24.00	22.87	0.06	0.268	1.30	0.348	N/A
Top Edge	23800/711	50%RB	N/A	N/A	N/A	N/A	N/A	N/A	N/A	N/A
Bottom Edge	23800/711	50%RB	1:1	24.00	22.87	-0.04	0.510	1.30	0.662	N/A

Note: 1. The value with green color is the maximum SAR Value of each test band.

- Per FCC KDB Publication 447498 D01, if the reported (scaled) SAR measured at the middle channel or highest output power channel for each test configuration is ≤ 0.8 W/kg then testing at the other channels is optional for such test configuration(s).
- When multiple slots are used, SAR should be tested to account for the maximum source-based time-averaged output power.
- Per FCC KDB Publication 648474 D04, SAR was evaluated without a headset connected to the device. Since the reported SAR was ≤ 1.2 W/kg, no additional SAR evaluations using a headset cable were required.
- When the maximum output power and tune-up tolerance specified for production units in a secondary mode is $\leq \frac{1}{4}$ dB higher than the primary mode or when the highest reported SAR of the primary mode is scaled by the ratio of specified maximum output power and tune-up tolerance of secondary to primary mode and the adjusted SAR is ≤ 1.2 W/kg, SAR measurement is not required for the secondary mode

SAR Values [WIFI2.4G]

Test Position	Channel/ Frequency (MHz)	Service	Duty Cycle	Maximum Allowed Power (dBm)	Conducted Power (dBm)	Drift ± 0.21dB	Limit SAR _{1g} 1.6 W/kg			
						Drift (dB)	Measured SAR _{1g} (W/kg)	Scaling Factor	Reported SAR _{1g} (W/kg)	Graph Results
Test Position of Head										
Left/Cheek	6/2437	DSSS	1:1	17.00	16.74	-0.07	0.467	1.06	0.496	Figure 9
Left/Tilt	6/2437	DSSS	1:1	17.00	16.74	-0.04	0.447	1.06	0.475	N/A
Right/Cheek	6/2437	DSSS	1:1	17.00	16.74	-0.11	0.458	1.06	0.486	N/A
Right/Tilt	6/2437	DSSS	1:1	17.00	16.74	0.05	0.442	1.06	0.469	N/A
Test position of Body-worn accessory(Distance 10mm)										
Rear Side	6/2437	DSSS	1:1	17.00	16.74	-0.03	0.037	1.06	0.039	Figure.18
Front Side	6/2437	DSSS	1:1	17.00	16.74	0.06	0.015	1.06	0.016	N/A
Test position of Hotspot Mode (Distance 10mm)										
Rear Side	6/2437	DSSS	1:1	17.00	16.74	-0.03	0.037	1.06	0.039	N/A
Front Side	6/2437	DSSS	1:1	17.00	16.74	0.06	0.015	1.06	0.016	N/A
Left Edge	6/2437	DSSS	N/A	N/A	N/A	N/A	N/A	N/A	N/A	N/A
Right Edge	6/2437	DSSS	1:1	17.00	16.74	-0.05	0.024	1.06	0.025	N/A
Top Edge	6/2437	DSSS	1:1	17.00	16.74	0.05	0.031	1.06	0.033	N/A
Bottom Edge	6/2437	DSSS	N/A	N/A	N/A	N/A	N/A	N/A	N/A	N/A
Note: 1. The value with green color is the maximum SAR Value of each test band. 2. Per FCC KDB Publication 447498 D01, if the reported (scaled) SAR measured at the middle channel or highest output power channel for each test configuration is ≤ 0.8 W/kg then testing at the other channels is optional for such test configuration(s). 3. Per KDB 248227-SAR is measured using the highest measured maximum output power channel for the initial test configuration. 4. Per KDB 248227- Channels with measured maximum output power within ¼ dB of each other are considered to have the same maximum output. When there are multiple test channels with the same measured maximum output power, the channel closest to mid-band frequency is selected for SAR measurement. And when there are multiple test channels with the same measured maximum output power and equal separation from mid-band frequency; for example, high and low channels or two mid-band channels, the higher frequency (number) channel is selected for SAR measurement. 5. Per KDB 248227- When the highest reported SAR for DSSS is adjusted by the ratio of OFDM to DSSS specified maximum output power and the adjusted SAR is ≤ 1.2 W/kg the OFDM SAR test is not required.										

Remark: The highest reported SAR for DSSS is adjusted by the ratio of OFDM to DSSS specified maximum output power was 0.343 W/Kg(0.486*(12/17)=0.343) So OFDM SAR test is not required.

7.2.4 Simultaneous SAR Evaluation

Application Simultaneous Transmission information:

Air-Interface	Band (MHz)	Type	Simultaneous Transmissions	Voice over Digital Transport(Data)
GSM	850	VO	Yes,WLAN or BT/BLE	N/A
	1900	VO		
	GPRS/EDGE	DT	Yes,WLAN or BT/BLE	N/A
WCDMA	Band II/Band IV/BandV	DT	Yes,WLAN or BT/BLE	N/A
LTE	Band2/Band4/Band7/ Band12	DT	Yes,WLAN or BT/BLE	N/A
WLAN	2450	DT	Yes,GSM,GPRS,EDGE,UMTS	Yes
BT/BLE	2450	DT	Yes,GSM,GPRS,EDGE,UMTS	N/A

Note:VO-Voice Service only;DT-Digital Transport

NOTE:

- 1) WLAN2.4GHz and Bluetooth share the same antenna, and cannot transmit simultaneously.
- 2) The Reported SAR summation is calculated based on the same configuration and test position.
- 3) Per KDB 447498 D01, simultaneous transmission SAR is compliant if,
 - a) Scalar SAR summation $< 1.6\text{W/kg}$.
 - b) $\text{SPLSR} = (\text{SAR1} + \text{SAR2})^{1.5} / (\text{min. separation distance, mm})$, and the peak separation distance is determined from the square root of $[(x_1-x_2)^2 + (y_1-y_2)^2 + (z_1-z_2)^2]$, where (x_1, y_1, z_1) and (x_2, y_2, z_2) are the coordinates of the extrapolated peak SAR locations in the zoom scan
 - c) If $\text{SPLSR} \leq 0.04$, simultaneously transmission SAR measurement is not necessary
 - d) Simultaneously transmission SAR measurement, and the reported multi-band SAR $< 1.6\text{W/kg}$
- 4) For simultaneous transmission analysis, Bluetooth SAR is estimated per KDB 447498 D01v05r02 based on the formula below.
 - a) $(\text{max. power of channel, including tune-up tolerance, mW}) / (\text{min. test separation distance, mm}) \cdot [\sqrt{f(\text{GHz})} / x] \text{ W/kg}$ for test separation distances $\leq 50 \text{ mm}$; where $x = 7.5$ for 1-g SAR, and $x = 18.75$ for 10-g SAR.
 - b) When the minimum separation distance is $< 5\text{mm}$, the distance is used 5mm to determine SAR test exclusion.
 - c) 0.4 W/kg for 1-g SAR and 1.0 W/kg for 10-g SAR, when the test separation distances is $> 50 \text{ mm}$.

Estimated stand alone SAR					
Communication system	Frequency (MHz)	Configuration	Maximum Power (including tune-up tolerance) (dBm)	Separation Distance (mm)	Estimated SAR _{1-g} (W/kg)
Bluetooth*	2402	Head	5.5	5	0.147
Bluetooth*	2402	Hotspot	5.5	10	0.073
Bluetooth*	2402	Body Worn	5.5	10	0.073

Simultaneous transmission SAR for WIFI and GSM/WCDMA/ LTE

SAR _{1g} (W/kg) Test Position	GSM 850	GSM 1900	WCDMA Band V	WCDMA Band II	LTE Band II	LTE Band IV	LTE Band VII	LTE Band XII	WIFI	MAX. ΣSAR _{1g}	Peak location separation ratio
Left, Cheek	0.131	0.053	0.092	0.062	0.049	0.047	0.036	0.401	0.496	0.627	N/A
Left, Tilt	0.075	0.035	0.062	0.034	0.030	0.024	0.021	0.254	0.475	0.550	N/A
Right, Cheek	0.117	0.055	0.098	0.064	0.053	0.050	0.039	0.409	0.486	0.603	N/A
Right, Tilt	0.069	0.030	0.064	0.039	0.035	0.025	0.026	0.240	0.469	0.538	N/A
Rear Side	0.657	0.700	0.245	0.740	0.795	0.230	0.311	0.763	0.039	0.834	N/A
Front Side	0.529	0.458	0.118	0.615	0.583	0.114	0.262	0.486	0.016	0.631	N/A
Left Edge	0.208	0.467	0.200	0.583	0.615	0.214	0.280	0.585	N/A	0.615	N/A
Right Edge	0.425	0.250	0.101	0.384	0.390	0.046	0.155	0.348	0.025	0.450	N/A
Top Edge	N/A	N/A	N/A	N/A	N/A	N/A	N/A	N/A	0.033	0.033	N/A
Bottom Edge	0.542	0.527	0.218	0.608	0.667	0.193	0.267	0.662	N/A	0.667	N/A

MAX. ΣSAR_{1g} = 0.834 W/kg < 1.6 W/kg, so the Simultaneous transmission SAR with volume scan are not required for WIFI and GSM/WCDMA

Simultaneous transmission SAR for Bluetooth and GSM/LTE

SAR _{1g} (W/kg) Test Position	GSM 850	GSM 1900	WCDMA Band V	WCDMA Band II	LTE Band II	LTE Band IV	LTE Band VII	LTE Band XII	BT	MAX. ΣSAR _{1g}	Peak location separation ratio
Left, Cheek	0.131	0.053	0.092	0.062	0.049	0.047	0.036	0.401	0.147	0.278	N/A
Left, Tilt	0.075	0.035	0.062	0.034	0.030	0.024	0.021	0.254	0.147	0.222	N/A
Right, Cheek	0.117	0.055	0.098	0.064	0.053	0.050	0.039	0.409	0.147	0.264	N/A
Right, Tilt	0.069	0.030	0.064	0.039	0.035	0.025	0.026	0.240	0.147	0.216	N/A
Rear Side	0.657	0.700	0.245	0.740	0.795	0.230	0.311	0.763	0.073	0.868	N/A
Front Side	0.529	0.458	0.118	0.615	0.583	0.114	0.262	0.486	0.073	0.688	N/A
Left Edge	0.208	0.467	0.200	0.583	0.615	0.214	0.280	0.585	0.073	0.688	N/A
Right Edge	0.425	0.250	0.101	0.384	0.390	0.046	0.155	0.348	0.073	0.498	N/A
Top Edge	N/A	N/A	N/A	N/A	N/A	N/A	N/A	N/A	0.073	0.073	N/A
Bottom Edge	0.542	0.527	0.218	0.608	0.667	0.193	0.267	0.662	0.073	0.740	N/A

MAX. ΣSAR_{1g} = 0.868 W/kg < 1.6 W/kg, so the Simultaneous transmission SAR with volume scan are not required for BT and GSM/WCDMA

7.3 System Check Results

System Performance Check at 750 MHz Head

Date: 2/20/2017

DUT: Dipole 750 MHz; Type: D750V3; Serial: 1133

Communication System: CW; Frequency: 750 MHz; Duty Cycle: 1:1

Medium parameters used: $f = 750\text{MHz}$; $\sigma = 0.89\text{ mho/m}$; $\epsilon_r = 41.9$; $\rho = 1000\text{ kg/m}^3$

Phantom section: Flat Section

DASY4 Configuration:

- Probe: ES3DV4 – SN3836; ConvF(9.43, 9.43, 9.43); Calibrated: 07/26/2016
- Sensor-Surface: 4mm (Mechanical Surface Detection)
- Electronics: DAE4 Sn1315; Calibrated: 7/26/2016
- Phantom: SAM 1; Type: SAM;
- Measurement SW: DASY52, Version 52.8 (2); SEMCAD X Version 14.6.6 (6824)

Area Scan (61x131x1): Measurement grid: $dx=15.00\text{ mm}$, $dy=15.00\text{ mm}$

Maximum value of SAR (interpolated) = 2.03 mW/g

Zoom Scan (5x5x7)/Cube 0: Measurement grid: $dx=8\text{mm}$, $dy=8\text{mm}$, $dz=5\text{mm}$

Reference Value = 47.4 V/m ; Power Drift = -0.091 dB

Peak SAR (extrapolated) = 2.96 W/kg

SAR(1 g) = 2.00 mW/g ; SAR(10 g) = 1.25 mW/g

Maximum value of SAR (measured) = 2.10 mW/g



0 dB = 2.10mW/g

System Performance Check 750MHz Head 250mW

System Performance Check at 750 MHz Body

Date: 2/25/2017

DUT: Dipole 750 MHz; Type: D750V3; Serial: 1133

Communication System: CW; Frequency: 750 MHz; Duty Cycle: 1:1

Medium parameters used: $f = 750\text{MHz}$; $\sigma = 0.96\text{ mho/m}$; $\epsilon_r = 55.5$; $\rho = 1000\text{ kg/m}^3$

Phantom section: Flat Section

DASY4 Configuration:

- Probe: ES3DV4 – SN3836; ConvF(9.38, 9.38, 9.38); Calibrated: 07/26/2016
- Sensor-Surface: 4mm (Mechanical Surface Detection)
- Electronics: DAE4 Sn1315; Calibrated: 7/26/2016
- Phantom: SAM 1; Type: SAM;
- Measurement SW: DASY52, Version 52.8 (2); SEMCAD X Version 14.6.6 (6824)

Area Scan (61x131x1): Measurement grid: $dx=15.00\text{ mm}$, $dy=15.00\text{ mm}$

Maximum value of SAR (interpolated) = 2.31 mW/g

Zoom Scan (5x5x7)/Cube 0: Measurement grid: $dx=8\text{mm}$, $dy=8\text{mm}$, $dz=5\text{mm}$

Reference Value = 49.1 V/m ; Power Drift = -0.141 dB

Peak SAR (extrapolated) = 3.20 W/kg

SAR(1 g) = 2.10 mW/g ; SAR(10 g) = 1.43 mW/g

Maximum value of SAR (measured) = 2.40 mW/g



0 dB = 2.40mW/g

System Performance Check 750MHz Body 250mW

System Performance Check at 835 MHz Head

Date: 2/20/2017

DUT: Dipole 835 MHz; Type: D835V2; Serial: 4d069

Communication System: CW; Frequency: 835 MHz; Duty Cycle: 1:1

Medium parameters used: $f = 835\text{MHz}$; $\sigma = 0.90\text{ mho/m}$; $\epsilon_r = 41.5$; $\rho = 1000\text{ kg/m}^3$

Phantom section: Flat Section

DASY4 Configuration:

- Probe: ES3DV4 – SN3836; ConvF(9.42, 9.42, 9.42); Calibrated: 07/26/2016
- Sensor-Surface: 4mm (Mechanical Surface Detection)
- Electronics: DAE4 Sn1315; Calibrated: 7/26/2016
- Phantom: SAM 1; Type: SAM;
- Measurement SW: DASY52, Version 52.8 (2); SEMCAD X Version 14.6.6 (6824)

Area Scan (61x61x1): Measurement grid: $dx=15.00\text{ mm}$, $dy=15.00\text{ mm}$

Maximum value of SAR (interpolated) = 2.82 mW/g

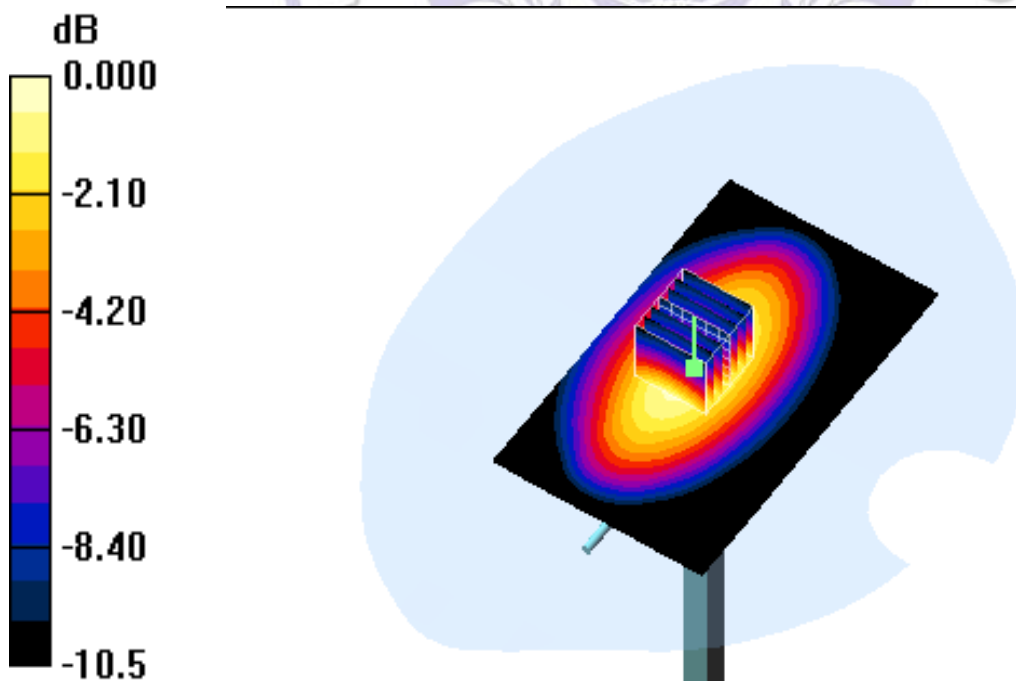
Zoom Scan (5x5x7)/Cube 0: Measurement grid: $dx=8\text{mm}$, $dy=8\text{mm}$, $dz=5\text{mm}$

Reference Value = 54.523 V/m ; Power Drift = -0.01dB

Peak SAR (extrapolated) = 4.068 W/kg

SAR(1 g) = 2.35 mW/g ; SAR(10 g) = 1.68 mW/g

Maximum value of SAR (measured) = 2.90 mW/g



0 dB = 2.90mW/g

System Performance Check 835MHz Head 250mW

System Performance Check at 835 MHz Body

Date: 2/25/2017

DUT: Dipole 835 MHz; Type: D835V2; Serial: 4d069

Communication System: CW; Frequency: 835 MHz; Duty Cycle: 1:1

Medium parameters used: $f = 835\text{MHz}$; $\sigma = 0.97\text{ mho/m}$; $\epsilon_r = 55.2$; $\rho = 1000\text{ kg/m}^3$

Phantom section: Flat Section

DASY4 Configuration:

- Probe: ES3DV4 – SN3836; ConvF(9.25, 9.25, 9.25); Calibrated: 07/26/2016
- Sensor-Surface: 4mm (Mechanical Surface Detection)
- Electronics: DAE4 Sn1315; Calibrated: 7/26/2016
- Phantom: SAM 1; Type: SAM;
- Measurement SW: DASY52, Version 52.8 (2); SEMCAD X Version 14.6.6 (6824)

Area Scan (61x61x1): Measurement grid: $dx=15.00\text{ mm}$, $dy=15.00\text{ mm}$

Maximum value of SAR (interpolated) = 2.72 mW/g

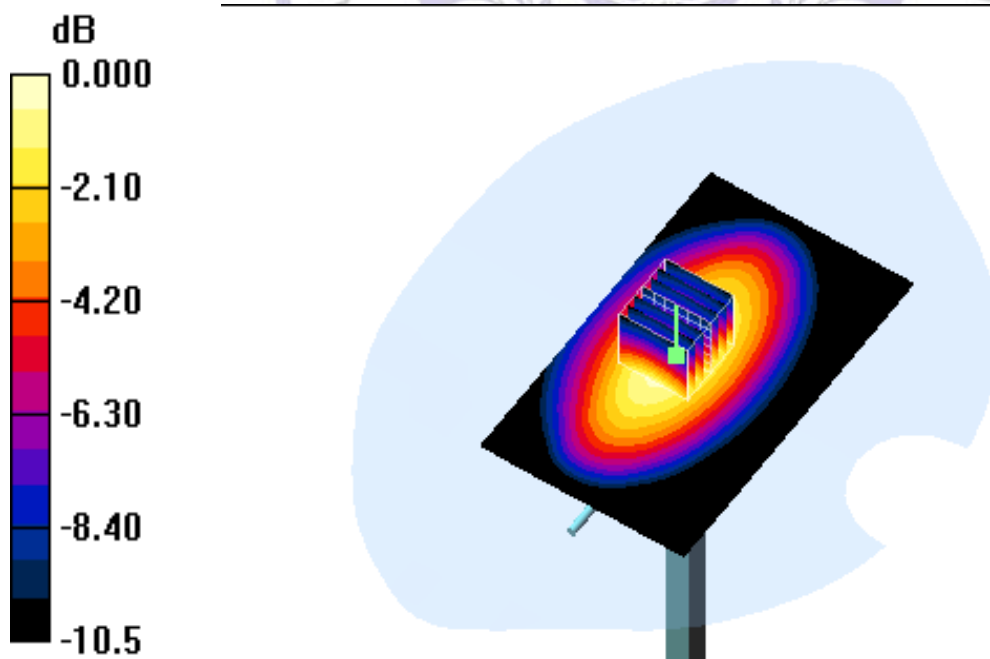
Zoom Scan (5x5x7)/Cube 0: Measurement grid: $dx=8\text{mm}$, $dy=8\text{mm}$, $dz=5\text{mm}$

Reference Value = 54.523 V/m ; Power Drift = -0.01dB

Peak SAR (extrapolated) = 4.068 W/kg

SAR(1 g) = 2.39 mW/g ; SAR(10 g) = 1.55 mW/g

Maximum value of SAR (measured) = 2.81 mW/g



0 dB = 2.81mW/g

System Performance Check 835MHz Body 250mW

System Performance Check at 1750 MHz Head

Date: 2/21/2017

DUT: Dipole 1750 MHz; Type: D1750V2; Serial: 1021

Communication System: CW; Frequency: 1750MHz; Duty Cycle: 1:1

Medium parameters used: $f = 1750\text{MHz}$; $\sigma = 1.37 \text{ mho/m}$; $\epsilon_r = 40.1$; $\rho = 1000 \text{ kg/m}^3$

Phantom section: Flat Section

DASY4 Configuration:

- Probe: ES3DV4 – SN3836; ConvF(8.04, 8.04, 8.04); Calibrated: 07/26/2016
- Sensor-Surface: 4mm (Mechanical Surface Detection)
- Electronics: DAE4 Sn1315; Calibrated: 7/26/2016
- Phantom: SAM 1; Type: SAM;
- Measurement SW: DASY52, Version 52.8 (2); SEMCAD X Version 14.6.6 (6824)

Area Scan (61x61x1): Measurement grid: $dx=15.00 \text{ mm}$, $dy=15.00 \text{ mm}$

Maximum value of SAR (interpolated) = 8.60 mW/g

Zoom Scan (5x5x7)/Cube 0: Measurement grid: $dx=8\text{mm}$, $dy=8\text{mm}$, $dz=5\text{mm}$

Reference Value = 83.712 V/m ; Power Drift = 0.03dB

Peak SAR (extrapolated) = 16.718 W/kg

SAR(1 g) = 8.97 mW/g ; SAR(10 g) = 4.64 mW/g

Maximum value of SAR (measured) = 9.95 mW/g



0 dB = 9.95mW/g

System Performance Check 1750MHz Head 250mW

System Performance Check at 1750 MHz Body

Date: 2/27/2017

DUT: Dipole 1750 MHz; Type: D1750V2; Serial: 1021

Communication System: CW; Frequency: 1750MHz; Duty Cycle: 1:1

Medium parameters used: $f = 1750\text{MHz}$; $\sigma = 1.49\text{ mho/m}$; $\epsilon_r = 53.4$; $\rho = 1000\text{ kg/m}^3$

Phantom section: Flat Section

DASY4 Configuration:

- Probe: ES3DV4 – SN3836; ConvF(7.64, 7.64, 7.64); Calibrated: 07/26/2016
- Sensor-Surface: 4mm (Mechanical Surface Detection)
- Electronics: DAE4 Sn1315; Calibrated: 7/26/2016
- Phantom: SAM 1; Type: SAM;
- Measurement SW: DASY52, Version 52.8 (2); SEMCAD X Version 14.6.6 (6824)

Area Scan (61x61x1): Measurement grid: $dx=15.00\text{ mm}$, $dy=15.00\text{ mm}$

Maximum value of SAR (interpolated) = 12.60 mW/g

Zoom Scan (5x5x7)/Cube 0: Measurement grid: $dx=8\text{mm}$, $dy=8\text{mm}$, $dz=5\text{mm}$

Reference Value = 81.17 V/m ; Power Drift = 0.03dB

Peak SAR (extrapolated) = 15.81 W/kg

SAR(1 g) = 8.81 mW/g ; SAR(10 g) = 4.74 mW/g

Maximum value of SAR (measured) = 12.71 mW/g



0 dB = 12.71 mW/g

System Performance Check 1750MHz Body 250mW

System Performance Check at 1900 MHz Head

Date: 2/22/2017

DUT: Dipole 1900 MHz; Type: D1900V2; Serial: 5d149

Communication System: CW; Frequency: 1900MHz; Duty Cycle: 1:1

Medium parameters used: $f = 1900\text{MHz}$; $\sigma = 1.40\text{ mho/m}$; $\epsilon_r = 40.0$; $\rho = 1000\text{ kg/m}^3$

Phantom section: Flat Section

DASY4 Configuration:

- Probe: ES3DV4 – SN3836; ConvF(7.60, 7.60, 7.60); Calibrated: 07/26/2016
- Sensor-Surface: 4mm (Mechanical Surface Detection)
- Electronics: DAE4 Sn1315; Calibrated: 7/26/2016
- Phantom: SAM 1; Type: SAM;
- Measurement SW: DASY52, Version 52.8 (2); SEMCAD X Version 14.6.6 (6824)

Area Scan (61x61x1): Measurement grid: $dx=15.00\text{ mm}$, $dy=15.00\text{ mm}$

Maximum value of SAR (interpolated) = 11.3 mW/g

Zoom Scan (5x5x7)/Cube 0: Measurement grid: $dx=8\text{mm}$, $dy=8\text{mm}$, $dz=5\text{mm}$

Reference Value = 80.6 V/m ; Power Drift = -0.005 dB

Peak SAR (extrapolated) = 17.5 W/kg

SAR(1 g) = 9.89 mW/g ; SAR(10 g) = 5.28 mW/g

Maximum value of SAR (measured) = 11.24 mW/g



0 dB = 11.24mW/g

System Performance Check 1900MHz Head 250mW

System Performance Check at 1900 MHz Body

Date: 2/28/2017

DUT: Dipole 1900 MHz; Type: D1900V2; Serial: 5d149

Communication System: CW; Frequency: 1900MHz; Duty Cycle: 1:1

Medium parameters used: $f = 1900\text{MHz}$; $\sigma = 1.52\text{ mho/m}$; $\epsilon_r = 53.3$; $\rho = 1000\text{ kg/m}^3$

Phantom section: Flat Section

DASY4 Configuration:

- Probe: ES3DV4 – SN3836; ConvF(7.33, 7.33, 7.33); Calibrated: 07/26/2016
- Sensor-Surface: 4mm (Mechanical Surface Detection)
- Electronics: DAE4 Sn1315; Calibrated: 7/26/2016
- Phantom: SAM 1; Type: SAM;
- Measurement SW: DASY52, Version 52.8 (2); SEMCAD X Version 14.6.6 (6824)

Area Scan (61x61x1): Measurement grid: $dx=15.00\text{ mm}$, $dy=15.00\text{ mm}$

Maximum value of SAR (interpolated) = 12.8 mW/g

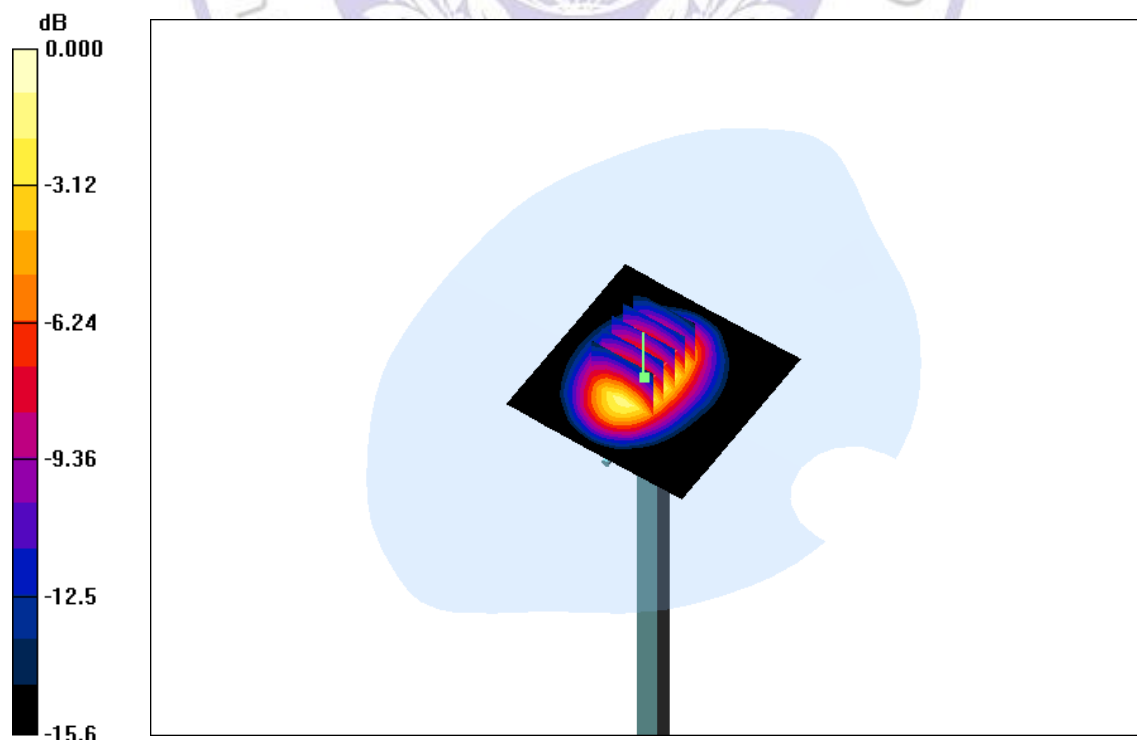
Zoom Scan (5x5x7)/Cube 0: Measurement grid: $dx=8\text{mm}$, $dy=8\text{mm}$, $dz=5\text{mm}$

Reference Value = 85.9 V/m ; Power Drift = 0.109 dB

Peak SAR (extrapolated) = 19.7 W/kg

SAR(1 g) = 9.97 mW/g ; SAR(10 g) = 5.39 mW/g

Maximum value of SAR (measured) = 12.47 mW/g



0 dB = 12.47mW/g

System Performance Check 1900MHz Body 250mW

System Performance Check at 2450 MHz Head

Date: 2/23/2017

DUT: Dipole 2450 MHz; Type: D2450V2; Serial: 955

Communication System: CW; Frequency: 2450MHz; Duty Cycle: 1:1

Medium parameters used: $f = 2450\text{MHz}$; $\sigma = 1.80\text{ mho/m}$; $\epsilon_r = 39.2$; $\rho = 1000\text{ kg/m}^3$

Phantom section: Flat Section

DASY4 Configuration:

- Probe: ES3DV4 – SN3836; ConvF(7.07, 7.07, 7.07); Calibrated: 07/26/2016
- Sensor-Surface: 4mm (Mechanical Surface Detection)
- Electronics: DAE4 Sn1315; Calibrated: 7/26/2016
- Phantom: SAM 1; Type: SAM;
- Measurement SW: DASY52, Version 52.8 (2); SEMCAD X Version 14.6.6 (6824)

Area Scan (61x61x1): Measurement grid: $dx=15.00\text{ mm}$, $dy=15.00\text{ mm}$

Maximum value of SAR (interpolated) = 16.7 mW/g

Zoom Scan (7x7x7)/Cube 0: Measurement grid: $dx=8\text{mm}$, $dy=8\text{mm}$, $dz=5\text{mm}$

Reference Value = 87.0 V/m ; Power Drift = 0.019 dB

Peak SAR (extrapolated) = 30.7 W/kg

SAR(1 g) = 13.05 mW/g ; SAR(10 g) = 6.24 mW/g

Maximum value of SAR (measured) = 16.07 mW/g



0 dB = 16.07mW/g

System Performance Check 2450MHz Head 250mW

System Performance Check at 2450MHz Body

Date: 3/03/2017

DUT: Dipole 2450 MHz; Type: D2450V2; Serial: 955

Communication System: CW; Frequency: 2450MHz; Duty Cycle: 1:1

Medium parameters used: $f = 2450\text{MHz}$; $\sigma = 1.95\text{ mho/m}$; $\epsilon_r = 52.7$; $\rho = 1000\text{ kg/m}^3$

Phantom section: Flat Section

DASY4 Configuration:

- Probe: ES3DV4 – SN3836; ConvF(7.20, 7.20, 7.20); Calibrated: 07/26/2016
- Sensor-Surface: 4mm (Mechanical Surface Detection)
- Electronics: DAE4 Sn1315; Calibrated: 7/26/2016
- Phantom: SAM 1; Type: SAM;
- Measurement SW: DASY52, Version 52.8 (2); SEMCAD X Version 14.6.6 (6824)

Area Scan (61x61x1): Measurement grid: $dx=15.00\text{ mm}$, $dy=15.00\text{ mm}$

Maximum value of SAR (interpolated) = 16.2 mW/g

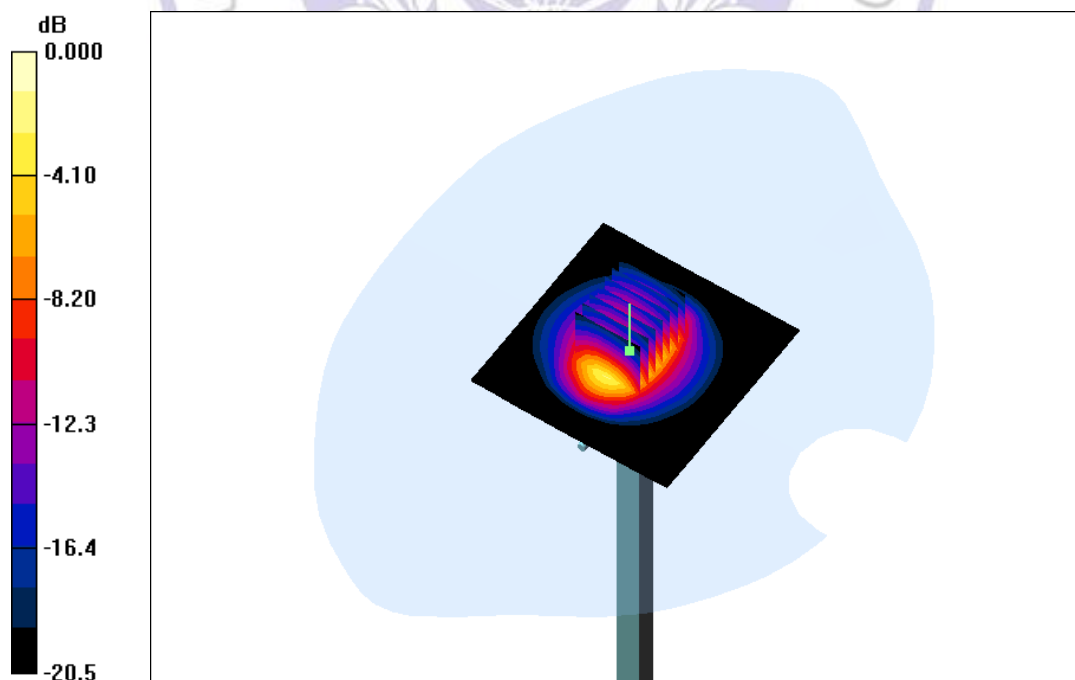
Zoom Scan (7x7x7)/Cube 0: Measurement grid: $dx=8\text{mm}$, $dy=8\text{mm}$, $dz=5\text{mm}$

Reference Value = 89.5 V/m ; Power Drift = 0.017 dB

Peak SAR (extrapolated) = 27.0 W/kg

SAR(1 g) = 13.65 mW/g ; SAR(10 g) = 6.47 mW/g

Maximum value of SAR (measured) = 15.59 mW/g



0 dB = 15.59mW/g

System Performance Check 2450MHz Body 250mW

System Performance Check at 2600 MHz Head

Date: 2/24/2017

DUT: Dipole 2600 MHz; Type: D2600V2; Serial: 1058

Communication System: CW; Frequency: 2600MHz; Duty Cycle: 1:1

Medium parameters used: $f = 2600\text{MHz}$; $\sigma = 1.96\text{ mho/m}$; $\epsilon_r = 39.0$; $\rho = 1000\text{ kg/m}^3$

Phantom section: Flat Section

DASY4 Configuration:

- Probe: ES3DV4 – SN3836; ConvF(6.96, 6.96, 6.96); Calibrated: 07/26/2016
- Sensor-Surface: 4mm (Mechanical Surface Detection)
- Electronics: DAE4 Sn1315; Calibrated: 7/26/2016
- Phantom: SAM 1; Type: SAM;
- Measurement SW: DASY52, Version 52.8 (2); SEMCAD X Version 14.6.6 (6824)

Area Scan (61x61x1): Measurement grid: $dx=15.00\text{ mm}$, $dy=15.00\text{ mm}$

Maximum value of SAR (interpolated) = 21.1 mW/g

Zoom Scan (7x7x7)/Cube 0: Measurement grid: $dx=8\text{mm}$, $dy=8\text{mm}$, $dz=5\text{mm}$

Reference Value = 84.1 V/m ; Power Drift = 0.032 dB

Peak SAR (extrapolated) = 30.2 W/kg

SAR(1 g) = 14.42 mW/g ; SAR(10 g) = 6.50 mW/g

Maximum value of SAR (measured) = 19.73 mW/g



0 dB = 19.73mW/g

System Performance Check 2600MHz Head 250mW

System Performance Check at 2600MHz Body

Date: 3/04/2017

DUT: Dipole 2600 MHz; Type: D2600V2; Serial: 1058

Communication System: CW; Frequency: 2600MHz; Duty Cycle: 1:1

Medium parameters used: $f = 2600\text{MHz}$; $\sigma = 2.16\text{ mho/m}$; $\epsilon_r = 52.5$; $\rho = 1000\text{ kg/m}^3$

Phantom section: Flat Section

DASY4 Configuration:

- Probe: ES3DV4 – SN3836; ConvF(6.99, 6.99, 6.99); Calibrated: 07/26/2016
- Sensor-Surface: 4mm (Mechanical Surface Detection)
- Electronics: DAE4 Sn1315; Calibrated: 7/26/2016
- Phantom: SAM 1; Type: SAM;
- Measurement SW: DASY52, Version 52.8 (2); SEMCAD X Version 14.6.6 (6824)

Area Scan (61x61x1): Measurement grid: $dx=15.00\text{ mm}$, $dy=15.00\text{ mm}$

Maximum value of SAR (interpolated) = 25.1 mW/g

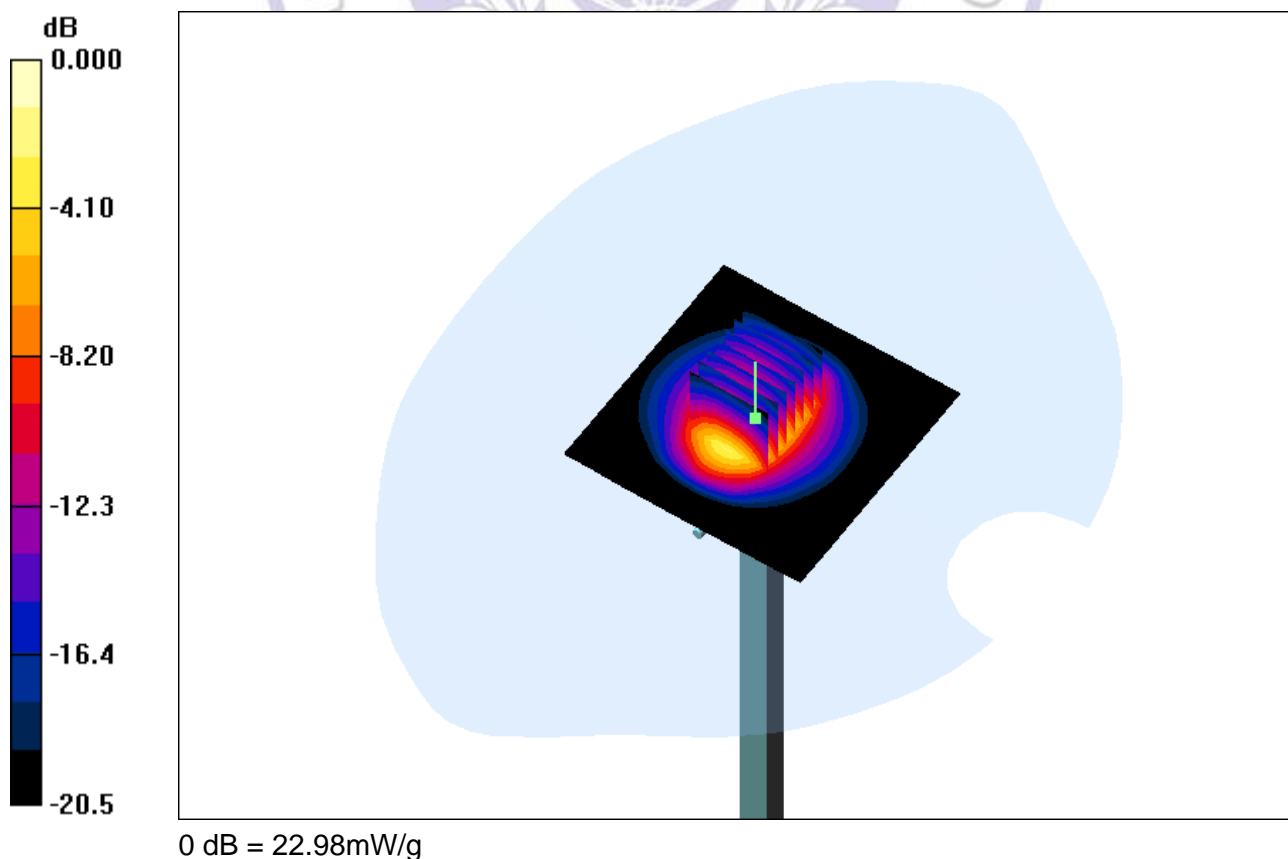
Zoom Scan (7x7x7)/Cube 0: Measurement grid: $dx=8\text{mm}$, $dy=8\text{mm}$, $dz=5\text{mm}$

Reference Value = 89.4 V/m ; Power Drift = 0.018 dB

Peak SAR (extrapolated) = 34.1 W/kg

SAR(1 g) = 14.17 mW/g ; SAR(10 g) = 6.39 mW/g

Maximum value of SAR (measured) = 22.98 mW/g



System Performance Check 2600MHz Body 250mW

7.4 SAR Test Graph Results

GSM850_GSM Voice_Left Cheek_Middle Channel

Date: 2/20/2017

Communication System: GSM 850; Frequency: 836.6 MHz; Duty Cycle: 1:1

Medium parameters used (interpolated): $f = 836.6$ MHz; $\sigma = 0.883$ mho/m; $\epsilon_r = 41.25$; $\rho = 1000$ kg/m³

Phantom section: Left Section

DASY4 Configuration:

- Probe: ES3DV4 – SN3836; ConvF(9.42, 9.42, 9.42); Calibrated: 07/26/2016
- Sensor-Surface: 4mm (Mechanical Surface Detection)
- Electronics: DAE4 Sn1315; Calibrated: 7/26/2016
- Phantom: SAM 1; Type: SAM;
- Measurement SW: DASY52, Version 52.8 (2); SEMCAD X Version 14.6.6 (6824)

Area Scan (81x151x1): Measurement grid: dx=15mm, dy=15mm

Maximum value of SAR (interpolated) = 0.138 mW/g

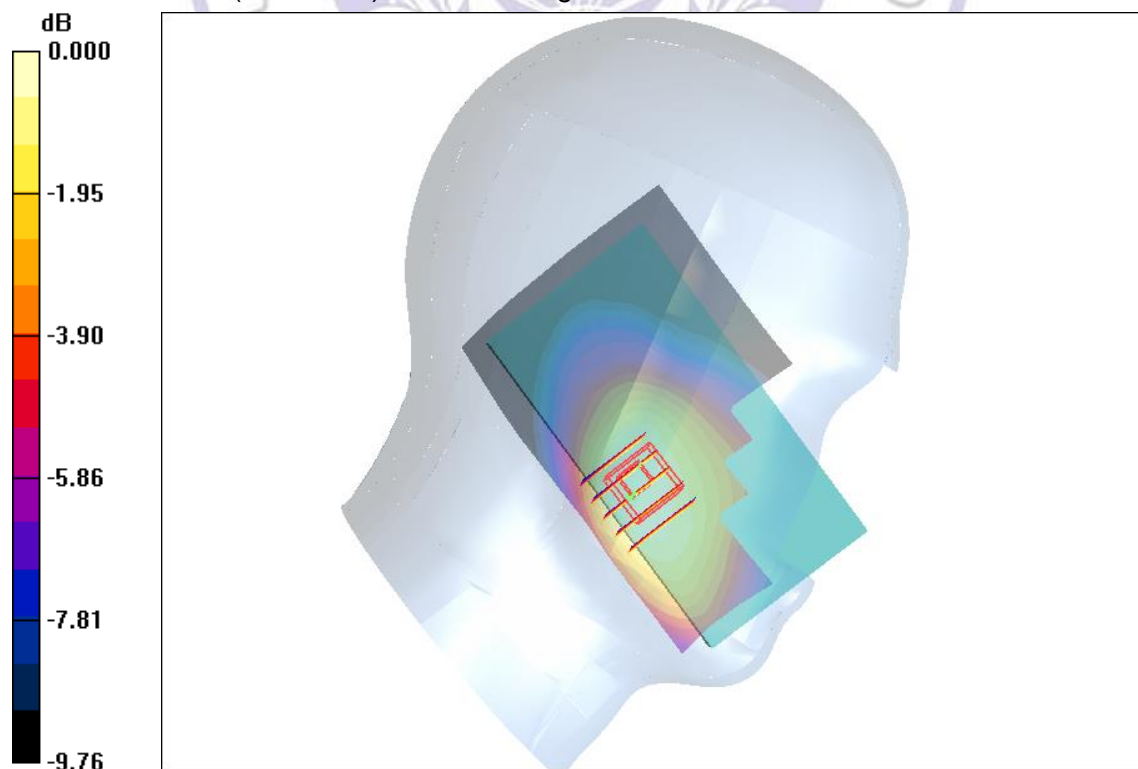
Zoom Scan (5x5x7)/Cube 0: Measurement grid: dx=8mm, dy=8mm, dz=5mm

Reference Value = 4.42 V/m; Power Drift = -0.05 dB

Peak SAR (extrapolated) = 0.166 W/kg

SAR(1 g) = 0.129 mW/g; SAR(10 g) = 0.099 mW/g

Maximum value of SAR (measured) = 0.144 mW/g



0 dB = 0.144mW/g

Figure 1: GSM850_GSM Voice_Left Cheek_Middle Channel

GSM1900_GSM Voice_Right Cheek_Mid Channel

Date: 2017-2-22

Communication System: GSM1900; Frequency: 1880 MHz; Duty Cycle: 1:1

Medium parameters used (interpolated): $f = 1880$ MHz; $\sigma = 1.405$ mho/m; $\epsilon_r = 39.62$; $\rho = 1000$ kg/m³

Phantom section: Right Section

DASY4 Configuration:

- Probe: ES3DV4 – SN3836; ConvF(7.60, 7.60, 7.60); Calibrated: 07/26/2016
- Sensor-Surface: 4mm (Mechanical Surface Detection)
- Electronics: DAE4 Sn1315; Calibrated: 7/26/2016
- Phantom: SAM 1; Type: SAM;
- Measurement SW: DASY52, Version 52.8 (2); SEMCAD X Version 14.6.6 (6824)

Area Scan (81x151x1): Measurement grid: $dx=15$ mm, $dy=15$ mm

Maximum value of SAR (interpolated) = 0.056 mW/g

Zoom Scan (5x5x7)/Cube 0: Measurement grid: $dx=8$ mm, $dy=8$ mm, $dz=5$ mm

Reference Value = 1.50 V/m; Power Drift = 0.05 dB

Peak SAR (extrapolated) = 0.090 W/kg

SAR(1 g) = 0.053 mW/g; SAR(10 g) = 0.029 mW/g

Maximum value of SAR (measured) = 0.059 mW/g

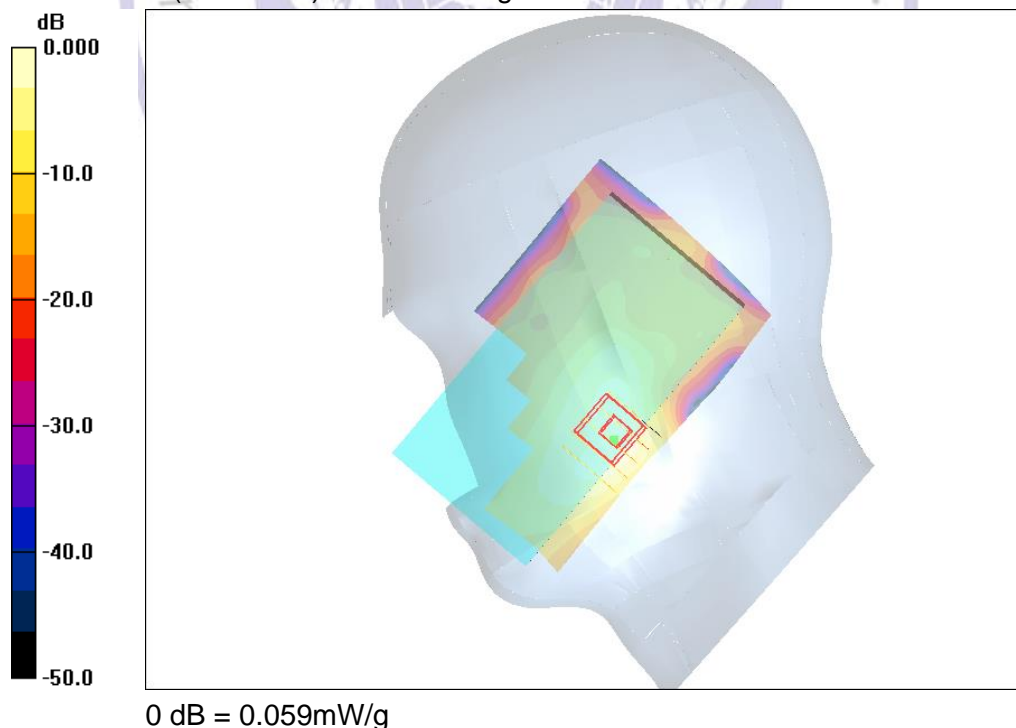


Figure 2: GSM1900_GSM Voice_Right Cheek_Mid Channel

WCDMA Band V_RCM_Left Check_Middle Channel

Date: 2017-2-20

Communication System: W850; Frequency: 836.6 MHz; Duty Cycle: 1:1

Medium parameters used (interpolated): $f = 837$ MHz; $\sigma = 0.898$ mho/m; $\epsilon_r = 41.4$; $\rho = 1000$ kg/m³

Phantom section: Left Section

DASY4 Configuration:

- Probe: ES3DV4 – SN3836; ConvF(9.42, 9.42, 9.42); Calibrated: 07/26/2016
- Sensor-Surface: 4mm (Mechanical Surface Detection)
- Electronics: DAE4 Sn1315; Calibrated: 7/26/2016
- Phantom: SAM 1; Type: SAM;
- Measurement SW: DASY52, Version 52.8 (2); SEMCAD X Version 14.6.6 (6824)

Area Scan (61x101x1): Measurement grid: dx=15mm, dy=15mm

Maximum value of SAR (interpolated) = 0.101 mW/g

Zoom Scan (5x5x7)/Cube 0: Measurement grid: dx=8mm, dy=8mm, dz=5mm

Reference Value = 3.60 V/m; Power Drift = -0.05 dB

Peak SAR (extrapolated) = 0.117 W/kg

SAR(1 g) = 0.095 mW/g; SAR(10 g) = 0.073 mW/g

Maximum value of SAR (measured) = 0.098 mW/g

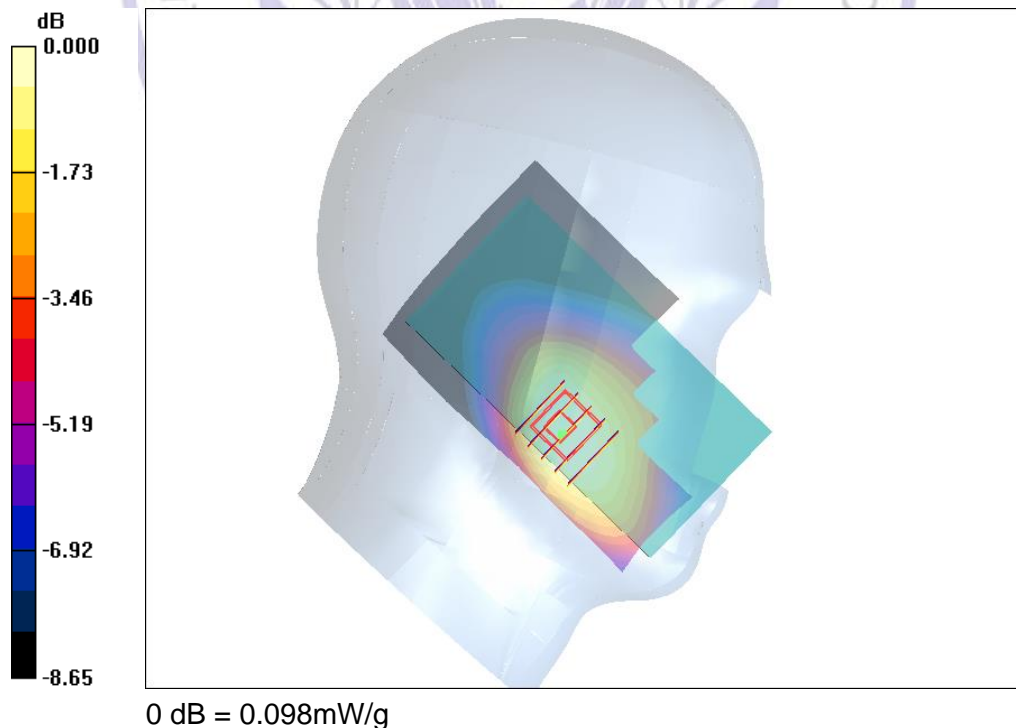


Figure 3: WCDMA Band V_RCM_Left Check_Middle Channel

WCDMA Band II_RCM_Left Check_Middle Channel

Date: 2017-2-22

Communication System: W1900; Frequency: 1880 MHz; Duty Cycle: 1:1

Medium parameters used (interpolated): $f = 1880$ MHz; $\sigma = 1.36$ mho/m; $\epsilon_r = 39.8$; $\rho = 1000$ kg/m³

Phantom section: Right Section

DASY4 Configuration:

- Probe: ES3DV4 – SN3836; ConvF(7.60, 7.60, 7.60); Calibrated: 07/26/2016
- Sensor-Surface: 4mm (Mechanical Surface Detection)
- Electronics: DAE4 Sn1315; Calibrated: 7/26/2016
- Phantom: SAM 1; Type: SAM;
- Measurement SW: DASY52, Version 52.8 (2); SEMCAD X Version 14.6.6 (6824)

Area Scan (81x151x1): Measurement grid: dx=15mm, dy=15mm

Maximum value of SAR (interpolated) = 0.074 mW/g

Zoom Scan (5x5x7)/Cube 0: Measurement grid: dx=8mm, dy=8mm, dz=5mm

Reference Value = 2.04 V/m; Power Drift = -0.11 dB

Peak SAR (extrapolated) = 0.103 W/kg

SAR(1 g) = 0.061 mW/g; SAR(10 g) = 0.034 mW/g

Maximum value of SAR (measured) = 0.067 mW/g

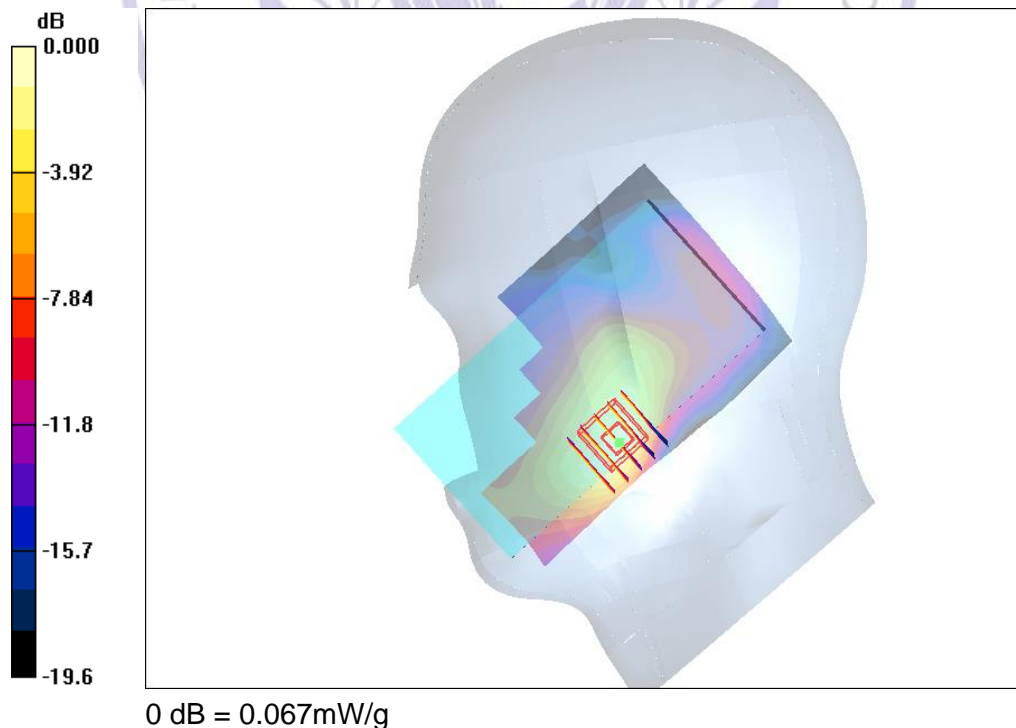


Figure 4: WCDMA Band II_RCM_Right Check_Middle Channel

LTE Band II_QPSK _ Left Check _ Middle Channel

Date: 2017-2-22

Communication System: LTE B2; Frequency: 1880 MHz; Duty Cycle: 1:1

Medium parameters used: $f = 1880$ MHz; $\sigma = 1.41$ mho/m; $\epsilon_r = 40.29$; $\rho = 1000$ kg/m³

Phantom section: Left Section

DASY4 Configuration:

- Probe: ES3DV4 – SN3836; ConvF(7.60, 7.60, 7.60); Calibrated: 07/26/2016
- Sensor-Surface: 4mm (Mechanical Surface Detection)
- Electronics: DAE4 Sn1315; Calibrated: 7/26/2016
- Phantom: SAM 1; Type: SAM;
- Measurement SW: DASY52, Version 52.8 (2); SEMCAD X Version 14.6.6 (6824)

Area Scan (81x151x1): Measurement grid: $dx=15$ mm, $dy=15$ mm

Maximum value of SAR (interpolated) = 0.046 mW/g

Zoom Scan (5x5x7)/Cube 0: Measurement grid: $dx=8$ mm, $dy=8$ mm, $dz=5$ mm

Reference Value = 2.42 V/m; Power Drift = -0.12 dB

Peak SAR (extrapolated) = 0.065 W/kg

SAR(1 g) = 0.044 mW/g; SAR(10 g) = 0.029 mW/g

Maximum value of SAR (measured) = 0.047 mW/g

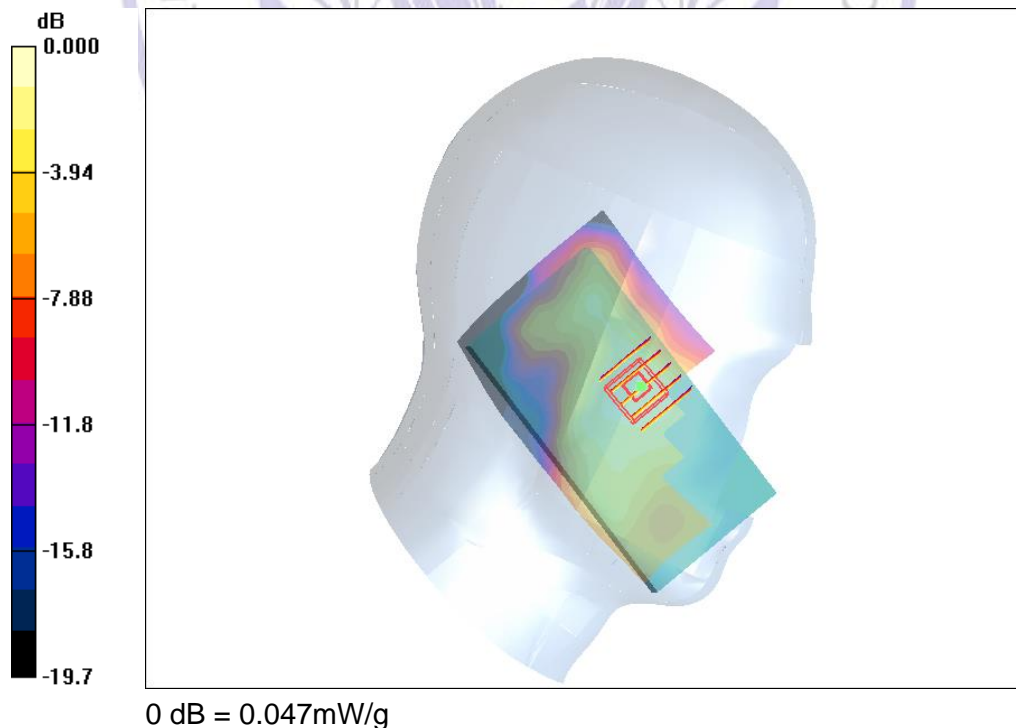


Figure 5: LTE Band II_QPSK _ Left Check _ Middle Channel

LTE Band IV_QPSK _ Right Check _ Middle Channel

Date: 2017-2-21

Communication System: LTE B4; Frequency: 1732.5 MHz; Duty Cycle: 1:1

Medium parameters used: $f = 1732.5$ MHz; $\sigma = 1.34$ mho/m; $\epsilon_r = 41.5$; $\rho = 1000$ kg/m³

Phantom section: Right Section

DASY4 Configuration:

- Probe: ES3DV4 – SN3836; ConvF(8.04, 8.04, 8.04); Calibrated: 07/26/2016
- Sensor-Surface: 4mm (Mechanical Surface Detection)
- Electronics: DAE4 Sn1315; Calibrated: 7/26/2016
- Phantom: SAM 1; Type: SAM;
- Measurement SW: DASY52, Version 52.8 (2); SEMCAD X Version 14.6.6 (6824)

Area Scan (81x151x1): Measurement grid: dx=15mm, dy=15mm

Maximum value of SAR (interpolated) = 0.044 mW/g

Zoom Scan (5x5x7)/Cube 0: Measurement grid: dx=8mm, dy=8mm, dz=5mm

Reference Value = 7.9 V/m; Power Drift = -0.15 dB

Peak SAR (extrapolated) = 0.060 W/kg

SAR(1 g) = 0.037 mW/g; SAR(10 g) = 0.022 mW/g

Maximum value of SAR (measured) = 0.040 mW/g

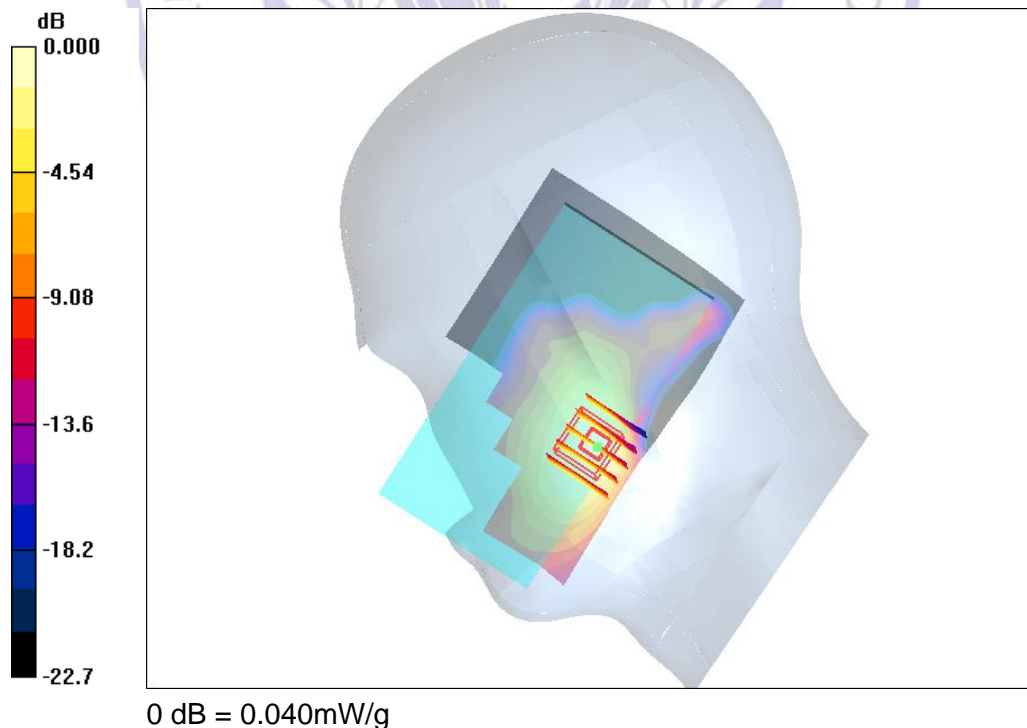


Figure 6: LTE Band IV_QPSK _ Right Check _ Middle Channel

LTE Band VII_QPSK _ Right Check _ Middle Channel

Date: 2017-2-24

Communication System: LTE B7; Frequency: 2535 MHz;Duty Cycle: 1:1

Medium parameters used (interpolated): $f = 2535$ MHz; $\sigma = 1.81$ mho/m; $\epsilon_r = 38.1$; $\rho = 1000$ kg/m³

Phantom section: Right Section

DASY4 Configuration:

- Probe: ES3DV4 – SN3836;ConvF(6.96, 6.96, 6.96); Calibrated: 07/26/2016
- Sensor-Surface: 4mm (Mechanical Surface Detection)
- Electronics: DAE4 Sn1315; Calibrated: 7/26/2016
- Phantom: SAM 1; Type: SAM;
- Measurement SW: DASY52, Version 52.8 (2); SEMCAD X Version 14.6.6 (6824)

Area Scan (81x151x1): Measurement grid: dx=15mm, dy=15mm

Maximum value of SAR (interpolated) = 0.032 mW/g

Zoom Scan (7x7x7)/Cube 0: Measurement grid: dx=5mm, dy=5mm, dz=5mm

Reference Value = 1.94 V/m; Power Drift = -0.11 dB

Peak SAR (extrapolated) = 0.055 W/kg

SAR(1 g) = 0.028 mW/g; SAR(10 g) = 0.016 mW/g

Maximum value of SAR (measured) = 0.030 mW/g

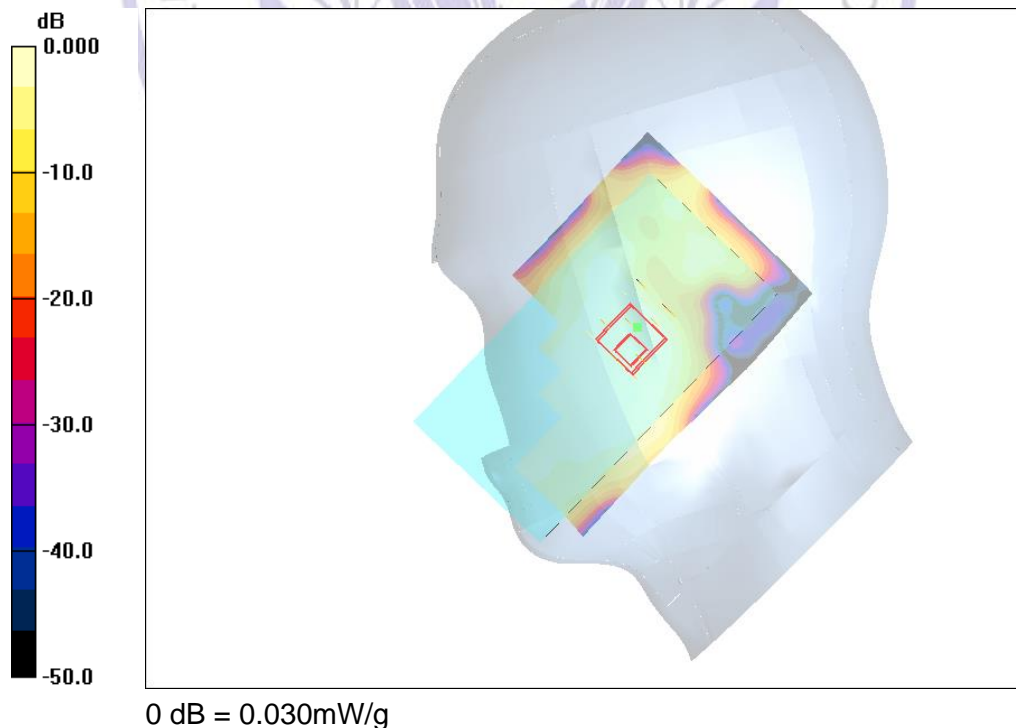


Figure 7: LTE Band VII_QPSK _ Right Check _ Middle Channel

LTE Band XII_QPSK _ Right Check _ Middle Channel

Date: 2017-2-20

Communication System: LTE B12; Frequency: 707.5 MHz; Duty Cycle: 1:1

Medium parameters used: $f = 707.5$ MHz; $\sigma = 0.905$ mho/m; $\epsilon_r = 41.3$; $\rho = 1000$ kg/m³

Phantom section: Right Section

DASY4 Configuration:

- Probe: ES3DV4 – SN3836; ConvF(9.43, 9.43, 9.43); Calibrated: 07/26/2016
- Sensor-Surface: 4mm (Mechanical Surface Detection)
- Electronics: DAE4 Sn1315; Calibrated: 7/26/2016
- Phantom: SAM 1; Type: SAM;
- Measurement SW: DASY52, Version 52.8 (2); SEMCAD X Version 14.6.6 (6824)

Area Scan (81x151x1): Measurement grid: dx=15mm, dy=15mm

Maximum value of SAR (interpolated) = 0.658 mW/g

Zoom Scan (5x5x7)/Cube 0: Measurement grid: dx=8mm, dy=8mm, dz=5mm

Reference Value = 5.17 V/m; Power Drift = -0.07 dB

Peak SAR (extrapolated) = 0.686 W/kg

SAR(1 g) = 0.318 mW/g; SAR(10 g) = 0.117 mW/g

Maximum value of SAR (measured) = 0.558 mW/g

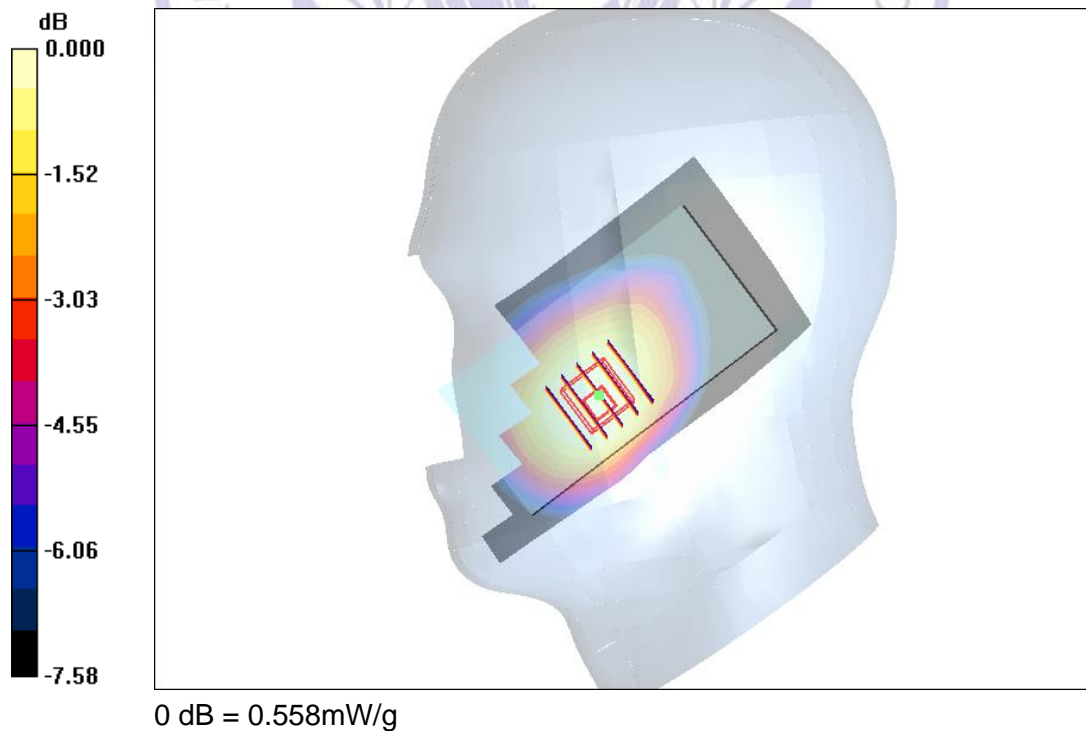


Figure 8: LTE Band XII_QPSK _ Right Check _ Middle Channel

WLAN _ Left Check _ Middle Channel

Date: 2017-2-23

Communication System: 802.11b; Frequency: 2437 MHz; Duty Cycle: 1:1

Medium parameters used: $f = 2437$ MHz; $\sigma = 1.84$ mho/m; $\epsilon_r = 38.7$; $\rho = 1000$ kg/m³

Phantom section: Right Section

DASY4 Configuration:

- Probe: ES3DV4 – SN3836; ConvF(7.07, 7.07, 7.07); Calibrated: 07/26/2016
- Sensor-Surface: 4mm (Mechanical Surface Detection)
- Electronics: DAE4 Sn1315; Calibrated: 7/26/2016
- Phantom: SAM 1; Type: SAM;
- Measurement SW: DASY52, Version 52.8 (2); SEMCAD X Version 14.6.6 (6824)

Area Scan (81x151x1): Measurement grid: dx=15mm, dy=15mm

Maximum value of SAR (interpolated) = 0.588 mW/g

Zoom Scan (7x7x7)/Cube 0: Measurement grid: dx=5mm, dy=5mm, dz=5mm

Reference Value = 7.47 V/m; Power Drift = -0.11 dB

Peak SAR (extrapolated) = 0.716 W/kg

SAR(1 g) = 0.467 mW/g; SAR(10 g) = 0.277 mW/g

Maximum value of SAR (measured) = 0.563 mW/g

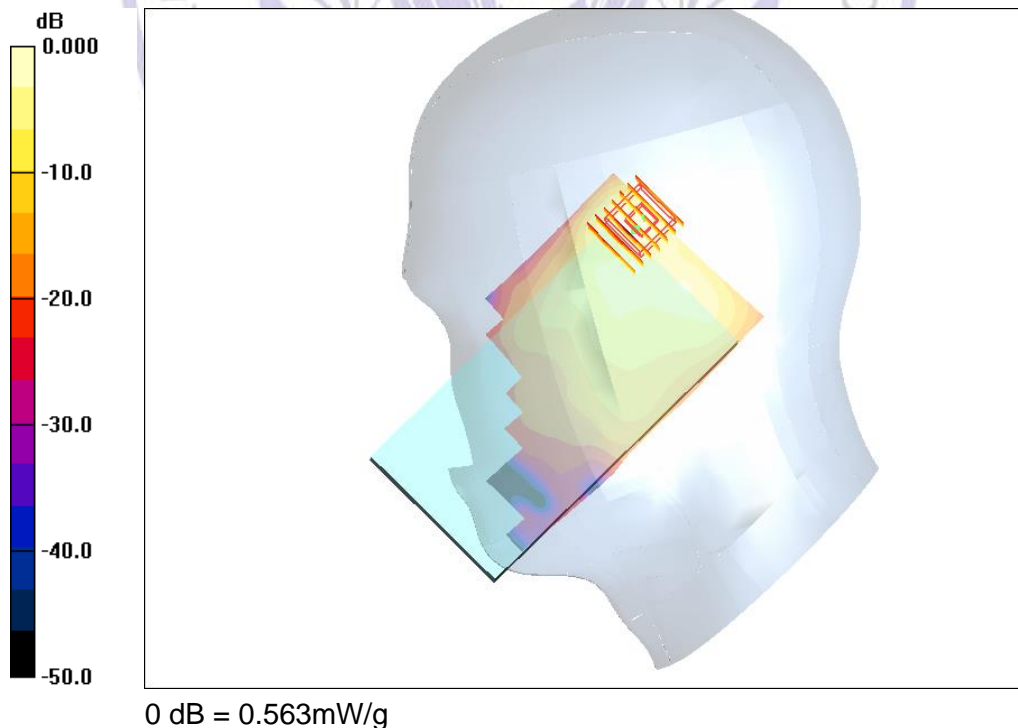


Figure 9: WLAN _ Right Check _ Middle Channel

GSM850_Rear side_10mm_Middle Channel

Date: 2017-2-25

Communication System: GSM 850; Frequency: 836.6 MHz; Duty Cycle: 1:1

Medium parameters used (interpolated): $f = 836.6$ MHz; $\sigma = 0.965$ mho/m; $\epsilon_r = 55.94$; $\rho = 1000$ kg/m³;

Phantom section: Flat Section

DASY4 Configuration:

- Probe: ES3DV4 – SN3836; ConvF(9.25, 9.25, 9.25); Calibrated: 07/26/2016
- Sensor-Surface: 4mm (Mechanical Surface Detection)
- Electronics: DAE4 Sn1315; Calibrated: 7/26/2016
- Phantom: SAM 1; Type: SAM;
- Measurement SW: DASY52, Version 52.8 (2); SEMCAD X Version 14.6.6 (6824)

Area Scan (58x127x1): Measurement grid: dx=15mm, dy=15mm

Maximum value of SAR (interpolated) = 0.811 mW/g

Zoom Scan (5x5x7)/Cube 0: Measurement grid: dx=8mm, dy=8mm, dz=5mm

Reference Value = 18.5 V/m; Power Drift = -0.04 dB

Peak SAR (extrapolated) = 1.22 W/kg

SAR(1 g) = 0.635 mW/g; SAR(10 g) = 0.438 mW/g

Maximum value of SAR (measured) = 0.797 mW/g

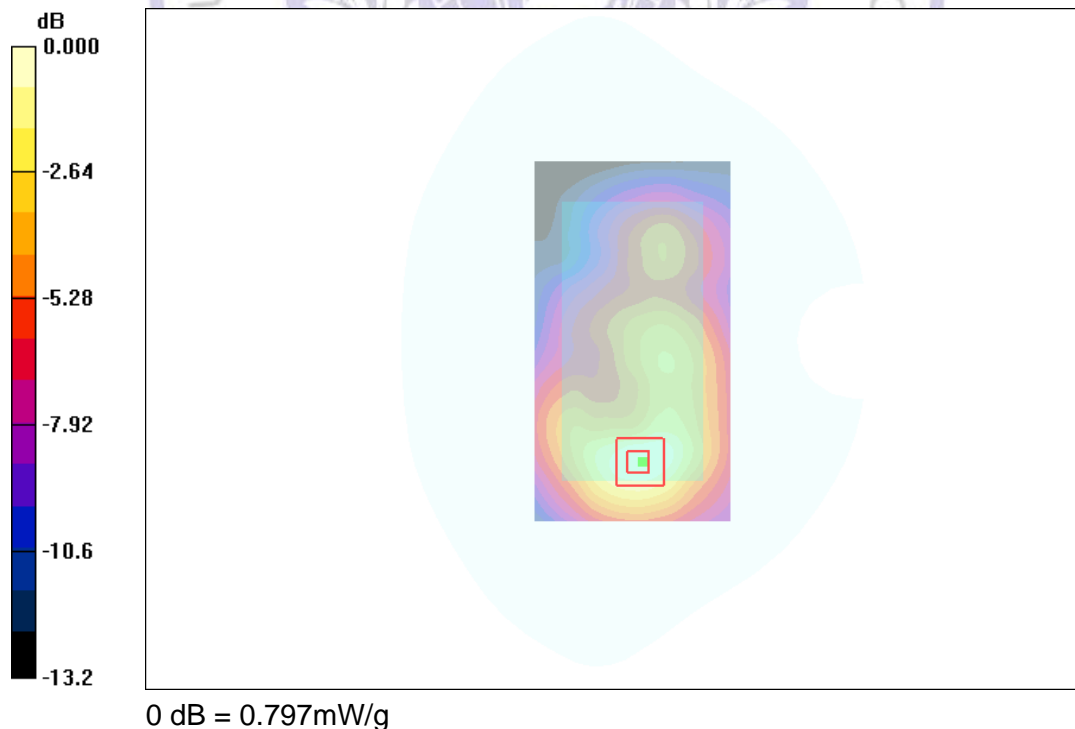


Figure 10: GSM850_Rear side_10mm_Middle Channel

GSM1900_Rear side_10mm_Middle Channel

Date: 2017-2-28

Communication System: GSM 1900; Frequency: 1880 MHz; Duty Cycle: 1:1

Medium parameters used (interpolated): $f = 1880$ MHz; $\sigma = 1.558$ mho/m; $\epsilon_r = 52.99$; $\rho = 1000$ kg/m³

Phantom section: Flat Section

DASY4 Configuration:

- Probe: ES3DV4 – SN3836; ConvF(7.33, 7.33, 7.33); Calibrated: 07/26/2016
- Sensor-Surface: 4mm (Mechanical Surface Detection)
- Electronics: DAE4 Sn1315; Calibrated: 7/26/2016
- Phantom: SAM 1; Type: SAM;
- Measurement SW: DASY52, Version 52.8 (2); SEMCAD X Version 14.6.6 (6824)

Area Scan (58x127x1): Measurement grid: dx=15mm, dy=15mm

Maximum value of SAR (interpolated) = 0.720 mW/g

Zoom Scan (5x5x7)/Cube 0: Measurement grid: dx=8mm, dy=8mm, dz=5mm

Reference Value = 5.43 V/m; Power Drift = -0.07 dB

Peak SAR (extrapolated) = 1.24 W/kg

SAR(1 g) = 0.687 mW/g; SAR(10 g) = 0.353 mW/g

Maximum value of SAR (measured) = 0.760 mW/g

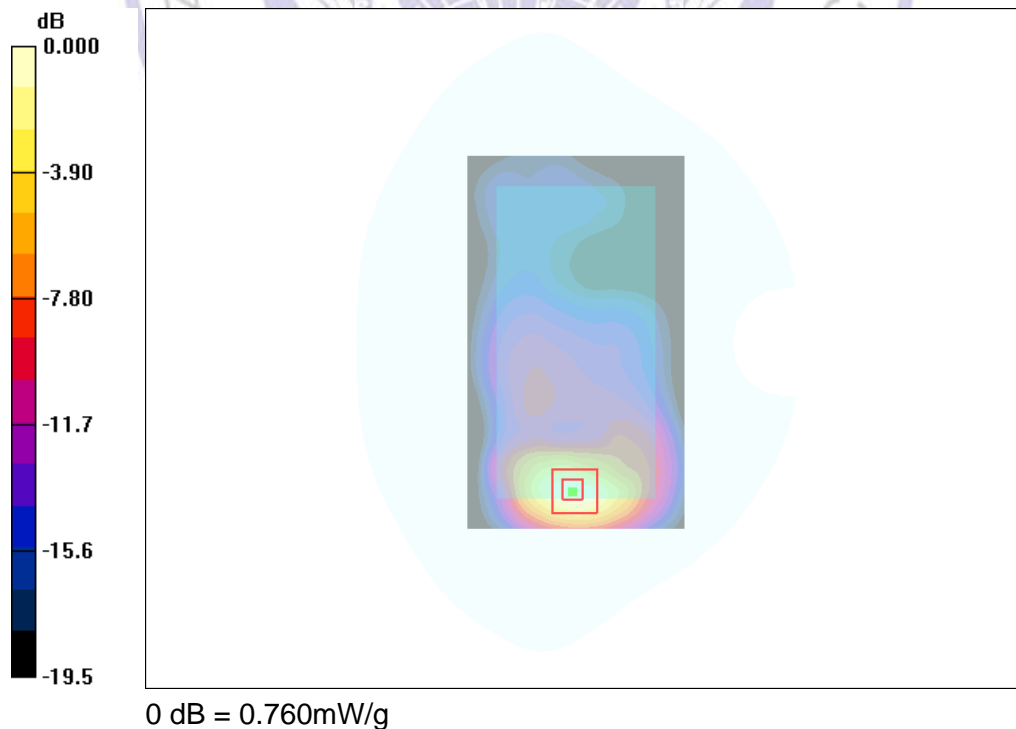


Figure 11: GSM1900_Rear side_10mm_Middle Channel

WCDMA Band V_RCM _ Rear side_10mm_Middle Channel

Date: 2017-2-25

Communication System: W850; Frequency: 836.6 MHz; Duty Cycle: 1:1

Medium parameters used: $f = 837$ MHz; $\sigma = 1.01$ mho/m; $\epsilon_r = 55.5$; $\rho = 1000$ kg/m³

Phantom section: Flat Section

DASY4 Configuration:

- Probe: ES3DV4 – SN3836; ConvF(9.25, 9.25, 9.25); Calibrated: 07/26/2016
- Sensor-Surface: 4mm (Mechanical Surface Detection)
- Electronics: DAE4 Sn1315; Calibrated: 7/26/2016
- Phantom: SAM 1; Type: SAM;
- Measurement SW: DASY52, Version 52.8 (2); SEMCAD X Version 14.6.6 (6824)

Area Scan (81x151x1): Measurement grid: dx=15mm, dy=15mm

Maximum value of SAR (interpolated) = 0.265 mW/g

Zoom Scan (5x5x7)/Cube 0: Measurement grid: dx=8mm, dy=8mm, dz=5mm

Reference Value = 10.4 V/m; Power Drift = 0.05 dB

Peak SAR (extrapolated) = 0.391 W/kg

SAR(1 g) = 0.237 mW/g; SAR(10 g) = 0.142 mW/g

Maximum value of SAR (measured) = 0.260 mW/g

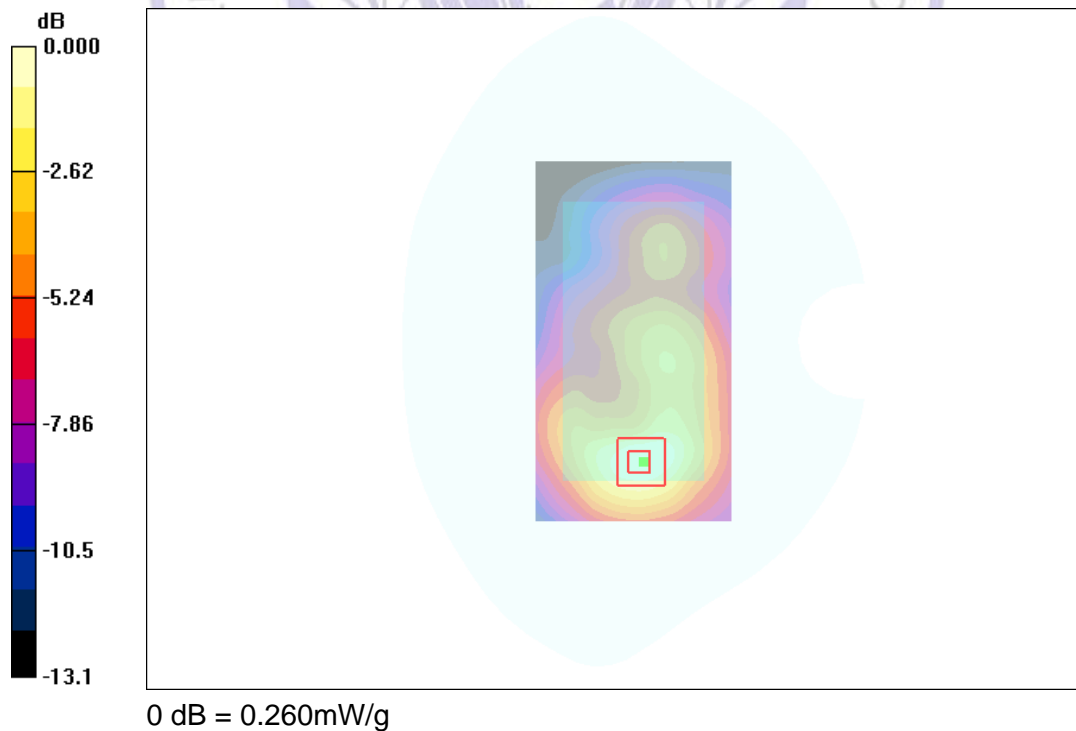


Figure 12: WCDMA Band V_RCM _ Rear side_10mm_Middle Channel

WCDMA Band II_RCM _ Rear side_10mm_Middle Channel

Date: 2017-2-28

Communication System: W1900; Frequency: 1880 MHz; Duty Cycle: 1:1

Medium parameters used (interpolated): $f = 1907.6$ MHz; $\sigma = 1.48$ mho/m; $\epsilon_r = 52.9$; $\rho = 1000$ kg/m³

Phantom section: Flat Section

DASY4 Configuration:

- Probe: ES3DV4 – SN3836;ConvF(7.33, 7.33, 7.33); Calibrated: 07/26/2016
- Sensor-Surface: 4mm (Mechanical Surface Detection)
- Electronics: DAE4 Sn1315; Calibrated: 7/26/2016
- Phantom: SAM 1; Type: SAM;
- Measurement SW: DASY52, Version 52.8 (2); SEMCAD X Version 14.6.6 (6824)

Area Scan (81x151x1): Measurement grid: dx=15mm, dy=15mm

Maximum value of SAR (interpolated) = 0.747 mW/g

Zoom Scan (5x5x7)/Cube 0: Measurement grid: dx=8mm, dy=8mm, dz=5mm

Reference Value = 5.45 V/m; Power Drift = -0.10 dB

Peak SAR (extrapolated) = 1.28 W/kg

SAR(1 g) = 0.703 mW/g; SAR(10 g) = 0.359 mW/g

Maximum value of SAR (measured) = 0.781 mW/g

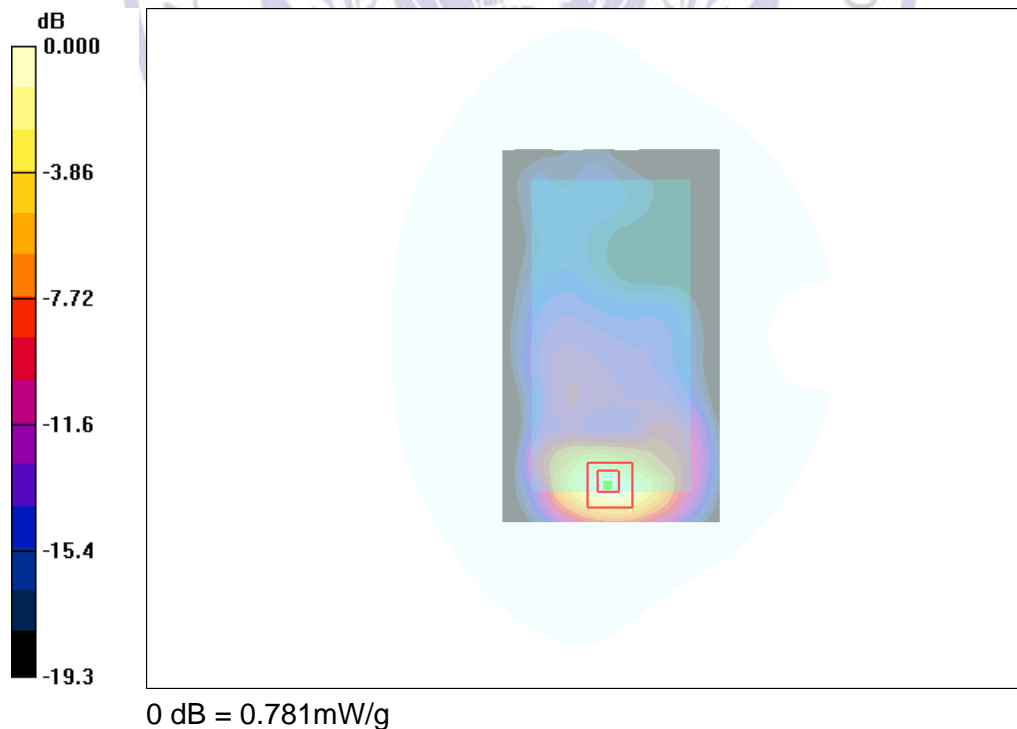


Figure 13: WCDMA Band II_RCM _ Rear side_10mm_Middle Channel

LTE Band II_QPSK _ Rear side_10mm_ Middle Channel

Date: 2017-2-28

Communication System: LTE B2; Frequency: 1880 MHz;Duty Cycle: 1:1

Medium parameters used: $f = 1880$ MHz; $\sigma = 1.54$ mho/m; $\epsilon_r = 53.69$; $\rho = 1000$ kg/m³

Phantom section: Flat Section

DASY4 Configuration:

- Probe: ES3DV4 – SN3836;ConvF(7.33, 7.33, 7.33); Calibrated: 07/26/2016
- Sensor-Surface: 4mm (Mechanical Surface Detection)
- Electronics: DAE4 Sn1315; Calibrated: 7/26/2016
- Phantom: SAM 1; Type: SAM;
- Measurement SW: DASY52, Version 52.8 (2); SEMCAD X Version 14.6.6 (6824)

Area Scan (81x151x1): Measurement grid: dx=15mm, dy=15mm

Maximum value of SAR (interpolated) = 1.08 mW/g

Zoom Scan (5x5x7)/Cube 0: Measurement grid: dx=8mm, dy=8mm, dz=5mm

Reference Value = 6.23 V/m; Power Drift = -0.10 dB

Peak SAR (extrapolated) = 1.29 W/kg

SAR(1 g) = 0.664 mW/g; SAR(10 g) = 0.458 mW/g

Maximum value of SAR (measured) = 0.991 mW/g

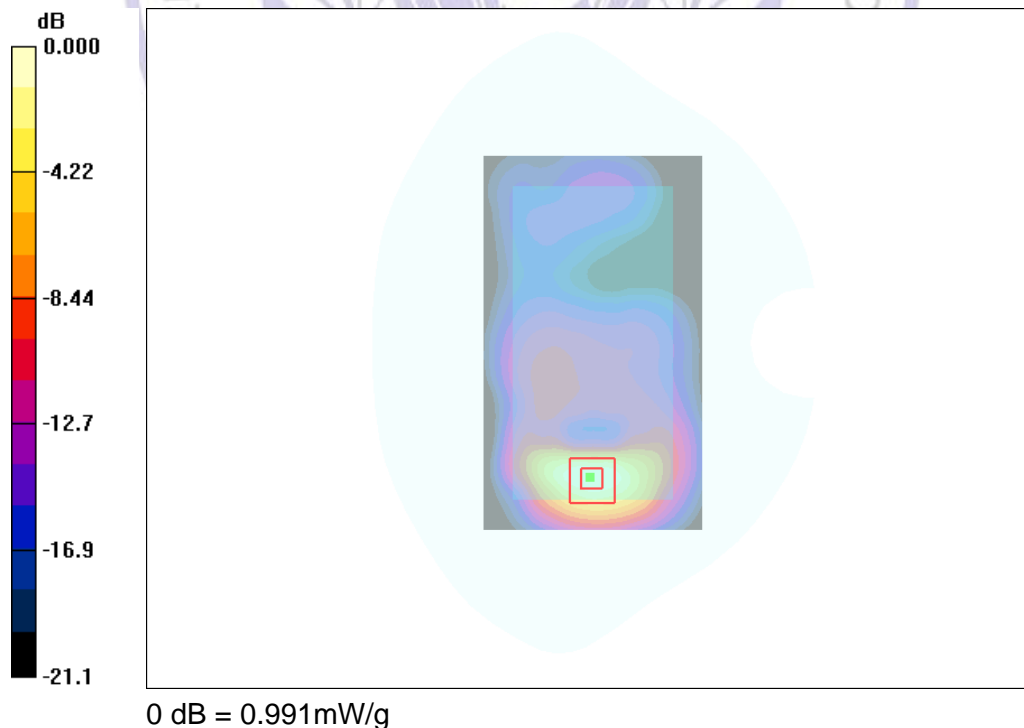


Figure 14: LTE Band II_QPSK _ Rear side_10mm_ Middle Channel

LTE Band IV_QPSK _ Rear side_10mm_ Middle Channel

Date: 2017-2-27

Communication System: LTE B4; Frequency: 1732.5 MHz; Duty Cycle: 1:1

Medium parameters used: $f = 1732.5$ MHz; $\sigma = 1.49$ mho/m; $\epsilon_r = 52.2$; $\rho = 1000$ kg/m³

Phantom section: Flat Section

DASY4 Configuration:

- Probe: ES3DV4 – SN3836; ConvF(7.64, 7.64, 7.64); Calibrated: 07/26/2016
- Sensor-Surface: 4mm (Mechanical Surface Detection)
- Electronics: DAE4 Sn1315; Calibrated: 7/26/2016
- Phantom: SAM 1; Type: SAM;
- Measurement SW: DASY52, Version 52.8 (2); SEMCAD X Version 14.6.6 (6824)

Area Scan (81x151x1): Measurement grid: dx=15mm, dy=15mm

Maximum value of SAR (interpolated) = 0.188 mW/g

Zoom Scan (5x5x7)/Cube 0: Measurement grid: dx=8mm, dy=8mm, dz=5mm

Reference Value = 4.09 V/m; Power Drift = -0.10 dB

Peak SAR (extrapolated) = 0.382 W/kg

SAR(1 g) = 0.172 mW/g; SAR(10 g) = 0.077 mW/g

Maximum value of SAR (measured) = 0.195 mW/g

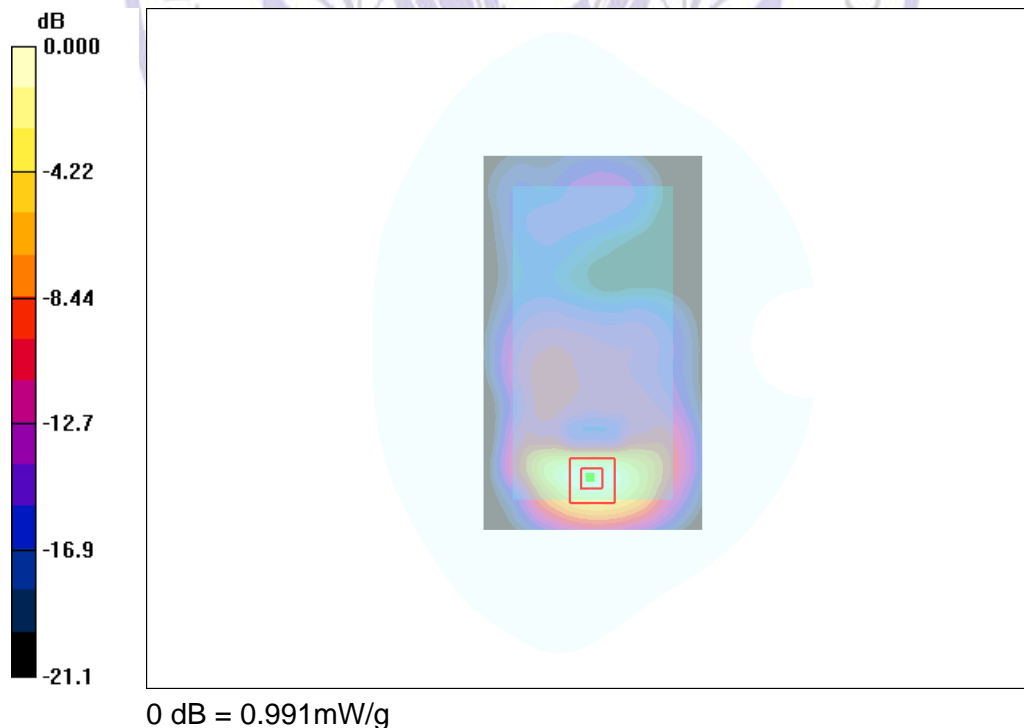


Figure 15: LTE Band IV_QPSK _ Rear side_10mm_ Middle Channel

LTE Band VII_QPSK _ Rear side_10mm_ Middle Channel

Date: 2017-3-4

Communication System: LTE B7; Frequency: 2535 MHz; Duty Cycle: 1:1

Medium parameters used: $f = 2535$ MHz; $\sigma = 1.88$ mho/m; $\epsilon_r = 50.5$; $\rho = 1000$ kg/m³

Phantom section: Flat Section

DASY4 Configuration:

- Probe: ES3DV4 – SN3836; ConvF(6.99, 6.99, 6.99); Calibrated: 07/26/2016
- Sensor-Surface: 4mm (Mechanical Surface Detection)
- Electronics: DAE4 Sn1315; Calibrated: 7/26/2016
- Phantom: SAM 1; Type: SAM;
- Measurement SW: DASY52, Version 52.8 (2); SEMCAD X Version 14.6.6 (6824)

Area Scan (81x151x1): Measurement grid: dx=15mm, dy=15mm

Maximum value of SAR (interpolated) = 0.245 mW/g

Zoom Scan (7x7x7)/Cube 0: Measurement grid: dx=5mm, dy=5mm, dz=5mm

Reference Value = 3.30 V/m; Power Drift = -0.10 dB

Peak SAR (extrapolated) = 0.516 W/kg

SAR(1 g) = 0.224 mW/g; SAR(10 g) = 0.097 mW/g

Maximum value of SAR (measured) = 0.247 mW/g

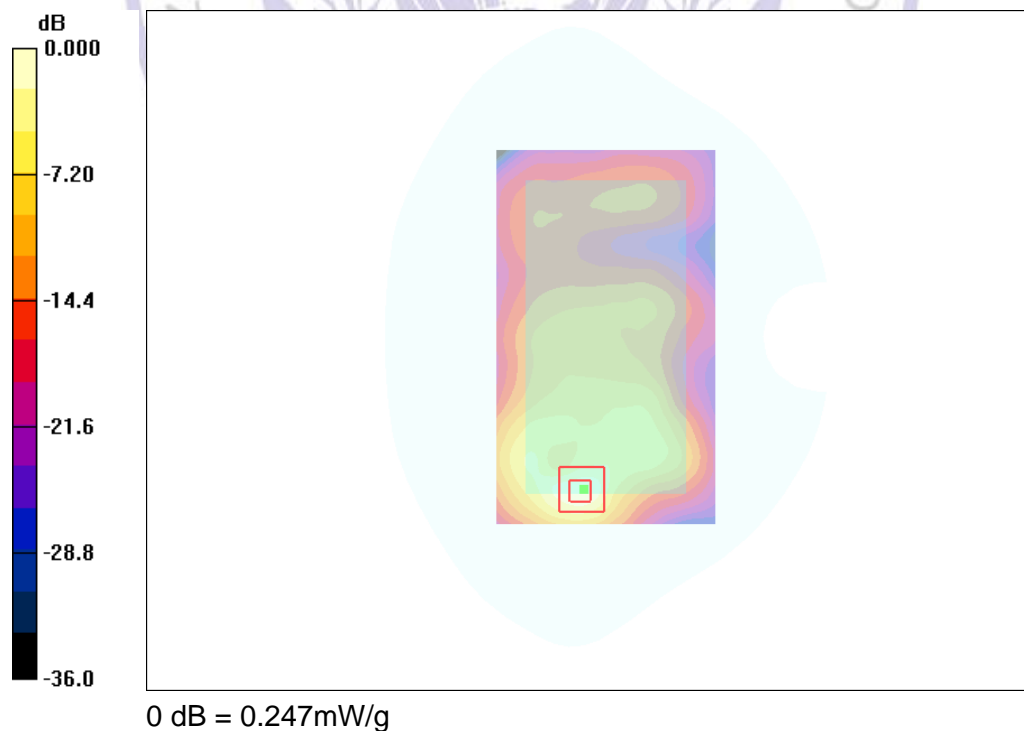


Figure 16: LTE Band VII_QPSK _ Rear side_10mm_ Middle Channel

LTE Band XII_QPSK _ Rear side_10mm_ Middle Channel

Date: 2017-2-25

Communication System: LTE B12; Frequency: 707.5 MHz;Duty Cycle: 1:1

Medium parameters used: $f = 707.5\text{MHz}$; $\sigma = 0.952\text{ mho/m}$; $\epsilon_r = 55.5$; $\rho = 1000\text{ kg/m}^3$

Phantom section: Flat Section

DASY4 Configuration:

- Probe: ES3DV4 – SN3836;ConvF(9.38, 9.38, 9.38); Calibrated: 07/26/2016
- Sensor-Surface: 4mm (Mechanical Surface Detection)
- Electronics: DAE4 Sn1315; Calibrated: 7/26/2016
- Phantom: SAM 1; Type: SAM;
- Measurement SW: DASY52, Version 52.8 (2); SEMCAD X Version 14.6.6 (6824)

Area Scan (81x151x1): Measurement grid: $dx=15\text{mm}$, $dy=15\text{mm}$

Maximum value of SAR (interpolated) = 0.642 mW/g

Zoom Scan (5x5x7)/Cube 0: Measurement grid: $dx=8\text{mm}$, $dy=8\text{mm}$, $dz=5\text{mm}$

Reference Value = 22.3 V/m ; Power Drift = -0.10 dB

Peak SAR (extrapolated) = 0.790 W/kg

SAR(1 g) = 0.594 mW/g ; SAR(10 g) = 0.360 mW/g

Maximum value of SAR (measured) = 0.629 mW/g

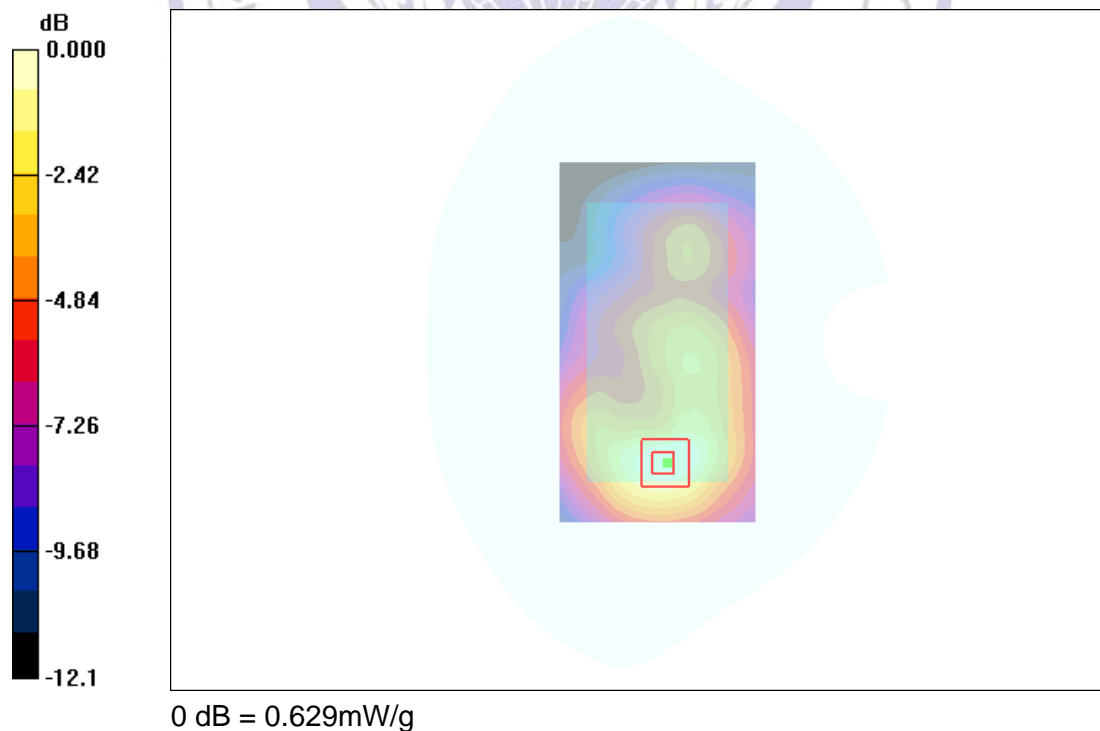


Figure 17: LTE Band XII_QPSK _ Rear side_10mm_ Middle Channel

WLAN _ Rear side_10mm_ Middle Channel

Date: 2017-3-3

Communication System: 802.11; Frequency: 2437 MHz; Duty Cycle: 1:1

Medium parameters used: $f = 2437$ MHz; $\sigma = 1.97$ mho/m; $\epsilon_r = 52.4$; $\rho = 1000$ kg/m³

Phantom section: Flat Section

DASY4 Configuration:

- Probe: ES3DV4 – SN3836; ConvF(7.20, 7.20, 7.20); Calibrated: 07/26/2016
- Sensor-Surface: 4mm (Mechanical Surface Detection)
- Electronics: DAE4 Sn1315; Calibrated: 7/26/2016
- Phantom: SAM 1; Type: SAM;
- Measurement SW: DASY52, Version 52.8 (2); SEMCAD X Version 14.6.6 (6824)

Area Scan (81x151x1): Measurement grid: $dx=15$ mm, $dy=15$ mm

Maximum value of SAR (interpolated) = 0.041 mW/g

Zoom Scan (7x7x7)/Cube 0: Measurement grid: $dx=5$ mm, $dy=5$ mm, $dz=5$ mm

Reference Value = 9.3 V/m; Power Drift = -0.03 dB

Peak SAR (extrapolated) = 0.05 W/kg

SAR(1 g) = 0.037 mW/g; SAR(10 g) = 0.012 mW/g

Maximum value of SAR (measured) = 0.042 mW/g



Figure 18: WLAN _ Rear side_10mm_ Middle Channel