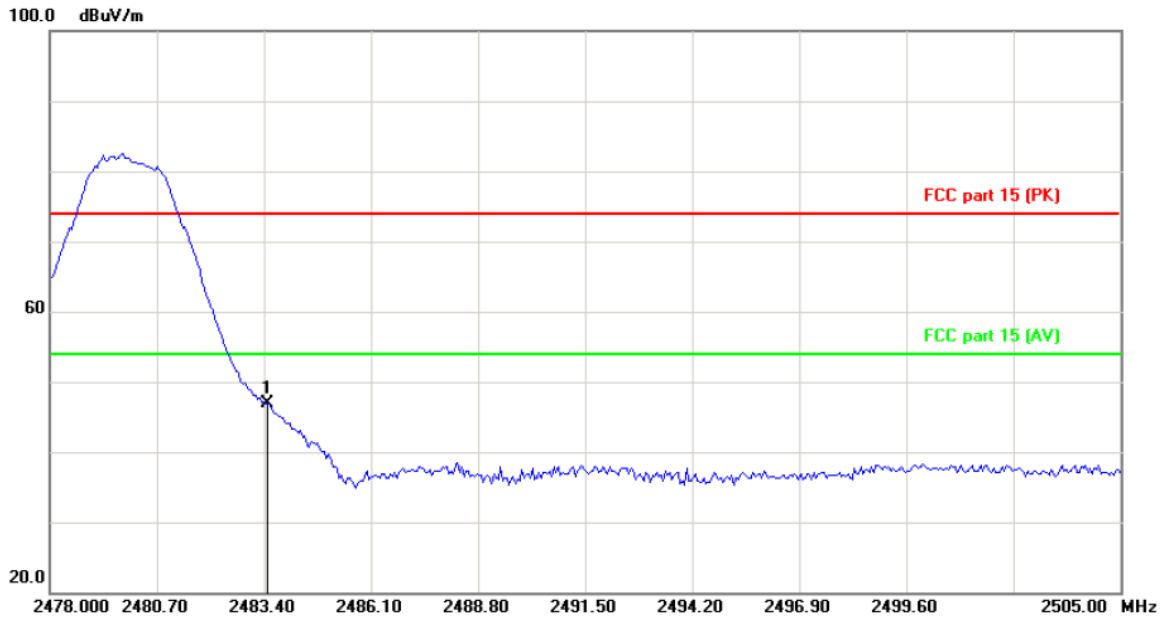


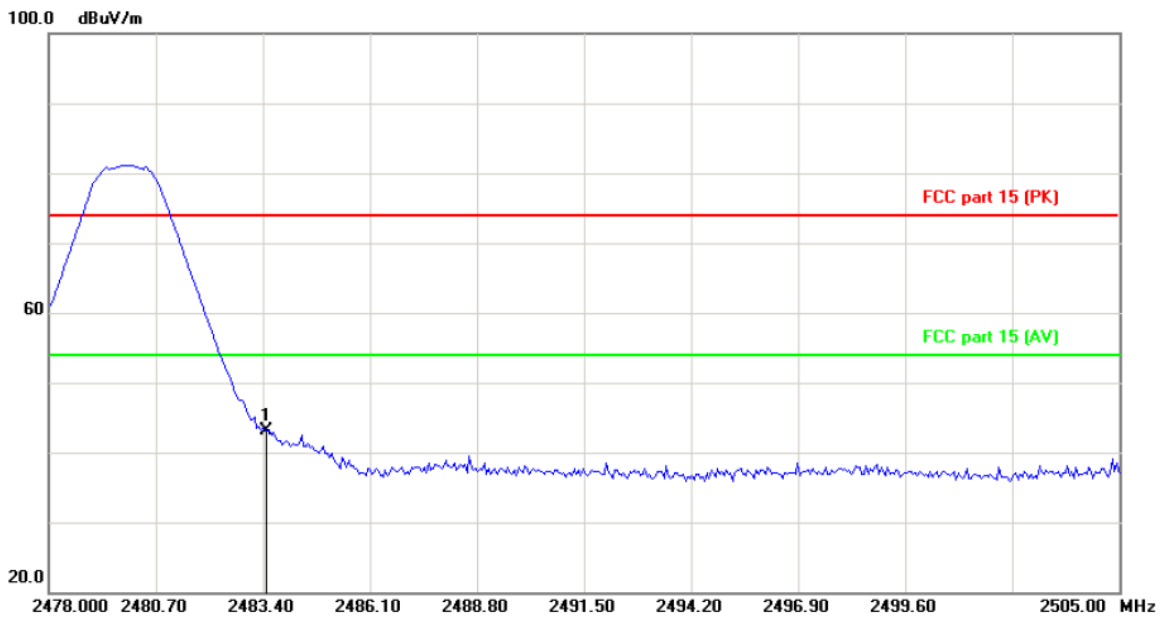
Highest channel 2480:

Horizontal:



Site: Polarization: **Horizontal** Temperature: 25
 Limit: FCC part 15 (PK) Power: Humidity: 55 %

Vertical:



Site: Polarization: **Vertical** Temperature: 25
 Limit: FCC part 15 (PK) Power: Humidity: 55 %

Frequency (MHz)	Ant. Pol. H/V	Peak (dBuV/m)	Duty cycle factor (dB/m)	AV (dBuV/m)	Peak limit (dBuV/m)	AV limit (dBuV/m)	PK Margin (dB)	AVG Margin (dB)
2483.5	H	46.85	-1.95	44.90	74	54	-27.15	-9.10
2483.5	V	43.19	-1.95	41.24	74	54	-30.81	-12.76

Note: Measurements were conducted in all two modulation (GFSK, Pi/4DQPSK), and the worst case Mode (Pi/4DQPSK) was submitted only.

Above 1GHz

Modulation Type: Pi/4DQPSK									
Low channel: 2402 MHz									
Frequency (MHz)	Ant. Pol. H/V	Peak reading (dB μ V)	AV reading (dB μ V)	Correction Factor (dB/m)	Emission Level		Peak limit (dB μ V/m)	AV limit (dB μ V/m)	Margin (dB)
					Peak (dB μ V/m)	AV (dB μ V/m)			
4804	H	45.27	---	0.66	45.93	---	74	54	-8.07
7206	H	35.51	---	9.50	45.01	---	74	54	-8.99
---	H	---	---	---	---	---	---	---	---
4804	V	44.62	---	0.66	45.28	---	74	54	-8.72
7206	V	35.08	---	9.50	44.58	---	74	54	-9.42
---	V	---	---	---	---	---	---	---	---

Middle channel: 2441 MHz									
Frequency (MHz)	Ant. Pol. H/V	Peak reading (dB μ V)	AV reading (dB μ V)	Correction Factor (dB/m)	Emission Level		Peak limit (dB μ V/m)	AV limit (dB μ V/m)	Margin (dB)
					Peak (dB μ V/m)	AV (dB μ V/m)			
4882	H	43.96	---	0.99	44.95	---	74	54	-9.05
7323	H	34.12	---	9.87	43.99	---	74	54	-10.01
---	H	---	---	---	---	---	---	---	---
4882	V	44.58	---	0.99	45.57	---	74	54	-8.43
7323	V	35.36	---	9.87	45.23	---	74	54	-8.77
---	V	---	---	---	---	---	---	---	---

High channel: 2480 MHz									
Frequency (MHz)	Ant. Pol. H/V	Peak reading (dB μ V)	AV reading (dB μ V)	Correction Factor (dB/m)	Emission Level		Peak limit (dB μ V/m)	AV limit (dB μ V/m)	Margin (dB)
					Peak (dB μ V/m)	AV (dB μ V/m)			
4960	H	46.74	---	1.33	48.07	---	74	54	-5.93
7440	H	37.31	---	10.22	47.53	---	74	54	-6.47
---	H	---	---	---	---	---	---	---	---
4960	V	47.85	---	1.33	49.18	---	74	54	-4.82
7440	V	37.44	---	10.22	47.66	---	74	54	-6.34
---	V	---	---	---	---	---	---	---	---

Note:

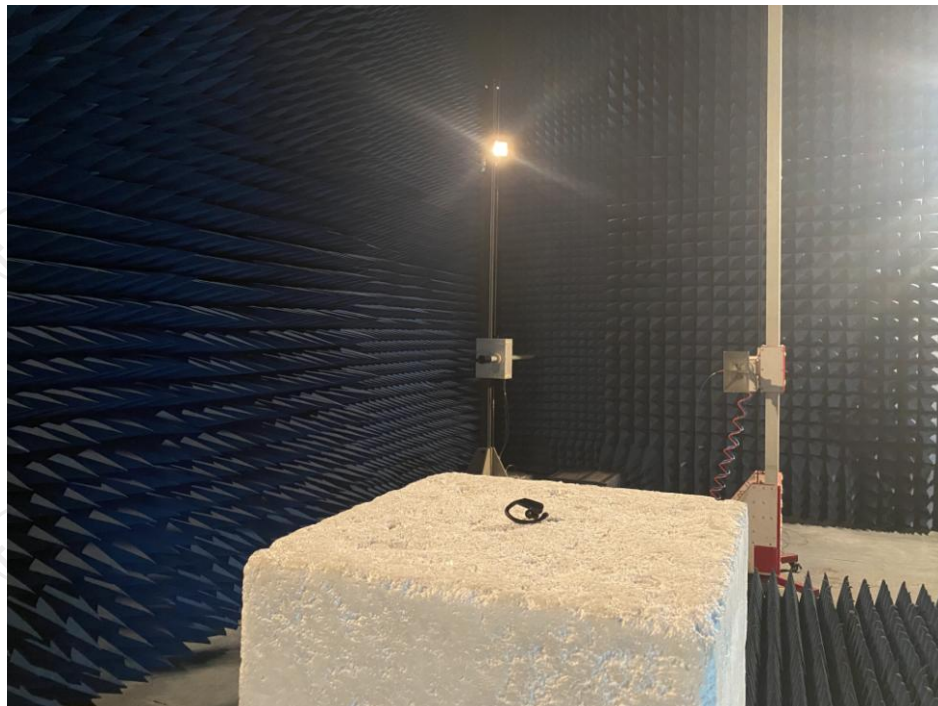
1. Emission Level=Peak Reading + Correction Factor; Correction Factor= Antenna Factor + Cable loss – Pre-amplifier
2. Margin (dB) = Emission Level (Peak) (dB μ V/m)-Average limit (dB μ V/m)
3. The emission levels of other frequencies are very lower than the limit and not show in test report.
4. Measurements were conducted from 1 GHz to the 10th harmonic of highest fundamental frequency.
5. Data of measurement shown "----" in the above table mean that the reading of emissions is attenuated more than 20 dB below the limits or the field strength is too small to be measured.
6. Measurements were conducted in all two modulation (GFSK, Pi/4DQPSK), and the worst case Mode (Pi/4DQPSK) was submitted only.
7. All the restriction bands are compliance with the limit of 15.209.

Appendix A: Photographs of Test Setup

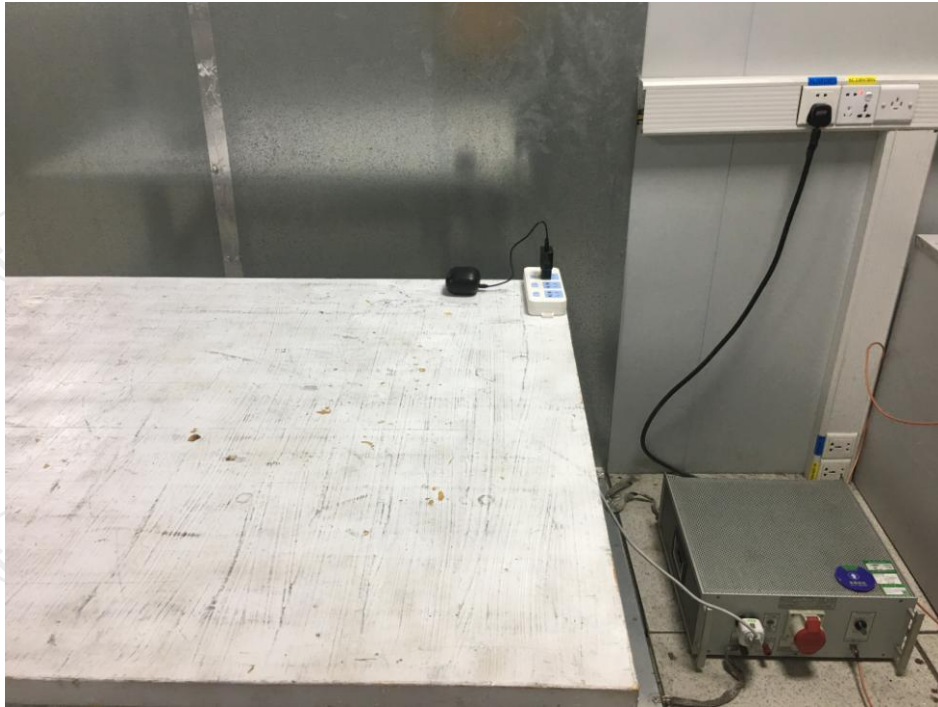
Product: tws sport earphones

Model: XO-9899

Radiated Emission



Conducted Emission



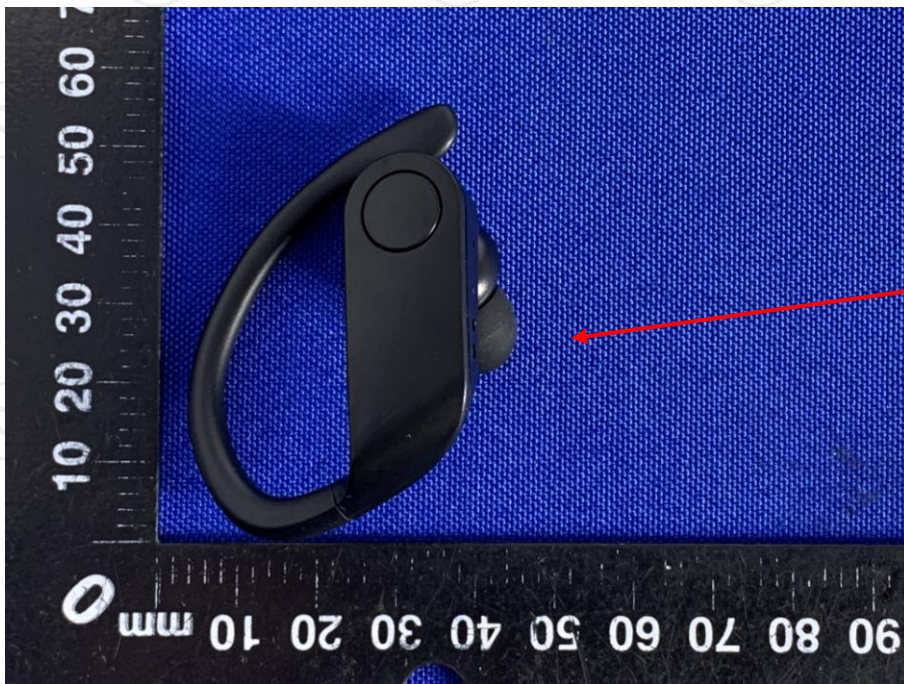
Appendix B: Photographs of EUT
Product: tws sport earphones
Model: XO-9899
External Photos





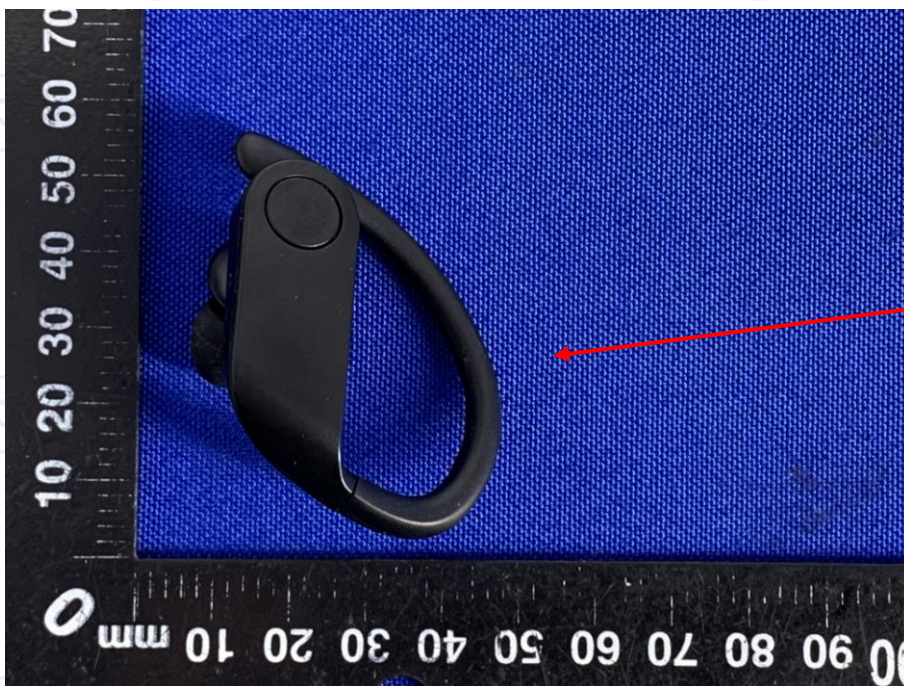










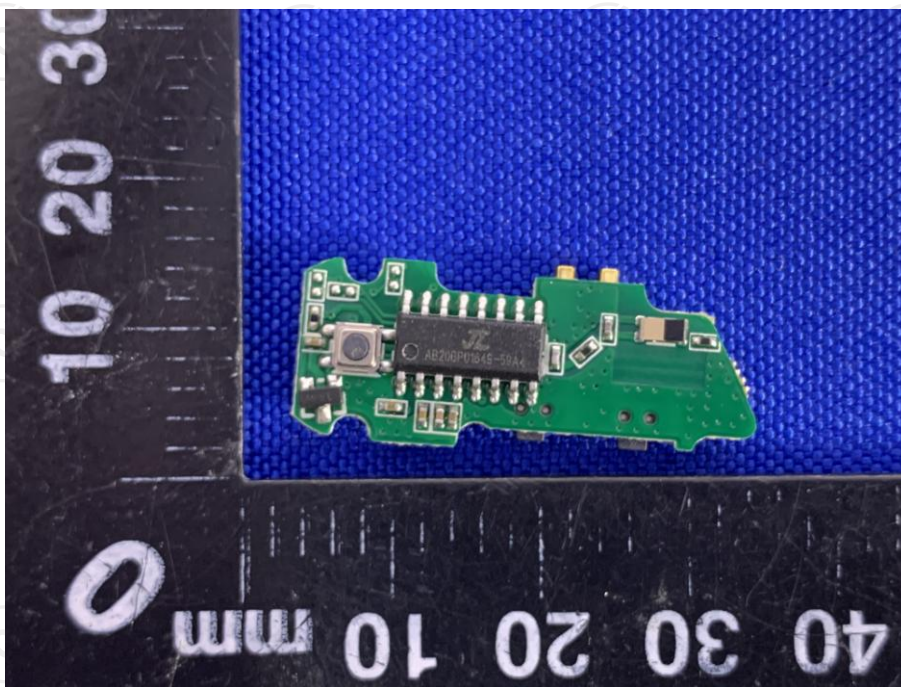
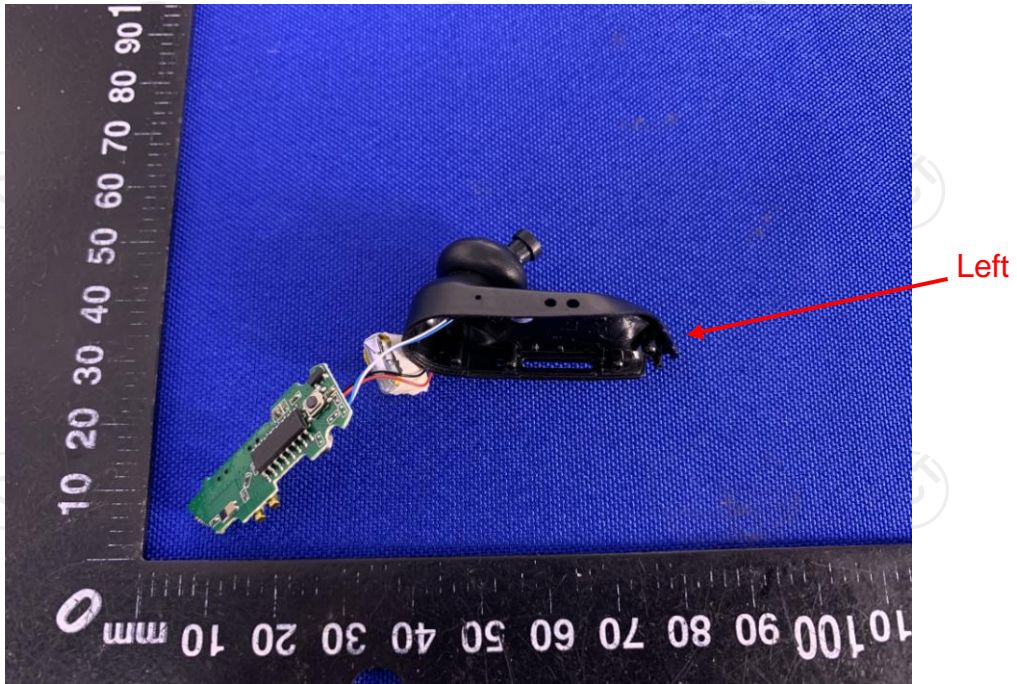


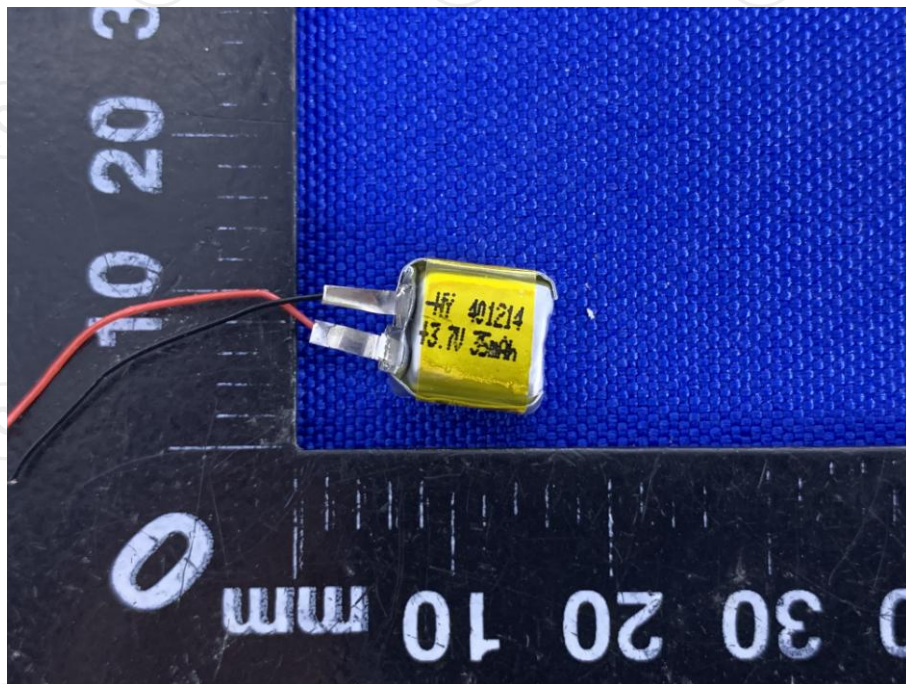
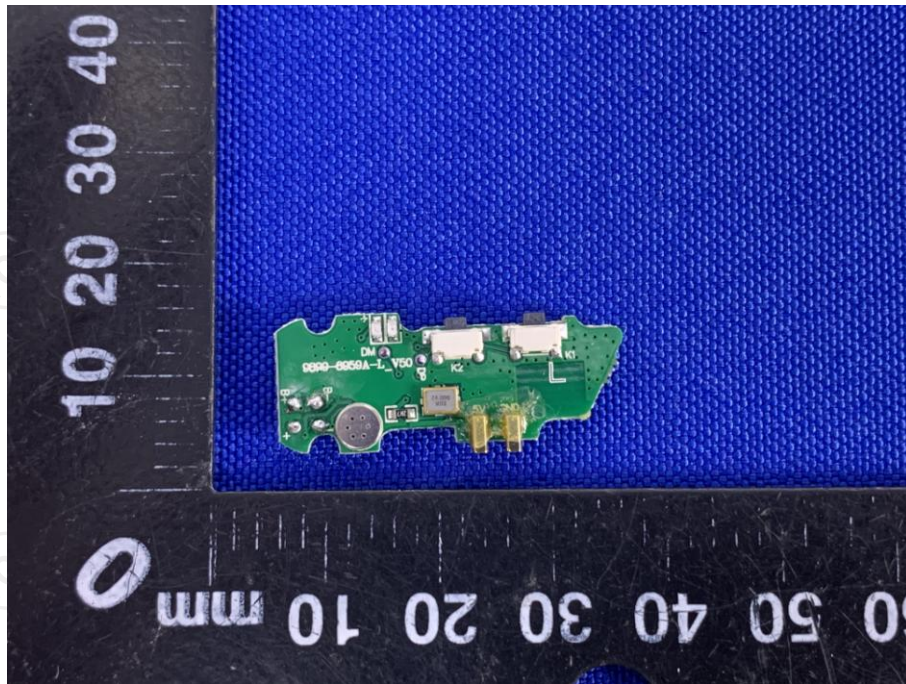


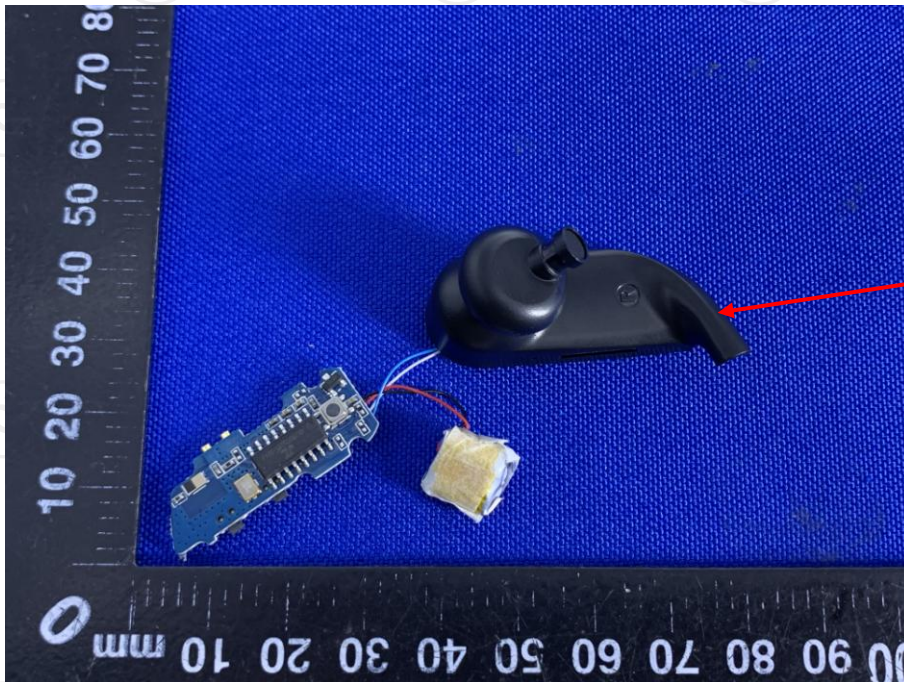
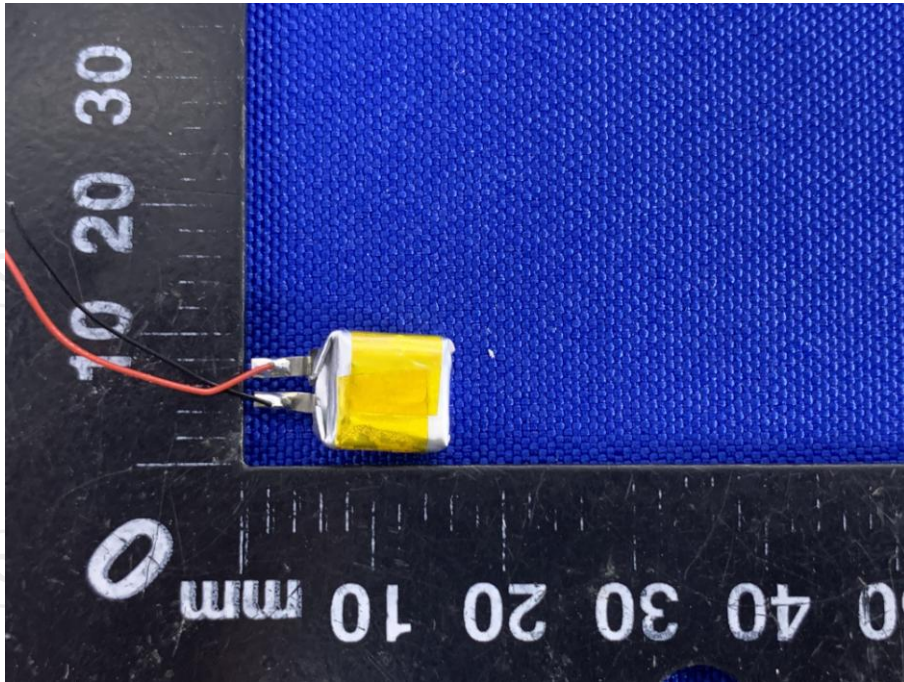


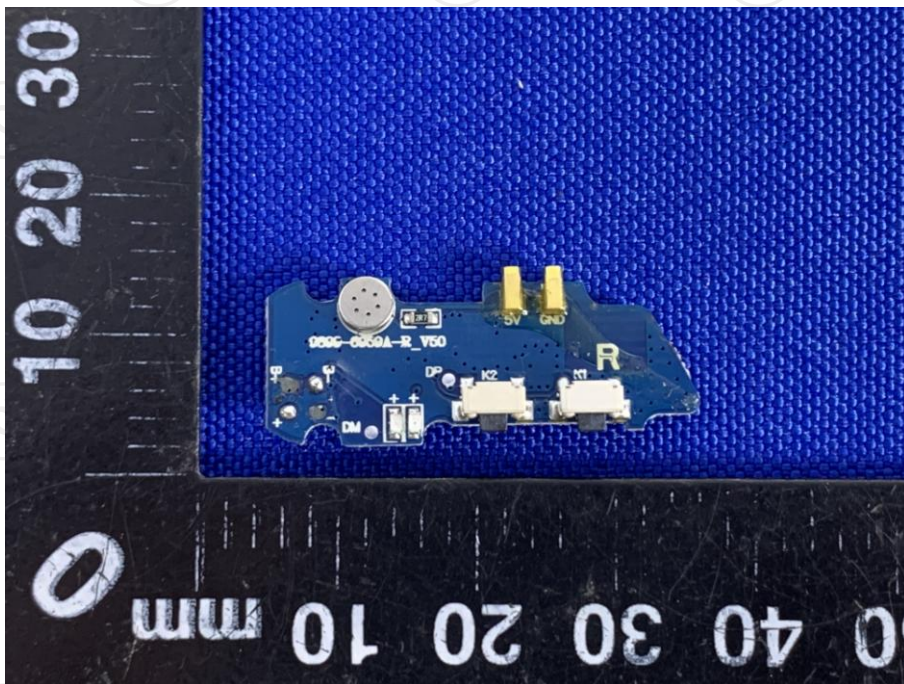
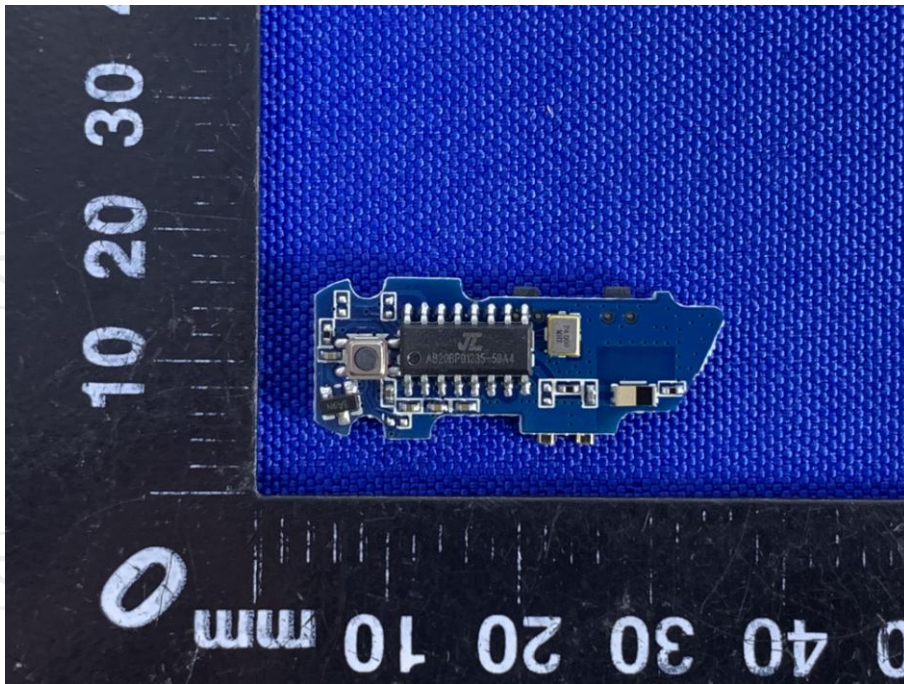


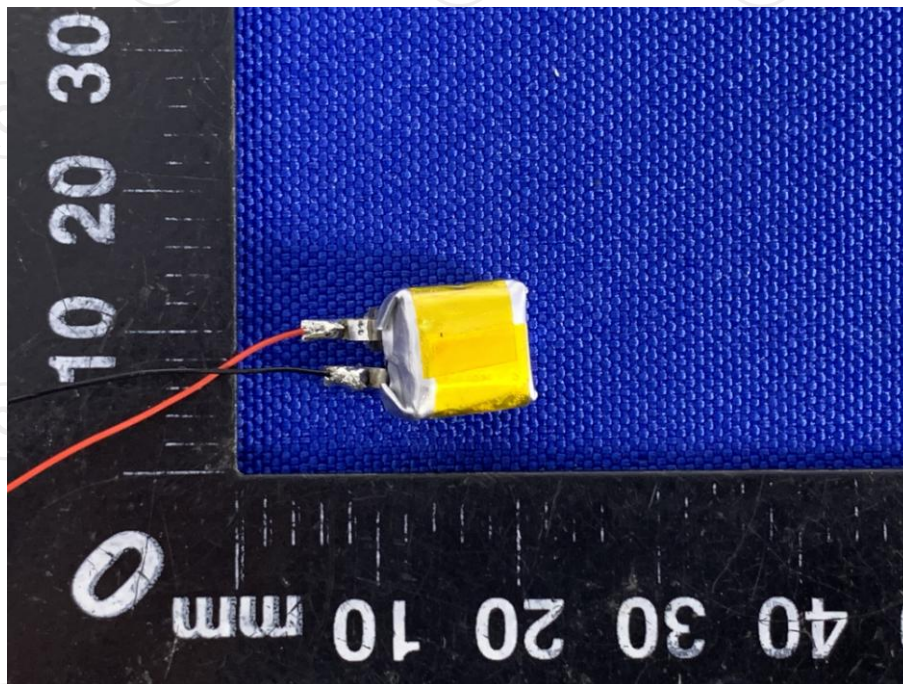
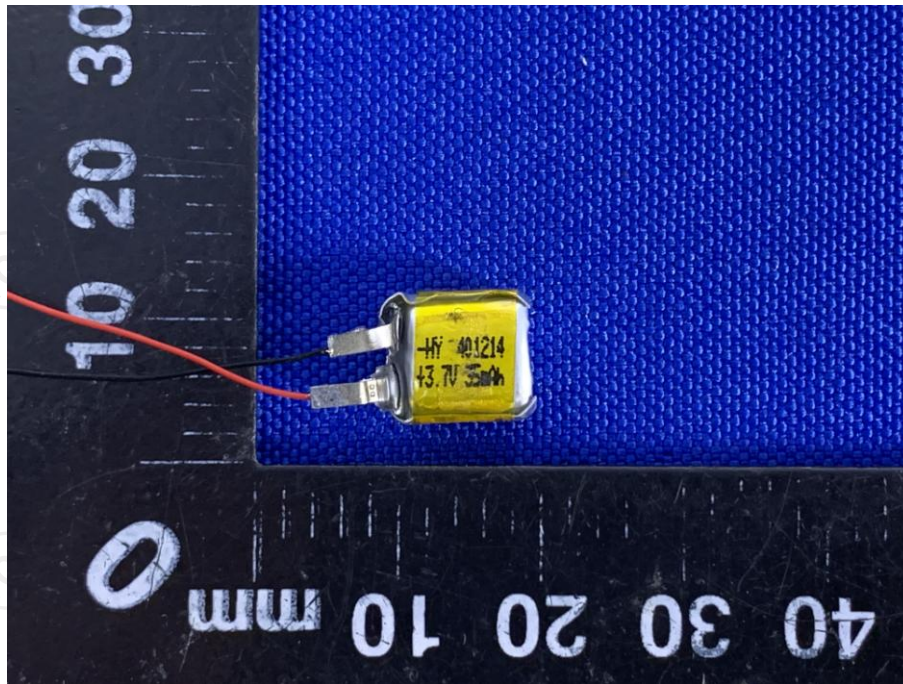
Product: tws sport earphones
Model: XO-9899
Internal Photos











*****END OF REPORT*****