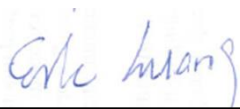


# Hearing Aid Compatibility (HAC) RF Emissions Test Report

APPLICANT : Essential Products Inc.  
EQUIPMENT : Smartphone  
BRAND NAME : Essential Products Inc  
MODEL NAME : A11  
FCC ID : 2ALBB-A11  
STANDARD : FCC 47 CFR §20.19  
ANSI C63.19-2011

We, SPORTON INTERNATIONAL INC., would like to declare that the tested sample has been evaluated in accordance with the procedures and had been in compliance with the applicable technical standards.

The test results in this report apply exclusively to the tested model / sample. Without written approval of SPORTON INTERNATIONAL INC., the test report shall not be reproduced except in full.



Reviewed by: Eric Huang / Manager



Approved by: Jones Tsai / Manager



**SPORTON INTERNATIONAL INC.**

No.52, Hwa Ya 1st Rd., Hwa Ya Technology Park, Kwei-Shan District, Taoyuan City, Taiwan (R.O.C.)



## **Table of Contents**

|  |           |
|--|-----------|
| <b>1. Attestation of Test Results .....</b>            | <b>4</b>  |
| <b>2. Administration Data .....</b>                    | <b>4</b>  |
| <b>3. Equipment Under Test Information .....</b>       | <b>5</b>  |
| 3.1 General Information .....                          | 5         |
| 3.2 Air Interface and Operating Mode .....             | 6         |
| 3.3 Applied Standards .....                            | 7         |
| <b>4. HAC RF Emission .....</b>                        | <b>7</b>  |
| <b>5. Measurement System Specification .....</b>       | <b>8</b>  |
| 5.1 Test Arch Phantom .....                            | 8         |
| 5.2 E-Field Probe System .....                         | 9         |
| E-Field Probe Specification .....                      | 9         |
| Probe Tip Description: .....                           | 9         |
| 5.3 System Hardware .....                              | 9         |
| 5.4 Data Storage and Evaluation .....                  | 10        |
| 5.5 Test Equipment List .....                          | 11        |
| <b>6. Measurement System Validation .....</b>          | <b>12</b> |
| 6.1 Purpose of System Performance Check .....          | 12        |
| 6.2 System Setup .....                                 | 12        |
| 6.3 Verification Results .....                         | 13        |
| <b>7. RF Emissions Test Procedure .....</b>            | <b>14</b> |
| <b>8. Modulation Interference Factor .....</b>         | <b>17</b> |
| <b>9. Low-power Exemption .....</b>                    | <b>20</b> |
| <b>10. Conducted RF Output Power (Unit: dBm) .....</b> | <b>21</b> |
| <b>11. HAC RF Emission Test Results .....</b>          | <b>22</b> |
| <b>12. Uncertainty Assessment .....</b>                | <b>23</b> |
| <b>13. References .....</b>                            | <b>25</b> |

**Appendix A. Plots of System Performance Check**

**Appendix B. Plots of RF Emission Measurement**

**Appendix C. DASY Calibration Certificate**

**Appendix D. Test Setup Photos**



## Revision History

| REPORT NO. | VERSION | DESCRIPTION             | ISSUED DATE   |
|------------|---------|-------------------------|---------------|
| HA740822A  | Rev. 01 | Initial issue of report | Jun. 16, 2017 |
|            |         |                         |               |
|            |         |                         |               |

**1. Attestation of Test Results**

|                   |  |
|-------------------|--|
| Applicant Name    | Essential Products Inc.                  |
| Equipment Name    | Smartphone                               |
| Brand Name        | Essential Products Inc                   |
| Model Name        | A11                                      |
| FCC ID            | 2ALBB-A11                                |
| IMEI              | 001064000162235                          |
| HW Version        | DVT                                      |
| EUT Stage         | Identical Prototype                      |
| Exposure category | General Population/Uncontrolled Exposure |
| HAC Rating        | M4                                       |
| Date Tested       | 2017/5/21                                |
| Test Result       | Pass                                     |

This device is compliance with HAC limits specified in guidelines FCC 47 CFR §20.19 and ANSI Standard ANSI C63.19.

**2. Administration Data**

| Testing Laboratory |  |
|--------------------|--|
| Test Site          | SPORTON INTERNATIONAL INC.   |
| Test Site Location | No.52, Hwa Ya 1st Rd., Hwa Ya Technology Park, Kwei-Shan District, Taoyuan City, Taiwan (R.O.C.)<br>TEL: +886-3-327-3456<br>FAX: +886-3-328-4978 |
| Test Site No.      | Sporton Site No. :<br><b>SAR04-HY</b>  |
| Applicant          |  |
| Company Name       | Essential Products Inc.  |
| Address            | 380 Portage Ave., Palo Alto, CA 94306  |
| Manufacturer       |  |
| Company Name       | FIH Mobile Limited   |
| Address            | No.4, Mingsheng St., Tu-Cheng Dist., New Taipei City 23679, Taiwan   |



### **3. Equipment Under Test Information**

#### **3.1 General Information**

| <b>Product Feature &amp; Specification</b> |  |
|--|--|
| <b>Frequency Band</b>                      | GSM850: 824.2 MHz ~ 848.8 MHz<br>GSM1900: 1850.2 MHz ~ 1909.8 MHz<br>WCDMA Band II: 1852.4 MHz ~ 1907.6 MHz<br>WCDMA Band IV: 1712.4 MHz ~ 1752.6 MHz<br>WCDMA Band V: 826.4 MHz ~ 846.6 MHz<br>CDMA2000 BC0: 824.7 MHz ~ 848.31 MHz<br>CDMA 2000 BC1: 1851.25 MHz ~ 1908.75 MHz<br>CDMA 2000 BC10: 817.9 MHz ~ 823.1 MHz<br>LTE Band 2: 1850.7 MHz ~ 1909.3 MHz<br>LTE Band 4: 1710.7 MHz ~ 1754.3 MHz<br>LTE Band 5: 824.7 MHz ~ 848.3 MHz<br>LTE Band 7: 2502.5 MHz ~ 2567.5 MHz<br>LTE Band 12: 699.7 MHz ~ 715.3 MHz<br>LTE Band 13: 779.5 MHz ~ 784.5 MHz<br>LTE Band 17: 706.5 MHz ~ 713.5 MHz<br>LTE Band 25: 1850.7 MHz ~ 1914.3 MHz<br>LTE Band 26: 814.7 MHz ~ 848.3 MHz<br>LTE Band 30: 2307.5 MHz ~ 2312.5 MHz<br>LTE Band 38: 2572.5 MHz ~ 2617.5 MHz<br>LTE Band 41: 2498.5 MHz ~ 2687.5 MHz<br>LTE Band 66: 1710.7 MHz ~ 1779.3 MHz<br>WLAN 2.4GHz Band: 2412 MHz ~ 2462 MHz<br>WLAN 5.2GHz Band: 5180 MHz ~ 5240 MHz<br>WLAN 5.3GHz Band: 5260 MHz ~ 5320 MHz<br>WLAN 5.5GHz Band: 5500 MHz ~ 5700 MHz<br>WLAN 5.8GHz Band: 5745 MHz ~ 5825 MHz<br>Bluetooth: 2402 MHz ~ 2480 MHz<br>NFC: 13.56 MHz |
| <b>Mode</b>                                | GSM/GPRS/EGPRS<br>AMR / RMC 12.2Kbps<br>HSDPA<br>HSUPA<br>DC-HSDPA<br>CDMA2000 : 1xRTT/1xEv-Do(Rel.0)/1xEv-Do(Rev.A)<br>LTE: QPSK, 16QAM, 64QAM<br>802.11a/b/g/n/ac HT20/HT40/VHT20/VHT40/VHT80<br>Bluetooth BR/EDR/LE<br>NFC:ASK  |



### 3.2 Air Interface and Operating Mode

| Air Interface | Band MHz  | Type | C63.19 Tested      | Simultaneous Transmitter | OTT | Power Reduction |
|---------------|-----------|------|--------------------|--------------------------|-----|-----------------|
| GSM           | 850       | VO   | Yes                | WLAN, BT                 | NA  | No              |
|               | 1900      |      |                    | WLAN, BT                 | NA  | No              |
|               | GPRS/EDGE | DT   | No                 | WLAN, BT                 | Yes | No              |
| WCDMA         | 850       | VO   | Yes <sup>(1)</sup> | WLAN, BT                 | NA  | No              |
|               | 1750      |      |                    | WLAN, BT                 | NA  | No              |
|               | 1900      |      |                    | WLAN, BT                 | NA  | No              |
|               | HSPA      | DT   | No                 | WLAN, BT                 | Yes | No              |
| CDMA          | BC0       | VO   | Yes                | WLAN, BT                 | NA  | No              |
|               | BC1       |      |                    | WLAN, BT                 | NA  | No              |
|               | BC10      |      |                    | WLAN, BT                 | NA  | No              |
|               | EVDO      | DT   | No                 | WLAN, BT                 | Yes | No              |
| FDD LTE       | Band 2    | VD   | Yes <sup>(1)</sup> | WLAN, BT                 | Yes | No              |
|               | Band 4    |      |                    | WLAN, BT                 |     | No              |
|               | Band 5    |      |                    | WLAN, BT                 |     | No              |
|               | Band 7    |      |                    | WLAN, BT                 |     | No              |
|               | Band 12   |      |                    | WLAN, BT                 |     | No              |
|               | Band 13   |      |                    | WLAN, BT                 |     | No              |
|               | Band 17   |      |                    | WLAN, BT                 |     | No              |
|               | Band 25   |      |                    | WLAN, BT                 |     | No              |
|               | Band 26   |      |                    | WLAN, BT                 |     | No              |
|               | Band 30   |      |                    | WLAN, BT                 |     | No              |
|               | Band 66   |      |                    | WLAN, BT                 |     | No              |
| TDD LTE       | Band 38   | VD   | Yes                | WLAN, BT                 | Yes | No              |
|               | Band 41   |      |                    | WLAN, BT                 |     | No              |
| WLAN          | 2450      | DT   | No                 | GSM,CDMA,WCDMA,LTE       | Yes | No              |
|               | 5200      |      |                    | GSM,CDMA,WCDMA,LTE       |     | No              |
|               | 5300      |      |                    | GSM,CDMA,WCDMA,LTE       |     | No              |
|               | 5500      |      |                    | GSM,CDMA,WCDMA,LTE       |     | No              |
|               | 5800      |      |                    | GSM,CDMA,WCDMA,LTE       |     | No              |
| BT            | 2450      | DT   | No                 | GSM,CDMA,WCDMA,LTE       | NA  | No              |

VO=CMRS Voice Service

DT=Digital Transport

VD=CMRS IP Voice Service and Digital Transport

Remark:

- WCDMA and FDD LTE is exempted from testing by low power exemption that its average antenna input power plus its MIF is  $\leq 17$  dBm, and is rated as M4

**3.3 Applied Standards**

- FCC CFR47 Part 20.19
- ANSI C63.19 2011-version
- FCC KDB 285076 D01 HAC Guidance v04r01
- FCC KDB 285076 D02 T Coil testing for CMRS IP v02

**4. HAC RF Emission**

FCC wireless hearing aid compatibility rules ensure that consumers with hearing loss are able to access wireless communications services through a wide selection of handsets without experiencing disabling radio frequency (RF) interference or other technical obstacles.

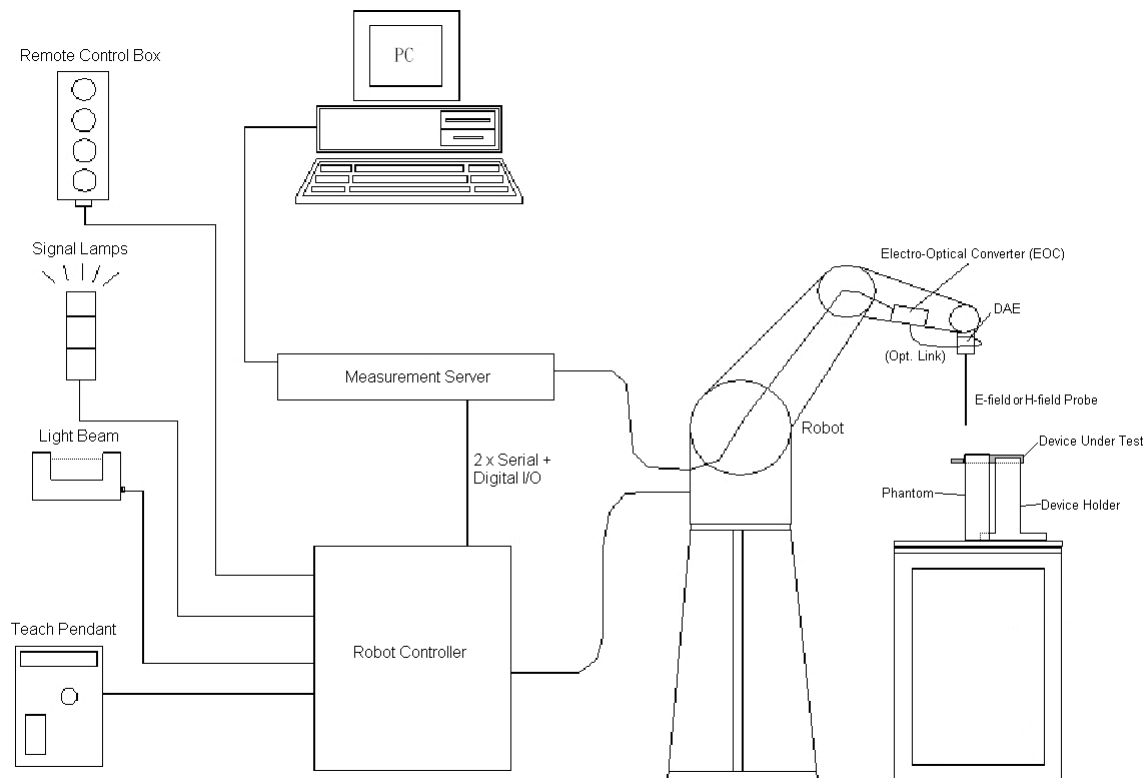
To define and measure the hearing aid compatibility of handsets, in CFR47 part 20.19 ANSI C63.19 is referenced. A handset is considered hearing aid-compatible for acoustic coupling if it meets a rating of at least M3 under ANSI C63.19, and A handset is considered hearing aid compatible for inductive coupling if it meets a rating of at least T3.

According to ANSI C63.19 2011 version, for acoustic coupling, the RF electric field emissions of wireless communication devices should be measured and rated according to the emission level as below.

| Emission Categories | E-field emissions |                   |
|---------------------|-------------------|-------------------|
|                     | <960Mhz           | >960Mhz           |
| M1                  | 50 to 55 dB (V/m) | 40 to 45 dB (V/m) |
| M2                  | 45 to 50 dB (V/m) | 35 to 40 dB (V/m) |
| M3                  | 40 to 45 dB (V/m) | 30 to 35 dB (V/m) |
| M4                  | <40 dB (V/m)      | <30 dB (V/m)      |

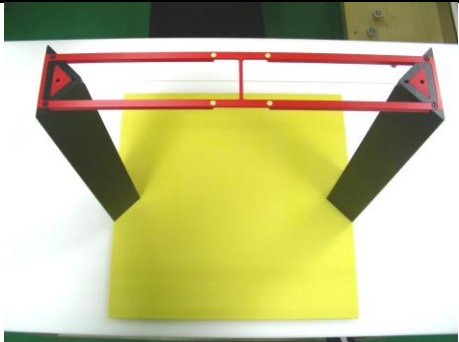
**Table 4.1 Telephone near-field categories in linear units**

## 5. Measurement System Specification



**Fig 5.1 SPEAG DASY5 System Configurations**

### 5.1 Test Arch Phantom

|                       |  |  |
|-----------------------|--|--|
| <b>Construction :</b> | Enables easy and well defined positioning of the phone and validation dipoles as well as simple teaching of the robot. |  |
| <b>Dimensions :</b>   | 370x 370 x 370 mm  |  |

**Fig 5.8 Photo of Arch Phantom**



## 5.2 E-Field Probe System

### E-Field Probe Specification

<ER3DV6>

|                      |  |
|----------------------|--|
| <b>Construction</b>  | One dipole parallel, two dipoles normal to probe axis Built-in shielding against static charges                              |
| <b>Calibration</b>   | In air from 100 MHz to 3.0 GHz<br>(absolute accuracy $\pm 6.0\%$ , $k=2$ )   |
| <b>Frequency</b>     | 100 MHz to 6 GHz;<br>Linearity: $\pm 2.0$ dB (100 MHz to 3 GHz)  |
| <b>Directivity</b>   | $\pm 0.2$ dB in air (rotation around probe axis)<br>$\pm 0.4$ dB in air (rotation normal to probe axis)                      |
| <b>Dynamic Range</b> | 2 V/m to 1000 V/m<br>(M3 or better device readings fall well below diode compression point)                                  |
| <b>Linearity</b>     | $\pm 0.2$ dB   |
| <b>Dimensions</b>    | Overall length: 330 mm (Tip: 16 mm)<br>Tip diameter: 8 mm (Body: 12 mm)<br>Distance from probe tip to dipole centers: 2.5 mm |



**Fig 5.2 Photo of E-field Probe**

### Probe Tip Description:

HAC field measurements take place in the close near field with high gradients. Increasing the measuring distance from the source will generally decrease the measured field values (in case of the validation dipole approx. 10% per mm).

## 5.3 System Hardware

| DAE   |
|---|
| The data acquisition electronics (DAE) consists of a highly sensitive electrometer-grade preamplifier with auto-zeroing, a channel and gain-switching multiplexer, a fast 16 bit AD-converter and a command decoder and control logic unit. |
| Robot   |
| The SPEAG DASY system uses the high precision robots (DASY5: TX90XL) type from Stäubli SA (France). For the 6-axis controller system, the robot controller version (DASY5: CS8c) from Stäubli is used.                                      |

## **5.4 Data Storage and Evaluation**

The DASY software stores the assessed data from the data acquisition electronics as raw data (in microvolt readings from the probe sensors), together with all the necessary software parameters for the data evaluation (probe calibration data, and device frequency and modulation data) in measurement files.

|                            |                           |   |
|----------------------------|---------------------------|---|
| <b>Probe parameters :</b>  | - Sensitivity             | Norm <sub>i</sub> , a <sub>i0</sub> , a <sub>i1</sub> , a <sub>i2</sub> |
|                            | - Conversion factor       | ConvF <sub>i</sub>  |
|                            | - Diode compression point | dcp <sub>i</sub>  |
| <b>Device parameters :</b> | - Frequency               | f   |
|                            | - Crest factor            | cf  |
| <b>Media parameters :</b>  | - Conductivity            | σ   |
|                            | - Density                 | ρ   |

The formula for each channel can be given as :

$$V_i = U_i + U_i^2 \cdot \frac{cf}{dcp_i}$$

with  $V_i$  = compensated signal of channel i, (i = x, y, z)  
 $U_i$  = input signal of channel i, (i = x, y, z)  
 cf = crest factor of exciting field (DASY parameter)  
 dcp<sub>i</sub> = diode compression point (DASY parameter)

From the compensated input signals, the primary field data for each channel can be evaluated :

$$\text{E-field Probes : } E_i = \sqrt{\frac{V_i}{\text{Norm}_i \cdot \text{ConvF}}}$$

with  $V_i$  = compensated signal of channel i, (i = x, y, z)  
 Norm<sub>i</sub> = sensor sensitivity of channel i, (i = x, y, z),  $\mu\text{V}/(\text{V/m})^2$  for E-field Probes  
 ConvF = sensitivity enhancement in solution  
 f = carrier frequency [GHz]  
 E<sub>i</sub> = electric field strength of channel i in V/m

The RSS value of the field components gives the total field strength (Hermitian magnitude) :

$$E_{\text{tot}} = \sqrt{E_x^2 + E_y^2 + E_z^2}$$

The primary field data are used to calculate the derived field units.

**5.5 Test Equipment List**

| Manufacturer  | Name of Equipment            | Type/Model | Serial Number | Calibration   |               |
|---------------|------------------------------|------------|---------------|---------------|---------------|
|               |                              |            |               | Last Cal.     | Due Date      |
| SPEAG         | 835MHz Calibration Dipole    | CD835V3    | 1045          | Sep. 27, 2016 | Sep. 26, 2017 |
| SPEAG         | 1880MHz Calibration Dipole   | CD1880V3   | 1038          | Sep. 27, 2016 | Sep. 26, 2017 |
| SPEAG         | 2600Mhz Calibration Dipole   | CD2600V3   | 1010          | Nov. 17, 2016 | Nov. 16, 2017 |
| SPEAG         | Data Acquisition Electronics | DAE4       | 853           | Jul. 11, 2016 | Jul. 10, 2017 |
| SPEAG         | Isotropic E-Field Probe      | ER3DV6     | 2358          | Jan. 19, 2017 | Jan. 18, 2018 |
| TECPEL        | Thermometer                  | UL-A03     | TM225-2       | Mar. 21, 2017 | Mar. 20, 2018 |
| SPEAG         | Test Arch Phantom            | N/A        | N/A           | NCR           | NCR           |
| SPEAG         | Phone Positioner             | N/A        | N/A           | NCR           | NCR           |
| Anritsu       | Power Meter                  | ML2495A    | 1438002       | Dec. 06, 2016 | Dec. 05, 2017 |
| Anritsu       | Power Sensor                 | MA2411B    | 1339195       | Dec. 06, 2016 | Dec. 05, 2017 |
| Anritsu       | Signal Generator             | MG3710A    | 6201502524    | Dec. 09, 2016 | Dec. 08, 2017 |
| R&S           | Base Station                 | CMU200     | 117997        | Aug. 19, 2016 | Aug. 18, 2017 |
| R&S           | Base Station                 | CMW500     | 149637        | Jul. 27, 2016 | Jul. 26, 2017 |
| ATM           | Dual Directional Coupler     | C122H-10   | P610410z-02   | NCR           | NCR           |
| Woken         | Attenuator                   | WK0602-XX  | N/A           | NCR           | NCR           |
| Mini-Circuits | Power Amplifier              | ZVE-8G+    | D120604       | Mar. 09, 2017 | Mar. 08, 2018 |
| Mini-Circuits | Power Amplifier              | ZHL-42W+   | QA1344002     | Mar. 09, 2017 | Mar. 08, 2018 |

**Table 5.1 Test Equipment List****Note:**

1. NCR: "No-Calibration Required"

## 6. Measurement System Validation

Each DASY system is equipped with one or more system validation kits. These units, together with the predefined measurement procedures within the DASY software, enable the user to conduct the system performance check and system validation. System validation kit includes a dipole, tripod holder to fix it underneath the test Arch and a corresponding distance holder.

### 6.1 Purpose of System Performance Check

The system performance check verifies that the system operates within its specifications. System and operator errors can be detected and corrected. It is recommended that the system performance check be performed prior to any usage of the system in order to guarantee reproducible results. The system performance check uses normal HAC measurements in a simplified setup with a well characterized source. This setup was selected to give a high sensitivity to all parameters that might fail or vary over time. The system check does not intend to replace the calibration of the components, but indicates situations where the system uncertainty is exceeded due to drift or failure.

### 6.2 System Setup

1. In the simplified setup for system evaluation, the EUT is replaced by a calibrated dipole and the power source is replaced by a continuous wave which comes from a signal generator.
2. The center point of the probe element(s) is 15mm from the closest surface of the dipole elements.
3. The calibrated dipole must be placed beneath the arch phantom. The equipment setup is shown below:

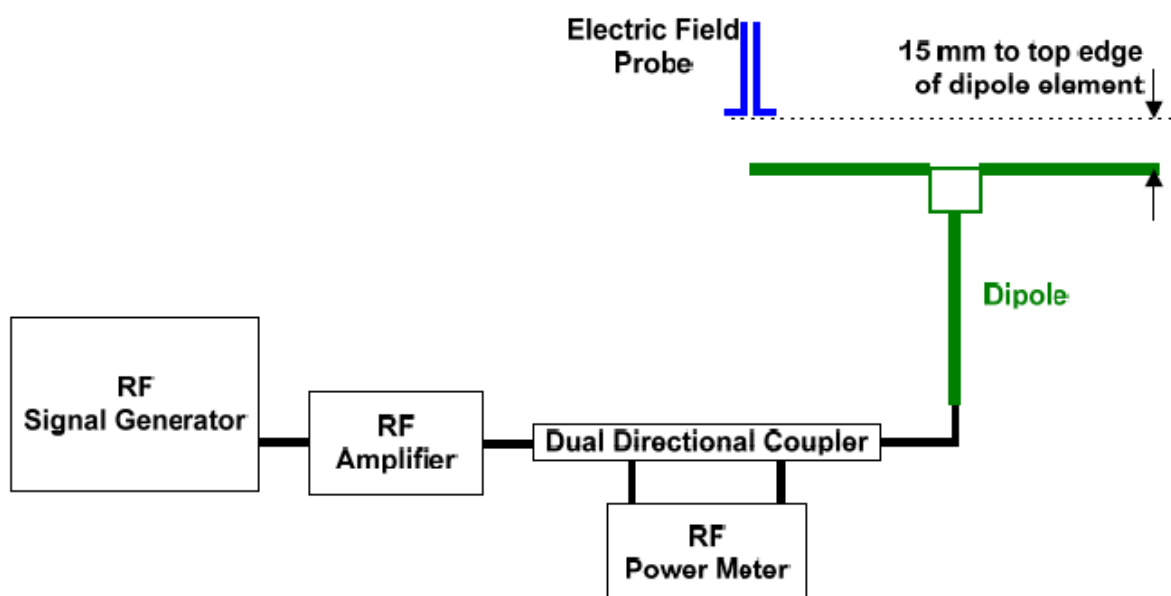
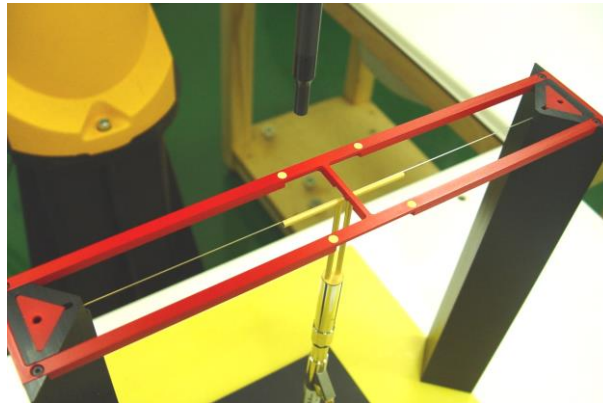


Fig. 6.1 System Validation Setup

The output power on dipole port must be calibrated to 20dBm (100mW) before dipole is connected.



**Fig 7.2 Dipole Setup**

### **6.3 Verification Results**

Comparing to the original E-field value provided by SPEAG, the verification data should be within its specification of 25 %. Table 6.1 shows the target value and measured value. The table below indicates the system performance check can meet the variation criterion and the plots can be referred to appendix A of this report.

| Frequency (MHz) | Input Power (dBm) | Target Value (V/m) | E-Field above high end (V/m) | E-Field above low end (V/m) | Average Value (V/m) | Deviation (%) | Date         |
|-----------------|-------------------|--------------------|------------------------------|-----------------------------|---------------------|---------------|--------------|
| 835             | 20                | 106.1              | 110.9                        | 101.5                       | 106.2               | 0.09          | May 21, 2017 |
| 1880            | 20                | 94.3               | 91.57                        | 93.44                       | 92.505              | -1.90         | May 21, 2017 |
| 2600            | 20                | 89.8               | 90.92                        | 97.79                       | 94.355              | 5.07          | May 21, 2017 |

**Table 6.1 Test Results of System Validation**

**Note: Deviation = ((Average E-field Value) - (Target value)) / (Target value) \* 100%**



## **7. RF Emissions Test Procedure**

Referenced from ANSI C63.19 -2011 section 5.5.1

- a) Confirm the proper operation of the field probe, probe measurement system, and other instrumentation and the positioning system.
- b) Position the WD in its intended test position.
- c) Set the WD to transmit a fixed and repeatable combination of signal power and modulation characteristic that is representative of the worst case (highest interference potential) encountered in normal use. Transiently occurring start-up, changeover, or termination conditions, or other operations likely to occur less than 1% of the time during normal operation, may be excluded from consideration.
- d) The center sub-grid shall be centered on the T-Coil mode perpendicular measurement point or the acoustic output, as appropriate. Locate the field probe at the initial test position in the 50 mm by 50 mm grid, which is contained in the measurement plane, refer to illustrated in Figure 8.2. If the field alignment method is used, align the probe for maximum field reception.
- e) Record the reading at the output of the measurement system.
- f) Scan the entire 50 mm by 50 mm region in equality spaced increments and record the reading at each measurement point, The distance between measurement points shall be sufficient to assure the identification of the maximum reading.
- g) Identify the five contiguous sub-grids around the center sub-grid whose maximum reading is the lowest of all available choices. This eliminates the three sub-grids with the maximum readings. Thus, the six areas to be used to determine the WD's highest emissions are identified.
- h) Identify the maximum reading within the non-excluded sub-grids identified in step g).
- i) *Indirect measurement method*  
The RF audio interference level in dB (V/m) is obtained by adding the MIF (in dB) to the maximum steady-state rms field-strength reading, in dB (V/m)
- j) Compare this RF audio interference level with the categories in ANSI C63.19-2011 clause 8 and record the resulting WD category rating.
- k) For the T-Coil mode M-rating assessment, determine whether the chosen perpendicular measurement point is contained in an included sub-grid of the first scan. If so, then a second scan is not necessary. The first scan and resultant category rating may be used for the T-Coil mode M rating.

Otherwise, repeat step a) through step i), with the grid shifted so that it is centered on the perpendicular measurement point. Record the WD category rating.

### Test Instructions

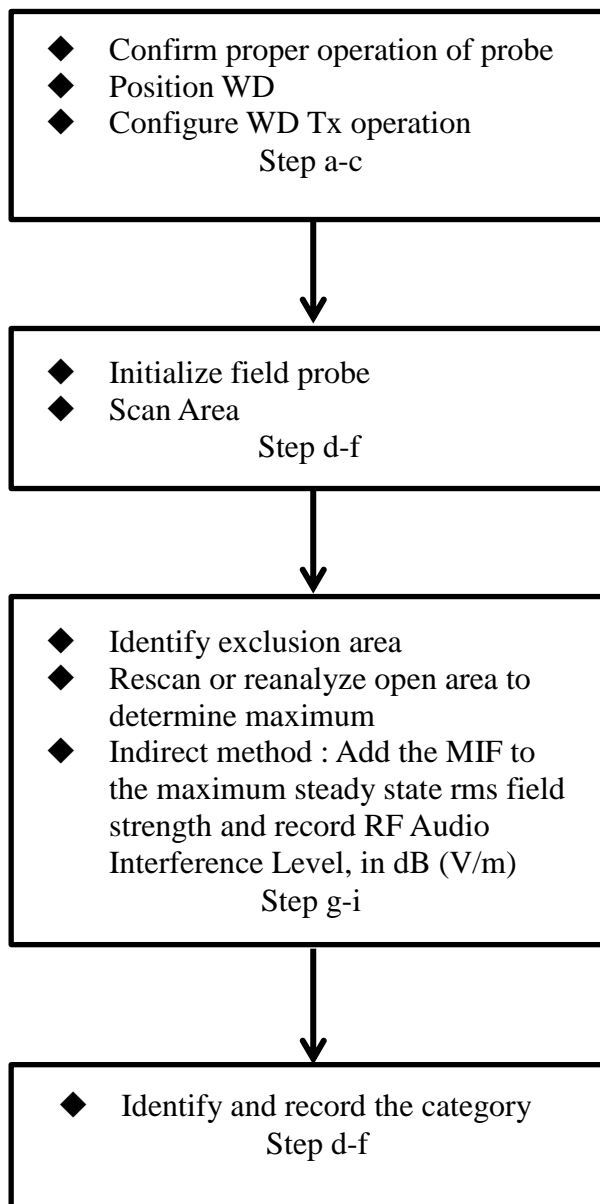


Fig 8.1 Flow Chart of HAC RF Emission



Fig 8.2 EUT reference and plane for HAC RF emission measurements

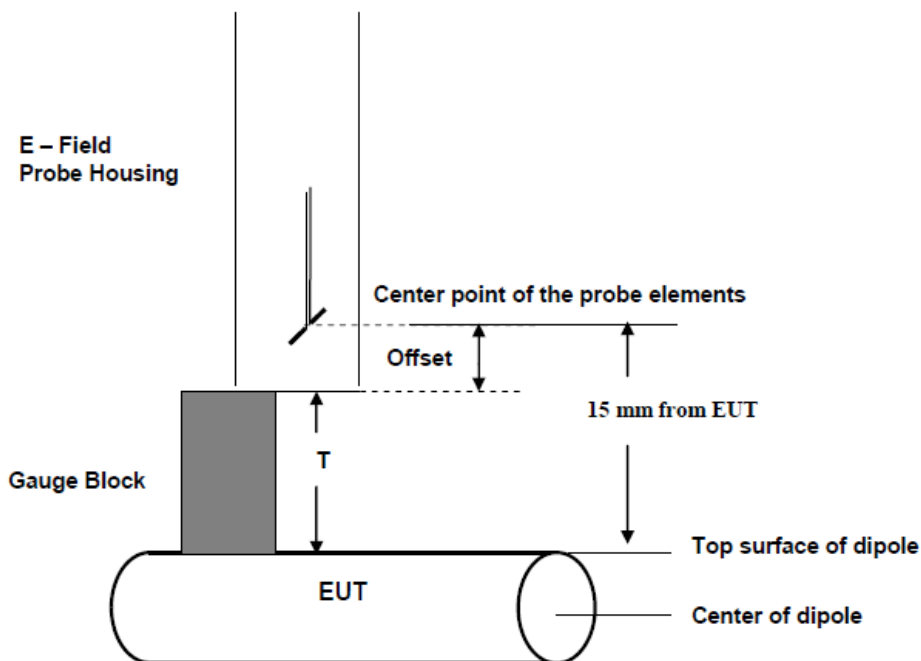


Fig. 8.3 Gauge block with E-field probe





## **8. Modulation Interference Factor**

The HAC Standard ANSI C63.19-2011 defines a new scaling using the Modulation Interference Factor (MIF).

For any specific fixed and repeatable modulated signal, a modulation interference factor (MIF, expressed in dB) may be developed that relates its interference potential to its steady-state rms signal level or average power level. This factor is a function only of the audio-frequency amplitude modulation characteristics of the signal and is the same for field-strength and conducted power measurements. It is important to emphasize that the MIF is valid only for a specific repeatable audio-frequency amplitude modulation characteristic. Any change in modulation characteristic requires determination and application of a new MIF

The Modulation Interference factor (MIF, in dB) is added to the measured average E-field (in dBV/m) and converts it to the RF Audio Interference level (in dBV/m). This level considers the audible amplitude modulation components in the RF E-field. CW fields without amplitude modulation are assumed to not interfere with the hearing aid electronics. Modulations without time slots and low fluctuations at low frequencies have low MIF values, TDMA modulations with narrow transmission and repetition rates of few 100 Hz have high MIF values and give similar classifications as ANSI C63.19-2011.

ER3D, EF3D and EU2D E-field probes have a bandwidth <10 kHz and can therefore not evaluate the RF envelope in the full audio band. DASY52 is therefore using the indirect measurement method according to ANSI C63.19-2011 which is the primary method. These near field probes read the averaged E-field measurement. Especially for the new high peak-to-average (PAR) signal types, the probes shall be linearized by PMR calibration in order to not overestimate the field reading. Probe Modulation Response (PMR) calibration linearizes the probe response over its dynamic range for specific modulations which are characterized by their UID and result in an uncertainty specified in the probe calibration certificate. The MIF is characteristic for a given waveform envelope and can be used as a constant conversion factor if the probe has been PMR calibrated.

The evaluation method for the MIF is defined in ANSI C63.19-2011 section D.7. An RMS demodulated RF signal is fed to a spectral filter (similar to an A weighting filter) and forwarded to a temporal filter acting as a quasi-peak detector. The averaged output of these filtering is scaled to a 1 kHz 80% AM signal as reference. MIF measurement requires additional instrumentation and is not well suited for evaluation by the end user with reasonable uncertainty. It may alternatively be determined through analysis and simulation, because it is constant and characteristic for a communication signal. DASY52 uses well-defined signals for PMR calibration. The MIF of these signals has been determined by simulation and it is automatically applied.



MIF values applied in this test report were provided by the HAC equipment provider, SPEAG, and the values are listed below

| UID   | Communication System Name                    | MIF(dB) |
|-------|--|---------|
| 10021 | GSM-FDD(TDMA,GMSK)                           | 3.63    |
| 10011 | UMTS-FDD(WCDMA)                              | -27.23  |
| 10039 | CDMA2000 (1xRTT, RC1)                        | -19.77  |
| 10081 | CDMA2000 (1xRTT, RC3)                        | -19.71  |
| 10295 | CDMA2000 (1xRTT, RC1 SO3, 1/8th Rate 25 fr.) | 3.26    |
| 10100 | LTE-FDD(SC-FDMA,100%RB,20MHz,QPSK)           | -23.48  |
| 10101 | LTE-FDD(SC-FDMA,100%RB,20MHz,16-QAM)         | -17.86  |
| 10108 | LTE-FDD(SC-FDMA,100%RB,10MHz,QPSK)           | -21.57  |
| 10109 | LTE-FDD(SC-FDMA,100%RB,10MHz,16-QAM)         | -16.87  |
| 10110 | LTE-FDD(SC-FDMA,100%RB,5MHz,QPSK)            | -23.39  |
| 10111 | LTE-FDD(SC-FDMA,100%RB,5MHz,16-QAM)          | -16.35  |
| 10139 | LTE-FDD(SC-FDMA,100%RB,15MHz,QPSK)           | -18.25  |
| 10140 | LTE-FDD(SC-FDMA,100%RB,15MHz,16-QAM)         | -19.37  |
| 10142 | LTE-FDD(SC-FDMA,100%RB,3MHz,QPSK)            | -22.36  |
| 10143 | LTE-FDD(SC-FDMA,100%RB,3MHz,16-QAM)          | -14.75  |
| 10145 | LTE-FDD(SC-FDMA,100%RB,1.4MHz,QPSK)          | -17.39  |
| 10146 | LTE-FDD(SC-FDMA,100%RB,1.4MHz,16-QAM)        | -13.6   |
| 10148 | LTE-FDD(SC-FDMA,50%RB,20MHz,QPSK)            | -18.28  |
| 10149 | LTE-FDD(SC-FDMA,50%RB,20MHz,16-QAM)          | -16.87  |
| 10154 | LTE-FDD(SC-FDMA,50%RB,10MHz,QPSK)            | -23.42  |
| 10155 | LTE-FDD(SC-FDMA,50%RB,10MHz,16-QAM)          | -16.36  |
| 10156 | LTE-FDD(SC-FDMA,50%RB,5MHz,QPSK)             | -21.71  |
| 10157 | LTE-FDD(SC-FDMA,50%RB,5MHz,16-QAM)           | -15.78  |
| 10160 | LTE-FDD(SC-FDMA,50%RB,15MHz,QPSK)            | -17.95  |
| 10161 | LTE-FDD(SC-FDMA,50%RB,15MHz,16-QAM)          | -17.54  |
| 10163 | LTE-FDD(SC-FDMA,50%RB,3MHz,QPSK)             | -19.99  |
| 10164 | LTE-FDD(SC-FDMA,50%RB,3MHz,16-QAM)           | -14.41  |
| 10166 | LTE-FDD(SC-FDMA,50%RB,1.4MHz,QPSK)           | -18.1   |
| 10167 | LTE-FDD(SC-FDMA,50%RB,1.4MHz,16-QAM)         | -12.15  |
| 10169 | LTE-FDD(SC-FDMA,1RB,20MHz,QPSK)              | -15.63  |
| 10170 | LTE-FDD(SC-FDMA,1RB,20MHz,16-QAM)            | -9.76   |
| 10175 | LTE-FDD(SC-FDMA,1RB,10MHz,QPSK)              | -15.63  |
| 10176 | LTE-FDD(SC-FDMA,1RB,10MHz,16-QAM)            | -9.76   |
| 10177 | LTE-FDD(SC-FDMA,1RB,5MHz,QPSK)               | -15.63  |
| 10178 | LTE-FDD(SC-FDMA,1RB,5MHz,16-QAM)             | -9.76   |
| 10181 | LTE-FDD(SC-FDMA,1RB,15MHz,QPSK)              | -15.63  |
| 10182 | LTE-FDD(SC-FDMA,1RB,15MHz,16-QAM)            | -9.76   |
| 10184 | LTE-FDD(SC-FDMA,1RB,3MHz,QPSK)               | -15.62  |
| 10185 | LTE-FDD(SC-FDMA,1RB,3MHz,16-QAM)             | -9.76   |
| 10187 | LTE-FDD(SC-FDMA,1RB,1.4MHz,QPSK)             | -15.62  |
| 10188 | LTE-FDD(SC-FDMA,1RB,1.4MHz,16-QAM)           | -9.76   |
| 10103 | LTE-TDD (SC-FDMA, 100% RB, 20 MHz, QPSK)     | -1.64   |
| 10104 | LTE-TDD (SC-FDMA, 100% RB, 20 MHz, 16-QAM)   | -1.66   |
| 10105 | LTE-TDD (SC-FDMA, 100% RB, 20 MHz, 64-QAM)   | -1.64   |
| 10151 | LTE-TDD (SC-FDMA, 50% RB, 20 MHz, QPSK)      | -1.64   |
| 10152 | LTE-TDD (SC-FDMA, 50% RB, 20 MHz, 16-QAM)    | -1.66   |
| 10153 | LTE-TDD (SC-FDMA, 50% RB, 20 MHz, 64-QAM)    | -1.66   |
| 10172 | LTE-TDD (SC-FDMA, 1 RB, 20 MHz, QPSK)        | -1.62   |
| 10173 | LTE-TDD (SC-FDMA, 1 RB, 20 MHz, 16-QAM)      | -1.44   |
| 10174 | LTE-TDD (SC-FDMA, 1 RB, 20 MHz, 64-QAM)      | -1.54   |
| 10226 | LTE-TDD (SC-FDMA, 1 RB, 1.4 MHz, 16-QAM)     | -1.44   |
| 10227 | LTE-TDD (SC-FDMA, 1 RB, 1.4 MHz, 64-QAM)     | -1.54   |
| 10228 | LTE-TDD (SC-FDMA, 1 RB, 1.4 MHz, QPSK)       | -1.62   |
| 10226 | LTE-TDD (SC-FDMA, 1 RB, 1.4 MHz, 16-QAM)     | -1.44   |
| 10227 | LTE-TDD (SC-FDMA, 1 RB, 1.4 MHz, 64-QAM)     | -1.54   |
| 10228 | LTE-TDD (SC-FDMA, 1 RB, 1.4 MHz, QPSK)       | -1.62   |



| UID   | Communication System Name                   | MIF(dB) |
|-------|---|---------|
| 10226 | LTE-TDD (SC-FDMA, 1 RB, 1.4 MHz, 16-QAM)    | -1.44   |
| 10227 | LTE-TDD (SC-FDMA, 1 RB, 1.4 MHz, 64-QAM)    | -1.54   |
| 10228 | LTE-TDD (SC-FDMA, 1 RB, 1.4 MHz, QPSK)      | -1.62   |
| 10229 | LTE-TDD (SC-FDMA, 1 RB, 3 MHz, 16-QAM)      | -1.44   |
| 10230 | LTE-TDD (SC-FDMA, 1 RB, 3 MHz, 64-QAM)      | -1.54   |
| 10231 | LTE-TDD (SC-FDMA, 1 RB, 3 MHz, QPSK)        | -1.62   |
| 10232 | LTE-TDD (SC-FDMA, 1 RB, 5 MHz, 16-QAM)      | -1.44   |
| 10233 | LTE-TDD (SC-FDMA, 1 RB, 5 MHz, 64-QAM)      | -1.54   |
| 10234 | LTE-TDD (SC-FDMA, 1 RB, 5 MHz, QPSK)        | -1.62   |
| 10235 | LTE-TDD (SC-FDMA, 1 RB, 10 MHz, 16-QAM)     | -1.44   |
| 10236 | LTE-TDD (SC-FDMA, 1 RB, 10 MHz, 64-QAM)     | -1.54   |
| 10237 | LTE-TDD (SC-FDMA, 1 RB, 10 MHz, QPSK)       | -1.62   |
| 10238 | LTE-TDD (SC-FDMA, 1 RB, 15 MHz, 16-QAM)     | -1.44   |
| 10239 | LTE-TDD (SC-FDMA, 1 RB, 15 MHz, 64-QAM)     | -1.54   |
| 10240 | LTE-TDD (SC-FDMA, 1 RB, 15 MHz, QPSK)       | -1.62   |
| 10241 | LTE-TDD (SC-FDMA, 50% RB, 1.4 MHz, 16-QAM)  | -1.58   |
| 10242 | LTE-TDD (SC-FDMA, 50% RB, 1.4 MHz, 64-QAM)  | -1.57   |
| 10243 | LTE-TDD (SC-FDMA, 50% RB, 1.4 MHz, QPSK)    | -1.65   |
| 10244 | LTE-TDD (SC-FDMA, 50% RB, 3 MHz, 16-QAM)    | -1.65   |
| 10245 | LTE-TDD (SC-FDMA, 50% RB, 3 MHz, 64-QAM)    | -1.68   |
| 10246 | LTE-TDD (SC-FDMA, 50% RB, 3 MHz, QPSK)      | -1.65   |
| 10247 | LTE-TDD (SC-FDMA, 50% RB, 5 MHz, 16-QAM)    | -1.67   |
| 10248 | LTE-TDD (SC-FDMA, 50% RB, 5 MHz, 64-QAM)    | -1.66   |
| 10249 | LTE-TDD (SC-FDMA, 50% RB, 5 MHz, QPSK)      | -1.64   |
| 10250 | LTE-TDD (SC-FDMA, 50% RB, 10 MHz, 16-QAM)   | -1.65   |
| 10251 | LTE-TDD (SC-FDMA, 50% RB, 10 MHz, 64-QAM)   | -1.67   |
| 10252 | LTE-TDD (SC-FDMA, 50% RB, 10 MHz, QPSK)     | -1.64   |
| 10253 | LTE-TDD (SC-FDMA, 50% RB, 15 MHz, 16-QAM)   | -1.67   |
| 10254 | LTE-TDD (SC-FDMA, 50% RB, 15 MHz, 64-QAM)   | -1.67   |
| 10255 | LTE-TDD (SC-FDMA, 50% RB, 15 MHz, QPSK)     | -1.64   |
| 10256 | LTE-TDD (SC-FDMA, 100% RB, 1.4 MHz, 16-QAM) | -1.65   |
| 10257 | LTE-TDD (SC-FDMA, 100% RB, 1.4 MHz, 64-QAM) | -1.64   |
| 10258 | LTE-TDD (SC-FDMA, 100% RB, 1.4 MHz, QPSK)   | -1.65   |
| 10259 | LTE-TDD (SC-FDMA, 100% RB, 3 MHz, 16-QAM)   | -1.65   |
| 10260 | LTE-TDD (SC-FDMA, 100% RB, 3 MHz, 64-QAM)   | -1.65   |
| 10261 | LTE-TDD (SC-FDMA, 100% RB, 3 MHz, QPSK)     | -1.64   |
| 10262 | LTE-TDD (SC-FDMA, 100% RB, 5 MHz, 16-QAM)   | -1.65   |
| 10263 | LTE-TDD (SC-FDMA, 100% RB, 5 MHz, 64-QAM)   | -1.67   |
| 10264 | LTE-TDD (SC-FDMA, 100% RB, 5 MHz, QPSK)     | -1.65   |
| 10265 | LTE-TDD (SC-FDMA, 100% RB, 10 MHz, 16-QAM)  | -1.66   |
| 10266 | LTE-TDD (SC-FDMA, 100% RB, 10 MHz, 64-QAM)  | -1.66   |
| 10267 | LTE-TDD (SC-FDMA, 100% RB, 10 MHz, QPSK)    | -1.64   |
| 10268 | LTE-TDD (SC-FDMA, 100% RB, 15 MHz, 16-QAM)  | -1.67   |
| 10269 | LTE-TDD (SC-FDMA, 100% RB, 15 MHz, 64-QAM)  | -1.69   |
| 10270 | LTE-TDD (SC-FDMA, 100% RB, 15 MHz, QPSK)    | -1.65   |

The MIF measurement uncertainty is estimated as follows, declared by HAC equipment provider SPEAG, for modulation frequencies from slotted waveforms with fundamental frequency and at least 2 harmonics within 10 kHz:

- i) 0.2 dB for MIF: -7 to +5 dB,
- ii) 0.5 dB for MIF: -13 to +11 dB
- iii) 1 dB for MIF: > -20 dB

## 9. Low-power Exemption

### <Max Tune-up Limit>

| Mode  |         | Average Power (dBm) |
|-------|---------|---------------------|
| GSM   | GSM850  | 33.50               |
|       | GSM1900 | 30.00               |
| WCDMA | Band II | 25.00               |
|       | Band IV | 25.00               |
|       | Band V  | 25.00               |
| CDMA  | BC 0    | 25.00               |
|       | BC 1    | 25.00               |
|       | BC 10   | 25.00               |
| LTE   | Band 2  | 24.50               |
|       | Band 4  | 24.50               |
|       | Band 5  | 24.50               |
|       | Band 7  | 25.00               |
|       | Band 12 | 25.00               |
|       | Band 13 | 25.00               |
|       | Band 17 | 25.00               |
|       | Band 25 | 24.50               |
|       | Band 26 | 25.00               |
|       | Band 30 | 25.00               |
|       | Band 38 | 25.00               |
|       | Band 41 | 26.00               |
|       | Band 66 | 24.50               |

### <Low Power Exemption>

| Air Interface         | Max Average Antenna Input Power (dBm) | Worst Case MIF (dB) | Power + MIF(dB) | C63.19 test required |
|-----------------------|---------------------------------------|---------------------|-----------------|----------------------|
| GSM                   | 33.50                                 | 3.63                | 37.13           | Yes                  |
| WCDMA                 | 25.00                                 | -27.23              | -2.23           | No                   |
| CDMA Full Frame Rate  | 25.00                                 | -19.71              | 5.29            | No                   |
| CDMA 1/8th Frame Rate | 25.00                                 | 3.26                | 28.26           | Yes                  |
| LTE - FDD             | 25.00                                 | -9.76               | 15.24           | No                   |
| LTE - TDD (QPSK)      | 26.00                                 | -1.62               | 24.38           | Yes <sup>(3)</sup>   |
| LTE - TDD (16QAM)     | 25.00                                 | -1.44               | 23.56           | Yes <sup>(3)</sup>   |
| LTE - TDD (64QAM)     | 24.00                                 | -1.54               | 22.46           | Yes <sup>(3)</sup>   |

#### General Note:

1. According to ANSI C63.19 2011-version, for WWAN RF air interface technology of a device is exempt from testing when its average antenna input power plus its MIF is  $\leq 17$  dBm for any of its operating modes.
2. For FDD LTE operation the worst case MIF plus the worst case average antenna input power for all modes are investigated to determine the testing requirements for this device.
3. For TDD LTE operation, RF Emissions evaluation was select highest "power + MIF" value of QPSK or 16QAM or 64QAM perform test and the worst case is QPSK to be tested for TDD LTE.
4. HAC RF rating is M4 for the air interface which meets the low power exemption.



## 10. Conducted RF Output Power (Unit: dBm)

| Average Antenna Input Power(dBm) |        |       |       |         |        |        |
|----------------------------------|--------|-------|-------|---------|--------|--------|
| Band                             | GSM850 |       |       | GSM1900 |        |        |
| Channel                          | 128    | 189   | 251   | 512     | 661    | 810    |
| Frequency (MHz)                  | 824.2  | 836.4 | 848.8 | 1850.2  | 1880.0 | 1909.8 |
| GSM (GMSK, 1 Tx slot)            | 33.22  | 33.45 | 33.45 | 29.84   | 29.71  | 29.56  |

| Average Antenna Input Power(dBm) |              |        |        |              |       |         |               |       |       |
|----------------------------------|--------------|--------|--------|--------------|-------|---------|---------------|-------|-------|
| Band                             | CDMA2000 BC0 |        |        | CDMA2000 BC1 |       |         | CDMA2000 BC10 |       |       |
| TX Channel                       | 1013         | 384    | 777    | 25           | 600   | 1175    | 476           | 580   | 684   |
| Frequency (MHz)                  | 824.7        | 836.52 | 848.31 | 1851.25      | 1880  | 1908.75 | 817.9         | 820.5 | 823.1 |
| 1xRTT RC1 SO3, 1/8th Rate        | 24.82        | 24.81  | 24.55  | 24.63        | 24.52 | 24.45   | 24.20         | 24.49 | 24.51 |

### <TDD LTE Band 38>

| BW [MHz]        | Modulation | RB Size | RB Offset | Power Low Ch. / Freq. | Power Middle Ch. / Freq. | Power High Ch. / Freq. |
|-----------------|------------|---------|-----------|-----------------------|--------------------------|------------------------|
| Channel         |            |         |           | 37850                 | 38000                    | 38150                  |
| Frequency (MHz) |            |         |           | 2580                  | 2595                     | 2610                   |
| 20              | QPSK       | 1       | 0         | 24.65                 | 24.62                    | 24.54                  |
| 20              | QPSK       | 1       | 49        | 24.54                 | 24.47                    | 24.27                  |
| 20              | QPSK       | 1       | 99        | 24.53                 | 24.43                    | 23.72                  |
| 20              | QPSK       | 50      | 0         | 23.66                 | 23.63                    | 23.38                  |
| 20              | QPSK       | 50      | 24        | 23.62                 | 23.57                    | 23.22                  |
| 20              | QPSK       | 50      | 50        | 23.60                 | 23.52                    | 22.93                  |
| 20              | QPSK       | 100     | 0         | 23.63                 | 23.58                    | 22.97                  |

### <TDD LTE Band 41>

| BW [MHz]        | Modulation | RB Size | RB Offset | Power Low Ch. / Freq. | Power Low Middle Ch. / Freq. | Power Middle Ch. / Freq. | Power High Middle Ch. / Freq. | Power High Ch. / Freq. |
|-----------------|------------|---------|-----------|-----------------------|------------------------------|--------------------------|-------------------------------|------------------------|
| Channel         |            |         |           | 39750                 | 40185                        | 40620                    | 41055                         | 41490                  |
| Frequency (MHz) |            |         |           | 2506                  | 2549.5                       | 2593                     | 2636.5                        | 2680                   |
| 20              | QPSK       | 1       | 0         | 25.48                 | 25.64                        | 25.69                    | 24.87                         | 24.15                  |
| 20              | QPSK       | 1       | 49        | 25.34                 | 25.52                        | 25.52                    | 24.99                         | 25.25                  |
| 20              | QPSK       | 1       | 99        | 25.43                 | 25.58                        | 25.60                    | 24.97                         | 24.03                  |
| 20              | QPSK       | 50      | 0         | 24.48                 | 24.61                        | 24.63                    | 23.63                         | 23.85                  |
| 20              | QPSK       | 50      | 24        | 24.43                 | 24.49                        | 24.60                    | 23.60                         | 23.91                  |
| 20              | QPSK       | 50      | 50        | 24.45                 | 24.53                        | 24.53                    | 23.51                         | 23.90                  |
| 20              | QPSK       | 100     | 0         | 24.42                 | 24.58                        | 24.54                    | 23.64                         | 23.86                  |

## 11. HAC RF Emission Test Results

| Plot No. | Air Interface | Mode                       | Channel | Average Antenna Input Power (dBm) | MIF   | E-Field (dBV/m) | Margin to FCC M3 limit (dB) | E-Field M Rating |
|----------|---------------|----------------------------|---------|-----------------------------------|-------|-----------------|-----------------------------|------------------|
| 01       | GSM850        | GSM Voice                  | 128     | 33.22                             | 3.63  | 33.67           | 11.33                       | M4               |
|          | GSM850        | GSM Voice                  | 189     | 33.45                             | 3.63  | 33.77           | 11.23                       | M4               |
|          | GSM850        | GSM Voice                  | 251     | 33.45                             | 3.63  | 33.49           | 11.51                       | M4               |
| 02       | GSM1900       | GSM Voice                  | 512     | 29.84                             | 3.63  | 26.89           | 8.11                        | M4               |
|          | GSM1900       | GSM Voice                  | 661     | 29.71                             | 3.63  | 26.60           | 8.40                        | M4               |
|          | GSM1900       | GSM Voice                  | 810     | 29.56                             | 3.63  | 26.61           | 8.39                        | M4               |
| 03       | CDMA BC0      | 1xRTT, RC1 SO3, 1/8th Rate | 1013    | 24.82                             | 3.26  | 25.75           | 19.25                       | M4               |
|          | CDMA BC0      | 1xRTT, RC1 SO3, 1/8th Rate | 384     | 24.81                             | 3.26  | 25.48           | 19.52                       | M4               |
|          | CDMA BC0      | 1xRTT, RC1 SO3, 1/8th Rate | 777     | 24.55                             | 3.26  | 25.42           | 19.58                       | M4               |
| 04       | CDMA BC1      | 1xRTT, RC1 SO3, 1/8th Rate | 25      | 24.63                             | 3.26  | 25.69           | 9.31                        | M4               |
|          | CDMA BC1      | 1xRTT, RC1 SO3, 1/8th Rate | 600     | 24.52                             | 3.26  | 26.57           | 8.43                        | M4               |
|          | CDMA BC1      | 1xRTT, RC1 SO3, 1/8th Rate | 1175    | 24.45                             | 3.26  | 25.83           | 9.17                        | M4               |
| 05       | CDMA BC10     | 1xRTT, RC1 SO3, 1/8th Rate | 476     | 24.20                             | 3.26  | 25.51           | 19.49                       | M4               |
|          | CDMA BC10     | 1xRTT, RC1 SO3, 1/8th Rate | 580     | 24.49                             | 3.26  | 25.30           | 19.70                       | M4               |
|          | CDMA BC10     | 1xRTT, RC1 SO3, 1/8th Rate | 684     | 24.51                             | 3.26  | 25.72           | 19.28                       | M4               |
| 06       | LTE Band 38   | 20M,QPSK,1RB,0offset       | 37850   | 24.65                             | -1.62 | 19.00           | 16.00                       | M4               |
|          | LTE Band 38   | 20M,QPSK,1RB,0offset       | 38000   | 24.62                             | -1.62 | 19.18           | 15.82                       | M4               |
|          | LTE Band 38   | 20M,QPSK,1RB,0offset       | 38150   | 24.54                             | -1.62 | 19.51           | 15.49                       | M4               |
| 07       | LTE Band 41   | 20M,QPSK,1RB,0offset       | 39750   | 25.48                             | -1.62 | 17.53           | 17.47                       | M4               |
|          | LTE Band 41   | 20M,QPSK,1RB,0offset       | 40185   | 25.64                             | -1.62 | 18.12           | 16.88                       | M4               |
|          | LTE Band 41   | 20M,QPSK,1RB,0offset       | 40620   | 25.69                             | -1.62 | 18.90           | 16.10                       | M4               |
| 07       | LTE Band 41   | 20M,QPSK,1RB,0offset       | 41055   | 24.87                             | -1.62 | 19.59           | 15.41                       | M4               |
|          | LTE Band 41   | 20M,QPSK,1RB,0offset       | 41490   | 24.15                             | -1.62 | 21.21           | 13.79                       | M4               |

**Remark:**

1. The HAC measurement system applies MIF value onto the measured RMS E-field, which is indirect method in ANSI C63.19 2011 version, and reports the RF audio interference level.
2. The uncertainty is 0.2dB of MIF ranges from -7dB to +5dB. GSM850 band with rating M4, GSM1900 band with rating M4 would not be affected considering the MIF uncertainty.
3. There is special HAC mode software on this EUT.

Test Engineer : Aaron Chen.



## **12. Uncertainty Assessment**

The component of uncertainty may generally be categorized according to the methods used to evaluate them. The evaluation of uncertainty by the statistical analysis of a series of observations is termed a Type A evaluation of uncertainty. The evaluation of uncertainty by means other than the statistical analysis of a series of observation is termed a Type B evaluation of uncertainty. Each component of uncertainty, however evaluated, is represented by an estimated standard deviation, termed standard uncertainty, which is determined by the positive square root of the estimated variance.

The combined standard uncertainty of the measurement result represents the estimated standard deviation of the result. It is obtained by combining the individual standard uncertainties of both Type A and Type B evaluation using the usual “root-sum-squares” (RSS) methods of combining standard deviations by taking the positive square root of the estimated variances. Expanded uncertainty is a measure of uncertainty that defines an interval about the measurement result within which the measured value is confidently believed to lie. It is obtained by multiplying the combined standard uncertainty by a coverage factor. For purpose of this document, a coverage factor two is used, which corresponds to confidence interval of about 95 %. The DASY uncertainty Budget is showed in Table 12.1.

| Error Description                         | Uncertainty Value ( $\pm\%$ ) | Probability Distribution | Divisor    | Ci (E) | Standard Uncertainty (E) |
|---|-------------------------------|--------------------------|------------|--------|--------------------------|
| <b>Measurement System</b>                 |                               |                          |            |        |                          |
| Probe Calibration                         | 5.1                           | Normal                   | 1          | 1      | $\pm 5.1 \%$             |
| Axial Isotropy                            | 4.7                           | Rectangular              | $\sqrt{3}$ | 1      | $\pm 2.7 \%$             |
| Sensor Displacement                       | 16.5                          | Rectangular              | $\sqrt{3}$ | 1      | $\pm 9.5 \%$             |
| Boundary Effects                          | 2.4                           | Rectangular              | $\sqrt{3}$ | 1      | $\pm 1.4 \%$             |
| Phantom Boundary Effects                  | 7.2                           | Rectangular              | $\sqrt{3}$ | 1      | $\pm 4.1 \%$             |
| Linearity                                 | 4.7                           | Rectangular              | $\sqrt{3}$ | 1      | $\pm 2.7 \%$             |
| Scaling with PMR Calibration              | 10.0                          | Rectangular              | $\sqrt{3}$ | 1      | $\pm 5.77 \%$            |
| System Detection Limit                    | 1.0                           | Rectangular              | $\sqrt{3}$ | 1      | $\pm 0.6 \%$             |
| Readout Electronics                       | 0.3                           | Normal                   | 1          | 1      | $\pm 0.3 \%$             |
| Response Time                             | 0.8                           | Rectangular              | $\sqrt{3}$ | 1      | $\pm 0.5 \%$             |
| Integration Time                          | 2.6                           | Rectangular              | $\sqrt{3}$ | 1      | $\pm 1.5 \%$             |
| RF Ambient Conditions                     | 3.0                           | Rectangular              | $\sqrt{3}$ | 1      | $\pm 1.7 \%$             |
| RF Reflections                            | 12.0                          | Rectangular              | $\sqrt{3}$ | 1      | $\pm 6.9 \%$             |
| Probe Positioner                          | 1.2                           | Rectangular              | $\sqrt{3}$ | 1      | $\pm 0.7 \%$             |
| Probe Positioning                         | 4.7                           | Rectangular              | $\sqrt{3}$ | 1      | $\pm 2.7 \%$             |
| Extrap. and Interpolation                 | 1.0                           | Rectangular              | $\sqrt{3}$ | 1      | $\pm 0.6 \%$             |
| <b>Test Sample Related</b>                |                               |                          |            |        |                          |
| Device Positioning Vertical               | 4.7                           | Rectangular              | $\sqrt{3}$ | 1      | $\pm 2.7 \%$             |
| Device Positioning Lateral                | 1.0                           | Rectangular              | $\sqrt{3}$ | 1      | $\pm 0.6 \%$             |
| Device Holder and Phantom                 | 2.4                           | Rectangular              | $\sqrt{3}$ | 1      | $\pm 1.4 \%$             |
| Power Drift                               | 5.0                           | Rectangular              | $\sqrt{3}$ | 1      | $\pm 2.9 \%$             |
| <b>Phantom and Setup Related</b>          |                               |                          |            |        |                          |
| Phantom Thickness                         | 2.4                           | Rectangular              | $\sqrt{3}$ | 1      | $\pm 1.4 \%$             |
| <b>Combined Standard Uncertainty</b>      |                               |                          |            |        | $\pm 16.30 \%$           |
| <b>Coverage Factor for 95 %</b>           |                               |                          |            |        | K = 2                    |
| <b>Expanded Std. Uncertainty on Power</b> |                               |                          |            |        | $\pm 32.6 \%$            |
| <b>Expanded Std. Uncertainty on Field</b> |                               |                          |            |        | $\pm 16.3 \%$            |

**Table 12.1 Uncertainty Budget of HAC free field assessment**
**Remark:**

Worst-Case uncertainty budget for HAC free field assessment according to ANSIC63.19 [1], [2]. The budget is valid for the frequency range 700 MHz - 3 GHz and represents a worst case analysis.





### **13. References**

- [1] ANSI C63.19-2011, "American National Standard for Methods of Measurement of Compatibility between Wireless Communications Devices and Hearing Aids", 27 May 2011.
- [2] FCC KDB 285076 D01v04r01, "Equipment Authorization Guidance for Hearing Aid Compatibility", Apr 2016
- [3] FCC KDB 285076 D02v02, "Guidance for Performing T-Coil tests for Air Interfaces Supporting Voice over IP", Apr 2016
- [4] SPEAG DASY System Handbook