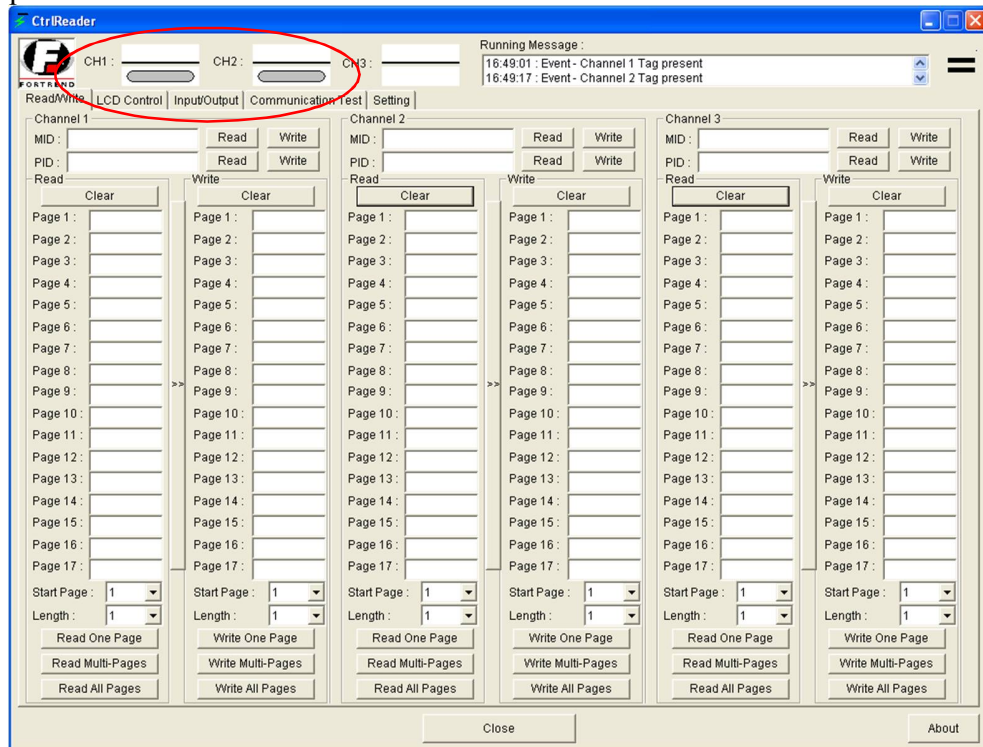
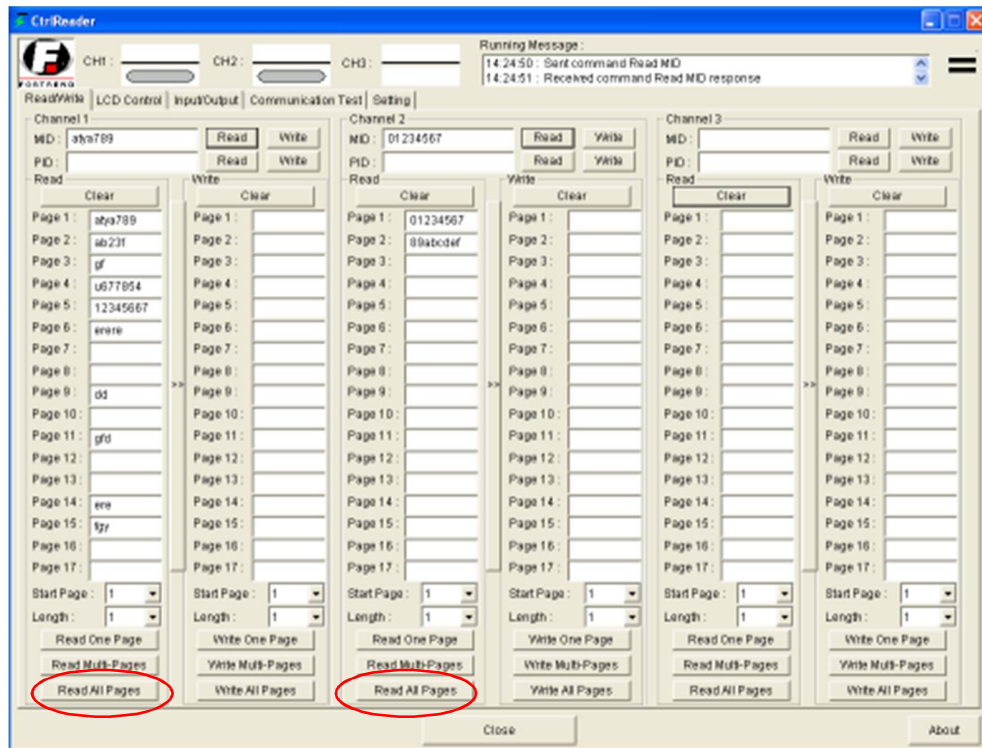


If more than one channel occupied, indicator will show all status “ON” as picture shown below

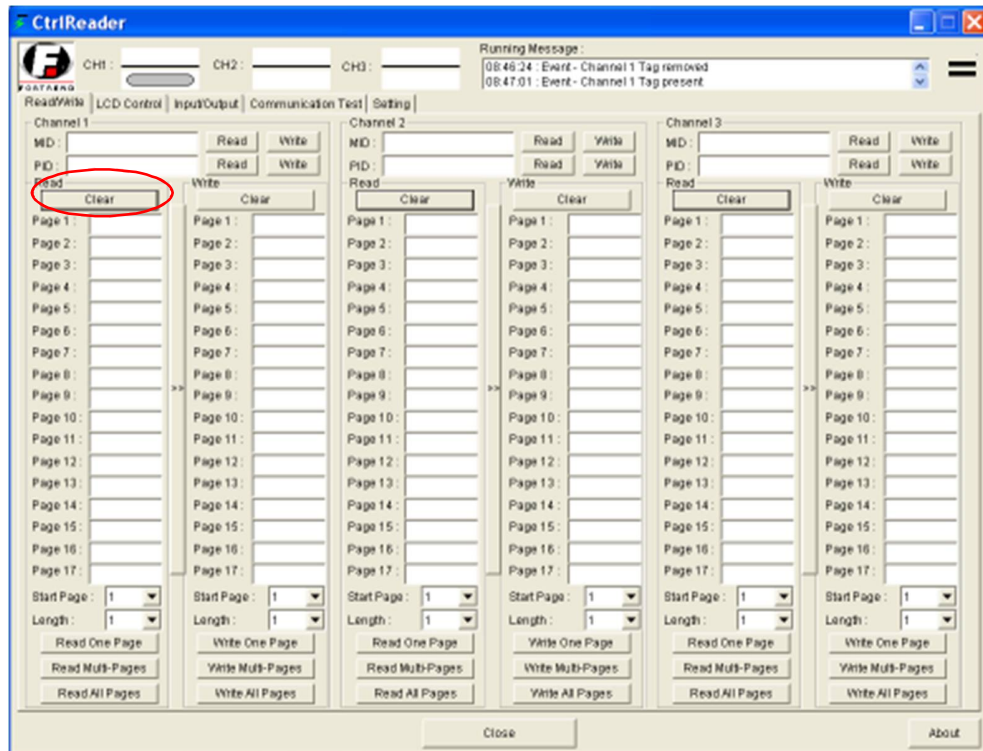


Proprietary Note: This document contains confidential information proprietary to Fortrend Engineering, any disclosure or unauthorized use is prohibited.

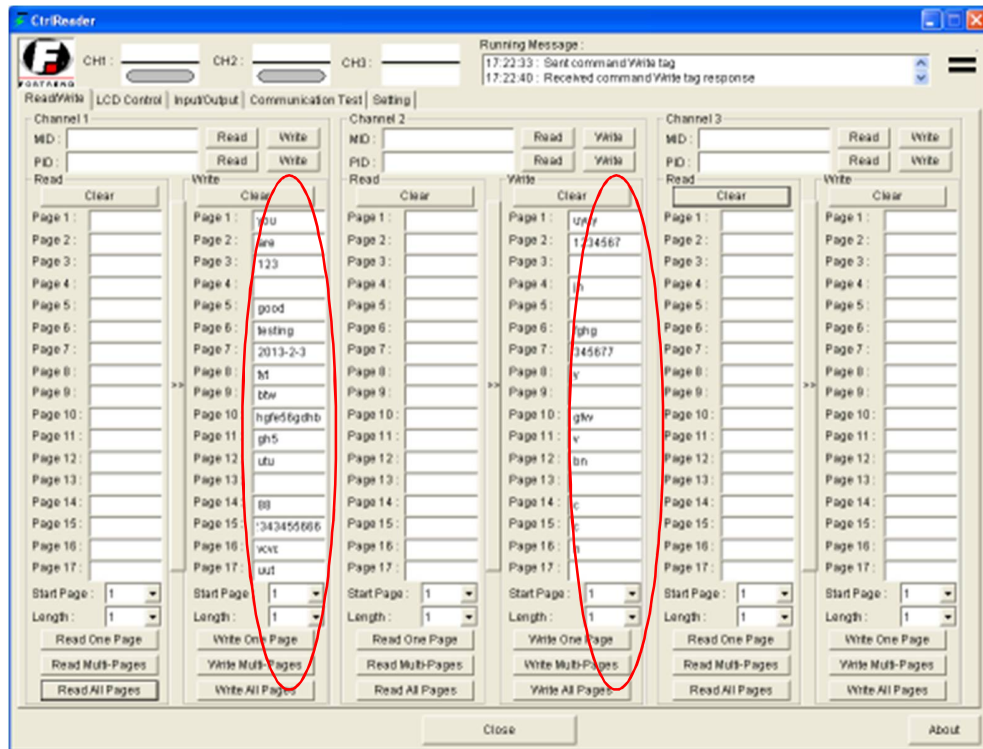
3. Click “Read All Pages” icon on relevant Channel that connected the antenna. The channel should display data on box of each page.



4. Click “Clear” icon in order to clear all data before performing “Write”.

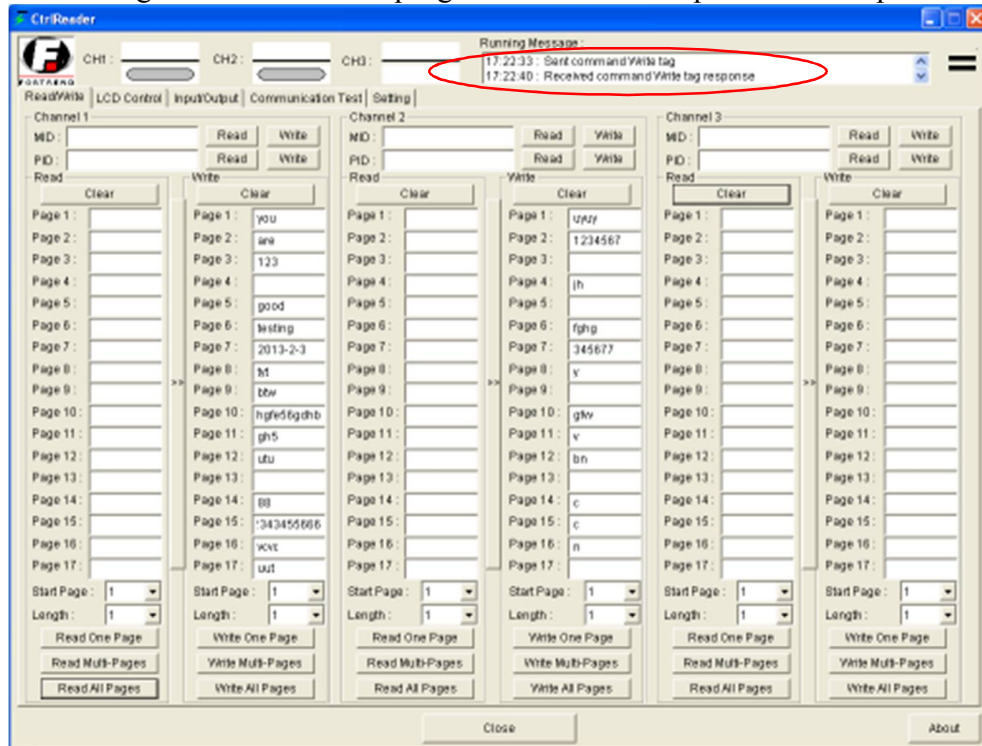


5. Type new data on the data box for “Write” from page 1 to page 17 at different channels

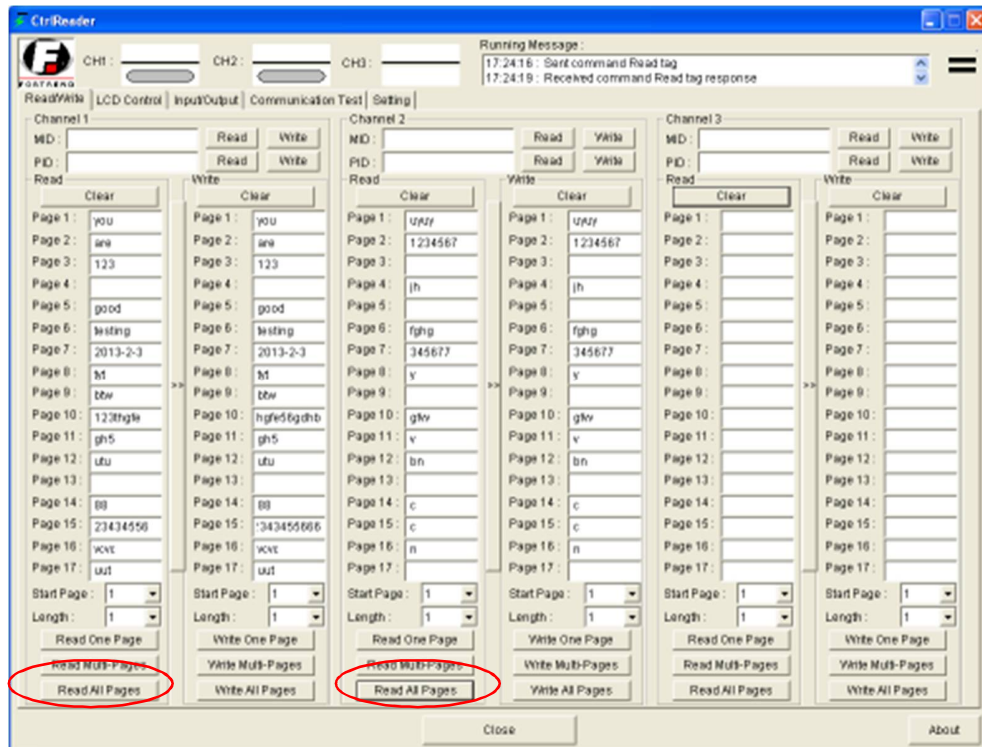


Proprietary Note: This document contains confidential information proprietary to Fortrend Engineering, any disclosure or unauthorized use is prohibited.

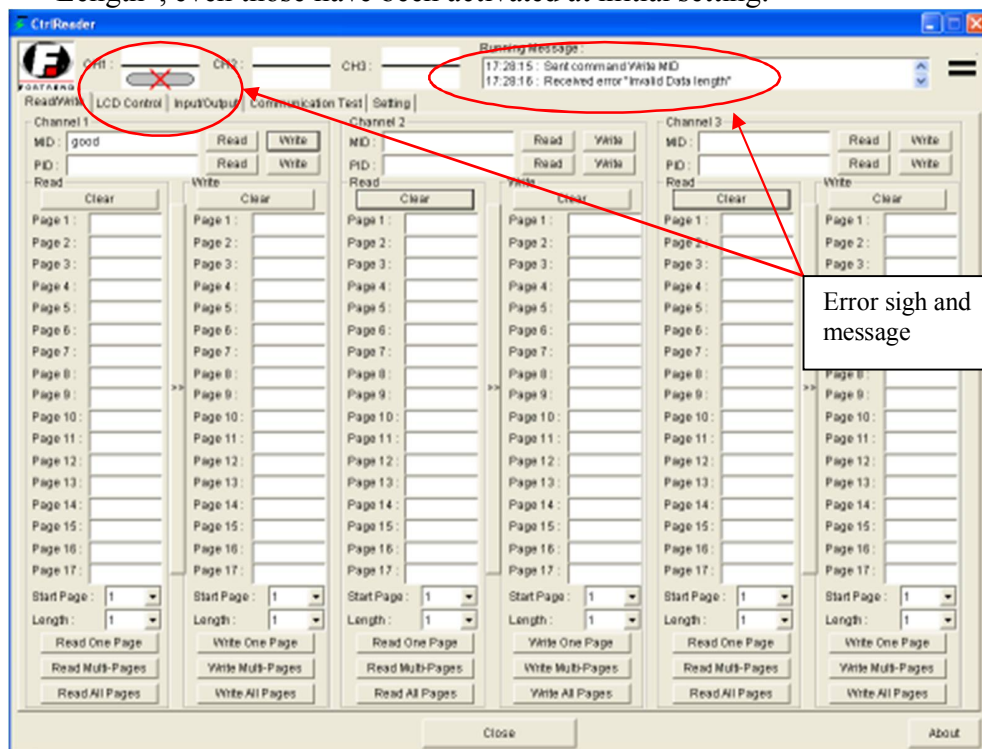
6. Click “Write All Pages”, and wait for “Running Message” response- “Received command Write Tag response” that should be shown at “Running Message” window at the top right corner when the process is completed.



7. Click “Read All Page” in order to verify the new data, those should be match to all data of “Write”.

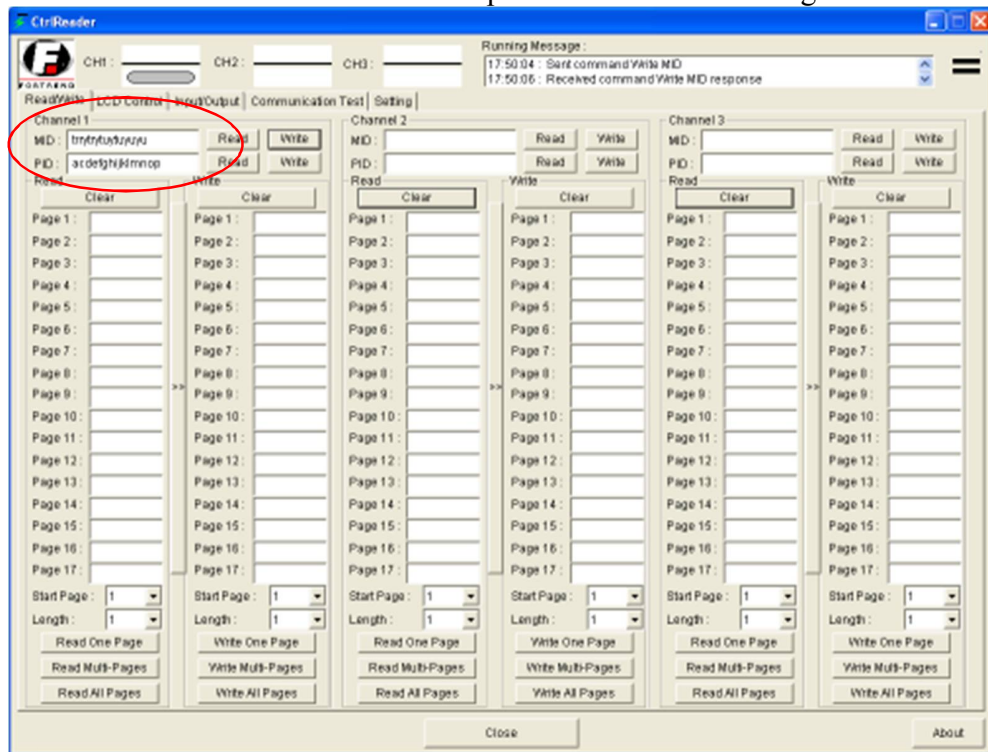


8. “Write” is not applicable at “MID” and “PID” because of “Invalid Data Length”, even those have been activated at initial setting.

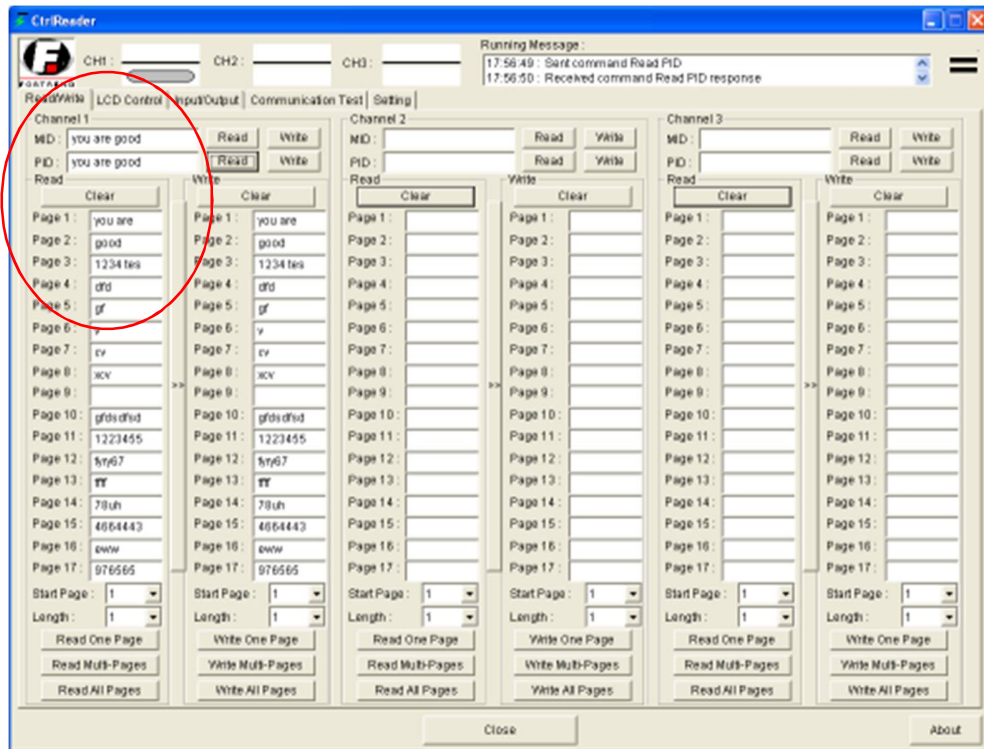


Proprietary Note: This document contains confidential information proprietary to Fortrend Engineering, any disclosure or unauthorized use is prohibited.

9. OR, individually click 'Read' icon on relevant channel "MID" or "PID".
Box of MID or PID should show data if "Report the MID" and "Report the PID" is activated on the initial setting. "MID" and "PID" only read max 16 character from address 0 to 135 depends on the initial setting.



Note: Compare style of reading data between "MID & PID" and all pages. If both of initial setting of MID and PID are same.



10. Continue to test few times to make sure that is no error.