



深圳市英佳创电子科技有限公司

Shenzhen Yingjiachuang Electronic Technology Co., LTD

Product antenna commissioning report

Time: January 07, 2023

Proposed system: Huang Zhiwei

Audit: Fang Wenfeng

Approval: Xiao Han

Shenzhen company address: building A.C, guangming valley, hongyu guangming valley, no. 11, jiangyou magang, shiwei community, matantian office, guangming district, shenzhen

Hangzhou company address: 212, Building B, Dahua Jianghong International Innovation Park, No. 369, Internet of Things Street, Binjiang District, Hangzhou

Telephone: 0755-27810060

Fax : 0755-27810057

Company website: <http://www.szsyjc.com>

E-mail: yjc@szsyjc.com

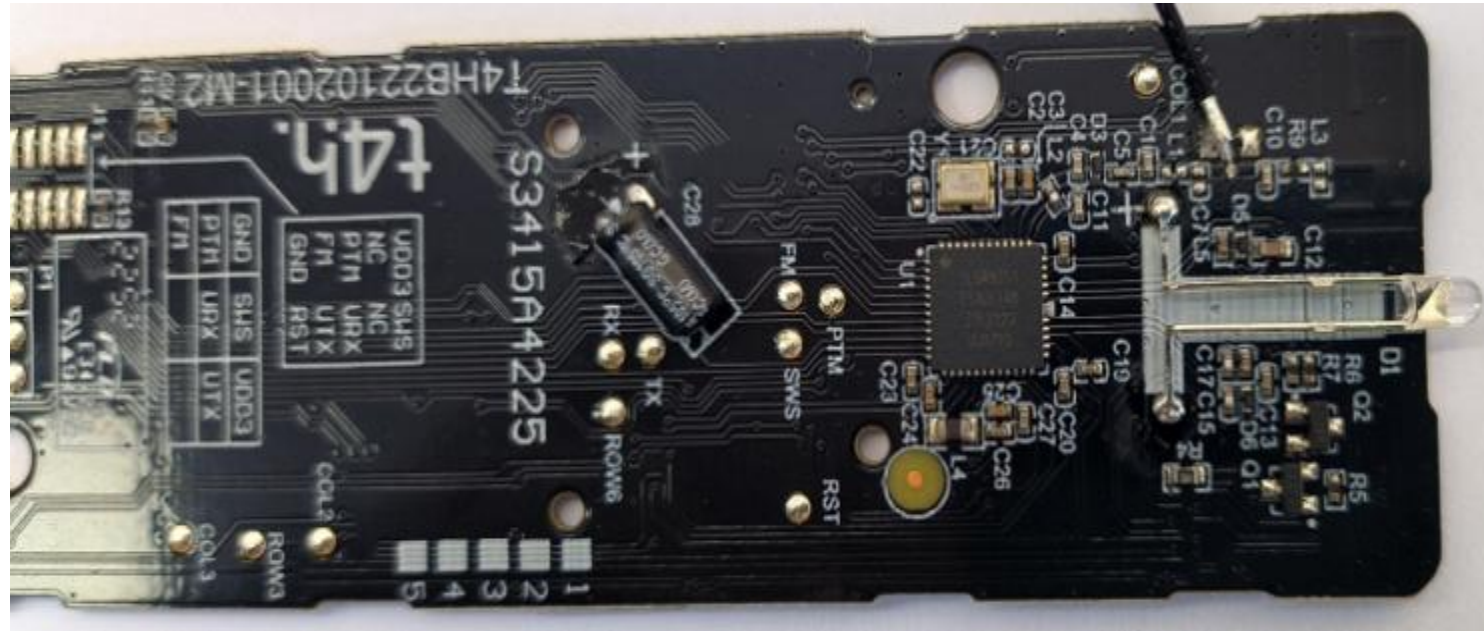
—. Project Overview

CustomerName	Project Name	Antenna implementation method
802	S3415A4225	Onboard antenna
Working frequency band (MHz)		
2.4G	2400-2500 MHz	

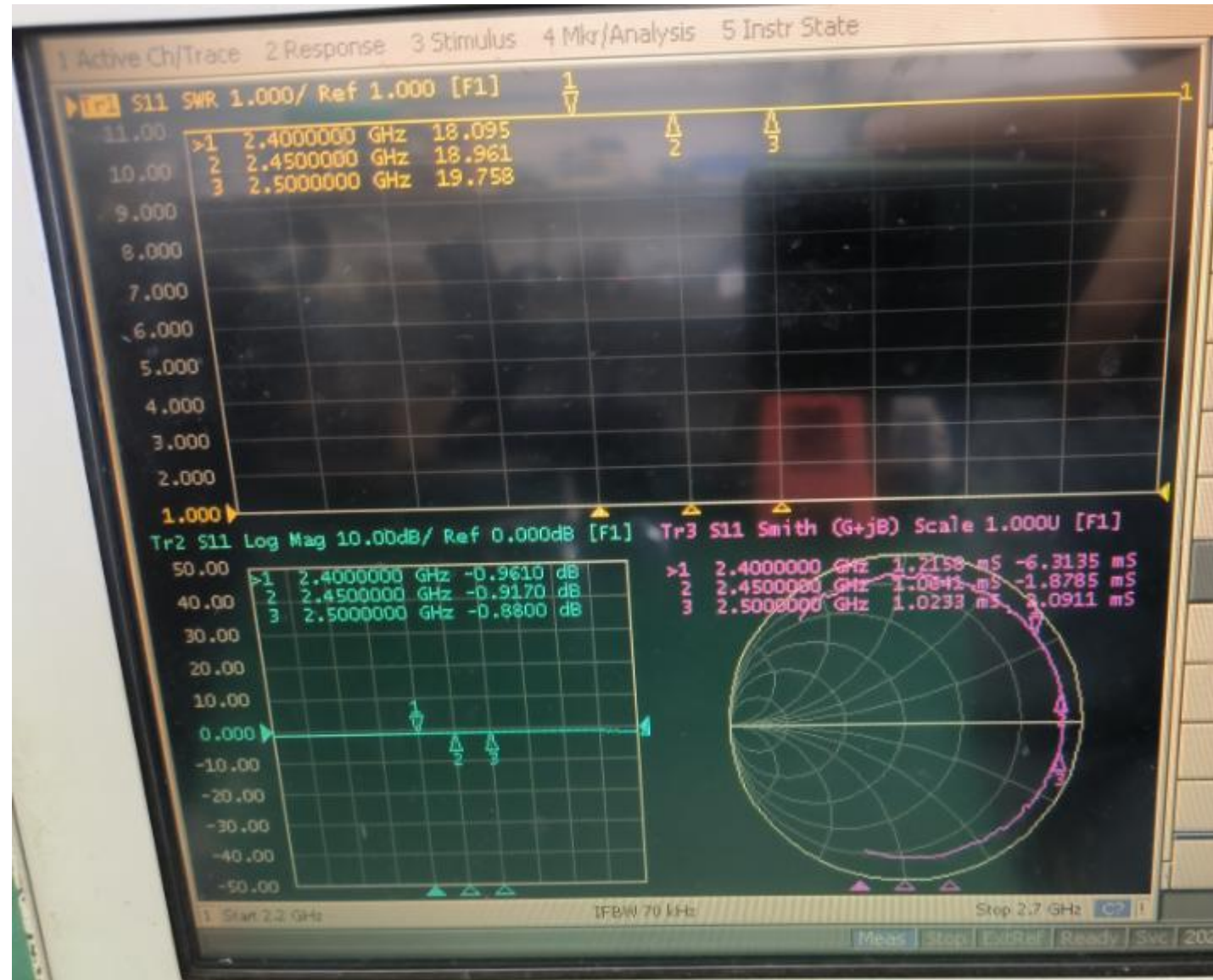
Directory:

4. Original antenna location diagram
5. Standing wave diagram of the original antenna
6. 2.4G passive test data of the original antenna
7. 2D3D image of original antenna test
8. Antenna position diagram
9. Antenna standing wave pattern
10. Antenna 2.4G passive test data
11. Antenna test 2D3D map

Original antenna location diagram

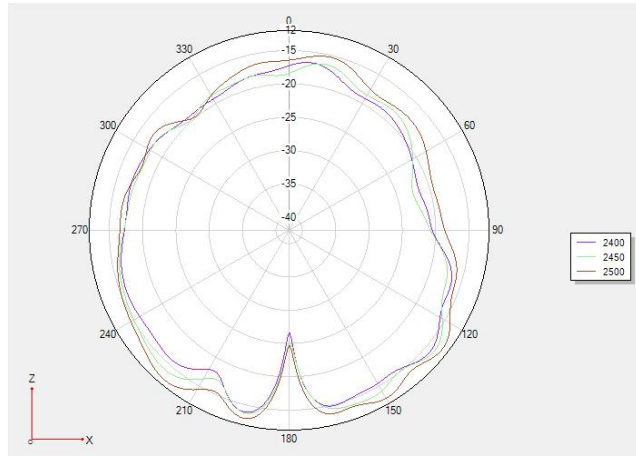


Standing wave diagram of the original antenna

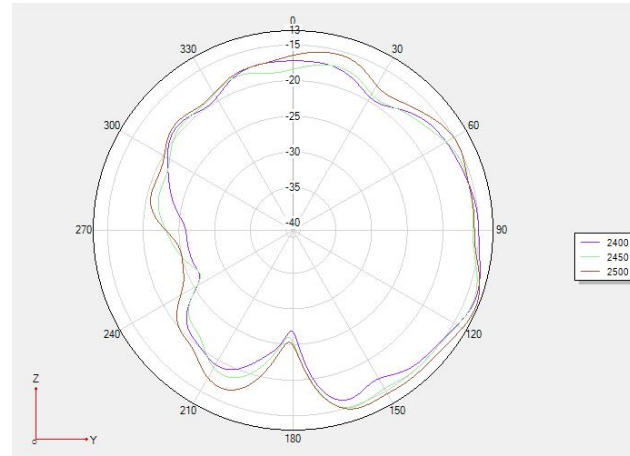


2D3D image of original antenna test

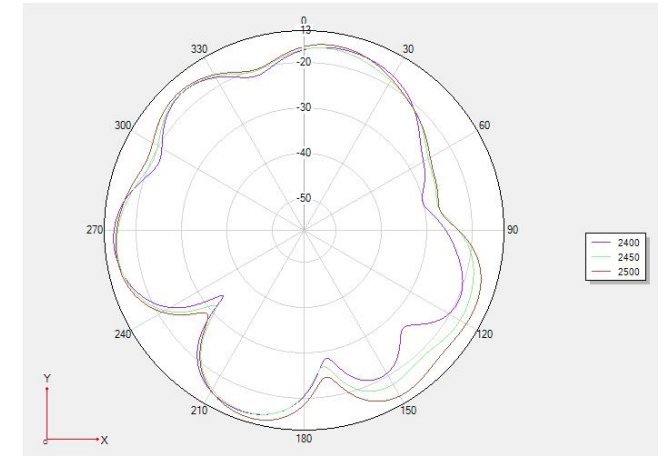
Phi 0 2Dfigure



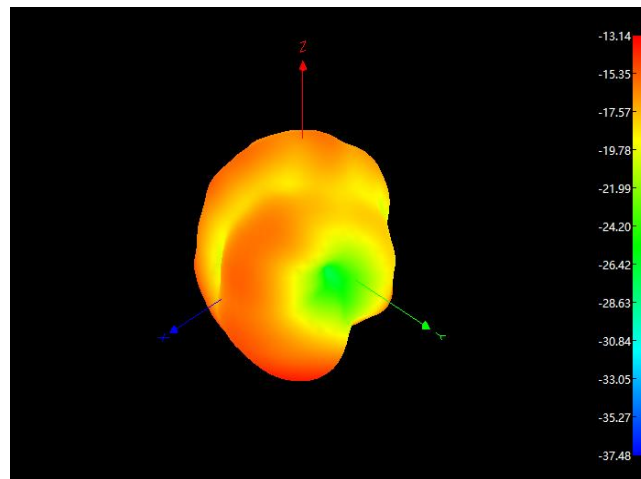
Phi 90 2Dfigure



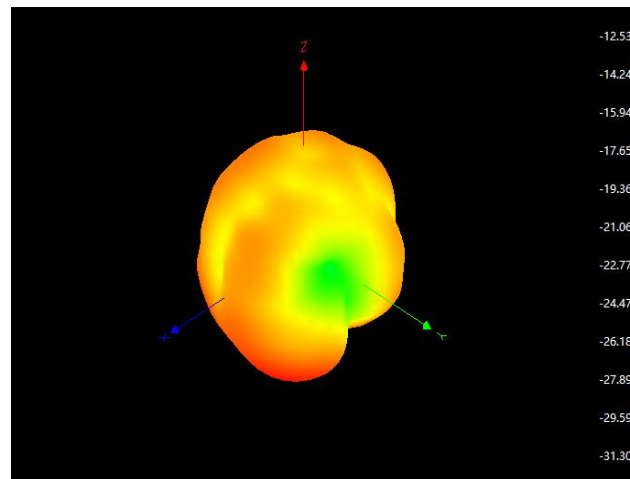
Theta 90 2Dfigure



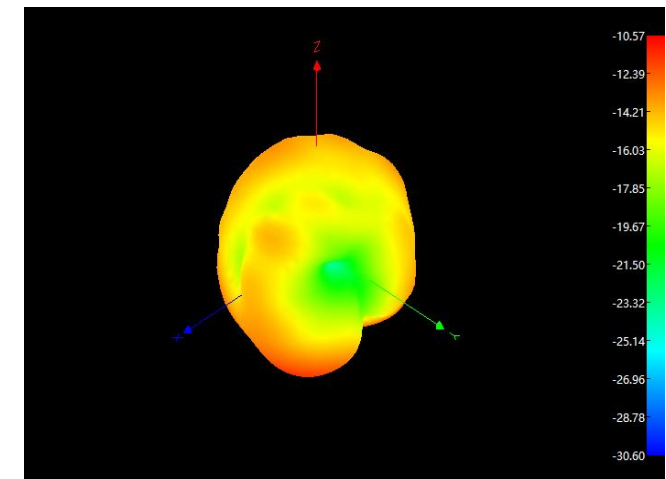
2400



2450

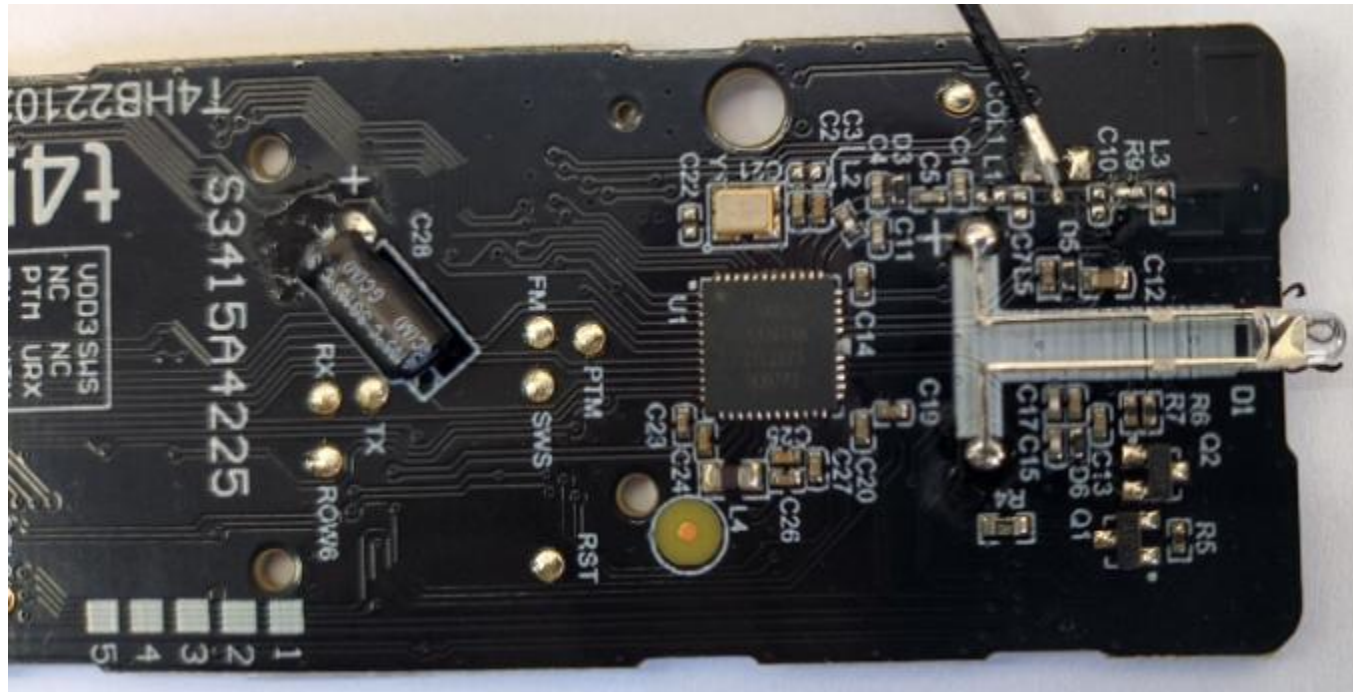


2500



Antenna position diagram

R9 string 0R,C10NC, L3NC



Antenna standing wave pattern

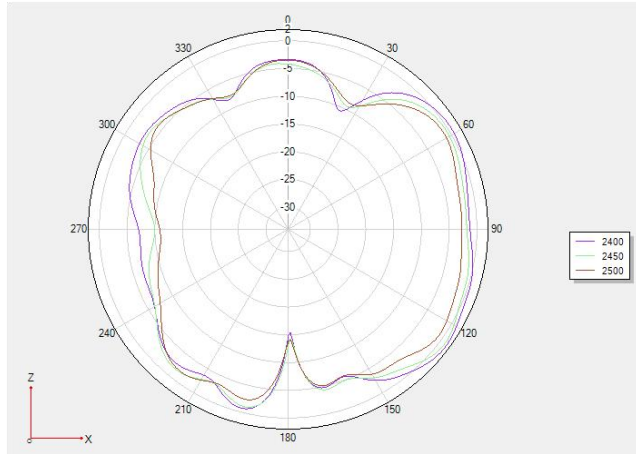


Antenna 2.4G passive test data

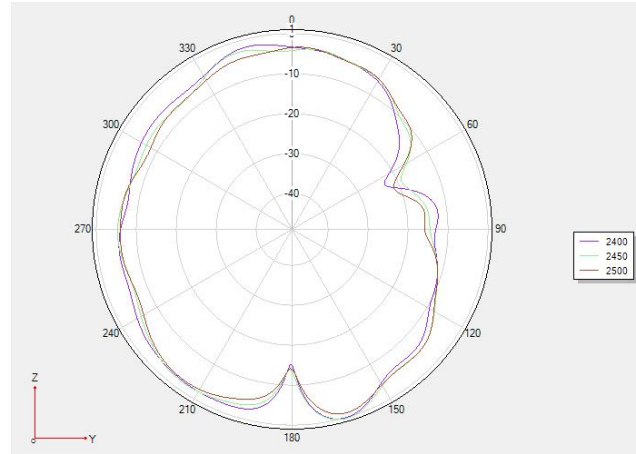
Frequency	Efficiency / %	Gain/ dBi
2400MHz	42.94	2.91
2410MHz	42.84	3.14
2420MHz	40.23	2.7
2430MHz	45.86	2.26
2440MHz	44.24	2.04
2450MHz	44.21	2.16
2460MHz	45.39	1.92
2470MHz	41.11	1.52
2480MHz	41.78	1.91
2490MHz	38.46	1.44
2500MHz	37.33	1.28

Antenna test 2D3D map

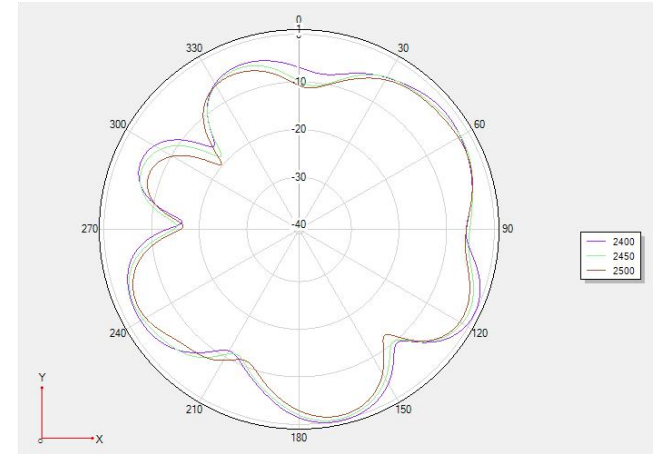
Phi 0 2Dfigure



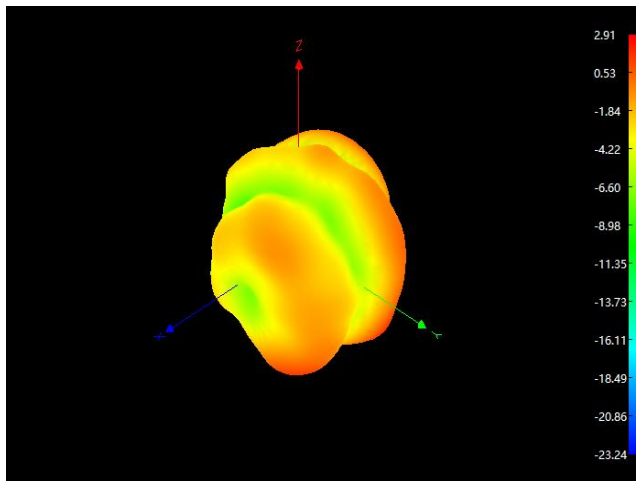
Phi 90 2Dfigure



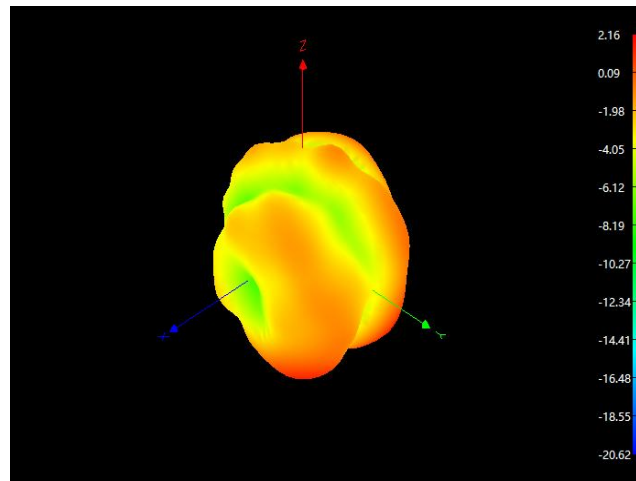
Theta 90 2Dfigure



2400



2450



2500

