

# TEST REPORT

Reference No..... : WTS17S0169866E  
FCC ID : 2ALAYMYKIPET  
Applicant..... : Allterco Robotics  
Address..... : 1404 Sofia, Bulgaria,109 Bulgaria Blvd. Iv.8, Bulgaria  
Manufacturer ..... : Shenzhen Broadwell Technology Co., LTD  
Address..... : 719, Mintai Mansion, Minzhi Road, Longhua New District, Shenzhen,  
Guangdong, China  
Product Name..... : Smart Pet Tracker  
Model No..... : MyKi PET  
Brand..... : MyKi  
Standards ..... : FCC PART 15, SUBPART B: 2016  
Date of Receipt sample .... : Jan. 18, 2017  
Date of Test ..... : Jan. 19 – Feb. 20, 2017  
Date of Issue..... : Feb. 21, 2017  
Test Result..... : **Pass**

Remarks:

The results shown in this test report refer only to the sample(s) tested, this test report cannot be reproduced, except in full, without prior written permission of the company. The report would be invalid without specific stamp of test institute and the signatures of compiler and approver.

**Prepared By:**

**Waltek Services (Shenzhen) Co., Ltd.**

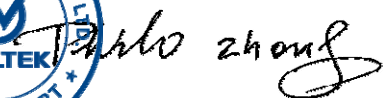
Address: 1/F., Fukangtai Building, West Baima Road, Songgang Street, Baoan District, Shenzhen,  
Guangdong, China  
Tel :+86-755-83551033  
Fax:+86-755-83552400

Compiled by:



Zero Zhou / Test Engineer

Approved by:



Philo Zhong / Manager

## 2 Laboratories Introduction

**Waltek Services Test Group Ltd** is a professional third-party testing and certification organization with multi-year product testing and certification experience, established strictly in accordance with ISO/IEC 17025 requirements, and accredited by CNAS (China National Accreditation Service for Conformity Assessment) AQSIIQ, CMA and IECEE for CBTL. Meanwhile, Waltek has got recognition as registration and accreditation laboratory from EMSD (Electrical and Mechanical Services Department), and American Energy star, FCC(The Federal Communications Commission), CPSC(Consumer Product Safety Commission), CEC(California energy efficiency), IC(Industry Canada) and ELI(Efficient Lighting Initiative). It's the strategic partner and data recognition laboratory of international authoritative organizations, such as UL, Intertek(ETL-SEMKO), CSA, TÜV Rheinland, TÜV SÜD, etc.



**Waltek Services Test Group Ltd.** is one of the largest and the most comprehensive third party testing organizations in China, our headquarter located in Shenzhen and have branches in Foshan, Dongguan, Zhongshan, Suzhou, Ningbo and Hong Kong, Our test capability covered four large fields: safety test. ElectroMagnetic Compatibility(EMC), reliability and energy performance, Chemical test. As a professional, comprehensive, justice international test organization, we still keep the scientific and rigorous work attitude to help each client satisfy the international standards and assist their product enter into globe market smoothly.

**3 Contents**

Page

<b>1</b>	<b>COVER PAGE</b> .....	<b>1</b>
<b>2</b>	<b>LABORATORIES INTRODUCTION</b> .....	<b>2</b>
<b>3</b>	<b>CONTENTS</b> .....	<b>3</b>
<b>4</b>	<b>REVISION HISTORY</b> .....	<b>4</b>
<b>5</b>	<b>GENERAL INFORMATION</b> .....	<b>5</b>
5.1	GENERAL DESCRIPTION OF E.U.T.....	5
5.2	DETAILS OF E.U.T.....	5
5.3	STANDARDS APPLICABLE FOR TESTING .....	5
5.4	TEST FACILITY .....	6
5.5	SUBCONTRACTED .....	6
5.6	ABNORMALITIES FROM STANDARD CONDITIONS .....	6
<b>6</b>	<b>TEST SUMMARY</b> .....	<b>6</b>
<b>7</b>	<b>EQUIPMENT USED DURING TEST</b> .....	<b>7</b>
7.1	EQUIPMENT LIST.....	7
7.2	DESCRIPTION OF SUPPORT UNITS.....	8
7.3	MEASUREMENT UNCERTAINTY.....	8
<b>8</b>	<b>EMISSION TEST RESULTS</b> .....	<b>9</b>
8.1	POWER LINE CONDUCTED EMISSION, 150kHz TO 30MHz .....	9
8.2	RADIATION EMISSION, 30MHz TO 1000MHz.....	12
8.3	RADIATION EMISSION, ABOVE 1000MHz.....	15
<b>9</b>	<b>PHOTOGRAPHS – TEST SETUP</b> .....	<b>18</b>
9.1	PHOTOGRAPH –POWER LINE CONDUCTED EMISSION TEST SETUP.....	18
9.2	PHOTOGRAPH – RADIATED EMISSION TEST SETUP FOR 30MHz~1000MHz.....	18
9.3	PHOTOGRAPH – RADIATED EMISSION TEST SETUP FOR ABOVE 1GHz.....	19
<b>10</b>	<b>PHOTOGRAPHS - CONSTRUCTIONAL DETAILS</b> .....	<b>20</b>
10.1	EXTERNAL VIEW .....	20
10.2	INTERNAL VIEW.....	24

#### 4 Revision History

Test report No.	Date of Receipt sample	Date of Test	Date of Issue	Purpose	Comment	Approved
WTS17S0169866E	Jan. 18, 2017	Jan. 19 – Feb. 20, 2017	Feb. 21, 2017	original	-	Valid

## 5 General Information

### 5.1 General Description of E.U.T.

Product Name:	Smart Pet Tracker
Model No.:	MyKi PET
Model Description:	N/A
GSM Band(s):	GSM 850/900/1800/1900MHz
GPRS Class:	12
WCDMA Band(s):	N/A
LTE Band(s):	N/A
Wi-Fi Specification:	N/A
Bluetooth Version:	N/A
GPS:	Support
NFC:	N/A
Hardware Version:	G72S-MB-V2.0
Software Version:	G72S-SW-V1.0
Storage Location:	Internal Storage
Note:	N/A
Product Name:	Smart Pet Tracker
Model No.:	MyKi PET
Model Description:	N/A

### 5.2 Details of E.U.T.

Technical Data:	Battery DC 3.7V 480mAh
Adapter:	Sale without adapter

### 5.3 Standards Applicable for Testing

The tests were performed according to following standards:

FCC PART 15, SUBPART B    Electronic Code of Federal Regulations- Unintentional Radiators

## 5.4 Test Facility

The test facility has a test site registered with the following organizations:

- **IC – Registration No.: 7760A-1**

Waltek Services (Shenzhen) Co., Ltd. has been registered and fully described in a report filed with the Industry Canada. The acceptance letter from the Industry Canada is maintained in our files. Registration 7760A-1, October 15, 2015.

- **FCC Test Site 1# – Registration No.: 880581**

Waltek Services(Shenzhen) Co., Ltd. EMC Laboratory `has been registered and fully described in a report filed with the (FCC) Federal Communications Commission. The acceptance letter from the FCC is maintained in our files. Registration 880581, April 29, 2014.

- **FCC Test Site 2# – Registration No.: 328995**

Waltek Services(Shenzhen) Co., Ltd. EMC Laboratory `has been registered and fully described in a report filed with the (FCC) Federal Communications Commission. The acceptance letter from the FCC is maintained in our files. Registration 328995, December 3, 2014.

## 5.5 Subcontracted

Whether parts of tests for the product have been subcontracted to other labs:

Yes       No

If Yes, list the related test items and lab information:

Test Lab:      N/A

Test items:    N/A

## 5.6 Abnormalities from Standard Conditions

None.

## 6 Test Summary

Test Item	Test Requirement	Class	Test Method	Test Result
Power Line Conducted Emission (150kHz to 30MHz)	FCC PART 15, SUBPART B	Class B	ANSI C63.4: 2014	Pass
Radiated Emission (30MHz to 1GHz)	FCC PART 15, SUBPART B	Class B	ANSI C63.4: 2014	Pass
Radiated Emission (Above 1GHz)	FCC PART 15, SUBPART B	Class B	ANSI C63.4: 2014	Pass

Remark:

Pass    Test item meets the requirement

Fail    Test item does not meet the requirement

N/A    Test case does not apply to the test object

## 7 Equipment Used during Test

### 7.1 Equipment List

Conducted Emissions Test Site 1#						
Item	Equipment	Manufacturer	Model No.	Serial No.	Last Calibration Date	Calibration Due Date
1.	EMI Test Receiver	R&S	ESCI	100947	Sep.12,2016	Sep.11,2017
2.	LISN	R&S	ENV216	101215	Sep.12,2016	Sep.11,2017
3.	Cable	Top	TYPE16(3.5M)	-	Sep.12,2016	Sep.11,2017
4	Universal Radio Communication Tester	R&S	CMU 200	112461	Apr.13,2016	Apr.12,2017
Conducted Emissions Test Site 2#						
Item	Equipment	Manufacturer	Model No.	Serial No.	Last Calibration Date	Calibration Due Date
1.	EMI Test Receiver	R&S	ESCI	101155	Sep.12,2016	Sep.11,2017
2.	LISN	SCHWARZBECK	NSLK 8128	8128-289	Sep.12,2016	Sep.11,2017
3.	Limiter	York	MTS-IMP-136	261115-001-0024	Sep.12,2016	Sep.11,2017
4.	Cable	LARGE	RF300	-	Sep.12,2016	Sep.11,2017
5	Universal Radio Communication Tester	R&S	CMU 200	112461	Apr.13,2016	Apr.12,2017
3m Semi-anechoic Chamber for Radiation Emissions Test site 1#						
Item	Equipment	Manufacturer	Model No.	Serial No.	Last Calibration Date	Calibration Due Date
1	Spectrum Analyzer	R&S	FSP	100091	Apr.29, 2016	Apr.28, 2017
2	Active Loop Antenna	Beijing Dazhi	ZN30900A	-	Apr.09,2016	Apr.08,2017
3	Trilog Broadband Antenna	SCHWARZBECK	VULB9163	336	Apr.09,2016	Apr.08,2017
4	Coaxial Cable (below 1GHz)	Top	TYPE16(13M)	-	Sep.12,2016	Sep.11,2017
5	Broad-band Horn Antenna	SCHWARZBECK	BBHA 9120 D	667	Apr.09,2016	Apr.08,2017
6	Broad-band Horn Antenna	SCHWARZBECK	BBHA 9170	335	Apr.09,2016	Apr.08,2017
7	Broadband Preamplifier	COMPLIANCE DIRECTION	PAP-1G18	2004	Apr.13,2016	Apr.12,2017
8	Coaxial Cable (above 1GHz)	Top	1GHz-25GHz	EW02014-7	Apr.13,2016	Apr.12,2017
9	Universal Radio Communication Tester	R&S	CMU 200	112461	Apr.13,2016	Apr.12,2017
10	Signal Generator	R&S	SMR20	100046	Sep.12,2016	Sep.11,2017

11	Smart Antenna	SCHWARZBECK	HA08	-	Apr.09,2016	Apr.08,2017
12.	Universal Radio Communication Tester	R&S	CMW 500	127818	Apr.13,2016	Apr.12,2017
<b>3m Semi-anechoic Chamber for Radiation Emissions Test site 2#</b>						
Item	Equipment	Manufacturer	Model No.	Serial No	Last Calibration Date	Calibration Due Date
1	Test Receiver	R&S	ESCI	101296	Apr.13,2016	Apr.12,2017
2	Trilog Broadband Antenna	SCHWARZBECK	VULB9160	9160-3325	Apr.09,2016	Apr.08,2017
3	Amplifier	Compliance pirection systems inc	PAP-0203	22024	Apr.13,2016	Apr.12,2017
4	Cable	HUBER+SUHNER	CBL2	525178	Apr.13,2016	Apr.12,2017

## 7.2 Description of Support Units

Equipment	Manufacturer	Model No.	Series No.
MacBook Air	APPLE	A1465	C17KTQDNF5N7
Power Supply	LPS DELTA ELECTRNICS UIANG CO.,LTD	ADP-45GD	-

## 7.3 Measurement Uncertainty

Test Item	Frequency Range	Uncertainty	Note
Conduction disturbance	150kHz~30MHz	±3.64dB	(1)
Radiation Emission	30MHz~1000MHz	±5.03dB	(1)
	1GHz~18GHz	±5.47dB	(1)
Confidence interval: 95%. Confidence factor:k=2			



## 8 Emission Test Results

### 8.1 Power Line Conducted Emission, 150kHz to 30MHz

Test Requirement ..... : FCC PART 15, SUBPART B

Test Method ..... : ANSI C63.4

Test Result ..... : Pass

Frequency Range ..... : 150kHz to 30MHz

Class ..... : Class B

Limit ..... :

Frequency (MHz)	Limit (dB $\mu$ )	
	Quasi peak	Average
0.15 to 0.5	66 to 56*	56 to 46*
0.5 to 5	56	46
5 to 30	60	50

#### 8.1.1 E.U.T. Operation

Operating Environment:

Temperature ..... : 23°C

Humidity ..... : 53.6%RH

Atmospheric Pressure..... : 101kPa

EUT Operation:

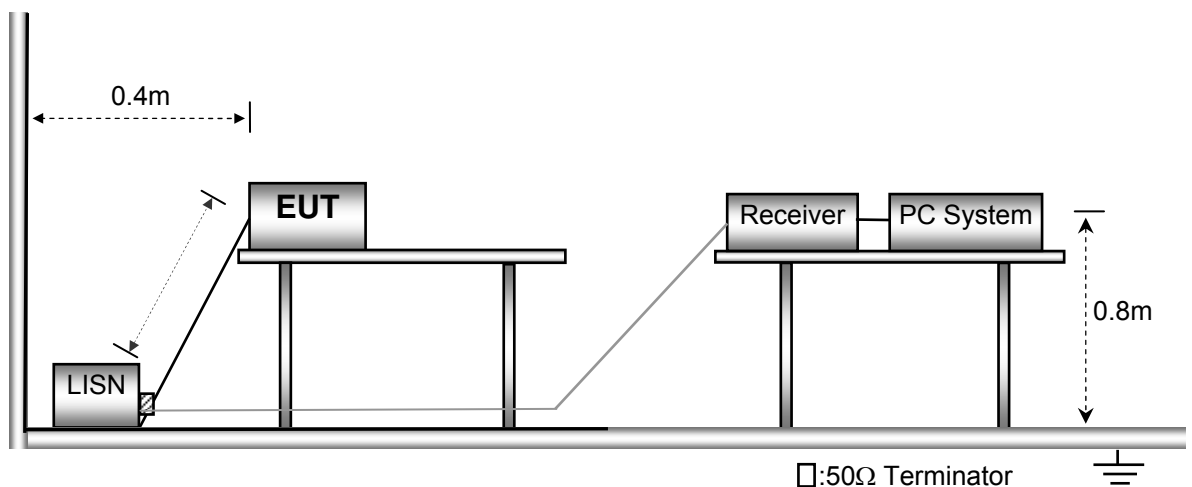
Input Voltage..... : DC 5V by Adapter input AC 120V/60Hz

Operating Mode ..... : Data transmitting mode, Earphone mode, Adapter mode

Remark..... : The worse case Data transmitting mode is under the condition of AC 120V/60Hz adapter input and the data is shown as follow.

#### 8.1.2 Block Diagram of Test Setup

The Mains Terminals Disturbance Voltage tests were performed in accordance with the ANSI C63.4 .

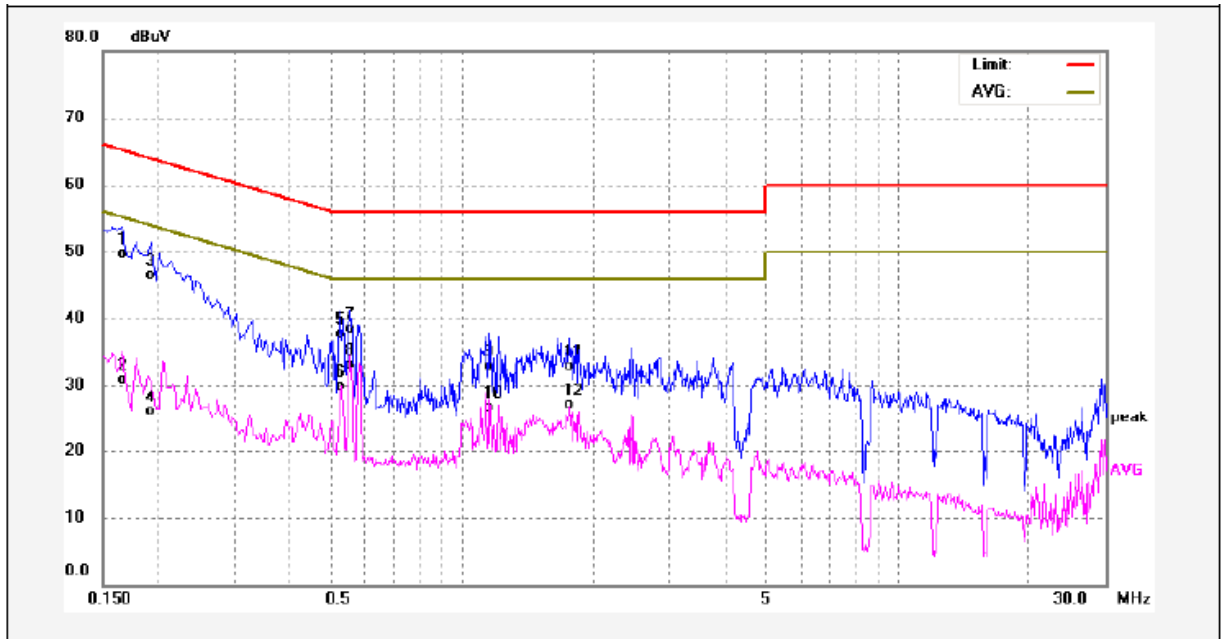


### 8.1.3 Measurement Data

The maximised peak emissions from the EUT was scanned and measured for both the Live and Neutral Lines. Quasi-peak & average measurements were performed if peak emissions were within 6dB of the average limit line. According to the data in section 5.1.4, the EUT complied with the FCC PART 15, SUBPART B standards.

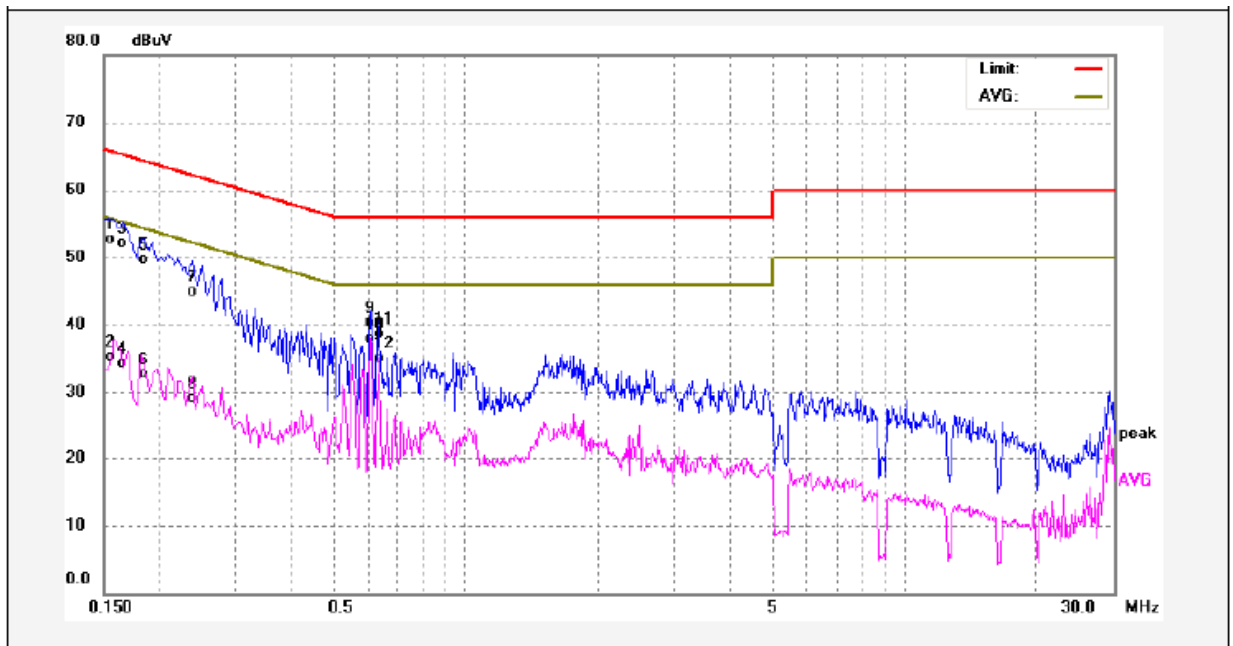
### 8.1.4 Power Line Conducted Emission Test Data

Live Line:



No.	Freq. (MHz)	Reading (dBuV)	Factor (dB)	Result (dBuV)	Limit dBuV	Margin (dB)	Detector	Remark
1	0.1660	39.72	9.90	49.62	65.15	-15.53	QP	
2	0.1660	21.01	9.90	30.91	55.15	-24.24	AVG	
3	0.1940	36.69	9.87	46.56	63.86	-17.30	QP	
4	0.1940	16.15	9.87	26.02	53.86	-27.84	AVG	
5	0.5260	27.68	10.07	37.75	56.00	-18.25	QP	
6	0.5260	19.91	10.07	29.98	46.00	-16.02	AVG	
7	0.5540	28.36	10.07	38.43	56.00	-17.57	QP	
8	0.5540	23.08	10.07	33.15	46.00	-12.85	AVG	
9	1.1580	22.83	10.05	32.88	56.00	-23.12	QP	
10	1.1580	16.63	10.05	26.68	46.00	-19.32	AVG	
11	1.7660	22.77	10.18	32.95	56.00	-23.05	QP	
12	1.7660	16.85	10.18	27.03	46.00	-18.97	AVG	

Neutral Line:



No.	Freq. (MHz)	Reading (dBuV)	Factor (dB)	Result (dBuV)	Limit dBuV	Margin (dB)	Detector	Remark
1	0.1539	42.75	10.02	52.77	65.78	-13.01	QP	
2	0.1539	25.36	10.02	35.38	55.78	-20.40	AVG	
3	0.1660	42.13	9.90	52.03	65.15	-13.12	QP	
4	0.1660	24.34	9.90	34.24	55.15	-20.91	AVG	
5	0.1860	39.79	9.87	49.66	64.21	-14.55	QP	
6	0.1860	22.75	9.87	32.62	54.21	-21.59	AVG	
7	0.2380	34.89	9.98	44.87	62.16	-17.29	QP	
8	0.2380	19.15	9.98	29.13	52.16	-23.03	AVG	
9	0.6060	30.33	10.06	40.39	56.00	-15.61	QP	
10	0.6060	27.92	10.06	37.98	46.00	-8.02	AVG	
11	0.6340	28.69	10.08	38.77	56.00	-17.23	QP	
12	0.6340	24.99	10.08	35.07	46.00	-10.93	AVG	

### 8.2 Radiation Emission, 30MHz to 1000MHz

Test Requirement ..... : FCC PART 15, SUBPART B  
 Test Method ..... : ANSI C63.4  
 Test Result ..... : Pass  
 Frequency Range ..... : 30MHz to 1000MHz  
 Class. : Class B  
 Limit..... :

Frequency (MHz)	Distance (Meter)	Limit (dB $\mu$ V/m
		Quasi-peak
30 to 88	3	40
88 to 216	3	43.5
216 to 960	3	46
960 to 1000	3	54

#### 8.2.1 E.U.T. Operation

Operating Environment:

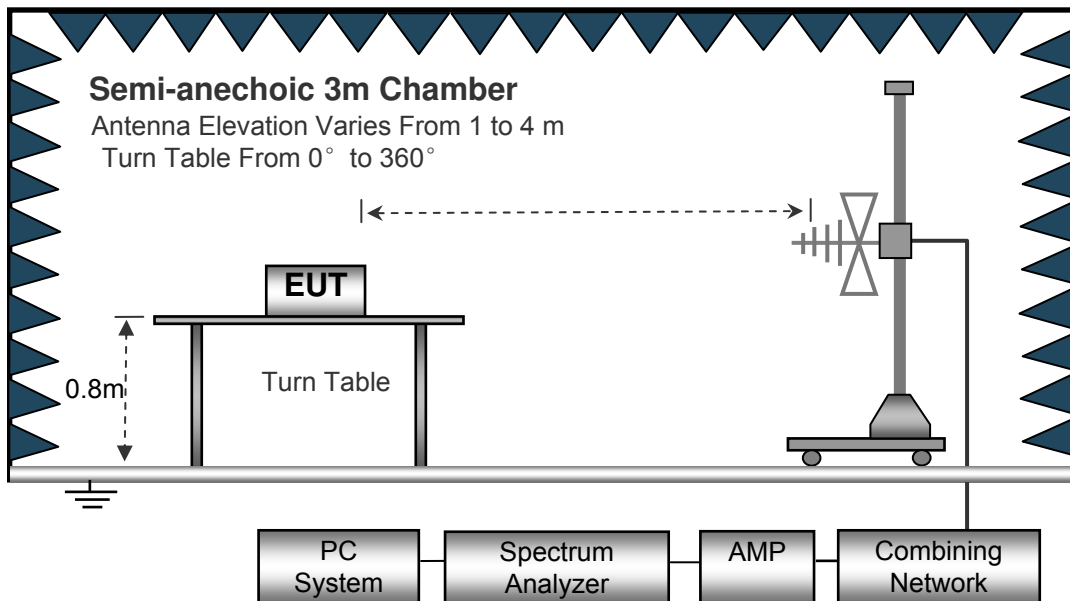
Temperature ..... : 22.5°C  
 Humidity ..... : 52.6%RH  
 Atmospheric Pressure..... : 101.2kPa

EUT Operation:

Input Voltage..... : DC 5V by Adapter input AC 120V/60Hz  
 Operating Mode ..... : Data transmitting with PC mode, Earphone mode, Adapter mode  
 Remark..... : The worse case Data transmitting with PC mode is under the condition of AC 120V/60Hz adapter input and the data is shown as follow.

#### 8.2.2 Block Diagram of Test Setup

The radiated emission tests were performed in the 3m Semi- Anechoic Chamber test site, using the setup accordance with the ANSI C63.4.

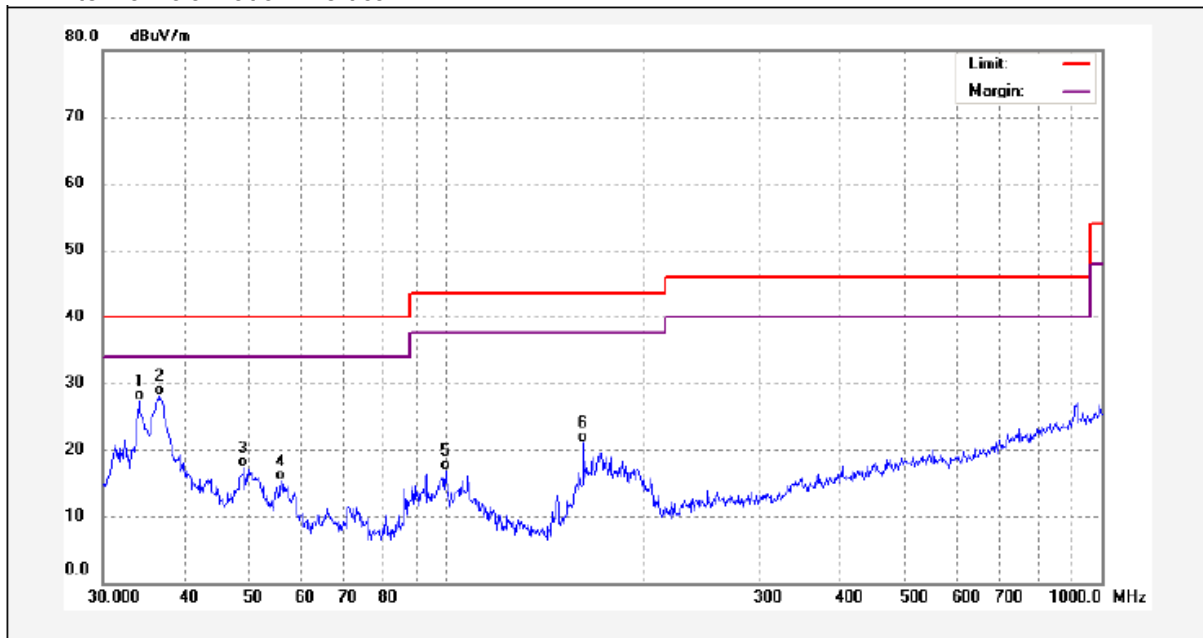


### 8.2.3 Measurement Data

The maximised peak emissions from the EUT was scanned and measured for both the Antenna Vertical Polarization and Antenna Horizontal Polarization. Quasi-peak measurements were performed if peak emissions were within 6dB of the Quasi-peak limit line.

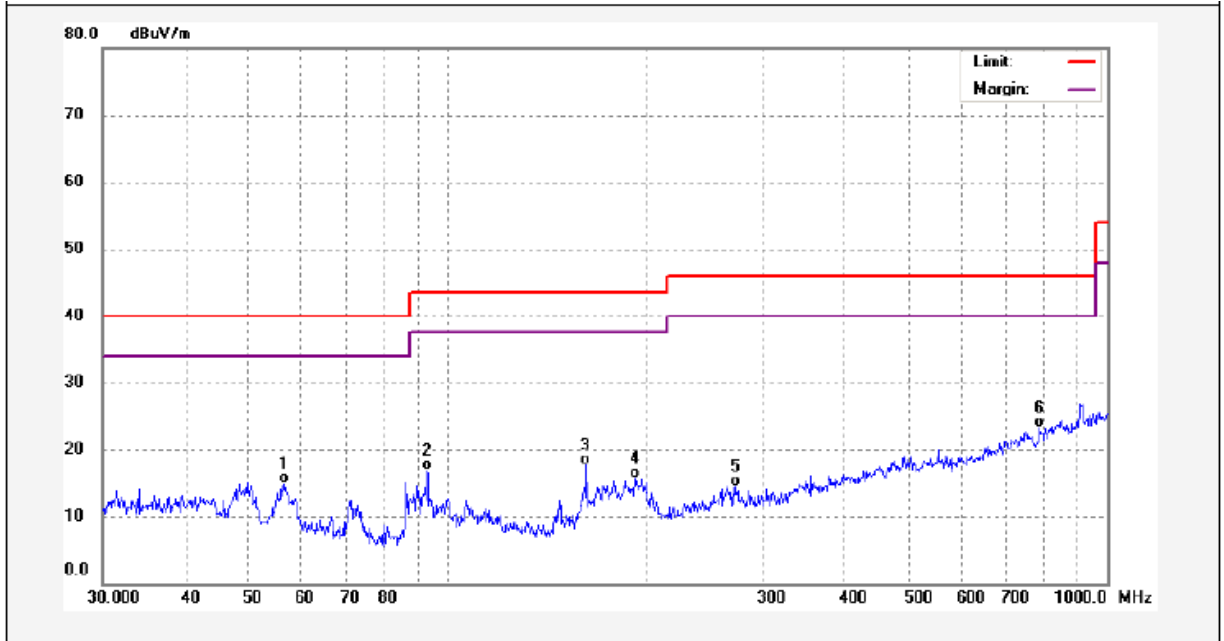
### 8.2.4 Radiated Emission Test Data, 30MHz to 1000MHz

Antenna Polarization: Vertical



No.	Freq. (MHz)	Reading (dBuV/m)	Factor (dB)	Result (dBuV/m)	Limit (dBuV/m)	Margin (dB)	Detector	Remark
1	34.0365	43.55	-16.16	27.39	40.00	-12.61	QP	
2	36.5092	43.76	-15.64	28.12	40.00	-11.88	QP	
3	49.1865	33.83	-16.60	17.23	40.00	-22.77	QP	
4	56.0007	33.18	-17.93	15.25	40.00	-24.75	QP	
5	99.8777	35.07	-18.19	16.88	43.50	-26.62	QP	
6	162.0414	40.05	-18.98	21.07	43.50	-22.43	QP	

Antenna Polarization: Horizontal



No.	Freq. (MHz)	Reading (dBuV/m)	Factor (dB)	Result (dBuV/m)	Limit (dBuV/m)	Margin (dB)	Detector	Remark
1	56.5929	33.14	-18.20	14.94	40.00	-25.06	QP	
2	93.1132	35.11	-18.17	16.94	43.50	-26.56	QP	
3	162.0414	36.64	-18.98	17.66	43.50	-25.84	QP	
4	192.4186	33.00	-17.30	15.70	43.50	-27.80	QP	
5	273.2341	30.37	-15.82	14.55	46.00	-31.45	QP	
6	790.6188	29.70	-6.48	23.22	46.00	-22.78	QP	

### 8.3 Radiation Emission, Above 1000MHz

Test Requirement ..... : FCC PART 15, SUBPART B  
 Test Method ..... : ANSI C63.4  
 Test Result..... : Pass  
 Frequency Range ..... : 1GHz~18GHz  
 Class. : Class B  
 Limit. .... :

Frequency Range (MHz)	Distance (Meter)	Average Limit dB(uV/m)	Peak Limit (dBUV/m)
Above 1GHz	3	54	74

#### 8.3.1 E.U.T. Operation

Operating Environment:

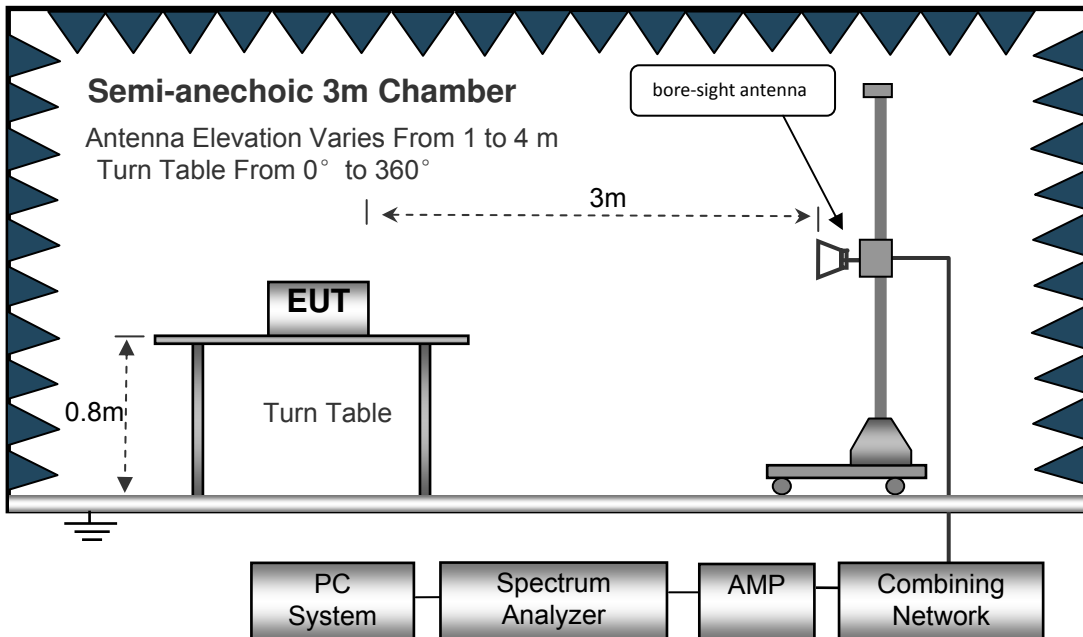
Temperature..... : 22.4°C  
 Humidity ..... : 52.3%RH  
 Atmospheric Pressure..... : 101.3kPa

EUT Operation:

Input Voltage ..... : DC 5V by Adapter input AC 120V/60Hz  
 Operating Mode ..... : Data transmitting with PC mode ,Earphone mode, Adapter mode  
 Remark..... : The worse case is Vido playing mode and the data is shown as follow.

#### 8.3.2 Block Diagram of Test Setup

The radiated emission tests were performed in the 3m Semi- Anechoic Chamber test site, using the setup accordance with the ANSI C63.4.

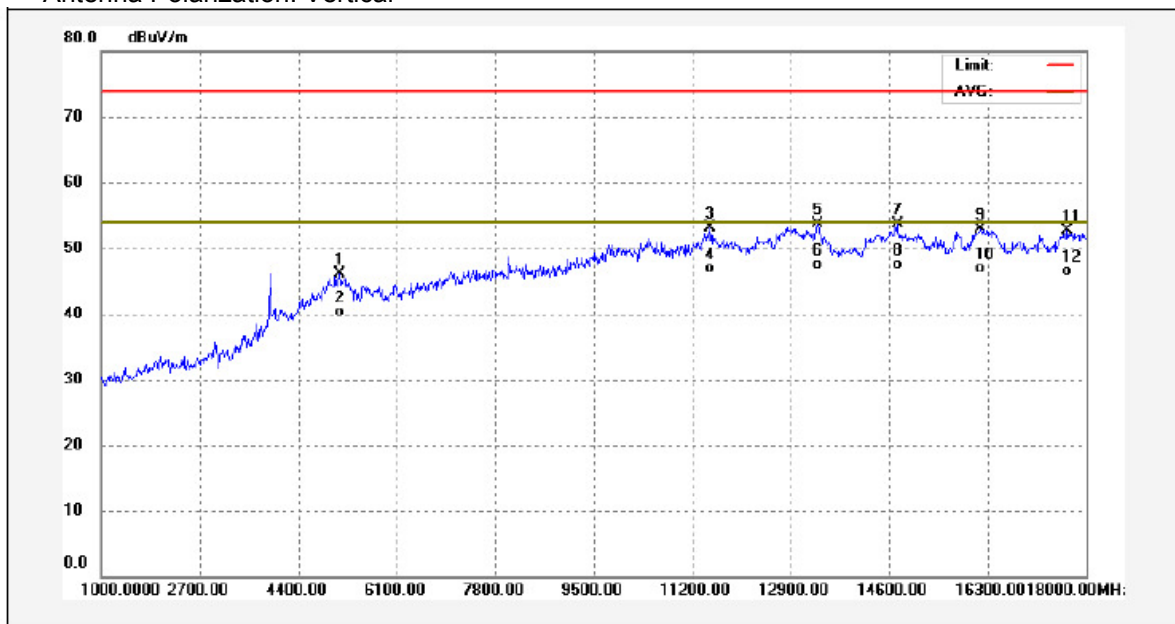


### 8.3.3 Measurement Data

The maximised peak emissions from the EUT was scanned and measured for both the Antenna Vertical Polarization and Antenna Horizontal Polarization. Average measurements were performed if peak emissions were within 6dB of the average limit line

### 8.3.4 Radiated Emission Test Data, Above 1GHz

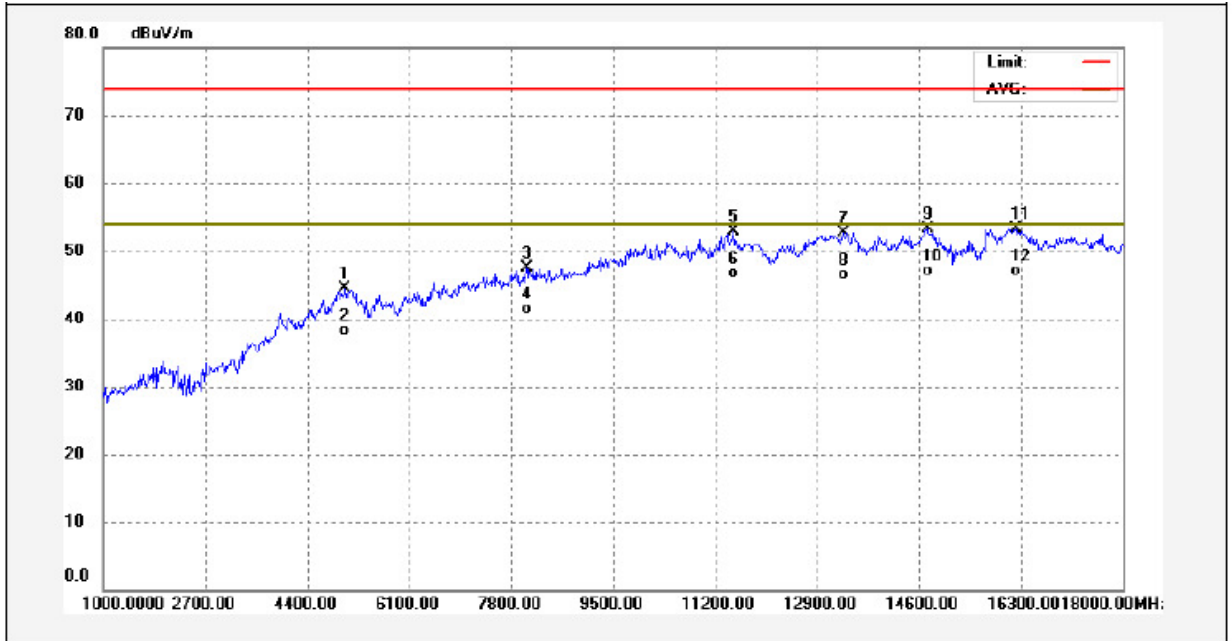
Antenna Polarization: Vertical



No.	Freq. (MHz)	Reading (dBuV/m)	Factor (dB)	Result (dBuV/m)	Limit (dBuV/m)	Margin (dB)	Detector	Remark
1	5114.000	47.44	-1.26	46.18	74.00	-27.82	peak	
2	5114.000	41.59	-1.26	40.33	54.00	-13.67	AVG	
3	11506.000	45.98	7.06	53.04	74.00	-20.96	peak	
4	11506.000	39.81	7.06	46.87	54.00	-7.13	AVG	
5	13359.000	45.74	7.88	53.62	74.00	-20.38	peak	
6	13359.000	39.58	7.88	47.46	54.00	-6.54	AVG	
7	14736.000	43.42	10.33	53.75	74.00	-20.25	peak	
8	14736.000	37.26	10.33	47.59	54.00	-6.41	AVG	
9	16181.000	43.86	9.12	52.98	74.00	-21.02	peak	
10	16181.000	37.71	9.12	46.83	54.00	-7.17	AVG	
11	17677.000	38.60	14.05	52.65	74.00	-21.35	peak	
12	17677.000	32.45	14.05	46.50	54.00	-7.50	AVG	



Antenna Polarization: Horizontal



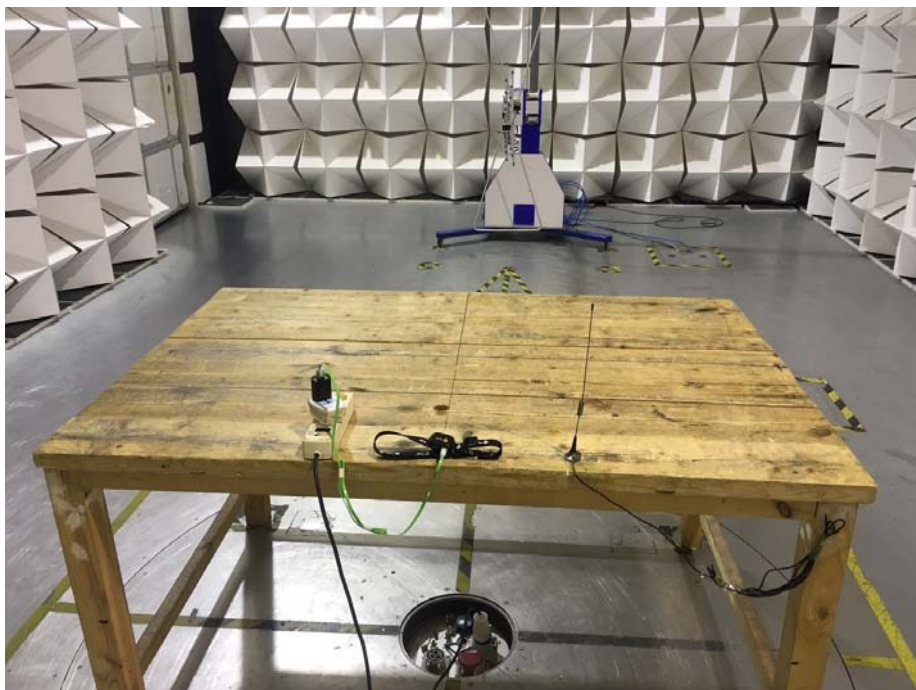
No.	Freq. (MHz)	Reading (dBuV/m)	Factor (dB)	Result (dBuV/m)	Limit (dBuV/m)	Margin (dB)	Detector	Remark
1	5029.000	45.39	-0.94	44.45	74.00	-29.55	peak	
2	5029.000	39.24	-0.94	38.30	54.00	-15.70	AVG	
3	8055.000	46.16	1.43	47.59	74.00	-26.41	peak	
4	8055.000	40.02	1.43	41.45	54.00	-12.55	AVG	
5	11506.000	45.79	7.06	52.85	74.00	-21.15	peak	
6	11506.000	39.55	7.06	46.61	54.00	-7.39	AVG	
7	13342.000	44.89	7.83	52.72	74.00	-21.28	peak	
8	13342.000	38.74	7.83	46.57	54.00	-7.43	AVG	
9	14736.000	42.96	10.33	53.29	74.00	-20.71	peak	
10	14736.000	36.79	10.33	47.12	54.00	-6.88	AVG	
11	16215.000	44.13	9.21	53.34	74.00	-20.66	peak	
12	16215.000	37.98	9.21	47.19	54.00	-6.81	AVG	

## 9 Photographs – Test Setup

### 9.1 Photograph –Power Line Conducted Emission Test Setup



### 9.2 Photograph – Radiated Emission Test Setup for 30MHz~1000MHz



### 9.3 Photograph – Radiated Emission Test Setup for above 1GHz



## 10 Photographs - Constructional Details

### 10.1 External View





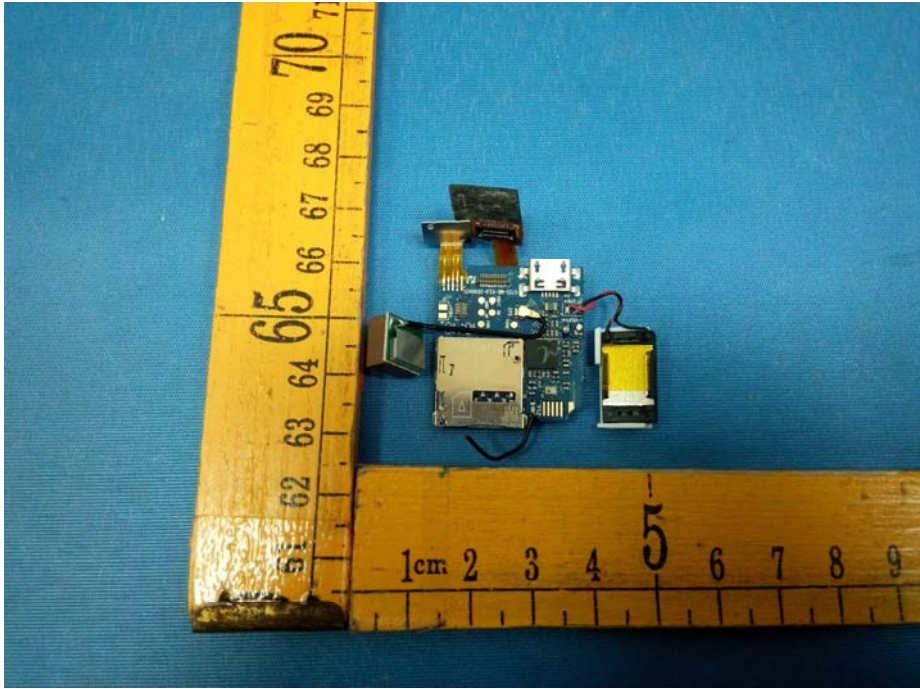


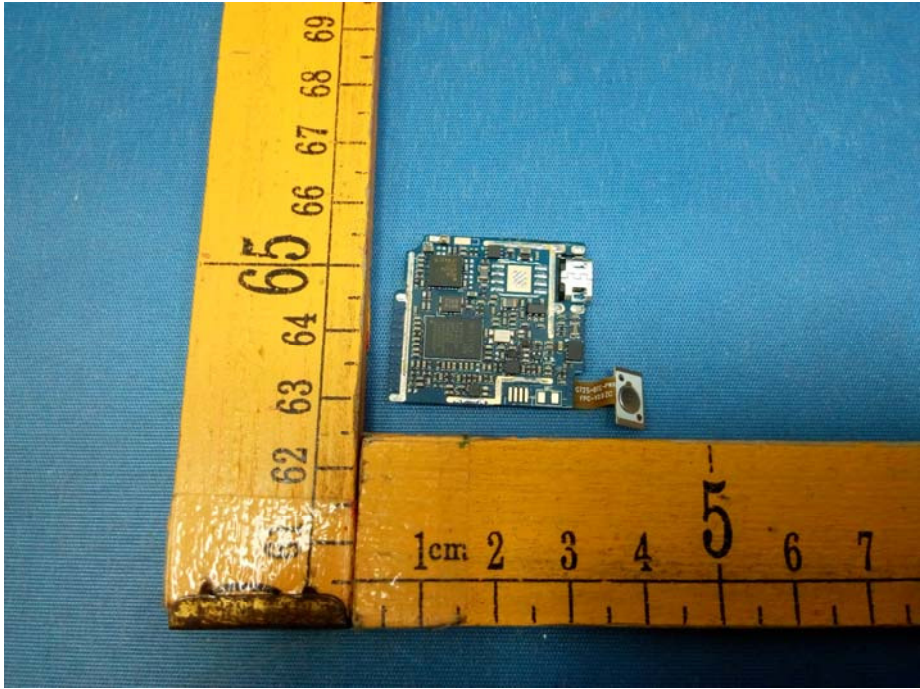
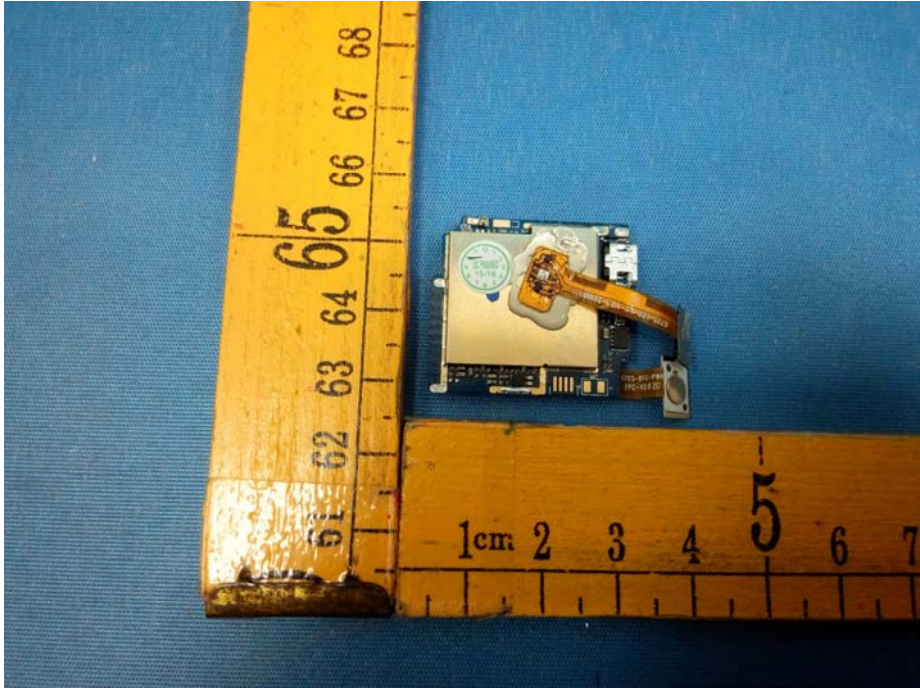


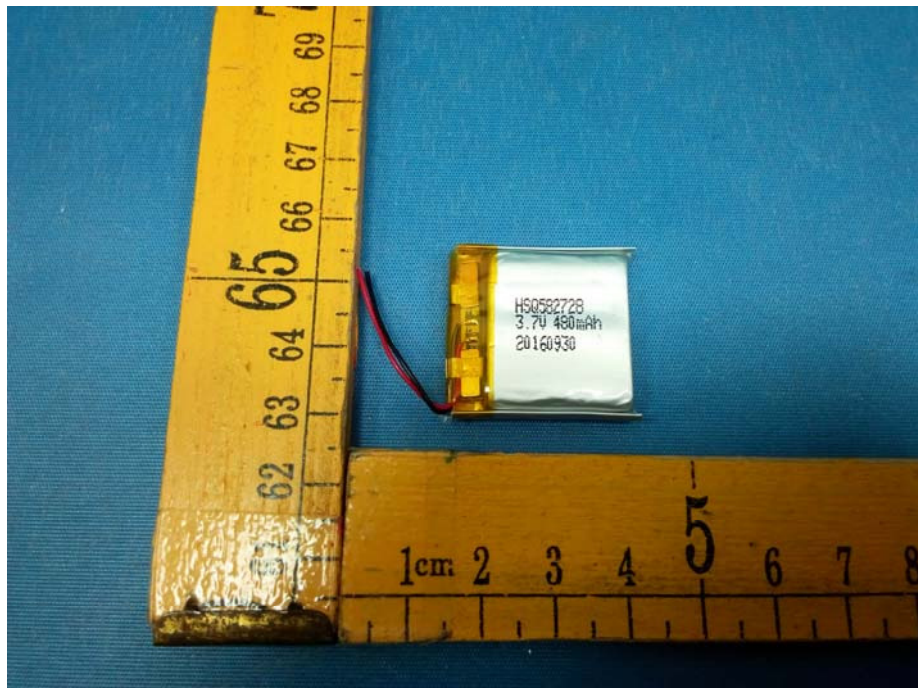
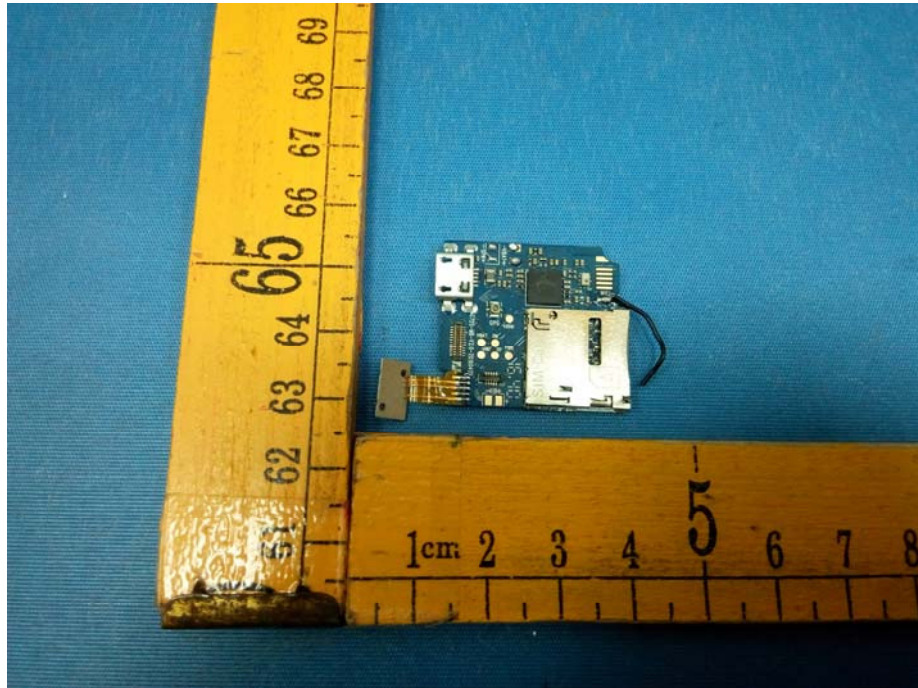
10.2 Internal View













====End of Report====