



WIFI FLOOD SENSOR WITH TEMPERATURE MEASUREMENT

USER GUIDE



Shelly® Flood by Allterco Robotics is intended to be placed in a room/area in order to be aware of liquid leakage, and monitor the temperature. Shelly Flood is battery powered, with battery life up to 18 months. Shelly may work as a standalone device or as an accessory to a home automation controller.

Specifications

Battery Type:

3V DC - CR123A

Battery Life:

Up to 18 months

Electrical consumption:

• Static $\leq 5\mu A$

• Awake $\leq 250mA$

Temperature measurement range:

-40°C + 60 °C ($\pm 1^\circ C$)

Working temperature:

-40°C + 60 °C

Dimensions (HxWxL):

70x19x19 mm

Radio protocol:

WiFi 802.11 b/g/n

Radio signal power:

1mW

Frequency:

2400 - 2500 MHz;

Operational range:

• up to 30 m outdoors

• up to 15 m indoors

Complies with EU standards:

• RE Directive 2014/53/EU

• LVD 2014/35/EU

• EMC 2004/108/WE

• RoHS2 2011/65/EU

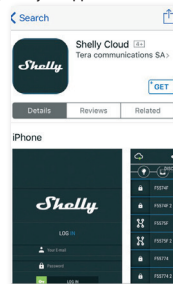


MOBILE APPLICATION FOR SHELLY®



The Shelly Cloud mobile application

Shelly Cloud gives you opportunity to control and adjust all Shelly® devices from anywhere in the world. The only thing you need is connection to the Internet and our mobile application, installed on your smartphone or tablet. To install the application please visit Google Play or App Store.



Step 3

- **If using iOS:** you will see the following screen (fig. 4) On your iOS device open Settings > WiFi and connect to the WiFi network created by Shelly, e.g. ShellyFlood-35FA58.
- **If using Android (fig. 5)** your phone will automatically scan and include all new Shelly devices in the WiFi network, that you defined.



Upon successful Device Inclusion to the WiFi network you will see the following pop-up:



Step 4:

Approximately 30 seconds after discovery of any new devices on the local WiFi network, a list will be displayed by default in the "Discovered Devices" room.



Installation Instructions

CAUTION! Before beginning the installation please read the accompanying documentation carefully and completely. Failure to follow recommended procedures could lead to malfunction, danger to your life or violation of the law. Allterco Robotics is not responsible for any loss or damage in case of incorrect installation or operation of this device.

CAUTION! Use the Device only with batteries which comply with all applicable regulations. Inappropriate batteries may cause a short circuit in the Device, which may damage it.

CAUTION! Do not allow children to play with the device, especially with the Power Button. Keep the devices for remote control of Shelly (mobile phones, tablets, PCs) away from children.

Control your home with your voice

All Shelly devices are compatible with Amazons' Alexa and Google's assistant. Please see our step-by-step guides on:

<https://shelly.cloud/compatibility/Alexa>

<https://shelly.cloud/compatibility/Assistant>

Device „Wake Up“

To open the device, twist the top and bottom part of the case counter clockwise.

Press the Button. The LED should flash slowly. This means that Shelly is in AP mode. Press the Button again and the LED will turn off and Shelly will be in „sleep“ mode.

LED States

• LED flashing slowly - AP Mode

• LED flashing quickly - STA Mode (No Cloud)

• LED still - STA Mode (Connected to Cloud)

• LED flashing quickly - FW Update (while in STA mode and connected to Cloud)

Factory Reset

You can return your Shelly Flood to its Factory Settings by pressing and holding the Button for 10 seconds. Upon successful factory reset the LED will flash slowly.

Additional Features

Shelly allows control via HTTP from any other device, home automation controller, mobile app or server. For more information about the REST control protocol, please visit:

www.shelly.cloud or send a request to developers@shelly.cloud

Registration

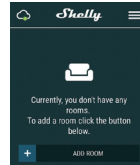
The first time you open the Shelly Cloud mobile app, you have to create an account which can manage all your Shelly® devices.

Forgotten Password

In case you forget or lose your password, just enter the e-mail address you have used in your registration. You will then receive instructions on how to change your password.

WARNING! Be careful when you type your e-mail address during the registration, as it will be used in case you forgot your password.

After registering, create your first room (or rooms), where you are going to add and use your Shelly devices. Shelly Cloud allows easy control and monitoring using a mobile phone, tablet or PC.



Device Inclusion

To add a new Shelly device, connect it to the power grid following the Installation Instructions included with the Device.

Step 1

Place your Shelly Flood in the room where you want to use it. Press the Button - the LED should turn on and flash slowly.

WARNING! If the LED does not flash slowly, press and hold the Button for at least 10 seconds. The LED should then flash quickly. If not, please repeat or contact our customer support at: support@shelly.cloud

Step 2

Choose "Add Device".

In order to add more devices later, use the Menu at the top right corner of the main screen and click "Add Device".

Type the name and password for the WiFi network, to which you want to add Shelly.

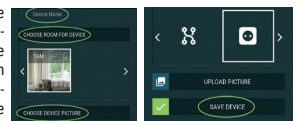
Step 5:

Select Discovered Devices and choose the Shelly device you want to include in your account.



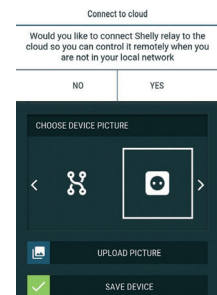
Step 6:

Enter a name for the Device. Choose a Room, in which the device has to be positioned. You can choose an icon or upload a picture to make it easier to recognize. Press "Save Device".



Step 7:

To enable connection to the Shelly Cloud service for remote control and monitoring of the Device, press "yes" on the following pop-up.



Shelly Devices Settings

After your Shelly device is included in the app, you can control it, change its settings and automate the way it works. To enter the details menu of the device, click on it's name.

From there you may control the device, as well as edit its appearance and settings.



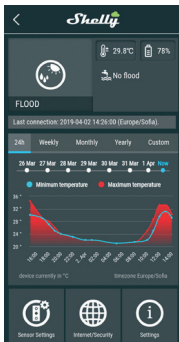
Sensor settings

Temperature Units: Setting for change of the temperature units.

- Celsius
- Fahrenheit

Temperature Threshold: You can define the temperature Threshold in which Shelly Flood will "wake up" and send status. The value can be from 0.5° up to 10°, or you can disable it.

Mute: Use this to mute the sound, when Shelly Flood detects leakage.



Internet/Security

WiFi Mode - Client: Allows the device to connect to an available WiFi network. After typing the details in the respective fields, press Connect.

WiFi Mode - Access Point: Configure Shelly to create a Wi-Fi Access point. After typing the details in the respective fields, press Create Access Point.

Restrict Login: Restrict the web interface (IP in the Wi-Fi network) of Shelly with a Username and Password. After typing the details in the respective fields, press Restrict Login.

Settings

Firmware Update

Update the firmware of Shelly, when a new version is released.

Time Zone and Geo-location

Enable or Disable the automatic detection of Time Zone and Geo-location.

Factory Reset

Return Shelly to its factory default settings.

Device Information

Here you can see the:

- Device ID - Unique ID of Shelly
- Device IP - The IP of Shelly in your Wi-Fi network
- Device Type - The type of your Shelly device
- WiFi Name - The name of the WiFi network to which Shelly is connected
- WiFi Signal - The signal strength of the WiFi network to which Shelly is connected

Edit Device

From here you can edit:

- Device Name
- Device Room
- Device Picture

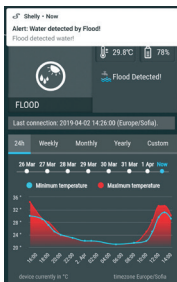
When you are done, press **Save Device**.

Modes:

• Alarm mode* - In this mode, Shelly Flood will activate the sound alarm when it detects any leakage, and will send notification every 5 minutes.

• Rain Mode - In this mode, Shelly Flood will only send notification once leakage is detected, and second time when the leakage is not present.

*This is the default mode of Shelly Flood.



The Embedded Web Interface

Even without the mobile app Shelly can be set and controlled through a browser and connection of a mobile phone or tablet.

Abbreviations used:

Shelly-ID - consists of 6 or more characters. It may include numbers and letters, for example **35FA58**.

SSID - the name of the WiFi network, created by the device, for example **ShellyFlood-35FA58**.

Access Point (AP) - in this mode in Shelly creates its own WiFi network.

Client Mode (CM) - in this mode in Shelly connects to another WiFi network.

Installation/Initial inclusion

Step 1

Place Shelly in the room where you want to use it. Open it and press the Button. The LED should flash slowly.

⚠ To open the device, twist the top and bottom part of the case counter clockwise.

⚠ **CAUTION!** If the LED does not flash slowly, press and hold the Button for 10 seconds. Upon successful factory reset, the LED will flash slowly.

Step 2

When the LED is flashing slowly, Shelly has created a WiFi network, with name such as **ShellyFlood-35FA58**. Connect to it.

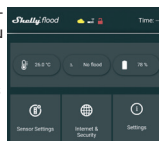
Step 3

Type **192.168.33.1** into the address field of your browser to load the web interface of Shelly.

General - Home Page

This is the home page of the embedded web interface. Here you will see information about:

- Current Temperature
- Current Flood detection status
- Current battery percentage
- Connection to Cloud
- Present time
- Settings



Sensor Settings

Temperature Units: Setting for change of the temperature units.

- Celsius
- Fahrenheit

Temperature Threshold: Define the temperature Threshold in which Shelly Flood will "wake up" and send status. The value can be from 1° up to 5° or you can disable it.

Internet/Security

WiFi Mode-Client: Allows the device to connect to an available WiFi network. After typing the details in the fields, press **Connect**.

WiFi Mode-Access Point: Configure Shelly to create a Wi-Fi Access point. After typing the details in the fields, press **Create Access Point**.

Restrict Login: Restrict the web interface of Shelly with a Username and Password. After typing the details in the respective fields, press Restrict Shelly.

SNTP Server: You can change the default SNTP server. Enter the address, and click Save.

Advanced Developer Settings: Here you can change the action execution:

- Via CoAP (CoIoT)
- Via MQTT

Cloud: You can Activate/Deactivate the connection to Shelly Cloud.

⚠ **ATTENTION:** To reset the device, press and hold the Button for at least 10 seconds. Upon successful factory reset, the LED will flash slowly.

Settings

Time Zone and Geo-location: Enable or Disable the automatic detection of Time Zone and Geo-location. If Disabled you can define it manually.

Firmware Upgrade: Shows present firmware version. If a newer version is available, you can update your Shelly by clicking Upload to install it.

Factory reset: Return Shelly to its factory settings.

Device Reboot: Reboots the device.

Device Info: Shows your device ID.

In Client Mode shows also your WiFi network name and WiFi signal strength.

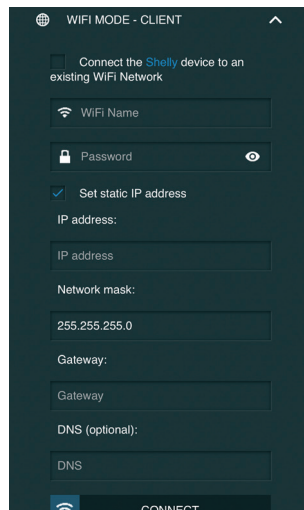
Battery Life Recommendations

For the best battery life we recommend you the following settings for Shelly Flood:

Sensor settings

- Temperature Threshold: 1°

Set a static IP address in the Wi-Fi network for Shelly from the embedded web interface. Go to **Internet/Security** -> **Sensor settings** and press on **Set static IP address**. After typing the details in the respective fields, press **Connect**.



Keep Shelly at the best distance possible to the Wi-Fi router.



Shelly H&T

Developers support

Our Facebook support group:

<https://www.facebook.com/groups/ShellyIoT-CommunitySupport/>

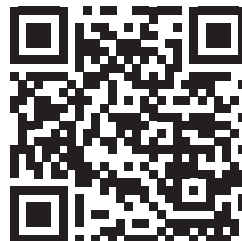
Our support e-mail:

support@shelly.cloud

Our website:

www.shelly.cloud

You can find the latest PDF version of this user guide here:



FCC Warning

This device complies with part 15 of the FCC rules. Operation is subject to the following two conditions: (1) this device may not cause harmful interference, and (2) this device must accept any interference received, including interference that may cause undesired operation.

Changes or modifications not expressly approved by the party responsible for compliance could void the user's authority to operate the equipment.

NOTE: This equipment has been tested and found to comply with the limits for a Class B digital device, pursuant to part 15 of the FCC Rules. These limits are designed to provide reasonable protection against harmful interference in a residential installation. This equipment generates uses and can radiate radio frequency energy and, if not installed and used in accordance with the instructions, may cause harmful interference to radio communications. However, there is no guarantee that interference will not occur in a particular installation. If this equipment does cause harmful interference to radio or television reception, which can be determined by turning the equipment off and on, the user is encouraged to try to correct the interference by one or more of the following measures:

- Reorient or relocate the receiving antenna.
- Increase the separation between the equipment and receiver.
- Connect the equipment into an outlet on a circuit different from that to which the receiver is connected.
- Consult the dealer or an experienced radio/TV technician for help.

Radiation Exposure Statement

This equipment complies with FCC radiation exposure limits set forth for an uncontrolled environment. This equipment should be installed and operated with minimum distance 20cm between the radiator and your body.