

Test Laboratory: Huatongwei International Inspection Co., Ltd.,SAR Lab

Date: 12/20/2018

WIFI 2.4G-Body

Communication System: UID 0, Generic WIFI (0); Frequency: 2437 MHz;Duty Cycle: 1:1

Medium parameters used (interpolated): $f = 2437$ MHz; $\sigma = 1.991$ S/m; $\epsilon_r = 53.023$; $\rho = 1000$ kg/m³

Phantom section: Flat Section

Ambient Temperature:22.7°C;Liquid Temperature:22.3°C;

DASY Configuration:

- Probe: EX3DV4 - SN7494; ConvF(8.08, 8.08, 8.08) @ 2437 MHz; Calibrated: 2/26/2018
- Sensor-Surface: 1.4mm (Mechanical Surface Detection)
- Electronics: DAE4 Sn1549; Calibrated: 4/25/2018
- Phantom: ELI V8.0 ; Type: QD OVA 004 AA ; Serial: 2078
- DASY52 52.10.2(1495); SEMCAD X 14.6.12(7450)

Rear/CH 6/Area Scan (121x121x1): Interpolated grid: dx=1.200 mm, dy=1.200 mm

Maximum value of SAR (interpolated) = 0.694 W/kg

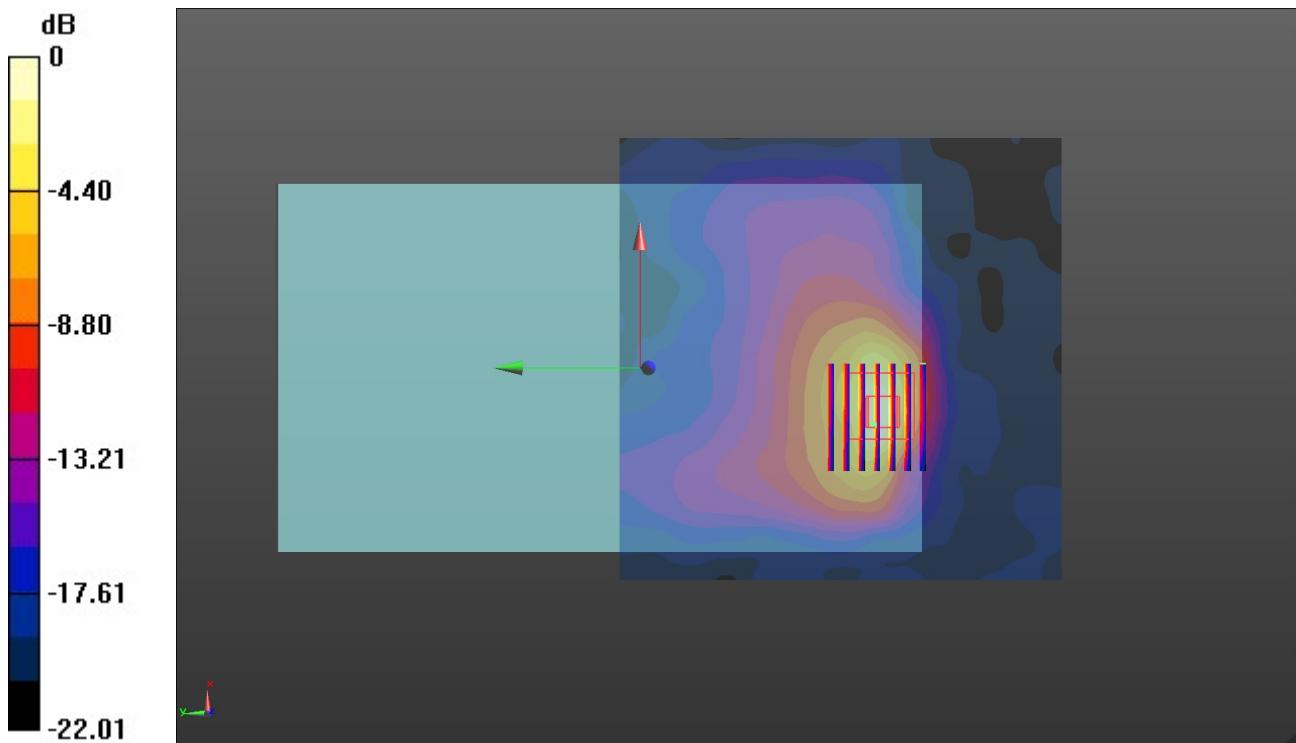
Rear/CH 6/Zoom Scan (8x7x7)/Cube 0: Measurement grid: dx=5mm, dy=5mm, dz=5mm

Reference Value = 1.497 V/m; Power Drift = -0.10 dB

Peak SAR (extrapolated) = 1.02 W/kg

SAR(1 g) = 0.414 W/kg; SAR(10 g) = 0.180 W/kg

Maximum value of SAR (measured) = 0.736 W/kg



0 dB = 0.736 W/kg = -1.33 dBW/kg

Test Laboratory: Huatongwei International Inspection Co., Ltd.,SAR Lab

Date: 12/11/2018

WIFI 5G U-NII-2A-Body

Communication System: UID 0, Generic WIFI (0); Frequency: 5260 MHz;Duty Cycle: 1:1

Medium parameters used: $f = 5260$ MHz; $\sigma = 5.481$ S/m; $\epsilon_r = 48.04$; $\rho = 1000$ kg/m³

Phantom section: Flat Section

Ambient Temperature:23.5°C;Liquid Temperature:22.9°C;

DASY Configuration:

- Probe: EX3DV4 - SN7494; ConvF(4.97, 4.97, 4.97) @ 5260 MHz; Calibrated: 2/26/2018
- Sensor-Surface: 1.4mm (Mechanical Surface Detection)
- Electronics: DAE4 Sn1549; Calibrated: 4/25/2018
- Phantom: ELI V8.0 ; Type: QD OVA 004 AA ; Serial: 2078
- DASY52 52.10.2(1495); SEMCAD X 14.6.12(7450)

Rear/CH 52/Area Scan (151x151x1): Interpolated grid: dx=1.000 mm, dy=1.000 mm

Maximum value of SAR (interpolated) = 2.67 W/kg

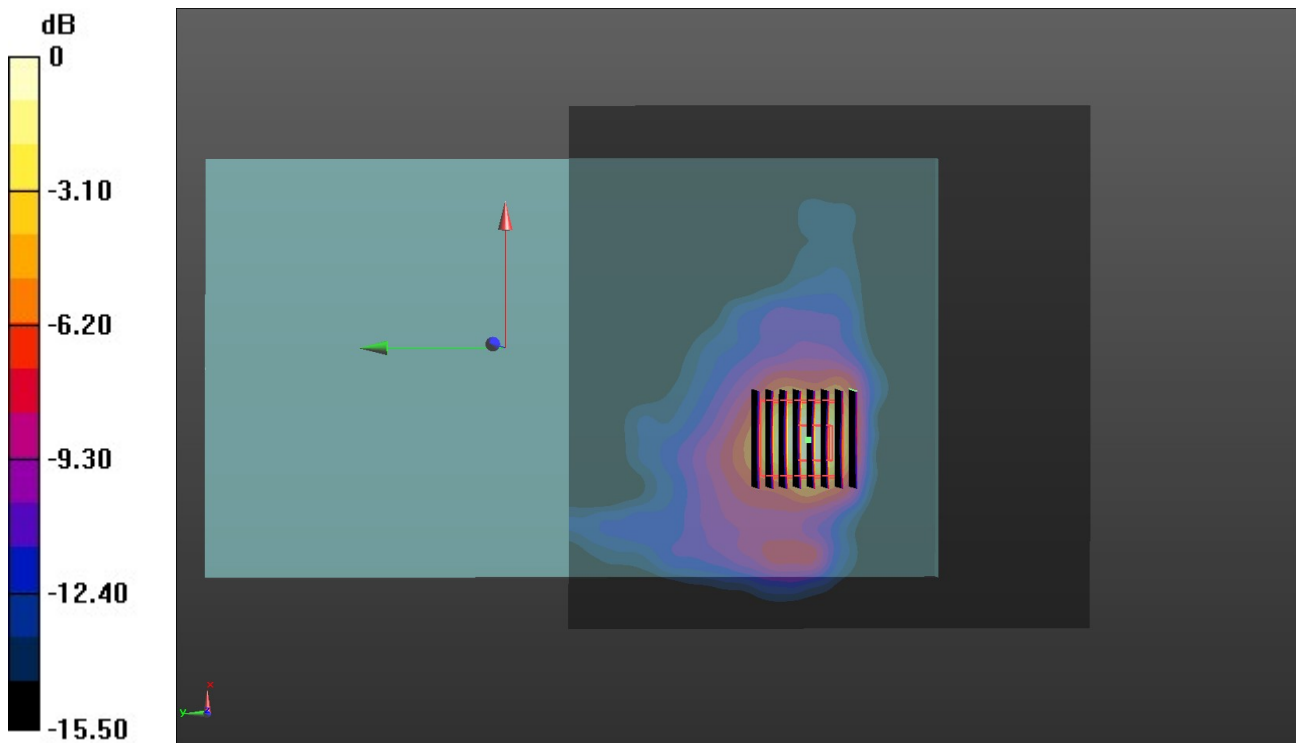
Rear/CH 52/Zoom Scan (8x8x6)/Cube 0: Measurement grid: dx=4mm, dy=4mm, dz=2mm

Reference Value = 1.828 V/m; Power Drift = 0.10 dB

Peak SAR (extrapolated) = 4.43 W/kg

SAR(1 g) = 1.1 W/kg; SAR(10 g) = 0.398 W/kg

Maximum value of SAR (measured) = 2.44 W/kg



0 dB = 2.44 W/kg = 3.87 dBW/kg

Test Laboratory: Huatongwei International Inspection Co., Ltd.,SAR Lab

Date: 12/11/2018

WIFI 5G U-NII-2C-Body

Communication System: UID 0, Generic WIFI (0); Frequency: 5500 MHz;Duty Cycle: 1:1

Medium parameters used: $f = 5500$ MHz; $\sigma = 5.825$ S/m; $\epsilon_r = 47.515$; $\rho = 1000$ kg/m³

Phantom section: Flat Section

Ambient Temperature:22.7°C;Liquid Temperature:22.3°C;

DASY Configuration:

- Probe: EX3DV4 - SN7494; ConvF(4.62, 4.62, 4.62) @ 5500 MHz; Calibrated: 2/26/2018
- Sensor-Surface: 1.4mm (Mechanical Surface Detection)
- Electronics: DAE4 Sn1549; Calibrated: 4/25/2018
- Phantom: ELI V8.0 ; Type: QD OVA 004 AA ; Serial: 2078
- DASY52 52.10.2(1495); SEMCAD X 14.6.12(7450)

Rear/CH 100/Area Scan (151x151x1): Interpolated grid: dx=1.000 mm, dy=1.000 mm

Maximum value of SAR (interpolated) = 0.978 W/kg

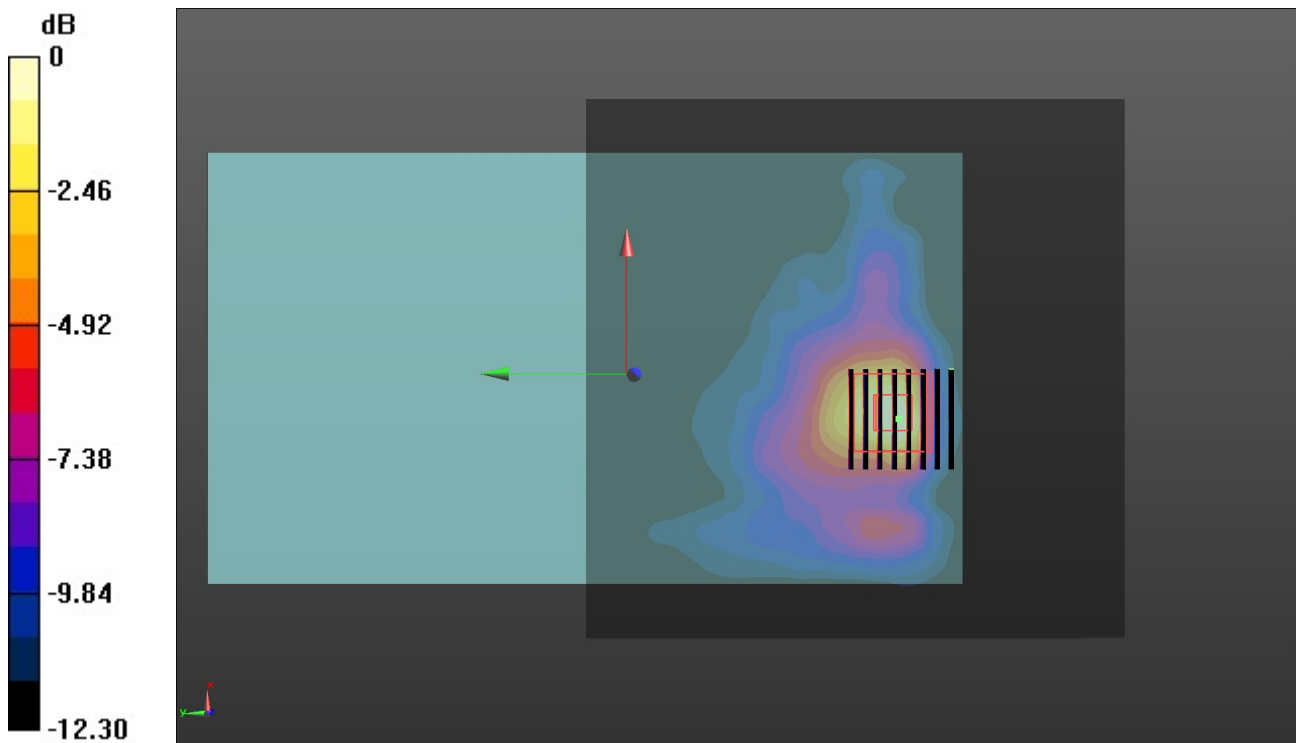
Rear/CH 100/Zoom Scan (8x8x6)/Cube 0: Measurement grid: dx=4mm, dy=4mm, dz=2mm

Reference Value = 1.623 V/m; Power Drift = 0.10 dB

Peak SAR (extrapolated) = 1.67 W/kg

SAR(1 g) = 0.378 W/kg; SAR(10 g) = 0.140 W/kg

Maximum value of SAR (measured) = 0.840 W/kg



0 dB = 0.840 W/kg = -0.76 dBW/kg

Test Laboratory: Huatongwei International Inspection Co., Ltd.,SAR Lab

Date: 12/11/2018

WIFI 5G U-NII-3-Body

Communication System: UID 0, Generic WIFI (0); Frequency: 5785 MHz;Duty Cycle: 1:1

Medium parameters used: $f = 5785$ MHz; $\sigma = 6.244$ S/m; $\epsilon_r = 46.958$; $\rho = 1000$ kg/m³

Phantom section: Flat Section

Ambient Temperature:22.8°C;Liquid Temperature:22.6°C;

DASY Configuration:

- Probe: EX3DV4 - SN7494; ConvF(4.61, 4.61, 4.61) @ 5785 MHz; Calibrated: 2/26/2018
- Sensor-Surface: 1.4mm (Mechanical Surface Detection)
- Electronics: DAE4 Sn1549; Calibrated: 4/25/2018
- Phantom: ELI V8.0 ; Type: QD OVA 004 AA ; Serial: 2078
- DASY52 52.10.2(1495); SEMCAD X 14.6.12(7450)

Rear/CH 157/Area Scan (151x151x1): Interpolated grid: dx=1.000 mm, dy=1.000 mm

Maximum value of SAR (interpolated) = 1.39 W/kg

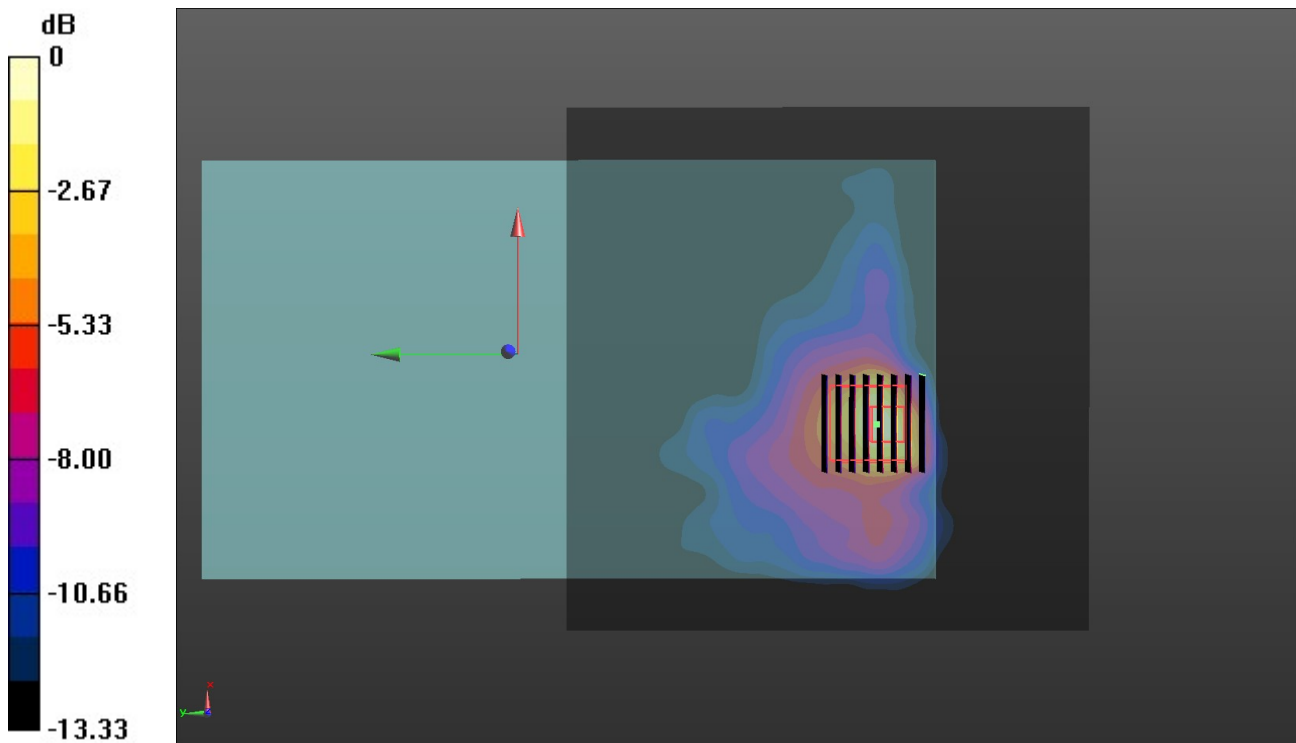
Rear/CH 157/Zoom Scan (8x8x6)/Cube 0: Measurement grid: dx=4mm, dy=4mm, dz=2mm

Reference Value = 2.047 V/m; Power Drift = -0.17 dB

Peak SAR (extrapolated) = 2.99 W/kg

SAR(1 g) = 0.599 W/kg; SAR(10 g) = 0.210 W/kg

Maximum value of SAR (measured) = 1.44 W/kg



0 dB = 1.44 W/kg = 1.58 dBW/kg