

Bluetooth Mesh Module Datasheet

(WS_D02_8266_V2.2)



Shenzhen WE-SMART Electronics Co., Ltd

Website: www.we-smart.cn

Mailbox: business@we-smart.cn

Address: **7th FL,Bldg 2B,Wu tong dao industrial park,Hangkong Rd,Xi'xiang St,Bao'an,Shenzhen**

深 圳 市 微 智 电 子 有 限 公 司

Catalog

Version Description	2
1: Product introduction	3
1.1 Product overview.....	3
1.2 Product features	4
1.3 Product parameters	4
1.4 Product application.....	4
2: Product hardware introduction.....	5
2.1 Module configuration and interface	5
2.2 Module interface definition.....	6
2.3 Module photo	6
2.4 PCB package size	7
2.5 Antenna design	7
2.6 PCB design description	7
2.7 Module reset.....	7
4: Contact information.....	8

Version Description

Version Number	Modify Content	Modifier	time
V1.0	First Draft	WE-SMART	2016-07-14
V2.0	1: update contact 2: because the TL8266 chip PWM5 (B<0>) is defined as the default output high level, so the electric moment, the PIN lights flash, so the PWM pin can not be used, now replaced by PWM1N (C<1>)	WE-SMART	2016-10-09
V2.1	Update screen printing	WE-SMART	2016-11-07
V2.2	1: add key input pin description 2: to increase the use of I2C precautions, the use of the need to add 3.3K pull-up resistor	WE-SMART	2016-12-26

1: Product introduction

1.1: Product overview

WS_D02 smart Bluetooth module is based on the TLSR8266 chip design is compatible with Bluetooth 4 low power consumption (BLE) and mesh networking function of the Bluetooth module. It is mainly used in intelligent lamp control, smart home, consumer electronics, industrial control, etc., can meet the requirements of low power consumption, low latency, short-range wireless data communications.

1.2: Product features

- size: 18.8mm length and width 11.6mm
- - 92dBm BT4.0 Rx Sensitivity
- Tx output power: + 7dBm
- - 40°C~ + 85°C temperature range
- Low Power consumption
 - Receiver mode current: 13mA
 - Transmit mode current: 13Ma @0dBm power,19mA@ max power
 - Suspend mode current: 20uA(IO wakeup)/22uA(Timer wakeup)
 - Deep sleep mode current: 0.7uA
- Chip power supply: 1.9V~3.6V(with external flash),2.7V~3.6V(with internal flash)
- Progrm memory: Internal 512KB Flash
- Support BLE mesh, Bluetooth 4.0 specification
 - The various peripheral equipment interface
 - PWM output
 - UART external communication interface
 - I2C/SPI interface
 - USB interface
- Point to point and point to multipoint communication
- Support firmware upgrade and remote parameter setting

1.3: Product parameters

Table 1: Module specification

Category	Project	Parameter
Wireless parameters	Wireless standard	Bluetooth 4.0
	RF Link data rata	2Mbps
	Frequency range	2.4G
	Tx output power	Max 7dBm
	Rx Sensitivity	$\leq -92\text{dBm}$
	Antenna type	Plate antenna
Hardware parameters	Data interface	PWM
		UART
		USB
		SPI/I2C
	Working voltage	3.3V
	Supply current	50mA
	Low power current	$\leq 0.7\mu\text{A}$
	transmission distance	Outdoor open 60m
	Working temperature	$-40^{\circ}\text{C} \sim +85^{\circ}\text{C}$
Module size	18.8x11.6x1.5mm	

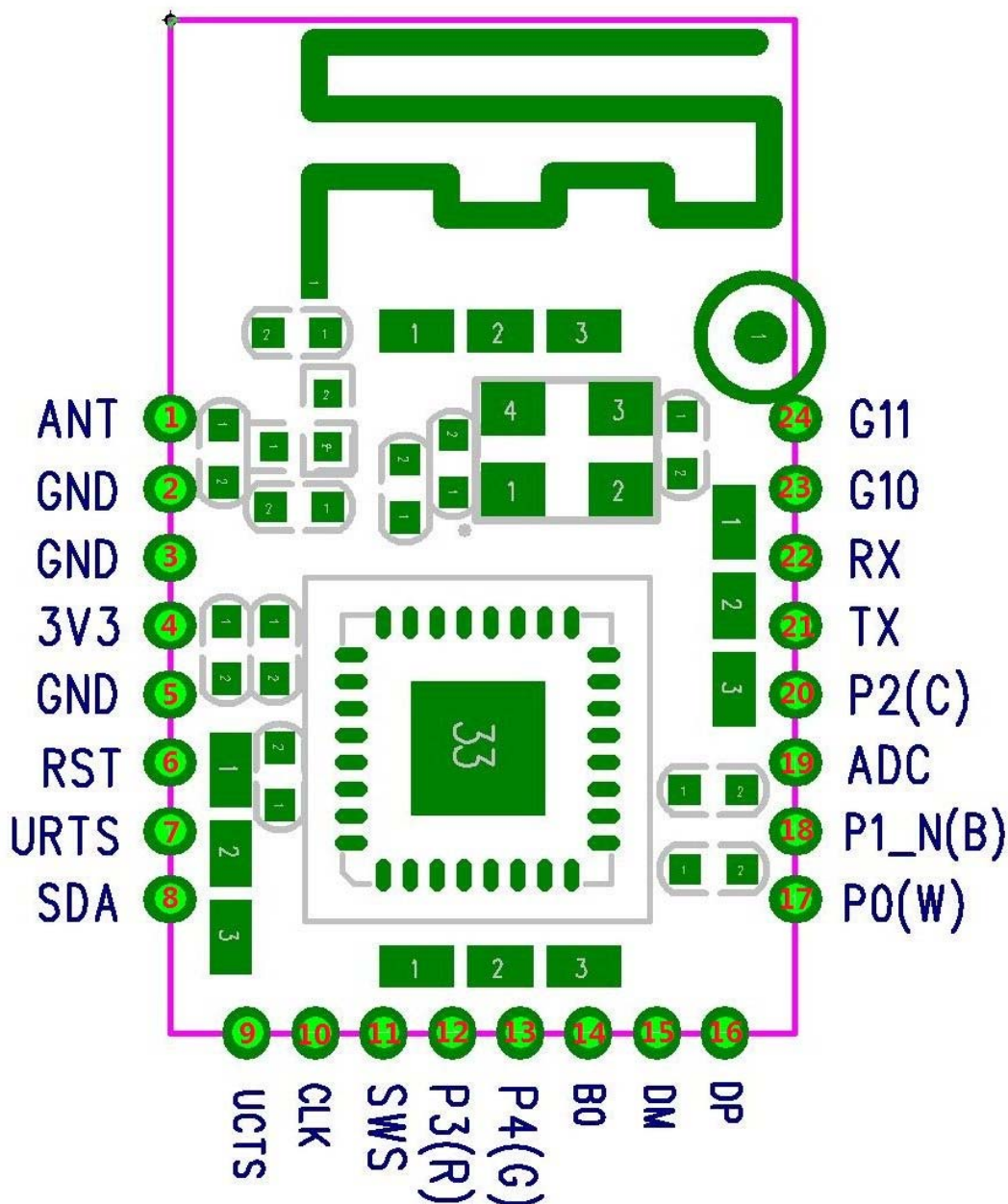
1.4: Product application

- home / building automation
- The intelligent lighting control system
- Air conditioning - wireless network control
- Industrial control
- Wearable devices
- Low power wireless sensor network

2: Product hardware introduction

2.1 Module configuration and interface

The module is shown as follows: the external 24 pins, detailed pin functions refer to the following table;



Note: the above antenna part is onboard antenna area (5.5mm from top), using the onboard antenna, the antenna area in PCB layout clearance.

2.2 Module interface definition

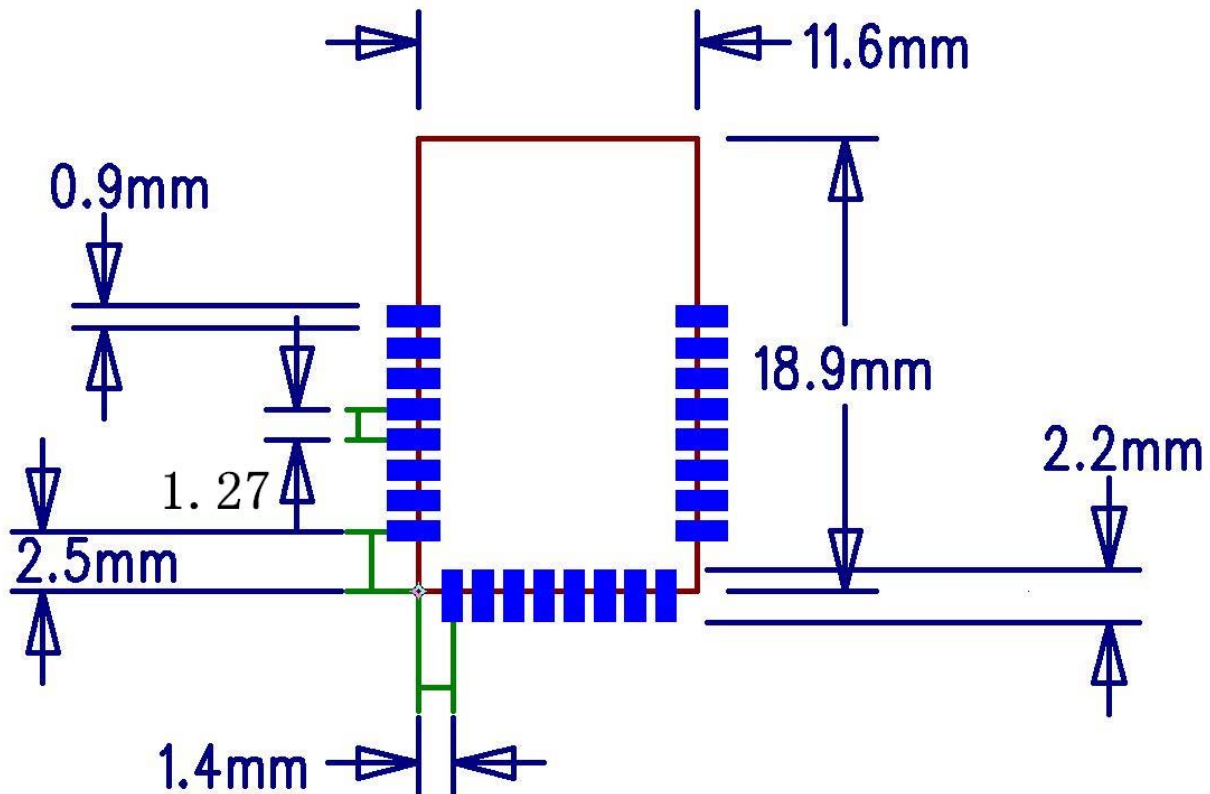
Pin	Function	Detailed description
1	ANT	External antenna interface, the use of this interface, the module needs to switch through a resistor to the antenna and external antenna;
2	GND	GND input;
3	GND	GND input;
4	VCC_3V3	VCC input;
5	GND	GND input;
6	RST	Power on reset, low effective;
7	URTS	SPI chip select, Active low/UART_RTS
8	SDA	SPI data /I2C data, using I2C to pull 3.3K
9	UCTS	SPI data output / UART_CTS
10	CLK	SPI clock, /I2C clock, using I2C to pull 3.3K
11	SWS	System debug interface
12	P3(R)	The red PWM output, high efficiency, can be customized for the GPIO function
13	P4(G)	The Green PWM output, high efficiency, can be customized for the GPIO function
14	B0	The default output high level, can be customized for the common GPIO
15	DM	USB-
16	DP	USB+
17	P0(W)	The Warm white PWM output, high efficiency, can be customized for the GPIO function
18	P1_N(B)	The Blue PWM output, high efficiency, can be customized for the GPIO function
19	ADC	ADC 接口
20	P2(C)	The White PWM output, high efficiency, can be customized for the GPIO function
21	TX	UART_TX
22	RX	Light switch button input, UART_RX
23	G10	Color change button input,
24	G11	GPIO11

Note: the 22 and 23 pin is defined as a key input pin, when the module needs to function keys, Download firmware with key functions can be used to switch key input light and color change, when using, need pullupsare.

2.3 Module photo



2.4 PCB package size



Note: please see detailed information package:D02-CORE-SMD.zip,
 Download link: <http://pan.baidu.com/s/1c1UEbz6> Password: 9m5v
 Which contains the PADS format package, and package compatible format

2.5 Antenna design

When the customer selects the internal on-board antenna, antenna design should comply with the following rules and modules of the proposed location:

- ①: The antenna must be away from the metal or high component of at least 10 mm
- ②: The antenna can not be any piece of enclosure protection All shells, including plastics, should be kept away from the antenna area at least 10 mm

2.6 PCB design description

The power to recommend the use of LDO for DC 3.3V, provide the driving current of at least 30mA, the module of power capacitor placed a 10uF proposalIn the PCB layout, the BLE module is placed should be kept away from the magnetic field source such as transformers and coils

2.7 Rest

When the module network, to back network, no mobile phone APP on the network when the network back, the need for a hardware reset reset method: power up and down in the form of (three short and two long), first power on 1-3S, and then, repeat 3 times, then 2 long time the 5-10S on the electrical operation can be reset.

3: Contact information

Address: 7th FL,Bldg 2B,Wu tong dao industrial park,Hangkong Rd,Xi'xiang
St,Bao'an,Shenzhen

Telephone number: 0755-26949499

Cooperative mailbox: business@we-smart.cn

Company website: www.we-smart.cn

.FCC Statement

1. This device complies with Part 15 of the FCC Rules. Operation is subject to the following two conditions:

(1) This device may not cause harmful interference.

(2) This device must accept any interference received, including interference that may cause undesired operation.

2. Changes or modifications not expressly approved by the party responsible for compliance could void the user's authority to operate the equipment.

NOTE: The manufacturer is not responsible for any radio or TV interference caused by unauthorized modifications to this equipment. Such modifications could void the user's authority to operate the equipment.

NOTE: This equipment has been tested and found to comply with the limits for a **Class B** digital device, pursuant to part 15 of the FCC Rules. These limits are designed to provide reasonable protection against harmful interference in a residential installation.

This equipment generates uses and can radiate radio frequency energy and, if not installed and used in accordance with the instructions, may cause harmful interference to radio communications. However, there is no guarantee that interference will not occur in a particular installation. If this equipment does cause harmful interference to radio or television reception, which can be determined by turning the equipment off and on, the user is encouraged to try to correct the interference by one or more of the following measures:

- Reorient or relocate the receiving antenna.
- Increase the separation between the equipment and receiver.
- Connect the equipment into an outlet on a circuit different from that to which the receiver is connected.
- Consult the dealer or an experienced radio/TV technician for help

This equipment complies with FCC radiation exposure limits set forth for an uncontrolled environment. This equipment should be installed and operated with minimum distance of 5 mm between the radiator and your body.

ORIGINAL EQUIPMENT MANUFACTURER (OEM) NOTES

- The OEM must certify the final end product to comply with unintentional radiators (FCC Sections 15.107 and 15.109) before declaring compliance of the final product to Part 15 of the FCC rules and regulations. Integration into devices that are directly or indirectly connected to AC lines must add with Class II Permissive Change.
- The OEM must comply with the FCC labeling requirements. If the module's label is not visible when installed, then an additional permanent label must be applied on the outside of the finished product which states: "Contains transmitter module FCC ID: 2ALAJWS-D02". Additionally, the following statement should be included on the label and in the final product's user manual: "This device complies with Part 15 of the FCC Rules. Operation is subject to the following two conditions: (1) This device may not cause harmful interferences, and (2) this device must accept any interference received, including interference that may cause undesired operation."
- The module is limited to installation in mobile or fixed applications. Separate approval is required for all other operating configurations, including portable configuration with respect to Part 2.1093 and different antenna configurations.
- A module or modules can only be used without additional authorizations if they have been tested and granted under the same intended end-use operational conditions, including simultaneous transmission operations. When they have not been tested and granted in this manner, additional testing and/or FCC application filing may be required. The most straightforward approach to address additional testing conditions is to have the grantee responsible for the certification of at least one of the modules submit a permissive change application. When having a module grantee file a permissive change is not practical or feasible, the following guidance provides some additional options for host manufacturers. Integrations using modules where additional testing and/or FCC application filing(s) may be required are: (A) a module used in devices requiring additional RF exposure compliance information (e.g., MPE evaluation or SAR testing); (B) limited and/or split modules not meeting all of the module requirements; and (C) simultaneous transmissions for independent collocated transmitters not previously granted together.

This Module is full modular approval, it is limited to OEM installation ONLY.

Integration into devices that are directly or indirectly connected to AC lines must add with Class II Permissive Change. (OEM) Integrator has to assure compliance of the entire end product include the integrated Module.

Additional measurements (15B) and/or equipment authorizations (e.g Verification) may need to be addressed depending on co-location or simultaneous transmission issues if applicable.

(OEM) Integrator is reminded to assure that these installation instructions will not be made available to the end user of the final host device.