

FIGURE 4
BLUETOOTH MODULE ACW520 (M/N: ACW520-BT)
ANTENNA LOCATION



FIGURE 5
BLUETOOTH MODULE ACW520 (M/N: ACW520-BT)
COVER REMOVED

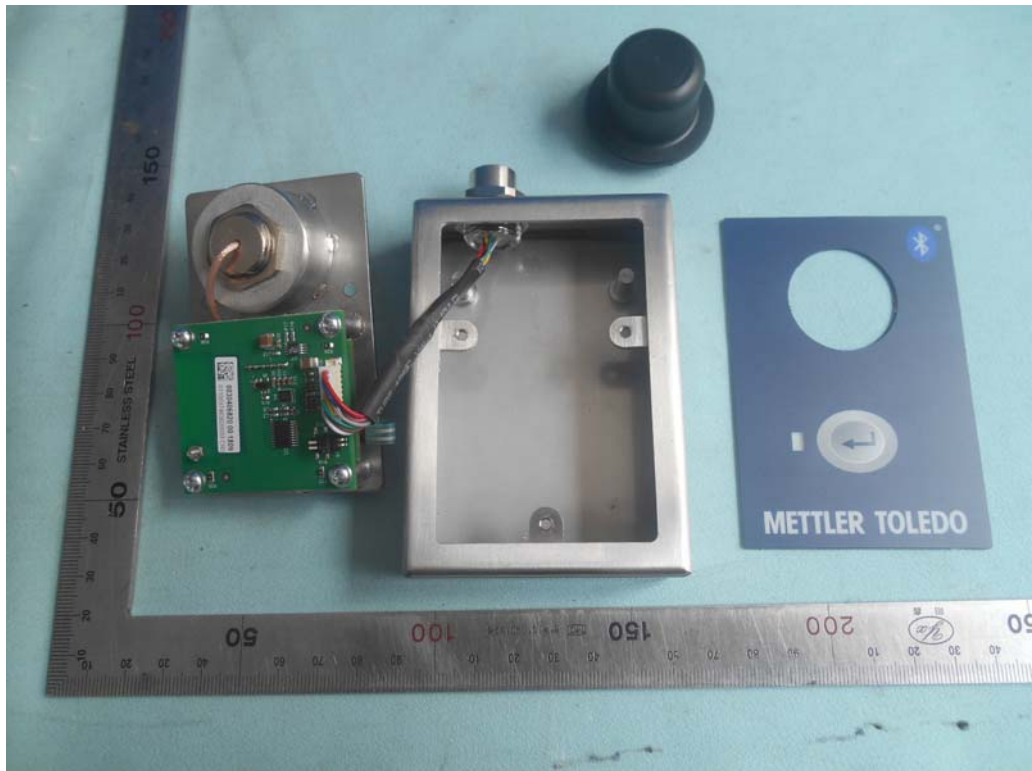


FIGURE 6
BLUETOOTH MODULE ACW520 (M/N: ACW520-BT)
ANTENNA CONNECTION

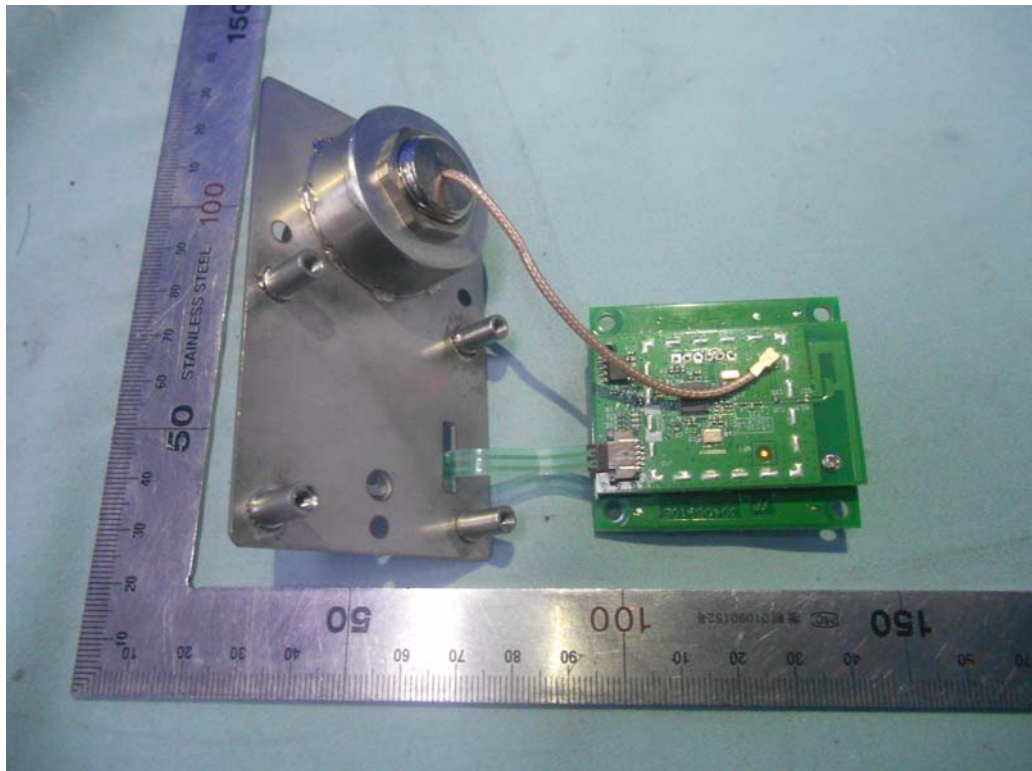


FIGURE 7
BLUETOOTH MODULE ACW520 (M/N: ACW520-BT)
RF BOARD (COMPONENT SIDE)

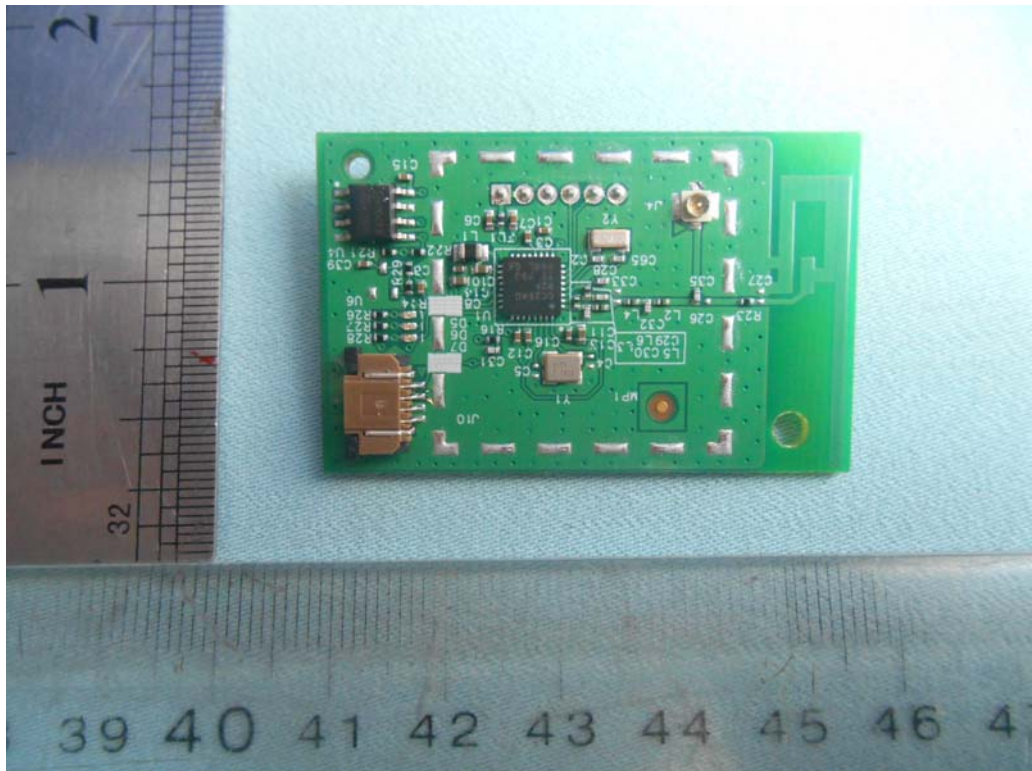


FIGURE 8
BLUETOOTH MODULE ACW520 (M/N: ACW520-BT)
RF BOARD (SOLDERED SIDE)

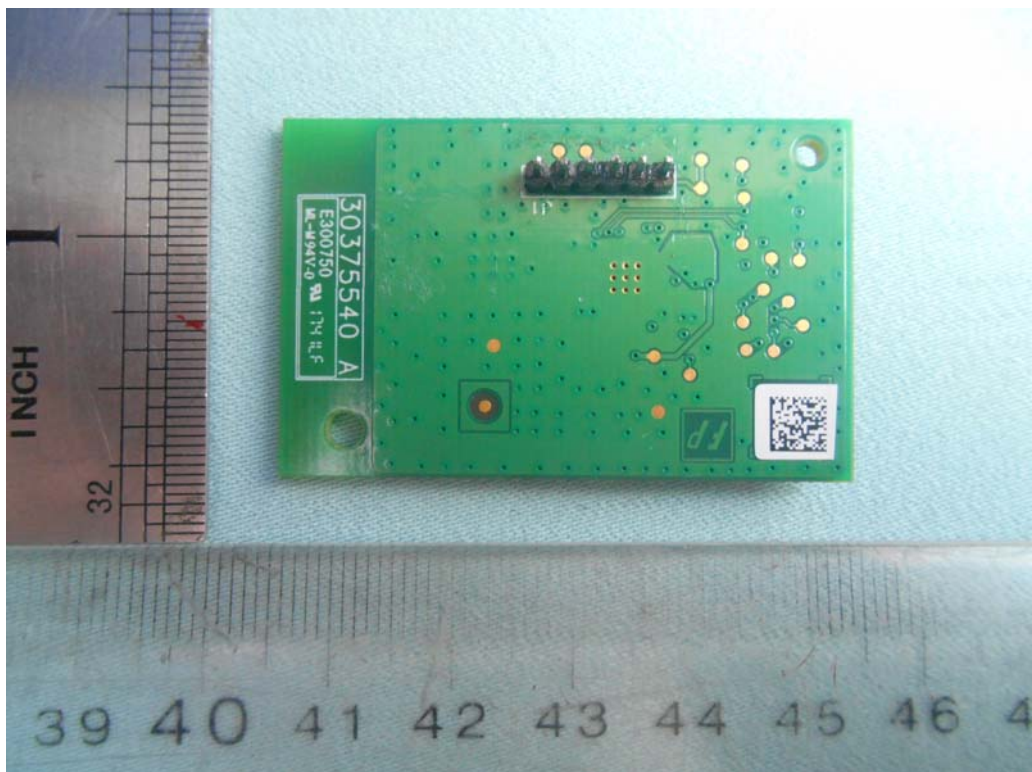


FIGURE 9
BLUETOOTH MODULE ACW520 (M/N: ACW520-BT)
MAIN BOARD (COMPONENT SIDE)

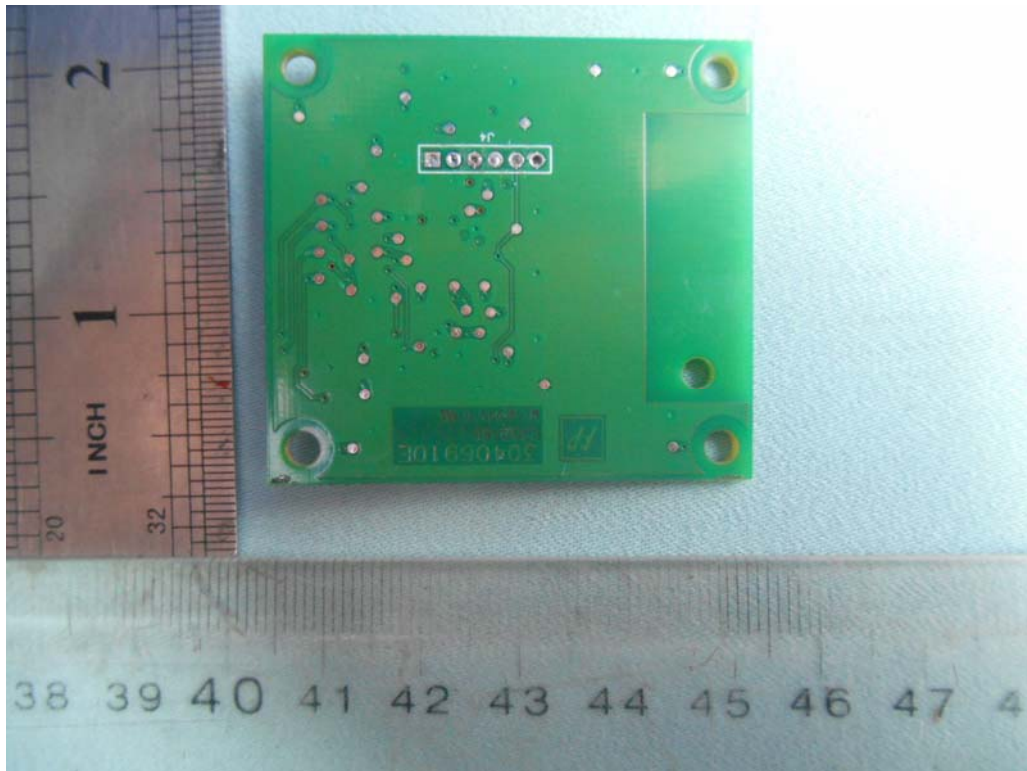


FIGURE 10
BLUETOOTH MODULE ACW520 (M/N: ACW520-BT)
MAIN BOARD (SOLDERED SIDE)

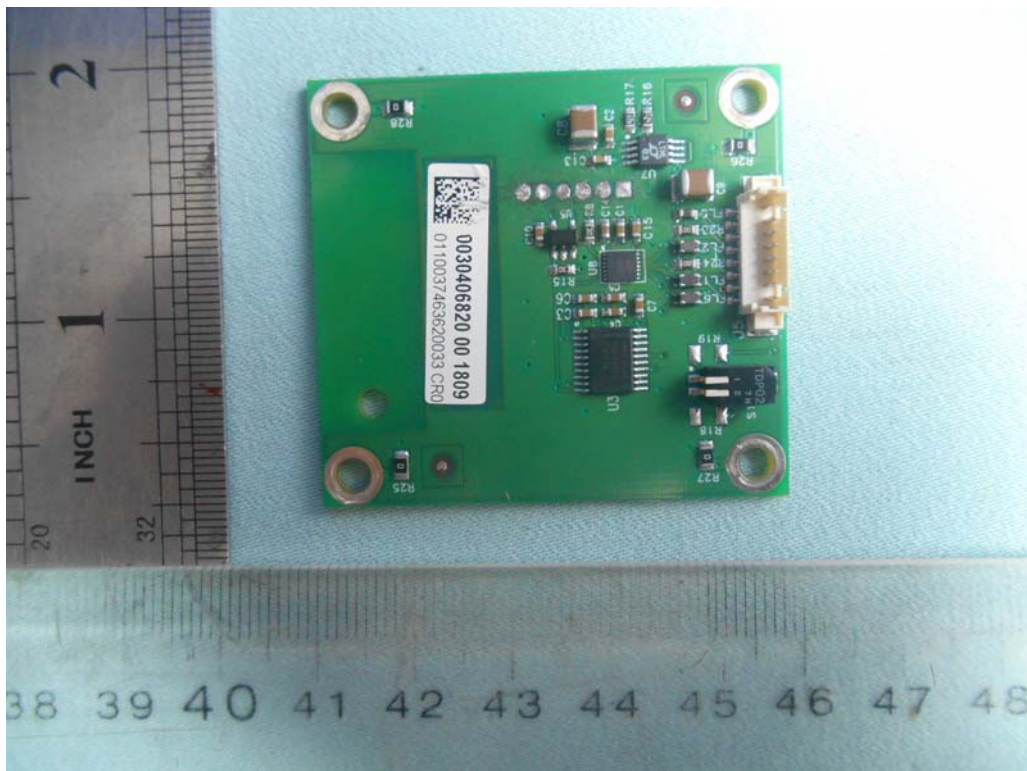


FIGURE 11
BLUETOOTH MODULE ACW520 (M/N: ACW520-BT)
CHIP & CRYSTAL ON MAIN BOARD

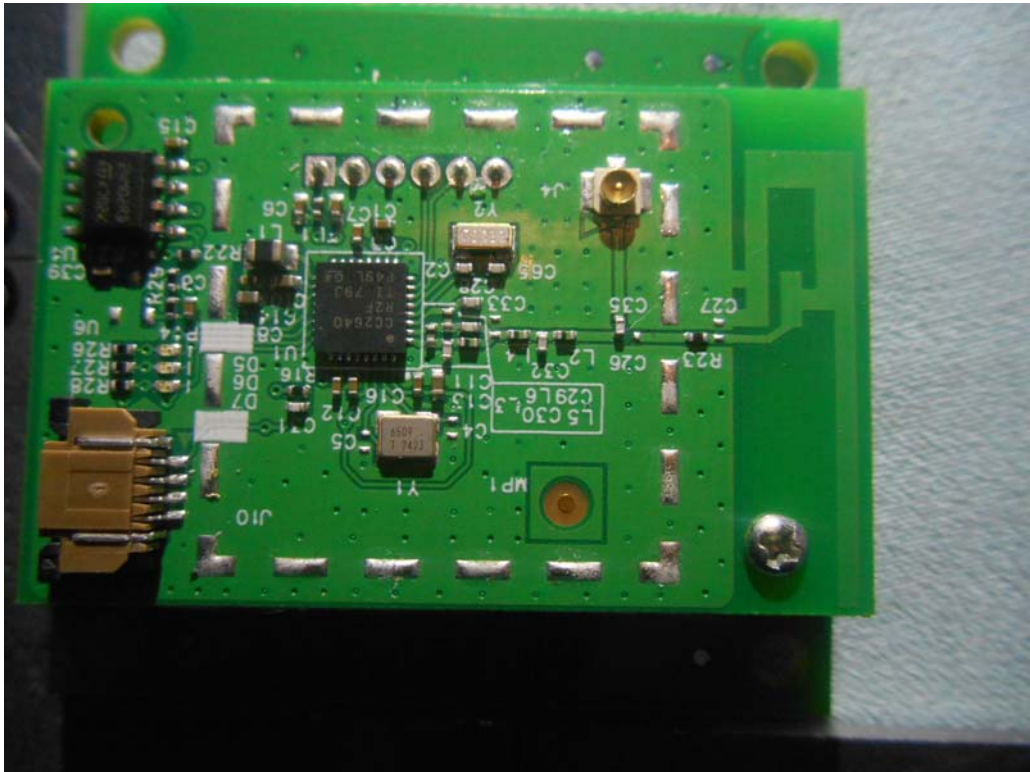
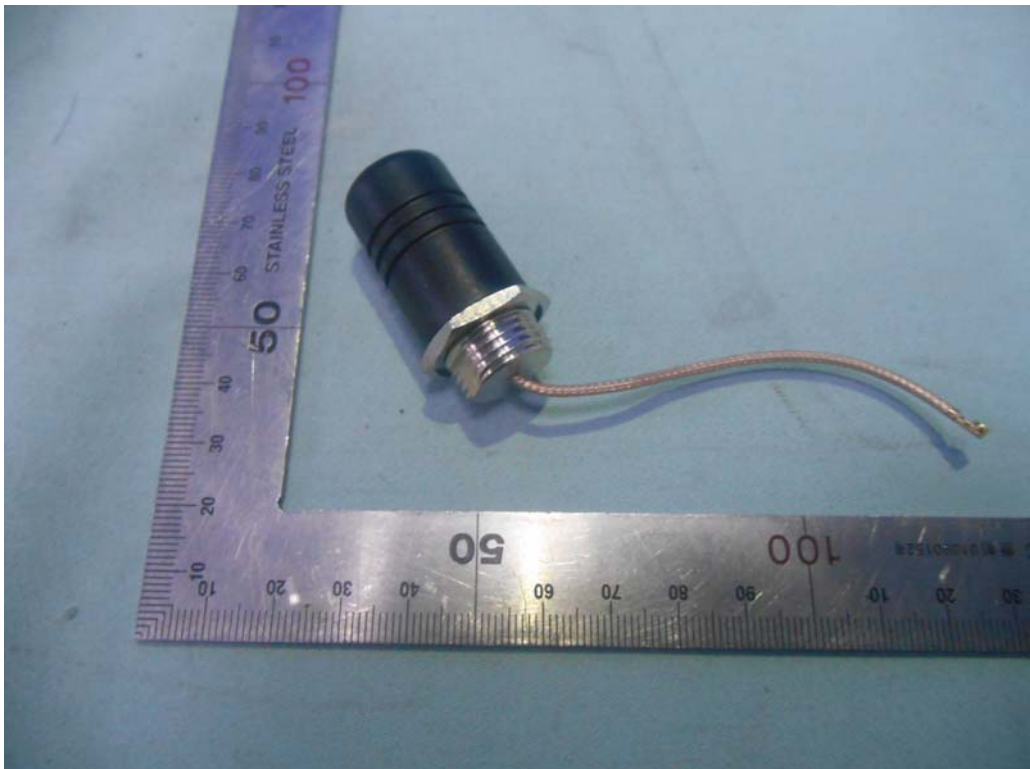


FIGURE 12
BLUETOOTH MODULE ACW520 (M/N: ACW520-BT)
ANTENNA



The Antenna uses a unique coupling to the intentional radiator, is comply with the 15.203 requirement.