

FIGURE 9
WEIGHING TERMINAL (M/N: IND256X)
COVER REMOVED

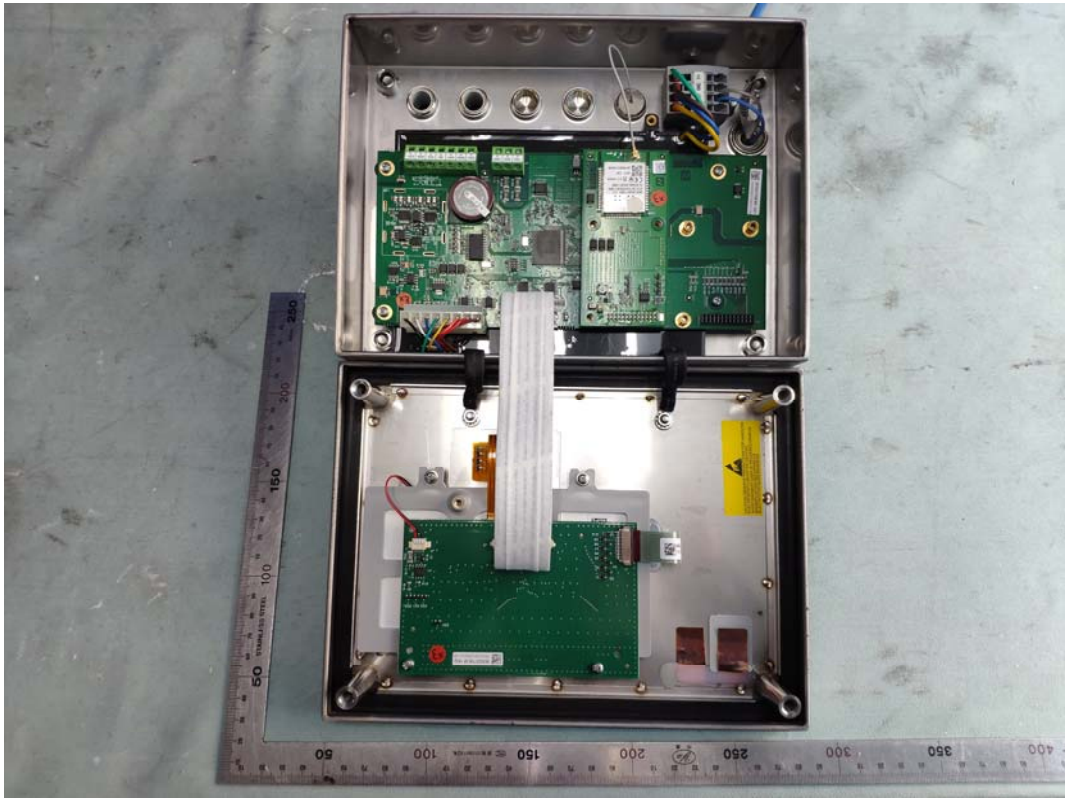


FIGURE 10
WEIGHING TERMINAL (M/N: IND256X)
DISPLAY BOARD (COMPONENT SIDE)

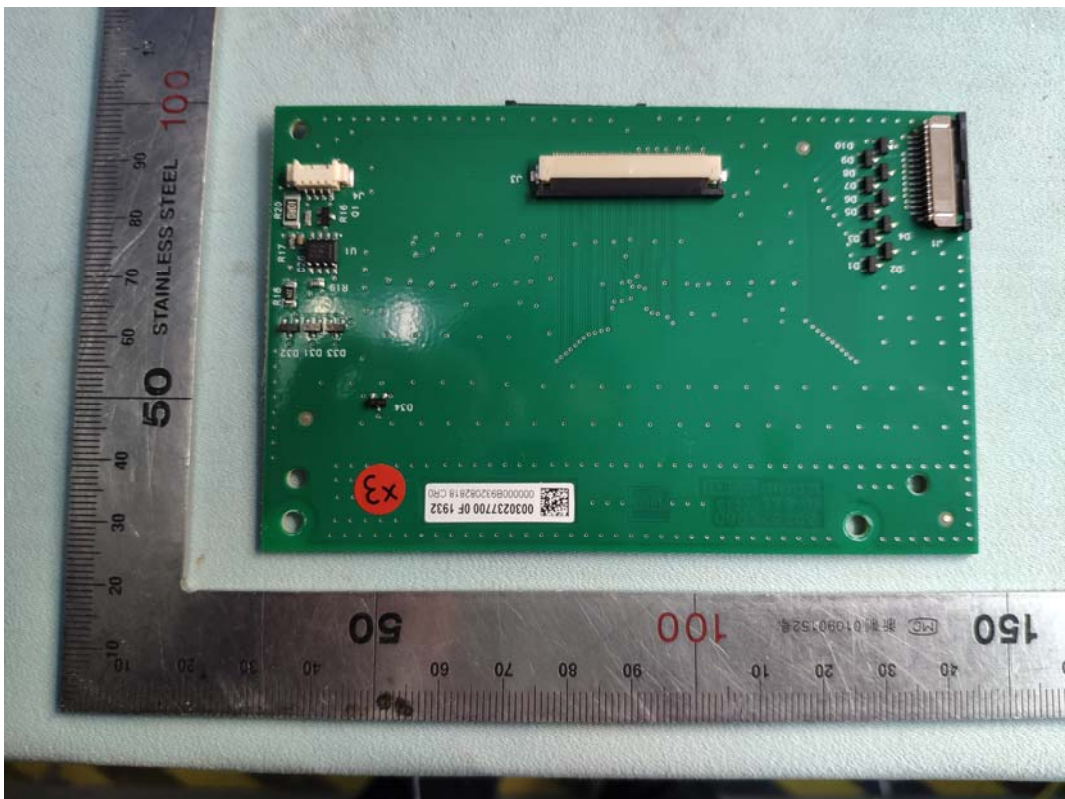


FIGURE 11
WEIGHING TERMINAL (M/N: IND256x)
DISPLAY BOARD (SOLDERED SIDE)

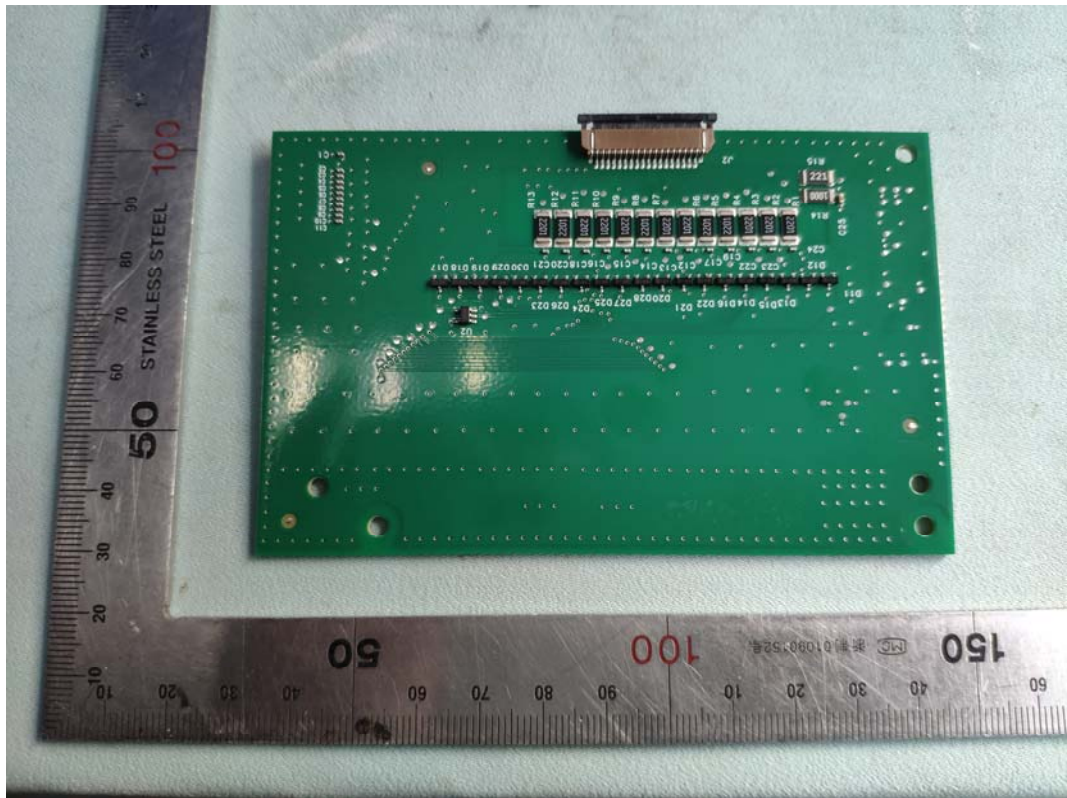


FIGURE 12
WEIGHING TERMINAL (M/N: IND256x)
MAIN BOARD (COMPONENT SIDE)

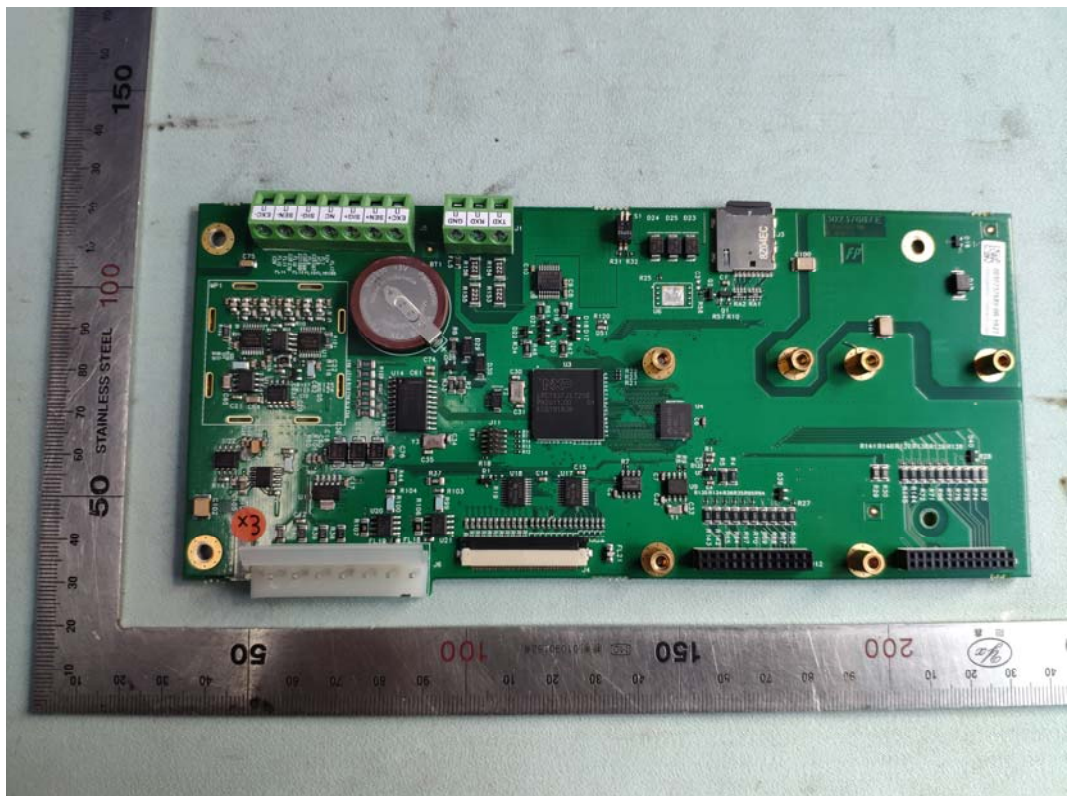


FIGURE 13
WEIGHING TERMINAL (M/N: IND256X)
MAIN BOARD (SOLDERED SIDE)

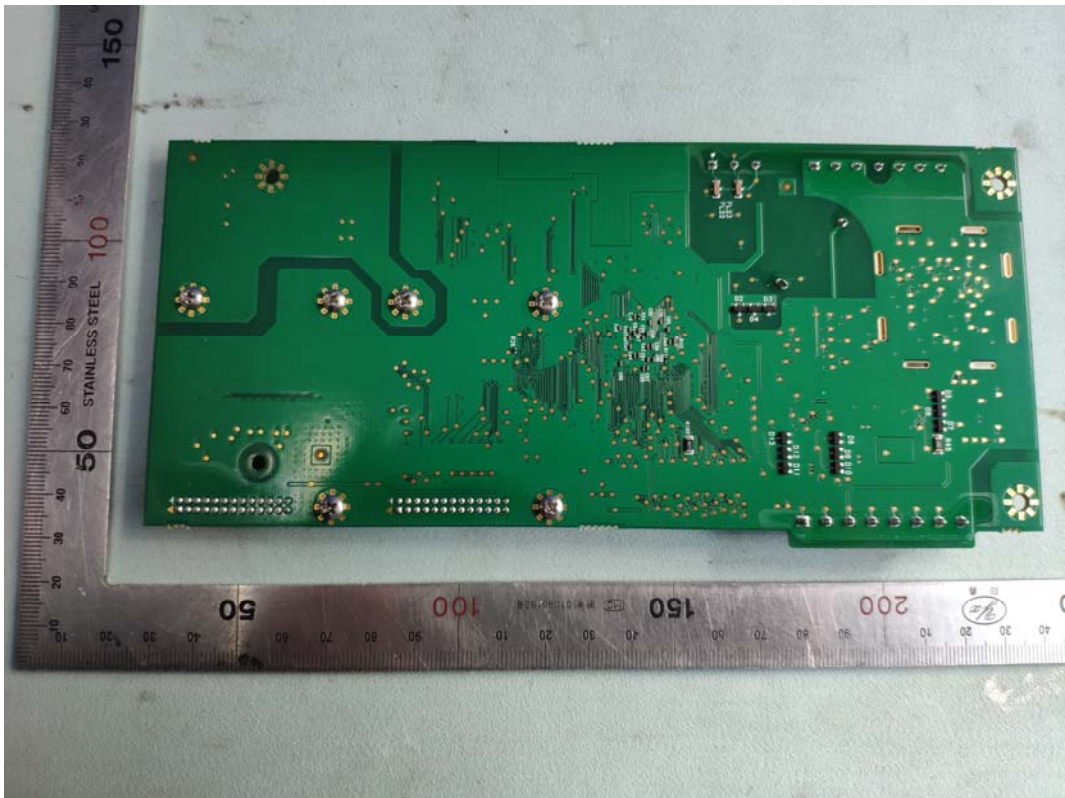


FIGURE 14
WEIGHING TERMINAL (M/N: IND256X)
CRYSTAL & CHIP ON MAIN BOARD

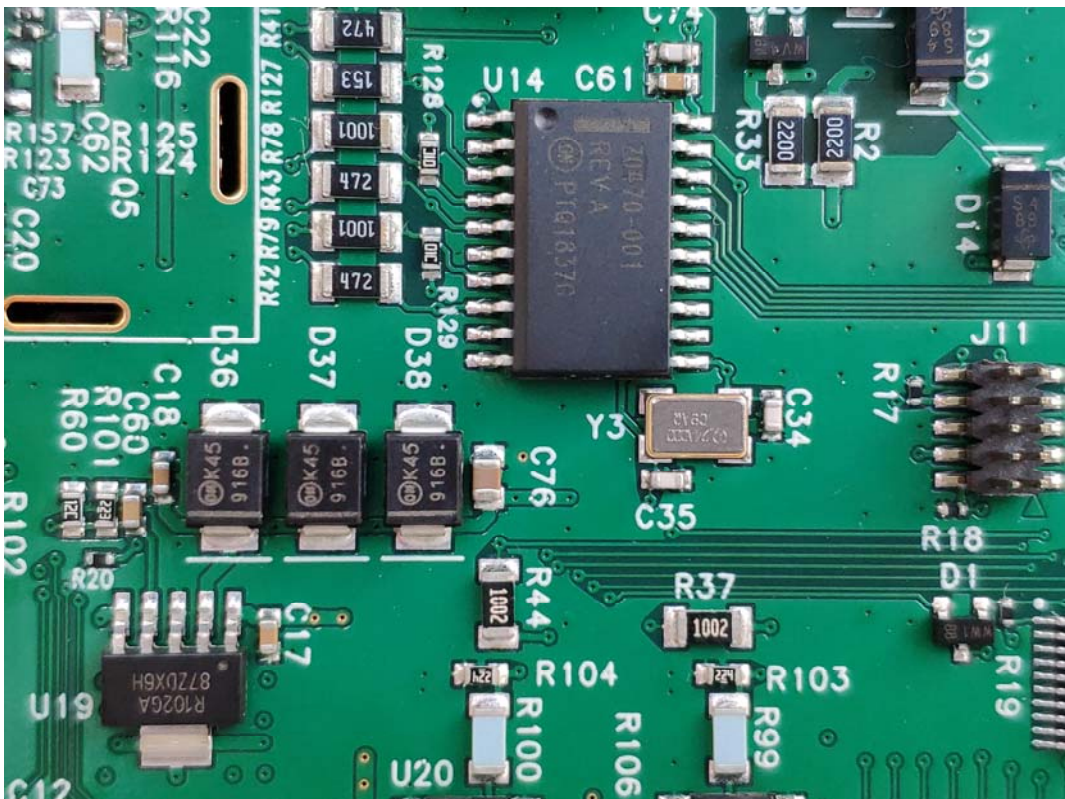


FIGURE 15
WEIGHING TERMINAL (M/N: IND256x)
CRYSTAL & CHIP ON MAIN BOARD



FIGURE 16
WEIGHING TERMINAL (M/N: IND256x)
RF BOARD (COMPONENT SIDE)

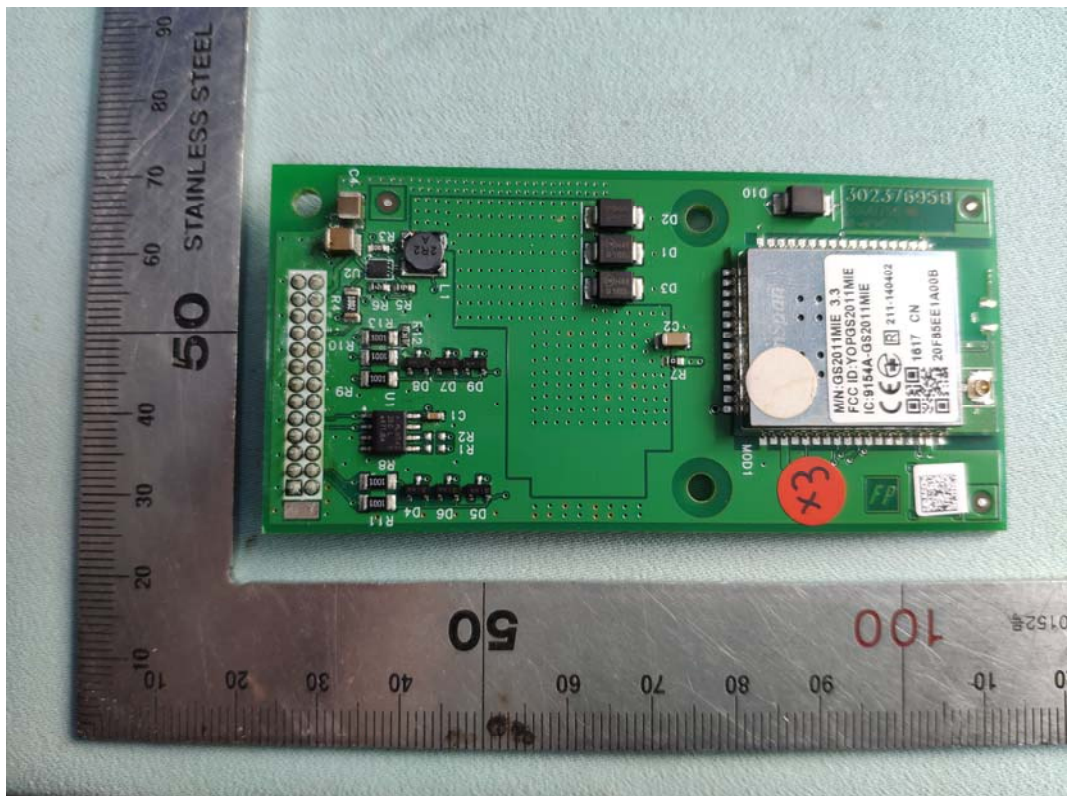


FIGURE 17
WEIGHING TERMINAL (M/N: IND256X)
RF BOARD (SOLDERED SIDE)

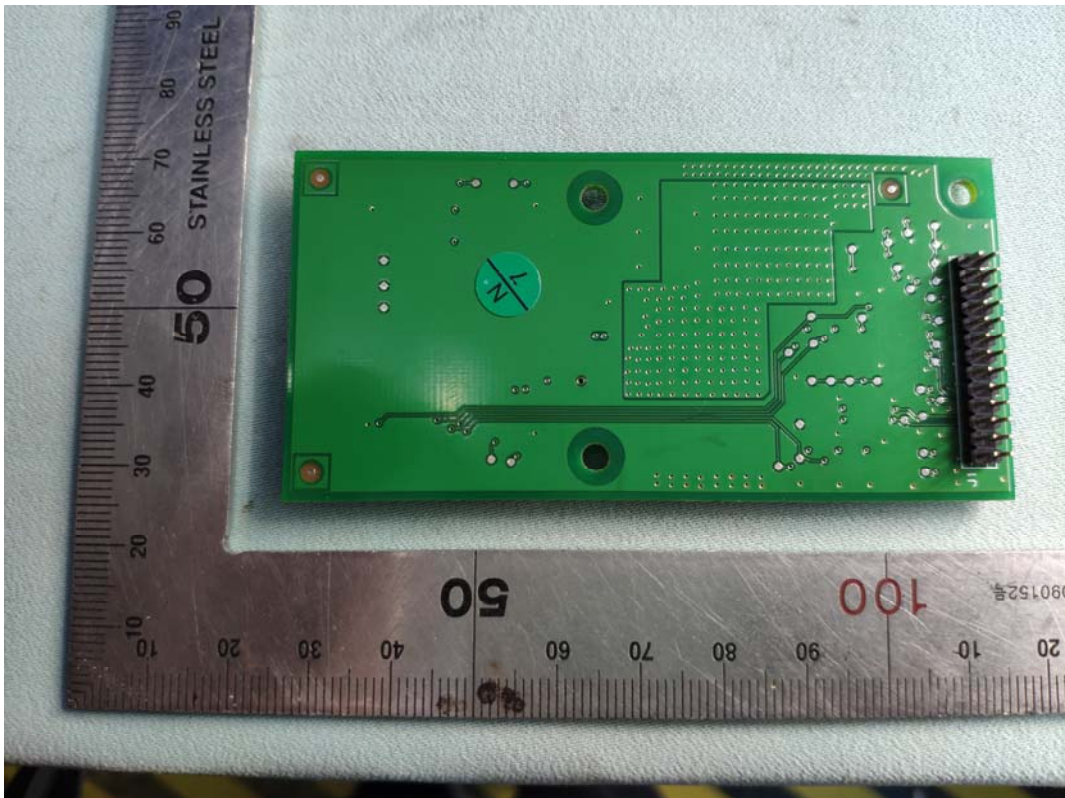


FIGURE 18
WEIGHING TERMINAL (M/N: IND256X)
CRYSTAL & CHIP ON RF BOARD



FIGURE 19
WEIGHING TERMINAL (M/N: IND256X)
RF MODULE (BACK VIEW)

