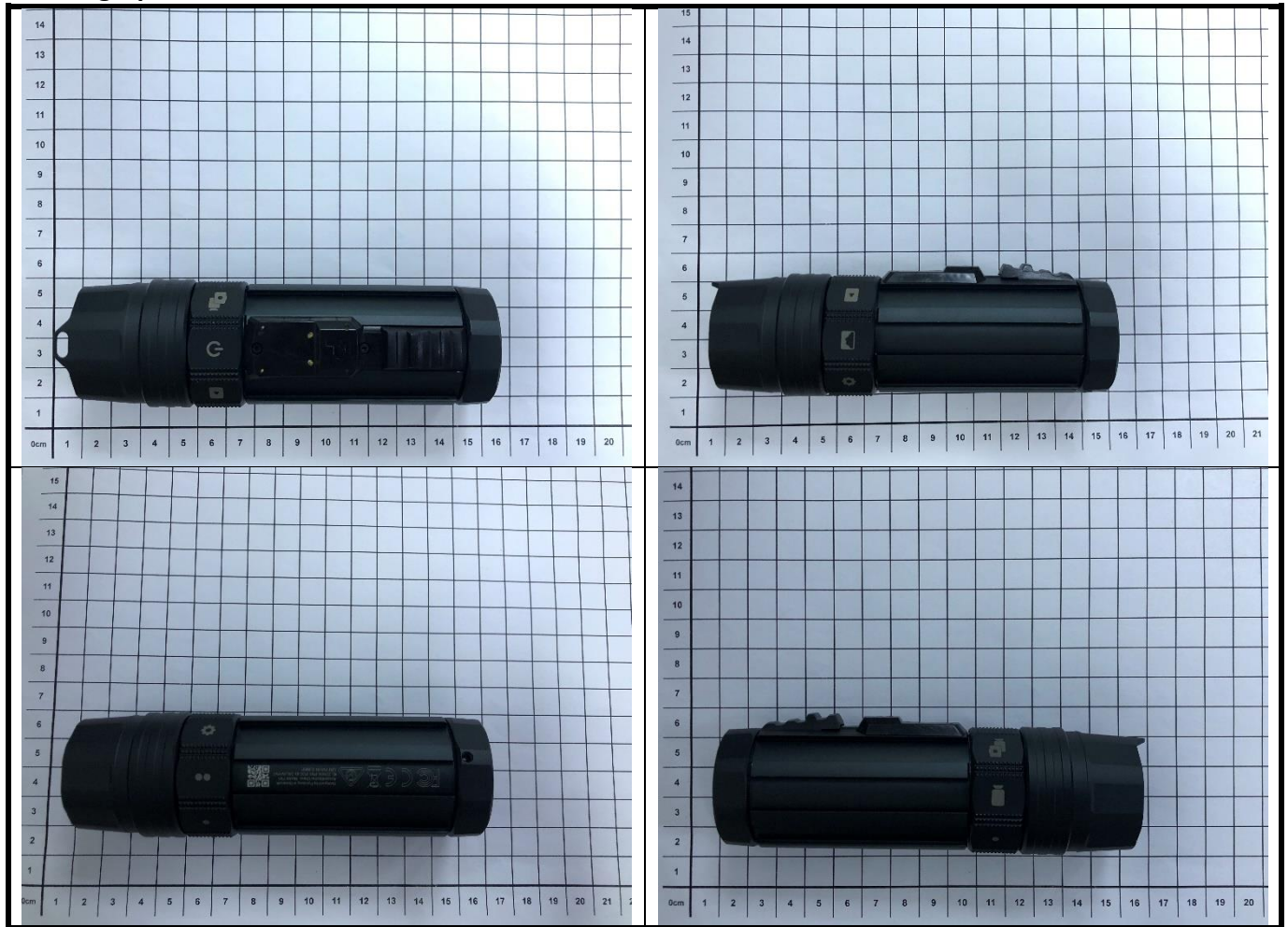
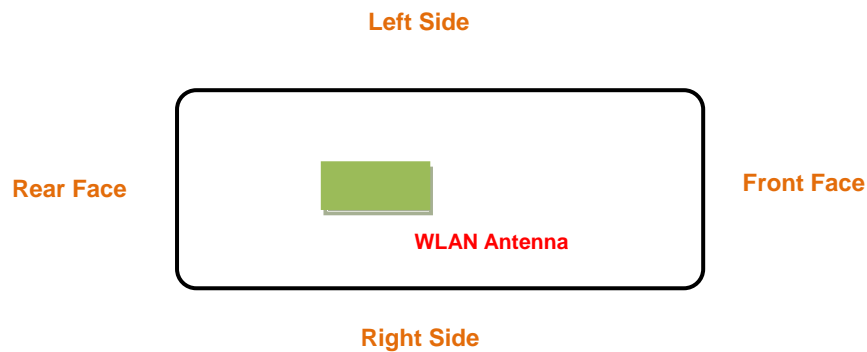


<Photographs of EUT>



<Antenna Location>



<EUT Top View>

The separation distance for antenna to edge:

Antenna	To Left Side (mm)	To Right Side (mm)	To Top Side (mm)	To Bottom Side (mm)
WLAN	13	13	0	33

<Photographs of SAR Setup>



Left Side of EUT with 0 cm Gap



Right Side of EUT with 0 cm Gap



Curved surface of Left Side of EUT with 0 cm Gap



Curved surface of Right Side of EUT with 0 cm Gap



Top Side of EUT with 0 cm Gap



Bottom Side of EUT with 0 cm Gap