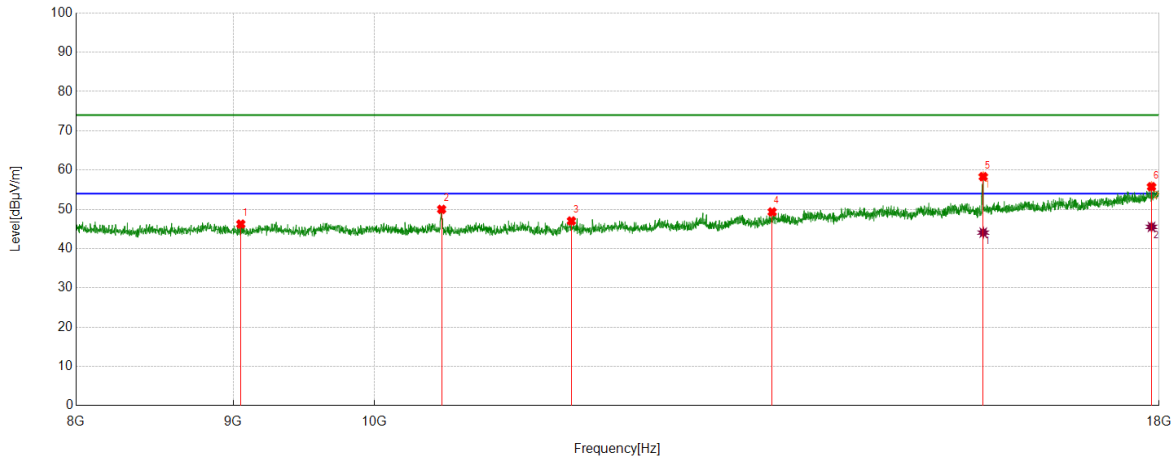


Test Mode	Channel	Polarization	Verdict
11A	5260	Vertical	PASS



PK Result:

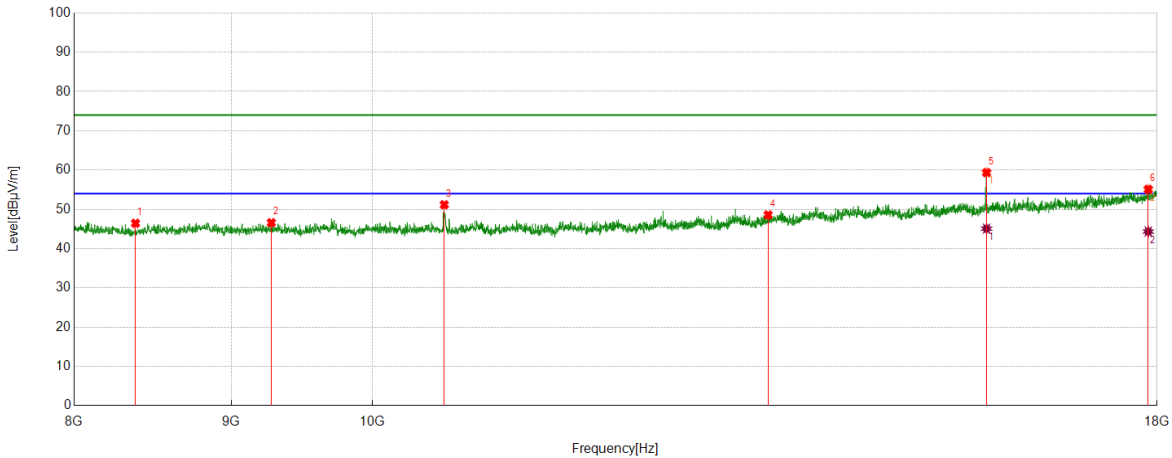
No.	Frequency	Reading Level	Correct Factor	Result	Limit	Margin	Remark
	[MHz]	[dBuV]	[dB/m]	[dBuV/m]	[dBuV/m]	[dB]	
1	9050.175	42.89	3.35	46.24	74.00	27.76	peak
2	10518.7531	45.51	4.48	49.99	74.00	24.01	peak
3	11592.2654	41.51	5.53	47.04	74.00	26.96	peak
4	13472.5788	40.33	9.01	49.34	74.00	24.66	peak
5	15779.6299	44.81	13.51	58.32	74.00	15.68	peak
6	17898.3164	36.72	19.04	55.76	74.00	18.24	peak

AV Result:

No.	Frequency	Reading Level	Correct Factor	Result	Limit	Margin	Remark
	[MHz]	[dBuV]	[dB/m]	[dBuV/m]	[dBuV/m]	[dB]	
1	15779.6299	30.56	13.51	44.07	54.00	9.93	AV
2	17898.3164	26.49	19.04	45.53	54.00	8.47	AV

- Remark: 1. Measurement = Reading Level + Correct Factor.  
 2. If Peak Result complies with AV limit, AV Result is deemed to comply with AV limit.  
 3. Test setup: RBW: 1 MHz, VBW: 3 MHz, Sweep time: auto.  
 4. Peak: Peak detector.  
 5. AVG: VBW refer to section 6.1.  
 6. For above 6.5GHz part, filter losses were only considered in the spurious frequency bands and the authorized band were not corrected for HPF losses. The proper operation of the transmitter prior to adding the filter to the measurement chain.  
 7. Only the worst case emission was recorded, if it complies with the limit, the other emissions deemed to comply with the limit.  
 8. Since non-restricted band peak emissions are less than the average limit, they also comply with the -27dBm/MHz (68.2dBuV/m) limit.

Test Mode	Channel	Polarization	Verdict
11A	5280	Horizontal	PASS



**PK Result:**

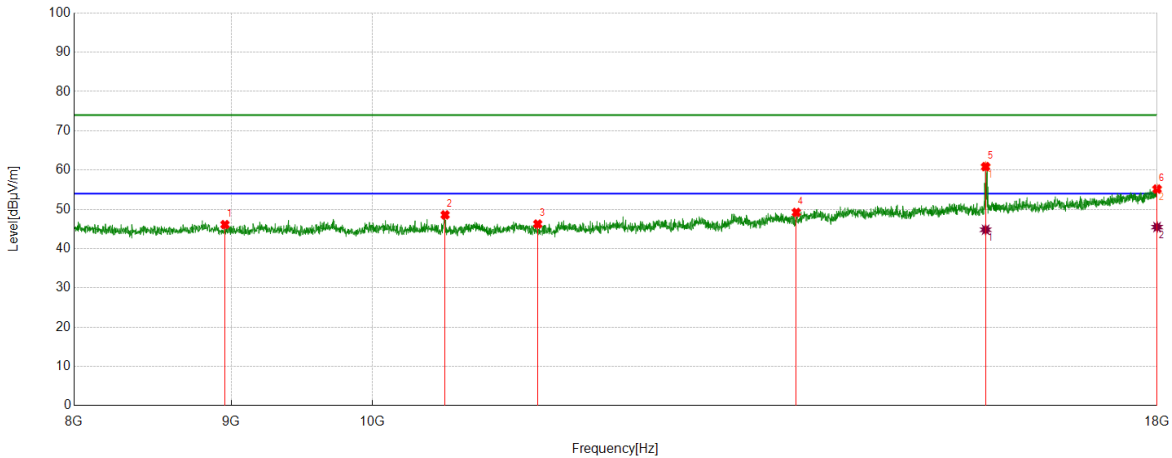
No.	Frequency	Reading Level	Correct Factor	Result	Limit	Margin	Remark
	[MHz]	[dBuV]	[dB/m]	[dBuV/m]	[dBuV/m]	[dB]	
1	8376.7295	43.68	2.77	46.45	74.00	27.55	peak
2	9273.5456	43.56	3.04	46.60	74.00	27.40	peak
3	10555.4259	46.83	4.34	51.17	74.00	22.83	peak
4	13452.5754	39.70	8.87	48.57	74.00	25.43	peak
5	15842.9738	46.01	13.35	59.36	74.00	14.64	peak
6	17881.6469	36.29	18.81	55.10	74.00	18.90	peak

**AV Result:**

No.	Frequency	Reading Level	Correct Factor	Result	Limit	Margin	Remark
	[MHz]	[dBuV]	[dB/m]	[dBuV/m]	[dBuV/m]	[dB]	
1	15842.9738	31.73	13.35	45.08	54.00	8.92	AV
2	17881.6469	25.53	18.81	44.34	54.00	9.66	AV

- Remark: 1. Measurement = Reading Level + Correct Factor.  
 2. If Peak Result complies with AV limit, AV Result is deemed to comply with AV limit.  
 3. Test setup: RBW: 1 MHz, VBW: 3 MHz, Sweep time: auto.  
 4. Peak: Peak detector.  
 5. AVG: VBW refer to section 6.1.  
 6. For above 6.5GHz part, filter losses were only considered in the spurious frequency bands and the authorized band were not corrected for HPF losses. The proper operation of the transmitter prior to adding the filter to the measurement chain.  
 7. Only the worst case emission was recorded, if it complies with the limit, the other emissions deemed to comply with the limit.  
 8. Since non-restricted band peak emissions are less than the average limit, they also comply with the -27dBm/MHz (68.2dBuV/m) limit.

Test Mode	Channel	Polarization	Verdict
11A	5280	Vertical	PASS



**PK Result:**

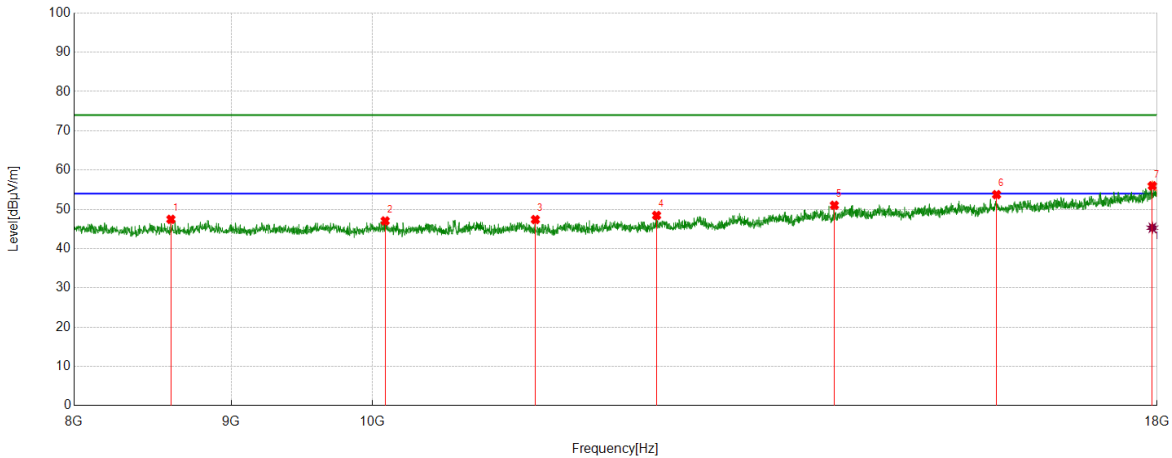
No.	Frequency	Reading Level	Correct Factor	Result	Limit	Margin	Remark
	[MHz]	[dBuV]	[dB/m]	[dBuV/m]	[dBuV/m]	[dB]	
1	8956.8261	43.15	2.96	46.11	74.00	27.89	peak
2	10562.0937	44.21	4.37	48.58	74.00	25.42	peak
3	11320.5534	40.94	5.32	46.26	74.00	27.74	peak
4	13739.2899	39.16	10.05	49.21	74.00	24.79	peak
5	15831.3052	47.64	13.23	60.87	74.00	13.13	peak
6	18000	36.48	18.69	55.17	74.00	18.83	peak

**AV Result:**

No.	Frequency	Reading Level	Correct Factor	Result	Limit	Margin	Remark
	[MHz]	[dBuV]	[dB/m]	[dBuV/m]	[dBuV/m]	[dB]	
1	15831.3052	31.57	13.23	44.80	54.00	9.20	AV
2	18000	26.79	18.69	45.48	54.00	8.52	AV

- Remark: 1. Measurement = Reading Level + Correct Factor.  
2. If Peak Result complies with AV limit, AV Result is deemed to comply with AV limit.  
3. Test setup: RBW: 1 MHz, VBW: 3 MHz, Sweep time: auto.  
4. Peak: Peak detector.  
5. AVG: VBW refer to section 6.1.  
6. For above 6.5GHz part, filter losses were only considered in the spurious frequency bands and the authorized band were not corrected for HPF losses. The proper operation of the transmitter prior to adding the filter to the measurement chain.  
7. Only the worst case emission was recorded, if it complies with the limit, the other emissions deemed to comply with the limit.  
8. Since non-restricted band peak emissions are less than the average limit, they also comply with the -27dBm/MHz (68.2dBuV/m) limit.

Test Mode	Channel	Polarization	Verdict
11A	5320	Horizontal	PASS



**PK Result:**

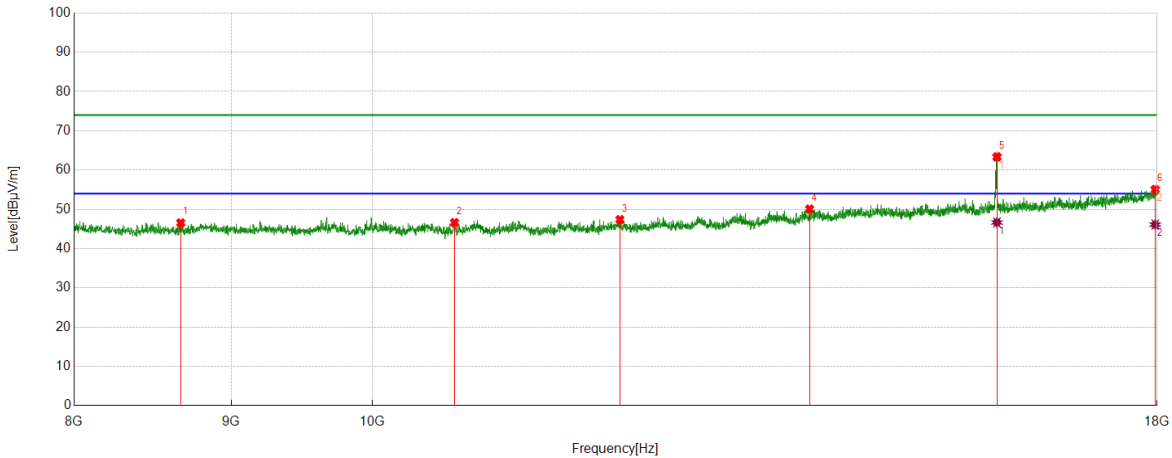
No.	Frequency	Reading Level	Correct Factor	Result	Limit	Margin	Remark
	[MHz]	[dBuV]	[dB/m]	[dBuV/m]	[dBuV/m]	[dB]	
1	8601.767	44.40	3.05	47.45	74.00	26.55	peak
2	10098.6831	42.51	4.54	47.05	74.00	26.95	peak
3	11300.5501	41.96	5.43	47.39	74.00	26.61	peak
4	12374.0623	41.50	6.95	48.45	74.00	25.55	peak
5	14136.0227	39.81	11.22	51.03	74.00	22.97	peak
6	15961.3269	39.74	14.00	53.74	74.00	20.26	peak
7	17936.6561	37.35	18.63	55.98	74.00	18.02	peak

**AV Result:**

No.	Frequency	Reading Level	Correct Factor	Result	Limit	Margin	Remark
	[MHz]	[dBuV]	[dB/m]	[dBuV/m]	[dBuV/m]	[dB]	
1	17936.6561	26.67	18.63	45.30	54.00	8.70	AV

- Remark: 1. Measurement = Reading Level + Correct Factor.  
 2. If Peak Result complies with AV limit, AV Result is deemed to comply with AV limit.  
 3. Test setup: RBW: 1 MHz, VBW: 3 MHz, Sweep time: auto.  
 4. Peak: Peak detector.  
 5. AVG: VBW refer to section 6.1.  
 6. For above 6.5GHz part, filter losses were only considered in the spurious frequency bands and the authorized band were not corrected for HPF losses. The proper operation of the transmitter prior to adding the filter to the measurement chain.  
 7. Only the worst case emission was recorded, if it complies with the limit, the other emissions deemed to comply with the limit.  
 8. Since non-restricted band peak emissions are less than the average limit, they also comply with the -27dBm/MHz (68.2dBuV/m) limit.

Test Mode	Channel	Polarization	Verdict
11A	5320	Vertical	PASS



PK Result:

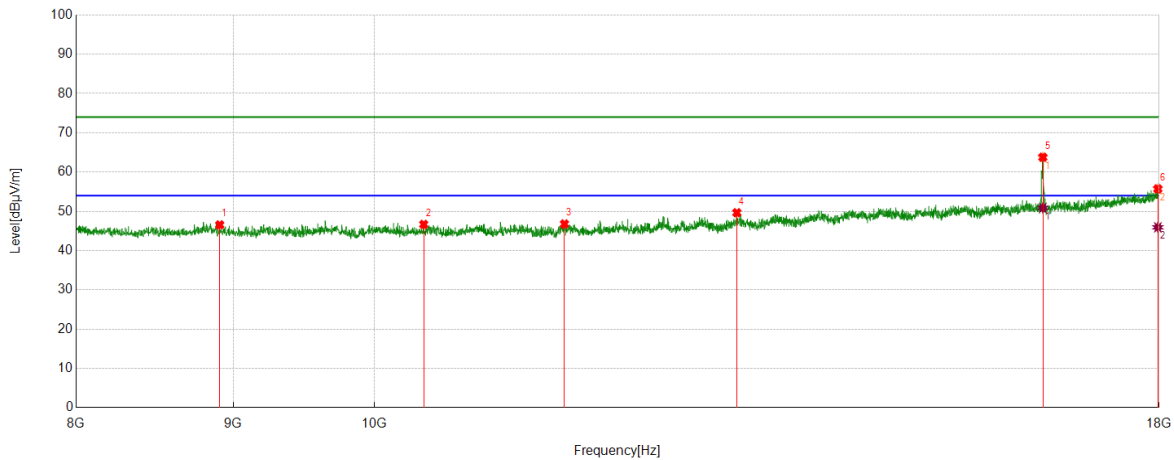
No.	Frequency	Reading Level	Correct Factor	Result	Limit	Margin	Remark
	[MHz]	[dBuV]	[dB/m]	[dBuV/m]	[dBuV/m]	[dB]	
1	8665.1109	43.41	3.14	46.55	74.00	27.45	peak
2	10637.1062	42.05	4.58	46.63	74.00	27.37	peak
3	12039.0065	40.39	6.99	47.38	74.00	26.62	peak
4	13875.9793	39.84	10.24	50.08	74.00	23.92	peak
5	15966.3277	49.59	13.77	63.36	74.00	10.64	peak
6	17974.9958	36.40	18.66	55.06	74.00	18.94	peak

AV Result:

No.	Frequency	Reading Level	Correct Factor	Result	Limit	Margin	Remark
	[MHz]	[dBuV]	[dB/m]	[dBuV/m]	[dBuV/m]	[dB]	
1	15966.3277	32.89	13.77	46.66	54.00	7.34	AV
2	17974.9958	27.45	18.66	46.11	54.00	7.89	AV

- Remark: 1. Measurement = Reading Level + Correct Factor.  
2. If Peak Result complies with AV limit, AV Result is deemed to comply with AV limit.  
3. Test setup: RBW: 1 MHz, VBW: 3 MHz, Sweep time: auto.  
4. Peak: Peak detector.  
5. AVG: VBW refer to section 6.1.  
6. For above 6.5GHz part, filter losses were only considered in the spurious frequency bands and the authorized band were not corrected for HPF losses. The proper operation of the transmitter prior to adding the filter to the measurement chain.  
7. Only the worst case emission was recorded, if it complies with the limit, the other emissions deemed to comply with the limit.  
8. Since non-restricted band peak emissions are less than the average limit, they also comply with the -27dBm/MHz (68.2dBuV/m) limit.

Test Mode	Channel	Polarization	Verdict
11A	5500	Horizontal	PASS



PK Result:

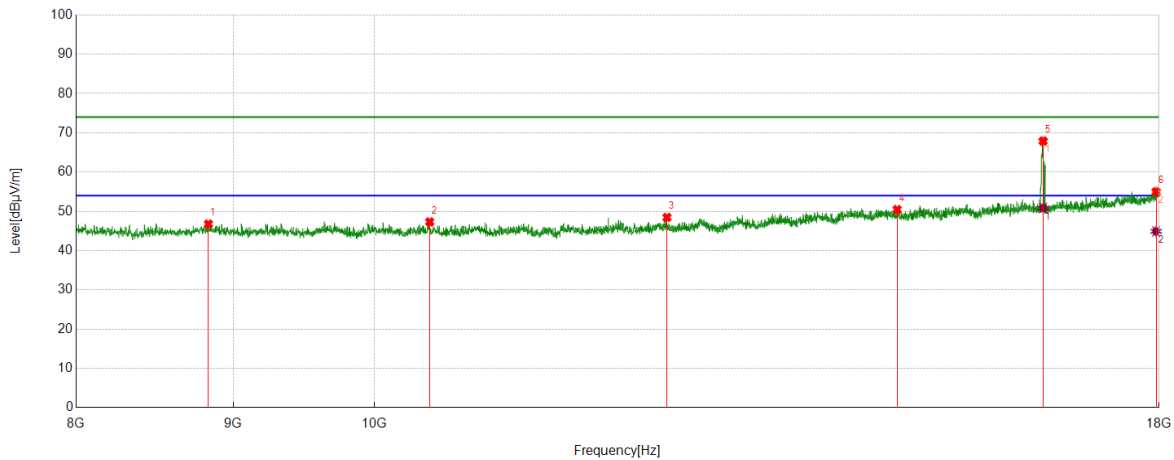
No.	Frequency	Reading Level	Correct Factor	Result	Limit	Margin	Remark
	[MHz]	[dBuV]	[dB/m]	[dBuV/m]	[dBuV/m]	[dB]	
1	8908.4847	43.36	3.19	46.55	74.00	27.45	peak
2	10378.7298	42.28	4.39	46.67	74.00	27.33	peak
3	11532.2554	40.65	6.13	46.78	74.00	27.22	peak
4	13120.8535	41.17	8.48	49.65	74.00	24.35	peak
5	16499.75	49.82	13.95	63.77	74.00	10.23	peak
6	17983.3306	37.12	18.60	55.72	74.00	18.28	peak

AV Result:

No.	Frequency	Reading Level	Correct Factor	Result	Limit	Margin	Remark
	[MHz]	[dBuV]	[dB/m]	[dBuV/m]	[dBuV/m]	[dB]	
1	16499.75	36.93	13.95	50.88	54.00	3.12	AV
2	17983.3306	27.33	18.60	45.93	54.00	8.07	AV

- Remark: 1. Measurement = Reading Level + Correct Factor.  
 2. If Peak Result complies with AV limit, AV Result is deemed to comply with AV limit.  
 3. Test setup: RBW: 1 MHz, VBW: 3 MHz, Sweep time: auto.  
 4. Peak: Peak detector.  
 5. AVG: VBW refer to section 6.1.  
 6. For above 6.5GHz part, filter losses were only considered in the spurious frequency bands and the authorized band were not corrected for HPF losses. The proper operation of the transmitter prior to adding the filter to the measurement chain.  
 7. Only the worst case emission was recorded, if it complies with the limit, the other emissions deemed to comply with the limit.  
 8. Since non-restricted band peak emissions are less than the average limit, they also comply with the -27dBm/MHz (68.2dBuV/m) limit.

Test Mode	Channel	Polarization	Verdict
11A	5500	Vertical	PASS



**PK Result:**

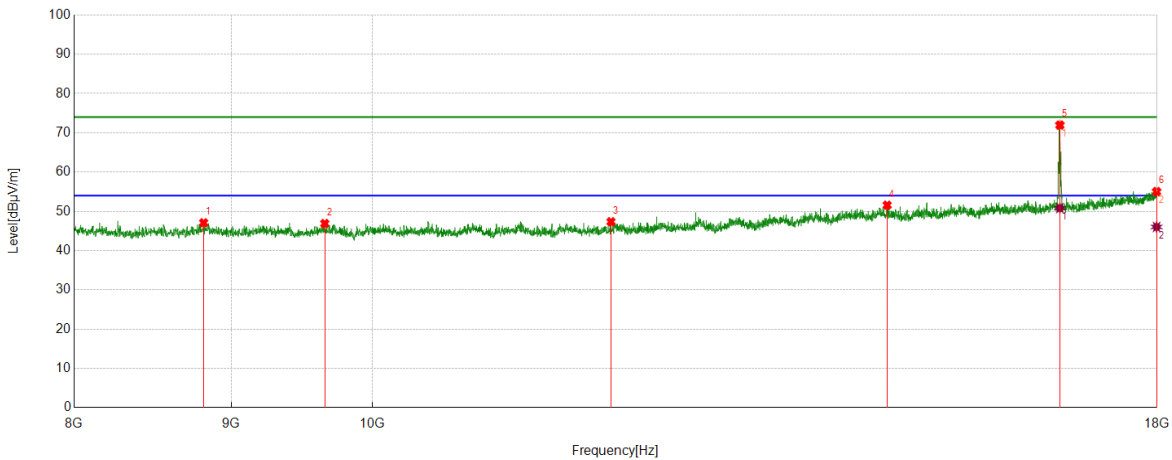
No.	Frequency	Reading Level	Correct Factor	Result	Limit	Margin	Remark
	[MHz]	[dBuV]	[dB/m]	[dBuV/m]	[dBuV/m]	[dB]	
1	8833.4722	43.06	3.71	46.77	74.00	27.23	peak
2	10425.4042	42.90	4.41	47.31	74.00	26.69	peak
3	12452.4087	41.56	6.90	48.46	74.00	25.54	peak
4	14794.4657	39.03	11.42	50.45	74.00	23.55	peak
5	16503.0838	53.77	14.12	67.89	74.00	6.11	peak
6	17959.9933	36.55	18.44	54.99	74.00	19.01	peak

**AV Result:**

No.	Frequency	Reading Level	Correct Factor	Result	Limit	Margin	Remark
	[MHz]	[dBuV]	[dB/m]	[dBuV/m]	[dBuV/m]	[dB]	
1	16503.0838	36.72	14.12	50.84	54.00	3.16	AV
2	17959.9933	26.47	18.44	44.91	54.00	9.09	AV

- Remark:
1. Measurement = Reading Level + Correct Factor.
  2. If Peak Result complies with AV limit, AV Result is deemed to comply with AV limit.
  3. Test setup: RBW: 1 MHz, VBW: 3 MHz, Sweep time: auto.
  4. Peak: Peak detector.
  5. AVG: VBW refer to section 6.1.
  6. For above 6.5GHz part, filter losses were only considered in the spurious frequency bands and the authorized band were not corrected for HPF losses. The proper operation of the transmitter prior to adding the filter to the measurement chain.
  7. Only the worst case emission was recorded, if it complies with the limit, the other emissions deemed to comply with the limit.
  8. Since non-restricted band peak emissions are less than the average limit, they also comply with the -27dBm/MHz (68.2dBuV/m) limit.

Test Mode	Channel	Polarization	Verdict
11A	5580	Horizontal	PASS



**PK Result:**

No.	Frequency	Reading Level	Correct Factor	Result	Limit	Margin	Remark
	[MHz]	[dBuV]	[dB/m]	[dBuV/m]	[dBuV/m]	[dB]	
1	8815.1359	43.31	3.78	47.09	74.00	26.91	peak
2	9651.942	43.00	3.89	46.89	74.00	27.11	peak
3	11958.9932	41.11	6.23	47.34	74.00	26.66	peak
4	14706.1177	39.59	11.98	51.57	74.00	22.43	peak
5	16736.4561	56.84	15.12	71.96	74.00	2.04	peak
6	17993.3322	36.45	18.58	55.03	74.00	18.97	peak

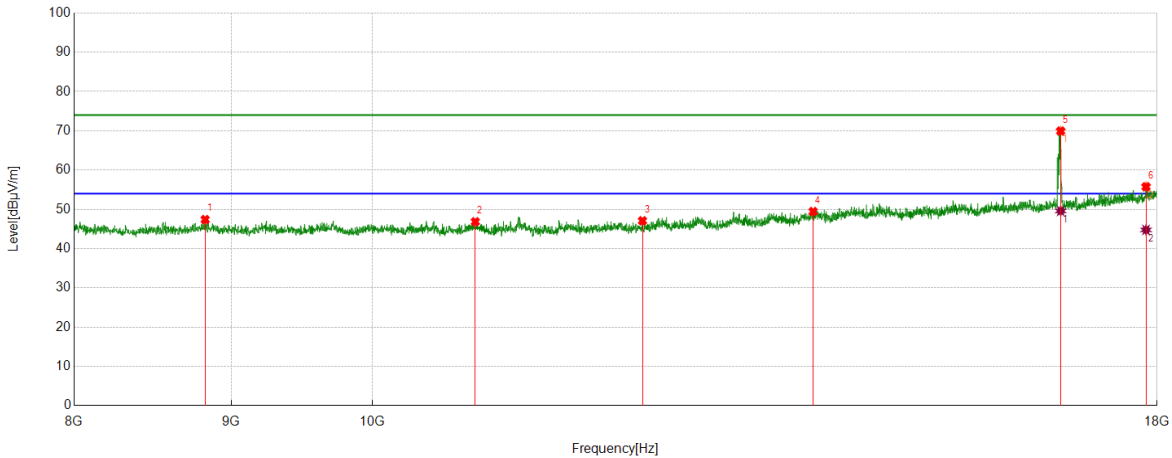
**AV Result:**

No.	Frequency	Reading Level	Correct Factor	Result	Limit	Margin	Remark
	[MHz]	[dBuV]	[dB/m]	[dBuV/m]	[dBuV/m]	[dB]	
1	16736.4561	35.71	15.12	50.83	54.00	3.17	AV
2	17993.3322	27.44	18.58	46.02	54.00	7.98	AV

- Remark: 1. Measurement = Reading Level + Correct Factor.  
2. If Peak Result complies with AV limit, AV Result is deemed to comply with AV limit.  
3. Test setup: RBW: 1 MHz, VBW: 3 MHz, Sweep time: auto.  
4. Peak: Peak detector.  
5. AVG: VBW refer to section 6.1.  
6. For above 6.5GHz part, filter losses were only considered in the spurious frequency bands and the authorized band were not corrected for HPF losses. The proper operation of the transmitter prior to adding the filter to the measurement chain.  
7. Only the worst case emission was recorded, if it complies with the limit, the other emissions deemed to comply with the limit.  
8. Since non-restricted band peak emissions are less than the average limit, they also comply with the -27dBm/MHz (68.2dBuV/m) limit.



Test Mode	Channel	Polarization	Verdict
11A	5580	Vertical	PASS



**PK Result:**

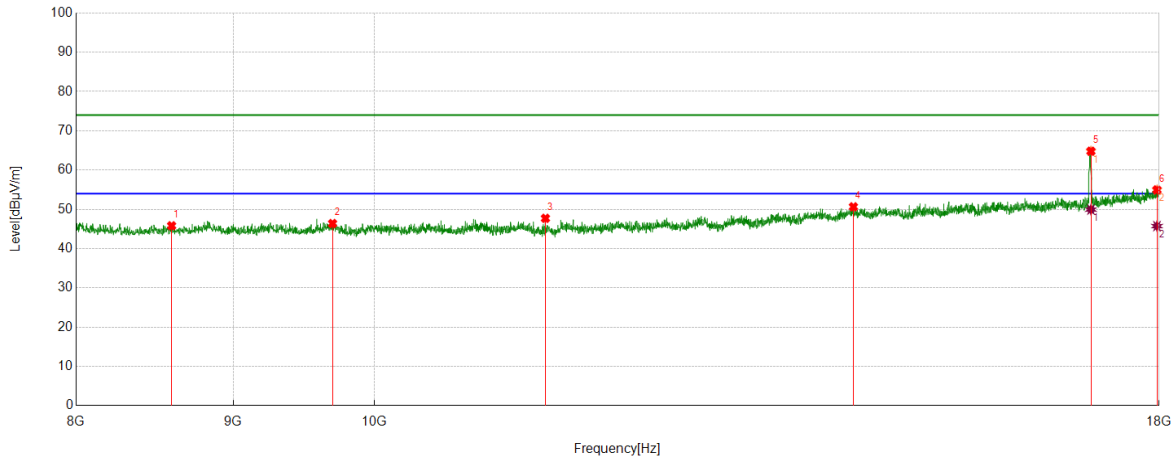
No.	Frequency	Reading Level	Correct Factor	Result	Limit	Margin	Remark
	[MHz]	[dBuV]	[dB/m]	[dBuV/m]	[dBuV/m]	[dB]	
1	8825.1375	43.72	3.68	47.40	74.00	26.60	peak
2	10803.8006	42.03	4.81	46.84	74.00	27.16	peak
3	12244.0407	40.31	6.77	47.08	74.00	26.92	peak
4	13912.6521	38.84	10.61	49.45	74.00	24.55	peak
5	16746.4577	54.89	15.04	69.93	74.00	4.07	peak
6	17851.6419	37.09	18.66	55.75	74.00	18.25	peak

**AV Result:**

No.	Frequency	Reading Level	Correct Factor	Result	Limit	Margin	Remark
	[MHz]	[dBuV]	[dB/m]	[dBuV/m]	[dBuV/m]	[dB]	
1	16746.4577	34.55	15.04	49.59	54.00	4.41	AV
2	17851.6419	26.10	18.66	44.76	54.00	9.24	AV

- Remark: 1. Measurement = Reading Level + Correct Factor.  
 2. If Peak Result complies with AV limit, AV Result is deemed to comply with AV limit.  
 3. Test setup: RBW: 1 MHz, VBW: 3 MHz, Sweep time: auto.  
 4. Peak: Peak detector.  
 5. AVG: VBW refer to section 6.1.  
 6. For above 6.5GHz part, filter losses were only considered in the spurious frequency bands and the authorized band were not corrected for HPF losses. The proper operation of the transmitter prior to adding the filter to the measurement chain.  
 7. Only the worst case emission was recorded, if it complies with the limit, the other emissions deemed to comply with the limit.  
 8. Since non-restricted band peak emissions are less than the average limit, they also comply with the -27dBm/MHz (68.2dBuV/m) limit.

Test Mode	Channel	Polarization	Verdict
11A	5700	Horizontal	PASS



**PK Result:**

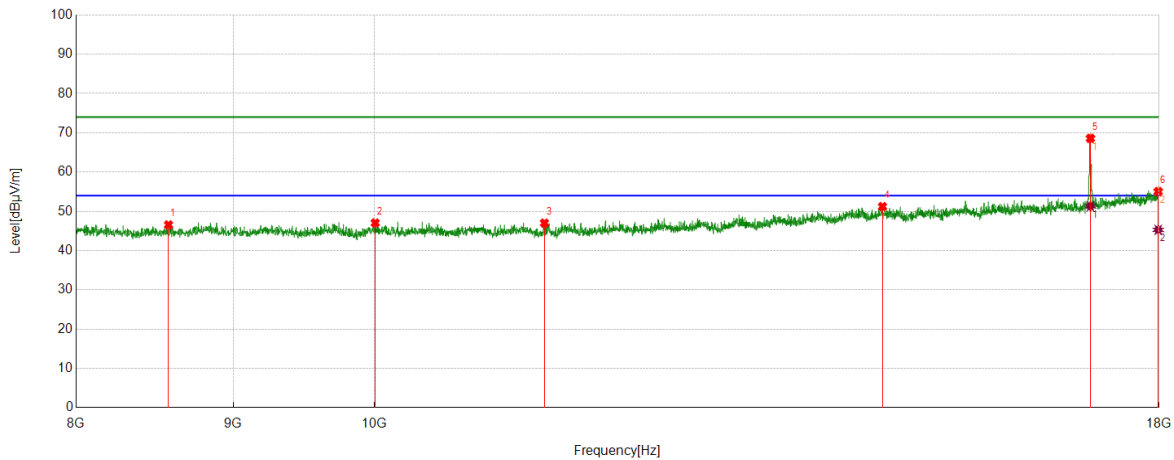
No.	Frequency	Reading Level	Correct Factor	Result	Limit	Margin	Remark
	[MHz]	[dBuV]	[dB/m]	[dBuV/m]	[dBuV/m]	[dB]	
1	8593.4322	42.81	3.00	45.81	74.00	28.19	peak
2	9693.6156	42.31	4.07	46.38	74.00	27.62	peak
3	11368.8948	42.19	5.51	47.70	74.00	26.30	peak
4	14317.7196	39.09	11.55	50.64	74.00	23.36	peak
5	17104.8508	49.52	15.28	64.80	74.00	9.20	peak
6	17971.6619	36.27	18.68	54.95	74.00	19.05	peak

**AV Result:**

No.	Frequency	Reading Level	Correct Factor	Result	Limit	Margin	Remark
	[MHz]	[dBuV]	[dB/m]	[dBuV/m]	[dBuV/m]	[dB]	
1	17104.8508	34.65	15.28	49.93	54.00	4.07	AV
2	17971.6619	27.04	18.68	45.72	54.00	8.28	AV

- Remark: 1. Measurement = Reading Level + Correct Factor.  
 2. If Peak Result complies with AV limit, AV Result is deemed to comply with AV limit.  
 3. Test setup: RBW: 1 MHz, VBW: 3 MHz, Sweep time: auto.  
 4. Peak: Peak detector.  
 5. AVG: VBW refer to section 6.1.  
 6. For above 6.5GHz part, filter losses were only considered in the spurious frequency bands and the authorized band were not corrected for HPF losses. The proper operation of the transmitter prior to adding the filter to the measurement chain.  
 7. Only the worst case emission was recorded, if it complies with the limit, the other emissions deemed to comply with the limit.  
 8. Since non-restricted band peak emissions are less than the average limit, they also comply with the -27dBm/MHz (68.2dBuV/m) limit.

Test Mode	Channel	Polarization	Verdict
11A	5700	Vertical	PASS



**PK Result:**

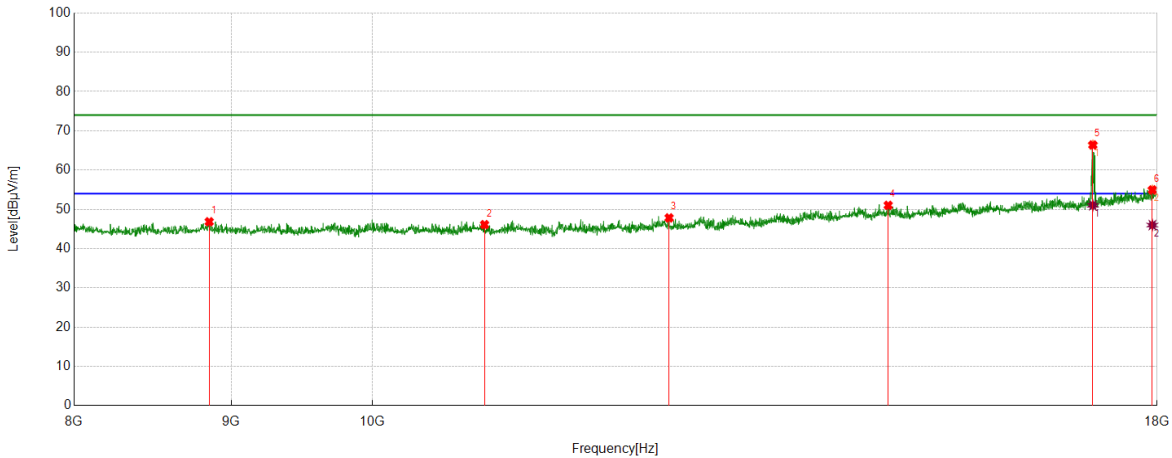
No.	Frequency	Reading Level	Correct Factor	Result	Limit	Margin	Remark
	[MHz]	[dBuV]	[dB/m]	[dBuV/m]	[dBuV/m]	[dB]	
1	8573.4289	43.49	3.06	46.55	74.00	27.45	peak
2	10008.6681	42.85	4.19	47.04	74.00	26.96	peak
3	11360.5601	41.29	5.71	47.00	74.00	27.00	peak
4	14632.7721	39.47	11.74	51.21	74.00	22.79	peak
5	17098.183	53.20	15.39	68.59	74.00	5.41	peak
6	17988.3314	36.50	18.54	55.04	74.00	18.96	peak

**AV Result:**

No.	Frequency	Reading Level	Correct Factor	Result	Limit	Margin	Remark
	[MHz]	[dBuV]	[dB/m]	[dBuV/m]	[dBuV/m]	[dB]	
1	17098.183	35.91	15.39	51.30	54.00	2.70	AV
2	17988.3314	26.75	18.54	45.29	54.00	8.71	AV

- Remark:
1. Measurement = Reading Level + Correct Factor.
  2. If Peak Result complies with AV limit, AV Result is deemed to comply with AV limit.
  3. Test setup: RBW: 1 MHz, VBW: 3 MHz, Sweep time: auto.
  4. Peak: Peak detector.
  5. AVG: VBW refer to section 6.1.
  6. For above 6.5GHz part, filter losses were only considered in the spurious frequency bands and the authorized band were not corrected for HPF losses. The proper operation of the transmitter prior to adding the filter to the measurement chain.
  7. Only the worst case emission was recorded, if it complies with the limit, the other emissions deemed to comply with the limit.
  8. Since non-restricted band peak emissions are less than the average limit, they also comply with the -27dBm/MHz (68.2dBuV/m) limit.

Test Mode	Channel	Polarization	Verdict
11A	5720	Horizontal	PASS



**PK Result:**

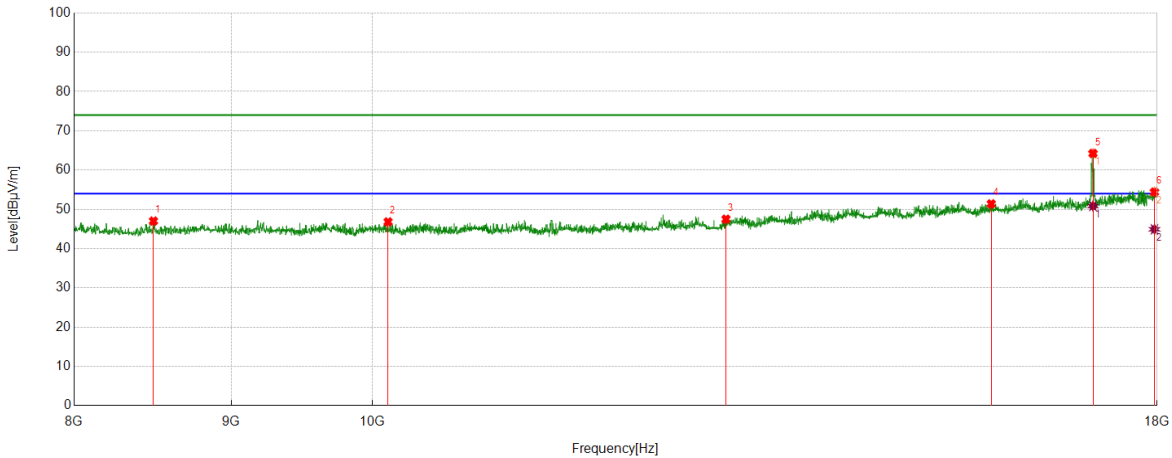
No.	Frequency	Reading Level	Correct Factor	Result	Limit	Margin	Remark
	[MHz]	[dBuV]	[dB/m]	[dBuV/m]	[dBuV/m]	[dB]	
1	8851.8086	43.05	3.79	46.84	74.00	27.16	peak
2	10878.8131	41.56	4.54	46.10	74.00	27.90	peak
3	12490.7485	40.82	7.00	47.82	74.00	26.18	peak
4	14717.7863	39.20	11.82	51.02	74.00	22.98	peak
5	17154.8591	50.69	15.70	66.39	74.00	7.61	peak
6	17936.6561	36.31	18.63	54.94	74.00	19.06	peak

**AV Result:**

No.	Frequency	Reading Level	Correct Factor	Result	Limit	Margin	Remark
	[MHz]	[dBuV]	[dB/m]	[dBuV/m]	[dBuV/m]	[dB]	
1	17154.8591	35.33	15.70	51.03	54.00	2.97	AV
2	17936.6561	27.36	18.63	45.99	54.00	8.01	AV

- Remark: 1. Measurement = Reading Level + Correct Factor.  
 2. If Peak Result complies with AV limit, AV Result is deemed to comply with AV limit.  
 3. Test setup: RBW: 1 MHz, VBW: 3 MHz, Sweep time: auto.  
 4. Peak: Peak detector.  
 5. AVG: VBW refer to section 6.1.  
 6. For above 6.5GHz part, filter losses were only considered in the spurious frequency bands and the authorized band were not corrected for HPF losses. The proper operation of the transmitter prior to adding the filter to the measurement chain.  
 7. Only the worst case emission was recorded, if it complies with the limit, the other emissions deemed to comply with the limit.  
 8. Since non-restricted band peak emissions are less than the average limit, they also comply with the -27dBm/MHz (68.2dBuV/m) limit.

Test Mode	Channel	Polarization	Verdict
11A	5720	Vertical	PASS



**PK Result:**

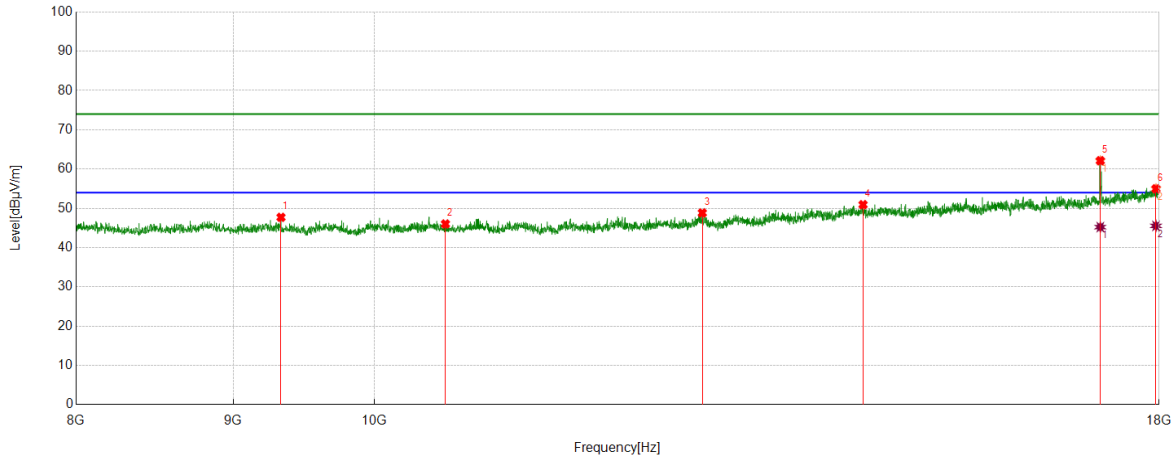
No.	Frequency	Reading Level	Correct Factor	Result	Limit	Margin	Remark
	[MHz]	[dBuV]	[dB/m]	[dBuV/m]	[dBuV/m]	[dB]	
1	8490.0817	44.05	2.97	47.02	74.00	26.98	peak
2	10120.3534	42.53	4.27	46.80	74.00	27.20	peak
3	13034.1724	39.81	7.69	47.50	74.00	26.50	peak
4	15897.983	38.15	13.25	51.40	74.00	22.60	peak
5	17156.5261	48.57	15.67	64.24	74.00	9.76	peak
6	17964.9947	35.88	18.56	54.44	74.00	19.56	peak

**AV Result:**

No.	Frequency	Reading Level	Correct Factor	Result	Limit	Margin	Remark
	[MHz]	[dBuV]	[dB/m]	[dBuV/m]	[dBuV/m]	[dB]	
1	17156.5261	35.17	15.67	50.84	54.00	3.16	AV
2	17964.9947	26.33	18.56	44.89	54.00	9.11	AV

- Remark: 1. Measurement = Reading Level + Correct Factor.  
 2. If Peak Result complies with AV limit, AV Result is deemed to comply with AV limit.  
 3. Test setup: RBW: 1 MHz, VBW: 3 MHz, Sweep time: auto.  
 4. Peak: Peak detector.  
 5. AVG: VBW refer to section 6.1.  
 6. For above 6.5GHz part, filter losses were only considered in the spurious frequency bands and the authorized band were not corrected for HPF losses. The proper operation of the transmitter prior to adding the filter to the measurement chain.  
 7. Only the worst case emission was recorded, if it complies with the limit, the other emissions deemed to comply with the limit.  
 8. Since non-restricted band peak emissions are less than the average limit, they also comply with the -27dBm/MHz (68.2dBuV/m) limit.

Test Mode	Channel	Polarization	Verdict
11A	5745	Horizontal	PASS



PK Result:

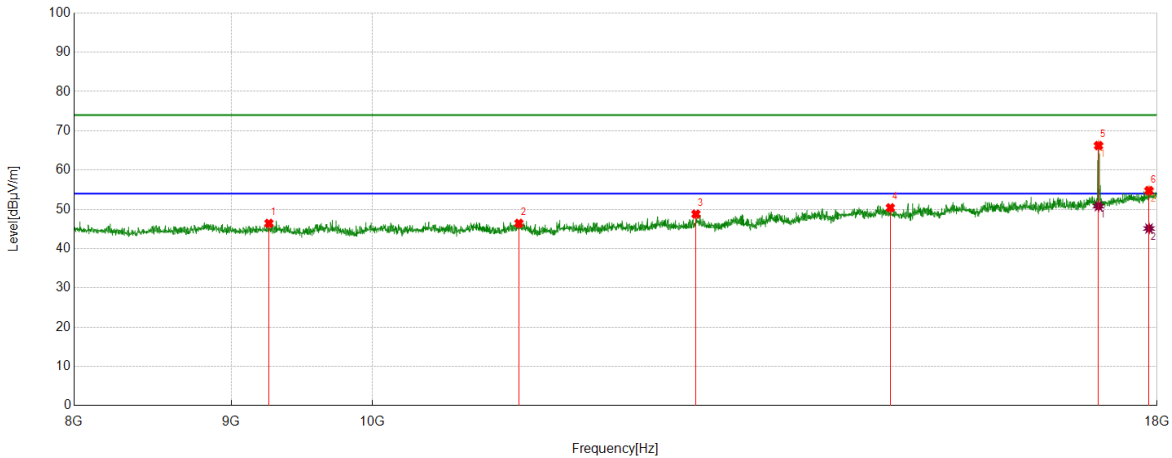
No.	Frequency	Reading Level	Correct Factor	Result	Limit	Margin	Remark
	[MHz]	[dBuV]	[dB/m]	[dBuV/m]	[dBuV/m]	[dB]	
1	9326.8878	44.06	3.65	47.71	74.00	26.29	peak
2	10548.7581	41.64	4.38	46.02	74.00	27.98	peak
3	12785.7976	41.19	7.64	48.83	74.00	25.17	peak
4	14421.0702	39.54	11.39	50.93	74.00	23.07	peak
5	17224.8708	46.28	15.84	62.12	74.00	11.88	peak
6	17958.3264	36.57	18.41	54.98	74.00	19.02	peak

AV Result:

No.	Frequency	Reading Level	Correct Factor	Result	Limit	Margin	Remark
	[MHz]	[dBuV]	[dB/m]	[dBuV/m]	[dBuV/m]	[dB]	
1	17224.8708	29.38	15.84	45.22	54.00	8.78	AV
2	17958.3264	27.12	18.41	45.53	54.00	8.47	AV

- Remark: 1. Measurement = Reading Level + Correct Factor.  
 2. If Peak Result complies with AV limit, AV Result is deemed to comply with AV limit.  
 3. Test setup: RBW: 1 MHz, VBW: 3 MHz, Sweep time: auto.  
 4. Peak: Peak detector.  
 5. AVG: VBW refer to section 6.1.  
 6. For above 6.5GHz part, filter losses were only considered in the spurious frequency bands and the authorized band were not corrected for HPF losses. The proper operation of the transmitter prior to adding the filter to the measurement chain.  
 7. Only the worst case emission was recorded, if it complies with the limit, the other emissions deemed to comply with the limit.  
 8. Since non-restricted band peak emissions are less than the average limit, they also comply with the -27dBm/MHz (68.2dBuV/m) limit.

Test Mode	Channel	Polarization	Verdict
11A	5745	Vertical	PASS



**PK Result:**

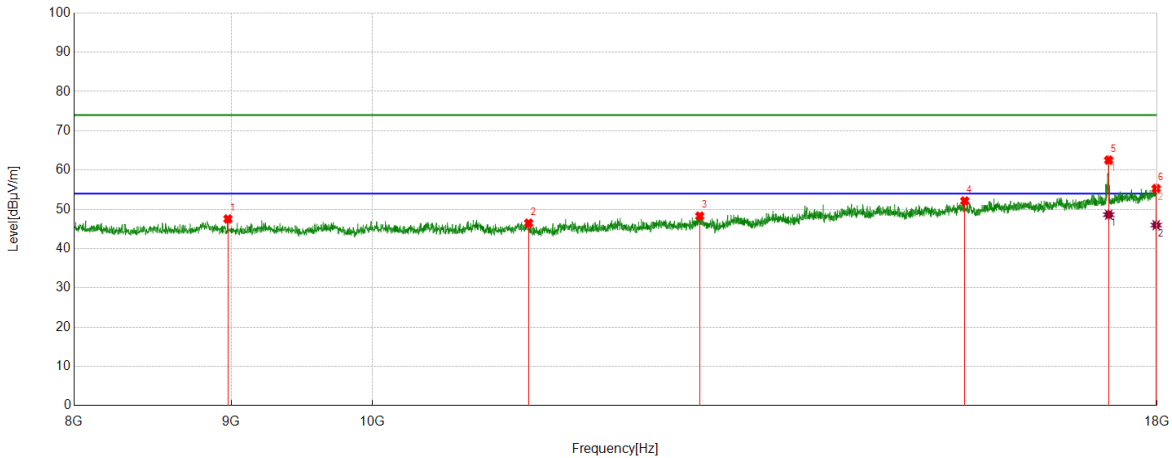
No.	Frequency	Reading Level	Correct Factor	Result	Limit	Margin	Remark
	[MHz]	[dBuV]	[dB/m]	[dBuV/m]	[dBuV/m]	[dB]	
1	9256.8761	43.15	3.28	46.43	74.00	27.57	peak
2	11162.1937	41.10	5.33	46.43	74.00	27.57	peak
3	12744.124	41.34	7.43	48.77	74.00	25.23	peak
4	14741.1235	39.06	11.33	50.39	74.00	23.61	peak
5	17228.2047	50.18	16.05	66.23	74.00	7.77	peak
6	17891.6486	35.77	19.00	54.77	74.00	19.23	peak

**AV Result:**

No.	Frequency	Reading Level	Correct Factor	Result	Limit	Margin	Remark
	[MHz]	[dBuV]	[dB/m]	[dBuV/m]	[dBuV/m]	[dB]	
1	17228.2047	34.76	16.05	50.81	54.00	3.19	AV
2	17891.6486	26.12	19.00	45.12	54.00	8.88	AV

- Remark: 1. Measurement = Reading Level + Correct Factor.  
 2. If Peak Result complies with AV limit, AV Result is deemed to comply with AV limit.  
 3. Test setup: RBW: 1 MHz, VBW: 3 MHz, Sweep time: auto.  
 4. Peak: Peak detector.  
 5. AVG: VBW refer to section 6.1.  
 6. For above 6.5GHz part, filter losses were only considered in the spurious frequency bands and the authorized band were not corrected for HPF losses. The proper operation of the transmitter prior to adding the filter to the measurement chain.  
 7. Only the worst case emission was recorded, if it complies with the limit, the other emissions deemed to comply with the limit.  
 8. Since non-restricted band peak emissions are less than the average limit, they also comply with the -27dBm/MHz (68.2dBuV/m) limit.

Test Mode	Channel	Polarization	Verdict
11A	5785	Horizontal	PASS



**PK Result:**

No.	Frequency	Reading Level	Correct Factor	Result	Limit	Margin	Remark
	[MHz]	[dBuV]	[dB/m]	[dBuV/m]	[dBuV/m]	[dB]	
1	8976.8295	44.60	2.96	47.56	74.00	26.44	peak
2	11243.874	41.15	5.34	46.49	74.00	27.51	peak
3	12780.7968	40.64	7.65	48.29	74.00	25.71	peak
4	15586.2644	39.12	13.02	52.14	74.00	21.86	peak
5	17359.8933	45.82	16.71	62.53	74.00	11.47	peak
6	17988.3314	36.76	18.54	55.30	74.00	18.70	peak

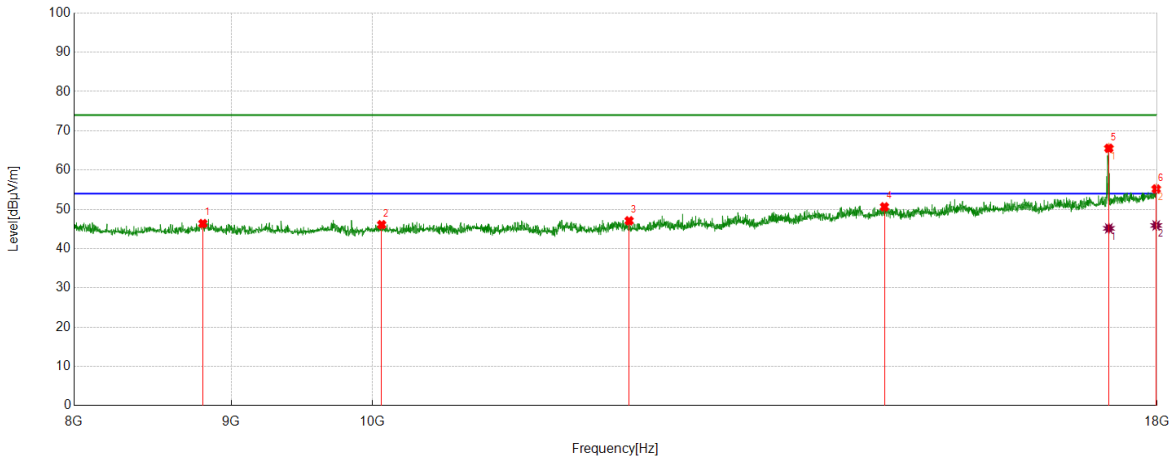
**AV Result:**

No.	Frequency	Reading Level	Correct Factor	Result	Limit	Margin	Remark
	[MHz]	[dBuV]	[dB/m]	[dBuV/m]	[dBuV/m]	[dB]	
1	17359.8933	31.93	16.71	48.64	54.00	5.36	AV
2	17988.3314	27.45	18.54	45.99	54.00	8.01	AV

- Remark: 1. Measurement = Reading Level + Correct Factor.  
 2. If Peak Result complies with AV limit, AV Result is deemed to comply with AV limit.  
 3. Test setup: RBW: 1 MHz, VBW: 3 MHz, Sweep time: auto.  
 4. Peak: Peak detector.  
 5. AVG: VBW refer to section 6.1.  
 6. For above 6.5GHz part, filter losses were only considered in the spurious frequency bands and the authorized band were not corrected for HPF losses. The proper operation of the transmitter prior to adding the filter to the measurement chain.  
 7. Only the worst case emission was recorded, if it complies with the limit, the other emissions deemed to comply with the limit.  
 8. Since non-restricted band peak emissions are less than the average limit, they also comply with the -27dBm/MHz (68.2dBuV/m) limit.



Test Mode	Channel	Polarization	Verdict
11A	5785	Vertical	PASS



**PK Result:**

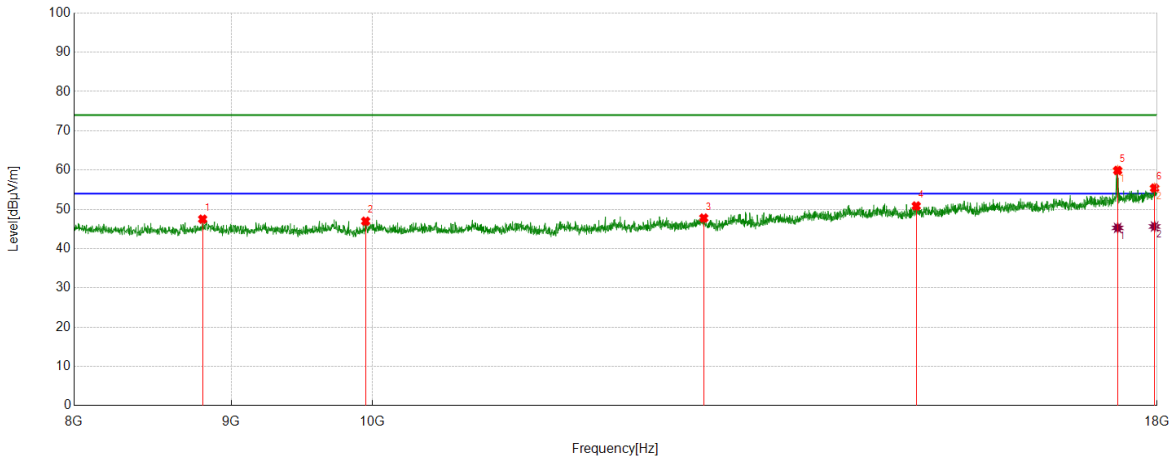
No.	Frequency	Reading Level	Correct Factor	Result	Limit	Margin	Remark
	[MHz]	[dBuV]	[dB/m]	[dBuV/m]	[dBuV/m]	[dB]	
1	8810.135	42.41	3.97	46.38	74.00	27.62	peak
2	10072.012	41.75	4.33	46.08	74.00	27.92	peak
3	12122.3537	40.31	6.77	47.08	74.00	26.92	peak
4	14676.1127	39.02	11.61	50.63	74.00	23.37	peak
5	17361.5603	48.90	16.64	65.54	74.00	8.46	peak
6	17988.3333	36.71	18.54	55.25	74.00	18.75	peak

**AV Result:**

No.	Frequency	Reading Level	Correct Factor	Result	Limit	Margin	Remark
	[MHz]	[dBuV]	[dB/m]	[dBuV/m]	[dBuV/m]	[dB]	
1	17361.5603	28.51	16.64	45.15	54.00	8.85	AV
2	17988.3333	27.28	18.54	45.82	54.00	8.18	AV

- Remark: 1. Measurement = Reading Level + Correct Factor.  
 2. If Peak Result complies with AV limit, AV Result is deemed to comply with AV limit.  
 3. Test setup: RBW: 1 MHz, VBW: 3 MHz, Sweep time: auto.  
 4. Peak: Peak detector.  
 5. AVG: VBW refer to section 6.1.  
 6. For above 6.5GHz part, filter losses were only considered in the spurious frequency bands and the authorized band were not corrected for HPF losses. The proper operation of the transmitter prior to adding the filter to the measurement chain.  
 7. Only the worst case emission was recorded, if it complies with the limit, the other emissions deemed to comply with the limit.  
 8. Since non-restricted band peak emissions are less than the average limit, they also comply with the -27dBm/MHz (68.2dBuV/m) limit.

Test Mode	Channel	Polarization	Verdict
11A	5825	Horizontal	PASS



**PK Result:**

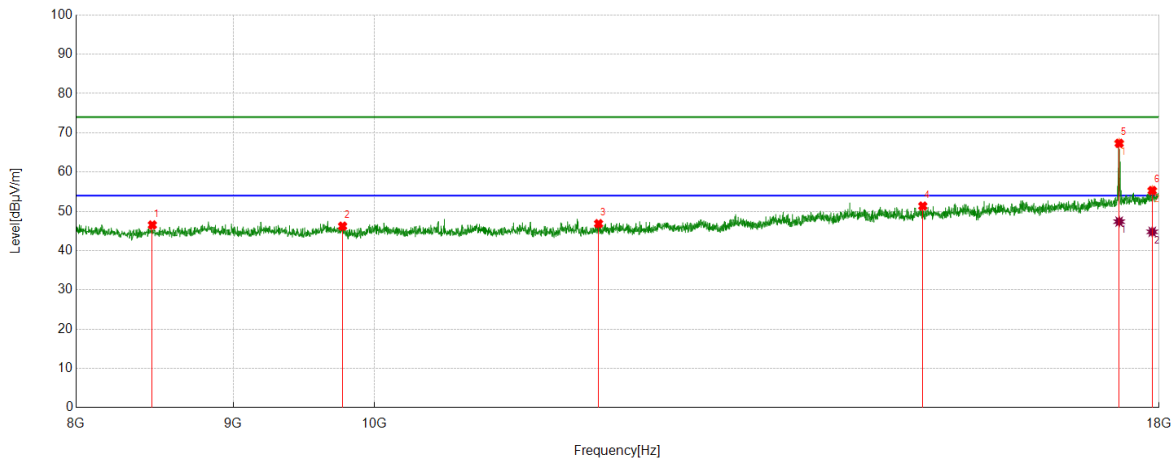
No.	Frequency	Reading Level	Correct Factor	Result	Limit	Margin	Remark
	[MHz]	[dBuV]	[dB/m]	[dBuV/m]	[dBuV/m]	[dB]	
1	8808.4681	43.58	3.92	47.50	74.00	26.50	peak
2	9951.992	42.73	4.24	46.97	74.00	27.03	peak
3	12819.1365	40.28	7.50	47.78	74.00	26.22	peak
4	15029.5049	39.02	11.83	50.85	74.00	23.15	peak
5	17476.5794	42.41	17.49	59.90	74.00	14.10	peak
6	17966.6611	36.80	18.61	55.41	74.00	18.59	peak

**AV Result:**

No.	Frequency	Reading Level	Correct Factor	Result	Limit	Margin	Remark
	[MHz]	[dBuV]	[dB/m]	[dBuV/m]	[dBuV/m]	[dB]	
1	17476.5794	27.79	17.49	45.28	54.00	8.72	AV
2	17966.6611	27.02	18.61	45.63	54.00	8.37	AV

- Remark: 1. Measurement = Reading Level + Correct Factor.  
 2. If Peak Result complies with AV limit, AV Result is deemed to comply with AV limit.  
 3. Test setup: RBW: 1 MHz, VBW: 3 MHz, Sweep time: auto.  
 4. Peak: Peak detector.  
 5. AVG: VBW refer to section 6.1.  
 6. For above 6.5GHz part, filter losses were only considered in the spurious frequency bands and the authorized band were not corrected for HPF losses. The proper operation of the transmitter prior to adding the filter to the measurement chain.  
 7. Only the worst case emission was recorded, if it complies with the limit, the other emissions deemed to comply with the limit.  
 8. Since non-restricted band peak emissions are less than the average limit, they also comply with the -27dBm/MHz (68.2dBuV/m) limit.

Test Mode	Channel	Polarization	Verdict
11A	5825	Vertical	PASS



**PK Result:**

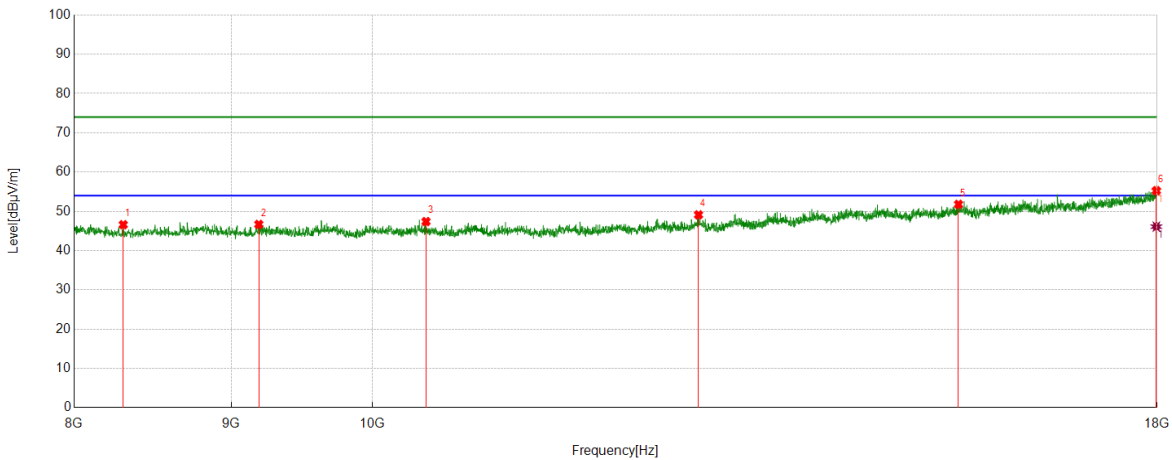
No.	Frequency	Reading Level	Correct Factor	Result	Limit	Margin	Remark
	[MHz]	[dBuV]	[dB/m]	[dBuV/m]	[dBuV/m]	[dB]	
1	8470.0783	43.49	3.03	46.52	74.00	27.48	peak
2	9766.9612	41.86	4.36	46.22	74.00	27.78	peak
3	11830.6384	40.54	6.31	46.85	74.00	27.15	peak
4	15081.1802	39.05	12.29	51.34	74.00	22.66	peak
5	17469.9117	49.65	17.67	67.32	74.00	6.68	peak
6	17908.3181	36.46	18.83	55.29	74.00	18.71	peak

**AV Result:**

No.	Frequency	Reading Level	Correct Factor	Result	Limit	Margin	Remark
	[MHz]	[dBuV]	[dB/m]	[dBuV/m]	[dBuV/m]	[dB]	
1	17469.9117	29.71	17.67	47.38	54.00	6.62	AV
2	17908.3181	25.95	18.83	44.78	54.00	9.22	AV

- Remark: 1. Measurement = Reading Level + Correct Factor.  
2. If Peak Result complies with AV limit, AV Result is deemed to comply with AV limit.  
3. Test setup: RBW: 1 MHz, VBW: 3 MHz, Sweep time: auto.  
4. Peak: Peak detector.  
5. AVG: VBW refer to section 6.1.  
6. For above 6.5GHz part, filter losses were only considered in the spurious frequency bands and the authorized band were not corrected for HPF losses. The proper operation of the transmitter prior to adding the filter to the measurement chain.  
7. Only the worst case emission was recorded, if it complies with the limit, the other emissions deemed to comply with the limit.  
8. Since non-restricted band peak emissions are less than the average limit, they also comply with the -27dBm/MHz (68.2dBuV/m) limit.

Test Mode	Channel	Polarization	Verdict
11AC20	5180	Horizontal	PASS



**PK Result:**

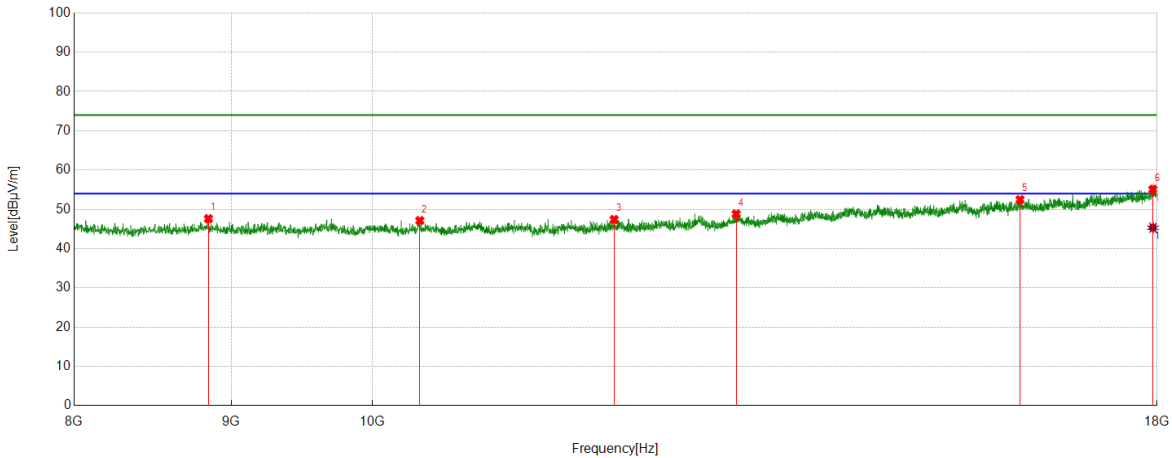
No.	Frequency	Reading Level	Correct Factor	Result	Limit	Margin	Remark
	[MHz]	[dBuV]	[dB/m]	[dBuV/m]	[dBuV/m]	[dB]	
1	8300.05	43.68	2.92	46.60	74.00	27.40	peak
2	9186.8645	43.06	3.62	46.68	74.00	27.32	peak
3	10412.0687	43.13	4.26	47.39	74.00	26.61	peak
4	12769.1282	41.43	7.68	49.11	74.00	24.89	peak
5	15512.9188	38.95	12.83	51.78	74.00	22.22	peak
6	17989.9983	36.72	18.53	55.25	74.00	18.75	peak

**AV Result:**

No.	Frequency	Reading Level	Correct Factor	Result	Limit	Margin	Remark
	[MHz]	[dBuV]	[dB/m]	[dBuV/m]	[dBuV/m]	[dB]	
1	17989.9983	27.57	18.53	46.10	54.00	7.90	AV

- Remark: 1. Measurement = Reading Level + Correct Factor.  
 2. If Peak Result complies with AV limit, AV Result is deemed to comply with AV limit.  
 3. Test setup: RBW: 1 MHz, VBW: 3 MHz, Sweep time: auto.  
 4. Peak: Peak detector.  
 5. AVG: VBW refer to section 6.1.  
 6. For above 6.5GHz part, filter losses were only considered in the spurious frequency bands and the authorized band were not corrected for HPF losses. The proper operation of the transmitter prior to adding the filter to the measurement chain.  
 7. Only the worst case emission was recorded, if it complies with the limit, the other emissions deemed to comply with the limit.  
 8. Since non-restricted band peak emissions are less than the average limit, they also comply with the -27dBm/MHz (68.2dBuV/m) limit.

Test Mode	Channel	Polarization	Verdict
11AC20	5180	Vertical	PASS



**PK Result:**

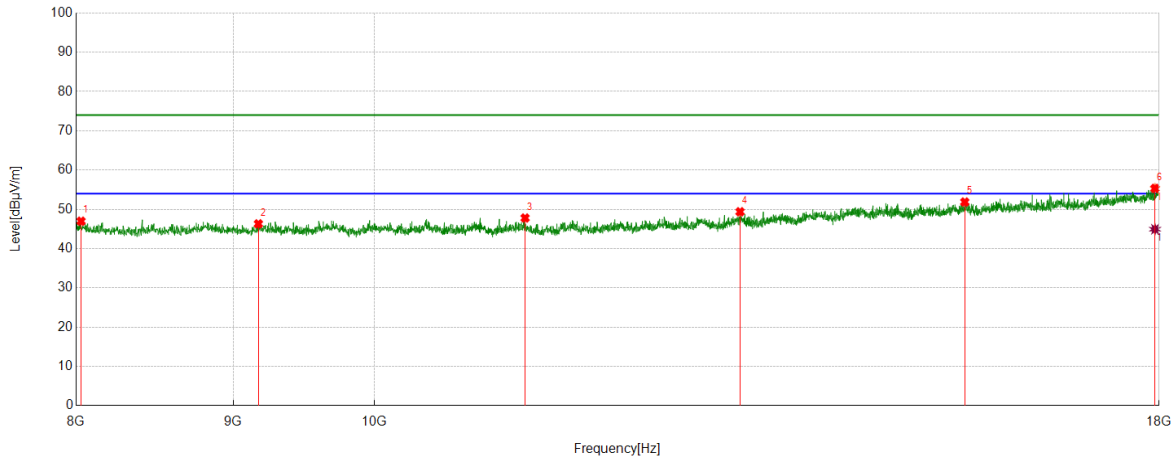
No.	Frequency	Reading Level	Correct Factor	Result	Limit	Margin	Remark
	[MHz]	[dBuV]	[dB/m]	[dBuV/m]	[dBuV/m]	[dB]	
1	8846.8078	43.84	3.77	47.61	74.00	26.39	peak
2	10363.7273	42.81	4.31	47.12	74.00	26.88	peak
3	11987.3312	40.88	6.52	47.40	74.00	26.60	peak
4	13134.189	40.29	8.52	48.81	74.00	25.19	peak
5	16244.7075	38.44	14.02	52.46	74.00	21.54	peak
6	17944.9908	36.64	18.46	55.10	74.00	18.90	peak

**AV Result:**

No.	Frequency	Reading Level	Correct Factor	Result	Limit	Margin	Remark
	[MHz]	[dBuV]	[dB/m]	[dBuV/m]	[dBuV/m]	[dB]	
1	17944.9908	26.86	18.46	45.32	54.00	8.68	AV

- Remark:
1. Measurement = Reading Level + Correct Factor.
  2. If Peak Result complies with AV limit, AV Result is deemed to comply with AV limit.
  3. Test setup: RBW: 1 MHz, VBW: 3 MHz, Sweep time: auto.
  4. Peak: Peak detector.
  5. AVG: VBW refer to section 6.1.
  6. For above 6.5GHz part, filter losses were only considered in the spurious frequency bands and the authorized band were not corrected for HPF losses. The proper operation of the transmitter prior to adding the filter to the measurement chain.
  7. Only the worst case emission was recorded, if it complies with the limit, the other emissions deemed to comply with the limit.
  8. Since non-restricted band peak emissions are less than the average limit, they also comply with the -27dBm/MHz (68.2dBuV/m) limit.

Test Mode	Channel	Polarization	Verdict
11AC20	5200	Horizontal	PASS



**PK Result:**

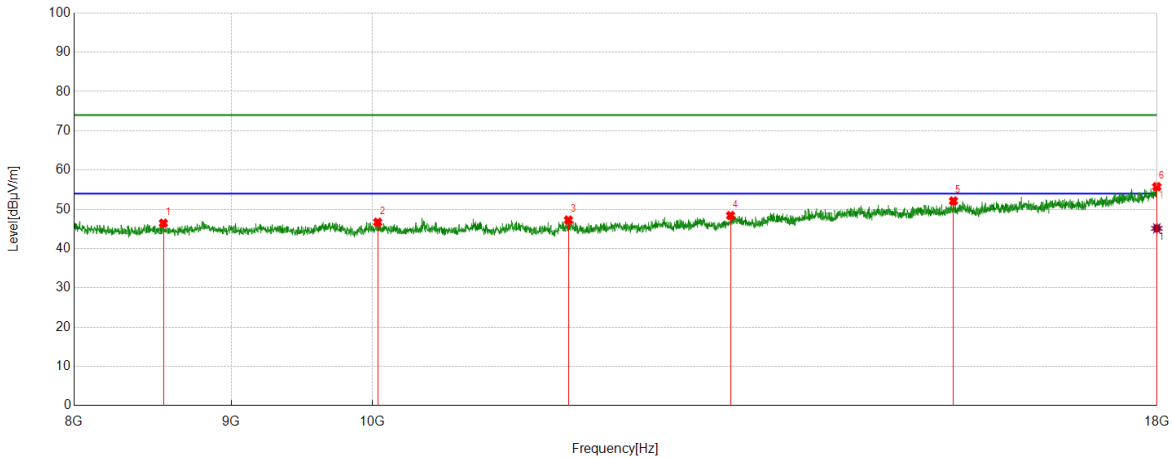
No.	Frequency	Reading Level	Correct Factor	Result	Limit	Margin	Remark
	[MHz]	[dBuV]	[dB/m]	[dBuV/m]	[dBuV/m]	[dB]	
1	8030.005	43.12	3.86	46.98	74.00	27.02	peak
2	9170.195	43.00	3.30	46.30	74.00	27.70	peak
3	11197.1995	42.52	5.27	47.79	74.00	26.21	peak
4	13152.5254	40.98	8.40	49.38	74.00	24.62	peak
5	15562.9272	39.21	12.65	51.86	74.00	22.14	peak
6	17944.9908	36.87	18.46	55.33	74.00	18.67	peak

**AV Result:**

No.	Frequency	Reading Level	Correct Factor	Result	Limit	Margin	Remark
	[MHz]	[dBuV]	[dB/m]	[dBuV/m]	[dBuV/m]	[dB]	
1	17944.9908	26.47	18.46	44.93	54.00	9.07	AV

- Remark: 1. Measurement = Reading Level + Correct Factor.  
 2. If Peak Result complies with AV limit, AV Result is deemed to comply with AV limit.  
 3. Test setup: RBW: 1 MHz, VBW: 3 MHz, Sweep time: auto.  
 4. Peak: Peak detector.  
 5. AVG: VBW refer to section 6.1.  
 6. For above 6.5GHz part, filter losses were only considered in the spurious frequency bands and the authorized band were not corrected for HPF losses. The proper operation of the transmitter prior to adding the filter to the measurement chain.  
 7. Only the worst case emission was recorded, if it complies with the limit, the other emissions deemed to comply with the limit.  
 8. Since non-restricted band peak emissions are less than the average limit, they also comply with the -27dBm/MHz (68.2dBuV/m) limit.

Test Mode	Channel	Polarization	Verdict
11AC20	5200	Vertical	PASS



PK Result:

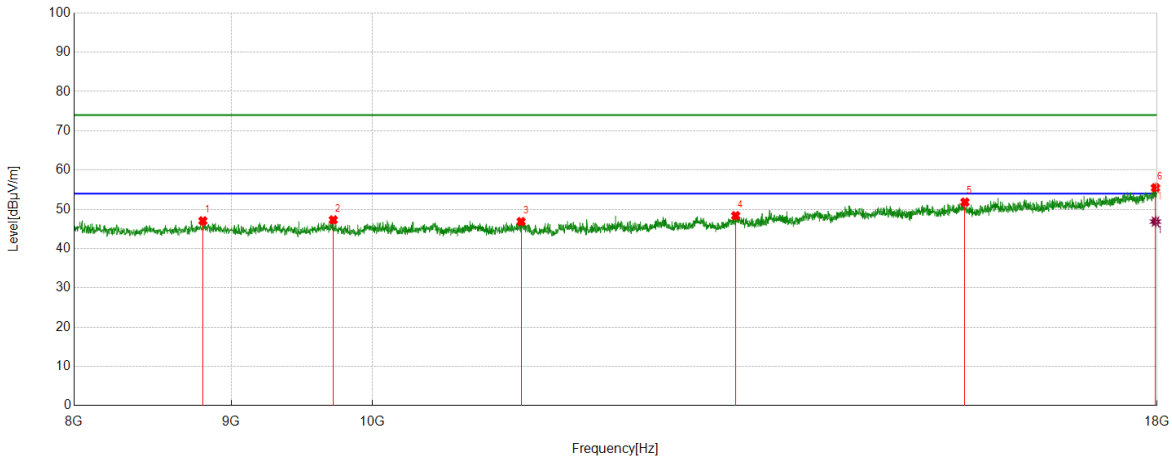
No.	Frequency	Reading Level	Correct Factor	Result	Limit	Margin	Remark
	[MHz]	[dBuV]	[dB/m]	[dBuV/m]	[dBuV/m]	[dB]	
1	8553.4256	43.50	2.97	46.47	74.00	27.53	peak
2	10042.007	42.49	4.22	46.71	74.00	27.29	peak
3	11583.9307	41.71	5.56	47.27	74.00	26.73	peak
4	13079.1799	40.29	8.13	48.42	74.00	25.58	peak
5	15454.5758	38.97	13.17	52.14	74.00	21.86	peak
6	17996.6661	37.12	18.64	55.76	74.00	18.24	peak

AV Result:

No.	Frequency	Reading Level	Correct Factor	Result	Limit	Margin	Remark
	[MHz]	[dBuV]	[dB/m]	[dBuV/m]	[dBuV/m]	[dB]	
1	17996.6661	26.52	18.64	45.16	54.00	8.84	AV

- Remark: 1. Measurement = Reading Level + Correct Factor.  
 2. If Peak Result complies with AV limit, AV Result is deemed to comply with AV limit.  
 3. Test setup: RBW: 1 MHz, VBW: 3 MHz, Sweep time: auto.  
 4. Peak: Peak detector.  
 5. AVG: VBW refer to section 6.1.  
 6. For above 6.5GHz part, filter losses were only considered in the spurious frequency bands and the authorized band were not corrected for HPF losses. The proper operation of the transmitter prior to adding the filter to the measurement chain.  
 7. Only the worst case emission was recorded, if it complies with the limit, the other emissions deemed to comply with the limit.  
 8. Since non-restricted band peak emissions are less than the average limit, they also comply with the -27dBm/MHz (68.2dBuV/m) limit.

Test Mode	Channel	Polarization	Verdict
11AC20	5240	Horizontal	PASS



**PK Result:**

No.	Frequency	Reading Level	Correct Factor	Result	Limit	Margin	Remark
	[MHz]	[dBuV]	[dB/m]	[dBuV/m]	[dBuV/m]	[dB]	
1	8810.135	43.10	3.97	47.07	74.00	26.93	peak
2	9713.6189	42.77	4.54	47.31	74.00	26.69	peak
3	11180.5301	41.40	5.47	46.87	74.00	27.13	peak
4	13129.1882	39.73	8.65	48.38	74.00	25.62	peak
5	15587.9313	38.81	13.02	51.83	74.00	22.17	peak
6	17978.3297	36.85	18.64	55.49	74.00	18.51	peak

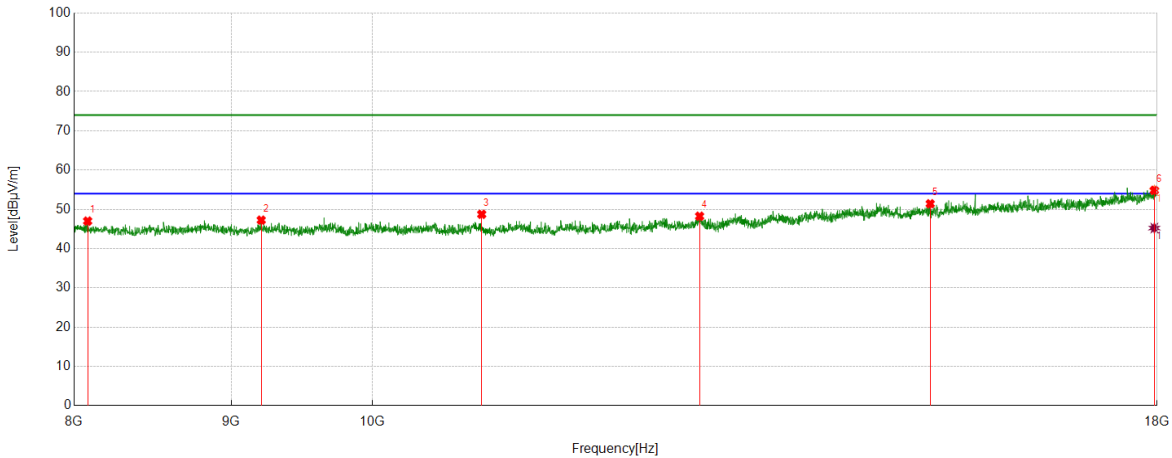
**AV Result:**

No.	Frequency	Reading Level	Correct Factor	Result	Limit	Margin	Remark
	[MHz]	[dBuV]	[dB/m]	[dBuV/m]	[dBuV/m]	[dB]	
1	17978.3297	28.24	18.64	46.88	54.00	7.12	AV

- Remark:
1. Measurement = Reading Level + Correct Factor.
  2. If Peak Result complies with AV limit, AV Result is deemed to comply with AV limit.
  3. Test setup: RBW: 1 MHz, VBW: 3 MHz, Sweep time: auto.
  4. Peak: Peak detector.
  5. AVG: VBW refer to section 6.1.
  6. For above 6.5GHz part, filter losses were only considered in the spurious frequency bands and the authorized band were not corrected for HPF losses. The proper operation of the transmitter prior to adding the filter to the measurement chain.
  7. Only the worst case emission was recorded, if it complies with the limit, the other emissions deemed to comply with the limit.
  8. Since non-restricted band peak emissions are less than the average limit, they also comply with the -27dBm/MHz (68.2dBuV/m) limit.



Test Mode	Channel	Polarization	Verdict
11AC20	5240	Vertical	PASS



**PK Result:**

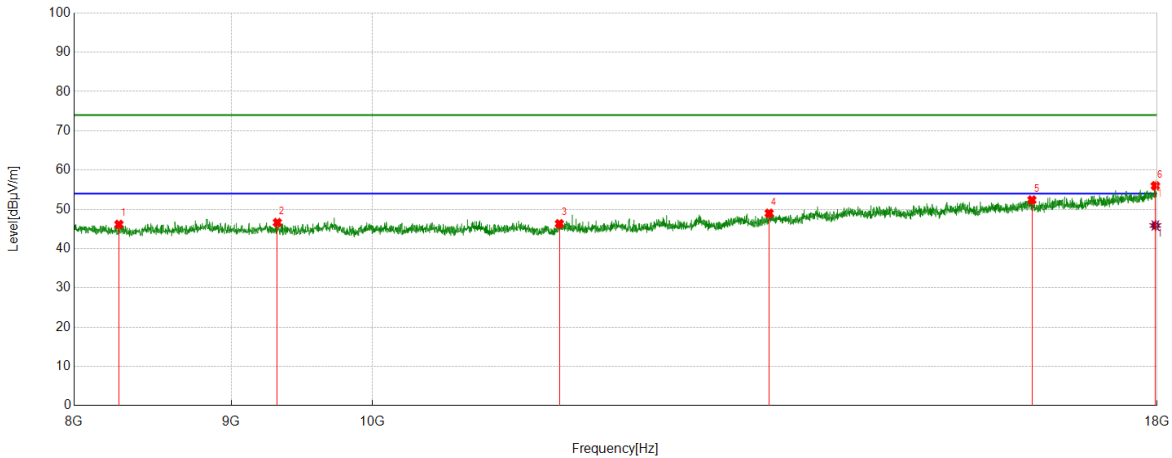
No.	Frequency	Reading Level	Correct Factor	Result	Limit	Margin	Remark
	[MHz]	[dBuV]	[dB/m]	[dBuV/m]	[dBuV/m]	[dB]	
1	8081.6803	43.97	3.04	47.01	74.00	26.99	peak
2	9203.5339	43.66	3.59	47.25	74.00	26.75	peak
3	10855.4759	43.90	4.83	48.73	74.00	25.27	peak
4	12779.1299	40.59	7.66	48.25	74.00	25.75	peak
5	15187.8646	39.16	12.26	51.42	74.00	22.58	peak
6	17963.3272	36.32	18.52	54.84	74.00	19.16	peak

**AV Result:**

No.	Frequency	Reading Level	Correct Factor	Result	Limit	Margin	Remark
	[MHz]	[dBuV]	[dB/m]	[dBuV/m]	[dBuV/m]	[dB]	
1	17963.3272	26.71	18.52	45.23	54.00	8.77	AV

- Remark:
1. Measurement = Reading Level + Correct Factor.
  2. If Peak Result complies with AV limit, AV Result is deemed to comply with AV limit.
  3. Test setup: RBW: 1 MHz, VBW: 3 MHz, Sweep time: auto.
  4. Peak: Peak detector.
  5. AVG: VBW refer to section 6.1.
  6. For above 6.5GHz part, filter losses were only considered in the spurious frequency bands and the authorized band were not corrected for HPF losses. The proper operation of the transmitter prior to adding the filter to the measurement chain.
  7. Only the worst case emission was recorded, if it complies with the limit, the other emissions deemed to comply with the limit.
  8. Since non-restricted band peak emissions are less than the average limit, they also comply with the -27dBm/MHz (68.2dBuV/m) limit.

Test Mode	Channel	Polarization	Verdict
11AC20	5260	Horizontal	PASS



**PK Result:**

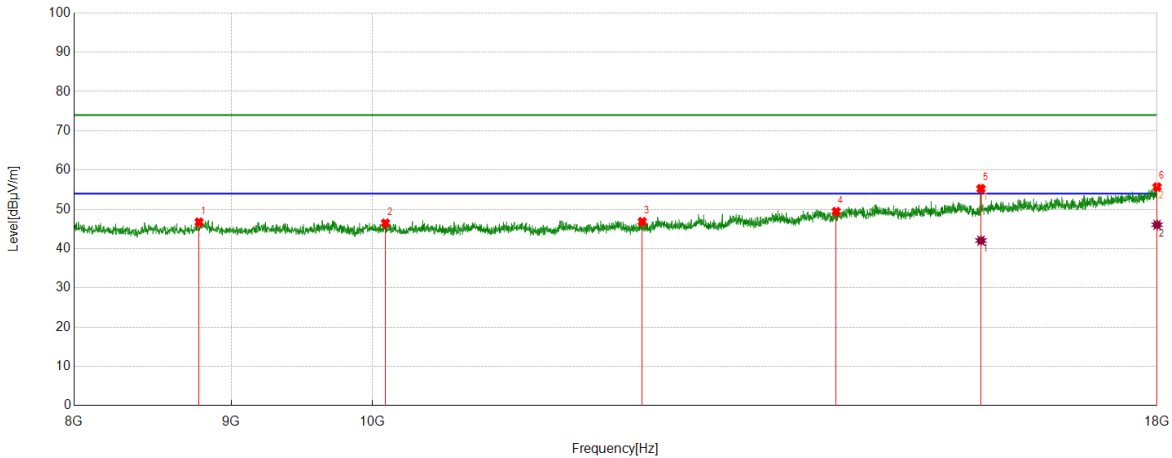
No.	Frequency	Reading Level	Correct Factor	Result	Limit	Margin	Remark
	[MHz]	[dBuV]	[dB/m]	[dBuV/m]	[dBuV/m]	[dB]	
1	8273.3789	43.12	3.04	46.16	74.00	27.84	peak
2	9315.2192	43.17	3.46	46.63	74.00	27.37	peak
3	11505.5843	39.95	6.38	46.33	74.00	27.67	peak
4	13462.5771	39.91	9.09	49.00	74.00	25.00	peak
5	16389.7316	37.84	14.54	52.38	74.00	21.62	peak
6	17976.6628	37.34	18.66	56.00	74.00	18.00	peak

**AV Result:**

No.	Frequency	Reading Level	Correct Factor	Result	Limit	Margin	Remark
	[MHz]	[dBuV]	[dB/m]	[dBuV/m]	[dBuV/m]	[dB]	
1	17976.6628	27.22	18.66	45.88	54.00	8.12	AV

- Remark: 1. Measurement = Reading Level + Correct Factor.  
 2. If Peak Result complies with AV limit, AV Result is deemed to comply with AV limit.  
 3. Test setup: RBW: 1 MHz, VBW: 3 MHz, Sweep time: auto.  
 4. Peak: Peak detector.  
 5. AVG: VBW refer to section 6.1.  
 6. For above 6.5GHz part, filter losses were only considered in the spurious frequency bands and the authorized band were not corrected for HPF losses. The proper operation of the transmitter prior to adding the filter to the measurement chain.  
 7. Only the worst case emission was recorded, if it complies with the limit, the other emissions deemed to comply with the limit.  
 8. Since non-restricted band peak emissions are less than the average limit, they also comply with the -27dBm/MHz (68.2dBuV/m) limit.

Test Mode	Channel	Polarization	Verdict
11AC20	5260	Vertical	PASS



PK Result:

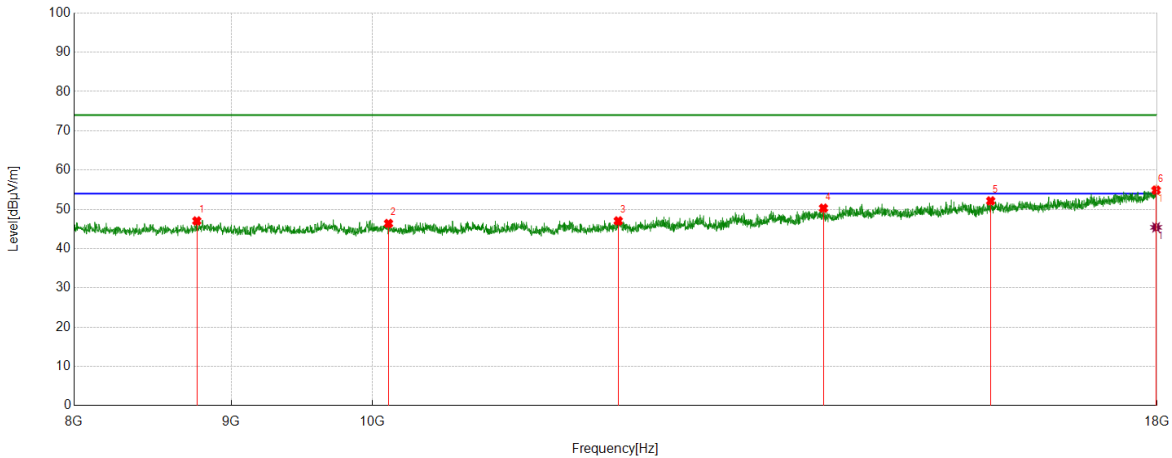
No.	Frequency	Reading Level	Correct Factor	Result	Limit	Margin	Remark
	[MHz]	[dBuV]	[dB/m]	[dBuV/m]	[dBuV/m]	[dB]	
1	8785.1309	43.41	3.34	46.75	74.00	27.25	peak
2	10100.3501	41.94	4.55	46.49	74.00	27.51	peak
3	12242.3737	40.08	6.79	46.87	74.00	27.13	peak
4	14156.026	38.34	11.11	49.45	74.00	24.55	peak
5	15776.296	41.71	13.56	55.27	74.00	18.73	peak
6	18000	37.00	18.69	55.69	74.00	18.31	peak

AV Result:

No.	Frequency	Reading Level	Correct Factor	Result	Limit	Margin	Remark
	[MHz]	[dBuV]	[dB/m]	[dBuV/m]	[dBuV/m]	[dB]	
1	15776.296	28.48	13.56	42.04	54.00	11.96	AV
2	18000	27.36	18.69	46.05	54.00	7.95	AV

- Remark:
1. Measurement = Reading Level + Correct Factor.
  2. If Peak Result complies with AV limit, AV Result is deemed to comply with AV limit.
  3. Test setup: RBW: 1 MHz, VBW: 3 MHz, Sweep time: auto.
  4. Peak: Peak detector.
  5. AVG: VBW refer to section 6.1.
  6. For above 6.5GHz part, filter losses were only considered in the spurious frequency bands and the authorized band were not corrected for HPF losses. The proper operation of the transmitter prior to adding the filter to the measurement chain.
  7. Only the worst case emission was recorded, if it complies with the limit, the other emissions deemed to comply with the limit.
  8. Since non-restricted band peak emissions are less than the average limit, they also comply with the -27dBm/MHz (68.2dBuV/m) limit.

Test Mode	Channel	Polarization	Verdict
11AC20	5280	Horizontal	PASS



**PK Result:**

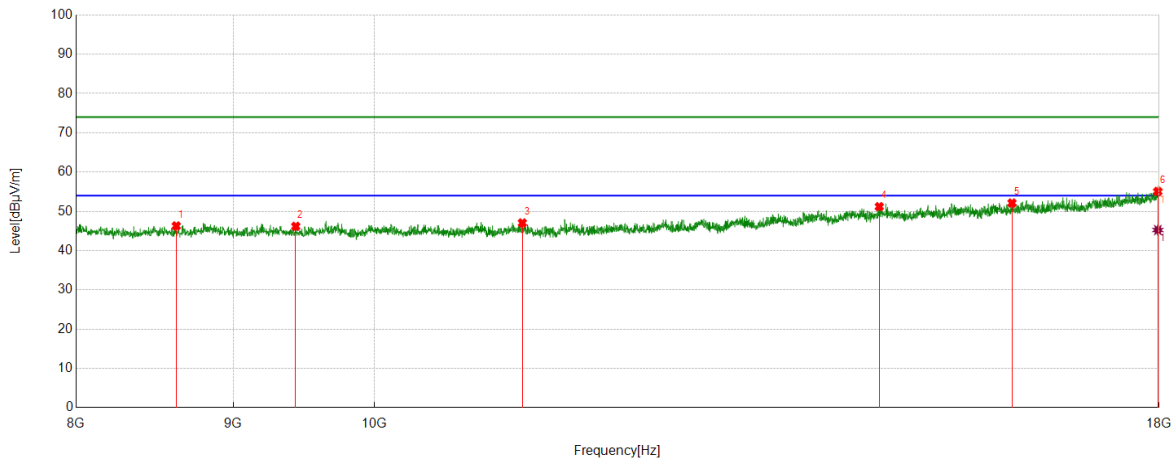
No.	Frequency	Reading Level	Correct Factor	Result	Limit	Margin	Remark
	[MHz]	[dBuV]	[dB/m]	[dBuV/m]	[dBuV/m]	[dB]	
1	8770.1284	43.61	3.43	47.04	74.00	26.96	peak
2	10123.6873	42.15	4.24	46.39	74.00	27.61	peak
3	12024.004	40.39	6.66	47.05	74.00	26.95	peak
4	14021.0035	39.40	10.89	50.29	74.00	23.71	peak
5	15891.3152	38.65	13.50	52.15	74.00	21.85	peak
6	17986.6644	36.32	18.57	54.89	74.00	19.11	peak

**AV Result:**

No.	Frequency	Reading Level	Correct Factor	Result	Limit	Margin	Remark
	[MHz]	[dBuV]	[dB/m]	[dBuV/m]	[dBuV/m]	[dB]	
1	17986.6644	26.84	18.57	45.41	54.00	8.59	AV

- Remark: 1. Measurement = Reading Level + Correct Factor.  
 2. If Peak Result complies with AV limit, AV Result is deemed to comply with AV limit.  
 3. Test setup: RBW: 1 MHz, VBW: 3 MHz, Sweep time: auto.  
 4. Peak: Peak detector.  
 5. AVG: VBW refer to section 6.1.  
 6. For above 6.5GHz part, filter losses were only considered in the spurious frequency bands and the authorized band were not corrected for HPF losses. The proper operation of the transmitter prior to adding the filter to the measurement chain.  
 7. Only the worst case emission was recorded, if it complies with the limit, the other emissions deemed to comply with the limit.  
 8. Since non-restricted band peak emissions are less than the average limit, they also comply with the -27dBm/MHz (68.2dBuV/m) limit.

Test Mode	Channel	Polarization	Verdict
11AC20	5280	Vertical	PASS



**PK Result:**

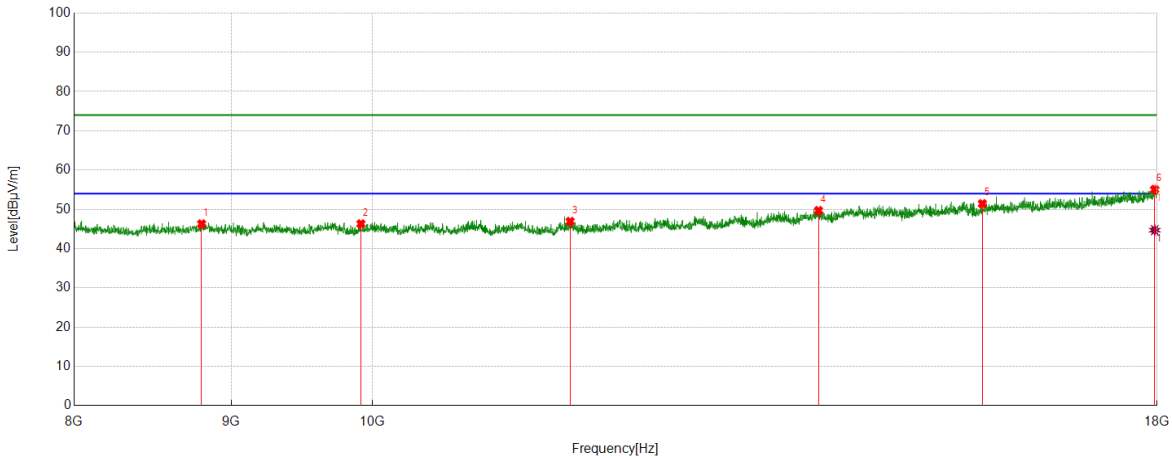
No.	Frequency	Reading Level	Correct Factor	Result	Limit	Margin	Remark
	[MHz]	[dBuV]	[dB/m]	[dBuV/m]	[dBuV/m]	[dB]	
1	8623.4372	43.27	3.01	46.28	74.00	27.72	peak
2	9430.2384	42.48	3.69	46.17	74.00	27.83	peak
3	11173.8623	41.64	5.41	47.05	74.00	26.95	peak
4	14597.7663	39.46	11.73	51.19	74.00	22.81	peak
5	16123.0205	38.38	13.73	52.11	74.00	21.89	peak
6	17983.3306	36.46	18.60	55.06	74.00	18.94	peak

**AV Result:**

No.	Frequency	Reading Level	Correct Factor	Result	Limit	Margin	Remark
	[MHz]	[dBuV]	[dB/m]	[dBuV/m]	[dBuV/m]	[dB]	
1	17983.3306	26.64	18.60	45.24	54.00	8.76	AV

- Remark:
1. Measurement = Reading Level + Correct Factor.
  2. If Peak Result complies with AV limit, AV Result is deemed to comply with AV limit.
  3. Test setup: RBW: 1 MHz, VBW: 3 MHz, Sweep time: auto.
  4. Peak: Peak detector.
  5. AVG: VBW refer to section 6.1.
  6. For above 6.5GHz part, filter losses were only considered in the spurious frequency bands and the authorized band were not corrected for HPF losses. The proper operation of the transmitter prior to adding the filter to the measurement chain.
  7. Only the worst case emission was recorded, if it complies with the limit, the other emissions deemed to comply with the limit.
  8. Since non-restricted band peak emissions are less than the average limit, they also comply with the -27dBm/MHz (68.2dBuV/m) limit.

Test Mode	Channel	Polarization	Verdict
11AC20	5320	Horizontal	PASS



PK Result:

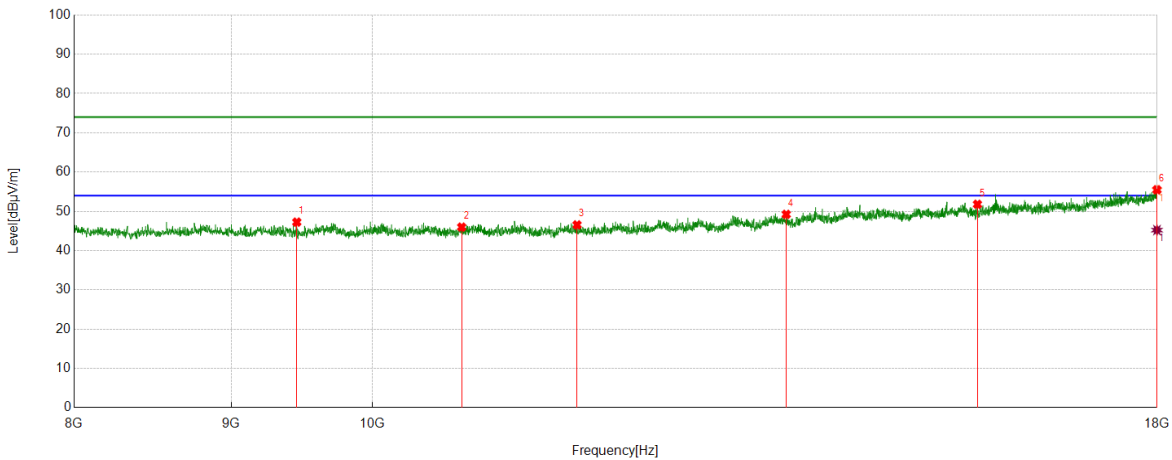
No.	Frequency	Reading Level	Correct Factor	Result	Limit	Margin	Remark
	[MHz]	[dBuV]	[dB/m]	[dBuV/m]	[dBuV/m]	[dB]	
1	8801.8003	42.60	3.68	46.28	74.00	27.72	peak
2	9916.9862	42.01	4.28	46.29	74.00	27.71	peak
3	11598.9332	41.36	5.55	46.91	74.00	27.09	peak
4	13969.3282	38.94	10.73	49.67	74.00	24.33	peak
5	15792.9655	38.07	13.36	51.43	74.00	22.57	peak
6	17968.3281	36.42	18.64	55.06	74.00	18.94	peak

AV Result:

No.	Frequency	Reading Level	Correct Factor	Result	Limit	Margin	Remark
	[MHz]	[dBuV]	[dB/m]	[dBuV/m]	[dBuV/m]	[dB]	
1	17968.3281	26.05	18.64	44.69	54.00	9.31	AV

- Remark:
1. Measurement = Reading Level + Correct Factor.
  2. If Peak Result complies with AV limit, AV Result is deemed to comply with AV limit.
  3. Test setup: RBW: 1 MHz, VBW: 3 MHz, Sweep time: auto.
  4. Peak: Peak detector.
  5. AVG: VBW refer to section 6.1.
  6. For above 6.5GHz part, filter losses were only considered in the spurious frequency bands and the authorized band were not corrected for HPF losses. The proper operation of the transmitter prior to adding the filter to the measurement chain.
  7. Only the worst case emission was recorded, if it complies with the limit, the other emissions deemed to comply with the limit.
  8. Since non-restricted band peak emissions are less than the average limit, they also comply with the -27dBm/MHz (68.2dBuV/m) limit.

Test Mode	Channel	Polarization	Verdict
11AC20	5320	Vertical	PASS



**PK Result:**

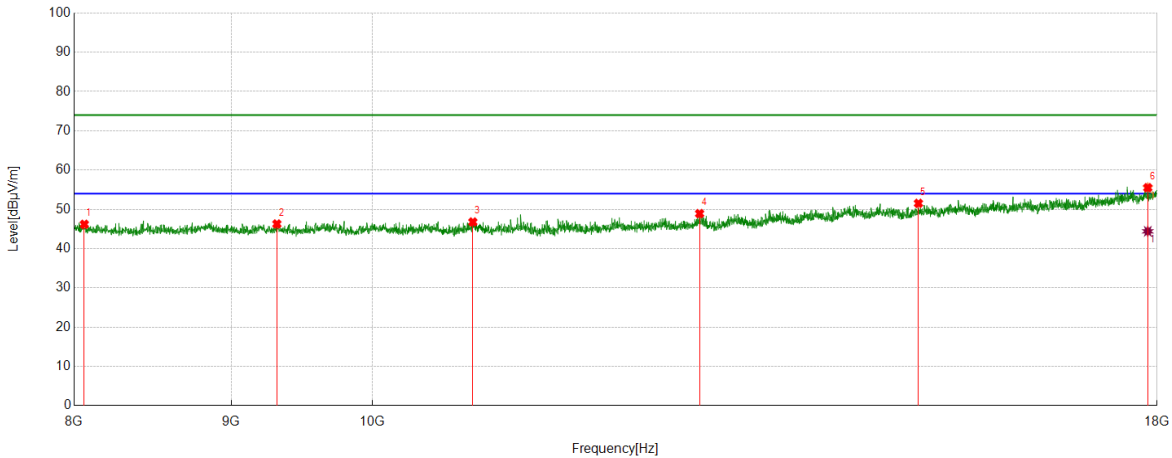
No.	Frequency	Reading Level	Correct Factor	Result	Limit	Margin	Remark
	[MHz]	[dBuV]	[dB/m]	[dBuV/m]	[dBuV/m]	[dB]	
1	9451.9087	43.72	3.53	47.25	74.00	26.75	peak
2	10693.7823	41.47	4.51	45.98	74.00	28.02	peak
3	11658.9432	40.43	6.12	46.55	74.00	27.45	peak
4	13635.9393	39.64	9.59	49.23	74.00	24.77	peak
5	15734.6224	38.99	12.80	51.79	74.00	22.21	peak
6	17998.3331	36.83	18.66	55.49	74.00	18.51	peak

**AV Result:**

No.	Frequency	Reading Level	Correct Factor	Result	Limit	Margin	Remark
	[MHz]	[dBuV]	[dB/m]	[dBuV/m]	[dBuV/m]	[dB]	
1	17998.3331	26.56	18.66	45.22	54.00	8.78	AV

- Remark:
1. Measurement = Reading Level + Correct Factor.
  2. If Peak Result complies with AV limit, AV Result is deemed to comply with AV limit.
  3. Test setup: RBW: 1 MHz, VBW: 3 MHz, Sweep time: auto.
  4. Peak: Peak detector.
  5. AVG: VBW refer to section 6.1.
  6. For above 6.5GHz part, filter losses were only considered in the spurious frequency bands and the authorized band were not corrected for HPF losses. The proper operation of the transmitter prior to adding the filter to the measurement chain.
  7. Only the worst case emission was recorded, if it complies with the limit, the other emissions deemed to comply with the limit.
  8. Since non-restricted band peak emissions are less than the average limit, they also comply with the -27dBm/MHz (68.2dBuV/m) limit.

Test Mode	Channel	Polarization	Verdict
11AC20	5500	Horizontal	PASS



**PK Result:**

No.	Frequency	Reading Level	Correct Factor	Result	Limit	Margin	Remark
	[MHz]	[dBuV]	[dB/m]	[dBuV/m]	[dBuV/m]	[dB]	
1	8061.6769	42.49	3.69	46.18	74.00	27.82	peak
2	9311.8853	43.00	3.27	46.27	74.00	27.73	peak
3	10783.7973	42.04	4.73	46.77	74.00	27.23	peak
4	12779.1299	41.25	7.66	48.91	74.00	25.09	peak
5	15054.5091	39.35	12.17	51.52	74.00	22.48	peak
6	17874.9792	36.81	18.70	55.51	74.00	18.49	peak

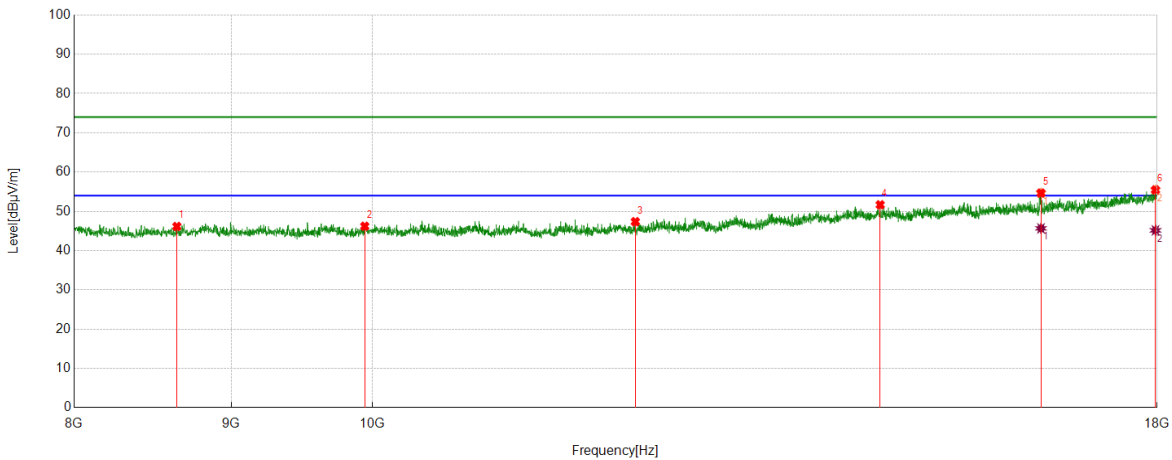
**AV Result:**

No.	Frequency	Reading Level	Correct Factor	Result	Limit	Margin	Remark
	[MHz]	[dBuV]	[dB/m]	[dBuV/m]	[dBuV/m]	[dB]	
1	17874.9792	25.70	18.70	44.40	54.00	9.60	AV

- Remark: 1. Measurement = Reading Level + Correct Factor.  
 2. If Peak Result complies with AV limit, AV Result is deemed to comply with AV limit.  
 3. Test setup: RBW: 1 MHz, VBW: 3 MHz, Sweep time: auto.  
 4. Peak: Peak detector.  
 5. AVG: VBW refer to section 6.1.  
 6. For above 6.5GHz part, filter losses were only considered in the spurious frequency bands and the authorized band were not corrected for HPF losses. The proper operation of the transmitter prior to adding the filter to the measurement chain.  
 7. Only the worst case emission was recorded, if it complies with the limit, the other emissions deemed to comply with the limit.  
 8. Since non-restricted band peak emissions are less than the average limit, they also comply with the -27dBm/MHz (68.2dBuV/m) limit.



Test Mode	Channel	Polarization	Verdict
11AC20	5500	Vertical	PASS



**PK Result:**

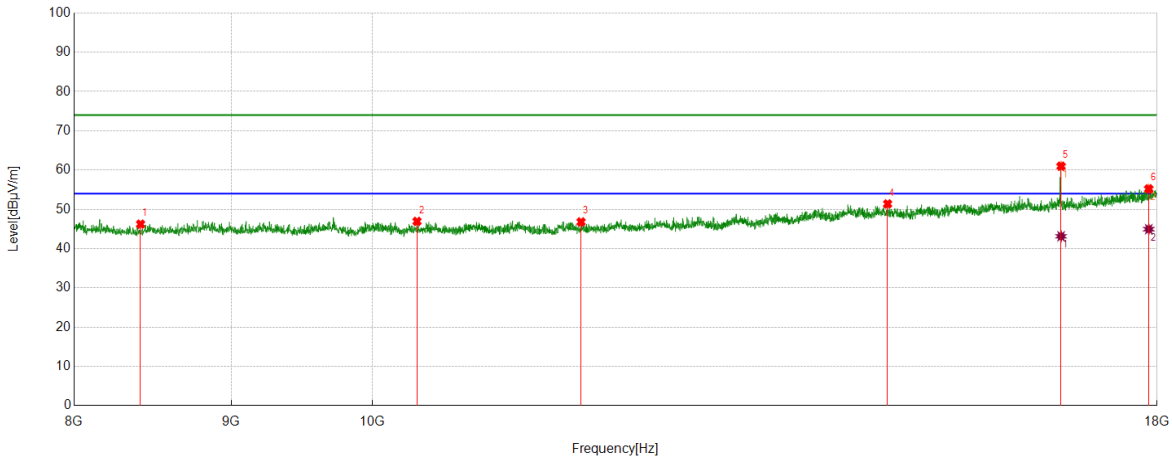
No.	Frequency	Reading Level	Correct Factor	Result	Limit	Margin	Remark
	[MHz]	[dBuV]	[dB/m]	[dBuV/m]	[dBuV/m]	[dB]	
1	8640.1067	42.77	3.38	46.15	74.00	27.85	peak
2	9945.3242	41.99	4.21	46.20	74.00	27.80	peak
3	12179.0298	40.40	6.96	47.36	74.00	26.64	peak
4	14629.4382	39.85	11.81	51.66	74.00	22.34	peak
5	16501.4169	40.63	14.02	54.65	74.00	19.35	peak
6	17978.3297	36.81	18.64	55.45	74.00	18.55	peak

**AV Result:**

No.	Frequency	Reading Level	Correct Factor	Result	Limit	Margin	Remark
	[MHz]	[dBuV]	[dB/m]	[dBuV/m]	[dBuV/m]	[dB]	
1	16501.4169	31.64	14.02	45.66	54.00	8.34	AV
2	17978.3297	26.51	18.64	45.15	54.00	8.85	AV

- Remark: 1. Measurement = Reading Level + Correct Factor.  
 2. If Peak Result complies with AV limit, AV Result is deemed to comply with AV limit.  
 3. Test setup: RBW: 1 MHz, VBW: 3 MHz, Sweep time: auto.  
 4. Peak: Peak detector.  
 5. AVG: VBW refer to section 6.1.  
 6. For above 6.5GHz part, filter losses were only considered in the spurious frequency bands and the authorized band were not corrected for HPF losses. The proper operation of the transmitter prior to adding the filter to the measurement chain.  
 7. Only the worst case emission was recorded, if it complies with the limit, the other emissions deemed to comply with the limit.  
 8. Since non-restricted band peak emissions are less than the average limit, they also comply with the -27dBm/MHz (68.2dBuV/m) limit.

Test Mode	Channel	Polarization	Verdict
11AC20	5580	Horizontal	PASS



**PK Result:**

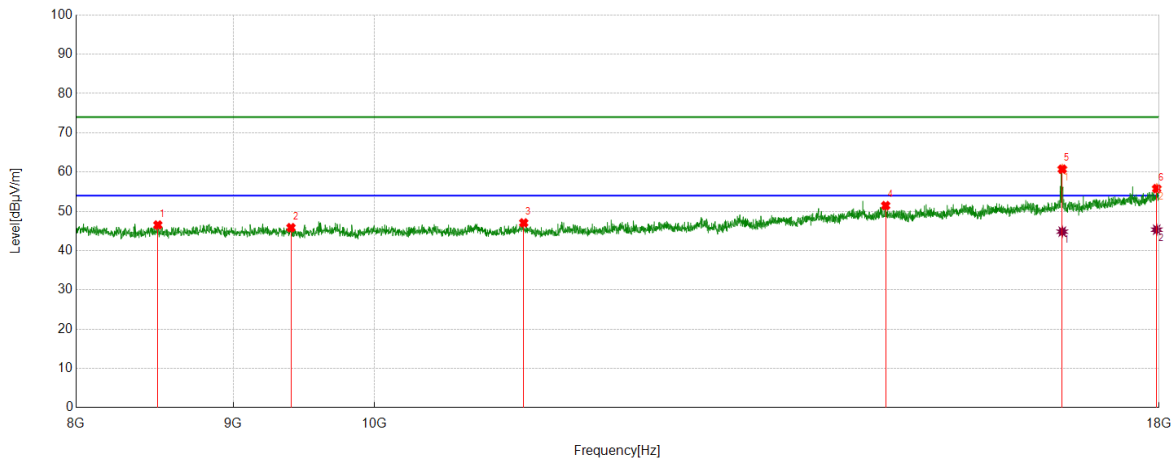
No.	Frequency	Reading Level	Correct Factor	Result	Limit	Margin	Remark
	[MHz]	[dBuV]	[dB/m]	[dBuV/m]	[dBuV/m]	[dB]	
1	8408.4014	43.41	2.82	46.23	74.00	27.77	peak
2	10342.057	42.64	4.29	46.93	74.00	27.07	peak
3	11693.949	40.61	6.18	46.79	74.00	27.21	peak
4	14711.1185	39.29	12.09	51.38	74.00	22.62	peak
5	16751.4586	45.99	15.00	60.99	74.00	13.01	peak
6	17888.3147	36.25	18.96	55.21	74.00	18.79	peak

**AV Result:**

No.	Frequency	Reading Level	Correct Factor	Result	Limit	Margin	Remark
	[MHz]	[dBuV]	[dB/m]	[dBuV/m]	[dBuV/m]	[dB]	
1	16751.4586	28.13	15.00	43.13	54.00	10.87	AV
2	17888.3147	25.99	18.96	44.95	54.00	9.05	AV

- Remark: 1. Measurement = Reading Level + Correct Factor.  
 2. If Peak Result complies with AV limit, AV Result is deemed to comply with AV limit.  
 3. Test setup: RBW: 1 MHz, VBW: 3 MHz, Sweep time: auto.  
 4. Peak: Peak detector.  
 5. AVG: VBW refer to section 6.1.  
 6. For above 6.5GHz part, filter losses were only considered in the spurious frequency bands and the authorized band were not corrected for HPF losses. The proper operation of the transmitter prior to adding the filter to the measurement chain.  
 7. Only the worst case emission was recorded, if it complies with the limit, the other emissions deemed to comply with the limit.  
 8. Since non-restricted band peak emissions are less than the average limit, they also comply with the -27dBm/MHz (68.2dBuV/m) limit.

Test Mode	Channel	Polarization	Verdict
11AC20	5580	Vertical	PASS



**PK Result:**

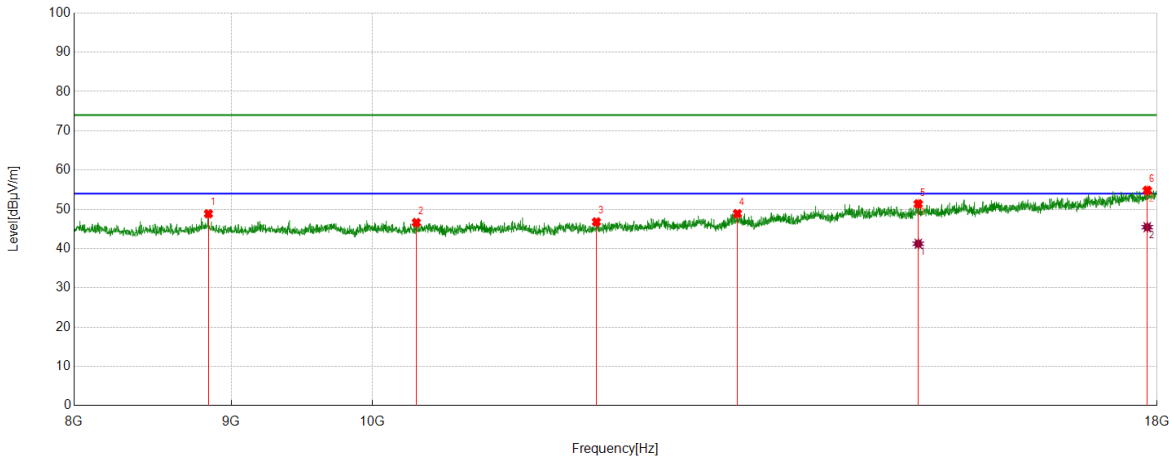
No.	Frequency	Reading Level	Correct Factor	Result	Limit	Margin	Remark
	[MHz]	[dBuV]	[dB/m]	[dBuV/m]	[dBuV/m]	[dB]	
1	8505.0842	43.64	2.88	46.52	74.00	27.48	peak
2	9396.8995	42.07	3.77	45.84	74.00	28.16	peak
3	11185.5309	41.65	5.41	47.06	74.00	26.94	peak
4	14667.778	39.77	11.68	51.45	74.00	22.55	peak
5	16741.4569	45.62	15.12	60.74	74.00	13.26	peak
6	17968.3281	37.15	18.64	55.79	74.00	18.21	peak

**AV Result:**

No.	Frequency	Reading Level	Correct Factor	Result	Limit	Margin	Remark
	[MHz]	[dBuV]	[dB/m]	[dBuV/m]	[dBuV/m]	[dB]	
1	16741.4569	29.71	15.12	44.83	54.00	9.17	AV
2	17968.3281	26.68	18.64	45.32	54.00	8.68	AV

- Remark:
1. Measurement = Reading Level + Correct Factor.
  2. If Peak Result complies with AV limit, AV Result is deemed to comply with AV limit.
  3. Test setup: RBW: 1 MHz, VBW: 3 MHz, Sweep time: auto.
  4. Peak: Peak detector.
  5. AVG: VBW refer to section 6.1.
  6. For above 6.5GHz part, filter losses were only considered in the spurious frequency bands and the authorized band were not corrected for HPF losses. The proper operation of the transmitter prior to adding the filter to the measurement chain.
  7. Only the worst case emission was recorded, if it complies with the limit, the other emissions deemed to comply with the limit.
  8. Since non-restricted band peak emissions are less than the average limit, they also comply with the -27dBm/MHz (68.2dBuV/m) limit.

Test Mode	Channel	Polarization	Verdict
11AC20	5700	Horizontal	PASS



**PK Result:**

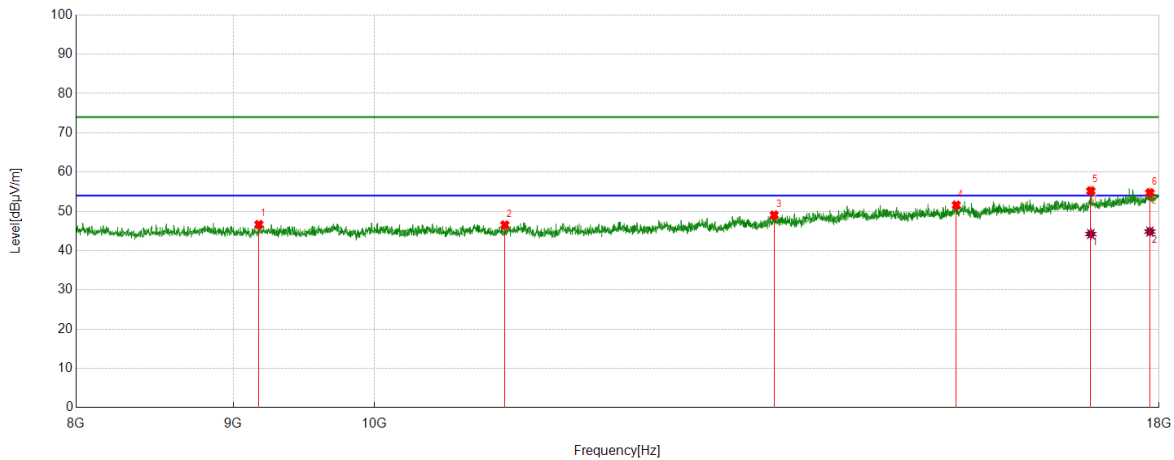
No.	Frequency	Reading Level	Correct Factor	Result	Limit	Margin	Remark
	[MHz]	[dBuV]	[dB/m]	[dBuV/m]	[dBuV/m]	[dB]	
1	8846.8078	45.10	3.77	48.87	74.00	25.13	peak
2	10337.0562	42.27	4.36	46.63	74.00	27.37	peak
3	11828.9715	40.49	6.31	46.80	74.00	27.20	peak
4	13145.8576	40.55	8.36	48.91	74.00	25.09	peak
5	15052.8421	39.25	12.14	51.39	74.00	22.61	peak
6	17868.3114	36.15	18.67	54.82	74.00	19.18	peak

**AV Result:**

No.	Frequency	Reading Level	Correct Factor	Result	Limit	Margin	Remark
	[MHz]	[dBuV]	[dB/m]	[dBuV/m]	[dBuV/m]	[dB]	
1	15052.8421	29.10	12.14	41.24	54.00	12.76	AV
2	17868.3114	26.79	18.67	45.46	54.00	8.54	AV

- Remark: 1. Measurement = Reading Level + Correct Factor.  
 2. If Peak Result complies with AV limit, AV Result is deemed to comply with AV limit.  
 3. Test setup: RBW: 1 MHz, VBW: 3 MHz, Sweep time: auto.  
 4. Peak: Peak detector.  
 5. AVG: VBW refer to section 6.1.  
 6. For above 6.5GHz part, filter losses were only considered in the spurious frequency bands and the authorized band were not corrected for HPF losses. The proper operation of the transmitter prior to adding the filter to the measurement chain.  
 7. Only the worst case emission was recorded, if it complies with the limit, the other emissions deemed to comply with the limit.  
 8. Since non-restricted band peak emissions are less than the average limit, they also comply with the -27dBm/MHz (68.2dBuV/m) limit.

Test Mode	Channel	Polarization	Verdict
11AC20	5700	Vertical	PASS



**PK Result:**

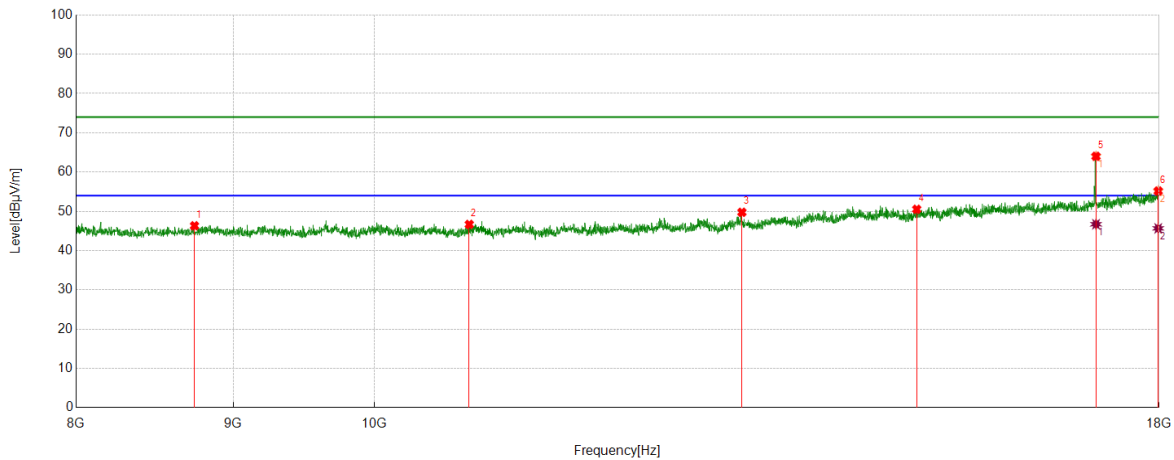
No.	Frequency	Reading Level	Correct Factor	Result	Limit	Margin	Remark
	[MHz]	[dBuV]	[dB/m]	[dBuV/m]	[dBuV/m]	[dB]	
1	9173.5289	43.24	3.40	46.64	74.00	27.36	peak
2	11028.8381	41.45	5.08	46.53	74.00	27.47	peak
3	13492.5821	40.00	9.06	49.06	74.00	24.94	peak
4	15464.5774	38.75	12.83	51.58	74.00	22.42	peak
5	17103.1839	39.89	15.31	55.20	74.00	18.80	peak
6	17876.6461	35.99	18.73	54.72	74.00	19.28	peak

**AV Result:**

No.	Frequency	Reading Level	Correct Factor	Result	Limit	Margin	Remark
	[MHz]	[dBuV]	[dB/m]	[dBuV/m]	[dBuV/m]	[dB]	
1	17103.1839	28.92	15.31	44.23	54.00	9.77	AV
2	17876.6461	26.11	18.73	44.84	54.00	9.16	AV

- Remark: 1. Measurement = Reading Level + Correct Factor.  
 2. If Peak Result complies with AV limit, AV Result is deemed to comply with AV limit.  
 3. Test setup: RBW: 1 MHz, VBW: 3 MHz, Sweep time: auto.  
 4. Peak: Peak detector.  
 5. AVG: VBW refer to section 6.1.  
 6. For above 6.5GHz part, filter losses were only considered in the spurious frequency bands and the authorized band were not corrected for HPF losses. The proper operation of the transmitter prior to adding the filter to the measurement chain.  
 7. Only the worst case emission was recorded, if it complies with the limit, the other emissions deemed to comply with the limit.  
 8. Since non-restricted band peak emissions are less than the average limit, they also comply with the -27dBm/MHz (68.2dBuV/m) limit.

Test Mode	Channel	Polarization	Verdict
11AC20	5720	Horizontal	PASS



**PK Result:**

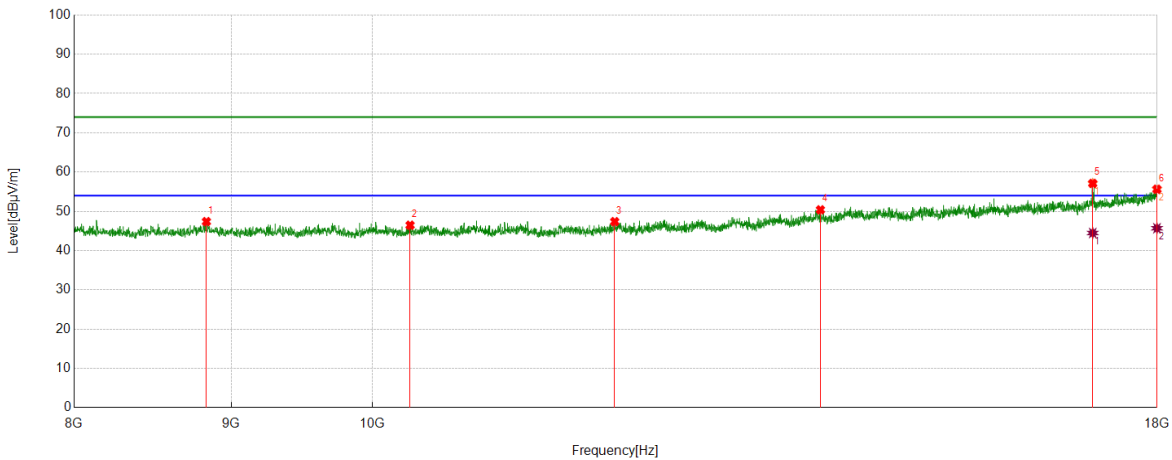
No.	Frequency	Reading Level	Correct Factor	Result	Limit	Margin	Remark
	[MHz]	[dBuV]	[dB/m]	[dBuV/m]	[dBuV/m]	[dB]	
1	8741.7903	42.97	3.35	46.32	74.00	27.68	peak
2	10738.7898	42.10	4.57	46.67	74.00	27.33	peak
3	13170.8618	41.41	8.35	49.76	74.00	24.24	peak
4	15012.8355	38.66	11.86	50.52	74.00	23.48	peak
5	17169.8616	48.36	15.65	64.01	74.00	9.99	peak
6	17988.3314	36.63	18.54	55.17	74.00	18.83	peak

**AV Result:**

No.	Frequency	Reading Level	Correct Factor	Result	Limit	Margin	Remark
	[MHz]	[dBuV]	[dB/m]	[dBuV/m]	[dBuV/m]	[dB]	
1	17169.8616	31.06	15.65	46.71	54.00	7.29	AV
2	17988.3314	27.12	18.54	45.66	54.00	8.34	AV

- Remark: 1. Measurement = Reading Level + Correct Factor.  
 2. If Peak Result complies with AV limit, AV Result is deemed to comply with AV limit.  
 3. Test setup: RBW: 1 MHz, VBW: 3 MHz, Sweep time: auto.  
 4. Peak: Peak detector.  
 5. AVG: VBW refer to section 6.1.  
 6. For above 6.5GHz part, filter losses were only considered in the spurious frequency bands and the authorized band were not corrected for HPF losses. The proper operation of the transmitter prior to adding the filter to the measurement chain.  
 7. Only the worst case emission was recorded, if it complies with the limit, the other emissions deemed to comply with the limit.  
 8. Since non-restricted band peak emissions are less than the average limit, they also comply with the -27dBm/MHz (68.2dBuV/m) limit.

Test Mode	Channel	Polarization	Verdict
11AC20	5720	Vertical	PASS



**PK Result:**

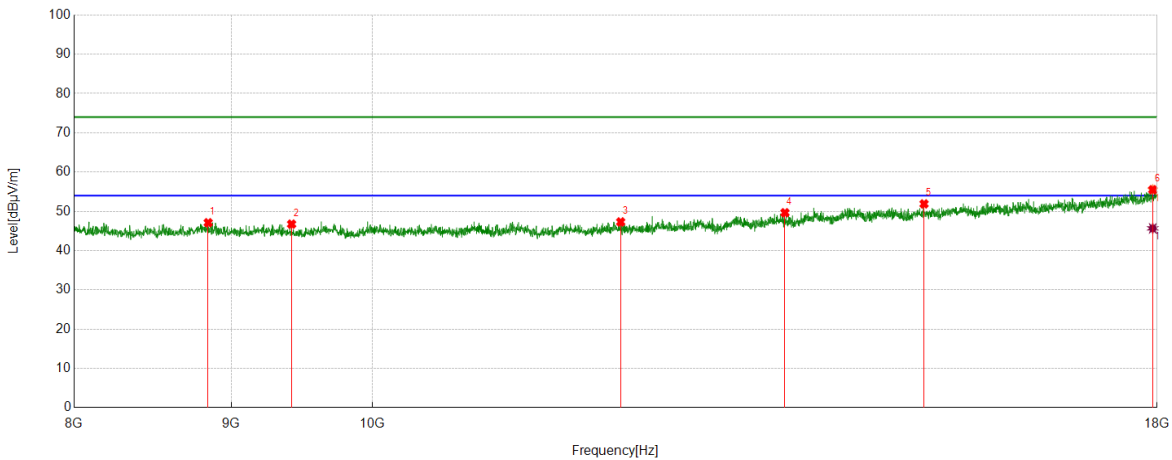
No.	Frequency	Reading Level	Correct Factor	Result	Limit	Margin	Remark
	[MHz]	[dBuV]	[dB/m]	[dBuV/m]	[dBuV/m]	[dB]	
1	8833.4722	43.67	3.71	47.38	74.00	26.62	peak
2	10288.7148	41.76	4.70	46.46	74.00	27.54	peak
3	11992.3321	40.83	6.54	47.37	74.00	26.63	peak
4	13989.3316	39.55	10.84	50.39	74.00	23.61	peak
5	17153.1922	41.37	15.74	57.11	74.00	16.89	peak
6	17998.3331	36.96	18.66	55.62	74.00	18.38	peak

**AV Result:**

No.	Frequency	Reading Level	Correct Factor	Result	Limit	Margin	Remark
	[MHz]	[dBuV]	[dB/m]	[dBuV/m]	[dBuV/m]	[dB]	
1	17153.1922	28.74	15.74	44.48	54.00	9.52	AV
2	17998.3331	27.03	18.66	45.69	54.00	8.31	AV

- Remark: 1. Measurement = Reading Level + Correct Factor.  
 2. If Peak Result complies with AV limit, AV Result is deemed to comply with AV limit.  
 3. Test setup: RBW: 1 MHz, VBW: 3 MHz, Sweep time: auto.  
 4. Peak: Peak detector.  
 5. AVG: VBW refer to section 6.1.  
 6. For above 6.5GHz part, filter losses were only considered in the spurious frequency bands and the authorized band were not corrected for HPF losses. The proper operation of the transmitter prior to adding the filter to the measurement chain.  
 7. Only the worst case emission was recorded, if it complies with the limit, the other emissions deemed to comply with the limit.  
 8. Since non-restricted band peak emissions are less than the average limit, they also comply with the -27dBm/MHz (68.2dBuV/m) limit.

Test Mode	Channel	Polarization	Verdict
11AC20	5745	Horizontal	PASS



**PK Result:**

No.	Frequency	Reading Level	Correct Factor	Result	Limit	Margin	Remark
	[MHz]	[dBuV]	[dB/m]	[dBuV/m]	[dBuV/m]	[dB]	
1	8845.1409	43.37	3.73	47.10	74.00	26.90	peak
2	9415.2359	43.19	3.55	46.74	74.00	27.26	peak
3	12045.6743	40.32	6.98	47.30	74.00	26.70	peak
4	13622.6038	40.37	9.28	49.65	74.00	24.35	peak
5	15117.853	39.99	11.90	51.89	74.00	22.11	peak
6	17941.6569	36.93	18.57	55.50	74.00	18.50	peak

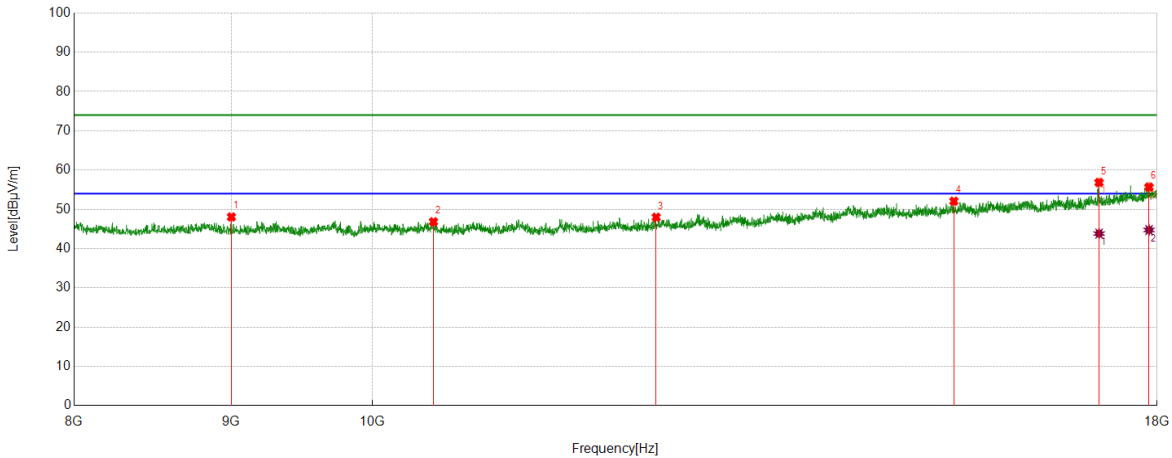
**AV Result:**

No.	Frequency	Reading Level	Correct Factor	Result	Limit	Margin	Remark
	[MHz]	[dBuV]	[dB/m]	[dBuV/m]	[dBuV/m]	[dB]	
1	17941.6569	27.09	18.57	45.66	54.00	8.34	AV

- Remark:
1. Measurement = Reading Level + Correct Factor.
  2. If Peak Result complies with AV limit, AV Result is deemed to comply with AV limit.
  3. Test setup: RBW: 1 MHz, VBW: 3 MHz, Sweep time: auto.
  4. Peak: Peak detector.
  5. AVG: VBW refer to section 6.1.
  6. For above 6.5GHz part, filter losses were only considered in the spurious frequency bands and the authorized band were not corrected for HPF losses. The proper operation of the transmitter prior to adding the filter to the measurement chain.
  7. Only the worst case emission was recorded, if it complies with the limit, the other emissions deemed to comply with the limit.
  8. Since non-restricted band peak emissions are less than the average limit, they also comply with the -27dBm/MHz (68.2dBuV/m) limit.



Test Mode	Channel	Polarization	Verdict
11AC20	5745	Vertical	PASS



**PK Result:**

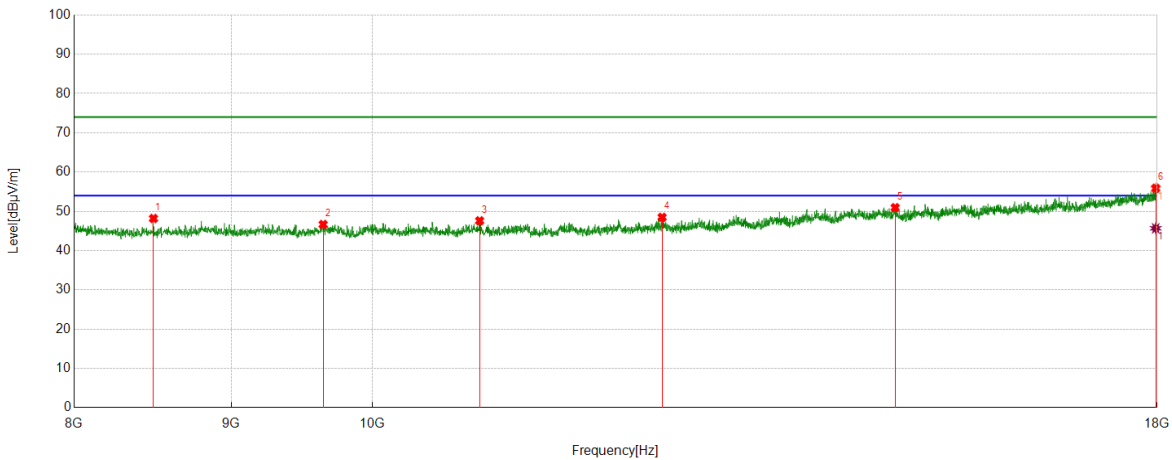
No.	Frequency	Reading Level	Correct Factor	Result	Limit	Margin	Remark
	[MHz]	[dBuV]	[dB/m]	[dBuV/m]	[dBuV/m]	[dB]	
1	9000.1667	44.74	3.31	48.05	74.00	25.95	peak
2	10470.4117	42.36	4.47	46.83	74.00	27.17	peak
3	12370.7285	41.09	6.89	47.98	74.00	26.02	peak
4	15459.5766	38.96	13.11	52.07	74.00	21.93	peak
5	17234.8725	40.72	16.12	56.84	74.00	17.16	peak
6	17891.6486	36.66	19.00	55.66	74.00	18.34	peak

**AV Result:**

No.	Frequency	Reading Level	Correct Factor	Result	Limit	Margin	Remark
	[MHz]	[dBuV]	[dB/m]	[dBuV/m]	[dBuV/m]	[dB]	
1	17234.8725	27.70	16.12	43.82	54.00	10.18	AV
2	17891.6486	25.73	19.00	44.73	54.00	9.27	AV

- Remark:
1. Measurement = Reading Level + Correct Factor.
  2. If Peak Result complies with AV limit, AV Result is deemed to comply with AV limit.
  3. Test setup: RBW: 1 MHz, VBW: 3 MHz, Sweep time: auto.
  4. Peak: Peak detector.
  5. AVG: VBW refer to section 6.1.
  6. For above 6.5GHz part, filter losses were only considered in the spurious frequency bands and the authorized band were not corrected for HPF losses. The proper operation of the transmitter prior to adding the filter to the measurement chain.
  7. Only the worst case emission was recorded, if it complies with the limit, the other emissions deemed to comply with the limit.
  8. Since non-restricted band peak emissions are less than the average limit, they also comply with the -27dBm/MHz (68.2dBuV/m) limit.

Test Mode	Channel	Polarization	Verdict
11AC20	5785	Horizontal	PASS



**PK Result:**

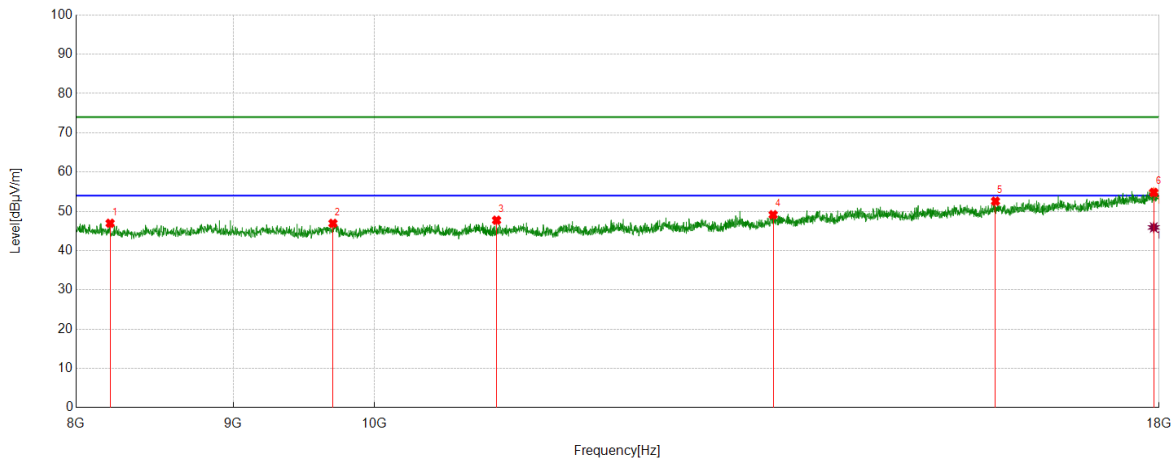
No.	Frequency	Reading Level	Correct Factor	Result	Limit	Margin	Remark
	[MHz]	[dBuV]	[dB/m]	[dBuV/m]	[dBuV/m]	[dB]	
1	8490.0817	45.21	2.97	48.18	74.00	25.82	peak
2	9640.2734	42.91	3.75	46.66	74.00	27.34	peak
3	10838.8065	42.64	4.95	47.59	74.00	26.41	peak
4	12425.7376	41.61	6.86	48.47	74.00	25.53	peak
5	14794.4657	39.52	11.42	50.94	74.00	23.06	peak
6	17981.6636	37.26	18.62	55.88	74.00	18.12	peak

**AV Result:**

No.	Frequency	Reading Level	Correct Factor	Result	Limit	Margin	Remark
	[MHz]	[dBuV]	[dB/m]	[dBuV/m]	[dBuV/m]	[dB]	
1	17981.6636	27.05	18.62	45.67	54.00	8.33	AV

- Remark:
1. Measurement = Reading Level + Correct Factor.
  2. If Peak Result complies with AV limit, AV Result is deemed to comply with AV limit.
  3. Test setup: RBW: 1 MHz, VBW: 3 MHz, Sweep time: auto.
  4. Peak: Peak detector.
  5. AVG: VBW refer to section 6.1.
  6. For above 6.5GHz part, filter losses were only considered in the spurious frequency bands and the authorized band were not corrected for HPF losses. The proper operation of the transmitter prior to adding the filter to the measurement chain.
  7. Only the worst case emission was recorded, if it complies with the limit, the other emissions deemed to comply with the limit.
  8. Since non-restricted band peak emissions are less than the average limit, they also comply with the -27dBm/MHz (68.2dBuV/m) limit.

Test Mode	Channel	Polarization	Verdict
11AC20	5785	Vertical	PASS



**PK Result:**

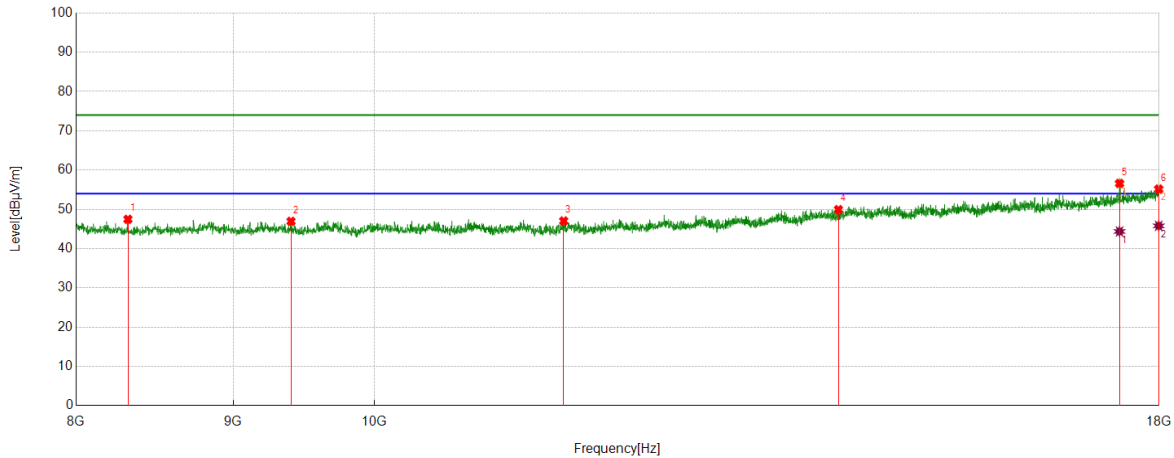
No.	Frequency	Reading Level	Correct Factor	Result	Limit	Margin	Remark
	[MHz]	[dBuV]	[dB/m]	[dBuV/m]	[dBuV/m]	[dB]	
1	8206.7011	43.63	3.32	46.95	74.00	27.05	peak
2	9696.9495	42.83	4.10	46.93	74.00	27.07	peak
3	10960.4934	42.88	4.85	47.73	74.00	26.27	peak
4	13482.5804	40.03	9.10	49.13	74.00	24.87	peak
5	15924.6541	39.39	13.18	52.57	74.00	21.43	peak
6	17928.3214	36.21	18.61	54.82	74.00	19.18	peak

**AV Result:**

No.	Frequency	Reading Level	Correct Factor	Result	Limit	Margin	Remark
	[MHz]	[dBuV]	[dB/m]	[dBuV/m]	[dBuV/m]	[dB]	
1	17928.3214	27.29	18.61	45.90	54.00	8.10	AV

- Remark: 1. Measurement = Reading Level + Correct Factor.  
 2. If Peak Result complies with AV limit, AV Result is deemed to comply with AV limit.  
 3. Test setup: RBW: 1 MHz, VBW: 3 MHz, Sweep time: auto.  
 4. Peak: Peak detector.  
 5. AVG: VBW refer to section 6.1.  
 6. For above 6.5GHz part, filter losses were only considered in the spurious frequency bands and the authorized band were not corrected for HPF losses. The proper operation of the transmitter prior to adding the filter to the measurement chain.  
 7. Only the worst case emission was recorded, if it complies with the limit, the other emissions deemed to comply with the limit.  
 8. Since non-restricted band peak emissions are less than the average limit, they also comply with the -27dBm/MHz (68.2dBuV/m) limit.

Test Mode	Channel	Polarization	Verdict
11AC20	5825	Horizontal	PASS



PK Result:

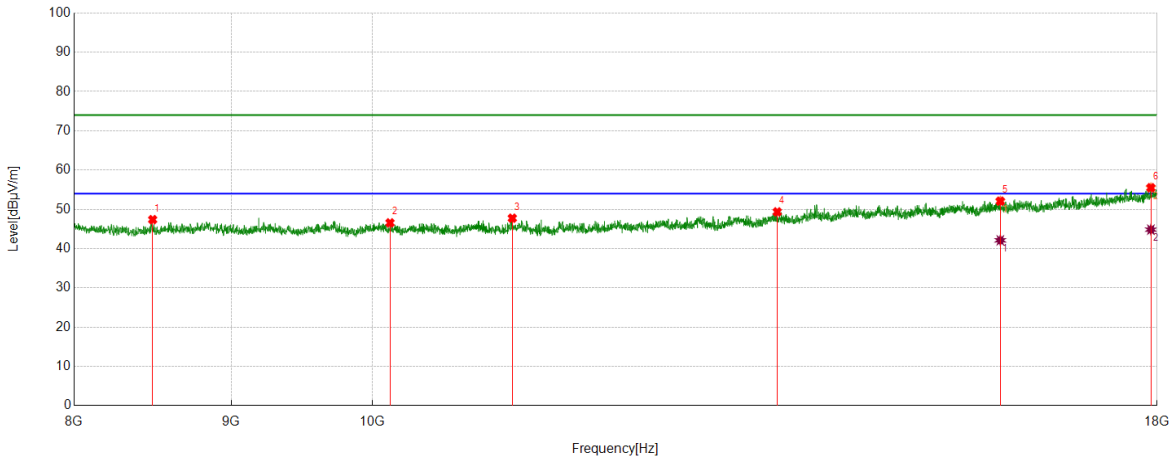
No.	Frequency	Reading Level	Correct Factor	Result	Limit	Margin	Remark
	[MHz]	[dBuV]	[dB/m]	[dBuV/m]	[dBuV/m]	[dB]	
1	8316.7195	44.59	2.87	47.46	74.00	26.54	peak
2	9396.8995	43.17	3.77	46.94	74.00	27.06	peak
3	11525.5876	40.78	6.25	47.03	74.00	26.97	peak
4	14157.6929	38.88	11.05	49.93	74.00	24.07	peak
5	17474.9125	39.07	17.53	56.60	74.00	17.40	peak
6	17994.9992	36.56	18.60	55.16	74.00	18.84	peak

AV Result:

No.	Frequency	Reading Level	Correct Factor	Result	Limit	Margin	Remark
	[MHz]	[dBuV]	[dB/m]	[dBuV/m]	[dBuV/m]	[dB]	
1	17474.9125	26.83	17.53	44.36	54.00	9.64	AV
2	17994.9992	27.19	18.60	45.79	54.00	8.21	AV

- Remark: 1. Measurement = Reading Level + Correct Factor.  
 2. If Peak Result complies with AV limit, AV Result is deemed to comply with AV limit.  
 3. Test setup: RBW: 1 MHz, VBW: 3 MHz, Sweep time: auto.  
 4. Peak: Peak detector.  
 5. AVG: VBW refer to section 6.1.  
 6. For above 6.5GHz part, filter losses were only considered in the spurious frequency bands and the authorized band were not corrected for HPF losses. The proper operation of the transmitter prior to adding the filter to the measurement chain.  
 7. Only the worst case emission was recorded, if it complies with the limit, the other emissions deemed to comply with the limit.  
 8. Since non-restricted band peak emissions are less than the average limit, they also comply with the -27dBm/MHz (68.2dBuV/m) limit.

Test Mode	Channel	Polarization	Verdict
11AC20	5825	Vertical	PASS



**PK Result:**

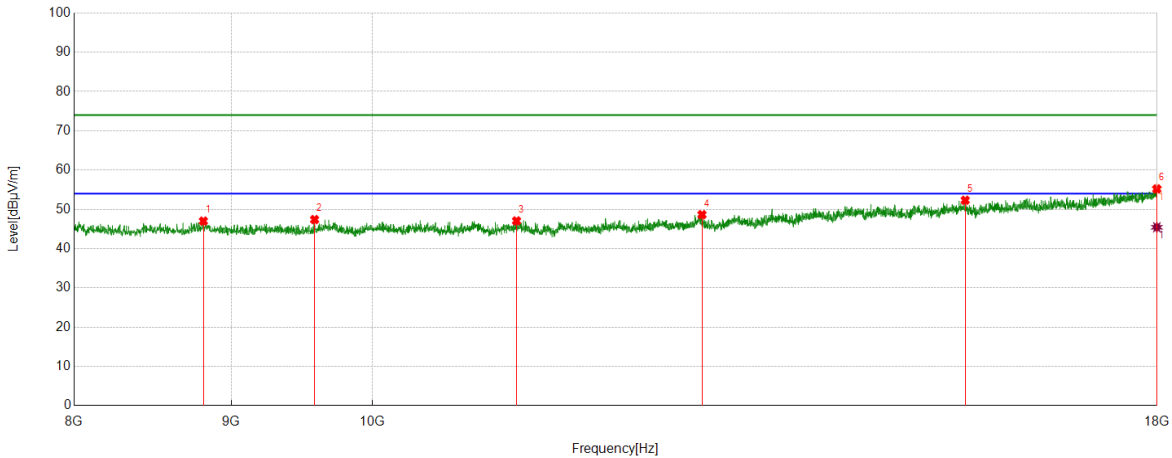
No.	Frequency	Reading Level	Correct Factor	Result	Limit	Margin	Remark
	[MHz]	[dBuV]	[dB/m]	[dBuV/m]	[dBuV/m]	[dB]	
1	8485.0808	44.34	3.04	47.38	74.00	26.62	peak
2	10135.3559	42.24	4.32	46.56	74.00	27.44	peak
3	11107.1845	42.36	5.38	47.74	74.00	26.26	peak
4	13544.2574	40.22	9.13	49.35	74.00	24.65	peak
5	16006.3344	38.39	13.70	52.09	74.00	21.91	peak
6	17916.6528	36.88	18.62	55.50	74.00	18.50	peak

**AV Result:**

No.	Frequency	Reading Level	Correct Factor	Result	Limit	Margin	Remark
	[MHz]	[dBuV]	[dB/m]	[dBuV/m]	[dBuV/m]	[dB]	
1	16006.3344	28.41	13.70	42.11	54.00	11.89	AV
2	17916.6528	26.21	18.62	44.83	54.00	9.17	AV

- Remark:
1. Measurement = Reading Level + Correct Factor.
  2. If Peak Result complies with AV limit, AV Result is deemed to comply with AV limit.
  3. Test setup: RBW: 1 MHz, VBW: 3 MHz, Sweep time: auto.
  4. Peak: Peak detector.
  5. AVG: VBW refer to section 6.1.
  6. For above 6.5GHz part, filter losses were only considered in the spurious frequency bands and the authorized band were not corrected for HPF losses. The proper operation of the transmitter prior to adding the filter to the measurement chain.
  7. Only the worst case emission was recorded, if it complies with the limit, the other emissions deemed to comply with the limit.
  8. Since non-restricted band peak emissions are less than the average limit, they also comply with the -27dBm/MHz (68.2dBuV/m) limit.

Test Mode	Channel	Polarization	Verdict
11AC40	5190	Horizontal	PASS



**PK Result:**

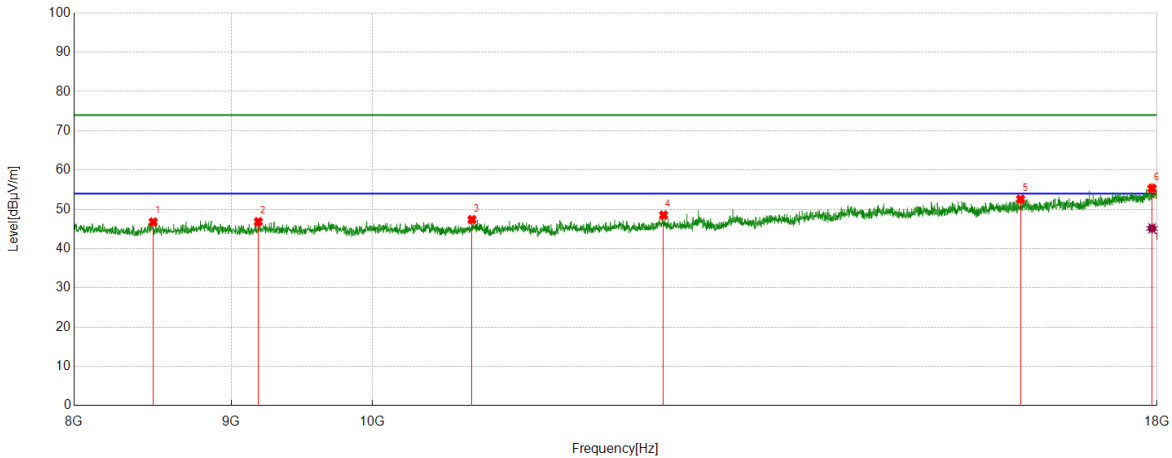
No.	Frequency	Reading Level	Correct Factor	Result	Limit	Margin	Remark
	[MHz]	[dBuV]	[dB/m]	[dBuV/m]	[dBuV/m]	[dB]	
1	8813.4689	43.16	3.85	47.01	74.00	26.99	peak
2	9578.5964	43.78	3.61	47.39	74.00	26.61	peak
3	11142.1904	42.03	5.03	47.06	74.00	26.94	peak
4	12802.4671	41.35	7.29	48.64	74.00	25.36	peak
5	15591.2652	39.31	13.00	52.31	74.00	21.69	peak
6	17996.6661	36.56	18.64	55.20	74.00	18.80	peak

**AV Result:**

No.	Frequency	Reading Level	Correct Factor	Result	Limit	Margin	Remark
	[MHz]	[dBuV]	[dB/m]	[dBuV/m]	[dBuV/m]	[dB]	
1	17996.6661	26.79	18.64	45.43	54.00	8.57	AV

- Remark:
1. Measurement = Reading Level + Correct Factor.
  2. If Peak Result complies with AV limit, AV Result is deemed to comply with AV limit.
  3. Test setup: RBW: 1 MHz, VBW: 3 MHz, Sweep time: auto.
  4. Peak: Peak detector.
  5. AVG: VBW refer to section 6.1.
  6. For above 6.5GHz part, filter losses were only considered in the spurious frequency bands and the authorized band were not corrected for HPF losses. The proper operation of the transmitter prior to adding the filter to the measurement chain.
  7. Only the worst case emission was recorded, if it complies with the limit, the other emissions deemed to comply with the limit.
  8. Since non-restricted band peak emissions are less than the average limit, they also comply with the -27dBm/MHz (68.2dBuV/m) limit.

Test Mode	Channel	Polarization	Verdict
11AC40	5190	Vertical	PASS



**PK Result:**

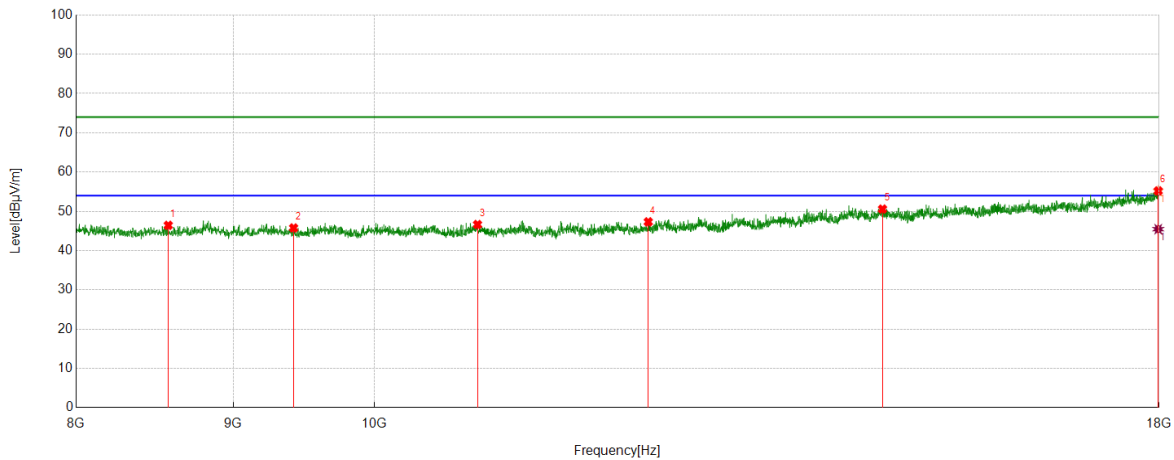
No.	Frequency	Reading Level	Correct Factor	Result	Limit	Margin	Remark
	[MHz]	[dBuV]	[dB/m]	[dBuV/m]	[dBuV/m]	[dB]	
1	8488.4147	43.78	3.00	46.78	74.00	27.22	peak
2	9183.5306	43.25	3.60	46.85	74.00	27.15	peak
3	10777.1295	42.77	4.61	47.38	74.00	26.62	peak
4	12439.0732	41.46	7.08	48.54	74.00	25.46	peak
5	16251.3752	38.39	14.19	52.58	74.00	21.42	peak
6	17931.6553	36.74	18.63	55.37	74.00	18.63	peak

**AV Result:**

No.	Frequency	Reading Level	Correct Factor	Result	Limit	Margin	Remark
	[MHz]	[dBuV]	[dB/m]	[dBuV/m]	[dBuV/m]	[dB]	
1	17931.6553	26.53	18.63	45.16	54.00	8.84	AV

- Remark:
1. Measurement = Reading Level + Correct Factor.
  2. If Peak Result complies with AV limit, AV Result is deemed to comply with AV limit.
  3. Test setup: RBW: 1 MHz, VBW: 3 MHz, Sweep time: auto.
  4. Peak: Peak detector.
  5. AVG: VBW refer to section 6.1.
  6. For above 6.5GHz part, filter losses were only considered in the spurious frequency bands and the authorized band were not corrected for HPF losses. The proper operation of the transmitter prior to adding the filter to the measurement chain.
  7. Only the worst case emission was recorded, if it complies with the limit, the other emissions deemed to comply with the limit.
  8. Since non-restricted band peak emissions are less than the average limit, they also comply with the -27dBm/MHz (68.2dBuV/m) limit.

Test Mode	Channel	Polarization	Verdict
11AC40	5230	Horizontal	PASS



PK Result:

No.	Frequency	Reading Level	Correct Factor	Result	Limit	Margin	Remark
	[MHz]	[dBuV]	[dB/m]	[dBuV/m]	[dBuV/m]	[dB]	
1	8571.762	43.40	3.03	46.43	74.00	27.57	peak
2	9415.2359	42.21	3.55	45.76	74.00	28.24	peak
3	10805.4676	41.85	4.78	46.63	74.00	27.37	peak
4	12279.0465	40.48	6.84	47.32	74.00	26.68	peak
5	14632.7721	38.83	11.74	50.57	74.00	23.43	peak
6	17988.3314	36.66	18.54	55.20	74.00	18.80	peak

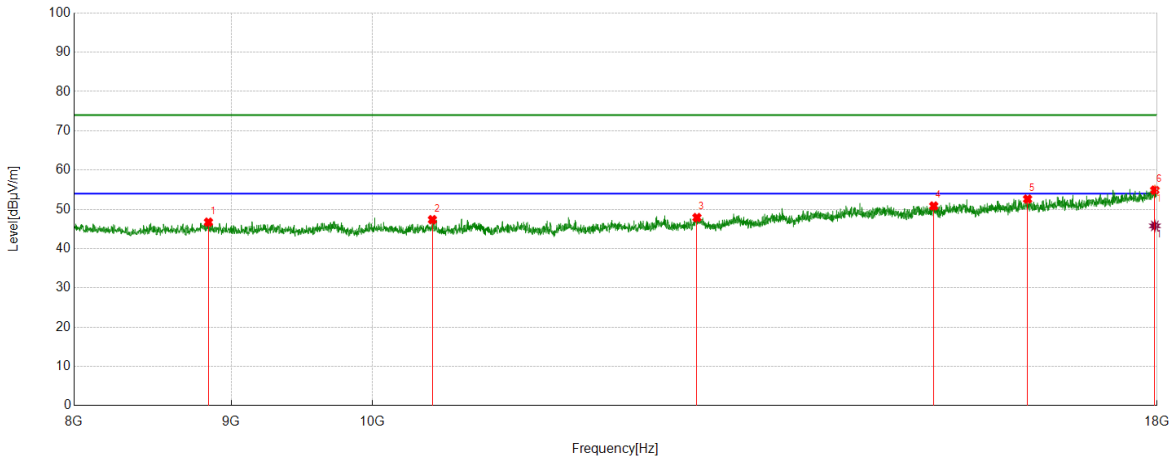
AV Result:

No.	Frequency	Reading Level	Correct Factor	Result	Limit	Margin	Remark
	[MHz]	[dBuV]	[dB/m]	[dBuV/m]	[dBuV/m]	[dB]	
1	17988.3314	26.92	18.54	45.46	54.00	8.54	AV

- Remark: 1. Measurement = Reading Level + Correct Factor.  
 2. If Peak Result complies with AV limit, AV Result is deemed to comply with AV limit.  
 3. Test setup: RBW: 1 MHz, VBW: 3 MHz, Sweep time: auto.  
 4. Peak: Peak detector.  
 5. AVG: VBW refer to section 6.1.  
 6. For above 6.5GHz part, filter losses were only considered in the spurious frequency bands and the authorized band were not corrected for HPF losses. The proper operation of the transmitter prior to adding the filter to the measurement chain.  
 7. Only the worst case emission was recorded, if it complies with the limit, the other emissions deemed to comply with the limit.  
 8. Since non-restricted band peak emissions are less than the average limit, they also comply with the -27dBm/MHz (68.2dBuV/m) limit.



Test Mode	Channel	Polarization	Verdict
11AC40	5230	Vertical	PASS



**PK Result:**

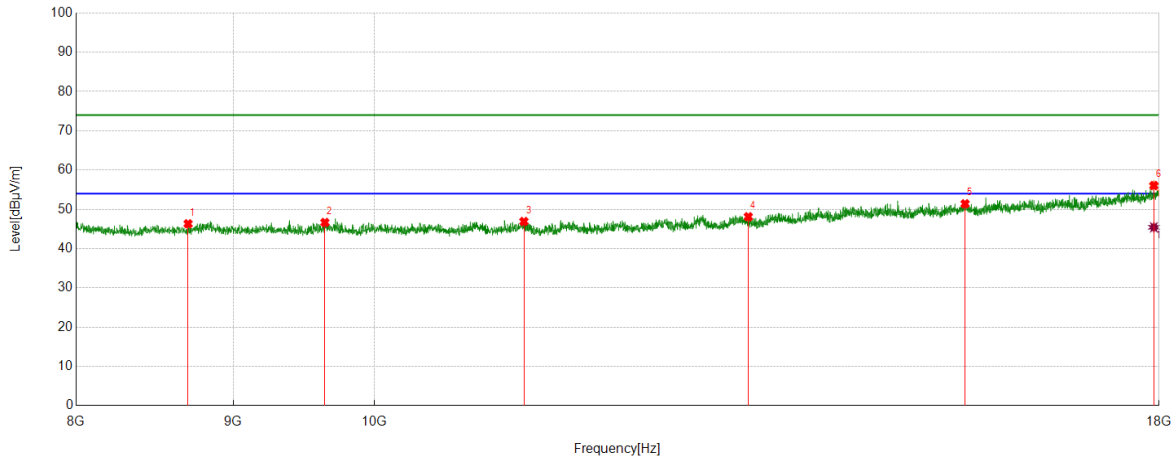
No.	Frequency	Reading Level	Correct Factor	Result	Limit	Margin	Remark
	[MHz]	[dBuV]	[dB/m]	[dBuV/m]	[dBuV/m]	[dB]	
1	8846.8078	42.96	3.77	46.73	74.00	27.27	peak
2	10462.077	42.82	4.54	47.36	74.00	26.64	peak
3	12754.1257	40.43	7.47	47.90	74.00	26.10	peak
4	15227.8713	38.37	12.48	50.85	74.00	23.15	peak
5	16336.3894	38.65	13.96	52.61	74.00	21.39	peak
6	17969.995	36.21	18.69	54.90	74.00	19.10	peak

**AV Result:**

No.	Frequency	Reading Level	Correct Factor	Result	Limit	Margin	Remark
	[MHz]	[dBuV]	[dB/m]	[dBuV/m]	[dBuV/m]	[dB]	
1	17969.995	27.10	18.69	45.79	54.00	8.21	AV

- Remark:
1. Measurement = Reading Level + Correct Factor.
  2. If Peak Result complies with AV limit, AV Result is deemed to comply with AV limit.
  3. Test setup: RBW: 1 MHz, VBW: 3 MHz, Sweep time: auto.
  4. Peak: Peak detector.
  5. AVG: VBW refer to section 6.1.
  6. For above 6.5GHz part, filter losses were only considered in the spurious frequency bands and the authorized band were not corrected for HPF losses. The proper operation of the transmitter prior to adding the filter to the measurement chain.
  7. Only the worst case emission was recorded, if it complies with the limit, the other emissions deemed to comply with the limit.
  8. Since non-restricted band peak emissions are less than the average limit, they also comply with the -27dBm/MHz (68.2dBuV/m) limit.

Test Mode	Channel	Polarization	Verdict
11AC40	5270	Horizontal	PASS



PK Result:

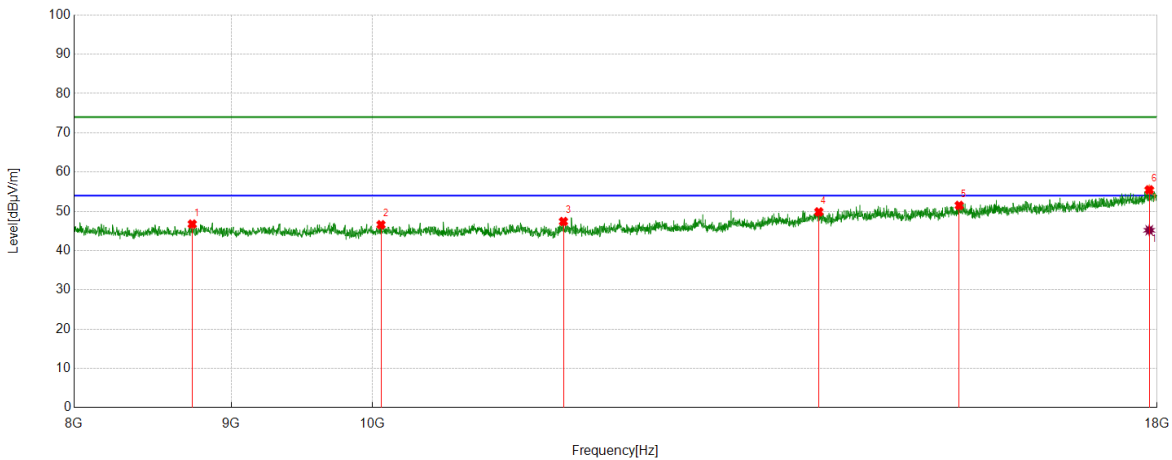
No.	Frequency	Reading Level	Correct Factor	Result	Limit	Margin	Remark
	[MHz]	[dBuV]	[dB/m]	[dBuV/m]	[dBuV/m]	[dB]	
1	8700.1167	43.26	3.06	46.32	74.00	27.68	peak
2	9638.6064	42.91	3.74	46.65	74.00	27.35	peak
3	11187.1979	41.50	5.40	46.90	74.00	27.10	peak
4	13234.2057	39.56	8.55	48.11	74.00	25.89	peak
5	15566.261	38.65	12.76	51.41	74.00	22.59	peak
6	17929.9883	37.43	18.63	56.06	74.00	17.94	peak

AV Result:

No.	Frequency	Reading Level	Correct Factor	Result	Limit	Margin	Remark
	[MHz]	[dBuV]	[dB/m]	[dBuV/m]	[dBuV/m]	[dB]	
1	17929.9883	26.79	18.63	45.42	54.00	8.58	AV

- Remark: 1. Measurement = Reading Level + Correct Factor.  
 2. If Peak Result complies with AV limit, AV Result is deemed to comply with AV limit.  
 3. Test setup: RBW: 1 MHz, VBW: 3 MHz, Sweep time: auto.  
 4. Peak: Peak detector.  
 5. AVG: VBW refer to section 6.1.  
 6. For above 6.5GHz part, filter losses were only considered in the spurious frequency bands and the authorized band were not corrected for HPF losses. The proper operation of the transmitter prior to adding the filter to the measurement chain.  
 7. Only the worst case emission was recorded, if it complies with the limit, the other emissions deemed to comply with the limit.  
 8. Since non-restricted band peak emissions are less than the average limit, they also comply with the -27dBm/MHz (68.2dBuV/m) limit.

Test Mode	Channel	Polarization	Verdict
11AC40	5270	Vertical	PASS



**PK Result:**

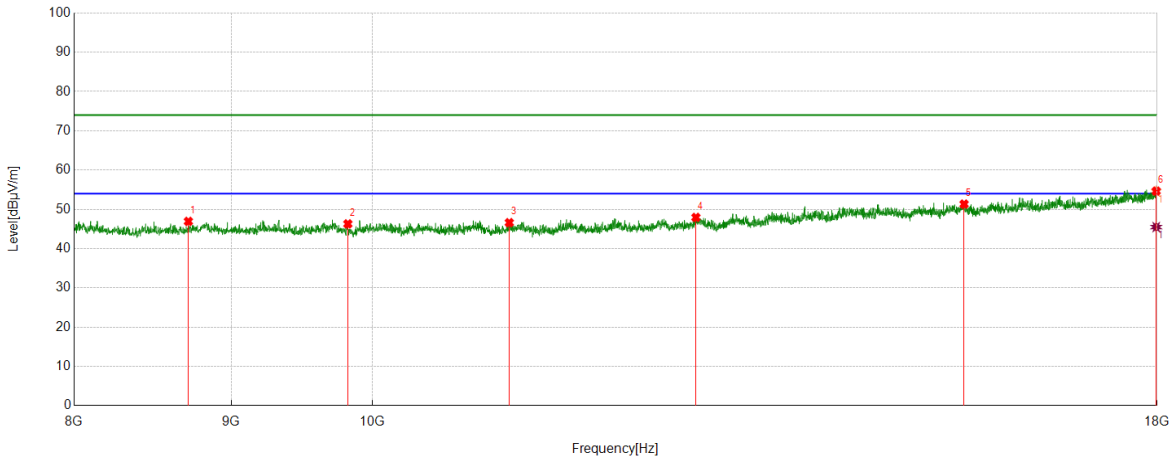
No.	Frequency	Reading Level	Correct Factor	Result	Limit	Margin	Remark
	[MHz]	[dBuV]	[dB/m]	[dBuV/m]	[dBuV/m]	[dB]	
1	8740.1234	43.37	3.38	46.75	74.00	27.25	peak
2	10067.0112	42.21	4.38	46.59	74.00	27.41	peak
3	11540.5901	41.35	6.05	47.40	74.00	26.60	peak
4	13972.6621	39.12	10.74	49.86	74.00	24.14	peak
5	15521.2535	38.62	12.88	51.50	74.00	22.50	peak
6	17894.9825	36.44	19.02	55.46	74.00	18.54	peak

**AV Result:**

No.	Frequency	Reading Level	Correct Factor	Result	Limit	Margin	Remark
	[MHz]	[dBuV]	[dB/m]	[dBuV/m]	[dBuV/m]	[dB]	
1	17894.9825	26.16	19.02	45.18	54.00	8.82	AV

- Remark: 1. Measurement = Reading Level + Correct Factor.  
 2. If Peak Result complies with AV limit, AV Result is deemed to comply with AV limit.  
 3. Test setup: RBW: 1 MHz, VBW: 3 MHz, Sweep time: auto.  
 4. Peak: Peak detector.  
 5. AVG: VBW refer to section 6.1.  
 6. For above 6.5GHz part, filter losses were only considered in the spurious frequency bands and the authorized band were not corrected for HPF losses. The proper operation of the transmitter prior to adding the filter to the measurement chain.  
 7. Only the worst case emission was recorded, if it complies with the limit, the other emissions deemed to comply with the limit.  
 8. Since non-restricted band peak emissions are less than the average limit, they also comply with the -27dBm/MHz (68.2dBuV/m) limit.

Test Mode	Channel	Polarization	Verdict
11AC40	5310	Horizontal	PASS



**PK Result:**

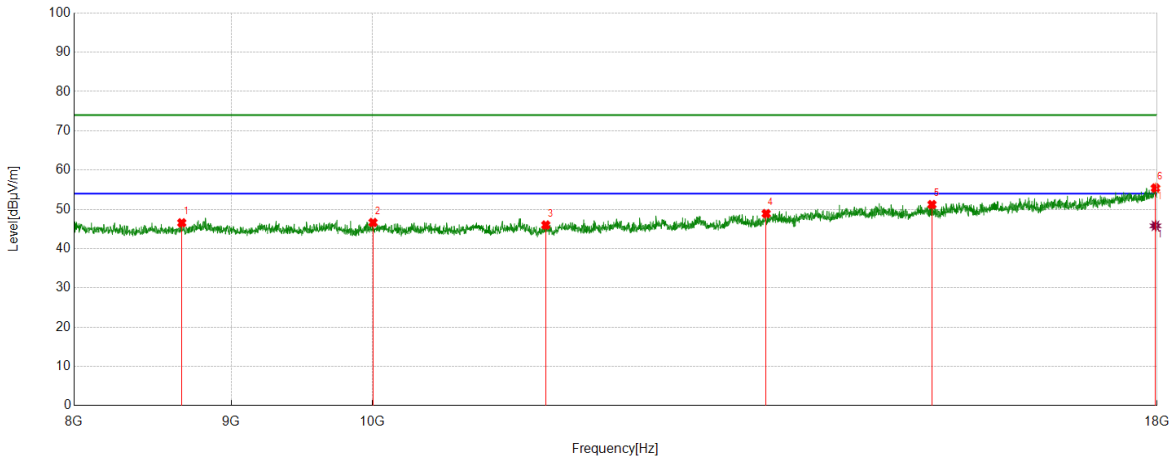
No.	Frequency	Reading Level	Correct Factor	Result	Limit	Margin	Remark
	[MHz]	[dBuV]	[dB/m]	[dBuV/m]	[dBuV/m]	[dB]	
1	8715.1192	43.93	3.00	46.93	74.00	27.07	peak
2	9820.3034	41.99	4.30	46.29	74.00	27.71	peak
3	11082.1804	41.35	5.26	46.61	74.00	27.39	peak
4	12744.124	40.51	7.43	47.94	74.00	26.06	peak
5	15577.9297	38.36	12.97	51.33	74.00	22.67	peak
6	17988.3314	36.10	18.54	54.64	74.00	19.36	peak

**AV Result:**

No.	Frequency	Reading Level	Correct Factor	Result	Limit	Margin	Remark
	[MHz]	[dBuV]	[dB/m]	[dBuV/m]	[dBuV/m]	[dB]	
1	17988.3314	26.94	18.54	45.48	54.00	8.52	AV

- Remark:
1. Measurement = Reading Level + Correct Factor.
  2. If Peak Result complies with AV limit, AV Result is deemed to comply with AV limit.
  3. Test setup: RBW: 1 MHz, VBW: 3 MHz, Sweep time: auto.
  4. Peak: Peak detector.
  5. AVG: VBW refer to section 6.1.
  6. For above 6.5GHz part, filter losses were only considered in the spurious frequency bands and the authorized band were not corrected for HPF losses. The proper operation of the transmitter prior to adding the filter to the measurement chain.
  7. Only the worst case emission was recorded, if it complies with the limit, the other emissions deemed to comply with the limit.
  8. Since non-restricted band peak emissions are less than the average limit, they also comply with the -27dBm/MHz (68.2dBuV/m) limit.

Test Mode	Channel	Polarization	Verdict
11AC40	5310	Vertical	PASS



**PK Result:**

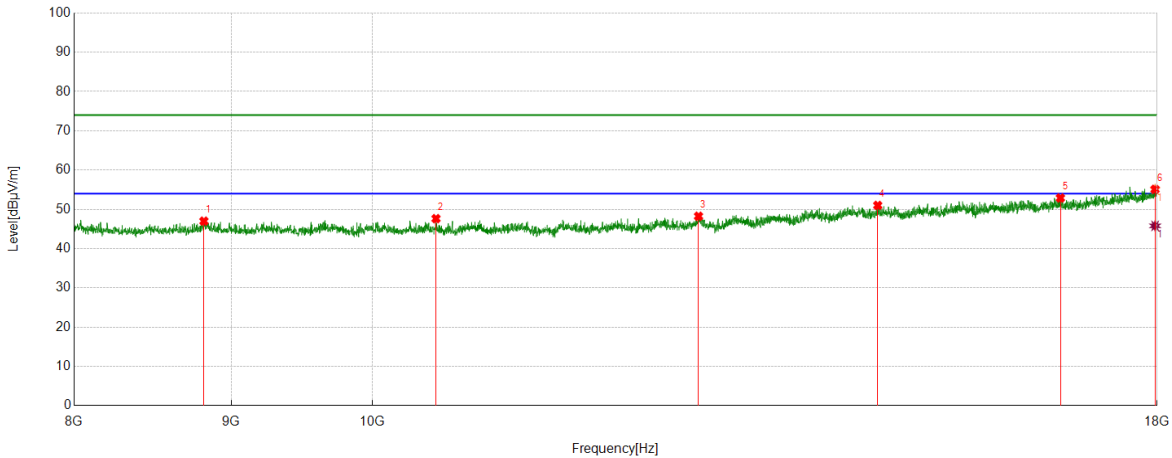
No.	Frequency	Reading Level	Correct Factor	Result	Limit	Margin	Remark
	[MHz]	[dBuV]	[dB/m]	[dBuV/m]	[dBuV/m]	[dB]	
1	8671.7786	43.41	3.15	46.56	74.00	27.44	peak
2	10007.0012	42.48	4.16	46.64	74.00	27.36	peak
3	11388.8982	40.30	5.70	46.00	74.00	28.00	peak
4	13432.5721	40.15	8.75	48.90	74.00	25.10	peak
5	15207.868	39.01	12.20	51.21	74.00	22.79	peak
6	17978.3297	36.78	18.64	55.42	74.00	18.58	peak

**AV Result:**

No.	Frequency	Reading Level	Correct Factor	Result	Limit	Margin	Remark
	[MHz]	[dBuV]	[dB/m]	[dBuV/m]	[dBuV/m]	[dB]	
1	17978.3297	27.16	18.64	45.80	54.00	8.20	AV

- Remark:
1. Measurement = Reading Level + Correct Factor.
  2. If Peak Result complies with AV limit, AV Result is deemed to comply with AV limit.
  3. Test setup: RBW: 1 MHz, VBW: 3 MHz, Sweep time: auto.
  4. Peak: Peak detector.
  5. AVG: VBW refer to section 6.1.
  6. For above 6.5GHz part, filter losses were only considered in the spurious frequency bands and the authorized band were not corrected for HPF losses. The proper operation of the transmitter prior to adding the filter to the measurement chain.
  7. Only the worst case emission was recorded, if it complies with the limit, the other emissions deemed to comply with the limit.
  8. Since non-restricted band peak emissions are less than the average limit, they also comply with the -27dBm/MHz (68.2dBuV/m) limit.

Test Mode	Channel	Polarization	Verdict
11AC40	5510	Horizontal	PASS



**PK Result:**

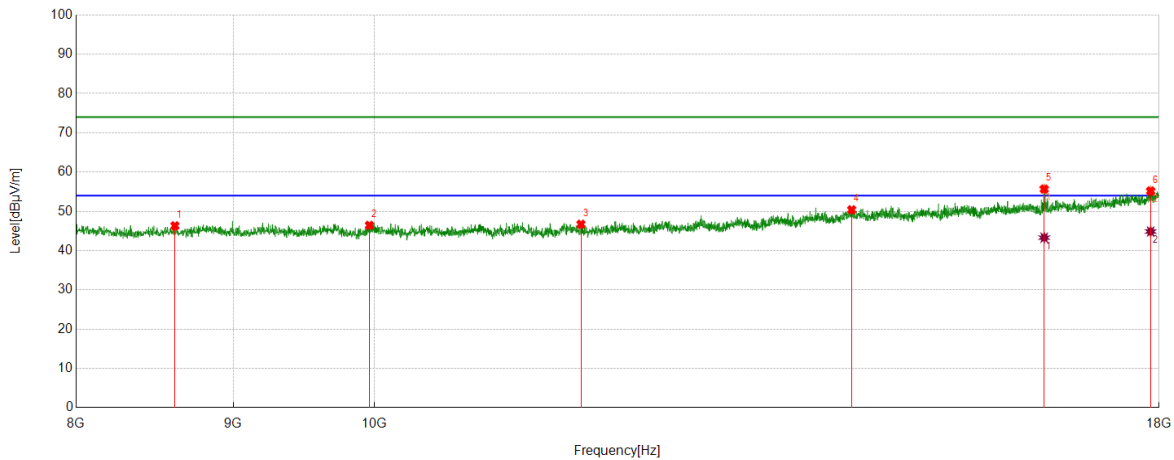
No.	Frequency	Reading Level	Correct Factor	Result	Limit	Margin	Remark
	[MHz]	[dBuV]	[dB/m]	[dBuV/m]	[dBuV/m]	[dB]	
1	8816.8028	43.27	3.72	46.99	74.00	27.01	peak
2	10490.4151	42.97	4.66	47.63	74.00	26.37	peak
3	12769.1282	40.56	7.68	48.24	74.00	25.76	peak
4	14602.7671	39.31	11.69	51.00	74.00	23.00	peak
5	16743.1239	37.80	15.09	52.89	74.00	21.11	peak
6	17973.3289	36.43	18.67	55.10	74.00	18.90	peak

**AV Result:**

No.	Frequency	Reading Level	Correct Factor	Result	Limit	Margin	Remark
	[MHz]	[dBuV]	[dB/m]	[dBuV/m]	[dBuV/m]	[dB]	
1	17973.3289	27.12	18.67	45.79	54.00	8.21	AV

- Remark:
1. Measurement = Reading Level + Correct Factor.
  2. If Peak Result complies with AV limit, AV Result is deemed to comply with AV limit.
  3. Test setup: RBW: 1 MHz, VBW: 3 MHz, Sweep time: auto.
  4. Peak: Peak detector.
  5. AVG: VBW refer to section 6.1.
  6. For above 6.5GHz part, filter losses were only considered in the spurious frequency bands and the authorized band were not corrected for HPF losses. The proper operation of the transmitter prior to adding the filter to the measurement chain.
  7. Only the worst case emission was recorded, if it complies with the limit, the other emissions deemed to comply with the limit.
  8. Since non-restricted band peak emissions are less than the average limit, they also comply with the -27dBm/MHz (68.2dBuV/m) limit.

Test Mode	Channel	Polarization	Verdict
11AC40	5510	Vertical	PASS



**PK Result:**

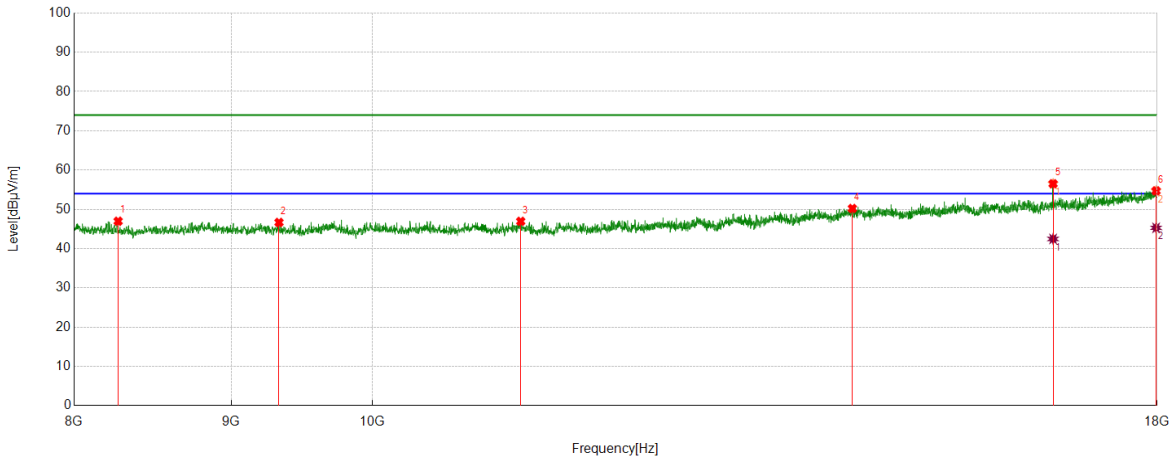
No.	Frequency	Reading Level	Correct Factor	Result	Limit	Margin	Remark
	[MHz]	[dBuV]	[dB/m]	[dBuV/m]	[dBuV/m]	[dB]	
1	8615.1025	43.35	2.96	46.31	74.00	27.69	peak
2	9965.3276	42.18	4.25	46.43	74.00	27.57	peak
3	11675.6126	40.65	6.05	46.70	74.00	27.30	peak
4	14299.3832	39.03	11.35	50.38	74.00	23.62	peak
5	16516.4194	41.19	14.48	55.67	74.00	18.33	peak
6	17886.6478	36.25	18.93	55.18	74.00	18.82	peak

**AV Result:**

No.	Frequency	Reading Level	Correct Factor	Result	Limit	Margin	Remark
	[MHz]	[dBuV]	[dB/m]	[dBuV/m]	[dBuV/m]	[dB]	
1	16516.4194	28.82	14.48	43.30	54.00	10.70	AV
2	17886.6478	25.93	18.93	44.86	54.00	9.14	AV

- Remark: 1. Measurement = Reading Level + Correct Factor.  
 2. If Peak Result complies with AV limit, AV Result is deemed to comply with AV limit.  
 3. Test setup: RBW: 1 MHz, VBW: 3 MHz, Sweep time: auto.  
 4. Peak: Peak detector.  
 5. AVG: VBW refer to section 6.1.  
 6. For above 6.5GHz part, filter losses were only considered in the spurious frequency bands and the authorized band were not corrected for HPF losses. The proper operation of the transmitter prior to adding the filter to the measurement chain.  
 7. Only the worst case emission was recorded, if it complies with the limit, the other emissions deemed to comply with the limit.  
 8. Since non-restricted band peak emissions are less than the average limit, they also comply with the -27dBm/MHz (68.2dBuV/m) limit.

Test Mode	Channel	Polarization	Verdict
11AC40	5550	Horizontal	PASS



PK Result:

No.	Frequency	Reading Level	Correct Factor	Result	Limit	Margin	Remark
	[MHz]	[dBuV]	[dB/m]	[dBuV/m]	[dBuV/m]	[dB]	
1	8268.3781	43.82	3.15	46.97	74.00	27.03	peak
2	9326.8878	43.01	3.65	46.66	74.00	27.34	peak
3	11177.1962	41.50	5.44	46.94	74.00	27.06	peak
4	14327.7213	38.87	11.34	50.21	74.00	23.79	peak
5	16651.4419	42.26	14.25	56.51	74.00	17.49	peak
6	17986.6644	36.13	18.57	54.70	74.00	19.30	peak

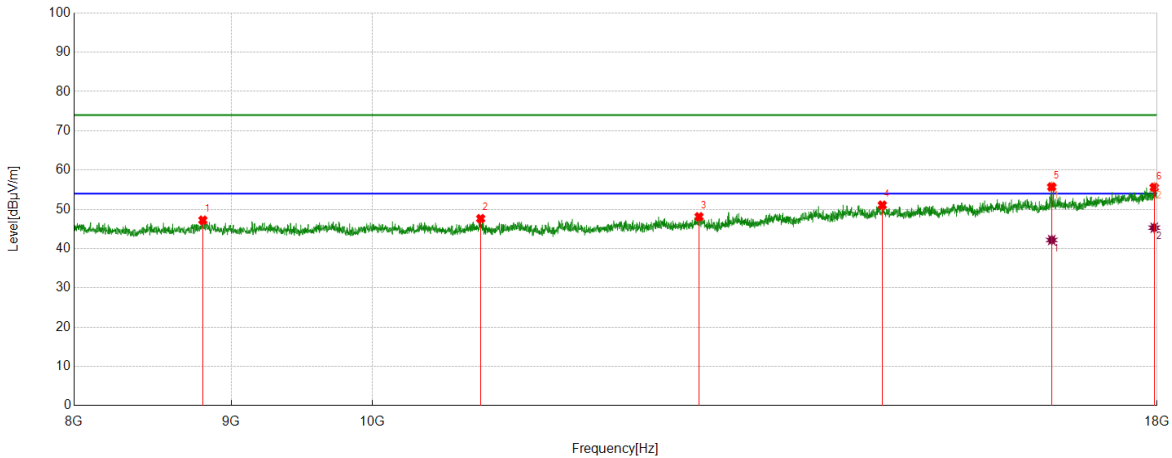
AV Result:

No.	Frequency	Reading Level	Correct Factor	Result	Limit	Margin	Remark
	[MHz]	[dBuV]	[dB/m]	[dBuV/m]	[dBuV/m]	[dB]	
1	16651.4419	28.21	14.25	42.46	54.00	11.54	AV
2	17986.6644	26.72	18.57	45.29	54.00	8.71	AV

- Remark: 1. Measurement = Reading Level + Correct Factor.  
2. If Peak Result complies with AV limit, AV Result is deemed to comply with AV limit.  
3. Test setup: RBW: 1 MHz, VBW: 3 MHz, Sweep time: auto.  
4. Peak: Peak detector.  
5. AVG: VBW refer to section 6.1.  
6. For above 6.5GHz part, filter losses were only considered in the spurious frequency bands and the authorized band were not corrected for HPF losses. The proper operation of the transmitter prior to adding the filter to the measurement chain.  
7. Only the worst case emission was recorded, if it complies with the limit, the other emissions deemed to comply with the limit.  
8. Since non-restricted band peak emissions are less than the average limit, they also comply with the -27dBm/MHz (68.2dBuV/m) limit.



Test Mode	Channel	Polarization	Verdict
11AC40	5550	Vertical	PASS



**PK Result:**

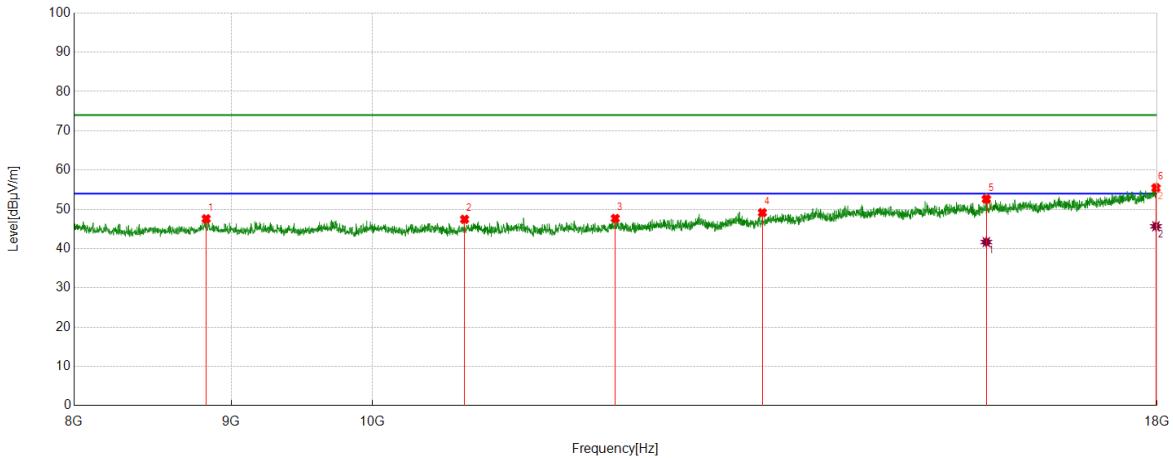
No.	Frequency	Reading Level	Correct Factor	Result	Limit	Margin	Remark
	[MHz]	[dBuV]	[dB/m]	[dBuV/m]	[dBuV/m]	[dB]	
1	8810.135	43.27	3.97	47.24	74.00	26.76	peak
2	10847.1412	42.75	4.89	47.64	74.00	26.36	peak
3	12774.129	40.43	7.68	48.11	74.00	25.89	peak
4	14652.7755	39.83	11.24	51.07	74.00	22.93	peak
5	16634.7725	41.04	14.68	55.72	74.00	18.28	peak
6	17961.6603	37.12	18.48	55.60	74.00	18.40	peak

**AV Result:**

No.	Frequency	Reading Level	Correct Factor	Result	Limit	Margin	Remark
	[MHz]	[dBuV]	[dB/m]	[dBuV/m]	[dBuV/m]	[dB]	
1	16634.7725	27.51	14.68	42.19	54.00	11.81	AV
2	17961.6603	26.84	18.48	45.32	54.00	8.68	AV

- Remark: 1. Measurement = Reading Level + Correct Factor.  
 2. If Peak Result complies with AV limit, AV Result is deemed to comply with AV limit.  
 3. Test setup: RBW: 1 MHz, VBW: 3 MHz, Sweep time: auto.  
 4. Peak: Peak detector.  
 5. AVG: VBW refer to section 6.1.  
 6. For above 6.5GHz part, filter losses were only considered in the spurious frequency bands and the authorized band were not corrected for HPF losses. The proper operation of the transmitter prior to adding the filter to the measurement chain.  
 7. Only the worst case emission was recorded, if it complies with the limit, the other emissions deemed to comply with the limit.  
 8. Since non-restricted band peak emissions are less than the average limit, they also comply with the -27dBm/MHz (68.2dBuV/m) limit.

Test Mode	Channel	Polarization	Verdict
11AC40	5670	Horizontal	PASS



**PK Result:**

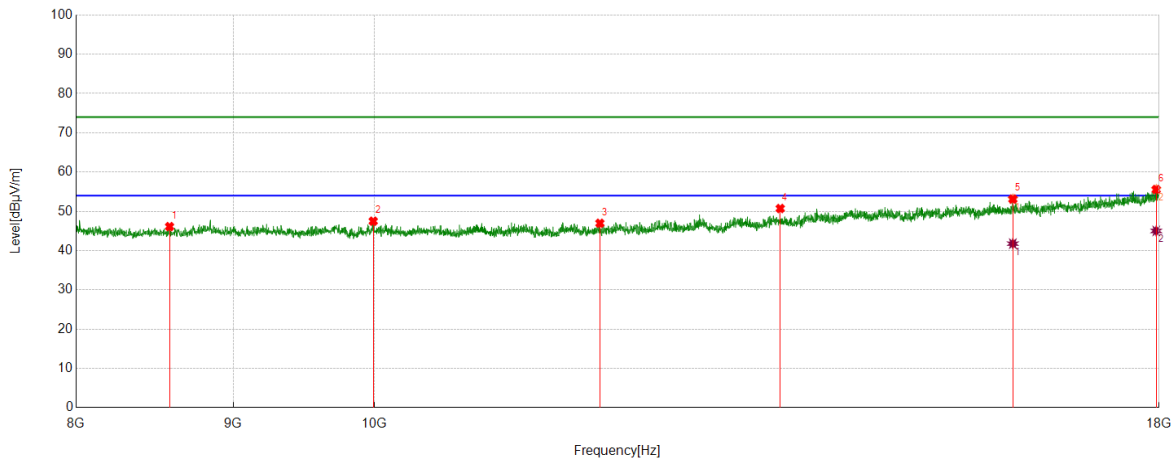
No.	Frequency	Reading Level	Correct Factor	Result	Limit	Margin	Remark
	[MHz]	[dBuV]	[dB/m]	[dBuV/m]	[dBuV/m]	[dB]	
1	8831.8053	43.86	3.73	47.59	74.00	26.41	peak
2	10717.1195	42.95	4.50	47.45	74.00	26.55	peak
3	11997.3329	41.21	6.47	47.68	74.00	26.32	peak
4	13394.2324	40.34	8.81	49.15	74.00	24.85	peak
5	15839.6399	39.13	13.49	52.62	74.00	21.38	peak
6	17984.9975	36.90	18.58	55.48	74.00	18.52	peak

**AV Result:**

No.	Frequency	Reading Level	Correct Factor	Result	Limit	Margin	Remark
	[MHz]	[dBuV]	[dB/m]	[dBuV/m]	[dBuV/m]	[dB]	
1	15839.6399	28.18	13.49	41.67	54.00	12.33	AV
2	17984.9975	27.10	18.58	45.68	54.00	8.32	AV

- Remark:
1. Measurement = Reading Level + Correct Factor.
  2. If Peak Result complies with AV limit, AV Result is deemed to comply with AV limit.
  3. Test setup: RBW: 1 MHz, VBW: 3 MHz, Sweep time: auto.
  4. Peak: Peak detector.
  5. AVG: VBW refer to section 6.1.
  6. For above 6.5GHz part, filter losses were only considered in the spurious frequency bands and the authorized band were not corrected for HPF losses. The proper operation of the transmitter prior to adding the filter to the measurement chain.
  7. Only the worst case emission was recorded, if it complies with the limit, the other emissions deemed to comply with the limit.
  8. Since non-restricted band peak emissions are less than the average limit, they also comply with the -27dBm/MHz (68.2dBuV/m) limit.

Test Mode	Channel	Polarization	Verdict
11AC40	5670	Vertical	PASS


**PK Result:**

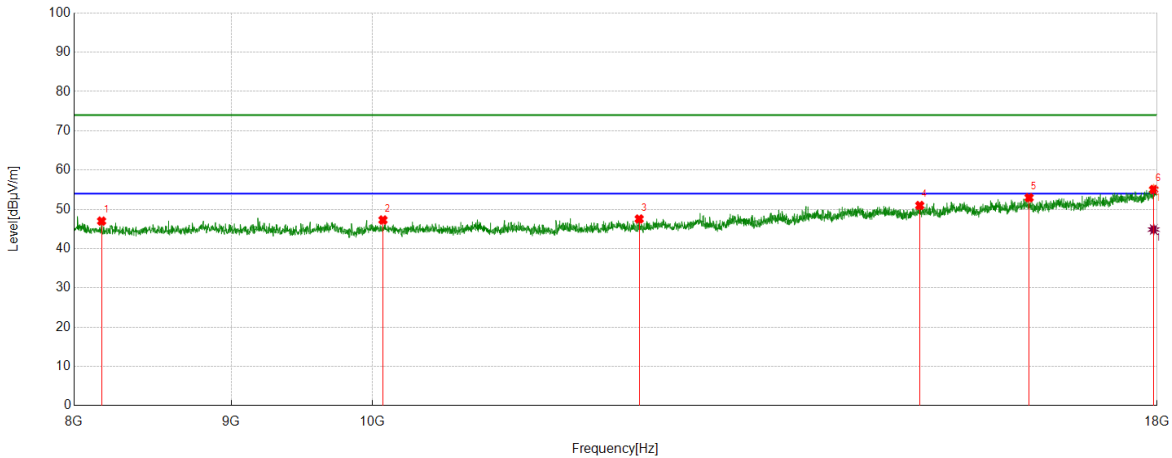
No.	Frequency	Reading Level	Correct Factor	Result	Limit	Margin	Remark
	[MHz]	[dBuV]	[dB/m]	[dBuV/m]	[dBuV/m]	[dB]	
1	8580.0967	42.94	3.17	46.11	74.00	27.89	peak
2	9993.6656	43.45	4.04	47.49	74.00	26.51	peak
3	11842.3071	40.72	6.24	46.96	74.00	27.04	peak
4	13554.259	41.55	9.17	50.72	74.00	23.28	peak
5	16133.0222	39.47	13.65	53.12	74.00	20.88	peak
6	17961.6603	37.08	18.48	55.56	74.00	18.44	peak

**AV Result:**

No.	Frequency	Reading Level	Correct Factor	Result	Limit	Margin	Remark
	[MHz]	[dBuV]	[dB/m]	[dBuV/m]	[dBuV/m]	[dB]	
1	16133.0222	28.12	13.65	41.77	54.00	12.23	AV
2	17961.6603	26.53	18.48	45.01	54.00	8.99	AV

- Remark: 1. Measurement = Reading Level + Correct Factor.  
 2. If Peak Result complies with AV limit, AV Result is deemed to comply with AV limit.  
 3. Test setup: RBW: 1 MHz, VBW: 3 MHz, Sweep time: auto.  
 4. Peak: Peak detector.  
 5. AVG: VBW refer to section 6.1.  
 6. For above 6.5GHz part, filter losses were only considered in the spurious frequency bands and the authorized band were not corrected for HPF losses. The proper operation of the transmitter prior to adding the filter to the measurement chain.  
 7. Only the worst case emission was recorded, if it complies with the limit, the other emissions deemed to comply with the limit.  
 8. Since non-restricted band peak emissions are less than the average limit, they also comply with the -27dBm/MHz (68.2dBuV/m) limit.

Test Mode	Channel	Polarization	Verdict
11AC40	5755	Horizontal	PASS



PK Result:

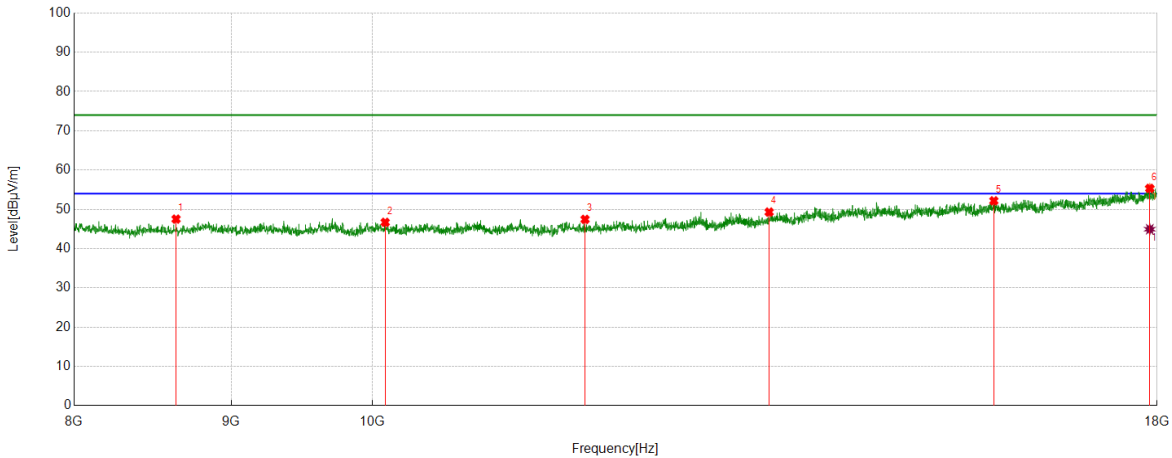
No.	Frequency	Reading Level	Correct Factor	Result	Limit	Margin	Remark
	[MHz]	[dBuV]	[dB/m]	[dBuV/m]	[dBuV/m]	[dB]	
1	8166.6944	43.73	3.27	47.00	74.00	27.00	peak
2	10082.0137	42.74	4.54	47.28	74.00	26.72	peak
3	12214.0357	40.55	6.99	47.54	74.00	26.46	peak
4	15069.5116	39.02	11.96	50.98	74.00	23.02	peak
5	16354.7258	39.06	13.90	52.96	74.00	21.04	peak
6	17954.9925	36.69	18.36	55.05	74.00	18.95	peak

AV Result:

No.	Frequency	Reading Level	Correct Factor	Result	Limit	Margin	Remark
	[MHz]	[dBuV]	[dB/m]	[dBuV/m]	[dBuV/m]	[dB]	
1	17954.9925	26.50	18.36	44.86	54.00	9.14	AV

- Remark: 1. Measurement = Reading Level + Correct Factor.  
 2. If Peak Result complies with AV limit, AV Result is deemed to comply with AV limit.  
 3. Test setup: RBW: 1 MHz, VBW: 3 MHz, Sweep time: auto.  
 4. Peak: Peak detector.  
 5. AVG: VBW refer to section 6.1.  
 6. For above 6.5GHz part, filter losses were only considered in the spurious frequency bands and the authorized band were not corrected for HPF losses. The proper operation of the transmitter prior to adding the filter to the measurement chain.  
 7. Only the worst case emission was recorded, if it complies with the limit, the other emissions deemed to comply with the limit.  
 8. Since non-restricted band peak emissions are less than the average limit, they also comply with the -27dBm/MHz (68.2dBuV/m) limit.

Test Mode	Channel	Polarization	Verdict
11AC40	5755	Vertical	PASS



**PK Result:**

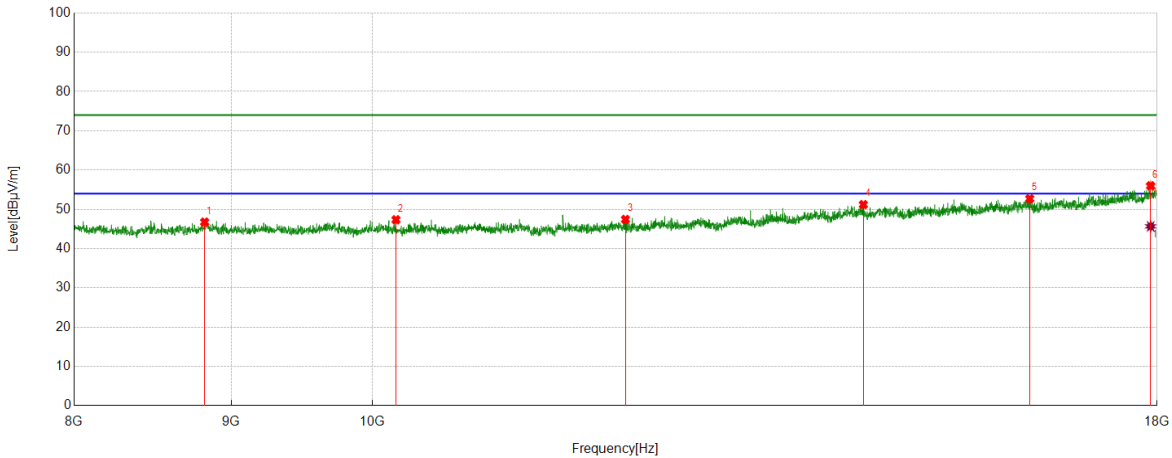
No.	Frequency	Reading Level	Correct Factor	Result	Limit	Margin	Remark
	[MHz]	[dBuV]	[dB/m]	[dBuV/m]	[dBuV/m]	[dB]	
1	8635.1059	44.26	3.25	47.51	74.00	26.49	peak
2	10098.6831	42.15	4.54	46.69	74.00	27.31	peak
3	11728.9548	41.67	5.77	47.44	74.00	26.56	peak
4	13462.5771	40.21	9.09	49.30	74.00	24.70	peak
5	15929.6549	38.81	13.36	52.17	74.00	21.83	peak
6	17901.6503	36.32	19.01	55.33	74.00	18.67	peak

**AV Result:**

No.	Frequency	Reading Level	Correct Factor	Result	Limit	Margin	Remark
	[MHz]	[dBuV]	[dB/m]	[dBuV/m]	[dBuV/m]	[dB]	
1	17901.6503	25.92	19.01	44.93	54.00	9.07	AV

- Remark:
1. Measurement = Reading Level + Correct Factor.
  2. If Peak Result complies with AV limit, AV Result is deemed to comply with AV limit.
  3. Test setup: RBW: 1 MHz, VBW: 3 MHz, Sweep time: auto.
  4. Peak: Peak detector.
  5. AVG: VBW refer to section 6.1.
  6. For above 6.5GHz part, filter losses were only considered in the spurious frequency bands and the authorized band were not corrected for HPF losses. The proper operation of the transmitter prior to adding the filter to the measurement chain.
  7. Only the worst case emission was recorded, if it complies with the limit, the other emissions deemed to comply with the limit.
  8. Since non-restricted band peak emissions are less than the average limit, they also comply with the -27dBm/MHz (68.2dBuV/m) limit.

Test Mode	Channel	Polarization	Verdict
11AC40	5795	Horizontal	PASS



**PK Result:**

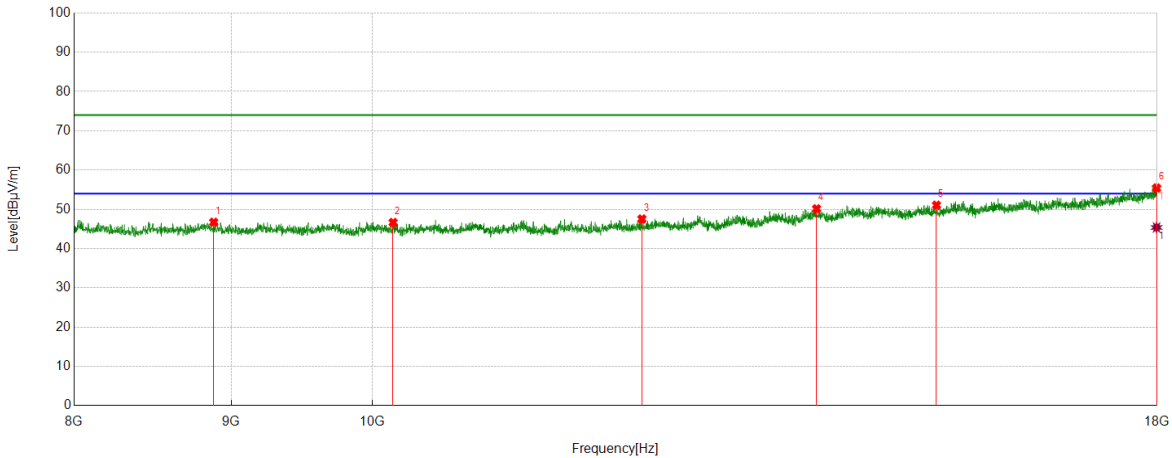
No.	Frequency	Reading Level	Correct Factor	Result	Limit	Margin	Remark
	[MHz]	[dBuV]	[dB/m]	[dBuV/m]	[dBuV/m]	[dB]	
1	8821.8036	43.12	3.63	46.75	74.00	27.25	peak
2	10180.3634	42.94	4.40	47.34	74.00	26.66	peak
3	12089.0148	40.71	6.72	47.43	74.00	26.57	peak
4	14446.0743	39.86	11.34	51.20	74.00	22.80	peak
5	16363.0605	39.02	13.68	52.70	74.00	21.30	peak
6	17913.3189	37.28	18.71	55.99	74.00	18.01	peak

**AV Result:**

No.	Frequency	Reading Level	Correct Factor	Result	Limit	Margin	Remark
	[MHz]	[dBuV]	[dB/m]	[dBuV/m]	[dBuV/m]	[dB]	
1	17913.3189	26.95	18.71	45.66	54.00	8.34	AV

- Remark:
1. Measurement = Reading Level + Correct Factor.
  2. If Peak Result complies with AV limit, AV Result is deemed to comply with AV limit.
  3. Test setup: RBW: 1 MHz, VBW: 3 MHz, Sweep time: auto.
  4. Peak: Peak detector.
  5. AVG: VBW refer to section 6.1.
  6. For above 6.5GHz part, filter losses were only considered in the spurious frequency bands and the authorized band were not corrected for HPF losses. The proper operation of the transmitter prior to adding the filter to the measurement chain.
  7. Only the worst case emission was recorded, if it complies with the limit, the other emissions deemed to comply with the limit.
  8. Since non-restricted band peak emissions are less than the average limit, they also comply with the -27dBm/MHz (68.2dBuV/m) limit.

Test Mode	Channel	Polarization	Verdict
11AC40	5795	Vertical	PASS



**PK Result:**

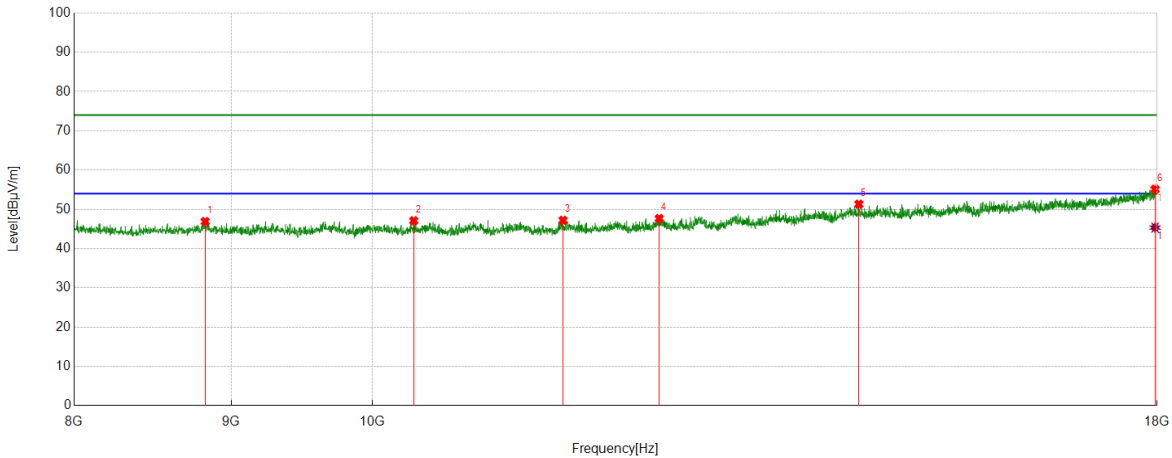
No.	Frequency	Reading Level	Correct Factor	Result	Limit	Margin	Remark
	[MHz]	[dBuV]	[dB/m]	[dBuV/m]	[dBuV/m]	[dB]	
1	8881.8136	43.08	3.63	46.71	74.00	27.29	peak
2	10158.6931	42.54	4.11	46.65	74.00	27.35	peak
3	12239.0398	40.72	6.82	47.54	74.00	26.46	peak
4	13949.3249	39.07	11.07	50.14	74.00	23.86	peak
5	15259.5433	37.85	13.20	51.05	74.00	22.95	peak
6	17993.3322	36.84	18.58	55.42	74.00	18.58	peak

**AV Result:**

No.	Frequency	Reading Level	Correct Factor	Result	Limit	Margin	Remark
	[MHz]	[dBuV]	[dB/m]	[dBuV/m]	[dBuV/m]	[dB]	
1	17993.3322	26.80	18.58	45.38	54.00	8.62	AV

- Remark: 1. Measurement = Reading Level + Correct Factor.  
 2. If Peak Result complies with AV limit, AV Result is deemed to comply with AV limit.  
 3. Test setup: RBW: 1 MHz, VBW: 3 MHz, Sweep time: auto.  
 4. Peak: Peak detector.  
 5. AVG: VBW refer to section 6.1.  
 6. For above 6.5GHz part, filter losses were only considered in the spurious frequency bands and the authorized band were not corrected for HPF losses. The proper operation of the transmitter prior to adding the filter to the measurement chain.  
 7. Only the worst case emission was recorded, if it complies with the limit, the other emissions deemed to comply with the limit.  
 8. Since non-restricted band peak emissions are less than the average limit, they also comply with the -27dBm/MHz (68.2dBuV/m) limit.

Test Mode	Channel	Polarization	Verdict
11AC80	5210	Horizontal	PASS



PK Result:

No.	Frequency	Reading Level	Correct Factor	Result	Limit	Margin	Remark
	[MHz]	[dBuV]	[dB/m]	[dBuV/m]	[dBuV/m]	[dB]	
1	8825.1375	43.22	3.68	46.90	74.00	27.10	peak
2	10317.0528	42.80	4.30	47.10	74.00	26.90	peak
3	11537.2562	41.10	6.10	47.20	74.00	26.80	peak
4	12399.0665	40.78	6.88	47.66	74.00	26.34	peak
5	14397.733	39.77	11.54	51.31	74.00	22.69	peak
6	17973.3289	36.45	18.67	55.12	74.00	18.88	peak

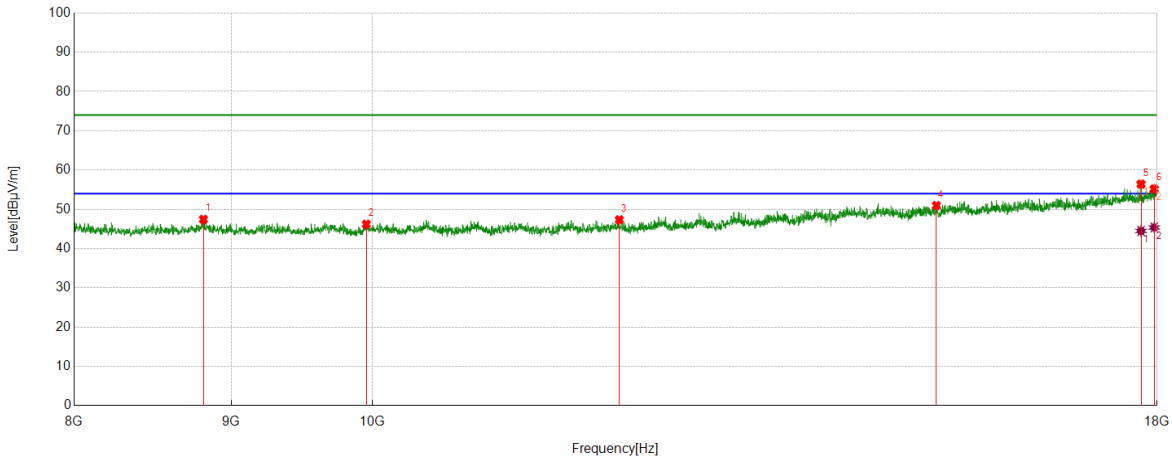
AV Result:

No.	Frequency	Reading Level	Correct Factor	Result	Limit	Margin	Remark
	[MHz]	[dBuV]	[dB/m]	[dBuV/m]	[dBuV/m]	[dB]	
1	17973.3289	26.68	18.67	45.35	54.00	8.65	AV

- Remark: 1. Measurement = Reading Level + Correct Factor.  
 2. If Peak Result complies with AV limit, AV Result is deemed to comply with AV limit.  
 3. Test setup: RBW: 1 MHz, VBW: 3 MHz, Sweep time: auto.  
 4. Peak: Peak detector.  
 5. AVG: VBW refer to section 6.1.  
 6. For above 6.5GHz part, filter losses were only considered in the spurious frequency bands and the authorized band were not corrected for HPF losses. The proper operation of the transmitter prior to adding the filter to the measurement chain.  
 7. Only the worst case emission was recorded, if it complies with the limit, the other emissions deemed to comply with the limit.  
 8. Since non-restricted band peak emissions are less than the average limit, they also comply with the -27dBm/MHz (68.2dBuV/m) limit.



Test Mode	Channel	Polarization	Verdict
11AC80	5210	Vertical	PASS



**PK Result:**

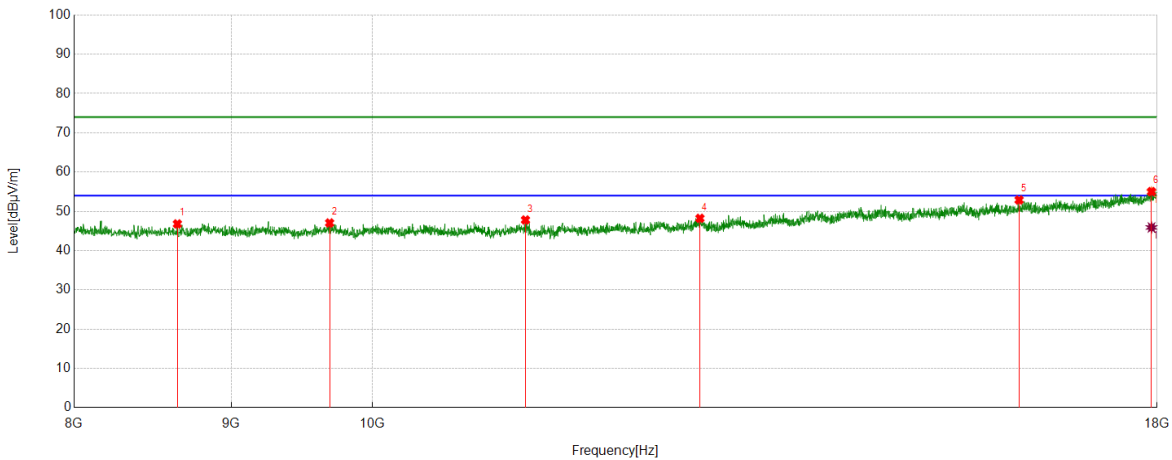
No.	Frequency	Reading Level	Correct Factor	Result	Limit	Margin	Remark
	[MHz]	[dBuV]	[dB/m]	[dBuV/m]	[dBuV/m]	[dB]	
1	8813.4689	43.59	3.85	47.44	74.00	26.56	peak
2	9956.9928	41.81	4.40	46.21	74.00	27.79	peak
3	12034.0057	40.47	6.87	47.34	74.00	26.66	peak
4	15257.8763	37.82	13.15	50.97	74.00	23.03	peak
5	17784.9642	38.41	18.01	56.42	74.00	17.58	peak
6	17961.6603	36.73	18.48	55.21	74.00	18.79	peak

**AV Result:**

No.	Frequency	Reading Level	Correct Factor	Result	Limit	Margin	Remark
	[MHz]	[dBuV]	[dB/m]	[dBuV/m]	[dBuV/m]	[dB]	
1	17784.9642	26.48	18.01	44.49	54.00	9.51	AV
2	17961.6603	26.90	18.48	45.38	54.00	8.62	AV

- Remark: 1. Measurement = Reading Level + Correct Factor.  
 2. If Peak Result complies with AV limit, AV Result is deemed to comply with AV limit.  
 3. Test setup: RBW: 1 MHz, VBW: 3 MHz, Sweep time: auto.  
 4. Peak: Peak detector.  
 5. AVG: VBW refer to section 6.1.  
 6. For above 6.5GHz part, filter losses were only considered in the spurious frequency bands and the authorized band were not corrected for HPF losses. The proper operation of the transmitter prior to adding the filter to the measurement chain.  
 7. Only the worst case emission was recorded, if it complies with the limit, the other emissions deemed to comply with the limit.  
 8. Since non-restricted band peak emissions are less than the average limit, they also comply with the -27dBm/MHz (68.2dBuV/m) limit.

Test Mode	Channel	Polarization	Verdict
11AC80	5290	Horizontal	PASS



**PK Result:**

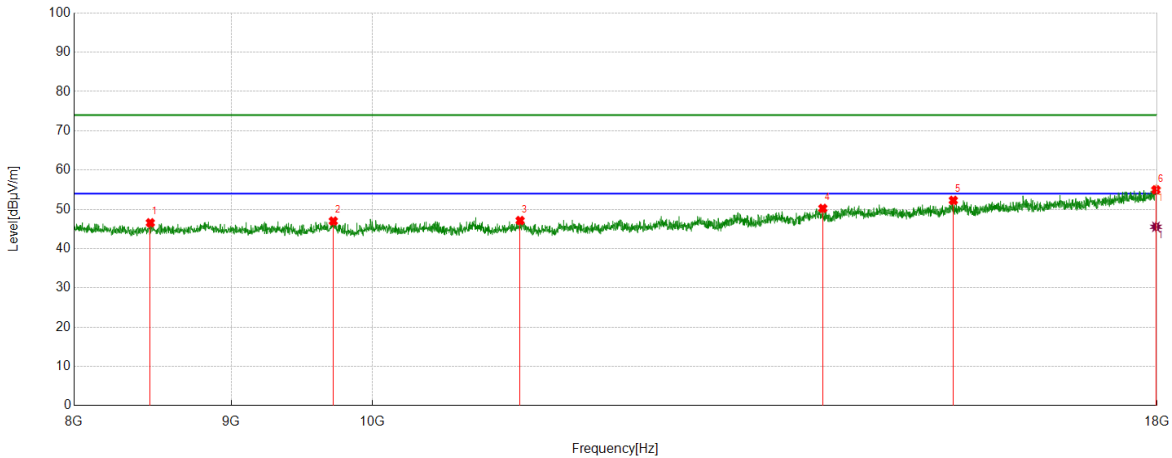
No.	Frequency	Reading Level	Correct Factor	Result	Limit	Margin	Remark
	[MHz]	[dBuV]	[dB/m]	[dBuV/m]	[dBuV/m]	[dB]	
1	8643.4406	43.56	3.23	46.79	74.00	27.21	peak
2	9686.9478	43.04	4.00	47.04	74.00	26.96	peak
3	11217.2029	42.62	5.18	47.80	74.00	26.20	peak
4	12782.4637	40.58	7.64	48.22	74.00	25.78	peak
5	16233.0388	39.00	13.89	52.89	74.00	21.11	peak
6	17924.9875	36.44	18.58	55.02	74.00	18.98	peak

**AV Result:**

No.	Frequency	Reading Level	Correct Factor	Result	Limit	Margin	Remark
	[MHz]	[dBuV]	[dB/m]	[dBuV/m]	[dBuV/m]	[dB]	
1	17924.9875	27.31	18.58	45.89	54.00	8.11	AV

- Remark:
1. Measurement = Reading Level + Correct Factor.
  2. If Peak Result complies with AV limit, AV Result is deemed to comply with AV limit.
  3. Test setup: RBW: 1 MHz, VBW: 3 MHz, Sweep time: auto.
  4. Peak: Peak detector.
  5. AVG: VBW refer to section 6.1.
  6. For above 6.5GHz part, filter losses were only considered in the spurious frequency bands and the authorized band were not corrected for HPF losses. The proper operation of the transmitter prior to adding the filter to the measurement chain.
  7. Only the worst case emission was recorded, if it complies with the limit, the other emissions deemed to comply with the limit.
  8. Since non-restricted band peak emissions are less than the average limit, they also comply with the -27dBm/MHz (68.2dBuV/m) limit.

Test Mode	Channel	Polarization	Verdict
11AC80	5290	Vertical	PASS



**PK Result:**

No.	Frequency	Reading Level	Correct Factor	Result	Limit	Margin	Remark
	[MHz]	[dBuV]	[dB/m]	[dBuV/m]	[dBuV/m]	[dB]	
1	8470.0783	43.54	3.03	46.57	74.00	27.43	peak
2	9713.6189	42.47	4.54	47.01	74.00	26.99	peak
3	11172.1954	41.75	5.39	47.14	74.00	26.86	peak
4	14014.3357	39.51	10.73	50.24	74.00	23.76	peak
5	15452.9088	39.09	13.19	52.28	74.00	21.72	peak
6	17984.9975	36.39	18.58	54.97	74.00	19.03	peak

**AV Result:**

No.	Frequency	Reading Level	Correct Factor	Result	Limit	Margin	Remark
	[MHz]	[dBuV]	[dB/m]	[dBuV/m]	[dBuV/m]	[dB]	
1	17984.9975	26.97	18.58	45.55	54.00	8.45	AV

- Remark:
1. Measurement = Reading Level + Correct Factor.
  2. If Peak Result complies with AV limit, AV Result is deemed to comply with AV limit.
  3. Test setup: RBW: 1 MHz, VBW: 3 MHz, Sweep time: auto.
  4. Peak: Peak detector.
  5. AVG: VBW refer to section 6.1.
  6. For above 6.5GHz part, filter losses were only considered in the spurious frequency bands and the authorized band were not corrected for HPF losses. The proper operation of the transmitter prior to adding the filter to the measurement chain.
  7. Only the worst case emission was recorded, if it complies with the limit, the other emissions deemed to comply with the limit.
  8. Since non-restricted band peak emissions are less than the average limit, they also comply with the -27dBm/MHz (68.2dBuV/m) limit.