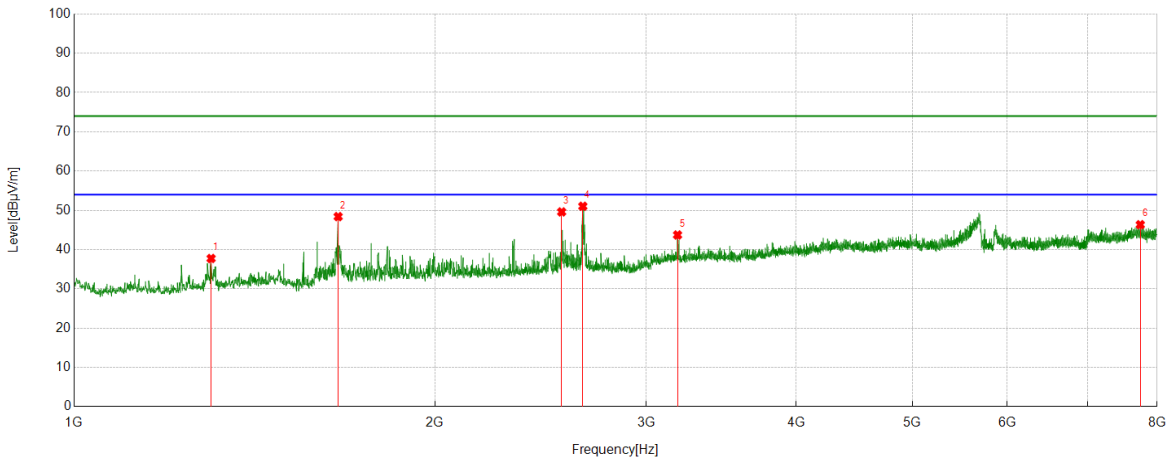


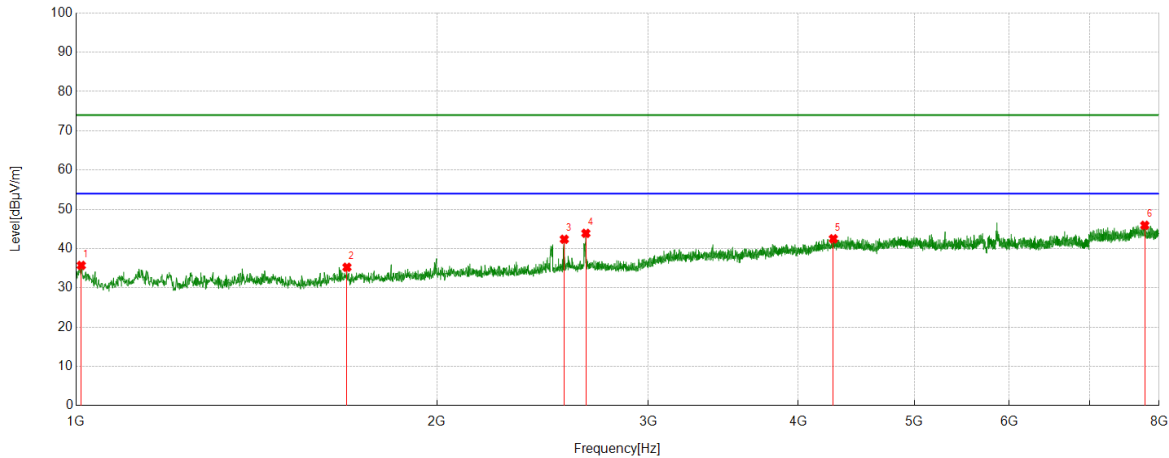
Test Mode	Channel	Polarization	Verdict
11A	5745	Vertical	PASS



No.	Frequency	Reading Level	Correct Factor	Result	Limit	Margin	Remark
	(MHz)	(dBuV/m)	(dB)	(dBuV/m)	(dBuV/m)	(dB)	
1	1301.0334	57.92	-20.18	37.74	74.00	36.26	peak
2	1660.4067	66.46	-18.06	48.40	74.00	25.60	peak
3	2550.2834	63.12	-13.52	49.60	74.00	24.40	peak
4	2656.0729	63.91	-12.88	51.03	74.00	22.97	peak
5	3185.7984	53.16	-9.43	43.73	74.00	30.27	peak
6	7745.6384	43.62	2.72	46.34	74.00	27.66	peak

- Remark: 1. Measurement = Reading Level + Correct Factor.
 2. If Peak Result complies with AV limit, AV Result is deemed to comply with AV limit.
 3. Test setup: RBW: 1 MHz, VBW: 3 MHz, Sweep time: auto.
 4. Peak: Peak detector.
 5. AVG: VBW refer to section 6.1.
 6. For below 6.5GHz part, filter losses were only considered in the spurious frequency bands and the authorized band were not corrected for Band Reject Filter losses.
 The proper operation of the transmitter prior to adding the filter to the measurement chain.
 7. Only the worst case emission was recorded, if it complies with the limit, the other emissions deemed to comply with the limit.
 8. Since non-restricted band peak emissions are less than the average limit, they also comply with the -27dBm/MHz (68.2dBuV/m) limit.

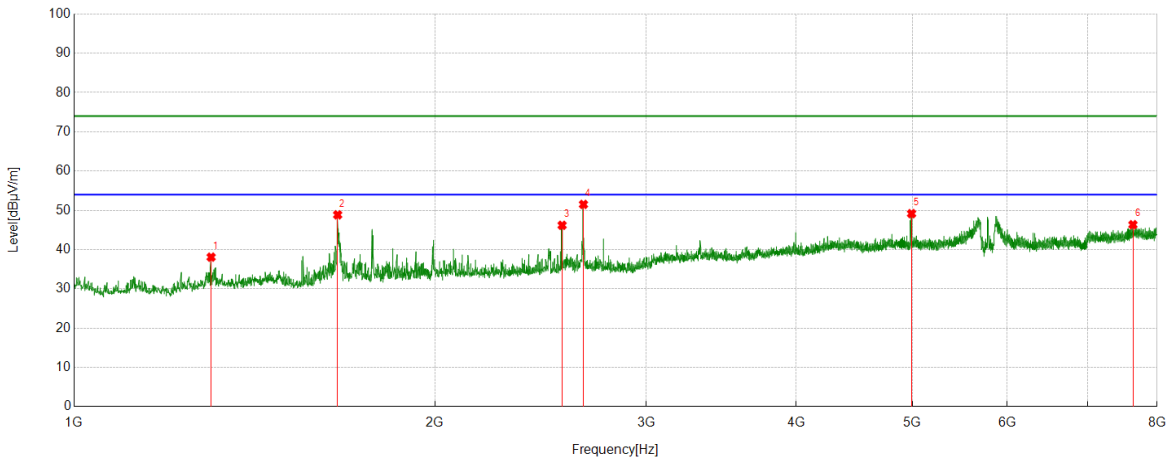
Test Mode	Channel	Polarization	Verdict
11A	5785	Horizontal	PASS



No.	Frequency	Reading Level	Correct Factor	Result	Limit	Margin	Remark
	(MHz)	(dBuV/m)	(dB)	(dBuV/m)	(dBuV/m)	(dB)	
1	1010.1122	57.23	-21.51	35.72	74.00	38.28	peak
2	1682.1869	53.13	-17.88	35.25	74.00	38.75	peak
3	2553.3948	55.89	-13.51	42.38	74.00	31.62	peak
4	2661.5179	56.78	-12.89	43.89	74.00	30.11	peak
5	4280.2534	46.53	-4.04	42.49	74.00	31.51	peak
6	7782.9759	43.26	2.67	45.93	74.00	28.07	peak

- Remark: 1. Measurement = Reading Level + Correct Factor.
 2. If Peak Result complies with AV limit, AV Result is deemed to comply with AV limit.
 3. Test setup: RBW: 1 MHz, VBW: 3 MHz, Sweep time: auto.
 4. Peak: Peak detector.
 5. AVG: VBW refer to section 6.1.
 6. For below 6.5GHz part, filter losses were only considered in the spurious frequency bands and the authorized band were not corrected for Band Reject Filter losses.
 The proper operation of the transmitter prior to adding the filter to the measurement chain.
 7. Only the worst case emission was recorded, if it complies with the limit, the other emissions deemed to comply with the limit.
 8. Since non-restricted band peak emissions are less than the average limit, they also comply with the -27dBm/MHz (68.2dBuV/m) limit.

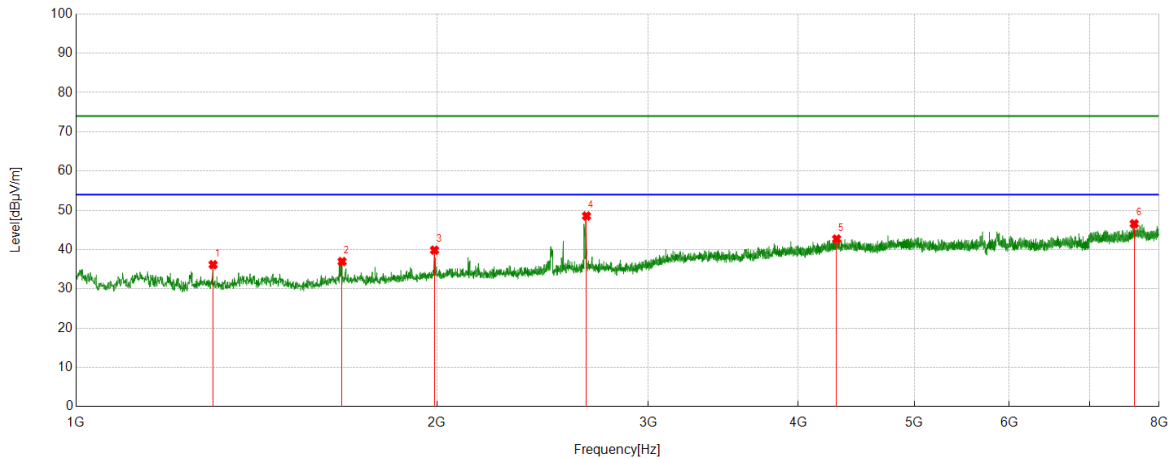
Test Mode	Channel	Polarization	Verdict
11A	5785	Vertical	PASS



No.	Frequency	Reading Level	Correct Factor	Result	Limit	Margin	Remark
	(MHz)	(dBuV/m)	(dB)	(dBuV/m)	(dBuV/m)	(dB)	
1	1301.0334	58.26	-20.18	38.08	74.00	35.92	peak
2	1658.851	66.92	-18.07	48.85	74.00	25.15	peak
3	2552.617	59.70	-13.51	46.19	74.00	27.81	peak
4	2659.1844	64.40	-12.89	51.51	74.00	22.49	peak
5	4992.777	51.74	-2.58	49.16	74.00	24.84	peak
6	7637.5153	43.84	2.50	46.34	74.00	27.66	peak

- Remark: 1. Measurement = Reading Level + Correct Factor.
 2. If Peak Result complies with AV limit, AV Result is deemed to comply with AV limit.
 3. Test setup: RBW: 1 MHz, VBW: 3 MHz, Sweep time: auto.
 4. Peak: Peak detector.
 5. AVG: VBW refer to section 6.1.
 6. For below 6.5GHz part, filter losses were only considered in the spurious frequency bands and the authorized band were not corrected for Band Reject Filter losses.
 The proper operation of the transmitter prior to adding the filter to the measurement chain.
 7. Only the worst case emission was recorded, if it complies with the limit, the other emissions deemed to comply with the limit.
 8. Since non-restricted band peak emissions are less than the average limit, they also comply with the -27dBm/MHz (68.2dBuV/m) limit.

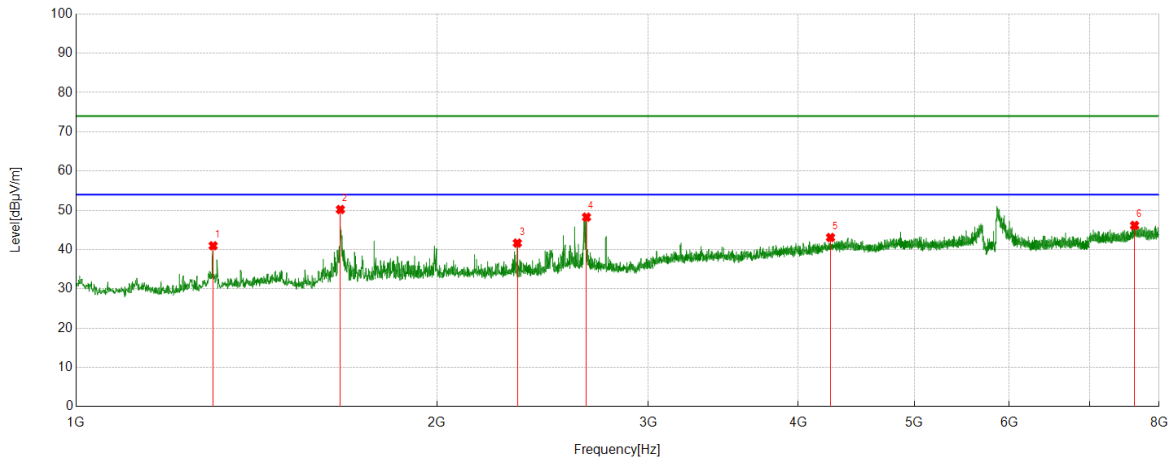
Test Mode	Channel	Polarization	Verdict
11A	5825	Horizontal	PASS



No.	Frequency	Reading Level	Correct Factor	Result	Limit	Margin	Remark
	(MHz)	(dBuV/m)	(dB)	(dBuV/m)	(dBuV/m)	(dB)	
1	1301.0334	56.35	-20.18	36.17	74.00	37.83	peak
2	1666.6296	54.87	-17.92	36.95	74.00	37.05	peak
3	1990.2211	55.94	-16.08	39.86	74.00	34.14	peak
4	2664.6294	61.44	-12.88	48.56	74.00	25.44	peak
5	4307.4786	46.87	-4.17	42.70	74.00	31.30	peak
6	7626.6252	44.01	2.57	46.58	74.00	27.42	peak

- Remark: 1. Measurement = Reading Level + Correct Factor.
 2. If Peak Result complies with AV limit, AV Result is deemed to comply with AV limit.
 3. Test setup: RBW: 1 MHz, VBW: 3 MHz, Sweep time: auto.
 4. Peak: Peak detector.
 5. AVG: VBW refer to section 6.1.
 6. For below 6.5GHz part, filter losses were only considered in the spurious frequency bands and the authorized band were not corrected for Band Reject Filter losses.
 The proper operation of the transmitter prior to adding the filter to the measurement chain.
 7. Only the worst case emission was recorded, if it complies with the limit, the other emissions deemed to comply with the limit.
 8. Since non-restricted band peak emissions are less than the average limit, they also comply with the -27dBm/MHz (68.2dBuV/m) limit.

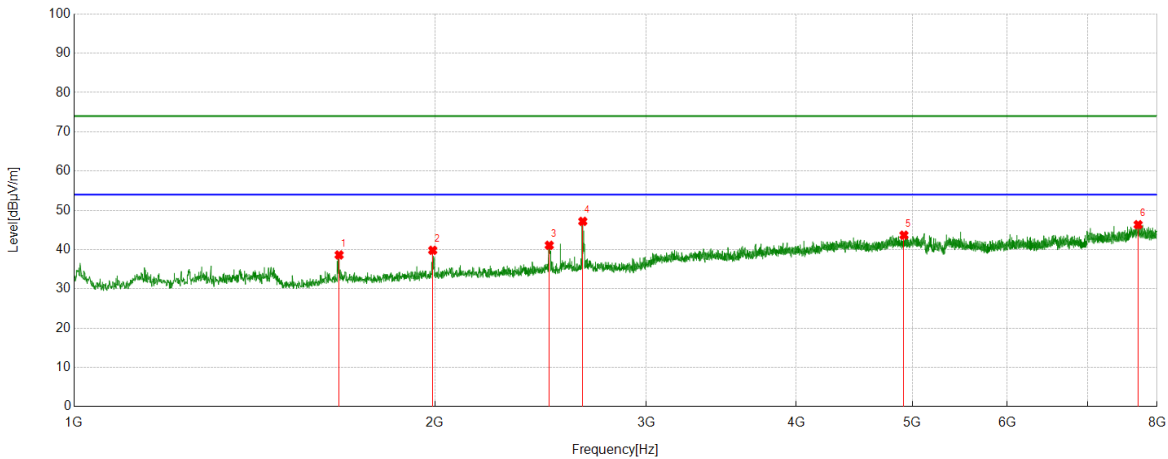
Test Mode	Channel	Polarization	Verdict
11A	5825	Vertical	PASS



No.	Frequency	Reading Level	Correct Factor	Result	Limit	Margin	Remark
	(MHz)	(dBuV/m)	(dB)	(dBuV/m)	(dBuV/m)	(dB)	
1	1301.0334	61.16	-20.18	40.98	74.00	33.02	peak
2	1661.1846	68.25	-18.04	50.21	74.00	23.79	peak
3	2333.2593	56.56	-14.90	41.66	74.00	32.34	peak
4	2664.6294	61.15	-12.88	48.27	74.00	25.73	peak
5	4256.9174	47.94	-4.86	43.08	74.00	30.92	peak
6	7632.0702	43.62	2.54	46.16	74.00	27.84	peak

- Remark: 1. Measurement = Reading Level + Correct Factor.
 2. If Peak Result complies with AV limit, AV Result is deemed to comply with AV limit.
 3. Test setup: RBW: 1 MHz, VBW: 3 MHz, Sweep time: auto.
 4. Peak: Peak detector.
 5. AVG: VBW refer to section 6.1.
 6. For below 6.5GHz part, filter losses were only considered in the spurious frequency bands and the authorized band were not corrected for Band Reject Filter losses.
 The proper operation of the transmitter prior to adding the filter to the measurement chain.
 7. Only the worst case emission was recorded, if it complies with the limit, the other emissions deemed to comply with the limit.
 8. Since non-restricted band peak emissions are less than the average limit, they also comply with the -27dBm/MHz (68.2dBuV/m) limit.

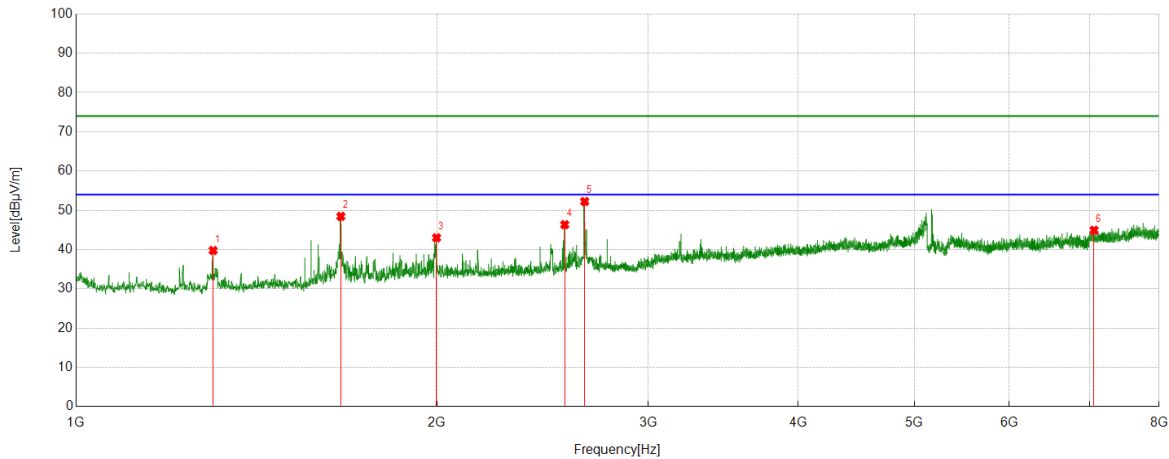
Test Mode	Channel	Polarization	Verdict
11AC20	5180	Horizontal	PASS



No.	Frequency	Reading Level	Correct Factor	Result	Limit	Margin	Remark
	(MHz)	(dBuV/m)	(dB)	(dBuV/m)	(dBuV/m)	(dB)	
1	1663.5182	56.68	-18.04	38.64	74.00	35.36	peak
2	1990.999	55.88	-16.06	39.82	74.00	34.18	peak
3	2490.3878	54.96	-13.86	41.10	74.00	32.90	peak
4	2656.0729	59.98	-12.79	47.19	74.00	26.81	peak
5	4920.4356	47.01	-3.34	43.67	74.00	30.33	peak
6	7714.5238	43.68	2.66	46.34	74.00	27.66	peak

- Remark: 1. Measurement = Reading Level + Correct Factor.
 2. If Peak Result complies with AV limit, AV Result is deemed to comply with AV limit.
 3. Test setup: RBW: 1 MHz, VBW: 3 MHz, Sweep time: auto.
 4. Peak: Peak detector.
 5. AVG: VBW refer to section 6.1.
 6. For below 6.5GHz part, filter losses were only considered in the spurious frequency bands and the authorized band were not corrected for Band Reject Filter losses.
 The proper operation of the transmitter prior to adding the filter to the measurement chain.
 7. Only the worst case emission was recorded, if it complies with the limit, the other emissions deemed to comply with the limit.
 8. Since non-restricted band peak emissions are less than the average limit, they also comply with the -27dBm/MHz (68.2dBuV/m) limit.

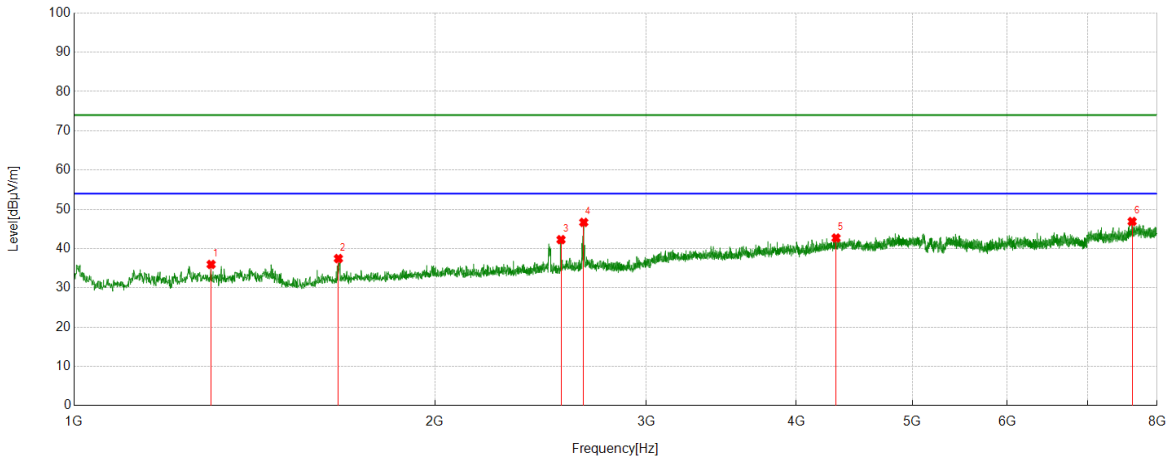
Test Mode	Channel	Polarization	Verdict
11AC20	5180	Vertical	PASS



No.	Frequency	Reading Level	Correct Factor	Result	Limit	Margin	Remark
	(MHz)	(dBuV/m)	(dB)	(dBuV/m)	(dBuV/m)	(dB)	
1	1301.0334	60.04	-20.26	39.78	74.00	34.22	peak
2	1662.7403	66.53	-18.06	48.47	74.00	25.53	peak
3	1997.9998	58.96	-15.95	43.01	74.00	30.99	peak
4	2555.7284	59.71	-13.36	46.35	74.00	27.65	peak
5	2655.295	65.04	-12.79	52.25	74.00	21.75	peak
6	7061.1179	43.88	1.05	44.93	74.00	29.07	peak

- Remark: 1. Measurement = Reading Level + Correct Factor.
 2. If Peak Result complies with AV limit, AV Result is deemed to comply with AV limit.
 3. Test setup: RBW: 1 MHz, VBW: 3 MHz, Sweep time: auto.
 4. Peak: Peak detector.
 5. AVG: VBW refer to section 6.1.
 6. For below 6.5GHz part, filter losses were only considered in the spurious frequency bands and the authorized band were not corrected for Band Reject Filter losses.
 The proper operation of the transmitter prior to adding the filter to the measurement chain.
 7. Only the worst case emission was recorded, if it complies with the limit, the other emissions deemed to comply with the limit.
 8. Since non-restricted band peak emissions are less than the average limit, they also comply with the -27dBm/MHz (68.2dBuV/m) limit.

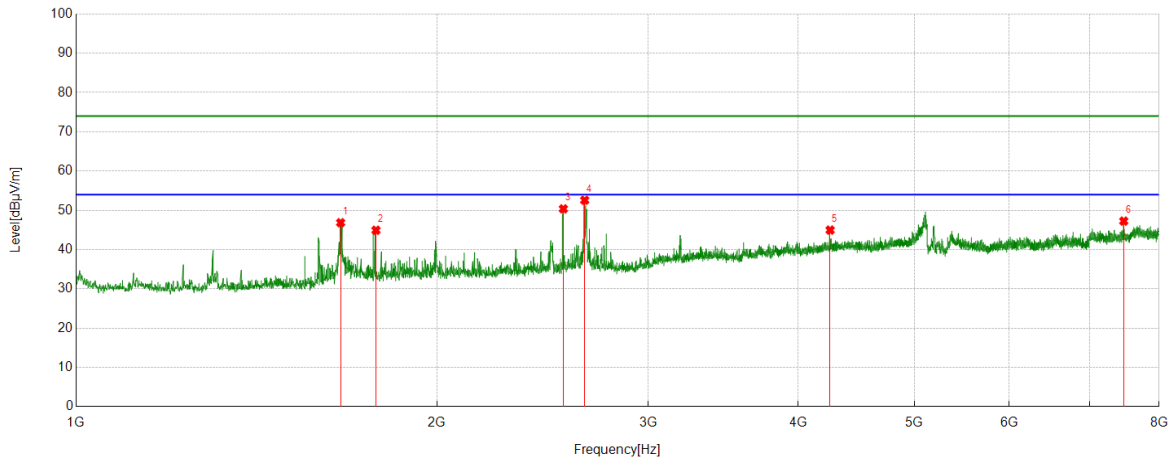
Test Mode	Channel	Polarization	Verdict
11AC20	5200	Horizontal	PASS



No.	Frequency	Reading Level	Correct Factor	Result	Limit	Margin	Remark
	(MHz)	(dBuV/m)	(dB)	(dBuV/m)	(dBuV/m)	(dB)	
1	1301.0334	56.23	-20.26	35.97	74.00	38.03	peak
2	1661.1846	55.54	-18.08	37.46	74.00	36.54	peak
3	2547.1719	55.63	-13.35	42.28	74.00	31.72	peak
4	2660.7401	59.43	-12.75	46.68	74.00	27.32	peak
5	4319.1466	47.29	-4.60	42.69	74.00	31.31	peak
6	7625.8473	44.18	2.72	46.90	74.00	27.10	peak

- Remark: 1. Measurement = Reading Level + Correct Factor.
 2. If Peak Result complies with AV limit, AV Result is deemed to comply with AV limit.
 3. Test setup: RBW: 1 MHz, VBW: 3 MHz, Sweep time: auto.
 4. Peak: Peak detector.
 5. AVG: VBW refer to section 6.1.
 6. For below 6.5GHz part, filter losses were only considered in the spurious frequency bands and the authorized band were not corrected for Band Reject Filter losses.
 The proper operation of the transmitter prior to adding the filter to the measurement chain.
 7. Only the worst case emission was recorded, if it complies with the limit, the other emissions deemed to comply with the limit.
 8. Since non-restricted band peak emissions are less than the average limit, they also comply with the -27dBm/MHz (68.2dBuV/m) limit.

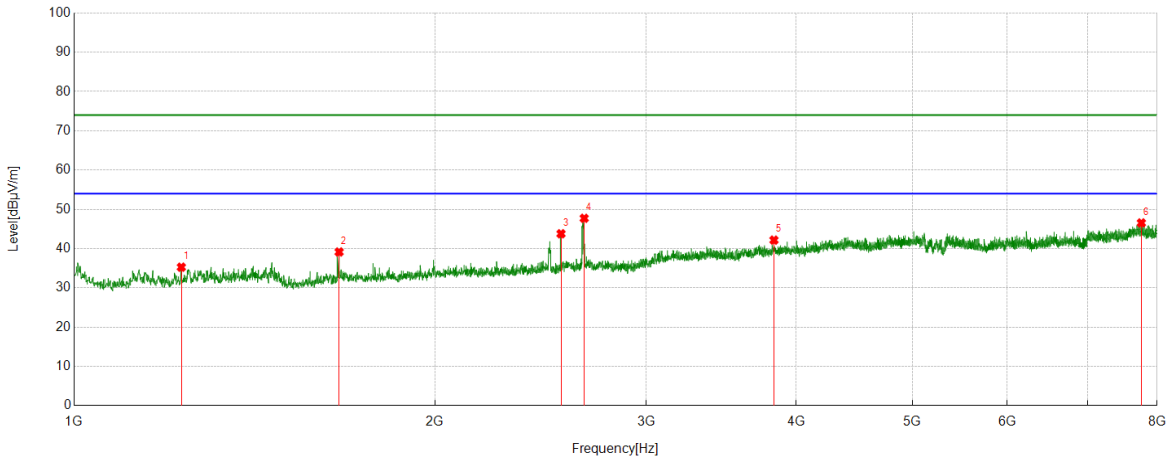
Test Mode	Channel	Polarization	Verdict
11AC20	5200	Vertical	PASS



No.	Frequency	Reading Level	Correct Factor	Result	Limit	Margin	Remark
	(MHz)	(dBuV/m)	(dB)	(dBuV/m)	(dBuV/m)	(dB)	
1	1661.9624	64.92	-18.07	46.85	74.00	27.15	peak
2	1778.6421	62.48	-17.55	44.93	74.00	29.07	peak
3	2548.7276	63.75	-13.37	50.38	74.00	23.62	peak
4	2655.295	65.37	-12.79	52.58	74.00	21.42	peak
5	4253.806	50.06	-5.09	44.97	74.00	29.03	peak
6	7475.7195	45.37	1.89	47.26	74.00	26.74	peak

- Remark: 1. Measurement = Reading Level + Correct Factor.
 2. If Peak Result complies with AV limit, AV Result is deemed to comply with AV limit.
 3. Test setup: RBW: 1 MHz, VBW: 3 MHz, Sweep time: auto.
 4. Peak: Peak detector.
 5. AVG: VBW refer to section 6.1.
 6. For below 6.5GHz part, filter losses were only considered in the spurious frequency bands and the authorized band were not corrected for Band Reject Filter losses.
 The proper operation of the transmitter prior to adding the filter to the measurement chain.
 7. Only the worst case emission was recorded, if it complies with the limit, the other emissions deemed to comply with the limit.
 8. Since non-restricted band peak emissions are less than the average limit, they also comply with the -27dBm/MHz (68.2dBuV/m) limit.

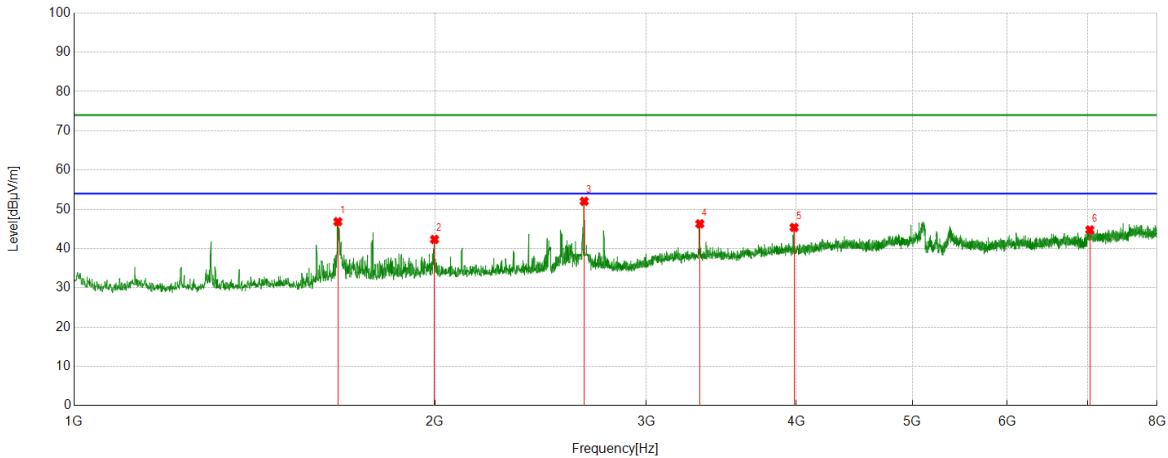
Test Mode	Channel	Polarization	Verdict
11AC20	5240	Horizontal	PASS



No.	Frequency	Reading Level	Correct Factor	Result	Limit	Margin	Remark
	(MHz)	(dBuV/m)	(dB)	(dBuV/m)	(dBuV/m)	(dB)	
1	1228.6921	56.12	-20.85	35.27	74.00	38.73	peak
2	1663.5182	57.18	-18.04	39.14	74.00	34.86	peak
3	2547.1719	57.13	-13.35	43.78	74.00	30.22	peak
4	2663.0737	60.45	-12.73	47.72	74.00	26.28	peak
5	3833.7593	48.92	-6.76	42.16	74.00	31.84	peak
6	7761.9736	43.68	2.86	46.54	74.00	27.46	peak

- Remark:
1. Measurement = Reading Level + Correct Factor.
 2. If Peak Result complies with AV limit, AV Result is deemed to comply with AV limit.
 3. Test setup: RBW: 1 MHz, VBW: 3 MHz, Sweep time: auto.
 4. Peak: Peak detector.
 5. AVG: VBW refer to section 6.1.
 6. For below 6.5GHz part, filter losses were only considered in the spurious frequency bands and the authorized band were not corrected for Band Reject Filter losses.
The proper operation of the transmitter prior to adding the filter to the measurement chain.
 7. Only the worst case emission was recorded, if it complies with the limit, the other emissions deemed to comply with the limit.
 8. Since non-restricted band peak emissions are less than the average limit, they also comply with the -27dBm/MHz (68.2dBuV/m) limit.

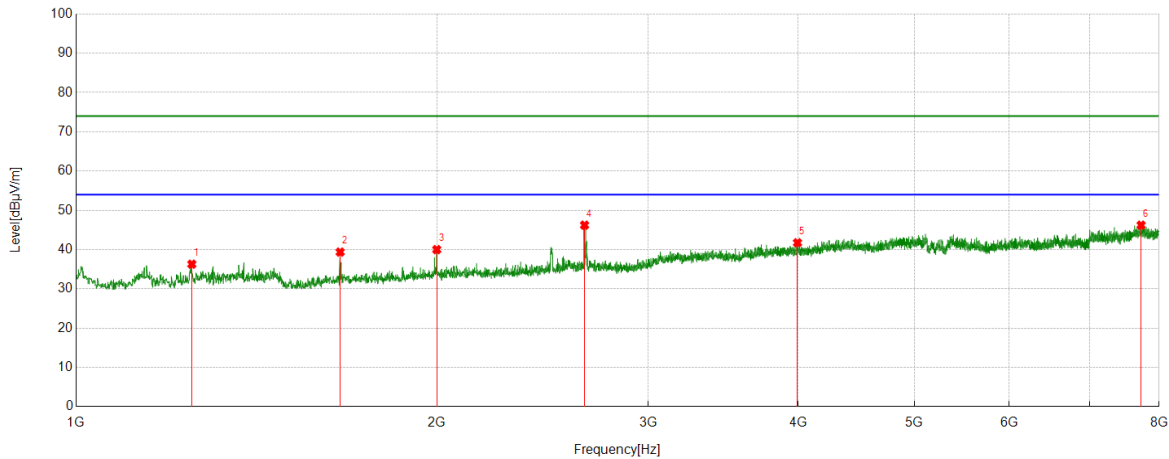
Test Mode	Channel	Polarization	Verdict
11AC20	5240	Vertical	PASS



No.	Frequency	Reading Level	Correct Factor	Result	Limit	Margin	Remark
	(MHz)	(dBuV/m)	(dB)	(dBuV/m)	(dBuV/m)	(dB)	
1	1659.6288	64.95	-18.10	46.85	74.00	27.15	peak
2	1997.9998	58.28	-15.95	42.33	74.00	31.67	peak
3	2663.0737	64.78	-12.73	52.05	74.00	21.95	peak
4	3325.0361	55.62	-9.31	46.31	74.00	27.69	peak
5	3984.665	51.48	-6.09	45.39	74.00	28.61	peak
6	7030.7812	44.07	0.70	44.77	74.00	29.23	peak

- Remark:
1. Measurement = Reading Level + Correct Factor.
 2. If Peak Result complies with AV limit, AV Result is deemed to comply with AV limit.
 3. Test setup: RBW: 1 MHz, VBW: 3 MHz, Sweep time: auto.
 4. Peak: Peak detector.
 5. AVG: VBW refer to section 6.1.
 6. For below 6.5GHz part, filter losses were only considered in the spurious frequency bands and the authorized band were not corrected for Band Reject Filter losses.
The proper operation of the transmitter prior to adding the filter to the measurement chain.
 7. Only the worst case emission was recorded, if it complies with the limit, the other emissions deemed to comply with the limit.
 8. Since non-restricted band peak emissions are less than the average limit, they also comply with the -27dBm/MHz (68.2dBuV/m) limit.

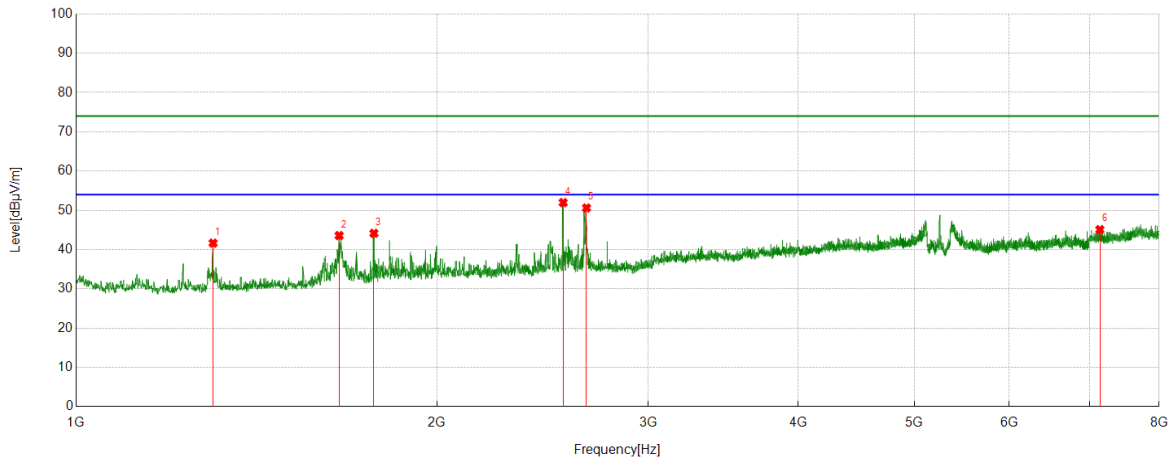
Test Mode	Channel	Polarization	Verdict
11AC20	5260	Horizontal	PASS



No.	Frequency	Reading Level	Correct Factor	Result	Limit	Margin	Remark
	(MHz)	(dBuV/m)	(dB)	(dBuV/m)	(dBuV/m)	(dB)	
1	1248.9165	56.94	-20.65	36.29	74.00	37.71	peak
2	1660.4067	57.46	-18.09	39.37	74.00	34.63	peak
3	1998.7776	55.94	-15.94	40.00	74.00	34.00	peak
4	2654.5172	59.03	-12.80	46.23	74.00	27.77	peak
5	3995.5551	48.05	-6.31	41.74	74.00	32.26	peak
6	7728.5254	43.29	2.93	46.22	74.00	27.78	peak

- Remark: 1. Measurement = Reading Level + Correct Factor.
 2. If Peak Result complies with AV limit, AV Result is deemed to comply with AV limit.
 3. Test setup: RBW: 1 MHz, VBW: 3 MHz, Sweep time: auto.
 4. Peak: Peak detector.
 5. AVG: VBW refer to section 6.1.
 6. For below 6.5GHz part, filter losses were only considered in the spurious frequency bands and the authorized band were not corrected for Band Reject Filter losses.
 The proper operation of the transmitter prior to adding the filter to the measurement chain.
 7. Only the worst case emission was recorded, if it complies with the limit, the other emissions deemed to comply with the limit.
 8. Since non-restricted band peak emissions are less than the average limit, they also comply with the -27dBm/MHz (68.2dBuV/m) limit.

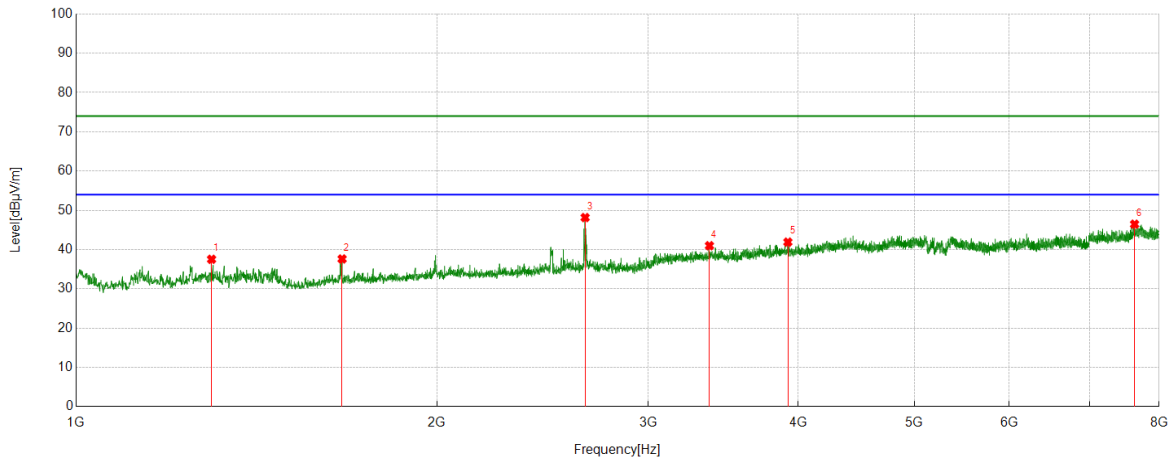
Test Mode	Channel	Polarization	Verdict
11AC20	5260	Vertical	PASS



No.	Frequency	Reading Level	Correct Factor	Result	Limit	Margin	Remark
	(MHz)	(dBuV/m)	(dB)	(dBuV/m)	(dBuV/m)	(dB)	
1	1301.0334	61.92	-20.26	41.66	74.00	32.34	peak
2	1657.2953	61.67	-18.10	43.57	74.00	30.43	peak
3	1771.6413	61.82	-17.67	44.15	74.00	29.85	peak
4	2547.9498	65.32	-13.35	51.97	74.00	22.03	peak
5	2664.6294	63.32	-12.71	50.61	74.00	23.39	peak
6	7140.4601	43.80	1.28	45.08	74.00	28.92	peak

- Remark: 1. Measurement = Reading Level + Correct Factor.
 2. If Peak Result complies with AV limit, AV Result is deemed to comply with AV limit.
 3. Test setup: RBW: 1 MHz, VBW: 3 MHz, Sweep time: auto.
 4. Peak: Peak detector.
 5. AVG: VBW refer to section 6.1.
 6. For below 6.5GHz part, filter losses were only considered in the spurious frequency bands and the authorized band were not corrected for Band Reject Filter losses.
 The proper operation of the transmitter prior to adding the filter to the measurement chain.
 7. Only the worst case emission was recorded, if it complies with the limit, the other emissions deemed to comply with the limit.
 8. Since non-restricted band peak emissions are less than the average limit, they also comply with the -27dBm/MHz (68.2dBuV/m) limit.

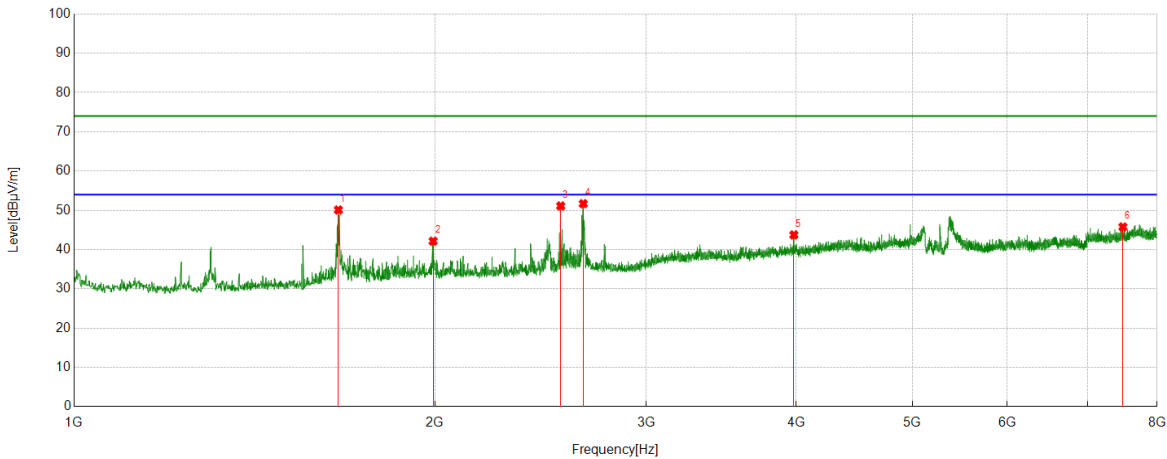
Test Mode	Channel	Polarization	Verdict
11AC20	5280	Horizontal	PASS



No.	Frequency	Reading Level	Correct Factor	Result	Limit	Margin	Remark
	(MHz)	(dBuV/m)	(dB)	(dBuV/m)	(dBuV/m)	(dB)	
1	1297.1441	57.84	-20.31	37.53	74.00	36.47	peak
2	1666.6296	55.61	-17.99	37.62	74.00	36.38	peak
3	2657.6286	60.93	-12.77	48.16	74.00	25.84	peak
4	3374.0416	49.97	-8.98	40.99	74.00	33.01	peak
5	3922.4358	48.64	-6.73	41.91	74.00	32.09	peak
6	7632.0702	43.82	2.65	46.47	74.00	27.53	peak

- Remark: 1. Measurement = Reading Level + Correct Factor.
 2. If Peak Result complies with AV limit, AV Result is deemed to comply with AV limit.
 3. Test setup: RBW: 1 MHz, VBW: 3 MHz, Sweep time: auto.
 4. Peak: Peak detector.
 5. AVG: VBW refer to section 6.1.
 6. For below 6.5GHz part, filter losses were only considered in the spurious frequency bands and the authorized band were not corrected for Band Reject Filter losses.
 The proper operation of the transmitter prior to adding the filter to the measurement chain.
 7. Only the worst case emission was recorded, if it complies with the limit, the other emissions deemed to comply with the limit.
 8. Since non-restricted band peak emissions are less than the average limit, they also comply with the -27dBm/MHz (68.2dBuV/m) limit.

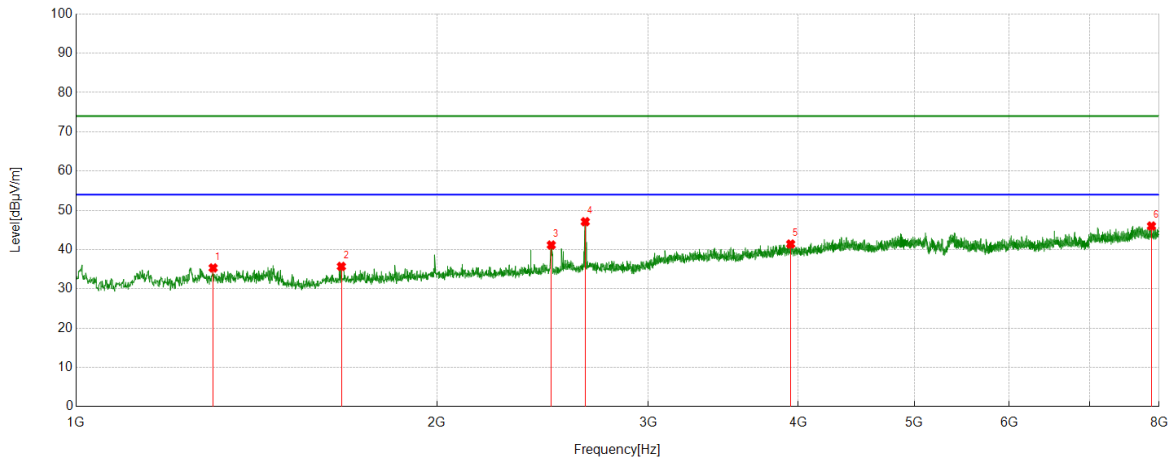
Test Mode	Channel	Polarization	Verdict
11AC20	5280	Vertical	PASS



No.	Frequency	Reading Level	Correct Factor	Result	Limit	Margin	Remark
	(MHz)	(dBuV/m)	(dB)	(dBuV/m)	(dBuV/m)	(dB)	
1	1661.1846	68.18	-18.08	50.10	74.00	23.90	peak
2	1992.5547	58.18	-16.03	42.15	74.00	31.85	peak
3	2545.6162	64.42	-13.31	51.11	74.00	22.89	peak
4	2658.4065	64.46	-12.77	51.69	74.00	22.31	peak
5	3983.1092	49.75	-6.01	43.74	74.00	30.26	peak
6	7492.0547	44.19	1.57	45.76	74.00	28.24	peak

- Remark: 1. Measurement = Reading Level + Correct Factor.
 2. If Peak Result complies with AV limit, AV Result is deemed to comply with AV limit.
 3. Test setup: RBW: 1 MHz, VBW: 3 MHz, Sweep time: auto.
 4. Peak: Peak detector.
 5. AVG: VBW refer to section 6.1.
 6. For below 6.5GHz part, filter losses were only considered in the spurious frequency bands and the authorized band were not corrected for Band Reject Filter losses.
 The proper operation of the transmitter prior to adding the filter to the measurement chain.
 7. Only the worst case emission was recorded, if it complies with the limit, the other emissions deemed to comply with the limit.
 8. Since non-restricted band peak emissions are less than the average limit, they also comply with the -27dBm/MHz (68.2dBuV/m) limit.

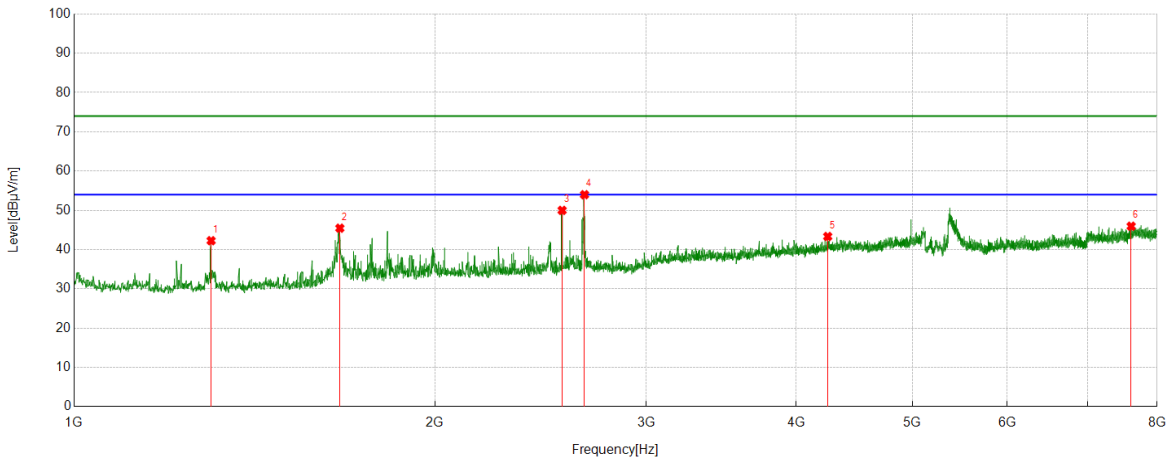
Test Mode	Channel	Polarization	Verdict
11AC20	5320	Horizontal	PASS



No.	Frequency	Reading Level	Correct Factor	Result	Limit	Margin	Remark
	(MHz)	(dBuV/m)	(dB)	(dBuV/m)	(dBuV/m)	(dB)	
1	1301.0334	55.59	-20.26	35.33	74.00	38.67	peak
2	1664.296	53.74	-18.03	35.71	74.00	38.29	peak
3	2490.3878	55.02	-13.86	41.16	74.00	32.84	peak
4	2658.4065	59.87	-12.77	47.10	74.00	26.90	peak
5	3943.4382	47.77	-6.36	41.41	74.00	32.59	peak
6	7884.0982	43.05	2.95	46.00	74.00	28.00	peak

- Remark: 1. Measurement = Reading Level + Correct Factor.
 2. If Peak Result complies with AV limit, AV Result is deemed to comply with AV limit.
 3. Test setup: RBW: 1 MHz, VBW: 3 MHz, Sweep time: auto.
 4. Peak: Peak detector.
 5. AVG: VBW refer to section 6.1.
 6. For below 6.5GHz part, filter losses were only considered in the spurious frequency bands and the authorized band were not corrected for Band Reject Filter losses.
 The proper operation of the transmitter prior to adding the filter to the measurement chain.
 7. Only the worst case emission was recorded, if it complies with the limit, the other emissions deemed to comply with the limit.
 8. Since non-restricted band peak emissions are less than the average limit, they also comply with the -27dBm/MHz (68.2dBuV/m) limit.

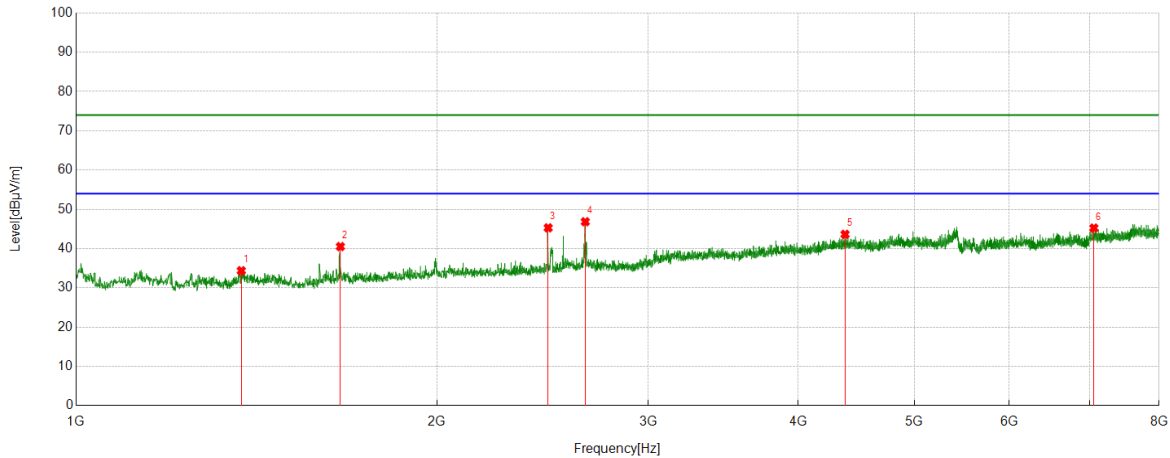
Test Mode	Channel	Polarization	Verdict
11AC20	5320	Vertical	PASS



No.	Frequency	Reading Level	Correct Factor	Result	Limit	Margin	Remark
	(MHz)	(dBuV/m)	(dB)	(dBuV/m)	(dBuV/m)	(dB)	
1	1301.0334	62.53	-20.26	42.27	74.00	31.73	peak
2	1665.8518	63.46	-18.01	45.45	74.00	28.55	peak
3	2552.617	63.37	-13.38	49.99	74.00	24.01	peak
4	2664.6294	66.69	-12.71	53.98	74.00	20.02	peak
5	4250.6945	48.38	-5.04	43.34	74.00	30.66	peak
6	7611.8458	43.55	2.40	45.95	74.00	28.05	peak

- Remark: 1. Measurement = Reading Level + Correct Factor.
 2. If Peak Result complies with AV limit, AV Result is deemed to comply with AV limit.
 3. Test setup: RBW: 1 MHz, VBW: 3 MHz, Sweep time: auto.
 4. Peak: Peak detector.
 5. AVG: VBW refer to section 6.1.
 6. For below 6.5GHz part, filter losses were only considered in the spurious frequency bands and the authorized band were not corrected for Band Reject Filter losses.
 The proper operation of the transmitter prior to adding the filter to the measurement chain.
 7. Only the worst case emission was recorded, if it complies with the limit, the other emissions deemed to comply with the limit.
 8. Since non-restricted band peak emissions are less than the average limit, they also comply with the -27dBm/MHz (68.2dBuV/m) limit.

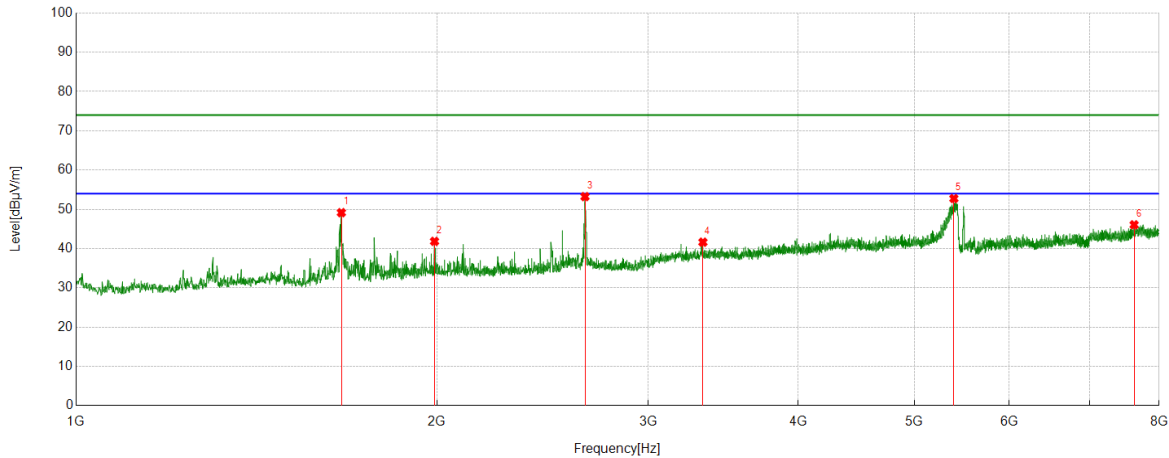
Test Mode	Channel	Polarization	Verdict
11AC20	5500	Horizontal	PASS



No.	Frequency	Reading Level	Correct Factor	Result	Limit	Margin	Remark
	(MHz)	(dBuV/m)	(dB)	(dBuV/m)	(dBuV/m)	(dB)	
1	1373.3748	54.62	-20.25	34.37	74.00	39.63	peak
2	1661.1846	58.58	-18.06	40.52	74.00	33.48	peak
3	2475.6084	59.21	-13.92	45.29	74.00	28.71	peak
4	2658.4065	59.35	-12.51	46.84	74.00	27.16	peak
5	4377.4864	48.50	-4.87	43.63	74.00	30.37	peak
6	7058.7843	44.17	1.05	45.22	74.00	28.78	peak

- Remark: 1. Measurement = Reading Level + Correct Factor.
 2. If Peak Result complies with AV limit, AV Result is deemed to comply with AV limit.
 3. Test setup: RBW: 1 MHz, VBW: 3 MHz, Sweep time: auto.
 4. Peak: Peak detector.
 5. AVG: VBW refer to section 6.1.
 6. For below 6.5GHz part, filter losses were only considered in the spurious frequency bands and the authorized band were not corrected for Band Reject Filter losses.
 The proper operation of the transmitter prior to adding the filter to the measurement chain.
 7. Only the worst case emission was recorded, if it complies with the limit, the other emissions deemed to comply with the limit.
 8. Since non-restricted band peak emissions are less than the average limit, they also comply with the -27dBm/MHz (68.2dBuV/m) limit.

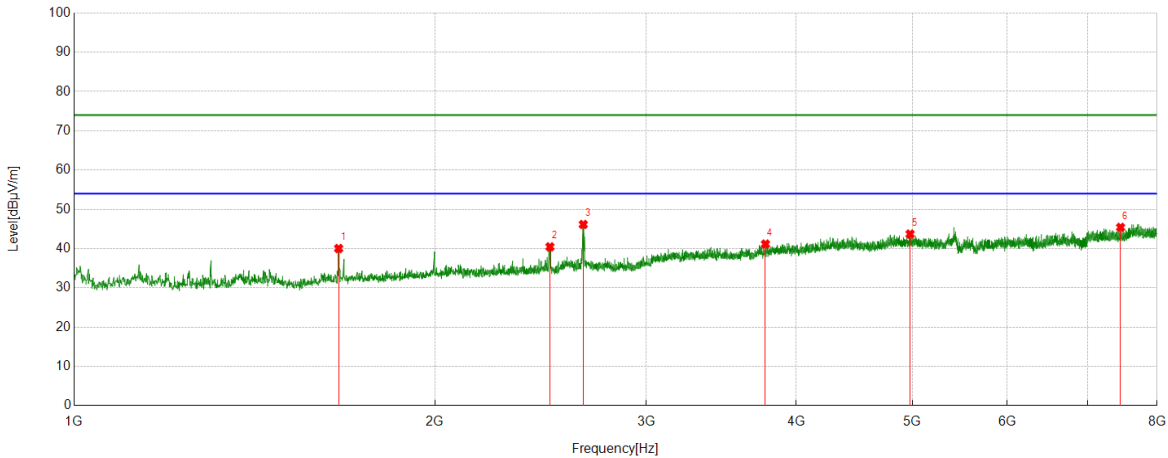
Test Mode	Channel	Polarization	Verdict
11AC20	5500	Vertical	PASS



No.	Frequency	Reading Level	Correct Factor	Result	Limit	Margin	Remark
	(MHz)	(dBuV/m)	(dB)	(dBuV/m)	(dBuV/m)	(dB)	
1	1664.296	67.16	-18.01	49.15	74.00	24.85	peak
2	1990.2211	57.84	-16.00	41.84	74.00	32.16	peak
3	2656.8508	65.76	-12.52	53.24	74.00	20.76	peak
4	3332.0369	50.86	-9.23	41.63	74.00	32.37	peak
5	5394.9328	54.93	-2.19	52.74	74.00	21.26	peak
6	7625.0695	43.61	2.45	46.06	74.00	27.94	peak

- Remark: 1. Measurement = Reading Level + Correct Factor.
 2. If Peak Result complies with AV limit, AV Result is deemed to comply with AV limit.
 3. Test setup: RBW: 1 MHz, VBW: 3 MHz, Sweep time: auto.
 4. Peak: Peak detector.
 5. AVG: VBW refer to section 6.1.
 6. For below 6.5GHz part, filter losses were only considered in the spurious frequency bands and the authorized band were not corrected for Band Reject Filter losses.
 The proper operation of the transmitter prior to adding the filter to the measurement chain.
 7. Only the worst case emission was recorded, if it complies with the limit, the other emissions deemed to comply with the limit.
 8. Since non-restricted band peak emissions are less than the average limit, they also comply with the -27dBm/MHz (68.2dBuV/m) limit.

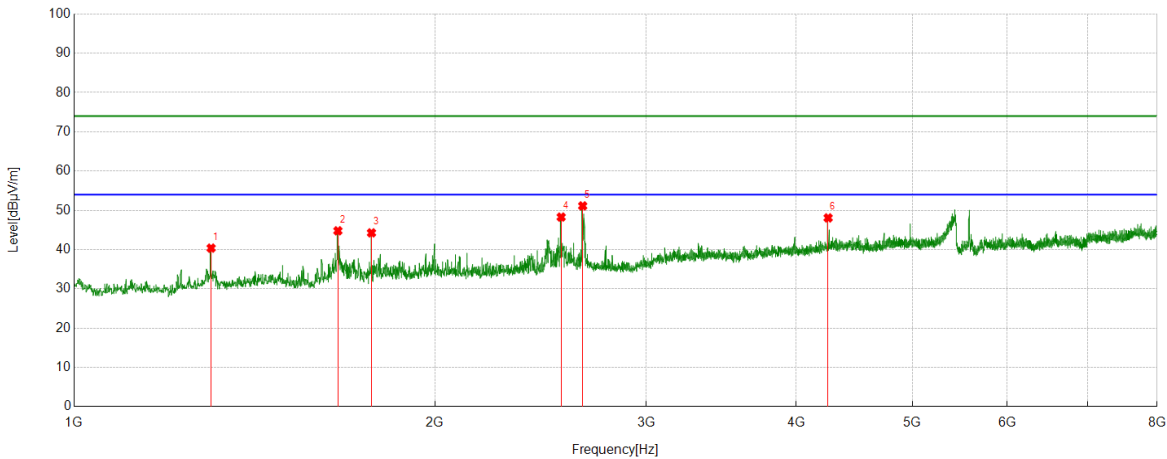
Test Mode	Channel	Polarization	Verdict
11AC20	5580	Horizontal	PASS



No.	Frequency	Reading Level	Correct Factor	Result	Limit	Margin	Remark
	(MHz)	(dBuV/m)	(dB)	(dBuV/m)	(dBuV/m)	(dB)	
1	1661.9624	58.08	-18.05	40.03	74.00	33.97	peak
2	2493.4993	54.36	-13.91	40.45	74.00	33.55	peak
3	2658.4065	58.66	-12.51	46.15	74.00	27.85	peak
4	3771.5302	48.42	-7.27	41.15	74.00	32.85	peak
5	4978.7754	46.44	-2.73	43.71	74.00	30.29	peak
6	7458.6065	43.71	1.70	45.41	74.00	28.59	peak

- Remark: 1. Measurement = Reading Level + Correct Factor.
 2. If Peak Result complies with AV limit, AV Result is deemed to comply with AV limit.
 3. Test setup: RBW: 1 MHz, VBW: 3 MHz, Sweep time: auto.
 4. Peak: Peak detector.
 5. AVG: VBW refer to section 6.1.
 6. For below 6.5GHz part, filter losses were only considered in the spurious frequency bands and the authorized band were not corrected for Band Reject Filter losses.
 The proper operation of the transmitter prior to adding the filter to the measurement chain.
 7. Only the worst case emission was recorded, if it complies with the limit, the other emissions deemed to comply with the limit.
 8. Since non-restricted band peak emissions are less than the average limit, they also comply with the -27dBm/MHz (68.2dBuV/m) limit.

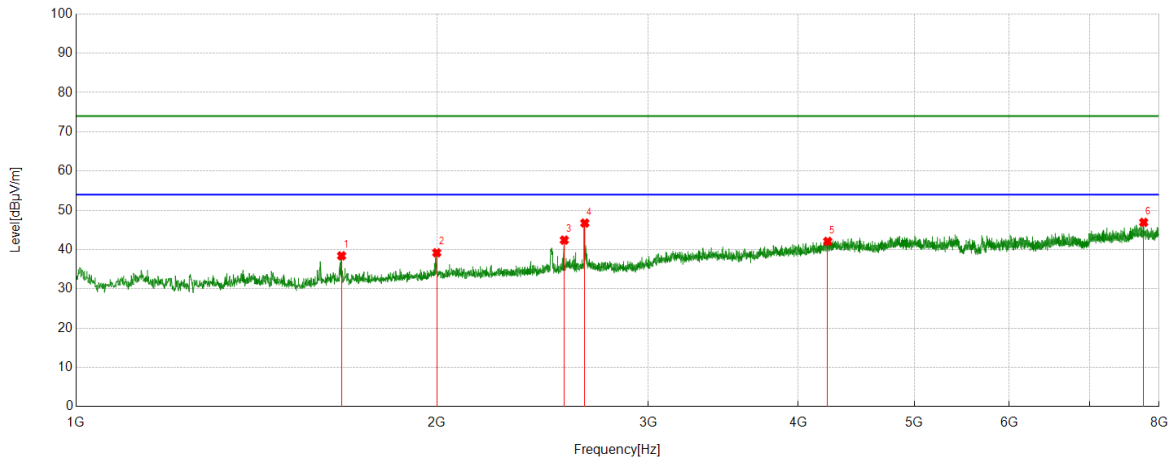
Test Mode	Channel	Polarization	Verdict
11AC20	5580	Vertical	PASS



No.	Frequency	Reading Level	Correct Factor	Result	Limit	Margin	Remark
	(MHz)	(dBuV/m)	(dB)	(dBuV/m)	(dBuV/m)	(dB)	
1	1301.0334	60.56	-20.18	40.38	74.00	33.62	peak
2	1659.6288	62.87	-18.08	44.79	74.00	29.21	peak
3	1770.0856	61.86	-17.60	44.26	74.00	29.74	peak
4	2547.9498	61.18	-12.90	48.28	74.00	25.72	peak
5	2655.295	63.68	-12.55	51.13	74.00	22.87	peak
6	4253.806	53.12	-5.05	48.07	74.00	25.93	peak

- Remark: 1. Measurement = Reading Level + Correct Factor.
 2. If Peak Result complies with AV limit, AV Result is deemed to comply with AV limit.
 3. Test setup: RBW: 1 MHz, VBW: 3 MHz, Sweep time: auto.
 4. Peak: Peak detector.
 5. AVG: VBW refer to section 6.1.
 6. For below 6.5GHz part, filter losses were only considered in the spurious frequency bands and the authorized band were not corrected for Band Reject Filter losses.
 The proper operation of the transmitter prior to adding the filter to the measurement chain.
 7. Only the worst case emission was recorded, if it complies with the limit, the other emissions deemed to comply with the limit.
 8. Since non-restricted band peak emissions are less than the average limit, they also comply with the -27dBm/MHz (68.2dBuV/m) limit.

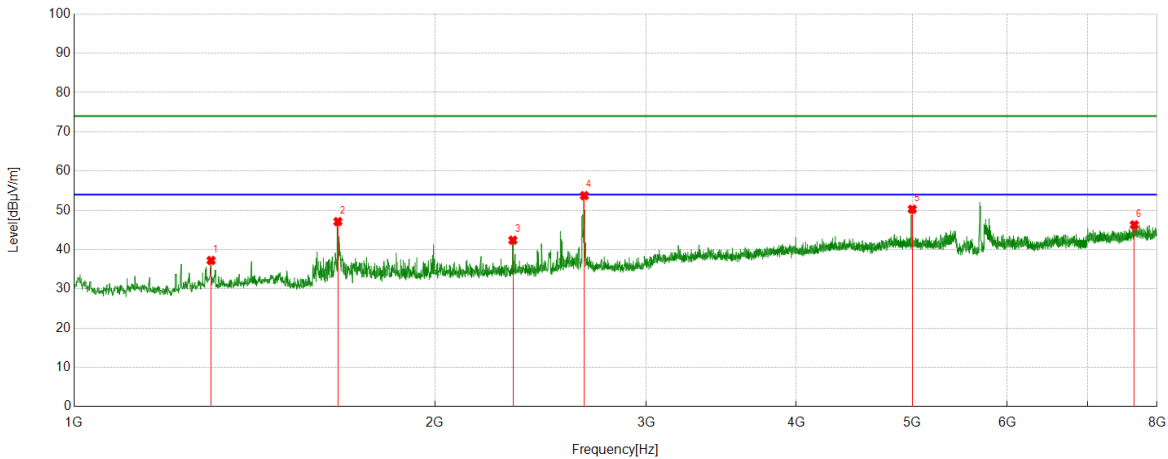
Test Mode	Channel	Polarization	Verdict
11AC20	5700	Horizontal	PASS



No.	Frequency	Reading Level	Correct Factor	Result	Limit	Margin	Remark
	(MHz)	(dBuV/m)	(dB)	(dBuV/m)	(dBuV/m)	(dB)	
1	1665.0739	56.41	-17.99	38.42	74.00	35.58	peak
2	1998.7776	55.00	-15.80	39.20	74.00	34.80	peak
3	2553.3948	55.31	-12.89	42.42	74.00	31.58	peak
4	2656.0729	59.29	-12.54	46.75	74.00	27.25	peak
5	4234.3594	47.28	-5.20	42.08	74.00	31.92	peak
6	7767.4186	44.07	2.86	46.93	74.00	27.07	peak

- Remark: 1. Measurement = Reading Level + Correct Factor.
 2. If Peak Result complies with AV limit, AV Result is deemed to comply with AV limit.
 3. Test setup: RBW: 1 MHz, VBW: 3 MHz, Sweep time: auto.
 4. Peak: Peak detector.
 5. AVG: VBW refer to section 6.1.
 6. For below 6.5GHz part, filter losses were only considered in the spurious frequency bands and the authorized band were not corrected for Band Reject Filter losses.
 The proper operation of the transmitter prior to adding the filter to the measurement chain.
 7. Only the worst case emission was recorded, if it complies with the limit, the other emissions deemed to comply with the limit.
 8. Since non-restricted band peak emissions are less than the average limit, they also comply with the -27dBm/MHz (68.2dBuV/m) limit.

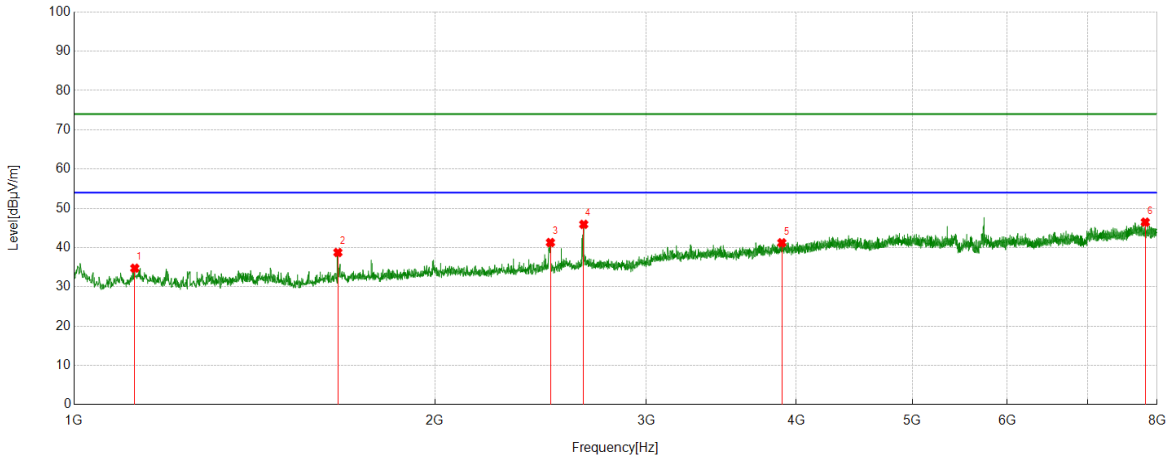
Test Mode	Channel	Polarization	Verdict
11AC20	5700	Vertical	PASS



No.	Frequency	Reading Level	Correct Factor	Result	Limit	Margin	Remark
	(MHz)	(dBuV/m)	(dB)	(dBuV/m)	(dBuV/m)	(dB)	
1	1301.0334	57.42	-20.18	37.24	74.00	36.76	peak
2	1659.6288	65.21	-18.08	47.13	74.00	26.87	peak
3	2322.3692	57.13	-14.73	42.40	74.00	31.60	peak
4	2663.8515	66.18	-12.45	53.73	74.00	20.27	peak
5	4999.7778	52.81	-2.53	50.28	74.00	23.72	peak
6	7657.7397	44.16	2.14	46.30	74.00	27.70	peak

- Remark: 1. Measurement = Reading Level + Correct Factor.
 2. If Peak Result complies with AV limit, AV Result is deemed to comply with AV limit.
 3. Test setup: RBW: 1 MHz, VBW: 3 MHz, Sweep time: auto.
 4. Peak: Peak detector.
 5. AVG: VBW refer to section 6.1.
 6. For below 6.5GHz part, filter losses were only considered in the spurious frequency bands and the authorized band were not corrected for Band Reject Filter losses.
 The proper operation of the transmitter prior to adding the filter to the measurement chain.
 7. Only the worst case emission was recorded, if it complies with the limit, the other emissions deemed to comply with the limit.
 8. Since non-restricted band peak emissions are less than the average limit, they also comply with the -27dBm/MHz (68.2dBuV/m) limit.

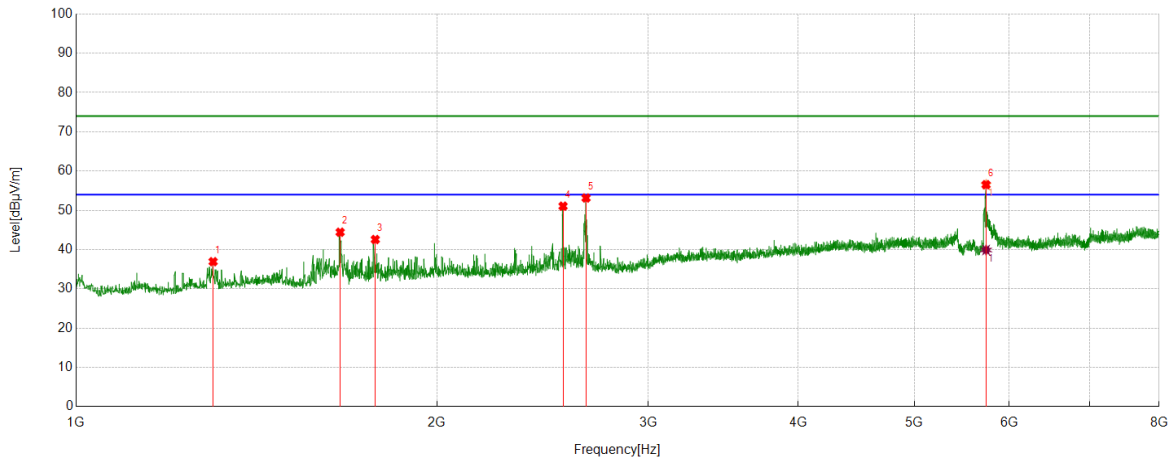
Test Mode	Channel	Polarization	Verdict
11AC20	5720	Horizontal	PASS



No.	Frequency	Reading Level	Correct Factor	Result	Limit	Margin	Remark
	(MHz)	(dBuV/m)	(dB)	(dBuV/m)	(dBuV/m)	(dB)	
1	1123.6804	55.89	-21.15	34.74	74.00	39.26	peak
2	1659.6288	56.83	-18.08	38.75	74.00	35.25	peak
3	2495.8329	55.18	-13.89	41.29	74.00	32.71	peak
4	2660.7401	58.40	-12.48	45.92	74.00	28.08	peak
5	3892.0991	47.81	-6.59	41.22	74.00	32.78	peak
6	7821.0912	44.20	2.28	46.48	74.00	27.52	peak

- Remark: 1. Measurement = Reading Level + Correct Factor.
 2. If Peak Result complies with AV limit, AV Result is deemed to comply with AV limit.
 3. Test setup: RBW: 1 MHz, VBW: 3 MHz, Sweep time: auto.
 4. Peak: Peak detector.
 5. AVG: VBW refer to section 6.1.
 6. For below 6.5GHz part, filter losses were only considered in the spurious frequency bands and the authorized band were not corrected for Band Reject Filter losses.
 The proper operation of the transmitter prior to adding the filter to the measurement chain.
 7. Only the worst case emission was recorded, if it complies with the limit, the other emissions deemed to comply with the limit.
 8. Since non-restricted band peak emissions are less than the average limit, they also comply with the -27dBm/MHz (68.2dBuV/m) limit.

Test Mode	Channel	Polarization	Verdict
11AC20	5720	Vertical	PASS



PK result:

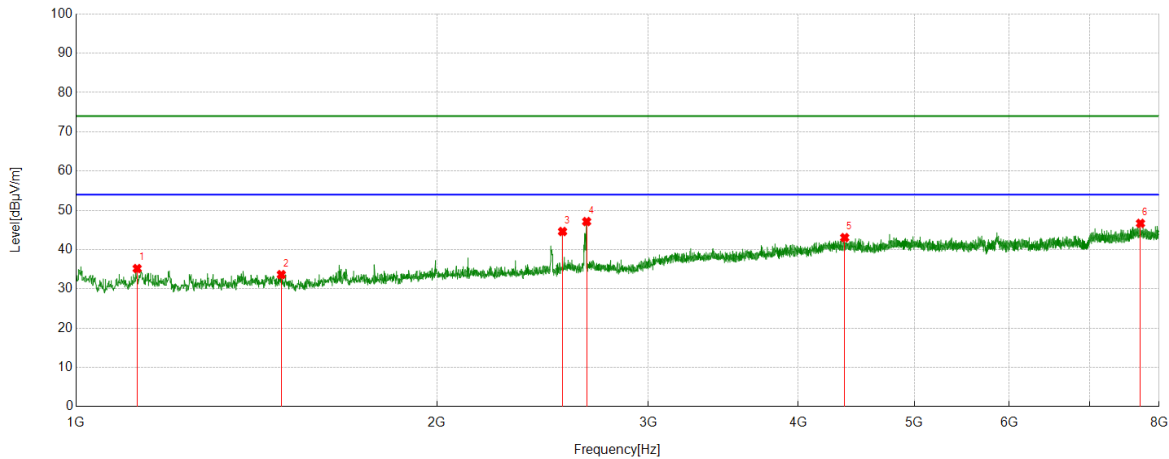
No.	Frequency	Reading Level	Correct Factor	Result	Limit	Margin	Remark
	(MHz)	(dBuV/m)	(dB)	(dBuV/m)	(dBuV/m)	(dB)	
1	1301.0334	57.11	-20.18	36.93	74.00	37.07	peak
2	1660.4067	62.50	-18.07	44.43	74.00	29.57	peak
3	1776.3085	60.07	-17.50	42.57	74.00	31.43	peak
4	2547.1719	63.96	-12.90	51.06	74.00	22.94	peak
5	2662.2958	65.61	-12.47	53.14	74.00	20.86	peak
6	5738.7488	57.69	-1.16	56.53	74.00	17.47	peak

AV result:

No.	Frequency	Reading Level	Correct Factor	Result	Limit	Margin	Remark
	(MHz)	(dBuV/m)	(dB)	(dBuV/m)	(dBuV/m)	(dB)	
1	5738.7488	41.06	-1.16	39.90	54.00	14.10	AV

- Remark:
1. Measurement = Reading Level + Correct Factor.
 2. If Peak Result complies with AV limit, AV Result is deemed to comply with AV limit.
 3. Test setup: RBW: 1 MHz, VBW: 3 MHz, Sweep time: auto.
 4. Peak: Peak detector.
 5. AVG: VBW refer to section 6.1.
 6. For below 6.5GHz part, filter losses were only considered in the spurious frequency bands and the authorized band were not corrected for Band Reject Filter losses.
The proper operation of the transmitter prior to adding the filter to the measurement chain.
 7. Only the worst case emission was recorded, if it complies with the limit, the other emissions deemed to comply with the limit.
 8. Since non-restricted band peak emissions are less than the average limit, they also comply with the -27dBm/MHz (68.2dBuV/m) limit.

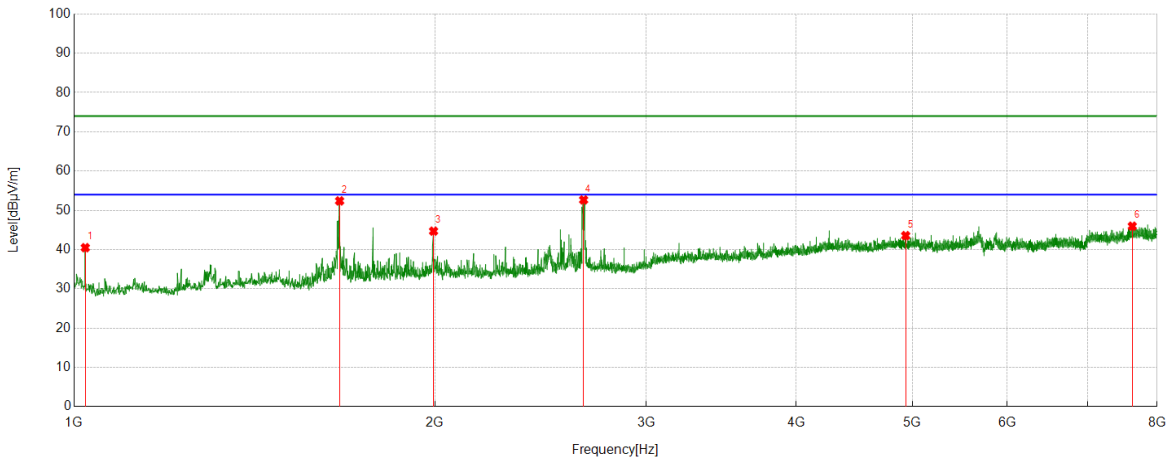
Test Mode	Channel	Polarization	Verdict
11AC20	5745	Horizontal	PASS



No.	Frequency	Reading Level	Correct Factor	Result	Limit	Margin	Remark
	(MHz)	(dBuV/m)	(dB)	(dBuV/m)	(dBuV/m)	(dB)	
1	1124.4583	56.34	-21.17	35.17	74.00	38.83	peak
2	1483.0537	53.25	-19.62	33.63	74.00	40.37	peak
3	2544.8383	57.99	-13.39	44.60	74.00	29.40	peak
4	2665.4073	60.03	-12.89	47.14	74.00	26.86	peak
5	4374.3749	47.93	-4.88	43.05	74.00	30.95	peak
6	7719.191	44.42	2.26	46.68	74.00	27.32	peak

- Remark: 1. Measurement = Reading Level + Correct Factor.
 2. If Peak Result complies with AV limit, AV Result is deemed to comply with AV limit.
 3. Test setup: RBW: 1 MHz, VBW: 3 MHz, Sweep time: auto.
 4. Peak: Peak detector.
 5. AVG: VBW refer to section 6.1.
 6. For below 6.5GHz part, filter losses were only considered in the spurious frequency bands and the authorized band were not corrected for Band Reject Filter losses.
 The proper operation of the transmitter prior to adding the filter to the measurement chain.
 7. Only the worst case emission was recorded, if it complies with the limit, the other emissions deemed to comply with the limit.
 8. Since non-restricted band peak emissions are less than the average limit, they also comply with the -27dBm/MHz (68.2dBuV/m) limit.

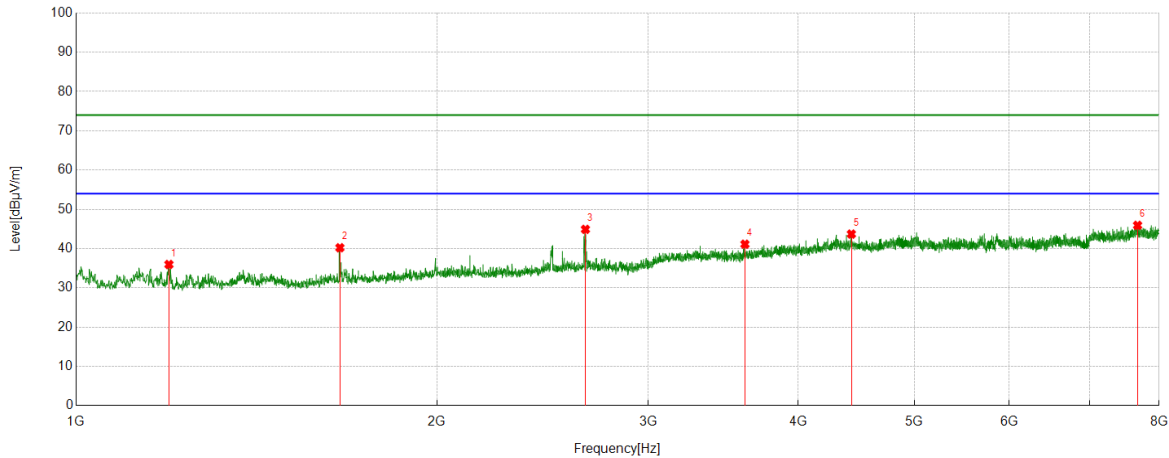
Test Mode	Channel	Polarization	Verdict
11AC20	5745	Vertical	PASS



No.	Frequency	Reading Level	Correct Factor	Result	Limit	Margin	Remark
	(MHz)	(dBuV/m)	(dB)	(dBuV/m)	(dBuV/m)	(dB)	
1	1021.7802	62.12	-21.63	40.49	74.00	33.51	peak
2	1665.0739	70.36	-17.96	52.40	74.00	21.60	peak
3	1994.1105	60.70	-16.00	44.70	74.00	29.30	peak
4	2659.9622	65.56	-12.90	52.66	74.00	21.34	peak
5	4936.7708	46.69	-3.13	43.56	74.00	30.44	peak
6	7628.1809	43.42	2.55	45.97	74.00	28.03	peak

- Remark: 1. Measurement = Reading Level + Correct Factor.
 2. If Peak Result complies with AV limit, AV Result is deemed to comply with AV limit.
 3. Test setup: RBW: 1 MHz, VBW: 3 MHz, Sweep time: auto.
 4. Peak: Peak detector.
 5. AVG: VBW refer to section 6.1.
 6. For below 6.5GHz part, filter losses were only considered in the spurious frequency bands and the authorized band were not corrected for Band Reject Filter losses.
 The proper operation of the transmitter prior to adding the filter to the measurement chain.
 7. Only the worst case emission was recorded, if it complies with the limit, the other emissions deemed to comply with the limit.
 8. Since non-restricted band peak emissions are less than the average limit, they also comply with the -27dBm/MHz (68.2dBuV/m) limit.

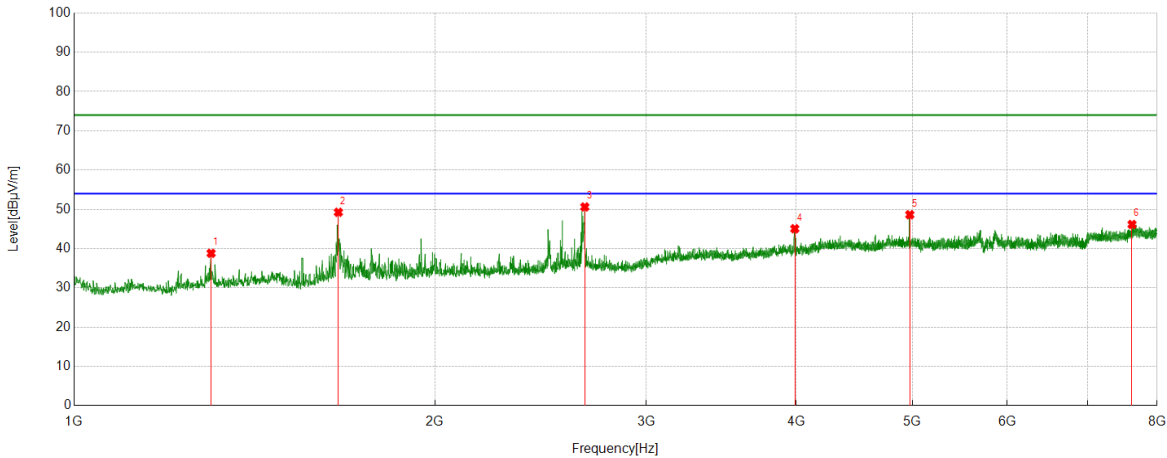
Test Mode	Channel	Polarization	Verdict
11AC20	5785	Horizontal	PASS



No.	Frequency	Reading Level	Correct Factor	Result	Limit	Margin	Remark
	(MHz)	(dBuV/m)	(dB)	(dBuV/m)	(dBuV/m)	(dB)	
1	1195.2439	57.56	-21.60	35.96	74.00	38.04	peak
2	1659.6288	58.29	-18.07	40.22	74.00	33.78	peak
3	2659.1844	57.79	-12.89	44.90	74.00	29.10	peak
4	3612.068	49.31	-8.19	41.12	74.00	32.88	peak
5	4431.159	48.13	-4.43	43.70	74.00	30.30	peak
6	7676.4085	43.66	2.26	45.92	74.00	28.08	peak

- Remark: 1. Measurement = Reading Level + Correct Factor.
 2. If Peak Result complies with AV limit, AV Result is deemed to comply with AV limit.
 3. Test setup: RBW: 1 MHz, VBW: 3 MHz, Sweep time: auto.
 4. Peak: Peak detector.
 5. AVG: VBW refer to section 6.1.
 6. For below 6.5GHz part, filter losses were only considered in the spurious frequency bands and the authorized band were not corrected for Band Reject Filter losses.
 The proper operation of the transmitter prior to adding the filter to the measurement chain.
 7. Only the worst case emission was recorded, if it complies with the limit, the other emissions deemed to comply with the limit.
 8. Since non-restricted band peak emissions are less than the average limit, they also comply with the -27dBm/MHz (68.2dBuV/m) limit.

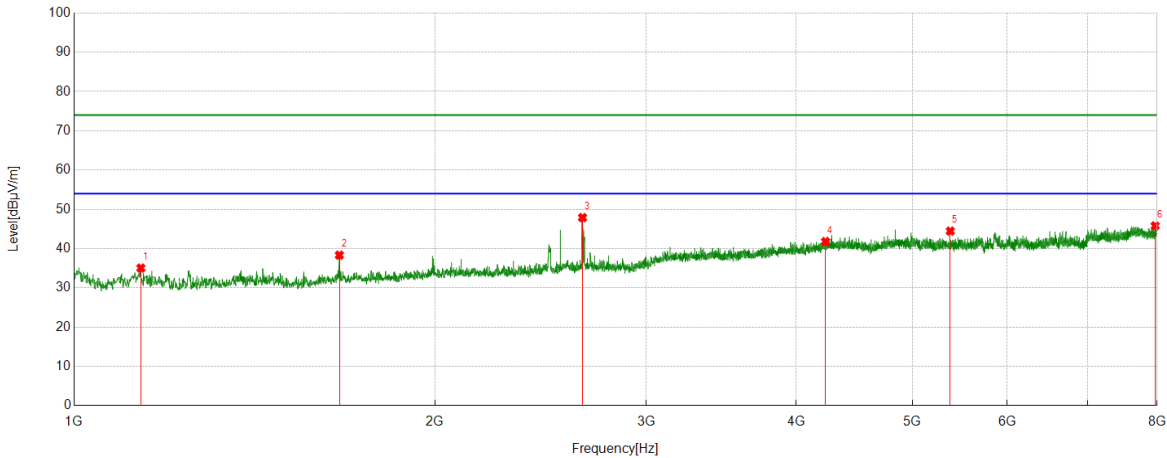
Test Mode	Channel	Polarization	Verdict
11AC20	5785	Vertical	PASS



No.	Frequency	Reading Level	Correct Factor	Result	Limit	Margin	Remark
	(MHz)	(dBuV/m)	(dB)	(dBuV/m)	(dBuV/m)	(dB)	
1	1301.0334	58.99	-20.18	38.81	74.00	35.19	peak
2	1661.1846	67.29	-18.04	49.25	74.00	24.75	peak
3	2666.1851	63.50	-12.89	50.61	74.00	23.39	peak
4	3990.11	51.39	-6.34	45.05	74.00	28.95	peak
5	4976.4418	51.73	-3.10	48.63	74.00	25.37	peak
6	7624.2916	43.57	2.58	46.15	74.00	27.85	peak

- Remark: 1. Measurement = Reading Level + Correct Factor.
 2. If Peak Result complies with AV limit, AV Result is deemed to comply with AV limit.
 3. Test setup: RBW: 1 MHz, VBW: 3 MHz, Sweep time: auto.
 4. Peak: Peak detector.
 5. AVG: VBW refer to section 6.1.
 6. For below 6.5GHz part, filter losses were only considered in the spurious frequency bands and the authorized band were not corrected for Band Reject Filter losses.
 The proper operation of the transmitter prior to adding the filter to the measurement chain.
 7. Only the worst case emission was recorded, if it complies with the limit, the other emissions deemed to comply with the limit.
 8. Since non-restricted band peak emissions are less than the average limit, they also comply with the -27dBm/MHz (68.2dBuV/m) limit.

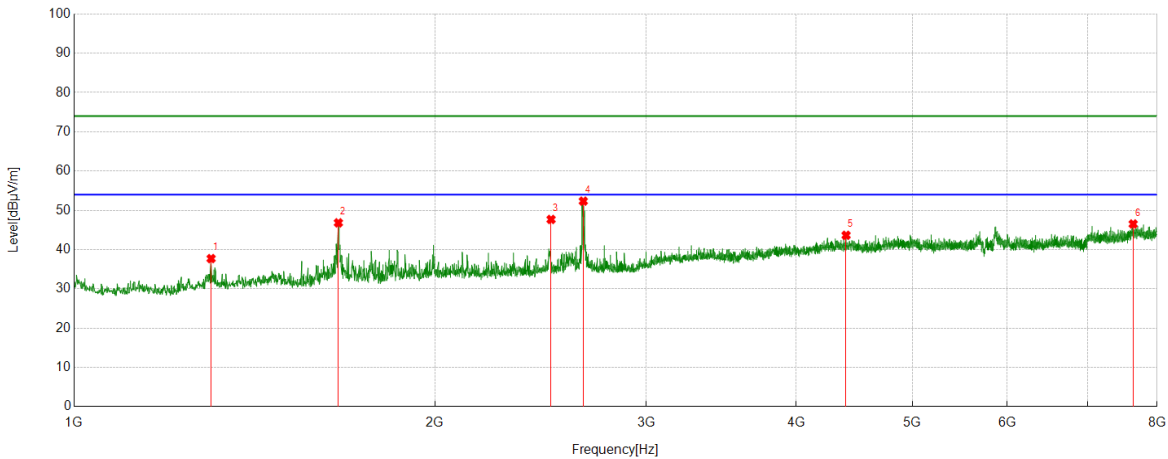
Test Mode	Channel	Polarization	Verdict
11AC20	5825	Horizontal	PASS



No.	Frequency	Reading Level	Correct Factor	Result	Limit	Margin	Remark
	(MHz)	(dBuV/m)	(dB)	(dBuV/m)	(dBuV/m)	(dB)	
1	1136.9041	56.20	-21.16	35.04	74.00	38.96	peak
2	1664.296	56.31	-17.98	38.33	74.00	35.67	peak
3	2654.5172	60.77	-12.87	47.90	74.00	26.10	peak
4	4232.8036	46.89	-5.11	41.78	74.00	32.22	peak
5	5378.5976	47.33	-2.87	44.46	74.00	29.54	peak
6	7971.219	43.43	2.36	45.79	74.00	28.21	peak

- Remark: 1. Measurement = Reading Level + Correct Factor.
 2. If Peak Result complies with AV limit, AV Result is deemed to comply with AV limit.
 3. Test setup: RBW: 1 MHz, VBW: 3 MHz, Sweep time: auto.
 4. Peak: Peak detector.
 5. AVG: VBW refer to section 6.1.
 6. For below 6.5GHz part, filter losses were only considered in the spurious frequency bands and the authorized band were not corrected for Band Reject Filter losses.
 The proper operation of the transmitter prior to adding the filter to the measurement chain.
 7. Only the worst case emission was recorded, if it complies with the limit, the other emissions deemed to comply with the limit.
 8. Since non-restricted band peak emissions are less than the average limit, they also comply with the -27dBm/MHz (68.2dBuV/m) limit.

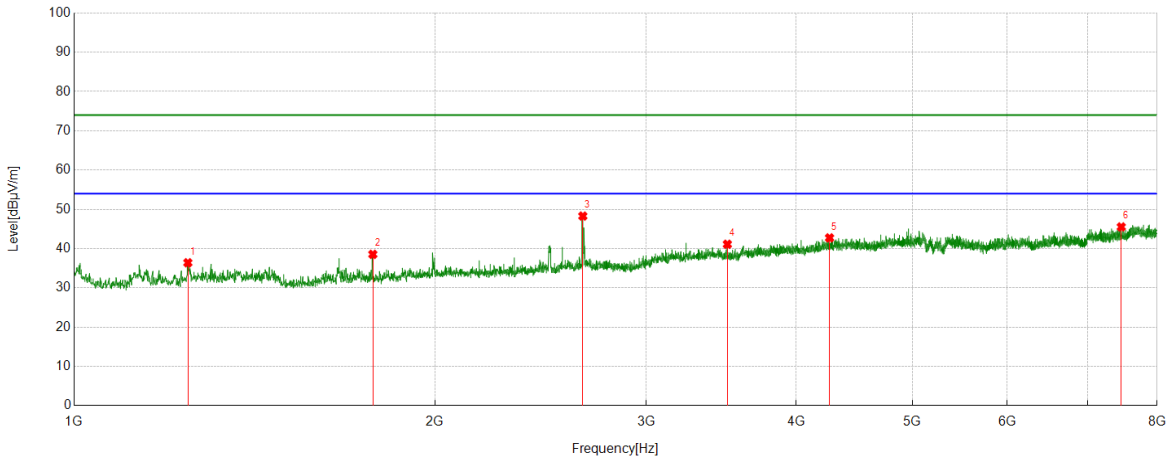
Test Mode	Channel	Polarization	Verdict
11AC20	5825	Vertical	PASS



No.	Frequency	Reading Level	Correct Factor	Result	Limit	Margin	Remark
	(MHz)	(dBuV/m)	(dB)	(dBuV/m)	(dBuV/m)	(dB)	
1	1301.0334	57.89	-20.18	37.71	74.00	36.29	peak
2	1661.1846	64.86	-18.04	46.82	74.00	27.18	peak
3	2498.9443	61.49	-13.81	47.68	74.00	26.32	peak
4	2658.4065	65.24	-12.90	52.34	74.00	21.66	peak
5	4403.1559	47.95	-4.31	43.64	74.00	30.36	peak
6	7640.6267	44.08	2.44	46.52	74.00	27.48	peak

- Remark: 1. Measurement = Reading Level + Correct Factor.
 2. If Peak Result complies with AV limit, AV Result is deemed to comply with AV limit.
 3. Test setup: RBW: 1 MHz, VBW: 3 MHz, Sweep time: auto.
 4. Peak: Peak detector.
 5. AVG: VBW refer to section 6.1.
 6. For below 6.5GHz part, filter losses were only considered in the spurious frequency bands and the authorized band were not corrected for Band Reject Filter losses.
 The proper operation of the transmitter prior to adding the filter to the measurement chain.
 7. Only the worst case emission was recorded, if it complies with the limit, the other emissions deemed to comply with the limit.
 8. Since non-restricted band peak emissions are less than the average limit, they also comply with the -27dBm/MHz (68.2dBuV/m) limit.

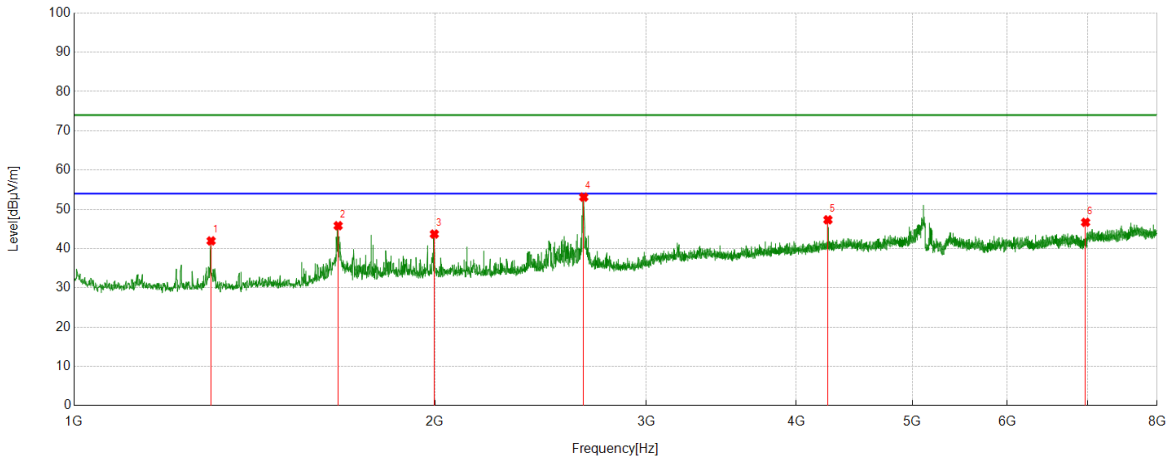
Test Mode	Channel	Polarization	Verdict
11AC40	5190	Horizontal	PASS



No.	Frequency	Reading Level	Correct Factor	Result	Limit	Margin	Remark
	(MHz)	(dBuV/m)	(dB)	(dBuV/m)	(dBuV/m)	(dB)	
1	1244.2494	57.12	-20.72	36.40	74.00	37.60	peak
2	1774.7528	56.16	-17.62	38.54	74.00	35.46	peak
3	2656.0729	61.07	-12.79	48.28	74.00	25.72	peak
4	3505.5006	50.01	-8.90	41.11	74.00	32.89	peak
5	4265.4739	47.64	-4.91	42.73	74.00	31.27	peak
6	7468.7187	43.57	1.95	45.52	74.00	28.48	peak

- Remark: 1. Measurement = Reading Level + Correct Factor.
 2. If Peak Result complies with AV limit, AV Result is deemed to comply with AV limit.
 3. Test setup: RBW: 1 MHz, VBW: 3 MHz, Sweep time: auto.
 4. Peak: Peak detector.
 5. AVG: VBW refer to section 6.1.
 6. For below 6.5GHz part, filter losses were only considered in the spurious frequency bands and the authorized band were not corrected for Band Reject Filter losses.
 The proper operation of the transmitter prior to adding the filter to the measurement chain.
 7. Only the worst case emission was recorded, if it complies with the limit, the other emissions deemed to comply with the limit.
 8. Since non-restricted band peak emissions are less than the average limit, they also comply with the -27dBm/MHz (68.2dBuV/m) limit.

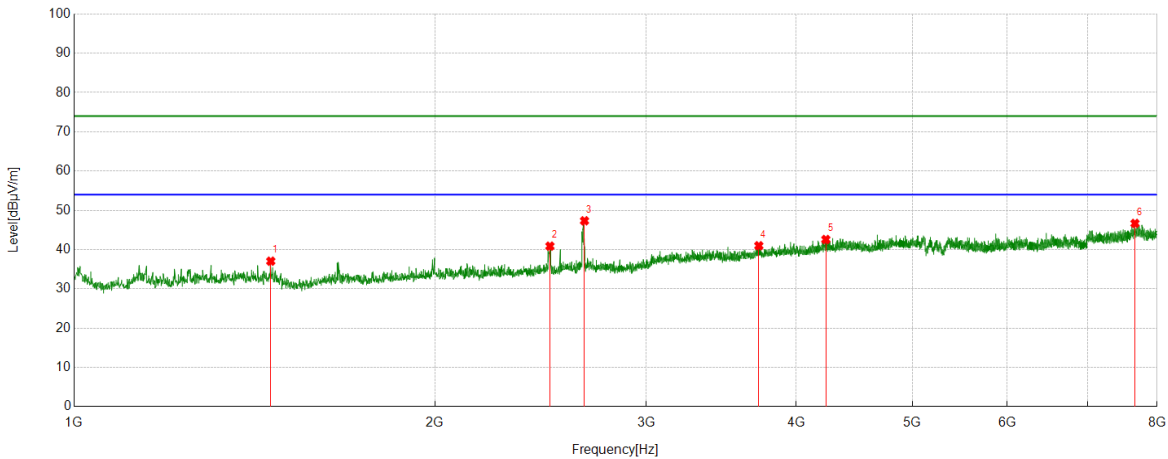
Test Mode	Channel	Polarization	Verdict
11AC40	5190	Vertical	PASS



No.	Frequency	Reading Level	Correct Factor	Result	Limit	Margin	Remark
	(MHz)	(dBuV/m)	(dB)	(dBuV/m)	(dBuV/m)	(dB)	
1	1301.0334	62.22	-20.26	41.96	74.00	32.04	peak
2	1660.4067	63.92	-18.09	45.83	74.00	28.17	peak
3	1997.2219	59.66	-15.96	43.70	74.00	30.30	peak
4	2660.7401	65.86	-12.75	53.11	74.00	20.89	peak
5	4252.2502	52.39	-5.06	47.33	74.00	26.67	peak
6	6973.9971	46.57	0.12	46.69	74.00	27.31	peak

- Remark: 1. Measurement = Reading Level + Correct Factor.
 2. If Peak Result complies with AV limit, AV Result is deemed to comply with AV limit.
 3. Test setup: RBW: 1 MHz, VBW: 3 MHz, Sweep time: auto.
 4. Peak: Peak detector.
 5. AVG: VBW refer to section 6.1.
 6. For below 6.5GHz part, filter losses were only considered in the spurious frequency bands and the authorized band were not corrected for Band Reject Filter losses.
 The proper operation of the transmitter prior to adding the filter to the measurement chain.
 7. Only the worst case emission was recorded, if it complies with the limit, the other emissions deemed to comply with the limit.
 8. Since non-restricted band peak emissions are less than the average limit, they also comply with the -27dBm/MHz (68.2dBuV/m) limit.

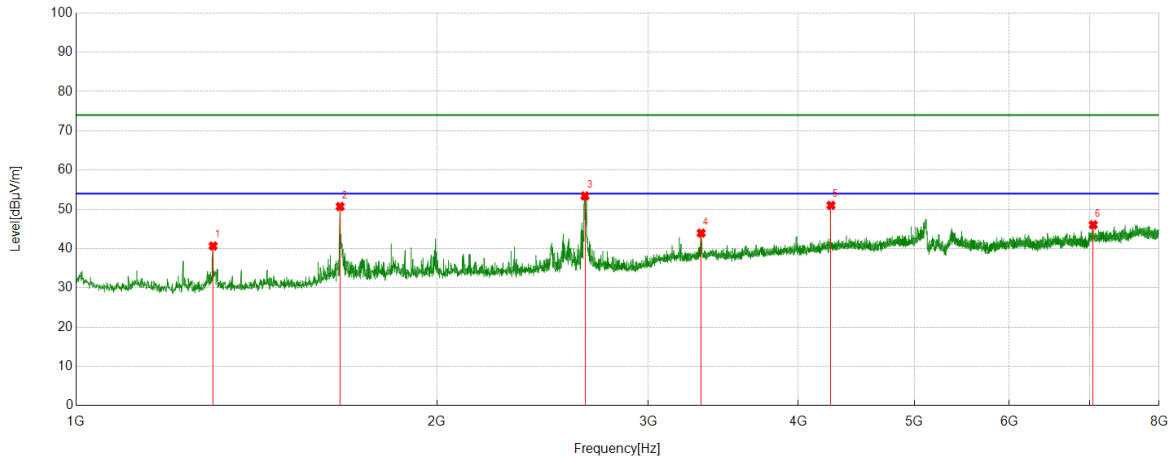
Test Mode	Channel	Polarization	Verdict
11AC40	5230	Horizontal	PASS



No.	Frequency	Reading Level	Correct Factor	Result	Limit	Margin	Remark
	(MHz)	(dBuV/m)	(dB)	(dBuV/m)	(dBuV/m)	(dB)	
1	1458.9399	56.61	-19.56	37.05	74.00	36.95	peak
2	2493.4993	54.73	-13.85	40.88	74.00	33.12	peak
3	2664.6294	60.04	-12.71	47.33	74.00	26.67	peak
4	3724.0805	47.69	-6.71	40.98	74.00	33.02	peak
5	4235.1372	47.84	-5.27	42.57	74.00	31.43	peak
6	7667.852	44.47	2.20	46.67	74.00	27.33	peak

- Remark: 1. Measurement = Reading Level + Correct Factor.
 2. If Peak Result complies with AV limit, AV Result is deemed to comply with AV limit.
 3. Test setup: RBW: 1 MHz, VBW: 3 MHz, Sweep time: auto.
 4. Peak: Peak detector.
 5. AVG: VBW refer to section 6.1.
 6. For below 6.5GHz part, filter losses were only considered in the spurious frequency bands and the authorized band were not corrected for Band Reject Filter losses.
 The proper operation of the transmitter prior to adding the filter to the measurement chain.
 7. Only the worst case emission was recorded, if it complies with the limit, the other emissions deemed to comply with the limit.
 8. Since non-restricted band peak emissions are less than the average limit, they also comply with the -27dBm/MHz (68.2dBuV/m) limit.

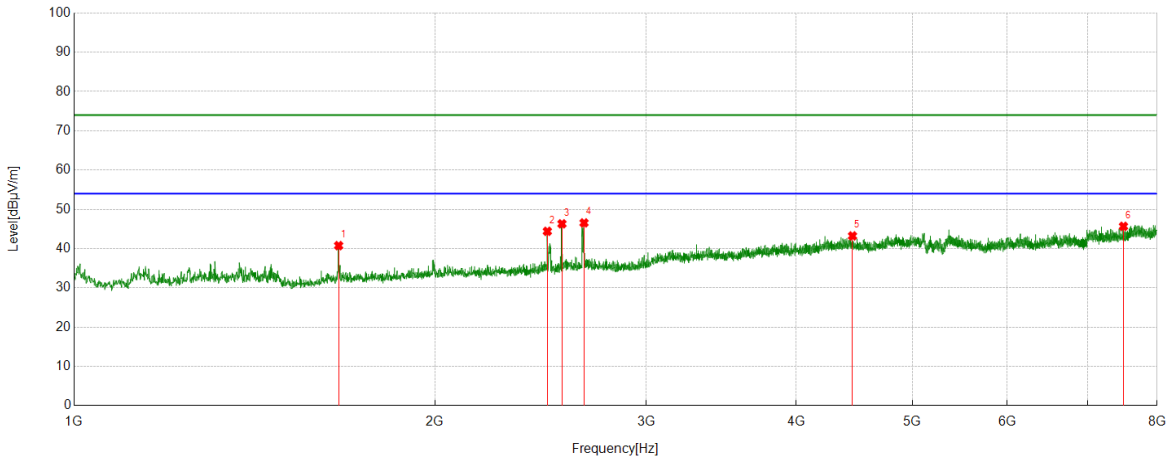
Test Mode	Channel	Polarization	Verdict
11AC40	5230	Vertical	PASS



No.	Frequency	Reading Level	Correct Factor	Result	Limit	Margin	Remark
	(MHz)	(dBuV/m)	(dB)	(dBuV/m)	(dBuV/m)	(dB)	
1	1301.0334	60.93	-20.26	40.67	74.00	33.33	peak
2	1660.4067	68.80	-18.09	50.71	74.00	23.29	peak
3	2656.8508	66.19	-12.78	53.41	74.00	20.59	peak
4	3321.1468	53.18	-9.23	43.95	74.00	30.05	peak
5	4260.8068	56.15	-5.14	51.01	74.00	22.99	peak
6	7050.2278	44.92	1.14	46.06	74.00	27.94	peak

- Remark: 1. Measurement = Reading Level + Correct Factor.
 2. If Peak Result complies with AV limit, AV Result is deemed to comply with AV limit.
 3. Test setup: RBW: 1 MHz, VBW: 3 MHz, Sweep time: auto.
 4. Peak: Peak detector.
 5. AVG: VBW refer to section 6.1.
 6. For below 6.5GHz part, filter losses were only considered in the spurious frequency bands and the authorized band were not corrected for Band Reject Filter losses.
 The proper operation of the transmitter prior to adding the filter to the measurement chain.
 7. Only the worst case emission was recorded, if it complies with the limit, the other emissions deemed to comply with the limit.
 8. Since non-restricted band peak emissions are less than the average limit, they also comply with the -27dBm/MHz (68.2dBuV/m) limit.

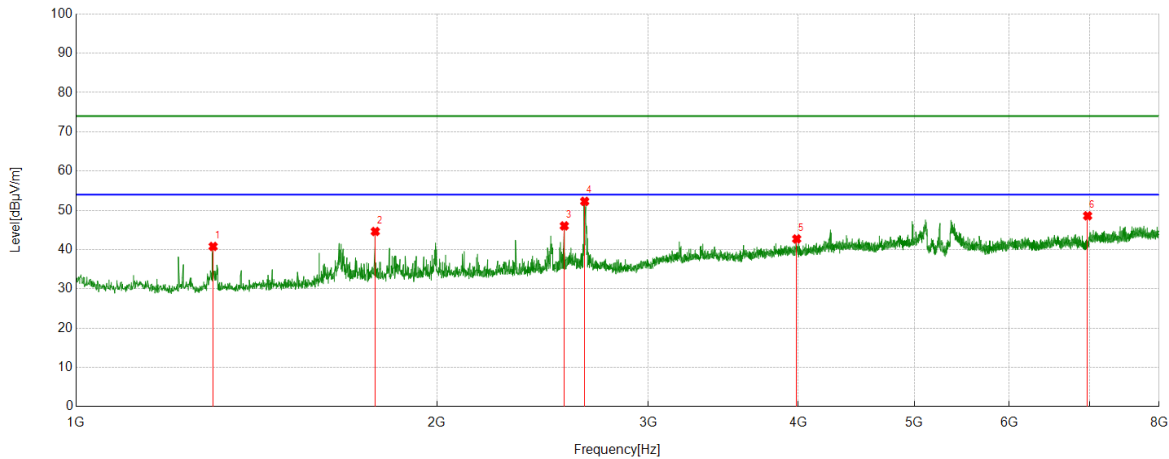
Test Mode	Channel	Polarization	Verdict
11AC40	5270	Horizontal	PASS



No.	Frequency	Reading Level	Correct Factor	Result	Limit	Margin	Remark
	(MHz)	(dBuV/m)	(dB)	(dBuV/m)	(dBuV/m)	(dB)	
1	1661.9624	58.83	-18.07	40.76	74.00	33.24	peak
2	2481.0534	58.27	-13.87	44.40	74.00	29.60	peak
3	2551.8391	59.70	-13.39	46.31	74.00	27.69	peak
4	2662.2958	59.28	-12.73	46.55	74.00	27.45	peak
5	4457.6064	47.49	-4.26	43.23	74.00	30.77	peak
6	7499.8333	44.15	1.52	45.67	74.00	28.33	peak

- Remark: 1. Measurement = Reading Level + Correct Factor.
 2. If Peak Result complies with AV limit, AV Result is deemed to comply with AV limit.
 3. Test setup: RBW: 1 MHz, VBW: 3 MHz, Sweep time: auto.
 4. Peak: Peak detector.
 5. AVG: VBW refer to section 6.1.
 6. For below 6.5GHz part, filter losses were only considered in the spurious frequency bands and the authorized band were not corrected for Band Reject Filter losses.
 The proper operation of the transmitter prior to adding the filter to the measurement chain.
 7. Only the worst case emission was recorded, if it complies with the limit, the other emissions deemed to comply with the limit.
 8. Since non-restricted band peak emissions are less than the average limit, they also comply with the -27dBm/MHz (68.2dBuV/m) limit.

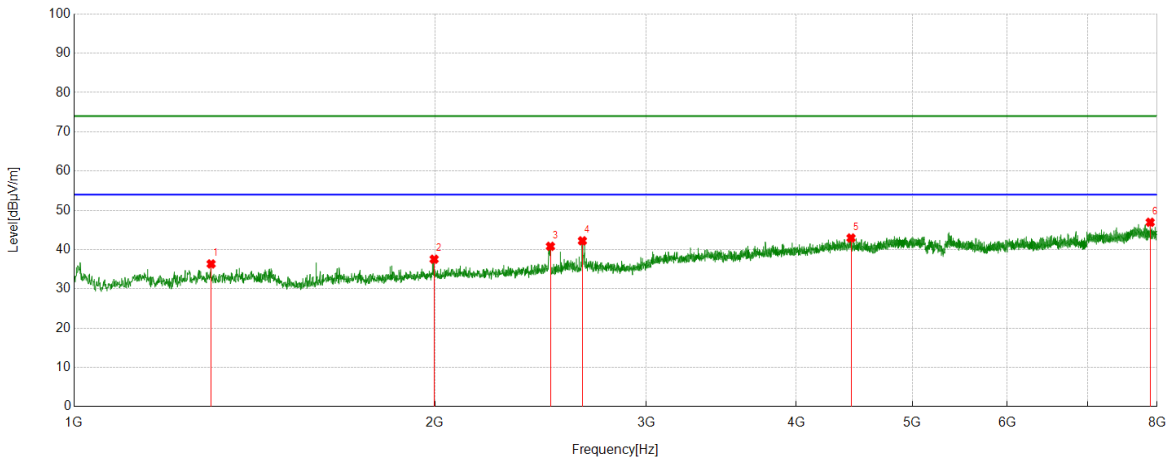
Test Mode	Channel	Polarization	Verdict
11AC40	5270	Vertical	PASS



No.	Frequency	Reading Level	Correct Factor	Result	Limit	Margin	Remark
	(MHz)	(dBuV/m)	(dB)	(dBuV/m)	(dBuV/m)	(dB)	
1	1301.0334	61.06	-20.26	40.80	74.00	33.20	peak
2	1776.3085	62.20	-17.59	44.61	74.00	29.39	peak
3	2553.3948	59.42	-13.38	46.04	74.00	27.96	peak
4	2655.295	65.07	-12.79	52.28	74.00	21.72	peak
5	3989.3321	49.04	-6.33	42.71	74.00	31.29	peak
6	6973.9971	48.48	0.12	48.60	74.00	25.40	peak

- Remark: 1. Measurement = Reading Level + Correct Factor.
 2. If Peak Result complies with AV limit, AV Result is deemed to comply with AV limit.
 3. Test setup: RBW: 1 MHz, VBW: 3 MHz, Sweep time: auto.
 4. Peak: Peak detector.
 5. AVG: VBW refer to section 6.1.
 6. For below 6.5GHz part, filter losses were only considered in the spurious frequency bands and the authorized band were not corrected for Band Reject Filter losses.
 The proper operation of the transmitter prior to adding the filter to the measurement chain.
 7. Only the worst case emission was recorded, if it complies with the limit, the other emissions deemed to comply with the limit.
 8. Since non-restricted band peak emissions are less than the average limit, they also comply with the -27dBm/MHz (68.2dBuV/m) limit.

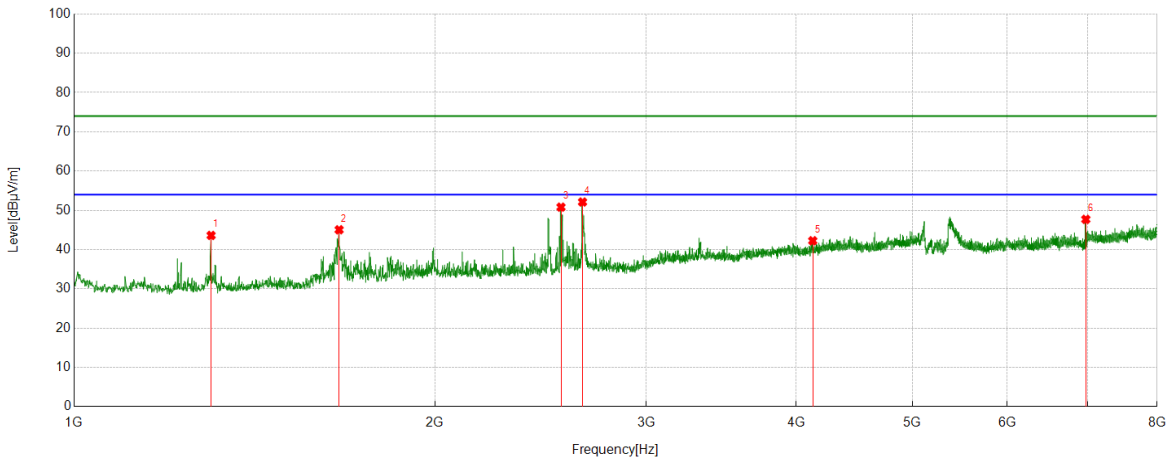
Test Mode	Channel	Polarization	Verdict
11AC40	5310	Horizontal	PASS



No.	Frequency	Reading Level	Correct Factor	Result	Limit	Margin	Remark
	(MHz)	(dBuV/m)	(dB)	(dBuV/m)	(dBuV/m)	(dB)	
1	1301.0334	56.61	-20.26	36.35	74.00	37.65	peak
2	1996.444	53.53	-15.98	37.55	74.00	36.45	peak
3	2495.8329	54.67	-13.84	40.83	74.00	33.17	peak
4	2653.7393	55.04	-12.81	42.23	74.00	31.77	peak
5	4445.1606	47.17	-4.22	42.95	74.00	31.05	peak
6	7894.9883	43.96	2.99	46.95	74.00	27.05	peak

- Remark: 1. Measurement = Reading Level + Correct Factor.
 2. If Peak Result complies with AV limit, AV Result is deemed to comply with AV limit.
 3. Test setup: RBW: 1 MHz, VBW: 3 MHz, Sweep time: auto.
 4. Peak: Peak detector.
 5. AVG: VBW refer to section 6.1.
 6. For below 6.5GHz part, filter losses were only considered in the spurious frequency bands and the authorized band were not corrected for Band Reject Filter losses.
 The proper operation of the transmitter prior to adding the filter to the measurement chain.
 7. Only the worst case emission was recorded, if it complies with the limit, the other emissions deemed to comply with the limit.
 8. Since non-restricted band peak emissions are less than the average limit, they also comply with the -27dBm/MHz (68.2dBuV/m) limit.

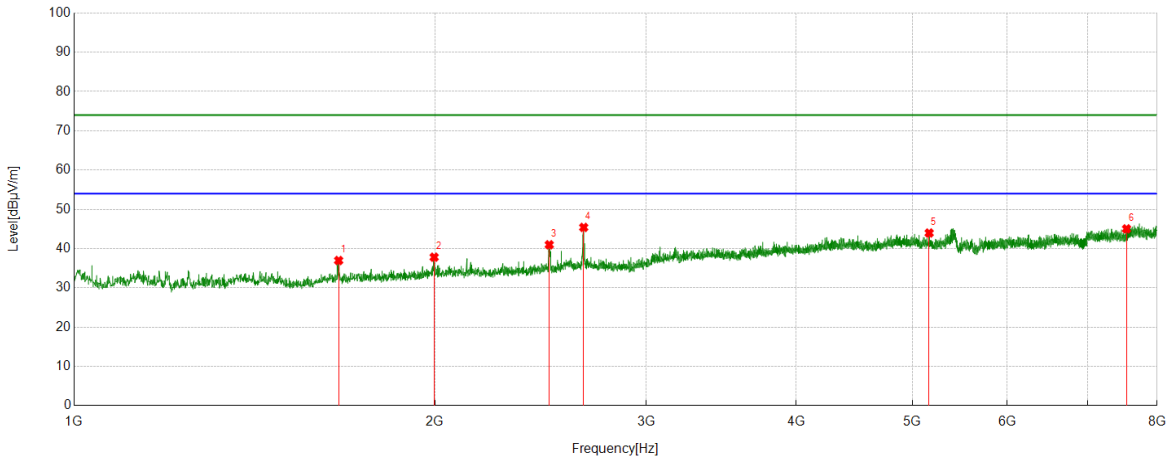
Test Mode	Channel	Polarization	Verdict
11AC40	5310	Vertical	PASS



No.	Frequency	Reading Level	Correct Factor	Result	Limit	Margin	Remark
	(MHz)	(dBuV/m)	(dB)	(dBuV/m)	(dBuV/m)	(dB)	
1	1301.0334	63.87	-20.26	43.61	74.00	30.39	peak
2	1663.5182	63.09	-18.04	45.05	74.00	28.95	peak
3	2547.1719	64.16	-13.35	50.81	74.00	23.19	peak
4	2654.5172	64.92	-12.80	52.12	74.00	21.88	peak
5	4130.1256	48.15	-5.90	42.25	74.00	31.75	peak
6	6977.1086	47.57	0.13	47.70	74.00	26.30	peak

- Remark: 1. Measurement = Reading Level + Correct Factor.
 2. If Peak Result complies with AV limit, AV Result is deemed to comply with AV limit.
 3. Test setup: RBW: 1 MHz, VBW: 3 MHz, Sweep time: auto.
 4. Peak: Peak detector.
 5. AVG: VBW refer to section 6.1.
 6. For below 6.5GHz part, filter losses were only considered in the spurious frequency bands and the authorized band were not corrected for Band Reject Filter losses.
 The proper operation of the transmitter prior to adding the filter to the measurement chain.
 7. Only the worst case emission was recorded, if it complies with the limit, the other emissions deemed to comply with the limit.
 8. Since non-restricted band peak emissions are less than the average limit, they also comply with the -27dBm/MHz (68.2dBuV/m) limit.

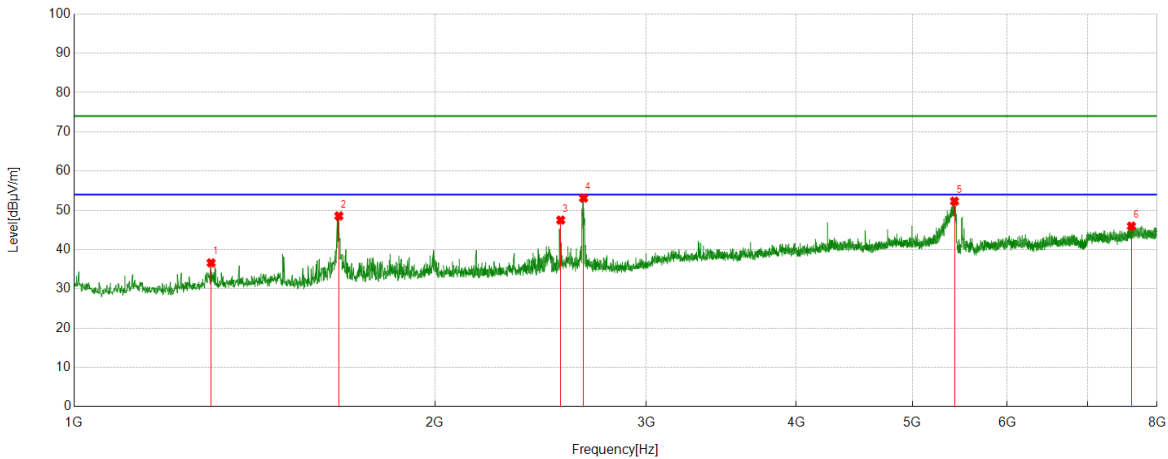
Test Mode	Channel	Polarization	Verdict
11AC40	5510	Horizontal	PASS



No.	Frequency	Reading Level	Correct Factor	Result	Limit	Margin	Remark
	(MHz)	(dBuV/m)	(dB)	(dBuV/m)	(dBuV/m)	(dB)	
1	1661.9624	55.02	-18.05	36.97	74.00	37.03	peak
2	1996.444	53.67	-15.86	37.81	74.00	36.19	peak
3	2490.3878	54.93	-13.95	40.98	74.00	33.02	peak
4	2660.7401	57.88	-12.48	45.40	74.00	28.60	peak
5	5164.685	46.86	-2.89	43.97	74.00	30.03	peak
6	7544.1716	43.33	1.69	45.02	74.00	28.98	peak

- Remark: 1. Measurement = Reading Level + Correct Factor.
 2. If Peak Result complies with AV limit, AV Result is deemed to comply with AV limit.
 3. Test setup: RBW: 1 MHz, VBW: 3 MHz, Sweep time: auto.
 4. Peak: Peak detector.
 5. AVG: VBW refer to section 6.1.
 6. For below 6.5GHz part, filter losses were only considered in the spurious frequency bands and the authorized band were not corrected for Band Reject Filter losses.
 The proper operation of the transmitter prior to adding the filter to the measurement chain.
 7. Only the worst case emission was recorded, if it complies with the limit, the other emissions deemed to comply with the limit.
 8. Since non-restricted band peak emissions are less than the average limit, they also comply with the -27dBm/MHz (68.2dBuV/m) limit.

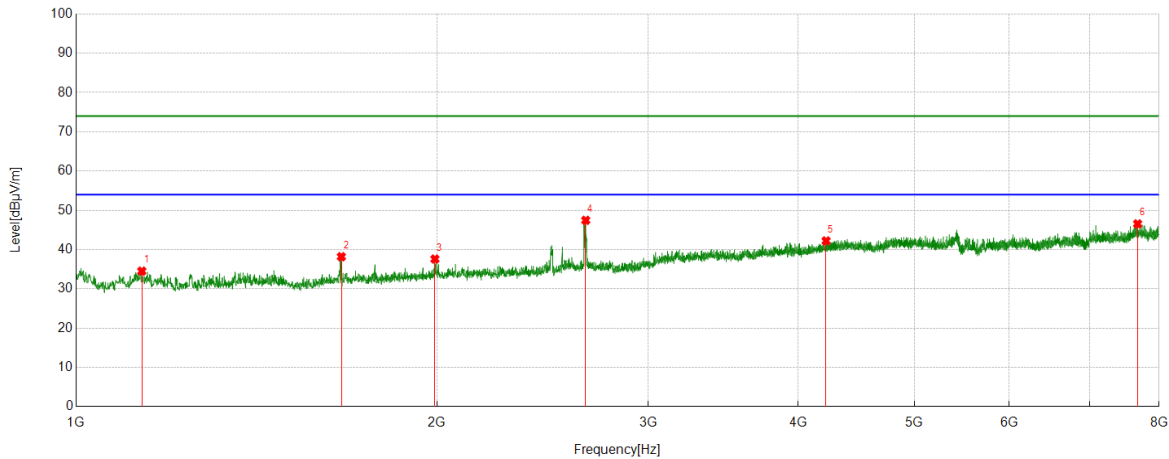
Test Mode	Channel	Polarization	Verdict
11AC40	5510	Vertical	PASS



No.	Frequency	Reading Level	Correct Factor	Result	Limit	Margin	Remark
	(MHz)	(dBuV/m)	(dB)	(dBuV/m)	(dBuV/m)	(dB)	
1	1301.0334	56.80	-20.18	36.62	74.00	37.38	peak
2	1662.7403	66.59	-18.03	48.56	74.00	25.44	peak
3	2545.6162	60.39	-12.88	47.51	74.00	26.49	peak
4	2659.9622	65.60	-12.48	53.12	74.00	20.88	peak
5	5422.158	54.02	-1.70	52.32	74.00	21.68	peak
6	7614.9572	43.66	2.31	45.97	74.00	28.03	peak

- Remark: 1. Measurement = Reading Level + Correct Factor.
 2. If Peak Result complies with AV limit, AV Result is deemed to comply with AV limit.
 3. Test setup: RBW: 1 MHz, VBW: 3 MHz, Sweep time: auto.
 4. Peak: Peak detector.
 5. AVG: VBW refer to section 6.1.
 6. For below 6.5GHz part, filter losses were only considered in the spurious frequency bands and the authorized band were not corrected for Band Reject Filter losses.
 The proper operation of the transmitter prior to adding the filter to the measurement chain.
 7. Only the worst case emission was recorded, if it complies with the limit, the other emissions deemed to comply with the limit.
 8. Since non-restricted band peak emissions are less than the average limit, they also comply with the -27dBm/MHz (68.2dBuV/m) limit.

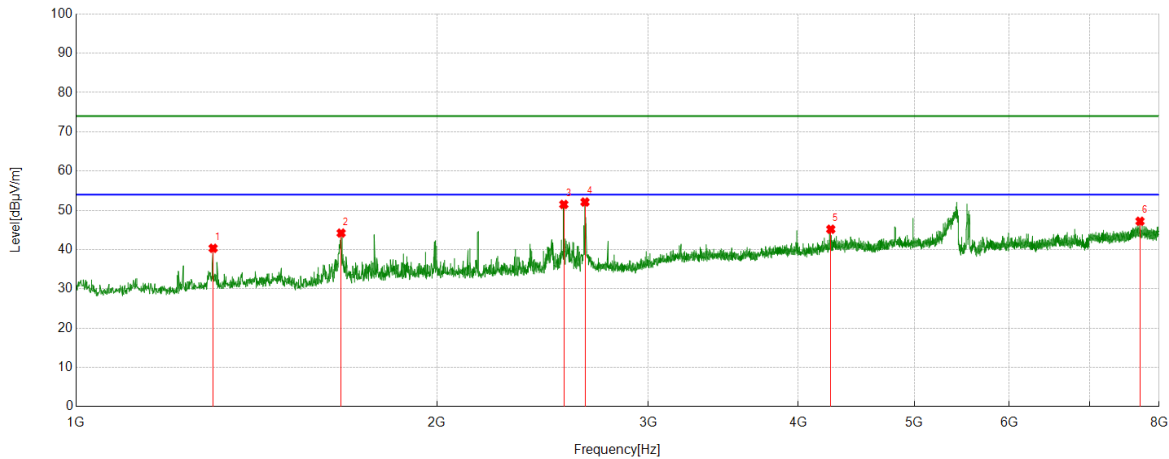
Test Mode	Channel	Polarization	Verdict
11AC40	5550	Horizontal	PASS



No.	Frequency	Reading Level	Correct Factor	Result	Limit	Margin	Remark
	(MHz)	(dBuV/m)	(dB)	(dBuV/m)	(dBuV/m)	(dB)	
1	1134.5705	55.71	-21.19	34.52	74.00	39.48	peak
2	1664.296	56.20	-18.01	38.19	74.00	35.81	peak
3	1991.7769	53.55	-15.96	37.59	74.00	36.41	peak
4	2660.7401	59.94	-12.48	47.46	74.00	26.54	peak
5	4221.1357	47.47	-5.25	42.22	74.00	31.78	peak
6	7677.1864	44.31	2.24	46.55	74.00	27.45	peak

- Remark: 1. Measurement = Reading Level + Correct Factor.
 2. If Peak Result complies with AV limit, AV Result is deemed to comply with AV limit.
 3. Test setup: RBW: 1 MHz, VBW: 3 MHz, Sweep time: auto.
 4. Peak: Peak detector.
 5. AVG: VBW refer to section 6.1.
 6. For below 6.5GHz part, filter losses were only considered in the spurious frequency bands and the authorized band were not corrected for Band Reject Filter losses.
 The proper operation of the transmitter prior to adding the filter to the measurement chain.
 7. Only the worst case emission was recorded, if it complies with the limit, the other emissions deemed to comply with the limit.
 8. Since non-restricted band peak emissions are less than the average limit, they also comply with the -27dBm/MHz (68.2dBuV/m) limit.

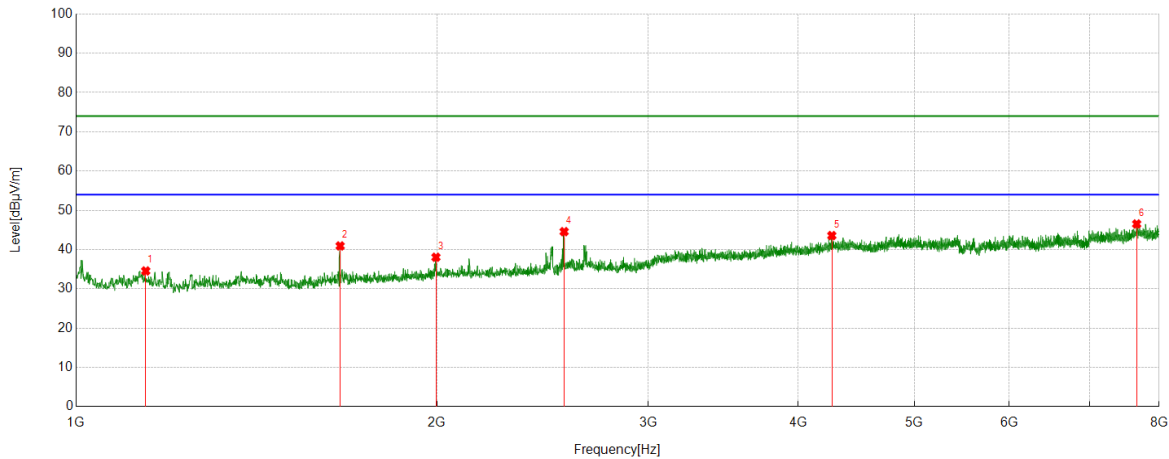
Test Mode	Channel	Polarization	Verdict
11AC40	5550	Vertical	PASS



No.	Frequency	Reading Level	Correct Factor	Result	Limit	Margin	Remark
	(MHz)	(dBuV/m)	(dB)	(dBuV/m)	(dBuV/m)	(dB)	
1	1301.0334	60.52	-20.18	40.34	74.00	33.66	peak
2	1663.5182	62.23	-18.02	44.21	74.00	29.79	peak
3	2551.0612	64.41	-12.91	51.50	74.00	22.50	peak
4	2656.8508	64.63	-12.52	52.11	74.00	21.89	peak
5	4259.251	50.34	-5.16	45.18	74.00	28.82	peak
6	7712.1902	44.60	2.62	47.22	74.00	26.78	peak

- Remark: 1. Measurement = Reading Level + Correct Factor.
 2. If Peak Result complies with AV limit, AV Result is deemed to comply with AV limit.
 3. Test setup: RBW: 1 MHz, VBW: 3 MHz, Sweep time: auto.
 4. Peak: Peak detector.
 5. AVG: VBW refer to section 6.1.
 6. For below 6.5GHz part, filter losses were only considered in the spurious frequency bands and the authorized band were not corrected for Band Reject Filter losses.
 The proper operation of the transmitter prior to adding the filter to the measurement chain.
 7. Only the worst case emission was recorded, if it complies with the limit, the other emissions deemed to comply with the limit.
 8. Since non-restricted band peak emissions are less than the average limit, they also comply with the -27dBm/MHz (68.2dBuV/m) limit.

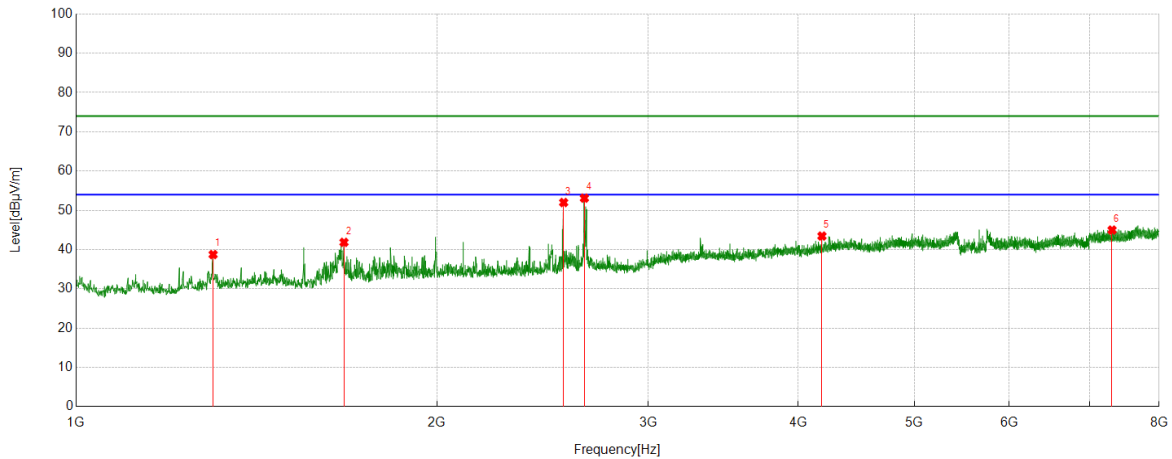
Test Mode	Channel	Polarization	Verdict
11AC40	5670	Horizontal	PASS



No.	Frequency	Reading Level	Correct Factor	Result	Limit	Margin	Remark
	(MHz)	(dBuV/m)	(dB)	(dBuV/m)	(dBuV/m)	(dB)	
1	1143.127	55.65	-21.09	34.56	74.00	39.44	peak
2	1660.4067	59.00	-18.07	40.93	74.00	33.07	peak
3	1995.6662	53.92	-15.87	38.05	74.00	35.95	peak
4	2552.617	57.46	-12.89	44.57	74.00	29.43	peak
5	4267.8075	48.39	-4.82	43.57	74.00	30.43	peak
6	7663.1848	44.29	2.24	46.53	74.00	27.47	peak

- Remark: 1. Measurement = Reading Level + Correct Factor.
 2. If Peak Result complies with AV limit, AV Result is deemed to comply with AV limit.
 3. Test setup: RBW: 1 MHz, VBW: 3 MHz, Sweep time: auto.
 4. Peak: Peak detector.
 5. AVG: VBW refer to section 6.1.
 6. For below 6.5GHz part, filter losses were only considered in the spurious frequency bands and the authorized band were not corrected for Band Reject Filter losses.
 The proper operation of the transmitter prior to adding the filter to the measurement chain.
 7. Only the worst case emission was recorded, if it complies with the limit, the other emissions deemed to comply with the limit.
 8. Since non-restricted band peak emissions are less than the average limit, they also comply with the -27dBm/MHz (68.2dBuV/m) limit.

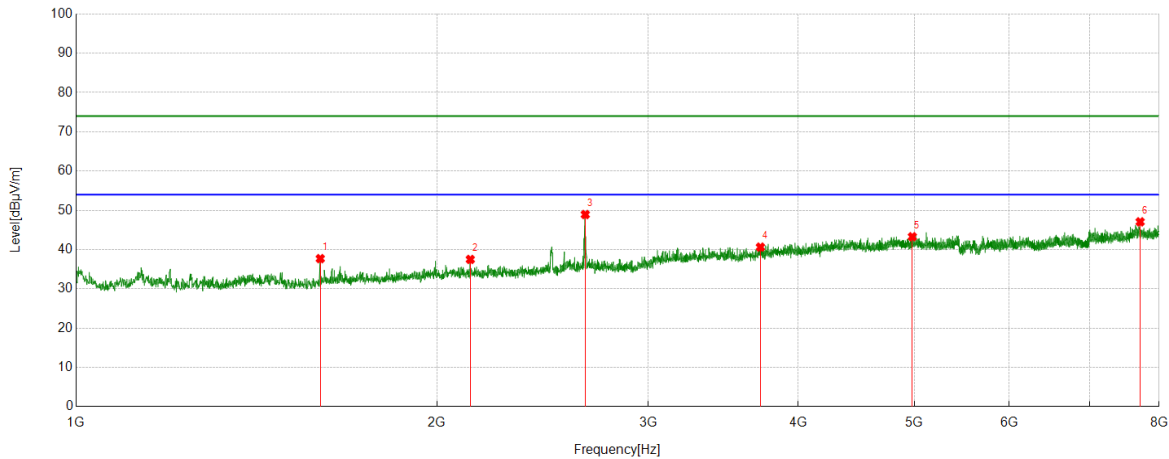
Test Mode	Channel	Polarization	Verdict
11AC40	5670	Vertical	PASS



No.	Frequency	Reading Level	Correct Factor	Result	Limit	Margin	Remark
	(MHz)	(dBuV/m)	(dB)	(dBuV/m)	(dBuV/m)	(dB)	
1	1301.0334	58.92	-20.18	38.74	74.00	35.26	peak
2	1672.8525	59.79	-17.94	41.85	74.00	32.15	peak
3	2550.2834	64.92	-12.93	51.99	74.00	22.01	peak
4	2653.7393	65.67	-12.57	53.10	74.00	20.90	peak
5	4187.6875	49.00	-5.55	43.45	74.00	30.55	peak
6	7309.2566	44.16	0.82	44.98	74.00	29.02	peak

- Remark: 1. Measurement = Reading Level + Correct Factor.
 2. If Peak Result complies with AV limit, AV Result is deemed to comply with AV limit.
 3. Test setup: RBW: 1 MHz, VBW: 3 MHz, Sweep time: auto.
 4. Peak: Peak detector.
 5. AVG: VBW refer to section 6.1.
 6. For below 6.5GHz part, filter losses were only considered in the spurious frequency bands and the authorized band were not corrected for Band Reject Filter losses.
 The proper operation of the transmitter prior to adding the filter to the measurement chain.
 7. Only the worst case emission was recorded, if it complies with the limit, the other emissions deemed to comply with the limit.
 8. Since non-restricted band peak emissions are less than the average limit, they also comply with the -27dBm/MHz (68.2dBuV/m) limit.

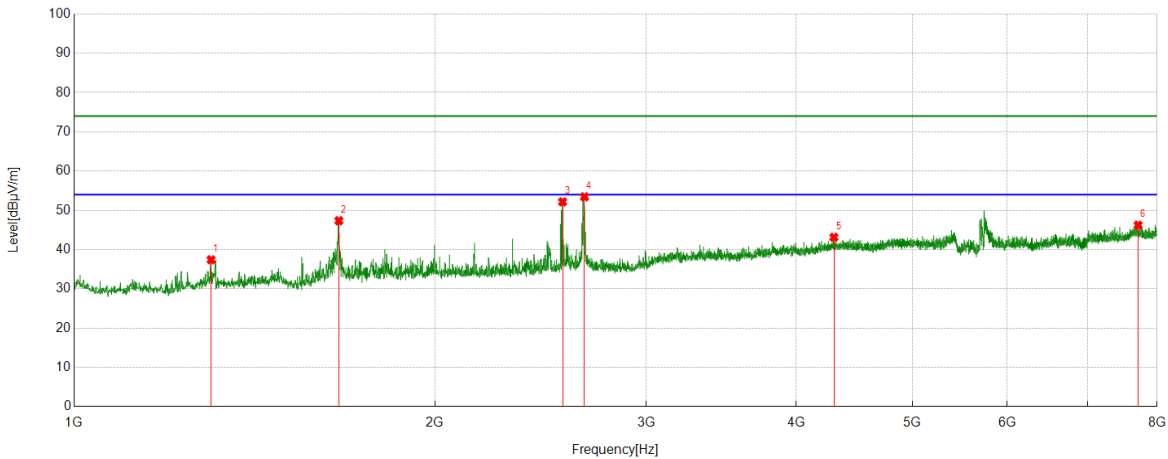
Test Mode	Channel	Polarization	Verdict
11AC40	5710	Horizontal	PASS



No.	Frequency	Reading Level	Correct Factor	Result	Limit	Margin	Remark
	(MHz)	(dBuV/m)	(dB)	(dBuV/m)	(dBuV/m)	(dB)	
1	1598.1776	56.06	-18.36	37.70	74.00	36.30	peak
2	2131.7924	52.98	-15.48	37.50	74.00	36.50	peak
3	2658.4065	61.44	-12.51	48.93	74.00	25.07	peak
4	3720.969	47.66	-7.03	40.63	74.00	33.37	peak
5	4981.109	45.90	-2.62	43.28	74.00	30.72	peak
6	7714.5238	44.50	2.57	47.07	74.00	26.93	peak

- Remark: 1. Measurement = Reading Level + Correct Factor.
 2. If Peak Result complies with AV limit, AV Result is deemed to comply with AV limit.
 3. Test setup: RBW: 1 MHz, VBW: 3 MHz, Sweep time: auto.
 4. Peak: Peak detector.
 5. AVG: VBW refer to section 6.1.
 6. For below 6.5GHz part, filter losses were only considered in the spurious frequency bands and the authorized band were not corrected for Band Reject Filter losses.
 The proper operation of the transmitter prior to adding the filter to the measurement chain.
 7. Only the worst case emission was recorded, if it complies with the limit, the other emissions deemed to comply with the limit.
 8. Since non-restricted band peak emissions are less than the average limit, they also comply with the -27dBm/MHz (68.2dBuV/m) limit.

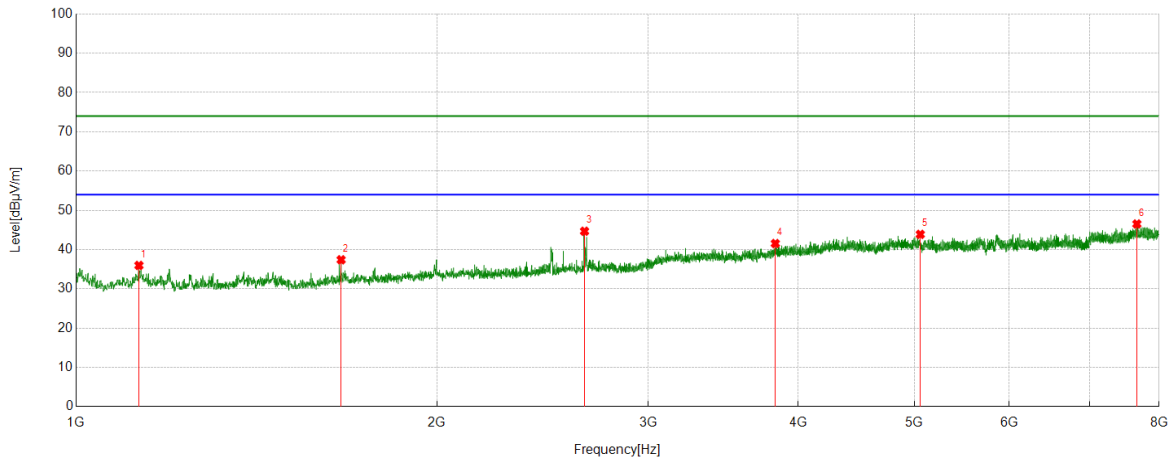
Test Mode	Channel	Polarization	Verdict
11AC40	5710	Vertical	PASS



No.	Frequency	Reading Level	Correct Factor	Result	Limit	Margin	Remark
	(MHz)	(dBuV/m)	(dB)	(dBuV/m)	(dBuV/m)	(dB)	
1	1301.0334	57.59	-20.18	37.41	74.00	36.59	peak
2	1662.7403	65.38	-18.03	47.35	74.00	26.65	peak
3	2554.9506	65.04	-12.87	52.17	74.00	21.83	peak
4	2664.6294	65.89	-12.45	53.44	74.00	20.56	peak
5	4301.2557	47.51	-4.37	43.14	74.00	30.86	peak
6	7714.5238	43.65	2.57	46.22	74.00	27.78	peak

- Remark: 1. Measurement = Reading Level + Correct Factor.
 2. If Peak Result complies with AV limit, AV Result is deemed to comply with AV limit.
 3. Test setup: RBW: 1 MHz, VBW: 3 MHz, Sweep time: auto.
 4. Peak: Peak detector.
 5. AVG: VBW refer to section 6.1.
 6. For below 6.5GHz part, filter losses were only considered in the spurious frequency bands and the authorized band were not corrected for Band Reject Filter losses.
 The proper operation of the transmitter prior to adding the filter to the measurement chain.
 7. Only the worst case emission was recorded, if it complies with the limit, the other emissions deemed to comply with the limit.
 8. Since non-restricted band peak emissions are less than the average limit, they also comply with the -27dBm/MHz (68.2dBuV/m) limit.

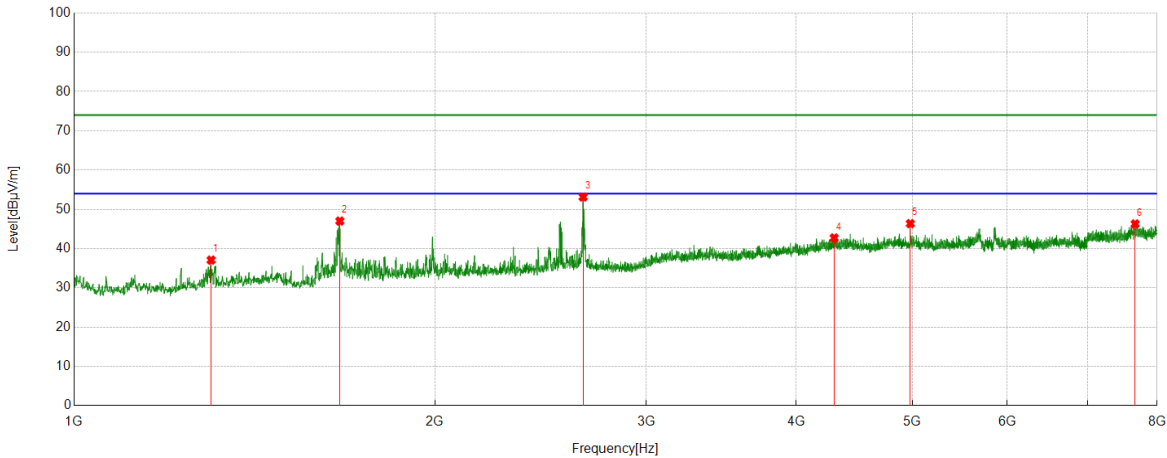
Test Mode	Channel	Polarization	Verdict
11AC40	5755	Horizontal	PASS



No.	Frequency	Reading Level	Correct Factor	Result	Limit	Margin	Remark
	(MHz)	(dBuV/m)	(dB)	(dBuV/m)	(dBuV/m)	(dB)	
1	1128.3476	57.19	-21.22	35.97	74.00	38.03	peak
2	1663.5182	55.40	-17.99	37.41	74.00	36.59	peak
3	2654.5172	57.55	-12.87	44.68	74.00	29.32	peak
4	3829.0921	48.08	-6.53	41.55	74.00	32.45	peak
5	5058.1176	46.53	-2.65	43.88	74.00	30.12	peak
6	7666.2963	44.26	2.27	46.53	74.00	27.47	peak

- Remark: 1. Measurement = Reading Level + Correct Factor.
 2. If Peak Result complies with AV limit, AV Result is deemed to comply with AV limit.
 3. Test setup: RBW: 1 MHz, VBW: 3 MHz, Sweep time: auto.
 4. Peak: Peak detector.
 5. AVG: VBW refer to section 6.1.
 6. For below 6.5GHz part, filter losses were only considered in the spurious frequency bands and the authorized band were not corrected for Band Reject Filter losses.
 The proper operation of the transmitter prior to adding the filter to the measurement chain.
 7. Only the worst case emission was recorded, if it complies with the limit, the other emissions deemed to comply with the limit.
 8. Since non-restricted band peak emissions are less than the average limit, they also comply with the -27dBm/MHz (68.2dBuV/m) limit.

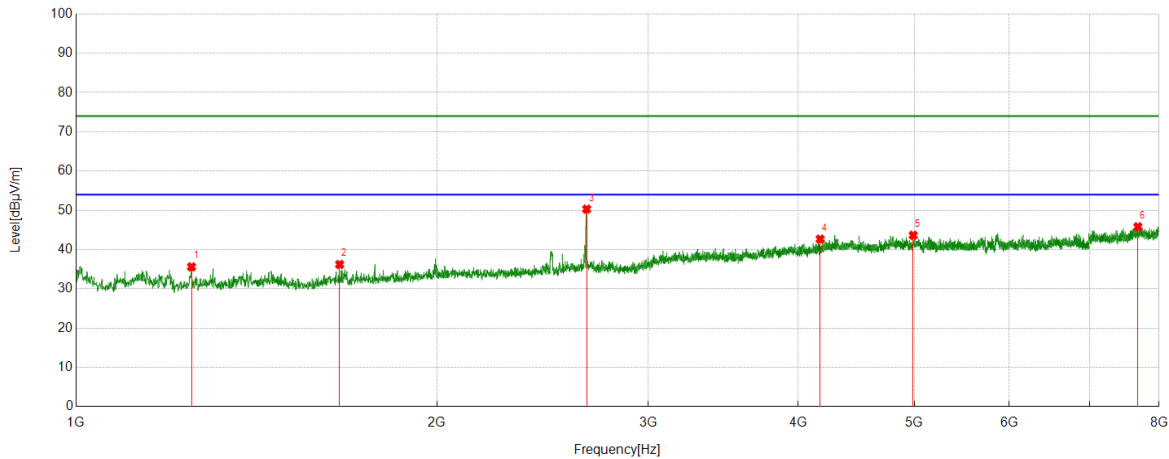
Test Mode	Channel	Polarization	Verdict
11AC40	5755	Vertical	PASS



No.	Frequency	Reading Level	Correct Factor	Result	Limit	Margin	Remark
	(MHz)	(dBuV/m)	(dB)	(dBuV/m)	(dBuV/m)	(dB)	
1	1301.0334	57.26	-20.18	37.08	74.00	36.92	peak
2	1665.8518	64.95	-17.94	47.01	74.00	26.99	peak
3	2657.6286	66.02	-12.89	53.13	74.00	20.87	peak
4	4303.5893	46.88	-4.16	42.72	74.00	31.28	peak
5	4981.109	49.28	-2.92	46.36	74.00	27.64	peak
6	7670.1856	43.98	2.30	46.28	74.00	27.72	peak

- Remark: 1. Measurement = Reading Level + Correct Factor.
 2. If Peak Result complies with AV limit, AV Result is deemed to comply with AV limit.
 3. Test setup: RBW: 1 MHz, VBW: 3 MHz, Sweep time: auto.
 4. Peak: Peak detector.
 5. AVG: VBW refer to section 6.1.
 6. For below 6.5GHz part, filter losses were only considered in the spurious frequency bands and the authorized band were not corrected for Band Reject Filter losses.
 The proper operation of the transmitter prior to adding the filter to the measurement chain.
 7. Only the worst case emission was recorded, if it complies with the limit, the other emissions deemed to comply with the limit.
 8. Since non-restricted band peak emissions are less than the average limit, they also comply with the -27dBm/MHz (68.2dBuV/m) limit.

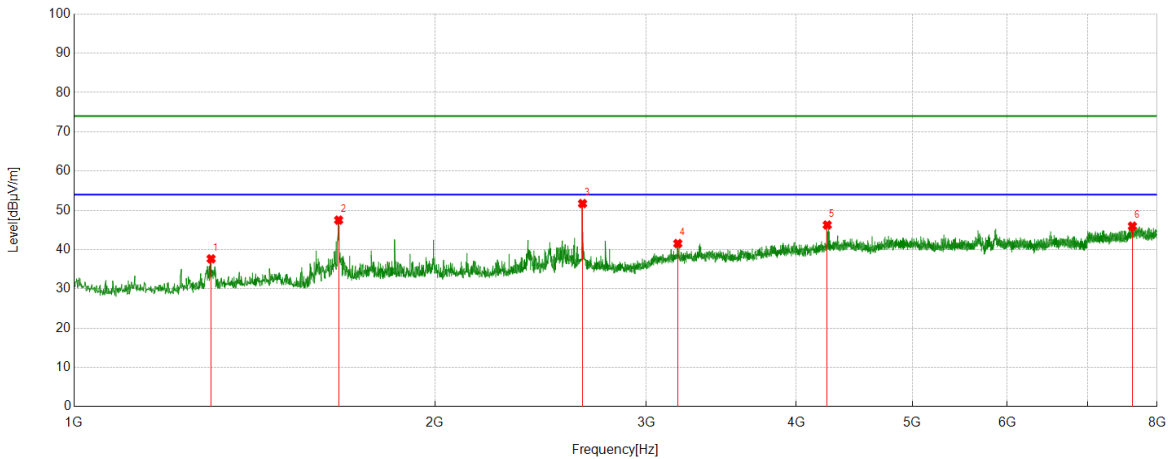
Test Mode	Channel	Polarization	Verdict
11AC40	5795	Horizontal	PASS



No.	Frequency	Reading Level	Correct Factor	Result	Limit	Margin	Remark
	(MHz)	(dBuV/m)	(dB)	(dBuV/m)	(dBuV/m)	(dB)	
1	1248.1387	56.27	-20.66	35.61	74.00	38.39	peak
2	1658.851	54.29	-18.07	36.22	74.00	37.78	peak
3	2665.4073	63.19	-12.89	50.30	74.00	23.70	peak
4	4172.9081	48.22	-5.56	42.66	74.00	31.34	peak
5	4989.6655	46.14	-2.50	43.64	74.00	30.36	peak
6	7681.0757	43.57	2.23	45.80	74.00	28.20	peak

- Remark: 1. Measurement = Reading Level + Correct Factor.
 2. If Peak Result complies with AV limit, AV Result is deemed to comply with AV limit.
 3. Test setup: RBW: 1 MHz, VBW: 3 MHz, Sweep time: auto.
 4. Peak: Peak detector.
 5. AVG: VBW refer to section 6.1.
 6. For below 6.5GHz part, filter losses were only considered in the spurious frequency bands and the authorized band were not corrected for Band Reject Filter losses.
 The proper operation of the transmitter prior to adding the filter to the measurement chain.
 7. Only the worst case emission was recorded, if it complies with the limit, the other emissions deemed to comply with the limit.
 8. Since non-restricted band peak emissions are less than the average limit, they also comply with the -27dBm/MHz (68.2dBuV/m) limit.

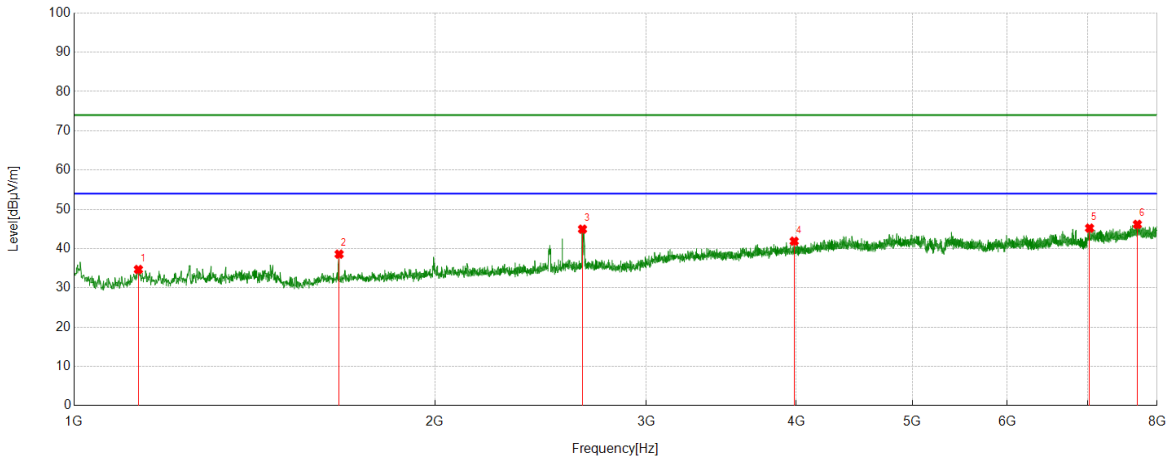
Test Mode	Channel	Polarization	Verdict
11AC40	5795	Vertical	PASS



No.	Frequency	Reading Level	Correct Factor	Result	Limit	Margin	Remark
	(MHz)	(dBuV/m)	(dB)	(dBuV/m)	(dBuV/m)	(dB)	
1	1301.0334	57.83	-20.18	37.65	74.00	36.35	peak
2	1661.9624	65.54	-18.03	47.51	74.00	26.49	peak
3	2654.5172	64.59	-12.87	51.72	74.00	22.28	peak
4	3187.3542	51.02	-9.48	41.54	74.00	32.46	peak
5	4246.8052	51.11	-4.85	46.26	74.00	27.74	peak
6	7629.7366	43.43	2.55	45.98	74.00	28.02	peak

- Remark: 1. Measurement = Reading Level + Correct Factor.
 2. If Peak Result complies with AV limit, AV Result is deemed to comply with AV limit.
 3. Test setup: RBW: 1 MHz, VBW: 3 MHz, Sweep time: auto.
 4. Peak: Peak detector.
 5. AVG: VBW refer to section 6.1.
 6. For below 6.5GHz part, filter losses were only considered in the spurious frequency bands and the authorized band were not corrected for Band Reject Filter losses.
 The proper operation of the transmitter prior to adding the filter to the measurement chain.
 7. Only the worst case emission was recorded, if it complies with the limit, the other emissions deemed to comply with the limit.
 8. Since non-restricted band peak emissions are less than the average limit, they also comply with the -27dBm/MHz (68.2dBuV/m) limit.

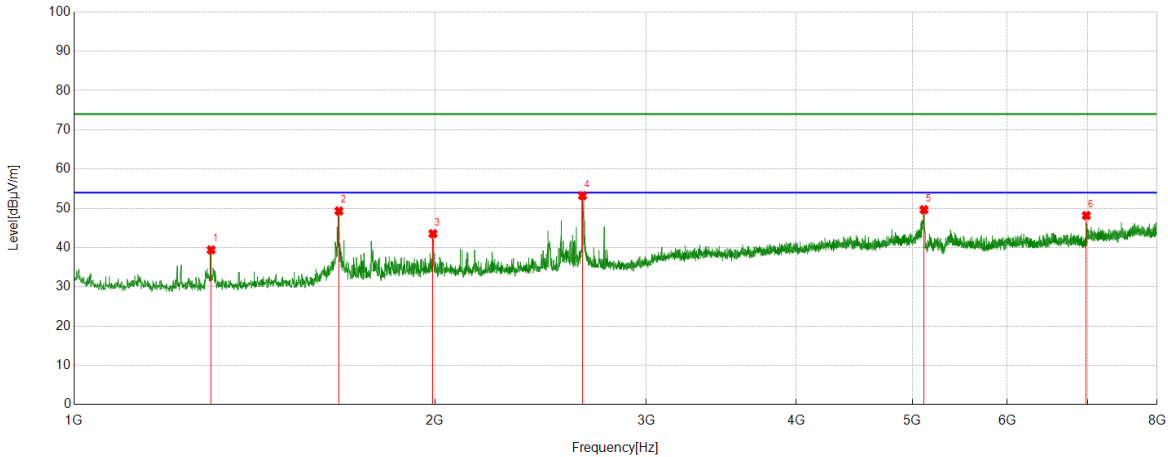
Test Mode	Channel	Polarization	Verdict
11AC80	5210	Horizontal	PASS



No.	Frequency	Reading Level	Correct Factor	Result	Limit	Margin	Remark
	(MHz)	(dBuV/m)	(dB)	(dBuV/m)	(dBuV/m)	(dB)	
1	1131.4591	55.93	-21.25	34.68	74.00	39.32	peak
2	1663.5182	56.62	-18.04	38.58	74.00	35.42	peak
3	2654.5172	57.75	-12.80	44.95	74.00	29.05	peak
4	3985.4428	48.01	-6.13	41.88	74.00	32.12	peak
5	7027.6697	44.51	0.70	45.21	74.00	28.79	peak
6	7702.8559	43.73	2.44	46.17	74.00	27.83	peak

- Remark: 1. Measurement = Reading Level + Correct Factor.
 2. If Peak Result complies with AV limit, AV Result is deemed to comply with AV limit.
 3. Test setup: RBW: 1 MHz, VBW: 3 MHz, Sweep time: auto.
 4. Peak: Peak detector.
 5. AVG: VBW refer to section 6.1.
 6. For below 6.5GHz part, filter losses were only considered in the spurious frequency bands and the authorized band were not corrected for Band Reject Filter losses.
 The proper operation of the transmitter prior to adding the filter to the measurement chain.
 7. Only the worst case emission was recorded, if it complies with the limit, the other emissions deemed to comply with the limit.
 8. Since non-restricted band peak emissions are less than the average limit, they also comply with the -27dBm/MHz (68.2dBuV/m) limit.

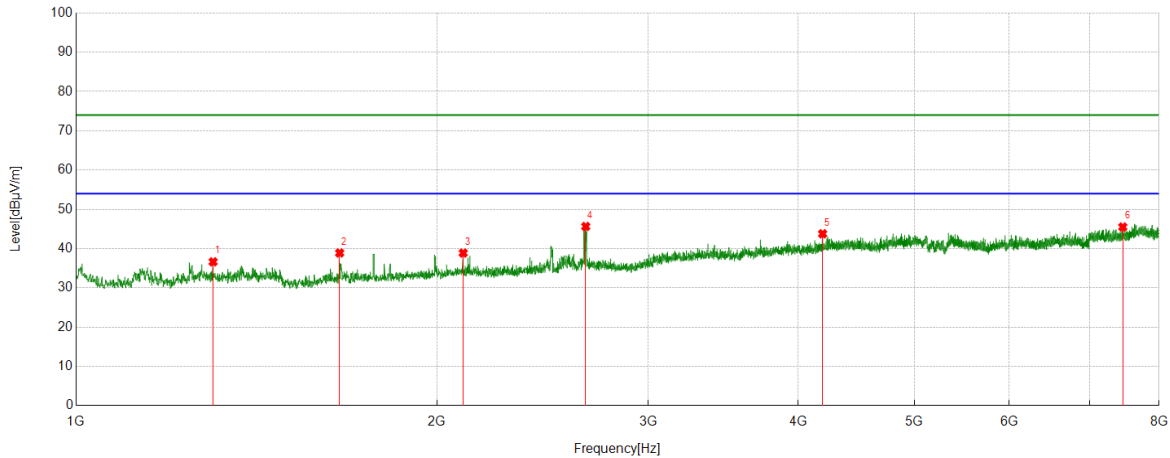
Test Mode	Channel	Polarization	Verdict
11AC80	5210	Vertical	PASS



No.	Frequency	Reading Level	Correct Factor	Result	Limit	Margin	Remark
	(MHz)	(dBuV/m)	(dB)	(dBuV/m)	(dBuV/m)	(dB)	
1	1301.0334	59.68	-20.26	39.42	74.00	34.58	peak
2	1662.7403	67.39	-18.06	49.33	74.00	24.67	peak
3	1991.7769	59.58	-16.04	43.54	74.00	30.46	peak
4	2654.5172	66.04	-12.80	53.24	74.00	20.76	peak
5	5113.3459	51.77	-2.11	49.66	74.00	24.34	peak
6	6984.1093	47.96	0.22	48.18	74.00	25.82	peak

- Remark: 1. Measurement = Reading Level + Correct Factor.
 2. If Peak Result complies with AV limit, AV Result is deemed to comply with AV limit.
 3. Test setup: RBW: 1 MHz, VBW: 3 MHz, Sweep time: auto.
 4. Peak: Peak detector.
 5. AVG: VBW refer to section 6.1.
 6. For below 6.5GHz part, filter losses were only considered in the spurious frequency bands and the authorized band were not corrected for Band Reject Filter losses.
 The proper operation of the transmitter prior to adding the filter to the measurement chain.
 7. Only the worst case emission was recorded, if it complies with the limit, the other emissions deemed to comply with the limit.
 8. Since non-restricted band peak emissions are less than the average limit, they also comply with the -27dBm/MHz (68.2dBuV/m) limit.

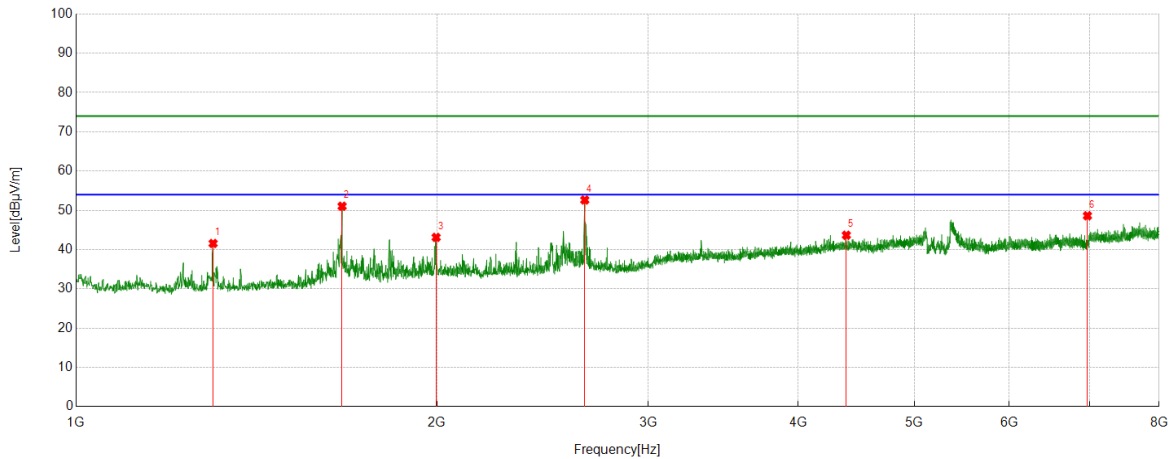
Test Mode	Channel	Polarization	Verdict
11AC80	5290	Horizontal	PASS



No.	Frequency	Reading Level	Correct Factor	Result	Limit	Margin	Remark
	(MHz)	(dBuV/m)	(dB)	(dBuV/m)	(dBuV/m)	(dB)	
1	1301.0334	56.89	-20.26	36.63	74.00	37.37	peak
2	1658.851	56.99	-18.10	38.89	74.00	35.11	peak
3	2103.0114	54.43	-15.56	38.87	74.00	35.13	peak
4	2660.7401	58.38	-12.75	45.63	74.00	28.37	peak
5	4193.1326	49.27	-5.50	43.77	74.00	30.23	peak
6	7461.718	43.61	1.89	45.50	74.00	28.50	peak

- Remark: 1. Measurement = Reading Level + Correct Factor.
 2. If Peak Result complies with AV limit, AV Result is deemed to comply with AV limit.
 3. Test setup: RBW: 1 MHz, VBW: 3 MHz, Sweep time: auto.
 4. Peak: Peak detector.
 5. AVG: VBW refer to section 6.1.
 6. For below 6.5GHz part, filter losses were only considered in the spurious frequency bands and the authorized band were not corrected for Band Reject Filter losses.
 The proper operation of the transmitter prior to adding the filter to the measurement chain.
 7. Only the worst case emission was recorded, if it complies with the limit, the other emissions deemed to comply with the limit.
 8. Since non-restricted band peak emissions are less than the average limit, they also comply with the -27dBm/MHz (68.2dBuV/m) limit.

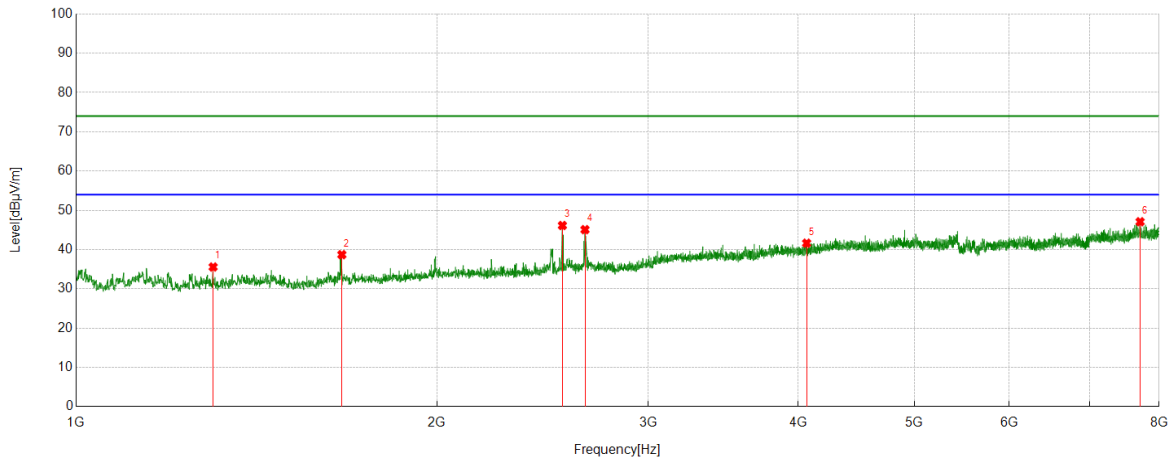
Test Mode	Channel	Polarization	Verdict
11AC80	5290	Vertical	PASS



No.	Frequency	Reading Level	Correct Factor	Result	Limit	Margin	Remark
	(MHz)	(dBuV/m)	(dB)	(dBuV/m)	(dBuV/m)	(dB)	
1	1301.0334	61.83	-20.26	41.57	74.00	32.43	peak
2	1666.6296	69.03	-17.99	51.04	74.00	22.96	peak
3	1996.444	59.09	-15.98	43.11	74.00	30.89	peak
4	2656.0729	65.42	-12.79	52.63	74.00	21.37	peak
5	4388.3765	48.21	-4.55	43.66	74.00	30.34	peak
6	6971.6635	48.50	0.12	48.62	74.00	25.38	peak

- Remark: 1. Measurement = Reading Level + Correct Factor.
 2. If Peak Result complies with AV limit, AV Result is deemed to comply with AV limit.
 3. Test setup: RBW: 1 MHz, VBW: 3 MHz, Sweep time: auto.
 4. Peak: Peak detector.
 5. AVG: VBW refer to section 6.1.
 6. For below 6.5GHz part, filter losses were only considered in the spurious frequency bands and the authorized band were not corrected for Band Reject Filter losses.
 The proper operation of the transmitter prior to adding the filter to the measurement chain.
 7. Only the worst case emission was recorded, if it complies with the limit, the other emissions deemed to comply with the limit.
 8. Since non-restricted band peak emissions are less than the average limit, they also comply with the -27dBm/MHz (68.2dBuV/m) limit.

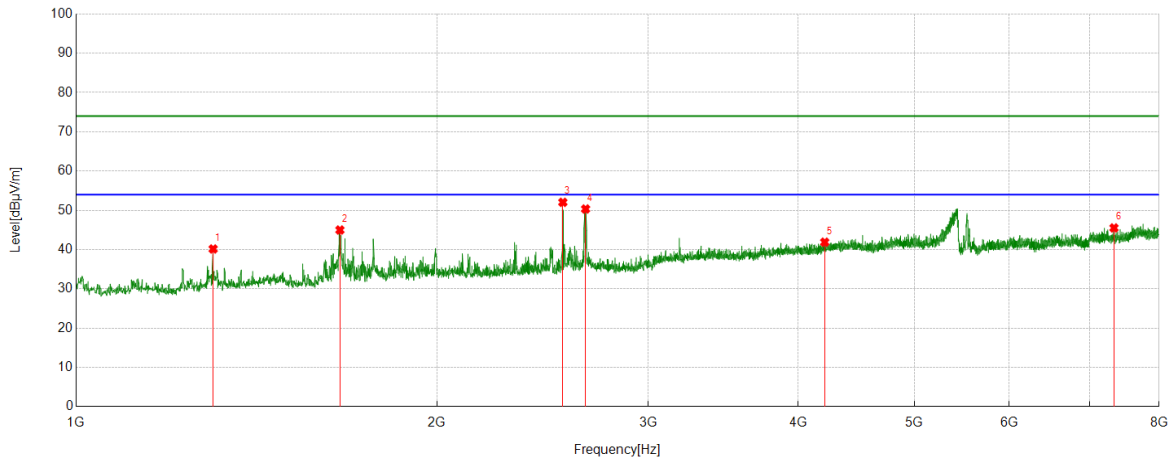
Test Mode	Channel	Polarization	Verdict
11AC80	5530	Horizontal	PASS



No.	Frequency	Reading Level	Correct Factor	Result	Limit	Margin	Remark
	(MHz)	(dBuV/m)	(dB)	(dBuV/m)	(dBuV/m)	(dB)	
1	1301.0334	55.75	-20.18	35.57	74.00	38.43	peak
2	1665.8518	56.69	-17.98	38.71	74.00	35.29	peak
3	2544.0605	59.00	-12.86	46.14	74.00	27.86	peak
4	2656.8508	57.60	-12.52	45.08	74.00	28.92	peak
5	4066.3407	48.19	-6.55	41.64	74.00	32.36	peak
6	7713.746	44.50	2.59	47.09	74.00	26.91	peak

- Remark: 1. Measurement = Reading Level + Correct Factor.
 2. If Peak Result complies with AV limit, AV Result is deemed to comply with AV limit.
 3. Test setup: RBW: 1 MHz, VBW: 3 MHz, Sweep time: auto.
 4. Peak: Peak detector.
 5. AVG: VBW refer to section 6.1.
 6. For below 6.5GHz part, filter losses were only considered in the spurious frequency bands and the authorized band were not corrected for Band Reject Filter losses.
 The proper operation of the transmitter prior to adding the filter to the measurement chain.
 7. Only the worst case emission was recorded, if it complies with the limit, the other emissions deemed to comply with the limit.
 8. Since non-restricted band peak emissions are less than the average limit, they also comply with the -27dBm/MHz (68.2dBuV/m) limit.

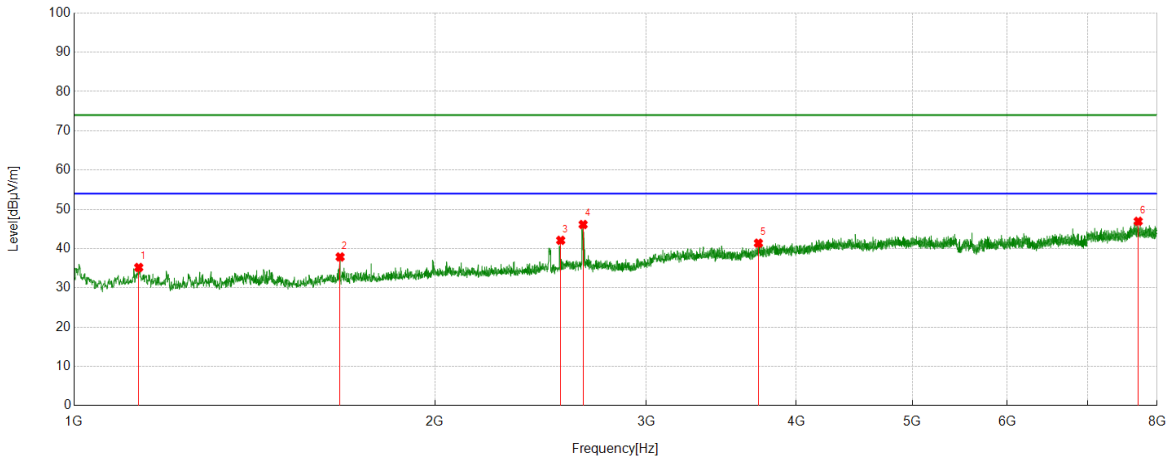
Test Mode	Channel	Polarization	Verdict
11AC80	5530	Vertical	PASS



No.	Frequency	Reading Level	Correct Factor	Result	Limit	Margin	Remark
	(MHz)	(dBuV/m)	(dB)	(dBuV/m)	(dBuV/m)	(dB)	
1	1301.0334	60.34	-20.18	40.16	74.00	33.84	peak
2	1659.6288	63.07	-18.08	44.99	74.00	29.01	peak
3	2546.394	64.93	-12.89	52.04	74.00	21.96	peak
4	2659.9622	62.82	-12.48	50.34	74.00	23.66	peak
5	4210.2456	46.83	-4.94	41.89	74.00	32.11	peak
6	7336.4818	44.25	1.27	45.52	74.00	28.48	peak

- Remark: 1. Measurement = Reading Level + Correct Factor.
 2. If Peak Result complies with AV limit, AV Result is deemed to comply with AV limit.
 3. Test setup: RBW: 1 MHz, VBW: 3 MHz, Sweep time: auto.
 4. Peak: Peak detector.
 5. AVG: VBW refer to section 6.1.
 6. For below 6.5GHz part, filter losses were only considered in the spurious frequency bands and the authorized band were not corrected for Band Reject Filter losses.
 The proper operation of the transmitter prior to adding the filter to the measurement chain.
 7. Only the worst case emission was recorded, if it complies with the limit, the other emissions deemed to comply with the limit.
 8. Since non-restricted band peak emissions are less than the average limit, they also comply with the -27dBm/MHz (68.2dBuV/m) limit.

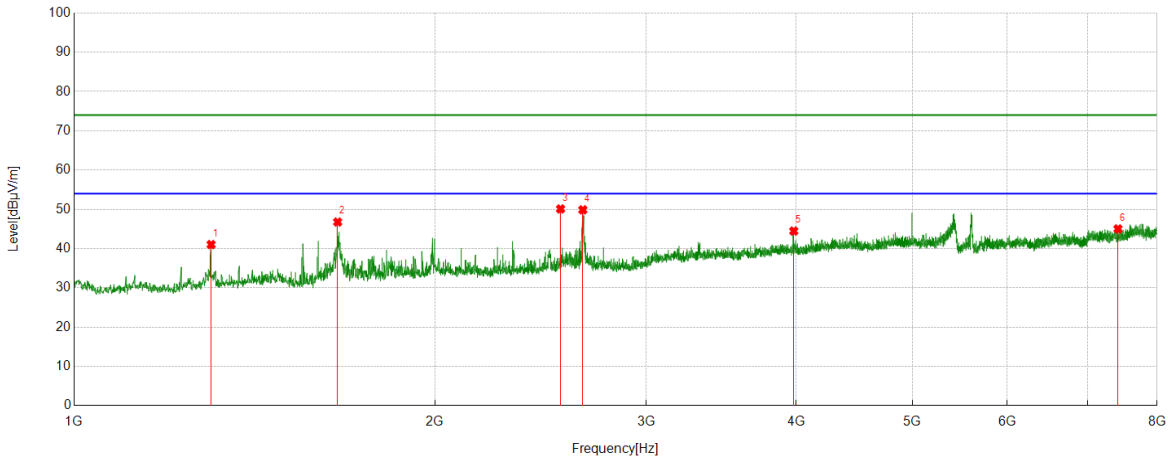
Test Mode	Channel	Polarization	Verdict
11AC80	5610	Horizontal	PASS



No.	Frequency	Reading Level	Correct Factor	Result	Limit	Margin	Remark
	(MHz)	(dBuV/m)	(dB)	(dBuV/m)	(dBuV/m)	(dB)	
1	1132.2369	56.41	-21.22	35.19	74.00	38.81	peak
2	1666.6296	55.84	-17.97	37.87	74.00	36.13	peak
3	2545.6162	54.98	-12.88	42.10	74.00	31.90	peak
4	2657.6286	58.64	-12.51	46.13	74.00	27.87	peak
5	3720.969	48.41	-7.03	41.38	74.00	32.62	peak
6	7715.3017	44.38	2.56	46.94	74.00	27.06	peak

- Remark: 1. Measurement = Reading Level + Correct Factor.
 2. If Peak Result complies with AV limit, AV Result is deemed to comply with AV limit.
 3. Test setup: RBW: 1 MHz, VBW: 3 MHz, Sweep time: auto.
 4. Peak: Peak detector.
 5. AVG: VBW refer to section 6.1.
 6. For below 6.5GHz part, filter losses were only considered in the spurious frequency bands and the authorized band were not corrected for Band Reject Filter losses.
 The proper operation of the transmitter prior to adding the filter to the measurement chain.
 7. Only the worst case emission was recorded, if it complies with the limit, the other emissions deemed to comply with the limit.
 8. Since non-restricted band peak emissions are less than the average limit, they also comply with the -27dBm/MHz (68.2dBuV/m) limit.

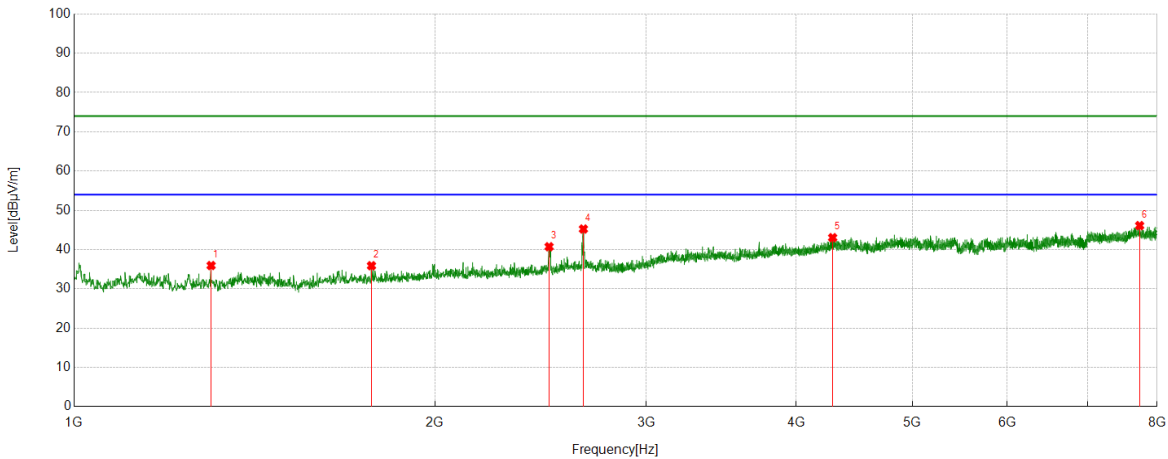
Test Mode	Channel	Polarization	Verdict
11AC80	5610	Vertical	PASS



No.	Frequency	Reading Level	Correct Factor	Result	Limit	Margin	Remark
	(MHz)	(dBuV/m)	(dB)	(dBuV/m)	(dBuV/m)	(dB)	
1	1301.0334	61.21	-20.18	41.03	74.00	32.97	peak
2	1658.851	64.84	-18.08	46.76	74.00	27.24	peak
3	2544.8383	62.97	-12.87	50.10	74.00	23.90	peak
4	2656.0729	62.41	-12.54	49.87	74.00	24.13	peak
5	3982.3314	50.53	-6.06	44.47	74.00	29.53	peak
6	7421.269	43.81	1.20	45.01	74.00	28.99	peak

- Remark: 1. Measurement = Reading Level + Correct Factor.
 2. If Peak Result complies with AV limit, AV Result is deemed to comply with AV limit.
 3. Test setup: RBW: 1 MHz, VBW: 3 MHz, Sweep time: auto.
 4. Peak: Peak detector.
 5. AVG: VBW refer to section 6.1.
 6. For below 6.5GHz part, filter losses were only considered in the spurious frequency bands and the authorized band were not corrected for Band Reject Filter losses.
 The proper operation of the transmitter prior to adding the filter to the measurement chain.
 7. Only the worst case emission was recorded, if it complies with the limit, the other emissions deemed to comply with the limit.
 8. Since non-restricted band peak emissions are less than the average limit, they also comply with the -27dBm/MHz (68.2dBuV/m) limit.

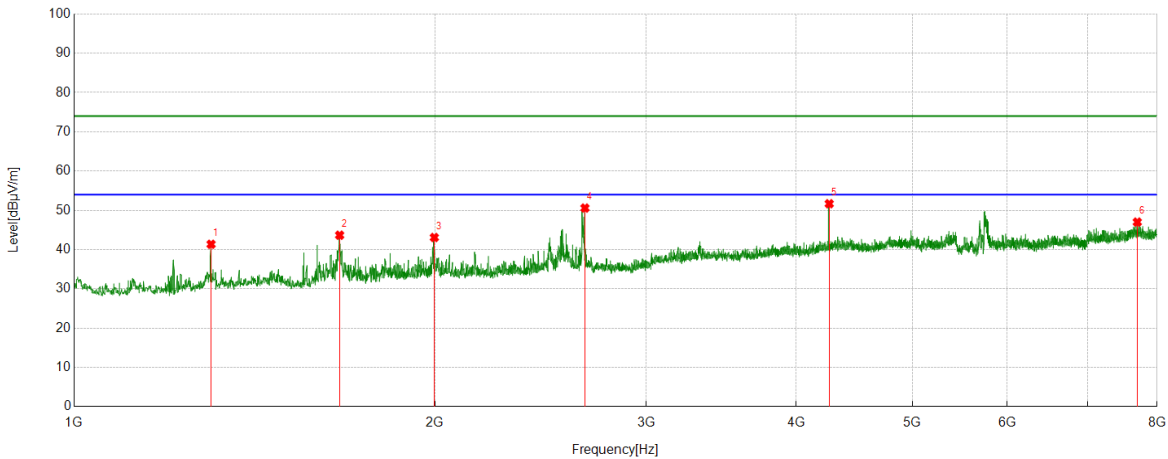
Test Mode	Channel	Polarization	Verdict
11AC80	5690	Horizontal	PASS



No.	Frequency	Reading Level	Correct Factor	Result	Limit	Margin	Remark
	(MHz)	(dBuV/m)	(dB)	(dBuV/m)	(dBuV/m)	(dB)	
1	1301.0334	56.12	-20.18	35.94	74.00	38.06	peak
2	1770.0856	53.49	-17.60	35.89	74.00	38.11	peak
3	2489.61	54.68	-13.95	40.73	74.00	33.27	peak
4	2659.1844	57.73	-12.49	45.24	74.00	28.76	peak
5	4291.1435	47.36	-4.32	43.04	74.00	30.96	peak
6	7736.304	43.34	2.77	46.11	74.00	27.89	peak

- Remark: 1. Measurement = Reading Level + Correct Factor.
 2. If Peak Result complies with AV limit, AV Result is deemed to comply with AV limit.
 3. Test setup: RBW: 1 MHz, VBW: 3 MHz, Sweep time: auto.
 4. Peak: Peak detector.
 5. AVG: VBW refer to section 6.1.
 6. For below 6.5GHz part, filter losses were only considered in the spurious frequency bands and the authorized band were not corrected for Band Reject Filter losses.
 The proper operation of the transmitter prior to adding the filter to the measurement chain.
 7. Only the worst case emission was recorded, if it complies with the limit, the other emissions deemed to comply with the limit.
 8. Since non-restricted band peak emissions are less than the average limit, they also comply with the -27dBm/MHz (68.2dBuV/m) limit.

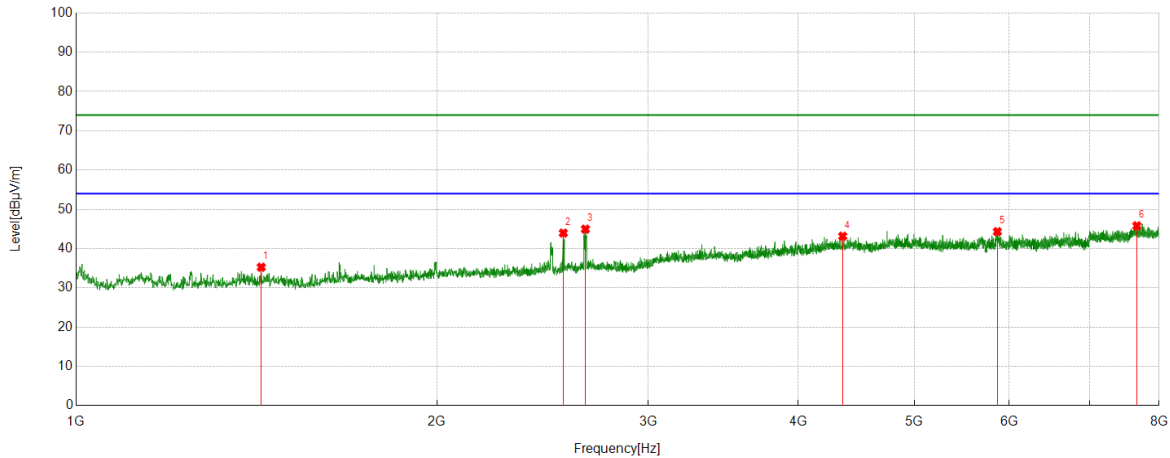
Test Mode	Channel	Polarization	Verdict
11AC80	5690	Vertical	PASS



No.	Frequency	Reading Level	Correct Factor	Result	Limit	Margin	Remark
	(MHz)	(dBuV/m)	(dB)	(dBuV/m)	(dBuV/m)	(dB)	
1	1301.0334	61.54	-20.18	41.36	74.00	32.64	peak
2	1665.0739	61.66	-17.99	43.67	74.00	30.33	peak
3	1997.2219	58.92	-15.84	43.08	74.00	30.92	peak
4	2666.963	63.02	-12.44	50.58	74.00	23.42	peak
5	4263.1403	56.71	-5.03	51.68	74.00	22.32	peak
6	7701.3001	44.56	2.45	47.01	74.00	26.99	peak

- Remark: 1. Measurement = Reading Level + Correct Factor.
 2. If Peak Result complies with AV limit, AV Result is deemed to comply with AV limit.
 3. Test setup: RBW: 1 MHz, VBW: 3 MHz, Sweep time: auto.
 4. Peak: Peak detector.
 5. AVG: VBW refer to section 6.1.
 6. For below 6.5GHz part, filter losses were only considered in the spurious frequency bands and the authorized band were not corrected for Band Reject Filter losses.
 The proper operation of the transmitter prior to adding the filter to the measurement chain.
 7. Only the worst case emission was recorded, if it complies with the limit, the other emissions deemed to comply with the limit.
 8. Since non-restricted band peak emissions are less than the average limit, they also comply with the -27dBm/MHz (68.2dBuV/m) limit.

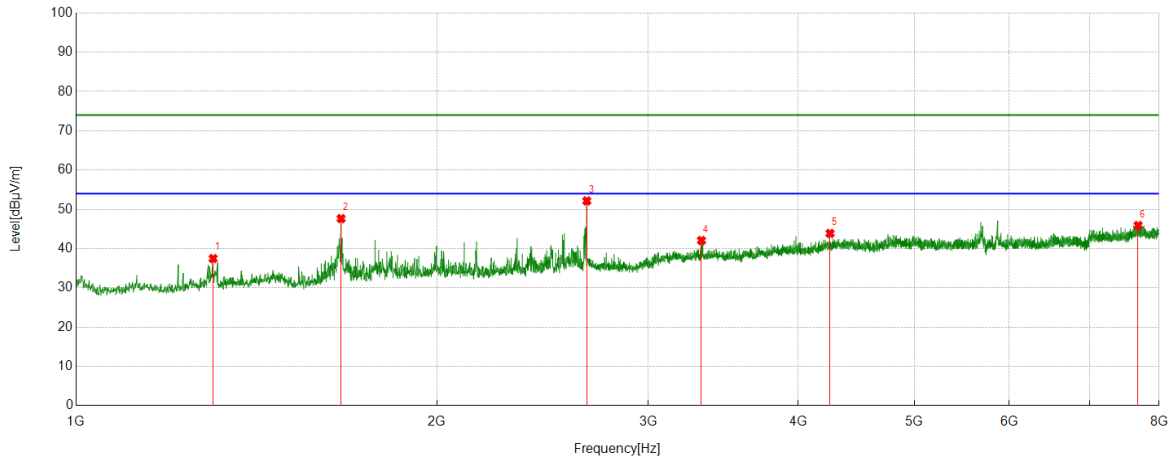
Test Mode	Channel	Polarization	Verdict
11AC80	5775	Horizontal	PASS



No.	Frequency	Reading Level	Correct Factor	Result	Limit	Margin	Remark
	(MHz)	(dBuV/m)	(dB)	(dBuV/m)	(dBuV/m)	(dB)	
1	1427.0474	55.13	-19.87	35.26	74.00	38.74	peak
2	2548.7276	57.43	-13.48	43.95	74.00	30.05	peak
3	2659.1844	57.84	-12.89	44.95	74.00	29.05	peak
4	4358.0398	48.19	-5.04	43.15	74.00	30.85	peak
5	5864.7628	44.26	0.06	44.32	74.00	29.68	peak
6	7666.2963	43.53	2.27	45.80	74.00	28.20	peak

- Remark: 1. Measurement = Reading Level + Correct Factor.
 2. If Peak Result complies with AV limit, AV Result is deemed to comply with AV limit.
 3. Test setup: RBW: 1 MHz, VBW: 3 MHz, Sweep time: auto.
 4. Peak: Peak detector.
 5. AVG: VBW refer to section 6.1.
 6. For below 6.5GHz part, filter losses were only considered in the spurious frequency bands and the authorized band were not corrected for Band Reject Filter losses.
 The proper operation of the transmitter prior to adding the filter to the measurement chain.
 7. Only the worst case emission was recorded, if it complies with the limit, the other emissions deemed to comply with the limit.
 8. Since non-restricted band peak emissions are less than the average limit, they also comply with the -27dBm/MHz (68.2dBuV/m) limit.

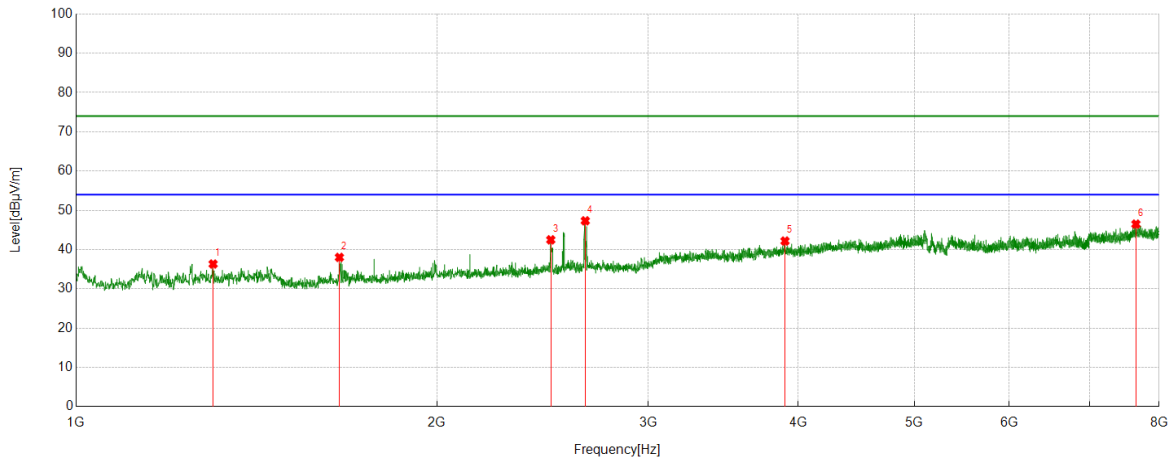
Test Mode	Channel	Polarization	Verdict
11AC80	5775	Vertical	PASS



No.	Frequency	Reading Level	Correct Factor	Result	Limit	Margin	Remark
	(MHz)	(dBuV/m)	(dB)	(dBuV/m)	(dBuV/m)	(dB)	
1	1301.0334	57.65	-20.18	37.47	74.00	36.53	peak
2	1663.5182	65.64	-17.99	47.65	74.00	26.35	peak
3	2666.1851	65.04	-12.89	52.15	74.00	21.85	peak
4	3322.7025	51.15	-9.08	42.07	74.00	31.93	peak
5	4253.0281	48.68	-4.80	43.88	74.00	30.12	peak
6	7684.1871	43.68	2.21	45.89	74.00	28.11	peak

- Remark: 1. Measurement = Reading Level + Correct Factor.
 2. If Peak Result complies with AV limit, AV Result is deemed to comply with AV limit.
 3. Test setup: RBW: 1 MHz, VBW: 3 MHz, Sweep time: auto.
 4. Peak: Peak detector.
 5. AVG: VBW refer to section 6.1.
 6. For below 6.5GHz part, filter losses were only considered in the spurious frequency bands and the authorized band were not corrected for Band Reject Filter losses.
 The proper operation of the transmitter prior to adding the filter to the measurement chain.
 7. Only the worst case emission was recorded, if it complies with the limit, the other emissions deemed to comply with the limit.
 8. Since non-restricted band peak emissions are less than the average limit, they also comply with the -27dBm/MHz (68.2dBuV/m) limit.

Test Mode	Channel	Polarization	Verdict
11AX20	5180	Horizontal	PASS



No.	Frequency	Reading Level	Correct Factor	Result	Limit	Margin	Remark
	(MHz)	(dBuV/m)	(dB)	(dBuV/m)	(dBuV/m)	(dB)	
1	1301.0334	56.59	-20.26	36.33	74.00	37.67	peak
2	1658.0731	56.12	-18.10	38.02	74.00	35.98	peak
3	2488.0542	56.35	-13.86	42.49	74.00	31.51	peak
4	2658.4065	60.10	-12.77	47.33	74.00	26.67	peak
5	3900.6556	48.73	-6.55	42.18	74.00	31.82	peak
6	7652.2947	44.49	2.00	46.49	74.00	27.51	peak

- Remark: 1. Measurement = Reading Level + Correct Factor.
 2. If Peak Result complies with AV limit, AV Result is deemed to comply with AV limit.
 3. Test setup: RBW: 1 MHz, VBW: 3 MHz, Sweep time: auto.
 4. Peak: Peak detector.
 5. AVG: VBW refer to section 6.1.
 6. For below 6.5GHz part, filter losses were only considered in the spurious frequency bands and the authorized band were not corrected for Band Reject Filter losses.
 The proper operation of the transmitter prior to adding the filter to the measurement chain.
 7. Only the worst case emission was recorded, if it complies with the limit, the other emissions deemed to comply with the limit.
 8. Since non-restricted band peak emissions are less than the average limit, they also comply with the -27dBm/MHz (68.2dBuV/m) limit.