

## FCC Compliance

This device complies with part 15 of the FCC Rules. Operation is subject to the following two conditions:

1. This device may not cause harmful interference.
2. This device must accept any interference received, including interference that may cause undesired operation.

Any changes or modifications not expressly approved by the party responsible for compliance could void the user's authority to operate the equipment.

NOTE: This equipment has been tested and found to comply with the limits for a Class B digital device, pursuant to Part 15 of the FCC Rules. These limits are designed to provide reasonable protection against harmful interference in a residential installation. This equipment generates, uses and can radiate radio frequency energy and, if not installed and used in accordance with the instructions, may cause harmful interference to radio communications.

However, there is no guarantee that interference will not occur in a particular installation. If this equipment does cause harmful interference to radio or television reception, which can be determined by turning the equipment off and on, the user is encouraged to try to correct the interference by one or more of the following measures:

1. Reorient or relocate the receiving antenna.
2. Increase the separation between the equipment and receiver.
3. Connect the equipment into an outlet on a circuit different from that to which the receiver is connected.
4. Consult the dealer or an experienced radio/TV technician for help.

To maintain compliance with FCC's RF Exposure guidelines, This equipment should be installed and operated with minimum 20 cm distance between the radiator and your body. Use only the supplied antenna.



Additional Documents

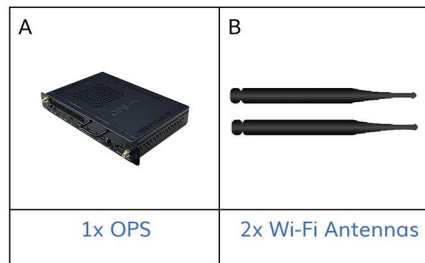
## To Contact Support

[support@onescreensolutions.com](mailto:support@onescreensolutions.com)

[onescreensolutions.com/support](https://onescreensolutions.com/support)

# OneScreen OPS Installation Guide

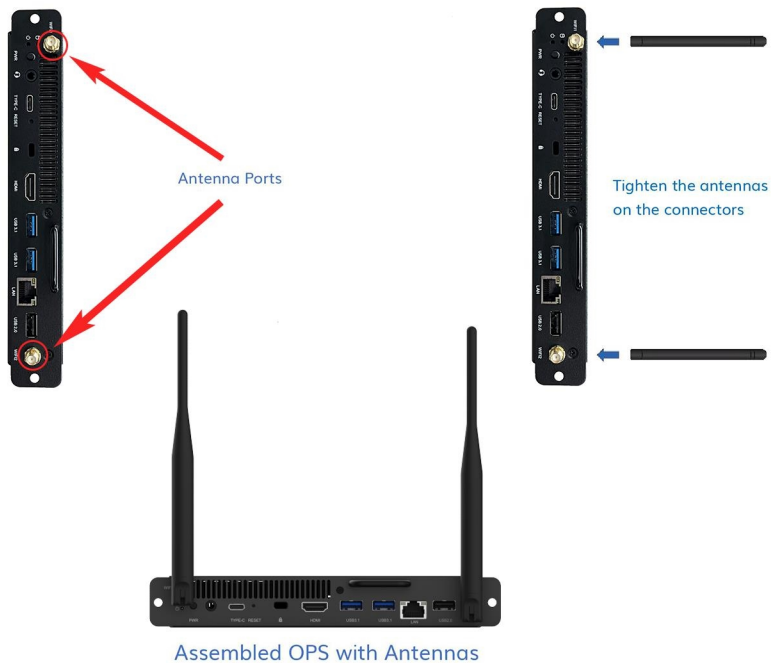
## What's included:



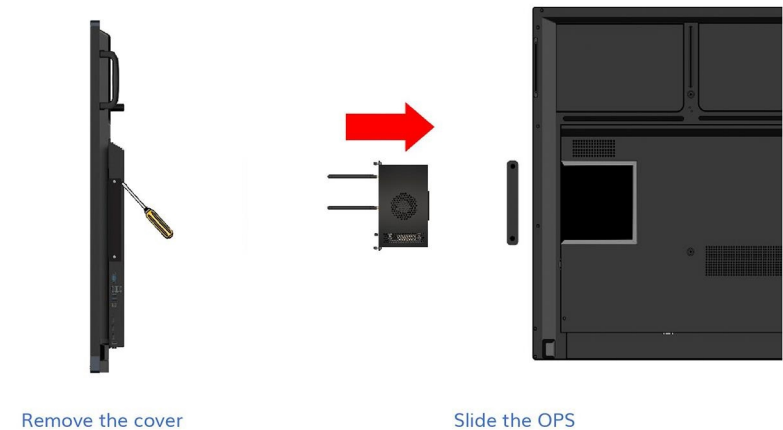
Note: The images in the entire document are illustrations for reference purposes and do not represent the exact shape or relative sizes of the parts included.

## Assembly instructions:

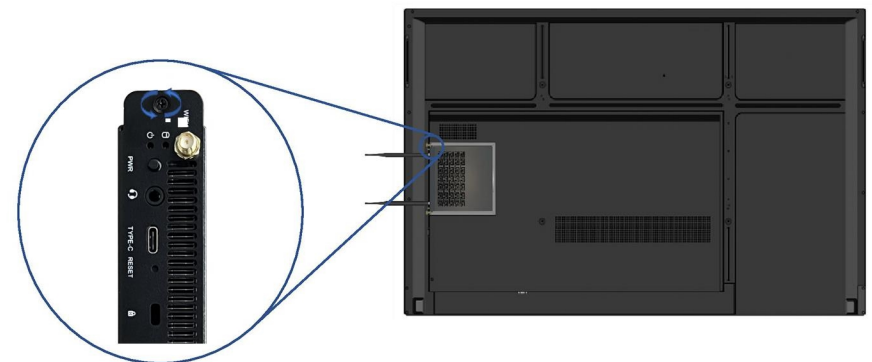
**Step 1:** Connect the 2x Wi-Fi antennas to your OneScreen OPS by tightening them with your hands onto the gold-colored antenna connectors on the back of the OPS.



**Step 3:** Remove the OPS cover above the ports of the panel with a screwdriver and slide the OPS into the OPS slot located at the back of your OneScreen Panel with the OPS' fan grill facing outwards from the screen.



**Step 4:** Tighten the 2x screws onto the back of the OPS to secure it in place.



**Step 5:** Press the small Power Button on the back of the OPS to power it on. It can also be powered on from the 'Source' option in your OneScreen Panel.

