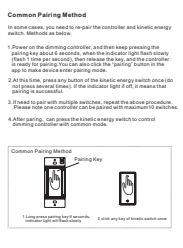
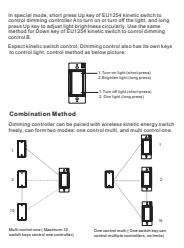
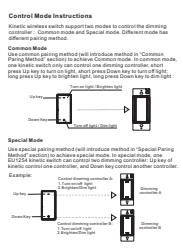
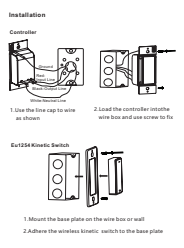


INSTRUCTIONS

Introduction
 ERC111 smart dimming controller can be controlled with ERC124 wireless kinetic switch, on battery or installed during use. In use ERC124 module made up can be controlled remotely with mobile APP and also can use voice control with Amazon Alexa.

Product parameters
 Controller Model: ERC111
 Kinetic Switch: ERC124
 Controller Voltage: AC110V 50/60Hz
 Rated Load: 200W
 Wireless Communication: 433.92 MHz, 8.875 MHz
 Control Distance: 50m (Outdoor), 30m (Indoor)
 Sensitivity: 11 (Default)
 Storage Capacity: Maximum 10 switch keys can be paired
 Dimming controller dimensions: LxWxH: 60x80x15mm
 Kinetic switch dimensions: LxWxHxH: 60x30x15x15mm
 Switch base plate dimensions: LxWxH: 60x30x15mm
 Temperature: -15°C ~ +45°C



Special Pairing Method

1. Power on the dimming controller, and then keep pressing the pairing key about 8 seconds, when the indicator light flash slowly (flash 1 time per second), then release the key, up the controller to reach the pairing key on the controller. The pairing button in the key to make the kinetic pairing mode.
2. After pairing, press appointed key of the kinetic energy switch four times within 5 seconds, which the indicator light flash slowly (flash 1 time per second), then release the key, up the controller to reach the pairing key on the controller. The pairing button in the key to make the kinetic pairing mode.
3. If need to pair with multiple switches, repeat the above procedure. Please note: one controller can be paired with maximum 10 switches.
4. After pairing, can press the kinetic energy switch to control dimming controller with special mode.

Special Pairing Method

Clear Pairing

If you want to clear pairing switch and controller. This should be done by pressing key "12" within 5 seconds on the left (Control Mode) or click on the "Clear Pairing" button in the app.

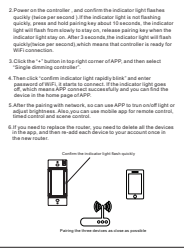
1. After clearing the pairing, the kinetic switch will be "single pairing controller".
2. After clearing the pairing, the kinetic switch will be "single pairing controller".
3. Click the "+" button to long press (control mode) and then select "Single pairing controller".
4. Then click "Verify" indicator light rapidly blink" and enter the pairing key of the kinetic switch. If the indicator light goes off, it means that pairing is successful. If not, you can click the "+" button to long press (control mode) and then select "Single pairing controller".
5. After the pairing with network, we can use APP to turn off light or adjust brightness. And you can use mobile app for remote control. Please control and make control.
6. If you want to register the order, you need to delete all the devices in the app, and then re-add each device to your account once in the new order.

APP download

This controller can use mobile APP for remote control. Search "Kinetic switch" in App Store or Google Play and download, or scan below QR code to download.

Connect WiFi Method

1. Scan the QR code to download the app and follow the prompts to register your account in the app.



Instruction of Dimming Function

1. ERC111 controller contains MOSFET components. Support Reverse Phase dimming, and also support Forward Phase dimming. So can LED light. If LED light is not supported, please use the dimmable LED light bulb. If LED light is not supported, please use the dimmable LED light bulb. If LED light is not supported, please use the dimmable LED light bulb.

2. This controller only can be paired with ERC124 kinetic switch. After pairing, long press Up key of kinetic switch to brighten light, and if long press Down key of kinetic switch to dim light, and long press Control key to adjust brightness. Long press Up key of kinetic switch to brighten light, and long press Down key of kinetic switch to dim light, and long press Control key to adjust brightness.

Troubleshooting

WiFi Connection failed

Troubleshooting method: Please confirm the indicator light is blink rapidly (flash one per second). If not blink rapidly, please press the pairing key on the controller to reach the pairing key on the controller. (within 5 meters)

1. Make sure the indicator light is on.
2. Troubleshooting method: Adjust the number of the router connected with Controller. Usually, only 10 devices can be connected with Controller. Please upgrade router and close devices not needed.
3. Controller can not work after power on.
4. Troubleshooting method: If the load exceed the rated current or rated power, the load may stop. Please check the load. If possible, if it does not respond, please replace a suitable lamp.



Caution:

This device complies with Part 15 of the FCC rules and Industry Canada license-exempt RSS standard(s). Operation is subject to the following two conditions: (1) this device may not cause harmful interference, and (2) this device must accept any interference received, including interference that may cause undesired operation.

The manufacturer is not responsible for any radio or TV interference caused by unauthorized modifications or change to this equipment. Such modifications or change could void the user's authority to operate the equipment.

This radio transmitter (identify the device by certification number or model number if Category II) has been approved by Industry Canada to operate with the antenna types listed below with the maximum permissible gain indicated. Antenna types not included in this list, having a gain greater than the maximum gain indicated for that type, are strictly prohibited for use with this device.

This equipment has been tested and found to comply with the limits for a Class B digital device, pursuant to part 15 of the FCC Rules. These limits are designed to provide reasonable protection against harmful interference in a residential installation. This equipment generates, uses and can radiate radio frequency energy and, if not installed and used in accordance with the instructions, may cause harmful interference to radio communications. However, there is no guarantee that interference will not occur in a particular installation. If this equipment does cause harmful interference to radio or television reception, which can be determined by turning the equipment off and on, the user is encouraged to try to correct the interference by one or more of the following measures:

- Reorient or relocate the receiving antenna.
- Increase the separation between the equipment and receiver.
- Connect the equipment into an outlet on a circuit different from that to which the receiver is connected.
- Consult the dealer or an experienced radio/TV technician for help.

The device has been evaluated to meet general RF exposure requirement.

To maintain compliance with FCC's RF exposure guidelines, this equipment should be installed and operated with a minimum distance of 20cm between the radiator and your body.