

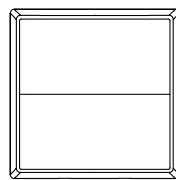
Wireless Kinetic Energy Switch

Installation Instruction

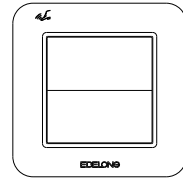
Model: EQ0114, EQ0122, EE0154, EQ0214, EQ0222, EE0254, EQ0314, EQ0322, EE0354



Before use the product, please read carefully the instructions and install the product with reference to it.



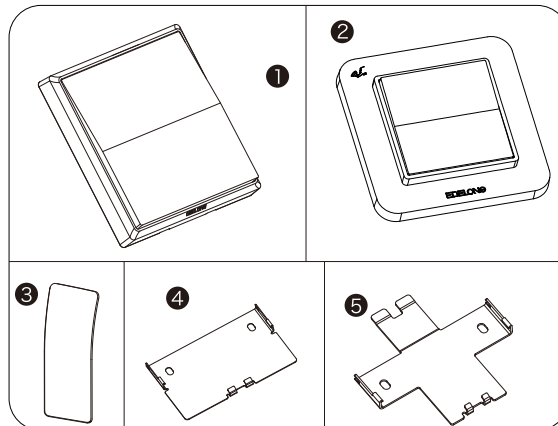
V/Q/E1 series



E2 series

The diagrams in this instruction are for reference only, along with our product development, the switches and accessories you obtained could be different from them. Sorry for any inconvenience brought to you by this.

Component diagrams

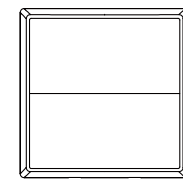


- ① switch block (V/Q/E1 series)
- ② switch block (E2 series)
- ③ double sided hesive tape
- ④ fixation plate (V/Q/E1 only)
- ⑤ cross shaped fixation plate (optional for V/Q/E1 series only)

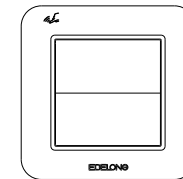
Specifications and models

wireless kinetic energy switch technical parameters

Power supply: Micro energy acquisition and self generating(no battery)
 Communication mode: Ebelong1.1
 Operating frequency: 433MHz
 Control distance: 160m (outdoor), 30m (indoor)
 Control method : pairing with EBELONG wireless receiving controller
 Quantity of keys: 1-3 keys
 Usage:200000 times on and off
 Execution standard : Q/EBL01-2015



V/Q/E1 series



E2 series

* Distance comes from EBELONG laboratory test result. The actual distance in practical use might vary due to environmental difference.
 This switch is for indoor lighting control use only.
 The best way to use this switch is mount it on wall, we do not suggest using it remotely because it could cause the switch be damaged or lost.
 For control method please refer to the installation instruction of EBELONG wireless receiving controller.

* Warning: this switch has precision devices inside. Drop of the switch could cause damage on it.

Installation Methods

Three installation methods for wireless kinetic energy switch:

① Adhesive installation method:

- 1-1 Applicable environment: glass, marble, ceramic tile and other smooth surface
- 1-2 Choose the installation position; clean the surface to ensure no oil/water etc.
- 1-3 Take the double sided hesive tape, paste the tape on the bottom of switch in accordance with the mark on the bottom (See diagram 1-1A-01/1-1A-02)

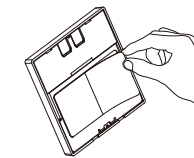


diagram 1-1A-01
V/Q/E1 series



diagram 1-1A-02
E2 series

- 1-4 Paste the switch on surface; it will be fixed completely after 24 hours

Warranty Card

Dear users:

Thank you for choosing EBELONG wireless kinetic energy switch series product. In order to ensure that you can fully enjoy our after sale service, please read carefully the instructions after the purchase and keep properly the warranty card.

Product model	
Purchase date	
Contact name	
Contact telephone number	
Contact address	
Vendor name	
Vendor Telephone number	
Vendor address	
Vendor seal	
User information	

The card can't be altered without authorization. Please keep the packaging box.

Warranty Card

Every EBELONG product has passed the strict quality inspection before it leaves the factory. Shenzhen EBELONG Technology Co., Ltd provides 2 years warranty for users under normal use condition (not including artificial improper operation according to the standard). Within the 2 years warranty period, EBELONG Technology Co., Ltd will be responsible for the repair, free replacement of parts or entire product.

Free warranty service regulations:

(All of the following conditions must be met)

1. Warranty period starts from the valid purchase invoice date.
2. Product shall not be dissembled with our permission.
3. No destructive damage caused by human factors.
4. Defined as functional fault (under normal use condition)
5. Contact the nearest agency after identification of problems. Bring product which needs to be repaired or exchanged, effective purchase invoice and warranty to agency.

National free technical support hotline: +86-755-27888758
 Monday-Friday, 9:00AM-6:00PM
 After sale service terms and latest agency network information please visit: www.iebelong.com



② Plate installation method for V/Q/E1 series

- 2-1 Applicable environment: flat wall such as normal lime wall, painted wall, etc...
- 2-2 First remove the fixation plate from the switch block, operation steps are as follow:
Step 1:Remove the outer frame from the switch block (refer to diagram 2-2A)
Step 2:Remove the fixation plate by pushing the fixation plate 5mm downwards then tripping out (refer to diagram 2-2B)
- 2-3 Use expansion screws to fix the fixation plate on the wall. Attention that the position of screws shall be in the middle of the mounting holes, the direction can't be mistaken. (refer to diagram 2-2C)
- 2-4 Follow the guide way to embed the switch block on the fixation plate, and then move downwards 5mm to be in place (refer to diagram 2-2D)



diagram 2-2A



diagram 2-2B



diagram 2-2C



diagram 2-2D

③ Screw installation method for E2 series

- 3-1 Remove the outer frame from the switch block (refer to diagram 3-1A)
- 3-2 Use expansion screws to fix the switch block on the wall through the two mounting holes on the switch base board (refer to diagram 3-2B)
- 3-3 Put the outer frame back onto the switch block, make sure the EBELONG logo is in the bottom (refer to diagram 3-3C)

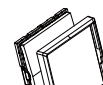


diagram 3-1A



diagram 3-1B



diagram 3-2B



diagram 3-3C

④ Plate installation method for V/Q/E1 series

- (Cross shaped fixation plate is not usable on E2 series product)
- 4-1 Applicable condition: Normal type 86 connection box (upgrade of existing connection box)
 - 4-2 Remove the fixation plate from the switch block, steps as in 2-2
Step 1:Remove the outer frame from the switch block (refer to diagram 2-2A)
Step 2:Remove the fixation plate by pushing the fixation plate 5mm downwards then tripping out (refer to diagram 2-2B)
 - 4-3 Use screws to fix the cross shaped fixation plate on the connection box. Attention that the torque shall not be superior than 18kgf to avoid deformation of fixation plate; (refer to diagram 2-3A)

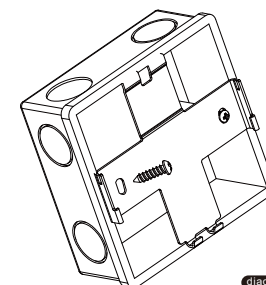
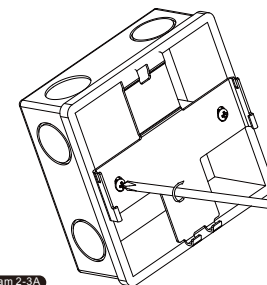


diagram 2-3A



- 3-4 Follow the guide way to embed the switch block on the fixation plate, and then move downwards 5mm to be in place (refer to diagram 2-2C)
- 3-5 Buckle the outer frame into the switch block, product logo (EBELONG) in the bottom (refer to diagram 2-2D, 2-3B)

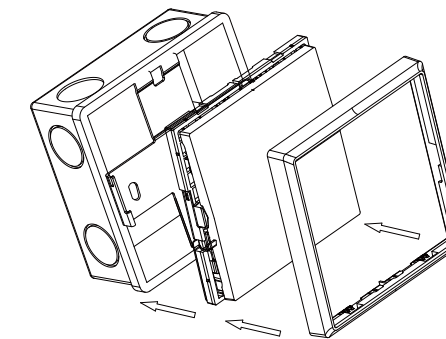


diagram 2-3B

CERTIFICATE INSPECTED

Statement: Wireless kinetic energy switch is a product of Shenzhen EBELONG Technology Co. Ltd. The product specification and information is for reference only. Update of content will not be further notified. Except for special agreement, information from this manual shall not constitute any form of responsibility. Without written approval from Shenzhen EBELONG Technology Co., Ltd, no unit is allowed to copy, translate any content from this manual, and shall not in any forms or by any means (electronic, mechanical photocopying, recording etc) diffuse product information for commercial profit purpose.

Shenzhen EBELONG Technology Co., Ltd
 Address: #607, Block A, Shenzhen Wisdom Innovation Center, QianJin 2nd Road, BaoAn District, Shenzhen, P.R.China
 Website: www.iebelong.com
 Tel: +86-755-27888758
 Version: 2015V2



FCC Part 15.19 Warning Statement

THIS DEVICE COMPLIES WITH PART 15 OF THE FCC RULES. OPERATION IS SUBJECT TO THE FOLLOWING TWO CONDITIONS: (1) THIS DEVICE MAY NOT CAUSE HARMFUL INTERFERENCE, AND (2) THIS DEVICE MUST ACCEPT ANY INTERFERENCE RECEIVED, INCLUDING INTERFERENCE THAT MAY CAUSE UNDESIRE OPERATION.

FCC Part 15.21 Warning Statement

NOTE: THE GRANTEE IS NOT RESPONSIBLE FOR ANY CHANGES OR MODIFICATIONS NOT EXPRESSLY APPROVED BY THE PARTY RESPONSIBLE FOR COMPLIANCE. SUCH MODIFICATIONS COULD VOID THE USER'S AUTHORITY TO OPERATE THE EQUIPMENT.

FCC Part 15.105 Warning Statement

Note: This equipment has been tested and found to comply with the limits for a Class B digital device, pursuant to part 15 of the FCC Rules. These limits are designed to provide reasonable protection against harmful interference in a residential installation. This equipment generates, uses and can radiate radio frequency energy and, if not installed and used in accordance with the instructions, may cause harmful interference to radio communications. However, there is no guarantee that interference will not occur in a particular installation. If this equipment does cause harmful interference to radio or television reception, which can be determined by turning the equipment off and on, the user is encouraged to try to correct the interference by one or more of the following measures:

- Reorient or relocate the receiving antenna.
- Increase the separation between the equipment and receiver.
- Connect the equipment into an outlet on a circuit different from that to which the receiver is connected.
- Consult the dealer or an experienced radio/TV technician for help.

RF warning statement:

The device has been evaluated to meet general RF exposure requirement. The device can be used in portable exposure condition without restriction.