

# **LB-LINK Antenna Specification**

**address information**

**TEL:0755-29807378**

**FAX:0755-28029002**

**LB-LINK PN: 10018310**

**sales:sales01@b-link.net.cn**

**support:sales02@b-link.net.cn**

**Date: 2018/05/09**

## Revision History

Revision	Date	Note
V1.0	2022/03/21	Primary

## Contents

Antenna introducing .....	P4
Features .....	P4
Antenna size.....	P4
Antenna electrical properties.....	P5
Antenna total gain and efficiency.....	P5

## Antenna introducing

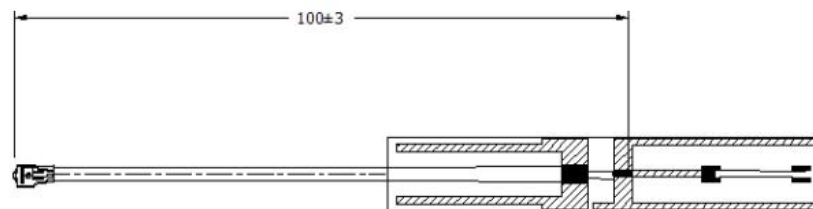
This antenna Made by PCB material, and work in 2.4~2.5GHz and 5.15~5.85GHz especially suit for WLAN system. Design by PIFA antenna theory, supply high gain ,high efficiency ,better port matching make wireless communication easily.

## Features

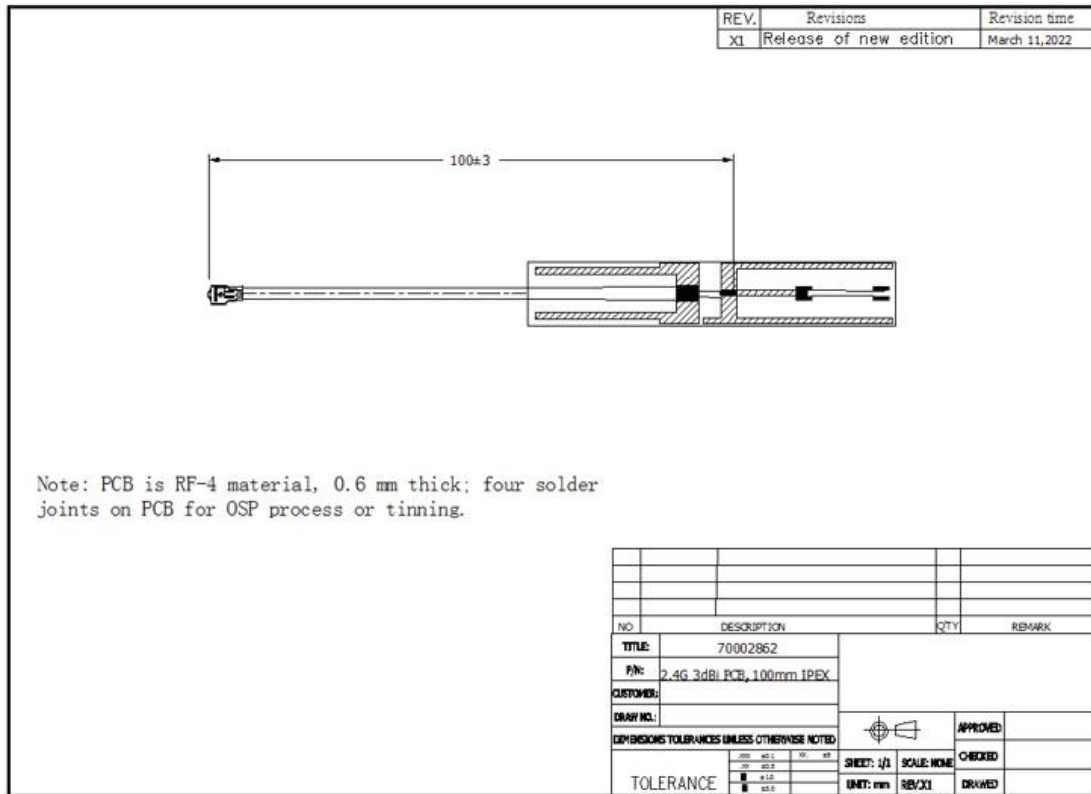
- IEEE802.11 b/g/n
- Peak gain 2.52dBi for 2.4G and 2.51dBi 5G
- High efficiency
- Good port matching

## Antenna size

47mm\*8mm\*0.17mm



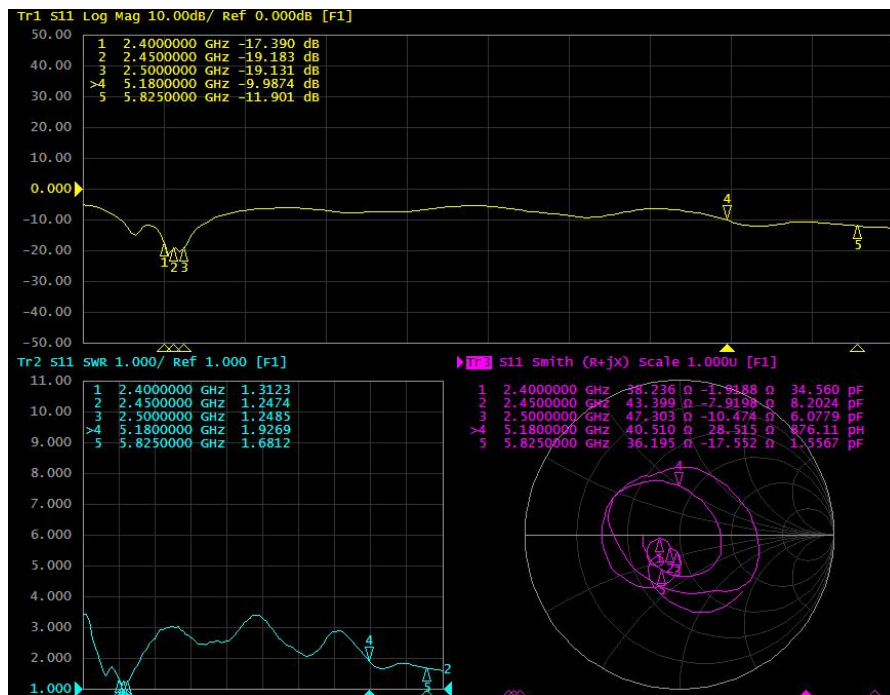
The cable is RF- $\Phi$ 1.13 cable with IPEX and length is 100mm



## Antenna electrical properties

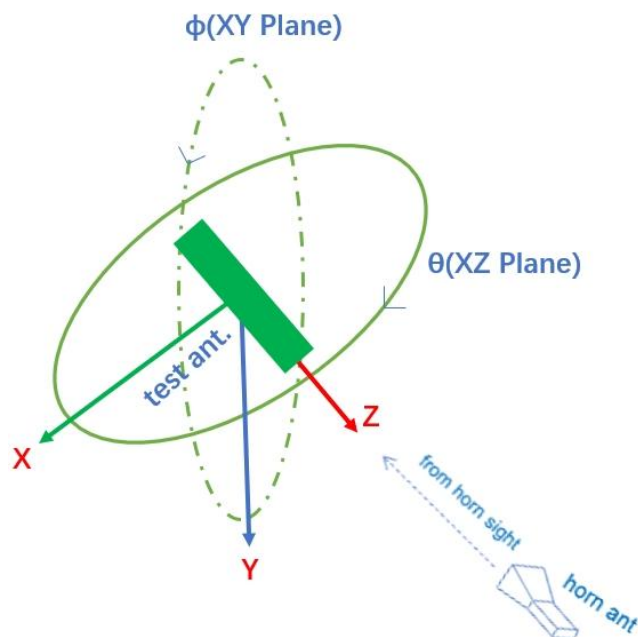
Frequency	2.4~2.5GHz &5.15~5.85GHz
Impedance	50ohm nominal
V.S.W.R	≤2
Return loss	≤-8dB
Radiation	Omni-directional
Gain(Peak)	2.4G:2.52dBi, 5G:2.51dBi
Polarization	Linear
Admitted Power	2W
Connector	IPEX
Efficiency	50%~70%
Cable	RF Φ1.13 cable and length is 100mm

## Antenna S-parameter



Return loss:  $\leq -8\text{dB}$   
 VSWR:  $\leq 2$

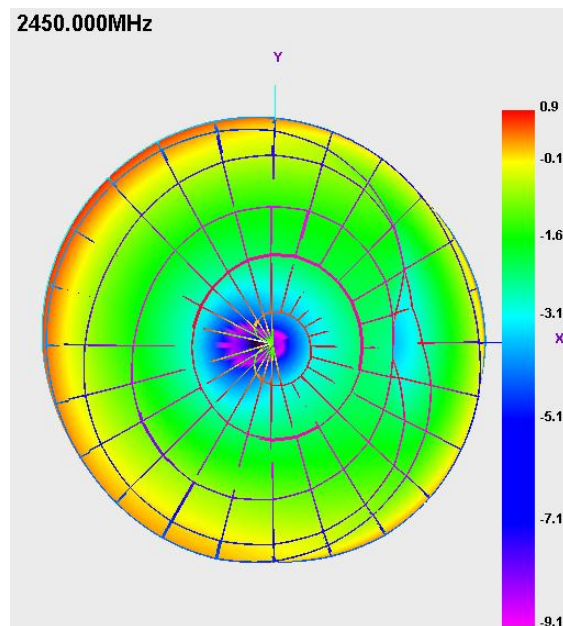
## Antenna Radiation parameter



## Antenna total gain and efficiency

	Freq. (MHz)	Gain (dBi)	Efficiency (%)
ANT	2400	2.45	65%
	2450	0.90	68%
	2500	2.52	67%
	5150	0.70	52%
	5470	2.00	55%
	5850	2.51	53%

## 2.4G Radiation Pattern



## 5G Radiation Pattern

