



# Antenna Part Specification

Project name:	380R PRO
Material category:	WIFI Antenna
Version:	V1.0
Date:	2024.05.16

Room 506, 8th Floor, Block a, Block 67, Donglian Building, No. 505~506, Chuangye 2nd Road, Baoan District, Shenzhen



# Contents

I: The report of passive data ..... 3  
II: 3D Active test report of antenna..... 6  
III: Environmental treatment ..... 7  
IV: Structure file..... 8

Change record			
Compile / change date	Reason for change	Changed content	Version
2024.05.16	First edition	First edition	V1.0

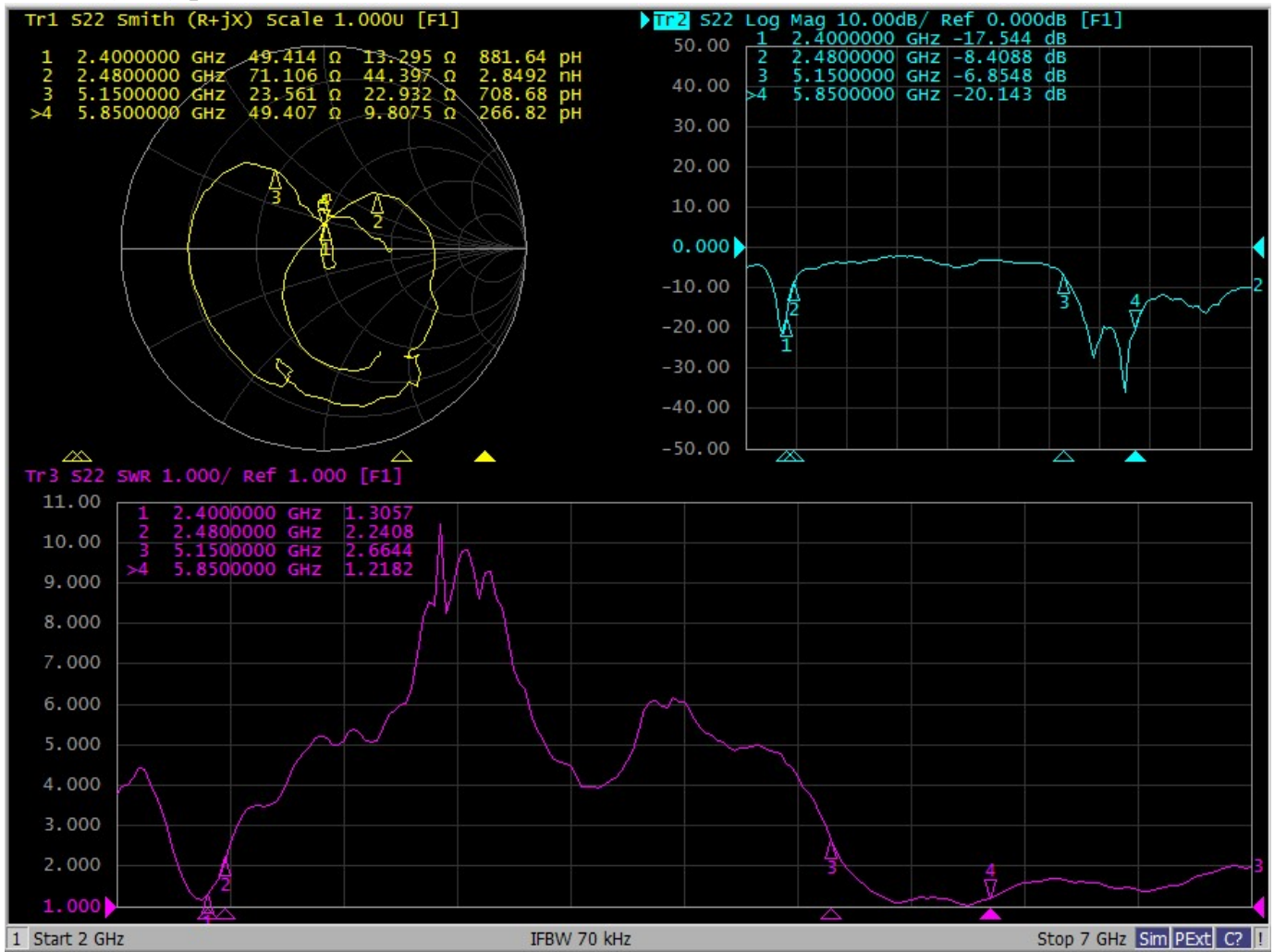


I: The report of passive data



Angilent E5071C

VSWR(S11) parameter:

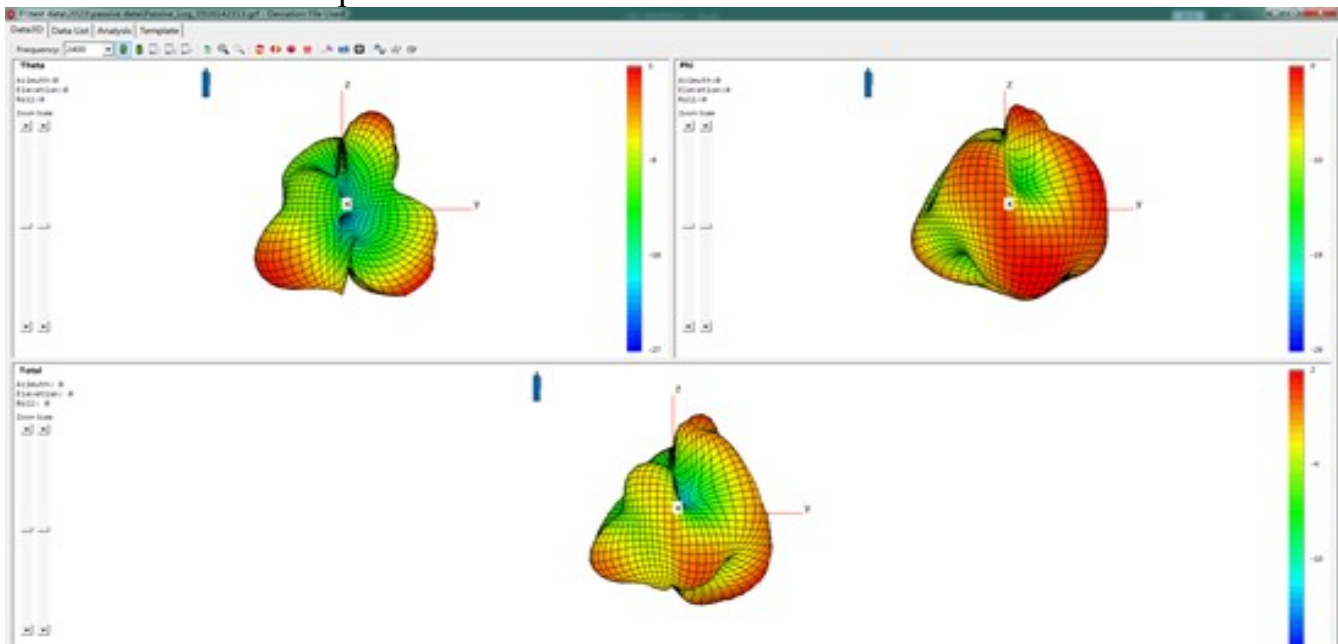




Efficiency:

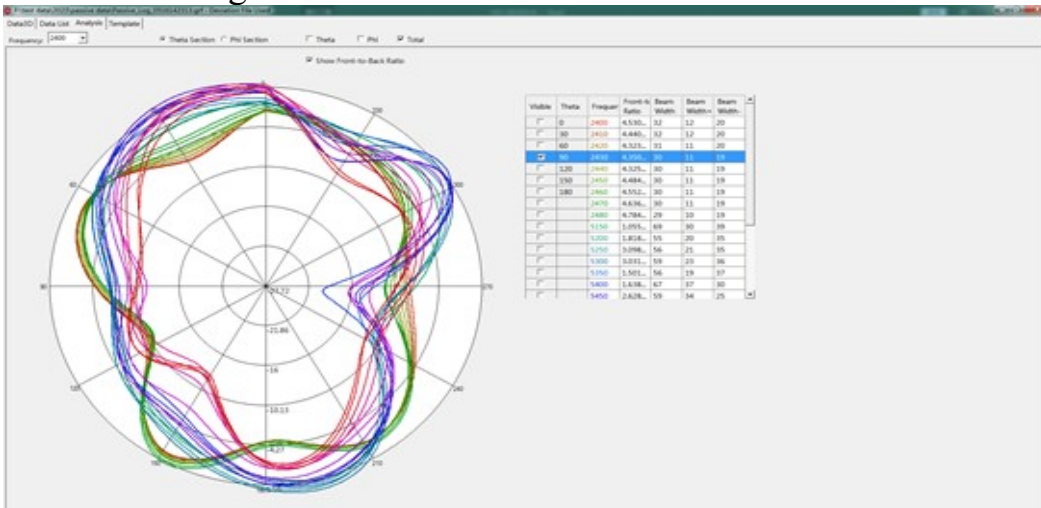
2400-2480 MHz			
Frequency (MHz)	Gain (dBi)	Efficiency (dB )	Efficiency
2400	1.7	-2.6	54.90%
2410	1.8	-2.6	54.40%
2420	1.8	-2.6	54.70%
2430	1.7	-2.7	53.10%
2440	1.6	-2.8	51.90%
2450	1.8	-2.8	53.10%
2460	1.7	-2.8	52.40%
2470	2.1	-2.5	56.50%
2480	2.3	-2.3	59.00%
Average value	1.8	-2.6	54.40%

3D Antenna radiation pattern:

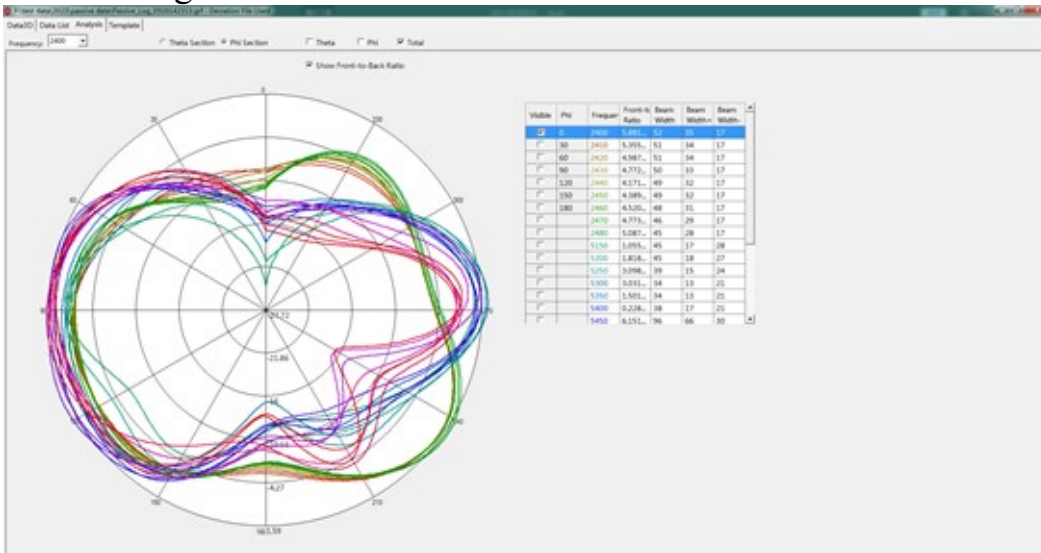




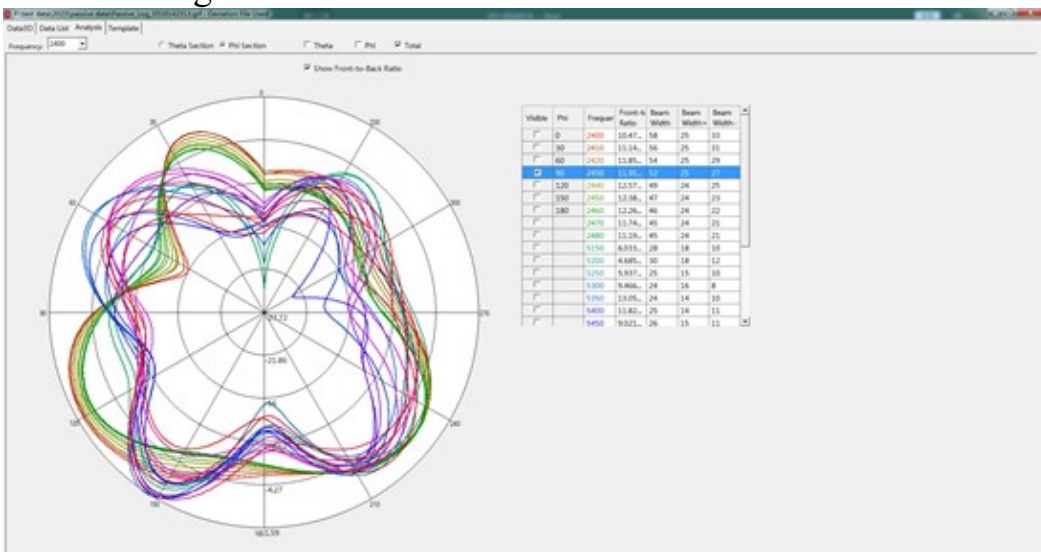
Antenna radiation pattern:  
Theta=90.00deg



Phi=0.00deg



Phi=90.00deg





II: 3D Active test report of antenna

Static data

11M	Channel	TRP (dBm)	TIS (dBm)
WIFI B	CH 1	15.6	-84.2
	CH 7	15.9	-84.8
	CH 13	15.8	-84.2

6M/54M	Channel	TRP (dBm)	TIS (dBm)
WIFI G	CH 1	15.6	-71.9
	CH 7	15.9	-72.3
	CH 13	15.9	-71.5

Dynamic data

11M	Channel	TRP (dBm)	TIS (dBm)
WIFI B	CH 1	15.8	-75.4
	CH 7	15.8	-76.0
	CH 13	15.7	-78.1

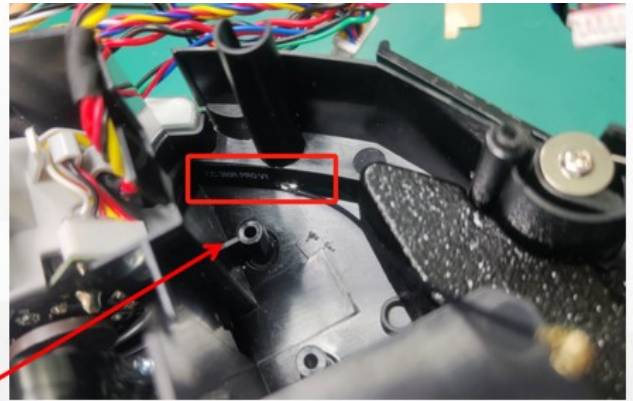
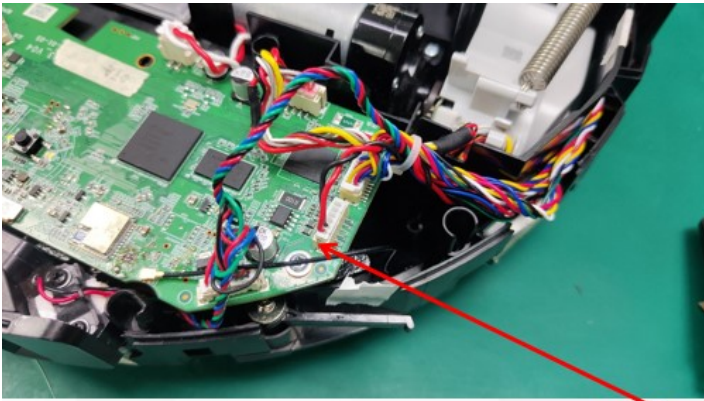
6M/54M	Channel	TRP (dBm)	TIS (dBm)
WIFI G	CH 1	15.7	-69.2
	CH 7	15.8	-70.0
	CH 13	15.7	-70.1



OTA Standard Chamber



III: Environmental treatment

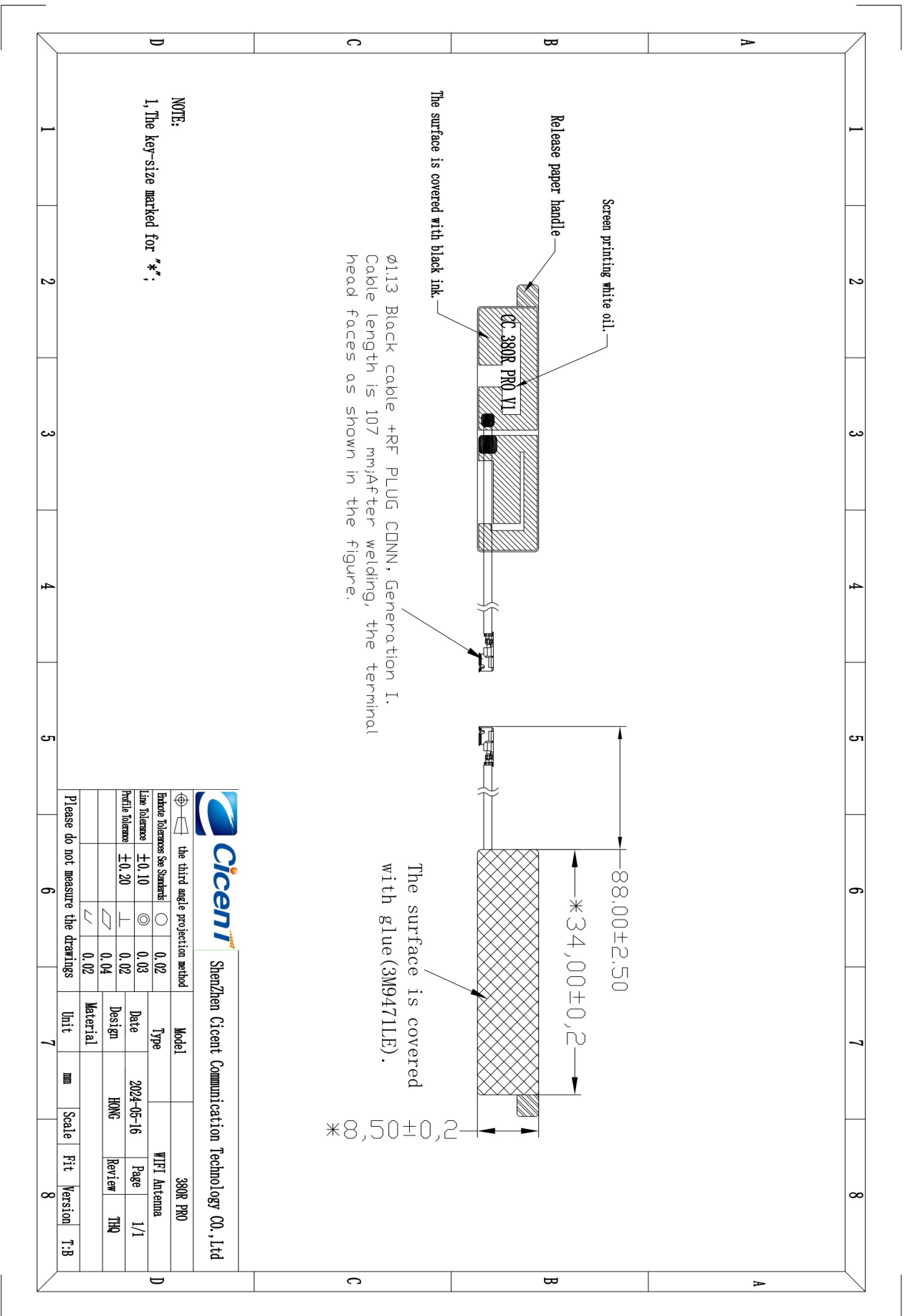


As shown in the figure:

- 1、 The antenna should be pasted at the bottom position below the motherboard, which must be pasted as shown in the picture! This location is a good place to avoid interference.
- 2、 The same applies to coaxial lines, as shown in the diagram above.
- 3、 The plug-in cable from the motor to the motherboard needs to be fixed with tape.



IV: Structure file



NOTE:  
1, The key-size marked for "∗":  
∅1.13 Black cable +RF PLUG CONN, Generation I.  
Cable length is 107 mm, After welding, the terminal head faces as shown in the figure.

				the third angle projection method	
Shenzhen Cicent Communication Technology CO., Ltd		Model		380R PRO	
Badmire Tolerances See Standards		Type		WIFI Antenna	
Line Tolerance ±0.10		Date		2024-05-16	
Profile Tolerance ±0.20		Design		HONG	
		Material		THQ	
Please do not measure the drawings		Unit		mm	
		Scale		Fit	
		Version		T.B	