



2.4GHz PIFA ANT

Specification

SHENZHEN BILIAN ELECTRONIC CO., LTD

Add: 10~11/F, Building 1A, Huaqiang idea park, Guangming district, Shenzhen. Guangdong, China

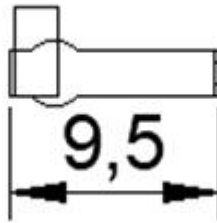
Web: www.b-link.net.cn

Revision History

Revision	Summary	Release Date
0.1	First edition release	2023-03-07

Product Name: 2.4GHz PIFA Ant	
Frequency: 2.4~2.5GHz	
Revision: V0.1	
Customer Approval:	
Company:	
Title:	
Signature:	Date:
BL-link Approval:	
Title:	
Signature:	Date:

1. Introduction



This antenna support 2.4~2.5GHz band frequency. Designed by PIFA antenna theory Almost Omni-directional radiation for far field.

Good port matching ,low return loss ,high efficiency can make communication more easily.

1.1 Features

- Operating Frequencies: 2400~2500MHz
- Radiation: Omni-directional radiation
- Modulation support: WLAN/ZIGBEE

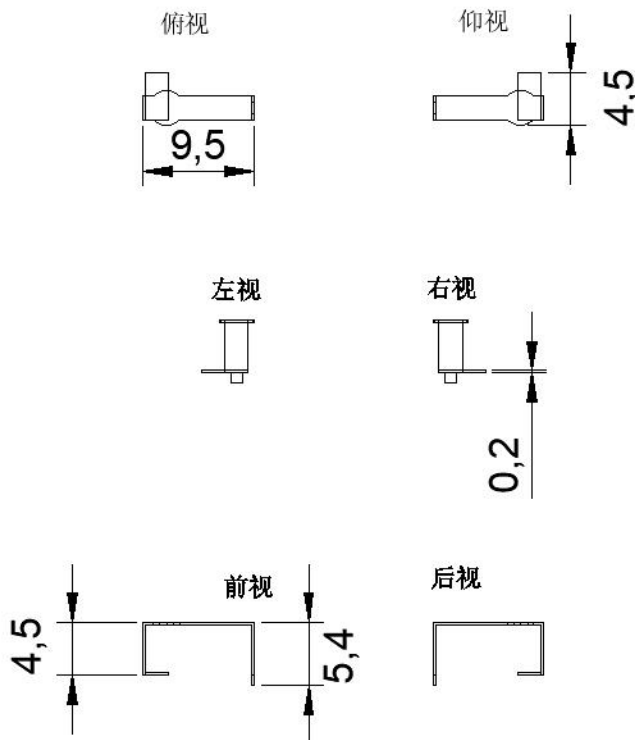
1.2 Applications

- IP Camera
- STB
- Smart TV
- Screen thrower
- Intelligent home furnishing
- Other devices which need to be supported by wireless network

1.3 General Specifications

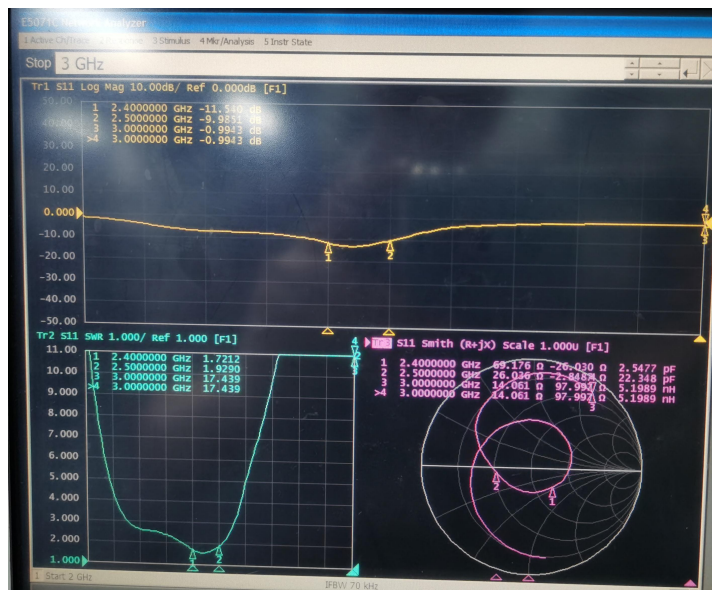
Product Name	2.4 PIFA antenna
Frequency	2400~2500MHz
Modulation support	WLAN/ZIGBEE
VSWR	≤ 2
Return loss	$\leq -9\text{dB}$
Radiation	Omni-directional
Gain (peak)	0.2dBi
Polarization	Linear
Admitted Power	2W
Connector	SMT on board
Efficiency	35%~50%
Cable	NI

2. Mechanical Specifications



SMT on board PIFA antenna, inside of wireless products. Antenna's material is Copper-Nickel-Zinc Alloy.

3. S-parameter



turn loss: $\leq -9\text{dB}$

VSWR: ≤ 2

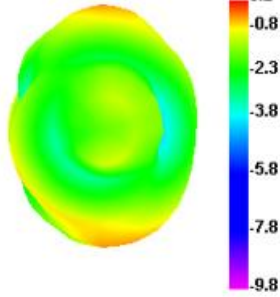
4. Radiation parameter

4.1 Gain and efficiency

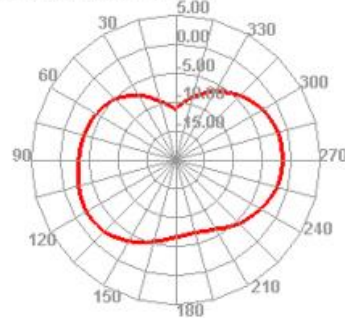
Frequency	Gain	efficiency
2.4	0.2dBi	35%~50%

4.2 Radiation Pattern

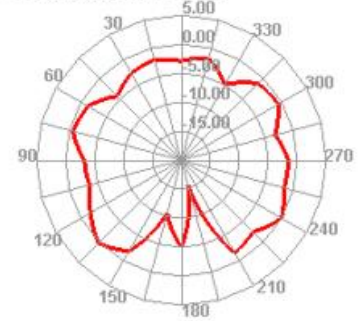
2400.000MHz



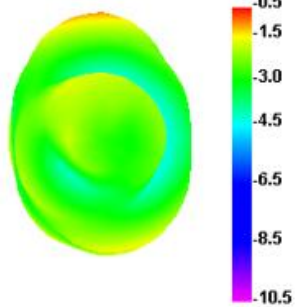
2400.000MHz H



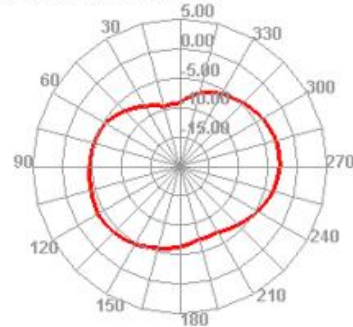
2400.000MHz E2



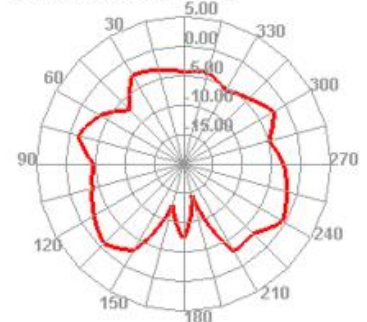
2450.000MHz



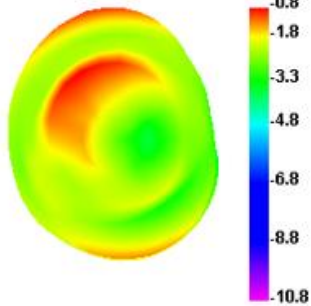
2450.000MHz H



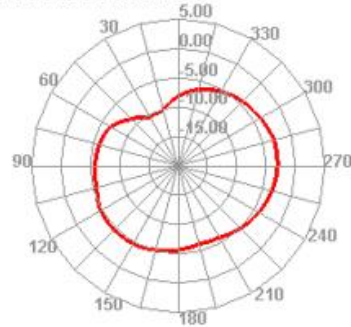
2450.000MHz E2



2500.000MHz



2500.000MHz H



2500.000MHz E2

