

Antena Test Report



顺达成科技

专业的4G/3G/GPS/WIFI等天线方案设计及供应商

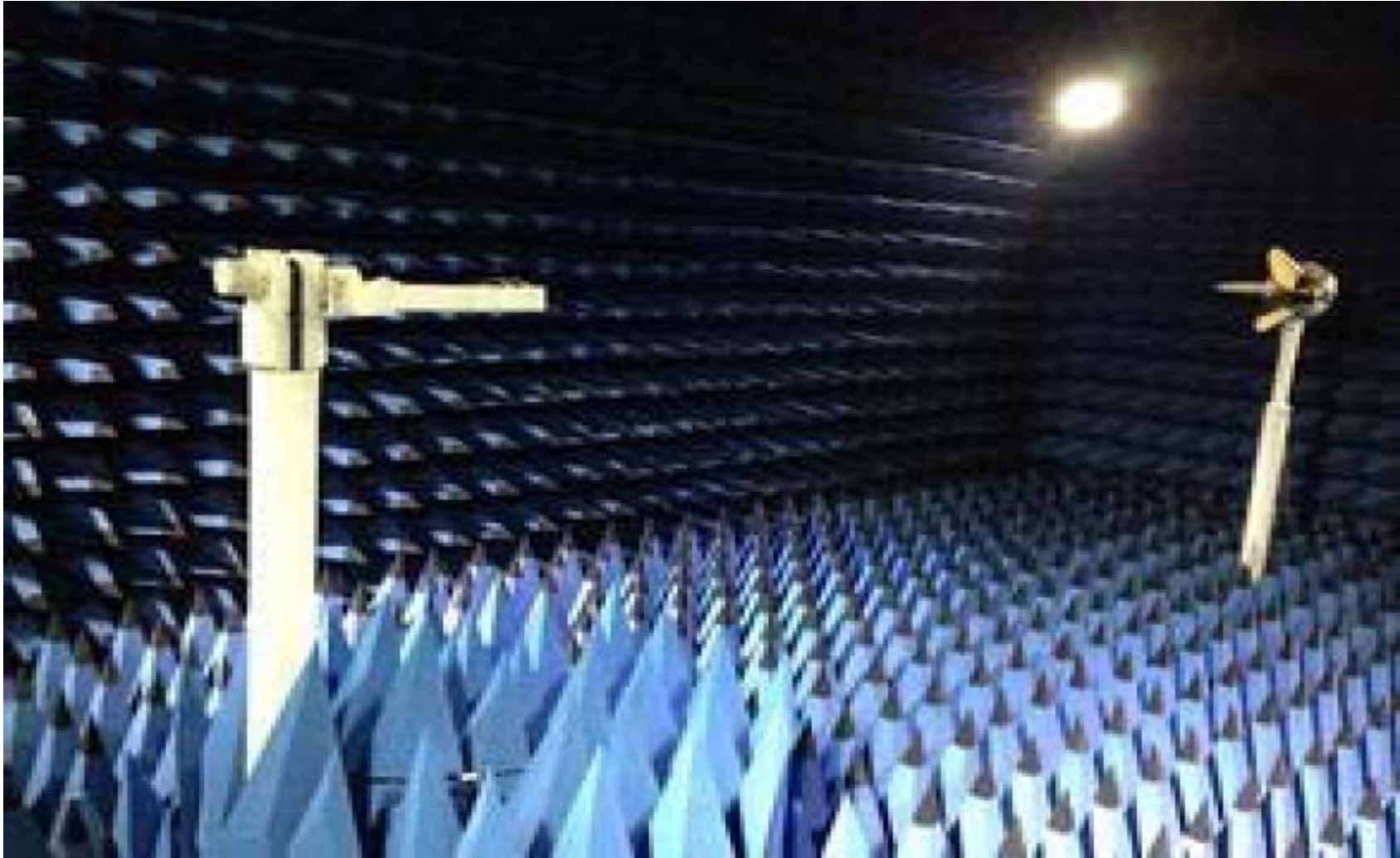


Manufacturer: Shenzhen Shun Reach Technology Co., LTD
4 / F, Building B5, Xinfu Industrial Park, Zhongqing Road, Heping Community,
Fuhai Street, Baoan District, Shenzhen, Guangdong Shunda Technology

Model: PSL-101



顺达成科技

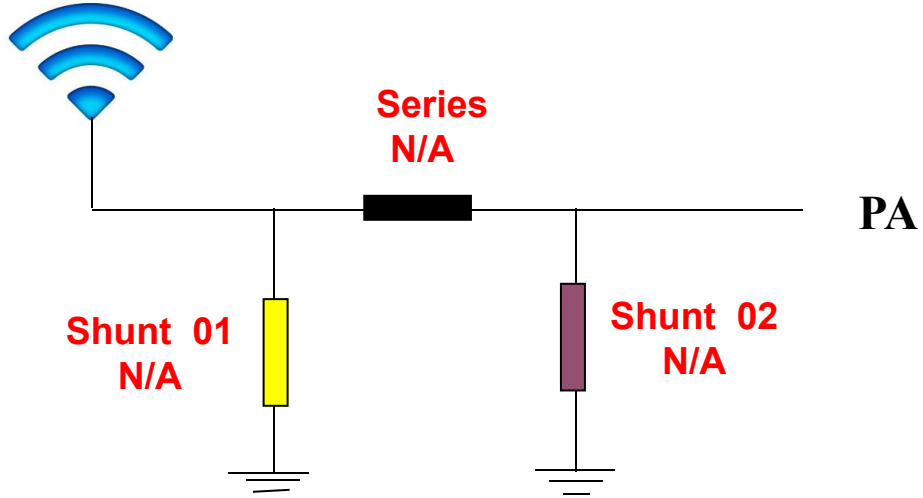




Contents

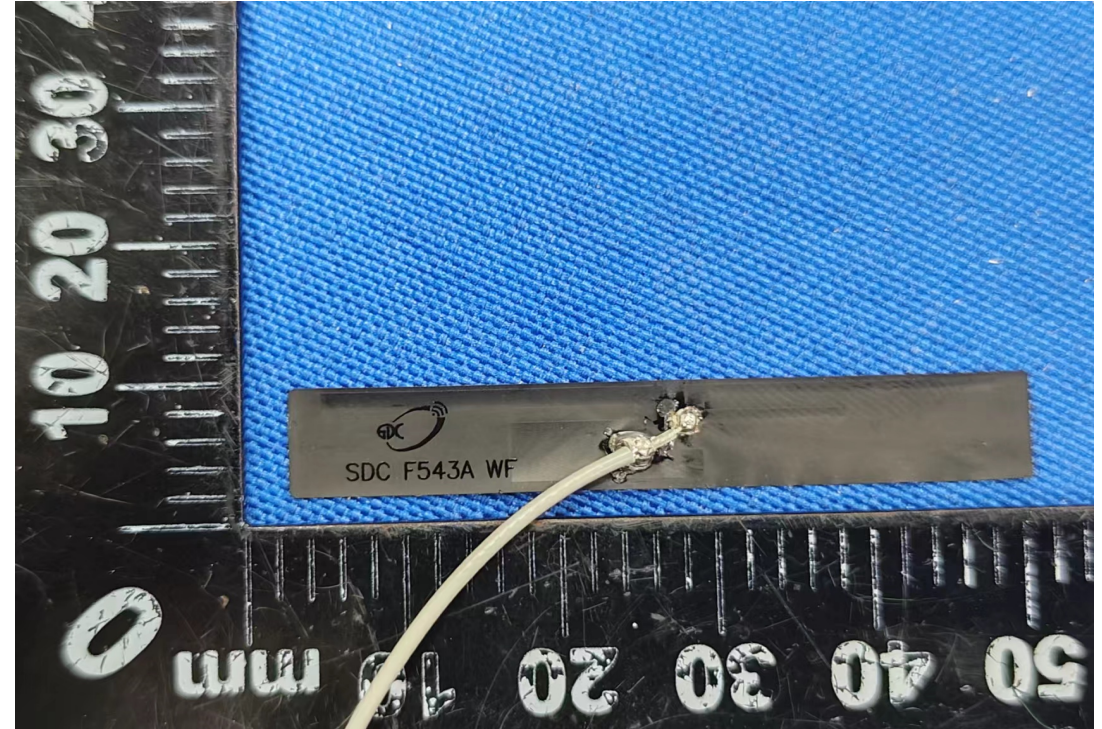
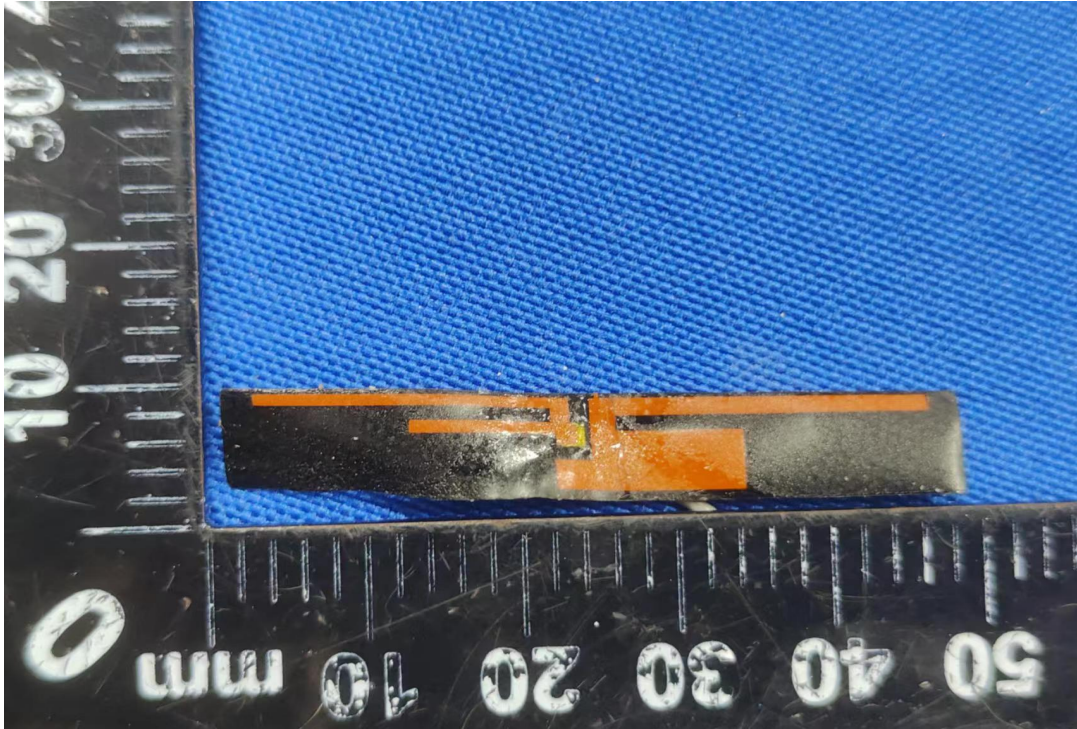
- 1: Antenna Overview & Dimension
- 2: The test project
 - 2.1 Antenna Matching Network
 - 2.2 VSWR
 - 2.3 Gain & Efficiency
 - 2.4 3D Date
 - 2.5 The Free Space 3D Date/The Free Space 2D Date
- 3 : Ground processing

Antenna



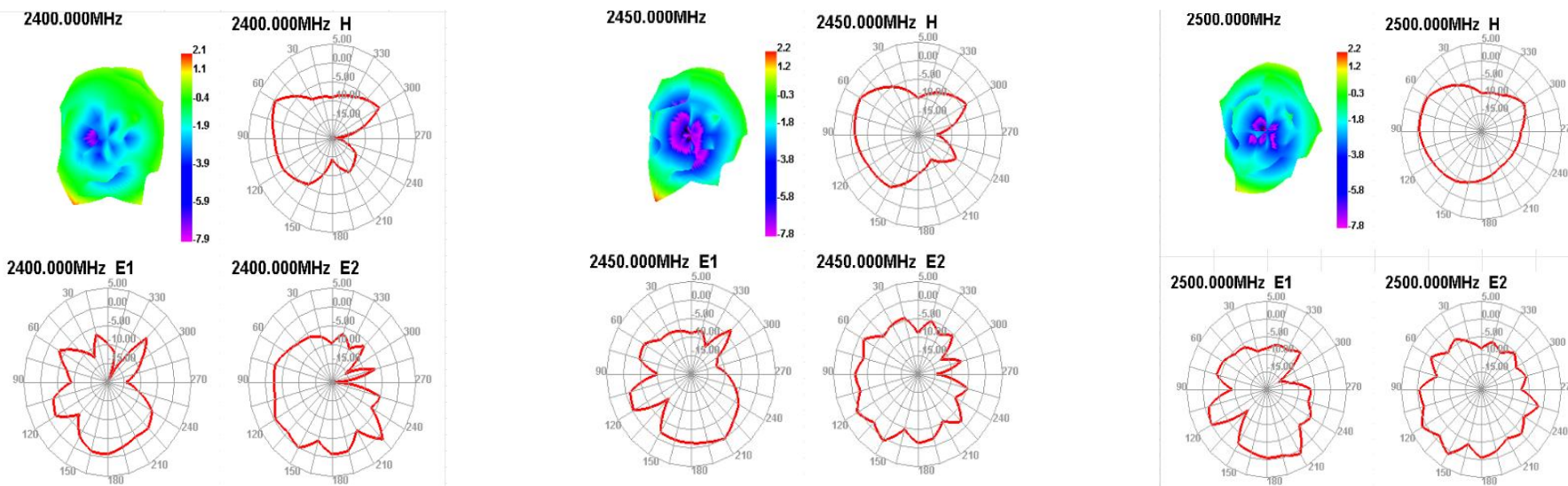
Location	Description
Shunt 01	N/A
Series	N/A
Shunt 02	N/A

Antenna size



Gain & Efficiency

WiFi Frequency (MHz)	Efficiency (%)	Peak GAIN (dBi)
2400	42.49	2.07
2450	44.68	2.23
2500	43.55	2.18



原天线 WIFI OTA Data



顺达成科技

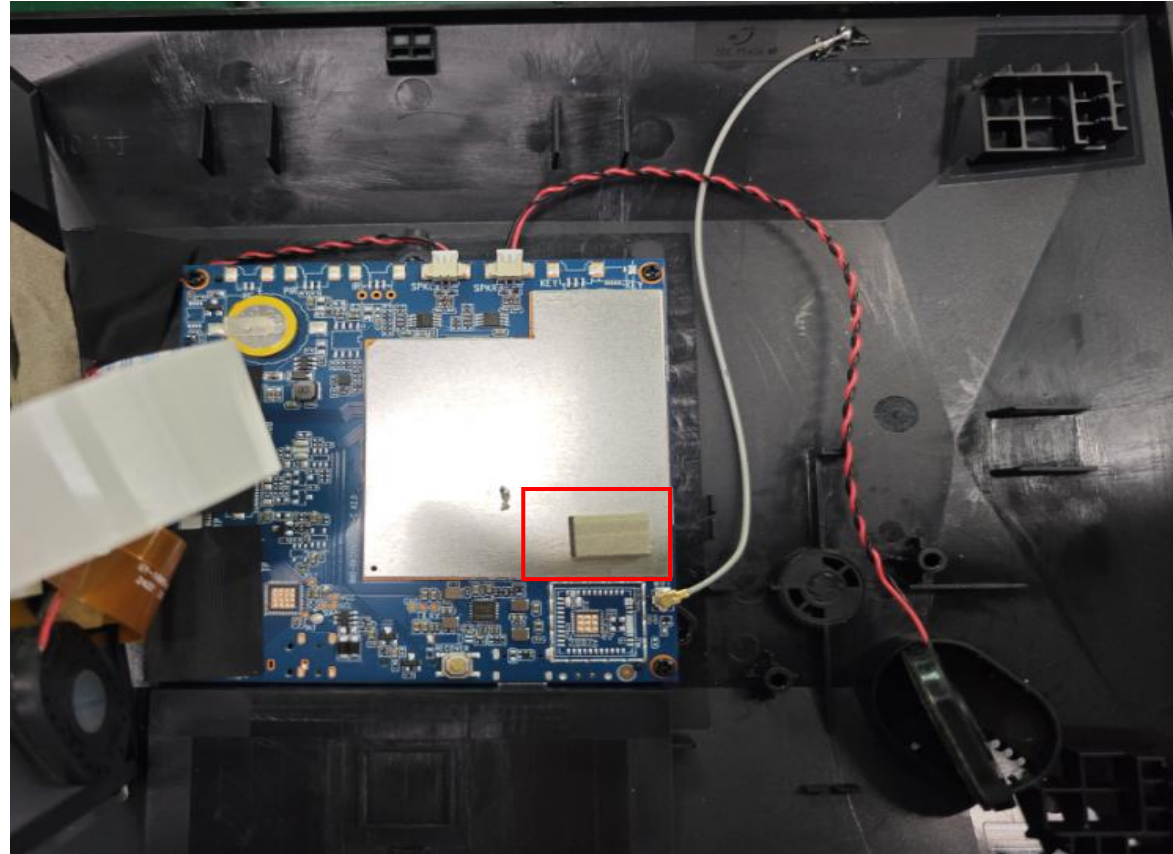
2.4G WIFI	TRP			TIS		
Channel	CH1	CH6	CH11	CH1	CH6	CH11
802.11 b , 11M	10.61	10.55	10.16	-76.37	-76.25	-77.98
802.11 g , 54M	9.15	9.88	9.41	-67.20	-67.63	-67.14
802.11 n , MCS7 (65M)	9.26	9.46	8.73	-65.64	-65.38	-65.37



WIFI OTA Data

2.4G WIFI	TRP			TIS		
Channel	CH1	CH6	CH11	CH1	CH6	CH11
802.11 b , 11M	13.12	13.68	13.39	-82.41	-82.56	-81.83
802.11 g , 54M	12.47	12.72	12.60	-71.34	-70.19	-70.59
802.11 n , MCS7 (65M)	12.33	12.27	12.15	-68.39	-68.22	-69.42

Environmental treatment

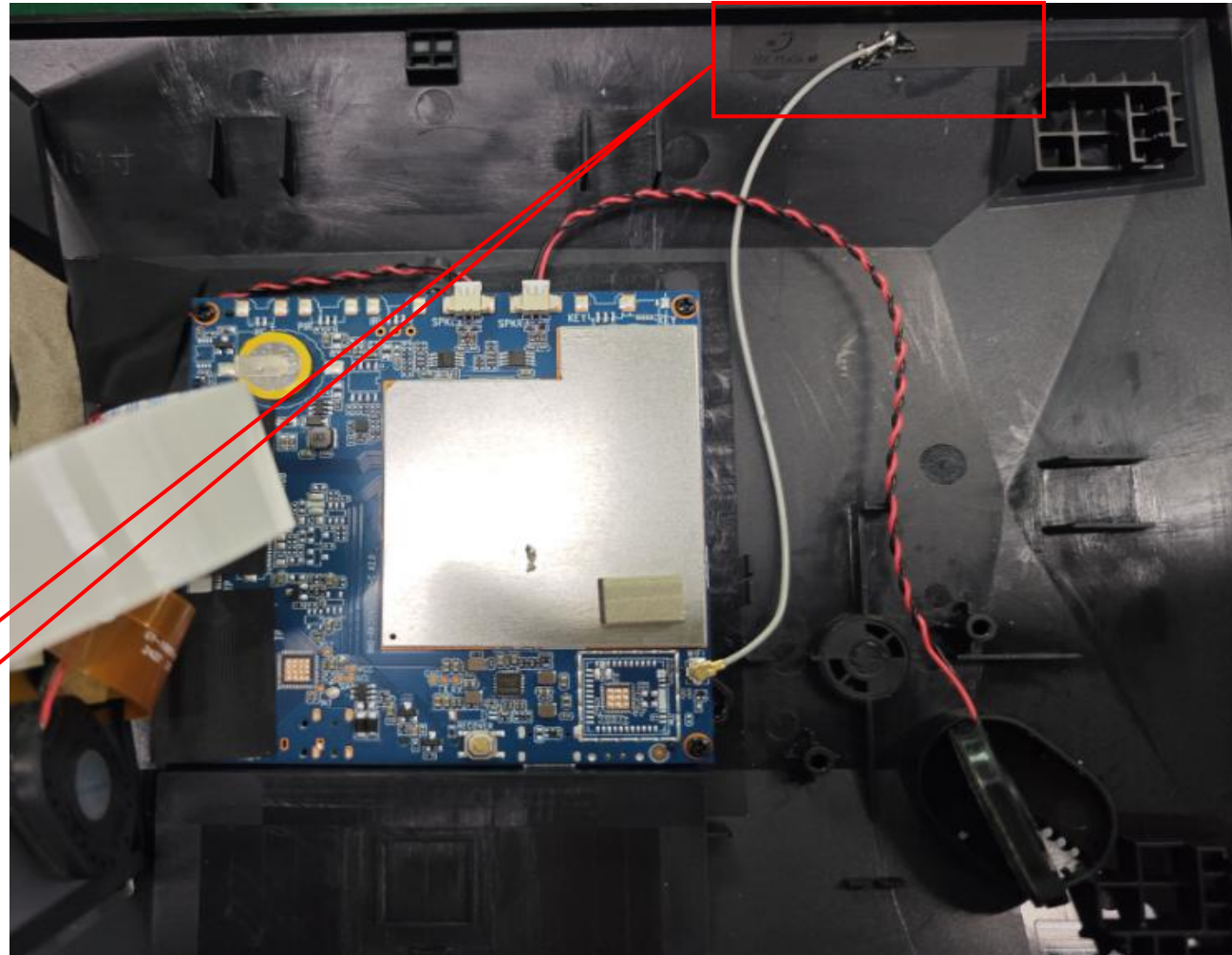


The mainboard shield is grounded with conductive foam and the screen

Antenna installation position diagram



顺达成科技



WiFiAntenna



Thanks