



PROCLINICAL® 250RC
ELECTRIC TOOTHBRUSH
电动牙刷

INSTRUCTION MANUAL
产品使用说明书

INSTRUCTION MANUAL
产品使用说明书

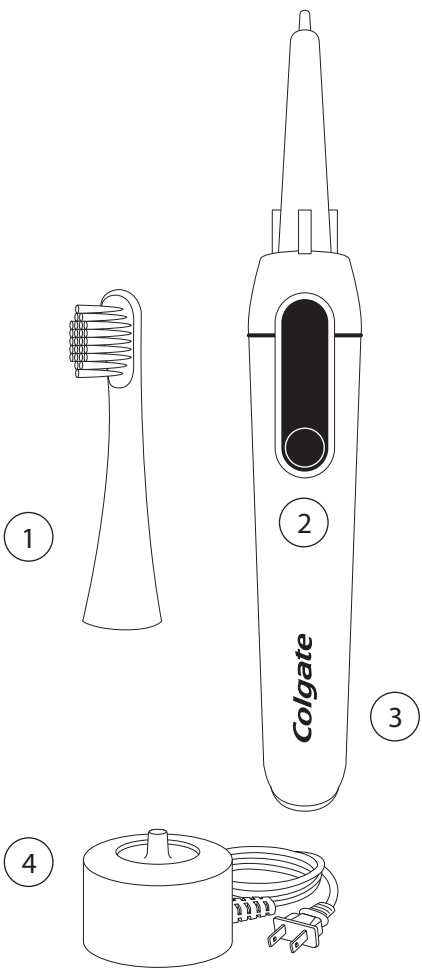
CONTENT.....	2-3
内含.....	2-3
ENGLISH	5-9
中文	10-15
EUROPE	16
AUSTRALIA	17
CONSUMER AFFAIRS....	18
消费者事务.....	18

COLGATE® PROCLINICAL® 250RC
ELECTRIC TOOTHBRUSH

- 1 - replaceable brush head
- 2 - on/off button
- 3 - brush handle
- 4 - charging base

高露洁PROCLINICAL® 250RC
电动牙刷

- 1 - 替换刷头
- 2 - 开/关按钮
- 3 - 刷柄
- 4 - 充电底座



IMPORTANT SAFEGUARDS

When using electrical products, especially when children are present, basic safety precautions should always be followed, including the following:

READ ALL INSTRUCTIONS BEFORE USING

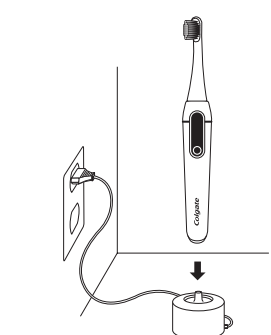
WARNING

- Toothbrushes can be used by children and persons with reduced physical, sensory or mental capabilities or lack of experience and knowledge if they have been given supervision or instruction concerning use of the appliance in a safe way and understand the hazards involved. Not suitable for children under 3. Keep out of reach of small children
- Cleaning and user maintenance shall not be made by children without supervision.
- Children shall not play with the appliance.
- The supply cannot be replaced. If the cord is damaged, the appliance must be scrapped.

- Stop using this toothbrush if it is damaged in any way (cord, plug, brush head, toothbrush handle, charger and/or AC adaptor).
- Use this product only for its intended use as described in this manual. Do not use brush heads, charger, or attachments not recommended by Colgate®.
- the charger with rated capacity, outlet or voltage as specified.
- No user servicable parts. Do not disassemble the handle except for battery disposal, as it may cause personal injury or device failure.
- If after using this toothbrush you experience excessive bleeding or if bleeding continues to occur after a week of use, please contact your dentist as it may be an indication of a more serious oral care issue.
- If you are undergoing treatment for any oral care condition, consult your dental professional prior to use.
- Do not place or store product where it can fall or be pulled into a tub or sink.
- Do not reach for a charger that has fallen into water. Unplug immediately.
- AC adaptors and chargers should always be completely dry when connecting to power.

SAVE THESE INSTRUCTIONS

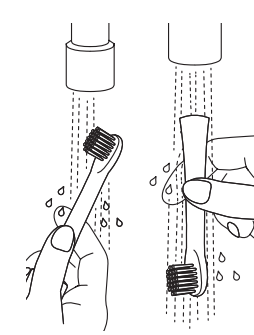
GET STARTED



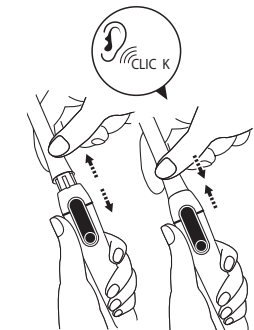
- 1 Charge your toothbrush (charge at least 10 hours the first time)
- charge light pulses green while charging
- charge light turns solid green when fully charged
- leave charger unplugged between charges
- when brush is on, charge light flashes red when battery is low and needs to be recharged



- 2 Turn your toothbrush ON and brush
- timer alerts every 30 seconds to brush different area of your mouth
- brush stops after 2 minutes



- 3 Clean brush and charger
- dry handle and charger completely before putting handle back in charger
- never put charger in water



- 4 Replace your brush head every three months

CHARGING BASE INPUT 100-240VAC, 50/60HZ BATTERY REMOVAL FOR RECYCLING

CLEANING INSTRUCTIONS

Clean your toothbrush head thoroughly after each use by removing the brush head from the handle and rinsing under running water. Regularly clean the handle and charging base of the Colgate® toothbrush using a damp cloth. This is especially important if your toothpaste contains baking soda or other bicarbonates or peroxide. Otherwise, plastic cracking could occur.

STORAGE INSTRUCTIONS AND DEVICE MAINTENANCE

The following maintenance instructions are important to ensure that your brush continues to work as it was designed. Failure to follow these instructions may cause your device to stop functioning altogether. Dentists and hygienists recommend replacing your toothbrush every 3 months.

If you plan to stop using the toothbrush for an extended period, we recommend that you unplug the charging base, clean the toothbrush handle and heads, and store them in a cool dark place. If you start using your toothbrush again after a long period of non-use, place it on the charger for at least 10 hours.

ELECTROMAGNETIC COMPATIBILITY

The Colgate® ProClinical® 250R electric toothbrush complies with all standards regarding electromagnetic fields. It is safe to use if handled properly according to the instructions provided in this manual.

NOTICE

For energy savings purposes, charge only when the battery level is too low. When not in use, keep the charger unplugged from the socket.

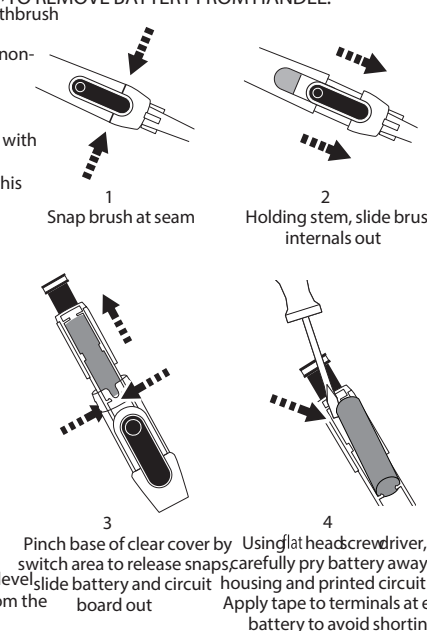
CORRECT DISPOSAL

Do not throw away this product with normal household waste at the end of its life. Always remove battery before discarding. Please use a return collection system to ensure responsible and environmentally safe recycling of the device and battery.

REMOVE BATTERY BEFORE DISPOSAL

Remove recyclable rechargeable battery in the compliance with environmental regulations before disposing of the toothbrush. Do not open handle unless permanently disposing (will void warranty).

TO REMOVE BATTERY FROM HANDLE:



Get started!



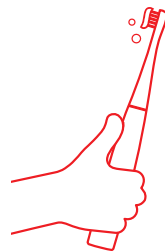
- 1 DOWNLOAD THE COLGATE CONNECT APP**
下载高露洁连接应用程序



- 2 LAUNCH THE APP AND CHECK
BLUETOOTH IS TURNED ON**
启动应用程序并检查蓝牙是否已打开



- 3 CREATE YOUR PROFILE**
创建个人资料



- 4 TURN ON YOUR TOOTHBRUSH!**
打开你的牙刷



FCC Statement:

Warning: Changes or modifications to this unit not expressly approved by the party responsible for compliance could void the user's authority to operate the equipment.

NOTE: This equipment has been tested and found to comply with the limits for a Class B digital device, pursuant to Part 15 of the FCC Rules. These limits are designed to provide reasonable protection against harmful interference in a residential installation. This equipment generates, uses and can radiate radio frequency energy and, if not installed and used in accordance with the instructions, may cause harmful interference to radio or television reception, which can be determined by turning the equipment off and on, the user is encouraged to try to correct the interference by one or more of the following measures:

- Reorient or relocate the receiving antenna.
- Increase the separation between the equipment and receiver.
- Connect the equipment into an outlet on a circuit different from that to which the receiver is connected.
- Consult the dealer or an experienced radio/TV technician for help

The device must not be co-located or operating in conjunction with any other antenna or transmitter.

This device complies with Part 15 of the FCC Rules. Operation is subject to the following two conditions : (1) this device may not cause harmful interference, and (2) this device must accept any interference received, including interference that may cause undesired operation.

Industry Canada Statement:

This device complies with Industry Canada license-exempt RSS standard(s). Operation is subject to the following two conditions: (1) this device may not cause interference, and (2) this device must accept any interference, including interference that may cause undesired operation of the device.

The device is compliance with RF field strength limits, users can obtain Canadian information on RF exposure and compliance.

Le présent appareil est conforme aux CNR d'Industrie Canada applicables aux appareils radio exempts de licence. L'exploitation est autorisée aux deux conditions suivantes : (1) l'appareil ne doit pas produire de brouillage, et (2) l'utilisateur de l'appareil doit accepter tout brouillage radioélectrique subi, même si le brouillage est susceptible d'en compromettre le fonctionnement.

Le présent appareil est conforme de ce matériel aux conformités ou aux limites d'intensité de champ RF, les utilisateurs peuvent sur l'exposition aux radiofréquences et la conformité d'acquérir les informations correspondante.

