

### Users Reading Attention

Please read the manual carefully before using the product, installing or using your product as an acknowledgment that you have read and agreed all the safety instructions written in the manual. For losses and accidents caused by improper use, our company will not assume responsibility for compensation in any legal liability. Our company reserves the right to interest and amend this manual.

### Warning

- Never plug or unplug the power adapter with a wet hand.
- Never use an external power source other than the one provided with this product.
- Stop using this product and unplug the power adapter when the product is abnormal.
- Place the product safely and keep it away from fire.
- Keep pets away from wiring and bare electrical wires. Otherwise, it may cause electric shocks.
- Keep the product away from other electrical devices when using it to prevent damage caused by accidental water splashing.
- Never attempt to disassemble or repair the product yourself. Otherwise, it may lead to your injury or the product's failure.

### Caution

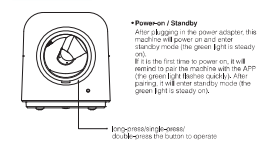
- Do not place this product in a high position. Falling from a height will damage the product or possibly injure people. To prevent the product from being knocked and causing injury, it is recommended to place the product in a corner or against a wall.
- Always keep the product placed horizontally. Do not overturn or tilt the product otherwise it may not work properly.
- Do not attempt to disassemble or repair any parts of your product. Do not allow others to repair the product without knowing the safety instructions and understanding the hazards involved. All servicing should be performed by qualified personnel only.
- Do not allow children to use the product without adult guidance and supervision.
- Always make sure the amount of cat litter does not exceed the Max. Liters.
- Do not let the drum rotate and do not let the drum rotate when recommended for the product.
- The inner wall of the drum is washable. After cleaning, the drum must be thoroughly dried before installation and use.
- Do not seat the base of the machine on water. Otherwise, it will affect the normal use of the product.
- Do not remove the waste collection bin, the drum or the cover while the product is operating.
- Always place the product on a solid and flat surface (do not put it on the carpet), avoid

-01-

soft uneven or unstable flooring, which may affect the normal operation of the product.

- Do not use this product in a strong magnetic field for a long time, or it may not work properly.

### Instructions for Use



**Power-on / Standby**  
After plugging the power adapter, the machine will power on and the power indicator mode (the green light) is steady on.

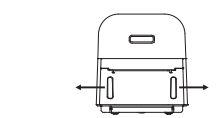
If it is the first time to power on, it will return to the machine with the APP (the green light flashing quickly) after pairing. If it enters standby mode, the green light is steady on.

- Indicator Light Status**  
Press the button once, the machine will normally execute cleaning mode and wait for pairing.
- Standby**  
Press the button once, and the machine will normally execute standby mode once, cleaning mode. It is to separate the sediment and lumps from the drum to the waste collection bin.
- Single-paste**  
Press the button once, and the machine will normally execute emptying mode once, cleaning mode. It is to separate the sediment and lumps from the drum to the waste collection bin.
- Double-paste**  
Press the button, and the machine will normally execute empty mode remove cat litter once.
- Emergency Mode (Remove cat litter)**  
It is to remove all cat litter from the drum to the waste collection bin.
- Human Light Control**  
To turn off the button light, please enter the APP - Settings - Indicator Light, and then turn it off.

-02-

### Instructions for Use

1. Take out the waste collection bin.  
Move left or right to take the waste collection bin out.



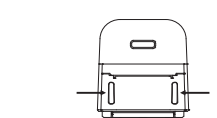
2. Place a garbage bag and a piece of color indicator fragrance gel.

- 1. Lift the cover of the waste collection bin.
- 2. Remove and replace the garbage bag.
- 3. Put the cover back on the waste collection bin.
- 4. Insert the fragrance gel and insert it into the groove of the waste collection bin.

-03-

### Instructions for Use

3. Put the power adapter into the power inlet of the base, and the machine will automatically power on and enter standby mode.  
Note: The machine will enter pairing mode when the power is on for the first time. The light is flashing green, which means the machine is waiting for pairing.



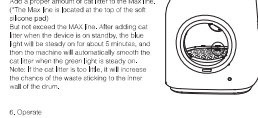
4. Plug in the power adapter.

- 1. Plug in the power adapter into the power inlet of the base, and the machine will automatically power on and enter standby mode.
- Note: The machine will enter pairing mode when the power is on for the first time. The light is flashing green, which means the machine is waiting for pairing.

-04-

### Instructions for Use

5. Add cat litter.  
Add a proper amount of cat litter to the Max. Liters. (The Max. Liters is located at the top of the soft silicone pad.)  
But do not exceed the Max. Liters. After adding cat litter when the device is in standby, the Max. Liters will be steady on for about 5 minutes, and then the machine will automatically smooth the cat litter when the green light is steady on.  
Note: If the cat litter is too thick, it will increase the chance of the waste clogging in the inner wall of the drum.

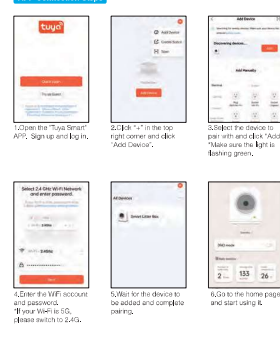


6. Operate.  
The machine can be used stand-alone or connected to the APP for use.

- Stand-alone Mode:** The machine will automatically enter standby mode after being powered on and staying out for 10 minutes.
- Emergency Mode:** Can be used automatically. (Cat litter auto mode cannot be used.)
- Human Light Control:** The machine can be paired according to the following instruction. After pairing, the machine can be operated with full functions through the APP.
- APP Control:**
  - 1. Download "Toys Smart" in the app store. Sign up and log in after installation.
  - 2. Open the app to add the machine. Turn on your phone's location mode and connect it with WiFi (2.4GHz network). Please make sure that the machine has entered pairing mode (the green light flashes quickly), and then follow the steps on the App to add the machine.
  - 3. Due to the update and version of the application, the actual operation may be slightly different from the instructions. Please follow the latest instructions in the App.
- Pairing Mode:** Long-press the button for more than 10 seconds until the green light flashes, which means the machine has entered pairing mode and is ready to be connected.

-05-

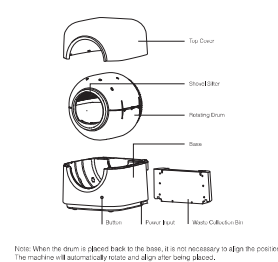
### APP Connection Steps



-06-

### Cleaning Instructions

The steps are as follows:  
1. Do not depress the button or click the "Remove cat litter" button on the APP to empty the cat litter from the waste collection bin before pairing.  
2. Power off the machine and unplug it.  
3. Remove the top cover.  
4. Remove the drum.  
5. Wash the inner wall of the drum with water.  
6. Dry the drum thoroughly.  
7. Load the drum back to the base and install the top cover.



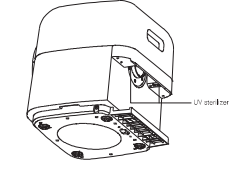
Note: When the drum is placed back to the base, it is not necessary to align the position. The machine will automatically rotate and align after starting above.

-07-

### Sterilizing Instructions

Sterilization mode can only be set through the APP. There are two modes, manual sterilization and smart sterilization.  
Manual Sterilization: Click the "Sterilize" button in the APP and the UV sterilizer will start to sterilize the waste collection bin for 10 minutes, and the UV sterilizer will automatically turn off after the sterilization is completed.

Smart Sterilization: In the APP - Settings - Turn on the smart sterilization. After smart sterilization mode is turned on, it will start to sterilize the waste collection bin every 4 hours, each time for 10 minutes, and the UV sterilizer will automatically turn off after the sterilization is completed.



Note: The UV sterilizer is above the waste collection bin. Please do not put the top cover or take out the waste collection bin during sterilization, otherwise the sterilizing process will be interrupted.

-08-

### Indicator Light Status and Troubleshooting

Indicator Light Status	Condition
Green Light Steady On	The machine is in standby, cleaning or removing cat litter.
Green Light Flashing Quickly	The machine has entered pairing mode.
Red Light Steady On	1. Some parts of the machine are not installed well. 2. The current process is interrupted. 3. The waste collection bin is full.
Red Light Flashing Quickly	The motor is blocked.
Blue Light Steady On	The machine detects the cat litter entered or the cat litter is being added.
Purple Light Steady On	Sterilization is in progress, each time for 10 minutes.
Timeout	Stallion
Red Light Steady On	1. Check if the top cover or the collection bin is installed properly. 2. Check if the cat litter is properly added to the machine while it is working. 3. After confirming there is no foreign object stuck, please install the machine properly and restart.
Red Light Flashing Quickly	1. Please power off the machine and lift the drum to check if the gear is stuck for foreign objects. 2. After confirming there is no foreign object stuck, please install the machine properly and restart.
Pairing Failure	1. Check if the WiFi password is correct. 2. Check if the phone is connected to WiFi, which is 2.4 GHz. If not WiFi is 5 GHz, please change to 2.4 GHz and try again.
Disconnection status to the APP (Blue light or drum out)	Check if the cat litter is installed properly.

-09-

### Product List

Product List	User Manual
Smart Cat Litter Box V1	User Manual V1
Power Adapter V1	Call-Letter V1 (1490 mm/50mm)
Emergency Mode V1	Call-Letter V1 (1490 mm/50mm)
UV Light Indicator (Integrated with APP)	Call-Letter V1 (1490 mm/50mm)

### Product Specifications

Product Name	Product Smart Cat Litter Box
Product Size	149mm/54mm/50mm/50mm
Capacity	2L
Product Weight (Net)	1.0kg
Power Input	DC 5V/2A

### FAQ

- Q1: Why does the cat litter enter when the drum rotates?**  
A: If a cat enters the machine when it rotates, the greatly excess will be triggered immediately. The drum will stop rotating immediately, and the machine will continue to operate after the cat leaves for a period of time. Therefore, there is no need to worry about the danger of the cat entering the rotating drum.
- Q2: How to help the cat quickly adapt to the new smart cat litter box?**  
A: You can put some cat litter with the smell of the cat into the machine. The familiar smell will make the cat easier to adapt.
- Q3: Can multiple users be connected to the same smart cat litter box?**  
A: You can share the status of the smart cat litter box with other users through the sharing function of the app. You and your family can check the safe use of the cat litter box through the app, such as the number of times it operates.
- Q4: Why does the machine start to make noise as soon as it is turned on?**  
A: The machine will perform a self-test when it is started. It will automatically stop. When the drum returns to its starting position, the machine is ready to use.
- Q5: Is the cat litter box running loudly?**  
A: The waste collection box of this product is on the back of the product, and there is no other opening in the drum. The product is equipped with gravity sensors that release energy and softens the mechanical structure and wear and tear protection. The triple control mechanism makes our product realize real safety protection, so the cats will not have the risk of being trapped during use.
- Q6: What kind of cat litter should I use?**  
A: The waste collection box of this product is on the back of the product, and there is no other opening in the drum. The product is equipped with gravity sensors that release energy and softens the mechanical structure and wear and tear protection. The triple control mechanism makes our product realize real safety protection, so the cats will not have the risk of being trapped during use.
- Q7: How much cat litter should I use?**  
A: The maximum capacity of the product is 2L. Do not add too much because the Max. Liters or too High. During operation, too High sand may cause the poop to stick to the wall of the drum. Please add and replace cat litter regularly.
- Q8: What is the capacity of the collection bin? How many days of poop can it hold?**  
A: The capacity of the waste collection bin is about 2L. The number of days that can be used needs to be determined according to the specific use situation (factor such as the number of cats). The capacity can sustain a cat for 15 days of usage.
- Q9: Is there a special design to reduce the problem of cat litter or waste leakage?**

-10-

A: Our machine has a barrier, which can effectively prevent the leakage of cat litter or excrement when entering and leaving the container. And it is equipped with a 450mm/200mm double-layer cat litter filter, which can be used to directly collect cat litter that falls into the entrance and keep it away.

**Q1: Is a multiple family can use the device the weight of multiple cats, and the recorded health care for one cat or multiple cats?**  
A: Yes, the cat litter weight is used every time they go to the machine, but we can't distinguish directly between cat A and cat B. Users can judge according to the weight of the cats. If the weight of cats is similar, it may not be possible to distinguish between cat A and cat B.

**Q2: Can multiple users be connected to the same smart cat litter box?**  
A: You can share the status of the smart cat litter box with other users through the sharing function of the app. You and your family can check the safe use of the cat litter box through the app, such as the number of times it operates.

**Q3: Why does the machine start to make noise as soon as it is turned on?**  
A: The machine will perform a self-test when it is started. It will automatically stop. When the drum returns to its starting position, the machine is ready to use.

**Q4: Is the cat litter box running loudly?**  
A: The waste collection box of this product is on the back of the product, and there is no other opening in the drum. The product is equipped with gravity sensors that release energy and softens the mechanical structure and wear and tear protection. The triple control mechanism makes our product realize real safety protection, so the cats will not have the risk of being trapped during use.

-11-

### Caution

**Part 15B**  
This equipment has been tested and found to comply with the limits for a Class B digital device, pursuant to Part 15B of the FCC Rules. These limits are designed to provide reasonable protection against harmful interference in a residential installation. This equipment generates, uses and can radiate radio frequency energy and, if not installed and used in accordance with the instructions, may cause harmful interference to radio or television reception. However, there is no guarantee that interference will not occur in a particular installation. If this equipment does cause harmful interference to radio or television reception, which can be determined by turning the equipment off and on, the user is encouraged to try to correct the interference by one or more of the following measures - Reorient or relocate the receiving antenna. - Increase the separation between the equipment and receiver. - Connect the equipment into an outlet on a circuit different from that to which the receiver is connected. - Consult the dealer or an experienced radio/TV technician for help. CAUTION: Any changes or modifications not expressly approved by the grantee of this device could void the user's authority to operate the equipment.

**Part 15C**  
This device complies with Part 15C of the FCC Rules. Operation is subject to the following two conditions: (1) This device may not cause harmful interference, and (2) this device must accept any interference received, including interference that may cause undesired operation.

-12-

**RF exposure warning:** (Distance from human body more than 20cm, no SAR requirements)  
**RF exposure warning:** This equipment must be installed and operated in accordance with provided instructions and the antenna(s) used for the transmitter must be installed to provide a separation distance of at least 20 cm from all persons and must not be co-located or operating in conjunction with any other antennas or transmitter. End users and installers must be provided with antenna installation instructions and transmitter operating conditions for satisfying RF exposure compliance.

**English Warning Statement:**  
This device complies with Industry Canada license-exempt RSS (standards). Operation is subject to the following two conditions: (1) this device may not cause interference, and (2) this device must accept any interference, including interference that may cause undesired operation of the device.

**French Warning Statement:**  
Ce présent appareil est conforme aux CNR d'Industry Canada applicables aux appareils radio exempts de licence. L'exploitation est autorisée aux deux conditions suivantes: (1) l'appareil ne doit pas produire de brouillage; et (2) l'appareil doit accepter tout brouillage radioélectrique subi, même si le brouillage est susceptible d'en compromettre le fonctionnement.

-13-

### Powduet Smart Cat Litter Box

Please read this manual carefully before use and keep it for future reference.



### User Manual (FRONT COVER)