

anko

# Pet Activity Tracker



# Contents



DEVICE



BAND



COIN CELL  
(INCLUDED)



SCREWDRIVER  
(INCLUDED)

## Battery Installation

Step 1: Use screwdriver to unscrew the two screws on the back.

Step 2: Take out the battery and remove the battery insulator.

1



2



Ensure that the CR2032 battery is placed in the tracker with the correct polarity ('+' facing down). Press the cover firmly until you hear a "click" sound. The LED will light up. Use screwdriver to tighten the battery cover securely.



## Device Setup

Attached the device to your pet's collar with the provided band by:

- Hook one side of the band on to the tracker



- Pull band firmly across to the other side ensuring you place pet's collar in between band and activity tracker



- Hook the band onto the loop



# Instructions

## 01 DOWNLOAD THE APP

Download the APP “petEsong” form the APP STORE or Google Play.



Scan the QR Code to download the APP automatically

## 02 REGISTER LOGIN ACCOUNT

Step\_1: Click button “Register”

Step\_2: Enter your information, then click the “Get PIN” button

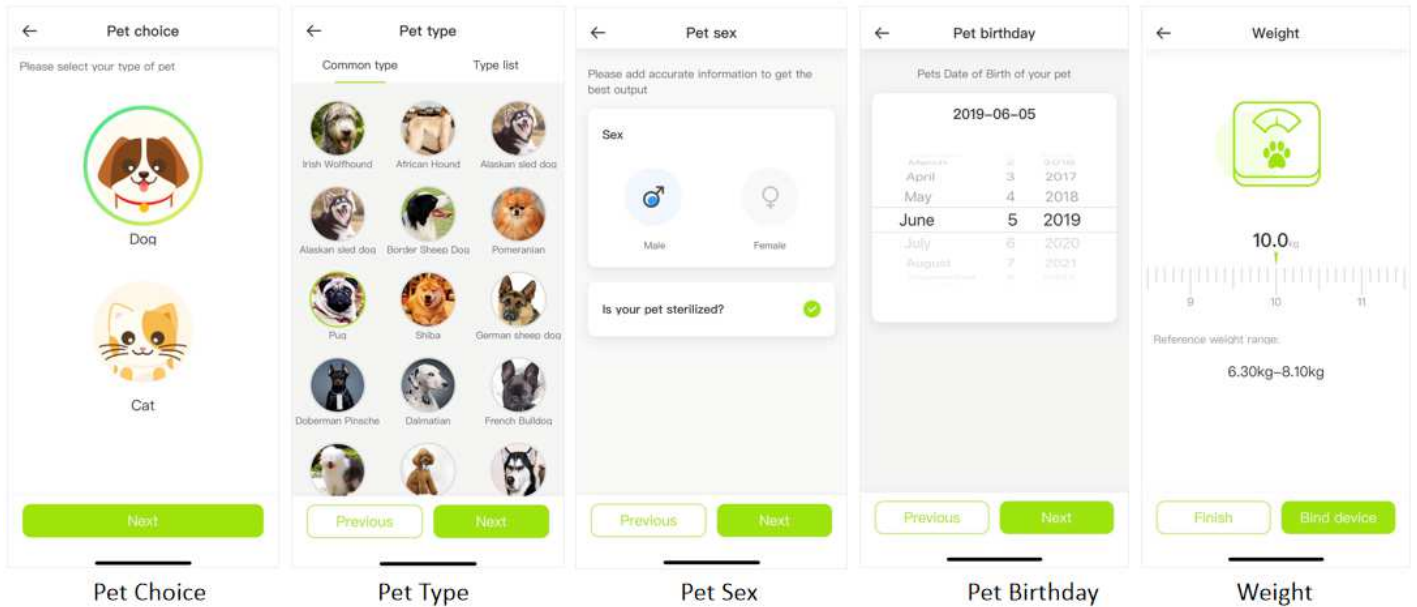
Step\_3: A Pin code will send to your email account. Enter the PIN code to complete the registration.

The login screen features a green logo at the top, followed by "PW login" and "PIN login" options. Below are input fields for "E-Mail" and "Password", a "Login" button, and links for "Register now" and "Forget password?".

The sign in screen includes a country selector (set to "Australia"), input fields for "E-Mail" and "Password", and a "Get PIN" button. A "Register and login" button is also present at the bottom.

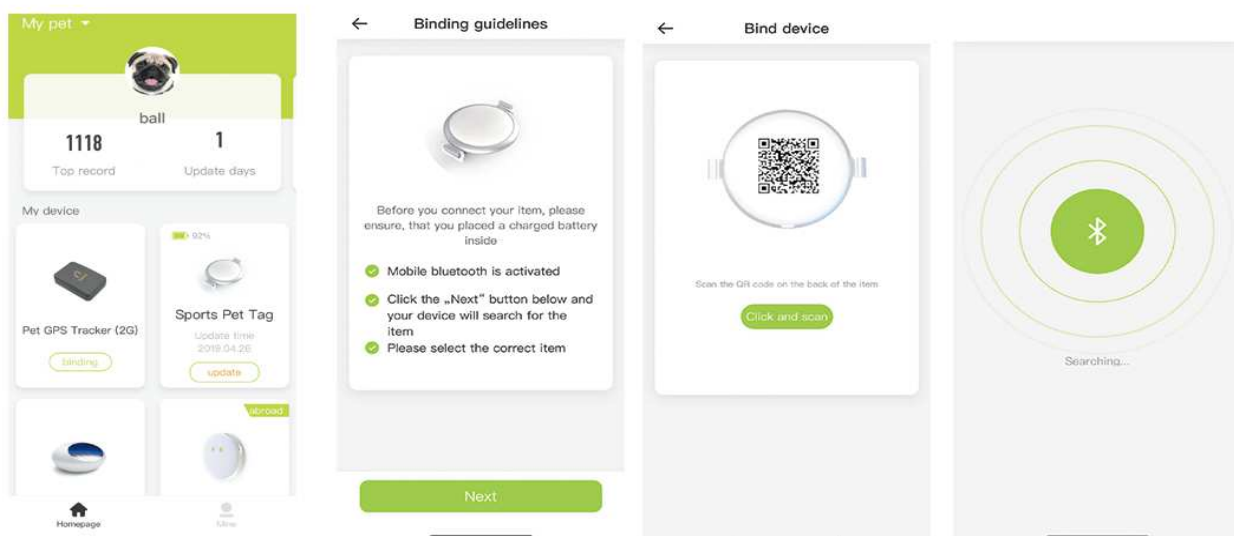
## 03 ADDING YOUR PET

Add your pet's details



## 04 CONNECTING THE ACTIVITY TRACKER TO YOUR DEVICE BY BLUETOOTH FOR BINDING

Linking the activity tracker to your device by bluetooth



Select device

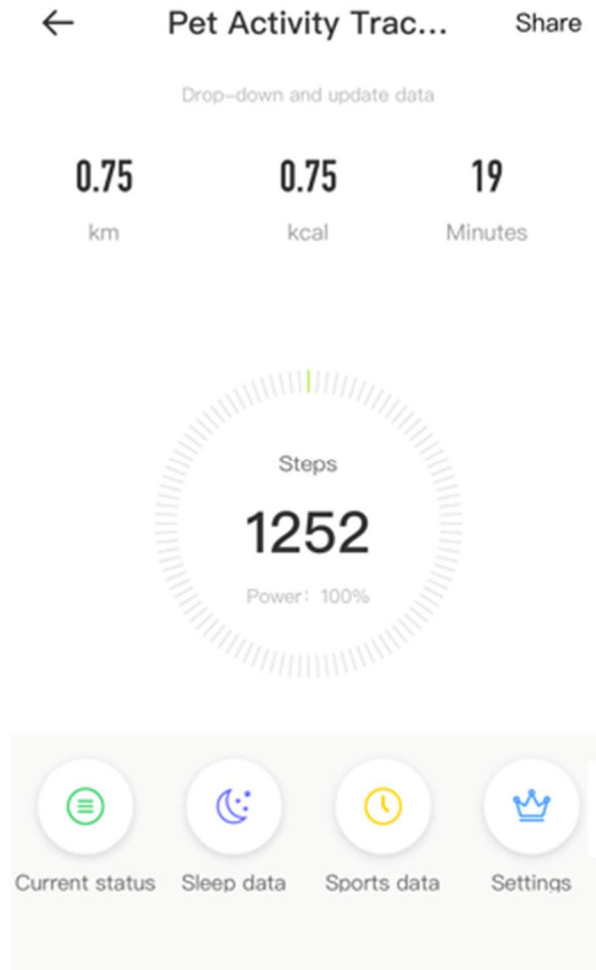
Follow the instructions

Scan the QR code on the back of the device

Connect bluetooth

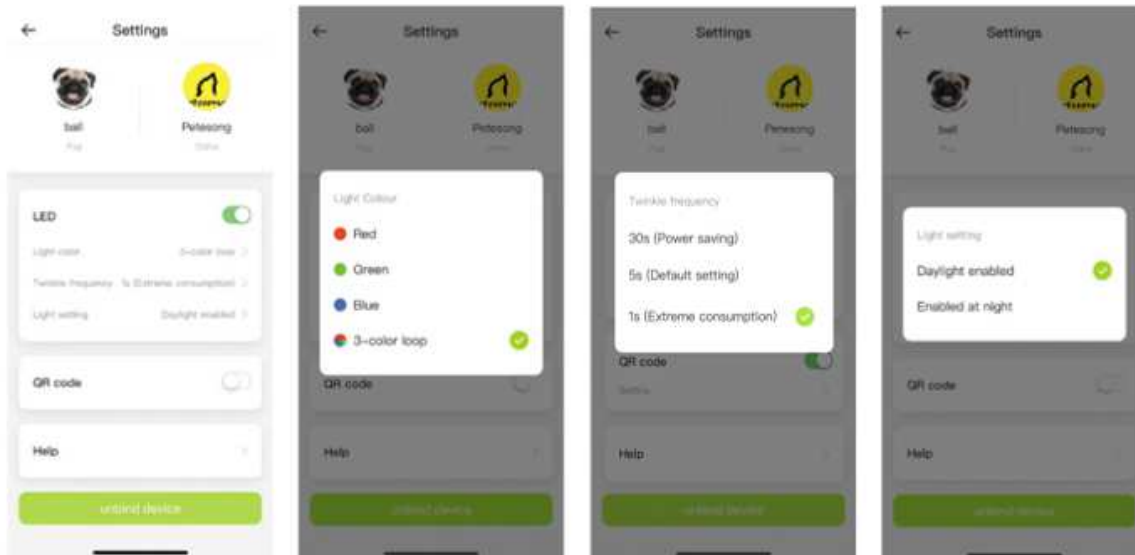
## 05 FUNCTION INTERFACE

Drop down the screen to update the pet activities. Here you can track your pet's data.

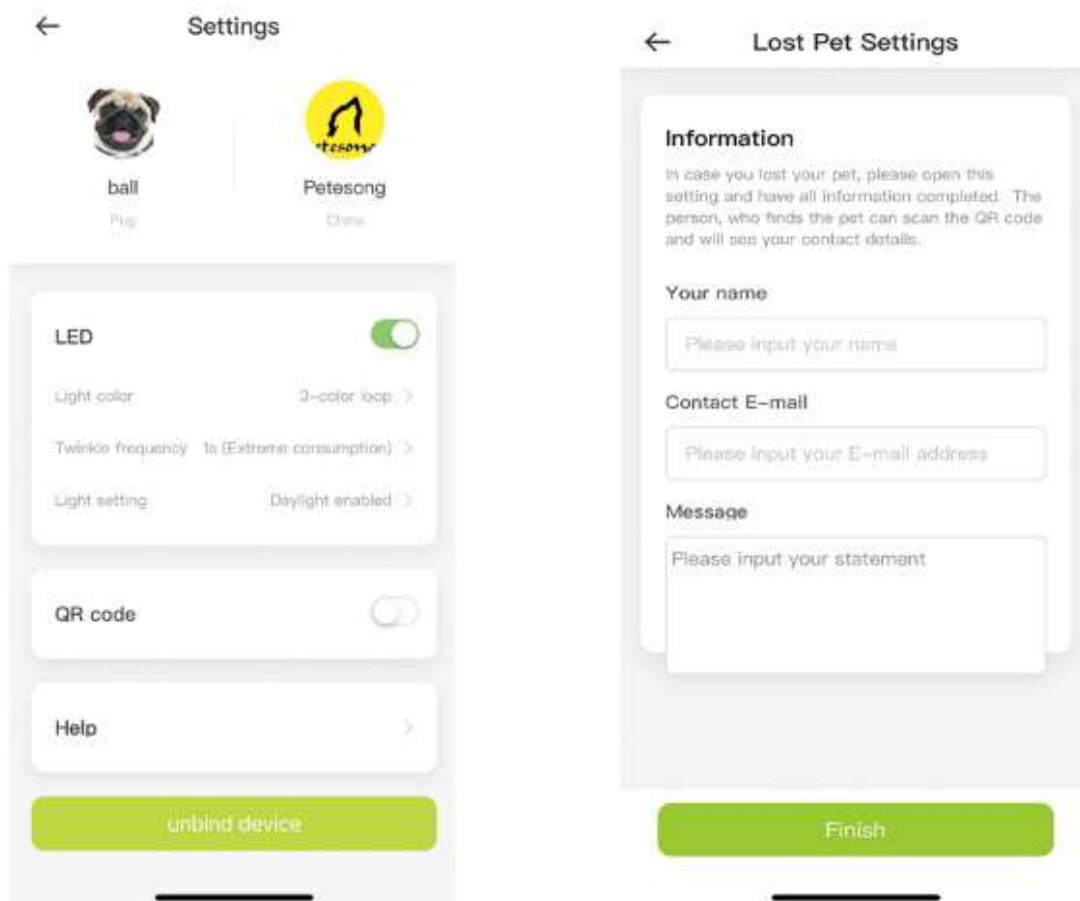


## 06 SETTING UP LED LIGHTS

Find your pet at night easily with the LED light function.



## 07 SET UP THE LOST PET QR CODE



## 08 THE LOST & FOUND QR CODE

If a pet is lost, and is found by someone, they can use the 'Lost and Found' QR code to track the owners.

People can scan the QR code on the back to find the owners contact information.

← Lost Pet Settings

**Information**

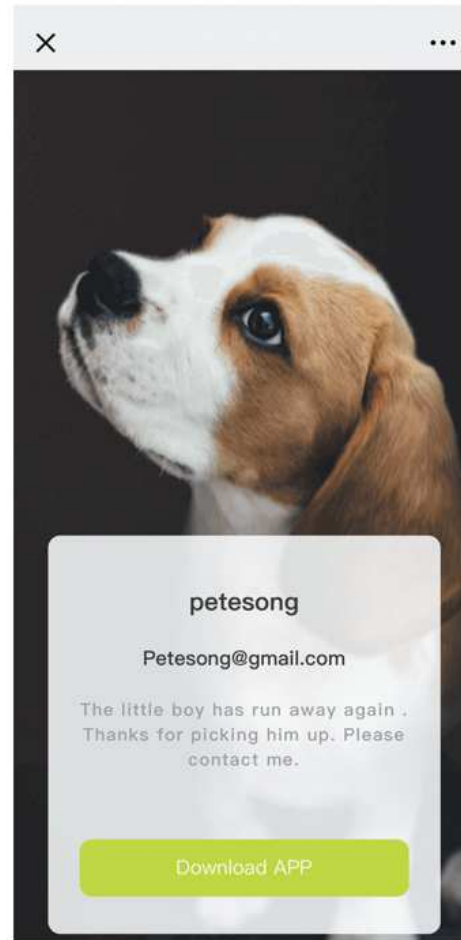
In case you lost your pet, please open this setting and have all information completed. The person, who finds the pet can scan the QR code and will see your contact details.

Your name

Contact E-mail

Message

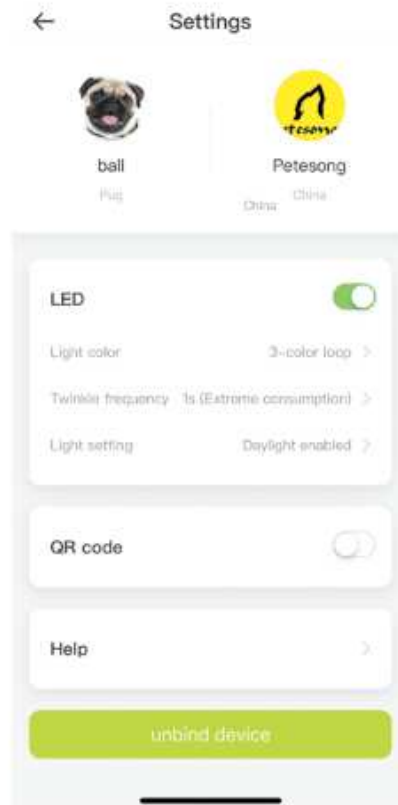
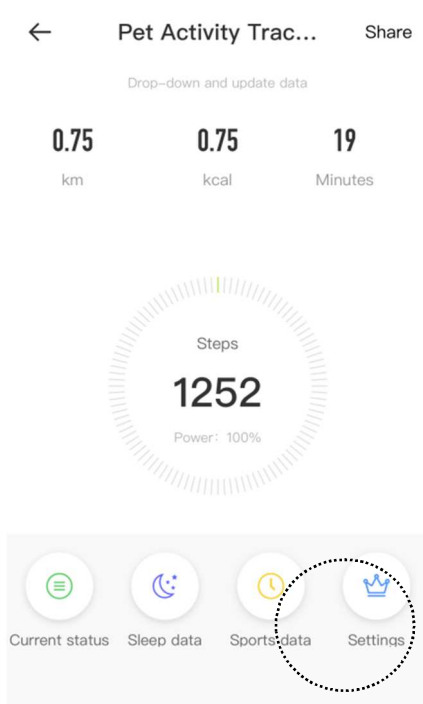
Finish





## 09 UNLINK THE TRACKER FROM YOUR DEVICE

The Pet Activity Tracker can only work for one pet at a time. To use the tracker on another pet, Unlink the tracker from the device. All pet activity data will be deleted when the device is unlinked.



## 10 ATTENTION

1. The Pet Activity Tracker is not medical equipment. Please consult your veterinarian for professional guidance and advice.
2. Please note that one account can connect to several trackers. If you want to use your tracker with a different device (account), please unlink the current tracker first. One tracker can only work for one pet. If you want to use on another pet, please unlink the device first.
3. The Bluetooth will stop searching for connection and enter to hibernation mode if there is no any connection after 90 seconds. Please shake it at least 3 seconds before use.
4. Pet Activity Tracker calculates every 10 minutes, if
  - less than 5 steps = as sleep
  - 5-15 steps = as rest
  - more than 15 steps = as awake

### **Product Specification:**

Bluetooth version: 4.0

Bluetooth connection range: up to 10meters

Rating: 3V CR2032

## Remark

This device complies with part 15 of the FCC Rules. Operation is subject to the following two conditions:

- (1) This device may not cause harmful interference, and
- (2) this device must accept any interference received, including interference that may cause undesired operation.

Please note that changes or modifications not expressly approved by the party responsible for compliance could void the user's authority to operate the equipment.

**Note:** This equipment has been tested and found to comply with the limits for a Class B digital

device, pursuant to part 15 of the FCC Rules. These limits are designed to provide reasonable protection against harmful interference in a residential installation. This equipment generates, uses and can radiate radio frequency energy and, if not installed and used in accordance with the instructions, may cause harmful interference to radio communications. However, there is no guarantee that interference will not occur in a particular installation. If this equipment does cause harmful interference to radio or television reception, which can be determined by turning the equipment off and on, the user is encouraged to try to correct the interference by one or more of the following measures:

- Reorient or relocate the receiving antenna.
- Increase the separation between the equipment and receiver.
- Connect the equipment into an outlet on a circuit different from that to which the receiver is connected.
- Consult the dealer or an experienced radio/TV technician for help.

# **Supplier's Declaration of Conformity**

## **47 CFR § 2.1077 Compliance Information**

**Unique Identifier: DT2019012**

### **Responsible Party – U.S. Contact Information**

**Elite Pet Group, Inc**

1955 Burgundy Place Ontario, CA 91761

Tel: 909-947-9088

Fax: 909-947-9009

[www.elitepetinc.com](http://www.elitepetinc.com)

### **FCC Compliance Statement**

This device complies with Part 15 of the FCC Rules. Operation is subject to the following two conditions: (1) This device may not cause harmful interference, and (2) this device must accept any interference received, including interference that may cause undesired operation.