

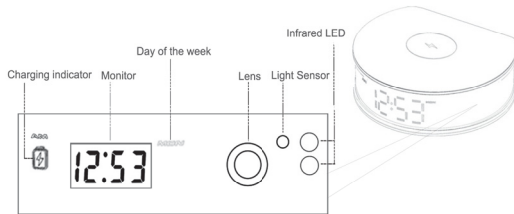
Quick Installation Guide

Smart Fast Wireless Charger

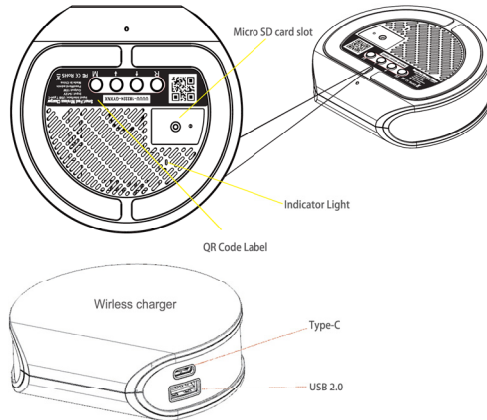


REV1.0.0

1.Product Diagram



Description	Introduction
Light Sensor	Infrared light adjustment
Lens	Capture videos
Infrared LED	Additional light in Low-light conditions
Monitor	Clock display



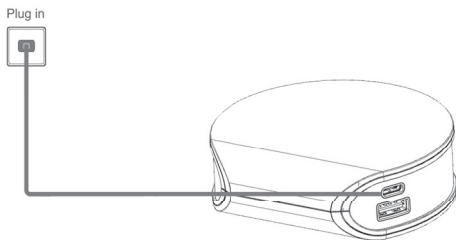
Description	Introduction
-------------	--------------

Micro SD Card Slot	Support Micro-SD card storage(up to 64G)
Type-c	Plug in connector of power supply
USB2.0	5V/1A Output
QR Code Label	Product information

RST/RESET	Press and hold [RST/RESET] for 5seconds, the device is restored to factory default setting
MODE	Mode set button
UP	Up button
DOWN	Down button

2. Wireless Charger Camera function

Plug in with original power adapter, the device is powered on.



Clock Mode

- Press [MODE] to enter the clock setting, the hours LED will flash, then press [UP] and [Down] to set the hours .
- After finish the setting of hours, then press [MODE] button again, the minutes LED will flash, press [UP] and [Down] to set the minutes.
- After finish the setting of minutes then press [MODE] button again, the week LED will flash, press [UP] and [Down] to set the week.
- Finally, press [MODE] to apply and finish the time setting.



- ☑ Press [UP] to switch to 12 hours' mode, press [DOWN] button to switch to 24 hours' mode.



Set Alarm

Long press [UP] for 3 seconds to enter the clock alarm setting, the hours LED will flash, then press [UP] and [Down] to set the hours.

Press [MODE] button again, the minutes LED will flash, press [UP] and [Down] to set the minutes.

Finally, press [MODE] to apply and finish the information screen.

. A total of three alarms can be set. When the alarm sounds, you can press any button or tap the device to turn off

Clear Alarm

Long press [Down] for 3 seconds to enter the clear clock alarm setting.

Rest Screen

Long press [MODE] for 5 seconds to enter the screen setting,

Press any button to light up the screen.

Brightness Adjustment

Brightness Adjustment

Press and hold [UP] for 5 seconds, you will hear a beep of "DI", and then enter the screen brightness adjustment, low, medium, high (default is low)

Reset

Press and hold [RST/RESET] for 10 seconds , the device is restored

to factory default setting.

Day and night light-sensitive detection

1. When it is dark, the screen will automatically turn off, and when it is detected that it is dawn, the screen will automatically display (automatic mode)
2. When it is dark, the screen will be automatically turned off by default, and the display will be on forever by pressing any key; if the power is turned off and on again, it will enter the automatic mode

Remarks: If you press and hold the [MODE] button for 5 seconds to enter the screen to go out, press any button and the screen is normal

1.Packing List

Open the package, then make sure the wireless charger camera (device) is intact, and with all the below accessories.



1 x Wireless Charger Cam



1 x USB Cable



1 x Quick Installation Guide



1 x Adapter

i Warm Tips

The use of non-original power adapter may cause instability of the devices or WiFi disconnection. To ensure the normal operation of the equipment, please use the power adapter provided by the original manufacturer.

2.Preparation

Please prepare the below stuff before you use it.

One smartphone or tablet PC(Mac or Windows PC is not acceptable) with IOS 12.0 or Android 8.0 system(higher version system is acceptable)



Android phone



iPad



iPhone

Wi-Fi Router

- Device can only connect to 2.4G Wi-Fi router.
- Make sure turn on the DHCP of router, and MAC address should be off.
- Distance between the router and the device should be within 3m during configuration.
- Please don't use special character such as Chinese, symbol to name the WiFi.
- Please don't use special character such as Chinese, symbol as the password for the WiFi and Wi-Fi password can not be blank.



Wi-Fi Router

Install " IOTLiving " App

- Search " IOTLiving " App from Apple Store or Google Play, then download.
- Scan the QR Code below and install the App.



iOS APP

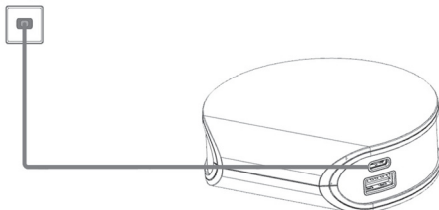


Android APP

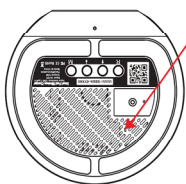


3. Operation Instruction

① Plug in



② Wait for 60 seconds after plug in, the device starts and the red LED indicator will blink.



LED Light State Introductions

Blue LED indicator	Light off: No power
	Light solid: On power
	Light blink: System running normally
Red LED indicator	Light off: Wi-Fi no connection
	Light solid: Wi-Fi connected
	Light blink: Waiting connect to Wi-Fi

i WARNING

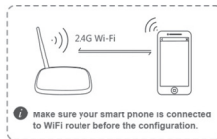
- Make sure to use the adapter provided to power the device.
- Please remove the adapter in thunderstorm to avoid the possible damage.

4. Configure Device

Open the App




1 Click "+"

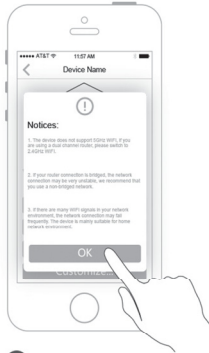


2 Make sure your smart phone is connected to WiFi router before the configuration.



2 Click "First Add"

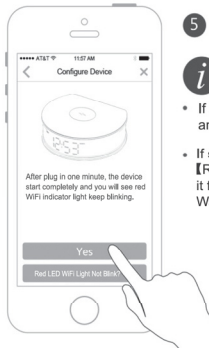
 Please choose your device type correctly for configuration.



3 Configuration note



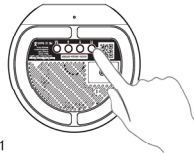
4 Name the device



5 Configure Device

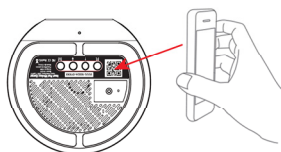
i WARNING

- If red LED WiFi light not blink , please switch off and turn on the device again.
- If still red WiFi light not blink, please press **[RST/SET]** button at the backside and hold it for 5seconds, the device go back the default. Wait for 60 seconds, the device will restart.





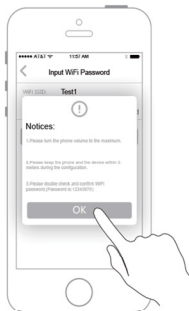
6 Scan the QR code on the back housing



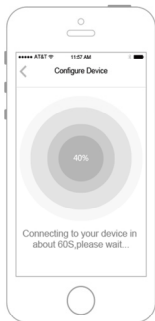
7 Input the right password of the WiFi

WARNING

- Don't use the Chinese or special symbol to name the WiFi.
- Don't use the Chinese or special symbol as the password of WiFi.



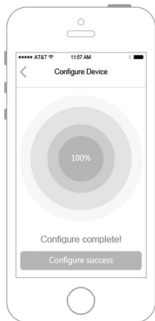
8 Configuration note



- 9 Please put your smart phone or tablet PC close to the device within 3 m, then press to configure.



- i Turn the volume of smart-phone or tablet PC to maximum.

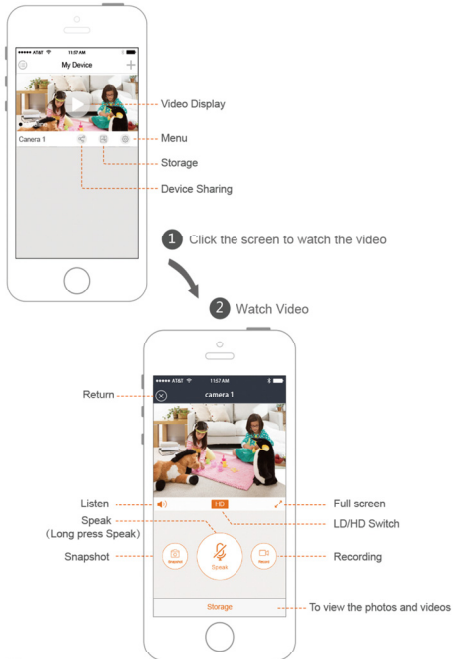



- 10 Wait for about 60 seconds, the configuration will be done. (After the configuration is successful, the green LED indicator will be off in about 60 seconds.)

i **If configuration failed**

- Please make sure input right password (check the capital & small letter, blank)
- Please keep the distance between the device and the WIFI router within 5m.
- Press and hold [RESET] for 5 seconds, the device is restored to factory default setting, repeat the configuration again.

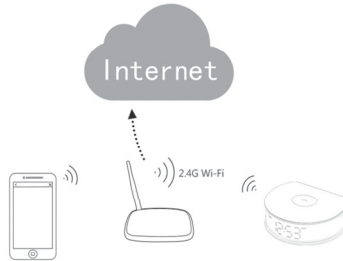
5. Watch Video



 If the live video is frozen, please close it and open again. If it is still frozen, please power off and restart the device and the WiFi router, and keep the device and the WiFi router within 3m to configure again.

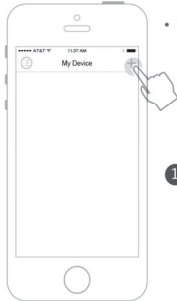
6. More user in same device.

Option 1: Add more users in same Lan



i WARNING

- Make sure the Wi-Fi is connected to Internet.
- Make sure the smart phone/table PC are in same Lan.
- Make sure to input right password.



- 1 Open App, Click "+"



2 Click "Manual Add"



3 Click "LAN Search Add"

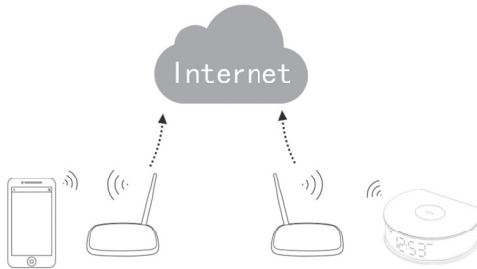


4 Click to choose the device (If the device is not available, click "Refresh")



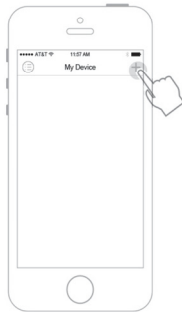
5 Input the right password of the device, click "Save".

Option 2: The device and smart phone are not in same Lan.



i **WARNING**

- Please make sure the device and smart phone or tablet PC are connected to Internet.
- Make sure ID of the device is right.
- Make sure the password of the device is right.



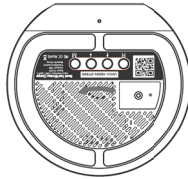
- 1 Open App, Click "+"



2 Click "Manual Add"



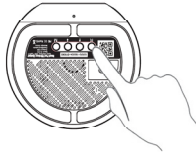
3 Input the ID and password of the device, click "Save".



Switch Wi-Fi connection

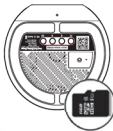
When you want to change from original Wi-Fi connection to another Wi-Fi connection, please reset the wireless charger camera firstly by the following steps:

- Press and hold [RST/SET] for 5 seconds.
- Then release the button and then wait for 40 seconds.
- After the device started, if the red LED indicator does not blink, please reset the device to factory default setting.
- Now you can connect wireless charger camera to the network.

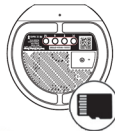


Micro SD card user caution

- To ensure SD card video recording works steady, we recommend Class 10 or above version high speed Micro SD card.
- To make sure the device works normally, please format the SD card before the first time use.
- Before insert or pull out the SD card, please power off the device. Insert the SD card properly into the slot as below.



✓ Correct



✗ Wrong

FAQ

- **Q: Should I have to plugged the USB power all the time?**
 - > Yes, because there is no battery, please plug in the USB power all the time.
- **Q: How many users can watch the video the same time?**
 - > 5 persons maximum.
- **Q: Whether device supports ONVIF?**
 - > Yes, it is standard.
- **Q: How many cameras does the App holds at the same time?**
 - > To make sure the App works well please do not connect over 10 cameras.
- **Q: Can I record the live video into my phone?**
 - > Yes, the manually record will saved into your phone. But the auto record will saved into the SD card.
- **Q: Whether device supports SD video recording?**
 - > Yes, up to 64G Micro-SD card.
- **Q: How long does my SD card can record ?**
 - > If your camera is running Full Time recording, one 32G SD card can record about 4 days. If the SD card is no space for new video, it will erase the oldest video to save the newest.
- **Q: What is the format of the video recording on the Micro-SD card?**
 - > AVI, H.264 and most of the main media player format.
- **Q: How to use smart phone to watch the SD card recording?**
 - > Press the APP, press the local recording-> "SD", then you can watch the video recording.

FAQ

- **Q: Can I turn off the Night Vision?**
 - > Yes, Open App--Enter the view screen--click the Gear icon--Click the Infrared Light setting--Select OFF.
- **Q: Why system prompt that wireless charger camera is offline after added?**
 - > Please click software"reconnect"or check whether the wireless charger camera power supply and the network connection is OK.
- **Q: Why stuck and time-lag situation happens sometimes when watching the video?**
 - > Please check your network connection or set up video quality to "low" pattern under advanced setting.
- **Q: What can I do if I forgot the wireless charger camera password?**
 - > Press [RST/SET] button on the unit and hold 5 seconds at least, the device will be reset to the factory default setting in about 40 seconds.

FAQ

For more questions, please open App and click "FAQ"



1 Open the App, then click "☰"



2 Click "FAQ" enter FAQ page

FCC Warning Statement

Changes or modifications not expressly approved by the party responsible for compliance could void the user's authority to operate the equipment. This equipment has been tested and found to comply with the limits for a Class B digital device, pursuant to Part 15 of the FCC Rules. These limits are designed to provide reasonable protection against harmful interference in a residential installation. This equipment generates uses and can radiate radio frequency energy and, if not installed and used in accordance with the instructions, may cause harmful interference to radio communications. However, there is no guarantee that interference will not occur in a particular installation. If this equipment does cause harmful interference to radio or television reception, which can be determined by turning the equipment off and on, the user is encouraged to try to correct the interference by one or more of the following measures:

- - Reorient or relocate the receiving antenna.
- - Increase the separation between the equipment and receiver.
- - Connect the equipment into an outlet on a circuit different from that to which the receiver is connected.
- - Consult the dealer or an experienced radio/TV technician for help.

This device complies with part 15 of the FCC Rules. Operation is subject to the following two conditions: (1) This device may not cause harmful interference, and (2) this device must accept any interference received, including interference that may cause undesired operation.

RF Exposure Statement

To maintain compliance with FCC's RF Exposure guidelines, This equipment should be installed and operated with minimum distance of 20cm the radiator your body. This device and its antenna(s) must not be co-located or operation in conjunction with any other antenna or transmitter.

About the User Manual:

The user manual is used as a guide.

The photos, graphic, charts and illustrations provided in the user Manual are only used to explanation and interpretation, which may be different from specific products, please refer to the real object.

The user manual maybe updated because of the products version upgrade or other requirements, if you need the latest version of the user manual, please contact customer service for the latest version of the user manual.