

**Shenzhen Global Test Service Co.,Ltd.**

No.7-101 and 8A-104, Building 7 and 8, DCC Cultural and Creative Garden, No.98, Pingxin North Road, Shangmugu Community, Pinghu Street, Longgang District, Shenzhen, Guangdong

FCC PART 15 SUBPART C TEST REPORT**FCC PART 15.247****Report Reference No.....: GTS20221019011-1-6****FCC ID.....: 2AL54-M546**

Compiled by

(position+printed name+signature) : File administrators Peter Xiao

Supervised by

(position+printed name+signature) : Test Engineer Jenny Zeng

Approved by

(position+printed name+signature) : Manager Jason Hu

Date of issue: Dec.08, 2022

Representative Laboratory Name.: Shenzhen Global Test Service Co.,Ltd.

Address: No.7-101 and 8A-104, Building 7 and 8, DCC Cultural and Creative Garden, No.98, Pingxin North Road, Shangmugu Community, Pinghu Street, Longgang District, Shenzhen, Guangdong, China

Applicant's name.....: CarePredict, Inc.

Address: 324 S. University Dr Plantation, Florida 33324 USA

Test specificationStandard.....: **FCC Part 15.247**

TRF Originator.....: Shenzhen Global Test Service Co.,Ltd.

Master TRF: Dated 2014-12

Shenzhen Global Test Service Co.,Ltd. All rights reserved.

This publication may be reproduced in whole or in part for non-commercial purposes as long as the Shenzhen Global Test Service Co.,Ltd. is acknowledged as copyright owner and source of the material. Shenzhen Global Test Service Co.,Ltd. takes no responsibility for and will not assume liability for damages resulting from the reader's interpretation of the reproduced material due to its placement and context.

Test item description

Trade Mark.....: N/A

Manufacturer.....: Kinglisheng(Shenzhen) Electronic & Technology Co.,Limited

Model/Type reference.....: M546

Listed Models.....: N/A

Modulation Type.....: GFSK

Operation Frequency.....: From 2402MHz to 2480MHz

Hardware Version.....: N/A

Software Version.....: N/A

Rating.....: DC 3.8V by battery

Result.....: **PASS**

TEST REPORT

| | |
|--|-------------------------------|
| Test Report No. : GTS20221019011-1-6 | Dec.08, 2022 Date of issue |
|--|-------------------------------|

Equipment under Test : Care Predict

Model /Type : M546

Listed model : N/A

Applicant : **CarePredict, Inc.**

Address : 324 S. University Dr Plantation, Florida 33324 USA

Manufacturer : **Kinglisheng(Shenzhen) Electronic & Technology Co.,Limited**

Address : 2F, Building 4, Shayi Beifang Yongfa Technology Park, Xinhe Road,
Gonghe Community, Shajing Street Baoan District, Shenzhen City,
China, Zip code: 518104

| | |
|---------------------|-------------|
| Test Result: | PASS |
|---------------------|-------------|

The test report merely corresponds to the test sample.

It is not permitted to copy extracts of these test result without the written permission of the test laboratory.

Contents

| | |
|--|-----------|
| 1. TEST STANDARDS | 4 |
| 2. SUMMARY | 5 |
| 2.1. General Remarks | 5 |
| 2.2. Product Description | 5 |
| 2.3. Equipment Under Test | 6 |
| 2.4. Short description of the Equipment under Test (EUT) | 6 |
| 2.5. EUT operation mode | 6 |
| 2.6. Block Diagram of Test Setup | 7 |
| 2.7. EUT Exercise Software | 7 |
| 2.8. Special Accessories | 7 |
| 2.9. External I/O Cable | 7 |
| 2.10. Related Submittal(s) / Grant (s) | 7 |
| 2.11. Modifications | 7 |
| 3. TEST ENVIRONMENT | 8 |
| 3.1. Address of the test laboratory | 8 |
| 3.2. Test Facility | 8 |
| 3.3. Environmental conditions | 8 |
| 3.4. Statement of the measurement uncertainty | 8 |
| 3.5. Test Description | 9 |
| 3.6. Equipments Used during the Test..... | 10 |
| 4. TEST CONDITIONS AND RESULTS | 11 |
| 4.1. AC Power Conducted Emission | 11 |
| 4.2. Radiated Emission | 12 |
| 4.3. Maximum Peak Output Power | 17 |
| 4.4. Power Spectral Density | 18 |
| 4.5. 99% and 6dB Bandwidth | 19 |
| 4.6. Conducted Spurious Emissions and Band Edge Compliance of RF Emission..... | 20 |
| 4.7. Antenna Requirement | 22 |
| 5. TEST SETUP PHOTOS OF THE EUT | 23 |
| 6. EXTERNAL AND INTERNAL PHOTOS OF THE EUT | 24 |

1. TEST STANDARDS

The tests were performed according to following standards:

[FCC Rules Part 15.247](#): Frequency Hopping, Direct Spread Spectrum and Hybrid Systems that are in operation within the bands of 902-928 MHz, 2400-2483.5 MHz, and 5725-5850 MHz.

[ANSI C63.10-2013](#): American National Standard for Testing Unlicensed Wireless Devices

[KDB 558074 D01 DTS Meas Guidance v05r02](#): Guidance for Performing Compliance Measurements on Digital Transmission Systems (DTS) Operating Under §15.247.

2. SUMMARY

2.1. General Remarks

| | | |
|--------------------------------|---|---------------|
| Date of receipt of test sample | : | Nov. 02, 2022 |
| | : | |
| Testing commenced on | : | Nov. 02, 2022 |
| | : | |
| Testing concluded on | : | Dec.07, 2022 |

2.2. Product Description

| | |
|----------------------|---|
| Product Name | Care Predict |
| Trade Mark | N/A |
| Model/Type reference | M546 |
| List Models | N/A |
| Model Declaration | N/A |
| Power supply: | DC 3.8V by battery |
| Sample ID | GTS20221019011-1-S0001-1#>S20221019011-1-S0001-2# |
| Bluetooth | |
| Operation frequency | 2402-2480MHz |
| Channel Number | 40 channels for Bluetooth (DTS) |
| Channel Spacing | 2MHz for Bluetooth (DTS) |
| Modulation Type | GFSK for Bluetooth (DTS) |
| WIFI(2.4G Band) | |
| Frequency Range | 2412MHz ~ 2462MHz |
| Channel Spacing | 5MHz |
| Channel Number | 11 Channel for 20MHz bandwidth(2412~2462MHz) 7 Channel for 40MHz bandwidth(2422~2452MHz) |
| Modulation Type | 802.11b: DSSS; 802.11g/n: OFDM |
| Antenna Description | Internal Antenna,-1.00dBi(Max.) for 2.4G Band |

2.3. Equipment Under Test

Power supply system utilised

| | | | | | |
|----------------------|---|----------------------------------|----------------------------------|-----------------------|-------------|
| Power supply voltage | : | <input type="radio"/> | 230V / 50 Hz | <input type="radio"/> | 120V / 60Hz |
| | | <input type="radio"/> | 12 V DC | <input type="radio"/> | 24 V DC |
| | | <input checked="" type="radio"/> | Other (specified in blank below) | | |

DC 3.8V

2.4. Short description of the Equipment under Test (EUT)

This is a Care Predict .

For more details, refer to the user's manual of the EUT.

2.5. EUT operation mode

The Applicant provides communication tools software to control the EUT for staying in continuous transmitting (Duty Cycle more than 98%) and receiving mode for testing .There are 40 channels provided to the EUT. Channel 00/19/39 was selected to test.

| Mode of Operations | Frequency Range (MHz) | Data Rate (Mbps) |
|------------------------|-----------------------|------------------|
| (BLE) | 2402 | 1 |
| | 2440 | 1 |
| | 2480 | 1 |
| For Conducted Emission | | |
| Test Mode | | TX Mode |
| For Radiated Emission | | |
| Test Mode | | TX Mode |

| Channel | Frequency(MHz) | Channel | Frequency(MHz) |
|---------|----------------|---------|----------------|
| 0 | 2402 | 20 | 2442 |
| 1 | 2404 | 21 | 2444 |
| 2 | 2406 | 22 | 2446 |
| -- | -- | -- | -- |
| -- | -- | -- | -- |
| 18 | 2438 | 38 | 2478 |
| 19 | 2440 | 39 | 2480 |

The EUT has been tested under operating condition.

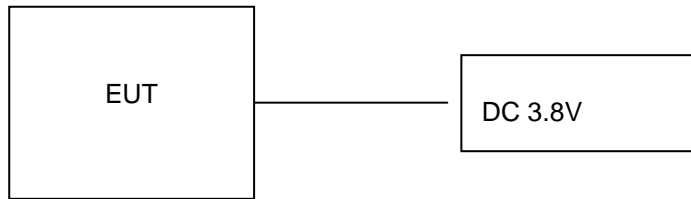
This test was performed with EUT in X, Y, Z position and the worst case was found when EUT in X position.

AC conducted emission pre-test at both at AC 120V/60Hz and AC 240V/60Hz modes, recorded worst case.

Worst-case mode and channel used for 150 KHz-30 MHz power line conducted emissions was the mode and channel with the highest output power, which was determined to be BT LE mode (MCH).

Worst-case mode and channel used for 9 KHz-1000 MHz radiated emissions was the mode and channel with the highest output power, that was determined to be BT LE mode(MCH).

2.6. Block Diagram of Test Setup



2.7. EUT Exercise Software

The system was configured for testing in a continuous transmits condition and change test channels by software (InstallBlueSuiteCda_3_3_14_1471) provided by application.

2.8. Special Accessories

| Manufacturer | Description | Model | Serial Number | Certificate |
|--------------|-------------|-------|---------------|-------------|
| - | - | - | -- | - |

2.9. External I/O Cable

| I/O Port Description | Quantity | Cable |
|----------------------|----------|-------|
| - | 1 | - |

2.10. Related Submittal(s) / Grant (s)

This submittal(s) (test report) is intended for **FCC ID: 2AL54-M546** filing to comply with Section 15.247 of the FCC Part 15, Subpart C Rules.

2.11. Modifications

No modifications were implemented to meet testing criteria.

3. TEST ENVIRONMENT

3.1. Address of the test laboratory

Shenzhen Global Test Service Co.,Ltd.

No.7-101 and 8A-104, Building 7 and 8, DCC Cultural and Creative Garden, No.98, Pingxin North Road, Shangmugu Community, Pinghu Street, Longgang District, Shenzhen, Guangdong, China.

3.2. Test Facility

The test facility is recognized, certified, or accredited by the following organizations:

CNAS (No. CNAS L8169)

Shenzhen Global Test Service Co., Ltd. has been assessed and proved to be in compliance with CNAS-CL01 Accreditation Criteria for Testing and Calibration Laboratories (identical to ISO/IEC 17025: 2019 General Requirements) for the Competence of Testing and Calibration Laboratories.

A2LA (Certificate No. 4758.01)

Shenzhen Global Test Service Co., Ltd. has been assessed by the American Association for Laboratory Accreditation (A2LA). Certificate No. 4758.01.

Industry Canada Registration Number. is 24189.

FCC Designation Number is CN1234.

FCC Registered Test Site Number is 165725.

3.3. Environmental conditions

During the measurement the environmental conditions were within the listed ranges:

| | |
|-----------------------|--------------|
| Temperature: | 15-35 ° C |
| | |
| Humidity: | 30-60 % |
| | |
| Atmospheric pressure: | 950-1050mbar |

3.4. Statement of the measurement uncertainty

The data and results referenced in this document are true and accurate. The reader is cautioned that there may be errors within the calibration limits of the equipment and facilities. The measurement uncertainty was calculated for all measurements listed in this test report acc. to CISPR 16 - 4 „Specification for radio disturbance and immunity measuring apparatus and methods – Part 4: Uncertainty in EMC Measurements“ and is documented in the Shenzhen Global Test Service Co.,Ltd. quality system acc. to DIN EN ISO/IEC 17025. Furthermore, component and process variability of devices similar to that tested may result in additional deviation. The manufacturer has the sole responsibility of continued compliance of the device.

Hereafter the best measurement capability for Shenzhen GTS laboratory is reported:

| Test | Range | Measurement Uncertainty | Notes |
|-----------------------|------------|-------------------------|-------|
| Radiated Emission | 30~1000MHz | 4.10 dB | (1) |
| Radiated Emission | 1~18GHz | 4.32 dB | (1) |
| Radiated Emission | 18-40GHz | 5.54 dB | (1) |
| Conducted Disturbance | 0.15~30MHz | 3.12 dB | (1) |

This uncertainty represents an expanded uncertainty expressed at approximately the 95% confidence level using a coverage factor of k=2.

3.5. Test Description

| Applied Standard: FCC Part 15 Subpart C | | | | |
|---|--|--|-----------|------------|
| FCC Rules | Description of Test | Test Sample | Result | Remark |
| / | On Time and Duty Cycle | GTS20221019011-1-S0001-1# | / | / |
| §15.247(b) | Maximum Conducted Output Power | GTS20221019011-1-S0001-1# | Compliant | Appendix A |
| §15.247(e) | Power Spectral Density | GTS20221019011-1-S0001-1# | Compliant | Appendix A |
| §15.247(a)(2) | 6dB Bandwidth | GTS20221019011-1-S0001-1# | Compliant | Appendix A |
| §2.1047 | 99% Occupied Bandwidth | GTS20221019011-1-S0001-1# | Compliant | Appendix A |
| §15.209, §15.247(d) | Conducted Spurious Emissions and Band Edges Test | GTS20221019011-1-S0001-1# | Compliant | Appendix A |
| §15.209, §15.247(d) | Radiated Spurious Emissions | GTS20221019011-1-S0001-1# GTS20221019011-1-S0001-2# | Compliant | Note 1 |
| §15.205 | Emissions at Restricted Band | GTS20221019011-1-S0001-1# | Compliant | Note 1 |
| §15.207(a) | AC Conducted Emissions | / | N/A | N/A |
| §15.203 §15.247(c) | Antenna Requirements | GTS20221019011-1-S0001-1# | Compliant | Note 1 |
| §15.247(i)§2.1093 | RF Exposure | / | Compliant | Note 2 |

Remark:

1. The measurement uncertainty is not included in the test result.
2. NA = Not Applicable; NP = Not Performed
3. Note 1 – Test results inside test report;
4. Note 2 – Test results in other test report (MPE Report).
5. We tested all test mode and recorded worst case in report

3.6. Equipments Used during the Test

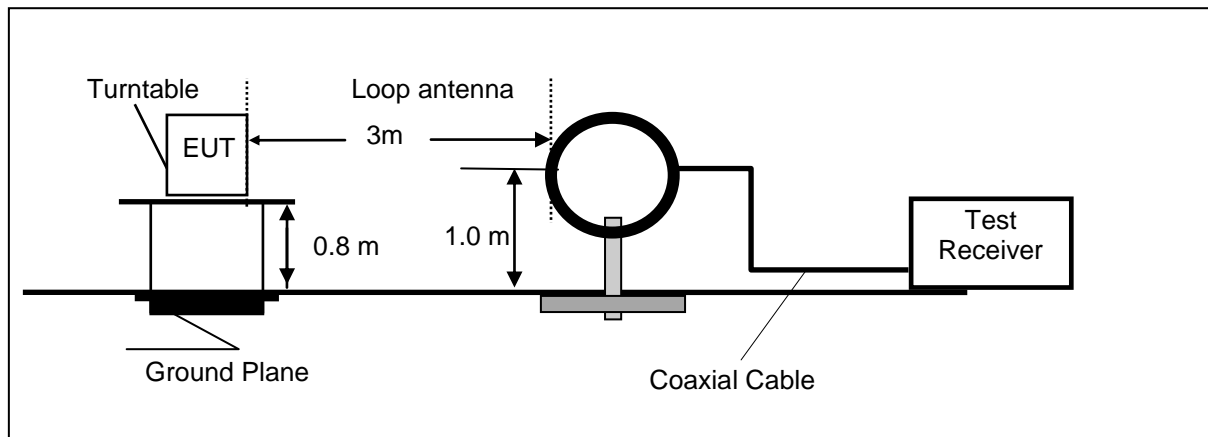
| Test Equipment | Manufacturer | Model No. | Serial No. | Calibration Date | Calibration Due Date |
|----------------------------|-----------------------------------|-----------------------|-----------------|------------------|----------------------|
| LISN | CYBERTEK | EM5040A | E1850400105 | 2022/07/13 | 2023/07/12 |
| LISN | R&S | ESH2-Z5 | 893606/008 | 2022/07/13 | 2023/07/12 |
| EMI Test Receiver | R&S | ESPI3 | 101841-cd | 2022/07/13 | 2023/07/12 |
| EMI Test Receiver | R&S | ESCI7 | 101102 | 2022/09/09 | 2023/09/08 |
| Spectrum Analyzer | Agilent | N9020A | MY48010425 | 2022/09/09 | 2023/09/08 |
| Spectrum Analyzer | R&S | FSV40 | 100019 | 2022/07/13 | 2023/07/12 |
| Vector Signal generator | Agilent | N5181A | MY49060502 | 2022/07/13 | 2023/07/12 |
| Signal generator | Agilent | N5182A | 3610AO1069 | 2022/09/09 | 2023/09/08 |
| Climate Chamber | ESPEC | EL-10KA | A20120523 | 2022/09/09 | 2023/09/08 |
| Controller | EM Electronics | Controller EM 1000 | N/A | N/A | N/A |
| Horn Antenna | Schwarzbeck | BBHA 9120D | 01622 | 2022/09/09 | 2023/09/08 |
| Active Loop Antenna | Beijing Da Ze Technology Co.,Ltd. | ZN30900C | 15006 | 2022/09/09 | 2023/09/08 |
| Bilog Antenna | Schwarzbeck | VULB9163 | 000976 | 2022/07/13 | 2023/07/12 |
| Broadband Horn Antenna | SCHWARZBECK | BBHA 9170 | 791 | 2022/09/09 | 2023/09/08 |
| Amplifier | Schwarzbeck | BBV 9743 | #202 | 2022/07/13 | 2023/07/12 |
| Amplifier | Schwarzbeck | BBV9179 | 9719-025 | 2022/07/13 | 2023/07/12 |
| Amplifier | EMCI | EMC051845B | 980355 | 2022/07/13 | 2023/07/12 |
| Temperature/Humidity Meter | Gangxing | CTH-608 | 02 | 2022/07/13 | 2023/07/12 |
| High-Pass Filter | K&L | 9SH10-2700/X12750-O/O | KL142031 | 2022/07/13 | 2023/07/12 |
| High-Pass Filter | K&L | 41H10-1375/U12750-O/O | KL142032 | 2022/07/13 | 2023/07/12 |
| RF Cable(below 1GHz) | HUBER+SUHNER | RG214 | RE01 | 2022/07/13 | 2023/07/12 |
| RF Cable(above 1GHz) | HUBER+SUHNER | RG214 | RE02 | 2022/07/13 | 2023/07/12 |
| Data acquisition card | Agilent | U2531A | TW53323507 | 2022/07/13 | 2023/07/12 |
| Power Sensor | Agilent | U2021XA | MY5365004 | 2022/07/13 | 2023/07/12 |
| Test Control Unit | Tonscend | JS0806-1 | 178060067 | 2022/07/13 | 2023/07/12 |
| Automated filter bank | Tonscend | JS0806-F | 19F8060177 | 2022/07/13 | 2023/07/12 |
| EMI Test Software | Tonscend | JS1120-1 | Ver 2.6.8.0518 | / | / |
| EMI Test Software | Tonscend | JS1120-3 | Ver 2.5.77.0418 | / | / |
| EMI Test Software | Tonscend | JS32-CE | Ver 2.5 | / | / |
| EMI Test Software | Tonscend | JS32-RE | Ver 2.5.1.8 | / | / |

Note: 1. The Cal.Interval was one year.

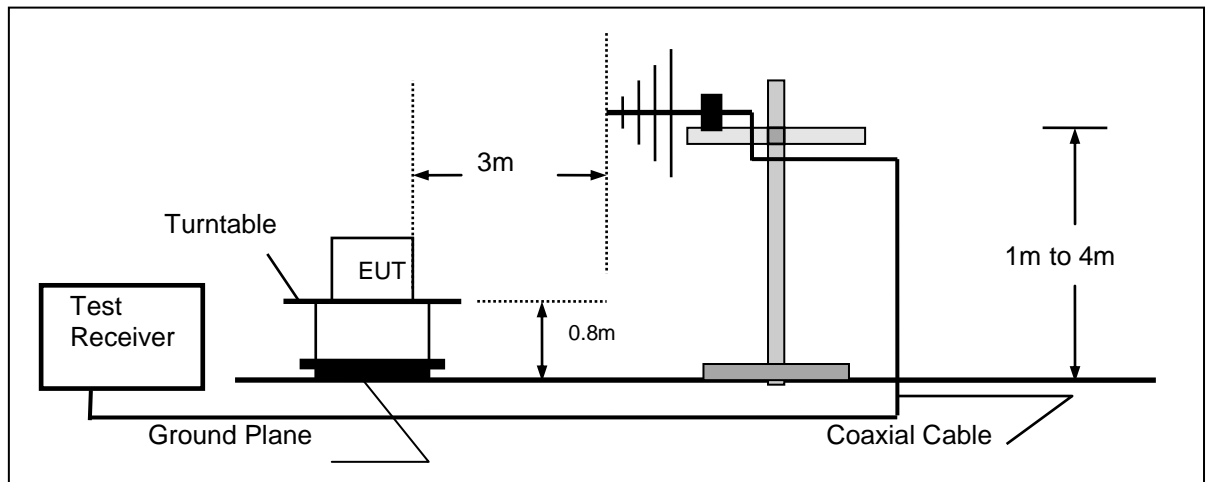
4.2. Radiated Emission

TEST CONFIGURATION

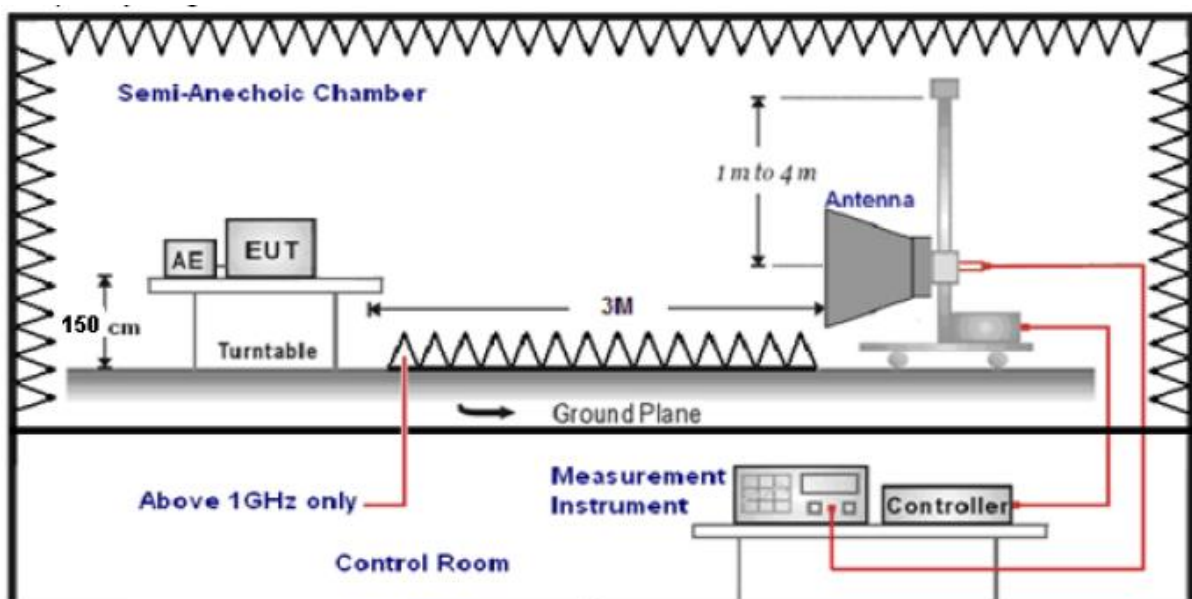
Frequency range 9 KHz – 30MHz



Frequency range 30MHz – 1000MHz



Frequency range above 1GHz-25GHz



TEST PROCEDURE

1. The EUT was placed on a turn table which is 0.8m above ground plane when testing frequency range 9 KHz –1GHz;the EUT was placed on a turn table which is 1.5m above ground plane when testing frequency range 1GHz – 25GHz.
2. Maximum procedure was performed by raising the receiving antenna from 1m to 4m and rotating the turn table from 0° to 360° to acquire the highest emissions from EUT.
3. And also, each emission was to be maximized by changing the polarization of receiving antenna both horizontal and vertical.
4. Repeat above procedures until all frequency measurements have been completed.
5. Radiated emission test frequency band from 30MHz to 25GHz.
6. The distance between test antenna and EUT as following table states:

| Test Frequency range | Test Antenna Type | Test Distance |
|----------------------|----------------------------|---------------|
| 9KHz-30MHz | Active Loop Antenna | 3 |
| 30MHz-1GHz | Ultra-Broadband Antenna | 3 |
| 1GHz-18GHz | Double Ridged Horn Antenna | 3 |
| 18GHz-25GHz | Horn Antenna | 1 |

7. Setting test receiver/spectrum as following table states:

| Test Frequency range | Test Receiver/Spectrum Setting | Detector |
|----------------------|---|----------|
| 9KHz-150KHz | RBW=200Hz/VBW=3KHz, Sweep time=Auto | QP |
| 150KHz-30MHz | RBW=9KHz/VBW=100KHz, Sweep time=Auto | QP |
| 30MHz-1GHz | RBW=120KHz/VBW=1000KHz, Sweep time=Auto | QP |
| 1GHz-40GHz | Peak Value: RBW=1MHz/VBW=3MHz, Sweep time=Auto Average Value: RBW=1MHz/VBW=10Hz, Sweep time=Auto | Peak |

Field Strength Calculation

The field strength is calculated by adding the Antenna Factor and Cable Factor and subtracting the Amplifier Gain and Duty Cycle Correction Factor(if any) from the measured reading. The basic equation with a sample calculation is as follows:

$$FS = RA + AF + CL - AG$$

| | |
|---------------------------|--|
| Where FS = Field Strength | CL = Cable Attenuation Factor (Cable Loss) |
| RA = Reading Amplitude | AG = Amplifier Gain |
| AF = Antenna Factor | |

$$Transd=AF +CL-AG$$

RADIATION LIMIT

For intentional device, according to § 15.209(a), the general requirement of field strength of radiated emission from intentional radiators at a distance of 3 meters shall not exceed the following table. According to § 15.247(d), in any 100kHz bandwidth outside the frequency band in which the EUT is operating, the radio frequency power that is produced by the intentional radiator shall be at least 20dB below that in the 100kHz bandwidth within the band that contains the highest level of desired power.

The pre-test have done for the EUT in three axes and found the worst emission at position shown in test setup photos.

| Frequency (MHz) | Distance (Meters) | Radiated (dBμV/m) | Radiated (μV/m) |
|-----------------|-------------------|--|-----------------------|
| 0.009-0.49 | 3 | $20\log(2400/F(\text{KHz}))+40\log(300/3)$ | $2400/F(\text{KHz})$ |
| 0.49-1.705 | 3 | $20\log(24000/F(\text{KHz}))+40\log(30/3)$ | $24000/F(\text{KHz})$ |
| 1.705-30 | 3 | $20\log(30)+40\log(30/3)$ | 30 |
| 30-88 | 3 | 40.0 | 100 |
| 88-216 | 3 | 43.5 | 150 |
| 216-960 | 3 | 46.0 | 200 |
| Above 960 | 3 | 54.0 | 500 |

TEST RESULTS

Remark: We measured Radiated Emission at GFSK mode from 9KHz to 25GHz in AC120V and the worst case was recorded.

| | | | |
|---------------|------------|----------------|-----|
| Temperature | 25℃ | Humidity | 58% |
| Test Engineer | Jenny Zeng | Configurations | BT |

For 9 KHz~30MHz

| Freq. (MHz) | Level (dBuV) | Over Limit (dB) | Over Limit (dBuV) | Remark |
|-------------|--------------|-----------------|-------------------|----------|
| - | - | - | - | See Note |

Note:

The amplitude of spurious emissions which are attenuated by more than 20 dB below the permissible value has no need to be reported.

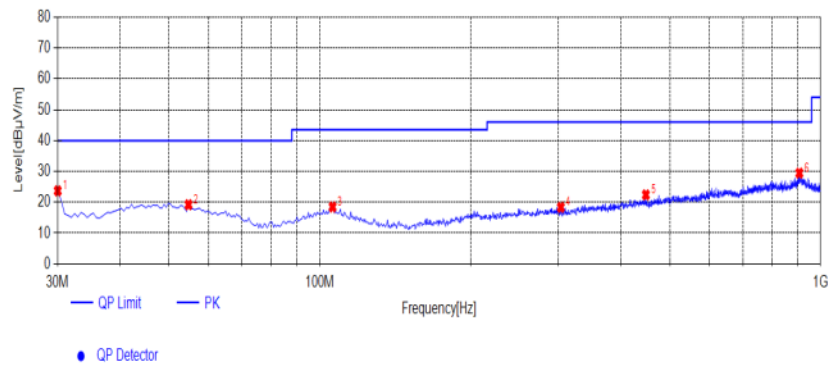
Distance extrapolation factor = $40 \log (\text{specific distance} / \text{test distance})$ (dB);

Limit line = specific limits (dBuV) + distance extrapolation factor.

For 30MHz to 1000MHz

Horizontal

Test Graph



Suspected List

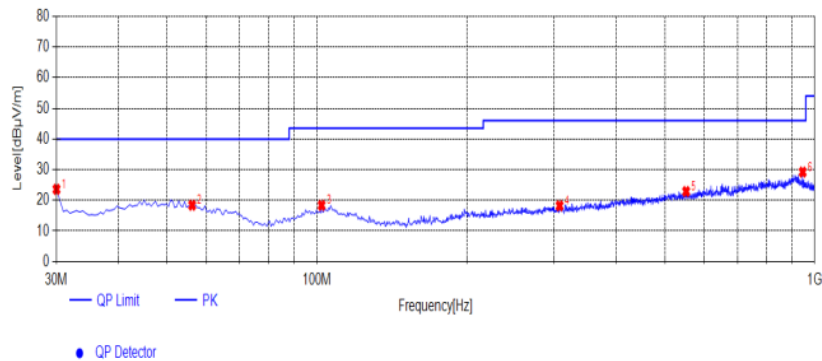
| NO. | Frequency [MHz] | Reading [dBμV/m] | Factor [dB] | Result [dBμV/m] | Limit [dBμV/m] | Margin [dB] | Height [cm] | Angle [°] | Detector | Polarity | Remark |
|-----|-----------------|------------------|-------------|-----------------|----------------|-------------|-------------|-----------|----------|------------|--------|
| 1 | 30.0000 | 33.46 | -9.76 | 23.70 | 40.00 | 16.30 | 100 | 265 | PK | Horizontal | PASS |
| 2 | 54.7350 | 26.56 | -7.35 | 19.21 | 40.00 | 20.79 | 100 | 265 | PK | Horizontal | PASS |
| 3 | 106.1450 | 26.41 | -7.93 | 18.48 | 43.50 | 25.02 | 100 | 268 | PK | Horizontal | PASS |
| 4 | 303.0550 | 25.72 | -7.36 | 18.36 | 46.00 | 27.64 | 100 | 120 | PK | Horizontal | PASS |
| 5 | 448.0700 | 26.93 | -4.53 | 22.40 | 46.00 | 23.60 | 100 | 246 | PK | Horizontal | PASS |
| 6 | 907.3650 | 26.13 | 3.31 | 29.44 | 46.00 | 16.56 | 100 | 31 | PK | Horizontal | PASS |

Note:1. Result (dBμV/m) = Reading(dBμV/m) + Factor (dB) .

2. Factor (dB) = Antenna Factor (dB/m) + Cable loss (dB) - Pre Amplifier gain (dB).

Vertical

Test Graph



Suspected List

| NO. | Frequency [MHz] | Reading [dBμV/m] | Factor [dB] | Result [dBμV/m] | Limit [dBμV/m] | Margin [dB] | Height [cm] | Angle [°] | Detector | Polarity | Remark |
|-----|-----------------|------------------|-------------|-----------------|----------------|-------------|-------------|-----------|----------|----------|--------|
| 1 | 30.0000 | 33.34 | -9.76 | 23.58 | 40.00 | 16.42 | 100 | 136 | PK | Vertical | PASS |
| 2 | 56.1900 | 25.69 | -7.30 | 18.39 | 40.00 | 21.61 | 100 | 243 | PK | Vertical | PASS |
| 3 | 102.2650 | 26.74 | -8.39 | 18.35 | 43.50 | 25.15 | 100 | 326 | PK | Vertical | PASS |
| 4 | 307.4200 | 25.43 | -7.22 | 18.21 | 46.00 | 27.79 | 100 | 329 | PK | Vertical | PASS |
| 5 | 551.8600 | 25.79 | -2.92 | 22.87 | 46.00 | 23.13 | 100 | 16 | PK | Vertical | PASS |
| 6 | 946.1650 | 27.14 | 2.07 | 29.21 | 46.00 | 16.79 | 100 | 120 | PK | Vertical | PASS |

Note:1. Result (dBμV/m) = Reading(dBμV/m) + Factor (dB) .

2. Factor (dB) = Antenna Factor (dB/m) + Cable loss (dB) - Pre Amplifier gain (dB).

For 1GHz to 25GHz

BT LE

Channel 0 / 2402 MHz

| Freq. MHz | Reading dBuV | Ant. Fac. dB/m | Pre. Fac. dB | Cab. Loss dB | Measured dBuV/m | Limit dBuV/m | Margin dB | Remark | Pol. |
|-----------|--------------|----------------|--------------|--------------|-----------------|--------------|-----------|---------|------------|
| 4804.00 | 50.48 | 32.44 | 30.25 | 7.95 | 60.62 | 74.00 | -13.38 | Peak | Horizontal |
| 4804.00 | 35.33 | 32.44 | 30.25 | 7.95 | 45.47 | 54.00 | -8.53 | Average | Horizontal |
| 4804.00 | 53.46 | 32.44 | 30.25 | 7.95 | 63.60 | 74.00 | -10.40 | Peak | Vertical |
| 4804.00 | 35.78 | 32.44 | 30.25 | 7.95 | 45.92 | 54.00 | -8.08 | Average | Vertical |

Channel 19 / 2440 MHz

| Freq. MHz | Reading dBuV | Ant. Fac. dB/m | Pre. Fac. dB | Cab. Loss dB | Measured dBuV/m | Limit dBuV/m | Margin dB | Remark | Pol. |
|-----------|--------------|----------------|--------------|--------------|-----------------|--------------|-----------|---------|------------|
| 4880.00 | 50.91 | 32.52 | 30.31 | 8.12 | 61.24 | 74.00 | -12.76 | Peak | Horizontal |
| 4880.00 | 37.44 | 32.52 | 30.31 | 8.12 | 47.77 | 54.00 | -6.23 | Average | Horizontal |
| 4880.00 | 51.34 | 32.52 | 30.31 | 8.12 | 61.67 | 74.00 | -12.33 | Peak | Vertical |
| 4880.00 | 36.90 | 32.52 | 30.31 | 8.12 | 47.23 | 54.00 | -6.77 | Average | Vertical |

Channel 39 / 2480 MHz

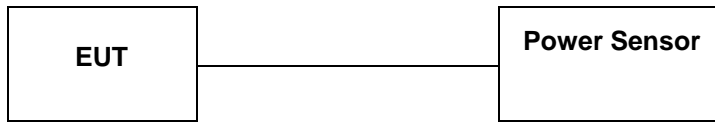
| Freq. MHz | Reading dBuV | Ant. Fac. dB/m | Pre. Fac. dB | Cab. Loss dB | Measured dBuV/m | Limit dBuV/m | Margin dB | Remark | Pol. |
|-----------|--------------|----------------|--------------|--------------|-----------------|--------------|-----------|---------|------------|
| 4960.00 | 51.36 | 32.68 | 30.27 | 7.88 | 61.65 | 74.00 | -12.35 | Peak | Horizontal |
| 4960.00 | 36.11 | 32.68 | 30.27 | 7.88 | 46.40 | 54.00 | -7.60 | Average | Horizontal |
| 4960.00 | 49.16 | 32.68 | 30.27 | 7.88 | 59.45 | 74.00 | -14.55 | Peak | Vertical |
| 4960.00 | 31.28 | 32.68 | 30.27 | 7.88 | 41.57 | 54.00 | -12.43 | Average | Vertical |

Notes:

- 1). Measuring frequencies from 9 KHz~10th harmonic or 26.5GHz (which is less), No emission found between lowest internal used/generated frequency to 30MHz.
- 2). Radiated emissions measured in frequency range from 9 KHz~10th harmonic or 26.5GHz (which is less) were made with an instrument using Peak detector mode.
- 3). Data of measurement within this frequency range shown " --- " in the table above means the reading of emissions are attenuated more than 20dB below the permissible limits or the field strength is too small to be measured.
- 4). Measured= Reading- Pre. Fac.+ Ant. Fac.+ Cab. Loss
- 5). Margin = Measured- Limit

4.3. Maximum Peak Output Power

TEST CONFIGURATION



TEST PROCEDURE

According to KDB 558074 D01 15.247 Measurement Guidance v05r02 Section 8.3.1 Maximum peak conducted output power, 8.3.1.3 The maximum peak conducted output power may be measured using a broadband peak RF power meter. The power meter shall have a video bandwidth that is greater than or equal to the DTS bandwidth and shall utilize a fast-responding diode detector.

LIMIT

The Maximum Peak Output Power Measurement is 30dBm.

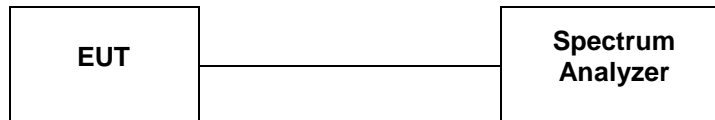
TEST RESULTS

For reporting purpose only.

Please refer to Appendix A.3.

4.4. Power Spectral Density

TEST CONFIGURATION



TEST PROCEDURE

1. Use this procedure when the maximum peak conducted output power in the fundamental emission is used to demonstrate compliance.
2. Set the RBW = 3 kHz.
3. Set the VBW = 10 KHz.
4. Set the span to 1.5 times the DTS channel bandwidth.
5. Detector = peak.
6. Sweep time = auto couple.
7. Trace mode = max hold.
8. Allow trace to fully stabilize.
9. Use the peak marker function to determine the maximum power level.
10. If measured value exceeds limit, reduce RBW (no less than 3 kHz) and repeat.
11. The resulting peak PSD level must be 8 dBm.

LIMIT

For digitally modulated systems, the power spectral density conducted from the intentional radiator to the antenna shall not be greater than 8 dBm in any 3 kHz band during any time interval of continuous transmission.

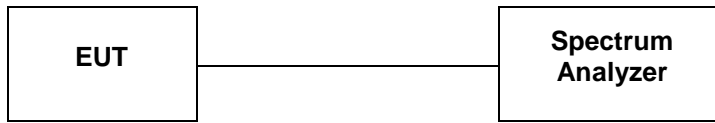
TEST RESULTS

For reporting purpose only.

Please refer to Appendix A.4.

4.5. 99% and 6dB Bandwidth

TEST CONFIGURATION



TEST PROCEDURE

The transmitter output was connected to the spectrum analyzer through an attenuator. The bandwidth of the fundamental frequency was measured by spectrum analyzer with RBW=100 KHz and VBW=300KHz. The 6dB bandwidth is defined as the total spectrum the power of which is higher than peak power minus 6dB. According to KDB 558074 D01 DTS Meas Guidance v05r02 for one of the following procedures may be used to determine the modulated DTS device signal bandwidth.

1. Set RBW = 100 kHz.
2. Set the video bandwidth (VBW) ≥ 3 RBW.
3. Detector = Peak.
4. Trace mode = max hold.
5. Sweep = auto couple.
6. Allow the trace to stabilize.
7. Measure the maximum width of the emission that is constrained by the frequencies associated with the two outermost amplitude points (upper and lower frequencies) that are attenuated by 6 dB relative to the maximum level measured in the fundamental emission.

LIMIT

For digital modulation systems, the minimum 6 dB bandwidth shall be at least 500 kHz

TEST RESULTS

For reporting purpose only.

Please refer to Appendix A.1.

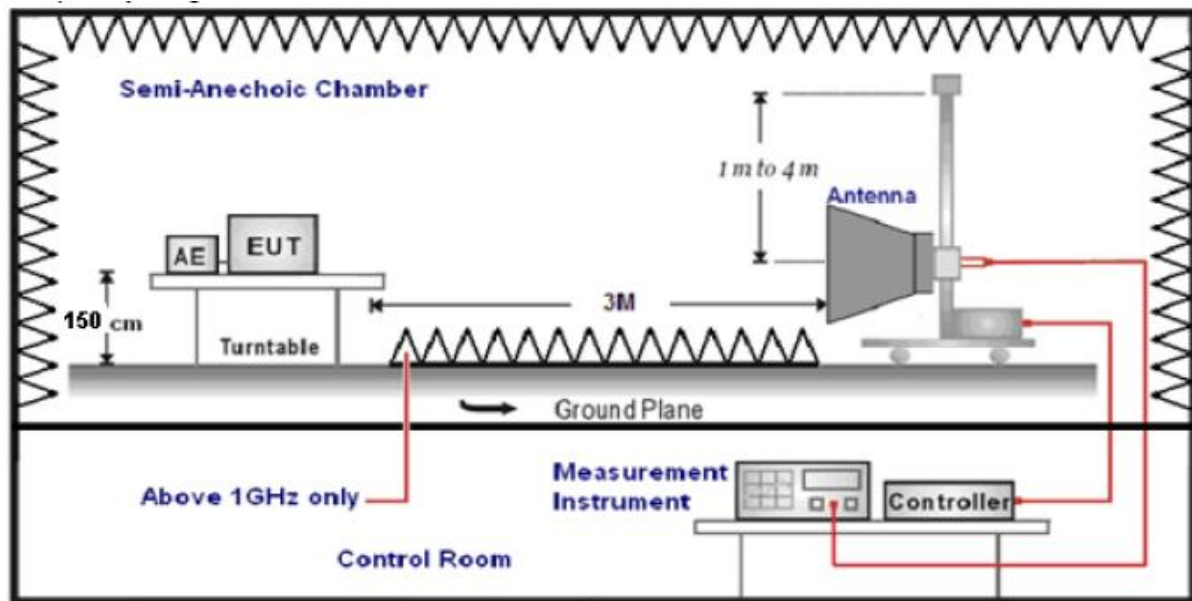
Please refer to Appendix A.2.

4.6. Conducted Spurious Emissions and Band Edge Compliance of RF Emission

TEST REQUIREMENT

In any 100 kHz bandwidth outside the frequency band in which the spread spectrum or digitally modulated intentional radiator is operating, the radio frequency power that is produced by the intentional radiator shall be at least 20 dB below that in the 100 kHz bandwidth within the band that contains the highest level of the desired power, based on either an RF conducted or a radiated measurement, provided the transmitter demonstrates compliance with the peak conducted power limits. If the transmitter complies with the conducted power limits based on the use of RMS averaging over a time interval, as permitted under paragraph (b)(3) of this section, the attenuation required under this paragraph shall be 30 dB instead of 20 dB. Attenuation below the general limits specified in §15.209(a) is not required. In addition, radiated emissions which fall in the restricted bands, as defined in §15.205(a), must also comply with the radiated emission limits specified in §15.209(a) (see §15.205(c)).

TEST CONFIGURATION



TEST PROCEDURE

1. The EUT was placed on a turn table which is 1.5m above ground plane.
2. Maximum procedure was performed by raising the receiving antenna from 1m to 4m and rotating the turn table from 0° to 360° to acquire the highest emissions from EUT.
3. And also, each emission was to be maximized by changing the polarization of receiving antenna both horizontal and vertical.
4. Repeat above procedures until all frequency measurements have been completed..
5. The distance between test antenna and EUT was 3 meter:
6. Setting test receiver/spectrum as following table states:

| Test Frequency range | Test Receiver/Spectrum Setting | Detector |
|----------------------|---|----------|
| 1GHz-40GHz | Peak Value: RBW=1MHz/VBW=3MHz, Sweep time=Auto Average Value: RBW=1MHz/VBW=10Hz, Sweep time=Auto | Peak |

LIMIT

Below -20dB of the highest emission level in operating band.

Radiated emissions which fall in the restricted bands, as defined in § 15.205(a), must also comply with the radiated emission limits specified in § 15.209(a)

TEST RESULTS**4.6.1 For Radiated Bandedge Measurement**

| | | | |
|---------------|------------|----------------|-------|
| Temperature | 23.8°C | Humidity | 53.7% |
| Test Engineer | Jenny Zeng | Configurations | BT |

| Frequency(MHz): | | | 2402 | | | Polarity: | | | HORIZONTAL | | |
|-----------------|-------------------------|----|----------------|-------------|--------------------|----------------------|------------------|-----------------------|-------------------|---------------|--------------------------|
| Frequency (MHz) | Emission Level (dBuV/m) | | Limit (dBuV/m) | Margin (dB) | Antenna Height (m) | Table Angle (Degree) | Raw Value (dBuV) | Antenna Factor (dB/m) | Cable Factor (dB) | Pre-amplifier | Correction Factor (dB/m) |
| 2390.00 | 46.47 | PK | 74.00 | -27.53 | 1.50 | 80 | 51.78 | 27.49 | 3.32 | 36.12 | -5.31 |
| 2390.00 | 35.40 | AV | 54.00 | -18.60 | 1.50 | 80 | 40.71 | 27.49 | 3.32 | 36.12 | -5.31 |
| Frequency(MHz): | | | 2402 | | | Polarity: | | | VERTICAL | | |
| Frequency (MHz) | Emission Level (dBuV/m) | | Limit (dBuV/m) | Margin (dB) | Antenna Height (m) | Table Angle (Degree) | Raw Value (dBuV) | Antenna Factor (dB/m) | Cable Factor (dB) | Pre-amplifier | Correction Factor (dB/m) |
| 2390.00 | 49.48 | PK | 74.00 | -24.52 | 1.50 | 257 | 54.79 | 27.49 | 3.32 | 36.12 | -5.31 |
| 2390.00 | 29.83 | AV | 54.00 | -24.17 | 1.50 | 257 | 35.14 | 27.49 | 3.32 | 36.12 | -5.31 |
| Frequency(MHz): | | | 2480 | | | Polarity: | | | HORIZONTAL | | |
| Frequency (MHz) | Emission Level (dBuV/m) | | Limit (dBuV/m) | Margin (dB) | Antenna Height (m) | Table Angle (Degree) | Raw Value (dBuV) | Antenna Factor (dB/m) | Cable Factor (dB) | Pre-amplifier | Correction Factor (dB/m) |
| 2483.50 | 46.08 | PK | 74.00 | -27.92 | 1.50 | 165 | 51.80 | 27.45 | 3.38 | 36.55 | -5.72 |
| 2483.50 | 33.22 | AV | 54.00 | -20.78 | 1.50 | 165 | 38.94 | 27.45 | 3.38 | 36.55 | -5.72 |
| Frequency(MHz): | | | 2480 | | | Polarity: | | | VERTICAL | | |
| Frequency (MHz) | Emission Level (dBuV/m) | | Limit (dBuV/m) | Margin (dB) | Antenna Height (m) | Table Angle (Degree) | Raw Value (dBuV) | Antenna Factor (dB/m) | Cable Factor (dB) | Pre-amplifier | Correction Factor (dB/m) |
| 2483.50 | 49.00 | PK | 74.00 | -25.00 | 1.50 | 116 | 54.72 | 27.45 | 3.38 | 36.55 | -5.72 |
| 2483.50 | 30.35 | AV | 54.00 | -23.65 | 1.50 | 116 | 36.07 | 27.45 | 3.38 | 36.55 | -5.72 |

REMARKS:

1. Emission level (dBuV/m) =Raw Value (dBuV)+Correction Factor (dB/m)
2. Correction Factor (dB/m) = Antenna Factor (dB/m)+Cable Factor (dB)-Pre-amplifier Factor
3. Margin value = Limit value- Emission level.
4. -- Mean the PK detector measured value is below average limit.
5. The other emission levels were very low against the limit.

4.6.2 For Conducted Bandedge Measurement

For reporting purpose only.

Please refer to Appendix A.5.

4.6.3 For Conducted Spurious Emissions Measurement

For reporting purpose only.

Please refer to Appendix A.6.

4.7. Antenna Requirement

Standard Applicable

For intentional device, according to FCC 47 CFR Section 15.203, an intentional radiator shall be designed to ensure that no antenna other than that furnished by the responsible party shall be used with the device.

And according to FCC 47 CFR Section 15.247 (c), if transmitting antennas of directional gain greater than 6dBi are used, the power shall be reduced by the amount in dB that the directional gain of the antenna exceeds 6dBi.

Test Result

The antenna used for this product is Internal Antenna and that no antenna other than that furnished by the responsible party shall be used with the device, the maximum peak gain of the transmit antenna is only -1.00dBi.

Reference to the **Internal photos**.

5. TEST SETUP PHOTOS OF THE EUT

Photo of Radiated Emissions Measurement

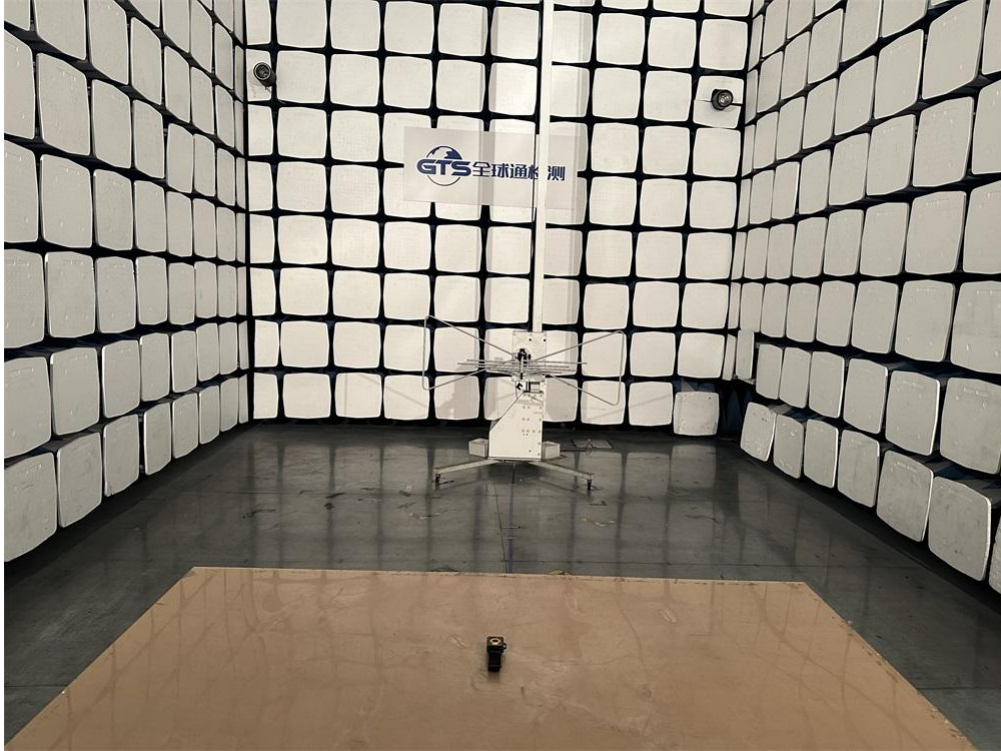


Fig. 1



Fig. 2

6. EXTERNAL AND INTERNAL PHOTOS OF THE EUT



Fig. 1



Fig. 2



Fig. 3



Fig. 4



Fig. 5



Fig. 6

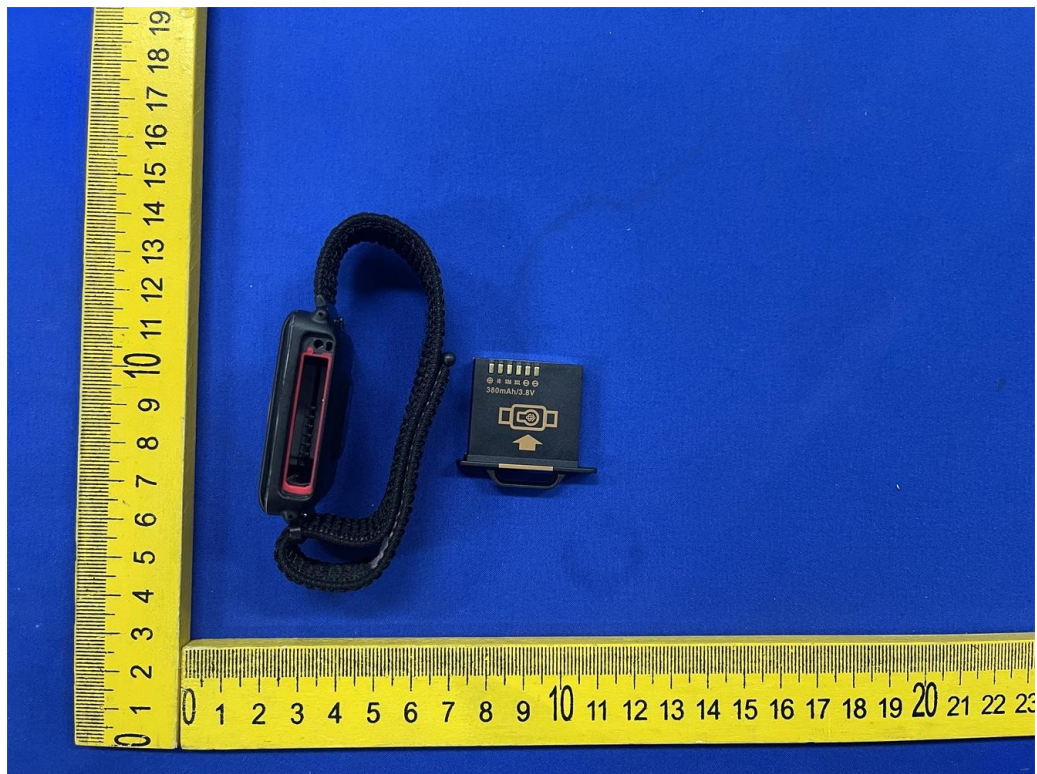


Fig. 7



Fig. 8



Fig. 9

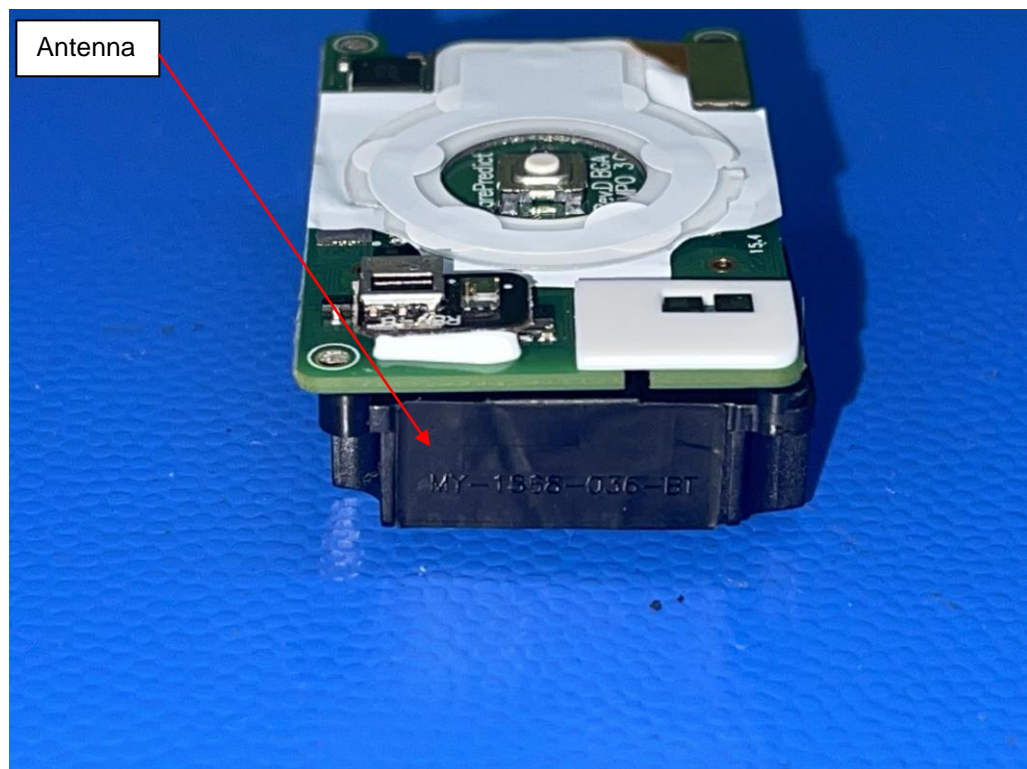


Fig. 10

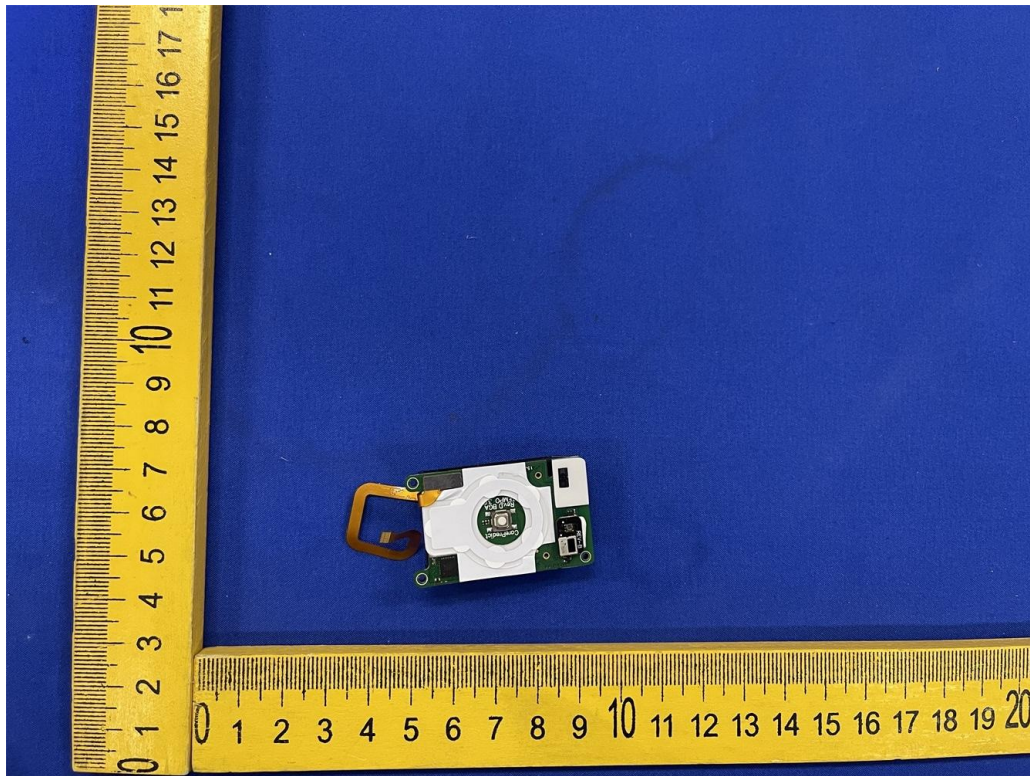


Fig. 11

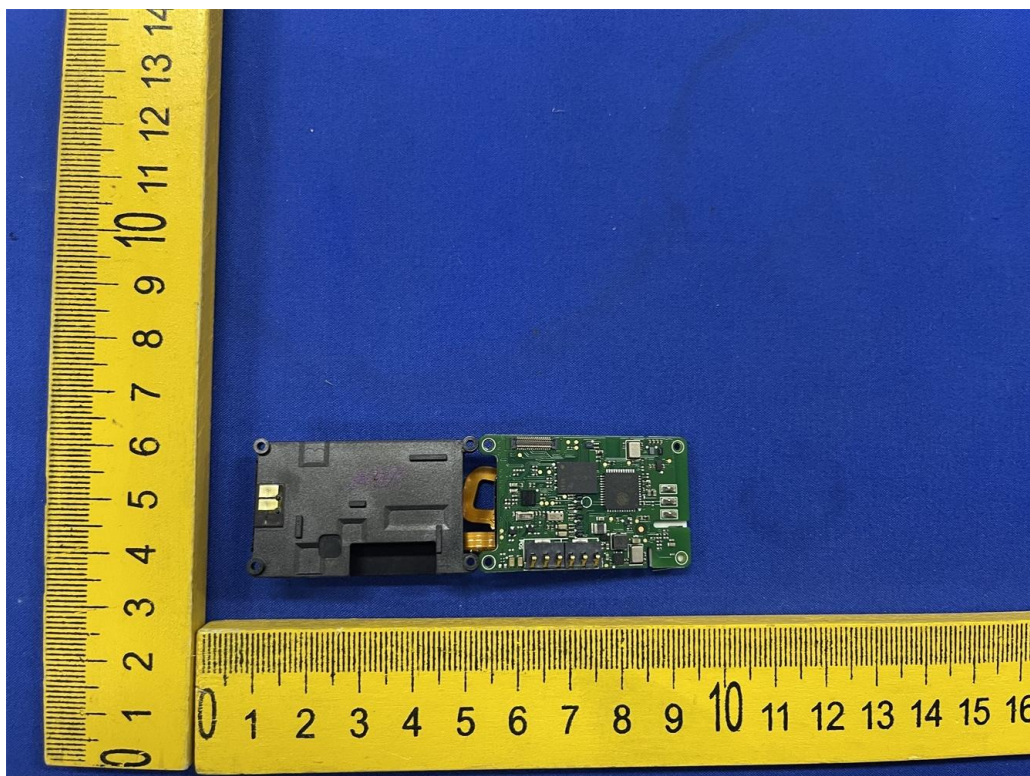


Fig. 12



Fig. 13

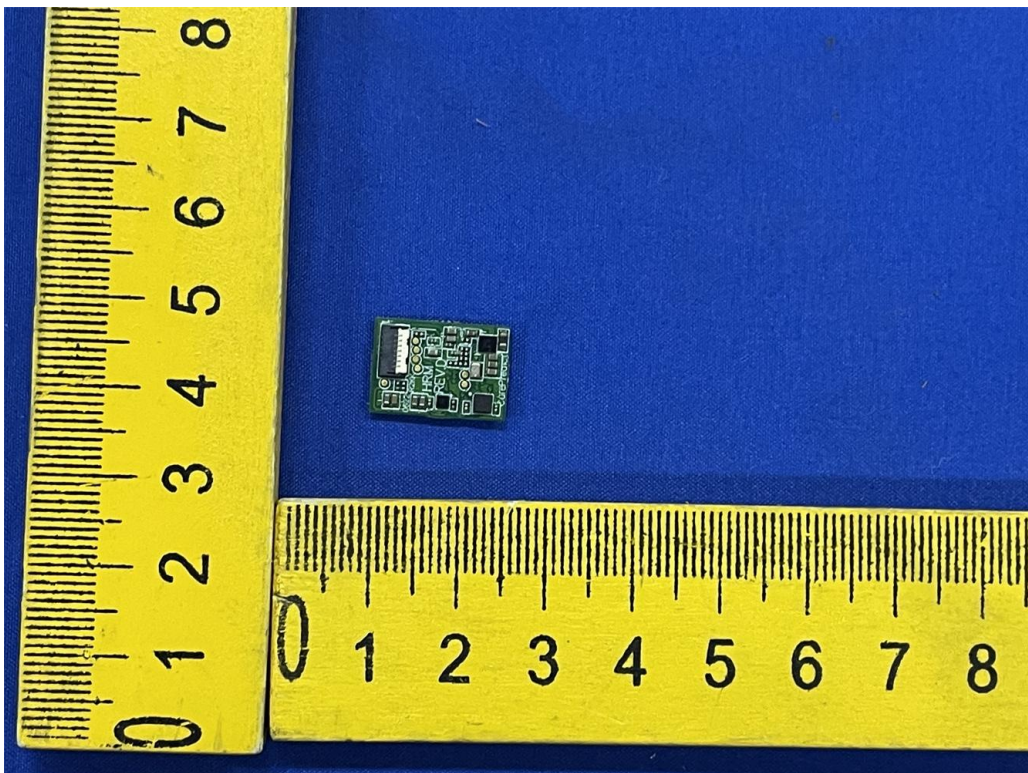


Fig. 14

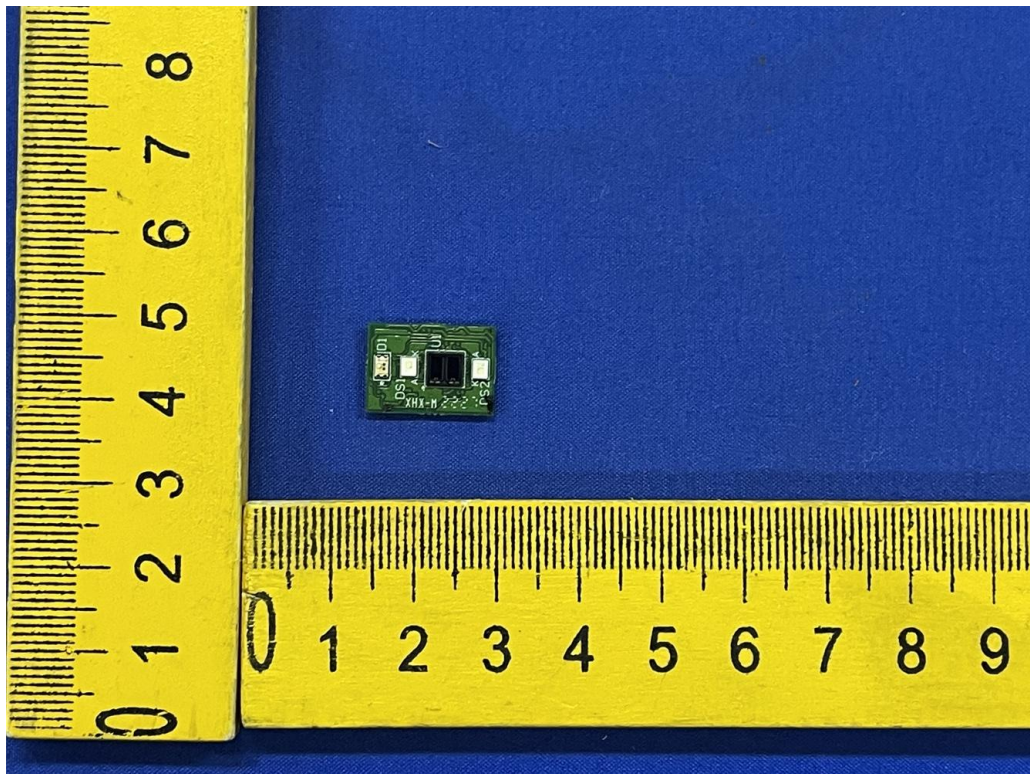


Fig. 15

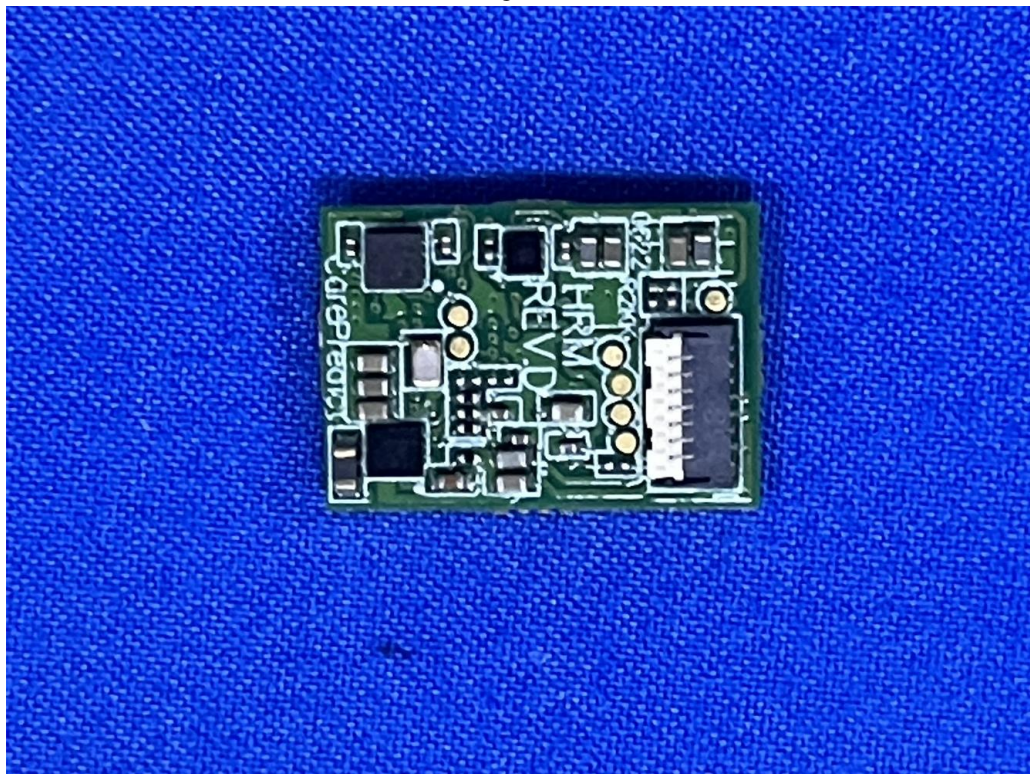


Fig. 16

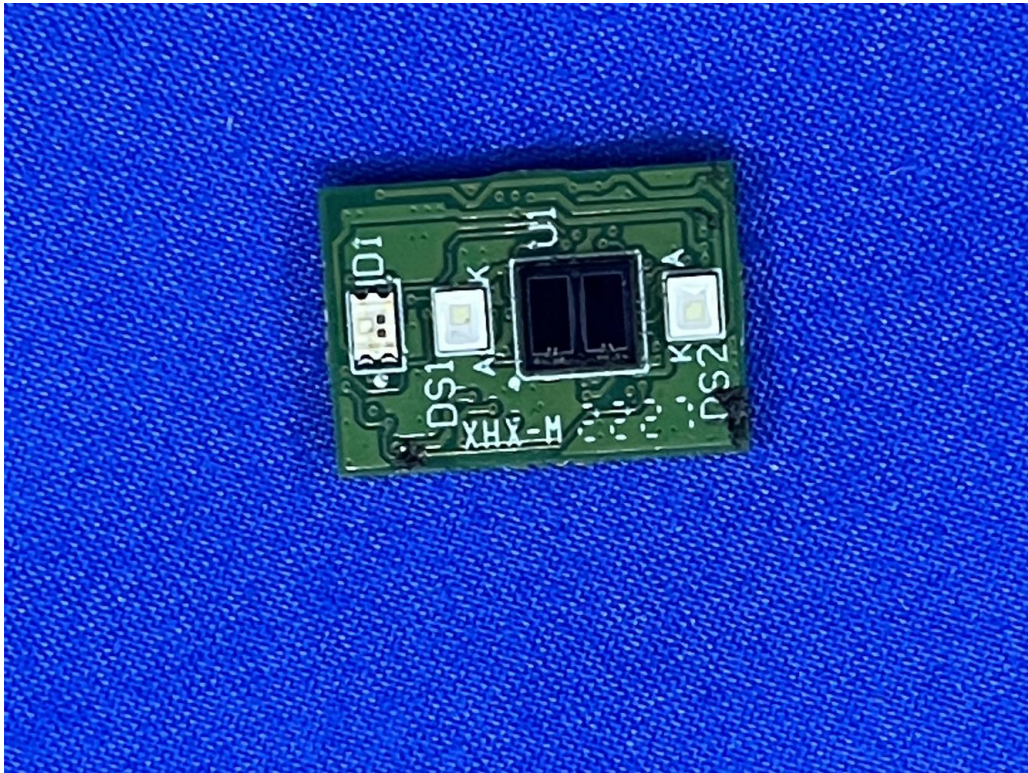


Fig. 17

.....End of Report.....