

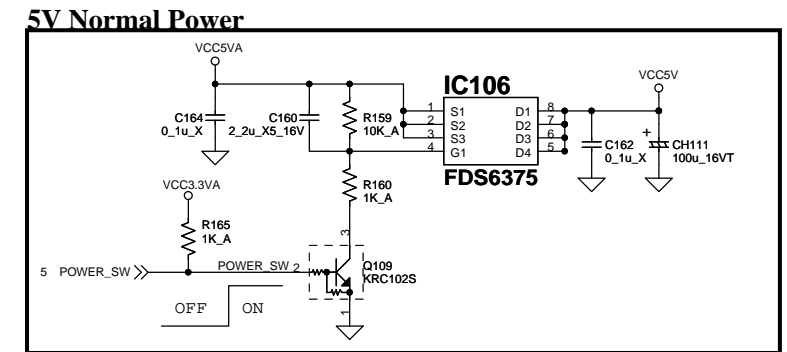
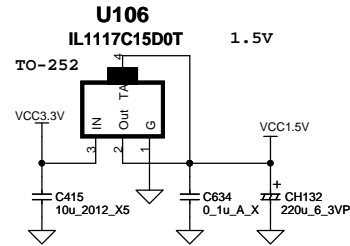
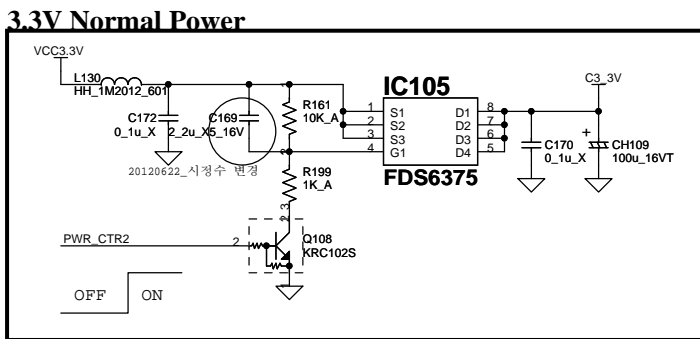
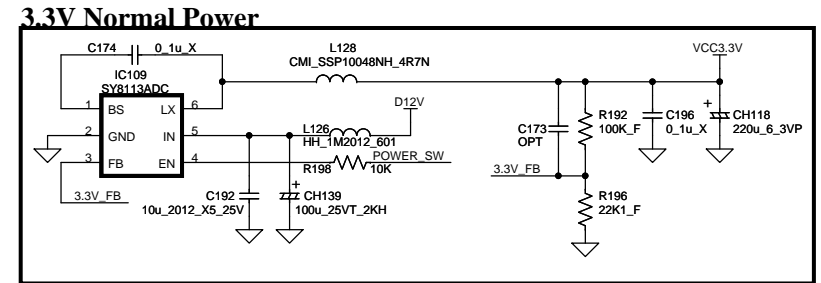
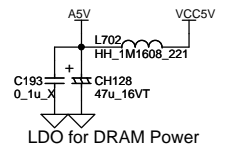
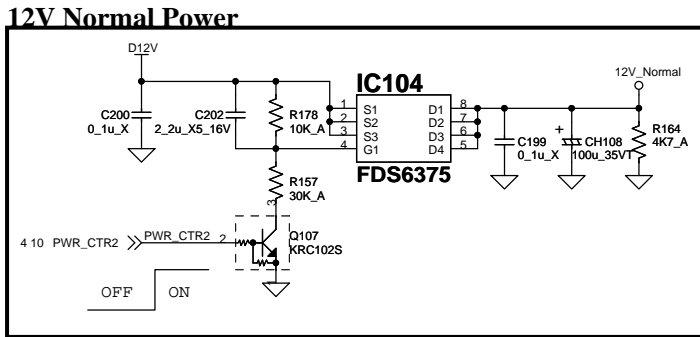
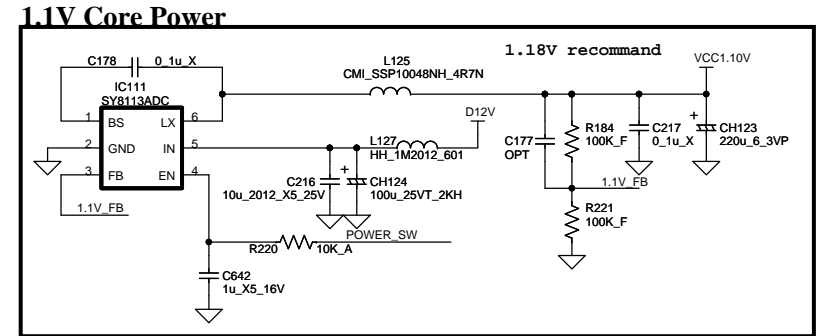
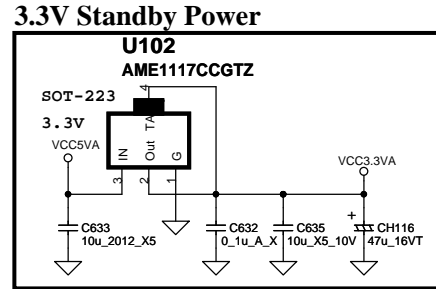
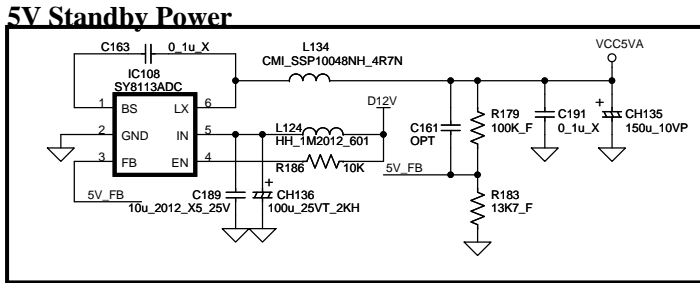
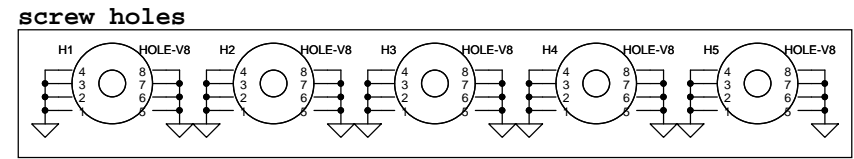
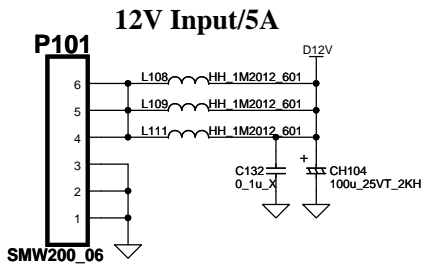
Sheet Index

- 01.Title Sheet
- 02.System Power
- 03.HDMI in/AUDIO/MTI/Expender
- 04.EXT/TS/NAND/AV
- 05.GPIO/LVDS/Expender/Front
- 06.MSD POWER/GND
- 07.MIU/DDR
- 08.HDMI Interface & CCI
- 09.Audio AMP & Headphone
- 10.PANEL INTERFACE & Tuner
- 11.Pro idiom
- 12.Bluetooth

Revision History

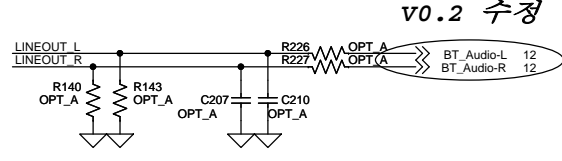
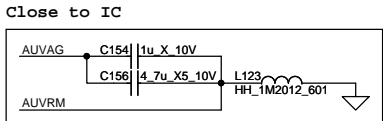
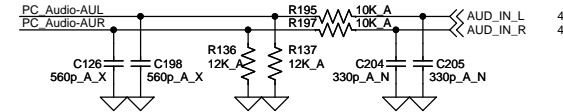
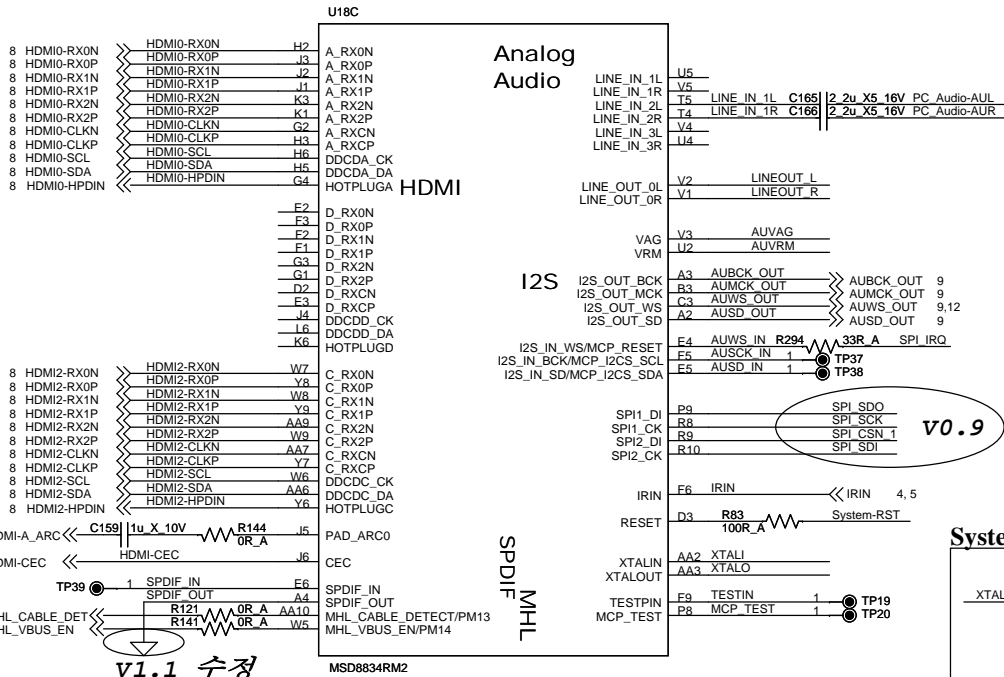
<u>Revision</u>	<u>Description</u>	<u>P. Mgr.</u>	<u>Date</u>
A	Initial Release		
V1.0	Change C189,192,216 : 0.1,1005,50V --> 10uF,2012,25V		17.02.14
	Change R831,832,836,837 : 330hm --> 100ohm		17.02.14
	Change ZD614 : CDS3C30GTH --> CDS3C05HDMI1		17.02.14
V1.1	Change ZD803,804,806,807 : CDS3C30GTH --> JDZS5.6B		17.02.24
	Add C218,219 : 1uF , Add C516 : 0.1uF		17.02.24
	U18 Pin A4 : short to GND		17.02.24
	Add L25 : HH-1M1608-221 , C98 : 0.1uF, C99 : 10uF		17.02.24

Title			
P14 MSD8834			
Size A	Document Number Title Sheet		Rev V1.1
Date:	Friday, February 24, 2017	Sheet	1 of 12

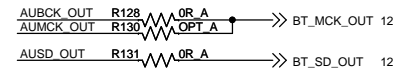
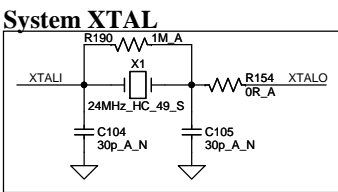


본 자료는 (주)HWH의 자료로서
(주)HWH의 동의없이 제3자에게
배포될 경우 법적책임은 배포자가 집니다.

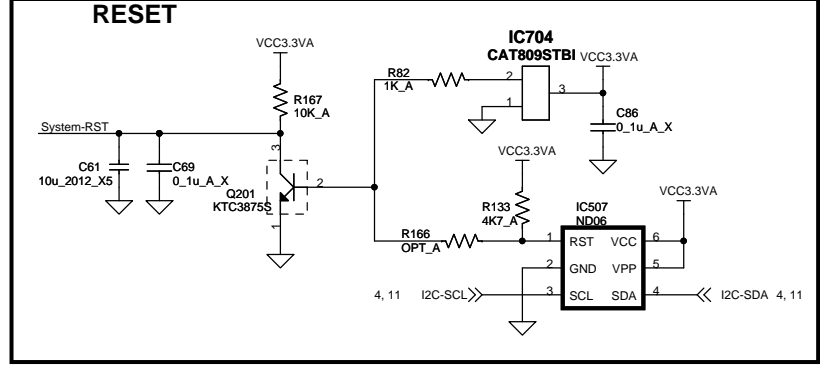
Title		P14_MSD8834	
Size	Document Number	System Power	
A3			Rev V1.1
Date:	Friday, February 24, 2017	Sheet	2 of 12



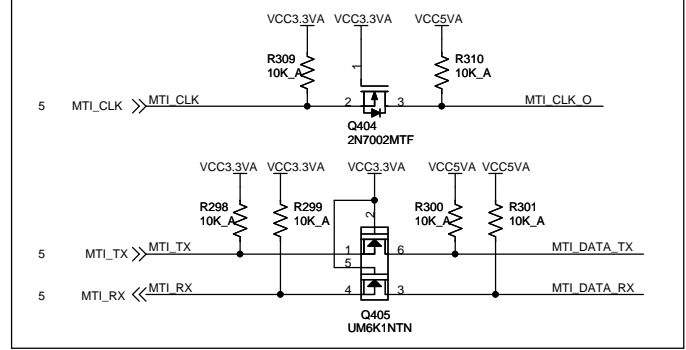
v0.9 수정



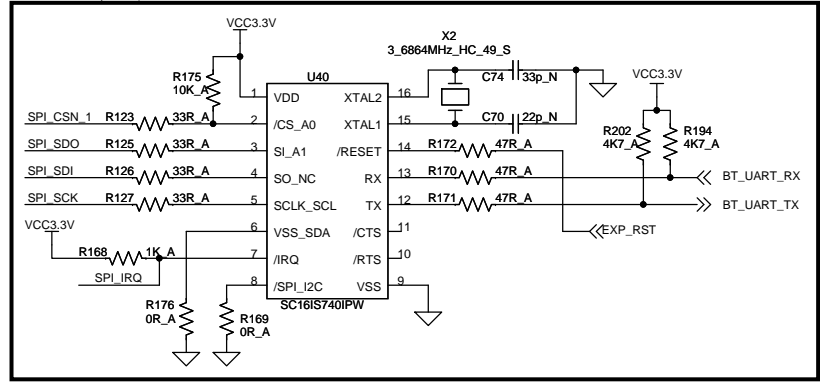
v0.2 수정



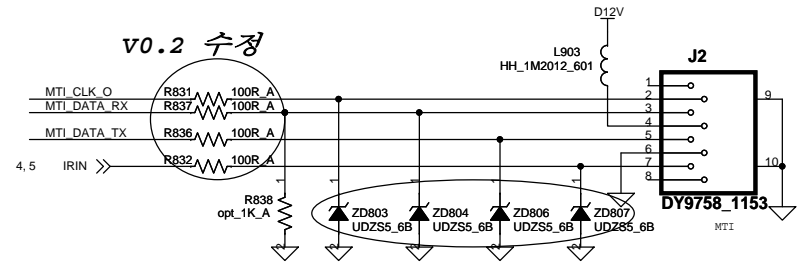
v0.2 추가



v0.2 추가



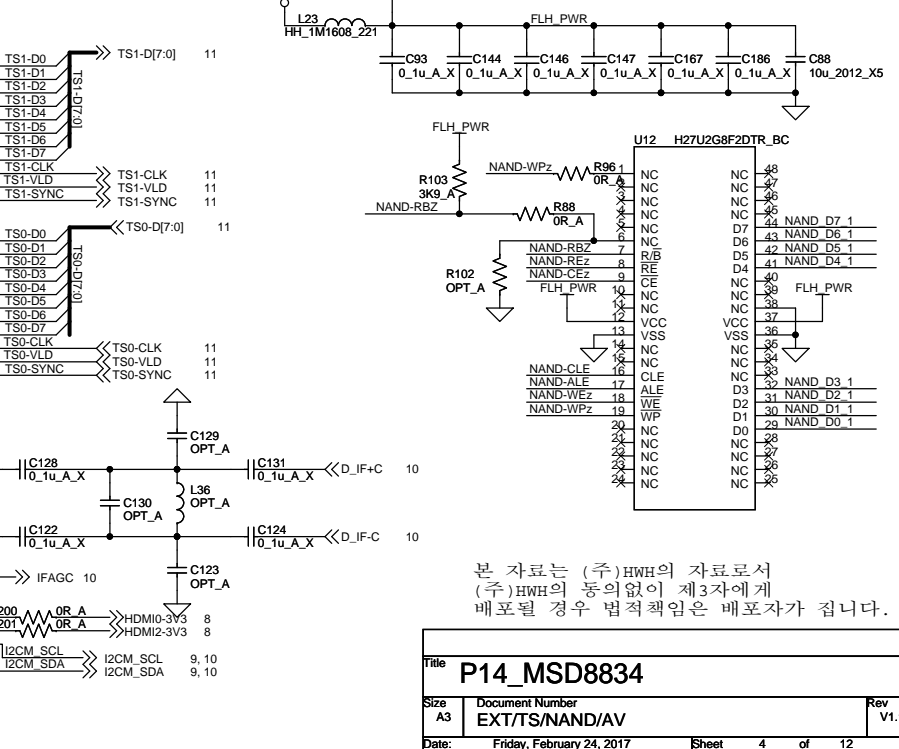
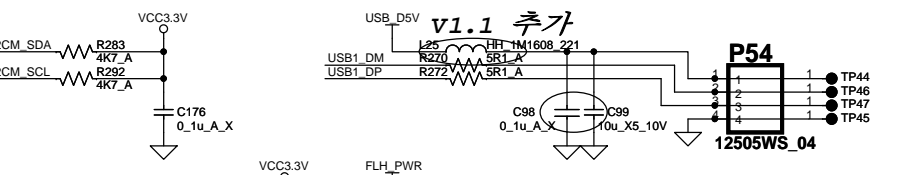
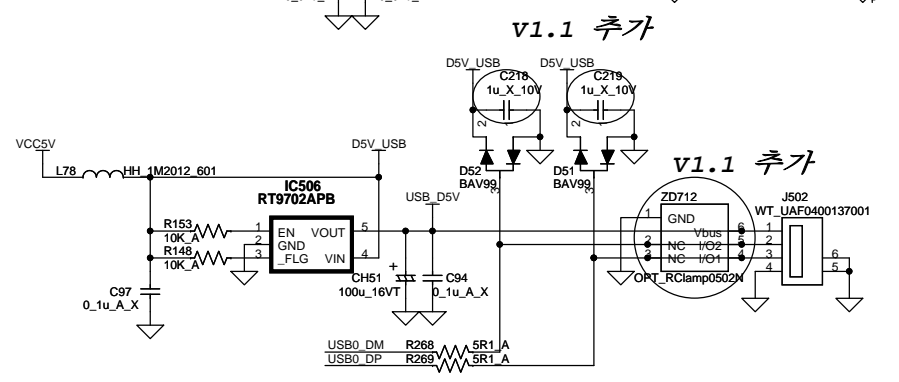
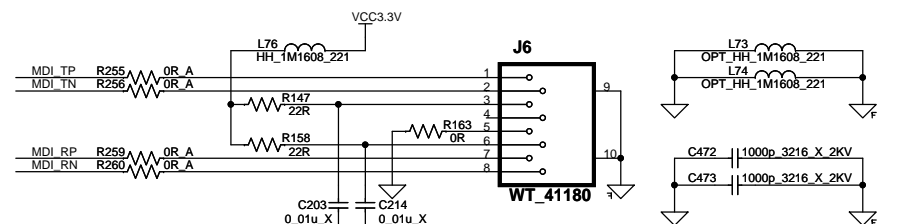
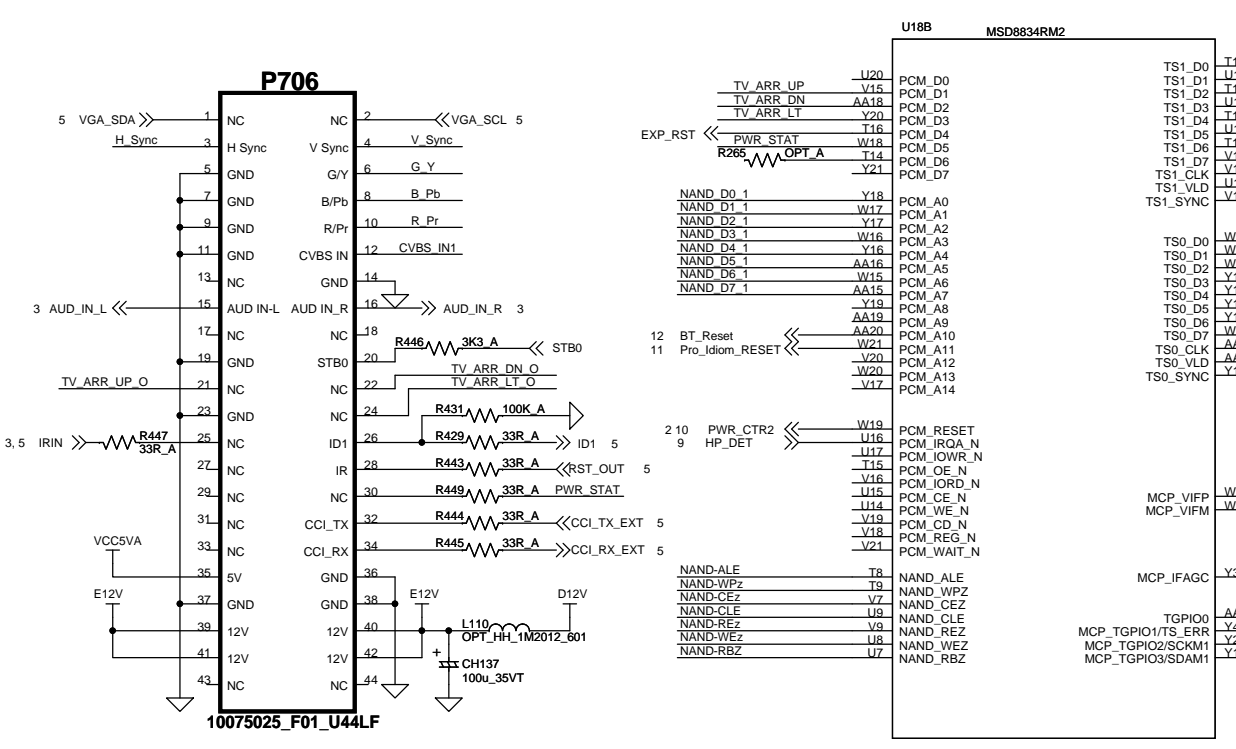
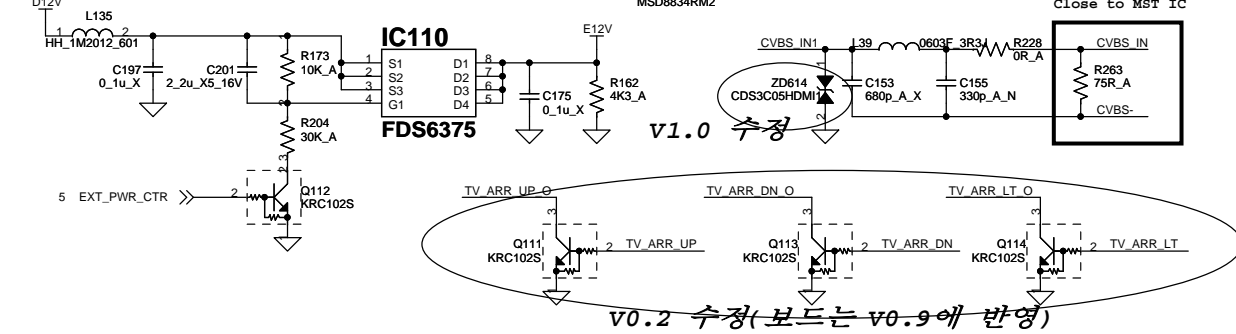
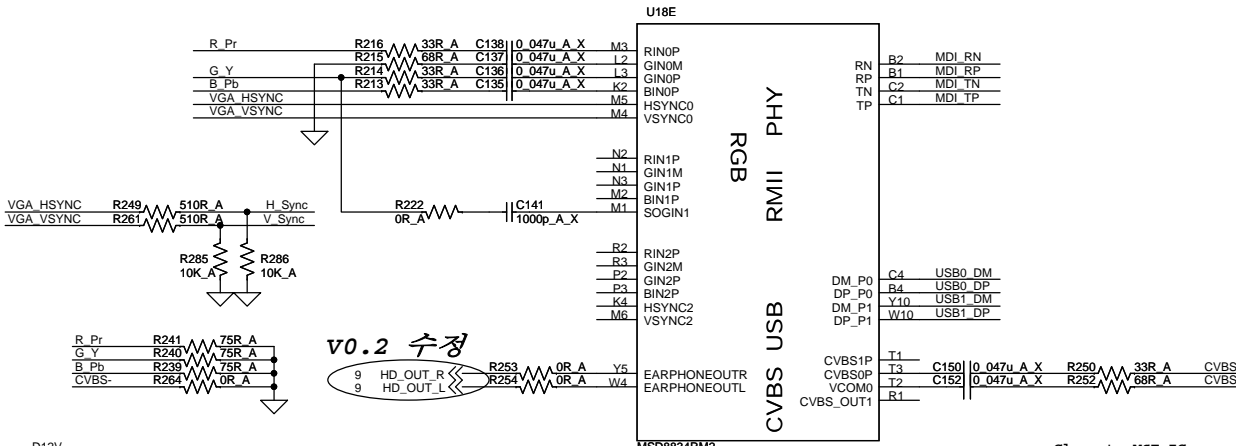
v0.2 수정



v1.1 변경

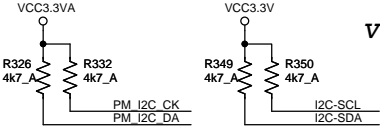
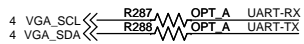
본 자료는 (주)HWH의 자료로서
(주)HWH의 동의없이 제3자에게
배포될 경우 법적책임은 배포자가 집니다.

Title		P14_MSD8834	
Size	A3	Document Number	HDMI in/AUDIO/MTI
Date:	Friday, March 17, 2017	Rev	V1.1
Sheet		3 of 12	

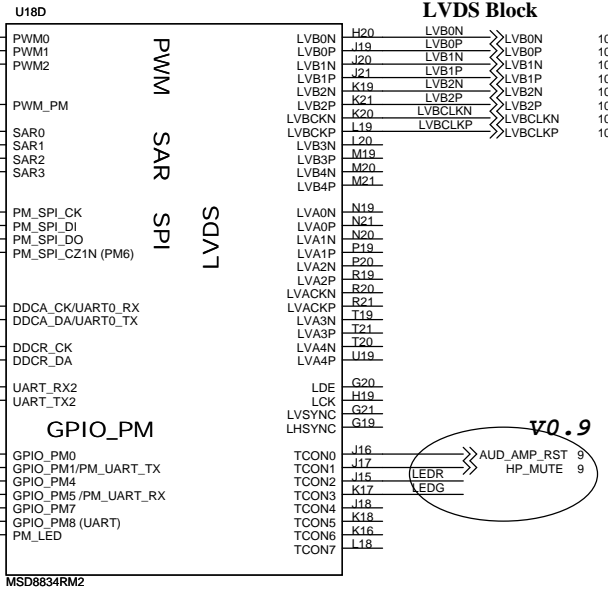
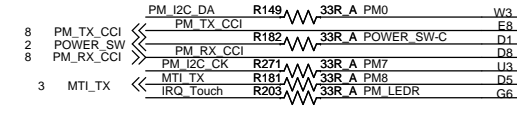
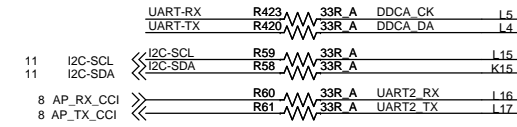


본 자료는 (주)HHW의 자료로서
(주)HHW의 동의없이 제3자에게
배포될 경우 법적책임은 배포자가 집니다.

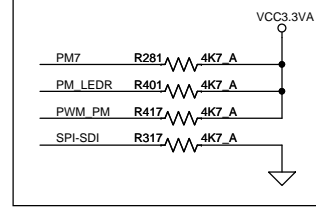
Title		P14_MSD8834	
Size	A3	Document Number	EXT/TS/NAND/AV
Date:	Friday, February 24, 2017	Sheet	4 of 12
Rev	V1.1		



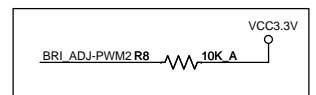
v0.9 수정



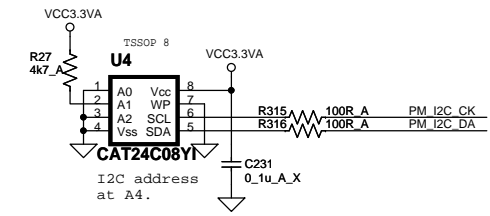
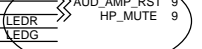
IC Configuration Selection



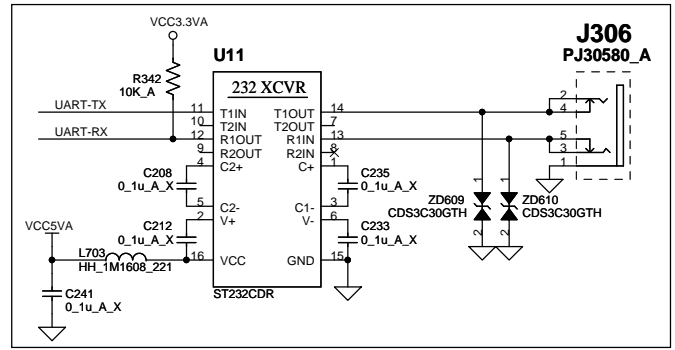
PULL_UP



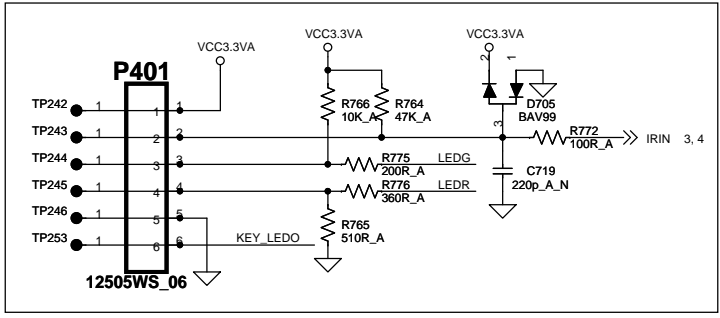
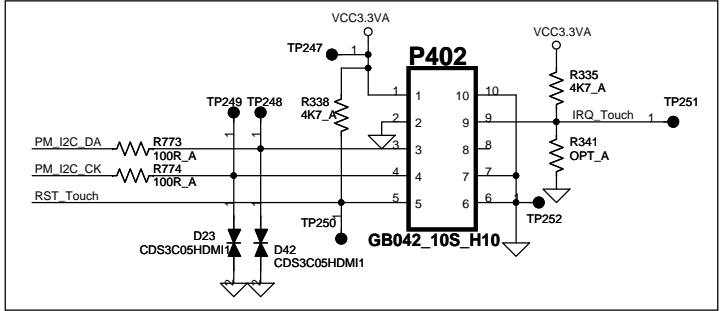
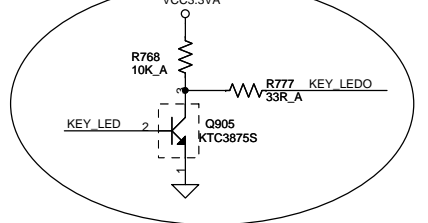
v0.9 수정



Debug port

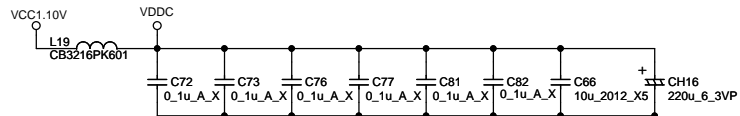


v0.9 추가

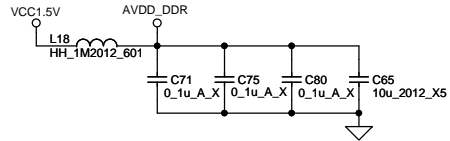


본 자료는 (주)HWH의 자료로서 (주)HWH의 동의없이 제3자에게 배포될 경우 법적책임은 배포자가 집니다.

Title	P14_MSD8834	
Size	Document Number	Rev
A3	GPIO/LVDS/Expende/Front	V1.1
Date:	Friday, February 24, 2017	Sheet 5 of 12

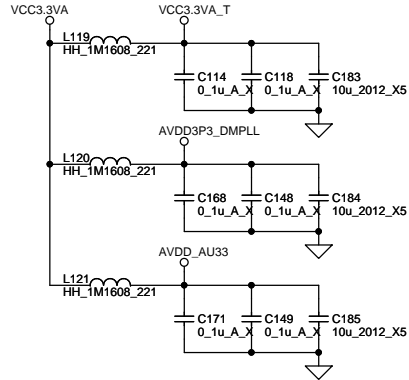


DDR3 POWER

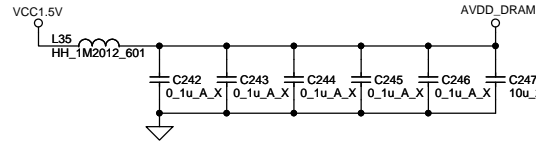
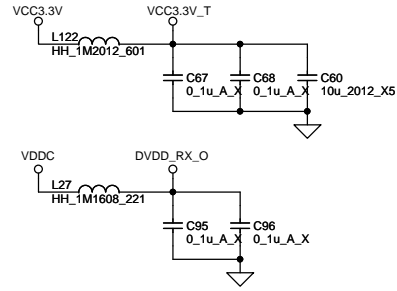


CH19 삭제 V0.2

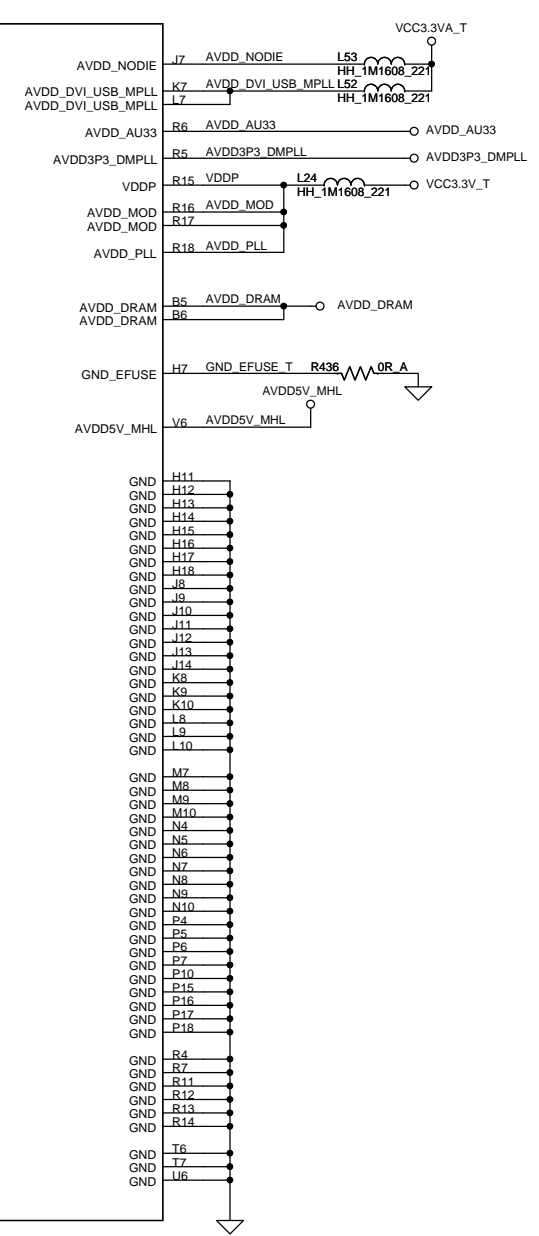
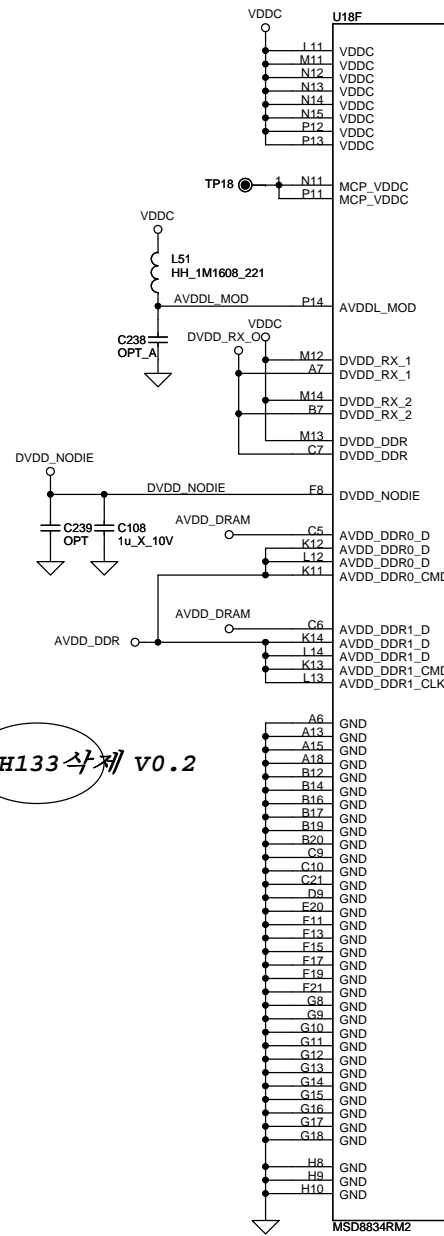
Standby Power 3.3V



Normal Power 3.3V

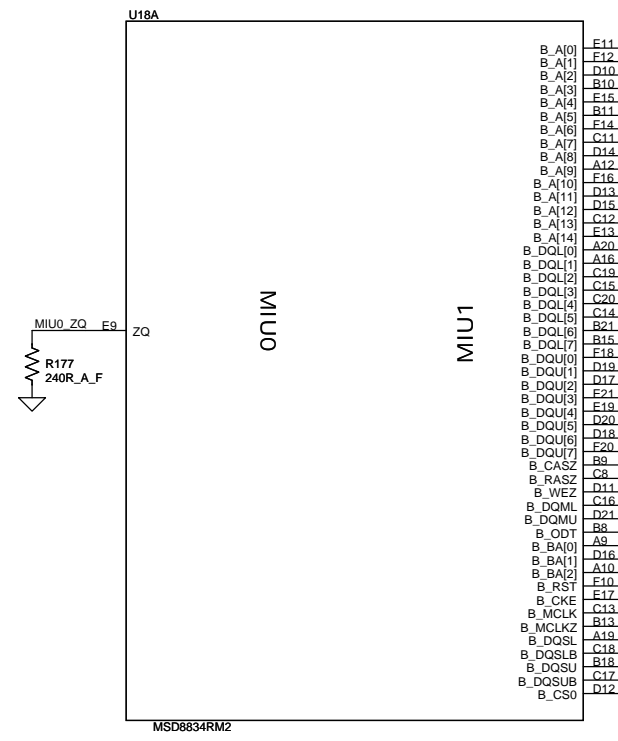


CH133 삭제 V0.2



본 자료는 (주)HWH의 자료로서
(주)HWH의 동의없이 제3자에게
배포될 경우 법적책임은 배포자가 집니다.

Title		
P14 MSD8834		
Size	Document Number	Rev
A3	MSD POWER/GND	V1.1
Date:	Friday, February 24, 2017	Sheet 6 of 12

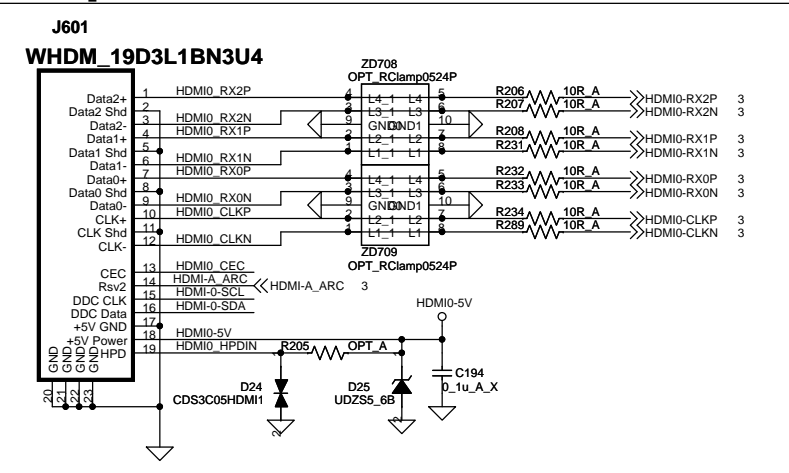


- B_A[0] E11
- B_A[1] F12
- B_A[2] D10
- B_A[3] B10
- B_A[4] F15
- B_A[5] B11
- B_A[6] F14
- B_A[7] C11
- B_A[8] D14
- B_A[9] A12
- B_A[10] F16
- B_A[11] D13
- B_A[12] D15
- B_A[13] C12
- B_A[14] E13
- B_DQL[0] A20
- B_DQL[1] A16
- B_DQL[2] C19
- B_DQL[3] C15
- B_DQL[4] C20
- B_DQL[5] C14
- B_DQL[6] B21
- B_DQL[7] B15
- B_DQU[0] F18
- B_DQU[1] D19
- B_DQU[2] D17
- B_DQU[3] E21
- B_DQU[4] E19
- B_DQU[5] D20
- B_DQU[6] D18
- B_DQU[7] F20
- B_CASZ B0
- B_RASZ C8
- B_WEZ D11
- B_DQML C16
- B_DQMU D21
- B_ODT B8
- B_BA[0] A9
- B_BA[1] D16
- B_BA[2] A10
- B_RST F10
- B_CKE F17
- B_MCLK C13
- B_MCLKZ B13
- B_DQSL A19
- B_DQSLB C18
- B_DQSU B18
- B_DQSUB C17
- B_CS0 D12

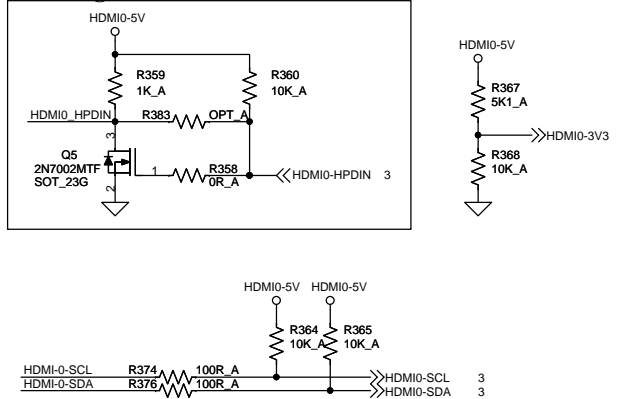
본 자료는 (주)HWH의 자료로서
 (주)HWH의 동의없이 제3자에게
 배포될 경우 법적책임은 배포자가 집니다.

Title		
P14 MSD8834		
Size	Document Number	Rev
A3	MIU/DDR	V1.1
Date:	Friday, February 24, 2017	Sheet 7 of 12

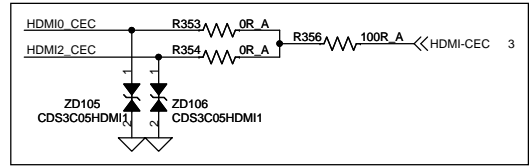
HDMI port 0/A



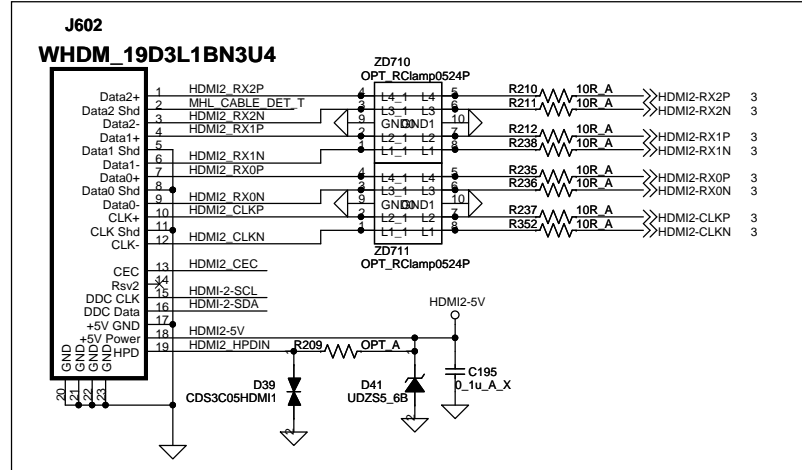
Hot-Plug 0 Control



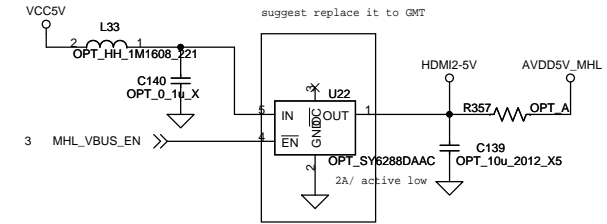
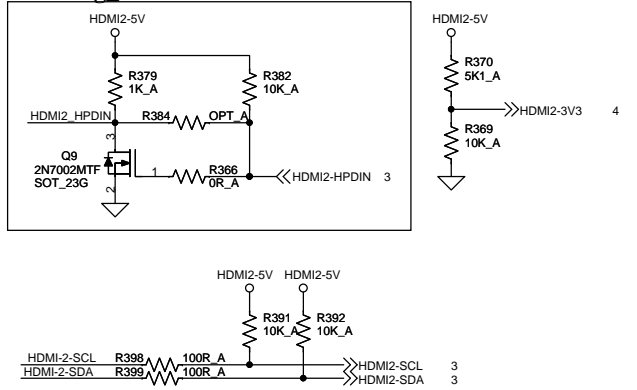
CEC



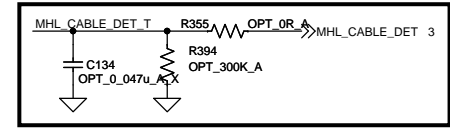
HDMI port 2/C



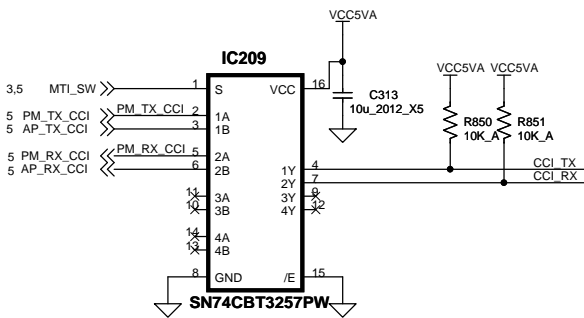
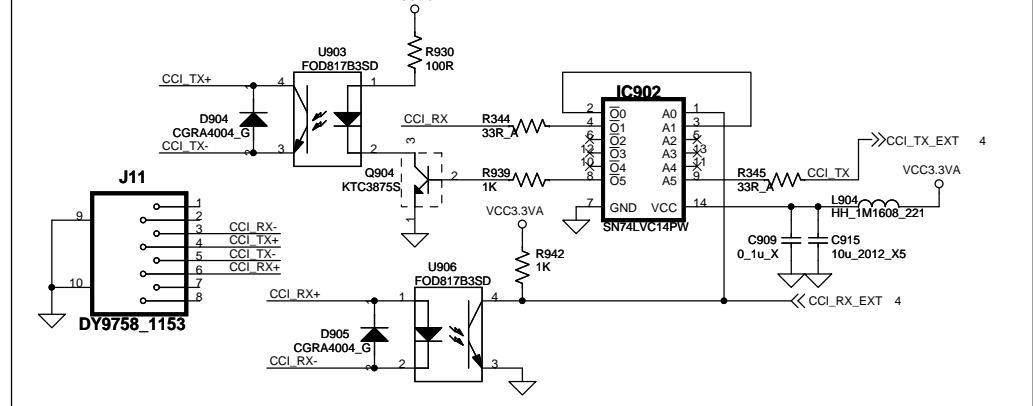
Hot-Plug 3 Control



MHL



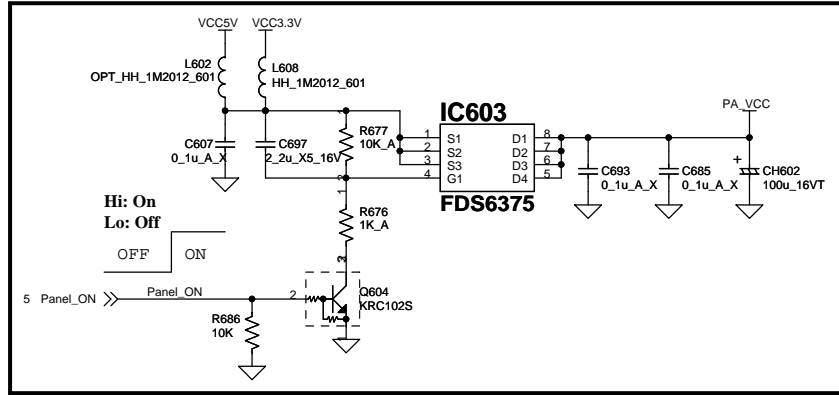
PM_UART



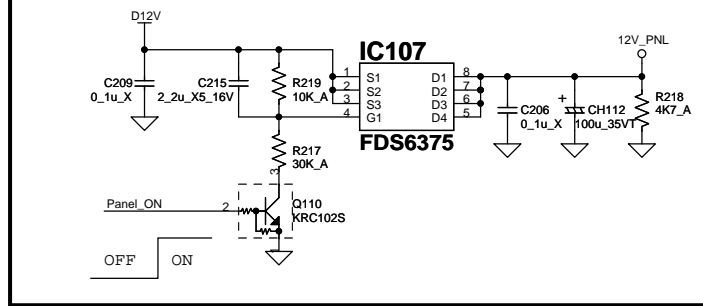
본 자료는 (주)HWH의 자료로서
(주)HWH의 동의없이 제3자에게
배포될 경우 법적책임은 배포자가 집니다.

Title			P14_MSD8834
Size	Document Number		HDMI Interface & CCI
A3			Rev V1.1
Date:	Friday, February 24, 2017	Sheet	8 of 12

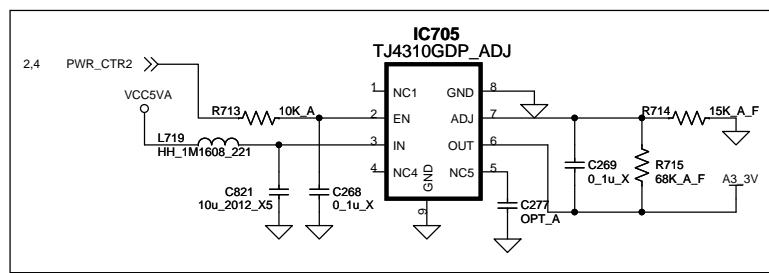
Panel Power



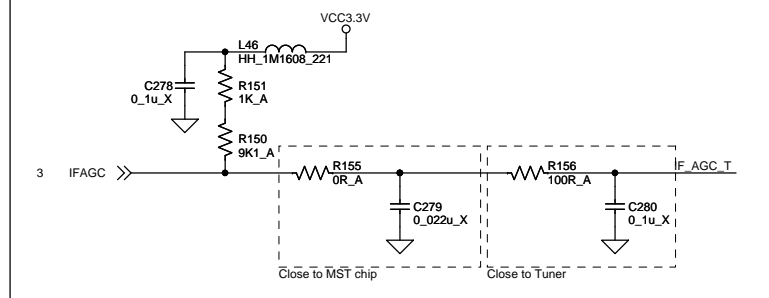
12V Panel Power



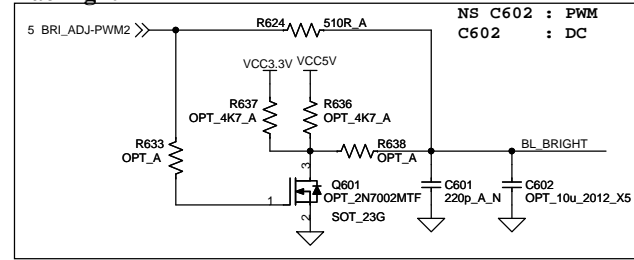
Tuner Power



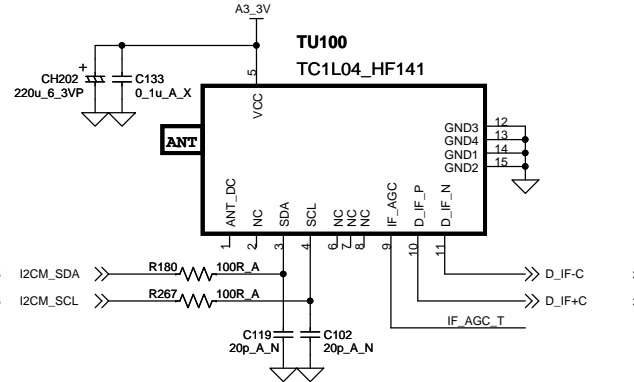
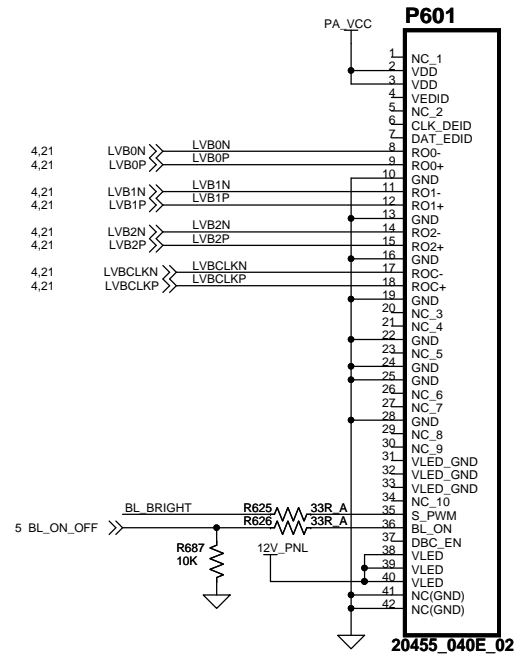
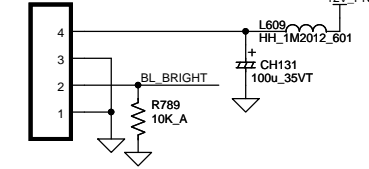
AGC CIRCUIT



Backlight

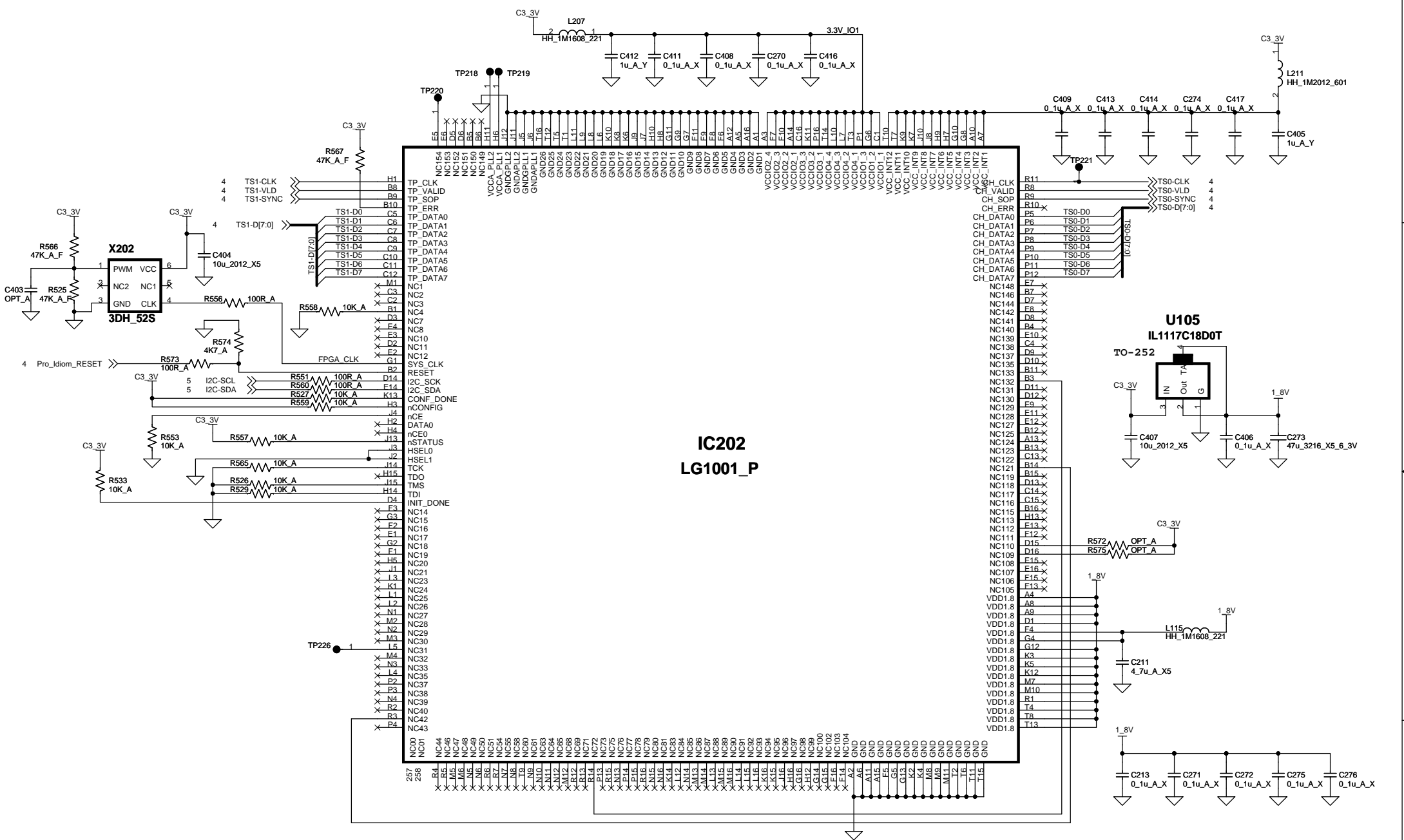


**P802
53014_0410**



본 자료는 (주)HHW의 자료로서
(주)HHW의 동의없이 제3자에게
배포될 경우 법적책임은 배포자가 집니다.

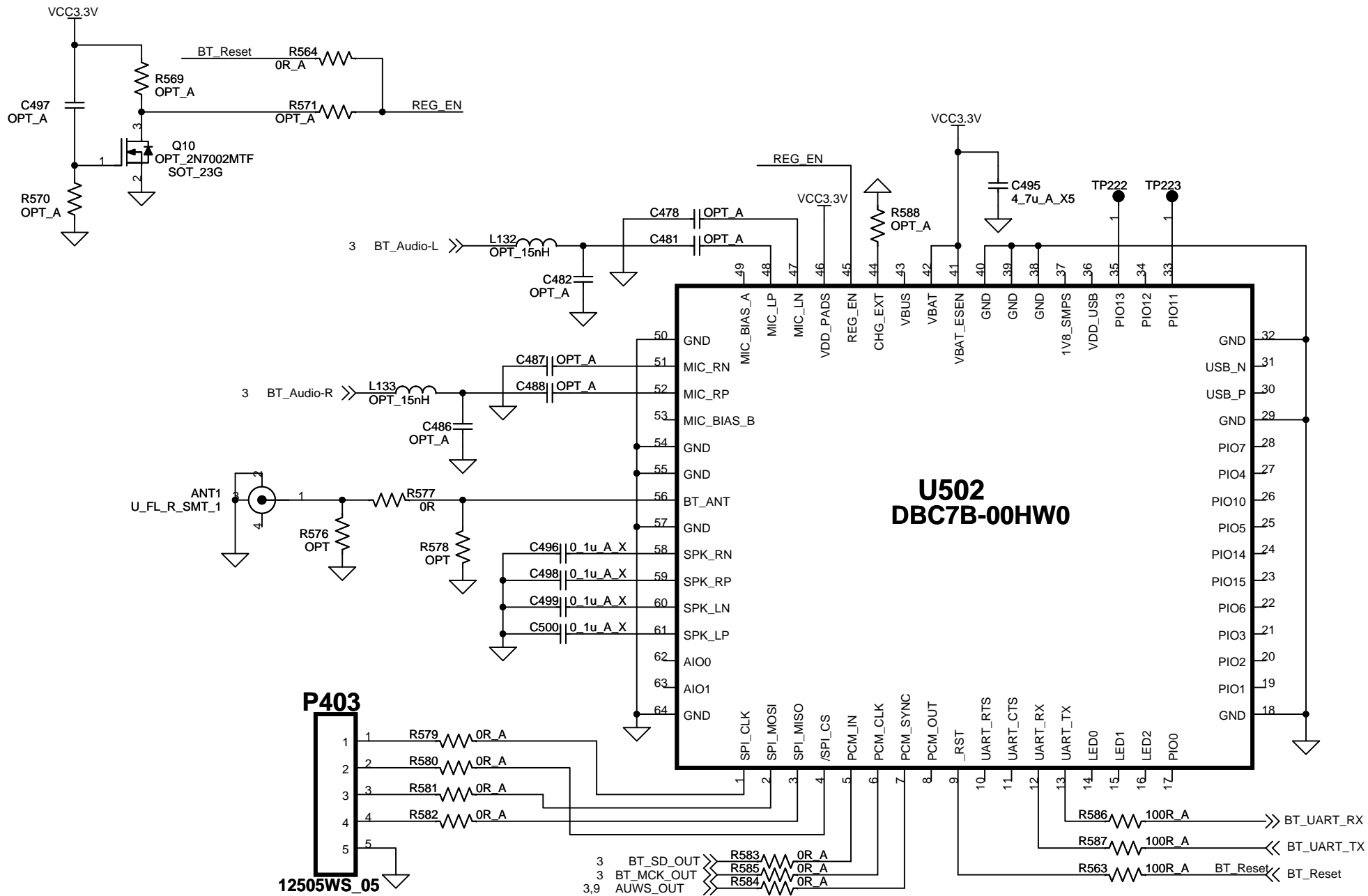
Title			P14_MSD8834
Size	Document Number		Rev
A3	PANEL INTERFACE & Tuner		V1.1
Date:	Friday, February 24, 2017	Sheet	10 of 12



**IC202
LG1001_P**

본 자료는 (주)HWH의 자료로서
(주)HWH의 동의없이 제3자에게
배포될 경우 법적책임은 배포자가 집니다.

Title P14_MSD8834		
Size A3	Document Number Pro idiom	Rev V1.1
Date Friday, February 24, 2017	Sheet 11	of 12



본 자료는 (주)HWH의 자료로서
 (주)HWH의 동의없이 제3자에게
 배포될 경우 법적책임은 배포자가 집니다.

Title		P14 MSD8834	
Size	Document Number		Rev
A4	Bluetooth		V1.1
Date:	Friday, February 24, 2017	Sheet	12 of 12