



Antenna Type: ___FPC Antenna

Model: _TRT-A5580-08S

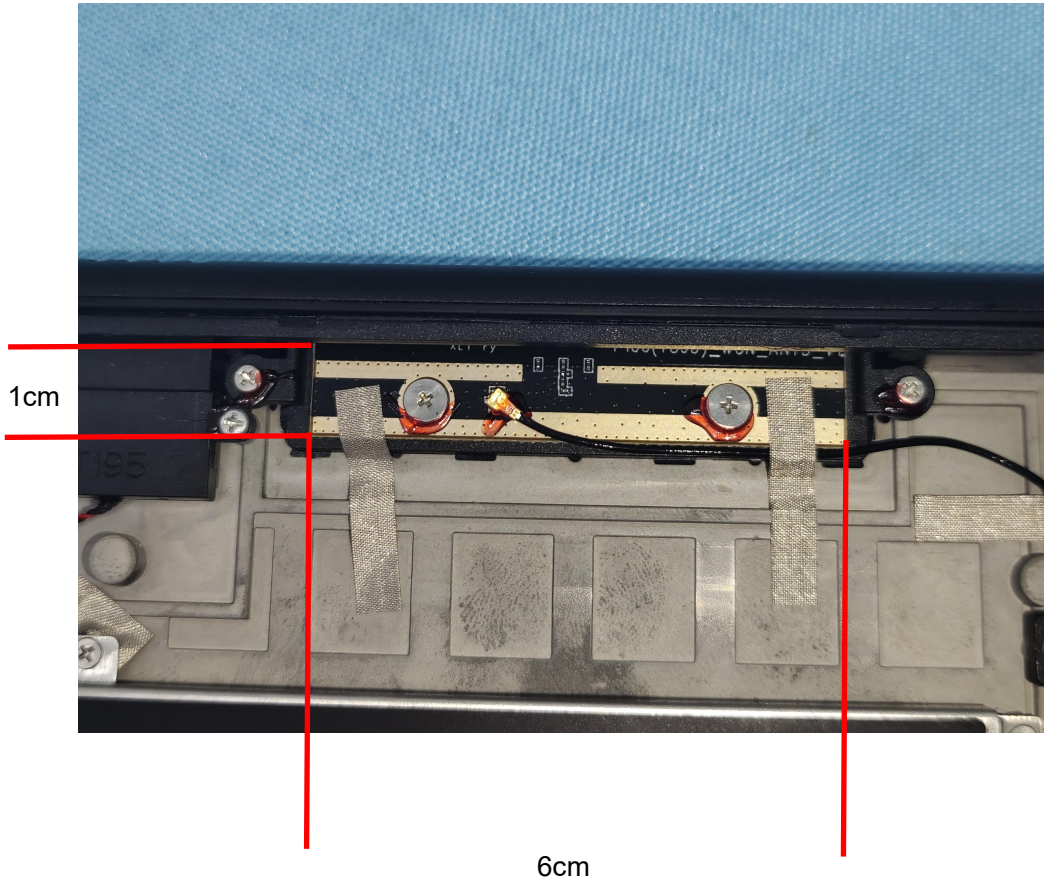
Specification: BT / WIFI Antenna

Frequency: 2.4~2.5 / 5.15~5.85GHz

目录

1. Antenna diagram.....	4
2. Electrical properties.....	5
2.1 Test Method Description and Data.....	5
2.2 Passive Test Report (无源测试报告)	5

1. Antenna diagram



2. Electrical properties

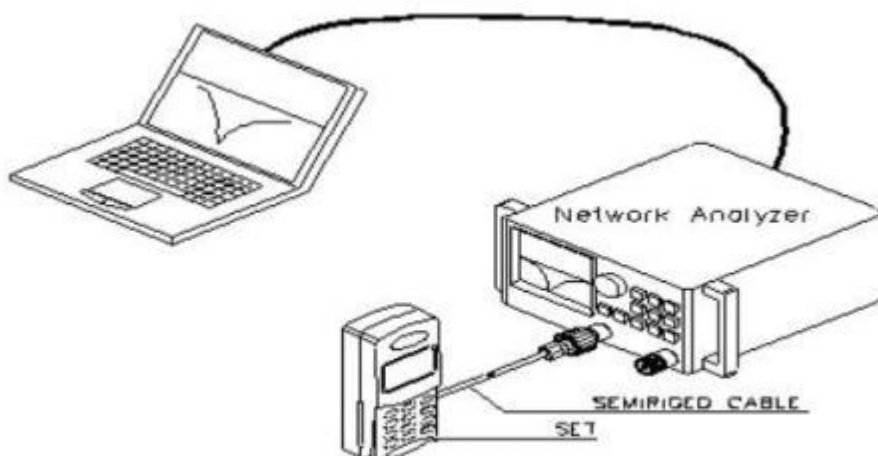
2.1 Test Method Description and Data

Device Name	Use
Vector Network Analyzer	S11/Impedance/ Passive Test
Agilent 8960 SP6010 R&S CMU200	包含 BT、WIFI、GSM、 GPRS、 EDGE、 CDMA2000、 1xEV-DO、 TD-SCDMA、 WCDMA、 HSDPA 的手机移动通信设备测试
R&S CMW500 MT8820C	包含 TD-SCDMA、WCDMA、HSDPA、LTE、WIFI、BT、GPS 的手机移动通信设备测试
Agilent E4438C	测试有源 GPS
MVG Chamber	Passive Test / OTA active Test / Efficiency/Gain

2.2 Passive Test Report (无源测试报告)

Test equipment: Network analyzer

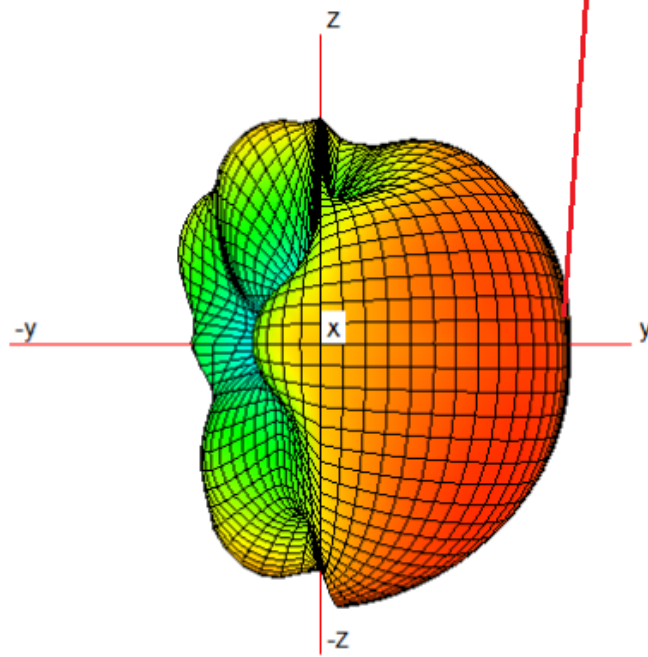
Test method: Use a 50 ohm CABLE cable to export from the instrument test port, calibrate with a calibration piece, and connect to the SMA connector of the mobile phone tool, and record the return loss or standing wave ratio data corresponding to the relevant frequency points.



测试示意图

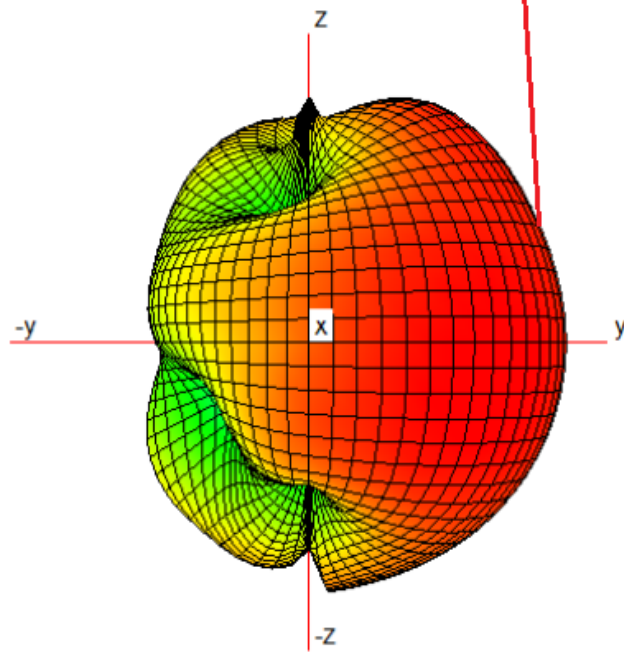
2420MHz

-1.10dBi



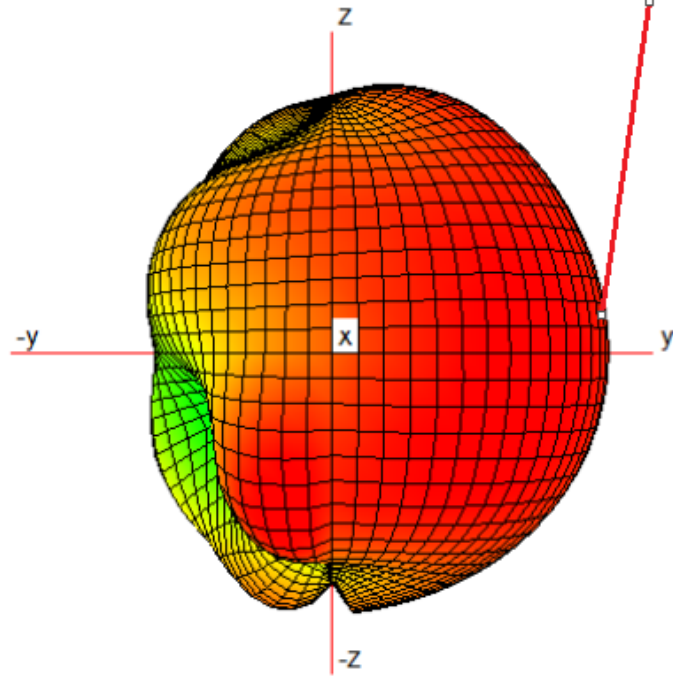
5200MHz

2.04dBi



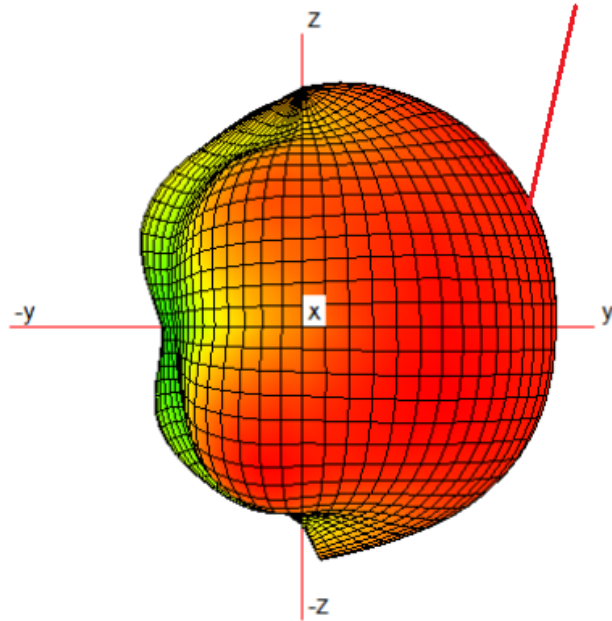
5500MHz

1.65dBi



5750MHz

2.72dBi



Freq(MHz)	Efficiency_dB	Gain
2400	-5.16	-1.30
2410	-5.14	-1.21
2420	-5.13	-1.10
2430	-5.16	-1.03
2440	-5.12	-0.89
2450	-5.12	-0.82
2460	-5.09	-0.68
2470	-4.96	-0.60
2480	-4.84	-0.46
2490	-4.77	-0.39
2500	-4.67	-0.38
5150	-5.43	0.99
5200	-4.89	2.04
5250	-4.64	2.32
5300	-4.72	2.37
5350	-4.52	2.16
5400	-4.71	1.73
5450	-4.50	1.80
5500	-4.73	1.65
5550	-4.96	1.73
5600	-4.77	2.11
5650	-4.90	2.28
5700	-4.51	2.88
5750	-4.79	2.72
5800	-5.04	2.48
5850	-5.55	1.92