

# Antenna test Report

## K6/K7-US

SKYLIGHT ENGINEER DEPT			
APPROVAL BY	DRAWN BY	DATE	Version
Simon	Louis jiang	2023.8.1	V01

SKY LIGHT Electronic (Shen Zhen) Limited

Website: <http://www.skylight.com.hk> (TEL) 86-755-27511234

# Content



1

**Instrumentation Performance**

2

**Antenna Performance { K6/K7-us Antenna---WiFi }**

3

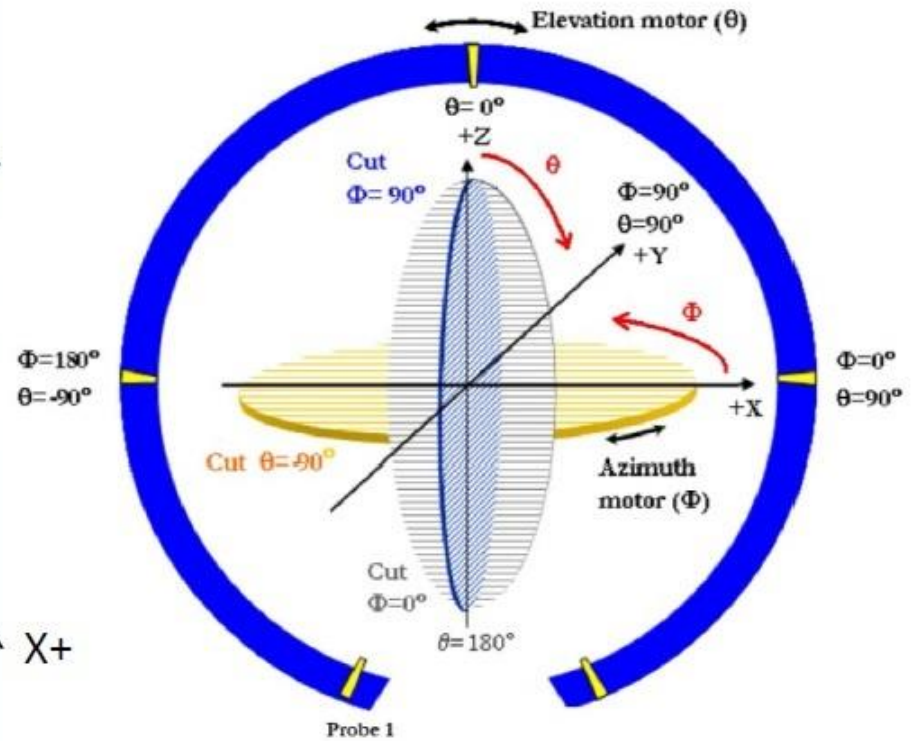
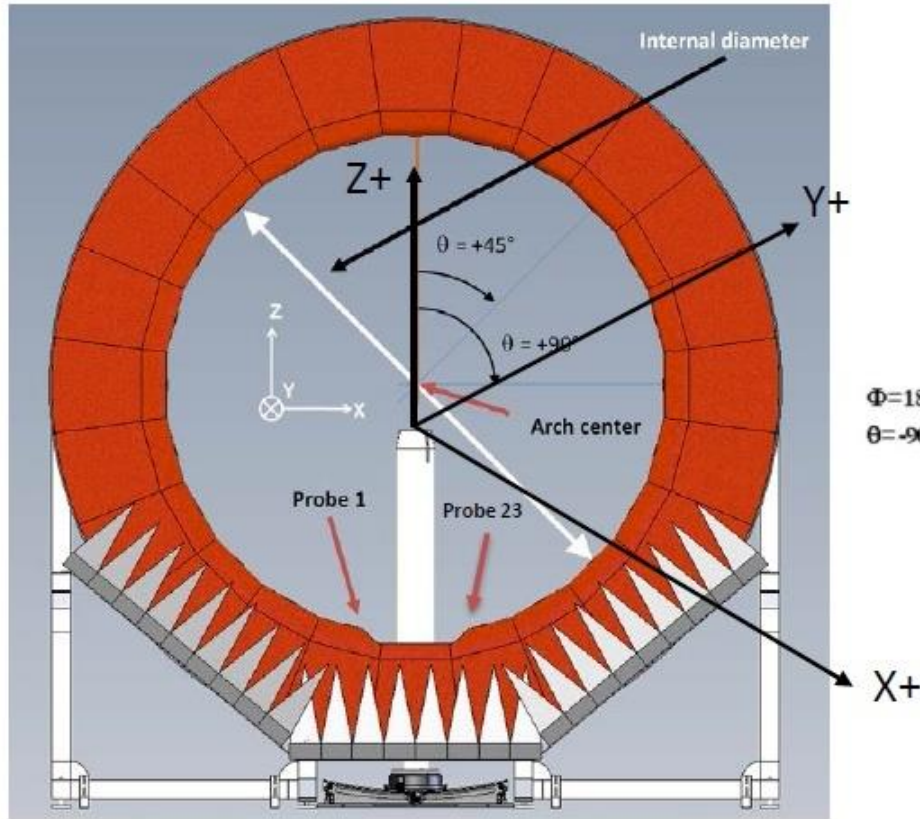
**conclusion**

# Release notes



Version	Update History
V01	01) Antenna test for FCC.

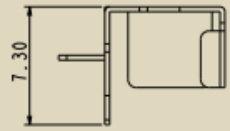
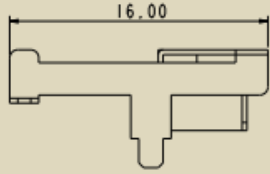
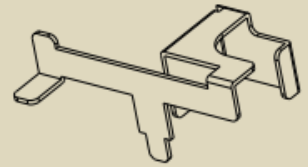
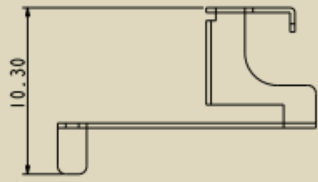
# Instrumentation Performance





# Antenna in K6/K7-us

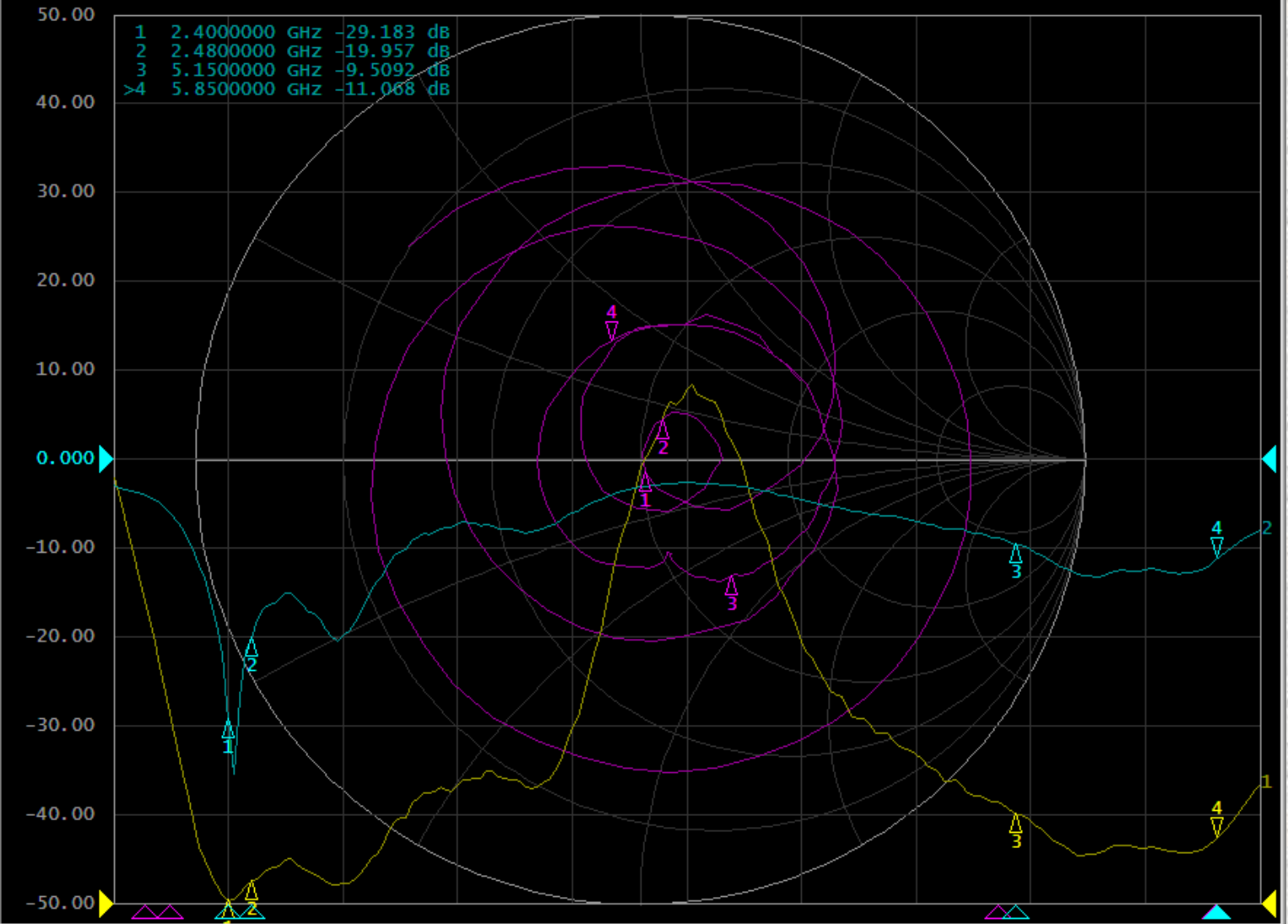
WiFi ant



# Antenna specifications

1 Active Ch/Trace 2 Response 3 Stimulus 4 Mkr/Analysis 5 Instr State

Tr1 S11 SWR 1.000/ Ref 1.000 [F1 M]  
 Tr2 S11 Log Mag 10.00dB/ Ref 0.000dB [F1 M]  
 Tr3 S11 Smith (R+jX) Scale 1.000U [F1 M]



1 Start 2 GHz IFBW 70 kHz Stop 6 GHz Cor II

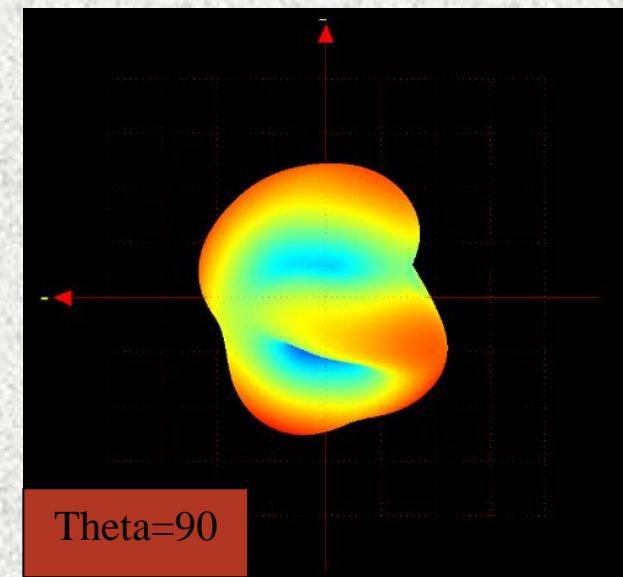
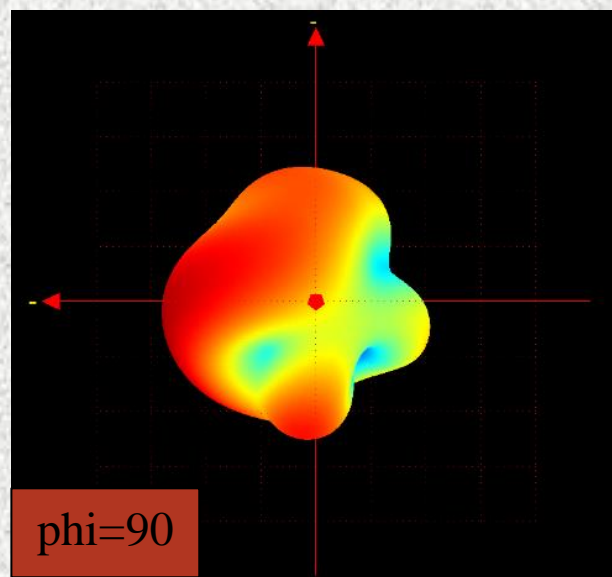
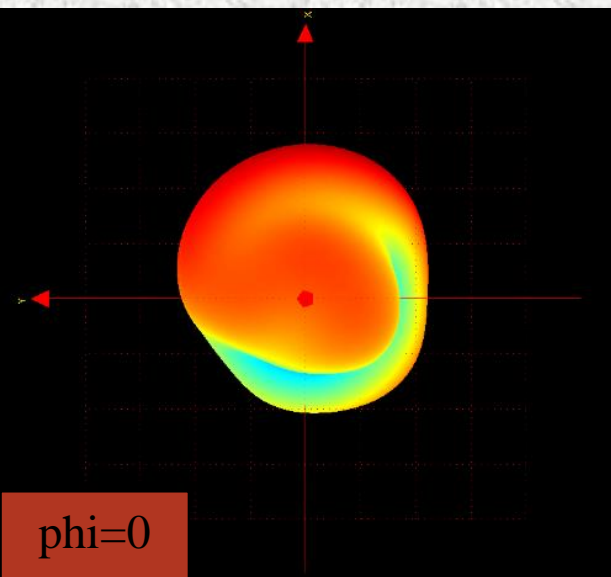
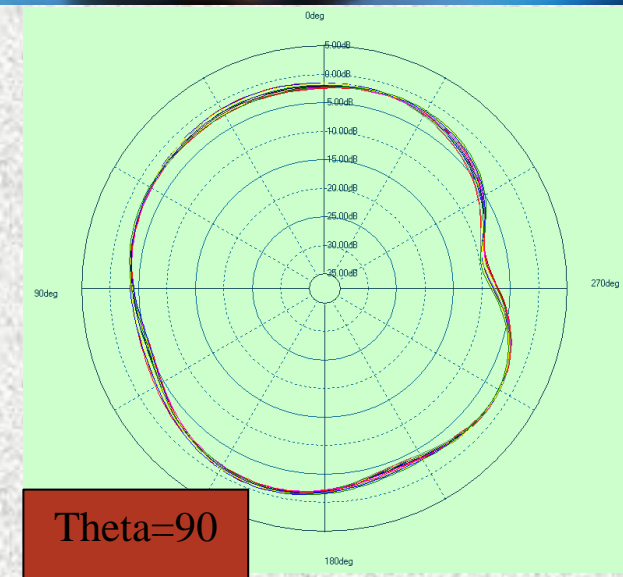
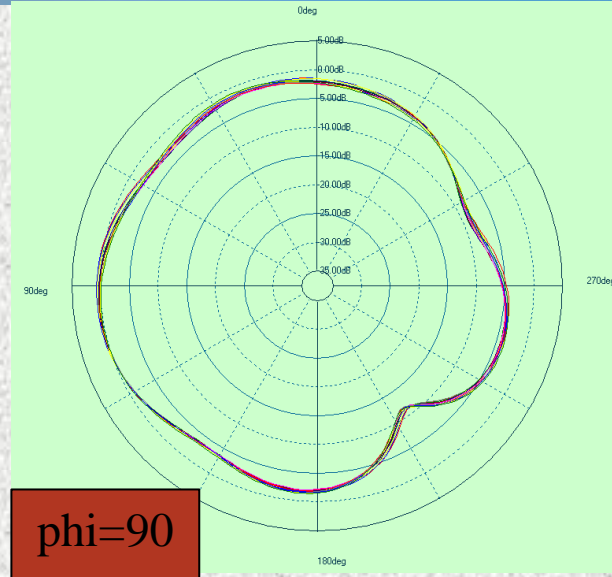
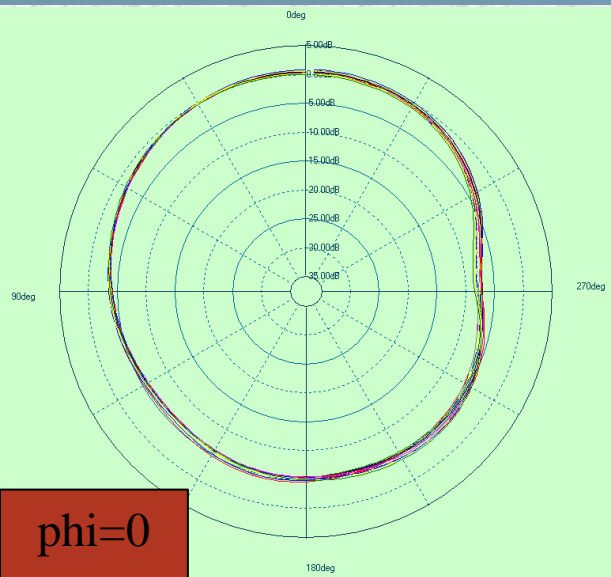
# SPEC



ITEM	ANTENNA SPEC					
<b>Model Name</b>	K6/K7-us--WiFi					
<b>Frequency &amp; Gain</b>	2400MHz	2450MHz	2500MHz	5150MHz	5500MHz	5850MHz
	1.04	1.12	1.15	1.39	1.74	1.82
<b>Peak Gain(dBi)</b>	2.4G=1.15 / 5G=1.82					
<b>Average Gain(dB)</b>	2.4G=1.10 / 5G= 1.65					
<b>Impedance</b>	50 $\Omega$					
<b>Antenna Size</b>	16*10.3*7.3 ( mm )					
<b>Manufacture</b>	Sky Light Electronic (ShenZhen) Limited					
<b>Add</b>	No. 8 & 9 Building, Antuoshan High-tech Industrial Park, Xinsha Road, Shajing, Bao'An, Shenzhen, Guangdong, China					
<b>VSWR</b>	< 2.0					
<b>Return Loss(dB)</b>	<-10					
<b>Antenna type</b>	Iron antenna					7/10

# Performance of WiFi 2.4G

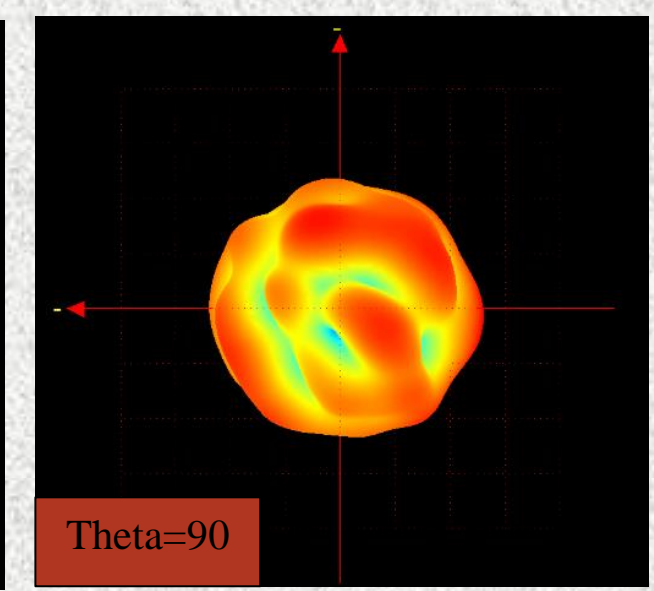
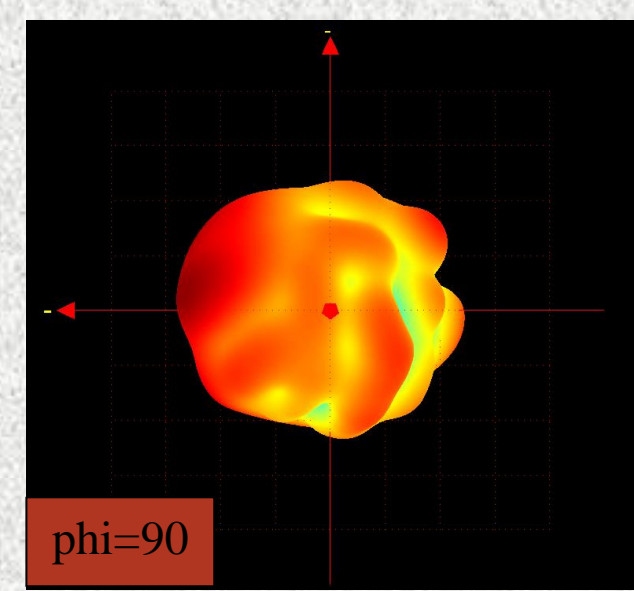
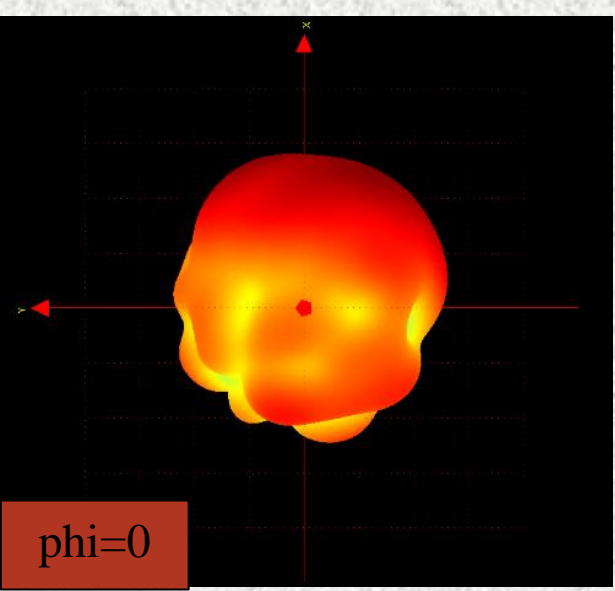
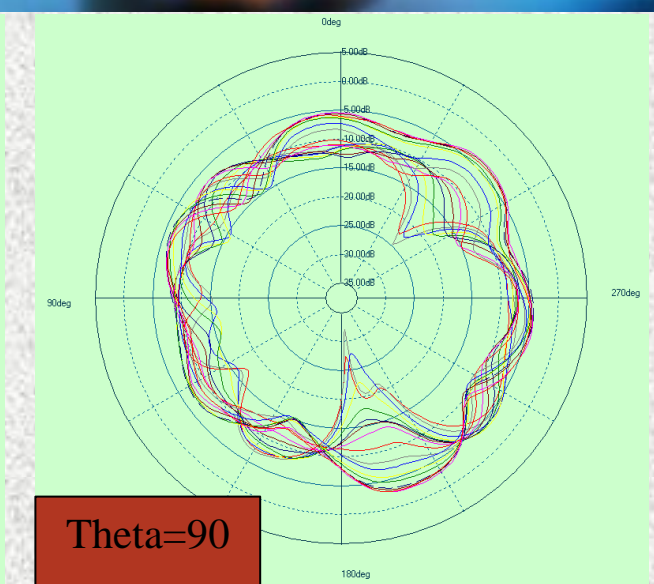
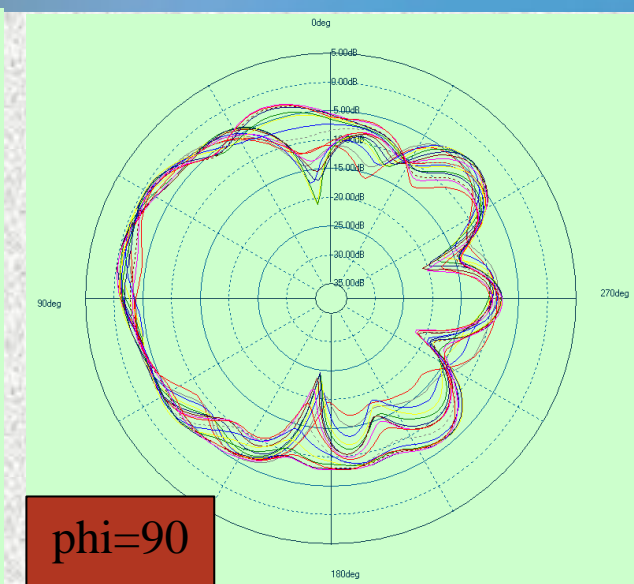
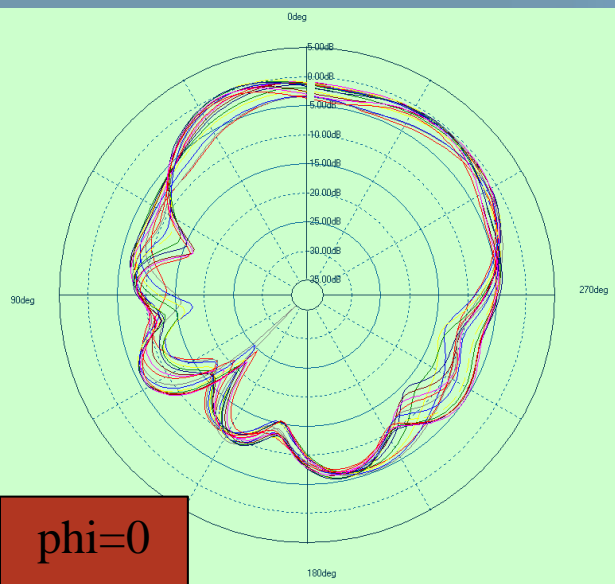
## 2D&3D sectional view





# Performance of WiFi 5G

## 2D&3D sectional view



# Thank You !

[www.sky-light.com.hk](http://www.sky-light.com.hk)

SKY LIGHT Electronic (Shen Zhen) Limited      Version: 1.0

Website: <http://www.skylight.com.hk>      (TEL) 86-755-27511234