



# D-Series

With you on the front line

## Quick Start Guide

V 1.1



# Contents

<b>Introduction</b>	<b>3</b>
<b>Quick start</b>	<b>4</b>
Charge	4
Choose your Mount	4
Klickfast stud (using attach & removal tool)	5
Klickfast stud (attach & removal without tool)	6
Shirt / pocket clip	7
Record	8
<b>Operation</b>	<b>9</b>
Camera Articulation	9
Power ON / OFF	9
Playback (on camera)	10
Control buttons during Playback	10
Go back	11
Mark as Important	11
Stealth mode	12
Picture taking mode	13
LED light notification	14
<b>Optional camera settings</b>	<b>15</b>
Through DEMS	15
Without DEMS	15
DEMS administration window	16
Additional LED light notifications	17
Audio Mute	18
Allow manual mute	18
Do not allow manual mute	19
Always mute	19
Viewing camera settings	20
WiFi mode (D5 only)	21
<b>Product conformance</b>	<b>22</b>
<b>Technical specifications</b>	<b>24</b>
<b>Notes</b>	<b>26</b>

# Introduction

Congratulations on purchasing the D-Series next generation body worn camera.

This quick start guide will show you the basics and get you up and running with your D-Series camera in 3 easy steps.

**NOTE:** the reference to D-Series in this guide covers both the D3 camera, and the wireless enabled D5, except where specifically stated otherwise.

## 1 Charge

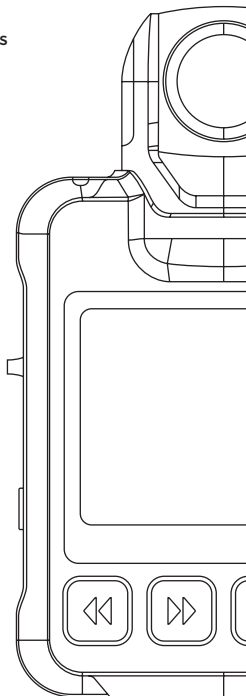
Charge your camera for six hours until the charging light turns green.

## 2 Mount

Choose how to mount your camera using either a single combination shirt/pocket clip, or a klickfast stud.

## 3 Record

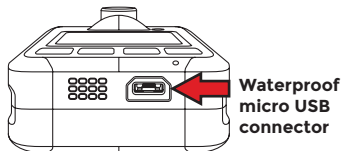
Slide the red switch down to start recording. To stop recording, slide the red switch up.



## Quick start

### 1 Charge

The USB charging and data connector is located at the bottom of the camera. Any standard USB wall charger can be used to charge the D-Series with the USB cable supplied in the box.



Charge your camera until the LED indicator on top of the unit lights green. The D-Series takes approximately 6 hours with a fast charger. For a standard charger this would take longer to reach full charge, or shorter connected to a USB fast charger.

The D-Series can also be charged directly from the Reveal D-Series docking station for guaranteed fast charging.

### 2 Choose your mount

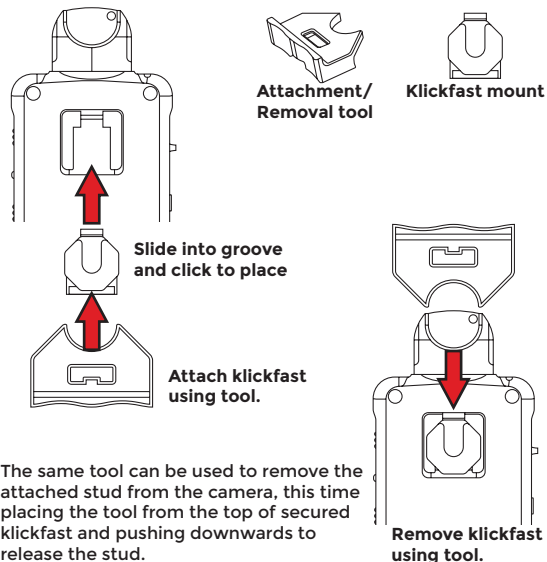
The rear of the D-Series has a moulded groove slot which allows the attachment of clip mount accessories to the camera. Mounting options supplied in the box are:

1. Klickfast stud
2. Reveal single combination shirt/pocket clip

## Quick Start

### Klickfast stud (using attach & removal tool)

The D-Series camera is supplied with a small tool in box to assist attachment and removal of the klickfast stud. Simply align the tool with the klickfast stud and the groove on rear of D-Series, and push upward to click stud into place.



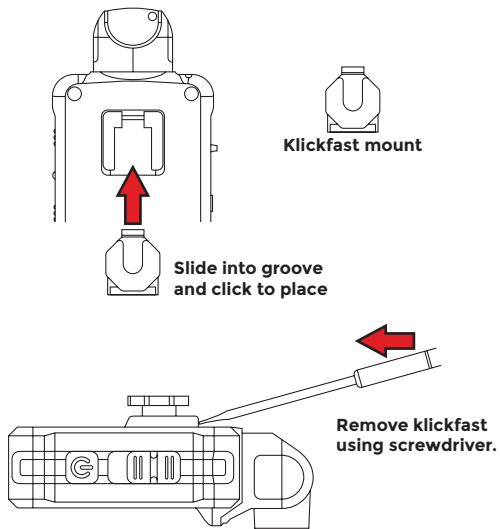
The same tool can be used to remove the attached stud from the camera, this time placing the tool from the top of secured klickfast and pushing downwards to release the stud.

Used for helmet

## Quick start

### Klickfast stud (attach & removal without tool)

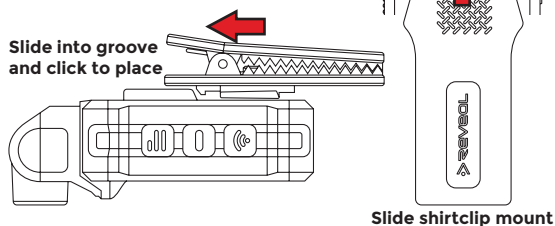
The klickfast stud can also be attached by pushing the clip into place without using the tool. Removal of the klickfast stud requires a flat head screwdriver, which is used to lever up the clip tongue, and the gently slide downwards to remove.



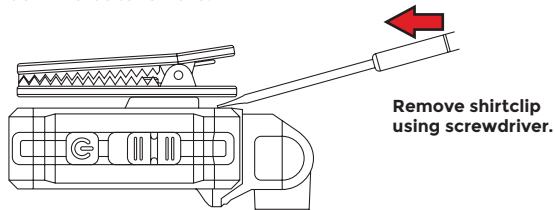
## Quick start

### Shirt / pocket clip

To attach the shirt clip, simply align the attachment to the rear groove on the D-Series and slide and clip, as per diagrams below.



To remove the shirt clip, use a flat head screw driver to carefully lever up the clip tongue, and then gently slide downwards to remove.

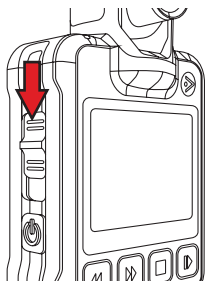


## Quick start

### 3 Record

To record video footage, simply slide the red switch down to start capturing.

The D-Series will beep 3 times in quick succession to indicate it has started recording, and the LED on the shoulder of camera will start flashing red to indicate it is recording. A flashing red dot on the camera display will also indicate that the camera is recording.



**NOTE:** the D-Series does not need to be powered on to start recording. Simply slide down the red switch to start recording.

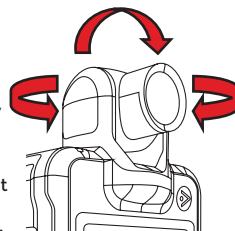
To stop recording, simply slide the red switch up.

## Operation

### Camera Articulation

The D-Series camera head is able to rotate horizontally and vertically within limits. However, **DO NOT OVER ROTATE!**

The D-Series camera head does not rotate 360 degrees. Forcing it will cause damage to the camera head.



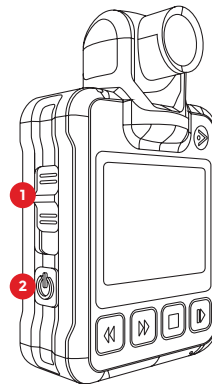
### Power ON / OFF

Power ON the unit by pressing the **FUNCTION** button (button 2) for 1 second. The D-Series will sound a welcome chime, and open into preview mode.

In preview mode you can orientate the camera head ready for recording, view display and detail such as recording resolution, time and date, storage capacity

Power OFF the unit by pressing and holding the same **FUNCTION** button for 2 seconds.

**NOTE:** The D-Series can also be powered up from the off position by sliding down red record slider. This action powers up the camera and starts recording immediately.



## Operation

### Playback (on camera)

Press the **FUNCTION** button to turn the camera on, and then press the **PLAY** button (button **9**) to open playback mode.

In the playback menu, any recorded video footage in the camera is displayed as thumbnails on the display screen.

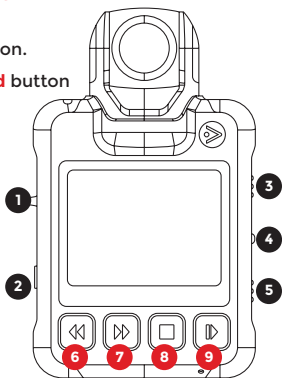
### Control buttons during Playback

- Button **6**, is the **Rewind** button.
- Button **7**, is the **Fast Forward** button
- Button **8**, is the **Stop** button
- Button **9** is the **Play** button.

In the playback menu, use the **FF** and **REW** buttons to scroll and highlight thumbnails (highlighted in yellow border), then press **PLAY** to playback footage on the D-Series camera.

During playback the user can Rewind footage by pressing button **6**, and fast forward by pressing button **7**.

Both Rewind and Fast forward can increased in speed increments from and initial 1x speed to 4x 16x and 64x by subsequent pressing on **REW FFW** buttons.



## Operation

### Go back

Press the **FUNCTION** button to leave the playback mode and return to preview screen.

Press the **FUNCTION** button twice to exit the Enter Pin screen and return back to preview screen.

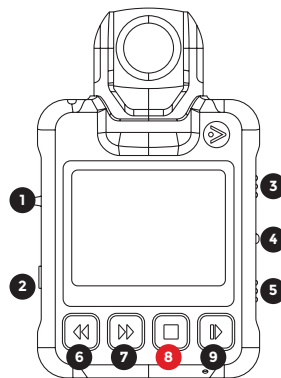
### Mark as Important

While recording, press the **STOP** button once to mark the video as important.

The symbol will appear in the bottom right corner of the screen.

In playback mode, select the desired thumbnail then press the **STOP** button to mark video as important.

The symbol will appear in the bottom right corner of the thumbnail.



## Operation

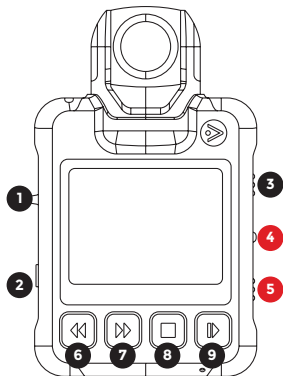
### Stealth mode

In this mode, the D-Series displays no image on screen and the red LED is not lit. The D-Series appears off! There are no audio alarms except for the power on chime.

To activate stealth mode on the D-Series,

- Press and hold button **4** (i.e. middle button on right hand side) for TWO seconds.
- To deactivate stealth mode repeat the above step by pressing and holding button **4** for a further TWO seconds

This activates and deactivates the Stealth mode whilst the unit is in either recording or record preview mode.

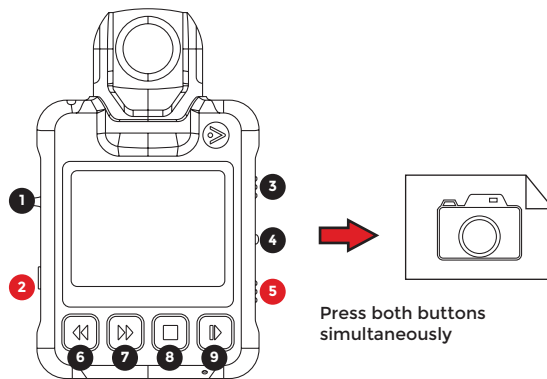


**NOTE (D3 only):** Button **5** is also a stealth button, and long press (i.e. for two seconds) on either button **4** or **5** will switch camera into stealth mode.

## Operation

### Picture taking mode

The D-Series can take single image photos when in either preview mode (i.e. not recording) or in pre-record mode (also not recording) by pressing the **FUNCTION** button (i.e. button **2**) and button **5** on the right of the device screen simultaneously.



Press both buttons simultaneously

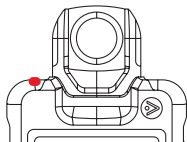
A picture will be taken and placed in the DCIM folder, and pictures can be viewed in the playback mode by pressing the Play button and navigating to the appropriate thumbnail.

## Operation

### LED Light Notification

#### Power on

Solid red light



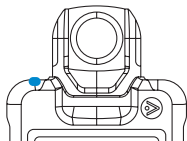
#### Recording

Flashing red light



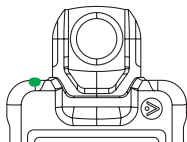
#### Charging

Solid blue light



#### Fully charged

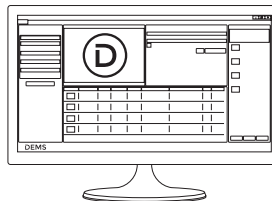
Solid green light



## Optional camera settings

### Through DEMS

DEMS is Reveal's industry leading digital evidence management platform built to securely store, manage and export digital evidence, large or small, whilst always remaining incredibly simple and easy to use.



In the DEMS administration window select the Reveal camera settings tab

**NOTE:**  
Requires DEMS 360 or later.

### Without DEMS

For users without DEMS, camera settings can be changed on the camera using the **Reveal Camera Manager** tool.



The tool is designed to work with Microsoft Windows and can be downloaded from the Reveal website - <http://hub.revealmedia.com/files/clients/rcm/latest-release/>



# Optional camera settings

## DEMS administration window

The screenshot shows the DEMS administration interface. At the top, there is a navigation bar with tabs: RETENTION POLICY, MEDIA CATEGORIES, TEAMS, CAMERA SETTINGS (selected), USER ROLES, DEPARTMENTS, LOCATIONS, LICENCE, ERRORS, and FILES IN TRANSFER. Below this is a sub-menu for CAMERA SETTINGS with options: REVEAL CAMERA ENCRYPTION, EMAIL SETTINGS, and USER PERMISSIONS. The main content area is titled 'CAMERA SETTINGS' and contains a list of settings, each with a dropdown menu or input field. At the bottom, there are 'SUBMIT' and 'RESTORE DEFAULT SETTINGS' buttons.

Setting	Value
RECORDING EXTENSION	MP4
LANGUAGE	ENGLISH
RESOLUTION	1280x720/30P
WHITE BALANCE	AUTO
DATE/TIME STAMP	On
SYNC DATE/TIME WITH PC	On
AUDIO ALARM	On
PRE-RECORD	Off
PRE-RECORD MUTE	Off
AUDIO MUTE	No Manual Mute
LCD OFF	Off
STEALTH MODE	Off
RECORD OFF MODE	Slider
PROTECTED MODE	Off
TRUSTED MODE	Off
TRUSTED UNLOCK PASSWORD	(8 DIGITS REQUIRED)
CAMERA SCREEN DATA UPPER LEFT	None
CAMERA SCREEN DATA UPPER RIGHT	None
CAMERA SCREEN DATA LOWER LEFT	None

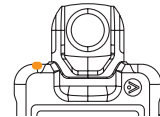
# Optional camera settings

## Additional LED Light Notification

The following LED light notifications result from interaction with the Reveal DEMS software solution (or Reveal Camera Manager - RCM). Full explanation regarding the features that utilise these notifications on the D-Series can be found in the DEMS and RCM User guides.

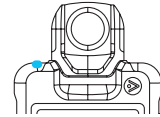
### Pre-Recording

Orange LED notification



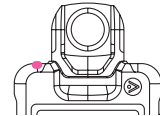
### Paired to smartphone (D5 only)

Cyan LED notification



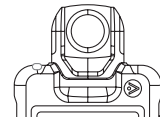
### Connected to WiFi (D5 only)

Purple LED notification



### Camera error reporting

White LED notification



**NOTE:** for some notifications the LED will flash alternate colours depending on the camera state.

## Optional camera settings

### Audio Mute

Audio mute allows users a way to mute the audio while recording video, and here are three modes in which audio mute can function. The modes are set through DEMS 360, or RCM.

1. Allow manual mute
2. Do not allow manual mute
3. Always mute

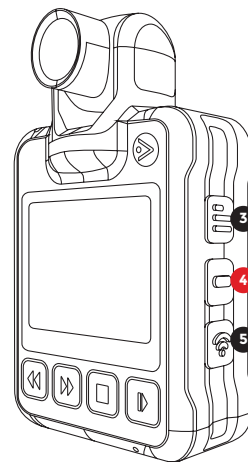


### Allow manual mute: (mute can be activated/deactivated on camera)

When in power up (preview) or record, the user presses the Audio button (4) (just a quick press) once to toggle the device between audio mute on and off.

## Optional camera settings

- An Audio beep is heard (not heard on camera)
- Icon showing a muted microphone is shown on screen. See location on pre-record screens below for exact placement.
- No audio is recorded
- Pressing the Audio button unmutes recording and icon disappears (audio beep is heard)



### Do not allow manual mute

Mute facility cannot be activated through the button on the device.

### Always mute

When in power up (preview) or record audio is always muted.



## Optional camera settings

### Viewing camera settings

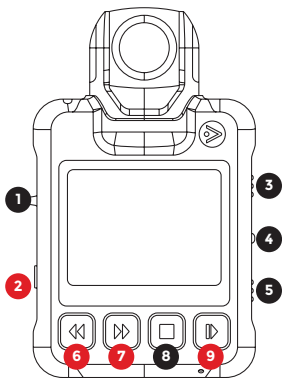
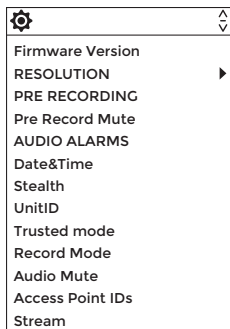
The D-Series allows you to view the settings currently active in the camera. Press the Menu button (button 3) to display the menu list of settings currently set in the camera.

**NOTE:** menu items cannot be set directly from the camera, and must be set remotely using a computer or mobile application.

Navigating the menu items:

- To move UP and/or DOWN on menu items press the **FWD/RW** buttons (i.e. buttons 6 and 7) respectively.
- To expand on a menu item to check status, press the **PLAY** button (button 9).
- To collapse back to menu items only, press the **FUNCTION** button (button 2).

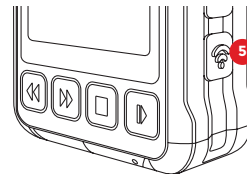
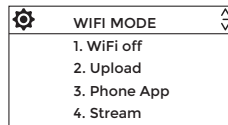
To exit the menu display, press the **FUNCTION** button (button 2) to return back to main camera view.



## Optional camera settings

### Wifi mode (D5 only)

Hold down button 5 to access the wifi mode menu.



The WiFi functionality is set from the camera. The three modes of operation below defined for this mode:

Option	Description
WiFi OFF	Normal camera operation - WiFi is switched off.
Upload	Upload Mode. WiFi is switched on as a client.
Phone App	App mode - WiFi is in Access Point mode.
Stream	Streaming mode - WiFi is switched on as a client device.

## Product conformance

### How to recycle your equipment

The symbol shown here and on the packaging means that the product is classed as electrical or electronic equipment, so DO NOT put it in your normal garbage bin.



It's all part of the Waste Electrical and Electronic Equipment (WEEE) directive to recycle products in the best way, and get rid of dangerous things more safely.

You should contact your retailer, supplier, or local city office for advice on how to dispose of this product in an environmentally friendly way.

### Reduction of hazardous substances

This product is compliant with the EU Registration, Evaluation, Authorization and Restriction of Chemicals (REACH) Regulation (Regulation No 1907/2006/EC) and the EU Restriction of Hazardous Substances (RoHS) Directive (Directive 2011/65/EU).

### Radio Equipment Directive (RED)

The D-Series product is compliant with the requirements of the Radio Equipment Directive (2014/53/EU).



## Product conformance

### FCC Statement

The D-Series complies with part 15 of the FCC Rules. Operation is subject to the following two conditions: (1) This device may not cause harmful interference, and (2) this device must accept any interference received, including interference that may cause undesired operation.

The D-Series has been tested and found to comply with the limits for a Class B digital device, pursuant to Part 15 of the FCC Rules. These limits are designed to provide reasonable protection against harmful interference in a residential installation.

This equipment generates, uses and can radiate radio frequency energy and, if not installed and used in accordance with the instructions, may cause harmful interference to radio communications. However, there is no guarantee that interference will not occur in a particular installation. If this equipment does cause harmful interference to radio or television reception, which can be determined by turning the equipment off and on, the user is encouraged to try to correct the interference by one or more of the following measures:

- Reorient or relocate the receiving antenna.
- Increase the separation between the equipment and receiver.
- Connect the equipment into an outlet on a circuit different from that to which the receiver is connected.
- Consult the dealer or an experienced radio/TV technician for help.

Changes or modifications not expressly approved by the party responsible for compliance could void the user's authority to operate the equipment.

### RF Exposure Information

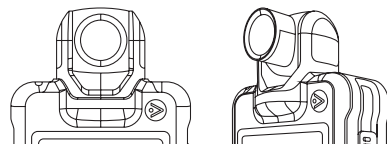
This equipment complies with FCC radiation exposure limits set forth for an uncontrolled environment and can be used/operated in portable operating conditions without any restrictions. For detailed SAR information, please check the FCC ID: 2AL26-D5 on fcc website. The face up position for SAR shall be minimum 5mm.

## Technical specifications

The D-Series is a fully featured camera in the Reveal product family featuring high performance video capture and on-board playback and long battery life as well as a host of connected features.

<b>Dimensions</b>	H: 100mm W: 60mm D: 26mm (thickness of device)
<b>LCD display dimensions</b>	2.0" 4x3 262K colors (960x240 pixels), with dimmable backlight
<b>Field of View</b>	110 Degrees (Horizontal), 50 Degrees (vertical)
<b>Vibration notifications</b>	Yes
<b>Weight</b>	Max 155g
<b>Camera head</b>	Total horizontal rotation: 305° Left rotation: 105°, Right rotation: 200° Total vertical rotation: 174°
<b>Buttons</b>	One record button with mechanical click on activation, One Power (Evidence/Back/Reset) button and 3 software programmable buttons on the side, 4 buttons on the front including a Stop, Play, Rewind and Fast forward button

## Technical specifications



<b>Power/Data connection</b>	MicroUSB connector: Waterproof with metal shield for damage prevention
<b>Wifi (D5 only)</b>	802.11n (A/B/G/N) 2.4GHz and 5.8GHz
<b>Bluetooth (D5 only)</b>	BLE 4.0
<b>Battery type</b>	Lithium Polymer
<b>Battery life</b>	480p: up to 12hrs 720p: up to 11hrs 1080p TBC
<b>Battery charge time (from flat)</b>	6 hours (at standard charging rate)
<b>Still picture capture</b>	Yes (JPEG)
<b>Recording Resolutions</b>	480p / 720p / 1080p
<b>Recording Formats</b>	MPEG-4 (video codec H.264)
<b>Storage capacity</b>	32GB or 64GB EMMC (Non-removable)
<b>Encryption</b>	AES 256 Encryption
<b>Working temperature range</b>	"-10C° to 45C°



Notes

Notes

