

2AKZSM-1200S

AC1200M Wireless USB Adapter

Standards	IEEE 802.11ac/a/b/g/n
Interface Type	USB3.0/2.0/1.1
Transmission Rate	802.11ac: up to 867Mbps(5G); 300Mbps(2.4G)
Frequency Range	2.4G:2412MHz -2483MHz 5G:5150MHz - 5825MHz
Modulation	802.11ac: MU-MIMO 802.11a: 5G OFDM 802.11n: MIMO-OFDM/CCK/DSSS 802.11g: CCK/DSSS/OFDM 802.11b: CCK/DSSS
RF Power	2.4G:16DBm(MAX EIRP) 5G:13DBm(MAX EIRP)
Antenna Type	Built-in Antenna
Supported OS	Windows xp/7/8/10 /MAC OSX /Linux
Environment	Operating Temperature:0°C-40°C Operating Humidity:10%-85% RH non-condensing Storage Temperature:20°C-60°C Storage Humidity: 5%-90% RH non-condensing

1



1.3 Put the mini CD on the CD disk, then the auto installation window will pop up. Click Windows, the driver will run automatically. (Double click "Setup.exe" in the software CD and manually install when auto-run driver doesn't work)



2

1.6 This shows that it is installing.



1.7 Click "Finish" to complete the installation.



3

Installation Guide

This chapter will guide you through the process of installing the network adapter software package with the included mini CD. The package integrates driver and configuration software. Thus, when you are installing the driver, the configuration software will be installed automatically as well.

The software installation steps and operating guide in this user guide are under Windows XP, installation steps for other operating systems are similar. Before you proceed with the installation, please notice the following descriptions.

Note 1: The following installation is operated under Windows XP (Procedures are similar for Win7/8/10/Linux/Mac)

Note 2: If you have installed the WLAN usb driver & utility before, please uninstall the old version first.

1 Install the USB Network Adapter

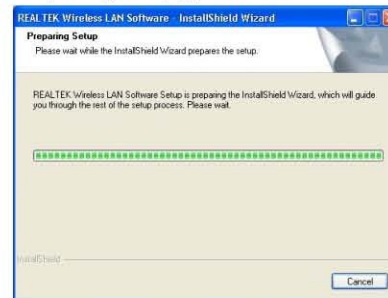
1.1 Please insert the Wireless USB Adapter into the USB port of your computer

1.2 Ignore the following dialog. Click "Cancel"



4

1.4 Preparing setup, please wait



1.5 Click "Next" to process the installation



5

NOTE: This equipment has been tested and found to comply with the limits for a Class B digital device, pursuant to part 15 of the FCC Rules. These limits are designed to provide reasonable protection against harmful interference in a residential installation. This equipment generates uses and can radiate radio frequency energy and, if not installed and used in accordance with the instructions, may cause harmful interference to radio communications. However, there is no guarantee that interference will not occur in a particular installation. If this equipment does cause harmful interference to radio or television reception, which can be determined by turning the equipment off and on, the user is encouraged to try to correct the interference by one or more of the following measures:

- Reorient or relocate the receiving antenna.
- Increase the separation between the equipment and receiver.
- Connect the equipment into an outlet on a circuit different from that to which the receiver is connected.
- Consult the dealer or an experienced radio/TV technician for help

Changes or modifications not expressly approved by the party responsible for compliance could void the user's authority to operate the equipment. This device complies with Part 15 of the FCC Rules. Operation is subject to the following two conditions:
(1) this device may not cause harmful interference, and
(2) this device must accept any interference received, including interference that may cause undesired operation.

MADE IN CHINA

6